

Provincial Population & Public Health  
Infection Prevention & Control  
Workplace Health & Safety

# Guide for Outbreak Prevention & Control in Acute Care Sites

Includes Respiratory & Gastrointestinal Illness

### Do you have feedback about the guide?

We welcome your feedback for the following:

- Incorrect information
- Spelling errors
- Inconsistencies

Submit feedback in an email to: [CDCResourceFeedback@share.albertahealthservices.ca](mailto:CDCResourceFeedback@share.albertahealthservices.ca).

Note: If you have questions about a specific outbreak, or site-specific processes, always direct your questions to your designated site lead or the AHS Public Health Outbreak Team investigator.

© 2023 Alberta Health Services, Communicable Disease Control, Notifiable Disease & Outbreak Program



This copyright work is licensed under the [Creative Commons - Attribution-NonCommercial-NoDerivatives 4.0 International](https://creativecommons.org/licenses/by-nc-nd/4.0/). To view a copy of this license, see [Creative Commons — Attribution-NonCommercial-NoDerivatives 4.0 International — CC BY-NC-ND 4.0](https://creativecommons.org/licenses/by-nc-nd/4.0/). You are free to copy and distribute the work including in other media and formats for non-commercial purposes, as long as you attribute the work to Alberta Health Services, do not adapt the work, and abide by the other license terms. The license does not apply to AHS trademarks, logos or content for which Alberta Health services is not the copyright owner.

This material is intended for general information only and is provided on an “as is”, “where is” basis. Although reasonable efforts were made to confirm the accuracy of the information, Alberta Health Services does not make any representation or warranty, express, implied or statutory, as to the accuracy, reliability, completeness, applicability or fitness for a particular purpose of such information. This material is not a substitute for the advice of a qualified health professional. Alberta health Services expressly disclaims all liability for the use of these material, and for any claims, actions, demands or suits arising from such use.

<b>INTRODUCTION .....</b>	<b>7</b>
<b>SECTION 1: PREPARING FOR POTENTIAL OUTBREAKS.....</b>	<b>8</b>
1.1 Roles and responsibilities for outbreak prevention and management.....	8
Table 1A: RACI outbreak matrix.....	9
<b>SECTION 2: ASSESSING A POTENTIAL OUTBREAK .....</b>	<b>11</b>
2.1 Surveillance and threshold for investigation .....	11
Table 2A: Symptoms which require investigation and reporting to IPC or WHS/OHS to initiate an outbreak investigation .....	11
<b>SECTION 3: OUTBREAK DEFINITIONS AND DETERMINING OUTBREAK TYPE.....</b>	<b>12</b>
3.1 Case confirmation .....	12
3.2 Declaring an outbreak .....	12
3.3 Case definitions and outbreak criteria .....	14
Table 3A: COVID-19 illness .....	14
Table 3B: Respiratory illness (RI).....	16
Table 3C: Influenza illness .....	17
Table 3D: Mixed pathogen outbreak (respiratory) .....	17
Table 3E: Gastrointestinal illness .....	18
<b>SECTION 4: CONFIRMED COVID-19 OUTBREAK.....</b>	<b>19</b>
4.1 Acute care COVID-19 outbreak definition.....	19
4.2 Case confirmation .....	19
4.3 Duration of outbreak.....	19
4.4 Outbreak communication .....	19
4.4.1 Initial communication.....	19
4.4.2 Ongoing communication.....	20
4.5 Patient movements (admissions/discharges/transfers).....	20
4.5.1 Admissions and incoming transfers .....	20
4.5.2 Outgoing patient movements.....	20
Table 4A: Outgoing patient movement decisions from a COVID-19 outbreak unit.....	21
4.6 Patient considerations .....	21
4.6.1 Patient symptom monitoring .....	21
4.6.2 PPE requirements and additional precautions .....	21
4.6.3 COVID-19 testing .....	22
4.6.4 Discontinuation of additional precautions .....	22
4.6.5 Patient cohorting considerations .....	22
4.6.6 Patient/unit contact tracing and management.....	22
4.6.7 Early antiviral treatment for symptomatic patients (i.e., before causative pathogen identified) .....	23
4.7 Unit outbreak control measures.....	23
4.7.1 Cleaning and disinfection .....	23
4.7.2 Unit/area entrances .....	23
4.7.3 Personal protective equipment (PPE).....	23
4.7.4 Supplies .....	23
4.7.5 Additional measures.....	24
4.7.6 Designated family / support persons (DFSPs) / visitors .....	24
4.8 WHS/OHS actions and HCW outbreak control measures.....	25
4.8.1 General measures.....	25
4.8.2 HCW personal protective equipment (PPE).....	25

4.8.3 HCW cohorting and non-essential personnel (volunteers, students).....	25
4.8.4 Break areas / gatherings .....	25
4.8.5 Symptomatic HCW and testing recommendations.....	26
4.8.6 Work restrictions .....	26
4.8.7 HCW tracing and exposure assessment .....	26
<b>SECTION 5: CONFIRMED RESPIRATORY ILLNESS (RI) OUTBREAK INCLUDING CONFIRMED    INFLUENZA .....</b>	<b>27</b>
5.1 Acute care outbreak definition – respiratory illness, influenza, mixed pathogen .....	27
5.2 Case confirmation .....	27
5.3 Duration of outbreak.....	27
5.3.1 RI outbreak .....	27
5.3.2 Influenza outbreak.....	27
5.3.3 Mixed pathogen outbreak.....	27
5.3.4 Closing an outbreak .....	27
Table 5A: Organisms Commonly Associated with RI .....	28
5.4 Outbreak communication .....	31
5.4.1 Initial communication.....	31
5.4.2 Ongoing communication.....	31
5.5 Patient movements (admissions/discharges/transfers).....	32
5.5.1 Admissions and incoming transfers .....	32
5.5.2 Outgoing patient movements.....	32
Table 5B: Outgoing patient movement decisions from a RI or influenza outbreak unit .....	32
Table 5C: IPC Management for Outgoing Transfers from a Non-Influenza RI Outbreak Unit ....	33
Table 5D: IPC Management for Outgoing Transfers from an Influenza A/B Outbreak Unit.....	34
5.6 Patient Considerations .....	35
5.6.1 Patient symptom monitoring.....	35
5.6.2 PPE requirements and additional precautions.....	35
Table 5E: Additional precautions for respiratory symptoms .....	35
5.6.3 RI testing.....	35
5.6.4 Discontinuation of additional precautions .....	36
5.6.5 Patient cohorting considerations .....	36
5.6.6 Patient contact tracing.....	36
5.6.7 Early antiviral treatment for symptomatic patients (i.e., before causative pathogen identified) .....	36
5.7 Unit outbreak control measures.....	36
5.7.1 Cleaning and disinfection .....	36
5.7.2 Unit/area entrances .....	36
5.7.3 Personal protective equipment (PPE).....	37
5.7.4 Supplies .....	37
5.7.5 Additional measures.....	37
5.7.6 Designated family / support persons (DFSPs) / Visitors .....	37
5.8 WHS/OHS actions and HCW outbreak control measures.....	38
5.8.1 General measures.....	38
5.8.2 HCW personal protective equipment (PPE).....	38
5.8.3 HCW cohorting and non-essential personnel (volunteers, students).....	39
5.8.4 Break areas / gatherings .....	39
5.8.5 Symptomatic HCW and Testing Recommendations .....	39
5.8.6 Work Restrictions .....	39
Figure 5: Algorithm for HCW management in influenza outbreaks .....	41

<b>SECTION 6: CONFIRMED GASTROINTESTINAL ILLNESS OUTBREAK .....</b>	<b>42</b>
6.1 Acute care outbreak definition - gastrointestinal illness .....	42
6.2 Case confirmation .....	42
6.3 Duration of outbreak.....	42
6.4 Outbreak communication .....	42
6.4.1 Initial communication.....	42
6.4.2 Ongoing communication.....	43
6.5 Patient movements (admissions/discharges/transfers).....	43
6.5.1 Admissions and incoming transfers .....	43
6.5.2 Outgoing patient movements.....	43
Table 6A: Outgoing patient movement decisions from a GI outbreak unit .....	44
Table 6B: IPC management for outgoing transfers from a GI outbreak unit.....	44
6.6 Patient Considerations .....	45
6.6.1 Patient symptom monitoring.....	45
6.6.2 PPE requirements and additional precautions .....	45
Table 6C: Additional precautions for GI symptoms.....	45
6.6.3 GI testing.....	46
6.6.4 Discontinuation of additional precautions .....	46
6.6.5 Patient cohorting considerations .....	46
6.6.6 Management of “relapse” cases .....	46
6.7 Unit outbreak control measures.....	46
6.7.1 Cleaning and disinfection .....	46
6.7.2 Unit/area entrances.....	47
6.7.3 Personal protective equipment (PPE).....	47
6.7.4 Supplies .....	47
6.7.5 Additional measures.....	47
6.7.6 Designated family / support persons (DFSPs) / visitors .....	47
6.8 WHS/OHS actions and HCW outbreak control measures.....	48
6.8.1 General measures.....	48
6.8.2 HCW personal protective equipment (PPE).....	48
6.8.3 HCW cohorting and non-essential personnel (volunteers, students).....	48
6.8.4 Break areas/gatherings .....	49
6.8.5 Symptomatic HCW and testing recommendations.....	49
6.8.6 Work restrictions .....	49
<b>SECTION 7: CLOSING AN OUTBREAK (COVID-19, RI INCLUDING INFLUENZA, OR GI).....</b>	<b>50</b>
<b>APPENDIX 1: DEFINITION OF TERMS AND GLOSSARY.....</b>	<b>51</b>
<b>APPENDIX 2: ANTIVIRAL CHEMOPROPHYLAXIS FOR INFLUENZA OUTBREAKS .....</b>	<b>53</b>
<b>APPENDIX 3: HCW-RELATED OUTBREAK CONTROL MEASURES FOR INFLUENZA OUTBREAKS.....</b>	<b>55</b>
<b>APPENDIX 4: COVID-19 PATIENT DISCHARGE INSTRUCTIONS .....</b>	<b>57</b>
<b>APPENDIX 5: OUTBREAK MANAGEMENT TEAM MEETING AGENDA .....</b>	<b>59</b>
<b>APPENDIX 6: OUTBREAK CHECKLIST FOR DISCUSSION AT OMT MEETING .....</b>	<b>60</b>
<b>APPENDIX 7: OUTBREAK SPOTLIGHT SIGN .....</b>	<b>64</b>



## Introduction

This guide provides current best practice and evidence-based guidance for preparation, assessment, determination and confirmation (of outbreak type) for COVID-19, respiratory illness (RI) including confirmed influenza, and gastrointestinal illness (GI) outbreaks and related management in acute care settings<sup>1</sup>.

The following individuals are accountable for the development, ongoing review and implementation of this manual:

- AHS MOH Lead for Communicable Diseases Control
- AHS MOH Lead for Safe Healthy Environments
- AHS IPC Senior Medical Director / Designate

### Background

Infectious disease outbreaks occur year-round and in different settings, including acute care facilities. Early recognition of unusual clusters of illness and swift responses are critical to protect high-risk and vulnerable patients who are in close contact with each other in acute care facilities.

Effective outbreak management requires a multidisciplinary approach to facilitate a prompt response to help minimize the impact of the outbreak. This document discusses the roles of Public Health, including MOHs; IPC; Acute Care Operational Leads; Workplace Health and Safety (WHS) / Occupational Health and Safety (OHS); and on-site HCWs. Public Health, IPC and WHS/OHS in acute care work collaboratively with operational leads and HCWs to facilitate a prompt response to help minimize the impact of the outbreak.

**Note:** For the purposes of this document, “WHS” is used throughout and includes both WHS and OHS.

The notification of outbreaks and other infectious disease threats in Alberta is mandated under Section 26 of the provincial [Public Health Act](#), and each MOH is accountable for outbreak investigation and management (Section 29).

#### <sup>1</sup> Notes:

1. Direction about best practices for outbreak management of possible or confirmed outbreaks due to an unusual, infrequent, or emerging/novel infectious disease will be provided by the Medical Officer of Health (MOH) and may extend beyond this document.
2. It is beyond the scope of this document to include *Clostridioides difficile*, multi-drug resistant organisms (e.g., methicillin-resistant *Staphylococcus aureus* [MRSA], carbapenem-resistant organisms [CPO]) and rash-causing organisms due to their unique epidemiological properties.
3. This is not a comprehensive Infection Prevention and Control (IPC) document. It outlines minimum outbreak management strategies and may be enhanced or modified depending on identification of the causative agent. It is important to consider the potential impact of outbreak management measures on the well-being of patients and healthcare workers (HCWs; includes contractors). Consult IPC and/or Public Health for more detailed information.
4. For combined acute care and continuing care sites, application of acute care outbreak measures to continuing care areas in the same facility will be determined on a case-by-case basis. Considerations include (but are not limited to) physical layout, staffing, and shared spaces and/or activities between patients and residents.

### Land Acknowledgement

Our work takes place on historical and contemporary Indigenous lands, including the territories of Treaty 6, Treaty 7 & Treaty 8 and the homeland of the Métis Nation of Alberta and 8 Metis Settlements. We also acknowledge the many Indigenous communities that have been forged in urban centres across Alberta.

## Section 1: Preparing for potential outbreaks

It is the responsibility of acute care facilities to always be prepared for the possibility of a COVID-19, RI (including influenza) or GI outbreak. Each site should:

- Ensure HCWs have access to and are familiar with current AHS outbreak management protocols.
- Review and update internal protocols and procedures for outbreak management as necessary, including, but not limited to:
  - Symptoms which require investigation
  - Reporting to IPC, WHS and/or Public Health [Table 2A](#)
  - Case and outbreak definitions for:
    - COVID-19 [Table 3A](#)
    - Respiratory illness (RI) [Table 3B](#)
    - Influenza [Table 3C](#)
    - Mixed Pathogen [Table 3D](#)
    - Gastrointestinal illness (GI) [Table 3E](#).
- Work with key site personnel to ensure adequate availability of supplies for outbreak management including on-site specimen collection kits for respiratory and stool patient specimen collection.
- Review routine IPC practices and additional outbreak-related measures with HCWs and physicians.

---

### 1.1 Roles and responsibilities for outbreak prevention and management

The RACI matrix outlines the specific responsibilities of the key stakeholder roles by function and task for the major actions associated with outbreak preparation and management.

#### **RACI**

R = Responsible = Does the work

A = Accountable = Delegates the work

C = Consulting = Provides Input

I = Informed = Needs to be told

See [Table 1A](#) RACI Outbreak Matrix.



**Table 1A: RACI outbreak matrix**

Functions	Context	Stakeholder						
		Outbreak Management Team (OMT) Lead <sup>2</sup> and/or MOH	IPC	WHS	Public Health (CDC or SHE/EPH) <sup>3,4</sup>	Site or Unit Manager	Site Leadership	Provincial Lab
Surveillance / Case Finding (Investigate)	HCW (acquired at work)	A	C	R/A	C/I	C	I	
	HCW (acquired in community)	A		R/A	C/I			
	HCW (at work while communicable)	A	C	R/A	C/I	C	I	
	Patient (inpatient unit)	A	R/A	C	C/I	C	I	
	Patient (outpatient unit)	A	R/A	C	C/I	C	I	
	Visitor to unit	A	C	C	C/I	C	I	
Outbreak Declaration		A	C	C	R/A	C	I	I
Notification to AH		A			R/A			
Notification to AHS (e.g., Zone Leads)		A	R				R	
Communication with affected unit(s)	Patients	A	A	C	C/I	R	I	
	HCWs	A	C	A	C/I	R	I	
	Visitors	A	C	C	C/I	R	I	
Implementation of IPC measures		A	C	C	C	R		
Testing Strategy - HCWs		A	C	R/A	R/A	R	I	C
Testing Strategy - Patients		A	R/A	I	R/A		I	C

<sup>2</sup> The OMT Lead:

- Should be an expert in outbreak management such as a MOH or IPC physician.
- Alternatively, a co-lead model could be used in which an IPC physician/MOH and site operations/medical lead are partnered.
- OMT Lead is an independent role (i.e., separate from usual functions and responsibilities).

<sup>3</sup> CDC = Communicable Disease Control

<sup>4</sup> SHE = Safe Healthy Environments; EPH = Environmental Public Health

Functions	Context	Stakeholder						
		Outbreak Management Team (OMT) Lead <sup>2</sup> and/or MOH	IPC	WHS	Public Health (CDC or SHE/EPH) <sup>3,4</sup>	Site or Unit Manager	Site Leadership	Provincial Lab
Monitoring Outbreak control strategies		A	R	R	C	R		
Reporting Outbreak status (tracking and communication)		A	R	R	R/A	R	I	R
Declaring Outbreak over		A	C	C	R/A	C	I	I

## Section 2: Assessing a potential outbreak

### 2.1 Surveillance and threshold for investigation

All acute care sites are responsible for conducting ongoing monitoring for unusual clusters of illness in patients and HCWs. This occurs prior to, during and after outbreaks.

- If patients show signs or symptoms of illness, notify IPC.
- If HCWs show signs or symptoms of illness, notify WHS.
- IPC and/or WHS will investigate further as needed.
- IPC and WHS will report to Public Health when indicated.

**Table 2A: Symptoms which require investigation and reporting to IPC or WHS/OHS to initiate an outbreak investigation**

Patients	Healthcare Workers (HCWs)
<p><b>Any new/worse/unexplained respiratory or core symptoms:</b></p> <ul style="list-style-type: none"> <li>• Cough</li> <li>• Shortness of breath/difficulty breathing/dyspnea</li> <li>• Decreased oxygen saturation or increased oxygen requirement</li> <li>• Sore throat/painful swallowing/hoarse voice</li> <li>• Runny nose/nasal congestion/sneezing</li> <li>• Fever/chills/rigors               <ul style="list-style-type: none"> <li>○ Adults: greater than 37.8°C</li> <li>○ Paediatrics: greater than or equal to 38.0°C</li> </ul> </li> <li>• Loss of/change in sense of smell or taste</li> </ul> <p><b>New or unusual symptoms including but not limited to:</b></p> <ul style="list-style-type: none"> <li>• Headache</li> <li>• Conjunctivitis/red eye/chemosis</li> <li>• Vomiting/diarrhea</li> <li>• Nausea/unexplained loss of appetite</li> <li>• Myalgia (muscle aches) or arthralgia (joint aches)</li> <li>• Fatigue/severe exhaustion</li> <li>• Any additional symptoms at clinician’s discretion (e.g., skin manifestations such as “COVID toes,” altered/change in mental status, etc.)</li> </ul>	<p><b>Any symptoms that are new or worsened (if associated with allergies, chronic or pre-existing conditions):</b></p> <ul style="list-style-type: none"> <li>• Cough</li> <li>• Shortness of breath/difficulty breathing</li> <li>• Runny or stuffy nose</li> <li>• Sore throat</li> <li>• Fever/chills</li> <li>• Nausea/Diarrhea</li> <li>• Loss of sense of smell or taste</li> </ul>

**Note:** Symptoms not listed in [Table 2A](#) may still be indications of illness and should be managed at the discretion of the care team for the individual experiencing the symptoms. However, symptoms not listed in Table A do not need to be reported to Public Health and/or IPC and/or WHS.

## Section 3: Outbreak definitions and determining outbreak type

Both symptoms and laboratory results play a role in determining the type of outbreak. Once laboratory results are available (including if patients or HCWs decline testing), a decision can be made about:

1. Whether the unit/site meets an outbreak definition, and
2. The type of outbreak occurring.

---

### 3.1 Case confirmation

Case confirmation should be done prior to calling Public Health to open the outbreak.

Public Health may also be consulted in the initial investigation to determine acquisition (i.e., hospital or occupational) and/or any epidemiological links.

#### Patient case(s)

IPC will determine and document:

- If case is hospital-acquired and/or epidemiologically linked
- Whether patient was in the outbreak area during the communicable period
- Patient movement during the communicable period.

There may be instances when two (2) or more patients present with respiratory symptoms that are not case-defining but are the same as each other and within a 14-day period.

When this occurs, the unit/site should contact IPC to determine next steps (e.g., continued monitoring, specific interventions, etc.).

#### HCW case(s)

WHS will determine:

- If case is workplace-acquired and/or epidemiologically linked
- If HCW was in the outbreak area during their communicable period
- HCW vaccination status (if applicable) at time of exposure.

---

### 3.2 Declaring an outbreak

The steps in declaring an outbreak are as follows:

#### Step 1

The accountable individual that identifies symptomatic patients or HCWs or at least two (2) confirmed cases notifies the designated Outbreak Management Team (OMT) Lead/designate by the Fastest Means Possible (FMP) (direct voice communication and email).

#### Step 2

The OMT Lead/designate confirms that cases meet definition, consults with Public Health to declare an outbreak and identifies subsequent management/control strategies.

#### Step 3

The OMT Lead/designate determines whether there is a need to convene an OMT meeting based on the type and magnitude of outbreak. If a meeting is required, the OMT Lead/designate convenes a conference call as soon as possible after the initial notification. Regardless of whether a formal meeting is convened, communication of direction must be provided via email to all key stakeholders.

- OMT membership is site-specific but **must** include the following participants:
  - IPC
  - WHS
  - Public Health
  - Unit Manager and/or Patient Care Manager
  - Site Manager/Site Operations
  - Environmental Services
  - Bed Management / Transition Services
  - Allied Health
  
- Optional members of the OMT may include:
  - Pharmacy
  - Laboratory Services
  - Nutrition & Food Services
  - Physician Lead or Program Site Chief for the outbreak unit
  - Physician Lead or Program Site Chief for the outbreak unit
  - Program Executive Director
  - Facility Medical Director
  - Communications representative

**Note:** For combined acute care and continuing care sites, OMT must include representation from both settings.

- See agenda template in [Appendix 5](#).

### 3.3 Case definitions and outbreak criteria

**Table 3A: COVID-19 illness**

(See [Table 2A](#) for COVID-19 symptoms.)

COVID-19 Illness Case Definition <sup>5</sup>	COVID-19 Illness Outbreak Definition
<p>A person with confirmation of infection with the virus (SARS-CoV-2) that causes COVID-19 by:</p> <p>1. A positive result on a molecular test<sup>6</sup> regardless of whether symptoms are present</p> <p><b>OR</b></p> <p>2. One (1) positive result on a Health Canada approved rapid/point-of-care (POC) antigen test in a person with COVID-19 symptoms</p> <p><b>OR</b></p> <p>3. Two (2) positive results on a Health Canada approved rapid/POC antigen test completed at least 24 hours apart in an asymptomatic person</p>	<p>Two (2) or more confirmed hospital-acquired<sup>7</sup> COVID-19 patient case(s) within a 10-day period<sup>8</sup></p> <p><b>OR</b></p> <p>Two (2) or more confirmed<sup>8</sup> COVID-19 cases in HCWs assigned/linked to a unit<sup>9</sup> within a 10-day time period AND where at least one of the HCWs was in the work place during the communicable phase of illness<sup>10</sup> AND/OR it is suspected there has been work site transmission as cause for one or more of the infections. The transmission could have been:</p> <ul style="list-style-type: none"> <li>• Patient to HCW transmission; or</li> <li>• HCW to HCW transmission; or</li> <li>• Visitor to HCW transmission; or</li> <li>• If after detailed review it is clear there was no community risk for infection acquisition for either HCW then even if the transmission link remains thus far unknown, outbreak criteria may be met (for example, HCWs who only go between work and home during “lock-down” periods).</li> </ul> <p><b>Note:</b> If variant testing results are available and results are discordant, then re-assess outbreak status.</p>

- Refer to [Section 4](#) if the COVID-19 illness outbreak definition is met.

<sup>5</sup> Refer to [Alberta Health COVID-19 Public Health Management Guidelines](#) for more details.

<sup>6</sup> A molecular test is a nucleic acid amplification test [NAAT] such as polymerase chain reaction [PCR], loop-mediated isothermal amplification [LAMP] or rapid molecular test that is Health Canada approved or approved by the lab accreditation body of the jurisdiction in which the test was performed at a community, hospital or reference laboratory (NML or a provincial public health laboratory) OR at the point of care OR at home. Positive results by the Abbott ID NOW™ COVID-19, Simplexa®, GeneXpert®, Aptima or BD Max™ nucleic acid amplification test are deemed acceptable to provide a final result (i.e., does not require confirmatory testing).

<sup>7</sup> Laboratory-confirmed COVID-19 infection in a patient admitted to hospital at least four (4) calendar days before symptom onset and who had a swab test positive when collected ≥4 calendar days after admission; OR a patient admitted to hospital for less than four (4) calendar days who is deemed to have a confirmed hospital-acquired COVID-19 infection for any reason.

<sup>8</sup> If one (1) hospital-acquired patient case or one (1) HCW case occurs: patient and HCW contact tracing will occur, and it will be used as an opportunity for heightened surveillance and reinforcement of routine measures and processes. Recommendations or measures specific to a particular exposure event will be made, as appropriate (e.g., patient and/or HCW prevalence testing). Any key learnings and/or actions for quality improvement that may stem from the exposure event will be reviewed and communicated.

<sup>9</sup> “Unit” may refer to a single acute care unit or area, but some units/areas may be viewed as contiguous and should be viewed as though they are one unit for the purposes of this definition due to the flow of HCWs (e.g., Obstetrical Assessment, labour and delivery, and post-partum care). In some settings, a “unit” may refer to those HCWs who during the 10 days preceding the infections were sharing breakrooms or meeting spaces or work spaces.

<sup>10</sup> The communicable phase of illness includes the pre-symptomatic phase (48 hours before first symptom onset) and the 10 days after symptom onset or until symptoms have improved AND afebrile for 24 hours without the use of antipyretic medication, whichever is longer. There are situations where the communicable phase of illness is longer, e.g., immune compromised individuals. Consult with IPC and/or WHS as appropriate.

## COVID-19 Site on Watch

To be defined as a “Site on Watch,” an acute care site must meet **both** one (1) and two (2) below:

1. COVID-19 outbreaks affecting more than 30% of patient care units at a single acute care site AND significant impact on capacity for key services (including but not limited to Medicine, Family Medicine, Critical Care, Surgery).

### **OR**

COVID-19 outbreaks called in two (2) or more support services groups who are itinerant across an acute care site (e.g., Protective Services, Environmental Services, Lab Collections, etc.).

### **AND**

2. As determined by the Site Outbreak Management Team.

**Table 3B: Respiratory illness (RI)**

Patient RI Case Definition <sup>11</sup>		RI Outbreak Definition
New/acute onset of respiratory illness with TWO (2) or more symptoms below, at least ONE (1) of which MUST be respiratory:		Two (2) or more patient RI cases within a 10-day period with a common epidemiological link <sup>12</sup>
<b>Respiratory</b>	<b>Other</b>	<b>OR</b>
<ul style="list-style-type: none"> <li>• Cough</li> <li>• Shortness of breath/difficulty breathing/dyspnea</li> <li>• Decreased O<sub>2</sub> saturation or increased O<sub>2</sub> requirement</li> <li>• Sore throat/painful swallowing/hoarse voice</li> <li>• Runny nose/nasal congestion/sneezing</li> <li>• Loss of/change to sense of taste or smell.</li> </ul>	<ul style="list-style-type: none"> <li>• Fever               <ul style="list-style-type: none"> <li>○ Adults greater than 37.8 °C</li> <li>○ Pediatrics greater than or equal to 38.0 °C</li> </ul> </li> <li>• Headache</li> <li>• Myalgia (muscle ache) or arthralgia (joint pain)</li> <li>• Fatigue (significant and unusual)</li> <li>• Nausea/vomiting/diarrhea</li> </ul>	Two (2) or more HCW RI cases <sup>13</sup> within a 10-day period with a common epidemiological link <sup>12</sup>  <b>Note:</b> <ol style="list-style-type: none"> <li>1. RI case or outbreak includes any non-influenza, non-COVID pathogen.</li> <li>2. Where laboratory confirmation is available, a RI outbreak would be called if at least two RI cases are due to the same confirmed pathogen.</li> <li>3. Patient cases must be hospital-acquired.</li> <li>4. HCW cases must have a common occupational link.</li> </ol>

- Refer to [Section 5](#) if the RI outbreak definition is met.

<sup>11</sup> It is recognized that the definitions for respiratory illness (RI) may differ slightly between this document and the [AHS Inpatient, Emergency and Urgent Care Communicable Disease Screening Tool \(Form 21615\)](#) for patients with suspected RI or COVID-19. These definitions serve different purposes. This definition is for population surveillance whereas the screening tool is a means for HCWs to assess the infectious risk of patients to themselves and others and implement appropriate preventive measures.

<sup>12</sup> Epidemiological link means the cases were acquired in the same location or from the same person in the workplace setting/facility (i.e., during their incubation period or period of communicability), and there is evidence of healthcare-associated transmission within the facility.

<sup>13</sup> Use symptom list in [Table 2A](#).



**Table 3C: Influenza illness**

Influenza Illness Case Definition	Influenza Illness Outbreak Definition
<p>Clinical illness (as defined by RI above) with laboratory confirmation of infection by:</p> <ul style="list-style-type: none"> <li>• Detection of influenza RNA</li> </ul> <p><b>OR</b></p> <ul style="list-style-type: none"> <li>• Demonstration of influenza virus antigen in an appropriate clinical specimen</li> </ul> <p><b>OR</b></p> <ul style="list-style-type: none"> <li>• Isolation of influenza virus from an appropriate clinical specimen</li> </ul> <p><b>OR</b></p> <ul style="list-style-type: none"> <li>• Significant rise (e.g., fourfold or greater) in influenza IgG titre between acute and convalescent sera.</li> </ul>	<p>Two (2) or more confirmed hospital-acquired patient influenza cases within a 7-day period with a common epidemiological link<sup>12</sup></p> <p><b>OR</b></p> <p>Two (2) or more confirmed HCW influenza cases within a 7-day period with a common epidemiological link<sup>12</sup>.</p>

- Refer to [Section 5](#) if the Influenza illness outbreak definition is met.

**Table 3D: Mixed pathogen outbreak (respiratory)**

Mixed Pathogen Outbreak Definition
<p>A mixed pathogen outbreak could result when a combination of infections with different pathogens/viruses are identified on a unit or in a facility. This could result in a combination of:</p> <ul style="list-style-type: none"> <li>• Influenza and COVID-19 cases</li> <li>• Influenza and Respiratory Illness cases</li> <li>• COVID-19 and Respiratory Illness cases</li> <li>• Respiratory Illness outbreak with two different RI organisms or pathogens</li> </ul> <p>Virus-specific outbreak definition must be met for each of the pathogens in the mixed pathogen outbreak. Where a pathogen is not identified, the criteria for a RI outbreak definition must be met.</p> <p><b>Note:</b> The IPC and/or WHS teams, in discussion with Public Health, will advise which recommendations are applied where there is a discrepancy due to a mixed pathogen outbreak. The general principle of applying the more conservative recommendation will be followed.</p>

**Table 3E: Gastrointestinal illness**

Gastrointestinal (GI) Illness Case Definition	GI Illness Outbreak Definition
<p>At least ONE (1) of the following criteria must be met and not be attributed to another cause (e.g., <i>Clostridioides difficile</i> diarrhea, medication, laxatives, diet or prior medical condition etc.):</p> <ul style="list-style-type: none"> <li>Two (2) or more episodes of diarrhea (i.e., loose or watery stools) in a 24-hour period, above what is normally expected for that individual</li> </ul> <p><b>OR</b></p> <ul style="list-style-type: none"> <li>Two (2) or more episodes of vomiting in a 24-hour period</li> </ul> <p><b>OR</b></p> <ul style="list-style-type: none"> <li>One (1) or more episodes of vomiting AND diarrhea in a 24-hour period</li> </ul> <p><b>OR</b></p> <ul style="list-style-type: none"> <li>One (1) episode of bloody diarrhea</li> </ul> <p><b>OR</b></p> <ul style="list-style-type: none"> <li>Laboratory confirmation of a known enteric pathogen AND at least one symptom compatible with a GI infection e.g., nausea, vomiting, diarrhea, abdominal pain or tenderness.</li> </ul>	<p>Two (2) or more hospital-acquired patient GI cases with initial symptom onset within a single 48-hour period with a common epidemiological link<sup>12</sup></p> <p><b>OR</b></p> <p>Two (2) or more HCW GI cases with initial symptom onset within a single 48-hour period with a common epidemiological link<sup>12</sup></p> <p><b>Note:</b> Where laboratory confirmation is available, GI outbreak would be called if at least two GI cases due to the same confirmed pathogen. Discuss with MOH/designate. Consider organism, incubation period, etc.</p>

- Refer to [Section 6](#) if the GI illness outbreak definition is met.

## Section 4: Confirmed COVID-19 outbreak

Review this section if there are one or more patients or HCWs with COVID-19 positive laboratory results.

### 4.1 Acute care COVID-19 outbreak definition

Refer to:

- COVID-19 Illness - [Table 3A](#).

Refer to [Appendix 6](#) for Outbreak Checklist template.

### 4.2 Case confirmation

Refer to [Section 3.1: Case Confirmation](#).

In addition, IPC and/or MOH and/or CDC must confirm that patients testing positive for COVID-19 are acute cases.

### 4.3 Duration of outbreak

- 10 days (i.e., one [1] complete incubation period for the Omicron sub-variant of SARS-CoV-2) from last day of possible exposure provided that serial asymptomatic patient testing is performed. This means that outbreak can be closed on day 11.
- Otherwise use 20 days (i.e., two [2] incubation periods for SARS-CoV-2 Omicron subvariant) and close outbreak on day 21.
- Duration may change at the discretion of IPC Medical Lead and/or Medical Officer of Health if new COVID-19 variant strains are circulating.
- See [Section 7: Closing an Outbreak](#).

### 4.4 Outbreak communication

#### 4.4.1 Initial communication

(When outbreak first declared.)

- IPC or WHS to request an epidemiological investigation number (EI#) from Public Health as per zone process. Include the following information as part of EI# request:
  - Number of COVID-positive patients
  - Number of COVID-positive HCWs
  - Symptom onset date of cases
  - Number of patient close contacts
  - Number of HCW close contacts
  - Number of at-risk patients
  - Number of at-risk HCWs
  - Name and contact information for unit/area manager.
  - Designated IPC contact person.
- IPC to notify (if not already done):
  - Environmental Services
  - Bed Management/equivalent
  - Workplace Health & Safety
  - Unit/Program/Site Leadership.

- IPC / Site Command Post (SCP) / Site Leadership / Communications to distribute on-site outbreak memo/email notification.
- IPC to enter initial outbreak information into provincial IPC outbreak tracking tool.
- Unit / unit managers to notify patients and designated family / support persons (DFSPs).
- Unit to arrange shift huddles: consider initial and ongoing (as needed).
- SCP to notify Zone Emergency Operations Centre (ZEOC) if ZEOC still standing.
  - If no SCP, then Operational / Site Leadership or IPC to send communication to ZEOC using zone/site process.
  - If Incident Command Structure (ICS) not in place, use site/zone non-ICS communication processes.

#### 4.4.2 Ongoing communication

- Unit to notify IPC of new symptomatic or COVID-19 positive patients.
  - “Unit” can be charge nurse, assistant head nurse, unit manager, patient care manager, or any other individual who has been delegated this responsibility.
- Unit to notify WHS of new symptomatic or COVID-19 positive HCWs.
- Communicable Disease Outbreak Daily Report (i.e., REDCap entry) completed and submitted to CDC as per site/zone process.
- IPC to update provincial IPC outbreak tracking tool as needed.
- Outbreak Management Team (OMT) meetings – frequency to be determined by OMT.
- Communication to ZEOC and/or Zone leadership (i.e., daily check-in).
  - SCP to do if in Incident Command Structure.
  - If Incident Command Structure (ICS) not in place, use site/zone non-ICS communication processes.

The following are baseline/minimum recommendations and considerations for a confirmed COVID-19 outbreak in an acute care setting. Additional or more restrictive recommendations may be put in place at the discretion of IPC, WHS/OHS, Public Health and/or the OMT.

For combined acute care and continuing care sites, application of acute care outbreak measures to continuing care areas in the same facility will be determined on a case-by-case basis. Considerations include (but are not limited to) physical layout, staffing, and shared spaces and/or activities between patients and residents.

---

## 4.5 Patient movements (admissions/discharges/transfers)

### 4.5.1 Admissions and incoming transfers

- OMT will determine if:
  - Unit will close to admissions and incoming transfers, or
  - Remain open with any restrictions/specific criteria.

### 4.5.2 Outgoing patient movements

- Minimize patient transfers off unit – should be medically necessary or repatriation to home zone (i.e., no transfers of convenience).
- Notify IPC of all transfers or discharges for patients from outbreak unit and any identified close contacts on other units.
- See [Table 4A](#).

**Table 4A: Outgoing patient movement decisions from a COVID-19 outbreak unit**

Scenario	Action by Unit and/or Bed Co-ordinator / Transition Team
<b>Intra-facility or Inter-facility transfer</b> (i.e., within acute care and acute tertiary rehabilitation)	<ul style="list-style-type: none"> <li>Ensure receiving unit/site is made aware of outbreak and Additional Precautions as necessary.</li> <li>Outbreak unit and receiving unit to notify site IPC<sup>14</sup></li> </ul>
<b>Transfers/Discharges to Continuing Care or other congregate settings</b>	<ul style="list-style-type: none"> <li>Refer to <a href="#">Risk Assessment Matrix</a> to determine if <a href="#">Risk Assessment Worksheet</a> (RAW) and MOH approval is required.</li> <li>Ensure receiving unit/site is made aware of outbreak and any Additional Precautions plus any pertinent direction based on risk assessment.</li> <li>Outbreak unit and receiving unit to notify site IPC<sup>14</sup>.</li> </ul>
<b>Discharges home</b>	<ul style="list-style-type: none"> <li>Provide the completed COVID-19 Patient Discharge Instructions<sup>15</sup> Letter (<a href="#">Appendix 4</a>) to the patient.</li> <li>Outbreak unit and receiving unit to notify site IPC<sup>14</sup>.</li> </ul>

## 4.6 Patient considerations

### 4.6.1 Patient symptom monitoring

- Increase patient symptom monitoring to every 8 hours (i.e., minimum of three (3) times daily).
  - Symptom Identification and Monitoring Form (Form 21616): <https://www.albertahealthservices.ca/frm-21616.pdf>.
  - Seniors / altered cognition: <https://www.albertahealthservices.ca/assets/info/ppih/if-ppih-covid-19-recognizing-early-symptoms-in-seniors.pdf>.
- If patient develops new, changed or worsening symptoms, place patient on Modified Respiratory precautions in a private room (when available). Notify IPC.

### 4.6.2 PPE requirements and additional precautions

- Continuous masking and continuous eye protection on outbreak unit.
- Symptomatic patients:
  - Use Modified Respiratory precautions.
  - Place patient in private accommodation, when available. If private space is not available, then maintain at least two (2) metres of physical separation between bed/stretcher spaces or ensure that there is a barrier between patients (e.g., curtain or screen).
- Asymptomatic patients:
  - Use Routine Practices – during COVID-19 outbreaks this includes continuous masking and eye protection on the affected unit.
- Universal Modified Respiratory precautions are not recommended for COVID-19 outbreaks.
- For more information, refer to the [AHS COVID-19 Personal Protective Equipment website](#).

<sup>14</sup> IPC at the sending site may also directly notify receiving site's IPC team/designate as per site/zone processes.

<sup>15</sup> Please note that most patients being discharged from outbreak unit are considered to have a COVID-19 exposure and this should be checked off in the letter. Possible exception is a recently COVID-recovered patient (<90days) – consult IPC.

### 4.6.3 COVID-19 testing

- Add EI# to any COVID-19 swabs. Mark top right corner of the lab requisition / label and top of nasopharyngeal (NP) swab tube with an X.
- Symptomatic patient testing may be directed by the most responsible healthcare provider (MRHP) or IPC.
  - Patients with recent COVID-19 infection (i.e., within last 90 days) should be retested for COVID-19 if new, changed or worsening symptoms develop.
- Asymptomatic patient testing (close contacts and unit-wide) is directed by IPC or Public Health. Specific direction will be provided for patients with recent COVID-19 infection.

### 4.6.4 Discontinuation of additional precautions

- [Discontinuation of Additional Precautions for Suspected or Confirmed Respiratory Virus Infection Form \(Form 21624\)](#).
- Consult/notify IPC as per agreed upon site process when discontinuing Additional Precautions for patients on the outbreak unit.

### 4.6.5 Patient cohorting considerations

- Cohorting recommendations will depend on outbreak-specific factors. Discuss at OMT.

### 4.6.6 Patient/unit contact tracing and management

- IPC is responsible for patient contact tracing.
  - This includes inpatients, patients transferred to another acute care facility or Continuing Care, and discharged patients.
  - Exposure period for COVID-19 on the outbreak unit starts 48 hours prior to symptom onset of first chronological case.
  - Follow-up period is for ten (10) days since last possible exposure OR duration of outbreak, whichever is shorter.
- Notification of COVID-19 exposures:
  - Inpatients: IPC to follow up with unit(s)
  - Patients discharged to other levels of care or congregate/facility living site: IPC to notify appropriate IPC team or CDC to notify facility
  - Patients discharged home prior to outbreak: no notification unless otherwise directed by OMT
  - DFSP/Visitors: See [Section 4.7.6](#).
- IPC actions:
  - If discharged or transferred off unit:
    - Provide direction about Additional Precautions and any asymptomatic COVID-19 testing if patient transferred from outbreak unit.
    - Check COVID-19 results in NetCare or Connect Care.
    - Check if re-admitted for potential COVID-related illness.
  - If transferred to Continuing Care:
    - Symptom monitoring by facility.
    - Any additional direction to be provided by IPC/PH.
  - If discharged home: follow instructions on discharge letter.
- **Close contacts only:**
  - If admitted in any acute care facility (including on outbreak unit):
    - Place on Modified Respiratory precautions in private accommodation. Must consult IPC prior to any cohorting.
    - Asymptomatic COVID-19 testing to be directed by IPC or Public Health.

- If transferred to Continuing Care:
  - Symptom monitoring by facility
  - Any additional direction to be provided by IPC/PH.

#### 4.6.7 Early antiviral treatment for symptomatic patients (i.e., before causative pathogen identified)

- Treatment decisions are the responsibility of the MRHP.
- [COVID-related therapy](#) is usually considered after laboratory confirmation in conjunction with clinical presentation and immunization status (i.e., is not early antiviral treatment).

**Note:** Hospitalized patients with respiratory symptoms should be empirically treated with oseltamivir for suspected influenza.

- Start influenza related antivirals within 48 hours of onset of symptoms to be effective in reducing the duration and severity of illness and decreasing the rate of complications.
- Re-assess once laboratory results are available.
- Current recommendations will be discussed at the time of the outbreak.

---

### 4.7 Unit outbreak control measures

#### 4.7.1 Cleaning and disinfection

- Enhanced/outbreak cleaning by Environmental Services.
- Frequent cleaning of high touch surfaces by unit staff. Discuss at OMT.
- Only AHS-approved products are to be used.

#### 4.7.2 Unit/area entrances

- Signage at entry points: [Outbreak Spotlight Sign](#).
- Access to alcohol-based hand rub (ABHR) and PPE as applicable at entrance.
- Ensure clear signage that anyone entering unit must check-in at main desk.
  - Consider screening HCWs at area/unit entrance to cue hand hygiene, masking and eye protection for anyone entering the unit.
- Minimize unnecessary traffic onto unit.

#### 4.7.3 Personal protective equipment (PPE)

- Review existing complement of PPE coaches/equivalent. Consider “just in time” training if no unit-based PPE coaches available. See [Provincial PPE Safety Coach Program](#).
- Keep record of noted breaches/errors/gaps and report to unit manager / Clinical Nurse Educator and OMT.

#### 4.7.4 Supplies

- Ensure adequate supplies for:
  - PPE
  - Specimen collection
  - Cleaning and disinfection

#### 4.7.5 Additional measures

- Any patient leaving their bedspace must be masked. Exceptions may be discussed at OMT.
- Wandering patients: [Strategies for the Wandering COVID-19 Patient in Acute Care](#).
- Appointments: Patients from outbreak unit may attend appointments if medically necessary.
  - Patient should be wearing clean clothes, clean mask and performing hand hygiene.
  - Ensure receiving unit/site is notified of any Additional Precautions required.
- Other reasons for leaving unit: Discuss measures with IPC.
- Rehabilitation restrictions:
  - Patients on Modified Respiratory precautions: complete rehabilitation in patient's room.
  - All other patients:
    - Complete rehab on unit.
    - Any patient leaving their bedspace must be masked.
  - Exceptions may be made for discharge planning/assessment; consult IPC.
  - Site-specific processes to be discussed.
- Group activities/therapy: cancel for the duration of the outbreak.
  - Outbreak unit patients should not leave the unit for group therapy.
  - If on-unit group therapy is deemed necessary and is considered safe to proceed by OMT, then only asymptomatic patients from outbreak unit may attend.
    - Patients must be masked or at least 2m physical distance from one another must be maintained.
- Communal dining: restrict if applicable.
- Nutrition centre should be accessed by staff only.
  - Closed to patients and DFSPs/Visitors.
  - Ensure signage posted to cue hand hygiene.
- No shared products (e.g., hand lotions, communal food or candy bowls, etc.).

#### 4.7.6 Designated family / support persons (DFSPs) / visitors

- DFSP/visitor access restrictions may be required during a COVID-19 outbreak.
  - To be discussed by OMT.
  - Ensure site and zone notification process as follows:
    - [Policy - Family Presence: Designated Family/Support Person and Visitor Access](#)
    - [Procedure – Managing Limits to Designated Family Support Person and Visitor Access](#)
  - Exceptions can be made for end-of-life or other extenuating circumstances. Ensure a site approval process is in place.
- DFSPs/visitors should be advised of the potential risk of acquiring illness if they choose to enter the outbreak unit.
- **DFSPs/visitors must not visit when symptomatic or sick.**
- Consider maintaining DFSPs/visitor log. OMT to decide if DFSPs/visitors should log in at the unit entrance or at the room entrance.
- DFSPs/visitors who choose to visit during an outbreak must:
  - Follow Additional Precautions when required; unit staff or PPE coaches should assist with proper donning and doffing.
  - Practice good hand hygiene.
  - Wear a mask continuously while in outbreak-affected unit/area.
    - Use of eye protection is at discretion of OMT.
  - Limit visit to one (1) patient only.
  - Exit the facility immediately after the visit.
- DFSPs/visitors are encouraged to have up-to-date routine immunizations.
- If any DFSP/visitor close contacts identified: IPC and unit will advise about symptom monitoring.



---

## 4.8 WHS/OHS actions and HCW outbreak control measures

(Including volunteers, students, resident physicians, midwives, physicians)

### 4.8.1 General measures

- Review:
  - hand hygiene (HH)
  - continuous masking and eye protection
  - distancing during breaks
  - no shared foods/drinks (including no potlucks or parties)
  - HCWs are not to work if symptomatic.
- Applies to any HCW based on affected unit or entering affected unit for any reason.
- Institute a unit/area HCW log to assist with any ongoing contact tracing efforts.

### 4.8.2 HCW personal protective equipment (PPE)

- Continuous masking and eye protection for HCWs is required on the affected unit.
- Asymptomatic patients: Routine Practices including continuous masking and eye protection.
- Symptomatic patients: Modified Respiratory precautions (including a fit tested N95 respirator when involved in an [AGMP](#)).
- For more information, refer to the [AHS COVID-19 Personal Protective Equipment website](#).
- Unit/IPC to report back on issues identified with PPE/HH/IPC practices, etc. Consider use of PPE coach/equivalent (see [Section 4.7.3](#)).
- PPE recommendations apply to all HCWs regardless of COVID-19 immunization status.

### 4.8.3 HCW cohorting and non-essential personnel (volunteers, students)

- Consider cohorting of staff – i.e., single unit or single site requirements.
  - HCW may work in the outbreak unit as well as other work locations during different shifts.
  - It is assumed that any HCW at work is asymptomatic.
- Limit non-essential personnel in the outbreak unit/area; OMT should discuss and re-assess regularly.
- Non-essential personnel who continue to assist during an outbreak must follow the same measures as HCWs.
- Advise non-essential personnel of the potential risk of acquiring illness during outbreaks.

### 4.8.4 Break areas / gatherings

- Break areas:
  - Monitor break areas for safe IPC practices.
  - Develop a process to track HCWs who may be on break together (proactive for potential contact tracing).
  - Encourage outdoor breaks when warm enough.
- Other off-unit events/gatherings (e.g., Connect Care training, BLS training, etc.):
  - Review recently occurred events – consider for contact tracing purposes and to assess potential linkages in the transmission chain.
  - Upcoming events – no restrictions; re-assess as needed.

#### 4.8.5 Symptomatic HCW and testing recommendations

- Continue to self-monitor for symptoms for any COVID-19 symptoms regardless of immunization status while at and away from work.
  - Emphasize messaging for HCWs to not work while symptomatic.
  - All symptomatic HCWs should continue to test for COVID-19.
- WHS will provide direction about:
  - Any COVID-19 (+/- other respiratory virus) testing required for symptomatic HCWs
  - Any asymptomatic HCW testing.
- Units/WHS report any new symptomatic HCWs and their test results as applicable (i.e., pending, negative, positive).

#### 4.8.6 Work restrictions

- Any HCW who tests COVID-19 positive or who Public Health considers a COVID-19 case should be excluded from work for 5 days or until symptoms improve (including afebrile for 24 hours without the use of fever reducing medications), whichever is longer.
  - Work restriction may be extended at the discretion of the MOH/WHS Medical Consultant.
  - Immunocompromised HCW cases should consult their physician/specialist regarding the duration of their work restriction period and if any additional testing is recommended. WHS Medical Consultant may also be consulted.
- Follow WHS guidelines for work restrictions as applicable.
  - [Directive: Attending Work with COVID-19 Symptoms or a Positive COVID-19 Test.](#)
  - [Frequently Asked Questions: Changes to the Attending Work Directive.](#)

#### 4.8.7 HCW tracing and exposure assessment

- WHS and unit/area manager to compile list of exposed HCWs (including students, physicians, allied health, others).
  - Consulting teams including physicians, and others who come into the unit (e.g., PT, OT, SLP, Environmental Services, FM&E, etc.) should be included in contact tracing.
  - Ensure contracted workers are included in the contact tracing of any AHS HCW cases.
    - Any exposed contracted worker should report to their leader and will be managed using that company's protocols.
- WHS to:
  - Conduct HCW contact tracing.
    - Unit/area manager to pre-screen: [WHS Notification Steps Regarding Occupational Exposures/Outbreaks to COVID-19.](#)
    - WHS will assess all potential exposures using their internal communicable disease management guideline for COVID-19.
  - Provide direction about work restrictions and return to work.

## Section 5: Confirmed respiratory illness (RI) outbreak including confirmed influenza

(Excludes COVID-19: see [Section 4.](#))

### 5.1 Acute care outbreak definition – respiratory illness, influenza, mixed pathogen

Refer to:

- Respiratory Illness (RI): [Table 3B](#)
- Influenza: [Table 3C](#)
- Mixed Pathogen: [Table 3D](#)

Refer to [Appendix 6](#) for Outbreak Checklist template.

### 5.2 Case confirmation

Refer to [Section 3.1: Case Confirmation.](#)

### 5.3 Duration of outbreak

#### 5.3.1 RI outbreak

- If a non-influenza, non-COVID-19 respiratory pathogen is identified, the outbreak will remain open for two incubation periods for that pathogen.
  - See [Table 5A](#) for incubation periods for common respiratory pathogens.  
e.g., the incubation period for human metapneumovirus (hMPV) infection is three (3) to five (5) days, so a hMPV outbreak would remain open until the 11<sup>th</sup> day following symptom onset of the last patient case.
- If no pathogen is identified, an RI outbreak would remain open for seven (7) days i.e., would close on the eighth (8<sup>th</sup>) day following symptom onset of the last case.

#### 5.3.2 Influenza outbreak

- The outbreak would be closed on the eighth (8<sup>th</sup>) day following symptom onset of the last patient case.

#### 5.3.3 Mixed pathogen outbreak

- Outbreak remains open for two incubation periods based on the pathogen with the longest incubation period.
- If COVID-19 is one of the pathogens, then follow COVID-19 outbreak duration [Section 4: Confirmed COVID-19 Outbreak.](#)

#### 5.3.4 Closing an outbreak

- See [Section 7: Closing an Outbreak.](#)

**Table 5A: Organisms Commonly Associated with RI**

(Reference: [IPC Diseases and Conditions Table for Management of Patients in Acute Care](#))

Organism	Common Symptoms / Clinical Presentations	Infectious Substance / How It Is Transmitted	Incubation Period	Period of Communicability	Outbreak Restrictions / Recommendations for Acute Care <sup>16</sup>
<b>Influenza, Seasonal Type A or B</b>	<ul style="list-style-type: none"> <li>• Sudden onset of cough, ↑O<sub>2</sub> requirement, ↓O<sub>2</sub> saturation, fever, muscle or joint aches, fatigue, sore throat</li> <li>• In children under age 5, GI symptoms may also be present.</li> <li>• In patients &lt;5 or ≥65, fever may not be prominent.</li> </ul>	Respiratory secretions transmitted person-to-person by: <ul style="list-style-type: none"> <li>• large respiratory droplets</li> <li>• aerosols e.g., AGMP<sup>17</sup></li> <li>• direct/indirect contact with surfaces, equipment, or body parts recently contaminated with respiratory secretions.</li> </ul>	1 to 4 days	<ul style="list-style-type: none"> <li>• Communicable for duration of symptoms</li> <li>• Maintain precautions until symptom resolution/ improvement/ stabilization for at least 48 hours</li> <li>• For immunocompromised patients: consult with IPC on a case-by-case basis due to prolonged viral shedding</li> </ul>	Refer to <a href="#">Section 5</a>
<b>COVID-19 (SARS-CoV-2)</b>	<ul style="list-style-type: none"> <li>• See <a href="#">Table 2A</a></li> <li>• All symptoms listed are possible COVID-19 symptoms (core and expanded)</li> </ul>	Respiratory secretions transmitted person-to-person by: <ul style="list-style-type: none"> <li>• large respiratory droplets</li> <li>• aerosols e.g., AGMP<sup>17</sup></li> <li>• direct/indirect contact with surfaces, equipment, or body parts recently</li> </ul>	1 to 14 days  <b>Note:</b> The incubation period for SARS-CoV-2 ranges from 2 to 14 days.  However, the incubation period may vary for	<ul style="list-style-type: none"> <li>• Begin up to 48 hours prior to symptom onset.</li> <li>• Continue until patient is considered to be recovered. In acute care, this is usually until 14 days from symptom onset (or from the initial COVID-positive test if symptom onset unknown) and symptoms have improved /stabilized for at</li> </ul>	Refer to <a href="#">Section 4</a>

<sup>16</sup> First day is designated as Day 0; after the first 24 hours is Day 1. If IPC / Public Health / WHS declares the outbreak to be over 7 days after onset of symptoms in the last case, then outbreak closes on the morning of Day 8.

<sup>17</sup> AGMP=[aerosol-generating medical procedure](#).

Organism	Common Symptoms / Clinical Presentations	Infectious Substance / How It Is Transmitted	Incubation Period	Period of Communicability	Outbreak Restrictions / Recommendations for Acute Care <sup>16</sup>
		contaminated with respiratory secretions.	different variants. The typical incubation period for the Omicron family of sub-variants ranges from 1 to 10 days in hospitalized patients.	least 48 hours, whichever is longer. • See <u>Discontinuation of Additional Precautions for Suspected or Confirmed Respiratory Virus Infection Form (Form 21624)</u> for more specific information.	
<b>Respiratory Syncytial Virus (RSV)</b>	<ul style="list-style-type: none"> <li>• Cough, ↑O<sub>2</sub> requirement, ↓O<sub>2</sub> saturation, fever, muscle or joint aches, fatigue, sore throat, runny nose, sneezing, wheezing</li> </ul>	Respiratory secretions transmitted person-to-person by: <ul style="list-style-type: none"> <li>• large respiratory droplets</li> <li>• aerosols e.g., AGMP<sup>17</sup></li> <li>• direct/indirect contact with surfaces, equipment, or body parts recently contaminated with respiratory secretions.</li> </ul>	2 to 8 days	<ul style="list-style-type: none"> <li>• Communicable for duration of symptoms</li> <li>• Maintain precautions until symptom resolution /improvement/stabilization for at least 48 hours.</li> <li>• For immunocompromised patients: consult with IPC on a case-by-case basis due to prolonged viral shedding</li> </ul>	Refer to <a href="#">Section 5</a>
<b>Parainfluenza Type 1, 2, 3, 4</b>	<ul style="list-style-type: none"> <li>• Cough, ↑O<sub>2</sub> requirement, ↓O<sub>2</sub> saturation, fever, muscle or joint aches, fatigue, sore throat, runny nose, sneezing, wheezing, croup, bronchitis</li> </ul>	Respiratory secretions transmitted person-to-person by: <ul style="list-style-type: none"> <li>• large respiratory droplets</li> <li>• aerosols e.g., AGMP<sup>17</sup></li> <li>• direct/indirect contact with surfaces, equipment, or body</li> </ul>	2 to 6 days	<ul style="list-style-type: none"> <li>• Communicable for duration of symptoms; however, cough may persist for 1 to 3 weeks post-acute infection.</li> <li>• Maintain precautions until symptom resolution /improvement/stabilization for at least 48 hours.</li> </ul>	Refer to <a href="#">Section 5</a>

Organism	Common Symptoms / Clinical Presentations	Infectious Substance / How It Is Transmitted	Incubation Period	Period of Communicability	Outbreak Restrictions / Recommendations for Acute Care <sup>16</sup>
		parts recently contaminated with respiratory secretions.		<ul style="list-style-type: none"> <li>For immunocompromised patients: consult with IPC on a case-by-case basis due to prolonged viral shedding</li> </ul>	
<b>Human Metapneumovirus (hMPV)</b>	<ul style="list-style-type: none"> <li>Cough, ↑O<sub>2</sub> requirement, ↓O<sub>2</sub> saturation, fever, muscle or joint aches, fatigue, sore throat, nasal congestion, shortness of breath</li> </ul>	Respiratory secretions transmitted person-to-person by: <ul style="list-style-type: none"> <li>large respiratory droplets</li> <li>aerosols e.g., AGMP<sup>17</sup></li> <li>direct/indirect contact with surfaces, equipment, or body parts recently contaminated with respiratory secretions.</li> </ul>	3 to 5 days	<ul style="list-style-type: none"> <li>Communicable for duration of symptoms</li> <li>Maintain precautions until symptom resolution/improvement/stabilization for at least 48 hours.</li> <li>For immunocompromised patients: consult with IPC on a case-by-case basis due to prolonged viral shedding</li> </ul>	Refer to <a href="#">Section 5</a>
<b>Other Common Respiratory Viruses such as:</b> <ul style="list-style-type: none"> <li><b>Entero / Rhinovirus</b></li> <li><b>Non-COVID-19 Coronaviruses</b></li> <li><b>Adenovirus</b></li> </ul>	<ul style="list-style-type: none"> <li>Sore throat, runny nose, coughing, ↑O<sub>2</sub> requirement, ↓O<sub>2</sub> saturation, sneezing</li> </ul>	Respiratory secretions transmitted person-to-person by: <ul style="list-style-type: none"> <li>large respiratory droplets</li> <li>aerosols e.g., AGMP<sup>17</sup></li> <li>direct/indirect contact with surfaces, equipment, or body parts recently contaminated with respiratory secretions.</li> </ul>	<b>Entero / Rhinoviruses:</b> <ul style="list-style-type: none"> <li>usually 2-3 days</li> </ul> <b>Seasonal Coronaviruses (NOT SARS-CoV-2):</b> <ul style="list-style-type: none"> <li>usually 2-4 days</li> </ul> <b>Adenovirus:</b> <ul style="list-style-type: none"> <li>2-14 days</li> </ul>	<ul style="list-style-type: none"> <li>Communicable for duration of symptoms</li> <li>Maintain precautions until symptom resolution/improvement/stabilization for at least 48 hours</li> <li>For immunocompromised patients: consult with IPC on a case-by-case basis due to prolonged viral shedding</li> </ul>	Refer to <a href="#">Section 5</a>

---

## 5.4 Outbreak communication

### 5.4.1 Initial communication

(When outbreak first declared)

- IPC or WHS to request EI# from Public Health as per zone process. Include the following information as part of EI# request:
  - Number of symptomatic/positive patients
  - Number of symptomatic/positive HCWs
  - Symptom onset date of cases
  - Number of patient close contacts
  - Number of HCW close contacts
  - Number of at-risk patients
  - Number of at-risk HCWs
  - Name and contact information for unit/area manager
  - Designated IPC contact person.
- IPC to notify (if not already done):
  - Environmental Services
  - Bed Management/equivalent
  - Workplace Health & Safety
  - Unit/Program/Site Leadership
  - Pharmacy (to assist with coordinating antiviral prophylaxis if influenza; see [Appendix 2](#)).
- IPC/Site Command Post (SCP) / Site Leadership / Communications to send out on-site outbreak memo/email notification.
- IPC to enter initial outbreak information into provincial IPC outbreak tracking tool.
- Unit / unit manager to notify patients and DFSPs.
- Unit to arrange shift huddles: consider initial and ongoing (as needed).
- SCP to notify Zone Emergency Operations Centre (ZEOC) if ZEOC still standing.
  - If no SCP, then Operational/Site Leadership or IPC to send communication to ZEOC using zone/site process.
  - If Incident Command Structure (ICS) not in place, use site/zone non-ICS communication processes.

### 5.4.2 Ongoing communication

- Unit to notify IPC of new symptomatic or positive patients as per site/zone process.
  - “Unit” can be charge nurse, assistant head nurse, unit manager, patient care manager, or any other individual who has been delegated this responsibility.
- Unit to notify WHS if new symptomatic or positive HCWs as per zone process.
- Communicable Disease Outbreak Daily Report (i.e., REDCap entry) completed and submitted to CDC as per site/zone process.
- IPC to update provincial IPC outbreak tracking tool as needed.
- Outbreak Management Team (OMT) meetings – frequency to be determined by OMT.
- Communication to ZEOC and/or Zone leadership (i.e., daily check-in).
  - SCP to do if in Incident Command Structure.
  - If Incident Command Structure (ICS) not in place, use site/zone non-ICS communication processes.

The following are baseline/minimum recommendations and considerations for a Respiratory Illness (RI) outbreak in an acute care setting. Additional or more restrictive recommendations may be put in place at the discretion of IPC, WHS, Public Health and/or the OMT.

For combined acute care and continuing care sites, application of acute care outbreak measures to continuing care areas in the same facility will be determined on a case-by-case basis. Considerations include (but are not limited to) physical layout, staffing, and shared spaces and/or activities between patients and residents.

## 5.5 Patient movements (admissions/discharges/transfers)

### 5.5.1 Admissions and incoming transfers

- OMT will determine if:
  - Unit will close to admissions and incoming transfers, or
  - Remain open with any restrictions/specific criteria.
- **Note:** For confirmed influenza outbreaks, **any admission restrictions/criteria that are implemented will remain in place for seven (7) days minimum following the onset of symptoms in the last case**, based on recommendations from the Association of Medical Microbiology and Infectious Disease (AMMI) Canada, and as directed by the Public Health.
- This means that any restrictions/criteria in place can be lifted on day eight (8). Any exceptions must be discussed by the OMT.

### 5.5.2 Outgoing patient movements

- Minimize patient transfers off unit – should be medically necessary or repatriation to home zone (i.e., no transfers of convenience).
- Notify IPC of all transfers or discharges for patients from outbreak unit and any identified close contacts on other units.
- See Tables [5B](#), [5C](#) and [5D](#).

**Table 5B: Outgoing patient movement decisions from a RI or influenza outbreak unit**

Scenario	Action by Unit and/or Bed Co-ordinator / Transition Team
<b>Intra-facility or Inter-facility transfer</b> (i.e., within acute care and acute tertiary rehabilitation)	<ul style="list-style-type: none"> <li>• Ensure receiving unit/site is made aware of outbreak and Additional Precautions as necessary. See <a href="#">Table 5E</a>.</li> <li>• Outbreak unit and receiving unit to notify site IPC<sup>18</sup>.</li> </ul>
<b>Transfers/Discharges to Continuing Care or other congregate settings</b>	<ul style="list-style-type: none"> <li>• Refer to <a href="#">Risk Assessment Matrix</a> to determine if <a href="#">Risk Assessment Worksheet</a> (RAW) and MOH approval is required.</li> <li>• Ensure receiving unit/site is made aware of outbreak and any Additional Precautions plus any pertinent direction based on risk assessment. See <a href="#">Table 5E</a>.</li> <li>• Outbreak unit to notify site IPC<sup>18</sup>.</li> </ul>
<b>Discharges home</b>	<ul style="list-style-type: none"> <li>• No further direction.</li> </ul>

<sup>18</sup> IPC at the sending site may also directly notify receiving site's IPC team/designate as per site/zone processes.



**Table 5C: IPC Management for Outgoing Transfers from a Non-Influenza RI Outbreak Unit**

(For influenza A/B outbreak see [Table 5D](#)).

	Current site	Receiving Site	
		Transfer to another acute care unit/facility (i.e., medically necessary)	Transfer to Continuing Care or Other Congregate Settings
<b>Symptomatic patient</b>	Maintain Contact and Droplet Precautions until asymptomatic x 48h.	Place patient in private room. Continue to symptom monitor.  Maintain Contact and Droplet Precautions until asymptomatic x 48h.	Refer to setting-specific <a href="#">Guide for Outbreak Prevention and Control</a> for management recommendations.
<b>Asymptomatic patient</b>	Continue to symptom monitor.	No isolation necessary but private room preferred x 48h. Continue to symptom monitor.	

**Table 5D: IPC Management for Outgoing Transfers from an Influenza A/B Outbreak Unit**

		Current site	Receiving Site	
			Transfer to another acute care unit/facility (i.e., medically necessary)	Transfer to Continuing Care or Other Congregate Settings
<b>Symptomatic patient</b>	Oseltamivir (Treatment)	Continue to symptom monitor.	Place patient in private room. Continue to symptom monitor.	Refer to setting-specific <a href="#">Guide for Outbreak Prevention and Control</a> for management recommendations.
	No Oseltamivir	Maintain Contact and Droplet Precautions until asymptomatic x 48h. Re-assess oseltamivir as needed.	Maintain Contact and Droplet Precautions until asymptomatic x 48h.  Re-assess oseltamivir as needed.	
<b>Asymptomatic patient</b>  <b>Note:</b> Oseltamivir prophylaxis is recommended for all patients on influenza A/B outbreak units.	Oseltamivir (Prophylaxis)	Continue to symptom monitor. IPC to determine need for Additional Precautions for roommate/close contacts. Re-assess oseltamivir as needed.	Private room preferred x 48h.  Continue to symptom monitor.	
	No Oseltamivir	Continue to symptom monitor. IPC to determine need for Additional Precautions for roommate/close contacts. Re-assess oseltamivir as needed.	Maintain any measures in place (including oseltamivir prophylaxis, if indicated).  Re-assess measures as needed.	

## 5.6 Patient Considerations

### 5.6.1 Patient symptom monitoring

- Increase patient symptom monitoring to every 8 hours. (i.e., minimum of three (3) times daily)
  - Symptom Identification and Monitoring Form (Form 21616): <https://www.albertahealthservices.ca/frm-21616.pdf>
  - Seniors/altered cognition: <https://www.albertahealthservices.ca/assets/info/ppih/if-ppih-covid-19-recognizing-early-symptoms-in-seniors.pdf>
  - **Note:** These documents were developed for COVID-19 but are relevant to all types of outbreaks.
- If patient develops new, changed or worsening symptoms, place patient on Modified Respiratory precautions in a private room (when available). Notify IPC.

### 5.6.2 PPE requirements and additional precautions

- Continuous masking and continuous eye protection on outbreak unit.
- Symptomatic patients:
  - See [Table 5E](#).
  - Place patient in private accommodation, when available. If private space is not available, then maintain at least two (2) metres of physical separation between bed/stretchers spaces or ensure that there is a barrier between patients (e.g., curtain or screen).

**Table 5E: Additional precautions for respiratory symptoms**

	Prior to pathogen being identified	Pathogen identified as SARS-CoV-2	Non-SARS-CoV-2 pathogen identified (i.e., seasonal respiratory virus)	No specific pathogen identified (i.e., COVID-negative and RPP-negative)
Respiratory symptoms present	Modified Respiratory	Modified Respiratory	Contact + Droplet	Modified Respiratory

- Asymptomatic patients:
  - Use Routine Practices – during RI outbreaks this includes continuous masking and eye protection on the affected unit.
- Universal precautions (Contact and Droplet or Modified Respiratory) are not recommended for RI outbreaks.
- For more information, refer to [Personal Protective Equipment | Alberta Health Services](#).

### 5.6.3 RI testing

- Symptomatic patient testing will be directed by MRHP or IPC.
  - Request Respiratory Pathogen Panel (RPP) and COVID-19 testing.
  - Check off “outbreak investigation” on Microbiology requisition.
  - Add EI# to any nasopharyngeal (NP) swab. Mark top right corner of the lab requisition/label and top of nasopharyngeal (NP) swab tube with an X.

- Patients with recent COVID-19 infection (i.e., within last 90 days) should be retested for COVID-19 if new, changed or worsening symptoms develop.
- There is no asymptomatic testing for RI/influenza outbreaks.

#### 5.6.4 Discontinuation of additional precautions

- [Discontinuation of Additional Precautions for Suspected or Confirmed Respiratory Virus Infection Form \(Form 21624\)](#).
- Consult/notify IPC as per agreed upon site process when discontinuing Additional Precautions for patients on the outbreak unit.

#### 5.6.5 Patient cohorting considerations

- Cohorting recommendations will depend on outbreak-specific factors. Discuss at OMT.

#### 5.6.6 Patient contact tracing

- IPC is responsible for patient contact tracing and will determine if there are any patient close contacts who require follow-up (i.e., additional precautions +/- prophylaxis).

#### 5.6.7 Early antiviral treatment for symptomatic patients (i.e., before causative pathogen identified)

- Treatment decisions are the responsibility of the MRHP.
  - Hospitalized patients with respiratory symptoms should be empirically treated with oseltamivir for potential influenza.
  - This can be re-assessed based on laboratory results.
- Start antivirals within 48 hours of onset of symptoms to be effective in reducing the duration and severity of illness and decreasing the rate of complications. Current recommendations will be discussed at the time of the outbreak.

#### **INFLUENZA ONLY: Post-exposure antiviral chemoprophylaxis** (see [Appendix 2](#))

The recommendation to implement antiviral chemoprophylaxis for outbreak management is made by the IPC physician / MOH.

- Antiviral prophylaxis is used for asymptomatic at-risk patients. Symptomatic individuals require treatment doses (i.e., not prophylaxis).
- Pharmacy should be included in the OMT for suspect and confirmed influenza outbreaks to help co-ordinate post-exposure chemoprophylaxis for patients.

---

### 5.7 Unit outbreak control measures

#### 5.7.1 Cleaning and disinfection

- Enhanced/outbreak cleaning by Environmental Services.
- Frequent cleaning of high touch surfaces by unit staff. Discuss at OMT.
- Only AHS-approved products are to be used.

#### 5.7.2 Unit/area entrances

- Signage at entry points: [Outbreak Spotlight Sign](#).
- Access to alcohol-based hand rub and PPE as applicable at entrance.
- Ensure clear signage that anyone entering unit must check-in at main desk.
  - Consider screening HCWs at area/unit entrance to cue hand hygiene, masking, and eye protection for anyone entering the affected unit.

- Minimize unnecessary traffic onto unit.

### 5.7.3 Personal protective equipment (PPE)

- Review existing complement of PPE coaches/equivalent. Consider “just in time” training if no unit-based PPE coaches available. See [Provincial PPE Safety Coach Program](#).
- Keep record of noted breaches/errors/gaps and report to unit manager / Clinical Nurse Educator and OMT.

### 5.7.4 Supplies

- Ensure adequate supplies for:
  - PPE
  - Specimen collection
  - Cleaning and disinfection.

### 5.7.5 Additional measures

- Until COVID-19 is ruled out: Any patient leaving their bedspace must be masked. Exceptions may be discussed at OMT.
- Wandering patients: <https://www.albertahealthservices.ca/assets/info/ppih/if-ppih-covid-19-care-of-wandering-covid19-patient-acute-care.pdf>.
  - This document was developed for COVID-19 but is relevant to all types of outbreaks.
- Appointments: Patients from outbreak unit may attend appointments if medically necessary.
  - Patient should be wearing clean clothes and performing hand hygiene.
  - Patient to also wear clean mask if on Contact and Droplet or Modified Respiratory precautions.
  - Ensure receiving unit/site is notified of any Additional Precautions required.
- Other reasons for leaving unit: Discuss measures with IPC.
- Rehabilitation restrictions:
  - Patients on Modified Respiratory/Contact and Droplet precautions: complete rehabilitation in patient’s room.
  - All other patients:
    - Complete rehabilitation on unit.
- Until COVID-19 is ruled out: Any patient leaving their bedspace must be masked.
  - Exceptions may be made for discharge planning/assessment; consult IPC.
  - Site-specific processes to be discussed.
- Group activities/therapy: cancel for the duration of the outbreak.
  - Outbreak unit patients should not leave the unit for group therapy.
  - If on-unit group therapy is deemed necessary and is considered safe to proceed by OMT, then only asymptomatic patients from outbreak unit may attend.
    - Until COVID-19 is ruled out: Patients must be masked or at least 2m physical distance from one another must be maintained.
- Communal dining: restrict if applicable.
- Nutrition centre should be accessed by staff only.
  - Closed to patients and DFSPs/Visitors.
  - Ensure signage posted to cue hand hygiene.
- No shared products (e.g., hand lotions, communal food or candy bowls, etc.).

### 5.7.6 Designated family / support persons (DFSPs) / Visitors

- DFSP/visitor access restrictions may be required during a RI/influenza outbreak.
  - To be discussed by OMT.

- Ensure site and zone notification process as follows:
  - [Policy - Family Presence: Designated Family/Support Person and Visitor Access](#)
  - [Procedure – Managing Limits to Designated Family Support Person and Visitor Access](#).
- Exceptions can be made for end-of-life or other extenuating circumstances. Ensure a site approval process is in place.
- DFSPs/visitors should be advised of the potential risk of acquiring illness if they choose to enter the outbreak unit.
- **DFSPs/visitors must not visit when symptomatic or sick.**
- Consider maintaining DFSPs/visitor log. OMT to decide if DFSPs/visitors should log in at the unit entrance or at the room entrance.
- DFSPs/visitors who choose to visit during an outbreak must:
  - Follow Additional Precautions when required; unit staff or PPE coaches should assist with proper donning and doffing.
  - Practice good hand hygiene.
  - Wear a mask continuously while in outbreak-affected unit/area.
    - Use of eye protection is at discretion of OMT.
  - Limit visit to one (1) patient only.
  - Exit the facility immediately after the visit.
- DFSPs/visitors are encouraged to have up-to-date date routine immunizations.
- IPC and unit to advise significant DFSPs/visitor close contacts to symptom monitor as applicable.

---

## 5.8 WHS/OHS actions and HCW outbreak control measures

(Including volunteers, students, resident physicians, midwives, physicians)

### 5.8.1 General measures

- Review:
  - hand hygiene
  - continuous masking and eye protection
  - distancing during breaks
  - no shared foods/drinks (including no potlucks or parties)
  - HCWs are not to work if symptomatic.
- Applies to any HCW based on affected unit or entering affected unit for any reason.
- Consider a unit/area HCW log to assist with any ongoing contact tracing efforts.

### 5.8.2 HCW personal protective equipment (PPE)

- Continuous masking and eye protection for HCWs is required on the affected unit.
- Asymptomatic patients: Routine Practices including continuous masking and eye protection.
- Symptomatic patients: see [Table 5E](#).
- For more information, refer to the [AHS COVID-19 Personal Protective Equipment website](#).
- Unit/IPC to report back on issues identified with PPE/HH/IPC practices etc. Consider use of PPE coach/equivalent (see [Section 5.7.3](#) above).
- PPE recommendations apply to all HCWs regardless of COVID-19 and influenza immunization status.

### 5.8.3 HCW cohorting and non-essential personnel (volunteers, students)

- Consider cohorting of staff – i.e., single unit or single site requirements.
  - **For influenza:** HCWs working at more than one facility/unit must inform the alternate facility/unit that an influenza outbreak is in progress in the index facility to determine whether or not they are permitted to work at the alternate facility/unit.
- Limit non-essential personnel in the outbreak unit/area. OMT should discuss and re-assess regularly.
- Non-essential personnel who continue to assist during an outbreak must follow the same measures as HCWs.
  - **For influenza:** see [Figure 5](#).
- Advise non-essential personnel of the potential risk of acquiring illness during outbreaks.

### 5.8.4 Break areas / gatherings

- Break areas:
  - Monitor break areas for safe IPC practices.
  - Consider a process to track HCWs who may be on break together (proactive for potential contact tracing).
  - Encourage outdoor breaks when warm enough.
- Other off-unit events/gatherings (e.g., Connect Care training, BLS training etc.):
  - Review recently occurred events – consider for contact tracing purposes and to assess potential linkages in the transmission chain.
  - Upcoming events – no restrictions.

### 5.8.5 Symptomatic HCW and Testing Recommendations

- Continue to self-monitor for symptoms regardless of immunization status while at and away from work.
  - Emphasize messaging for HCWs to not work while symptomatic.
- Testing for respiratory viruses is for individual clinical management only and is at the discretion of the HCW's care provider in the community. However, during an outbreak, WHS may provide further direction.
  - All symptomatic HCWs should continue to test for COVID-19.
- Units/WHS report any new symptomatic HCWs and their test results as applicable (i.e., pending, negative, positive).
- No asymptomatic testing for RI and influenza outbreaks.

### 5.8.6 Work Restrictions

- Any HCW who tests COVID-19 positive: see [Section 4.8.6](#).
- Any symptomatic HCW who has tested negative for COVID-19:
  - For influenza outbreak:
    - See [Figure 5](#) and [WHS Influenza Outbreak Management guideline](#).
  - For RI outbreak (non-COVID, non-influenza):
    - Any HCW with RI who has tested negative for COVID-19 is restricted from work at all healthcare facilities until symptoms improve and the HCW is fever-free for 24 hours (without the use of fever-reducing medications).
    - See [Directive: Attending Work with COVID-19 Symptoms or a Positive COVID-19 Test](#) for definition of “testing negative for COVID-19” (Section 2.1 on page 2).
- Work restriction may be extended at the discretion of the MOH/WHS Medical Consultant.

- Immunocompromised HCW cases should consult their physician/specialist regarding the duration of their work restriction period and if any additional testing is recommended. WHS Medical Consultant may also be consulted.

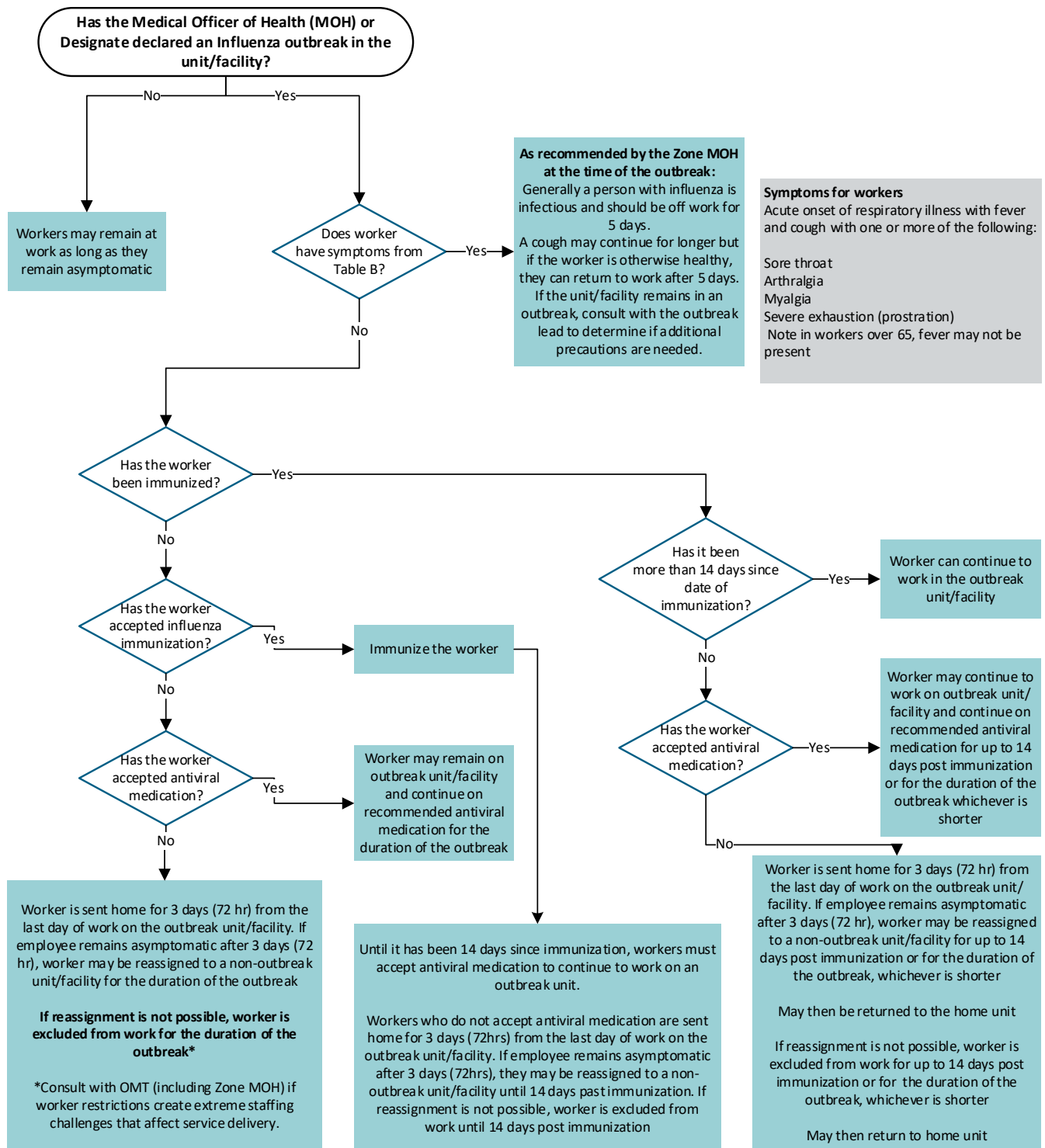
**For influenza outbreaks only:**

- Sites must comply with HCW influenza immunization policy. There are additional work restrictions based on influenza immunization status regardless of symptoms.
- See [Figure 5](#) and [WHS Influenza Outbreak Management guideline](#).



### Figure 5: Algorithm for HCW management in influenza outbreaks

(For more information see [Appendix 3: HCW-Related Outbreak Control Measures for Influenza Outbreaks.](#))



## Section 6: Confirmed gastrointestinal illness outbreak

### 6.1 Acute care outbreak definition - gastrointestinal illness

Refer to:

- Gastrointestinal Illness (GI) – [Table 3E](#).

Refer to [Appendix 6](#) for Outbreak Checklist template.

### 6.2 Case confirmation

Refer to [Section 3.1: Case Confirmation](#).

### 6.3 Duration of outbreak

- 48 hours from symptom resolution in the last case OR 96 hours from onset of symptoms in the last case, **whichever occurs first**.
- See [Section 7: Closing an Outbreak](#).

### 6.4 Outbreak communication

#### 6.4.1 Initial communication

(When outbreak first declared)

- IPC or WHS or MOH/Public Health to request EI# from Safe Healthy Environments (SHE) team (previously Environmental Public Health [EPH]) as per zone process. Include the following information as part of EI# request:
  - Number of symptomatic/positive patients
  - Number of symptomatic/positive HCWs
  - Symptom onset date of cases
  - Number of patient close contacts
  - Number of HCW close contacts
  - Number of at-risk patients
  - Number of at-risk HCWs
  - Name and contact information for unit/area manager
  - Designated IPC contact person.
- IPC to notify (if not already done):
  - Environmental Services
  - Bed Management/equivalent
  - Workplace Health & Safety
  - Unit / Program / Site Leadership.
- IPC / Site Command Post (SCP) / Site Leadership / Communications to send out on-site outbreak memo/email notification.
- IPC to enter initial outbreak information into provincial IPC outbreak tracking tool.
- Unit / unit managers to notify patients and DFSPs.
- Unit to arrange shift huddles: consider initial and ongoing (as needed)
- SCP to notify Zone Emergency Operations Centre (ZEOC) if ZEOC still standing.
  - If no SCP, then Operational/Site Leadership or IPC to send communication to ZEOC using zone/site process.
  - If Incident Command Structure (ICS) not in place, use site/zone non-ICS communication processes.

## 6.4.2 Ongoing communication

- Unit to notify IPC of new symptomatic or positive patients as per site/zone process.
  - “Unit” can be charge nurse, assistant head nurse, unit manager, patient care manager, or any other individual who has been delegated this responsibility.
- Unit to notify WHS if new symptomatic or positive HCWs as per zone process.
- Daily line list/tracking sheet completed and submitted to SHE as per site/zone process.
- IPC to update provincial IPC outbreak tracking tool as needed.
- Outbreak Management Team meetings (OMT) – frequency to be determined by OMT.
- Communication to ZEOC and/or Zone leadership (i.e., daily check-in).
  - SCP to do if in Incident Command Structure
  - If Incident Command Structure (ICS) not in place, use site/zone non-ICS communication processes.

The following are baseline/minimum recommendations and considerations for a Gastrointestinal Illness (GI) outbreak in an acute care setting. Additional or more restrictive recommendations may be put in place at the discretion of IPC, WHS, Public Health and/or the Outbreak Management Team (OMT).

For combined acute care and continuing care sites, application of acute care outbreak measures to continuing care areas in the same facility will be determined on a case-by-case basis. Considerations include (but are not limited to) physical layout, staffing, and shared spaces and/or activities between patients and residents.

---

## 6.5 Patient movements (admissions/discharges/transfers)

### 6.5.1 Admissions and incoming transfers

- OMT will determine if:
  - Unit will close to admissions and incoming transfers, or
  - Remain open with any restrictions/specific criteria.

### 6.5.2 Outgoing patient movements

- Minimize patient transfers off unit – should be medically necessary or repatriation to home zone (i.e., no transfers of convenience).
- Notify IPC of all transfers or discharges for patients from outbreak unit and any identified close contacts on other units. See Tables [6A](#) and [6B](#) for more information.

**Table 6A: Outgoing patient movement decisions from a GI outbreak unit**

Scenario	Action by Unit and/or Bed Co-ordinator / Transition Team
<b>Intra-facility or Inter-facility transfer</b> (i.e., within acute care and acute tertiary rehabilitation)	<ul style="list-style-type: none"> <li>Ensure receiving unit/site is made aware of outbreak and Additional Precautions as necessary. See <a href="#">Table 6C</a>.</li> <li>Outbreak unit and receiving unit to notify site IPC<sup>19</sup>.</li> </ul>
<b>Transfers/Discharges to Continuing Care or other congregate settings</b>	<ul style="list-style-type: none"> <li>Discuss with OMT as needed to assist with zone-specific processes.</li> <li>Ensure receiving unit/site is made aware of outbreak and any Additional Precautions plus any pertinent direction based on risk assessment. See <a href="#">Table 6C</a>.</li> <li>Outbreak unit to notify site IPC<sup>19</sup>.</li> </ul>
<b>Discharges home</b>	<ul style="list-style-type: none"> <li>No further direction.</li> </ul>

**Table 6B: IPC management for outgoing transfers from a GI outbreak unit**

	Current site	Receiving Site	
		Transfer to another acute care unit/facility (i.e., medically necessary)	Transfer to Continuing Care or Other Congregate Settings
<b>Symptomatic patient</b>	Maintain Additional Precautions <sup>20</sup> until asymptomatic x 48h.	Place patient in private room. Continue to symptom monitor. Maintain Additional precautions until asymptomatic x 48h.	Refer to setting-specific <a href="#">Guide for Outbreak Prevention and Control</a> for management recommendations.
<b>Asymptomatic patient</b>	Continue to symptom monitor.	Ensure receiving site IPC is aware. Continue to symptom monitor.	

<sup>19</sup> IPC at the sending site may also directly notify receiving site's IPC team/designate as per site/zone processes.

<sup>20</sup> Use Contact Precautions if diarrhea only. Use Contact and Droplet Precautions if emesis/vomiting present.

## 6.6 Patient Considerations

### 6.6.1 Patient symptom monitoring

- Increase patient symptom monitoring to every 8 hours. (i.e., minimum of three (3) times daily)
  - Symptom Identification and Monitoring Form (Form 21616): <https://www.albertahealthservices.ca/frm-21616.pdf>
  - Seniors/altered cognition: <https://www.albertahealthservices.ca/assets/info/ppih/if-ppih-covid-19-recognizing-early-symptoms-in-seniors.pdf>
  - **Note:** These documents were developed for COVID-19 but are relevant to all types of outbreaks.
- If any patient develops new, changed or worsening symptoms:
  - See [Table 6C](#) below for recommended Additional Precautions.
  - Private accommodation recommended.
  - Notify IPC.

### 6.6.2 PPE requirements and additional precautions

- Symptomatic patients:
  - See [Table 6C](#).
  - Place patient in private accommodation, when available. If private space is not available, then maintain at least two (2) metres of physical separation between bed/stretchers spaces or ensure that there is a barrier between patients (e.g., curtain or screen).
- Asymptomatic patients:
  - Use Routine Practices.
- Universal Additional Precautions are not recommended for GI outbreaks.
- For more information, refer to [Personal Protective Equipment | Alberta Health Services](#).

**Table 6C: Additional precautions for GI symptoms**

GI Symptoms	Prior to pathogen being identified	Pathogen identified as SARS-CoV-2	Pathogen identified as <i>C. difficile</i> <sup>21</sup>	Other enteric pathogen identified
<b>Vomiting/Emesis</b>	Modified Respiratory	Modified Respiratory	n/a	Contact + Droplet
<b>Diarrhea</b>	Modified Resp <b>PLUS</b> Contact Sporicidal	Modified Respiratory	Contact Sporicidal	Contact
<b>Vomiting PLUS diarrhea</b>	Modified Resp <b>PLUS</b> Contact Sporicidal	Modified Respiratory	Contact + Droplet <b>PLUS</b> Contact Sporicidal	Contact + Droplet

<sup>21</sup> *C. difficile* outbreaks are outside the scope of this document. For further direction about *C. difficile* outbreak management, discuss with site-based IPC team.

### 6.6.3 GI testing

- Symptomatic patient testing will be directed by MRHP or IPC.
  - Request:
    - Stool culture (bacterial enteric screen/panel)
    - Gastrointestinal Viral Panel (viruses)
    - C. difficile toxin
    - COVID-19 testing (NP swab).
  - Consider:
- Stool for ova and parasites.
  - Add EI# to any specimens collected.
    - For COVID-19 testing, mark top right corner of the lab requisition/label and top of nasopharyngeal (NP) swab tube with an X.
- There is no asymptomatic testing for GI outbreaks.

**Note:** *C. difficile* outbreaks are outside the scope of this document. For further direction about *C. difficile* outbreak management, discuss with site-based IPC team.

### 6.6.4 Discontinuation of additional precautions

- Consult/notify IPC as per agreed upon site process when discontinuing Additional Precautions for patients on the outbreak unit.

### 6.6.5 Patient cohorting considerations

- Cohorting recommendations will depend on outbreak-specific factors. Discuss at OMT.

### 6.6.6 Management of “relapse” cases

- GI cases frequently “relapse” (i.e., experience onset of vomiting or diarrhea after being asymptomatic for 24 to 48 hours).
- The relapse is likely due to malabsorption during an existing norovirus or other enteric infection rather than being a new infection.
- Maintain Additional Precautions/isolation for “relapse” GI cases until they are free of vomiting and diarrhea for 48 hours, as they may still be communicable.
- These should NOT be counted as new outbreak cases and should therefore NOT be included on daily case listings.
  - A patient should only be counted as a new case once on a daily case listing.
  - Relapse case(s) alone would not result in the extension of the outbreak and any related restrictions.
- **Note:** If a previously identified GI case has onset of GI symptoms after being symptom-free for **at least seven (7) days**, the patient is considered to be a new case.

---

## 6.7 Unit outbreak control measures

### 6.7.1 Cleaning and disinfection

- Enhanced/outbreak Cleaning by Environmental Services.
- Frequent cleaning of high touch surfaces by unit staff.
- Only AHS-approved products are to be used.

### 6.7.2 Unit/area entrances

- Signage at entry points: [Outbreak Spotlight Sign](#).
- Access to alcohol-based hand rub and PPE as applicable at entrance.
- Ensure clear signage that anyone entering unit must check-in at main desk.
  - Consider screening staff at area/unit entrance to cue hand hygiene for anyone entering the unit.
- Minimize unnecessary traffic onto unit.

### 6.7.3 Personal protective equipment (PPE)

- Review existing complement of PPE coaches/equivalent. Consider “just in time” training if no unit-based PPE coaches available. See [Provincial PPE Safety Coach Program](#).
- Keep record of noted breaches/errors/gaps and report to unit manager / Clinical Nurse Educator and OMT.

### 6.7.4 Supplies

- Ensure adequate supplies for:
  - PPE
  - Specimen collection
  - Cleaning and disinfection.

### 6.7.5 Additional measures

- Wandering patients: <https://www.albertahealthservices.ca/assets/info/ppih/if-ppih-covid-19-care-of-wandering-covid19-patient-acute-care.pdf>.
  - This document was developed for COVID-19 but is relevant to all types of outbreaks.
- Appointments: Patients from outbreak unit may attend appointments if medically necessary.
  - Patient should be wearing clean clothes and performing hand hygiene.
  - Ensure receiving unit/site is notified of any Additional Precautions required.
- Other reasons for leaving unit: Discuss measures with IPC.
- Rehabilitation restrictions:
  - Patients on any type of Additional Precautions for GI symptoms: complete rehabilitation in patient’s room.
  - All other patients: complete rehabilitation on unit.
  - Exceptions may be made for discharge planning/assessment; consult IPC.
  - Site-specific processes to be discussed.
- Group activities/therapy: cancel for the duration of the outbreak.
  - Outbreak unit patients should not leave the unit for group therapy.
  - If on-unit group therapy is deemed necessary and is considered safe to proceed by OMT, then only asymptomatic patients from outbreak unit may attend.
- Communal dining: restrict if applicable.
- Nutrition centre should be accessed by staff only.
  - Closed to patients and DFSPs/visitors.
  - Ensure signage posted to cue hand hygiene.
- No shared products (e.g., hand lotions, communal food or candy bowls, etc.).

### 6.7.6 Designated family / support persons (DFSPs) / visitors

- DFSP/visitor access restrictions may be required during a GI outbreak.
  - To be discussed by OMT.
  - Ensure site and zone notification process as follows:

- [Policy - Family Presence: Designated Family/Support Person and Visitor Access.](#)
- [Procedure – Managing Limits to Designated Family Support Person and Visitor Access.](#)
  - Exceptions can be made for end-of-life or other extenuating circumstances. Ensure a site approval process is in place.
- DFSPs/visitors should be advised of the potential risk of acquiring illness if they choose to enter the outbreak unit.
- **DFSPs/visitors must not visit when symptomatic or sick.**
- Consider maintaining DFSPs/visitor log. OMT to decide if DFSPs/visitors should log in at the unit entrance or at the room entrance.
- DFSPs/visitors who choose to visit during an outbreak must:
  - Follow Additional Precautions when required; unit staff or PPE coaches should assist with proper donning and doffing.
  - Practice good hand hygiene.
  - Limit visit to one (1) patient only.
  - Exit the facility immediately after the visit.
- DFSPs/visitors are encouraged to have up-to-date date routine immunizations.
- IPC and unit to advise significant DFSPs/visitor close contacts to symptom monitor as applicable.

---

## 6.8 WHS/OHS actions and HCW outbreak control measures

(Including volunteers, students, resident physicians, midwives, physicians)

### 6.8.1 General measures

- Review:
  - hand hygiene
  - no shared foods/drinks (including no potlucks or parties)
  - HCWs are not to work if symptomatic.
- Applies to any HCW based on affected unit or entering affected unit for any reason.
- Consider a unit/area HCW log to assist with any ongoing contact tracing efforts.

#### **Statement on use of alcohol-based hand rub (ABHR) during GI illness outbreaks**

Handwashing with soap and water is preferred during GI outbreaks. However, if a hand hygiene sink is not available, then use ABHR (minimum 60-90% alcohol) when leaving the room prior to accessing a sink within or outside of patient room.

### 6.8.2 HCW personal protective equipment (PPE)

- Asymptomatic patients: Routine Practices.
- Symptomatic patients: see [Table 6C](#).
- For more information, refer to the [Personal Protective Equipment | Alberta Health Services](#).
- Unit/IPC to report back on issues identified with PPE/HH/IPC practices etc. Consider use of PPE coach/equivalent (see [Section 6.7.3](#)).

### 6.8.3 HCW cohorting and non-essential personnel (volunteers, students)

- Consider cohorting of staff – i.e., single unit or single site requirements.
  - Asymptomatic HCW may work in the outbreak unit as well as other work locations during different shifts.



- Limit non-essential personnel in the outbreak unit/area; OMT should discuss and re-assess regularly.
- Non-essential personnel who continue to assist during an outbreak must follow the same measures as HCWs.
- Advise non-essential personnel of the potential risk of acquiring illness during outbreaks.

#### 6.8.4 Break areas/gatherings

- Break areas:
  - Monitor break areas for safe IPC practices.
  - Consider a process to track HCWs who may be on break together (proactive for potential contact tracing).
- Other off-unit events/gatherings (e.g., Connect Care training, BLS training etc.):
  - Review recently occurred events – consider for contact tracing purposes and to assess potential linkages in the transmission chain.
  - Upcoming events – no restrictions.

#### 6.8.5 Symptomatic HCW and testing recommendations

- Continue to self-monitor for symptoms while at and away from work.
  - Emphasize messaging for HCWs to not work while symptomatic.
  - WHS will provide direction about testing for symptomatic HCWs.
- Units/WHS report any new symptomatic HCWs and their test results as applicable (i.e., pending, negative, positive).
- No asymptomatic testing for GI outbreaks.

#### 6.8.6 Work restrictions

- Any HCW that fits the case definition for GI illness should be excluded from work at all care facilities until 48 hours following the last episode of vomiting and/or diarrhea.
  - Work restriction may be extended at the discretion of the MOH/WHS Medical Consultant.
- Immunocompromised HCW cases should consult their physician/specialist regarding the duration of their work restriction period and if any additional testing is recommended. WHS Medical Consultant may also be consulted.

## Section 7: Closing an outbreak (COVID-19, RI including influenza, or GI)

An outbreak may be closed when:

- Duration criteria are met, including no new patients or HCWs under investigation.
- There are no outstanding issues or concerns from:
  - IPC
  - WHS
  - Public Health (i.e., CDC/SHE/MOH)
  - Outbreak unit/site.

IPC or WHS (as appropriate) will consult with Public Health prior to closing the outbreak.

Ensure that enhanced unit-wide cleaning is done the day that the outbreak is closed prior to officially lifting outbreak-related restrictions.

Following an outbreak:

- Key program leads need to review and evaluate their role in management of the outbreak and revise internal protocols (where necessary) for improvement.
- A debrief may be called by any OMT member to address any aspect of outbreak management.
- Depending on type and scale of the outbreak, a summary report including background, details of the investigation, results and recommendations may be written by a member of the OMT and shared with internal/external partners.

If additional patients or HCWs develop symptoms within 7 days of the outbreak being closed, the unit/site should follow the steps for assessing a potential outbreak in [Section 2: Assessing a Potential Outbreak](#).

## Appendix 1: Definition of Terms and Glossary

**Acute Care:** includes all urban and rural hospitals, psychiatric facilities and urgent care facilities where inpatient care is provided.

**Admission and transfer status:** determined in consultation with the Outbreak Management Team (OMT) and categorized as follows:

- **“Open”:** The facility/unit remains open to all patient admissions, transfers and discharges.
- **“Restricted”:** Depending upon the circumstances and the infectious agent involved, admission and transfer status may range from NO admission to selected patient admissions, transfers and discharges as permitted under the direction of the zone Medical Officer of Health and in consultation with the OMT. This approach is intended to be flexible allowing for individual assessments to be made based on established criteria without undue risk to patients, programs, or the system in general.

**AHS:** Alberta Health Services

**Cluster:** aggregation of similar, relatively uncommon events or diseases in space and/or time in amounts that are believed or perceived to be greater than could be expected by chance.

**Cohorting:** controlling the movement of HCWs and patients for the purpose of limiting an outbreak to a specific unit/floor/area within a larger facility. To meet the criteria for cohorting, HCW and patient activities are confined to the outbreak area for the full duration of the outbreak. The facility must (i) assign dedicated HCWs as required (e.g., night nurses, housekeeping, therapists) that work only in the outbreak area, and (ii) manage all patient activities (e.g., dining, bathing) within the outbreak area, except for specific services that are medically required.

**Close Contact:** any person suspected to have been exposed to an infected person or a contaminated environment to a sufficient degree to have had the opportunity to become infected or colonized with an organism.

**Contact and Droplet Precautions:** see [sign](#) and [information sheet](#) for details.

**Exclusion:** a measure that prevents symptomatic/infected/susceptible HCW from working, until such time that the risk for patients or HCW is low or minimal, as recommended by Public Health, or Workplace Health and Safety or designate.

**Exposure Investigation Number (EI#):** a number assigned by the Alberta Precision Laboratory for Public Health for the purpose of tracking laboratory specimens associated to a specific event (e.g., a potential outbreak) at a specific location and time.

**Gastrointestinal (GI) Illness:** for GI illness case and outbreak definitions refer to [Table 3E](#)

**Healthcare Workers (HCW):** as defined by Alberta Health (AH) includes all individuals at increased risk for exposure to, and/or transmission of, a communicable disease because they work, study, or volunteer in one or more of the following healthcare environments: hospital, nursing home (facility living), supportive living accommodations, or home care setting, mental health facility, community setting, office or clinic of a health practitioner, clinical laboratory.

**Infection Control Professional (ICP):** is a health professional with specialized knowledge responsible for infection prevention and control within the facility or area of practice. ICPs come from several disciplines, including nursing, medicine, microbiology, medical technology and/or epidemiology and may be certified or working toward certification in infection control (CIC®).

**IPC:** Infection Prevention and Control

**Long Term Care (LTC) Facility:** Long term care refers to a continuum of medical and social services designed to support the needs of people living with chronic health problems that require the oversight of a registered nurse 24-hours a day. Long term care services include traditional medical services, social services, and housing. Individuals admitted into long-term care are required to pay accommodation fees (room and board and other costs associated) as set by government. Long term care may be referred to as auxiliary hospitals and nursing homes.

**MOH:** Medical Officer of Health physician appointed as Executive Officer under the Public Health Act with focus on the health of the population, reports the health status of the population, controls and manages infectious and communicable diseases, gives direction to Public Health (including Communicable Disease Control and Safe Healthy Environment) service programs, and to chronic disease and injury prevention

**Medical Officer of Health (MOH) Designate:** Public Health staff designated by the Zone Medical Officer of Health to assist with decision making regarding outbreak management in the Zone. This may also be the Outbreak Response Lead.

**Modified Respiratory Precautions:** see [sign](#) for additional details

**Outbreak:** “The occurrence of cases of disease in excess of what would normally be expected in a defined community, geographical area or season” (World Health Organization, 2018). A common source of infection or the identification of transmission between cases are not required. The epidemiologic features of an outbreak and subsequent public health actions are assessed through the outbreak investigation process.

**Outbreak Management Team (OMT):** a group of key individuals, including but not limited to, representatives from Public Health, Infection Prevention and Control (IPC/ICD), Occupational Health/Workplace Health Safety (WHS), Facility Administration/Facility Management or their Designate who work cooperatively to ensure a timely and coordinated response to a suspect or confirmed outbreak. Composition of the OMT will depend on disease and facility type.

**PPE:** Personal Protective Equipment

**ProvLab:** Alberta Precision Laboratory for Public Health

**Public Health:** for the purpose of this document, Public Health staff refers to Zone Medical Officer of Health / designates within Alberta Health Services. This includes, but is not limited to, Communicable Disease Control (CDC) Nurses and Public Health Inspectors/Safe Healthy Environments (SHE).

**Workplace/Occupational Health and Safety (WHS/OHS):** designated personnel responsible for staff health and safety in facilities. In some facilities, Employee Health or the Site Management or the Site Medical Leader may fill this role. For the purposes of this document, “WHS” is used throughout and includes both WHS and OHS.

## Appendix 2: Antiviral chemoprophylaxis for influenza outbreaks

Alberta Health Services (AHS) supports the National Advisory Committee on Immunization (NACI) recommendations for influenza control published annually in the Canada Communicable Disease Report.

Influenza immunization is the primary strategy for prevention of influenza infection and illness. **Antiviral prophylaxis should not replace annual influenza immunization**; instead, it should be used as an adjunct to immunization during influenza outbreaks. When antiviral prophylaxis is administered simultaneously to all eligible patients and HCW as soon as an outbreak is confirmed, the number of new cases usually decreases quickly.

Both oseltamivir and zanamivir can be used for the prevention of influenza A and B. The mechanism of action of these neuraminidase inhibitors is to prevent release of influenza virus from infected cells. Because of high levels of amantadine resistance in recent years amantadine is not recommended for prophylaxis against influenza; in addition to increasing resistance of influenza A, influenza B is inherently resistant to it. Neither oseltamivir nor zanamivir are effective for prophylaxis in preventing respiratory infections other than influenza (e.g., RSV, Parainfluenza).

**The recommendation to implement antiviral prophylaxis for outbreak management is made by IPC, WHS and/or Public Health.**

### Patients

- During an influenza outbreak, [antiviral prophylaxis](#) is recommended for all at-risk asymptomatic patients **regardless of their influenza immunization status**.
- Each unit/site should develop a process for how antiviral prophylaxis will be ordered for patients.

### Healthcare Workers (HCW)

- Antiviral prophylaxis is also recommended for unimmunized HCWs unless a contraindication is present.
- During outbreaks caused by influenza strains that are not well matched by the vaccine, prophylaxis should also be considered for exposed, asymptomatic HCW regardless of their immunization status.
- HCW who require antiviral prophylaxis should consult with their WHS or Designate, or their own family physician/prescribing pharmacist for prescriptions and monitoring.

### Duration of antiviral prophylaxis:

- The recommended length of antiviral prophylaxis is 10 days.
- If the outbreak continues past 10 days, antiviral prophylaxis should be extended until the outbreak is declared over.
- If the outbreak duration is less than 10 days, antiviral prophylaxis may be discontinued – consult with IPC.
- If cases continue beyond the first 72 hours after initiating prophylaxis, this should be discussed by the OMT (including IPC/WHS/Public Health) promptly for further direction.

### Symptomatic individuals do not require antiviral prophylaxis.

- Use [early treatment](#) with antiviral medication for any patients or HCWs who have had symptoms for less than 48 hours.

- Each attending physician is responsible for prescribing antiviral medication for treatment of individual patients.

Aoki FY *et al.* 2021–2022 AMMI Canada guidance on the use of antiviral drugs for influenza in the COVID-19 pandemic setting in Canada. JAMMI 2022 March;7(1):1-7. doi:[10.3138/jammi-2022-01-31](https://doi.org/10.3138/jammi-2022-01-31).

## Appendix 3: HCW-related outbreak control measures for influenza outbreaks

(Including volunteers, students, physicians, resident physicians)

- HCWs are strongly encouraged to receive an annual dose of seasonal influenza vaccine when available.
- Public Health will advise whether the outbreak influenza strain is covered in the seasonal influenza vaccine. If the outbreak strain is not covered in the seasonal vaccine, Public Health may provide additional direction beyond what is described below.
- Only HCWs who have received the current season's influenza vaccine more than 14 days ago or who are receiving oseltamivir prophylaxis may continue to work on an influenza outbreak unit/area.
  - The affected unit/area should escalate any critical staffing shortage concerns to their Program/Site/Zone leadership.
- Potential exposures may be determined on a case-by-case basis.
- It is the responsibility of an individual who works in more than one facility/unit to inform the alternate facility/unit that an influenza outbreak is in progress in the index facility and determine whether or not they are permitted to work at the alternate facility/unit.

### Management of asymptomatic unimmunized HCWs

Recommendations for work restrictions in relation to immunization status and uptake of chemoprophylaxis by the HCW in order to contain influenza A or B outbreaks will be directed by WHS. Oseltamivir (Tamiflu®) antiviral treatment and prophylaxis is recommended as per the most current Alberta Health Influenza Antiviral Drug Policy. It is the responsibility of the WHS to clearly communicate instructions to staff on how to access antiviral prophylaxis.

- AHS staff may access Insite for **WHS Influenza Outbreak Management** resources under Outbreak Resources for further information.

Asymptomatic HCW on the outbreak unit who have not receive a dose of the current season's vaccine (are considered unimmunized) generally fall into three categories, each subject to work restrictions:

- **Unimmunized** HCW who are asymptomatic at time of assessment **and** who agree to be immunized **but** decline prophylaxis should be:
  - Excluded from work for three (3) days from the last day of work on the outbreak unit/site.
    - If they remain asymptomatic after three (3) days and receive immunization, they may be reassigned to a non-outbreak unit/site for the duration of the outbreak or for fourteen (14) days from date of immunization, whichever occurs first.
    - If reassignment of work is not possible, then the HCW should be excluded from work for fourteen (14) days from the time of immunization or for the duration of the outbreak, whichever occurs first.
- **Asymptomatic** HCW who are not immunized **and** are not taking recommended antiviral prophylaxis should be:
  - Excluded from working in the affected facility/unit(s) until the outbreak is over, **OR**
  - Relocated to a non-outbreak unit/site if they remain asymptomatic after waiting three (3) days from the last day of work on the outbreak unit and should not return to the outbreak unit/site for the duration of the outbreak.
- **Asymptomatic HCW immunized less than fourteen (14) days prior to the outbreak and are not taking recommended antiviral prophylaxis should be:**
  - Excluded from working in the affected unit/facility until 14 days from date of immunization, or for the duration of the outbreak whichever occurs first, **OR**

- Excluded from working at any site for three (3) working days from the last day of work on the outbreak unit. If they remain asymptomatic after waiting the three (3) working days, they can be relocated to a non-outbreak unit until 14 days from the date of immunization or for the duration of the outbreak at the managers' discretion.
- For asymptomatic HCW, no waiting period is required between starting oseltamivir (Tamiflu®) prophylaxis and returning to work.
- HCW oseltamivir (Tamiflu®) prophylaxis is NOT publicly funded. The department/program is responsible for ensuring that affected HCWs are aware about payment processes. Any questions should be directed to Zone WHS.

### **Management of symptomatic HCW**

- If HCW on antiviral prophylaxis develop symptoms, they should stay home and contact WHS or designate for instructions about next steps. (This may ultimately be a referral to their family physician).
  - In addition to WHS, HCW must also contact their manager or supervisor to let them know that they are off work.
- The length of time for which a symptomatic HCW should stay off work will be recommended by WHS / Public Health at the time of the outbreak. Generally, a person with influenza is considered infectious for five (5) days.
- Symptoms such as cough may continue for longer than five (5) days. However, if a HCW is otherwise healthy, he or she is not likely to continue to be infectious after five (5) days following onset of symptoms.



**Appendix 4: COVID-19 patient discharge instructions**



**Patient Discharge Instructions for COVID-19**

**Do NOT PRINT**  
**This is a template only.**  
**Request latest version from IPC.**

Site Name: \_\_\_\_\_

Discharged from Unit: \_\_\_\_\_

Date of Discharge: \_\_\_\_\_

This discharge sheet is for you to understand the actions you need to take when you go home. These instructions are to help protect you and others when going home from your hospital stay.

**What do you have to do?**

	<b>Immunization status</b>	<b>Directions</b>
<input type="checkbox"/>	<b>Any immunization status</b>  and  <b>No COVID-19 exposure</b>	Consider on-site vaccination prior to discharge as needed and if available. (Primary series or additional doses)  Continue to monitor yourself for any new or changed symptoms.
<input type="checkbox"/>	<b>Any immunization status</b>  and  <b>COVID-19 exposure</b>	Monitor for new or changed symptoms until:  <u>DATE DD/MM/YYYY</u> (enter date provided by IPC)  See below and page 2.

Monitor for signs and symptoms of COVID-19:

- fever and/or chills
- new cough or worsening chronic cough
- new or worse shortness of breath or difficulty breathing
- sore throat or pain when swallowing or hoarse voice
- runny nose or stuffy nose or sneezing
- nausea, vomiting, diarrhea or unexplained loss of appetite
- loss or change of smell or taste

If symptoms develop:

- You are recommended to isolate.
- Do a rapid antigen test at home if able.
- See [COVID-19 Info for Albertans – Prevent the Spread](#) for isolation recommendations.

**Additional instructions for patients who had a COVID-19 exposure while in hospital:**

- If you develop new symptoms before the date above (with or without an EI #) then please also call:  
  
UNIT: \_\_\_\_\_ Phone Number: \_\_\_\_\_
- If you need urgent medical attention, call **911** or go to the Emergency Department immediately. Inform them of these instructions and show them this letter.
- **COVID-19 Testing for Symptomatic Individuals**
  - See: [COVID-19 Info for Albertans – Symptoms and testing.](#)
  - Perform a home rapid antigen test if available.
    - **If you test positive for COVID-19:** Call the unit at the number above.
  - Follow the recommended isolation guidance for symptomatic individuals at [COVID-19 Info for Albertans – Prevent the Spread.](#)
- If you have an essential healthcare appointment scheduled before the date indicated on page 1 or while you are self-isolating, please contact that office and inform them of the instructions on this letter. Bring this letter with you to the visit.
- If you had a COVID-19 exposure AND are re-admitted to any health care facility before the date below, please alert the hospital staff by showing them this letter.  
  
DATE DD/MMM/YYYY  
(this should be the same as the date in the box on Page 1)
- If you require additional support please contact Health Link at 811.

## Appendix 5: Outbreak management team meeting agenda

**Outbreak Management Team Meeting**  
**TYPE**  
**UNIT**  
**DATE**  
**TIME**  
**MS Teams**

### AGENDA

- |   |           |
|---|-----------|
| 1. Welcome and Introductions  | Chair     |
| 2. Approval of Agenda   | All       |
| 3. Review Previous Meeting Notes/Actions  | All       |
| 4. Updates  |           |
| 4.1. IPC  |           |
| 4.2. Unit Manager / Charge Nurse  |           |
| 4.3. WHS/OHS  |           |
| 4.4. Bed Management   |           |
| 4.5. Public Health (MOH / Communicable Disease Control / Safe Healthy Environments) |           |
| 5. Patient Movement   | Presenter |
| 6. Round Table  | Presenter |
| 7. (1 <sup>st</sup> meeting only) Meeting Chair                                     | All       |
| 8. Next Steps (Review of “To Dos”)  | Chair     |
| 9. Date of Next Meeting   | Chair     |
| 10. Adjournment   | Chair     |

Attendees: Site Administration, Facility Medical Director, Program Chief, Program Executive Director, Patient Care Manager, Unit Manager, Bed Management / Transition Services, Environmental Services, Allied Health, Infection Prevention and Control (IPC), IPC Site Medical Director, Workplace Health & Safety (WHS) / Occupational Health Safety (OHS), Public Health, others as applicable

[Note: For combined acute care and continuing care sites, OMT must include representation from both settings.]

## Appendix 6: Outbreak checklist for discussion at OMT meeting

### Acute Care Outbreak Initial Considerations Checklist

For combined acute care and continuing care sites, application of acute care outbreak measures to continuing care areas in the same facility will be determined on a case-by-case basis. Considerations include (but are not limited to) physical layout, staffing, and shared spaces and/or activities between patients and residents.

#### Patient Movements (Admissions/Discharges/Transfers):

- Admissions and incoming transfers
  - Open/Closed/Specific criteria
- Outgoing transfers within facility or to another acute care site:
  - Any quarantine/isolation and testing requirements
  - Minimize intra-facility patient transfers off unit – should be medically necessary (i.e., no transfers of convenience)
- Discharges home:
  - Discharge letter with instructions if unit is on outbreak for COVID-19 ([Appendix 4](#))
  - Any quarantine/isolation and testing requirements
- Transfers to congregate living/continuing care:
  - Refer to [Risk Assessment Matrix](#) to determine if [Risk Assessment Worksheet](#) (RAW) and MOH approval is required.
  - Any quarantine/isolation and testing requirements
- Notify IPC of all transfers or discharges for patients on outbreak unit and any identified close contacts on other units

#### Patient Considerations:

- Increase patient symptom monitoring to q8h. (i.e., minimum of 3 times daily)
  - Symptom Identification and Monitoring Form 21616: <https://www.albertahealthservices.ca/frm-21616.pdf>
  - Seniors/altered cognition: <https://www.albertahealthservices.ca/assets/info/ppih/if-ppih-covid-19-recognizing-early-symptoms-in-seniors.pdf>
- Wandering patients
  - <https://www.albertahealthservices.ca/assets/info/ppih/if-ppih-covid-19-care-of-wandering-covid19-patient-acute-care.pdf>
- Additional Precautions/PPE Requirements:
  - Asymptomatic patients: Use Routine Practices
    - For COVID-19 or RI/influenza outbreak: this includes continuous masking and eye protection.
  - Symptomatic patients: Use appropriate Additional Precautions. Private room preferred.

- Testing:
  - Symptomatic patient testing may be directed by most responsible healthcare provider (MRHP) or IPC.
  - If applicable: asymptomatic patient testing (close contacts and unit-wide) is directed by IPC or Public Health.
  - Add Exposure Identification (EI) number to any swabs.
    - If NP swab, mark the requisition (top right corner) and top of NP tube with an X (this is to expedite the results for the test).
- Discontinuation of Additional Precautions
  - IPC should be consulted or notified as per agreed upon site process when discontinuing Additional Precautions for patients on the outbreak unit.
  - For any patient on Modified Respiratory Precautions, complete [Discontinuation of Additional Precautions for Suspected or Confirmed Respiratory Virus Infection Form \(Form 21624\)](#)
- Anti-viral recommendations: Considerations for respiratory illnesses (suspect or confirmed influenza)
  - Suspect/unconfirmed respiratory illness (i.e., before causative organism identified):
    - Hospitalized patients with respiratory symptoms should be empirically treated with oseltamivir for suspected influenza (i.e., treatment dose).
    - Re-assess once laboratory results are available.
  - Confirmed influenza A/B outbreak unit:
    - Prophylaxis for asymptomatic patients
    - Treatment for symptomatic (i.e., empiric) and/or confirmed influenza patients.

**Note:** [COVID-related therapy](#) is usually considered after laboratory confirmation in conjunction with clinical presentation and immunization status (i.e., is not early antiviral treatment).
- Contact tracing (if applicable)
  - IPC is responsible for patient contact tracing.
    - Determine exposure period.
    - Determine if any exposed patients who have been discharged or transferred out require follow-up.
  - IPC and unit to determine if any potential DFSP/visitor close contacts.
- Patient cohorting
  - Yes/No/Any other considerations

### **Unit Outbreak Control Measures:**

(“Unit” can be charge nurse, assistant head nurse, unit manager, patient care manager, or any other individual who has been delegated this responsibility)

- Cleaning and Disinfection:
  - Frequent cleaning of high touch surfaces by unit staff
  - Connect with Environmental Services for enhanced/outbreak cleaning
  - Use only AHS-approved cleaning products.
- Unit/Area Entrances
  - Signage at all entry points
  - Access to ABHR and PPE as applicable at entrance
  - Minimize unnecessary traffic onto unit/into area

- PPE and Supplies:
  - PPE coaches/equivalent [See [Provincial PPE Safety Coach Program](#).]
  - Adequate PPE supplies
  - Adequate supplies for specimen collection
  - Adequate supplies for cleaning and disinfection
- Additional Measures:
  - Leaving the unit
    - Medical appointments
    - Other reasons
  - Communal dining considerations
  - Group activities/therapy considerations
  - Rehabilitation: on unit, in room
  - Nutrition centre: staff access only, cue hand hygiene prior to accessing
  - No shared products
- DFSPs/Visitors:
  - Restrictions
    - Criteria for exceptions as per OMT/site process
  - Communication
  - Log (unit versus room)
  - Preventive measures
    - Self-symptom monitoring
    - Hand hygiene/masking/eye protection

#### WHS Actions and HCW Outbreak Control Measures:

- General measures:
  - Distancing during breaks
  - Hand hygiene
  - Continuous masking
  - No shared foods/drinks (including no potluck or parties)
- HCW PPE:
  - Review PPE requirements (as above)
- Minimize HCW movement
  - Consider cohorting of staff – i.e., single unit or single site requirements.
  - Are there any access restrictions for clinical or support staff during outbreak?
  - Review non-essential staff (volunteers, students etc.) – current placement on unit, alternatives, etc.
  - **For influenza:** Staff working at more than one facility/unit must inform the alternate facility/unit that an influenza outbreak is in progress in the index facility to determine whether or not they are permitted to work at the alternate facility/unit.
- Breaks/break room considerations
  - IPC practices
  - Consider break room log (proactive for contact tracing)
  - Outdoor breaks when warm enough
- Off unit events/gatherings of people (e.g., Connect Care training, BLS training etc.)
  - Review recently occurred events for contact tracing purposes and to assess potential linkages in the transmission chain.

- Upcoming events – no restrictions; re-assess as needed.
- WHS' guidelines for work restrictions as applicable depending on type of outbreak.
  - For influenza A/B outbreaks: immunization and oseltamivir consideration
- HCWs to self-monitor for symptoms while at and away from work.
  - Emphasize messaging for HCWs to not work while symptomatic.
- Consider need for HCW testing (symptomatic +/- asymptomatic)
- Ongoing: HCWs to inform unit manager and/or WHS about any new symptoms and test results (as applicable)
  - a. pending
  - b. negative
  - c. positive
- HCW Contact Tracing (if applicable)
  - Include attending and consulting medical teams, Allied Health, ES and other support staff in addition to unit-based staff.
  - Consider a unit/area HCW log to assist with any ongoing contact tracing efforts.

#### **Communication:**

- IPC/WHS to request EI# from Public Health as per zone process.
- IPC to notify (if not already done)
  - Environmental Services
  - Bed Management/equivalent
  - Workplace Health & Safety
  - Unit/Program/Site Leadership
  - Pharmacy (for influenza outbreaks)
- Establish Outbreak Management Team (OMT).
  - Schedule meetings.
- IPC/SCP/Site Leadership/Communications to send out on-site outbreak memo/email notification.
- Unit/unit manager communication:
  - Unit/unit managers to notify patients and DFSPs.
  - Unit to arrange shift huddles: consider initial and ongoing (as needed).
  - Unit to notify WHS if new symptomatic or positive HCWs.
  - Unit to notify IPC of new symptomatic or positive patients.
- IPC to enter initial outbreak information into provincial IPC outbreak tracking tool and update as needed.
- Communicable Disease Outbreak Daily Report (i.e., REDCap entry or daily line list) to be completed and submitted as per site/zone process.
- SCP to notify Zone Emergency Operations Centre (ZEOC) if ZEOC still standing.
  - If no SCP, then Operational/Site Leadership or IPC to send communication to ZEOC using zone/site process.
  - If Incident Command Structure (ICS) not in place, use site/zone non-ICS communication processes.

## Appendix 7: Outbreak spotlight sign

<https://www.albertahealthservices.ca/assets/healthinfo/ipc/if-hp-ipc-facility-outbreak-stoplight-poster-colour.pdf>

