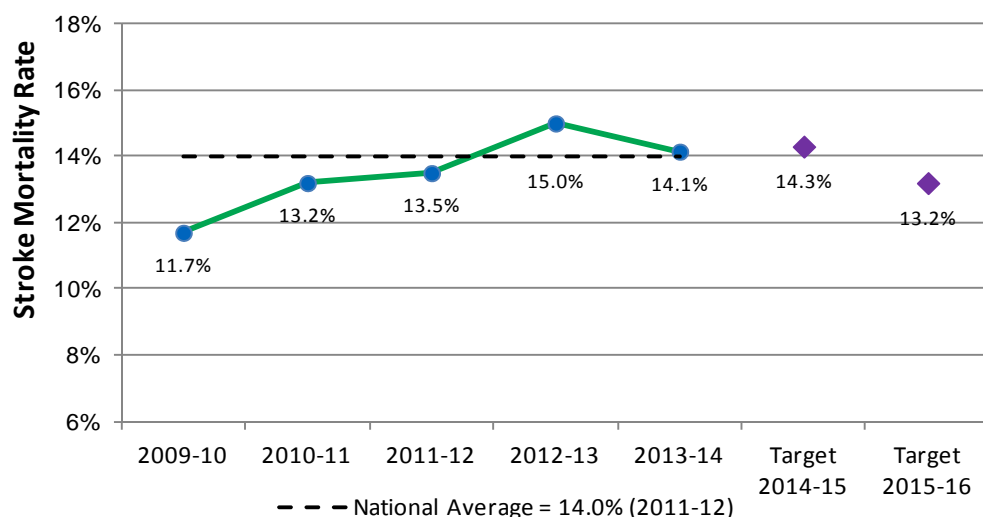


Stroke Mortality – Provincial Details

See below for additional zone / site details where available.

Stroke Mortality Rate



Measure Definition

Stroke Mortality: The probability of dying in hospital within 30 days for patients admitted because of stroke.

This measure represents hospital deaths occurring within 30 days of first admission to a hospital with a diagnosis of stroke. This measure is adjusted for age, sex and other conditions.

Understanding this measure

Stroke is a significant cause of death and disability in the Canadian population. This rate may be influenced by a number of factors, including effectiveness of emergency treatments and quality of care in hospitals.

2014-15 Actions:

- Focus on strategies to reduce door to needle (DTN) times for tPA to ensure stroke patients are treated early, providing the best chance for improvement or cure. When a patient has an ischemic stroke, there's a 4.5-hour window in which treatment will be effective, and the most common treatment is a clot-busting drug called tPA.
- Increase access and flow to Stroke Unit Care through Early Supported Discharge (ESD) and Central Stroke Rehab Coordination.
- Incorporate quality review of Alberta stroke strategy guidelines in the action plan including Stroke Unit Equivalent Care at primary stroke centres.
- Implement the Rural Stroke Action Plan: Stroke Unit Equivalent Care is expected to reduce mortality by 15%.
- Increase access to same-day assessment for high risk TIA (transient ischemic attack) patients.
- Improve turnaround time of Holter Monitor results to rural sites from 2 weeks to 36 hours to facilitate faster access to treatment to prevent strokes.

Stroke Mortality – Zone Details

The probability of dying in hospital within 30 days for patients admitted because of stroke.

Zone	2009-10	2010-11	2011-12	2012-13	2013-14	2014-15 Target	2015-16 Target
Provincial	11.7%	13.2%	13.5%	15.0%	14.1%	14.3%	13.2%
South	15.0%	16.8%	17.0%	19.5%	19.3%	17.8%	14.8%
Calgary	10.1%	11.1%	10.6%	13.8%	13.6%	13.2%	12.3%
Central	12.8%	18.9%	20.0%	16.2%	12.5%	15.5%	14.3%
Edmonton	11.0%	12.2%	14.0%	15.0%	13.3%	14.4%	13.3%
North	19.4%	18.6%	13.5%	16.2%	19.2%	15.6%	14.5%

Stroke Mortality –Site Details

The probability of dying in hospital within 30 days for patients admitted because of stroke.

Stroke Mortality	2009-10	2010-11	2011-12	2012-13	2013-14	2014-15 Target	2015-16 Target
Provincial	11.7%	13.2%	13.5%	15.0%	14.1%	14.3%	13.2%
South Zone Total	15.0%	16.8%	17.0%	19.5%	19.3%	17.8%	14.8%
Chinook Regional Hospital	17.6%	16.1%	21.3%	19.6%	22.2%	17.8%	14.4%
Medicine Hat Regional Hospital	14.7%	14.6%	15.0%	13.5%	11.4%	13.3%	13.0%
All Other Hospitals	n/a	n/a	n/a	n/a	n/a	n/a	n/a
Calgary Zone Total	10.1%	11.1%	10.6%	13.8%	13.6%	13.2%	12.3%
Alberta Children's Hospital	Measure restricted to Adult Sites only						
Foothills Medical Centre	9.4%	10.4%	9.9%	13.4%	13.0%	13.3%	13.0%
Peter Lougheed Centre	n/a	n/a	n/a	n/a	n/a	n/a	n/a
Rockyview General Hospital	11.9%	12.0%	15.6%	12.0%	n/a	11.9%	11.7%
South Health Campus	Opened February 2013				n/a	13.2%	12.3%
All Other Hospitals	n/a	n/a	n/a	n/a	n/a	n/a	n/a
Central Zone Total	12.8%	18.9%	20.0%	16.2%	12.5%	15.5%	14.3%
Red Deer Regional Hospital Centre	11.9%	18.6%	17.5%	18.5%	12.2%	17.0%	14.4%
All Other Hospitals	13.4%	19.2%	22.2%	14.2%	12.9%	13.9%	13.3%
Edmonton Zone Total	11.0%	12.2%	14.0%	15.0%	13.3%	14.4%	13.3%
Grey Nuns Community Hospital	8.6%	10.2%	12.5%	12.3%	8.9%	12.2%	12.0%
Misericordia Community Hospital	9.5%	11.3%	12.9%	11.3%	12.5%	11.2%	11.0%
Royal Alexandra Hospital	7.5%	12.9%	15.4%	13.4%	16.7%	13.2%	13.0%
Stollery Children's Hospital	Measure restricted to Adult Sites only						
Sturgeon Community Hospital	n/a	n/a	n/a	n/a	n/a	n/a	n/a
University of Alberta Hospital	13.4%	12.9%	13.8%	15.4%	13.6%	14.8%	13.8%
All Other Hospitals	n/a	n/a	n/a	n/a	n/a	n/a	n/a
North Zone Total	19.4%	18.6%	13.5%	16.2%	19.2%	15.6%	14.5%
Northern Lights Regional Health Centre	n/a	n/a	n/a	n/a	n/a	n/a	n/a
Queen Elizabeth II Hospital	21.0%	18.0%	20.4%	22.3%	23.6%	19.7%	15.0%
All Other Hospitals	19.6%	21.6%	11.9%	14.0%	18.4%	13.7%	13.3%

Note: n/a indicates statistically unreliable rates due to low numbers.