

Continuing Care Placement

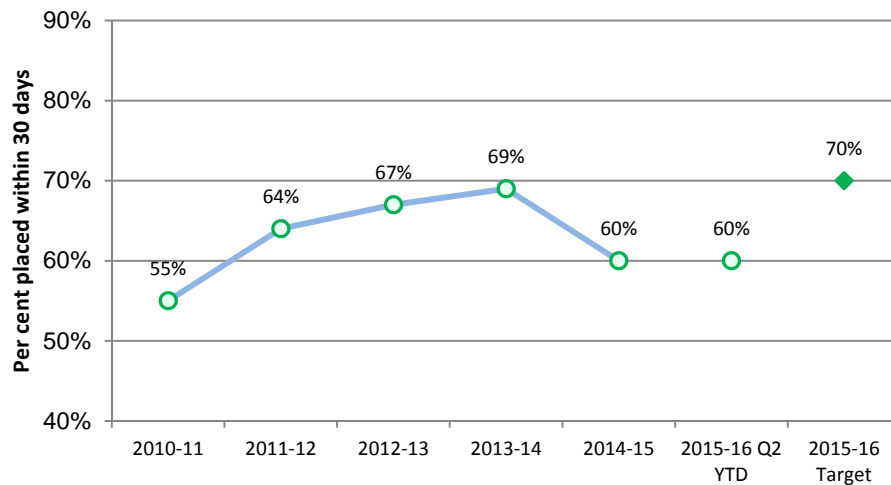
Measure Definition

The percentage of clients admitted to a continuing care space (supportive living or long-term care) within 30 days of the date they are assessed and approved for placement. This includes patients/clients assessed and approved and waiting in hospital or community.

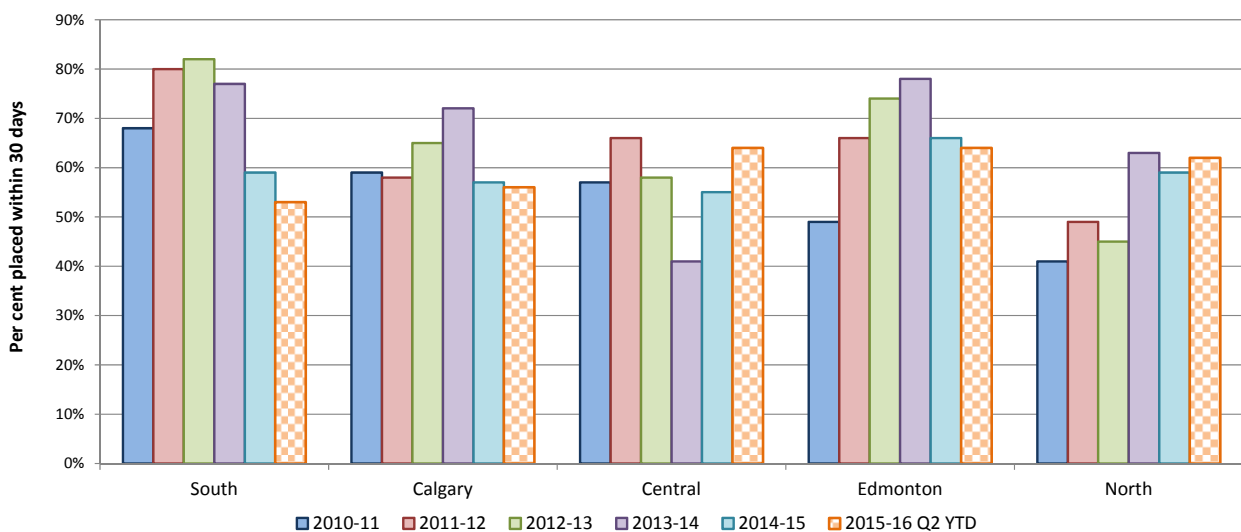
Understanding this Measure

Providing appropriate care for our aging population is extremely important to Albertans. Timely access to continuing care (supportive living or long-term care) ensures higher quality of life for our seniors. In addition, by improving access to continuing care, AHS is able to improve flow throughout the system, provide more appropriate care, decrease wait times and deliver care in a more cost effective manner.

Continuing Care Placement within 30 days - Annual



Continuing Care Placement within 30 days - By Zone



Continuing Care Placement – Actions

Provincial/ Strategic Clinical Network (SCN)	<ul style="list-style-type: none"> • In Q2 year-to-date 2015-16, AHS opened 594 net new continuing care spaces. • The number of people waiting in acute care/sub-acute and community for continuing care placement has increased by 84 individuals from last Q2 2014/15 (n=1,526) to Q2 2015/16 (n=1,610). • Work continues across the province to implement the Seniors Health Continuing Care Capacity Plan. • Completed new “Access to Designated Living Option” (ADLO) which replaced the previous First Available Living Option policy in May 2015. • Over a six-month period, the continuing care resolution team consulted with more than 1,000 Albertans, identifying opportunities that contribute to further improvements in Alberta’s continuing care system.
South	<ul style="list-style-type: none"> • In Q2 year-to-date 2015-16, opened 50 net new continuing care spaces. • Implementation of Seniors Health Continuing Care Capacity Plan.
Calgary	<ul style="list-style-type: none"> • In Q2 year-to-date 2015-16, opened 439 net new continuing care spaces. • Implementation of Seniors Health Continuing Care Capacity Plan.
Central	<ul style="list-style-type: none"> • In Q2 year-to-date 2015-16, opened 14 net new continuing care spaces. • Process improvements in Continuing Care Placement Office implemented. • Working with provincial CPSM/Seniors Health and community partners on cognitive behavioural adult specialty beds in Rosehaven (Camrose) for short and long term support.
Edmonton	<ul style="list-style-type: none"> • In Q2 year-to-date 2015-16, opened 46 net new continuing care spaces in Supportive Living 4 and Supportive Living 4-Dementia. • Development of a program to support long-term care residents with chronic/complex respiratory issues is underway. • Support for clients with bi-level ventilation (BPAP) needs is underway. BPAP has been shown to be an effective management tool for chronic obstructive pulmonary disease and acute and chronic respiratory failure.
North	<ul style="list-style-type: none"> • In Q2 year-to-date 2015-16, opened 45 net new continuing care spaces. • Wait-listing reporting currently being modified to capture the new policy for Access to a Designated Living Option. • Meditech systems updated to waitlist patients according to new policies. • Developed information and decision making guide for clients accessing a designated living option from community and acute care.

IN SUMMARY

Overall, provincial and zone results have not improved. However, AHS has placed more clients in continuing care living options in Q2 this year (1,890) as compared to Q2 last year (1,819).

Since April 2010, as of September 30, 2015, AHS has added approximately 4,844 spaces to the continuing care system, and more spaces will continue to be added in the coming years.

In addition to opening continuing care spaces, AHS is expanding home care services. This allows more seniors to remain safe and independent in their own homes, which is where they want to be.

Hundreds of adult day program spaces are also being added to monitor seniors living at home with complex and unstable health conditions, to give seniors additional opportunities for socializing, and to provide respite for caregivers.

Continuing Care Placement – Zone Details

The percentage of clients admitted to a continuing care space (supportive living or long-term care) within 30 days of the date they are assessed and approved for placement. This includes patients assessed and approved and waiting in hospital or community.

Continuing Care Clients Placed within 30 days	2012-13	2013-14	2014-15	Q2 YTD		Trend *	2015-16 Target
				2014-15 Last Year	2015-16 Current		
Provincial	67%	69%	60%	64%	60%	↓	70%
South Zone	82%	77%	59%	70%	53%	↓	83%
Calgary Zone	65%	72%	57%	58%	56%	↓	68%
Central Zone	58%	41%	55%	54%	64%	↑	63%
Edmonton Zone	74%	78%	66%	74%	64%	↓	75%
North Zone	45%	63%	59%	64%	62%	↓	53%

*Trend: ↑ Improvement → Stability ↓ Area requires additional focus

Total Placed	2012-13	2013-14	2014-15	Q2 YTD	
				2014-15 Last Year	2015-16 Current
Provincial	7,761	7,694	7,810	3,718	3,813
South Zone	930	868	866	435	417
Calgary Zone	2,301	2,164	2,548	1,129	1,287
Central Zone	1,281	1,189	1,259	626	574
Edmonton Zone	2,620	2,742	2,443	1,188	1,215
North Zone	629	731	694	340	320