

## Surgical Readmissions

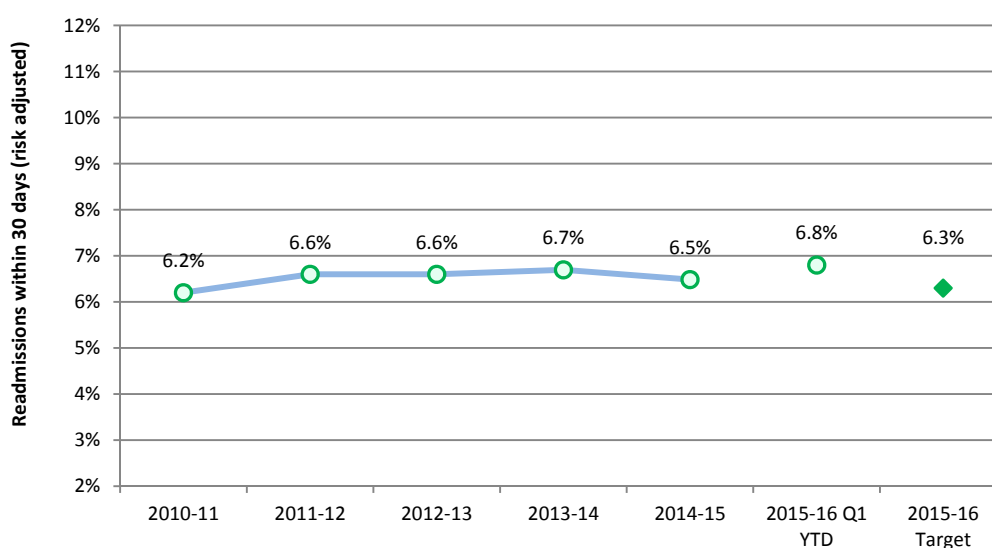
### Measure Definition

The percentage of surgical patients with unplanned readmission to hospital within 30 days of leaving the hospital. Excludes surgical patients who require scheduled follow up care.

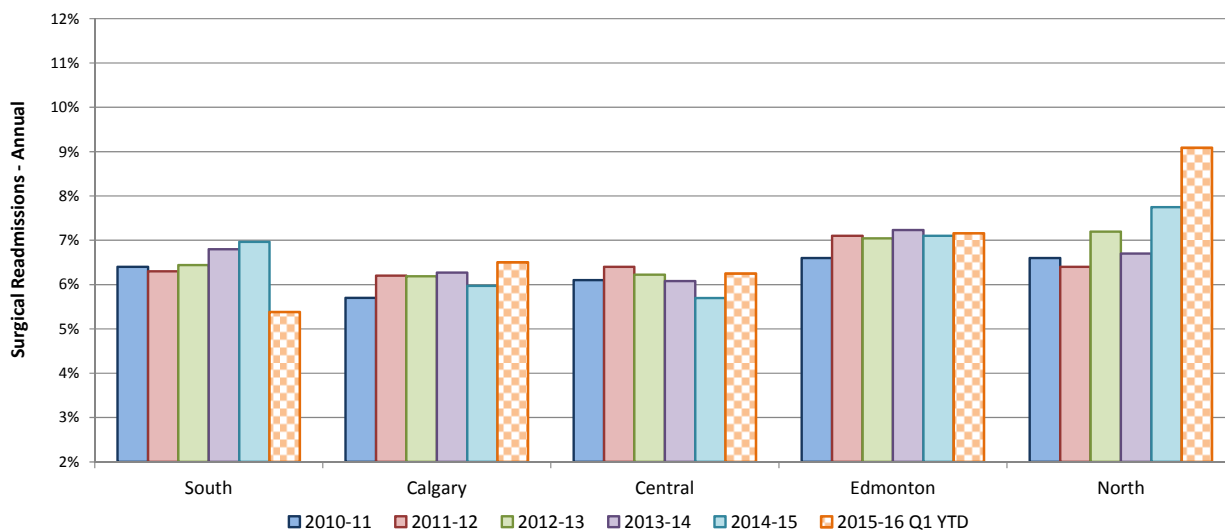
### Understanding this Measure

Unplanned readmissions to hospitals are used to measure quality of surgical care and follow-up. Readmission rates are also influenced by a variety of other factors, including the effectiveness of the care transition to the community.

### Surgical Readmissions - Annual



### Surgical Readmissions - by Zone



## Surgical Readmissions – Actions

<b>Provincial/ Strategic Clinical Network (SCN)</b>	<ul style="list-style-type: none"> <li>Continue Enhanced Recovery After Surgery (ERAS) project at six early adopter sites through the Surgery SCN.</li> <li>Business case developed for spread of ERAS protocols to other centers in Alberta.</li> <li>National Surgery Quality Improvement Project (NSQIP) underway in five sites across Alberta. This program is supported by the Surgery SCN.</li> <li>Sustain, spread and optimize Adult Coding Access Targets for Surgery (aCATS). This program is supported by the Surgery SCN.</li> </ul>
<b>South</b>	<ul style="list-style-type: none"> <li>Implementation of NSQIP/ TQIP to improve surgical and trauma care.</li> <li>Preliminary work on aCATs is underway with some targeted areas receiving introductory education and support.</li> </ul>
<b>Calgary</b>	<ul style="list-style-type: none"> <li>Continue working with the SCNs to develop and implement Head and Neck Surgical pathways to decrease length of stay.</li> <li>Implement ERAS for colorectal surgery at Peter Lougheed Centre and Foothills Medical Centre.</li> <li>Utilizing aCATS data to prioritize vascular and oncology surgery access across all specialties.</li> <li>Tracking Surgical Site infections for vascular surgeries.</li> <li>Implementing NSQIP pilot project at Rockyview General Hospital.</li> </ul>
<b>Central</b>	<ul style="list-style-type: none"> <li>Participating in NSQIP to improve surgical outcomes by analyzing patient data to change practice at Red Deer Regional Hospital.</li> <li>All surgical specialties providing aCATS data. OR utilization is being reviewed to determine options to increase the number of surgeries to meet target of 3 weeks wait.</li> </ul>
<b>Edmonton</b>	<ul style="list-style-type: none"> <li>Optimization of aCATS application for waitlist management is ongoing. Engagement of surgeons and utilization of aCATS tool for waitlist management is ongoing, including sharing and reviewing of data.</li> <li>Implemented a pilot project for the “elder friendly” emergency surgical unit at the University of Alberta Hospital – a study called Elder-friendly Approaches to the Surgical Environment (EASE).</li> <li>Implemented restorative care activities for fractured hip patients to support improved readiness for discharge.</li> </ul>
<b>North</b>	<ul style="list-style-type: none"> <li>Contribute to Surgery SCN to develop a provincial surgical service planning framework to guide surgical planning and decision making.</li> <li>Continuing to monitor safe surgery checklist compliance.</li> </ul>

### IN SUMMARY

Compared to the same period last year, provincial and two zones have demonstrated improvement.

AHS is committed to working with its Strategic Clinical Networks to ensure quality of surgical care and follow-up. Reducing the frequency with which patients return to the hospital can both improve care and lower costs. Some of the key reasons that bring surgical patients back to the hospital soon after discharge may be due to poor social support at home, inability to access primary care, or general poor health.

### DID YOU KNOW

***National Surgery Quality Improvement Project (NSQIP)** uses clinical data to measure and improve performance thereby reducing the rate of preventable surgical complications. **Trauma Quality Improvement Program (TQIP)** works to enhance the quality of care for trauma patients.*

***Adult Coding Access Targets for Surgery (aCATS)** helps deliver exceptional surgical care in a safe and timely manner. It is a standardized diagnosis-based system to help prioritize surgeries offered throughout the province.*

***Elder-friendly Approaches to the Surgical Environment (EASE)** is a new clinical research study – a collaboration between AHS and the Faculty of Medicine & Dentistry at the University of Alberta – that aims to implement elder-friendly practices during and after surgery to better support older patient through their hospital stay, thereby improving post-operative outcomes.*

## Surgical Readmissions – Zone and Site Details

The percentage of surgical patients with unplanned readmission to hospital within 30 days of leaving the hospital. Excludes surgical patients who require scheduled follow up care.

Surgical Readmissions within 30 days (Risk Adjusted)	2012-13	2013-14	2014-15	Q1 YTD		Trend *	2015-16 Target
				2014-15 Last Year	2015-16 Current		
<b>Provincial</b>	<b>6.6%</b>	<b>6.7%</b>	<b>6.5%</b>	<b>6.9%</b>	<b>6.8%</b>	<b>↑</b>	<b>6.3%</b>
<b>South Zone Total</b>	<b>6.4%</b>	<b>6.8%</b>	<b>6.7%</b>	<b>6.9%</b>	<b>5.4%</b>	<b>↑</b>	<b>6.2%</b>
Chinook Regional Hospital	6.9%	6.7%	7.8%	8.7%	4.9%	↑	6.7%
Medicine Hat Regional Hospital	5.5%	7.2%	5.1%	4.0%	6.1%	↓	5.4%
All Other Hospitals	7.8%	4.9%	5.9%	4.4%	N/A	N/A	7.3%
<b>Calgary Zone Total</b>	<b>6.2%</b>	<b>6.3%</b>	<b>6.0%</b>	<b>6.2%</b>	<b>6.5%</b>	<b>↓</b>	<b>6.1%</b>
Foothills Medical Centre	6.6%	6.8%	6.1%	6.6%	6.9%	↓	6.4%
Peter Lougheed Centre	6.0%	5.6%	6.0%	5.6%	6.1%	↓	5.9%
Rockyview General Hospital	6.2%	6.2%	6.2%	6.3%	6.4%	↓	6.1%
South Health Campus	Opened Feb 2013	6.8%	5.9%	6.3%	7.4%	↓	6.1%
All Other Hospitals	1.4%	2.5%	1.6%	2.1%	1.1%	↑	1.7%
<b>Central Zone Total</b>	<b>6.2%</b>	<b>6.1%</b>	<b>5.6%</b>	<b>5.3%</b>	<b>6.2%</b>	<b>↓</b>	<b>6.1%</b>
Red Deer Regional Hospital Centre	6.1%	6.1%	5.9%	5.4%	6.2%	↓	6.1%
All Other Hospitals	6.6%	6.0%	4.6%	5.3%	6.4%	↓	6.0%
<b>Edmonton Zone Total</b>	<b>7.0%</b>	<b>7.2%</b>	<b>7.0%</b>	<b>7.7%</b>	<b>7.2%</b>	<b>↑</b>	<b>6.5%</b>
Grey Nuns Community Hospital	6.5%	5.9%	5.8%	5.9%	7.2%	↓	6.2%
Misericordia Community Hospital	6.2%	6.9%	7.2%	7.2%	5.8%	↑	6.0%
Royal Alexandra Hospital	7.5%	7.5%	7.0%	7.8%	6.9%	↑	7.0%
Sturgeon Community Hospital	5.0%	5.5%	5.9%	6.1%	7.1%	↓	5.0%
University of Alberta Hospital	7.7%	8.2%	7.7%	8.9%	8.3%	↑	7.1%
All Other Hospitals	4.7%	4.1%	4.7%	6.5%	5.4%	↑	4.5%
<b>North Zone Total</b>	<b>7.2%</b>	<b>6.7%</b>	<b>7.5%</b>	<b>8.6%</b>	<b>9.1%</b>	<b>↓</b>	<b>6.7%</b>
Northern Lights Regional Health Centre	8.3%	6.5%	7.5%	6.3%	5.3%	↑	7.6%
Queen Elizabeth II Hospital	6.8%	7.2%	7.8%	9.3%	10.4%	↓	6.6%
All Other Hospitals	7.0%	6.0%	7.0%	8.5%	8.7%	↓	6.8%

N/A indicates statistically unreliable rates due to low volumes

\*Trend: ↑ Improvement → Stability ↓ Area requires additional focus

Eligible Surgical Cases (Index)*	2012-13	2013-14	2014-15	Q1 YTD	
				2014-15 Last Year	2015-16 Current
<b>Provincial</b>	<b>89,090</b>	<b>90,811</b>	<b>92,530</b>	<b>24,150</b>	<b>23,999</b>
South Zone	5,522	5,471	5,432	1,447	1,415
Calgary Zone	35,301	36,315	37,846	9,843	10,010
Central Zone	7,640	7,784	7,859	1,976	2,070
Edmonton Zone	35,774	36,295	36,672	9,636	9,306
North Zone	4,853	4,946	4,721	1,248	1,198

\*Total number of hospital stays for surgery for eligible conditions. Transfers are excluded.