

## Continuing Care Placement

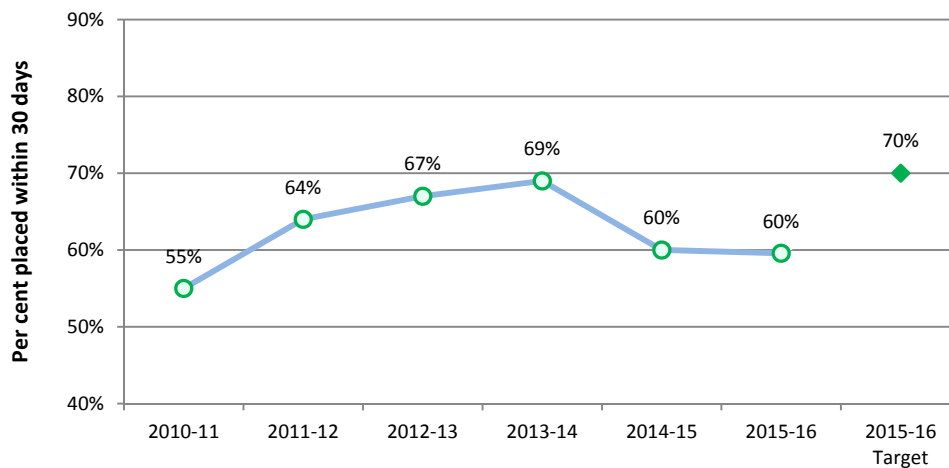
### Measure Definition

The percentage of clients admitted to a continuing care space (designated supportive living or long-term care) within 30 days of the date they are assessed and approved for placement. This includes patients/clients assessed and approved and waiting in hospital or community.

### Understanding this Measure

Providing appropriate care for our aging population is extremely important to Albertans. Timely access to continuing care (designated supportive living or long-term care) ensures higher quality of life for our seniors. In addition, by improving access to continuing care, AHS is able to improve flow throughout the system, provide more appropriate care, decrease wait times and deliver care in a more cost effective manner.

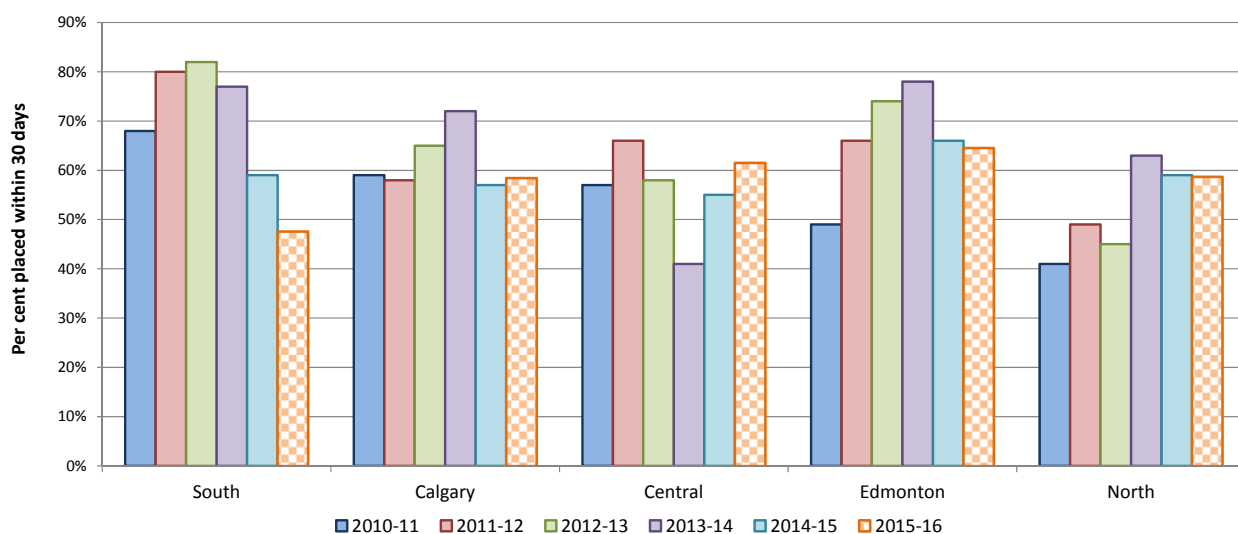
Continuing Care Placement within 30 days - Annual



### How Do We Compare?

Comparable national data is not available for this measure.

Continuing Care Placement within 30 days - By Zone



## Continuing Care Placement – Actions

<b>Provincial/ Strategic Clinical Network (SCN)</b>	<ul style="list-style-type: none"> <li>In 2015-16, AHS opened 997 continuing care spaces for a total of 25,135 community-based services. These include 717 supportive living beds, 203 long-term care beds, 42 restorative care beds, and 35 community palliative beds.</li> <li>The number of people waiting in acute care/sub-acute and community for continuing care placement has decreased by 133 individuals from 2014-15 (n=1,544) to 2015-16 (n=1,411).</li> <li>Work continues across the province to implement the Seniors Health Continuing Care Capacity Plan. Significant work has been done to date to achieve an increase of 2,000 long-term and dementia care beds within the next four years.</li> </ul>
<b>South</b>	<ul style="list-style-type: none"> <li>In 2015-16, opened 111 net new continuing care spaces.</li> <li>Implementation of Seniors Health Continuing Care Capacity Plan.</li> </ul>
<b>Calgary</b>	<ul style="list-style-type: none"> <li>In 2015-16, opened 667 net new continuing care spaces.</li> <li>Implementation of Seniors Health Continuing Care Capacity Plan.</li> </ul>
<b>Central</b>	<ul style="list-style-type: none"> <li>In 2015-16, opened 18 net new continuing care spaces.</li> <li>A process improvement implementation of Meditech statistical tracking was accomplished at the placement office.</li> <li>Planning is underway to address gaps for clients with complex dementia and/or behavioral issues.</li> </ul>
<b>Edmonton</b>	<ul style="list-style-type: none"> <li>In 2015-16, opened 156 net new continuing care spaces in Supportive Living 4 and Supportive Living 4-Dementia.</li> </ul>
<b>North</b>	<ul style="list-style-type: none"> <li>In 2015-16, opened 45 net new continuing care spaces.</li> <li>The continuing care placement team was centralized and continues to reviews processes to establish consistent practice across the zone.</li> </ul>

### IN SUMMARY

Provincial results have remained stable since last year. Two zones have improved compared to results from last year.

AHS has placed more clients in continuing care living options in 2015-16 (7,879) as compared to 2014-15 (7,810).

Since April 2010, as of March 31, 2016, AHS has added 5,247 spaces to the continuing care system, and more spaces will continue to be added in the coming years.

In addition to opening continuing care spaces, AHS is expanding home care services. This allows more seniors to remain safe and independent in their own homes, which is where they want to be.

AHS is working to ensure beds in acute care are used in the most efficient manner, improving communication between all health care team members, patients and families to facilitate discharges and ensure that patients are getting the best care for their personal situations.

### DID YOU KNOW

*Hundreds of adult day program spaces are also being added to monitor seniors living at home with complex and unstable health conditions, to give seniors additional opportunities for socializing, and to provide respite for caregivers.*

## Continuing Care Placement – Zone Details

The percentage of clients admitted to a continuing care space (supportive living or long-term care) within 30 days of the date they are assessed and approved for placement. This includes patients assessed and approved and waiting in hospital or community.

Continuing Care Clients Placed within 30 days	2012-13	2013-14	2014-15	Q4 YTD		Trend *	2015-16 Target
				2014-15 Last Year	2015-16 Current		
<b>Provincial</b>	<b>67%</b>	<b>69%</b>	<b>60%</b>	<b>60%</b>	<b>60%</b>	→	<b>70%</b>
South Zone	82%	77%	59%	59%	48%	↓	83%
Calgary Zone	65%	72%	57%	57%	58%	↑	68%
Central Zone	58%	41%	55%	55%	62%	↑	63%
Edmonton Zone	74%	78%	66%	66%	65%	↓	75%
North Zone	45%	63%	59%	59%	59%	→	53%

\*Trend: ↑ Improvement → Stability ↓ Area requires additional focus

Total Placed	2012-13	2013-14	2014-15	Q4 YTD	
				2014-15 Last Year	2015-16 Current
<b>Provincial</b>	<b>7,761</b>	<b>7,693</b>	<b>7,810</b>	<b>7,810</b>	<b>7,879</b>
South Zone	930	868	866	866	887
Calgary Zone	2,301	2,164	2,548	2,548	2,722
Central Zone	1,281	1,189	1,259	1,259	1,060
Edmonton Zone	2,620	2,742	2,443	2,443	2,506
North Zone	629	730	694	694	704