

## Surgical Readmissions

### Measure Definition

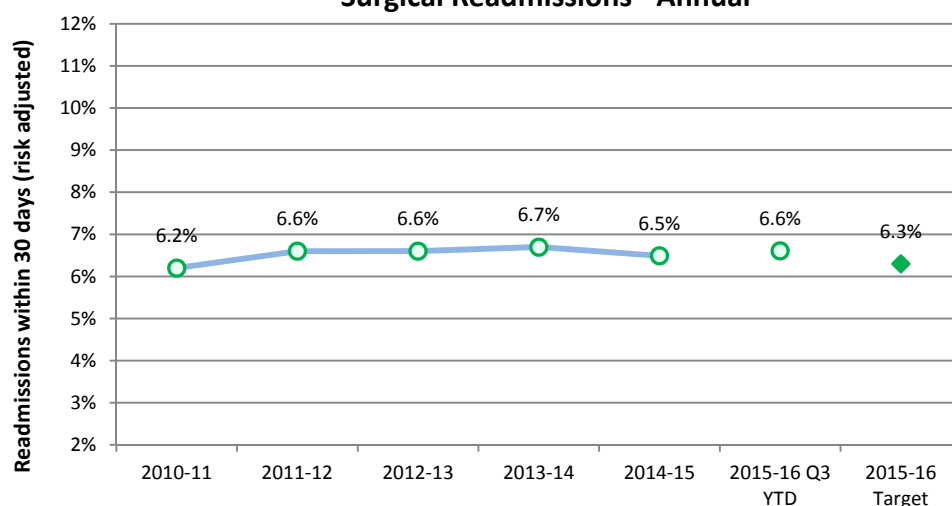
The percentage of surgical patients with unplanned readmission to hospital within 30 days of leaving the hospital. Excludes surgical patients who require scheduled follow up care.

### Understanding this Measure

Unplanned readmissions to hospitals are used to measure quality of surgical care and follow-up. Readmission rates are also influenced by a variety of other factors, including the effectiveness of the care transition to the community.

NOTE: This measure relies on patient follow up after a patient's original discharge date for a period up to 90 days. Therefore reporting results reflect patients discharged in an earlier time period (i.e., Q3 YTD).

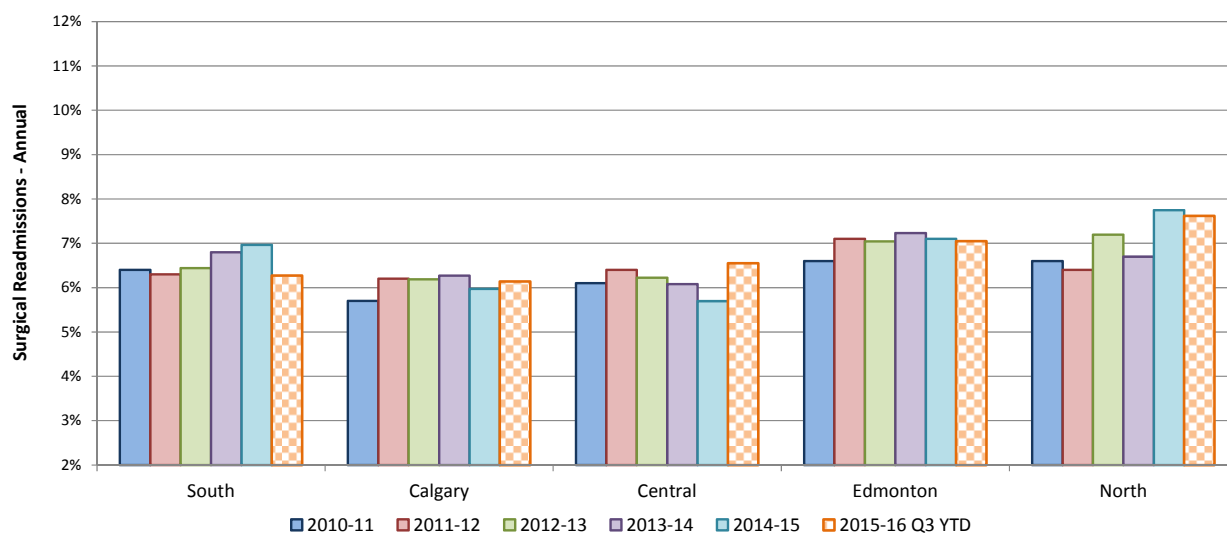
### Surgical Readmissions - Annual



### How Do We Compare?

Alberta ranked 5<sup>th</sup> best nationally out of ten provinces and the same as the national rate.

### Surgical Readmissions - by Zone



## Surgical Readmissions – Actions

<b>Provincial/ Strategic Clinical Network (SCN)</b>	<ul style="list-style-type: none"> <li>• Business case approved for spread of Enhanced Recovery After Surgery (ERAS) protocols to three other centers in Alberta and 10 more pathways. Compliance with the protocol has increased at all sites from 63 per cent in 2014-15 to 73 per cent in 2015-16. ERAS protocol for colorectal surgeries were implemented in six sites in Calgary and Edmonton.</li> <li>• National Surgery Quality Improvement Project (NSQIP) underway in five sites across Alberta. This program is supported by the Surgery SCN.</li> <li>• Sustain, spread and optimize Adult Coding Access Targets for Surgery (aCATS). This program is also supported by the Surgery SCN.</li> </ul>
<b>South</b>	<ul style="list-style-type: none"> <li>• Implementation of NSQIP to improve surgical and trauma care by using clinical data to understand performance.</li> <li>• Preliminary work on aCATs is underway with some targeted areas receiving introductory education and support.</li> </ul>
<b>Calgary</b>	<ul style="list-style-type: none"> <li>• ERAS pathway implemented for colorectal surgery at Peter Lougheed Centre and Foothills Medical Centre (FMC).</li> <li>• Implementation of NSQIP pilot project at Rockyview General Hospital is underway.</li> <li>• Data collection for Trauma Quality Improvement Program (TQIP) at FMC has started with the first report due in June 2016.</li> <li>• Head and Neck surgical pathway was implemented at FMC to reduce length of stay, including intensive care unit high observation guidelines.</li> </ul>
<b>Central</b>	<ul style="list-style-type: none"> <li>• Red Deer Regional Hospital Centre (RDRHC) NSQIP team developed a dashboard highlighting surgical care for quality initiatives. The team is focusing on venous thromboembolism prophylaxis, pain management, early removal of Foley catheters and transfusion rates.</li> <li>• Safe Surgical Checklist for surgical sites continues to have an overall compliance rate of greater than 95%.</li> <li>• aCATS has been implemented in all surgical sites.</li> <li>• Standardized order sets for specific surgical procedures have been developed with new ones being initiated.</li> </ul>
<b>Edmonton</b>	<ul style="list-style-type: none"> <li>• Engagement of surgeons and utilization of aCATS tool for waitlist management is ongoing, including sharing and reviewing of data.</li> <li>• Implemented restorative care activities for fractured hip patients to support improved readiness for discharge.</li> <li>• Implemented a new process for moving hip patients to surgical site when identified as surgical to reduce length of time to the operating room.</li> </ul>
<b>North</b>	<ul style="list-style-type: none"> <li>• Continuing to monitor safe surgery checklist compliance.</li> <li>• Surgical chart audits ongoing to identify root cause of readmissions.</li> </ul>

### IN SUMMARY

The Q3 provincial results have shown deterioration from last year. Three zones remained stable or showed an improvement from last year.

AHS is committed to working with its Strategic Clinical Networks to ensure quality of surgical care and follow-up. Reducing the frequency with which patients return to the hospital can both improve care and lower costs.

### DID YOU KNOW

**National Surgery Quality Improvement Project (NSQIP)** uses clinical data to measure and improve performance thereby reducing the rate of preventable surgical complications. **Trauma Quality Improvement Program (TQIP)** works to enhance the quality of care for trauma patients.

**Adult Coding Access Targets for Surgery (aCATS)** helps deliver exceptional surgical care in a safe and timely manner. It is a standardized diagnosis-based system to help prioritize surgeries offered throughout the province.

**Enhanced Recovery After Surgery (ERAS)** helps patients get back to normal as quickly as possible by providing new and consistent ways of managing care before, during and after surgery.

## Surgical Readmissions – Zone and Site Details

The percentage of surgical patients with unplanned readmission to hospital within 30 days of leaving the hospital. Excludes surgical patients who require scheduled follow up care.

Surgical Readmissions within 30 days (Risk Adjusted)	2012-13	2013-14	2014-15	Q3 YTD		Trend *	2015-16 Target
				2014-15 Last Year	2015-16 Current		
<b>Provincial</b>	<b>6.6%</b>	<b>6.7%</b>	<b>6.5%</b>	<b>6.5%</b>	<b>6.6%</b>	↓	<b>6.3%</b>
<b>South Zone Total</b>	<b>6.4%</b>	<b>6.8%</b>	<b>6.8%</b>	<b>7.0%</b>	<b>6.3%</b>	↑	<b>6.2%</b>
Chinook Regional Hospital	6.9%	6.7%	7.8%	8.2%	5.9%	↑	6.7%
Medicine Hat Regional Hospital	5.5%	7.2%	5.1%	5.0%	6.8%	↓	5.4%
All Other Hospitals	7.8%	4.9%	5.9%	6.9%	8.7%	↓	7.3%
<b>Calgary Zone Total</b>	<b>6.2%</b>	<b>6.3%</b>	<b>6.0%</b>	<b>6.0%</b>	<b>6.1%</b>	↓	<b>6.1%</b>
Foothills Medical Centre	6.6%	6.8%	6.1%	6.1%	6.4%	↓	6.4%
Peter Lougheed Centre	6.0%	5.6%	6.0%	5.9%	6.2%	↓	5.9%
Rockyview General Hospital	6.2%	6.2%	6.2%	6.1%	5.9%	↑	6.1%
South Health Campus	N/A	6.8%	5.9%	6.1%	6.5%	↓	6.1%
All Other Hospitals	1.4%	2.5%	1.6%	2.1%	1.8%	↑	1.7%
<b>Central Zone Total</b>	<b>6.2%</b>	<b>6.1%</b>	<b>5.6%</b>	<b>5.7%</b>	<b>6.6%</b>	↓	<b>6.1%</b>
Red Deer Regional Hospital Centre	6.1%	6.1%	5.9%	5.9%	6.7%	↓	6.0%
All Other Hospitals	6.6%	6.0%	4.6%	5.0%	6.1%	↓	6.4%
<b>Edmonton Zone Total</b>	<b>7.0%</b>	<b>7.2%</b>	<b>7.0%</b>	<b>7.1%</b>	<b>7.1%</b>	→	<b>6.5%</b>
Grey Nuns Community Hospital	6.5%	5.9%	5.8%	6.0%	6.6%	↓	6.2%
Misericordia Community Hospital	6.2%	6.9%	7.3%	7.1%	6.5%	↑	6.0%
Royal Alexandra Hospital	7.5%	7.5%	7.0%	7.2%	6.9%	↑	7.0%
Sturgeon Community Hospital	5.0%	5.5%	5.9%	6.1%	5.9%	↑	5.0%
University of Alberta Hospital	7.7%	8.2%	7.7%	7.7%	8.0%	↓	7.1%
All Other Hospitals	4.7%	4.1%	4.7%	5.7%	4.8%	↑	4.5%
<b>North Zone Total</b>	<b>7.2%</b>	<b>6.7%</b>	<b>7.5%</b>	<b>7.7%</b>	<b>7.6%</b>	↑	<b>6.7%</b>
Northern Lights Regional Health Centre	8.3%	6.5%	7.6%	7.9%	7.0%	↑	7.6%
Queen Elizabeth II Hospital	6.8%	7.2%	7.8%	8.0%	7.9%	↑	6.6%
All Other Hospitals	7.0%	6.0%	7.0%	7.2%	7.6%	↓	6.8%

N/A indicates statistically unreliable rates due to low volumes

\*Trend: ↑ Improvement → Stability ↓ Area requires additional focus

Eligible Surgical Cases (Index)*	2012-13	2013-14	2014-15	Q3 YTD	
				2014-15 Last Year	2015-16 Current
<b>Provincial</b>	<b>89,090</b>	<b>90,811</b>	<b>92,530</b>	<b>69,189</b>	<b>69,557</b>
South Zone	5,522	5,471	5,432	4,076	4,060
Calgary Zone	35,301	36,315	37,846	28,263	29,060
Central Zone	7,640	7,784	7,859	5,809	5,907
Edmonton Zone	35,774	36,295	36,672	27,495	27,043
North Zone	4,853	4,946	4,721	3,546	3,487

\*Total number of hospital stays for surgery for eligible conditions. Transfers are excluded.