

## Acute Length of Stay (ALOS) Compared to Expected Length of Stay (ELOS)

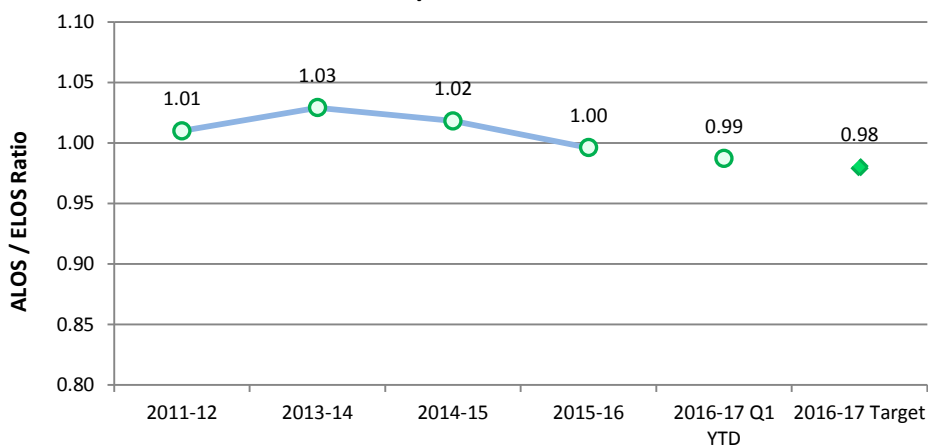
### Measure Definition

The number of acute days patients stay in acute care hospitals compared to the expected length of stay for a typical patient. This measure compares actual length of stay in hospital to expected length of stay after adjusting for factors that affect in-hospital mortality, such as patient age, sex, diagnosis and other conditions. The expected length of stay is based on comparison to similar patients in national databases.

### Understanding this Measure

This measure gauges how efficiently beds are utilized in the hospital. A ratio of actual to expected length of stay which is below one, represents an overall greater than expected efficiency and indicates that more patients are able to be treated for a given inpatient bed. Monitoring this ratio can help health-care teams ensure care appropriateness and efficiency. Improvement in this measure enables the ability to treat more patients with the existing beds and other resources.

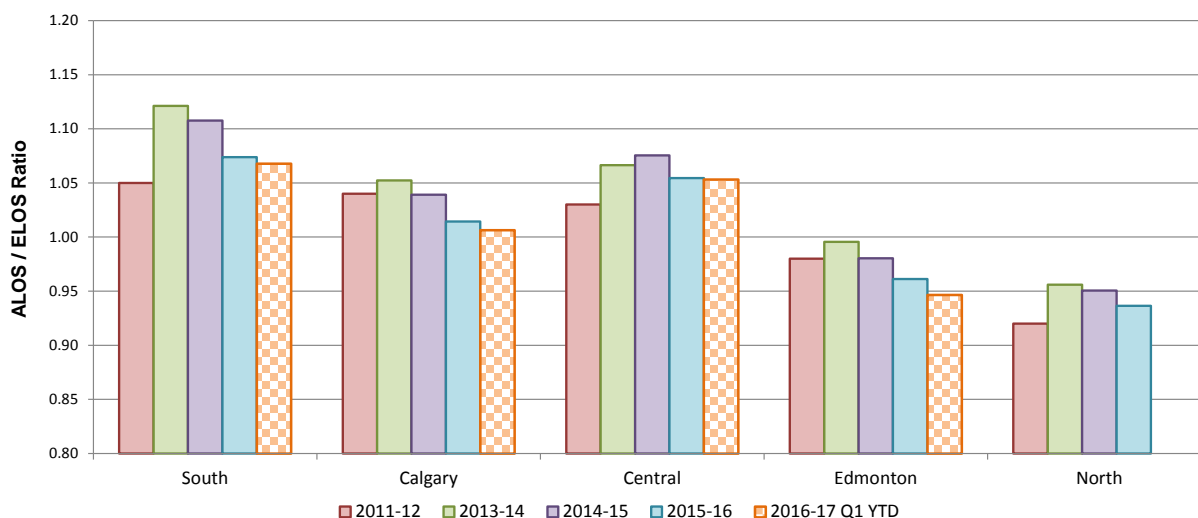
ALOS / ELOS - Annual



### How Do We Compare?

Alberta ranked 3<sup>rd</sup> best nationally out of nine provinces in 2014-15.

ALOS / ELOS - By Zone



NOTE: North Zone data for Q1 has been impacted due to the wildfires in Q1 resulting in the temporary closure of a hospital.

## ALOS/ELOS

### ACTIONS

Zones will complete Phase 1 CoACT elements and begin Phase 2 elements to support patient flow and transitions from care settings across 20 sites. Elements include; integrated plan of care, transition rounds, patient scheduling, standard transition process, bed turn process, right bed, first time, home team, home unit and partnerships with support services.

SCNs are establishing key clinical care pathways to reduce unwarranted practice variation:

- treatment resistant depression
- breast cancer
- rectal cancer
- community diabetic foot care
- in hospital management of diabetes
- pediatric concussion
- chronic obstructive pulmonary disease (COPD)
- primary care asthma treatment
- heart failure pathway
- delirium prevention
- pregnancy
- postpartum and newborn

### SUMMARY

Edmonton Zone achieved target in Q1 2016-17.

Provincial results as well as those for South and Calgary Zones, remained the same or improved compared to last year.

Central Zone saw a slight increase in “All Other Hospitals” ALOS/ELOS, which reflects many rural sites having complex patients and patients at the end of life, with longer length of stays.

North Zone results have been impacted by the temporary closure of Northern Lights Regional Hospital and displacement of the population in Fort McMurray due to the wildfires in Q1.

### DID YOU KNOW

**Clinical care pathways** outline a sequence of activities for specific diagnosis groups or patient populations in order to maximize quality of care, efficient use of resources and improve transitions of care.

## ALOS/ELOS

The number of acute days patients stay in acute care hospitals compared to the expected length of stay for a typical patient.

Acute (Actual) Length of Hospital Stay Compared to Expected Stay	2013-14	2014-15	2015-16	Q1 YTD		Trend	2016-17 Target
				2015-16 Last Year	2016-17 Current		
Trend: ★ Achieved Target, ✓ Stable or better than prior period, ✗ Area requires additional focus							
Provincial	1.03	1.02	1.00	0.99	0.99	✓	0.98
South Zone Total	1.12	1.11	1.07	1.08	1.07	✓	1.06
Chinook Regional Hospital	1.15	1.13	1.09	1.09	1.07	★	1.07
Medicine Hat Regional Hospital	1.15	1.11	1.09	1.10	1.09	★	1.09
All Other Hospitals	0.99	1.04	1.01	1.03	1.01	✓	0.99
Calgary Zone Total	1.05	1.04	1.01	1.01	1.01	✓	0.98
Alberta Children’s Hospital	0.98	0.96	0.94	0.96	0.95	★	0.96
Foothills Medical Centre	1.08	1.07	1.04	1.03	1.03	✓	1.00
Peter Lougheed Centre	1.04	1.02	1.02	1.01	1.02	✓	0.98
Rockyview General Hospital	1.05	1.05	1.02	1.02	1.00	✓	0.97
South Health Campus	N/A	1.00	0.95	0.96	0.93	★	0.95
All Other Hospitals	1.00	1.01	0.96	0.93	1.03	✗	0.96
Central Zone Total	1.07	1.08	1.05	1.03	1.05	✗	1.04
Red Deer Regional Hospital Centre	1.09	1.11	1.09	1.08	1.08	✓	1.07
All Other Hospitals	1.04	1.04	1.02	0.99	1.03	✗	1.01
Edmonton Zone Total	1.00	0.98	0.96	0.96	0.95	★	0.96
Grey Nuns Community Hospital	0.99	0.98	0.96	0.95	0.92	★	0.96
Misericordia Community Hospital	1.04	1.03	0.98	1.01	0.92	★	0.99
Royal Alexandra Hospital	0.99	0.97	0.96	0.95	0.96	✗	0.95
Stollery Children’s Hospital	1.00	1.01	0.98	1.01	1.02	✓	0.98
Sturgeon Community Hospital	0.99	0.96	0.92	0.95	0.94	✓	0.93
University of Alberta Hospital	0.97	0.97	0.95	0.94	0.94	★	0.95
All Other Hospitals	1.10	1.01	1.03	1.01	1.05	✗	0.97
North Zone Total	0.96	0.95	0.94	0.93	0.93	★	0.93
Northern Lights Regional Health Centre <sup>+</sup>	0.96	0.97	0.93	0.93	N/A	N/A	0.95
Queen Elizabeth II Hospital	0.97	0.94	0.93	0.91	0.93	✗	0.92
All Other Hospitals	0.95	0.95	0.94	0.94	0.93	★	0.93

<sup>+</sup> North Zone results have been impacted by the temporary closure of Northern Lights Regional Hospital and displacement of the population in Fort McMurray due to the wildfires in Q1.

Total Discharges	2013-14	2014-15	2015-16	Q1 YTD	
				2015-16 Last Year	2016-17 Current
<b>Provincial</b>	<b>393,765</b>	<b>401,331</b>	<b>404,513</b>	<b>91,581</b>	<b>93,536</b>
South Zone	31,093	31,125	30,485	7,955	7,937
Calgary Zone	136,598	140,563	143,057	36,075	36,957
Central Zone	44,589	45,691	45,578	11,934	11,648
Edmonton Zone	135,970	139,052	141,282	35,617	36,994
North Zone <sup>+</sup>	45,515	44,900	44,111	N/A	N/A

<sup>+</sup> North Zone results have been impacted by the temporary closure of Northern Lights Regional Hospital and displacement of the population in Fort McMurray due to the wildfires in Q1.