

Continuing Care Placement

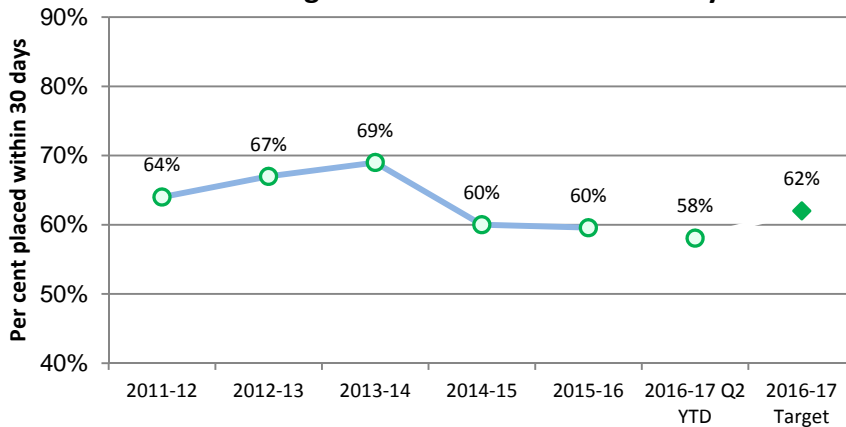
Measure Definition

The percentage of clients admitted to a continuing care space (designated supportive living or long-term care) within 30 days of the date they are assessed and approved for placement. This includes patients/clients assessed and approved and waiting in hospital or community.

Understanding this Measure

Providing appropriate care for our aging population is extremely important to Albertans. Timely access to continuing care (designated supportive living or long-term care) ensures higher quality of life for our seniors. In addition, by improving access to continuing care, AHS is able to improve flow throughout the system, provide more appropriate care, decrease wait times and deliver care in a more cost effective manner.

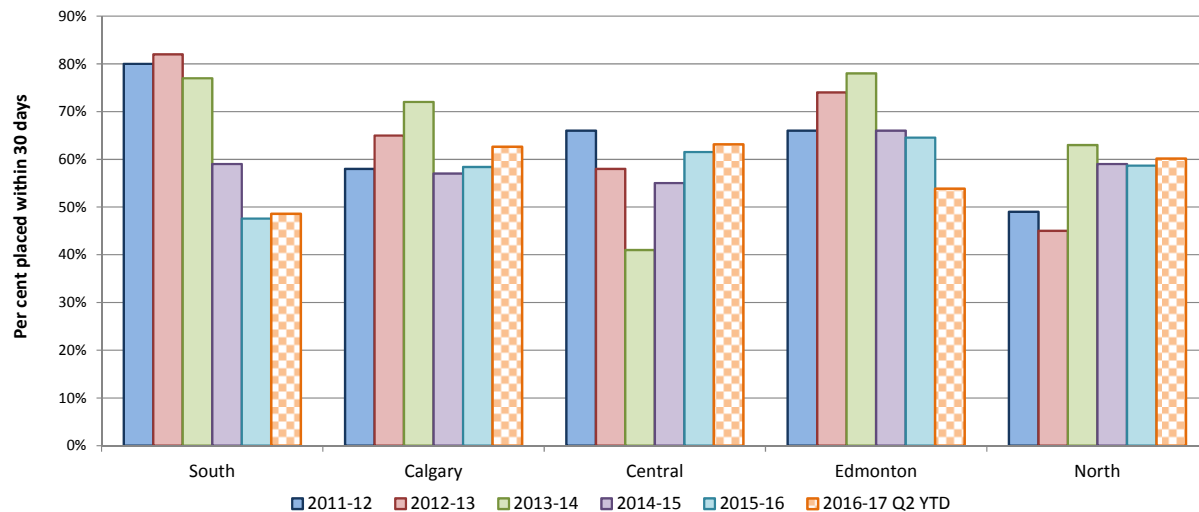
Continuing Care Placement within 30 days - Annual



How Do We Compare?

Comparable national data is not available for this measure.

Continuing Care Placement within 30 days - By Zone



Continuing Care Placement

ACTIONS

Work continues across the province to implement the Seniors Health Continuing Care Capacity Plan. Significant work has been done to date to achieve an increase of 2,000 long-term and dementia care beds within the next four years.

AHS will increase continuing care service capacity (long term care and designated supportive living) by adding 950 net new provincial continuing care spaces with focus on seniors with dementia (supportive living 4 dementia – DSL4-D).

SUMMARY

The percentage of clients admitted to a continuing care space (designated supportive living or long-term care) within 30 days has declined provincially and in three zones. Calgary and Central Zones achieved target.

South Zone demonstrated a slight deterioration with diminishing capacity and growing demand in Lethbridge, Medicine Hat and several rural communities. As well, harder to place clients continue to wait which impacts the rate of placement.

A number of factors affected the measure in the Edmonton Zone. The zone accepted displaced residents from Fort McMurray in Q1. Repatriation is occurring but some of these residents are electing to remain in the zone. There were also major water incidents resulting in the closure of beds and displacement of many residents.

AHS has placed 140 more clients in continuing care living options in Q2 YTD 2016-17 (3,913) as compared to Q2 YTD 2015-16 (3,773).

The number of people waiting in acute care/sub-acute and community for continuing care placement, has increased by 205 individuals from Q2 YTD 2015-16 (n=1,610) to Q2 YTD 2016-17 (n=1,815).

Since April 1, 2016, AHS staffed and placed into operation a total of 224 net new continuing care beds in Q2 YTD for a total of 24,928 community-based services (not including palliative). Since 2010, AHS has opened 5,471 new beds to support individuals who need community-based housing, care and supports. Because the majority of continuing care bed openings in 2016-17 is projected for Q3 and Q4, we have had fewer bed openings in Q2 YTD than required to keep pace with population need. Historically, we know that inconsistent bed and home care growth, even for one fiscal year, can erode previous improvements to waitlist and create community capacity shortfalls that are difficult to reverse.

DID YOU KNOW

In 2015-16, AHS opened 997 continuing care spaces for a total of 24,947 community-based services. These include 717 supportive living beds, 203 long-term care beds, 42 restorative care beds, and 35 community palliative beds.

In addition to opening continuing care spaces, AHS is expanding home care services. This allows more seniors to remain safe and independent in their own homes, which is where they want to be.

AHS is working to ensure beds in acute care are used in the most efficient manner by improving communication between all healthcare team members, patients and families to facilitate discharges and by ensuring that patients are getting the best care for their personal situations.

Continuing Care Placement

The percentage of clients admitted to a continuing care space (supportive living or long-term care) within 30 days of the date they are assessed and approved for placement. This includes patients assessed and approved and waiting in hospital or community.

| Continuing Care Clients Placed within 30 days | 2013-14 | 2014-15 | 2015-16 | Q2 YTD | | Trend | 2016-17 Target |
|---|------------|------------|------------|-------------------|-----------------|----------|----------------|
| | | | | 2015-16 Last Year | 2016-17 Current | | |
| Trend: ★ Achieved Target, ✓ Stable or better than prior period, ✗ Area requires additional focus | | | | | | | |
| Provincial | 69% | 60% | 60% | 60% | 58% | ✗ | 62% |
| South Zone | 77% | 59% | 48% | 53% | 49% | ✗ | 60% |
| Calgary Zone | 72% | 57% | 58% | 56% | 63% | ★ | 60% |
| Central Zone | 41% | 55% | 62% | 64% | 63% | ★ | 61% |
| Edmonton Zone | 78% | 66% | 65% | 64% | 54% | ✗ | 65% |
| North Zone | 63% | 59% | 59% | 62% | 60% | ✗ | 62% |

Note: Patients placed within 30 days of being assessed and approved for continuing care space. Includes those waiting in hospital or community.

| Total Placed | 2013-14 | 2014-15 | 2015-16 | Q2 YTD | |
|-------------------|--------------|--------------|--------------|-------------------|-----------------|
| | | | | 2015-16 Last Year | 2016-17 Current |
| Provincial | 7,693 | 7,810 | 7,879 | 3,813 | 3,913 |
| South Zone | 868 | 866 | 887 | 417 | 457 |
| Calgary Zone | 2,164 | 2,548 | 2,722 | 1,287 | 1,183 |
| Central Zone | 1,189 | 1,259 | 1,060 | 574 | 673 |
| Edmonton Zone | 2,742 | 2,443 | 2,506 | 1,215 | 1,246 |
| North Zone | 730 | 694 | 704 | 320 | 354 |