

## Acute Length of Stay (ALOS) Compared to Expected Length of Stay (ELOS)

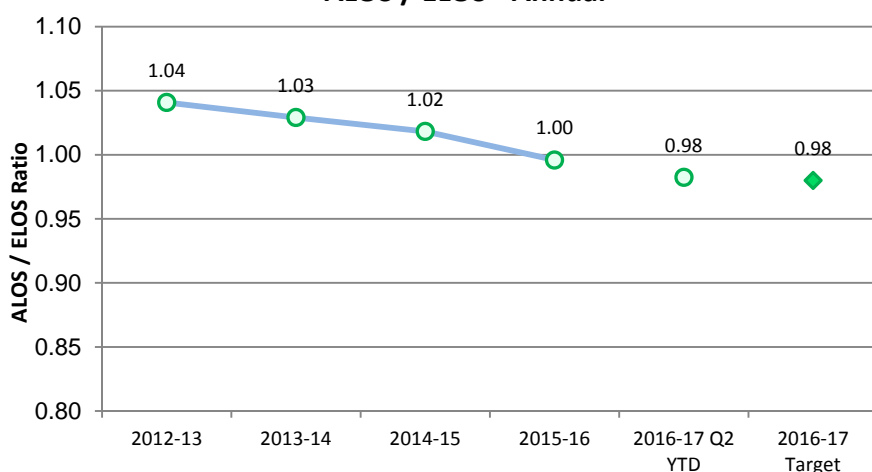
### Measure Definition

The number of acute days patients stay in acute care hospitals compared to the expected length of stay for a typical patient. This measure compares actual length of stay in hospital to expected length of stay after adjusting for factors that affect in-hospital mortality, such as patient age, sex, diagnosis and other conditions. The expected length of stay is based on comparison to similar patients in national databases.

### Understanding this Measure

This measure gauges how efficiently beds are utilized in the hospital. A ratio of actual to expected length of stay which is below one, represents an overall greater than expected efficiency and indicates that more patients are able to be treated for a given inpatient bed. Monitoring this ratio can help health-care teams ensure care appropriateness and efficiency. Improvement in this measure enables the ability to treat more patients with the existing beds and other resources.

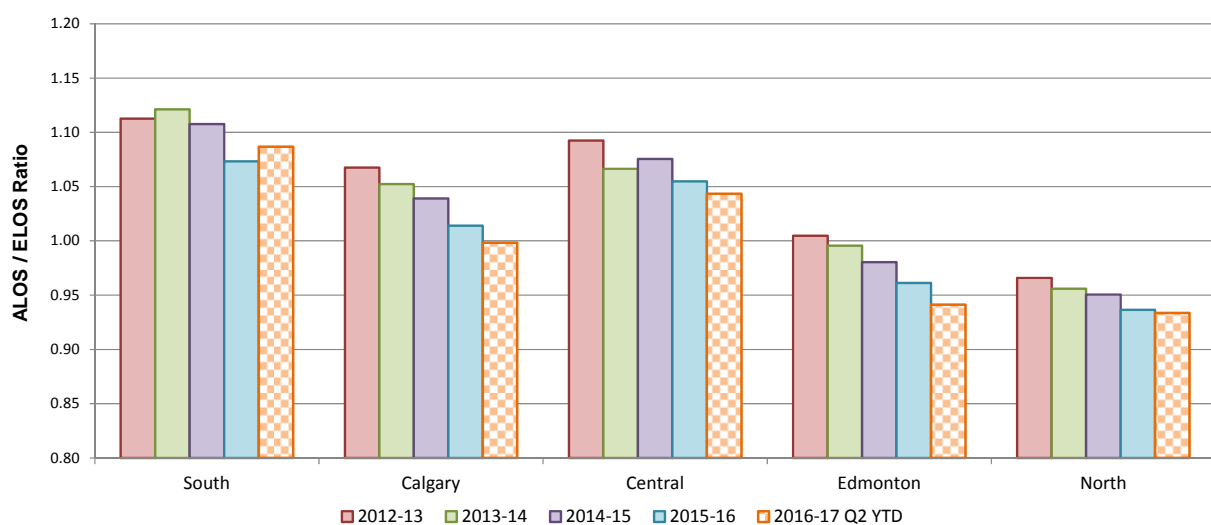
### ALOS / ELOS - Annual



### How Do We Compare?

Alberta ranked 3<sup>rd</sup> best nationally out of nine provinces in 2015-16.

### ALOS / ELOS - By Zone



## ALOS/ELOS

### **ACTIONS**

Zones will complete Phase 1 CoACT elements and continue implementation on Phase 2 elements to support patient flow and transitions from care settings across 20 sites. Elements include; integrated care suite, quality suite, transition rounds, patient scheduling, standard transition process, bed turn process, right bed, first time, home team, home unit, collaborative care team, collaborative care orientation, team charters and partnerships with support services.

Strategic Clinical Networks (SCNs) are establishing key clinical care pathways to reduce unwarranted practice variation:

- treatment resistant depression
- breast cancer
- rectal cancer
- community diabetic foot care
- in hospital management of diabetes
- pediatric concussion
- chronic obstructive pulmonary disease (COPD)
- primary care asthma treatment
- heart failure
- delirium prevention
- pregnancy
- postpartum and newborn

### **SUMMARY**

Provincial as well as Central, Edmonton and North Zones have achieved target in Q2 YTD. South and Calgary Zones showed improvement.

### **DID YOU KNOW**

**Clinical care pathways** outline a sequence of activities for specific diagnosis groups or patient populations in order to maximize quality of care, efficient use of resources and to improve transitions of care.

**CoACT** is an innovative model of care in which care provider teams collaborate more closely with patients. This provincial program designs tools and processes for Collaborative Care.

## ALOS/ELOS

The number of acute days patients stay in acute care hospitals compared to the expected length of stay for a typical patient.

Acute (Actual) Length of Hospital Stay Compared to Expected Stay	2013-14	2014-15	2015-16	Q2 YTD		Trend	2016-17 Target
				2015-16 Last Year	2016-17 Current		
Trend: ★ Achieved Target, ✓ Stable or better than prior period, ✗ Area requires additional focus							
Provincial	1.03	1.02	1.00	1.00	0.98	★	0.98
South Zone Total	1.12	1.11	1.07	1.08	1.09	✓	1.06
Chinook Regional Hospital	1.15	1.13	1.09	1.10	1.10	✓	1.07
Medicine Hat Regional Hospital	1.15	1.11	1.09	1.09	1.10	✓	1.09
All Other Hospitals	0.99	1.04	1.00	1.00	1.00	✓	0.99
Calgary Zone Total	1.05	1.04	1.01	1.01	1.00	✓	0.98
Alberta Children’s Hospital	0.98	0.96	0.95	0.93	0.93	★	0.96
Foothills Medical Centre	1.08	1.07	1.04	1.05	1.04	✓	1.00
Peter Lougheed Centre	1.04	1.02	1.02	1.02	1.01	✓	0.98
Rockyview General Hospital	1.05	1.05	1.02	1.02	0.98	✓	0.97
South Health Campus	N/A	1.00	0.95	0.95	0.91	★	0.95
All Other Hospitals	1.00	1.01	0.96	0.94	1.02	✗	0.96
Central Zone Total	1.07	1.08	1.05	1.04	1.04	★	1.04
Red Deer Regional Hospital Centre	1.09	1.11	1.09	1.08	1.08	✓	1.07
All Other Hospitals	1.04	1.04	1.02	1.01	1.00	★	1.01
Edmonton Zone Total	1.00	0.98	0.96	0.96	0.94	★	0.96
Grey Nuns Community Hospital	0.99	0.98	0.96	0.95	0.91	★	0.96
Misericordia Community Hospital	1.04	1.03	0.98	1.01	0.92	★	0.99
Royal Alexandra Hospital	0.99	0.97	0.96	0.96	0.95	★	0.95
Stollery Children’s Hospital	1.00	1.01	0.98	1.01	0.98	★	0.98
Sturgeon Community Hospital	0.99	0.96	0.92	0.93	0.93	★	0.93
University of Alberta Hospital	0.97	0.97	0.95	0.96	0.94	★	0.95
All Other Hospitals	1.10	1.01	1.03	1.02	1.04	✗	0.97
North Zone Total	0.96	0.95	0.94	0.93	0.93	★	0.93
Northern Lights Regional Health Centre	0.96	0.97	0.93	0.92	0.96	✗	0.95
Queen Elizabeth II Hospital	0.97	0.94	0.93	0.91	0.93	✗	0.92
All Other Hospitals	0.95	0.95	0.94	0.94	0.93	★	0.93

Total Discharges	2013-14	2014-15	2015-16	Q2 YTD	
				2015-16 Last Year	2016-17 Current
<b>Provincial</b>	<b>393,765</b>	<b>401,331</b>	<b>404,515</b>	<b>202,674</b>	<b>204,088</b>
South Zone	31,093	31,125	30,485	15,513	15,450
Calgary Zone	136,598	140,563	143,063	70,994	72,281
Central Zone	44,589	45,691	45,577	23,045	23,011
Edmonton Zone	135,970	139,052	141,279	70,834	72,431
North Zone	45,515	44,900	44,111	22,288	20,915