

Surgical Readmissions

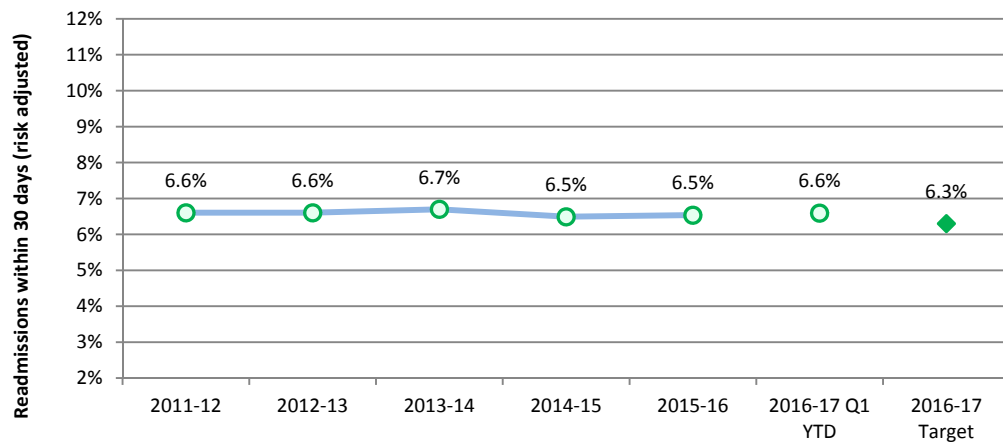
Measure Definition

The percentage of surgical patients with unplanned readmission to hospital within 30 days of leaving the hospital. Excludes surgical patients who require scheduled follow-up care.

Understanding this Measure

Unplanned readmissions to hospitals are used to measure quality of surgical care and follow-up. Readmission rates are also influenced by a variety of other factors, including the effectiveness of the care transition to the community. NOTE: This measure is reported a quarter later due to the requirement to follow-up with patients after the end of the reporting quarter.

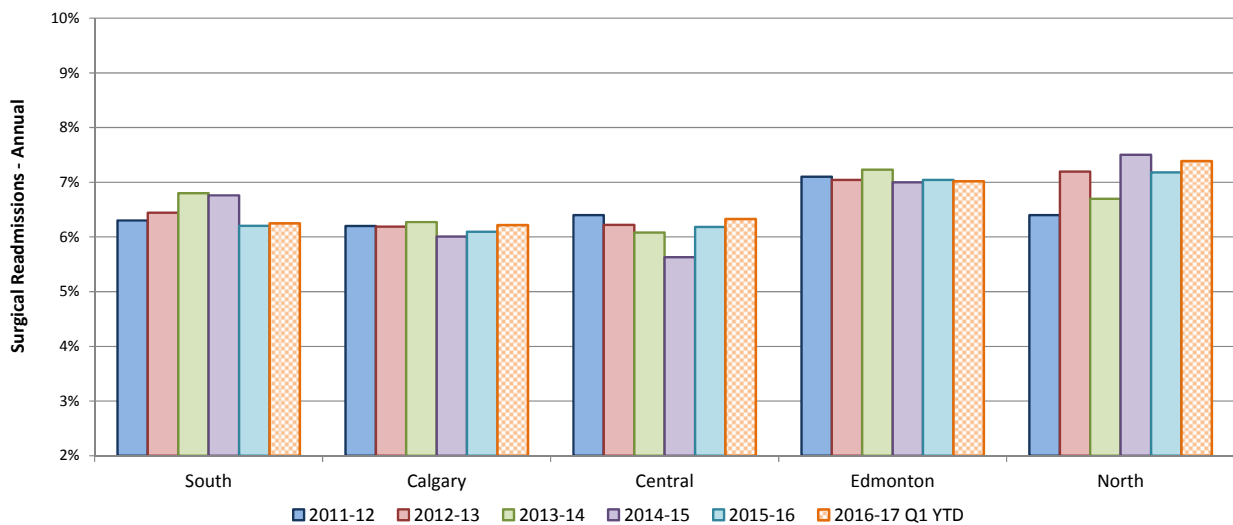
Surgical Readmissions - Annual



How Do We Compare?

Alberta ranked 5th best nationally out of ten provinces and the same as the national rate in 2014-15.

Surgical Readmissions - by Zone



Note: North Zone results have been impacted by the temporary closure of Northern Lights Regional Hospital and displacement in Fort McMurray due to the wildfires in Q1.

Surgical Readmissions

ACTIONS

Zones will continue the spread and scale of Enhanced Recovery After Surgery (ERAS) by implementing 12 new protocols at the largest tertiary centres already utilizing ERAS principles; and, expansion of the Colorectal Pathway to Red Deer Regional Hospital, Rockyview General Hospital and Chinook Regional Hospital.

Zones will continue to implement National Surgery Quality Improvement Project (NSQIP) with demonstrable quality improvement projects in five sites across Alberta. Trauma Quality Improvement Program (TQIP) will be implemented at Level 1/2 trauma centers in Alberta. This program is supported by the Surgery Strategic Clinical Network (SCN).

Zones will complete implementation and optimization of Adult Coding Access Targets for Surgery (aCATS) to help measure wait times and prioritize scheduled surgeries. This program is also supported by the Surgery SCN.

The Elder-Friendly Approaches to the Surgical Environment (EASE) research project will be implemented at other acute care sites across the province to improve surgical outcomes specifically for the aged.

SUMMARY

The most recent data for this measure is a quarter behind. This analysis is based on Q1 2016-17.

Provincial, Calgary, Edmonton and North Zones are performing at or above the same period as last year in Q1.

South Zone demonstrated a decline in performance. The team will continue to review the data and all relevant cases to determine cause and develop an action plan.

Surgical readmissions deteriorated slightly at Red Deer Regional Hospital Centre (RDRHC) in the Central Zone due to OR flooding. Significantly higher risk procedures and cancer cases were maintained at the RDRHC site while day surgical cases were temporarily offloaded. It is generally expected that day surgical cases have less likelihood of readmission.

DID YOU KNOW

AHS is working with its Strategic Clinical Networks to ensure quality of surgical care and follow-up. Reducing the frequency with which patients return to the hospital can both improve care and lower costs.

National Surgery Quality Improvement Project (NSQIP) uses clinical data to measure and improve performance thereby reducing the rate of preventable surgical complications. **Trauma Quality Improvement Program (TQIP)** works to enhance the quality of care for trauma patients.

Adult Coding Access Targets for Surgery (aCATS) helps deliver exceptional surgical care in a safe and timely manner. It is a standardized diagnosis-based system to help prioritize surgeries offered throughout the province.

Enhanced Recovery After Surgery (ERAS) helps patients get back to normal as quickly as possible by providing new and consistent ways of managing care before, during and after surgery.

Elder-friendly Approaches to the Surgical Environment (EASE) is a clinical research study – a collaboration between AHS and the Faculty of Medicine & Dentistry at the University of Alberta – that aims to implement elder-friendly practices during and after surgery to better support the older patient through their hospital stay, thereby improving post-operative outcomes.

Surgical Readmissions

The percentage of surgical patients with unplanned readmission to hospital within 30 days of leaving the hospital. Excludes surgical patients who require scheduled follow up care.

Surgical Readmissions within 30 days (Risk Adjusted)	2013-14	2014-15	2015-16	Q1 YTD		Trend	2016-17 Target
				2015-16 Last Year	2016-17 Current		
Trend: ★ Achieved Target, ✓ Stable or better than prior period, ✗ Area requires additional focus							
Provincial	6.7%	6.5%	6.5%	6.8%	6.6%	✓	6.3%
South Zone Total	6.8%	6.8%	6.2%	5.4%	6.2%	✗	6.0%
Chinook Regional Hospital	6.7%	7.8%	5.8%	4.9%	6.5%	★	6.6%
Medicine Hat Regional Hospital	7.2%	5.1%	6.7%	6.3%	5.5%	✓	5.2%
All Other Hospitals	4.9%	5.9%	8.5%	8.4%	10.3%	✗	5.4%
Calgary Zone Total	6.3%	6.0%	6.1%	6.5%	6.2%	✓	5.9%
Foothills Medical Centre	6.8%	6.1%	6.4%	6.8%	6.5%	✓	6.0%
Peter Lougheed Centre	5.6%	6.0%	6.2%	6.1%	6.2%	✗	5.9%
Rockyview General Hospital	6.2%	6.2%	5.9%	6.3%	5.7%	★	6.1%
South Health Campus	N/A	5.9%	6.1%	7.3%	7.2%	✓	5.7%
All Other Hospitals	2.5%	1.6%	1.5%	1.1%	2.1%	✗	1.7%
Central Zone Total	6.1%	5.6%	6.2%	6.2%	6.3%	✗	5.8%
Red Deer Regional Hospital Centre	6.1%	5.9%	6.3%	6.2%	6.7%	✗	5.8%
All Other Hospitals	6.0%	4.6%	5.7%	6.4%	5.1%	★	5.8%
Edmonton Zone Total	7.2%	7.0%	7.0%	7.1%	7.0%	✓	6.5%
Grey Nuns Community Hospital	5.9%	5.8%	6.4%	7.1%	6.4%	✓	5.7%
Misericordia Community Hospital	6.9%	7.3%	6.6%	5.8%	7.6%	✗	6.8%
Royal Alexandra Hospital	7.5%	7.0%	6.9%	6.8%	7.0%	✗	6.8%
Sturgeon Community Hospital	5.5%	5.9%	5.9%	7.0%	4.7%	★	5.7%
University of Alberta Hospital	8.2%	7.7%	8.0%	8.1%	7.6%	✓	7.3%
All Other Hospitals	4.1%	4.7%	4.7%	5.4%	5.0%	✓	4.7%
North Zone Total	6.7%	7.5%	7.2%	9.0%	7.4%	✓	7.1%
Northern Lights Regional Health Centre ⁺	6.5%	7.6%	6.6%	5.3%	N/A	N/A	6.8%
Queen Elizabeth II Hospital	7.2%	7.8%	7.5%	10.3%	7.2%	★	7.4%

+ North Zone results have been impacted by the temporary closure of Northern Lights Regional Hospital and displacement in Fort McMurray due to the wildfires in Q1.

Eligible Surgical Cases (Index)*	2013-14	2014-15	2015-16	Q1 YTD	
				2015-16 Last Year	2016-17 Current
Provincial	90,811	92,530	93,178	24,016	24,427
South Zone	5,471	5,432	5,396	1,415	1,424
Calgary Zone	36,315	37,846	38,972	10,011	10,353
Central Zone	7,784	7,859	7,835	2,069	2,125
Edmonton Zone	36,295	36,672	36,267	9,324	9,542
North Zone ⁺	4,946	4,721	4,708	1,197	983

*Total number of hospital stays for surgery for eligible conditions. Transfers are excluded.

+ North Zone results have been impacted by the temporary closure of Northern Lights Regional Hospital and displacement in Fort McMurray due to the wildfires in Q1.