

Continuing Care Placement

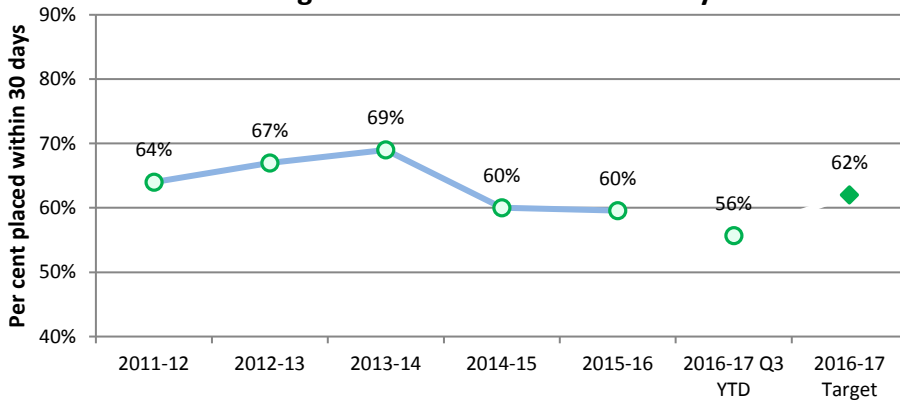
Measure Definition

The percentage of clients admitted to a continuing care space (designated supportive living or long-term care) within 30 days of the date they are assessed and approved for placement. This includes patients/clients assessed and approved and waiting in hospital or community.

Understanding this Measure

Providing appropriate care for our aging population is extremely important to Albertans. Timely access to continuing care (designated supportive living or long-term care) ensures higher quality of life for our seniors. In addition, by improving access to continuing care, AHS is able to improve flow throughout the system, provide more appropriate care, decrease wait times and deliver care in a more cost effective manner.

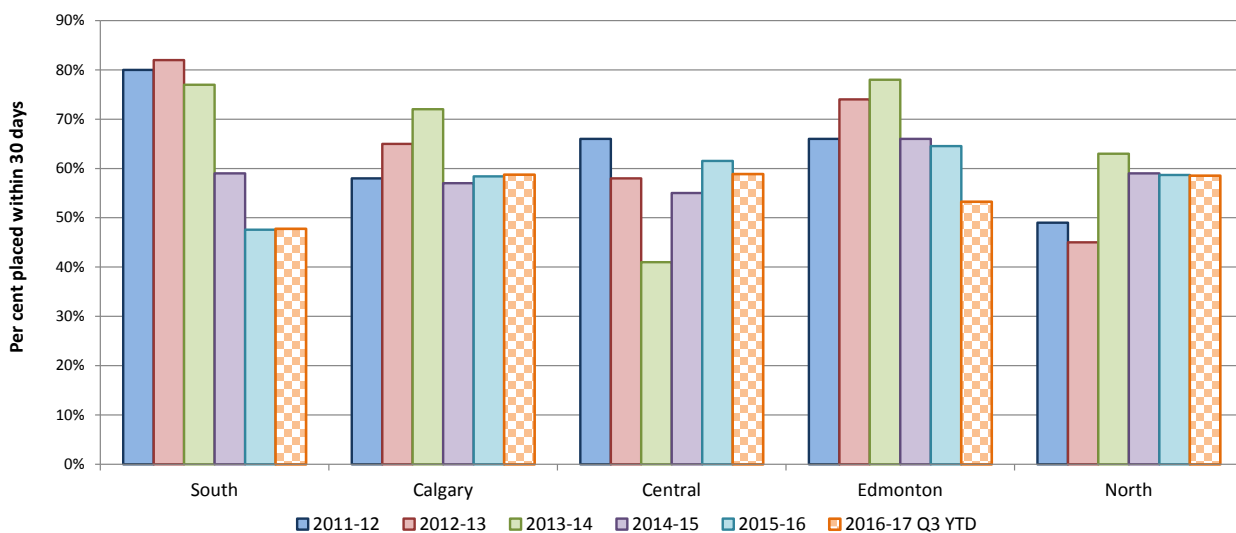
Continuing Care Placement within 30 days - Annual



How Do We Compare?

Comparable national data is not available for this measure.

Continuing Care Placement within 30 days - By Zone



Continuing Care Placement

ACTIONS

Work continues across the province to implement the Seniors Health Continuing Care Capacity Plan. Significant work has been done to date to achieve an increase of 2,000 long-term and dementia care beds within the next four years.

AHS will increase continuing care service capacity (long term care and designated supportive living) by adding net new provincial continuing care spaces with focus on seniors with dementia (supportive living 4 dementia – DSL4-D). Continuing care includes auxiliary hospitals, nursing homes, supportive living spaces, and community palliative and hospice (out of hospital) spaces.

SUMMARY

The percentage of clients admitted to a continuing care space (designated supportive living or long-term care) within 30 days has deteriorated provincially and in three zones. Calgary, South and North Zones have remained stable or improved.

To address the rate of spending in 2016-17, a decision was made to defer the opening of some continuing care and addiction and mental health community care spaces and minimize growth of home care program spending. In addition, a planned project has been delayed into next fiscal year due to construction issues. These changes are driving longer waits and higher waitlists for placement into Continuing Care Living Options. AHS is projecting to open 506 in 2016-17. All delayed/deferred care spaces are planned to open in the 2017-18 fiscal year.

Edmonton Zone had major water incidents and restoration work that has resulted in displacement and repatriation of residents. Ongoing work with long term care providers to expedite repairs.

Central Zone reduction in placement mainly due to late fall influenza outbreak at facilities, impact of the new waitlist information system and delays in new admissions in Red Deer due to expanded placement capacity creating movement in beds.

Since April 1, 2016, AHS staffed and placed into operation a total of 328 net new continuing care beds in Q3 YTD for a total of 25,032 community-based services (not including palliative). Since 2010, AHS has opened 5,575 new beds to support individuals who need community-based housing, care and supports.

DID YOU KNOW

In 2015-16, AHS opened 997 continuing care spaces for a total of 24,947 community-based services. These include 717 supportive living beds, 203 long-term care beds, 42 restorative care beds, and 35 community palliative beds.

In addition to opening continuing care spaces, AHS is expanding home care services. This allows more seniors to remain safe and independent in their own homes, which is where they want to be.

AHS is working to ensure beds in acute care are used in the most efficient manner by improving communication between all healthcare team members, patients and families to facilitate discharges and by ensuring that patients are getting the best care for their personal situations.

Continuing Care Placement

The percentage of clients admitted to a continuing care space (supportive living or long-term care) within 30 days of the date they are assessed and approved for placement. This includes patients assessed and approved and waiting in hospital or community.

Continuing Care Clients Placed within 30 days	2013-14	2014-15	2015-16	Q3 YTD		Trend	2016-17 Target
				2015-16 Last Year	2016-17 Current		
Trend: ★ Achieved Target, ✓ better or ⇔ stable than prior period*, ✗ Area requires additional focus							
Provincial	69%	60%	60%	59%	56%	✗	62%
South Zone	77%	59%	48%	49%	48%	⇔	60%
Calgary Zone	72%	57%	58%	56%	59%	✓	60%
Central Zone	41%	55%	62%	63%	59%	✗	61%
Edmonton Zone	78%	66%	65%	64%	53%	✗	65%
North Zone	63%	59%	59%	59%	59%	✓	62%

Note: Patients placed within 30 days of being assessed and approved for continuing care space. Includes those waiting in hospital or community.

* "Stable" trend indicates when current period performance (Q3 year-to-date) is within 5% from the same time period as last year.

Total Placed	2013-14	2014-15	2015-16	Q3 YTD	
				2015-16 Last Year	2016-17 Current
Provincial	7,693	7,810	7,879	5,894	5,846
South Zone	868	866	887	667	666
Calgary Zone	2,164	2,548	2,722	1,984	1,757
Central Zone	1,189	1,259	1,060	859	1,011
Edmonton Zone	2,742	2,443	2,506	1,872	1,915
North Zone	730	694	704	512	497