

Surgical Readmissions

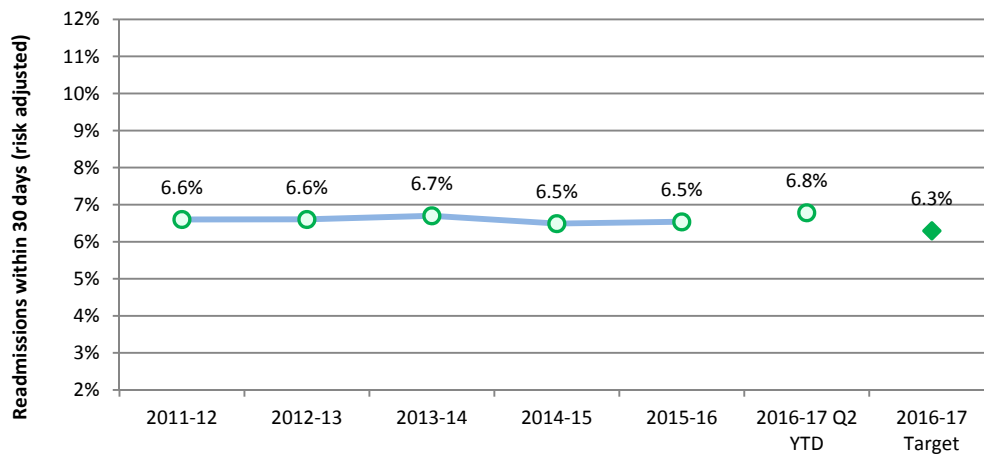
Measure Definition

The percentage of surgical patients with unplanned readmission to hospital within 30 days of leaving the hospital. Excludes surgical patients who require scheduled follow-up care.

Understanding this Measure

Unplanned readmissions to hospitals are used to measure quality of surgical care and follow-up. Readmission rates are also influenced by a variety of other factors, including the effectiveness of the care transition to the community. NOTE: This measure is reported a quarter later due to the requirement to follow-up with patients after the end of the reporting quarter.

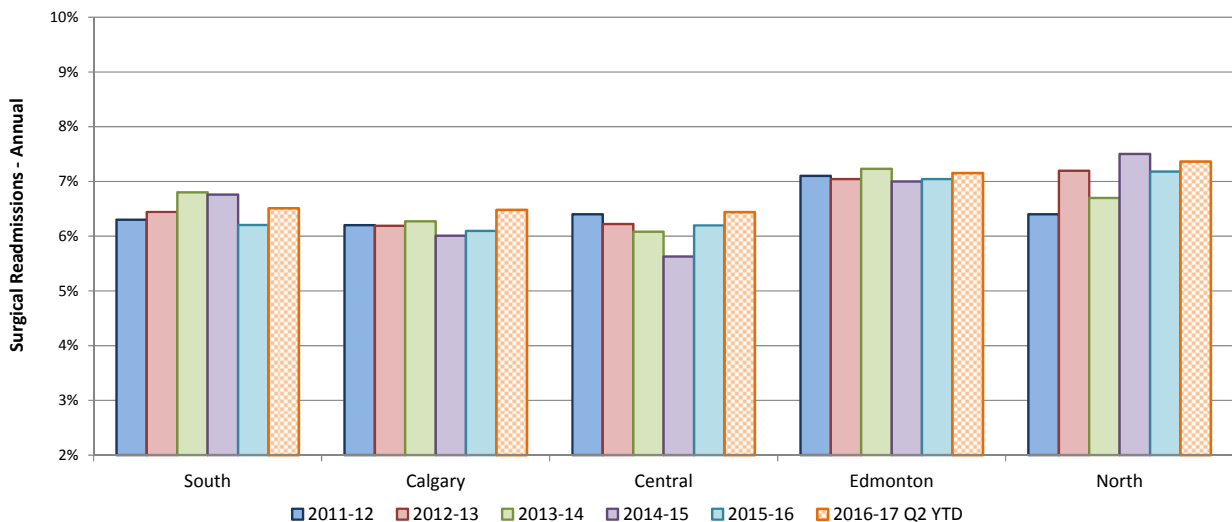
Surgical Readmissions - Annual



How Do We Compare?

Alberta ranked 5th best nationally out of ten provinces and the same as the national rate in 2014-15.

Surgical Readmissions - by Zone



Note: North Zone results have been impacted by the temporary closure of Northern Lights Regional Hospital and displacement in Fort McMurray due to the wildfires in Q1.

Surgical Readmissions

ACTIONS

Zones will continue the spread and scale of Enhanced Recovery After Surgery (ERAS) by implementing 12 new protocols at the largest tertiary centres already utilizing ERAS principles; and, expansion of the Colorectal Pathway to Red Deer Regional Hospital, Rockyview General Hospital and Chinook Regional Hospital.

Zones will continue to implement National Surgery Quality Improvement Project (NSQIP) with demonstrable quality improvement projects in five sites across Alberta. Trauma Quality Improvement Program (TQIP) will be implemented at Level 1/2 trauma centers in Alberta. This program is supported by the Surgery Strategic Clinical Network (SCN).

Zones will complete implementation and optimization of Adult Coding Access Targets for Surgery (aCATS) to help measure wait times and prioritize scheduled surgeries. This program is also supported by the Surgery SCN.

The Elder-Friendly Approaches to the Surgical Environment (EASE) research project will be implemented at other acute care sites across the province to improve surgical outcomes specifically for the aged.

SUMMARY

The most recent data for this measure is a quarter behind. This analysis is based on Q2 2016-17.

Provincially and three zones performed better than the same period as last year. Calgary Zone remained stable. South Zone Chinook Regional Hospital demonstrated deterioration, however, it is still achieving site target.

aCATs has been implemented in all sites performing surgery. This helps sites and zones develop diagnosis and urgency-based targets for surgery to assist with prioritizing the right patient at the right time for the right surgery.

NSQIP studies show half or more of all complications occur after the patient leaves the hospital, often leading to costly readmissions. NSQIP tracks patients for 30 days after their operation, providing a more complete picture of their care. This information helps inform best practice guidelines to help hospitals target problem areas and improve surgical outcomes. The additional tracking provides insight as to why patients are readmitted, how readmissions can be avoided and in some cases, a NSQIP follow-up phone call by a nurse can avoid readmission.

DID YOU KNOW

AHS is working with its Strategic Clinical Networks to ensure quality of surgical care and follow-up. Reducing the frequency with which patients return to the hospital can both improve care and lower costs.

National Surgery Quality Improvement Project (NSQIP) uses clinical data to measure and improve performance thereby reducing the rate of preventable surgical complications.

Trauma Quality Improvement Program (TQIP) works to enhance the quality of care for trauma patients.

Adult Coding Access Targets for Surgery (aCATS) helps deliver exceptional surgical care in a safe and timely manner. It is a standardized diagnosis-based system to help prioritize surgeries offered throughout the province.

Enhanced Recovery After Surgery (ERAS) helps patients get back to normal as quickly as possible by providing new and consistent ways of managing care before, during and after surgery.

Elder-friendly Approaches to the Surgical Environment (EASE) is a clinical research study – a collaboration between AHS and the Faculty of Medicine & Dentistry at the University of Alberta – that aims to implement elder-friendly practices during and after surgery to better support the older patient through their hospital stay, thereby improving post-operative outcomes.

Surgical Readmissions

The percentage of surgical patients with unplanned readmission to hospital within 30 days of leaving the hospital. Excludes surgical patients who require scheduled follow up care.

Surgical Readmissions within 30 days (Risk Adjusted)	2013-14	2014-15	2015-16	Q2 YTD		Trend	2016-17 Target
				2015-16 Last Year	2016-17 Current		
Trend: ★ Achieved Target, ✓ better or ⇔ stable than prior period*, ✗ Area requires additional focus							
Provincial	6.7%	6.5%	6.5%	6.8%	6.8%	✓	6.3%
South Zone Total	6.8%	6.8%	6.2%	5.9%	6.5%	✗	6.0%
Chinook Regional Hospital	6.7%	7.8%	5.8%	5.3%	6.3%	★	6.6%
Medicine Hat Regional Hospital	7.2%	5.1%	6.7%	6.9%	6.9%	✓	5.2%
All Other Hospitals	4.9%	5.9%	8.5%	8.1%	7.4%	✓	5.4%
Calgary Zone Total	6.3%	6.0%	6.1%	6.4%	6.5%	⇔	5.9%
Foothills Medical Centre	6.8%	6.1%	6.4%	6.7%	6.8%	⇔	6.0%
Peter Lougheed Centre	5.6%	6.0%	6.2%	6.4%	6.4%	✓	5.9%
Rockyview General Hospital	6.2%	6.2%	5.9%	6.2%	6.2%	✓	6.1%
South Health Campus	N/A	5.9%	6.1%	7.0%	6.6%	✓	5.7%
All Other Hospitals	2.5%	1.6%	1.5%	0.9%	1.5%	★	1.7%
Central Zone Total	6.1%	5.6%	6.2%	6.5%	6.4%	✓	5.8%
Red Deer Regional Hospital Centre	6.1%	5.9%	6.3%	6.7%	6.9%	⇔	5.8%
All Other Hospitals	6.0%	4.6%	5.7%	5.7%	5.2%	★	5.8%
Edmonton Zone Total	7.2%	7.0%	7.0%	7.2%	7.2%	✓	6.5%
Grey Nuns Community Hospital	5.9%	5.8%	6.4%	7.3%	7.0%	✓	5.7%
Misericordia Community Hospital	6.9%	7.3%	6.6%	6.6%	7.1%	✗	6.8%
Royal Alexandra Hospital	7.5%	7.0%	6.9%	6.9%	6.7%	★	6.8%
Sturgeon Community Hospital	5.5%	5.9%	5.9%	6.0%	5.6%	★	5.7%
University of Alberta Hospital	8.2%	7.7%	8.0%	8.2%	8.1%	✓	7.3%
All Other Hospitals	4.1%	4.7%	4.7%	5.0%	4.2%	★	4.7%
North Zone Total	6.7%	7.5%	7.2%	8.1%	7.4%	✓	7.1%
Northern Lights Regional Health Centre	6.5%	7.6%	6.6%	6.4%	N/A	N/A	6.8%
Queen Elizabeth II Hospital	7.2%	7.8%	7.4%	8.6%	7.0%	★	7.4%
All Other Hospitals	6.0%	7.0%	7.0%	8.0%	7.2%	✓	6.8%

North Zone results have been impacted by the temporary closure of Northern Lights Regional Hospital and displacement in Fort McMurray due to the wildfires in Q1.

* "Stable" trend indicates when current period performance (Q3 year-to-date) is within 5% from the same time period as last year.

Eligible Surgical Cases (Index)*	2013-14	2014-15	2015-16	Q2 YTD	
				2015-16 Last Year	2016-17 Current
Provincial	90,811	92,530	93,178	45,725	46,451
South Zone	5,471	5,432	5,396	2,678	2,695
Calgary Zone	36,315	37,846	38,972	19,016	19,436
Central Zone	7,784	7,859	7,835	3,906	4,036
Edmonton Zone	36,295	36,672	36,267	17,826	18,137
North Zone	4,946	4,721	4,708	2,299	2,147

*Total number of hospital stays for surgery for eligible conditions. Transfers are excluded.

North Zone results have been impacted by the temporary closure of Northern Lights Regional Hospital and displacement in Fort McMurray due to the wildfires in Q1.