

Surgical Readmissions

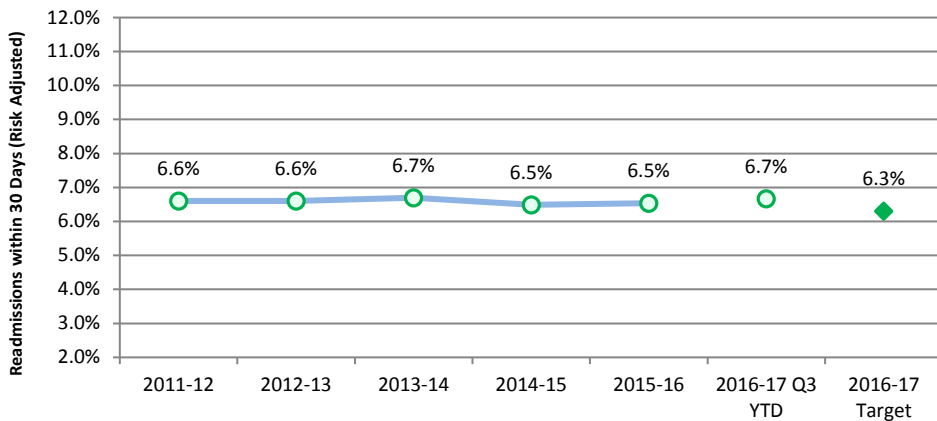
Measure Definition

The percentage of surgical patients with unplanned readmission to hospital within 30 days of leaving the hospital. Excludes surgical patients who require scheduled followup care.

Understanding this Measure

Unplanned readmissions to hospitals are used to measure quality of surgical care and followup. Readmission rates are also influenced by a variety of other factors, including the effectiveness of the care transition to the community. Note: This measure is reported a quarter later due to the requirement to followup with patients after the end of the reporting quarter.

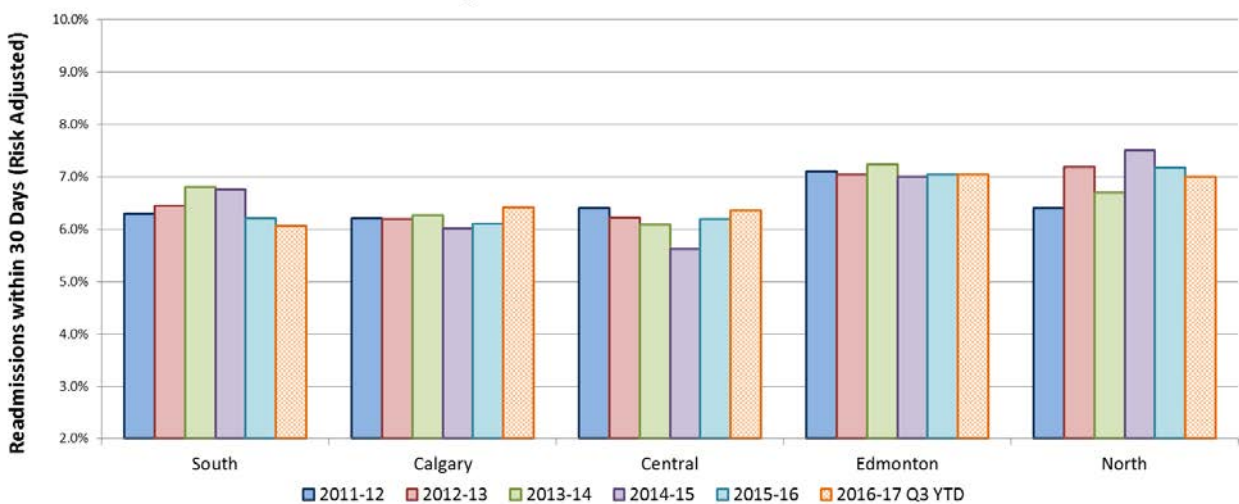
Surgical Readmissions - Annual



How Do We Compare?

Alberta ranked 5th best nationally out of ten provinces and the same as the national rate in 2014-15.

Surgical Readmissions - Zone



Note: North Zone results have been impacted by the temporary closure of Northern Lights Regional Hospital and displacement in Fort McMurray due to the wildfires in Q1.

Surgical Readmissions

HIGHLIGHTS

AHS is working with its Strategic Clinical Networks to ensure quality of surgical care and follow-up, which can reduce the frequency with which patients return to the hospital thereby improving care and lowering healthcare costs.

Enhanced Recovery After Surgery (ERAS) program standardizes care before, during and after surgery to get patients back on their feet quicker while shortening hospital stays and reducing complications after surgery. This program started with one pathway (colon/rectal cancer) at two sites, then 10 pathways at 16 sites and is now spreading to over 50 sites.

The National Surgery Quality Improvement Program (NSQIP) uses clinical data to measure and improve performance thereby reducing the rate of preventable surgical complications. NSQIP studies show half or more of all complications occur after the patient leaves the hospital, often leading to costly readmissions. NSQIP tracks patients for 30 days after their operation, providing a more complete picture of their care. This information helps inform best practice guidelines to help hospitals target problem areas and improve surgical outcomes. The additional tracking provides insight as to why patients are readmitted, how readmissions can be avoided and in some cases, a NSQIP follow-up phone call by a nurse can avoid readmission.

Elder-friendly Approaches to the Surgical Environment (EASE) is a clinical research study – a collaboration between AHS and the Faculty of Medicine & Dentistry at the University of Alberta – that aims to implement elder-friendly practices during and after surgery to better support the older patient through their hospital stay, thereby improving post-operative outcomes.

SUMMARY OF RESULTS

The most recent data for this measure is a quarter behind. This analysis is based on Q3 YTD 2016-17.

South and North Zones achieved target for Q3 YTD. Central and Edmonton Zones showed improvement from the same period as last year. Provincial results remained stable compared to the same period as last year. A deeper analysis of data (not shown) finds that Calgary Zone deteriorated from the same period as last year but has seen improvement quarter over quarter (Q2 = 6.8% to Q3 = 6.2%). In addition, Calgary Zone surgical readmission rates remain amongst the lowest in the province.

One way to reduce readmissions is to ensure patients are informed and educated on their procedure and follow-up care even before they are admitted. Pre-admission clinics assist the patient and families in being adequately prepared for elective surgery. Patients are taught about their surgery, anesthesia and recovery period.

Surgical Readmissions

The percentage of surgical patients with unplanned readmission to hospital within 30 days of leaving the hospital. Excludes surgical patients who require scheduled followup care.

Surgical Readmissions within 30 days (Risk Adjusted)	2013-14	2014-15	2015-16	Q3 YTD		Trend	2016-17 Target
				2015-16 Last Year	2016-17 Current		
Trend: ★ Target Achieved; ✓ Improving; ⇔ Stable; ✖ Performance not improving							
Provincial	6.7%	6.5%	6.5%	6.6%	6.7%	⇔	6.3%
South Zone Total	6.8%	6.8%	6.2%	6.3%	6.0%	★	6.0%
Chinook Regional Hospital	6.7%	7.8%	5.8%	5.9%	5.8%	★	6.6%
Medicine Hat Regional Hospital	7.2%	5.1%	6.7%	6.8%	6.3%	✓	5.2%
All Other Hospitals	4.9%	5.9%	8.5%	8.7%	7.6%	✓	5.4%
Calgary Zone Total	6.3%	6.0%	6.1%	6.2%	6.4%	✖	5.9%
Foothills Medical Centre	6.8%	6.1%	6.4%	6.4%	6.7%	✖	6.0%
Peter Lougheed Centre	5.6%	6.0%	6.2%	6.3%	6.4%	⇔	5.9%
Rockyview General Hospital	6.2%	6.2%	5.9%	5.9%	6.1%	★	6.1%
South Health Campus	N/A	5.9%	6.1%	6.5%	7.2%	✖	5.7%
All Other Hospitals	2.5%	1.6%	1.5%	1.8%	1.7%	★	1.7%
Central Zone Total	6.1%	5.6%	6.2%	6.6%	6.3%	✓	5.8%
Red Deer Regional Hospital Centre	6.1%	5.9%	6.3%	6.7%	6.8%	⇔	5.8%
All Other Hospitals	6.0%	4.6%	5.7%	6.1%	5.0%	★	5.8%
Edmonton Zone Total	7.2%	7.0%	7.0%	7.1%	7.0%	✓	6.5%
Grey Nuns Community Hospital	5.9%	5.8%	6.4%	6.6%	6.8%	✖	5.7%
Misericordia Community Hospital	6.9%	7.3%	6.6%	6.6%	6.6%	★	6.8%
Royal Alexandra Hospital	7.5%	7.0%	6.9%	6.9%	6.8%	★	6.8%
Sturgeon Community Hospital	5.5%	5.9%	5.9%	5.9%	5.9%	⇔	5.7%
University of Alberta Hospital	8.2%	7.7%	8.0%	8.0%	7.9%	✓	7.3%
All Other Hospitals	4.1%	4.7%	4.7%	4.8%	4.3%	★	4.7%
North Zone Total	6.7%	7.5%	7.2%	7.7%	7.0%	★	7.1%
Northern Lights Regional Health Centre	6.5%	7.6%	6.6%	6.9%	7.7%	✖	6.8%
Queen Elizabeth II Hospital	7.2%	7.8%	7.4%	7.9%	6.8%	★	7.4%
All Other Hospitals	6.0%	7.0%	7.0%	7.6%	6.9%	✓	6.8%

North Zone results have been impacted by the temporary closure of Northern Lights Regional Hospital and displacement in Fort McMurray due to the wildfires in Q1.

* "Stable" trend indicates when current period performance is ≤ 3% from the same time period as last year.

Eligible Surgical Cases (Index)*	2013-14	2014-15	2015-16	Q3 YTD	
				2015-16 Last Year	2016-17 Current
Provincial	90,811	92,530	93,178	69,559	70,329
South Zone	5,471	5,432	5,396	4,059	4,063
Calgary Zone	36,315	37,846	38,972	29,062	29,325
Central Zone	7,784	7,859	7,835	5,905	6,144
Edmonton Zone	36,295	36,672	36,267	27,047	27,439
North Zone	4,946	4,721	4,708	3,486	3,358

*Total number of hospital stays for surgery for eligible conditions. Transfers are excluded.

North Zone results have been impacted by the temporary closure of Northern Lights Regional Hospital and displacement in Fort McMurray due to the wildfires in Q1.