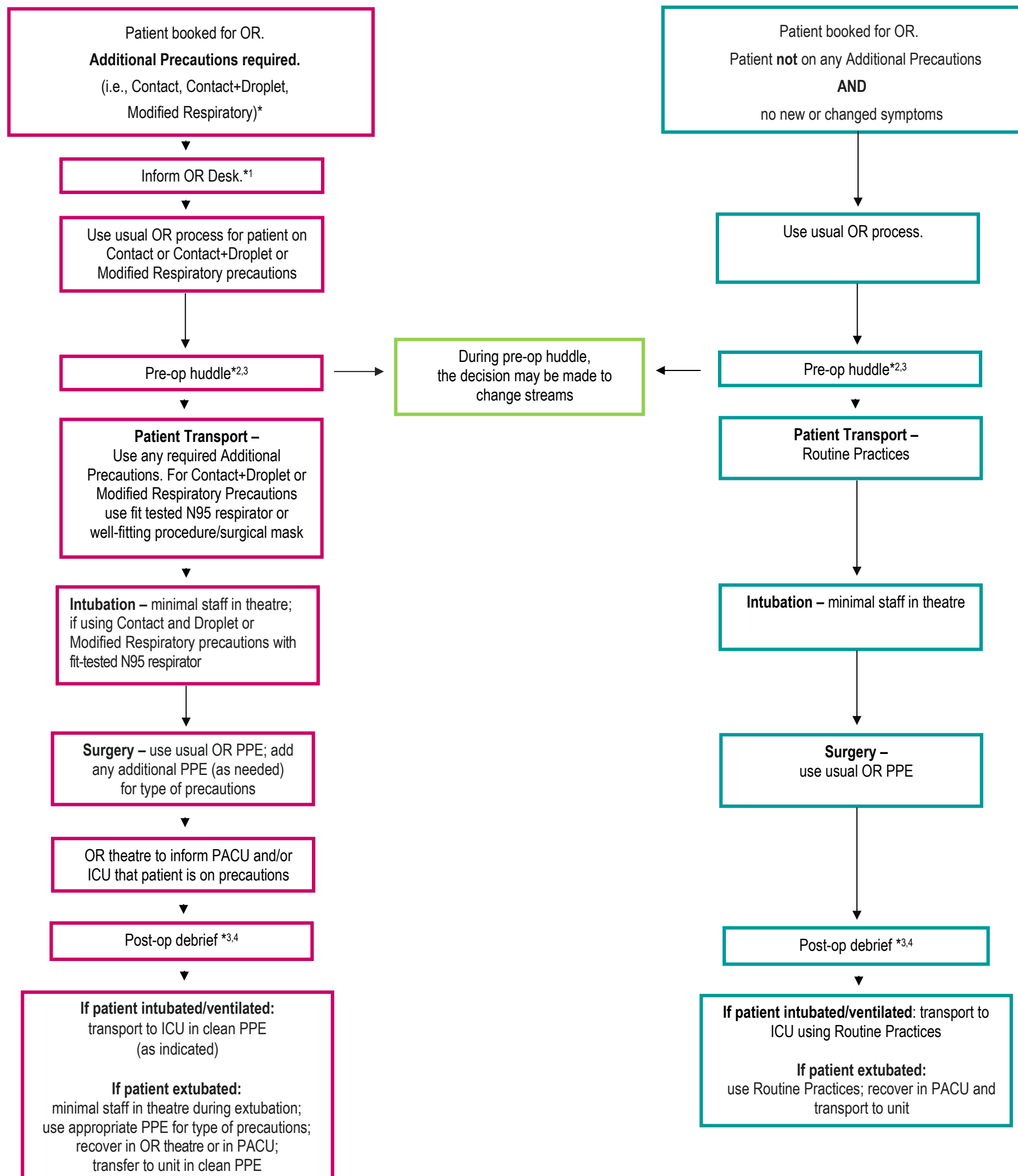


# Infection Prevention and Control Risk Assessment (IPC RA) Algorithm for Patients Requiring Surgery

- Use the appropriate type of additional precautions (i.e., isolation) for any patient presenting with new or changed respiratory and/or gastrointestinal symptoms.
- **This algorithm does not apply to patients on Airborne Precautions.** See [Airborne Precautions in Operating Rooms](#) for patients on airborne precautions.
- Patients can be managed in any OR theatre. **Designated OR theatres are not required** for patients on additional precautions other than Airborne Precautions.
- Use “OR Theatre Between Case Clean” between cases. Use “OR Theatre End of Day Clean” after last case of the day. [Procedures available on Insite.]



**\* Notes:**

1. Schedule at any time of day (i.e., no need to schedule at end of day).
2. Pre-operative huddle: Confirm patient’s IPC risk assessment. Discuss disposition of the patient including intra-operative and post-operative PPE requirements.
3. Communication to PACU occurs in pre-operative huddle. Changes must also be communicated clearly during the post-operative debrief.
4. Post-operative debrief: Communicate to PACU if any changes to care plan or post-operative recovery location. If no changes, follow Routine Practices and proceed with standard patient care.