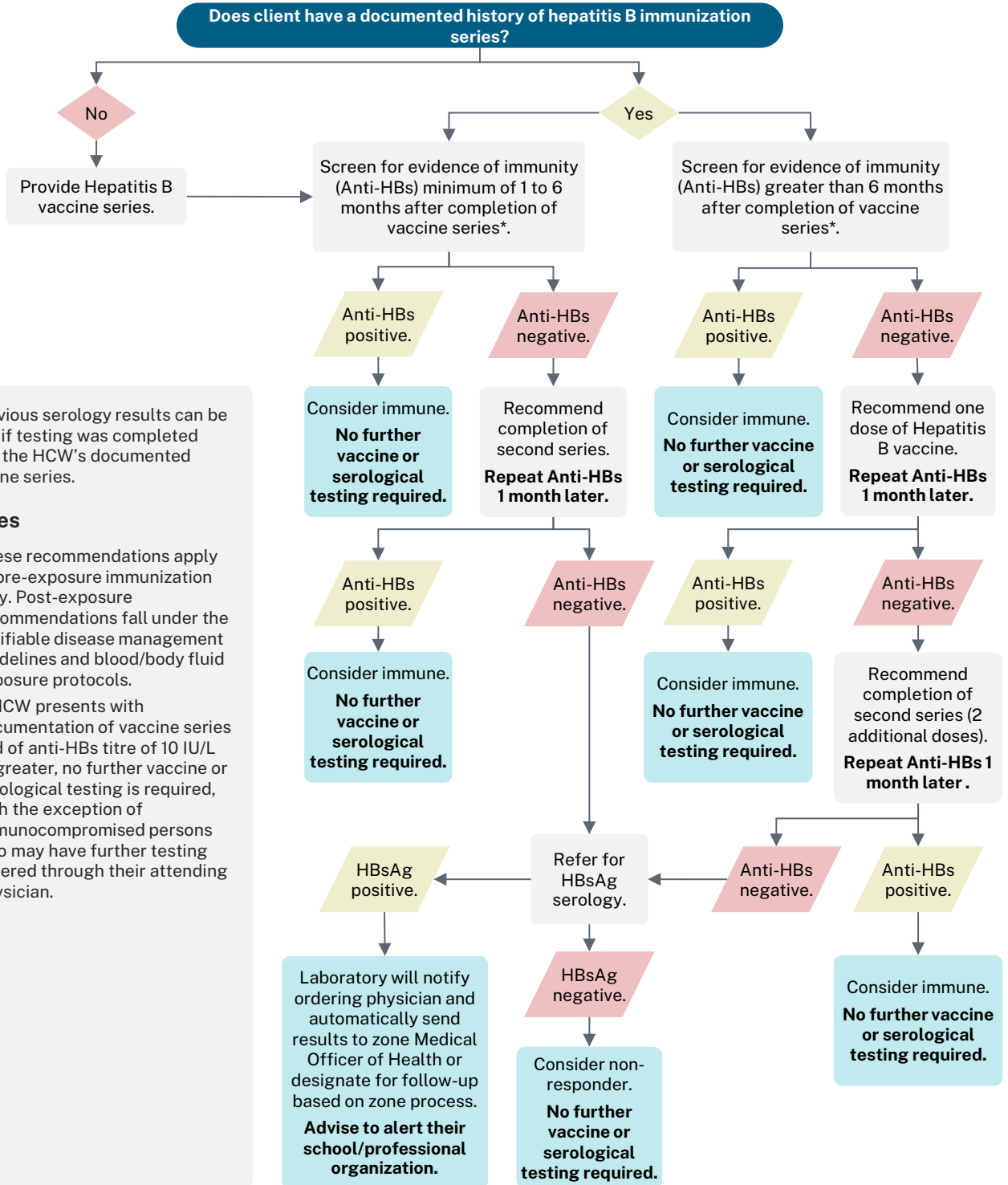


# Pre-exposure hepatitis B vaccine recommendations algorithm for Health Care Workers not at high-risk of past infection

\* Use this algorithm in conjunction with the [Standard for Immunization of Health Care Workers](#), [Standard for Immunization of Post-secondary Health Care Students and Students in Other High-Risk Occupational Programs](#) and the [Hepatitis B Vaccine Biological Page](#).



\* Previous serology results can be used if testing was completed after the HCW's documented vaccine series.

### Notes

- These recommendations apply to pre-exposure immunization only. Post-exposure recommendations fall under the notifiable disease management guidelines and blood/body fluid exposure protocols.
- If HCW presents with documentation of vaccine series and of anti-HBs titre of 10 IU/L or greater, no further vaccine or serological testing is required, with the exception of immunocompromised persons who may have further testing ordered through their attending physician.