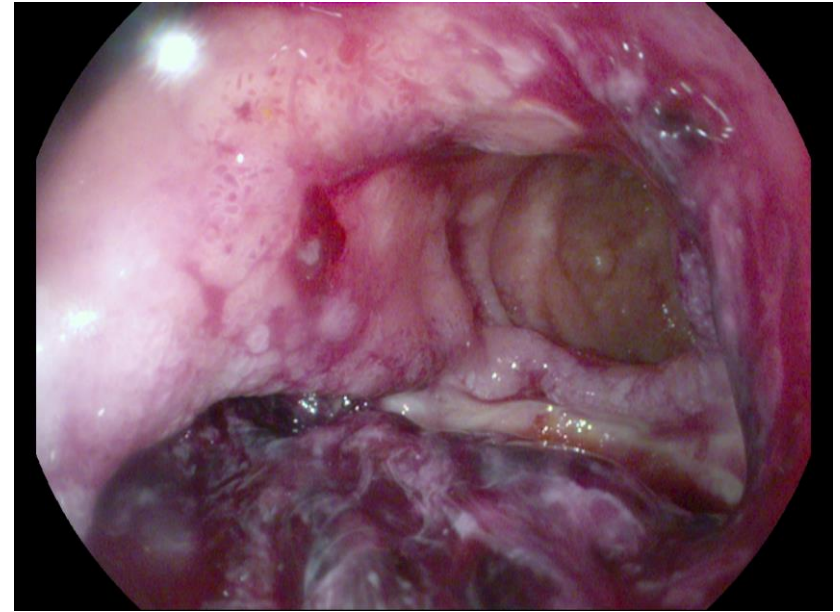


Use of Glasgow Blatchford Score to Decrease Admission Rates of Patients with Low Risk Non-Variceal Gastrointestinal Bleeding



J Halasz, G Kaplan, E Lang, K Novak
Department of Medicine, University of Calgary, Calgary, AB, Canada

Clinical Decision Support Tools

- What are they?
- How are they used?
- Why are they beneficial?

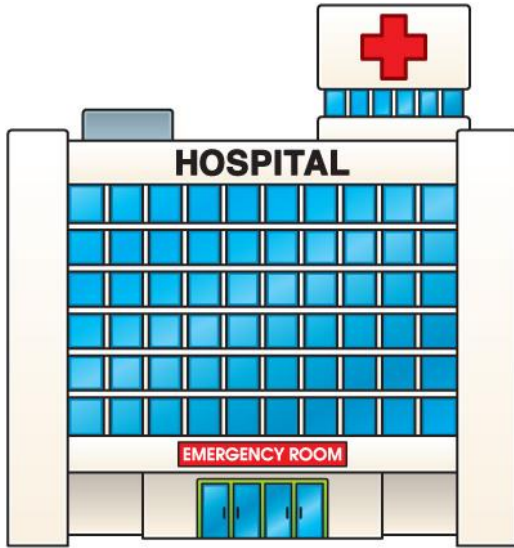
Glasgow Blatchford Score (GBS)



CULTURE

The word "CULTURE" is displayed in a bold, sans-serif font. Each letter is a different color: 'C' is orange, 'U' is maroon, 'L' is red, 'T' is dark grey, 'U' is bright yellow, 'R' is maroon, and 'E' is orange-red. Below each letter, a hand is visible, holding it from underneath. There are seven hands in total, each holding one letter. The hands are of various skin tones and are positioned at the bottom of the frame, against a plain white background.

Results



Admission rates for low risk patients decreased 8.2%



GBS is useful for risk stratification



The decision algorithm helped facilitate, expedite, or change clinician decision making

Lessons Learned

