

Alberta Rectal Cancer Initiative

Implementation of a provincial rectal cancer care pathway improves care

W. D. Buie, T. McMullen, F. Coutinho,
M. Shea-Budgell, A. Elwi,
on behalf of the ***Alberta Rectal Cancer Initiative***
(ARCI)
... in partnership with the Cancer Strategic Clinical
Network

Calgary
October 25, 2016

Rectal Cancer Care



Best practice is efficient, cost effective
and provides better outcomes

Multidisciplinary
Interdisciplinary



Surgery

Radiology

Pathology

Radiation
Oncology

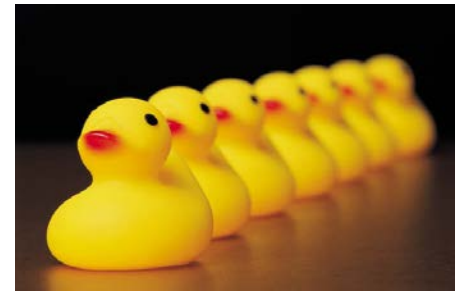
Medical
oncology

Issue:

Variable practice
Variable reporting



Variable outcomes



Aim and Methods

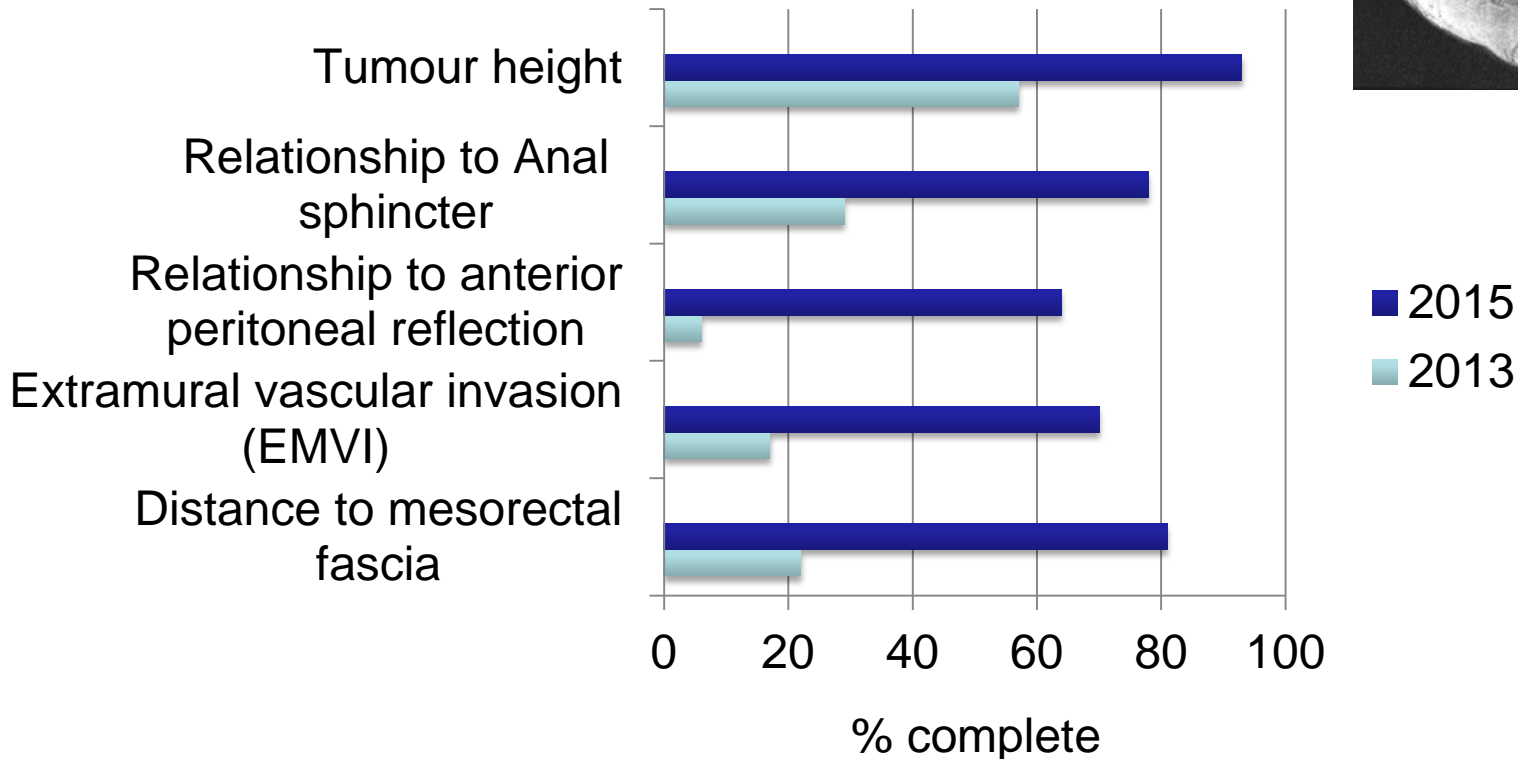
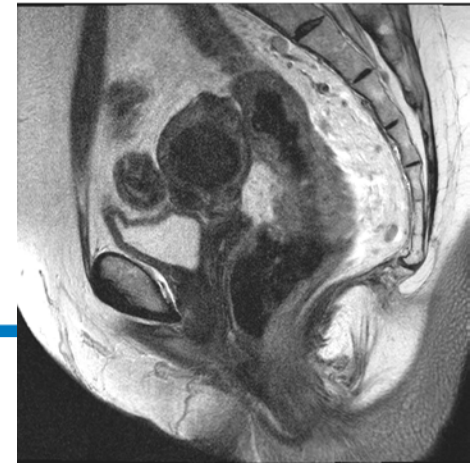
Aim

- Create and implement a provincial evidence-based care pathway to standardize rectal cancer care and improve outcomes.

Methods

- Base line data collection from all disciplines (2010- 2013)
- Discipline specific goals and quality measures were identified
- Focused discipline specific educational initiatives
- Adoption of standardized care and synoptic reports
- Personalized clinician feedback on quality measures (individual and aggregate)

Results : Use of Staging MRI and Completeness of MRI reports 2013 - 2015



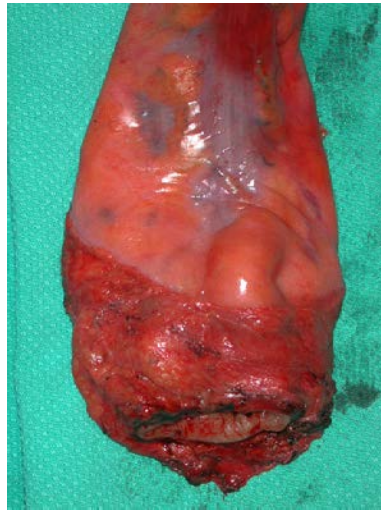
Use of preoperative staging MRI has increased from 53% to 67%

Improvements in Surgical Technique

- 91% specimens - grade 1 (complete) or grade 2 (near complete)
- Circumferential margin positivity – 7%

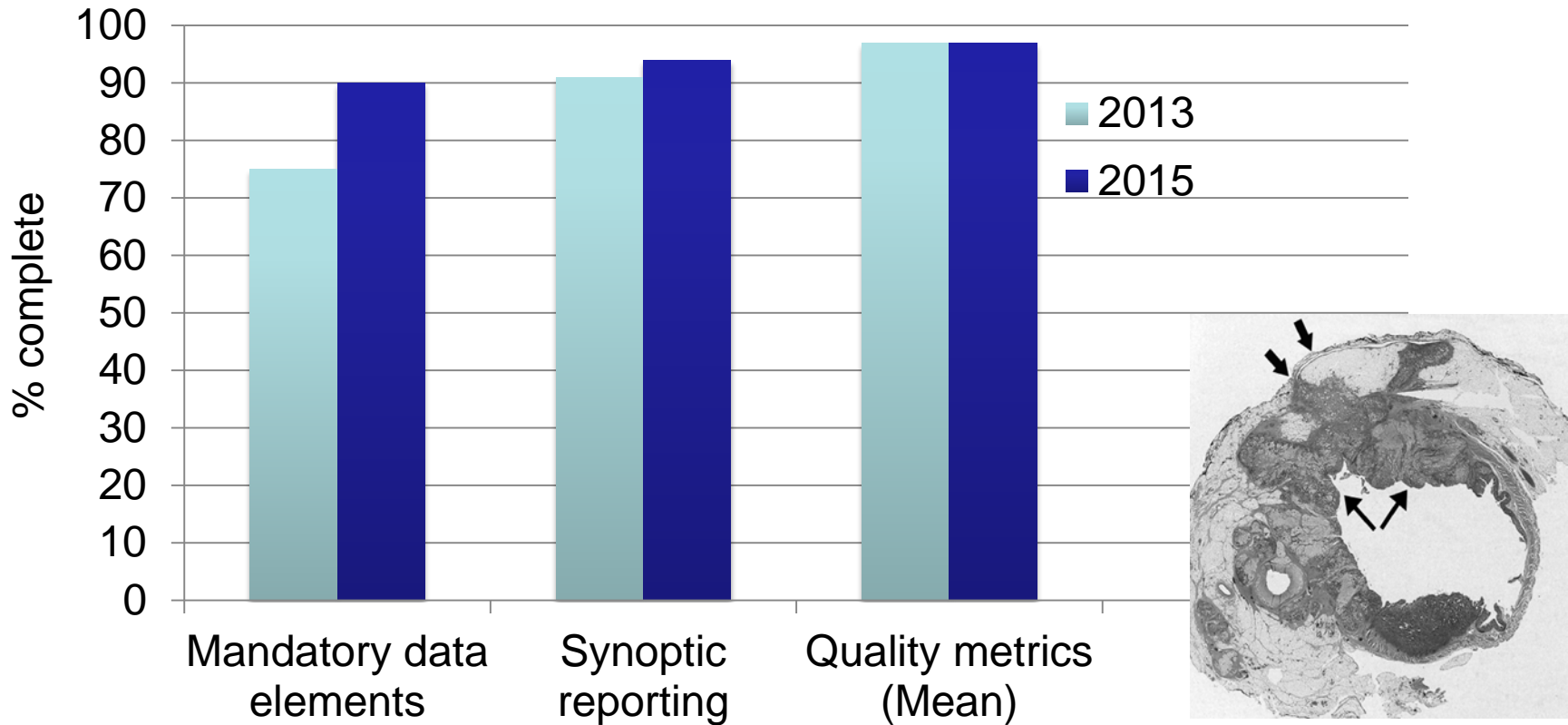


Grade 1



Grade 3

Completeness of pathology reports

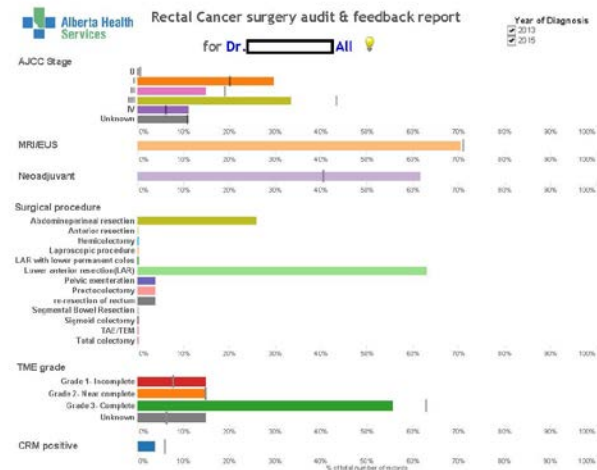




Conclusion

Implementation of a provincial care pathway for rectal cancer has improved:

- Preoperative staging
- Pathologic reporting
- Surgical outcomes
- This model is sustainable and adaptable to other tumour groups



Best practice is efficient, cost effective and provides better outcomes