

Integrate, Sustain, Spread the Triple Aim Approach

Improve Population Health,
Improve People's Experience of Care,
Reduce Per Capita Healthcare Costs

Quality Summit: *Igniting Change*

26 October, 2015

Crispin Kontz

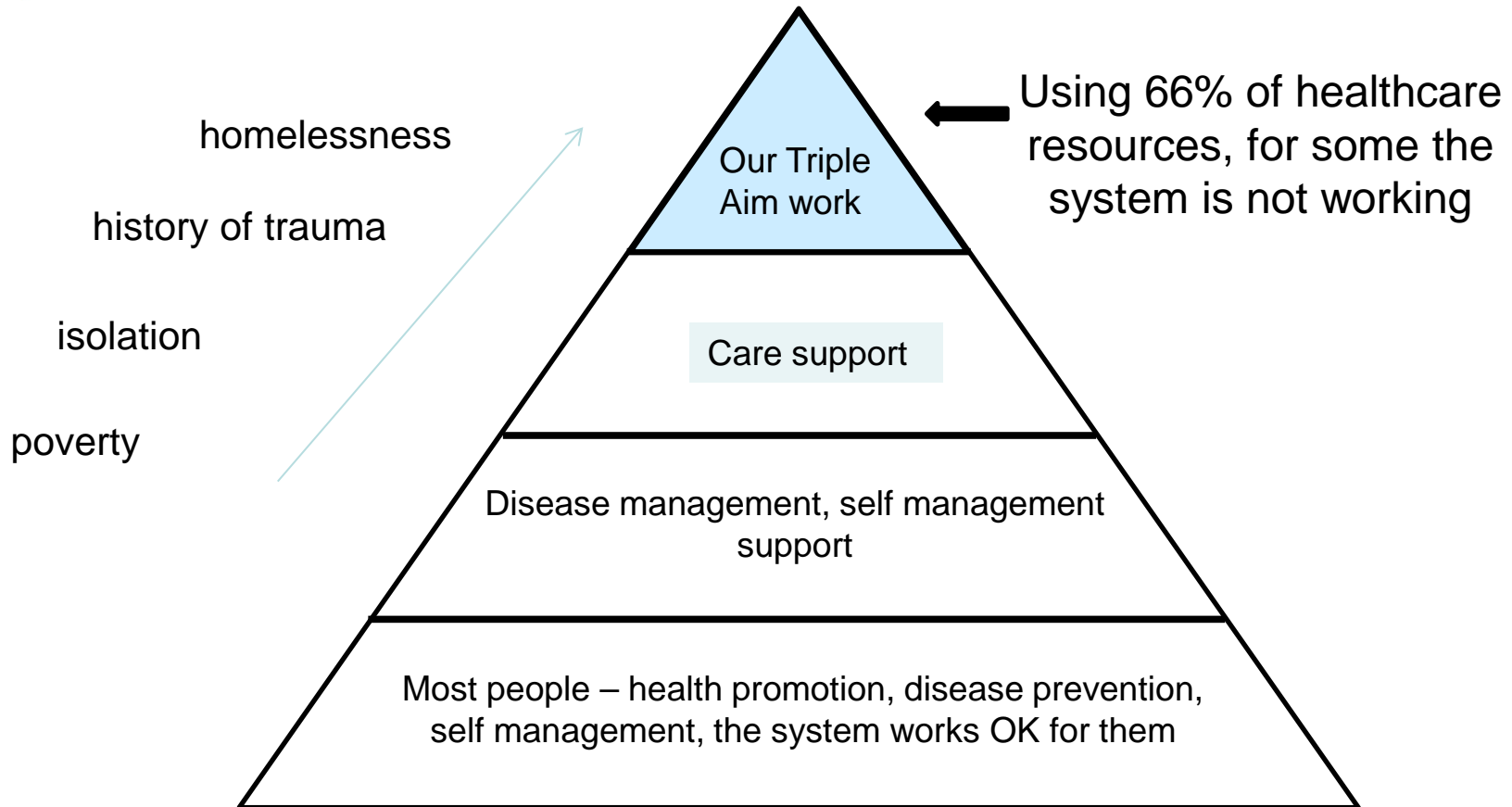
Primary Care & Chronic Disease Management

Edmonton

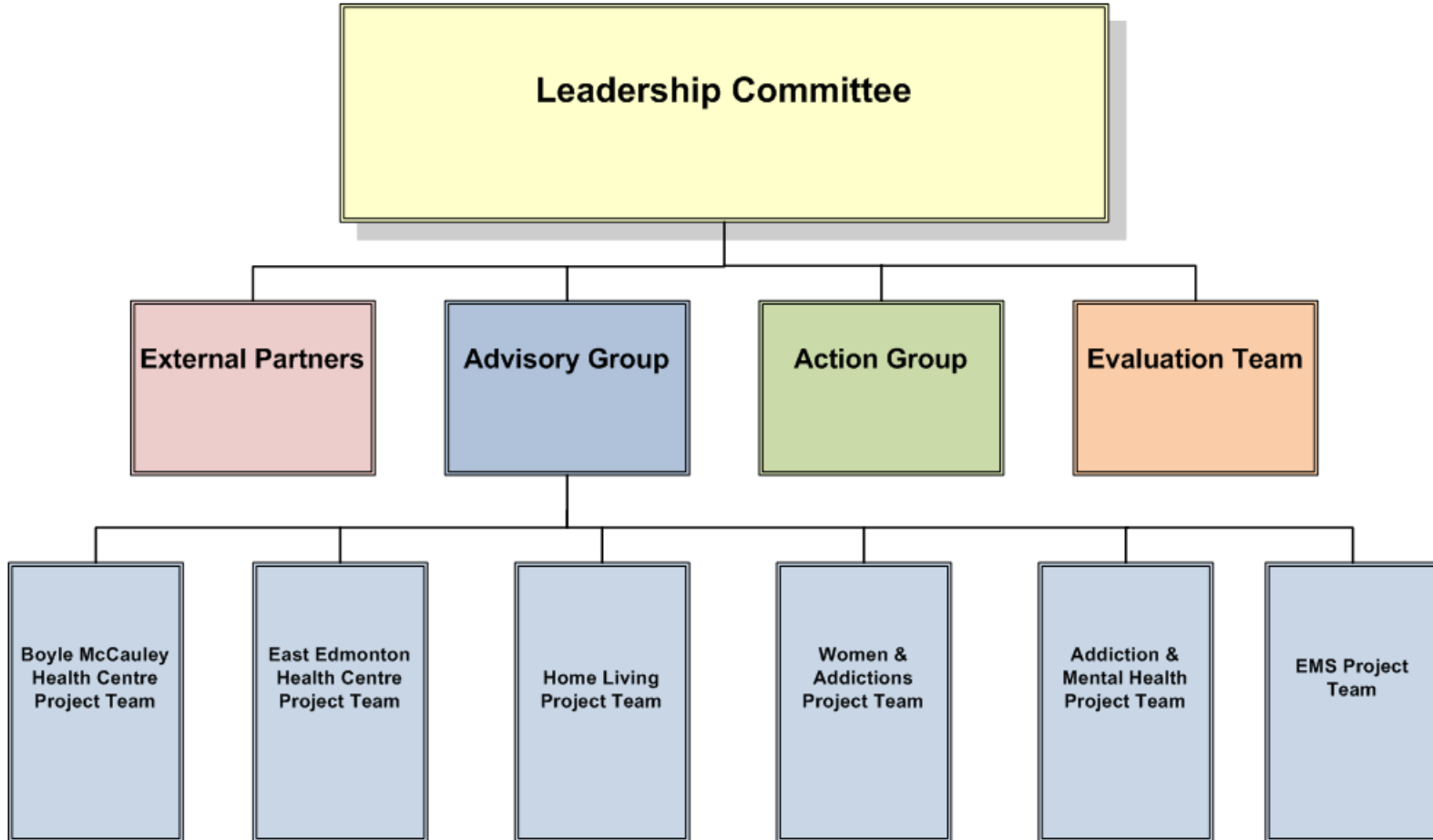
Crispin.Kontz@ahs.ca

Merck Canada via Alberta Innovates Health Solutions is funding evaluation of
Triple Aim in Edmonton

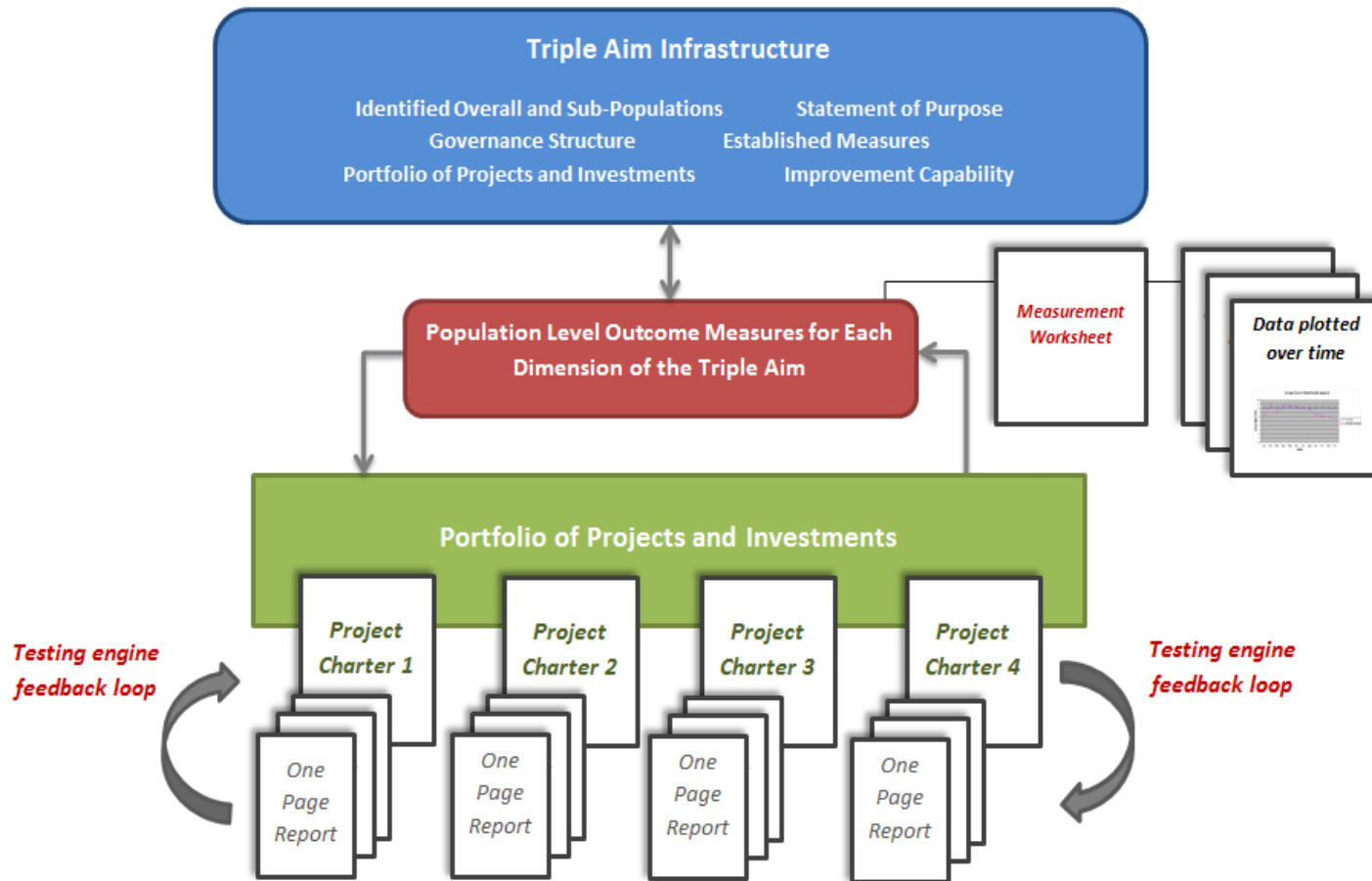
Health Services for a Population



Triple Aim Organizational Chart



Learning for Success: Triple Aim Learning System



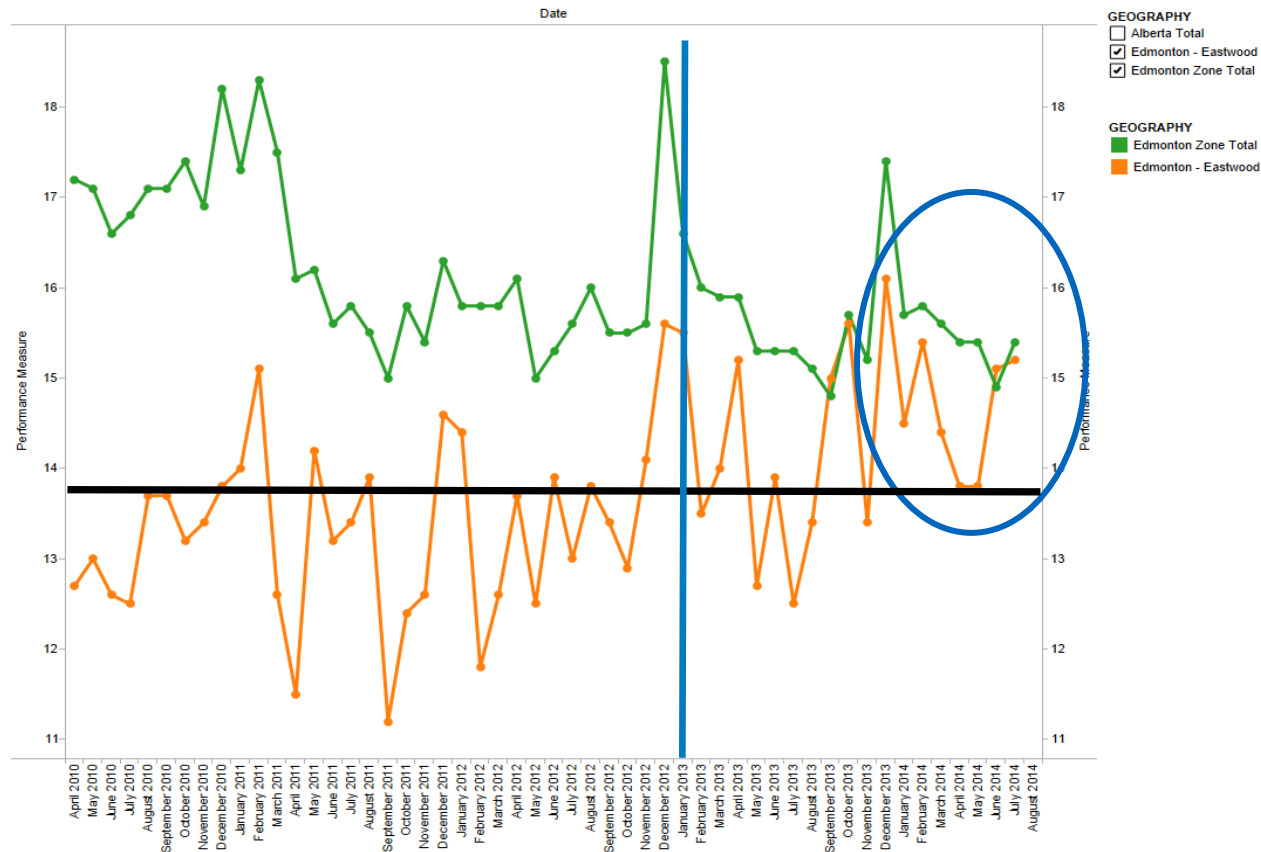
Population Level Data

Family Practice Sensitive Conditions

Triple AIM: Edmonton Eastwood Performance Measures - Geography Comparison

DIMR: Edmonton Zone Analytics

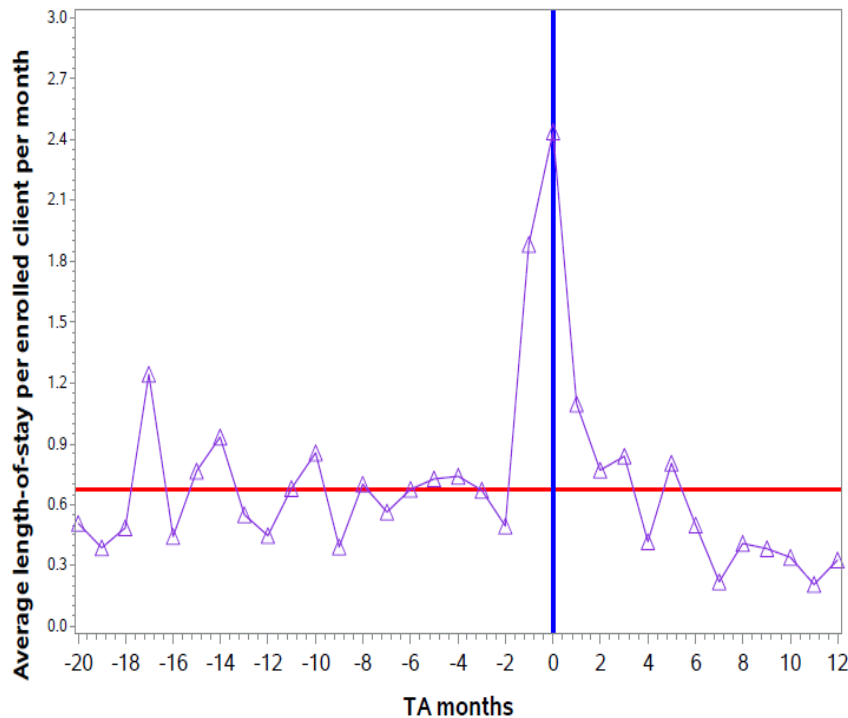
Performance Measure
% FPSC Visits to ED



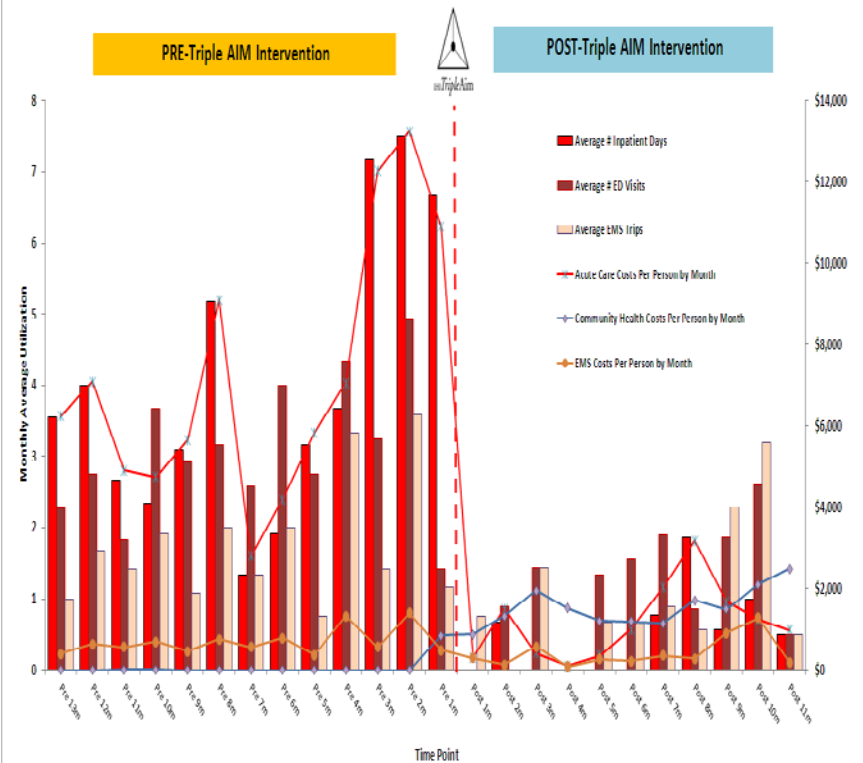
Project Level Data

Inpatient lengths of stay, before and after Triple Aim

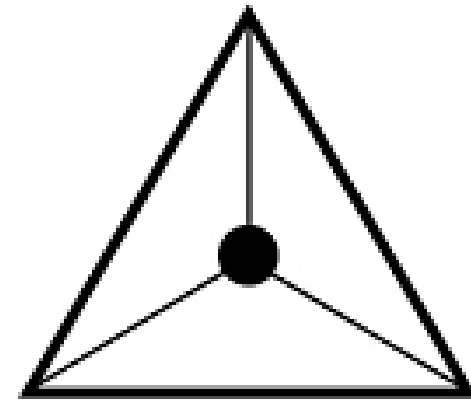
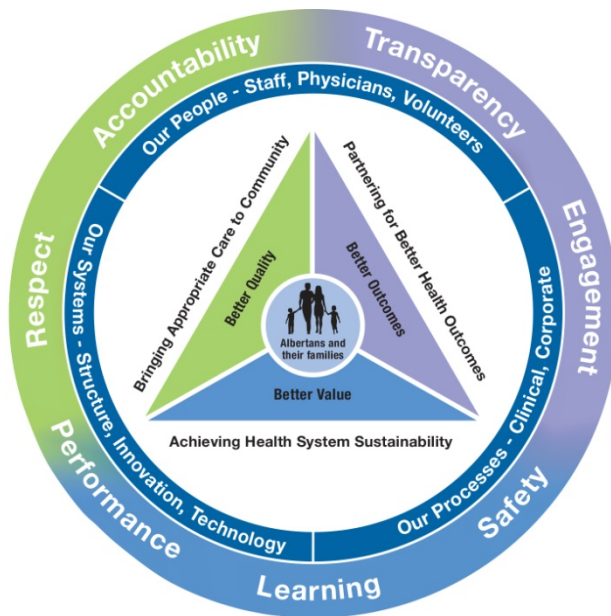
Hospital utilization of Triple Aim clients (1778)



Triple Aim Addictions, Mental Health and Home Care Teams
Sample of 12 Clients, Average Monthly Costs for Acute Care, EMS and Community Utilization



Congruence of Priorities



IHI *Triple Aim*

Clarence's Story

RAH ARCH
Home Care
System Case
Manager
Contracted
Services
NP
OT

Shelter
Long term
housing
Harm reduction
Incontinence
Foot pain
Support sobriety
Walker

What made a difference to you?

“having a home, keeps me off the streets and I am able to eat- I guess I am healthier and I am not drinking”.



Work that's from the Heart

