

## ELOCTATE™ Reconstitution

**\*\*\* IMPORTANT \*\*\***

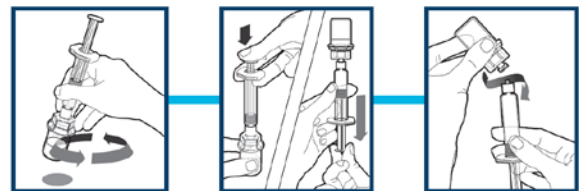
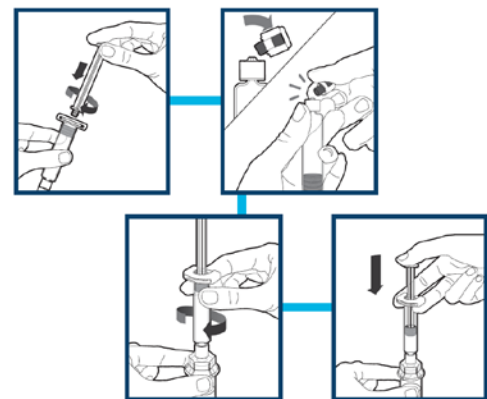
Aseptic techniques must be used at all times. Use the diluent supplied in the package.

### PREPARATION

- If refrigerated, allow ELOCTATE and diluent-filled syringe to come to room temperature (15°C to 30°C)
- Check expiry dates
- Wash your hands and ensure the area is clean
- **ENSURE YOU HAVE EVERYTHING YOU NEED FOR YOUR DOSE:**  
ELOCTATE vials — Diluent pre-filled syringes — Vial adapters — Alcohol wipes — Infusion needle set — Tourniquet — Cotton wipe — Luer-lock syringe (if needed for doses of more than one vial)

### RECONSTITUTION

- Remove plastic cap from ELOCTATE vial
- Wipe top of the vial with alcohol swab; allow to dry
- Peel lid back on vial adapter package
- On a flat surface, place adapter over ELOCTATE vial and push down, so that the spike punctures centre of the rubber stopper on the vial
- Only use the diluent syringe provided in the ELOCTATE package
- Attach plunger rod to diluent syringe by inserting the rod into the syringe and turning clockwise
- Hold syringe with cap pointing up; snap off cap with other hand
- Turn syringe down; insert tip into adapter opening on vial; turn clockwise to attach
- Slowly push down plunger of syringe to inject the diluent into the vial
- Swirl vial gently to dissolve the product; do not shake
- Do not use the reconstituted ELOCTATE if it is cloudy or contains visible particles
- Turn vial upside down, slowly pull plunger rod to draw solution into syringe
- Unscrew the syringe from the vial adapter
- Infuse your ELOCTATE as instructed by your hemophilia clinic team



### Need more than one vial for each dose?

- Prepare all vials and diluent syringes needed for your dose
- Remove diluent syringes from each vial
- Use a separate luer-lock syringe to draw out the dose from each vial
- Infuse your ELOCTATE as instructed by your hemophilia clinic team

Discard  
all materials safely.  
Record your infusion  
in your calendar/log.  
**ALWAYS** call your  
clinic about any bleed.

**NOTE:** The pre-filled glass syringe with diluent used to reconstitute and administer product **may not be compatible with all needless connectors for intravenous catheters** (e.g. ICU Medical MicroClave® Neutral Connector). You may need to withdraw reconstituted product into a sterile 10 mL plastic syringe with a standard luer-lock connector.

**COMMENTS:**

Date Effective: 25 Feb 2016

Revised Date: N/A

Version: 1.0

Approved By: TM Network

Document Number: PTMRGN00016

References: ELOCTATE™ Product TearSheet; [www.biogen.ca](http://www.biogen.ca)

*For questions or comments about this document, please contact [Transfusion.SafetyTeam@albertahealthservices.ca](mailto:Transfusion.SafetyTeam@albertahealthservices.ca)*