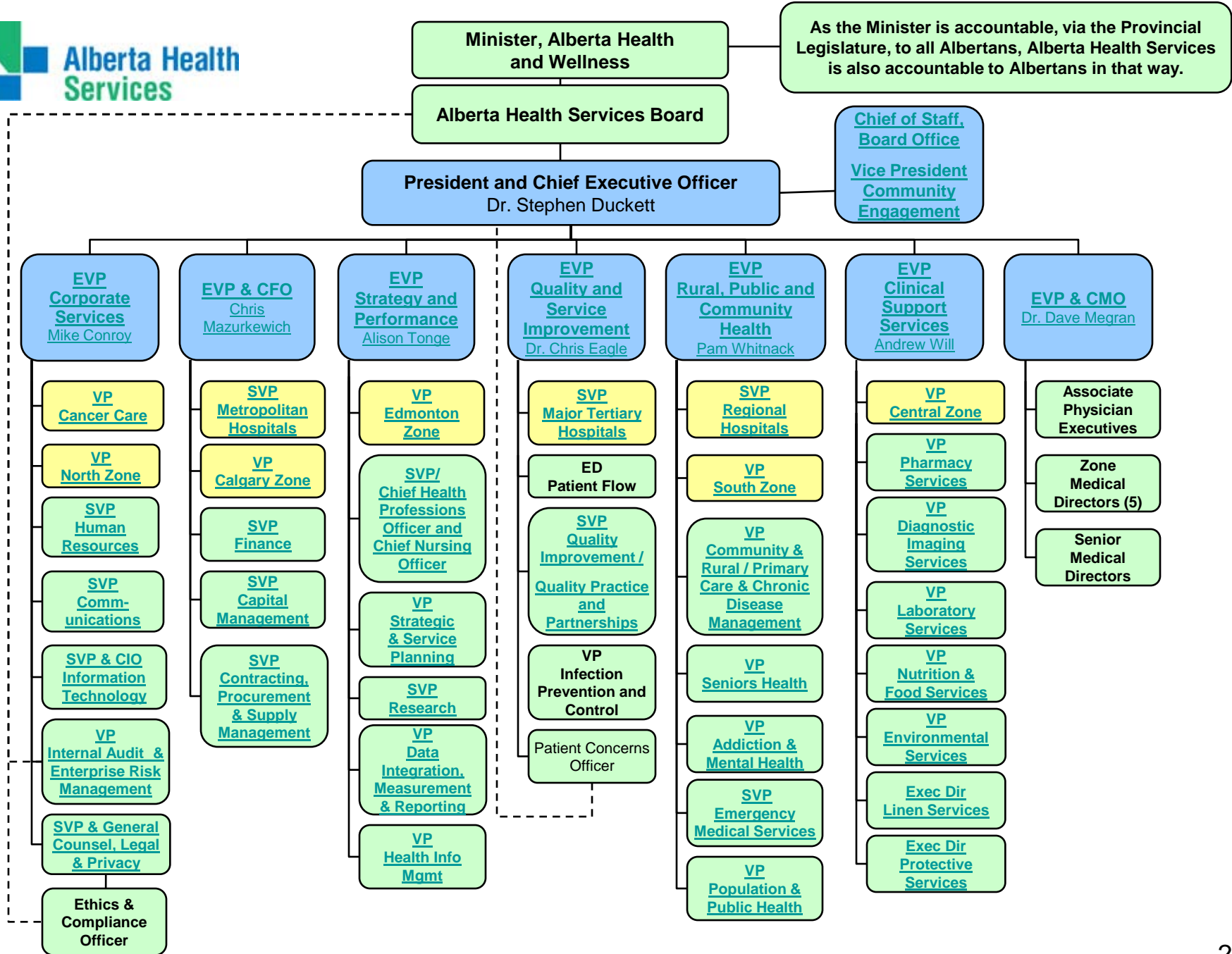


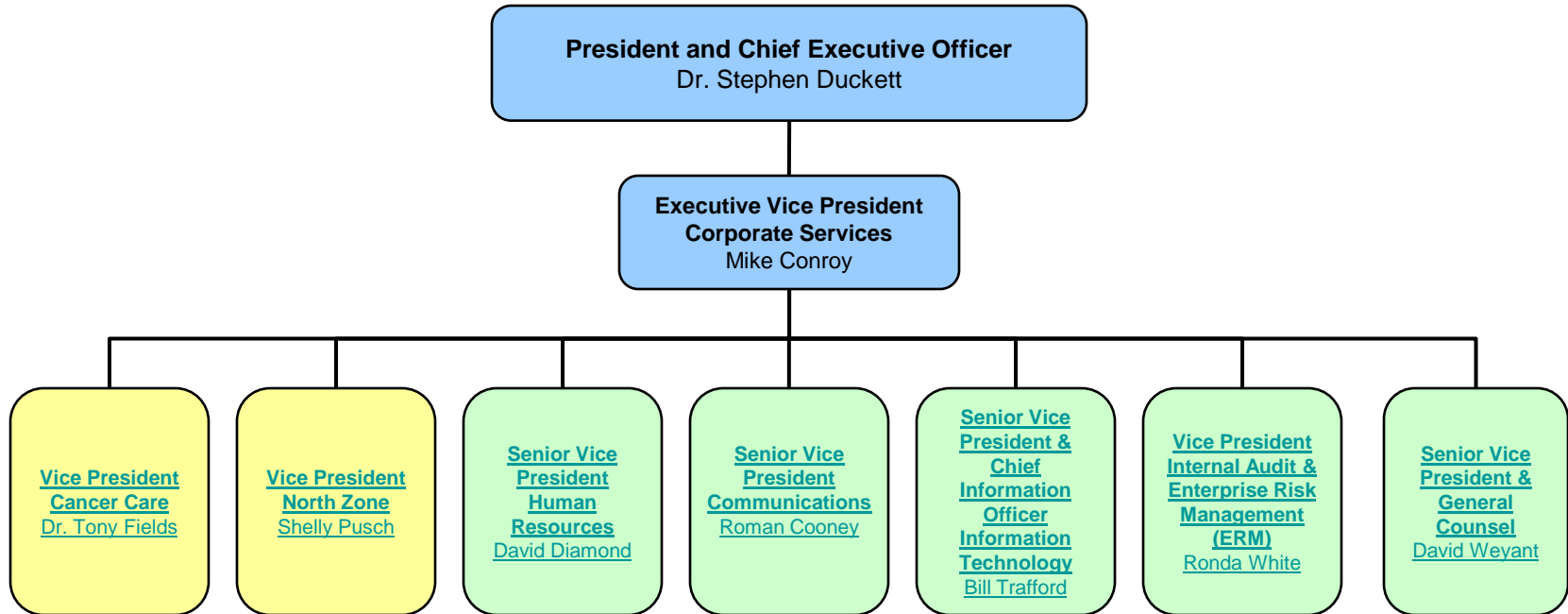
Organizational structure

Updated: August 12, 2010

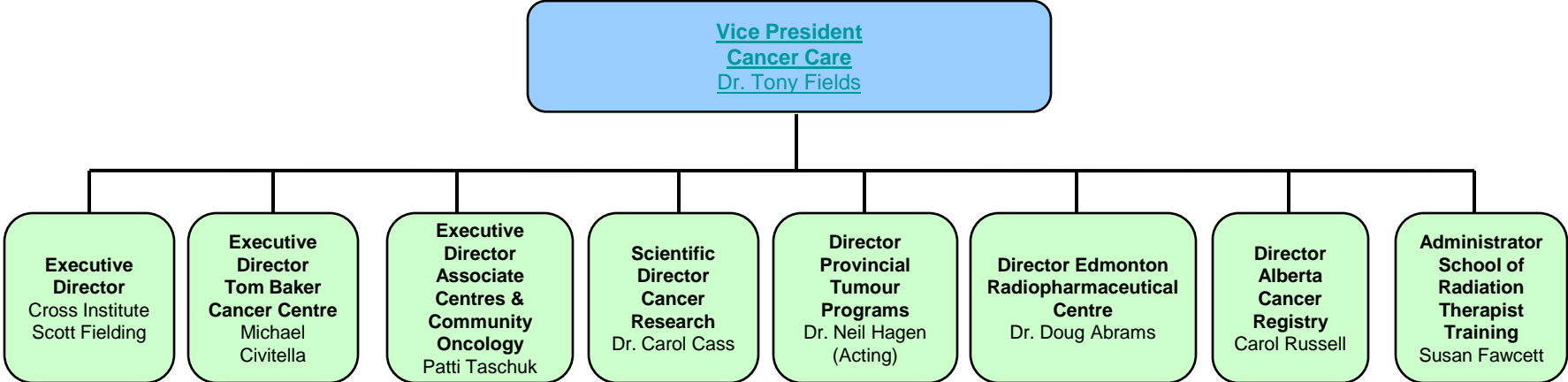
To navigate to subsequent levels of the chart, click on the boxes throughout this document



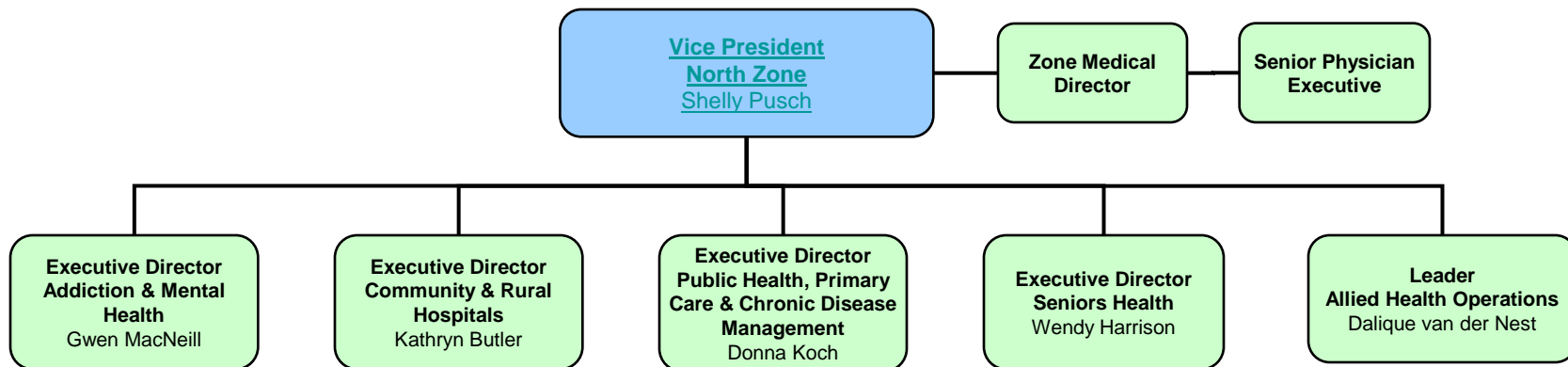
As the Minister is accountable, via the Provincial Legislature, to all Albertans, Alberta Health Services is also accountable to Albertans in that way.



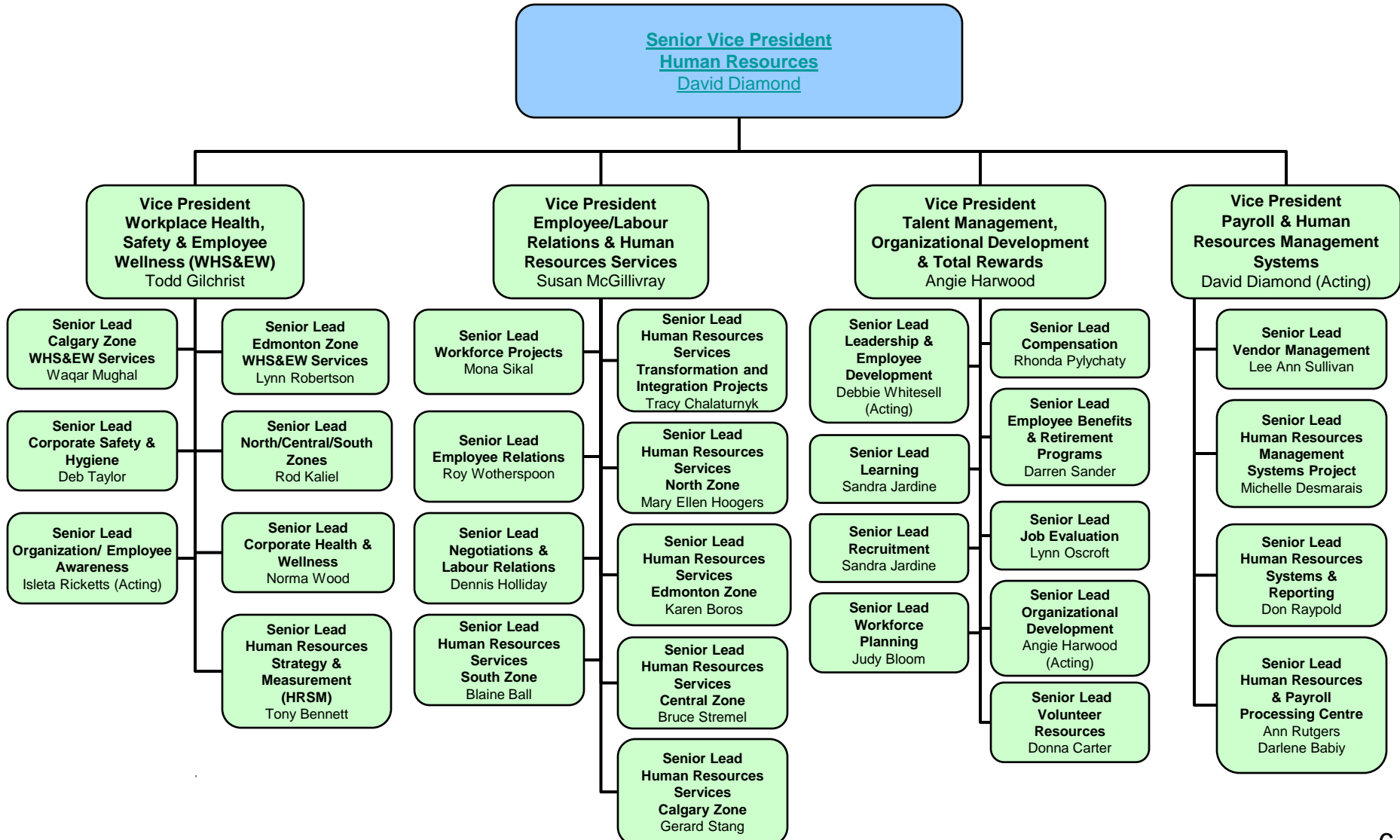
Cancer Care



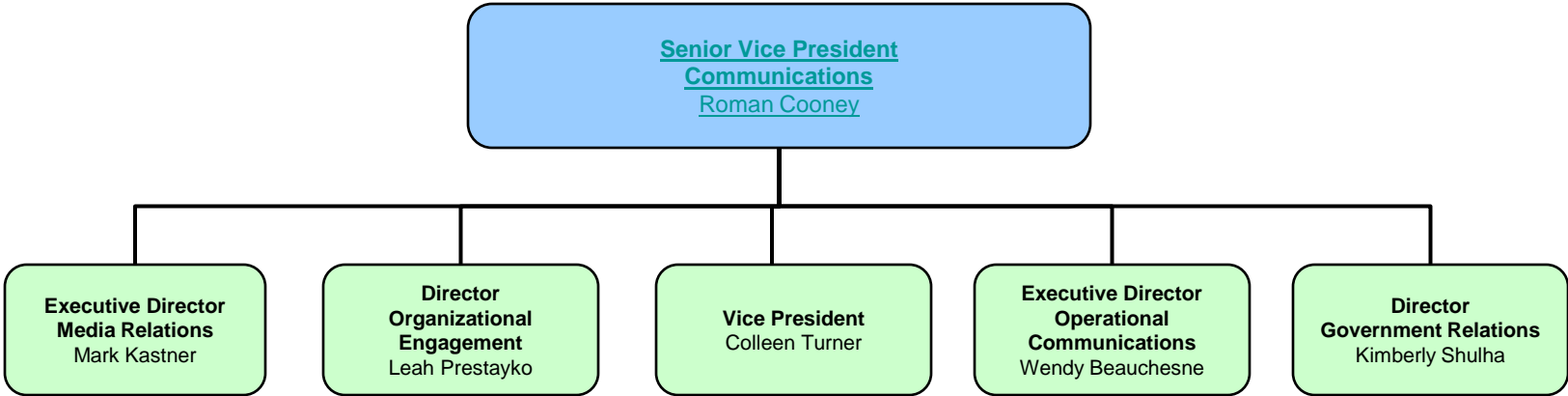
North Zone

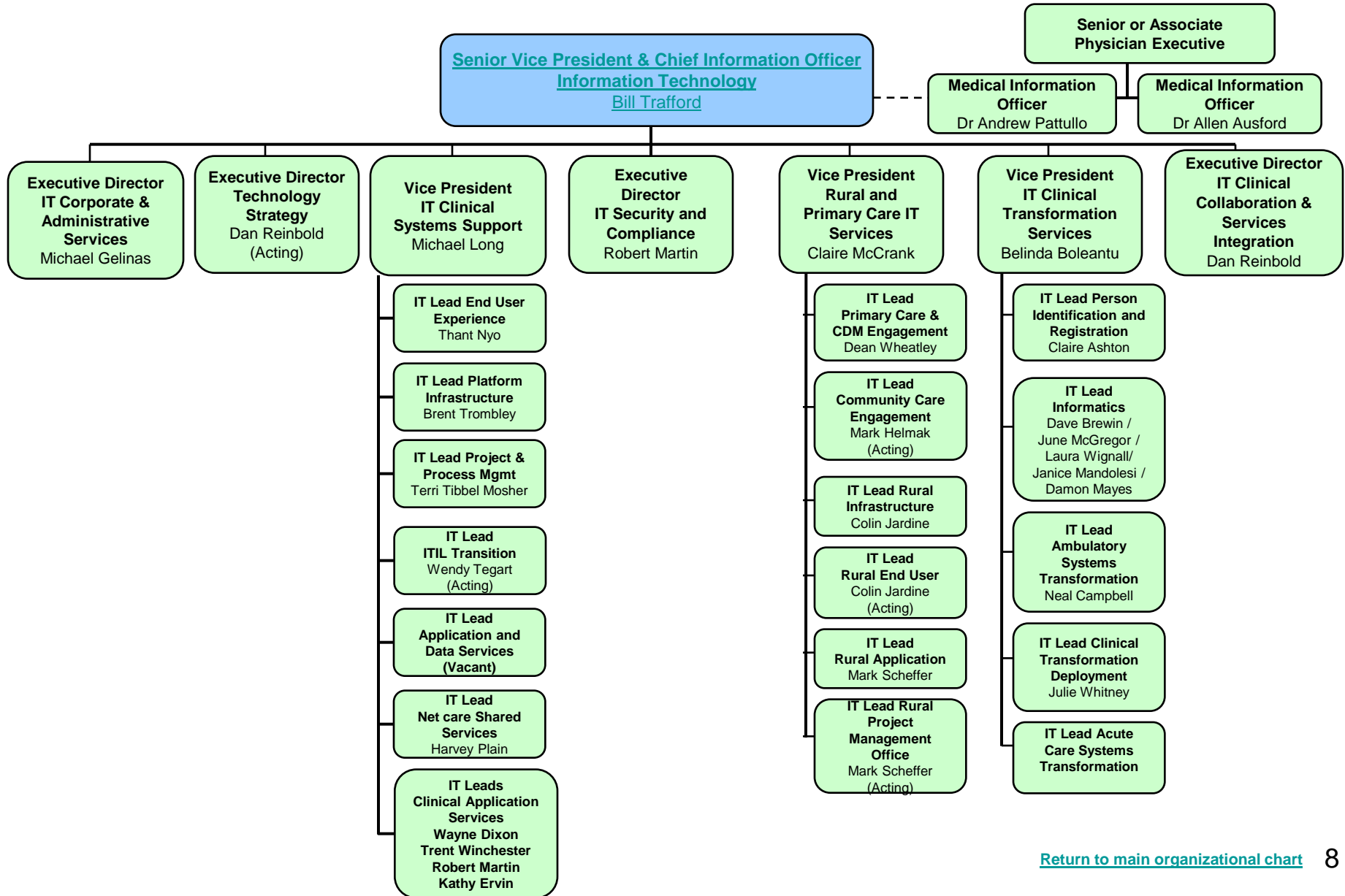


Human Resources

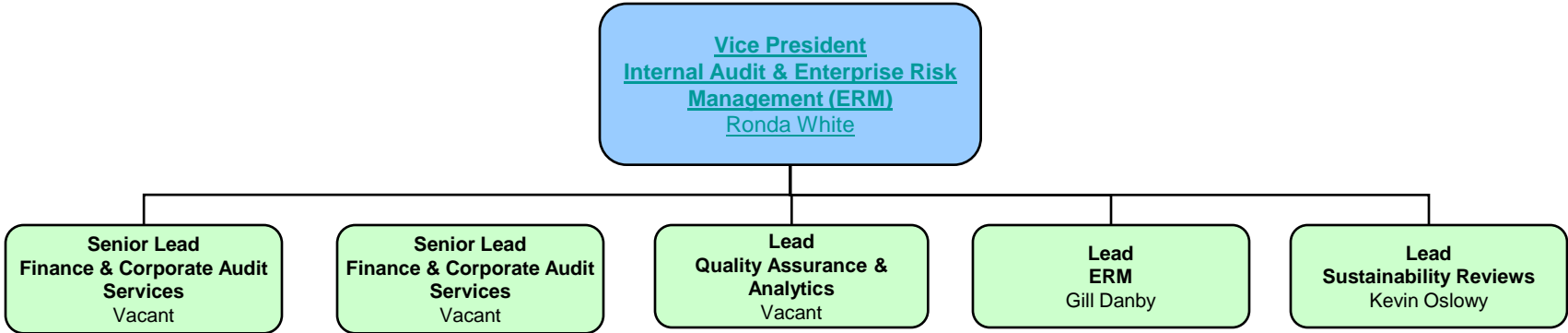


Communications

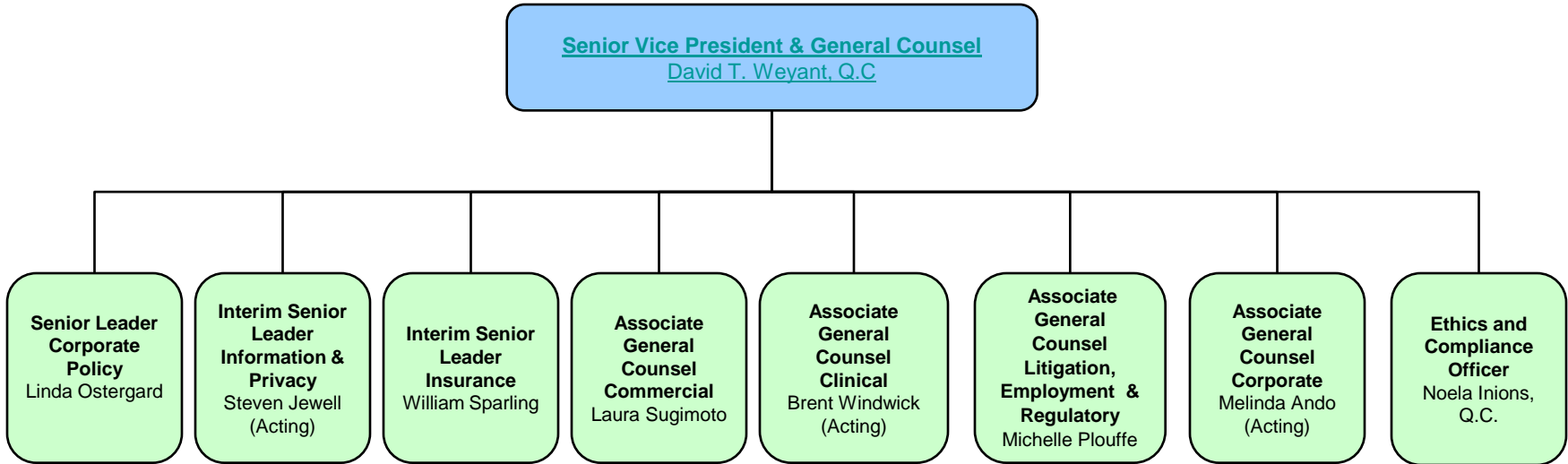




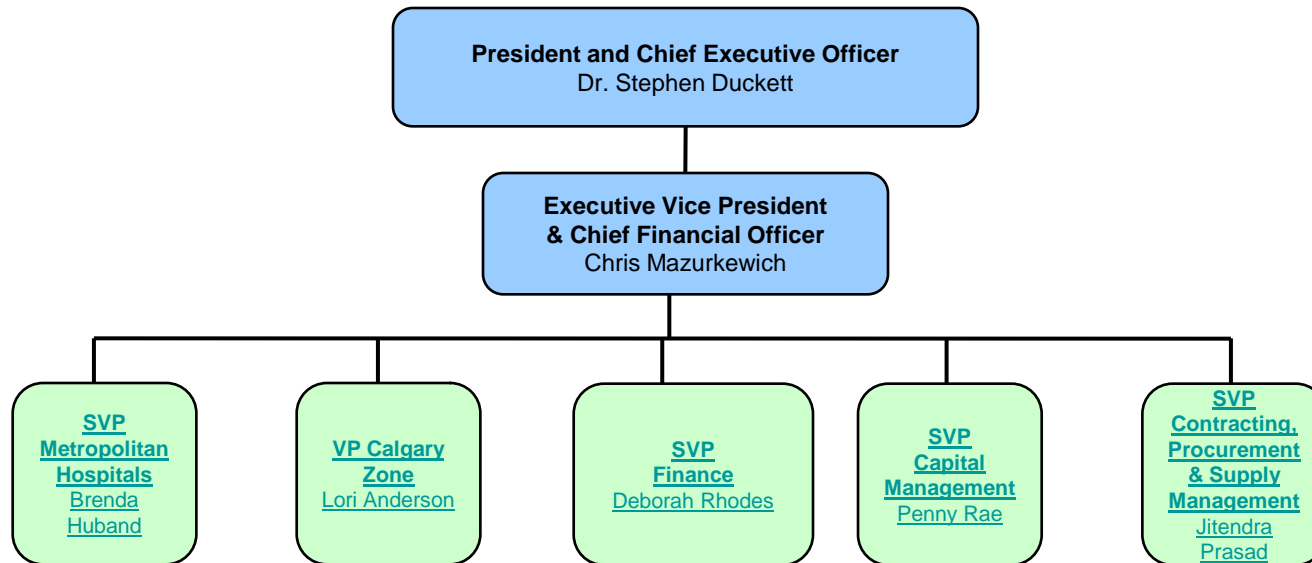
**Internal Audit & Enterprise
Risk Management (ERM)**



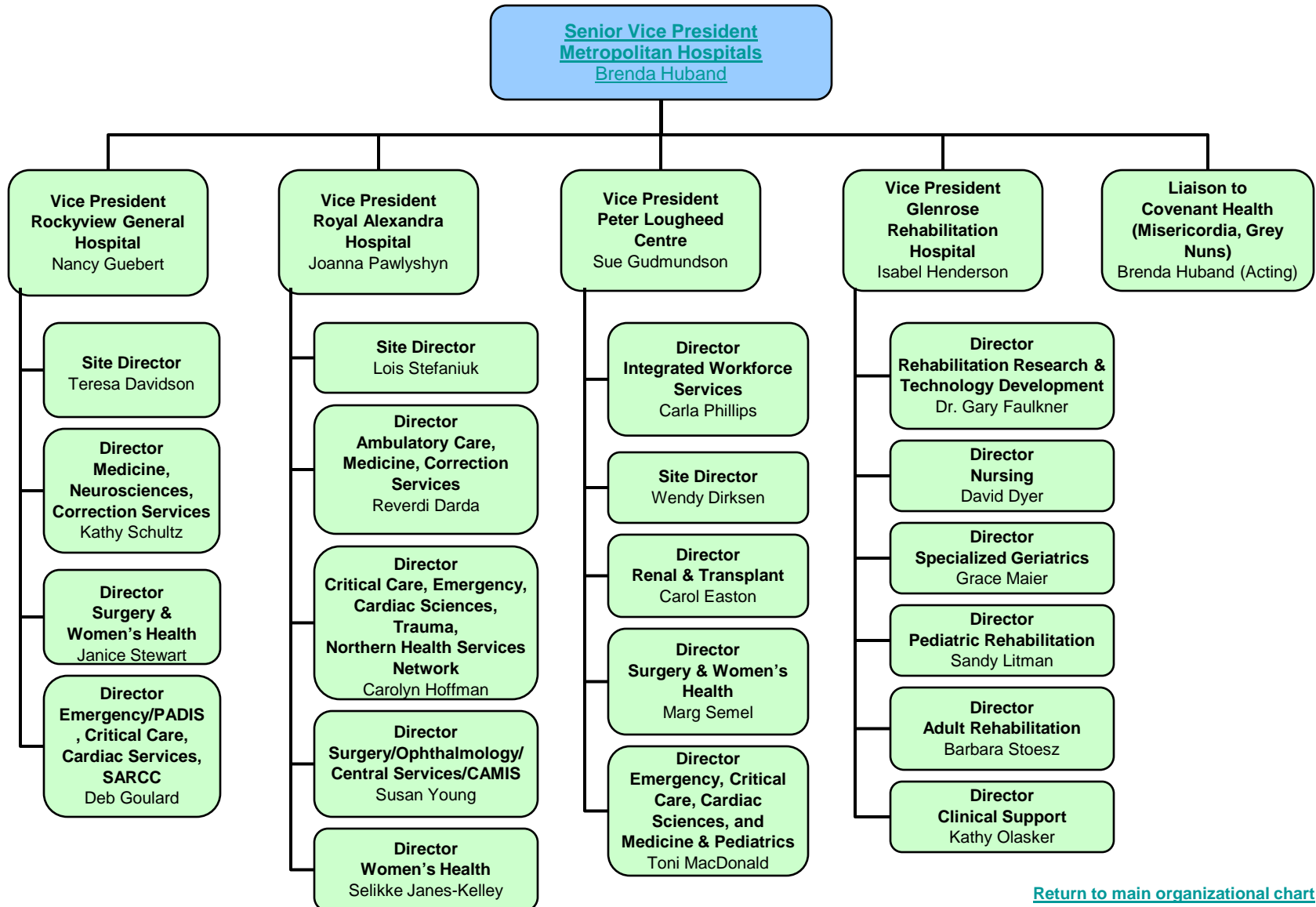
Legal & Privacy



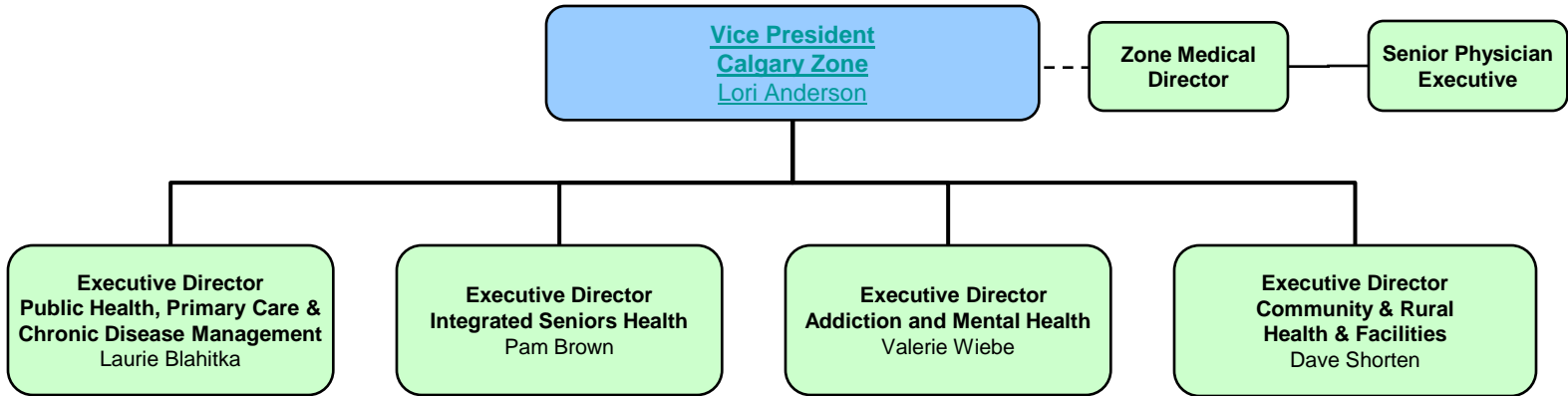
Executive Vice President & Chief Financial Officer



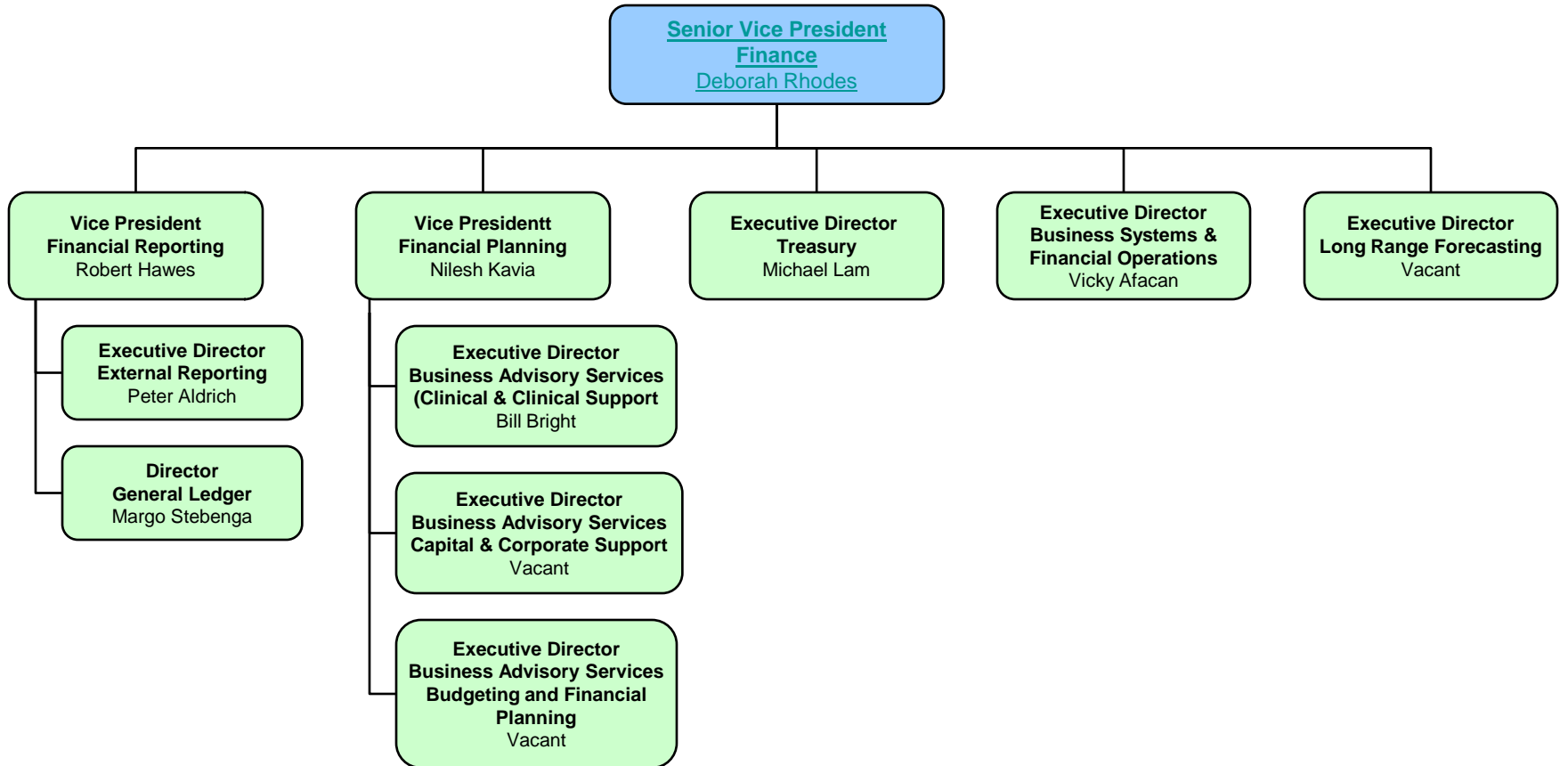
Metropolitan Hospitals

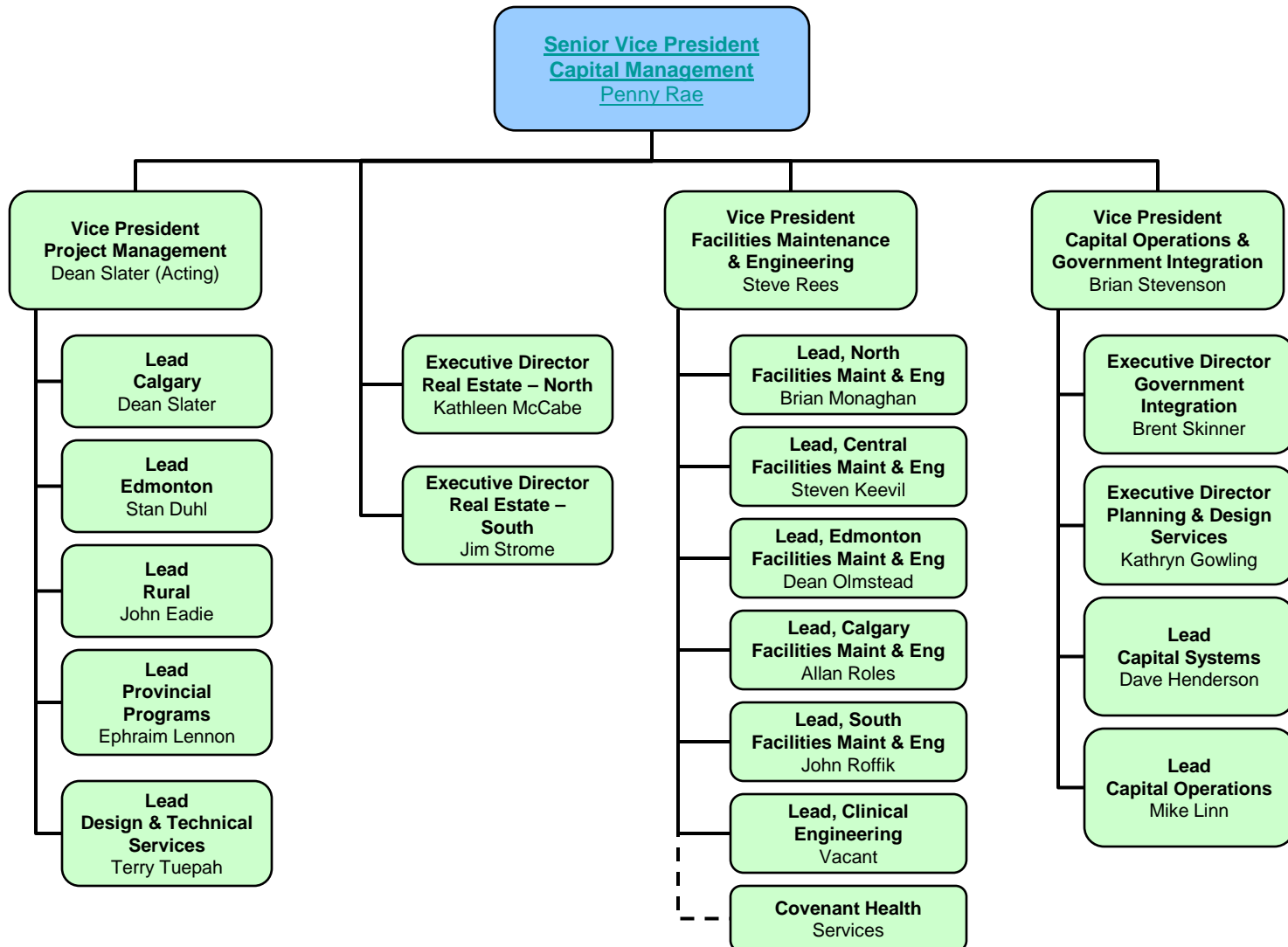


Calgary Zone

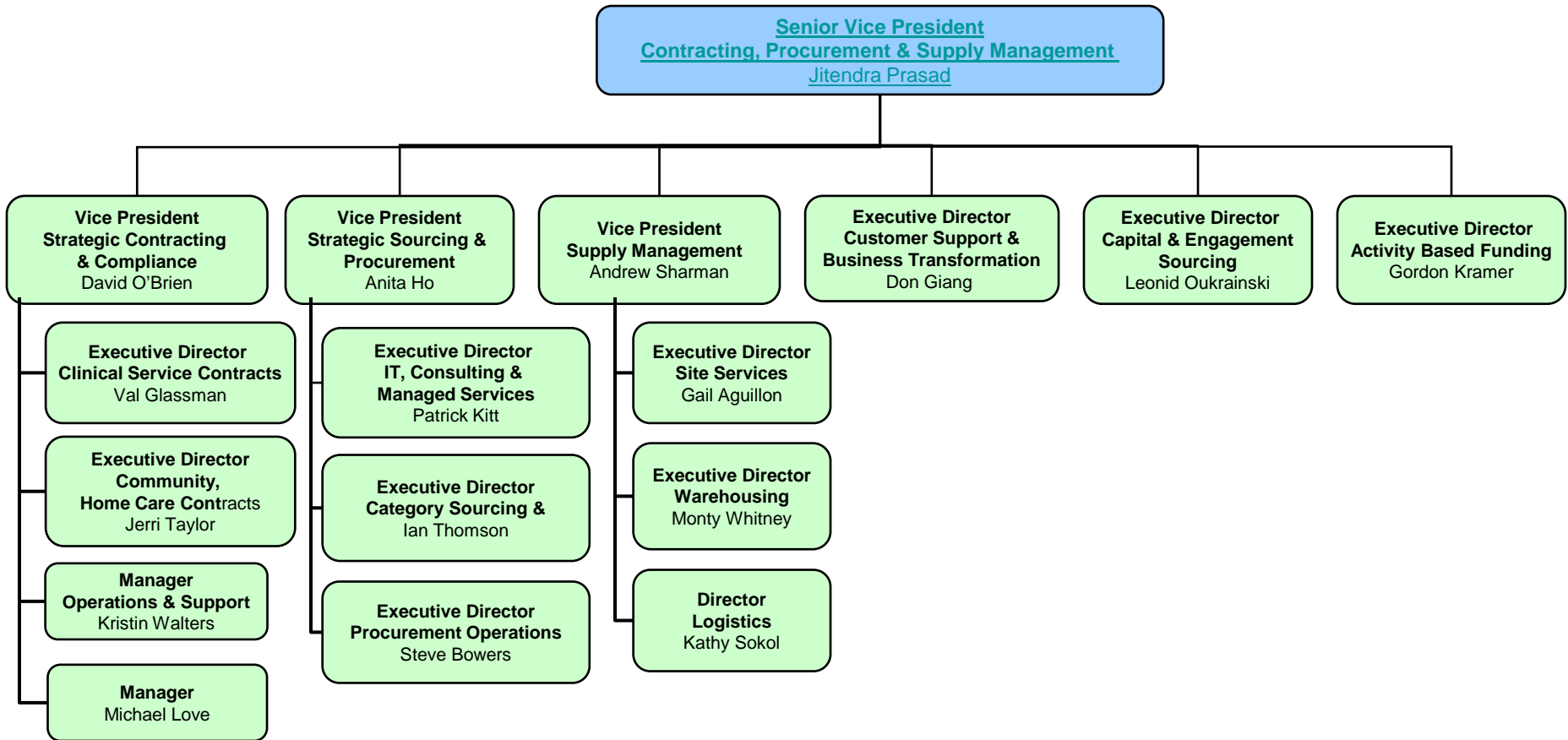


Finance

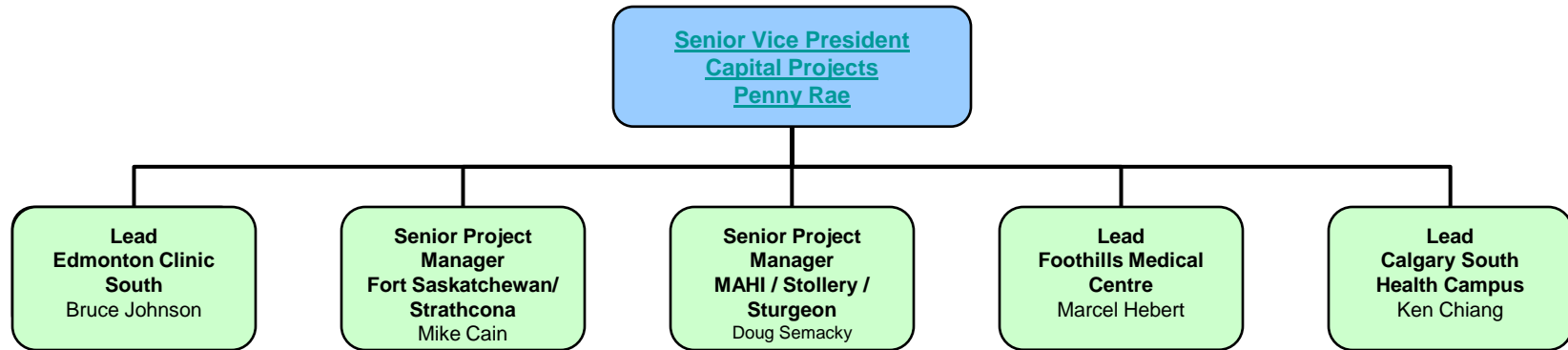


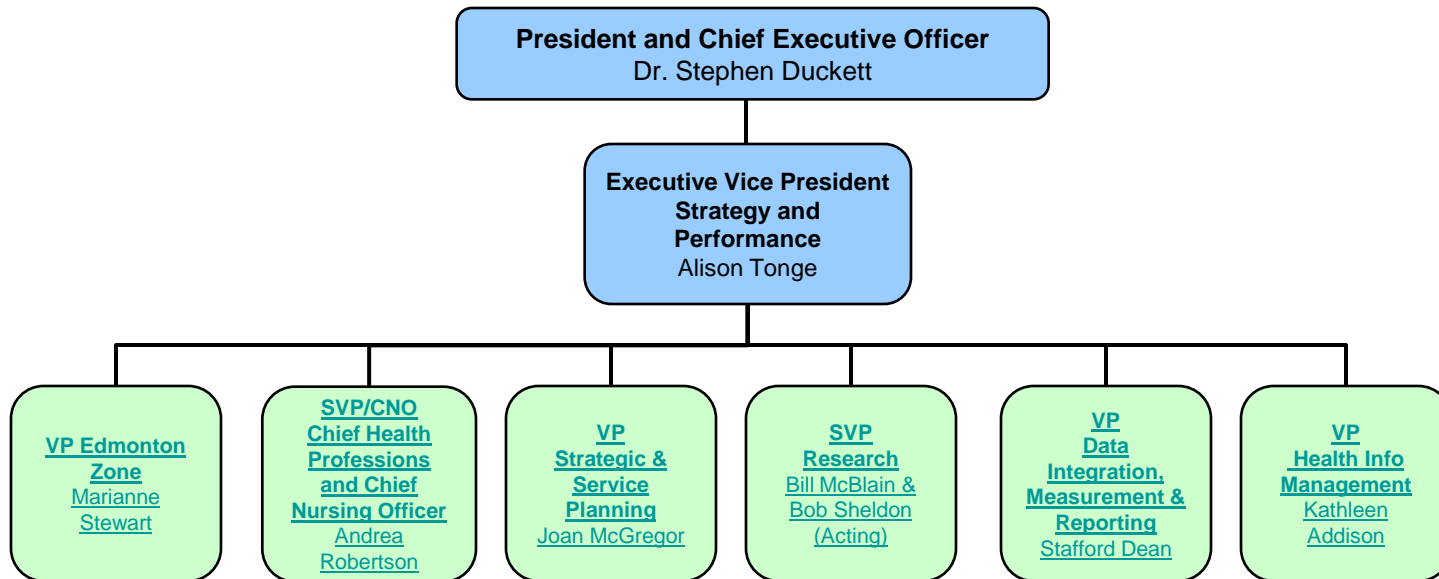


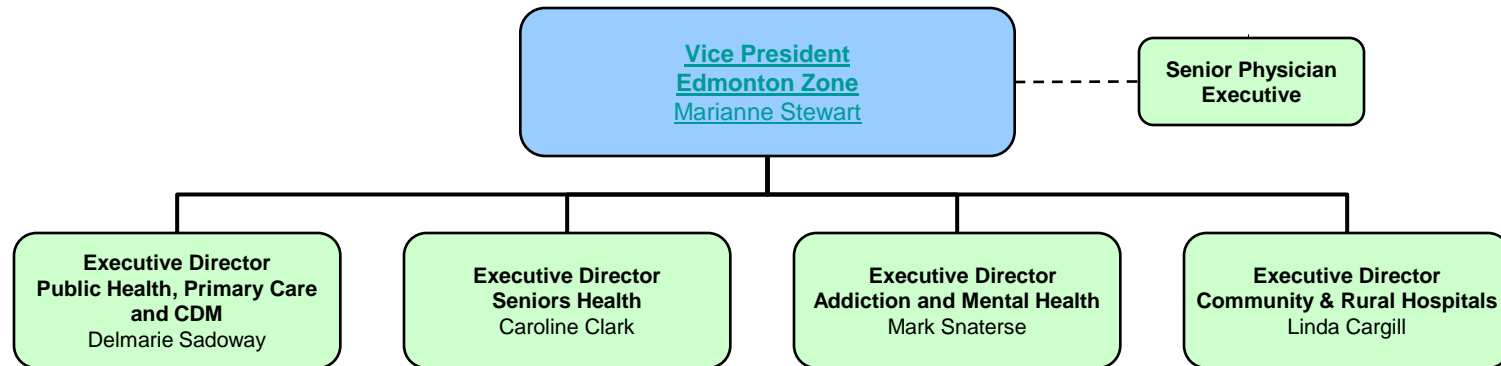
Contracting, Procurement & Supply Management

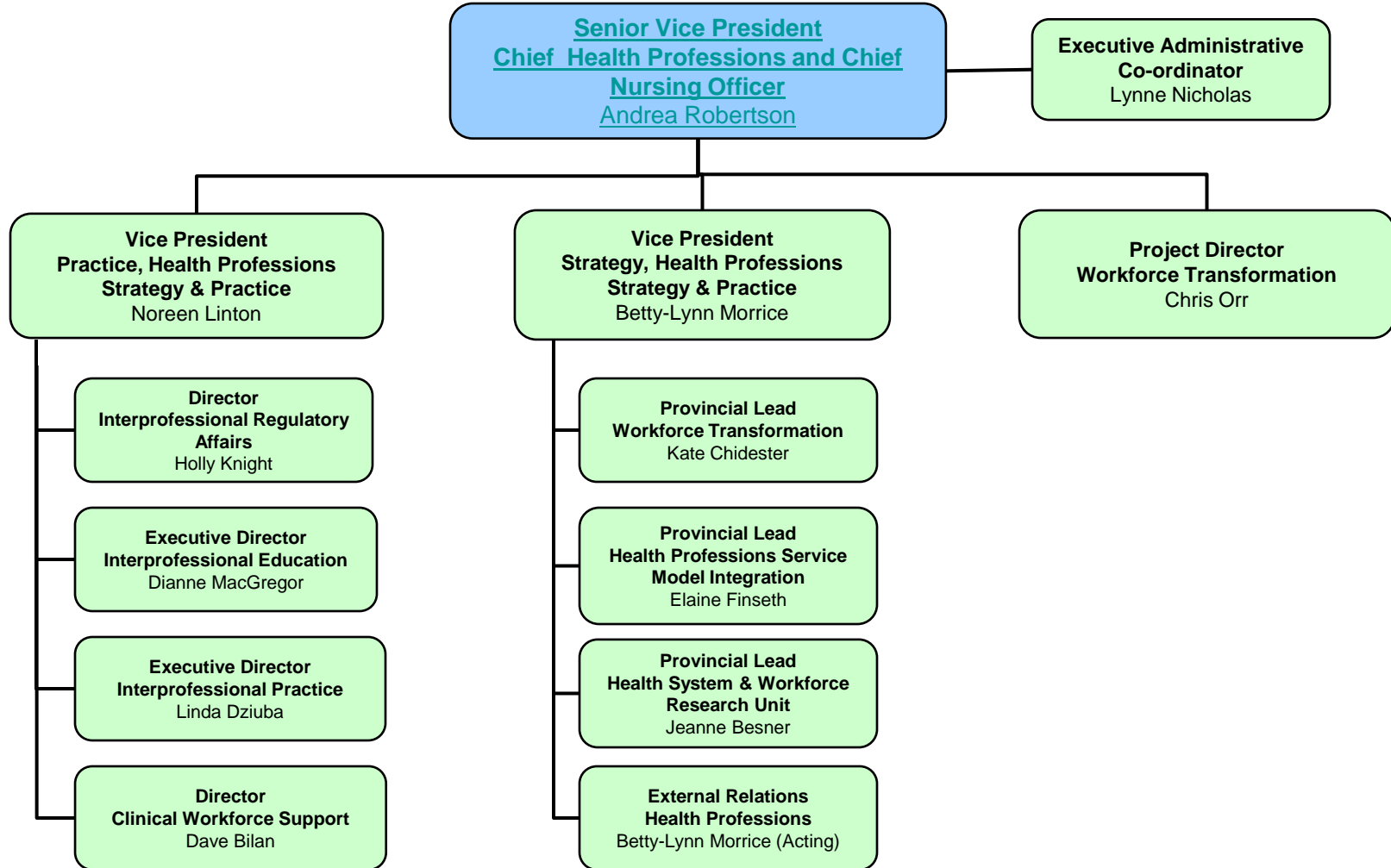


Major Capital Projects

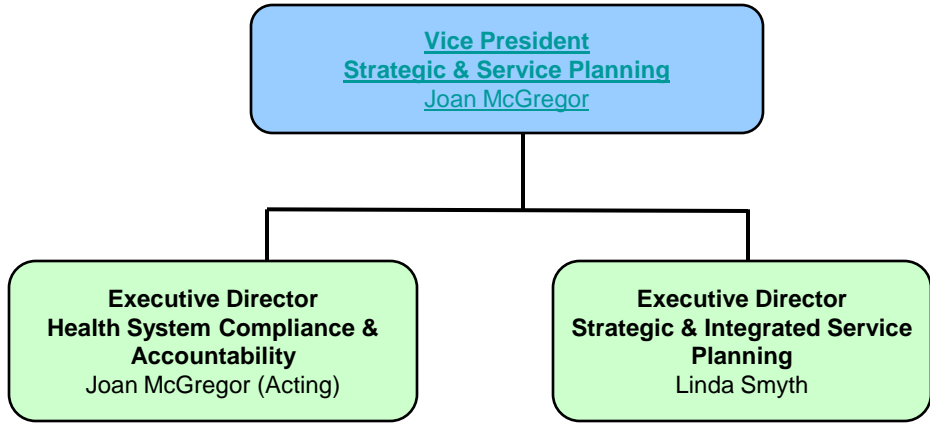




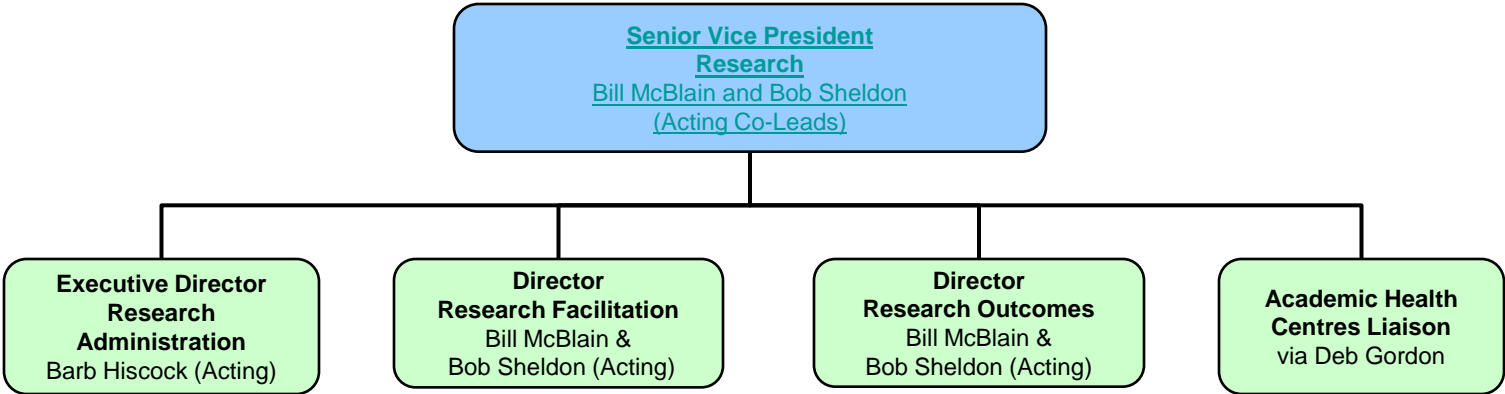




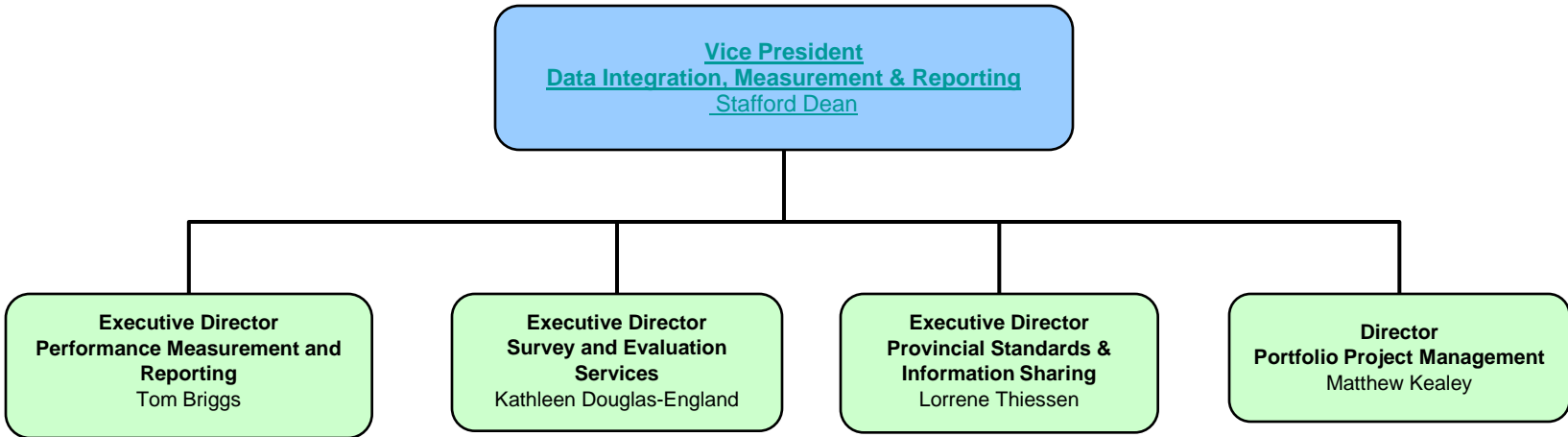
Strategic & Service Planning



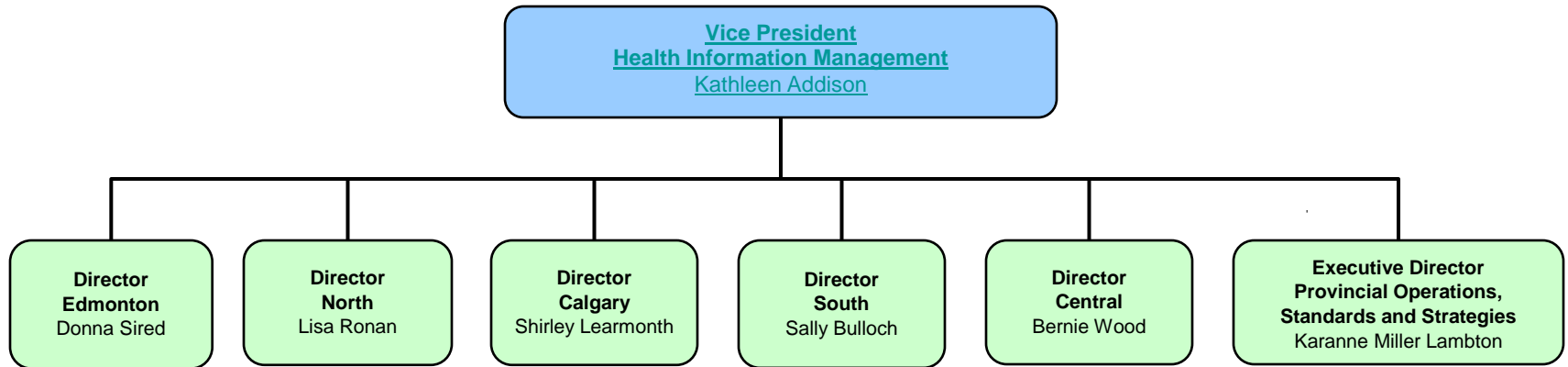
Research



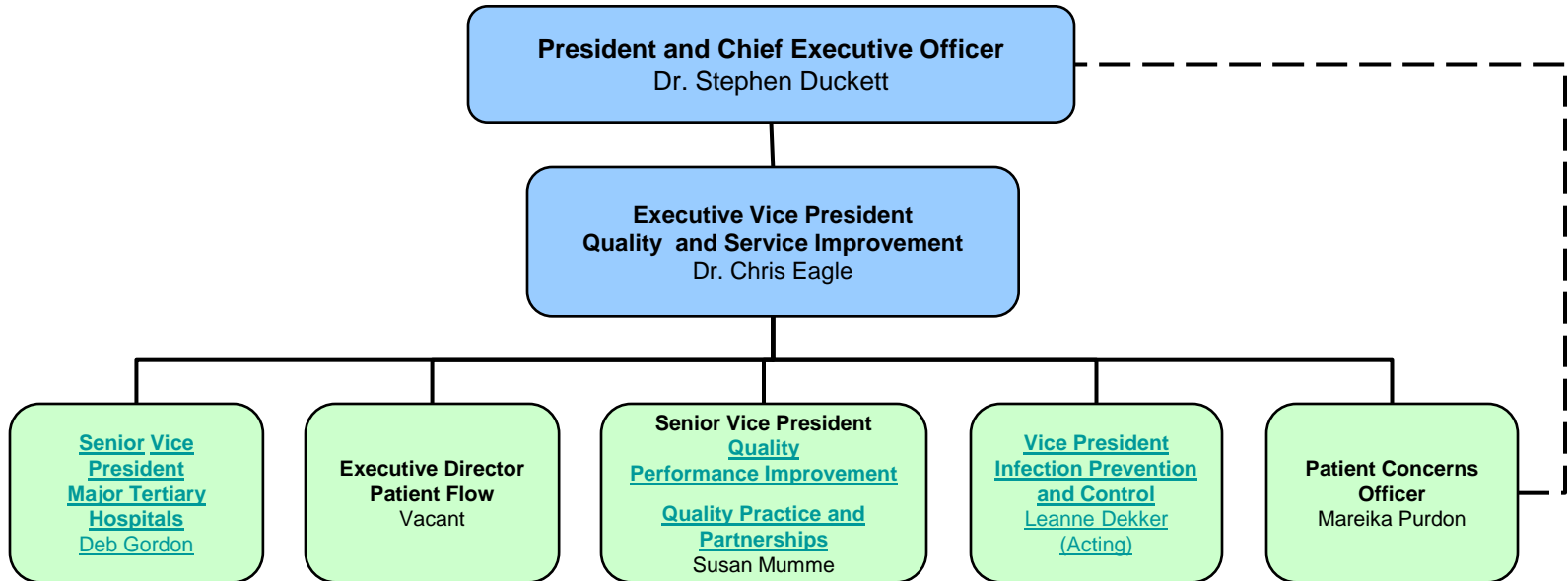
**Data Integration,
Measurement & Reporting**

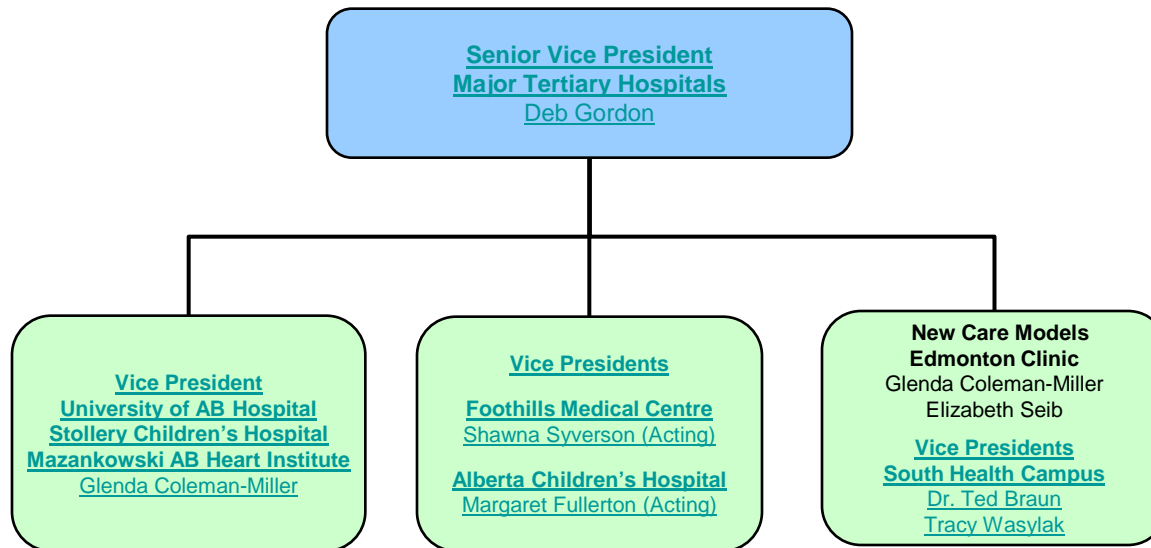


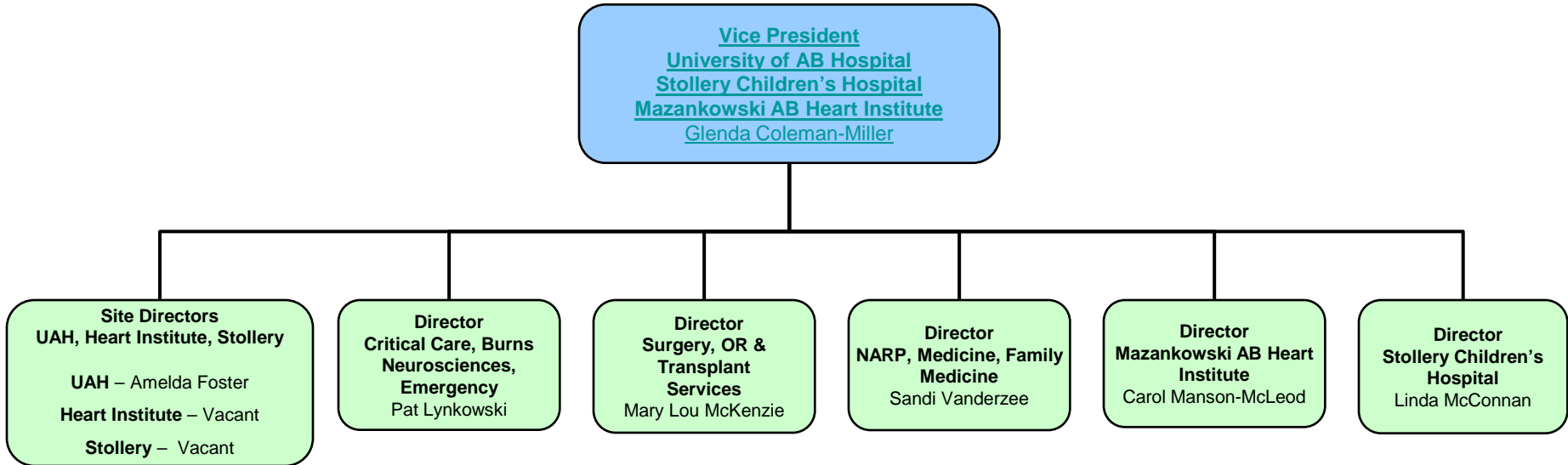
Health Information Management

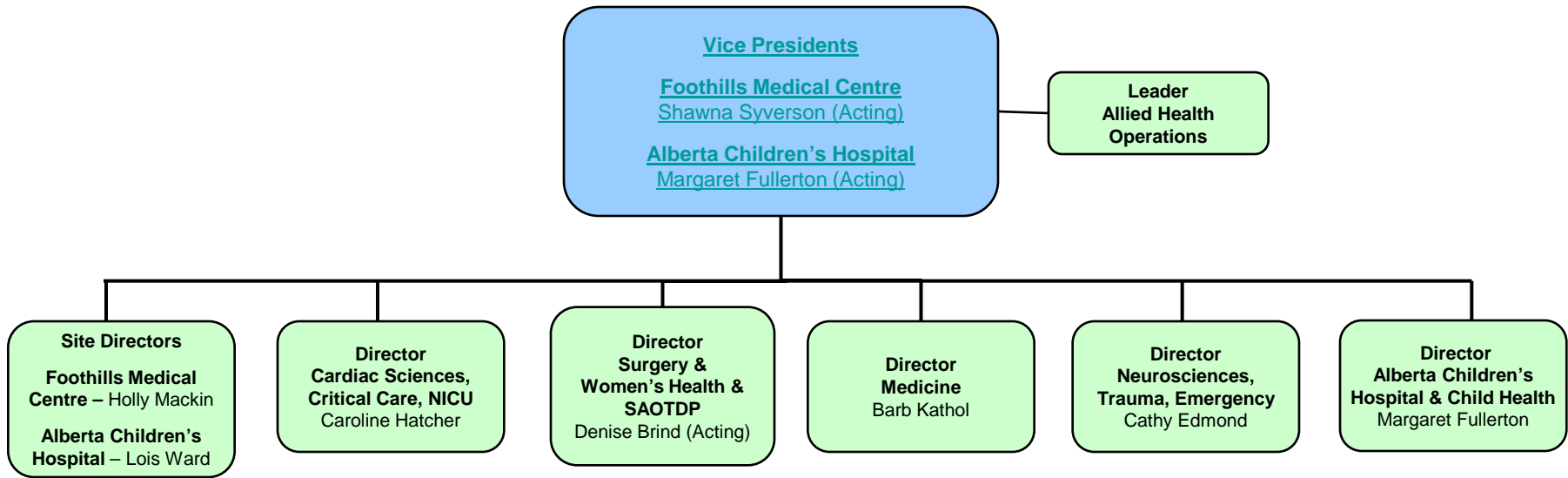


Quality and Service Improvement

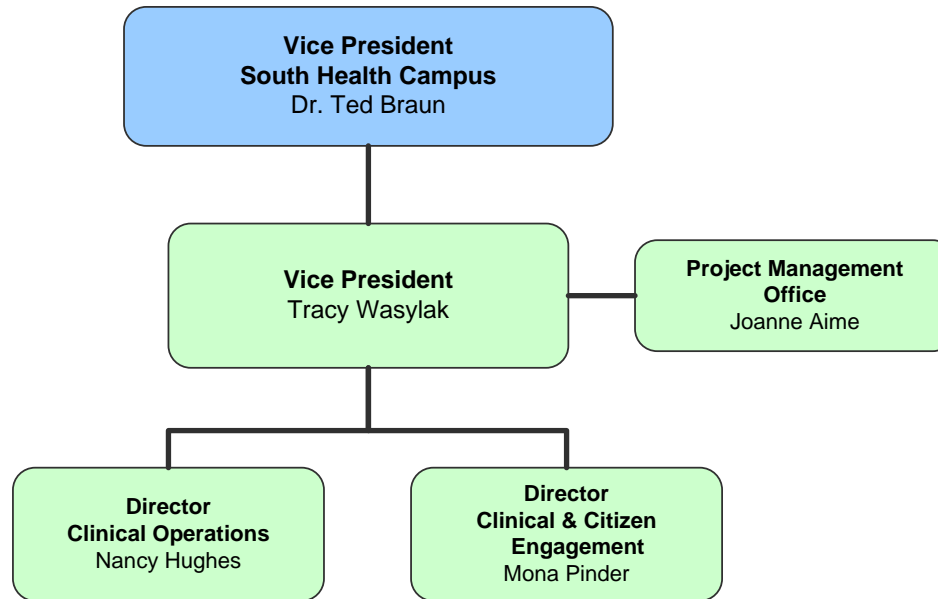




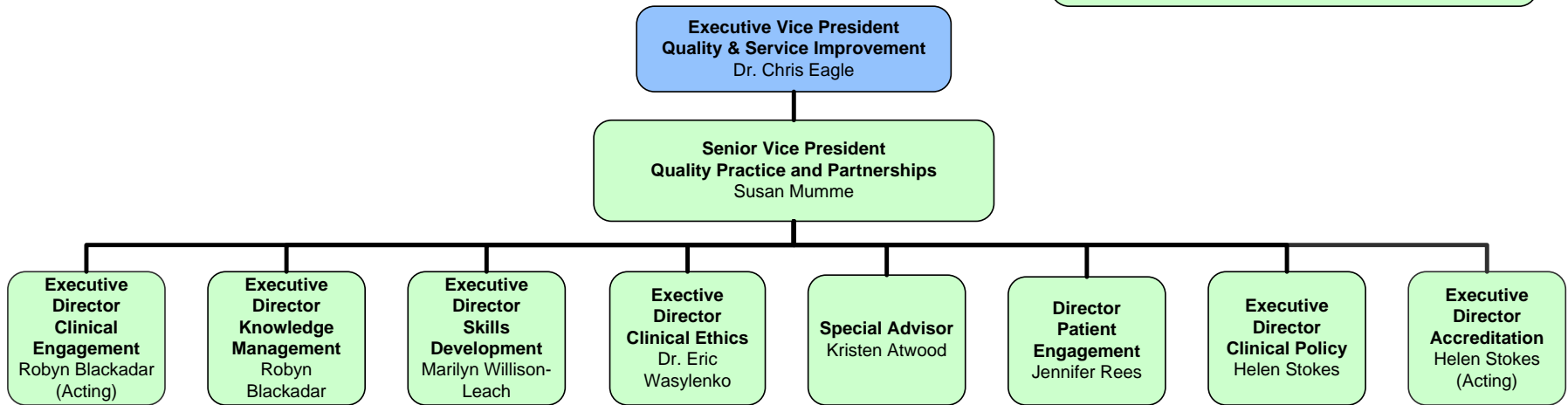


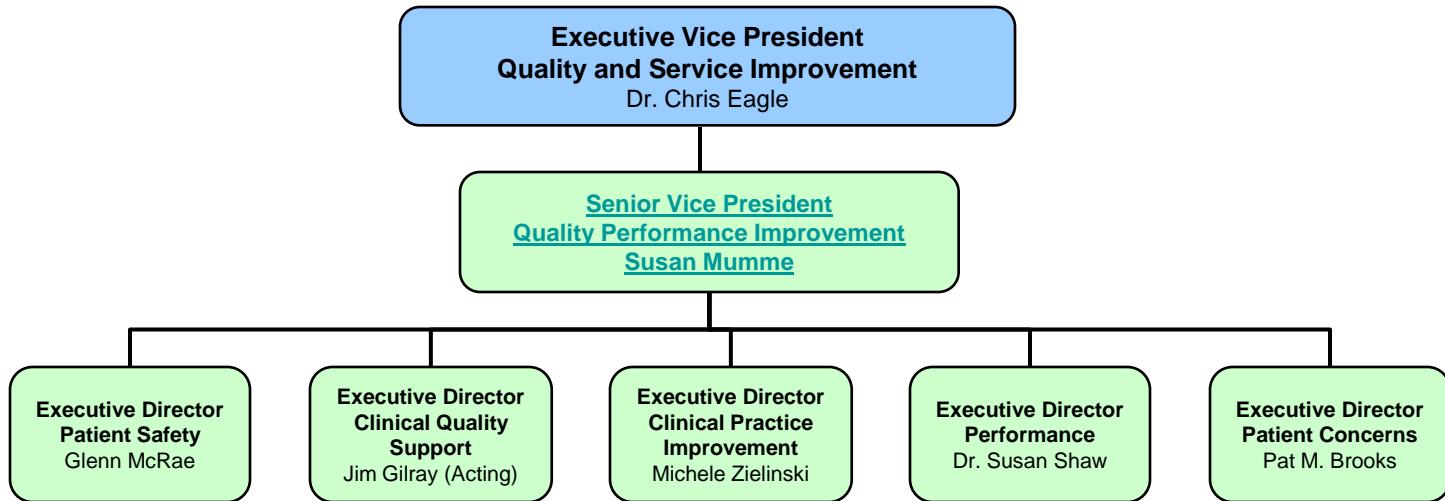


South Health Campus

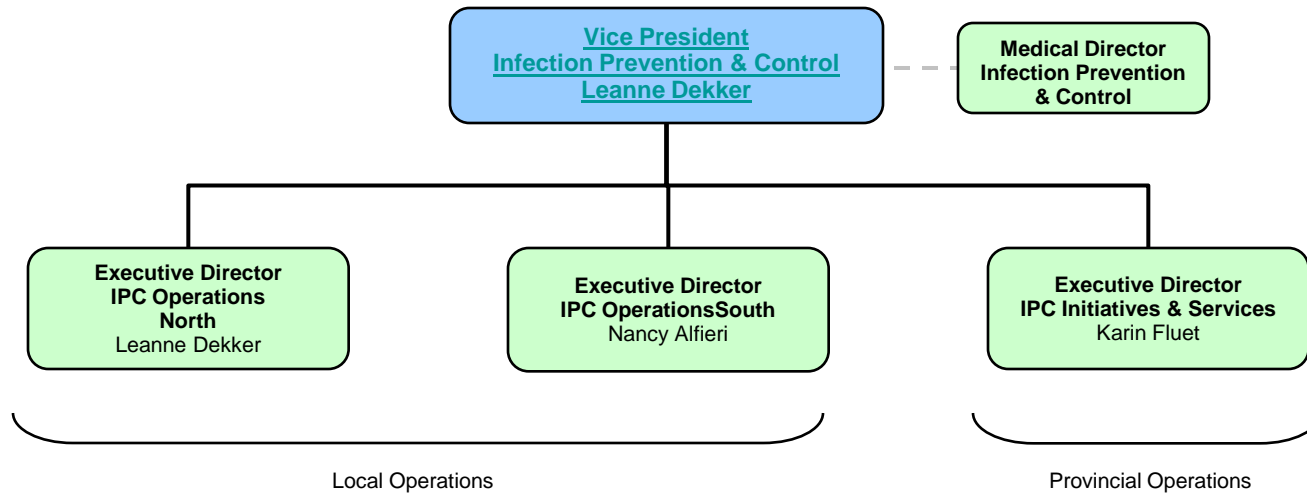


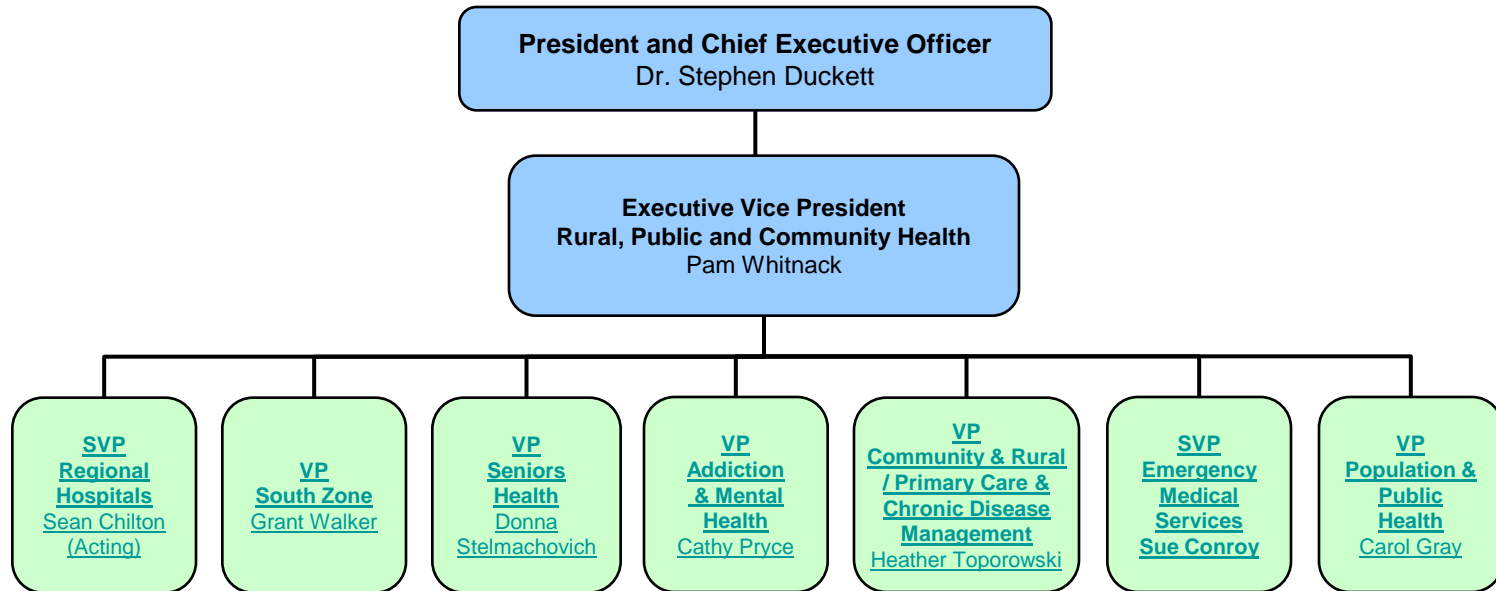
Quality Practice and Partnerships



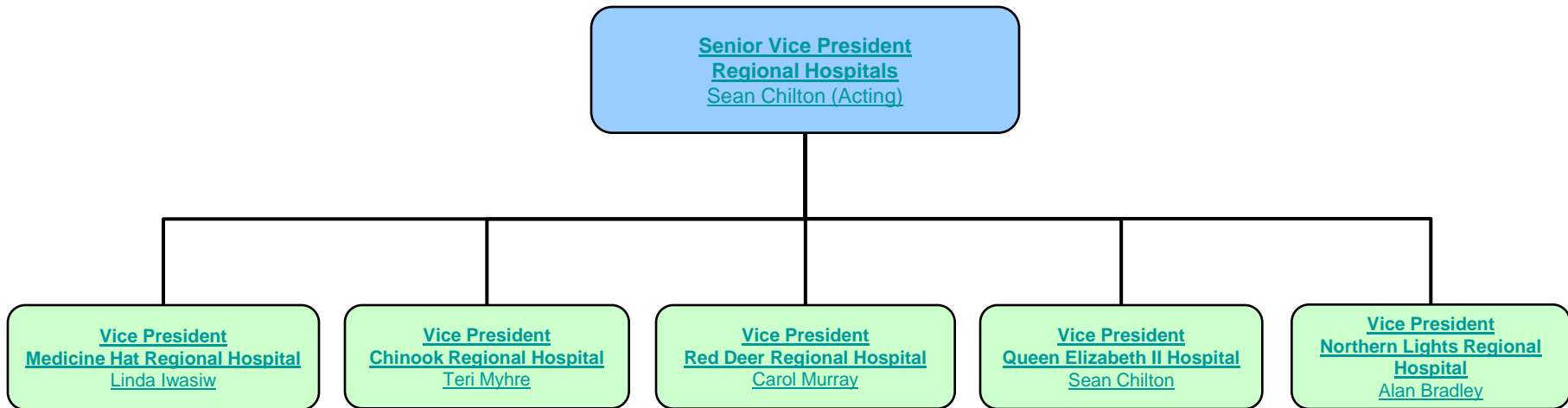


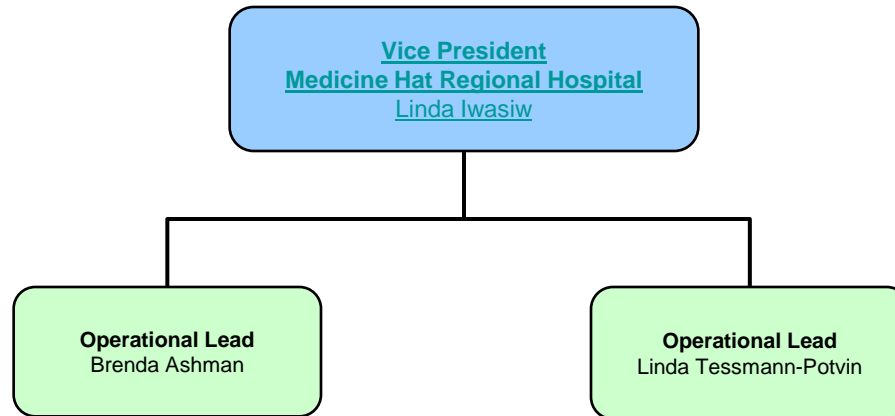
Infection Prevention and Control

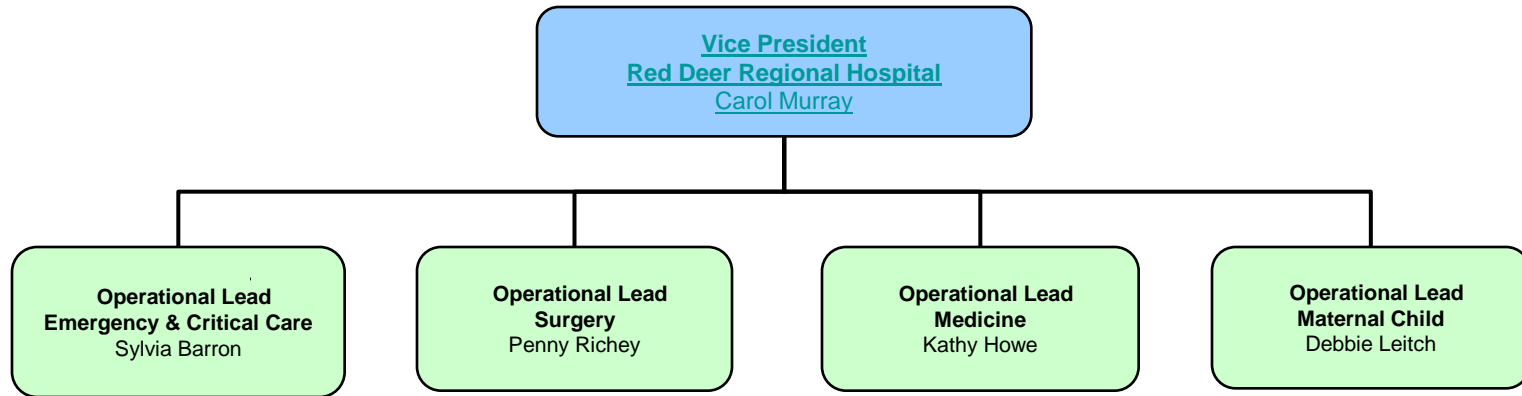




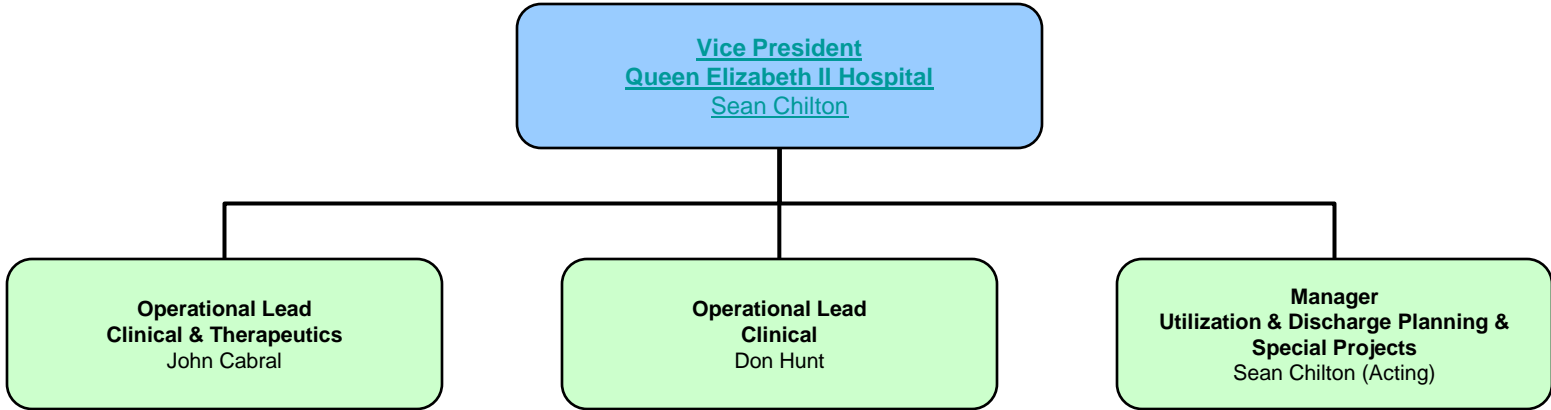
Regional Hospitals

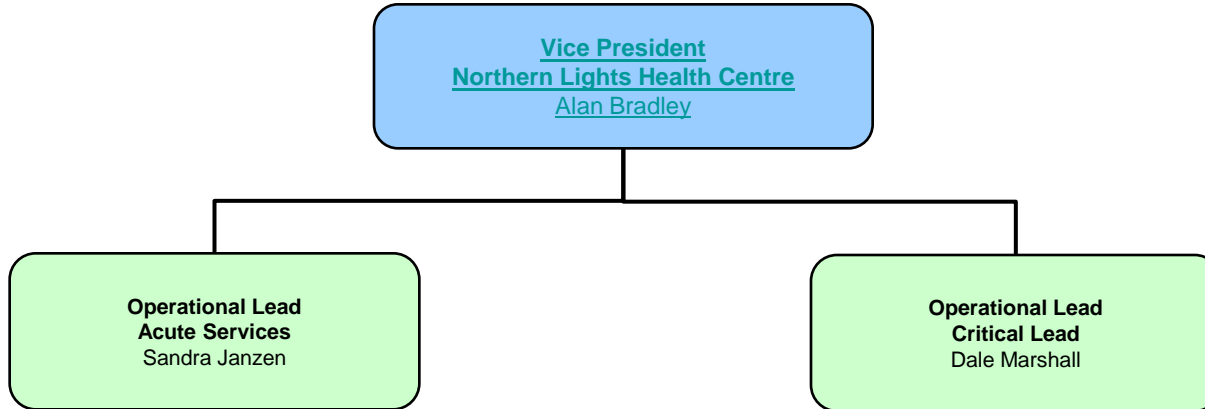




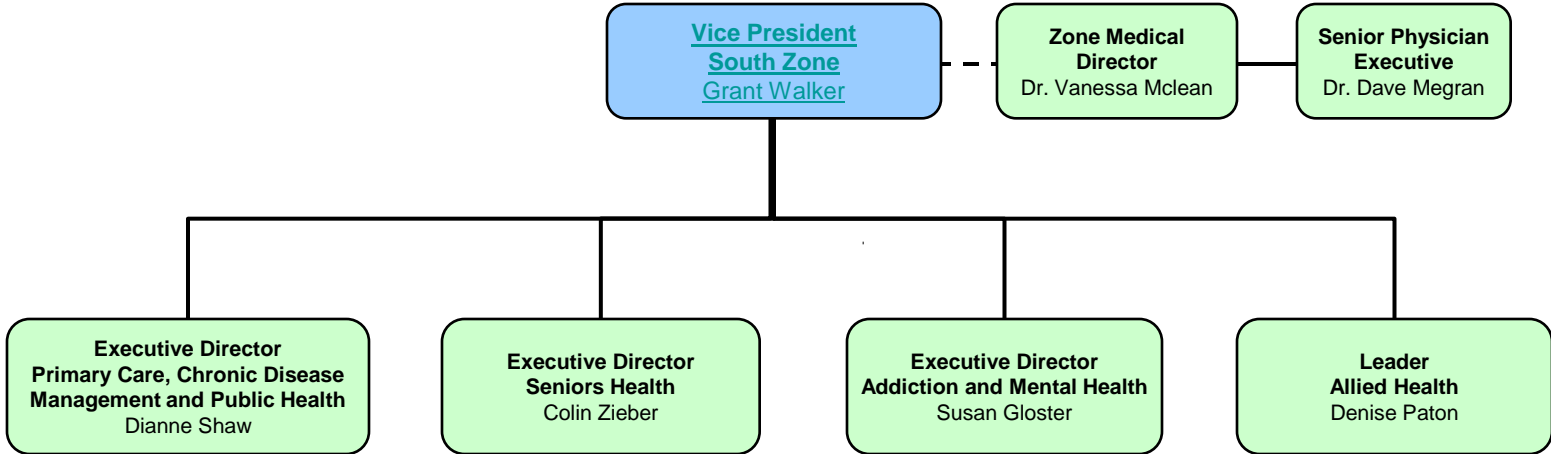


Queen Elizabeth II Hospital

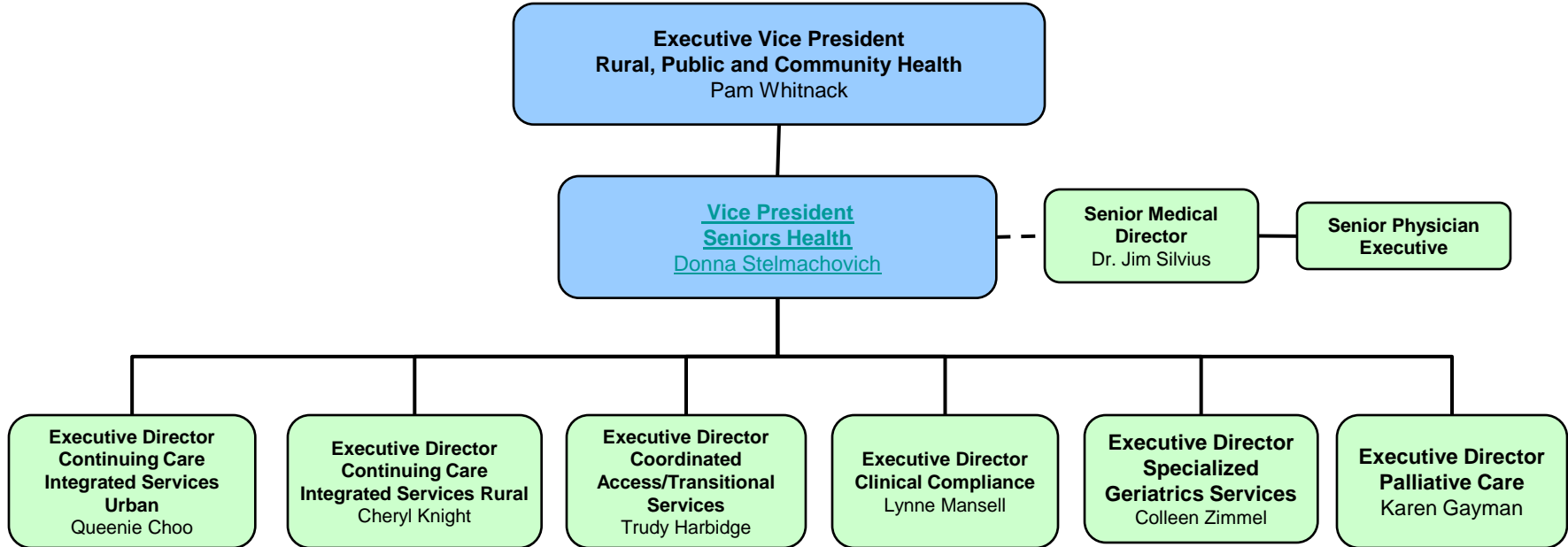


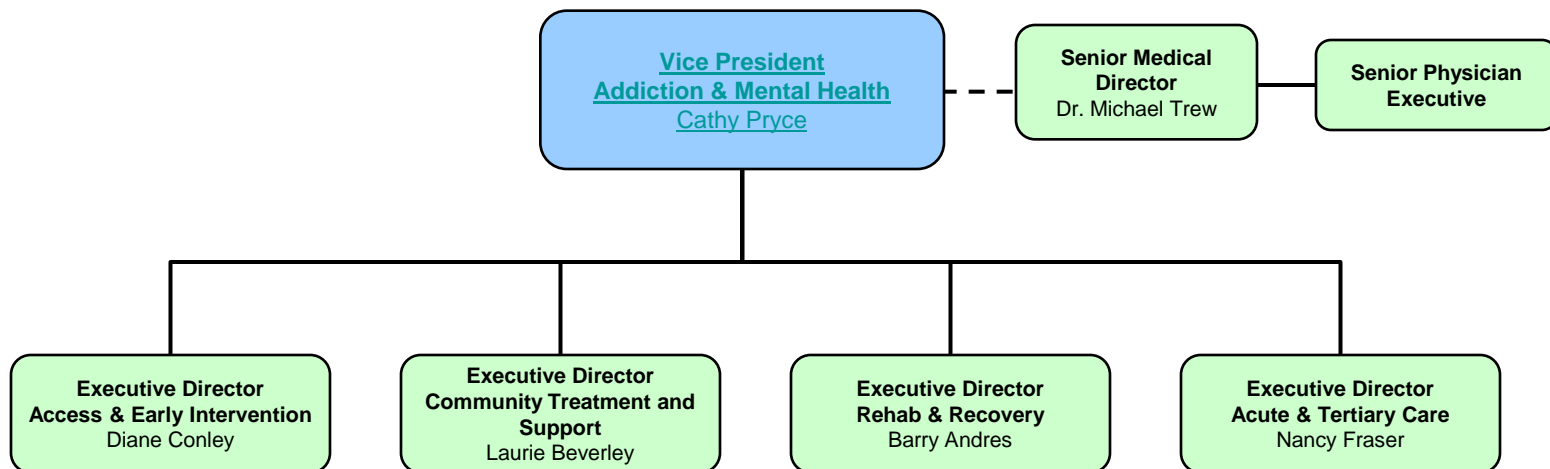


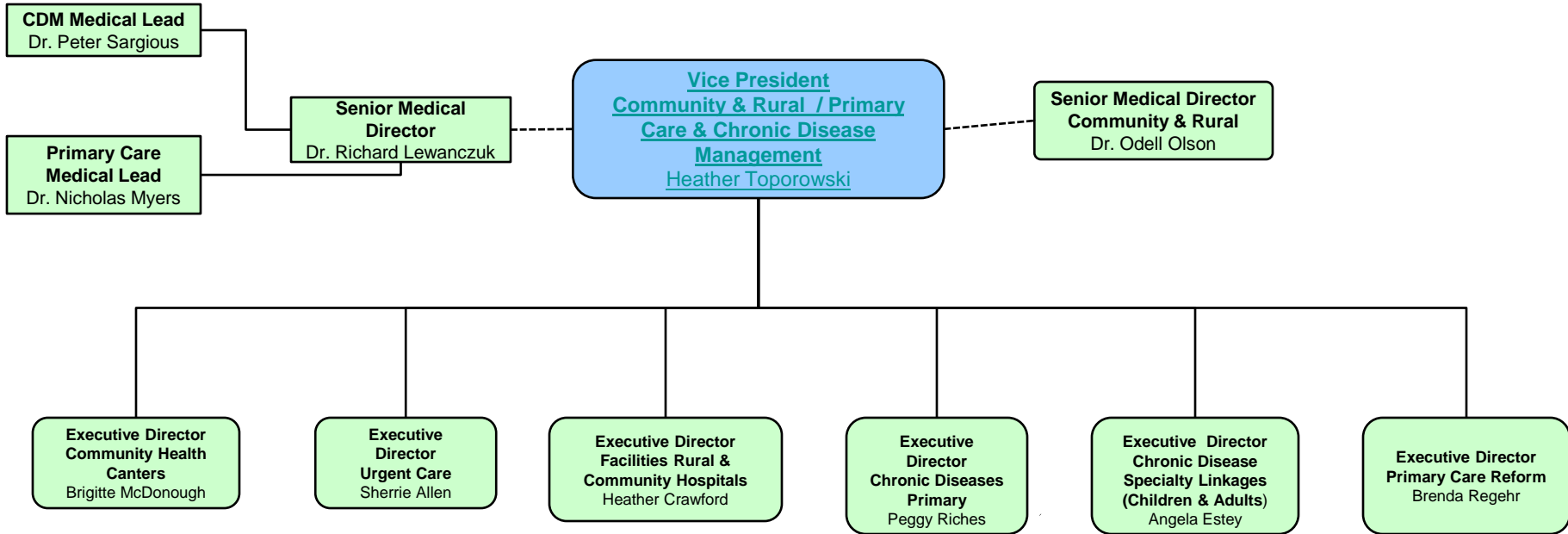
South Zone



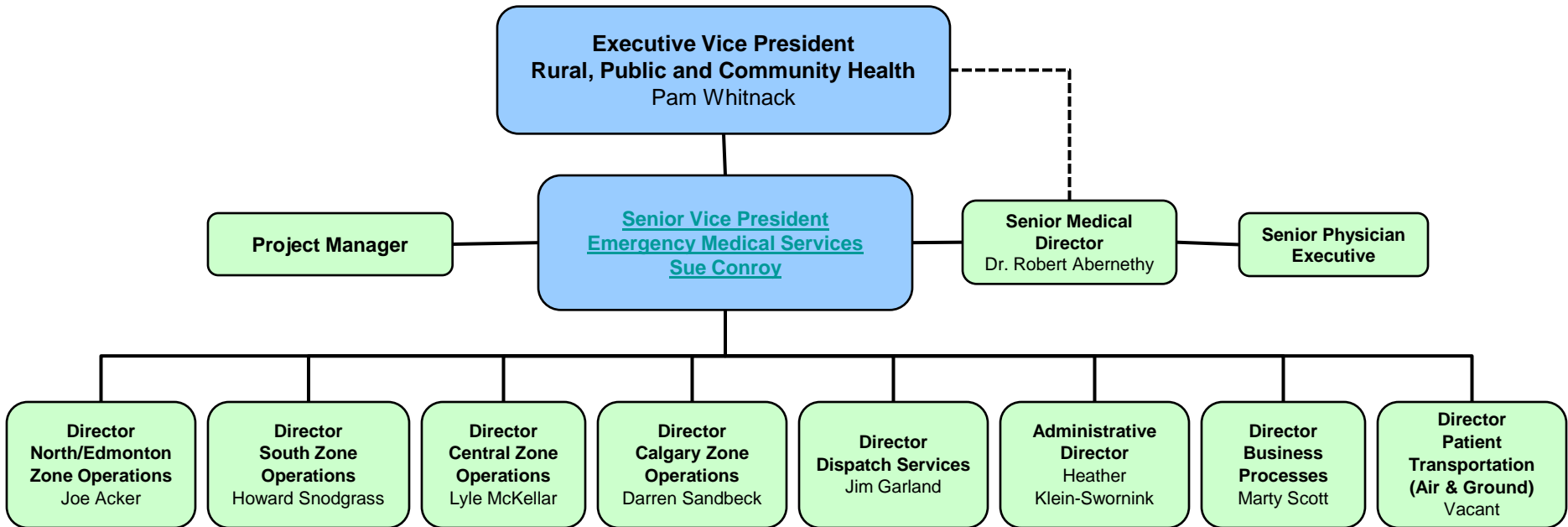
Seniors Health



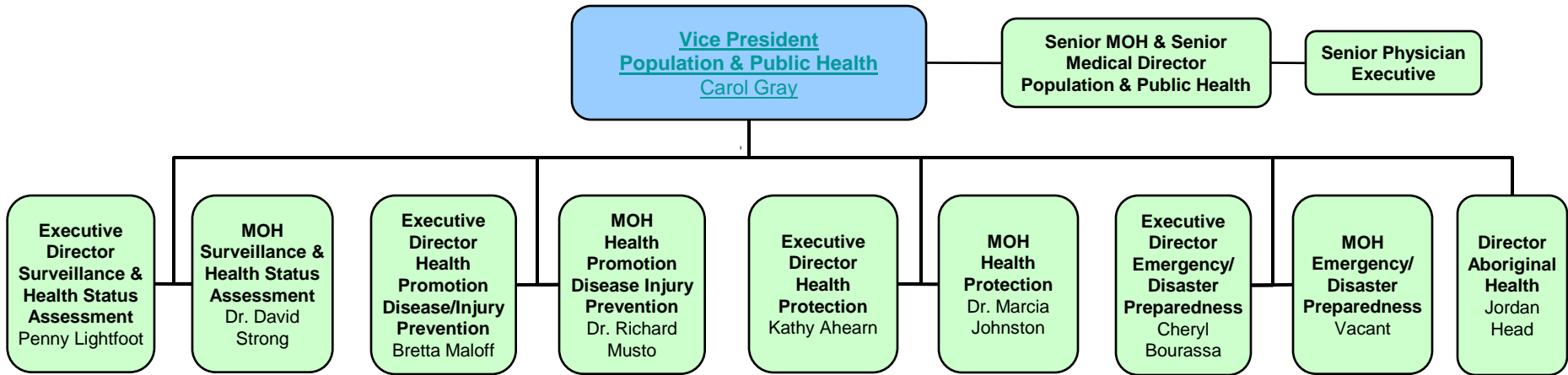


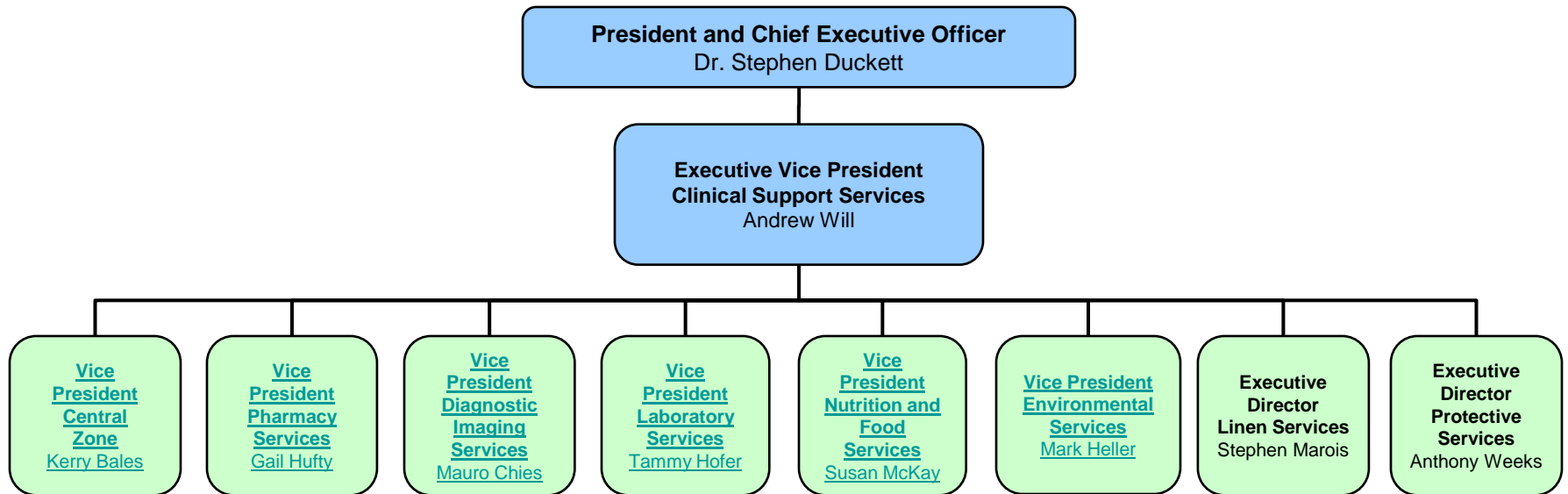


Emergency Medical Services

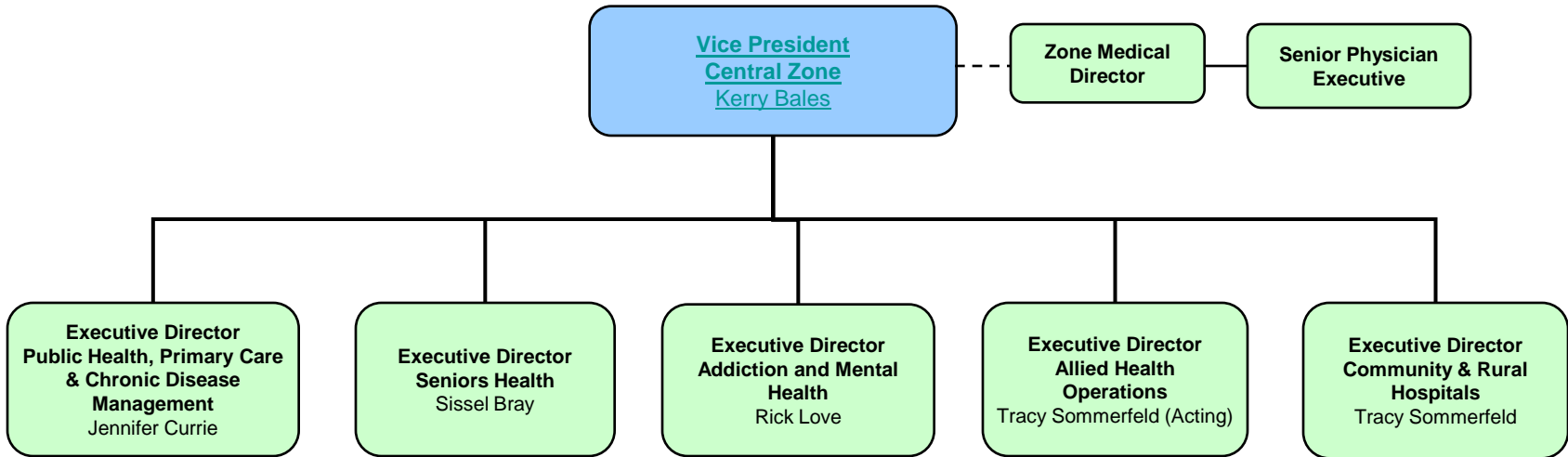


Population and Public Health

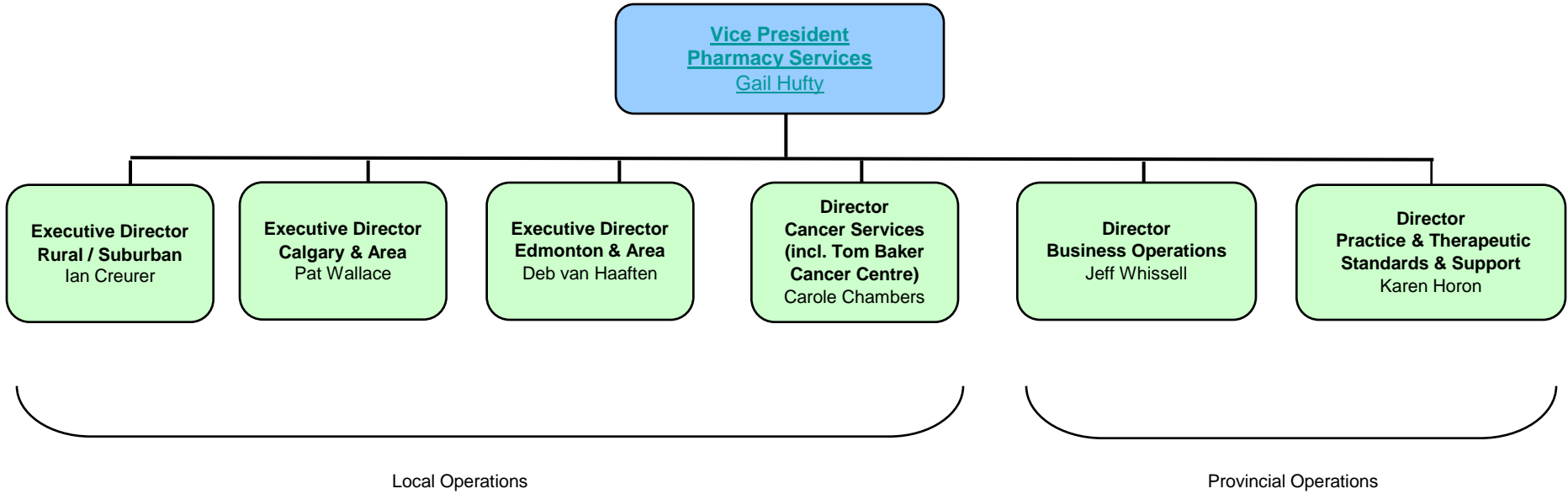




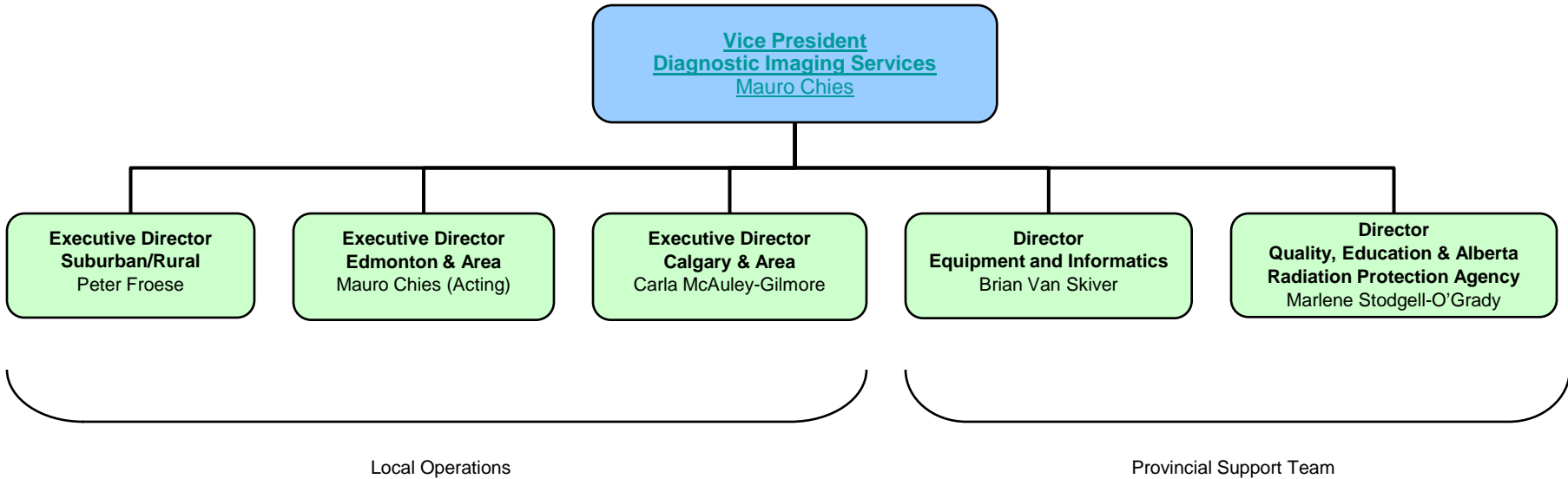
Central Zone



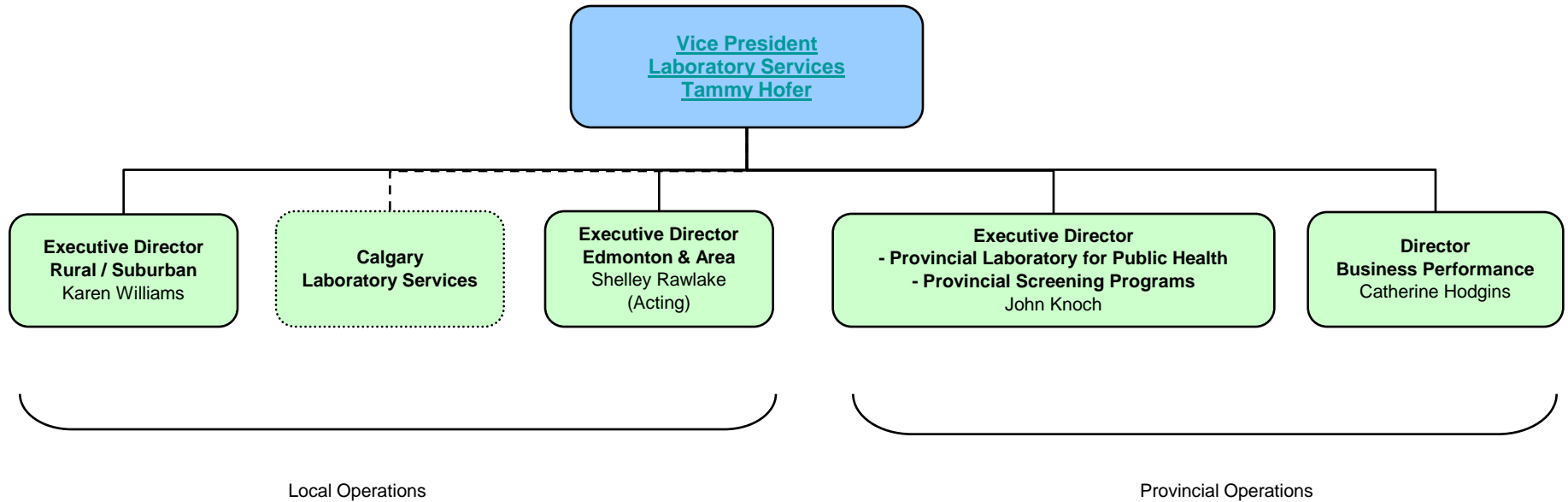
Pharmacy Services

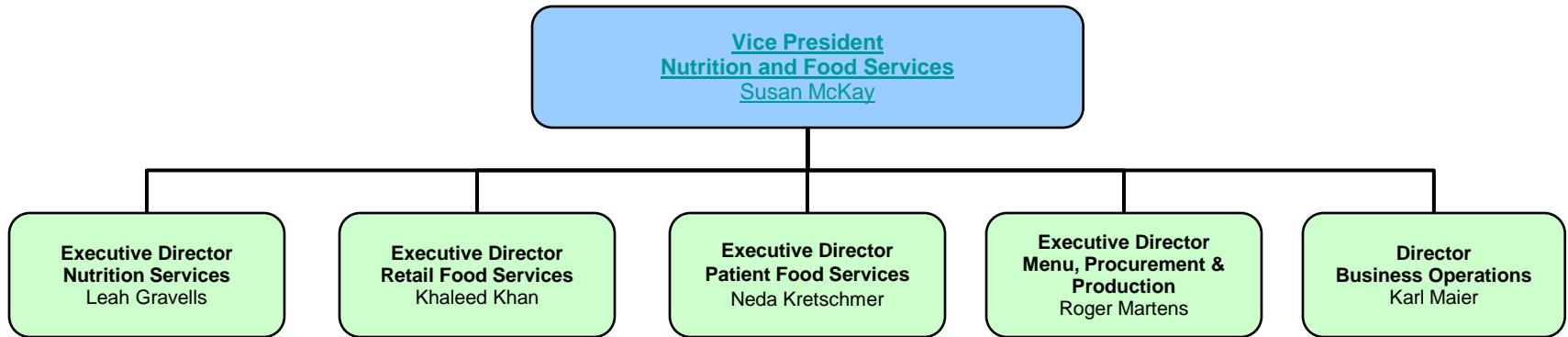


Diagnostic Imaging Services

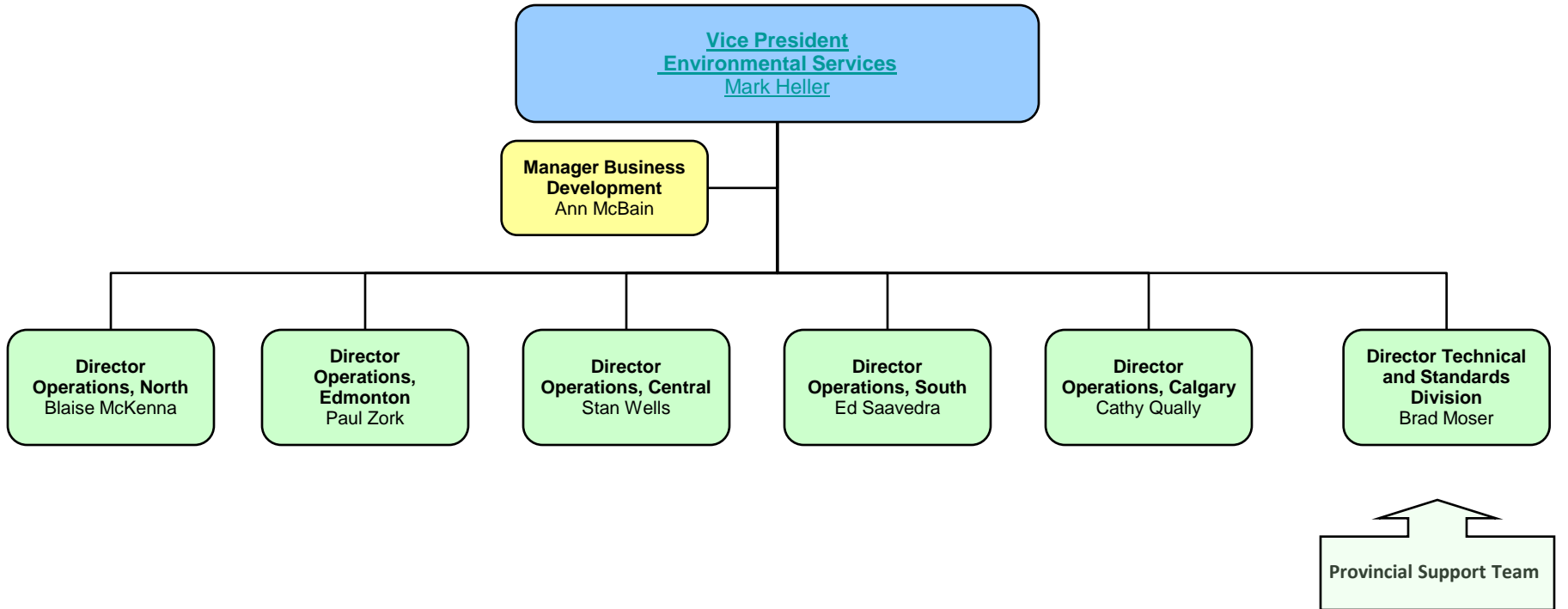


Laboratory Services

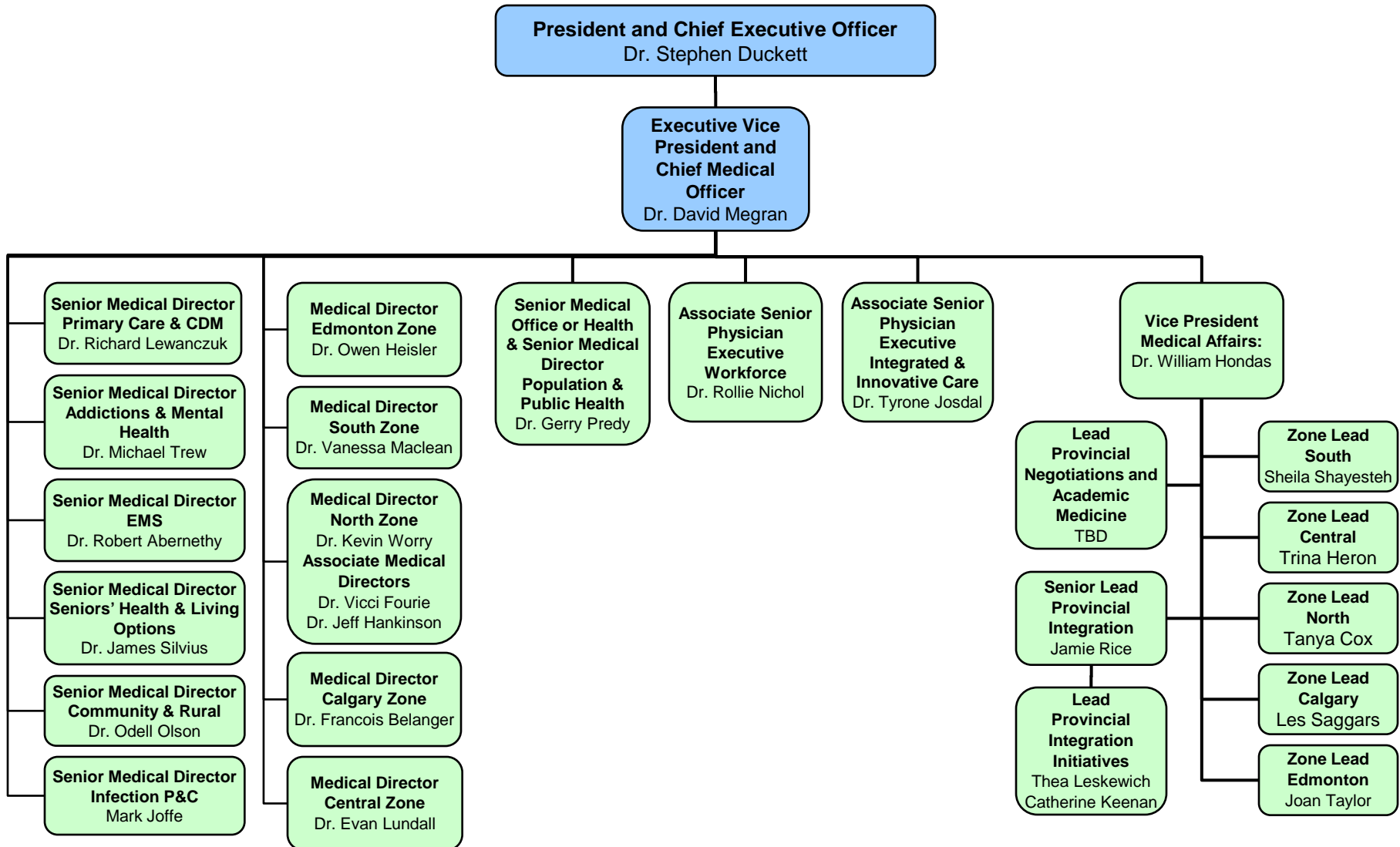




Environmental Services



Portfolio of the Senior Physician Executive



**Board Office
Community Engagement**

