

## Emergency Health Care for Adults

### Emergency health care may be required to:

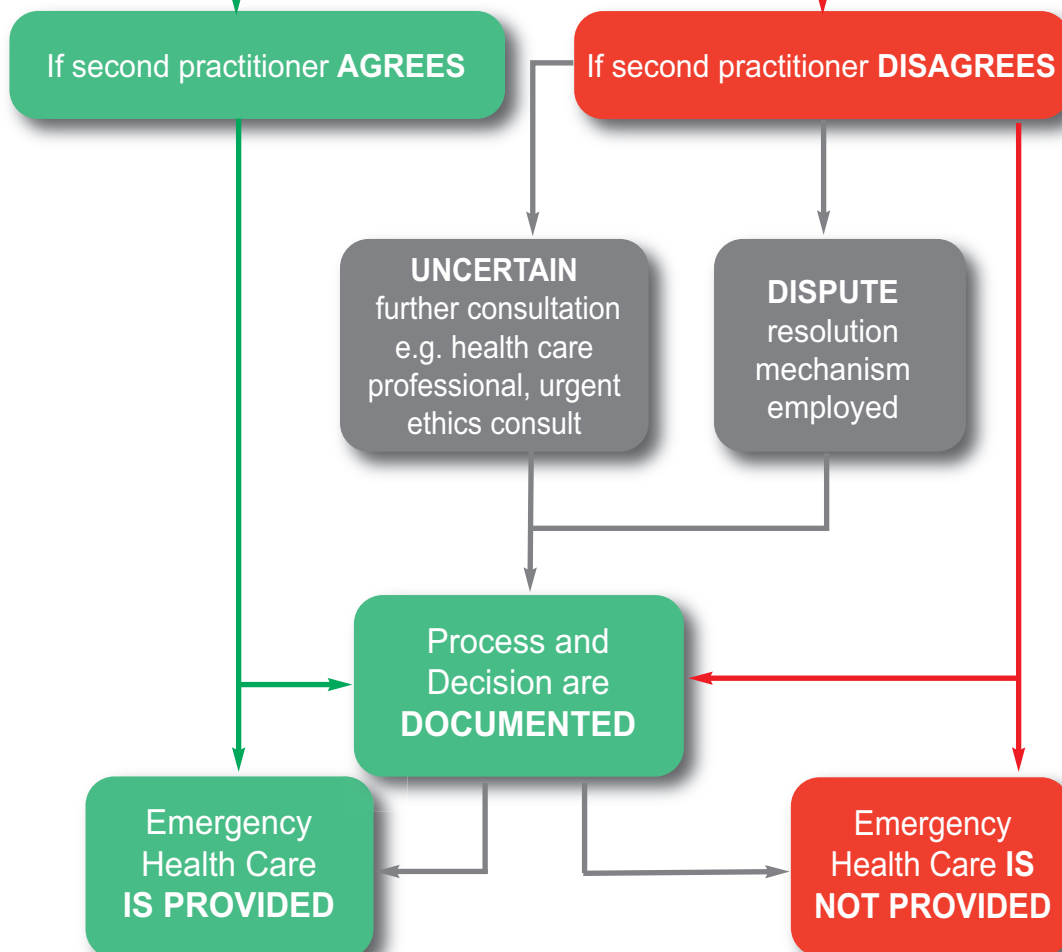
- Preserve the adult's life
- Prevent serious physical or mental harm to the adult; or
- Alleviate severe pain

### The physician must be satisfied that the adult:

- Lacks capacity to consent or refuse consent to the emergency health care due to drug or alcohol impairment, complete or partial lack of consciousness, or another cause.
- Did not previously express or retract a wish or instruction about health care that is applicable to the situation; and
- No guardian or other person with decision-making authority is available or accessible.

**Option 1:** Before providing the emergency health care, the physician, when practicable, shall obtain a written opinion from a second physician that the situation: meets the criteria for providing emergency health care.

**Option 2:** If a second physician is not available, then the physician may seek a written opinion from a Nurse Practitioner OR Registered Nurse that the situation: meets the criteria for providing emergency health care.



*NB: This exception is only valid during the emergency situation. Consent must be obtained for all subsequent interventions from the adult and/or appropriate decision-maker*