

Weekly Report

November 23, 2010

The purpose of this report is to inform Public Health staff, primary care providers, acute care staff and other community practitioners about recent respiratory virus activity in the province of Alberta. Unless otherwise noted, all data presented are current as of the Saturday prior to the day the report is released.

What's New?

- According to the latest WHO update, influenza A (H3N2), continues to be the predominant influenza virus around the world, with influenza B viruses and H1N1 (2009) strains co-circulating in some countries.
- Influenza activity in the US and Canada continue to be low with small numbers of seasonal influenza A (H3N2) and B viruses circulating. Activity in Canada has increased slightly in the last couple of weeks (specifically in BC, SK, ON and QC).
- In Alberta, two new cases of influenza A (H3) have been confirmed since last week's report. Both cases are 18 to less than 65 years of age and are from the Calgary Zone. These new cases bring the total number of laboratory confirmed cases in the province to 12 (seven in the South Zone and five in the Calgary Zone). All have been typed as H3. There were no reports of respiratory outbreaks in the province last week.
- Rhino-enterovirus continues to be the predominant respiratory virus circulating in Alberta although this activity appears to have decreased in recent weeks. There has been a gradual increasing trend in other respiratory virus activity recently, specifically parainfluenza in the Central, Edmonton and North Zones and RSV in the Edmonton Zone. These trends will continue to be monitored.

Quick Links

[Alberta Snapshot](#)

[Section 1: Alberta](#)

[Section 2: Zone 1 - South](#)

[Section 3: Zone 2 - Calgary](#)

[Section 4: Zone 3 - Central](#)

[Section 5: Zone 4 – Edmonton](#)

[Section 6: Zone 5 – North](#)

[Annex: Data Notes](#)

Current Global Information

[FluWatch \(PHAC\)](#)

[FluView \(US CDC\)](#)

[HPA \(UK\)](#)

[WHO](#)

[Travel Advisories](#)

Contact Us

If you have questions about the Alberta Respiratory Virus Surveillance Update, or any of the indicators, please contact:
AHSPublicHealthSurveillance@albertahealthservices.ca

Or phone: 780-342-0210

Alberta Snapshot

[Back to first page](#)

Indicators		Cumulative Counts Week 35 (starting Aug 29/10) to week 46 (starting Nov 14/10)					Alberta	
		South	Calgary	Central	Edmonton	North		
Laboratory Confirmed Cases	Number of cases with a positive respiratory specimen ¹	Adenovirus	2	15	4	14	6	41
		Coronavirus	0	8	1	12	5	26
		Human metapneumovirus (hMPV)	1	1	0	0	0	2
		Influenza A	7	5	0	0	0	12
		Influenza B	0	0	0	0	0	0
		Parainfluenza	4	16	11	43	21	95
		Respiratory syncytial virus (RSV)	3	17	0	16	5	41
		Rhino enterovirus	57	264	98	367	164	950
		Mixed	1	25	5	16	17	64
		Total	75	351	119	468	218	1231
Outbreaks	# respiratory outbreaks reported ²	0	5	0	5	1	11	
Influenza Immunizations	Total number of clients who have received 1 dose administered by AHS Public Health ³ (cumulative since Oct 3, 2010)	39,041	151,566	50,331	138,947	53,350	433,235	

-- Information not available

¹ Source: DIAL – Provincial Laboratory (includes cases with positive respiratory specimens received on or before Nov 20, 2010)

² Source: Alberta Health and Wellness Outbreak Reporting Form (Fillable PDF) from All Zones

³Source: AHS Zones (number does not include doses provided by external providers); includes first doses only for those that require two doses

For more information on data definitions and sources see [Annex: Data Notes section at the end of this report](#)

SURVEILLANCE AND HEALTH STATUS ASSESSMENT

Public Health Surveillance

Report Date: November 23, 2010

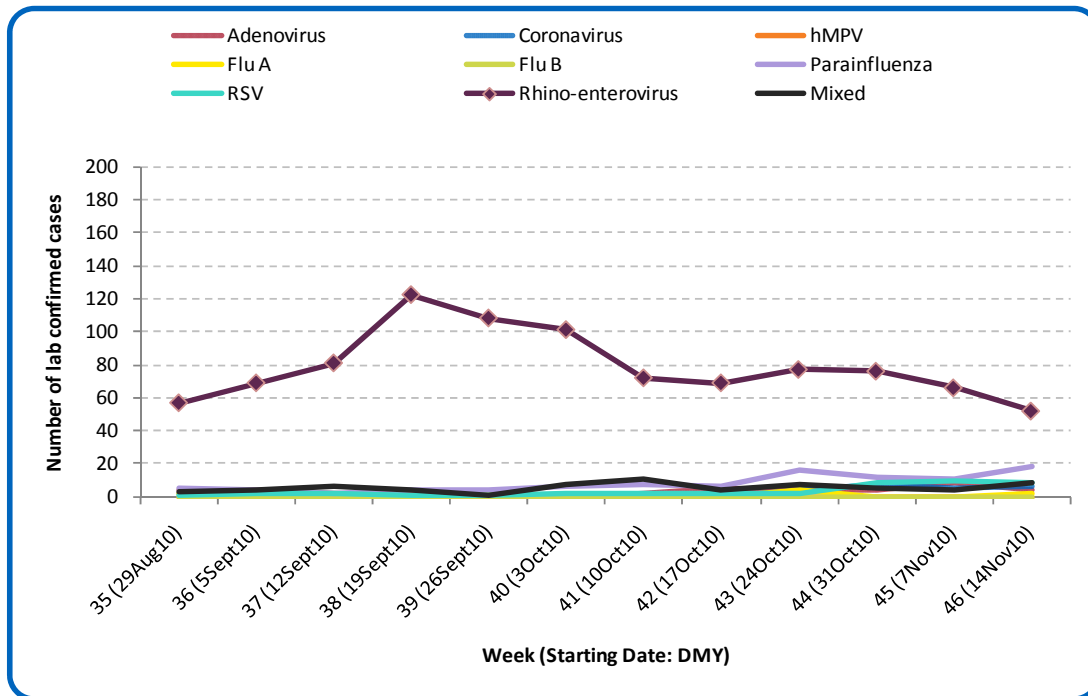
An influenza report targeted to the general public is available at: <http://www.health.alberta.ca/health-info/influenza-evidence.html>

SECTION 1: ALBERTA

[Back to first page](#)

The predominant respiratory virus in Alberta is still rhino-enterovirus. Parainfluenza and RSV activity has increased slightly in recent weeks. Two new cases of influenza A (H3) have been reported in the Calgary Zone since last week. In total, there have been twelve confirmed cases of influenza A (H3) in Alberta since late August. Seven cases have been in adults aged 18 to less than 65 years, one case has been in an adult aged 65 to less than 75 years, two have been in adults aged 75 years and over, and two cases have occurred in children under the age of 5 years.

Figure 1A: Laboratory confirmed respiratory virus cases, by virus type, by week, Alberta (2010)



Source: DIAL – Provincial Laboratory (includes cases with positive respiratory specimens received on or before Nov 20, 2010)
For more information on data definitions and sources see [Annex: Data Notes section at the end of this report](#)

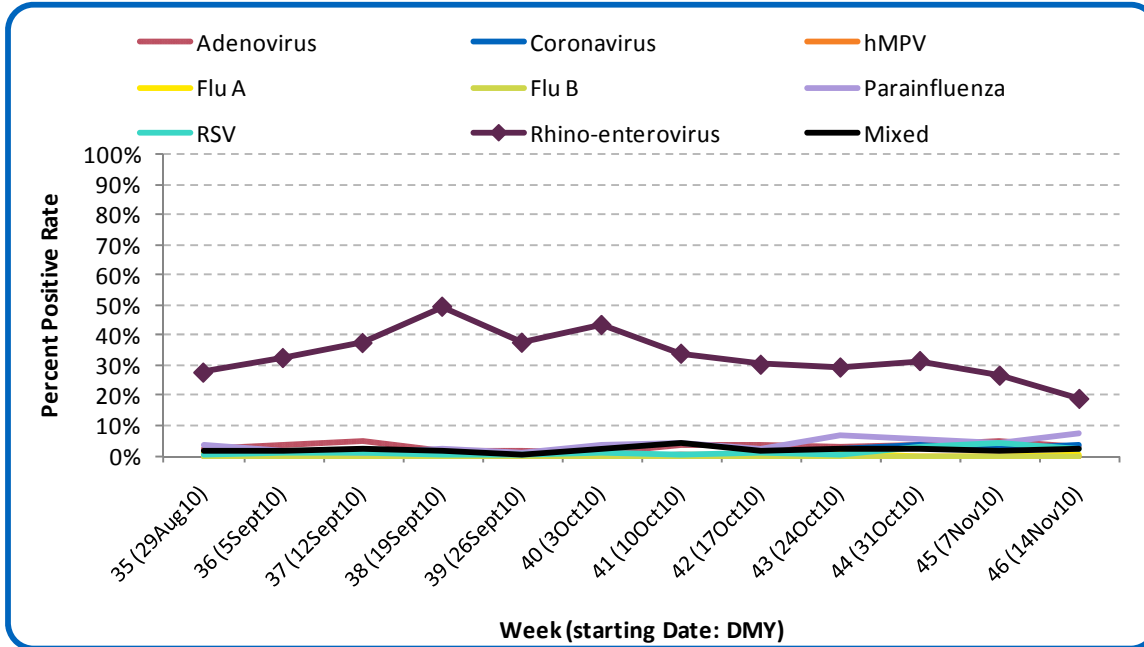
SURVEILLANCE AND HEALTH STATUS ASSESSMENT

Public Health Surveillance
Report Date: November 23, 2010

An influenza report targeted to the general public is available at: <http://www.health.alberta.ca/health-info/influenza-evidence.html>

Figure 1B: Respiratory Specimen Percent Positive Rates, by virus type, by week, Alberta (2010)

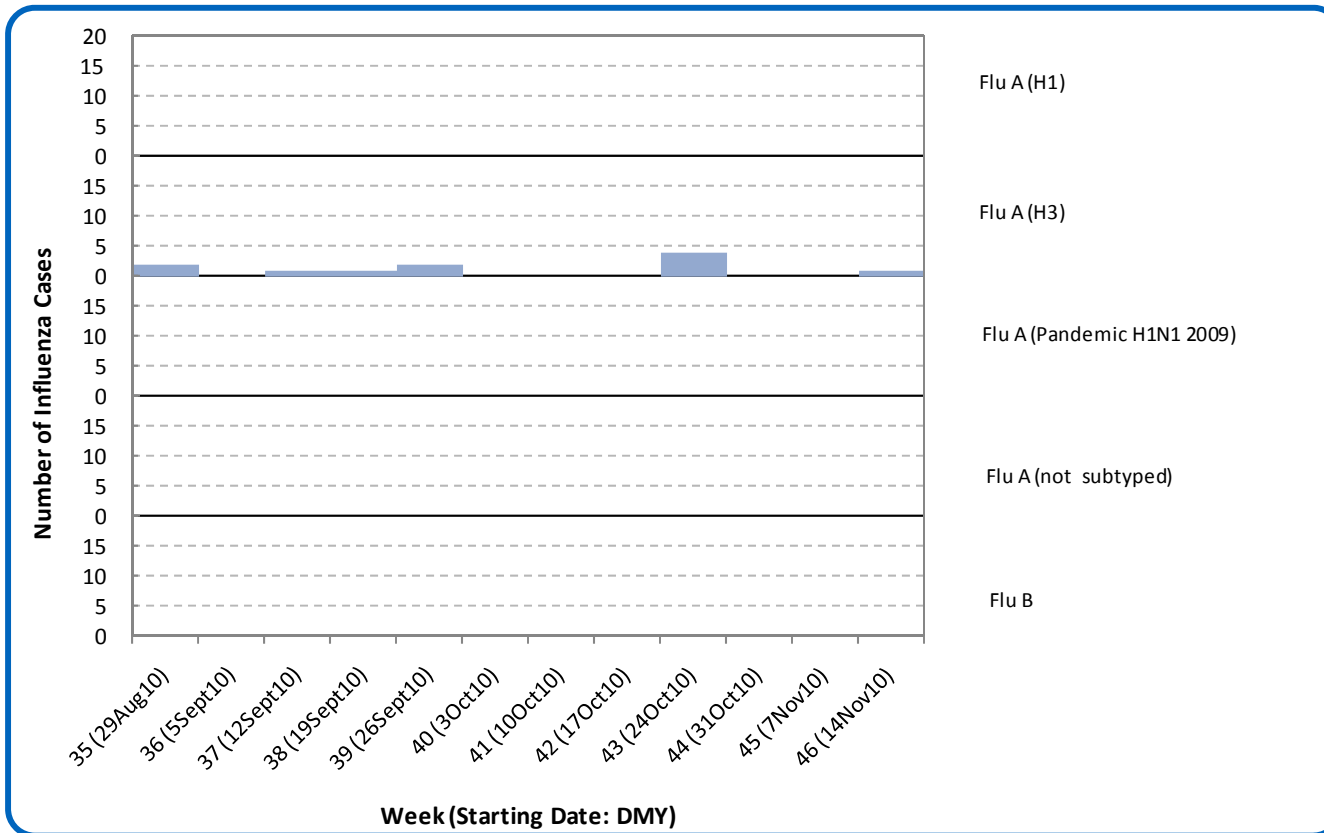
[Back to first page](#)



Source: DIAL – Provincial Laboratory (includes cases with positive respiratory specimens received on or before Nov 20, 2010)
 For more information on data definitions and sources see [Annex: Data Notes section at the end of this report](#)

Figure 1C: Laboratory confirmed Influenza cases, by subtype, by week, Alberta (2010)

[Back to first page](#)



Source: Influenza Outbreak Response Toolkit – Provincial Laboratory (based on specimens classified on or before Nov 20, 2010). Note: specimens received before Nov 20, 2010 but classified to a subtype after this date will not be included in this graph.

For more information on data definitions and sources see [Annex: Data Notes section at the end of this report](#)

[Back to first page](#)

Table 1A: Cumulative Influenza cases, by subtype, by age group, Alberta (Aug 29 – Nov 21, 2010)

	Flu A (Seasonal-H1)		Flu A (Seasonal-H3)		Flu A (Pandemic H1N1 2009)		Flu A (not subtyped)		Flu B		Total	
	#	Rate (per 10,000)	#	Rate (per 10,000)	#	Rate (per 10,000)	#	Rate (per 10,000)	#	Rate (per 10,000)	#	Rate (per 10,000)
0 to <2 years	0	0.0	0	0.0	0	0.0	0	0.0	0	0.0	0	0.0
2 to <5 years	0	0.0	2	0.1	0	0.0	0	0.0	0	0.0	2	0.1
5 to <9 years	0	0.0	0	0.0	0	0.0	0	0.0	0	0.0	0	0.0
9 to <18 years	0	0.0	0	0.0	0	0.0	0	0.0	0	0.0	0	0.0
18 to <65 years	0	0.0	7	<0.1	0	0.0	0	0.0	0	0.0	7	<0.1
65 to <75 years	0	0.0	1	<0.1	0	0.0	0	0.0	0	0.0	1	<0.1
75+ years	0	0.0	2	0.1	0	0.0	0	0.0	0	0.0	2	0.1
Total	0	0.0	12	<0.1	0	0.0	0	0.0	0	0.0	12	<0.1

Source for Table 1A and 1B: Influenza Outbreak Response Toolkit – Provincial Laboratory (based on specimens classified on or before Nov 20, 2010).

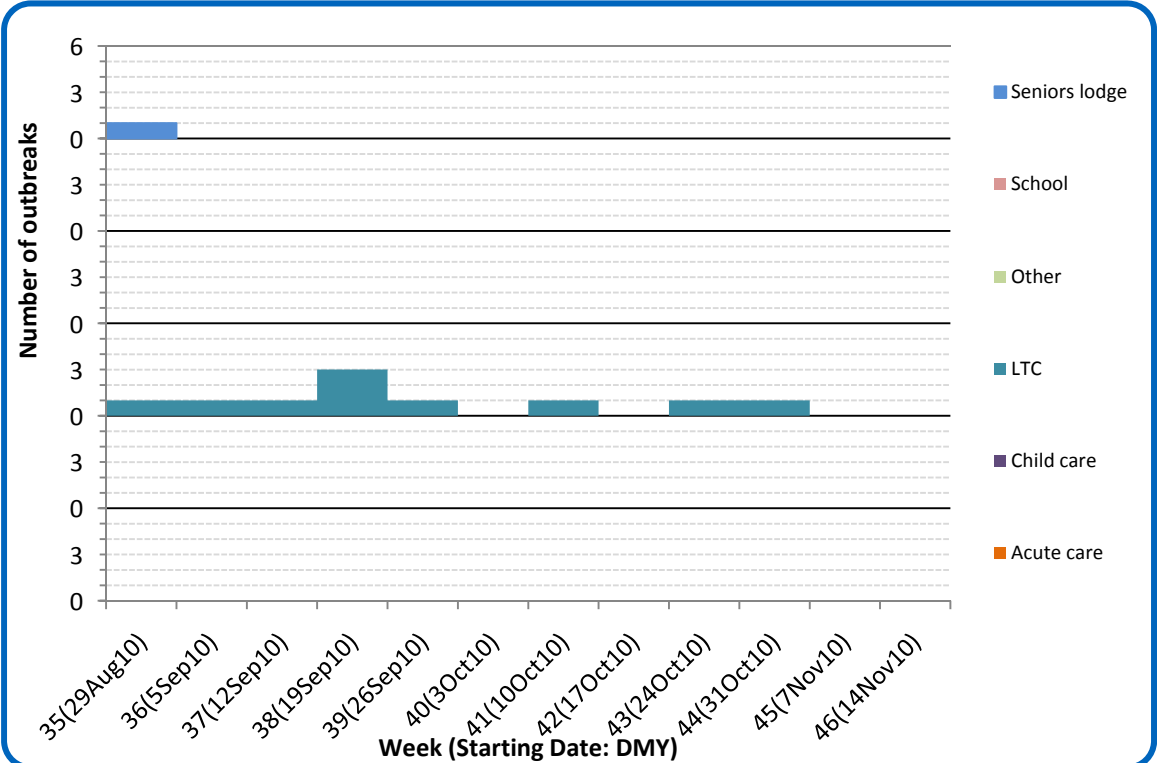
Population data values used to calculate rates are for June 30, 2009 and are estimated using actual population values from the Alberta Health Care Insurance Plan (AHCIP) Registration File as of March 31, 2009.

For more information on data definitions and sources see [Annex: Data Notes section at the end of this report](#)

[Back to first page](#)

There were no reports of respiratory outbreaks in Alberta in Week 46 (Nov 14 - 20).

Figure 1D: Reported respiratory outbreaks, by facility type, by week, Alberta (2010)



Source: Alberta Outbreak Reporting Form as of 23:59 on November 20, 2010
 For more information on data definitions and sources see [Annex: Data Notes section at the end of this report](#)

SURVEILLANCE AND HEALTH STATUS ASSESSMENT

Public Health Surveillance
 Report Date: November 23, 2010

An influenza report targeted to the general public is available at: <http://www.health.alberta.ca/health-info/influenza-evidence.html>

[Back to first page](#)

Attack rates in respiratory outbreaks

No respiratory outbreaks were reported in Alberta for Week 46 (Nov 14 - 20).

Influenza-like illness visits and “Left Without Being Seen”

The number of Influenza-like-illness (ILI) related visits to emergency departments/urgent care centers, hospital admissions, and ED visits that left without being seen from the city of Calgary and the Edmonton zone were all slightly higher in Week 46 (Nov 14 – 20) than in Week 45. For people with cough, the number of hospital admissions was higher last week than in the previous week, while visits to emergency department/urgent care centers and ED visits that left without being seen were lower.

Respiratory related calls to Health Link Alberta

The number of calls to Health Link Alberta for cough or breathing difficulties was 9% lower in Week 46 (Nov 14 – 20) than in Week 45 and was comparable to the level in Week 44.

Percentage of visits to sentinel offices with influenza-like illness (ILI)

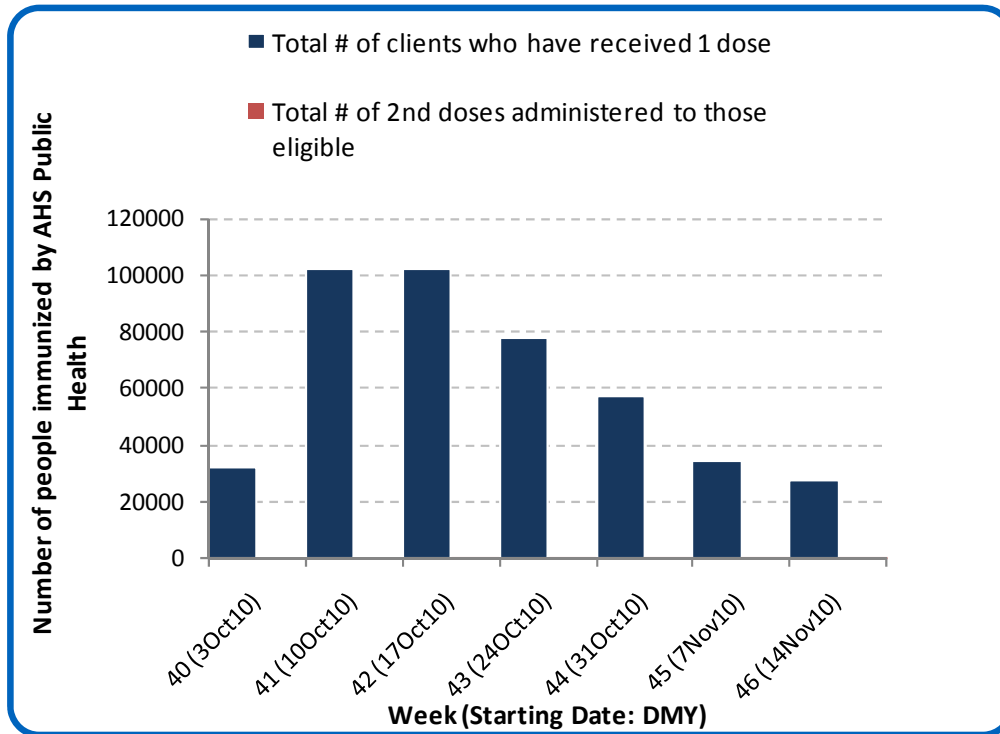
In week 45 (Nov 7-13), the province-wide percentage of ILI-related visits to sentinel physician offices was comparable to the Week 44 level.

Percentage of visits to sentinel offices with lower respiratory tract infection (LRTI)

The province-wide percentage of LRTI-related visits to sentinel physician offices was marginally higher in Week 45 (Nov 6 – Nov 13) than in Week 44. The combined percentage of ILI- and LRTI-related visits was 13% higher in Week 45 than in Week 44.

[Back to first page](#)

Figure 1E: Number Immunized by AHS (Public Health), by week, Alberta (2010)



Source: AHS Zones (doses do not include those delivered by external providers);
 Note: Immunization coverage rates will be reported at the end of the influenza season
 For more information on data definitions and sources see [Annex: Data Notes section at the end of this report](#)

[Back to first page](#)

Table 1B: AHS (Public Health) Delivered Influenza Immunizations (with Cumulative totals), by priority group, Alberta (2010)

Priority Group		Number Immunized (Week 46 – Nov 14-20, 2010)	Cumulative Number Immunized (since Oct 3, 2010)
Long term care staff		63	2,357
Health care workers		622	16,624
Pregnant women		319	3,375
Residents of long term care		36	4,654
65 years of age and over		4,299	136,730
All children 6 months up to and including 23 months*	Dose #1	1,646	13,673
	Dose #2	582	899
All children 24 months up to and including 59 months*	Dose #1	1,725	18,335
	Dose #2	143	196
High risk: 5 years up to and including 8 years*	Dose #1	329	4,419
	Dose #2	7	18
High risk: 9 years up to and including 64 years		3,272	47,413
Healthy: 5 years up to and including 8 years*	Dose #1	1,208	14,357
	Dose #2	71	102
Healthy: 9 years up to and including 64 years		14,294	171,298
Total number of clients who have received 1 dose		27,813	433,235
Total number of 2nd doses administered to those eligible*		803	1,215

Source: AHS Zones (doses do not include those delivered by external providers)

*Children under 9 years of age who have not received at least one dose of seasonal influenza vaccine in past years require two doses, given at least four weeks apart.

Note: Immunization coverage rates will be reported at the end of the influenza season

For more information on data definitions and sources see [Annex: Data Notes section at the end of this report](#)

SURVEILLANCE AND HEALTH STATUS ASSESSMENT

Public Health Surveillance

Report Date: November 23, 2010

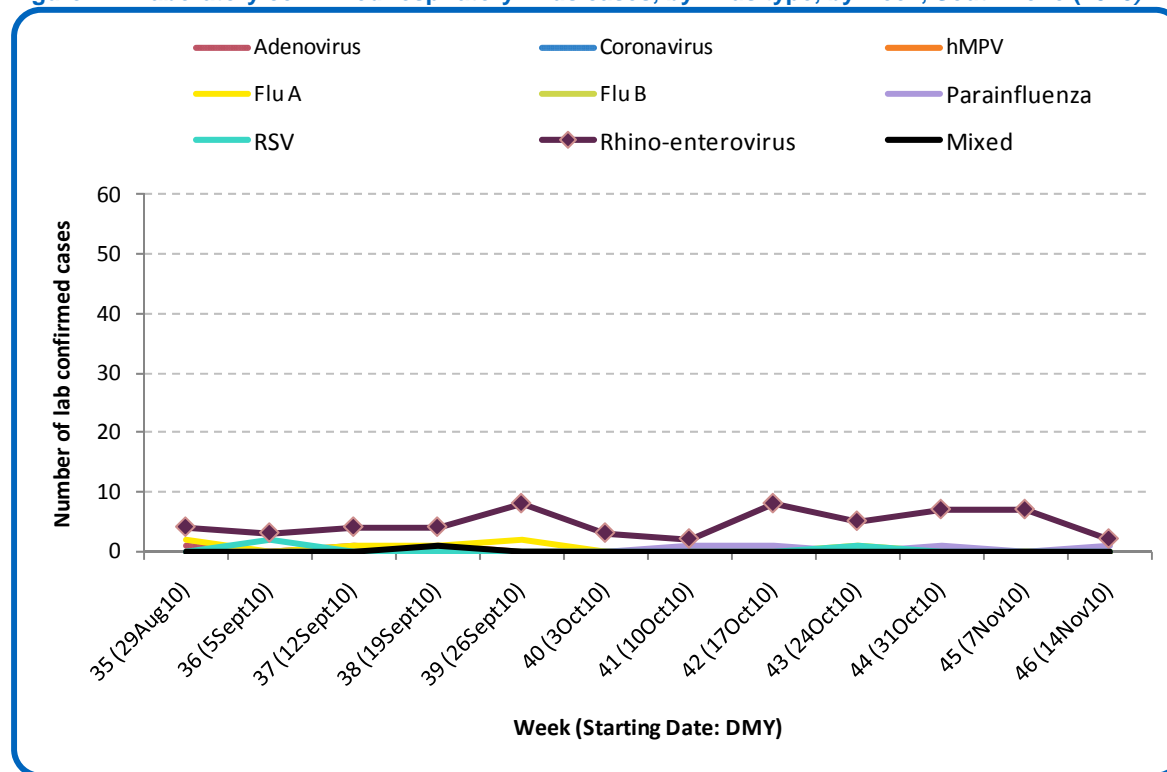
An influenza report targeted to the general public is available at: <http://www.health.alberta.ca/health-info/influenza-evidence.html>

SECTION 2: ZONE 1 - SOUTH

[Back to first page](#)

No new influenza cases have been reported in the South Zone in the past three weeks. In total, there have been 7 confirmed cases of influenza A (H3) in the South Zone since late August. 5 cases have been in adults aged 18 to less than 65 years and 2 cases have been in children under the age of 5 years.

Figure 2A: Laboratory confirmed respiratory virus cases, by virus type, by week, South Zone (2010)



Source: DIAL – Provincial Laboratory (includes cases with positive respiratory specimens received on or before Nov 20, 2010)
For more information on data definitions and sources see [Annex: Data Notes section at the end of this report](#)

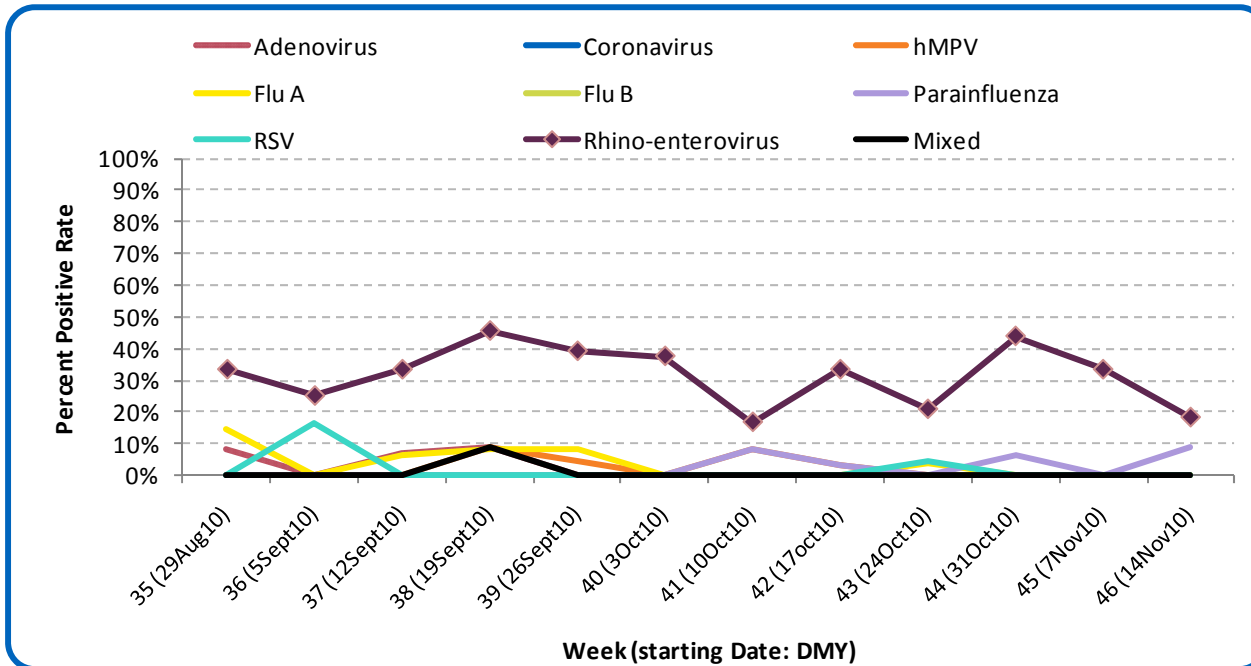
SURVEILLANCE AND HEALTH STATUS ASSESSMENT

Public Health Surveillance
Report Date: November 23, 2010

An influenza report targeted to the general public is available at: <http://www.health.alberta.ca/health-info/influenza-evidence.html>

[Back to first page](#)

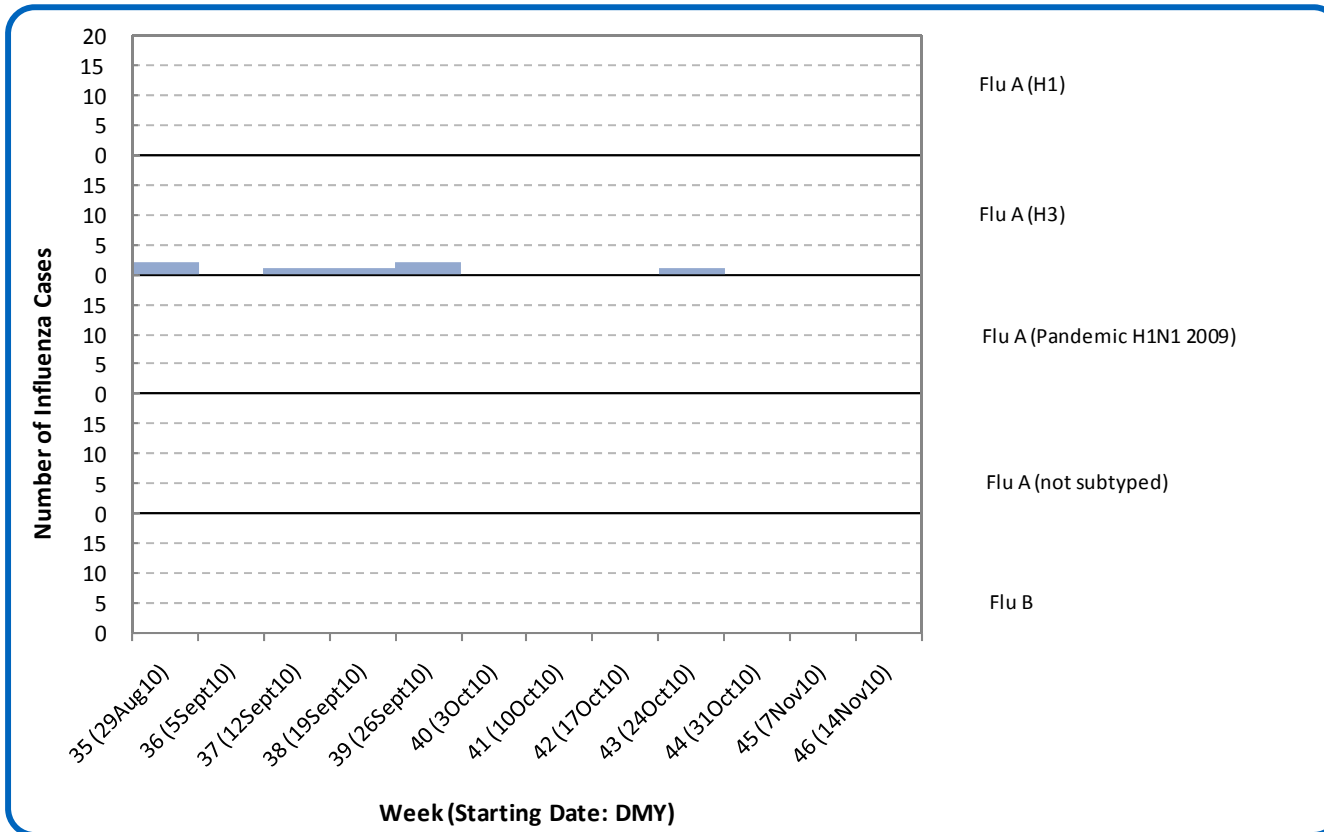
Figure 2B: Respiratory Specimen Percent Positive Rates, by virus type, by week, South Zone (2010)



Source: DIAL – Provincial Laboratory (includes cases with positive respiratory specimens received on or before Nov 20, 2010)
For more information on data definitions and sources see [Annex: Data Notes section at the end of this report](#)

[Back to first page](#)

Figure 2C: Laboratory confirmed Influenza cases, by subtype, by week South Zone (2010)



Source Source: Influenza Outbreak Response Toolkit – Provincial Laboratory (based on specimens classified on or before Nov 20, 2010). Note: specimens received before Nov 20, 2010 but classified to a subtype after this date will not be included in this graph.

For more information on data definitions and sources see [Annex: Data Notes section at the end of this report](#)

SURVEILLANCE AND HEALTH STATUS ASSESSMENT

Public Health Surveillance

Report Date: November 23, 2010

An influenza report targeted to the general public is available at: <http://www.health.alberta.ca/health-info/influenza-evidence.html>

[Back to first page](#)

Table 2A: Cumulative Influenza cases, by subtype, by age group, South Zone (Aug 29–Nov 21, 2010)

	Flu A (Seasonal-H1)		Flu A (Seasonal-H3)		Flu A (Pandemic H1N1 2009)		Flu A (not subtyped)		Flu B		Total	
	#	Rate (per 10,000)	#	Rate (per 10,000)	#	Rate (per 10,000)	#	Rate (per 10,000)	#	Rate (per 10,000)	#	Rate (per 10,000)
0 to <2 years	0	0.0	0	0.0	0	0.0	0	0.0	0	0.0	0	0.0
2 to <5 years	0	0.0	2	1.7	0	0.0	0	0.0	0	0.0	2	1.7
5 to <9 years	0	0.0	0	0.0	0	0.0	0	0.0	0	0.0	0	0.0
9 to <18 years	0	0.0	0	0.0	0	0.0	0	0.0	0	0.0	0	0.0
18 to <65 years	0	0.0	5	0.3	0	0.0	0	0.0	0	0.0	5	0.3
65 to <75 years	0	0.0	0	0.0	0	0.0	0	0.0	0	0.0	0	0.0
75+ years	0	0.0	0	0.0	0	0.0	0	0.0	0	0.0	0	0.0
Total	0	0.0	7	0.3	0	0.0	0	0.0	0	0.0	7	0.3

Source for Table 2A and 2B: Influenza Outbreak Response Toolkit – Provincial Laboratory (based on specimens classified on or before *Nov 20, 2010*).

Population data values used to calculate rates are for June 30, 2009 and are estimated using actual population values from the Alberta Health Care Insurance Plan (AHCIP) Registration File as of March 31, 2009.

For more information on data definitions and sources see [Annex: Data Notes section at the end of this report](#)

[Back to first page](#)

Attack rates in respiratory outbreaks

Since late August, there have been no respiratory outbreaks reported in the South Zone.

Influenza-like illness visits and “Left Without Being Seen”

This information is not available for the South Zone.

Respiratory related calls to Health Link Alberta

The number of calls to Health Link Alberta for cough or breathing difficulties by residents of the South Zone was 7% lower in week 46 (Nov 14 - 20) than in the previous week.

Percentage of visits to sentinel offices with Influenza-like illness (ILI)

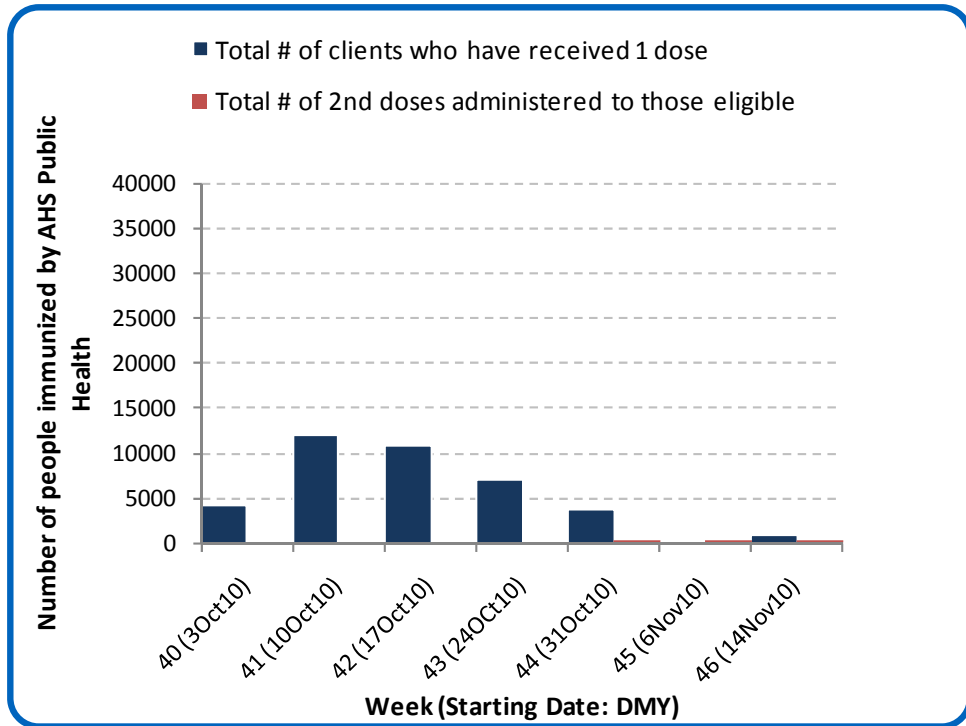
The percentage of ILI-related visits to sentinel physician offices by residents of the South Zone in week 45 (Nov 7 - 13) was lower than in Week 44.

Percentage of visits to sentinel offices with lower respiratory tract infection (LRTI)

There were no reports of LRTI-related visits to sentinel physician offices by residents of the South Zone in week 45 (Nov 7 - 13).

[Back to first page](#)

Figure 2D: Number Immunized by AHS (Public Health), by week, South Zone (2010)



Source: AHS Zones (doses do not include those delivered by external providers)
 Note: Immunization coverage rates will be reported at the end of the influenza season
 For more information on data definitions and sources see [Annex: Data Notes section at the end of this report](#)

Table 2B: AHS (Public Health) Delivered Influenza Immunizations (with Cumulative totals), by priority group, South Zone (2010)

[Back to first page](#)

Priority Group		Number Immunized (Week 46 – Nov 14-20, 2010)	Cumulative Number Immunized (since Oct 3, 2010)
Long term care staff		3	582
Health care workers		20	1,478
Pregnant women		14	243
Residents of long term care		2	719
65 years of age and over		209	14,976
All children 6 months up to and including 23 months*	Dose #1	45	939
	Dose #2	24	40
All children 24 months up to and including 59 months*	Dose #1	64	1,599
	Dose #2	9	9
High risk: 5 years up to and including 8 years*	Dose #1	14	411
	Dose #2	0	0
High risk: 9 years up to and including 64 years		97	3,795
Healthy: 5 years up to and including 8 years*	Dose #1	34	1,232
	Dose #2	1	2
Healthy: 9 years up to and including 64 years		382	13,067
Total number of clients who have received 1 dose		884	39,041
Total number of 2nd doses administered to those eligible*		34	51

Source: AHS Zones (doses do not include those delivered by external providers)

*Children under 9 years of age who have not received at least one dose of seasonal influenza vaccine in past years require two doses, given at least four weeks apart.

Note: Immunization coverage rates will be reported at the end of the influenza season

For more information on data definitions and sources see [Annex: Data Notes section at the end of this report](#)

SURVEILLANCE AND HEALTH STATUS ASSESSMENT

Public Health Surveillance

Report Date: November 23, 2010

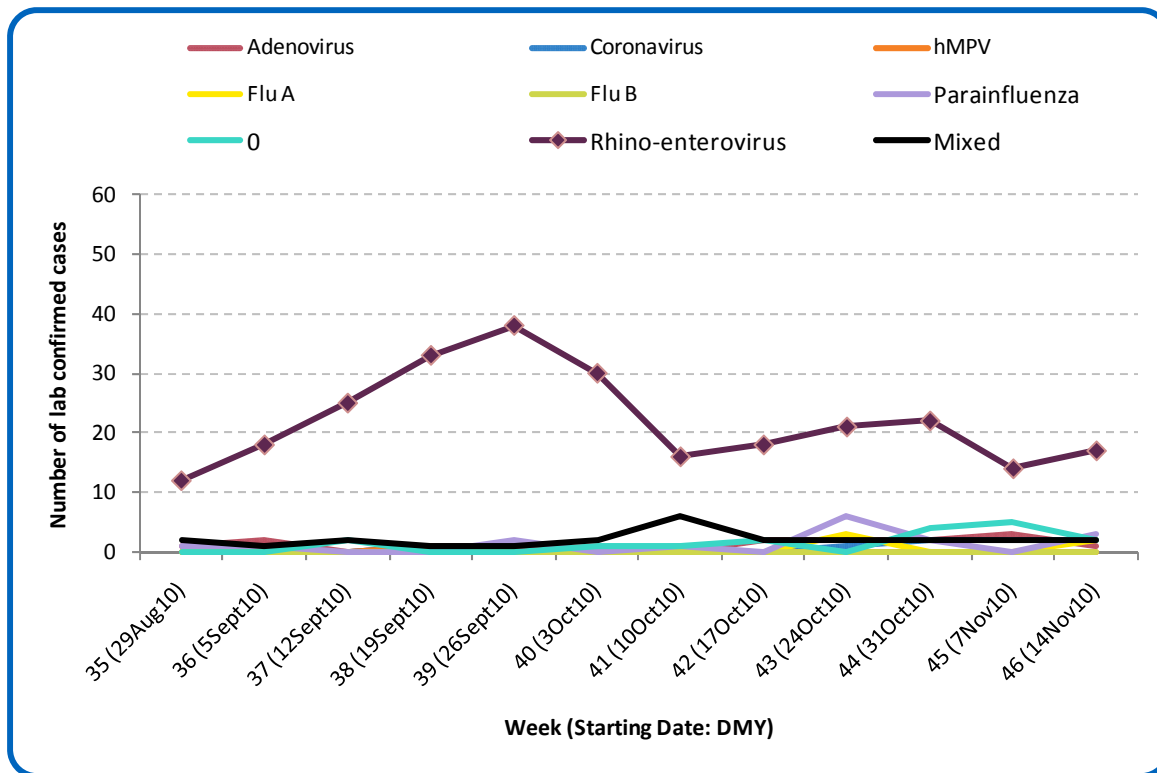
An influenza report targeted to the general public is available at: <http://www.health.alberta.ca/health-info/influenza-evidence.html>

SECTION 3: ZONE 2 - CALGARY

[Back to first page](#)

The predominant respiratory virus in the Calgary Zone is still rhino-enterovirus. Two new cases of influenza A (H3) were confirmed in the Calgary Zone last week. Since late August, a total of five cases influenza have been confirmed in the Calgary Zone. One case was in an adult 65 to less than 75 years of age, two were in adults aged 75 years and over and the two most recent cases were in adults 18 to less than 65 years of age.

Figure 3A: Laboratory confirmed respiratory virus cases, by virus type, by week, Calgary Zone (2010)



Source: DIAL – Provincial Laboratory (includes cases with positive respiratory specimens received on or before Nov 20, 2010)
For more information on data definitions and sources see [Annex: Data Notes section at the end of this report](#)

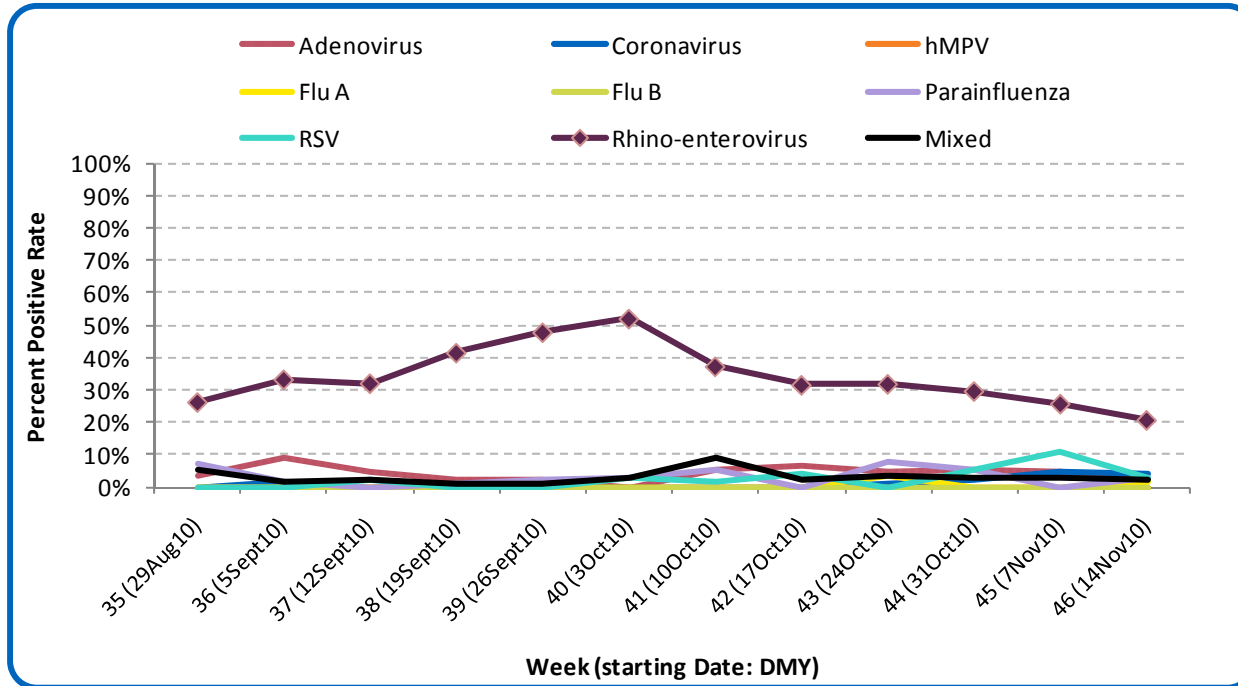
SURVEILLANCE AND HEALTH STATUS ASSESSMENT

Public Health Surveillance
Report Date: November 23, 2010

An influenza report targeted to the general public is available at: <http://www.health.alberta.ca/health-info/influenza-evidence.html>

[Back to first page](#)

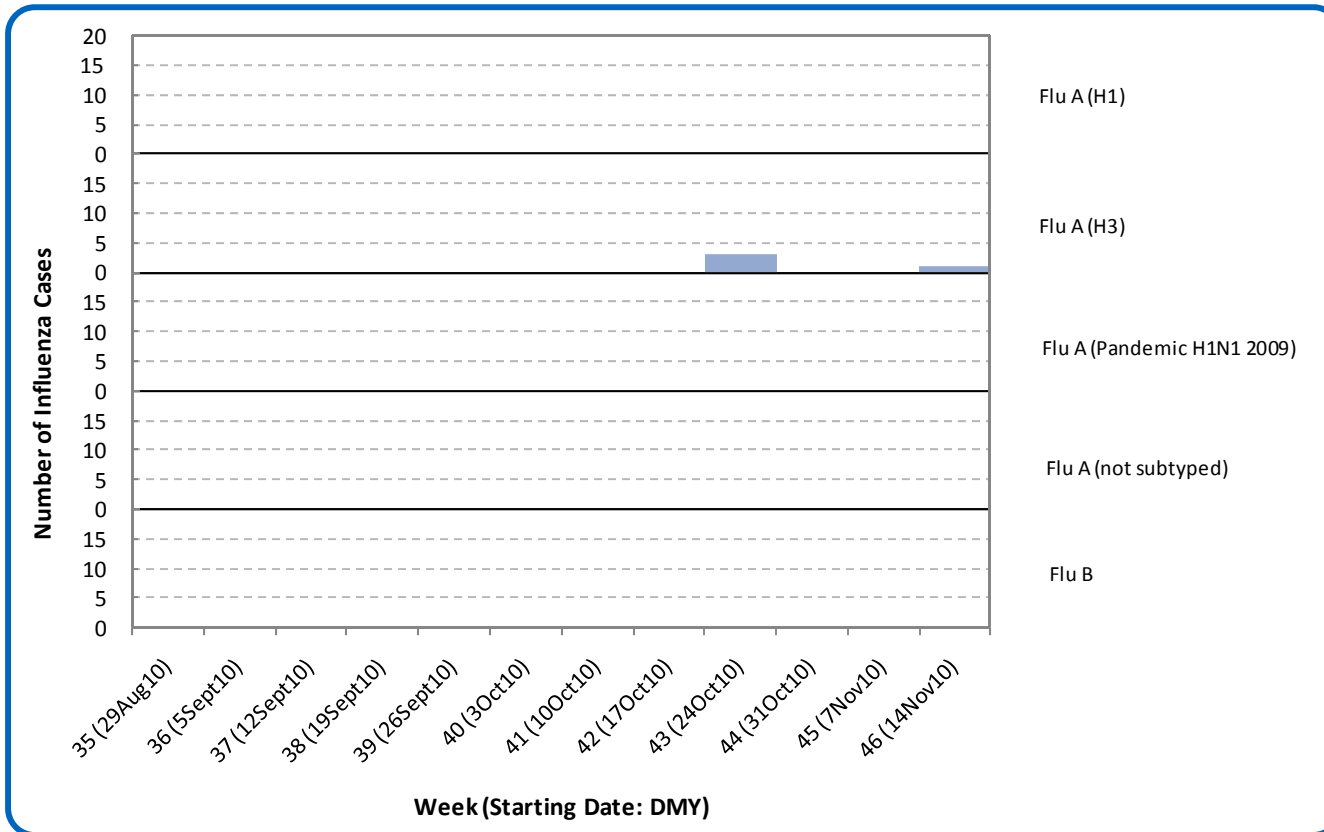
Figure 3B: Respiratory Specimen Percent Positive Rates, by virus type, by week, Calgary Zone (2010)



Source: DIAL – Provincial Laboratory (includes cases with positive respiratory specimens received on or before Nov 20, 2010)
For more information on data definitions and sources see [Annex: Data Notes section at the end of this report](#)

[Back to first page](#)

Figure 3C: Laboratory confirmed Influenza cases, by subtype, by week, Calgary Zone (2010)



Source: Influenza Outbreak Response Toolkit – Provincial Laboratory (based on specimens classified on or before Nov 20, 2010). Note: specimens received before Nov 20, 2010 but classified to a subtype after this date will not be included in this graph.

For more information on data definitions and sources see [Annex: Data Notes section at the end of this report](#)

SURVEILLANCE AND HEALTH STATUS ASSESSMENT

Public Health Surveillance

Report Date: November 23, 2010

An influenza report targeted to the general public is available at: <http://www.health.alberta.ca/health-info/influenza-evidence.html>

[Back to first page](#)

Table 3A: Cumulative Influenza cases, by subtype, by age group, Calgary Zone (Aug 29 – Nov 21, 2010)

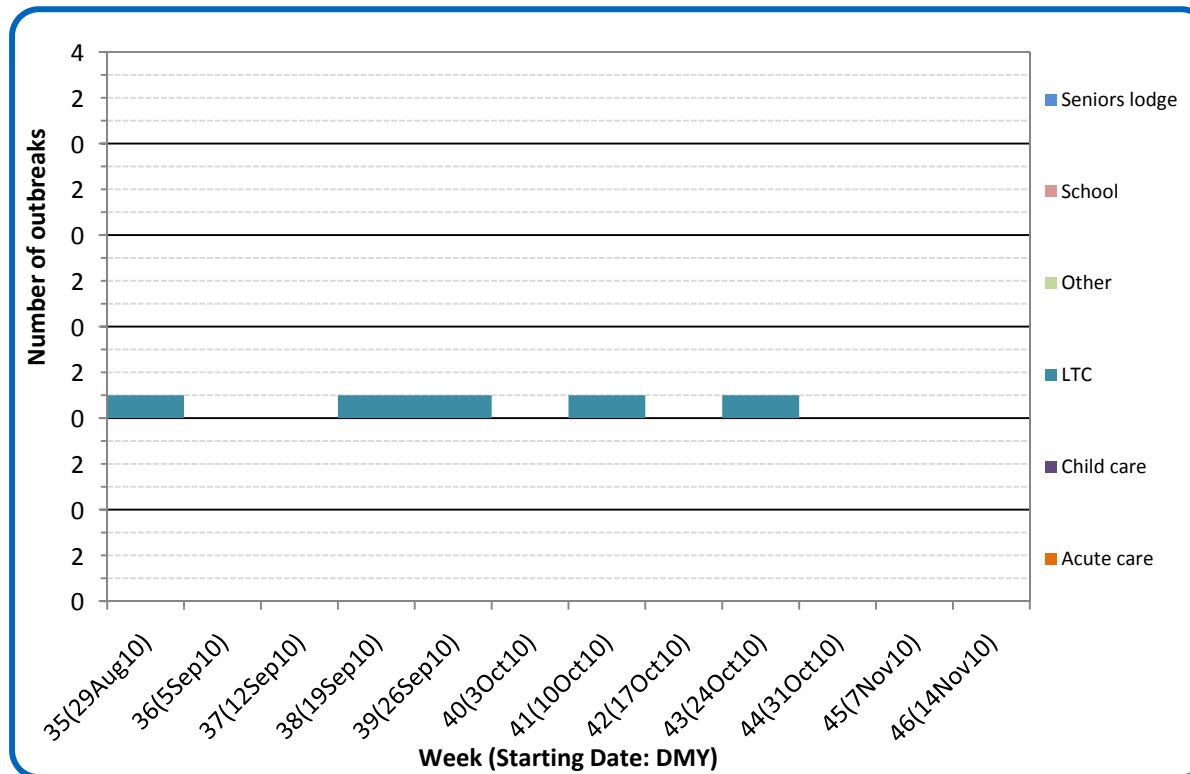
	Flu A (Seasonal-H1)		Flu A (Seasonal-H3)		Flu A (Pandemic H1N1 2009)		Flu A (not subtyped)		Flu B		Total	
	#	Rate (per 10,000)	#	Rate (per 10,000)	#	Rate (per 10,000)	#	Rate (per 10,000)	#	Rate (per 10,000)	#	Rate (per 10,000)
0 to <2 years	0	0.0	0	0.0	0	0.0	0	0.0	0	0.0	0	0.0
2 to <5 years	0	0.0	0	0.0	0	0.0	0	0.0	0	0.0	0	0.0
5 to <9 years	0	0.0	0	0.0	0	0.0	0	0.0	0	0.0	0	0.0
9 to <18 years	0	0.0	0	0.0	0	0.0	0	0.0	0	0.0	0	0.0
18 to <65 years	0	0.0	2	<0.1	0	0.0	0	0.0	0	0.0	2	<0.1
65 to <75 years	0	0.0	1	0.1	0	0.0	0	0.0	0	0.0	1	0.1
75+ years	0	0.0	2	0.3	0	0.0	0	0.0	0	0.0	2	0.3
Total	0	0.0	5	<0.1	0	0.0	0	0.0	0	0.0	5	<0.1

Source for Table 3A and 3B: Influenza Outbreak Response Toolkit – Provincial Laboratory (based on specimens classified on or before Nov 20, 2010). Population data values used to calculate rates are for June 30, 2009 and are estimated using actual population values from the Alberta Health Care Insurance Plan (AHCIP) Registration File as of March 31, 2009. For more information on data definitions and sources see [Annex: Data Notes section at the end of this report](#)

[Back to first page](#)

There have been no reports of respiratory outbreaks from the Calgary zone since Week 43 (Oct 24 – Oct 30).

Figure 3D: Reported respiratory outbreaks, by facility type, by week, Calgary Zone (2010)

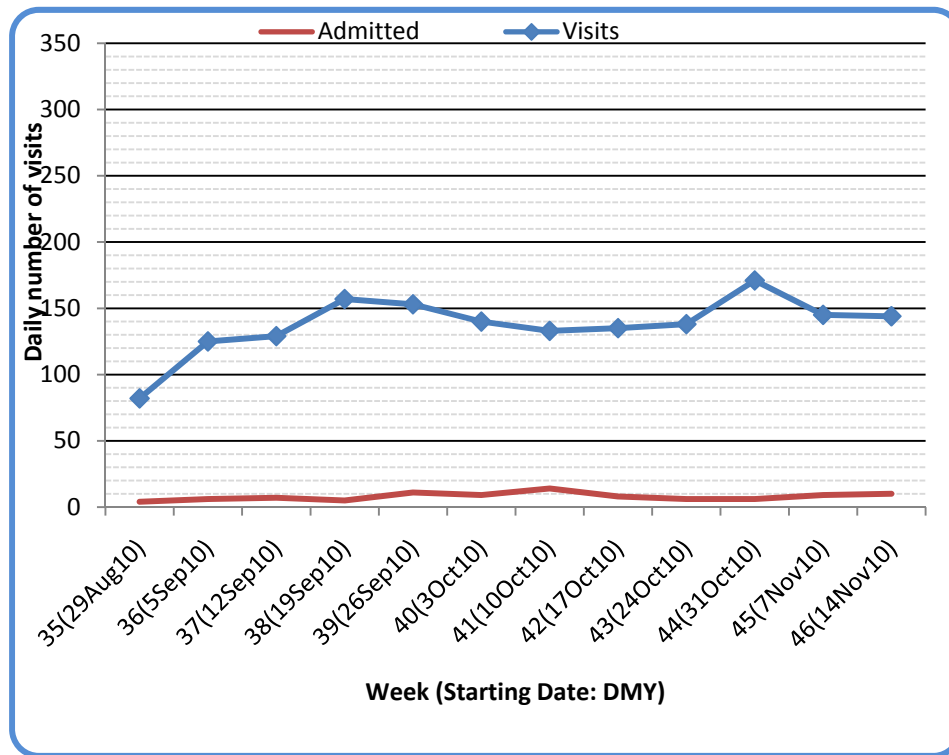


Source: Alberta Outbreak Reporting Form as of 23:59 on November 20, 2010.
For more information on data definitions and sources see [Annex: Data Notes section at the end of this report](#)

[Back to first page](#)

The number of visits to emergency departments/urgent care centers, hospital admissions and the number of visits with cough symptoms that left EDs without being seen in the city of Calgary in Week 46 (Nov 14 - 20) were all similar to those in Week 45.

Figure 3E: Visits to urban emergency departments/urgent care centers in the City of Calgary with cough symptoms and admissions to hospitals, by week (2010)



Source: Alberta Real Time Syndromic Surveillance Net (ARTSSN) as of 23:59 on November 20, 2010. For more information on data definitions and sources see [Annex: Data Notes section at the end of this report](#)

SURVEILLANCE AND HEALTH STATUS ASSESSMENT

Public Health Surveillance

Report Date: November 23, 2010

An influenza report targeted to the general public is available at: <http://www.health.alberta.ca/health-info/influenza-evidence.html>

[Back to first page](#)

Attack rates in respiratory outbreaks

There were no reports of respiratory outbreaks from the Calgary Zone in Week 46 (Nov 14–20).

Influenza-like illness visits and “Left Without Being seen”

The number of visits to urban emergency departments/ urgent care centers (EDs) for influenza-like illness (ILI) in the City of Calgary increased by 44% in Week 46 (Nov 14 – 20) from the previous week. The number of hospital admissions and visits of patients with ILI who left EDs without being seen also increased significantly from the previous week. Both the ILI visits and admissions seemed to have resumed the upward trend established in the weeks prior to Week 45.

Respiratory related calls to Health Link Alberta

The number of calls to Health Link Alberta for cough or breathing difficulties by residents of the Calgary Zone was 13% lower in Week 46 (Nov 14 – 20) than in Week 45, matching the downward trend seen in ED visits with cough symptoms for the same period.

Percentage of visits to sentinel offices with influenza-like illness (ILI)

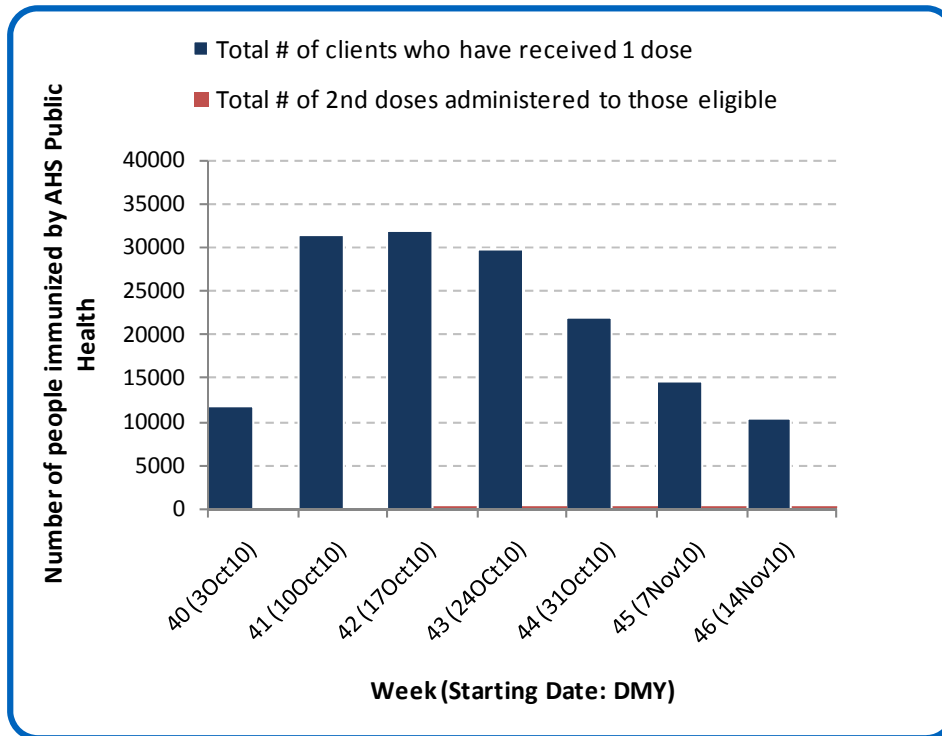
The percentage of ILI-related visits to sentinel physician offices by residents of the Calgary Zone remained very low in Week 45 (Nov 7-13); no increasing trend has developed in the past 6 weeks.

Percentage of visits to sentinel offices with lower respiratory tract infection (LRTI)

The percentage of LRTI-related visits to sentinel physician offices by residents of the Calgary Zone in Week 45 (Nov 7-13) was nearly twice as high as that in Week 44. The combined percentage for ILI- and LRTI-related visits was 67% higher in Week 45 than in Week 44.

[Back to first page](#)

Figure 3F: Number Immunized by AHS (Public Health), by week, Calgary Zone (2010)



Source: AHS Zones (doses do not include those delivered by external providers)
 Note: Immunization coverage rates will be reported at the end of the influenza season
 For more information on data definitions and sources see [Annex: Data Notes section at the end of this report](#)

SURVEILLANCE AND HEALTH STATUS ASSESSMENT

Public Health Surveillance

Report Date: November 23, 2010

An influenza report targeted to the general public is available at: <http://www.health.alberta.ca/health-info/influenza-evidence.html>

Table 3B: AHS (Public Health) Delivered Influenza Immunizations (with Cumulative totals), by priority group, Calgary Zone (2010)

[Back to first page](#)

Priority Group	Number Immunized (Week 46 – Nov 14-20, 2010)	Cumulative Number Immunized (since Oct 3, 2010)
Long term care staff	13	420
Health care workers	219	4,717
Pregnant women	122	1,315
Residents of long term care	16	698
65 years of age and over	1,042	41,633
All children 6 months up to and including 23 months*	Dose #1	805
	Dose #2	200
All children 24 months up to and including 59 months*	Dose #1	732
	Dose #2	50
High risk: 5 years up to and including 8 years*	Dose #1	115
	Dose #2	2
High risk: 9 years up to and including 64 years	1,148	16,589
Healthy: 5 years up to and including 8 years*	Dose #1	490
	Dose #2	25
Healthy: 9 years up to and including 64 years	5,550	65,482
Total number of clients who have received 1 dose	10,252	151,566
Total number of 2nd doses administered to those eligible*	277	437

Source: AHS Zones (doses do not include those delivered by external providers)

*Children under 9 years of age who have not received at least one dose of seasonal influenza vaccine in past years require two doses, given at least four weeks apart.

Note: Immunization coverage rates will be reported at the end of the influenza season

For more information on data definitions and sources see [Annex: Data Notes section at the end of this report](#)

SURVEILLANCE AND HEALTH STATUS ASSESSMENT

Public Health Surveillance

Report Date: November 23, 2010

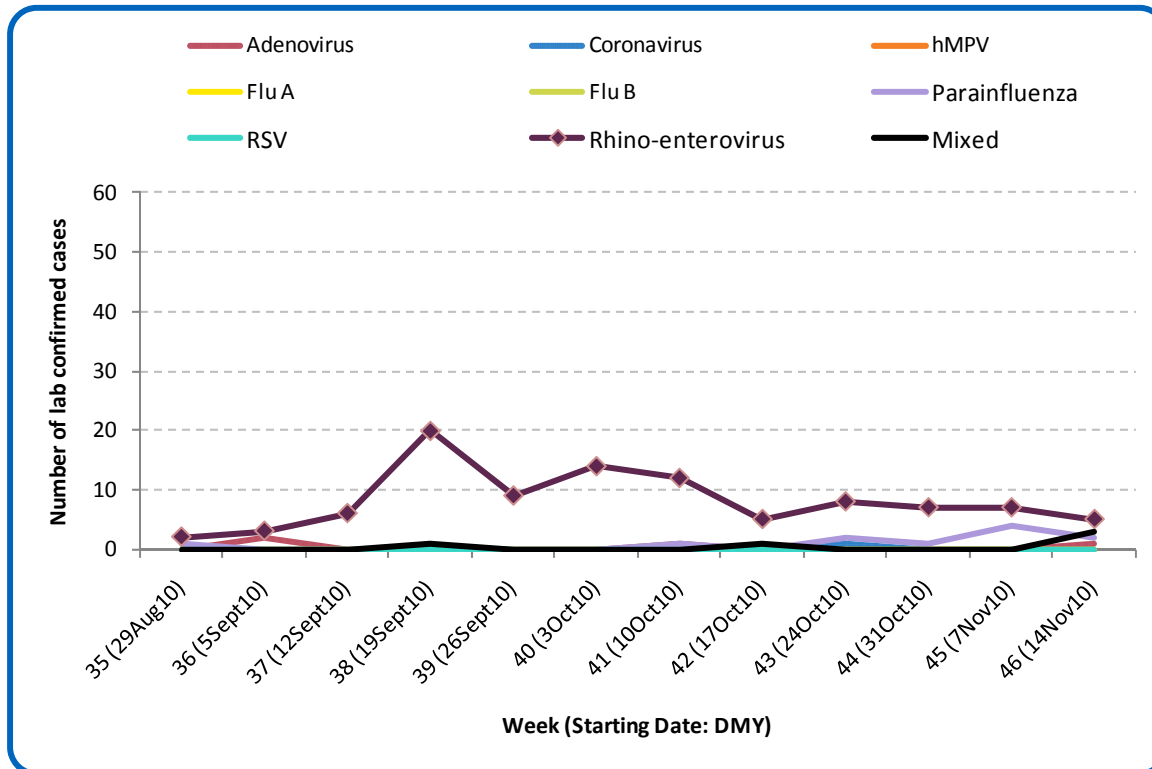
An influenza report targeted to the general public is available at: <http://www.health.alberta.ca/health-info/influenza-evidence.html>

SECTION 4: ZONE 3 - CENTRAL

[Back to first page](#)

There have been no laboratory confirmed cases of influenza in the Central Zone this season. Rhino-enterovirus continues to be the predominant respiratory virus circulating in the Central Zone. Parainfluenza activity has increased slightly in the past several weeks.

Figure 4A: Laboratory confirmed respiratory virus cases, by virus type, by week, Central Zone (2010)



Source: DIAL – Provincial Laboratory (includes cases with positive respiratory specimens received on or before Nov 20, 2010)
For more information on data definitions and sources see [Annex: Data Notes section at the end of this report](#)

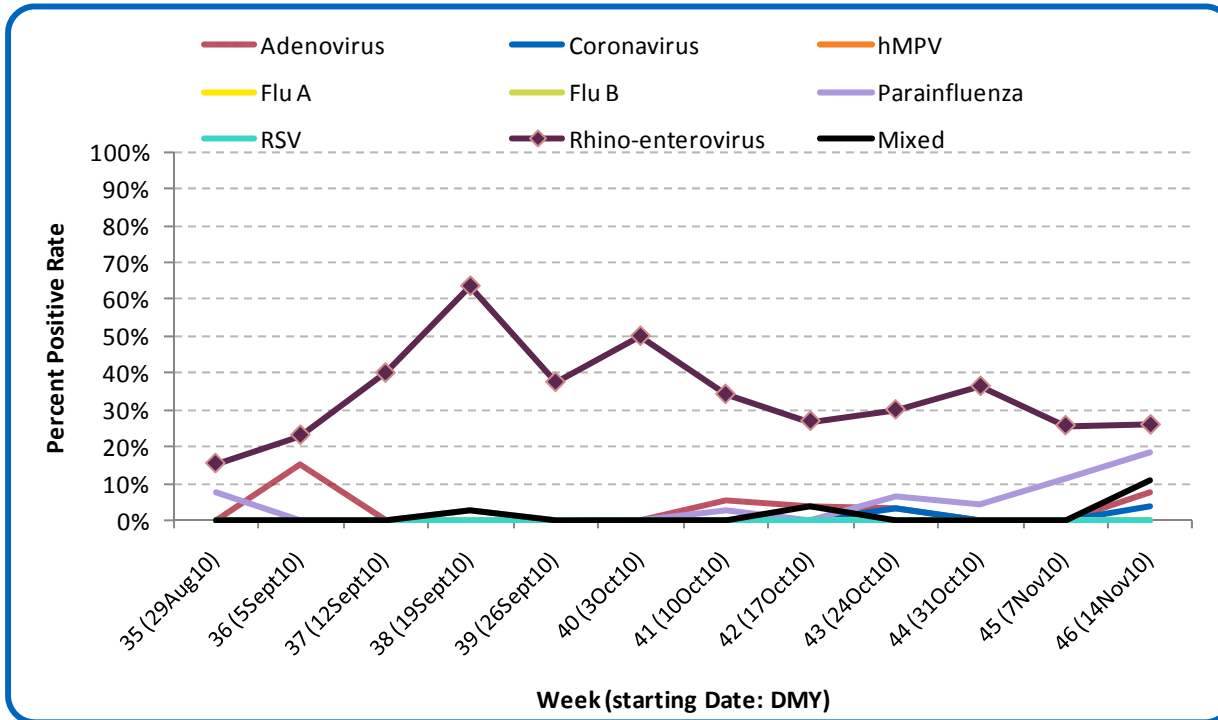
SURVEILLANCE AND HEALTH STATUS ASSESSMENT

Public Health Surveillance
Report Date: November 23, 2010

An influenza report targeted to the general public is available at: <http://www.health.alberta.ca/health-info/influenza-evidence.html>

Figure 4B: Respiratory Specimen Percent Positive Rates, by virus type, by week, Central Zone (2010)

[Back to first page](#)



Source: DIAL – Provincial Laboratory (includes cases with positive respiratory specimens received on or before Nov 20, 2010)
For more information on data definitions and sources see [Annex: Data Notes section at the end of this report](#)

[Back to first page](#)

Attack Rates in respiratory outbreaks

There have been no laboratory confirmed respiratory outbreaks reported in the Central Zone since late August.

Influenza-like illness visits and “Left Without Being seen”

There are no data available from this zone.

Respiratory related calls to Health Link Alberta

The number of calls to Health Link Alberta by residents of the Central Zone for cough or breathing difficulties was 23% lower in week 46 than in the previous week, returning to the level seen in the weeks prior to Week 45.

Percentage of visits to sentinel offices with Influenza-like illness (ILI)

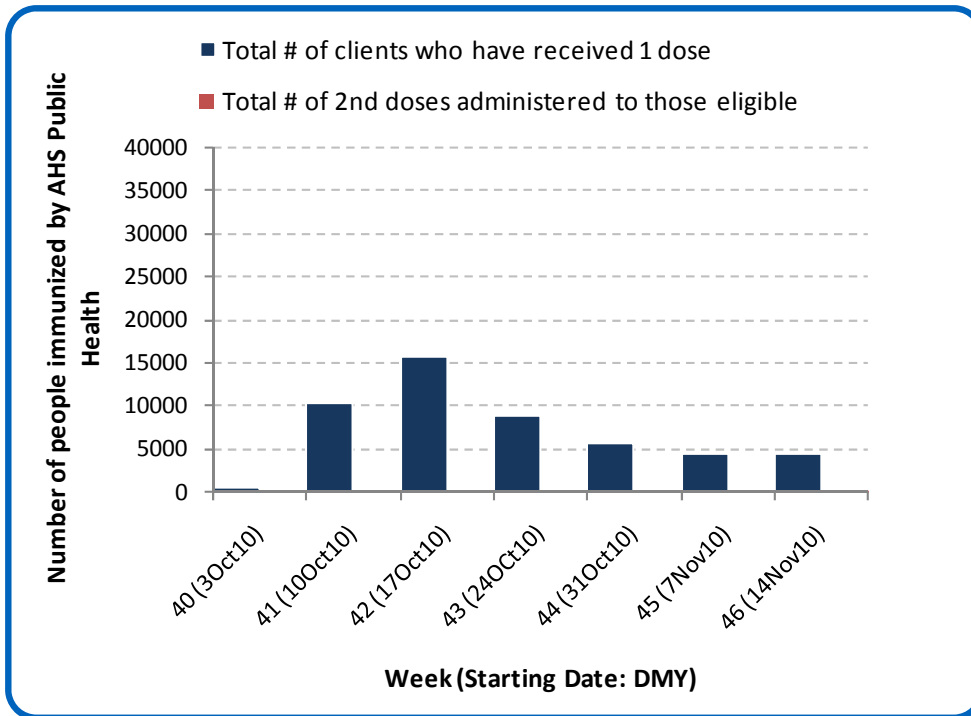
There were reports of ILI-related visits to sentinel physician offices by residents of the Central Zone in Week 45 (Nov 7-13), but the percentage was considerably below 1%.

Percentage of visits to sentinel offices with lower respiratory tract infection (LTRI)

The percentage of LTRI-related visits to sentinel physician offices by residents of the Central Zone was 30% lower in Week 45 (Nov 7-13) than in Week 44.

[Back to first page](#)

Figure 4C: Number Immunized by AHS (Public Health), by week, Central Zone (2010)



Source: AHS Zones (doses do not include those delivered by external providers)
 Note: Immunization coverage rates will be reported at the end of the influenza season
 For more information on data definitions and sources see [Annex: Data Notes section at the end of this report](#)

[Back to first page](#)

Table 4A: AHS (Public Health) Delivered Influenza Immunizations (with Cumulative totals), by priority group, Central Zone (2010)

Priority Group	Number Immunized (Week 46 – Nov 14-20, 2010)	Cumulative Number Immunized (since Oct 3, 2010)
Long term care staff	16	341
Health care workers	118	2,162
Pregnant women	41	308
Residents of long term care	3	983
65 years of age and over	1,307	19,731
All children 6 months up to and including 23 months*	Dose #1	171
	Dose #2	55
All children 24 months up to and including 59 months*	Dose #1	223
	Dose #2	12
High risk: 5 years up to and including 8 years*	Dose #1	52
	Dose #2	2
High risk: 9 years up to and including 64 years	548	5,602
Healthy: 5 years up to and including 8 years*	Dose #1	170
	Dose #2	10
Healthy: 9 years up to and including 64 years	1,899	16,426
Total number of clients who have received 1 dose	4,548	50,331
Total number of 2nd doses administered to those eligible*	79	100

Source: AHS Zones (doses do not include those delivered by external providers)

*Children under 9 years of age who have not received at least one dose of seasonal influenza vaccine in past years require two doses, given at least four weeks apart.

Note: Immunization coverage rates will be reported at the end of the influenza season

For more information on data definitions and sources see [Annex: Data Notes section at the end of this report](#)

SURVEILLANCE AND HEALTH STATUS ASSESSMENT

Public Health Surveillance

Report Date: November 23, 2010

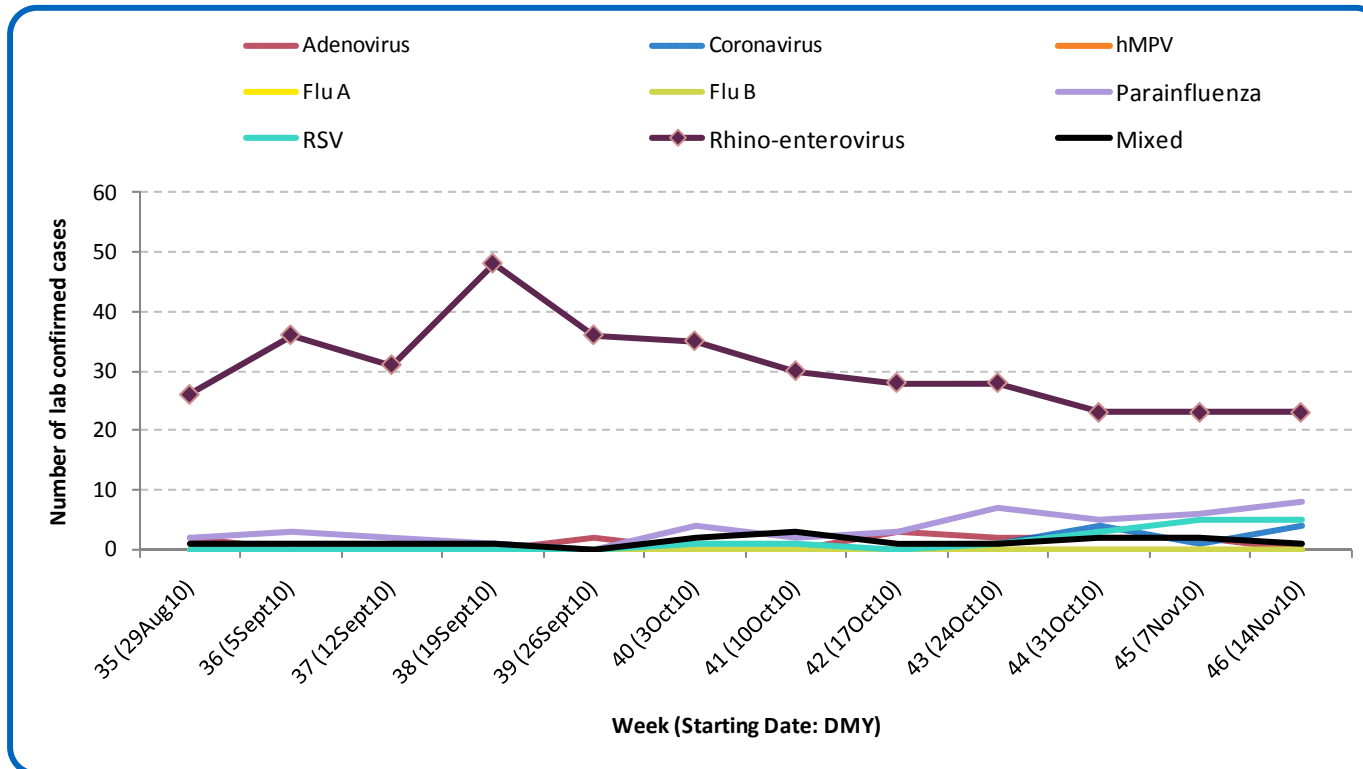
An influenza report targeted to the general public is available at: <http://www.health.alberta.ca/health-info/influenza-evidence.html>

SECTION 5: ZONE 4 – EDMONTON

[Back to first page](#)

Rhino-enterovirus is still the predominant respiratory virus circulating in the Edmonton Zone. Parainfluenza and RSV activity have shown an increasing trend in recent weeks. There have been no laboratory confirmed cases of influenza in the Edmonton Zone this season.

Figure 5A: Laboratory confirmed respiratory virus cases, by virus type, by week, Edmonton Zone (2010)



Source: DIAL – Provincial Laboratory (includes cases with positive respiratory specimens received on or before Nov 20, 2010)
For more information on data definitions and sources see [Annex: Data Notes section at the end of this report](#)

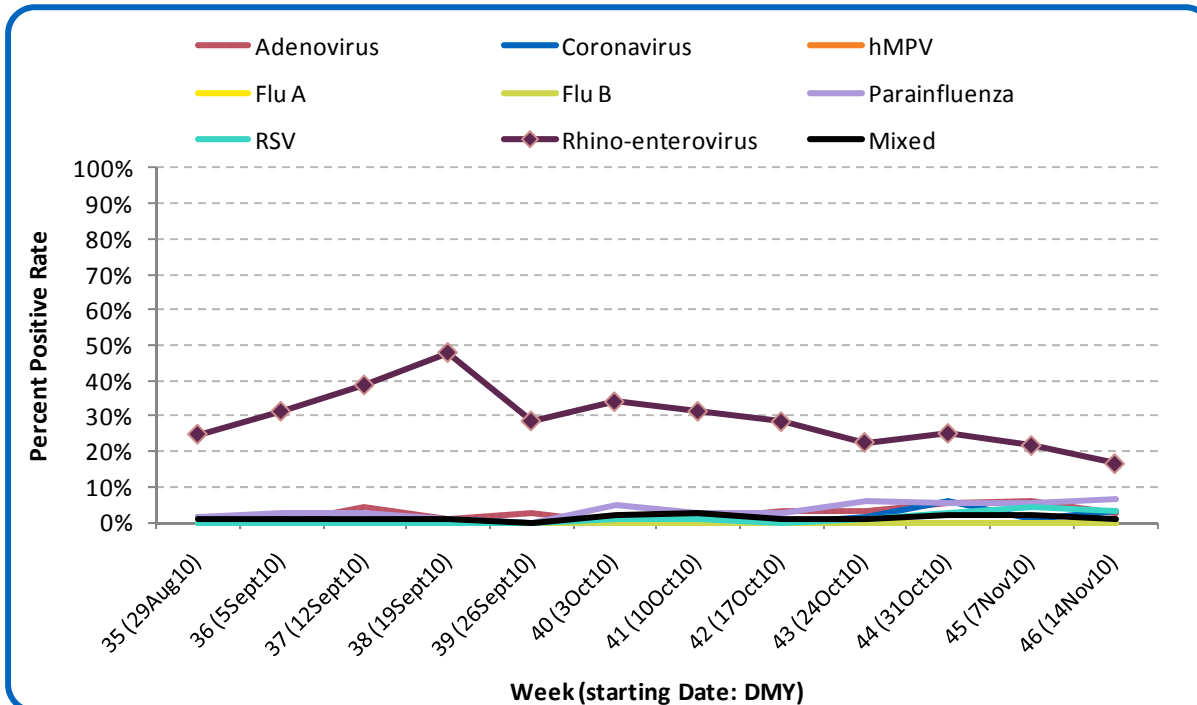
SURVEILLANCE AND HEALTH STATUS ASSESSMENT

Public Health Surveillance
Report Date: November 23, 2010

An influenza report targeted to the general public is available at: <http://www.health.alberta.ca/health-info/influenza-evidence.html>

[Back to first page](#)

Figure 5B: Respiratory Specimen Percent Positive Rates, by virus type, by week, Edmonton Zone (2010)

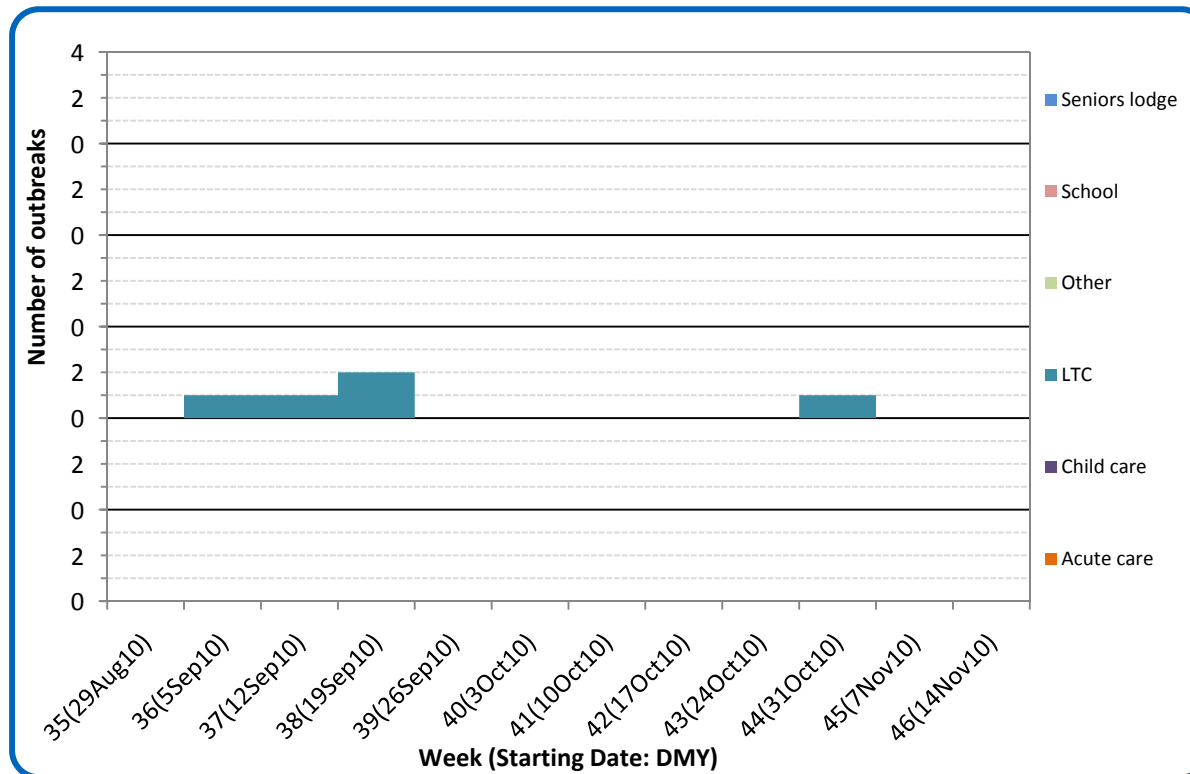


Source: DIAL – Provincial Laboratory (includes cases with positive respiratory specimens received on or before Nov 20, 2010)
For more information on data definitions and sources see [Annex: Data Notes section at the end of this report](#)

[Back to first page](#)

There have been no new respiratory outbreaks reported in the Edmonton Zone since Week 44 (Oct 31 – Nov 6).

Figure 5C: Reported respiratory outbreaks, by facility type, by week, Edmonton Zone (2010)



Source: Alberta Outbreak Reporting Form as of 23:59 on November 20, 2010.
For more information on data definitions and sources see [Annex: Data Notes section at the end of this report](#)

SURVEILLANCE AND HEALTH STATUS ASSESSMENT

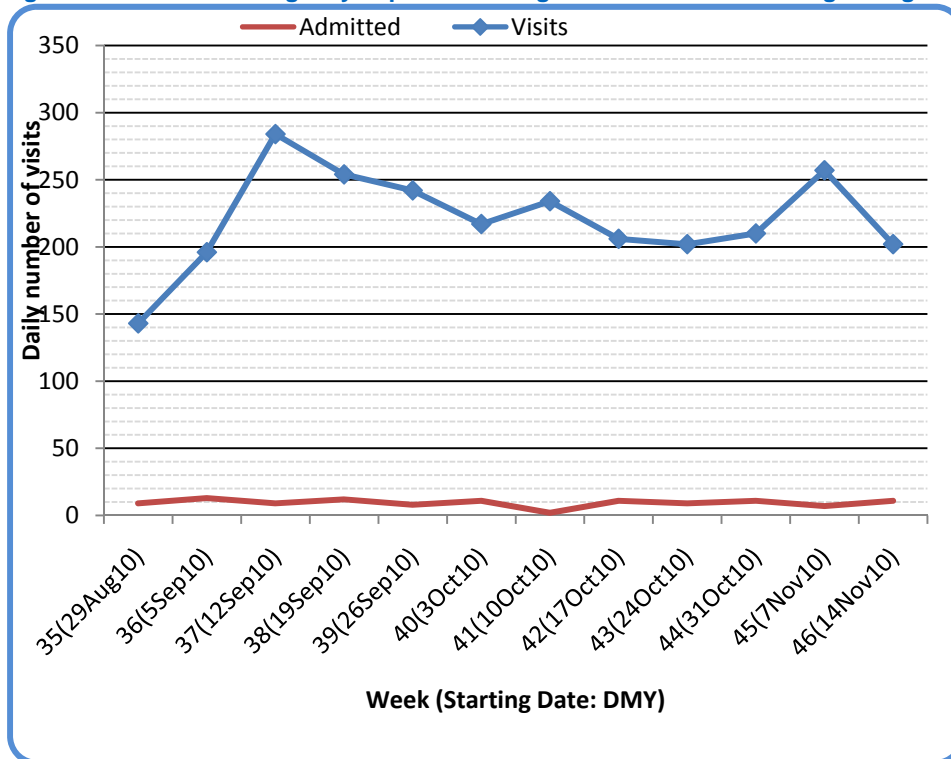
Public Health Surveillance
Report Date: November 23, 2010

An influenza report targeted to the general public is available at: <http://www.health.alberta.ca/health-info/influenza-evidence.html>

[Back to first page](#)

The number of visits to nine emergency departments/urgent care centers in the Edmonton Zone for cough/congestion in week 46 (Nov 14–20) decreased from the previous week. However, admissions to hospitals were 38% higher. The number of visits of patients with cough/congestion symptoms and who left the EDs without being seen were 20% lower in last week than in the previous week.

Figure 5D: Visits to emergency departments/urgent care centers for cough/congestion and admissions to hospitals, by week, Edmonton Zone (2010)



Source: Alberta Real Time Syndromic Surveillance (ARTSSN) as of 23:59 on November 20, 2010. For more information on data definitions and sources see [Annex: Data Notes section at the end of this report](#)

SURVEILLANCE AND HEALTH STATUS ASSESSMENT

Public Health Surveillance
Report Date: November 23, 2010

An influenza report targeted to the general public is available at: <http://www.health.alberta.ca/health-info/influenza-evidence.html>

[Back to first page](#)

Attack rates in respiratory outbreaks

No respiratory outbreaks were reported from the Edmonton Zone in Week 46 (Nov 14 -20).

Influenza-like illness visits and “Left Without Being seen”

The number of visits to emergency departments/urgent care centers , the number of hospital admissions and the number of visits to ED’s for people with ILI that left without being seen were all lower last week than in Week 45, matching the pattern for visits with cough/congestion symptoms.

Respiratory related calls to Health Link Alberta

The number of calls to Health Link Alberta by residents of the Edmonton Zone for cough or breathing difficulties was 10% higher in Week 46 than in Week 45, continuing an upward trend established since early September.

Percentage of visits to sentinel offices with influenza-like illness (ILI)

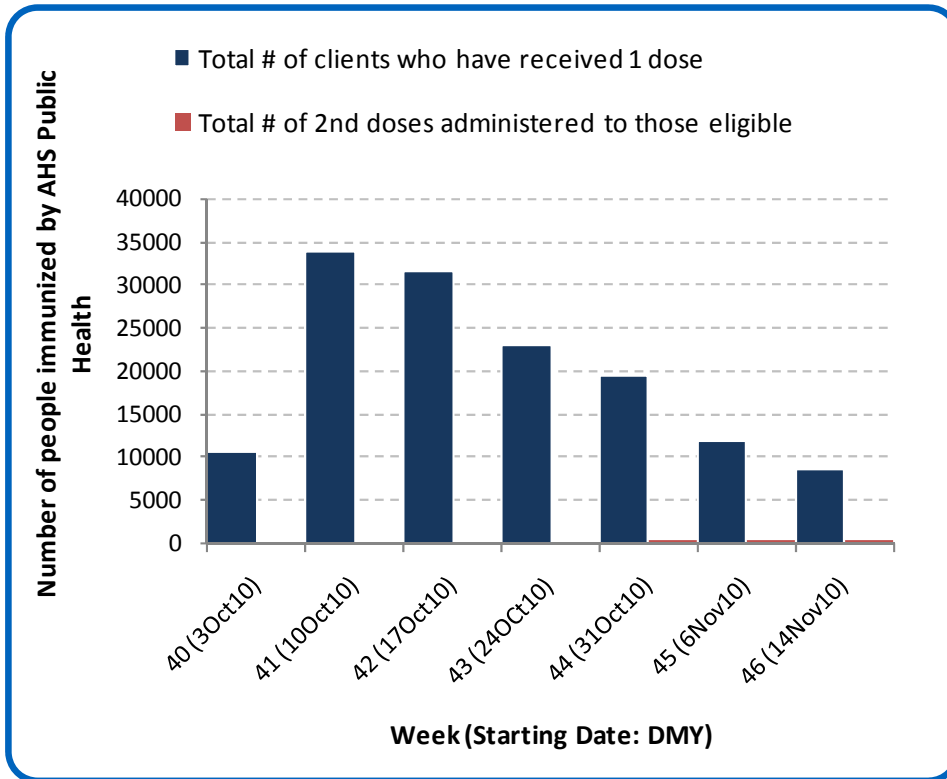
The percentage of ILI-related visits to sentinel physician offices by residents of the Edmonton Zone was 15% lower in Week 45 (Nov 7-13) than in Week 44.

Percentage of visits to sentinel offices with lower respiratory tract infection (LRTI)

The percentage of LRTI-related visits to sentinel physician offices was 35% higher in Week 45 (Nov 7-13) than in Week 44. This brought down the combined percentage of ILI- and LRTI-related visits by 17% in Week 45 from the Week 44 level.

[Back to first page](#)

Figure 5E: Number Immunized by AHS (Public Health), by week, Edmonton Zone (2010)



Source: AHS Zones (doses do not include those delivered by external providers)
 Note: Immunization coverage rates will be reported at the end of the influenza season
 For more information on data definitions and sources see [Annex: Data Notes section at the end of this report](#)

[Back to first page](#)

Table 5A: AHS (Public Health) Delivered Influenza Immunizations (with Cumulative totals), by priority group, Edmonton Zone (2010)

Priority Group	Number Immunized (Week 46 – Nov 14-20, 2010)	Cumulative Number Immunized (since Oct 3, 2010)
Long term care staff	10	307
Health care workers	159	4,184
Pregnant women	96	1,086
Residents of long term care	2	1,022
65 years of age and over	1,096	45,757
All children 6 months up to and including 23 months*	Dose #1	457
	Dose #2	208
All children 24 months up to and including 59 months*	Dose #1	523
	Dose #2	56
High risk: 5 years up to and including 8 years*	Dose #1	100
	Dose #2	3
High risk: 9 years up to and including 64 years	984	14,788
Healthy: 5 years up to and including 8 years*	Dose #1	372
	Dose #2	33
Healthy: 9 years up to and including 64 years	4,802	56,922
Total number of clients who have received 1 dose	8,601	138,947
Total number of 2nd doses administered to those eligible*	300	479

Source: AHS Zones (doses do not include those delivered by external providers)

*Children under 9 years of age who have not received at least one dose of seasonal influenza vaccine in past years require two doses, given at least four weeks apart.

Note: Immunization coverage rates will be reported at the end of the influenza season

For more information on data definitions and sources see [Annex: Data Notes section at the end of this report](#)

SURVEILLANCE AND HEALTH STATUS ASSESSMENT

Public Health Surveillance

Report Date: November 23, 2010

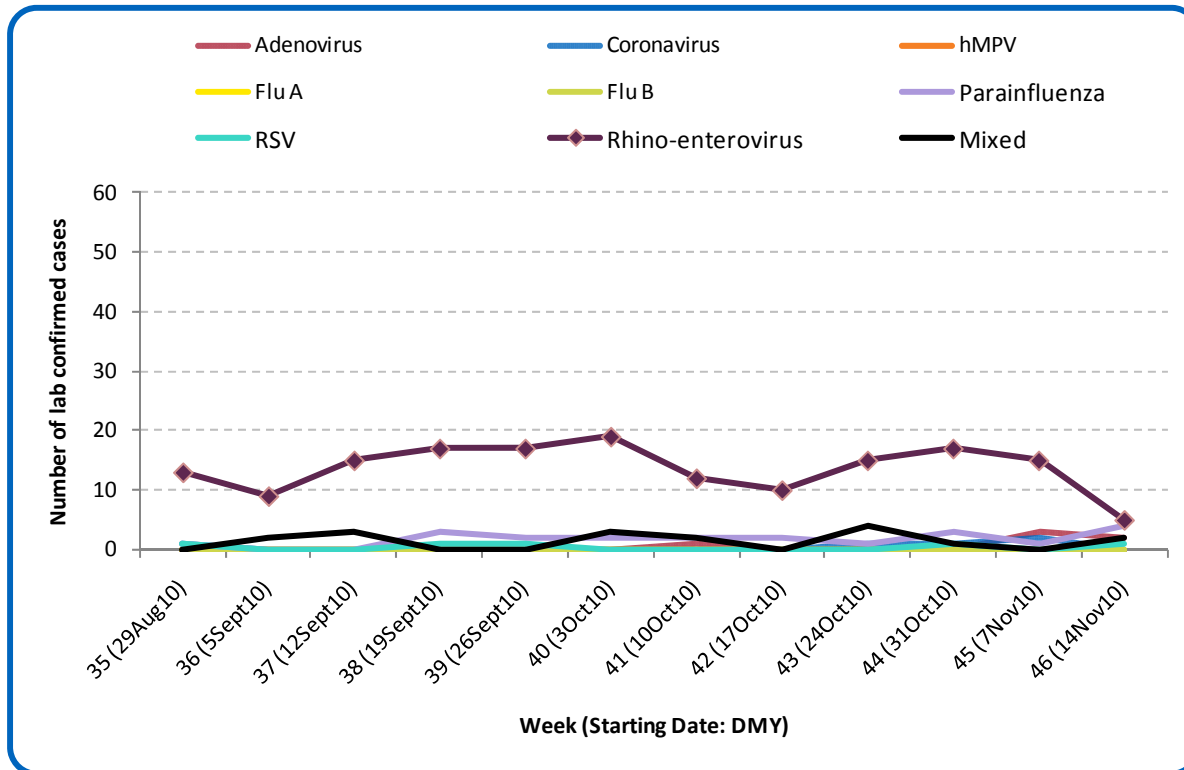
An influenza report targeted to the general public is available at: <http://www.health.alberta.ca/health-info/influenza-evidence.html>

SECTION 6: ZONE 5 – NORTH

[Back to first page](#)

Rhino-enterovirus is still the predominant respiratory virus circulating in the North Zone. Parainfluenza activity has increased gradually in the past two weeks. There have been no laboratory confirmed cases of influenza in the North Zone this season.

Figure 6A: Laboratory confirmed respiratory virus cases, by virus type, by week, North Zone (2010)



Source: DIAL – Provincial Laboratory (includes cases with positive respiratory specimens received on or before Nov 20, 2010)
For more information on data definitions and sources see [Annex: Data Notes section at the end of this report](#)

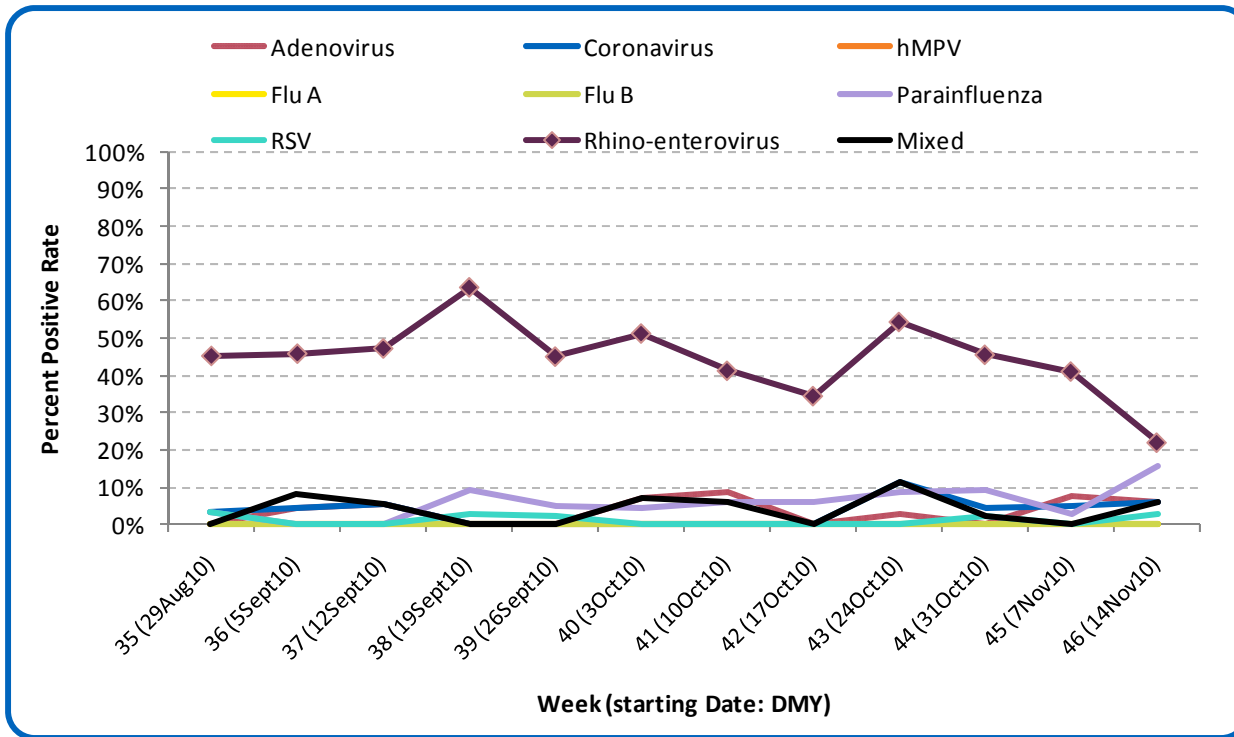
SURVEILLANCE AND HEALTH STATUS ASSESSMENT

Public Health Surveillance
Report Date: November 23, 2010

An influenza report targeted to the general public is available at: <http://www.health.alberta.ca/health-info/influenza-evidence.html>

[Back to first page](#)

Figure 6B: Respiratory Specimen Percent Positive Rates, by virus type, by week, North Zone (2010)

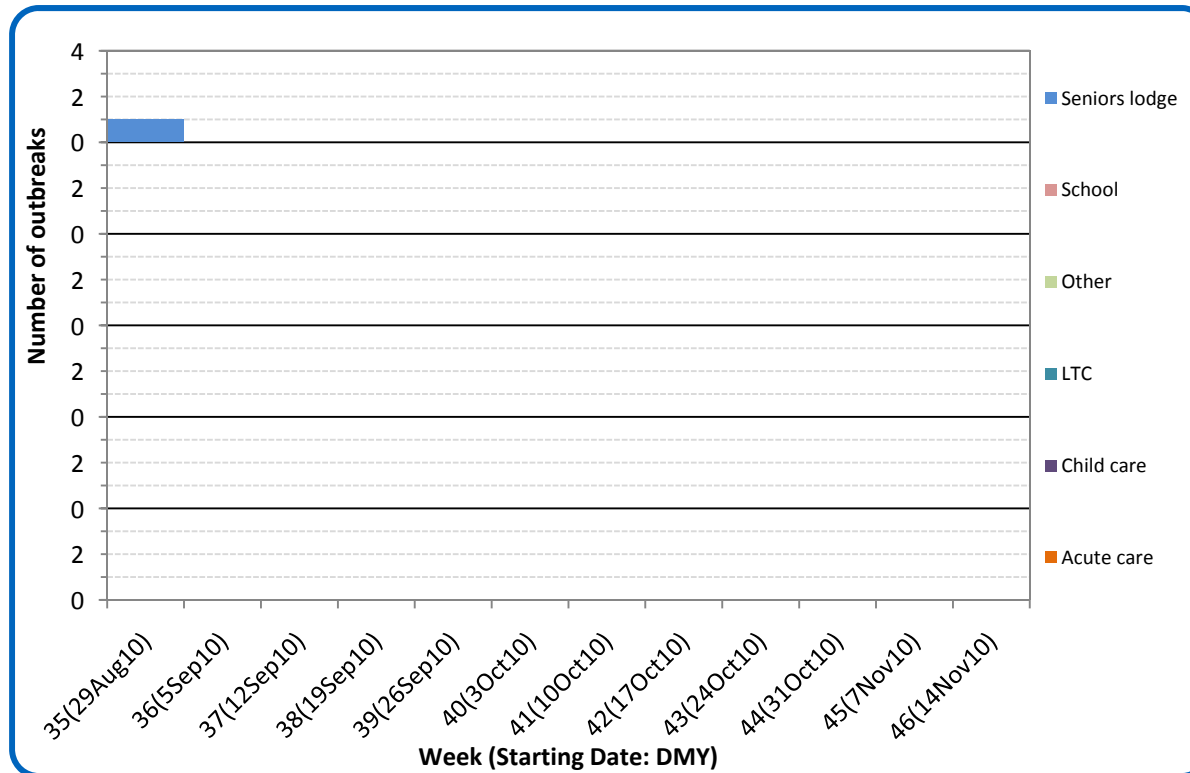


Source: DIAL – Provincial Laboratory (includes cases with positive respiratory specimens received on or before Nov 20, 2010)
For more information on data definitions and sources see [Annex: Data Notes section at the end of this report](#)

[Back to first page](#)

Since September 5, there have been no respiratory outbreaks reported from the North Zone.

Figure 6C: Reported respiratory outbreaks, by facility type, by week, North Zone (2010)



Source: Alberta Outbreak Reporting Form as of 23:59 on November 20, 2010
For more information on data definitions and sources see [Annex: Data Notes section at the end of this report](#)

SURVEILLANCE AND HEALTH STATUS ASSESSMENT

Public Health Surveillance
Report Date: November 23, 2010

An influenza report targeted to the general public is available at: <http://www.health.alberta.ca/health-info/influenza-evidence.html>

[Back to first page](#)

Attack rates in respiratory outbreaks

There have been no reports of respiratory outbreaks from the North Zone since the beginning of September.

Influenza-like illness visits and “Left Without Being seen”

There are no data available for the North Zone.

Respiratory related calls to Health Link

The number of calls to Health Link Alberta by residents of the North Zone for cough and breathing difficulties in Week 46 (Nov 14 - 20) was 14% lower than in the previous week and was comparable to the mid-September level.

Percentage of visits to sentinel offices with Influenza-like illness

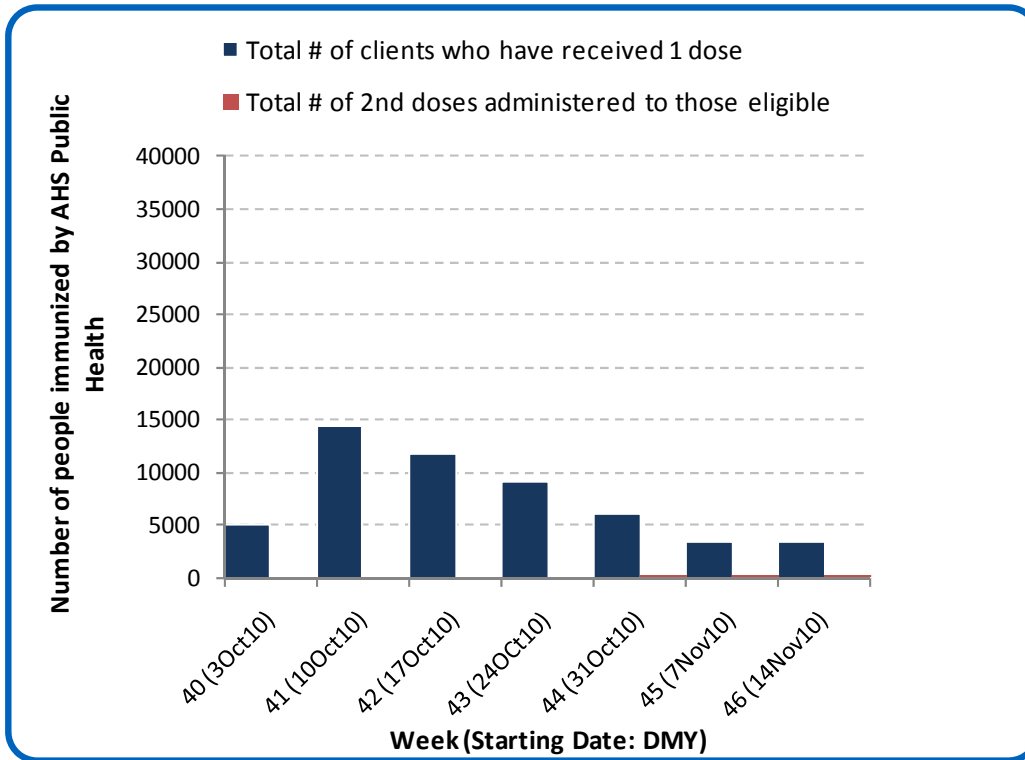
The percentage of ILI-related visits to sentinel physician offices by residents of the North Zone in Week 45 (Nov 7-13) was similar to that in Week 44.

Percentage of visits to sentinel offices with lower respiratory tract infection

The percentage of LRTI-related visits to sentinel physician offices by residents of the North Zone was significantly higher in Week 45 (Nov 7-13) than in the previous week. The combined percentage of ILI- and LRTI-related visits was 17% higher.

[Back to first page](#)

Figure 6D: Number Immunized by AHS (Public Health), by week, North Zone (2010)



Source: AHS Zones (doses do not include those delivered by external providers)
 Note: Immunization coverage rates will be reported at the end of the influenza season
 For more information on data definitions and sources see [Annex: Data Notes section at the end of this report](#)

[Back to first page](#)

Table 6A: AHS (Public Health) Delivered Influenza Immunizations (with Cumulative totals), by priority group, North Zone (2010)

Priority Group		Number Immunized (Week 46 – Nov 14-20, 2010)	Cumulative Number Immunized (since Oct 3, 2010)
Long term care staff		21	707
Health care workers		106	4,083
Pregnant women		46	423
Residents of long term care		13	1,232
65 years of age and over		645	14,633
All children 6 months up to and including 23 months*	Dose #1	168	1,442
	Dose #2	95	116
All children 24 months up to and including 59 months*	Dose #1	183	2,024
	Dose #2	16	17
High risk: 5 years up to and including 8 years*	Dose #1	48	785
	Dose #2	0	4
High risk: 9 years up to and including 64 years		495	6,639
Healthy: 5 years up to and including 8 years*	Dose #1	142	1,981
	Dose #2	2	11
Healthy: 9 years up to and including 64 years		1,661	19,401
Total number of clients who have received 1 dose		3,528	53,350
Total number of 2nd doses administered to those eligible*		113	148

Source: AHS Zones (doses do not include those delivered by external providers)

*Children under 9 years of age who have not received at least one dose of seasonal influenza vaccine in past years require two doses, given at least four weeks apart.

Note: Immunization coverage rates will be reported at the end of the influenza season

For more information on data definitions and sources see [Annex: Data Notes section at the end of this report](#)

SURVEILLANCE AND HEALTH STATUS ASSESSMENT

Public Health Surveillance

Report Date: November 23, 2010

An influenza report targeted to the general public is available at: <http://www.health.alberta.ca/health-info/influenza-evidence.html>

ANNEX: DATA NOTES

[Back to first page](#)

LABORATORY

Information on laboratory confirmed respiratory virus activity in Alberta is based on data from 2 sources:

- 1) The Alberta Provincial Public Health Laboratory DIAL system (Data Integration for Alberta Laboratories). The data in this system is specimen-based, therefore case-based information is determined by rationalizing samples from the same patient with the same virus identified within a 30 day period. The information (i.e. received date) from the first sample identifying the identical virus is used in this report. Note that Influenza cases are not rationalized this way as cases are verified (and broken down by type) using the case-based Alberta Influenza Case Management System. The data in this report are based on specimens obtained from residents of Alberta; according to the date the specimen was received by the laboratory.
- 2) The Alberta Influenza Case Management System, a database within the Influenza Outbreak Response Toolkit, an outbreak event management tool. The data in this system is case-based; according to the date the specimen was classified.

Both data sources are web-based applications supported by the Canadian Network for Public Health Intelligence.

Definition for “mixed” – a single sample where multiple viral organisms were isolated.

INFLUENZA-LIKE ILLNESS

Four data sources are used to provide information on utilization of primary and acute care services by people with Influenza-Like Illness (ILI). *Caution: Each source uses potentially different definitions of ILI.*

1. Primary care summaries are obtained from the TARRANT system. Patients seen by TARRANT physicians may not be representative of the general population. Reported ILI cases represent people seen by TARRANT physicians, according to the date seen by the physician. The percentage of ILI represents the proportion of patients with ILI of all patients seen by the physician.
2. Information on visits for ILI in Emergency Departments (ED) and urgent care centers are provided by the Alberta Real Time Syndromic Surveillance Net (ARTSSN) data repository. ILI designation is based on patients being screened in emergency departments with an ILI screening tool. The primary purpose of the ILI screening tool is to implement appropriate infection control measures. The original data sources fed to the ARTSSN data repository are EDIS (Emergency Department Information System) for the Edmonton Zone and REDIS for the Calgary Zone.
3. Health Link Alberta is a 24 hour a day, 7 day a week nurse telephone advice and health information service that provides the public with advice and information about health symptoms and concerns. The original data source for the daily calls to Health Link Alberta for ILI, cough, and breathing difficulties is the Health Link database called Sharp Focus.

SURVEILLANCE AND HEALTH STATUS ASSESSMENT

Public Health Surveillance

Report Date: November 23, 2010

An influenza report targeted to the general public is available at: <http://www.health.alberta.ca/health-info/influenza-evidence.html>

OUTBREAKS

[Back to first page](#)

Upon notification of an outbreak, the *Alberta Health & Wellness/Alberta Health Services* Outbreak Reporting Form (Fillable PDF) is completed by Zone Public Health investigators and sent to *Alberta Health & Wellness and AHS Public Health Surveillance*. The form includes information about the type and location of the outbreak, type of facility, and the causative organism (confirmed or suspected). There may be a delay between the reporting of an outbreak and the identification of the organism. In this report, the outbreaks are those that are caused by influenza-like illness viruses; those that are caused by bacteria (i.e. pertussis, invasive pneumococcal disease) and other types of viruses (i.e. measles, rubella (German measles), chickenpox) are excluded. Also excluded are those outbreaks that have no causative agent identified by the Provincial Laboratory for Public Health or where specimens are not tested or an outbreak with only one infected (confirmed or probable) case during a 7 day period. This follows the same approach of PHAC FluWatch for defining ILI/influenza outbreak. The naming convention of outbreak facilities by FluWatch - "Hospital and residential institutions" - is also adopted.

INFLUENZA IMMUNIZATIONS

Influenza immunization data are reported by AHS zones. Numbers are available to the Public Health Surveillance team at the beginning of the week for the doses administered the previous week (Sunday to Saturday). It includes those doses administered by AHS (Public Health) only. Clients can only exist in one priority group. Immunization coverage rates will be reported at the end of March, 2011.

POPULATION NUMBERS

Population data values used to calculate rates are for June 30, 2009 and are estimated using actual population values from the Alberta Health Care Insurance Plan (AHCIP) Registration File as of March 31, 2009. The following registrants are included: residents of Alberta; 'residents' of Alberta temporarily living elsewhere, such as extended visits or vacations or students attending an educational institute outside of Alberta, or Albertans temporarily (up to four years) working outside Alberta; persons during the first three months after they move from Alberta to another Canadian province; dependants of members of the RCMP and Armed Forces; persons from another country who are working or studying in Alberta on valid visas; and Natives/Aboriginals whose premiums are paid by Health Canada, First Nations and Inuit Health Branch. Not included are: members of the Armed Forces and RCMP; inmates at federal penitentiaries; persons from other provinces during their first three months in Alberta; and persons who have not registered for eligibility, or have opted out.

Slight differences between values provided at this level of aggregation and data provided at other levels of aggregation may occur because of round-off error. Population values are subject to change without notice when new source data is received.

SURVEILLANCE AND HEALTH STATUS ASSESSMENT

Public Health Surveillance

Report Date: November 23, 2010

An influenza report targeted to the general public is available at: <http://www.health.alberta.ca/health-info/influenza-evidence.html>