

## Weekly Report

December 7, 2010

The purpose of this report is to inform Public Health staff, primary care providers, acute care staff and other community practitioners about recent respiratory virus activity in the province of Alberta. Unless otherwise noted, all data presented are current as of the Saturday prior to the day the report is released.

### What's New?

#### Quick Links

[Alberta Snapshot](#)

[Section 1: Alberta](#)

[Section 2: Zone 1 - South](#)

[Section 3: Zone 2 - Calgary](#)

[Section 4: Zone 3 - Central](#)

[Section 5: Zone 4 – Edmonton](#)

[Section 6: Zone 5 – North](#)

[Annex: Data Notes](#)

#### Current Global Information

[FluWatch \(PHAC\)](#)

[FluView \(US CDC\)](#)

[HPA \(UK\)](#)

[WHO](#)

[Travel Advisories](#)

- According to the latest WHO update, global influenza activity remains low except in limited areas of tropical Asia and temperate South America. Seasonal influenza A (H3N2), influenza B and H1N1 (2009) are co-circulating at varying levels in different parts of the world.
- In Europe, influenza activity remains low but is increasing. Of the influenza infections confirmed in Europe, a little over 1/3 were type B and the rest were type A. Of the sub-typed influenza A viruses, 75% were A (H1N1) 2009. RSV infections are also steadily increasing.
- While respiratory virus activity remains low throughout the US, there have been recent increases in ILI activity and number of reported influenza B infections in Southeastern sections (e.g. State of Georgia). Influenza activity in Canada remains low; however recent increases in the number of positive influenza A/H3N2 and influenza B specimens have been reported in some areas of the Prairies, Ontario and Quebec. Of interest, the number of influenza A cases has recently increased significantly in Manitoba (31 new cases in one week; 25 of these cases are from a northern region reporting an outbreak of influenza A), with a little less than 1/3 of cases sub-typed as H3N2 and the rest with unresolved sub-typing. Approximately 35% of the influenza A cases in Manitoba have been reported in adults 30 - 49 years of age. That province has also reported one influenza related death, and four related hospitalized cases this season.
- All influenza isolates tested for antiviral resistance in Canada this season were resistant to Amantadine, and sensitive to Oseltamivir and Zanamivir.
- In Alberta, four new cases of influenza A were confirmed last week, all in Calgary Zone. Three of the cases (one infant and two adults over 65 years of age) were sub-typed as H3. The other case, a child under the age of five, had unresolved typing. These new cases bring the total number of laboratory confirmed influenza cases in the province to 19 (seven in South Zone, eleven in Calgary Zone and one in Central Zone); 18 cases of Influenza A and one case of Influenza B.
- Although there were no laboratory confirmed respiratory outbreaks reported in Alberta last week, one school outbreak was reported in Central Zone, with respiratory symptom onset dates starting the week of November 21<sup>st</sup>.
- Rhino-enterovirus activity continues to decline. The number of "mixed" infections reported across the province has returned to levels seen in previous weeks; however RSV activity continues to increase.

If you have questions about the Alberta Respiratory Virus Surveillance Update, or any of the indicators, please contact: [AHSPublicHealthSurveillance@albertahealthservices.ca](mailto:AHSPublicHealthSurveillance@albertahealthservices.ca) Or phone: 780-342-0210

## Alberta Snapshot

[Back to first page](#)

Indicators		Cumulative Counts					Alberta	
		Week 35 (starting Aug 29/10) to week 48 (starting Nov 28/10)						
		South	Calgary	Central	Edmonton	North		
<b>Laboratory Confirmed Cases</b>	Number of cases with a positive respiratory specimen <sup>1</sup>	Adenovirus	2	16	5	19	6	<b>48</b>
		Coronavirus	0	10	2	22	10	<b>44</b>
		Human metapneumovirus (hMPV)	4	1	0	1	0	<b>6</b>
		Influenza A	8	10	0	0	0	<b>18</b>
		Influenza B	0	0	1	0	0	<b>1</b>
		Parainfluenza	6	16	15	55	29	<b>121</b>
		Respiratory syncytial virus (RSV)	4	33	0	26	8	<b>71</b>
		Rhino enterovirus	59	286	113	408	183	<b>1049</b>
		Mixed	2	31	7	26	22	<b>88</b>
		Total	85	403	143	557	258	<b>1446</b>
<b>Outbreaks</b>	# laboratory confirmed respiratory outbreaks <sup>2</sup>	0	5	1	6	1	<b>13</b>	
<b>Influenza Immunizations</b>	Total number of clients who have received 1 dose administered by AHS Public Health <sup>3</sup> (cumulative since Oct 3, 2010)	40,991	164,339	55,723	149,738	56,676	<b>467,467</b>	

-- Information not available

<sup>1</sup> Sources: DIAL – Provincial Laboratory and the Outbreak Response Toolkit (includes cases with positive respiratory specimens received on or before Dec 4, 2010).

<sup>2</sup> Source: Alberta Health and Wellness Outbreak Reporting Form (Fillable PDF) from All Zones

<sup>3</sup>Source: AHS Zones (number does not include doses provided by external providers); includes first doses only for those that require two doses

For more information on data definitions and sources see [Annex: Data Notes section at the end of this report](#)

## SURVEILLANCE AND HEALTH STATUS ASSESSMENT

### Public Health Surveillance

Report Date: December 7, 2010

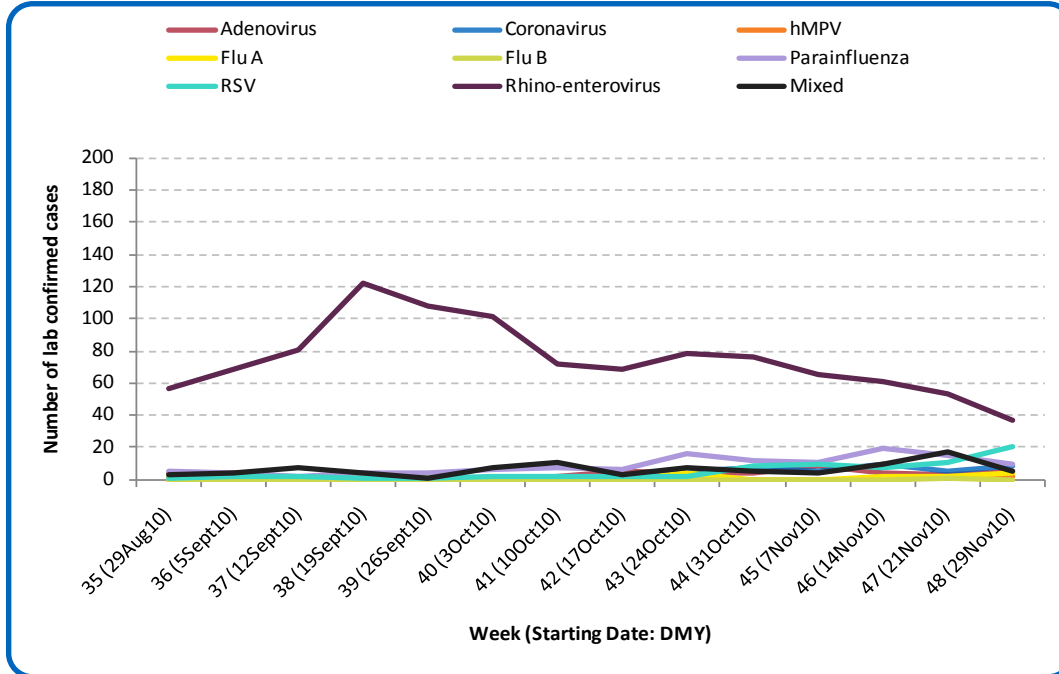
An influenza report targeted to the general public is available at: <http://www.health.alberta.ca/health-info/influenza-evidence.html>

## SECTION 1: ALBERTA

[Back to first page](#)

The predominant respiratory virus circulating in Alberta is still rhino-enterovirus. Last week, there was an increase in the number of RSV cases compared to previous weeks. The majority of these cases are in infants. Four new cases of influenza were confirmed in the province last week; all in the Calgary Zone. In total, there have been 19 confirmed cases of influenza in Alberta since late August (16 type A H3 sub-type, 2 type A with unresolved sub-typing, and 1 type B). Five cases have been confirmed in children under the age of 9 years of age (including one infant), 11 cases (including the influenza B case) have been confirmed in adults aged 18 to less than 65 years, and three cases have been confirmed in adults aged 65 years and over.

Figure 1A: Laboratory confirmed respiratory virus cases, by virus type, by week, Alberta (2010)



Sources: DIAL – Provincial Laboratory and the Outbreak Response Toolkit (includes cases with positive respiratory specimens received on or before Dec 4, 2010). For more information on data definitions and sources see [Annex: Data Notes section at the end of this report](#)

### SURVEILLANCE AND HEALTH STATUS ASSESSMENT

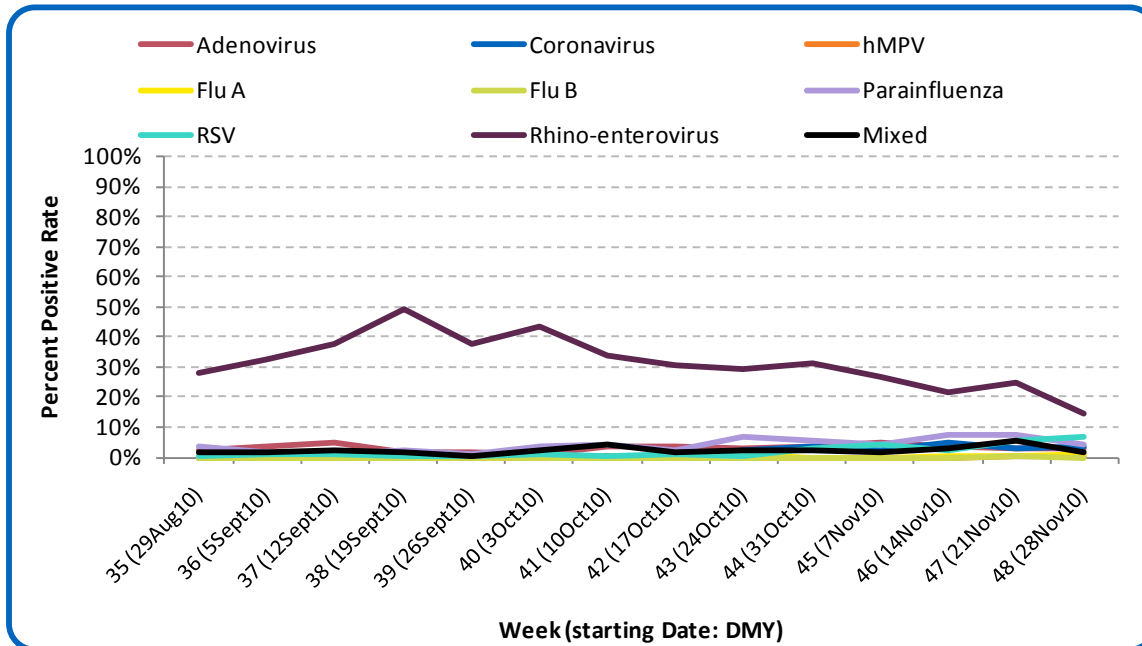
#### Public Health Surveillance

Report Date: December 7, 2010

An influenza report targeted to the general public is available at: <http://www.health.alberta.ca/health-info/influenza-evidence.html>

Figure 1B: Respiratory Specimen Percent Positive Rates, by virus type, by week, Alberta (2010)

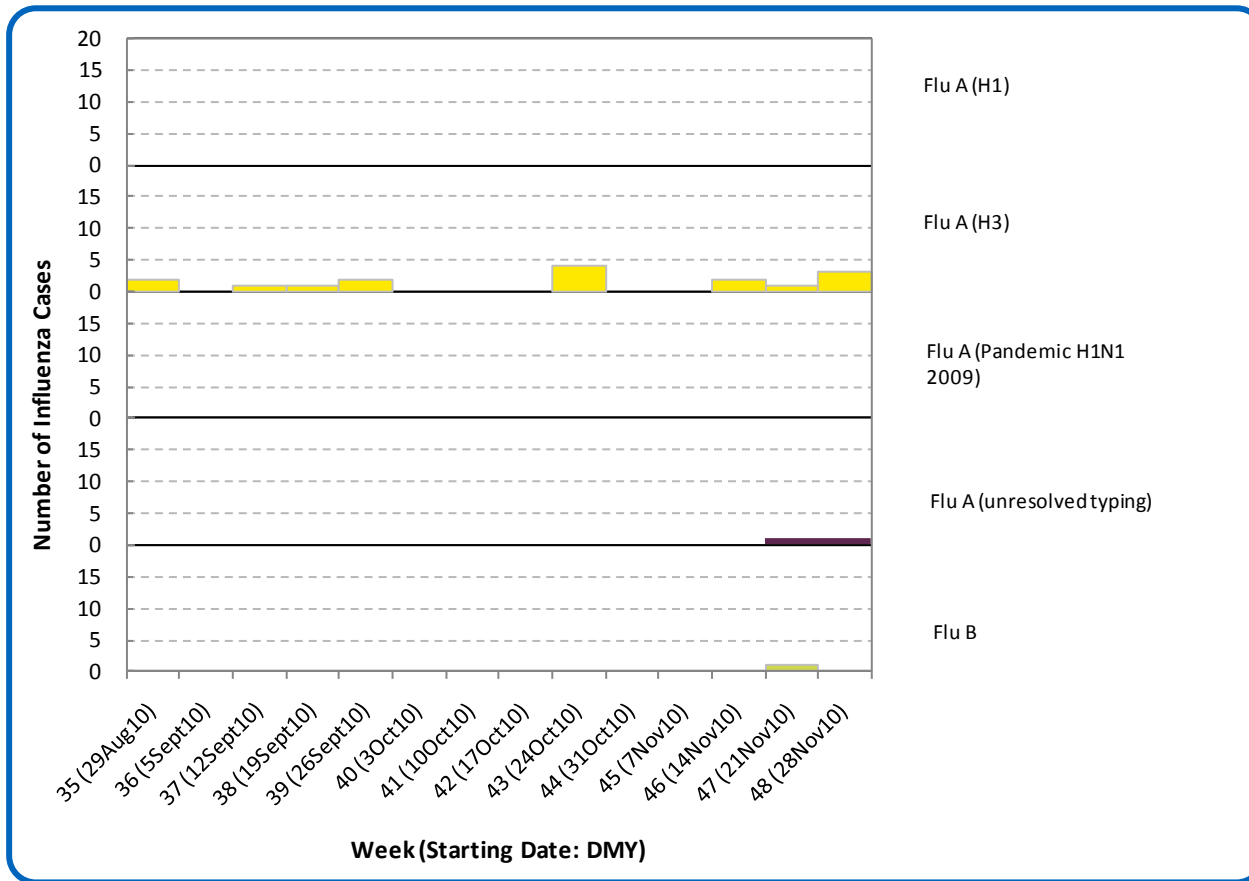
[Back to first page](#)



Source: DIAL – Provincial Laboratory (includes cases with positive respiratory specimens received on or before Dec 4, 2010)  
 For more information on data definitions and sources see [Annex: Data Notes section at the end of this report](#)

Figure 1C: Laboratory confirmed Influenza cases, by subtype, by week specimen received, Alberta (2010)

[Back to first page](#)



Source: Outbreak Response Toolkit (includes cases with positive respiratory specimens received on or before Dec 4, 2010). For more information on data definitions and sources see [Annex: Data Notes section at the end of this report](#)

**SURVEILLANCE AND HEALTH STATUS ASSESSMENT**

**Public Health Surveillance**  
Report Date: December 7, 2010

An influenza report targeted to the general public is available at: <http://www.health.alberta.ca/health-info/influenza-evidence.html>

[Back to first page](#)

**Table 1A: New Influenza cases (and age specific rates), by subtype, by age group, Alberta (Week 48: Nov 28-Dec 4, 2010)**

	Flu A (Seasonal-H1)		Flu A (Seasonal-H3)		Flu A (Pandemic H1N1 2009)		Flu A (unresolved typing)		Flu B		Total	
	#	Rate (per 10,000)	#	Rate (per 10,000)	#	Rate (per 10,000)	#	Rate (per 10,000)	#	Rate (per 10,000)	#	Rate (per 10,000)
0 to <2 years	0	0.0	1	0.1	0	0.0	0	0.0	0	0.0	1	0.1
2 to <5 years	0	0.0	0	0.0	0	0.0	1	0.1	0	0.0	1	0.1
5 to <9 years	0	0.0	0	0.0	0	0.0	0	0.0	0	0.0	0	0.0
9 to <18 years	0	0.0	0	0.0	0	0.0	0	0.0	0	0.0	0	0.0
18 to <65 years	0	0.0	2	<0.1	0	0.0	0	0.0	0	0.0	2	<0.1
65 to <75 years	0	0.0	0	0.0	0	0.0	0	0.0	0	0.0	0	0.0
75+ years	0	0.0	0	0.0	0	0.0	0	0.0	0	0.0	0	0.0
<b>Total</b>	<b>0</b>	<b>0.0</b>	<b>3</b>	<b>&lt;0.1</b>	<b>0</b>	<b>0.0</b>	<b>1</b>	<b>0.0</b>	<b>0</b>	<b>0.0</b>	<b>4</b>	<b>&lt;0.1</b>

**Table 1B: Cumulative Influenza cases (and age specific rates), by subtype, by age group, Alberta (Aug 29 – Dec 4, 2010)**

	Flu A (Seasonal-H1)		Flu A (Seasonal-H3)		Flu A (Pandemic H1N1 2009)		Flu A (unresolved typing)		Flu B		Total	
	#	Rate (per 10,000)	#	Rate (per 10,000)	#	Rate (per 10,000)	#	Rate (per 10,000)	#	Rate (per 10,000)	#	Rate (per 10,000)
0 to <2 years	0	0.0	1	0.1	0	0.0	0	0.0	0	0.0	1	0.1
2 to <5 years	0	0.0	2	0.1	0	0.0	1	0.1	0	0.0	3	0.2
5 to <9 years	0	0.0	1	0.1	0	0.0	0	0.0	0	0.0	1	0.1
9 to <18 years	0	0.0	0	0.0	0	0.0	0	0.0	0	0.0	0	0.0
18 to <65 years	0	0.0	9	<0.1	0	0.0	1	<0.1	1	<0.1	11	<0.1
65 to <75 years	0	0.0	1	<0.1	0	0.0	0	0.0	0	0.0	1	<0.1
75+ years	0	0.0	2	0.1	0	0.0	0	0.0	0	0.0	2	0.1
<b>Total</b>	<b>0</b>	<b>0.0</b>	<b>16</b>	<b>&lt;0.1</b>	<b>0</b>	<b>0.0</b>	<b>2</b>	<b>&lt;0.1</b>	<b>1</b>	<b>&lt;0.1</b>	<b>19</b>	<b>0.1</b>

Source for Table 1A & 1B: Outbreak Response Toolkit (includes cases with positive respiratory specimens received on or before Dec 4, 2010).

Population data values used to calculate rates are for June 30, 2009 and are estimated using actual population values from the Alberta Health Care Insurance Plan (AHCIP) Registration File as of March 31, 2009.

For more information on data definitions and sources see [Annex: Data Notes section at the end of this report](#)

## SURVEILLANCE AND HEALTH STATUS ASSESSMENT

### Public Health Surveillance

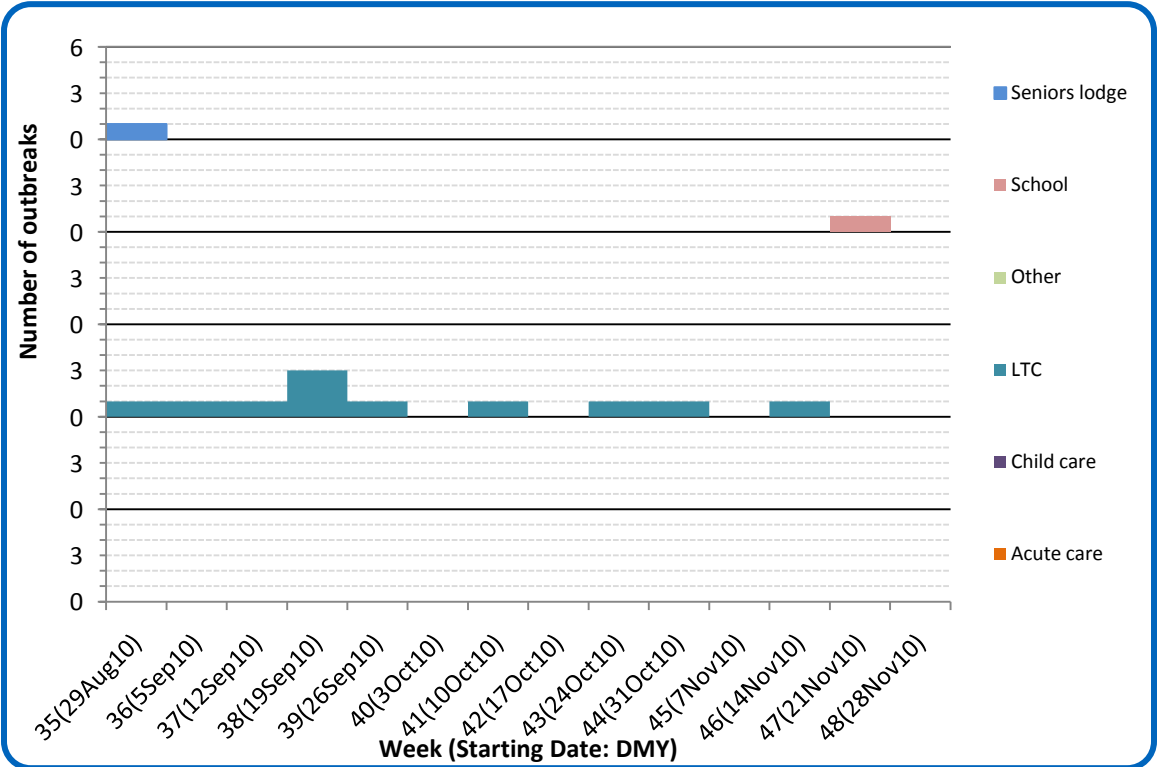
Report Date: December 7, 2010

An influenza report targeted to the general public is available at: <http://www.health.alberta.ca/health-info/influenza-evidence.html>

[Back to first page](#)

The respiratory outbreak in the Calgary Zone mentioned in last week’s report was not confirmed as all four specimens submitted for laboratory testing were negative for all respiratory viruses. One respiratory outbreak in a school was reported in the Central Zone during the week of Nov 21<sup>st</sup>. Laboratory tests are pending.

**Figure 1D: Respiratory outbreaks, by facility type, by onset week, Alberta (2010; school outbreaks may not have a laboratory confirmation)**



Source: Alberta Outbreak Reporting Form as of 23:59 on December 4, 2010  
 For more information on data definitions and sources see [Annex: Data Notes section at the end of this report](#)

**SURVEILLANCE AND HEALTH STATUS ASSESSMENT**

**Public Health Surveillance**  
 Report Date: December 7, 2010

An influenza report targeted to the general public is available at: <http://www.health.alberta.ca/health-info/influenza-evidence.html>

[Back to first page](#)

### Attack rates in respiratory outbreaks

The school outbreak in the Central Zone in Week 47 has a preliminary attack rate of 13%.

### Influenza-like illness visits and “Left Without Being Seen”

The combined number of visits to emergency departments/urgent care centers for influenza-like illness (ILI) from the City of Calgary and the Edmonton Zone was 8% higher in Week 48 (Nov 28-Dec 4) than in Week 47, maintaining an upward trend. A similar trend is present for hospital admissions. The number of patients experiencing ILI who left EDs without being seen increased by 23% in Week 48 compared to the previous week. For people with cough symptoms during that same time period, visits to ED’s were 15% higher. Again, the trend for hospital admissions for patients with cough symptoms was similar. The number of patients with cough who left EDs without being seen was 12% lower last week compared to the previous week.

### Respiratory related calls to Health Link Alberta

The number of calls to Health Link Alberta for cough or breathing difficulties in Week 48 (Nov 28 – Dec 4) was comparable to that in Week 47, maintaining an upward trend since late August.

### Percentage of visits to sentinel offices with influenza-like illness (ILI)

In Week 47 (Nov 21-27), the province-wide percentage of ILI-related visits to sentinel physician offices was 23% lower than in Week 46.

### Percentage of visits to sentinel offices with lower respiratory tract infection (LRTI)

The province-wide percentage of LRTI-related visits to sentinel physician offices in Week 47 (Nov 21-27) was 74% higher than in Week 46, the highest it has been since late August.

The combined percentage of ILI- and LRTI-related visits was 31% higher in Week 47 than in Week 46 due to the increased LRTI-related visits. This indicator (combined percentage of ILI and LRTI-related visits) is the highest it has been this season.

## SURVEILLANCE AND HEALTH STATUS ASSESSMENT

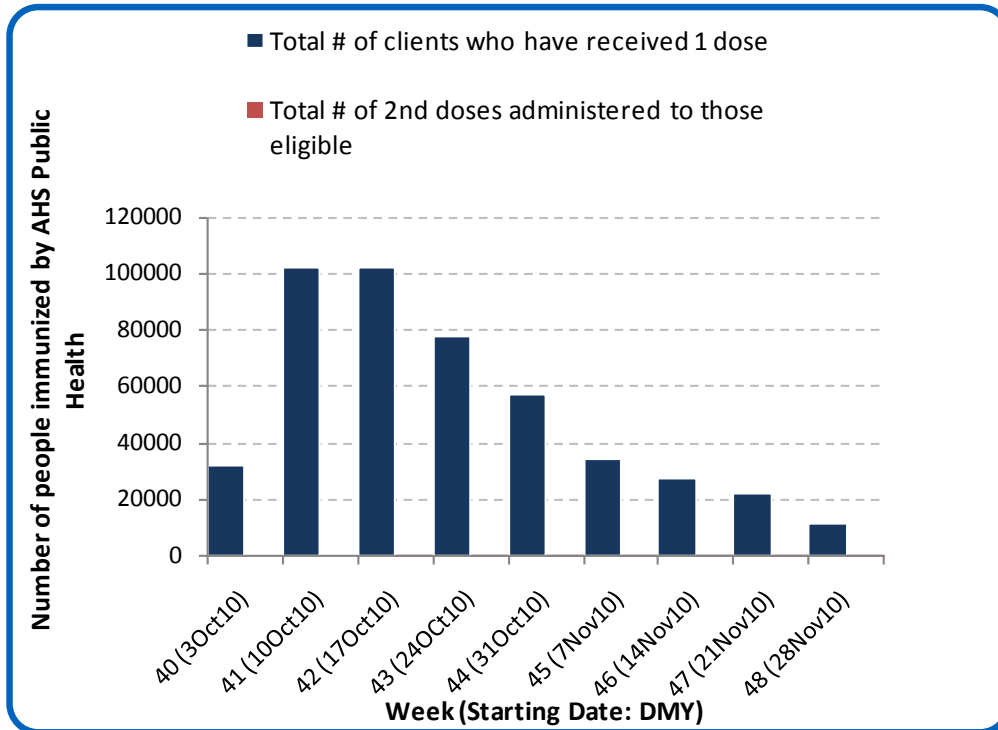
### Public Health Surveillance

Report Date: December 7, 2010

An influenza report targeted to the general public is available at: <http://www.health.alberta.ca/health-info/influenza-evidence.html>

[Back to first page](#)

Figure 1E: Number Immunized by AHS (Public Health), by week, Alberta (2010)



Source: AHS Zones (doses do not include those delivered by external providers);  
 Note: Immunization coverage rates will be reported at the end of the influenza season  
 For more information on data definitions and sources see [Annex: Data Notes section at the end of this report](#)

**SURVEILLANCE AND HEALTH STATUS ASSESSMENT**

**Public Health Surveillance**

Report Date: December 7, 2010

An influenza report targeted to the general public is available at: <http://www.health.alberta.ca/health-info/influenza-evidence.html>

[Back to first page](#)

**Table 1C: AHS (Public Health) Delivered Influenza Immunizations (with Cumulative totals), by priority group, Alberta (2010)**

Priority Group	Number Immunized (Week 48 – Nov 28-Dec 4, 2010)	Cumulative Number Immunized (since Oct 3, 2010)
Long term care staff	32	2,425
Health care workers	322	17,480
Pregnant women	180	3,821
Residents of long term care	12	4,678
65 years of age and over	1,646	141,395
All children 6 months up to and including 23 months*	Dose #1	1,223
	Dose #2	684
All children 24 months up to and including 59 months*	Dose #1	1,014
	Dose #2	112
High risk: 5 years up to and including 8 years*	Dose #1	191
	Dose #2	8
High risk: 9 years up to and including 64 years	1,336	51,484
Healthy: 5 years up to and including 8 years*	Dose #1	574
	Dose #2	64
Healthy: 9 years up to and including 64 years	5,116	187,849
<b>Total number of clients who have received 1 dose</b>	<b>11,646</b>	<b>467,467</b>
<b>Total number of 2nd doses administered to those eligible*</b>	<b>868</b>	<b>3,052</b>

Source: AHS Zones (doses do not include those delivered by external providers)

\*Children under 9 years of age who have not received at least one dose of seasonal influenza vaccine in past years require two doses, given at least four weeks apart.

Note: Immunization coverage rates will be reported at the end of the influenza season

For more information on data definitions and sources see [Annex: Data Notes section at the end of this report](#)

## SURVEILLANCE AND HEALTH STATUS ASSESSMENT

### Public Health Surveillance

Report Date: December 7, 2010

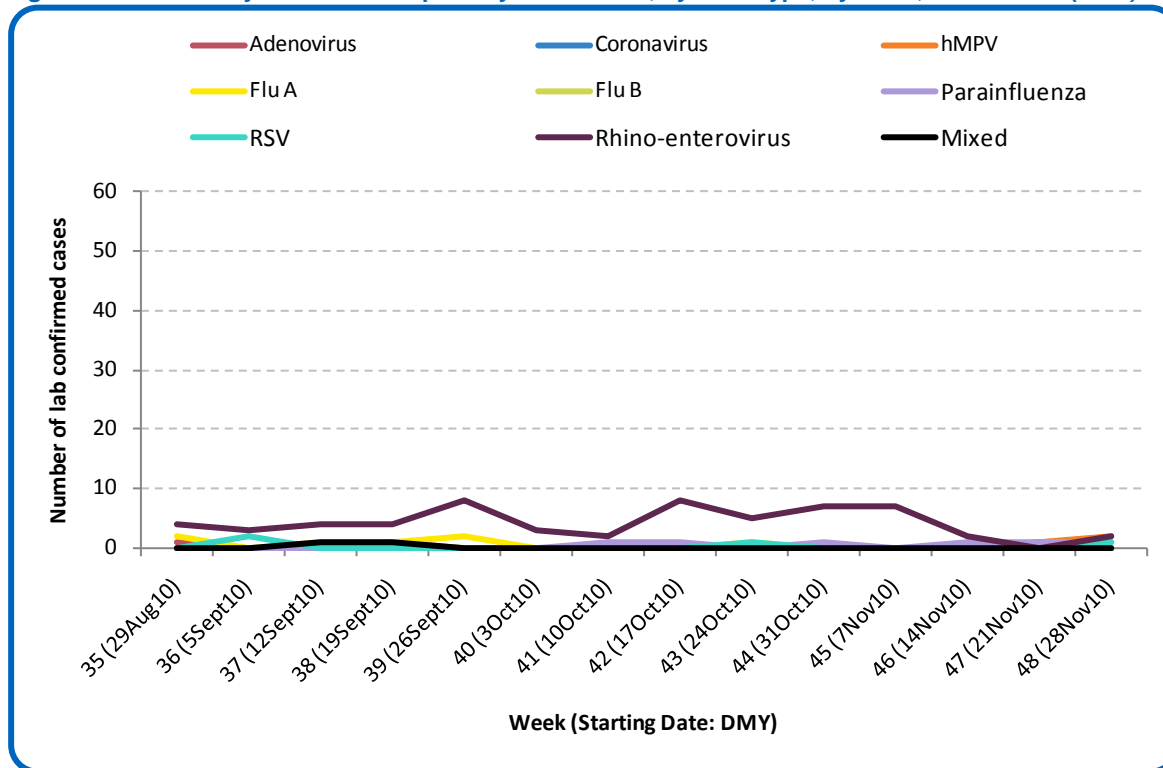
An influenza report targeted to the general public is available at: <http://www.health.alberta.ca/health-info/influenza-evidence.html>

SECTION 2: ZONE 1 - SOUTH

[Back to first page](#)

Generally, respiratory virus activity is low in the South Zone. No new influenza cases were confirmed in the South Zone last week. In total, there have been seven confirmed cases of influenza A (H3) in the South Zone since late August. Five cases have been in adults aged 18 to less than 65 years and two cases have been in children under the age of 5 years.

Figure 2A: Laboratory confirmed respiratory virus cases, by virus type, by week, South Zone (2010)



Sources: DIAL – Provincial Laboratory and the Outbreak Response Toolkit (includes cases with positive respiratory specimens received on or before Dec 4, 2010). For more information on data definitions and sources see [Annex: Data Notes section at the end of this report](#)

SURVEILLANCE AND HEALTH STATUS ASSESSMENT

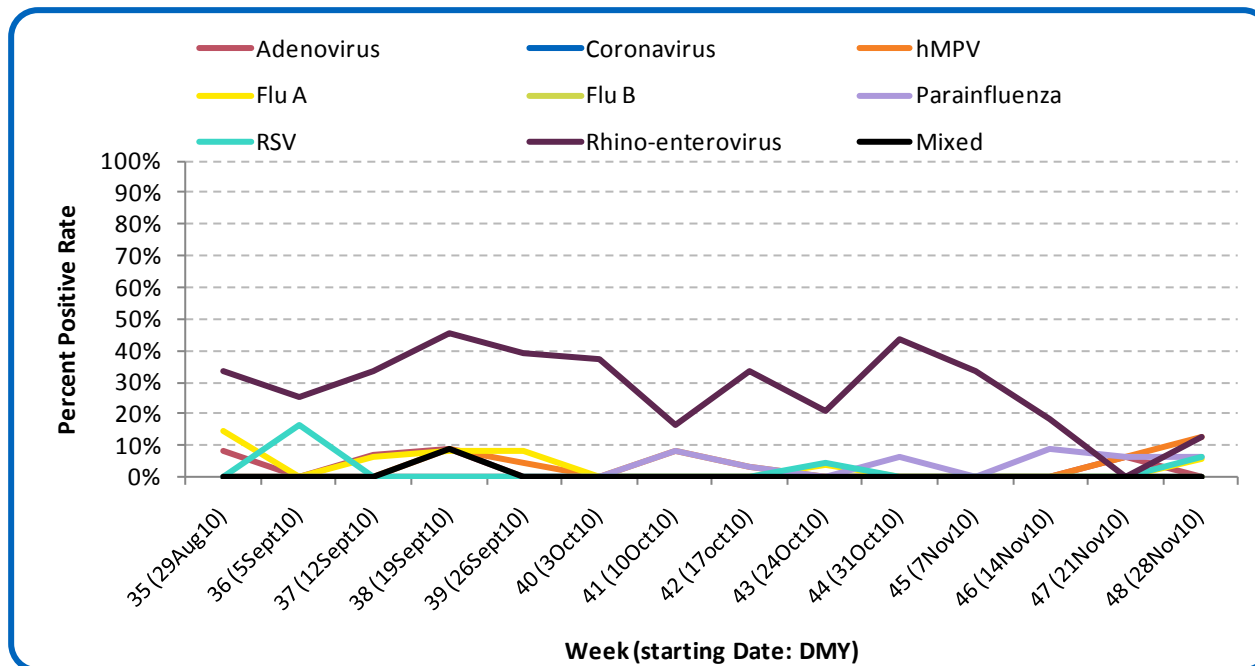
Public Health Surveillance

Report Date: December 7, 2010

An influenza report targeted to the general public is available at: <http://www.health.alberta.ca/health-info/influenza-evidence.html>

[Back to first page](#)

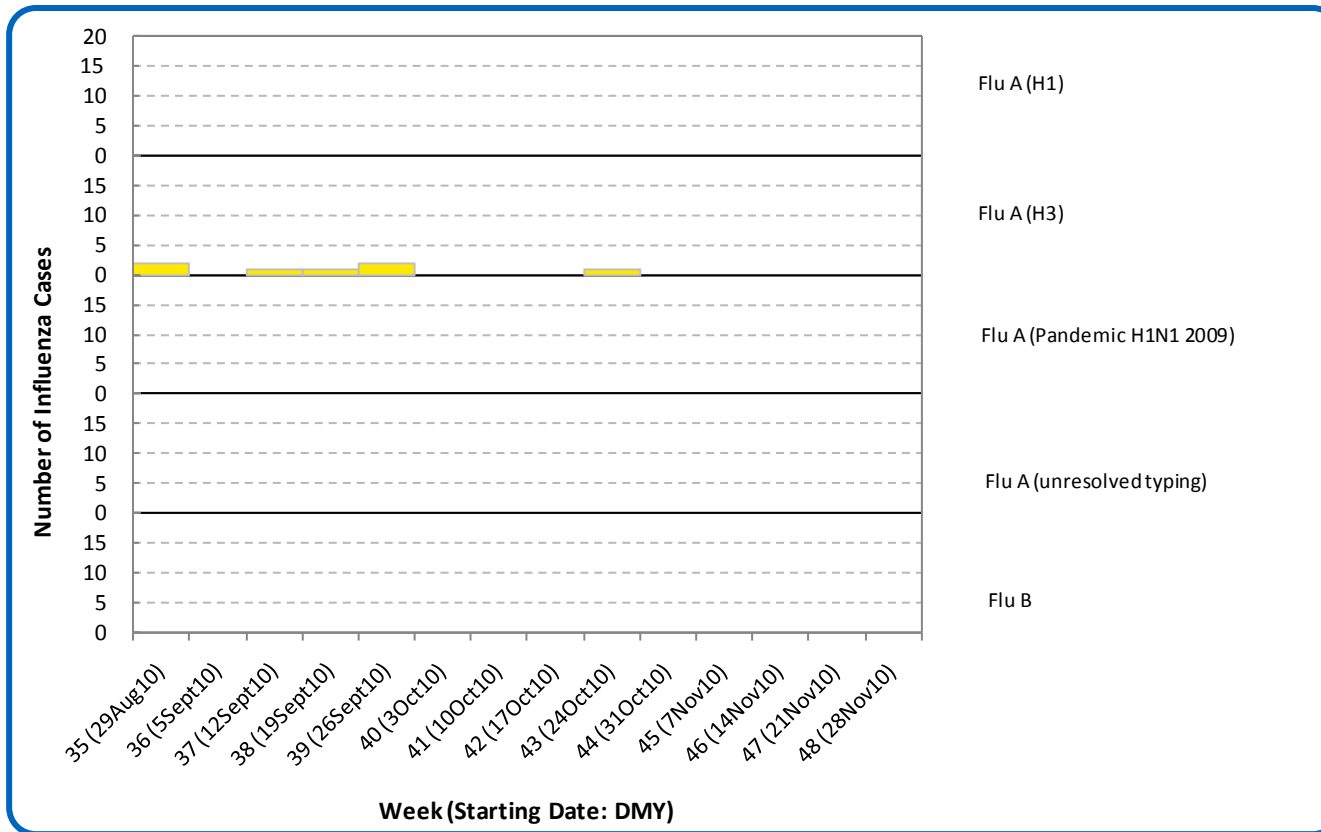
Figure 2B: Respiratory Specimen Percent Positive Rates, by virus type, by week, South Zone (2010)



Source: DIAL – Provincial Laboratory (includes cases with positive respiratory specimens received on or before Dec 4, 2010)  
For more information on data definitions and sources see [Annex: Data Notes section at the end of this report](#)

[Back to first page](#)

Figure 2C: Laboratory confirmed Influenza cases, by subtype, by week specimen received, South Zone (2010)



Source: Outbreak Response Toolkit (includes cases with positive respiratory specimens received on or before Dec 4, 2010).  
For more information on data definitions and sources see [Annex: Data Notes section at the end of this report](#)

**SURVEILLANCE AND HEALTH STATUS ASSESSMENT**

**Public Health Surveillance**

Report Date: December 7, 2010

An influenza report targeted to the general public is available at: <http://www.health.alberta.ca/health-info/influenza-evidence.html>

[Back to first page](#)

**Table 2A: Cumulative Influenza cases (and age specific rates), by subtype, by age group, South Zone (Aug 29–Dec 4, 2010)**

	Flu A (Seasonal-H1)		Flu A (Seasonal-H3)		Flu A (Pandemic H1N1 2009)		Flu A (unresolved typing)		Flu B		Total	
	#	Rate (per 10,000)	#	Rate (per 10,000)	#	Rate (per 10,000)	#	Rate (per 10,000)	#	Rate (per 10,000)	#	Rate (per 10,000)
0 to <2 years	0	0.0	0	0.0	0	0.0	0	0.0	0	0.0	0	0.0
2 to <5 years	0	0.0	2	1.7	0	0.0	0	0.0	0	0.0	2	1.7
5 to <9 years	0	0.0	0	0.0	0	0.0	0	0.0	0	0.0	0	0.0
9 to <18 years	0	0.0	0	0.0	0	0.0	0	0.0	0	0.0	0	0.0
18 to <65 years	0	0.0	5	0.3	0	0.0	0	0.0	0	0.0	5	0.3
65 to <75 years	0	0.0	0	0.0	0	0.0	0	0.0	0	0.0	0	0.0
75+ years	0	0.0	0	0.0	0	0.0	0	0.0	0	0.0	0	0.0
<b>Total</b>	<b>0</b>	<b>0.0</b>	<b>7</b>	<b>0.3</b>	<b>0</b>	<b>0.0</b>	<b>0</b>	<b>0.0</b>	<b>0</b>	<b>0.0</b>	<b>7</b>	<b>0.3</b>

Source for Table 2A & 2B: Outbreak Response Toolkit (includes cases with positive respiratory specimens received on or before Dec 4, 2010).

Population data values used to calculate rates are for June 30, 2009 and are estimated using actual population values from the Alberta Health Care Insurance Plan (AHCIP) Registration File as of March 31, 2009.

For more information on data definitions and sources see [Annex: Data Notes section at the end of this report](#)

[Back to first page](#)

### Attack rates in respiratory outbreaks

There have been no respiratory outbreaks reported in the South Zone this season.

### Influenza-like illness visits and “Left Without Being Seen”

This information is not available for the South Zone.

### Respiratory related calls to Health Link Alberta

The number of calls to Health Link Alberta for cough or breathing difficulties by residents of the South Zone has been stable since the end of October.

### Percentage of visits to sentinel offices with Influenza-like illness (ILI)

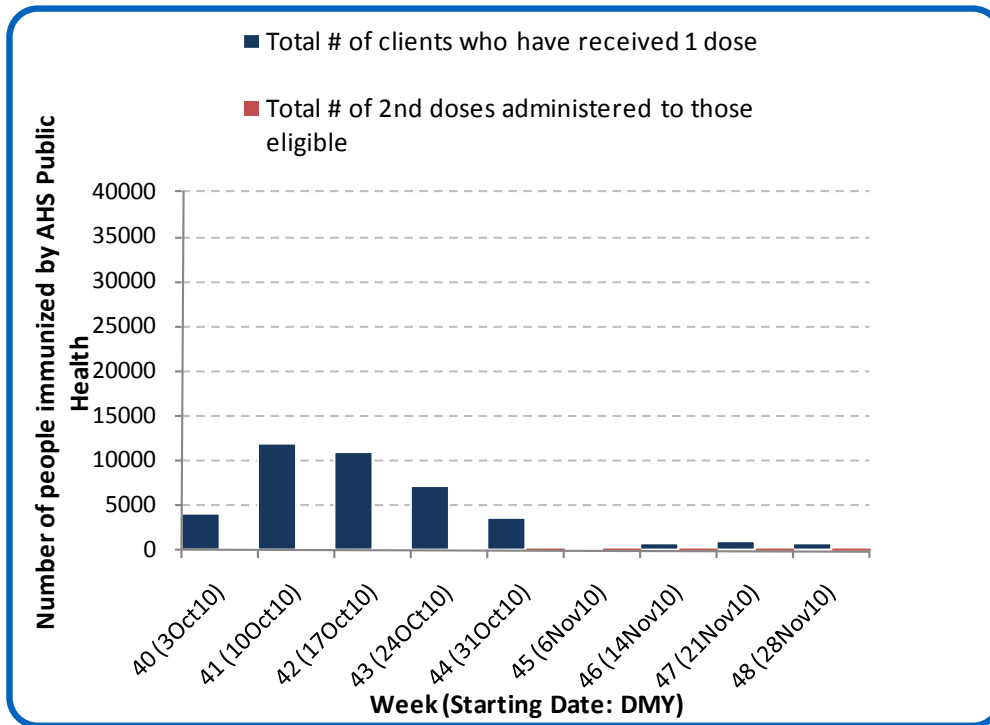
There were no reports of ILI-related visits to sentinel physician offices by residents of the South Zone in Week 47 (Nov 21-27).

### Percentage of visits to sentinel offices with lower respiratory tract infection (LRTI)

There were no reports of LRTI-related visits to sentinel physician offices by residents of the South Zone in week 47 (Nov 21-27).

[Back to first page](#)

Figure 2D: Number Immunized by AHS (Public Health), by week, South Zone (2010)



Source: AHS Zones (doses do not include those delivered by external providers)  
 Note: Immunization coverage rates will be reported at the end of the influenza season  
 For more information on data definitions and sources see [Annex: Data Notes section at the end of this report](#)

**SURVEILLANCE AND HEALTH STATUS ASSESSMENT**

**Public Health Surveillance**

Report Date: December 7, 2010

An influenza report targeted to the general public is available at: <http://www.health.alberta.ca/health-info/influenza-evidence.html>

Table 2B: AHS (Public Health) Delivered Influenza Immunizations (with Cumulative totals), by priority group, South Zone (2010)

[Back to first page](#)

Priority Group	Number Immunized (Week 48 – Nov 28-Dec 4, 2010)	Cumulative Number Immunized (since Oct 3, 2010)
Long term care staff	5	594
Health care workers	11	1,514
Pregnant women	8	265
Residents of long term care	0	719
65 years of age and over	158	15,386
All children 6 months up to and including 23 months*	Dose #1	1,081
	Dose #2	166
All children 24 months up to and including 59 months*	Dose #1	1,771
	Dose #2	46
High risk: 5 years up to and including 8 years*	Dose #1	452
	Dose #2	4
High risk: 9 years up to and including 64 years	61	3,966
Healthy: 5 years up to and including 8 years*	Dose #1	1,350
	Dose #2	23
Healthy: 9 years up to and including 64 years	362	13,893
<b>Total number of clients who have received 1 dose</b>	<b>821</b>	<b>40,991</b>
<b>Total number of 2nd doses administered to those eligible*</b>	<b>86</b>	<b>239</b>

Source: AHS Zones (doses do not include those delivered by external providers)

\*Children under 9 years of age who have not received at least one dose of seasonal influenza vaccine in past years require two doses, given at least four weeks apart.

Note: Immunization coverage rates will be reported at the end of the influenza season

For more information on data definitions and sources see [Annex: Data Notes section at the end of this report](#)

## SURVEILLANCE AND HEALTH STATUS ASSESSMENT

### Public Health Surveillance

Report Date: December 7, 2010

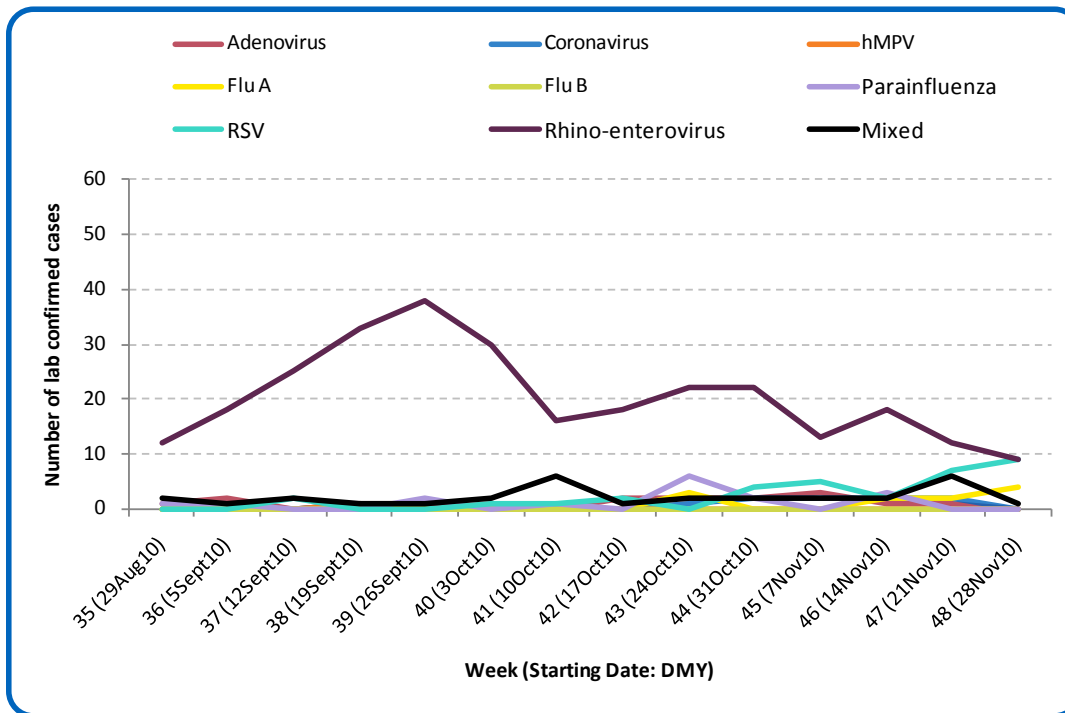
An influenza report targeted to the general public is available at: <http://www.health.alberta.ca/health-info/influenza-evidence.html>

**SECTION 3: ZONE 2 - CALGARY**

[Back to first page](#)

The number of RSV cases in the Calgary Zone has increased over the last two weeks from previous weeks. The majority of these cases are in infants. Four new cases of influenza A were confirmed in the Calgary Zone last week; one case in an infant and two cases in adults aged 18 to less than 65 years of age were both sub-typed as H3, and one case in a child under the age of five had unresolved typing due to low viral load in the specimen. Since late August, a total of 11 cases of influenza A have been confirmed in the Calgary Zone.

**Figure 3A: Laboratory confirmed respiratory virus cases, by virus type, by week, Calgary Zone (2010)**



Sources: DIAL – Provincial Laboratory and the Outbreak Response Toolkit (includes cases with positive respiratory specimens received on or before Dec 4, 2010). For more information on data definitions and sources see [Annex: Data Notes section at the end of this report](#)

**SURVEILLANCE AND HEALTH STATUS ASSESSMENT**

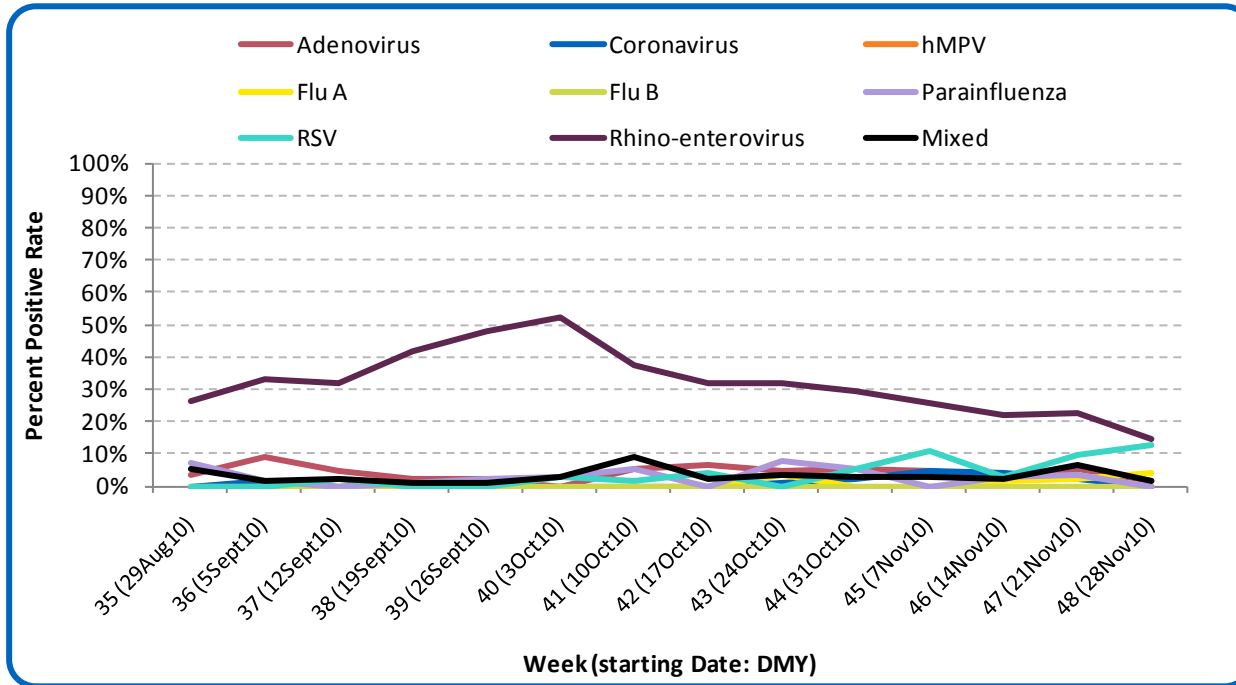
**Public Health Surveillance**

Report Date: December 7, 2010

An influenza report targeted to the general public is available at: <http://www.health.alberta.ca/health-info/influenza-evidence.html>

[Back to first page](#)

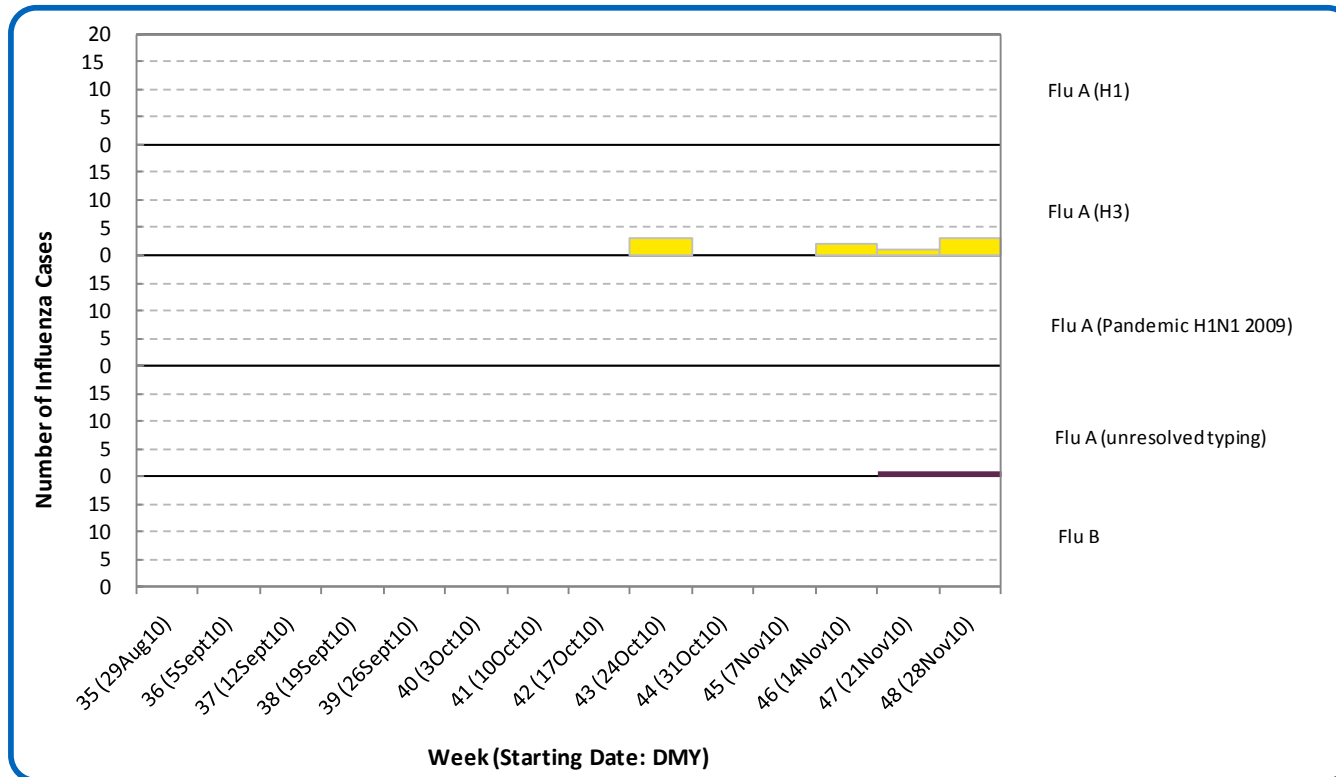
Figure 3B: Respiratory Specimen Percent Positive Rates, by virus type, by week, Calgary Zone (2010)



Source: DIAL – Provincial Laboratory (includes cases with positive respiratory specimens received on or before Dec 4, 2010)  
For more information on data definitions and sources see [Annex: Data Notes section at the end of this report](#)

[Back to first page](#)

Figure 3C: Laboratory confirmed Influenza cases, by subtype, by week specimen received, Calgary Zone (2010)



Source: Outbreak Response Toolkit (includes cases with positive respiratory specimens received on or before Dec 4, 2010).  
For more information on data definitions and sources see [Annex: Data Notes section at the end of this report](#)

[Back to first page](#)

**Table 3A: New Influenza cases (and age specific rates), by subtype, by age group, Calgary Zone (Week 48: Nov 28-Dec 4, 2010)**

	Flu A (Seasonal-H1)		Flu A (Seasonal-H3)		Flu A (Pandemic H1N1 2009)		Flu A (unresolved typing)		Flu B		Total	
	#	Rate (per 10,000)	#	Rate (per 10,000)	#	Rate (per 10,000)	#	Rate (per 10,000)	#	Rate (per 10,000)	#	Rate (per 10,000)
0 to <2 years	0	0.0	1	0.3	0	0.0	0	0.0	0	0.0	1	0.3
2 to <5 years	0	0.0	0	0.0	0	0.0	1	0.2	0	0.0	1	0.2
5 to <9 years	0	0.0	0	0.0	0	0.0	0	0.0	0	0.0	0	0.0
9 to <18 years	0	0.0	0	0.0	0	0.0	0	0.0	0	0.0	0	0.0
18 to <65 years	0	0.0	2	0.1	0	0.0	0	0.0	0	0.0	2	<0.1
65 to <75 years	0	0.0	0	0.0	0	0.0	0	0.0	0	0.0	0	0.0
75+ years	0	0.0	0	0.0	0	0.0	0	0.0	0	0.0	0	0.0
<b>Total</b>	<b>0</b>	<b>0.0</b>	<b>3</b>	<b>0.1</b>	<b>0</b>	<b>0.0</b>	<b>1</b>	<b>0.0</b>	<b>0</b>	<b>0.0</b>	<b>4</b>	<b>0.1</b>

**Table 3B: Cumulative Influenza cases (and age specific rates), by subtype, by age group, Calgary Zone (Aug 29 – Dec 4, 2010)**

	Flu A (Seasonal-H1)		Flu A (Seasonal-H3)		Flu A (Pandemic H1N1 2009)		Flu A (unresolved typing)		Flu B		Total	
	#	Rate (per 10,000)	#	Rate (per 10,000)	#	Rate (per 10,000)	#	Rate (per 10,000)	#	Rate (per 10,000)	#	Rate (per 10,000)
0 to <2 years	0	0.0	1	0.3	0	0.0	0	0.0	0	0.0	1	0.3
2 to <5 years	0	0.0	0	0.0	0	0.0	1	0.2	0	0.0	1	0.2
5 to <9 years	0	0.0	1	0.2	0	0.0	0	0.0	0	0.0	1	0.2
9 to <18 years	0	0.0	0	0.0	0	0.0	0	0.0	0	0.0	0	0.0
18 to <65 years	0	0.0	4	0.1	0	0.0	1	<0.1	0	0.0	5	0.1
65 to <75 years	0	0.0	1	0.1	0	0.0	0	0.0	0	0.0	1	0.1
75+ years	0	0.0	2	0.3	0	0.0	0	0.0	0	0.0	2	0.3
<b>Total</b>	<b>0</b>	<b>0.0</b>	<b>9</b>	<b>0.1</b>	<b>0</b>	<b>0.0</b>	<b>2</b>	<b>&lt;0.1</b>	<b>0</b>	<b>0.0</b>	<b>11</b>	<b>0.1</b>

Source: Outbreak Response Toolkit (includes cases with positive respiratory specimens received on or before Dec 4, 2010).

Population data values used to calculate rates are for June 30, 2009 and are estimated using actual population values from the Alberta Health Care Insurance Plan (AHCIP) Registration File as of March 31, 2009.

For more information on data definitions and sources see [Annex: Data Notes section at the end of this report](#)

## SURVEILLANCE AND HEALTH STATUS ASSESSMENT

### Public Health Surveillance

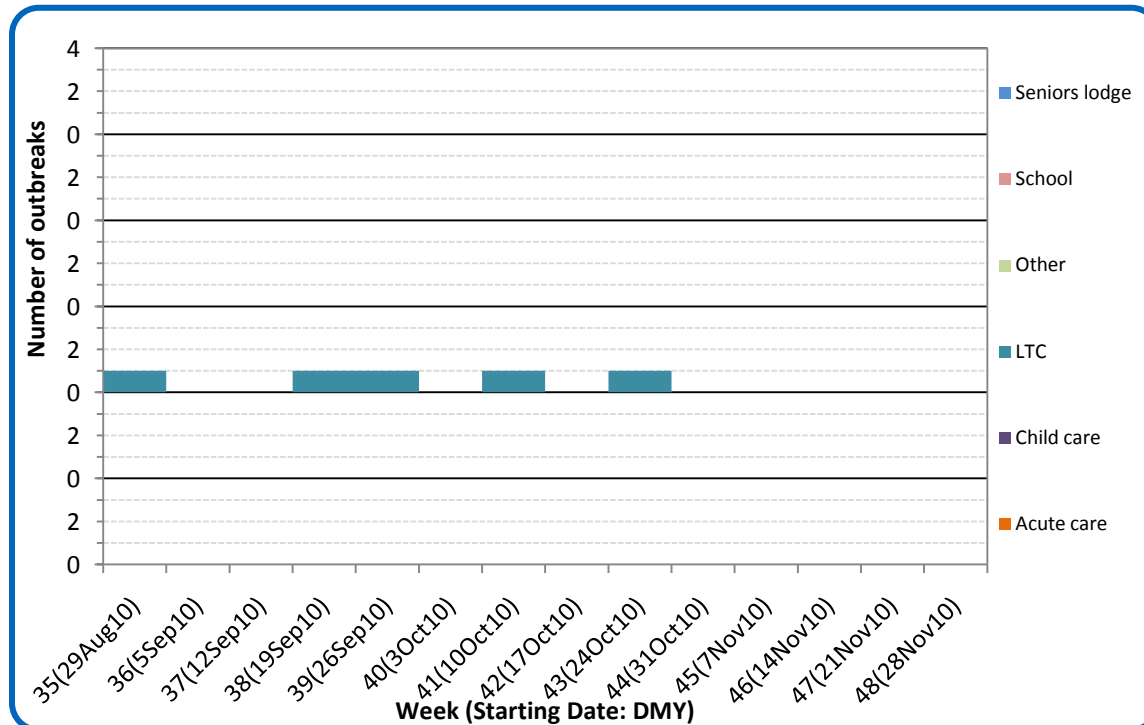
Report Date: December 7, 2010

An influenza report targeted to the general public is available at: <http://www.health.alberta.ca/health-info/influenza-evidence.html>

[Back to first page](#)

There have been no laboratory confirmed reports of respiratory outbreaks from the Calgary zone since Week 43 (Oct 24 - 30). The outbreak mentioned in last week's report for week 47 (Nov 21-27) was not confirmed as all four specimens submitted for laboratory testing were negative for all respiratory viruses.

Figure 3D: Respiratory outbreaks, by facility type, by onset week, Calgary Zone (2010); school outbreaks may not have a laboratory confirmation)



Source: Alberta Outbreak Reporting Form as of 23:59 on December 4, 2010.

For more information on data definitions and sources see [Annex: Data Notes section at the end of this report](#)

SURVEILLANCE AND HEALTH STATUS ASSESSMENT

Public Health Surveillance

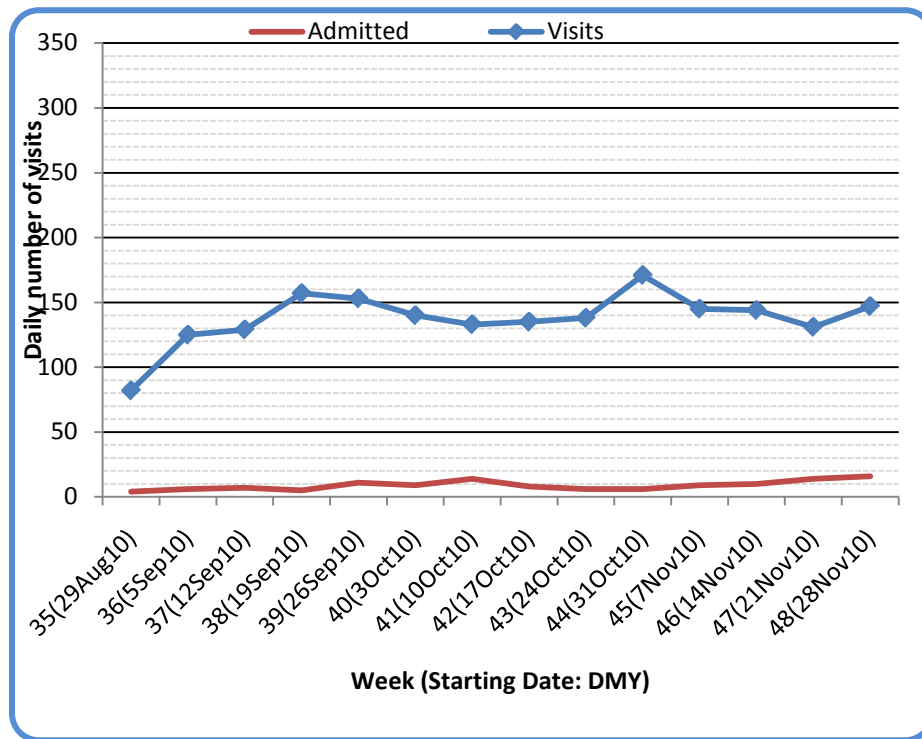
Report Date: December 7, 2010

An influenza report targeted to the general public is available at: <http://www.health.alberta.ca/health-info/influenza-evidence.html>

[Back to first page](#)

The number of visits to emergency departments/urgent care centers by residents of the City of Calgary peaked slightly at the end of October, and has remained consistent since then. The number of hospital admissions for patients with cough symptoms is the highest it has been this season. The number of patients with cough symptoms that left EDs without being seen declined by 33% in Week 48 from the level reported in Week 47.

**Figure 3E: Visits to urban emergency departments/urgent care centers in the City of Calgary with cough symptoms and admissions to hospitals, by visit week (2010)**



Source: Alberta Real Time Syndromic Surveillance Net (ARTSSN) as of 23:59 on December 4, 2010. For more information on data definitions and sources see [Annex: Data Notes section at the end of this report](#)

**SURVEILLANCE AND HEALTH STATUS ASSESSMENT**

**Public Health Surveillance**

Report Date: December 7, 2010

An influenza report targeted to the general public is available at: <http://www.health.alberta.ca/health-info/influenza-evidence.html>

[Back to first page](#)

### Attack rates in respiratory outbreaks

There have been no laboratory confirmed respiratory outbreaks in the Calgary Zone since Week 43 (Oct 24-30).

### Influenza-like illness visits and “Left Without Being seen”

The number of visits to urban emergency departments/ urgent care centers (EDs) for influenza-like illness (ILI) in the City of Calgary has maintained a general upward trend since late August. Both the number of hospital admissions and the number of visits of patients with ILI who left EDs without being seen in Week 48 (Nov 28 – Dec 4) were similar to those in the previous week.

### Respiratory related calls to Health Link Alberta

The number of calls to Health Link Alberta for cough or breathing difficulties by residents of the Calgary Zone was marginally higher in Week 48 (Nov 28 – Dec 4) than in Week 47. This indicator has also maintained a general increasing trend since late August.

### Percentage of visits to sentinel offices with influenza-like illness (ILI)

The percentage of ILI-related visits to sentinel physician offices by residents of the Calgary Zone in Week 47 (Nov 21-27) was 11% lower than in Week 46.

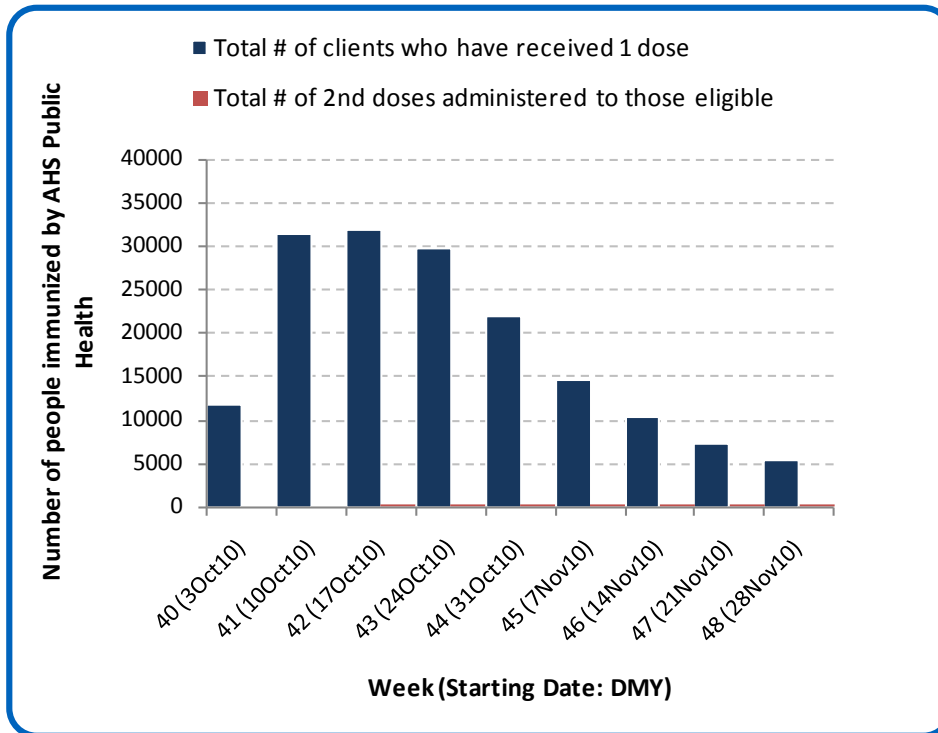
### Percentage of visits to sentinel offices with lower respiratory tract infection (LRTI)

The percentage of LRTI-related visits to sentinel physician offices by residents of the Calgary Zone in Week 47 (Nov 21 -27) was 93% lower than in Week 46.

The combined percentage for ILI- and LRTI-related visits in Week 47 (Nov 21 -27) was 63% lower than in Week 46, returning to the level seen in the previous weeks.

[Back to first page](#)

Figure 3F: Number Immunized by AHS (Public Health), by week, Calgary Zone (2010)



Source: AHS Zones (doses do not include those delivered by external providers)  
 Note: Immunization coverage rates will be reported at the end of the influenza season  
 For more information on data definitions and sources see [Annex: Data Notes section at the end of this report](#)

**SURVEILLANCE AND HEALTH STATUS ASSESSMENT**

**Public Health Surveillance**

Report Date: December 7, 2010

An influenza report targeted to the general public is available at: <http://www.health.alberta.ca/health-info/influenza-evidence.html>

Table 3C: AHS (Public Health) Delivered Influenza Immunizations (with Cumulative totals), by priority group, Calgary Zone (2010)

[Back to first page](#)

Priority Group	Number Immunized (Week 48 – Nov 28-Dec 4, 2010)	Cumulative Number Immunized (since Oct 3, 2010)
Long term care staff	3	432
Health care workers	109	4,971
Pregnant women	84	1,506
Residents of long term care	0	703
65 years of age and over	564	42,808
All children 6 months up to and including 23 months*	Dose #1	648
	Dose #2	312
All children 24 months up to and including 59 months*	Dose #1	544
	Dose #2	52
High risk: 5 years up to and including 8 years*	Dose #1	83
	Dose #2	0
High risk: 9 years up to and including 64 years	559	17,958
Healthy: 5 years up to and including 8 years*	Dose #1	300
	Dose #2	27
Healthy: 9 years up to and including 64 years	2,528	71,766
<b>Total number of clients who have received 1 dose</b>	<b>5,422</b>	<b>164,339</b>
<b>Total number of 2nd doses administered to those eligible*</b>	<b>391</b>	<b>1,142</b>

Source: AHS Zones (doses do not include those delivered by external providers)

\*Children under 9 years of age who have not received at least one dose of seasonal influenza vaccine in past years require two doses, given at least four weeks apart.

Note: Immunization coverage rates will be reported at the end of the influenza season

For more information on data definitions and sources see [Annex: Data Notes section at the end of this report](#)

## SURVEILLANCE AND HEALTH STATUS ASSESSMENT

### Public Health Surveillance

Report Date: December 7, 2010

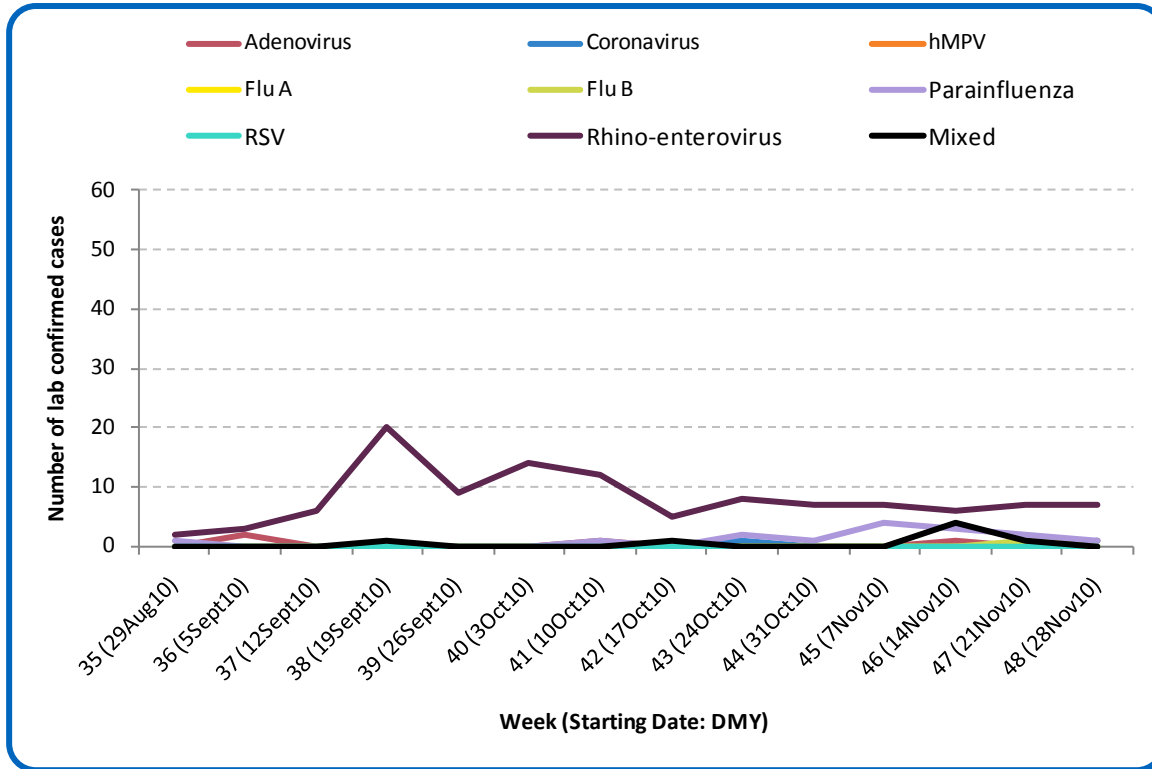
An influenza report targeted to the general public is available at: <http://www.health.alberta.ca/health-info/influenza-evidence.html>

SECTION 4: ZONE 3 - CENTRAL

[Back to first page](#)

No new cases of influenza were confirmed in the Central Zone last week. One case of influenza B has been confirmed in this zone this season.

Figure 4A: Laboratory confirmed respiratory virus cases, by virus type, by week, Central Zone (2010)



Sources: DIAL – Provincial Laboratory and the Outbreak Response Toolkit (includes cases with positive respiratory specimens received on or before Dec 4, 2010). For more information on data definitions and sources see [Annex: Data Notes section at the end of this report](#)

SURVEILLANCE AND HEALTH STATUS ASSESSMENT

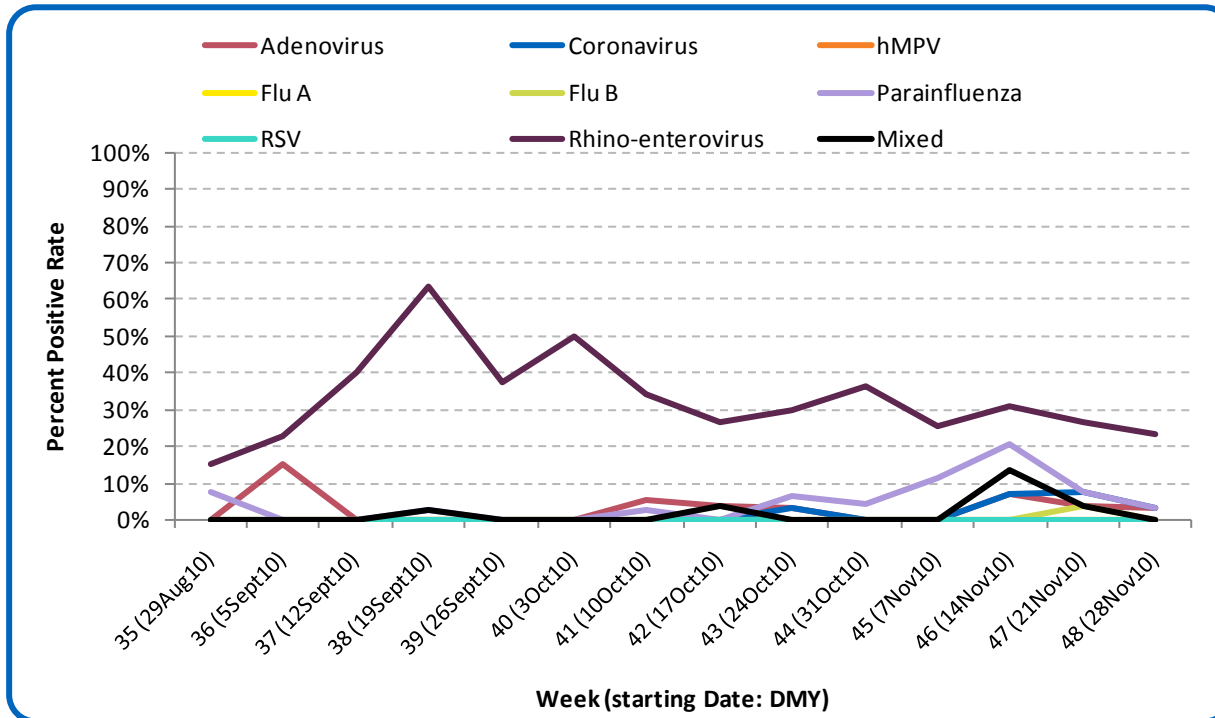
Public Health Surveillance

Report Date: December 7, 2010

An influenza report targeted to the general public is available at: <http://www.health.alberta.ca/health-info/influenza-evidence.html>

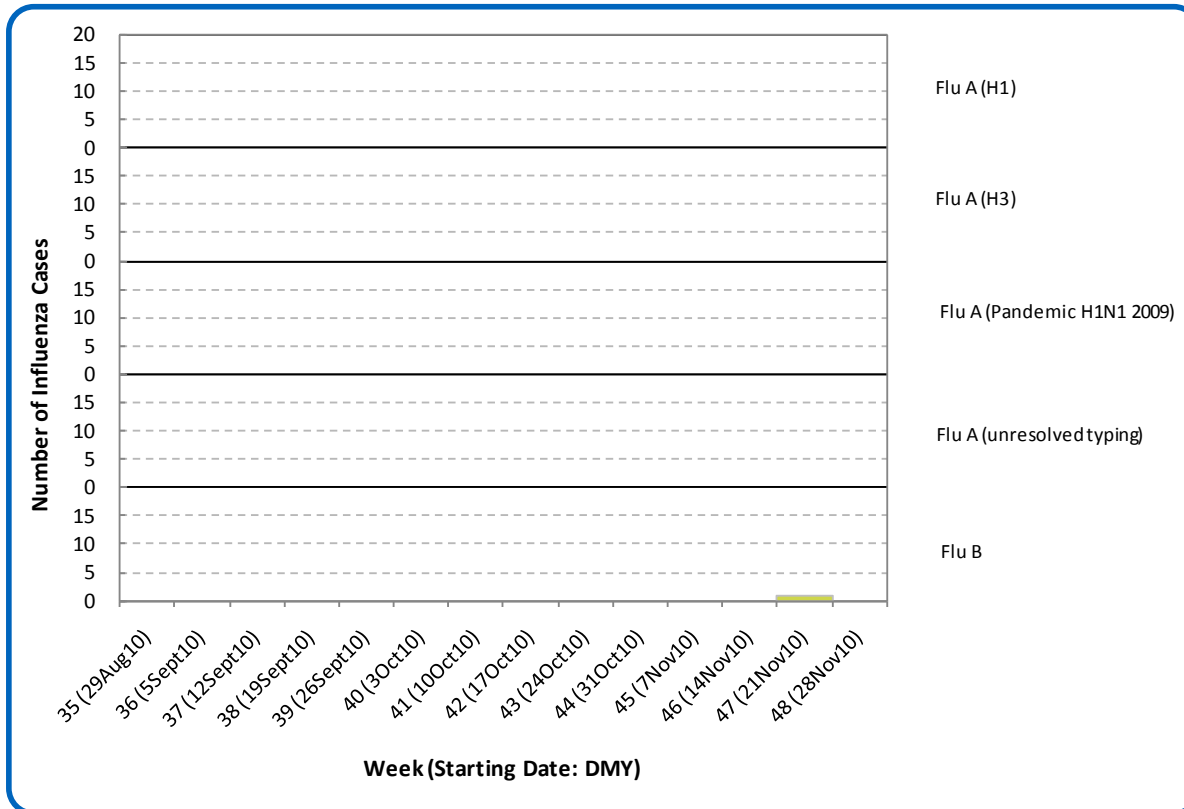
Figure 4B: Respiratory Specimen Percent Positive Rates, by virus type, by week, Central Zone (2010)

[Back to first page](#)



Source: DIAL – Provincial Laboratory (includes cases with positive respiratory specimens received on or before Dec 4, 2010)  
For more information on data definitions and sources see [Annex: Data Notes section at the end of this report](#)

Figure 4C: Laboratory confirmed Influenza cases, by subtype, by week specimen received, Central Zone (2010)



Source: Outbreak Response Toolkit (includes cases with positive respiratory specimens received on or before Dec 4, 2010). For more information on data definitions and sources see [Annex: Data Notes section at the end of this report](#)

[Back to first page](#)

**Table 4A: Cumulative Influenza cases (and age specific rates), by subtype, by age group, Central Zone (Aug 29 – Dec 4, 2010)**

	Flu A (Seasonal-H1)		Flu A (Seasonal-H3)		Flu A (Pandemic H1N1 2009)		Flu A (unresolved typing)		Flu B		Total	
	#	Rate (per 10,000)	#	Rate (per 10,000)	#	Rate (per 10,000)	#	Rate (per 10,000)	#	Rate (per 10,000)	#	Rate (per 10,000)
<b>0 to &lt;2 years</b>	0	0.0	0	0.0	0	0.0	0	0.0	0	0.0	0	0.0
<b>2 to &lt;5 years</b>	0	0.0	0	0.0	0	0.0	0	0.0	0	0.0	0	0.0
<b>5 to &lt;9 years</b>	0	0.0	0	0.0	0	0.0	0	0.0	0	0.0	0	0.0
<b>9 to &lt;18 years</b>	0	0.0	0	0.0	0	0.0	0	0.0	0	0.0	0	0.0
<b>18 to &lt;65 years</b>	0	0.0	0	0.0	0	0.0	0	0.0	1	<0.1	1	<0.1
<b>65 to &lt;75 years</b>	0	0.0	0	0.0	0	0.0	0	0.0	0	0.0	0	0.0
<b>75+ years</b>	0	0.0	0	0.0	0	0.0	0	0.0	0	0.0	0	0.0
<b>Total</b>	0	0.0	0	0.0	0	0.0	0	0.0	1	<0.1	1	<0.1

Source: Outbreak Response Toolkit (includes cases with positive respiratory specimens received on or before *Dec 4, 2010*).

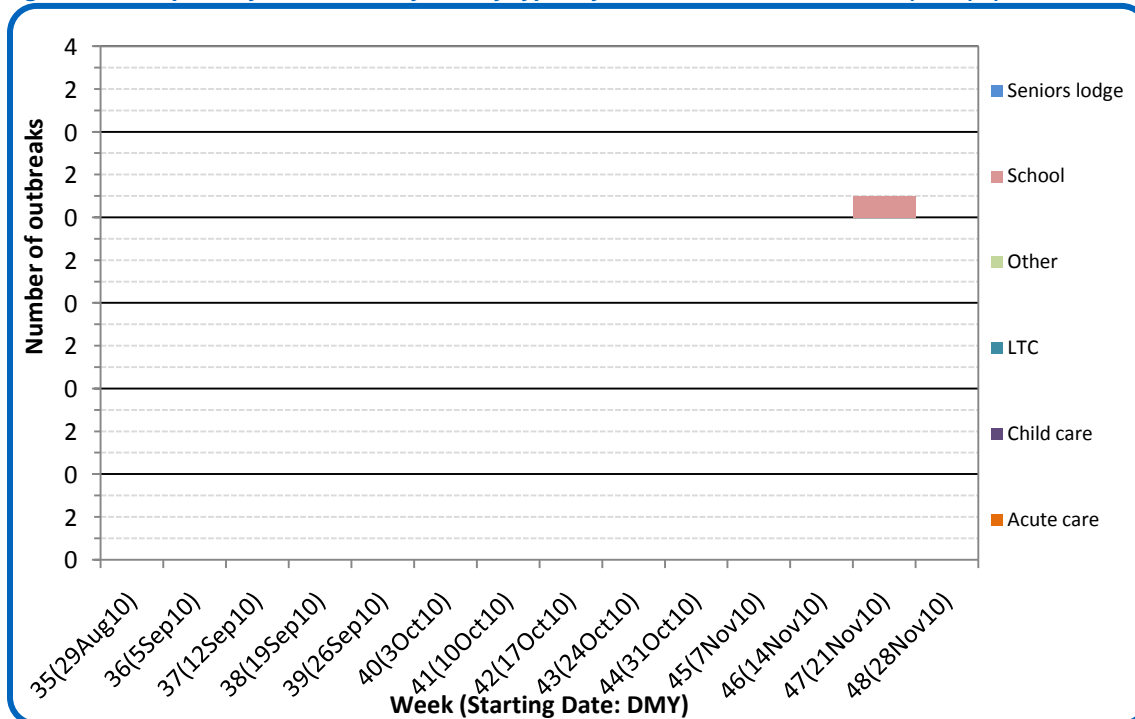
Population data values used to calculate rates are for June 30, 2009 and are estimated using actual population values from the Alberta Health Care Insurance Plan (AHCIP) Registration File as of March 31, 2009.

For more information on data definitions and sources see [Annex: Data Notes section at the end of this report](#)

[Back to first page](#)

One respiratory outbreak occurred in a school (K-12) in Week 47 (Nov 21-27) in the Central Zone; the causative agent has not yet been confirmed by laboratory tests.

Figure 4D: Respiratory outbreaks, by facility type, by onset week, Central Zone (2010); (school outbreaks may not have a laboratory confirmation)



Source: Alberta Outbreak Reporting Form as of 23:59 on December 4, 2010.  
For more information on data definitions and sources see Annex: Data Notes section at the end of this report

SURVEILLANCE AND HEALTH STATUS ASSESSMENT

Public Health Surveillance  
Report Date: December 7, 2010

An influenza report targeted to the general public is available at: <http://www.health.alberta.ca/health-info/influenza-evidence.html>

[Back to first page](#)

### Attack Rates in respiratory outbreaks

The school respiratory outbreak occurring in Week 47 (Nov 21-27) in the Central Zone has a preliminary attack rate of 13%.

### Influenza-like illness visits and “Left Without Being seen”

There are no data available from this zone.

### Respiratory related calls to Health Link Alberta

The number of calls to Health Link Alberta by residents of the Central Zone for cough or breathing difficulties was 21% higher in Week 48 (Nov 28 – Dec 4) than in Week 47, the highest it has been this season.

### Percentage of visits to sentinel offices with Influenza-like illness (ILI)

There were no reports of ILI-related visits to sentinel physician offices by residents of the Central Zone in Week 47 (Nov 21-27).

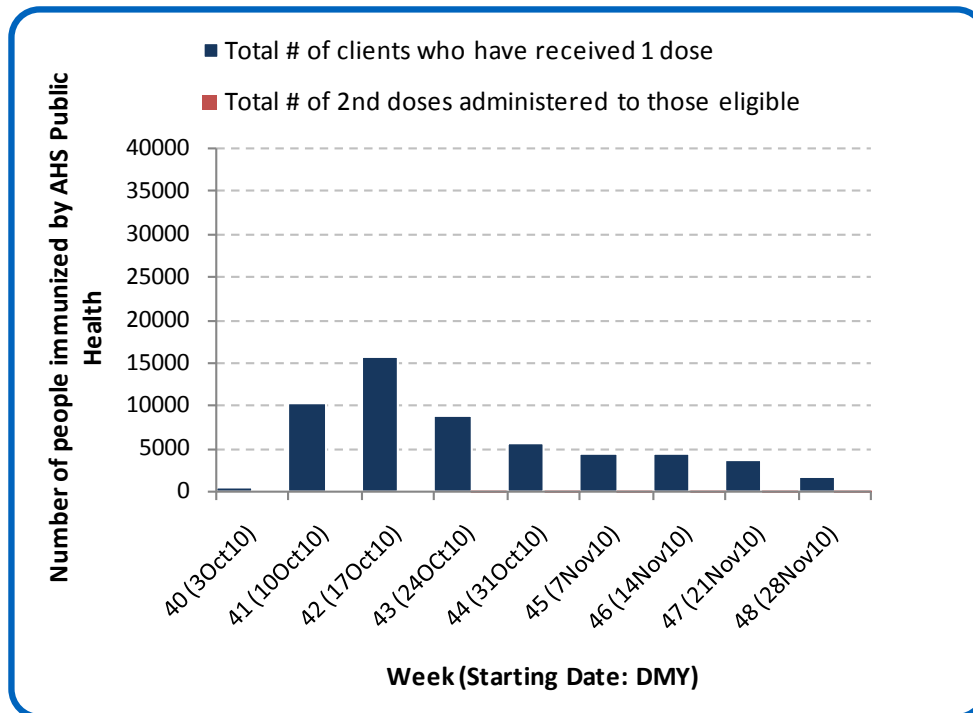
### Percentage of visits to sentinel offices with lower respiratory tract infection (LTRI)

The percentage of LTRI-related visits to sentinel physician offices by residents of the Central Zone in Week 47 (Nov 21-27) was 2.5%, the highest it has been this season.

The combined percentage of ILI- and LTRI-related visits to sentinel physician offices by residents of the Central Zone was 2.5%, the highest it has been since late August.

[Back to first page](#)

Figure 4E: Number Immunized by AHS (Public Health), by week, Central Zone (2010)



Source: AHS Zones (doses do not include those delivered by external providers)  
 Note: Immunization coverage rates will be reported at the end of the influenza season  
 For more information on data definitions and sources see [Annex: Data Notes section at the end of this report](#)

[Back to first page](#)

Table 4B: AHS (Public Health) Delivered Influenza Immunizations (with Cumulative totals), by priority group, Central Zone (2010)

Priority Group	Number Immunized (Week 48 – Nov 28-Dec 4, 2010)	Cumulative Number Immunized (since Oct 3, 2010)
Long term care staff	6	352
Health care workers	52	2,332
Pregnant women	24	363
Residents of long term care	3	990
65 years of age and over	366	21,011
All children 6 months up to and including 23 months*	Dose #1	113
	Dose #2	89
All children 24 months up to and including 59 months*	Dose #1	117
	Dose #2	12
High risk: 5 years up to and including 8 years*	Dose #1	25
	Dose #2	2
High risk: 9 years up to and including 64 years	194	6,216
Healthy: 5 years up to and including 8 years*	Dose #1	57
	Dose #2	9
Healthy: 9 years up to and including 64 years	692	18,804
<b>Total number of clients who have received 1 dose</b>	<b>1,649</b>	<b>55,723</b>
<b>Total number of 2nd doses administered to those eligible*</b>	<b>112</b>	<b>305</b>

Source: AHS Zones (doses do not include those delivered by external providers)

\*Children under 9 years of age who have not received at least one dose of seasonal influenza vaccine in past years require two doses, given at least four weeks apart.

Note: Immunization coverage rates will be reported at the end of the influenza season

For more information on data definitions and sources see [Annex: Data Notes section at the end of this report](#)

## SURVEILLANCE AND HEALTH STATUS ASSESSMENT

### Public Health Surveillance

Report Date: December 7, 2010

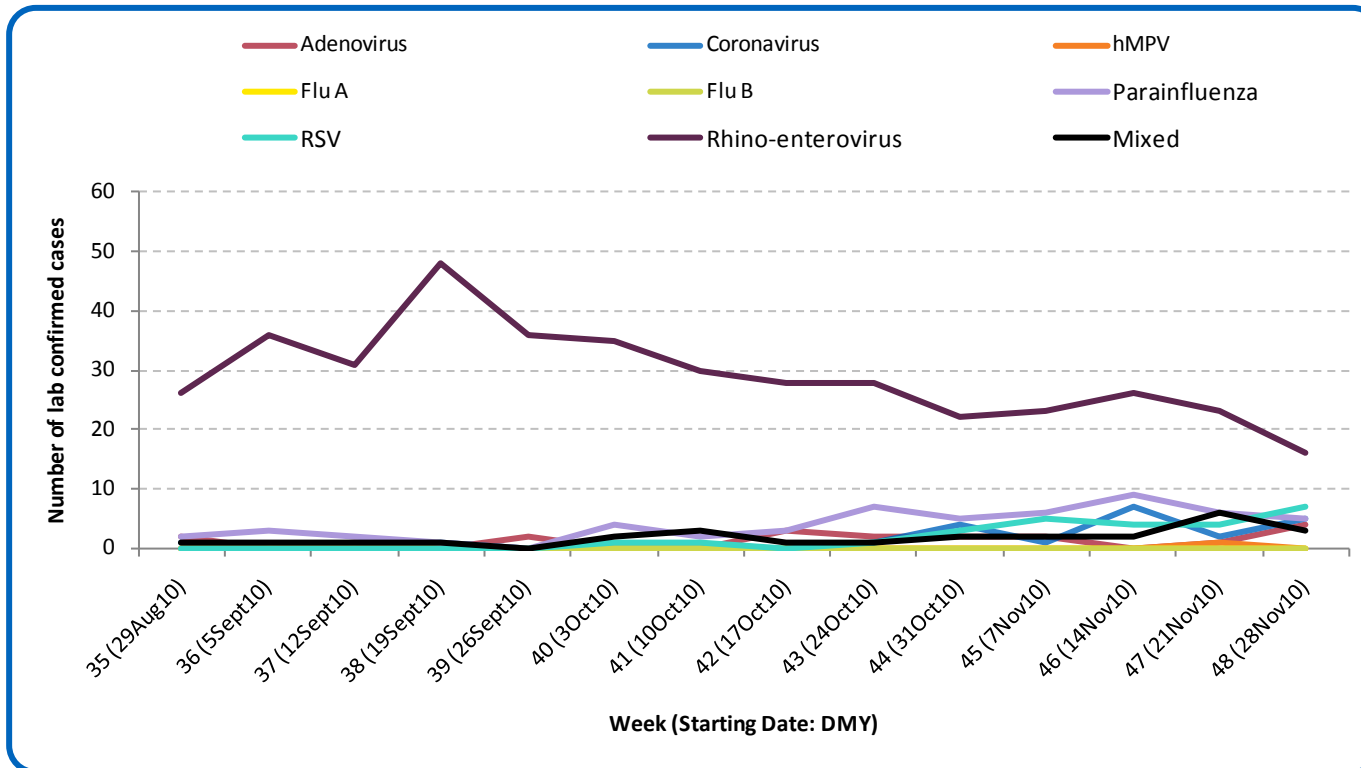
An influenza report targeted to the general public is available at: <http://www.health.alberta.ca/health-info/influenza-evidence.html>

SECTION 5: ZONE 4 – EDMONTON

[Back to first page](#)

Rhino-enterovirus is still the predominant respiratory virus circulating in the Edmonton Zone. Adenovirus, coronavirus, hMPV, parainfluenza and RSV are also circulating. There have been no laboratory confirmed cases of influenza in the Edmonton Zone this season.

Figure 5A: Laboratory confirmed respiratory virus cases, by virus type, by week, Edmonton Zone (2010)



Sources: DIAL – Provincial Laboratory and the Outbreak Response Toolkit (includes cases with positive respiratory specimens received on or before Dec 4, 2010). For more information on data definitions and sources see [Annex: Data Notes section at the end of this report](#)

SURVEILLANCE AND HEALTH STATUS ASSESSMENT

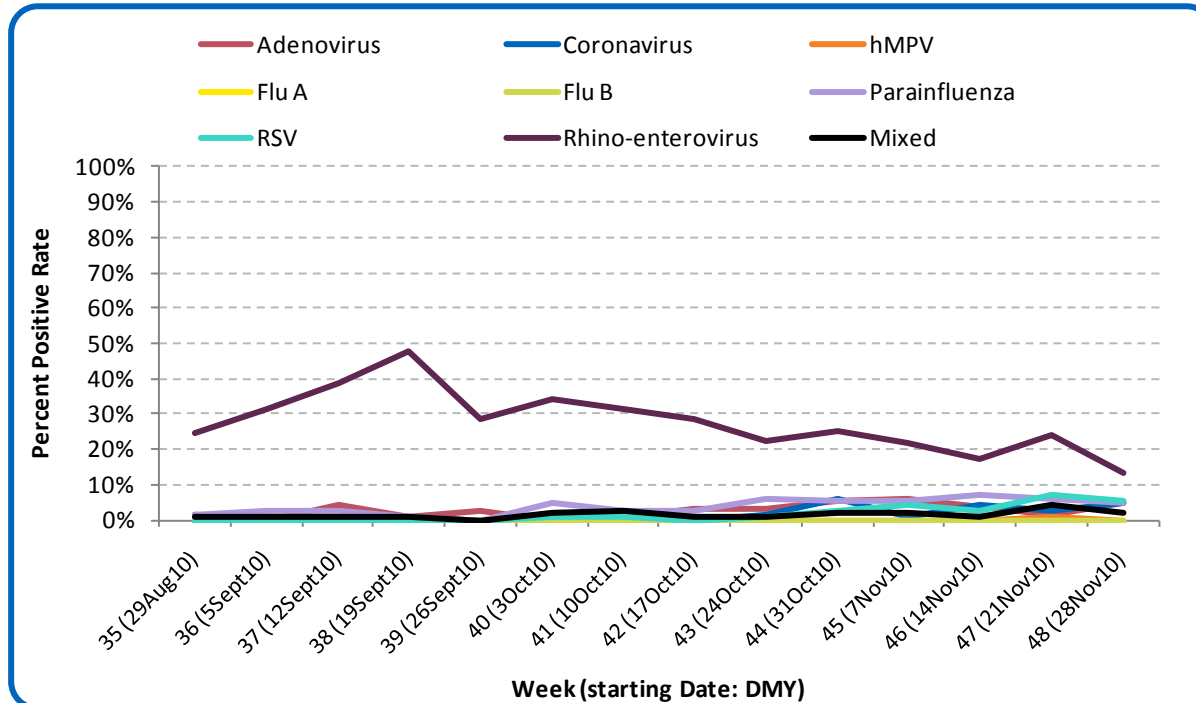
Public Health Surveillance

Report Date: December 7, 2010

An influenza report targeted to the general public is available at: <http://www.health.alberta.ca/health-info/influenza-evidence.html>

[Back to first page](#)

Figure 5B: Respiratory Specimen Percent Positive Rates, by virus type, by week, Edmonton Zone (2010)

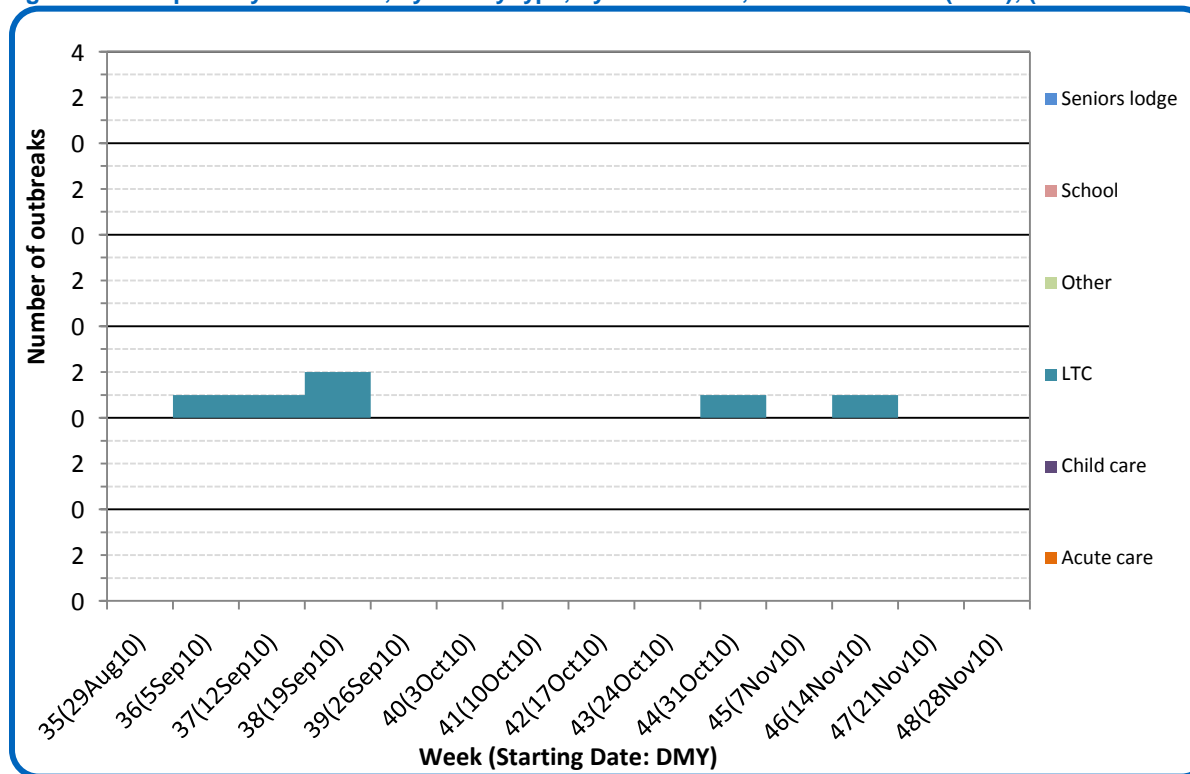


Source: DIAL – Provincial Laboratory (includes cases with positive respiratory specimens received on or before Dec 4, 2010)  
For more information on data definitions and sources see [Annex: Data Notes section at the end of this report](#)

[Back to first page](#)

There have been no respiratory outbreaks in the Edmonton Zone since Week 46 (Nov 14 – Nov 20).

Figure 5C: Respiratory outbreaks, by facility type, by onset week, Edmonton Zone (2010); (school outbreaks may not have a laboratory confirmation)



Source: Alberta Outbreak Reporting Form as of 23:59 on December 4, 2010.  
For more information on data definitions and sources see [Annex: Data Notes section at the end of this report](#)

SURVEILLANCE AND HEALTH STATUS ASSESSMENT

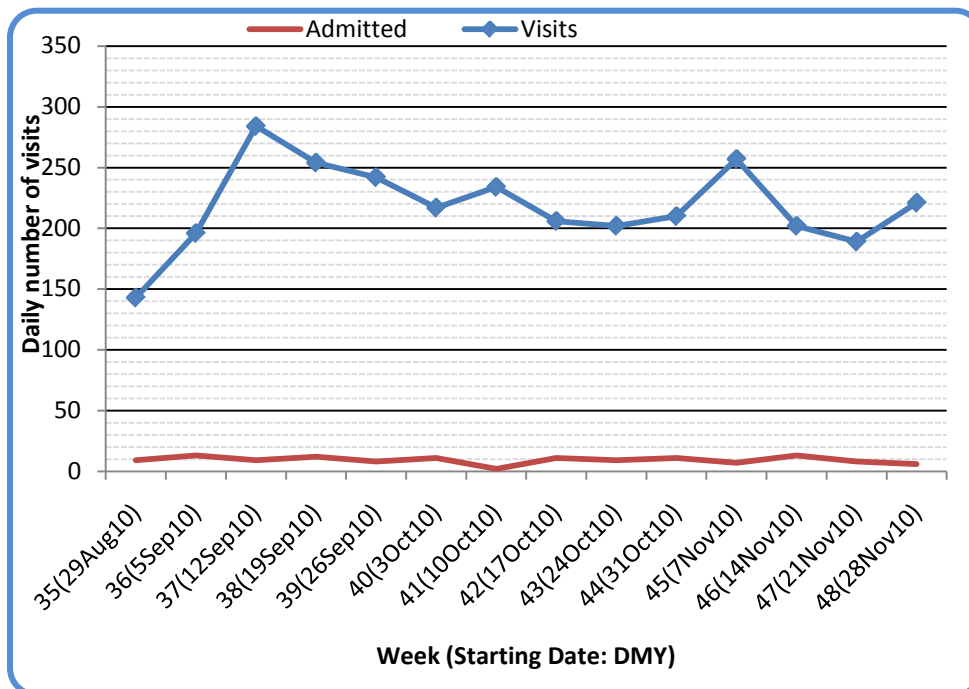
Public Health Surveillance  
Report Date: December 7, 2010

An influenza report targeted to the general public is available at: <http://www.health.alberta.ca/health-info/influenza-evidence.html>

[Back to first page](#)

The number of visits to nine emergency departments/urgent care centers in the Edmonton Zone for cough/congestion in week 48 (Nov 28–Dec 4) increased by 17% compared to the previous week. In contrast, the number of admissions to hospitals of patients with cough/congestion symptoms decreased by 25% in Week 48 compared to Week 47.

Figure 5D: Visits to emergency departments/urgent care centers for cough/congestion and admissions to hospitals, by visit week, Edmonton Zone (2010)



Source: Alberta Real Time Syndromic Surveillance (ARTSSN) as of 23:59 on December 4, 2010. For more information on data definitions and sources see [Annex: Data Notes section at the end of this report](#)

**SURVEILLANCE AND HEALTH STATUS ASSESSMENT**

**Public Health Surveillance**

Report Date: December 7, 2010

An influenza report targeted to the general public is available at: <http://www.health.alberta.ca/health-info/influenza-evidence.html>

[Back to first page](#)

### Attack rates in respiratory outbreaks

There have been no laboratory confirmed respiratory outbreaks in the Edmonton Zone since Week 46 (Nov 14 -20).

### Influenza-like illness visits and “Left Without Being seen”

The number of visits to emergency departments/urgent care centers in Week 48 (Nov 28 – Dec 4) was 7% higher than in Week 47. The number of visits to ED’s for people with ILI that left without being seen in Week 48 increased by 33% compared to Week 47, but was still comparable to the level in previous weeks.

### Respiratory related calls to Health Link Alberta

The number of calls to Health Link Alberta by residents of the Edmonton Zone for cough or breathing difficulties has sustained an upward trend since the beginning of September.

### Percentage of visits to sentinel offices with influenza-like illness (ILI)

The percentage of ILI-related visits to sentinel physician offices by residents of the Edmonton Zone in Week 47 (Nov 21-27) was essentially unchanged from the Week 46 level, remaining very low.

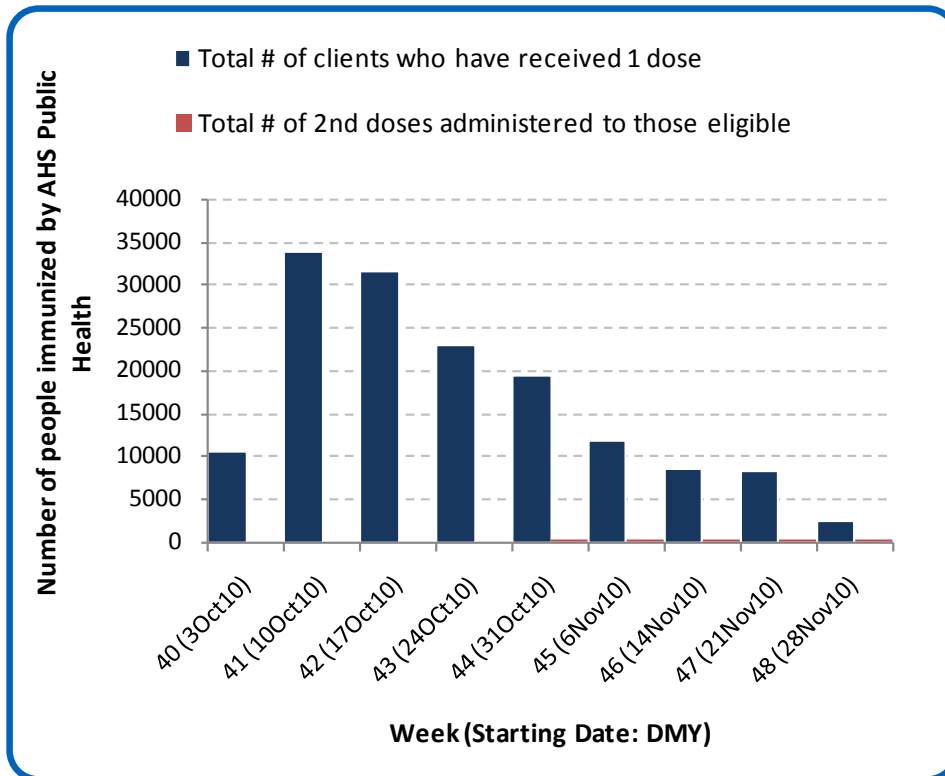
### Percentage of visits to sentinel offices with lower respiratory tract infection (LRTI)

The percentage of LRTI-related visits to sentinel physician offices by residents of the Edmonton Zone in Week 47 (Nov 21-27) was 70% higher than in Week 46, maintaining a generally upward trend since mid September.

The combined percentage of ILI- and LRTI-related visits to sentinel physician offices by residents of the Edmonton Zone was 70% higher in Week 47 from the Week 46 level, the highest it has been since mid October.

[Back to first page](#)

Figure 5E: Number Immunized by AHS (Public Health), by week, Edmonton Zone (2010)



Source: AHS Zones (doses do not include those delivered by external providers)  
 Note: Immunization coverage rates will be reported at the end of the influenza season  
 For more information on data definitions and sources see [Annex: Data Notes section at the end of this report](#)

**SURVEILLANCE AND HEALTH STATUS ASSESSMENT**

**Public Health Surveillance**

Report Date: December 7, 2010

An influenza report targeted to the general public is available at: <http://www.health.alberta.ca/health-info/influenza-evidence.html>

[Back to first page](#)

Table 5A: AHS (Public Health) Delivered Influenza Immunizations (with Cumulative totals), by priority group, Edmonton Zone (2010)

Priority Group	Number Immunized (Week 48 – Nov 28-Dec 4, 2010)	Cumulative Number Immunized (since Oct 3, 2010)
Long term care staff	10	325
Health care workers	87	4,447
Pregnant women	42	1,222
Residents of long term care	3	1,028
65 years of age and over	333	47,048
All children 6 months up to and including 23 months*	Dose #1	4,594
	Dose #2	731
All children 24 months up to and including 59 months*	Dose #1	6,298
	Dose #2	165
High risk: 5 years up to and including 8 years*	Dose #1	1,190
	Dose #2	14
High risk: 9 years up to and including 64 years	331	16,167
Healthy: 5 years up to and including 8 years*	Dose #1	4,877
	Dose #2	90
Healthy: 9 years up to and including 64 years	999	62,542
<b>Total number of clients who have received 1 dose</b>	<b>2,425</b>	<b>149,738</b>
<b>Total number of 2nd doses administered to those eligible*</b>	<b>177</b>	<b>1,000</b>

Source: AHS Zones (doses do not include those delivered by external providers)

\*Children under 9 years of age who have not received at least one dose of seasonal influenza vaccine in past years require two doses, given at least four weeks apart.

Note: Immunization coverage rates will be reported at the end of the influenza season

For more information on data definitions and sources see [Annex: Data Notes section at the end of this report](#)

## SURVEILLANCE AND HEALTH STATUS ASSESSMENT

### Public Health Surveillance

Report Date: December 7, 2010

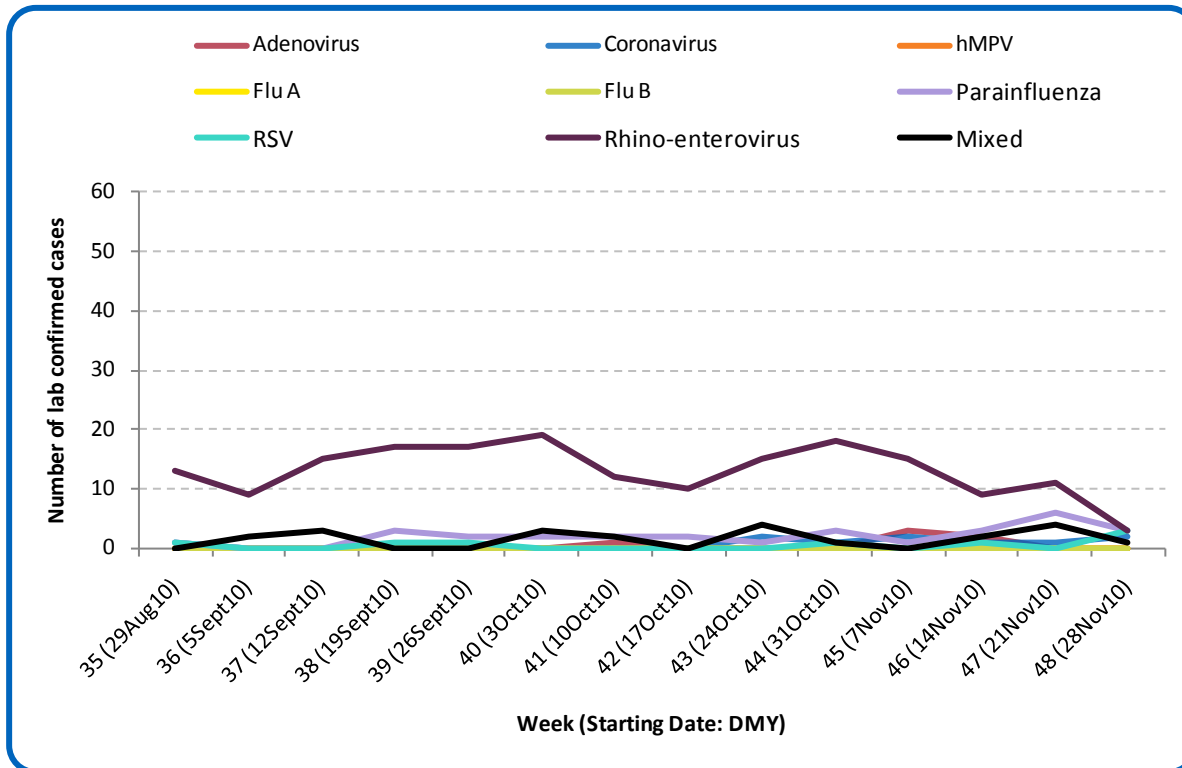
An influenza report targeted to the general public is available at: <http://www.health.alberta.ca/health-info/influenza-evidence.html>

SECTION 6: ZONE 5 – NORTH

[Back to first page](#)

In the past two weeks, cases of coronavirus, parainfluenza, RSV and rhino-enterovirus have been confirmed in the North Zone. There have been no laboratory confirmed cases of influenza in the North Zone this season.

Figure 6A: Laboratory confirmed respiratory virus cases, by virus type, by week, North Zone (2010)



Sources: DIAL – Provincial Laboratory and the Outbreak Response Toolkit (includes cases with positive respiratory specimens received on or before Dec 4, 2010). For more information on data definitions and sources see [Annex: Data Notes section at the end of this report](#)

SURVEILLANCE AND HEALTH STATUS ASSESSMENT

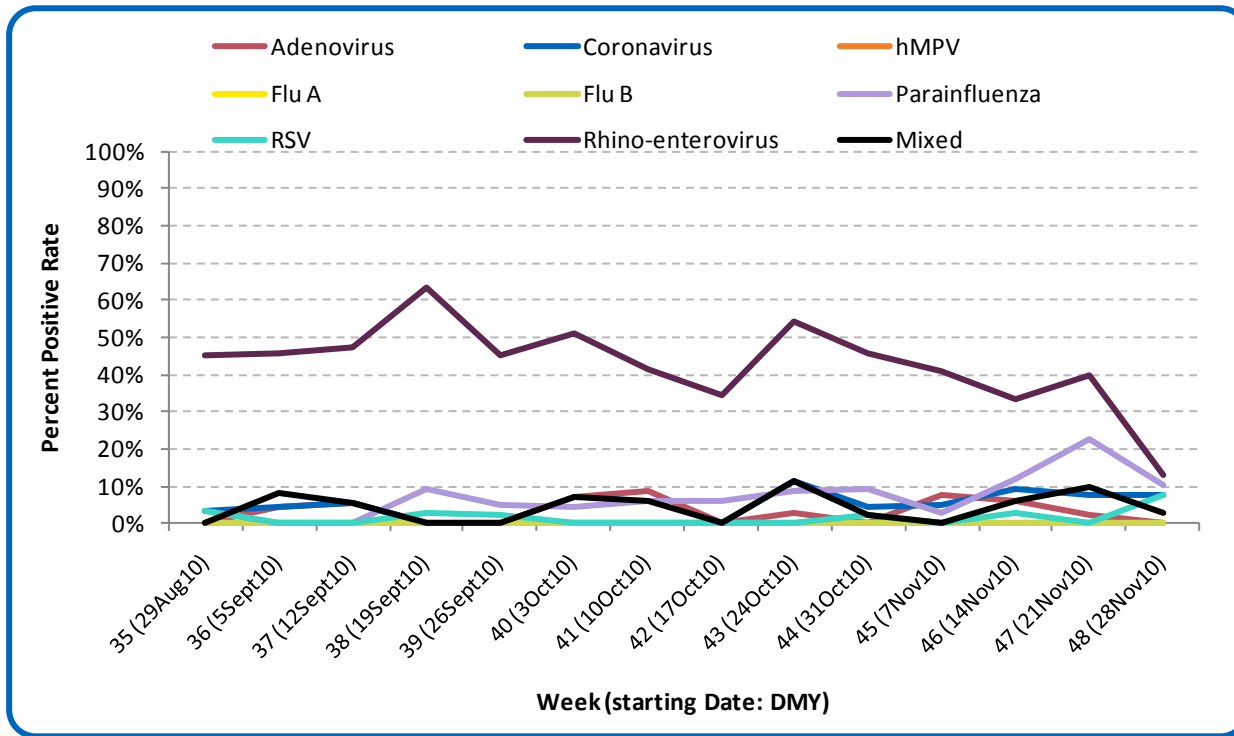
Public Health Surveillance

Report Date: December 7, 2010

An influenza report targeted to the general public is available at: <http://www.health.alberta.ca/health-info/influenza-evidence.html>

[Back to first page](#)

Figure 6B: Respiratory Specimen Percent Positive Rates, by virus type, by week, North Zone (2010)

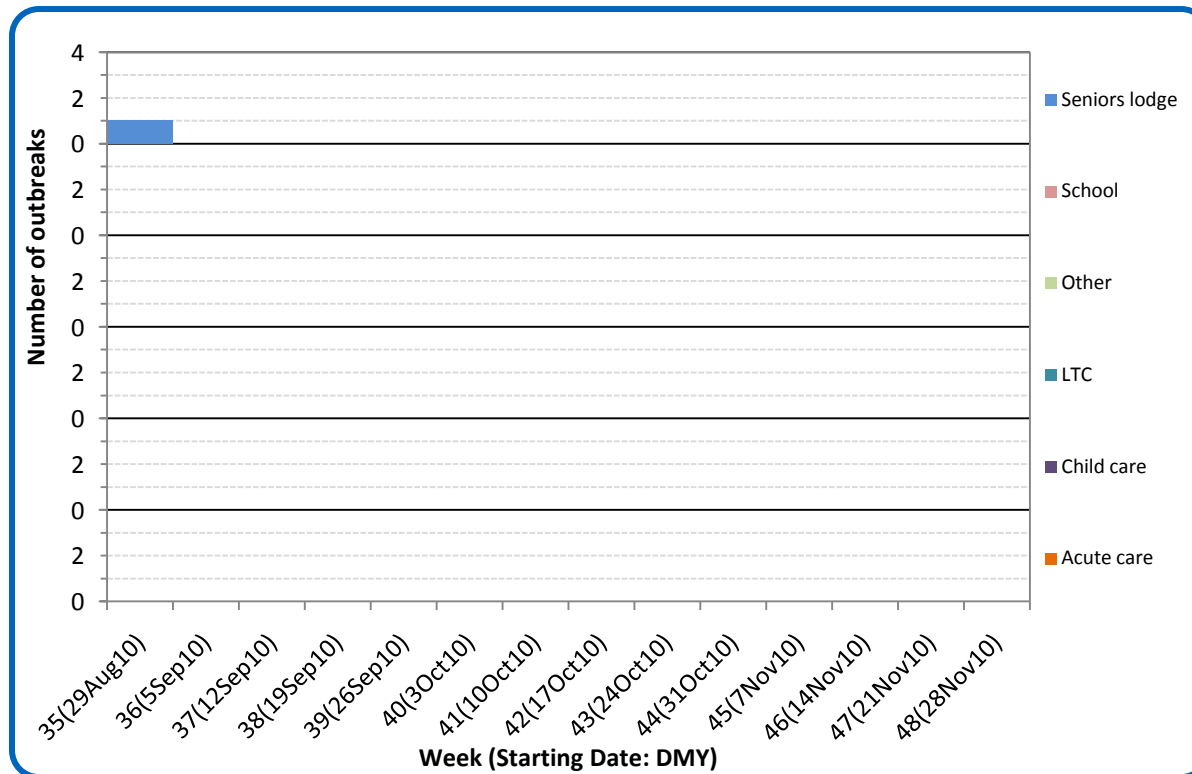


Source: DIAL – Provincial Laboratory (includes cases with positive respiratory specimens received on or before Dec 4, 2010)  
For more information on data definitions and sources see [Annex: Data Notes section at the end of this report](#)

[Back to first page](#)

Since late August, there have been no respiratory outbreaks reported from the North Zone.

Figure 6C: Respiratory outbreaks, by facility type, by onset week, North Zone (2010); (school outbreaks may not have a laboratory confirmation)



Source: Alberta Outbreak Reporting Form as of 23:59 on December 4, 2010  
 For more information on data definitions and sources see [Annex: Data Notes section at the end of this report](#)

**SURVEILLANCE AND HEALTH STATUS ASSESSMENT**

**Public Health Surveillance**  
 Report Date: December 7, 2010

An influenza report targeted to the general public is available at: <http://www.health.alberta.ca/health-info/influenza-evidence.html>

[Back to first page](#)

### Attack rates in respiratory outbreaks

There have been no reports of respiratory outbreaks in the North Zone since the beginning of September.

### Influenza-like illness visits and “Left Without Being seen”

There are no data available for the North Zone.

### Respiratory related calls to Health Link

The number of calls to Health Link Alberta by residents of the North Zone for cough and breathing difficulties in Week 48 (Nov 28 – Dec 4) was marginally lower than in Week 47.

### Percentage of visits to sentinel offices with Influenza-like illness

The percentage of ILI-related visits to sentinel physician offices by residents of the North Zone in Week 47 (Nov 21-27) was half of that in Week 46 and considered low by historic comparison for the Zone.

### Percentage of visits to sentinel offices with lower respiratory tract infection

There were reports of LRTI-related visits to sentinel physician offices by residents of the North Zone in Week 47 (Nov 21-27), with the LRTI percentage of all visits being 2.7%, the highest it has been since late August.

The combined percentage of ILI- and LRTI-related visits to sentinel physician offices by residents of the North Zone was 3.8%, a 72% increase from the Week 46 level. This increase was due to the increase in LRTI-related visits.

## SURVEILLANCE AND HEALTH STATUS ASSESSMENT

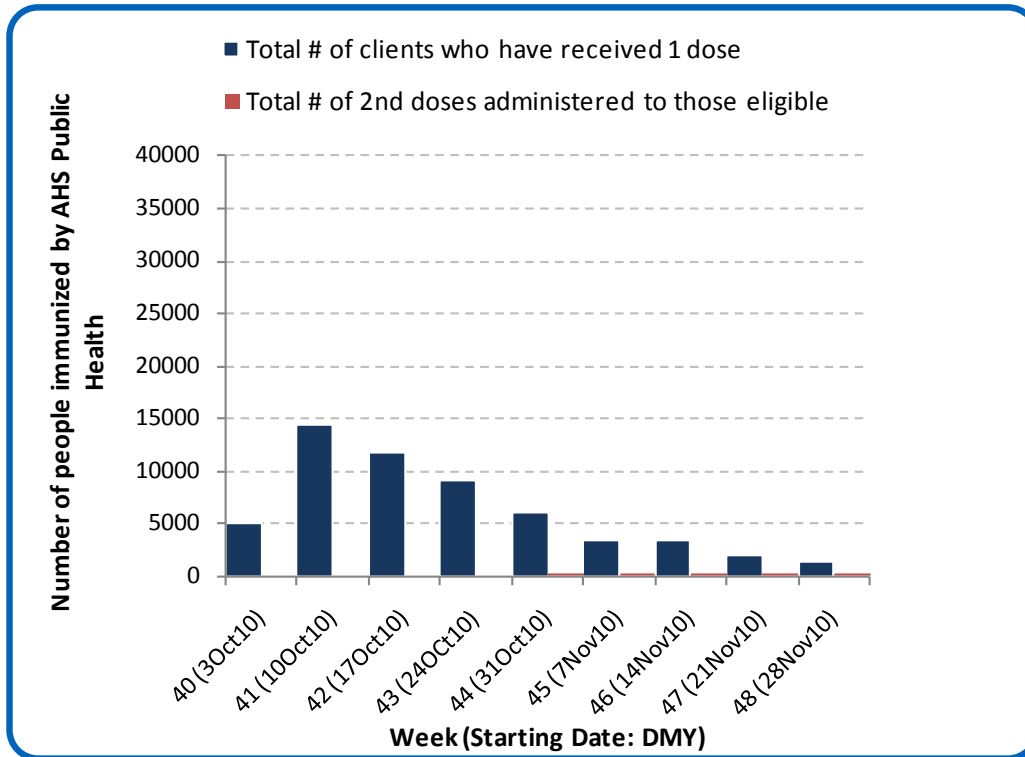
### Public Health Surveillance

Report Date: December 7, 2010

An influenza report targeted to the general public is available at: <http://www.health.alberta.ca/health-info/influenza-evidence.html>

[Back to first page](#)

Figure 6D: Number Immunized by AHS (Public Health), by week, North Zone (2010)



Source: AHS Zones (doses do not include those delivered by external providers)  
 Note: Immunization coverage rates will be reported at the end of the influenza season  
 For more information on data definitions and sources see [Annex: Data Notes section at the end of this report](#)

[Back to first page](#)

Table 6A: AHS (Public Health) Delivered Influenza Immunizations (with Cumulative totals), by priority group, North Zone (2010)

Priority Group	Number Immunized (Week 48 – Nov 28-Dec 4, 2010)	Cumulative Number Immunized (since Oct 3, 2010)
Long term care staff	8	722
Health care workers	63	4,216
Pregnant women	22	465
Residents of long term care	6	1,238
65 years of age and over	225	15,142
All children 6 months up to and including 23 months*	Dose #1	117
	Dose #2	80
All children 24 months up to and including 59 months*	Dose #1	94
	Dose #2	10
High risk: 5 years up to and including 8 years*	Dose #1	18
	Dose #2	2
High risk: 9 years up to and including 64 years	191	7,177
Healthy: 5 years up to and including 8 years*	Dose #1	50
	Dose #2	10
Healthy: 9 years up to and including 64 years	535	20,844
<b>Total number of clients who have received 1 dose</b>	<b>1,329</b>	<b>56,676</b>
<b>Total number of 2nd doses administered to those eligible*</b>	<b>102</b>	<b>366</b>

Source: AHS Zones (doses do not include those delivered by external providers)

\*Children under 9 years of age who have not received at least one dose of seasonal influenza vaccine in past years require two doses, given at least four weeks apart.

Note: Immunization coverage rates will be reported at the end of the influenza season

For more information on data definitions and sources see [Annex: Data Notes section at the end of this report](#)

## SURVEILLANCE AND HEALTH STATUS ASSESSMENT

### Public Health Surveillance

Report Date: December 7, 2010

An influenza report targeted to the general public is available at: <http://www.health.alberta.ca/health-info/influenza-evidence.html>

## ANNEX: DATA NOTES

[Back to first page](#)

### LABORATORY

Information on laboratory confirmed respiratory virus activity in Alberta is based on data from 2 sources:

- 1) Non-influenza viruses: The Alberta Provincial Public Health Laboratory DIAL system (Data Integration for Alberta Laboratories) – a specimen based system. Cases are determined by rationalizing samples from the same patient with the same virus identified within a 30-day period. The information (i.e. received date) from the first sample identifying the identical virus is used in this report.
- 2) Influenza viruses: The Alberta influenza Case Management System – an influenza case based system.

Both data sources are web-based applications supported by the Canadian Network for Public Health Intelligence.

The data in this report are based on specimens obtained from residents of Alberta; according to the date the specimen was received by the laboratory.

Definition for “mixed” – a single sample where multiple viral organisms were isolated.

### INFLUENZA-LIKE ILLNESS

Four data sources are used to provide information on utilization of primary and acute care services by people with Influenza-Like Illness (ILI). *Caution: Each source uses potentially different definitions of ILI.*

1. Primary care summaries are obtained from the TARRANT system. Patients seen by TARRANT physicians may not be representative of the general population. Reported ILI cases represent people seen by TARRANT physicians, according to the date seen by the physician. The percentage of ILI represents the proportion of patients with ILI of all patients seen by the physician.
2. In addition to reporting visits of patients with ILI, TARRANT physicians also report visits with lower respiratory tract infections (LRTI). Each visit is recorded only once, even if a patient has symptoms consistent with ILI and LRTI. The combined ILI- and LRTI-related visits are therefore suggestive of overall respiratory infections in the patient population.
3. Information on visits for ILI in Emergency Departments (ED) and urgent care centers are provided by the Alberta Real Time Syndromic Surveillance Net (ARTSSN) data repository. ILI designation is based on patients being screened in emergency departments with an ILI screening tool. The primary purpose of the ILI screening tool is to implement appropriate infection control measures. The original data sources fed to the ARTSSN data repository are EDIS (Emergency Department Information System) for the Edmonton Zone and REDIS for the Calgary Zone.
4. Health Link Alberta is a 24 hour a day, 7 day a week nurse telephone advice and health information service that provides the public with advice and information about health symptoms and concerns. The original data source for the daily calls to Health Link Alberta for ILI, cough, and breathing difficulties is the Health Link database called Sharp Focus.

## SURVEILLANCE AND HEALTH STATUS ASSESSMENT

### Public Health Surveillance

Report Date: December 7, 2010

An influenza report targeted to the general public is available at: <http://www.health.alberta.ca/health-info/influenza-evidence.html>

## OUTBREAKS

[Back to first page](#)

Upon notification of an outbreak, the *Alberta Health & Wellness/Alberta Health Services* Outbreak Reporting Form (Fillable PDF) is completed by Zone Public Health investigators and sent to *Alberta Health & Wellness and AHS Public Health Surveillance*. The form includes information about the type and location of the outbreak, type of facility, and the causative organism (confirmed or suspected). There may be a delay between the reporting of an outbreak and the identification of the organism. This report includes only those outbreaks that are laboratory confirmed and caused by influenza-like illness viruses; outbreaks that are caused by bacteria (i.e. pertussis, invasive pneumococcal disease) and other types of viruses (i.e. measles, rubella (German measles), chickenpox) are excluded. Also excluded are those outbreaks that have no causative agent identified by the Provincial Laboratory for Public Health or where specimens are not tested or an outbreak with only one infected (confirmed or probable) case during a 7 day period. This follows the same approach of PHAC FluWatch for defining ILI/influenza outbreak. The naming convention of outbreak facilities by FluWatch - "Hospital and residential institutions" - is also adopted. Outbreaks in schools are officially counted in tables or graphs whether there is or not a laboratory confirmation; outbreaks in hospital and residential institutions that are pending for laboratory confirmation are described for information only but not officially presented in graphs or tables in this report.

## INFLUENZA IMMUNIZATIONS

Influenza immunization data are reported by AHS zones. Numbers are available to the Public Health Surveillance team at the beginning of the week for the doses administered the previous week (Sunday to Saturday). It includes those doses administered by AHS (Public Health) only. Clients can only exist in one priority group. Immunization coverage rates will be reported at the end of March, 2011.

## POPULATION NUMBERS

Population data values used to calculate rates are for June 30, 2009 and are estimated using actual population values from the Alberta Health Care Insurance Plan (AHCIP) Registration File as of March 31, 2009. The following registrants are included: residents of Alberta; 'residents' of Alberta temporarily living elsewhere, such as extended visits or vacations or students attending an educational institute outside of Alberta, or Albertans temporarily (up to four years) working outside Alberta; persons during the first three months after they move from Alberta to another Canadian province; dependants of members of the RCMP and Armed Forces; persons from another country who are working or studying in Alberta on valid visas; and Natives/Aboriginals whose premiums are paid by Health Canada, First Nations and Inuit Health Branch. Not included are: members of the Armed Forces and RCMP; inmates at federal penitentiaries; persons from other provinces during their first three months in Alberta; and persons who have not registered for eligibility, or have opted out.

Slight differences between values provided at this level of aggregation and data provided at other levels of aggregation may occur because of round-off error. Population values are subject to change without notice when new source data is received.

## SURVEILLANCE AND HEALTH STATUS ASSESSMENT

### Public Health Surveillance

Report Date: December 7, 2010

An influenza report targeted to the general public is available at: <http://www.health.alberta.ca/health-info/influenza-evidence.html>