

## Weekly Report

December 14, 2010

The purpose of this report is to inform Public Health staff, primary care providers, acute care staff and other community practitioners about recent respiratory virus activity in the province of Alberta. Unless otherwise noted, all data presented are current as of the Saturday prior to the day the report is released.

### What's New?

- Global influenza activity remains low, except in areas of South Asia and central and western Africa which have seen recent increases in H1N1 (2009) activity. Seasonal influenza A (H3N2), influenza B and H1N1 (2009) are co-circulating around the world, with the latter two being predominant.
- Respiratory virus activity remains low overall throughout the US, although some States are reporting recent increases in influenza-like-illness (ILI).
- Overall influenza activity in Canada increased in Week 48 (Nov 28-Dec 4) in some areas of the Prairies, Ontario and Quebec. Of particular note, the total number of laboratory confirmed cases of influenza A in Manitoba this season is now 64. Pediatric and adult hospitalizations with influenza have also increased in Ontario and Quebec. The strains identified in Canada this season have been influenza A/H3N2 and to a much lesser extent influenza B and influenza A (H1N1) 2009. All specimens antigenically characterized so far match the components for the 2010-11 influenza vaccine. All influenza isolates tested for antiviral resistance in Canada this season were resistant to Amantadine, and sensitive to Oseltamivir and Zanamivir.
- In Alberta, the number of laboratory confirmed RSV cases continues to increase and the number of influenza infections has risen as well. Last week, ten new cases of influenza A were confirmed, five from Calgary Zone, one from Central Zone, and four from Edmonton Zone. The cases from Edmonton Zone are the first to be laboratory confirmed in this zone this season. Among them is the first confirmed case of influenza A (H1N1) 2009 in the province this season. These new cases bring the total number of laboratory confirmed influenza cases in the province to 29 (seven in South Zone, sixteen in Calgary Zone, two in Central Zone and four in Edmonton Zone); 28 cases of influenza A and one case of influenza B.
- Although there were no laboratory confirmed respiratory outbreaks reported in Alberta last week, two outbreaks are currently pending laboratory confirmation. One in Calgary Zone had respiratory symptom onset dates starting Dec 2 and the other in Edmonton Zone had onset dates starting Dec 7.
- Please note that there will be reduced reporting over the Christmas season. The last Alberta Respiratory Virus Surveillance Update of 2010 will be released on December 21<sup>st</sup>. The first report of 2011 will be released on Wednesday, January 5<sup>th</sup>.

If you have questions about the Alberta Respiratory Virus Surveillance Update, or any of the indicators, please contact:  
[AHSPublicHealthSurveillance@albertahealthservices.ca](mailto:AHSPublicHealthSurveillance@albertahealthservices.ca) Or phone: 780-342-0210

### Quick Links

[Alberta Snapshot](#)

[Section 1: Alberta](#)

[Section 2: Zone 1 - South](#)

[Section 3: Zone 2 - Calgary](#)

[Section 4: Zone 3 - Central](#)

[Section 5: Zone 4 - Edmonton](#)

[Section 6: Zone 5 - North](#)

[Annex: Data Notes](#)

#### Current Global Information

[FluWatch \(PHAC\)](#)

[FluView \(US CDC\)](#)

[HPA \(UK\)](#)

[WHO](#)

[Travel Advisories](#)

## Alberta Snapshot

[Back to first page](#)

Indicators		Cumulative Counts Week 35 (starting Aug 29/10) to week 49 (starting Dec 5/10)					Alberta	
		South	Calgary	Central	Edmonton	North		
Laboratory Confirmed Cases	Number of cases with a positive respiratory specimen <sup>1</sup>	Adenovirus	3	16	5	22	7	53
		Coronavirus	0	13	3	31	11	58
		Human metapneumovirus (hMPV)	4	1	0	1	0	6
		Influenza A	7	16	1	4	0	28
		Influenza B	0	0	1	0	0	1
		Parainfluenza	9	16	18	59	30	132
		Respiratory syncytial virus (RSV)	4	46	3	37	10	100
		Rhino enterovirus	62	303	120	430	186	1101
		Mixed	2	34	7	32	26	101
		Total	91	445	158	616	270	1580
Outbreaks	# laboratory confirmed respiratory outbreaks <sup>2</sup>	0	5	1	6	1	13	
Influenza Immunizations	Total number of clients who have received 1 dose administered by AHS Public Health <sup>3</sup> (cumulative since Oct 3, 2010)	41,526	169,891	56,660	152,535	58,066	478,678	

-- Information not available

<sup>1</sup> Sources: DIAL – Provincial Laboratory and the Outbreak Response Toolkit (includes cases with positive respiratory specimens received on or before Dec 11, 2010).

<sup>2</sup> Source: Alberta Health and Wellness Outbreak Reporting Form (Fillable PDF) from All Zones

<sup>3</sup>Source: AHS Zones (number does not include doses provided by external providers); includes first doses only for those that require two doses

For more information on data definitions and sources see [Annex: Data Notes section at the end of this report](#)

## SURVEILLANCE AND HEALTH STATUS ASSESSMENT

### Public Health Surveillance

Report Date: December 14, 2010

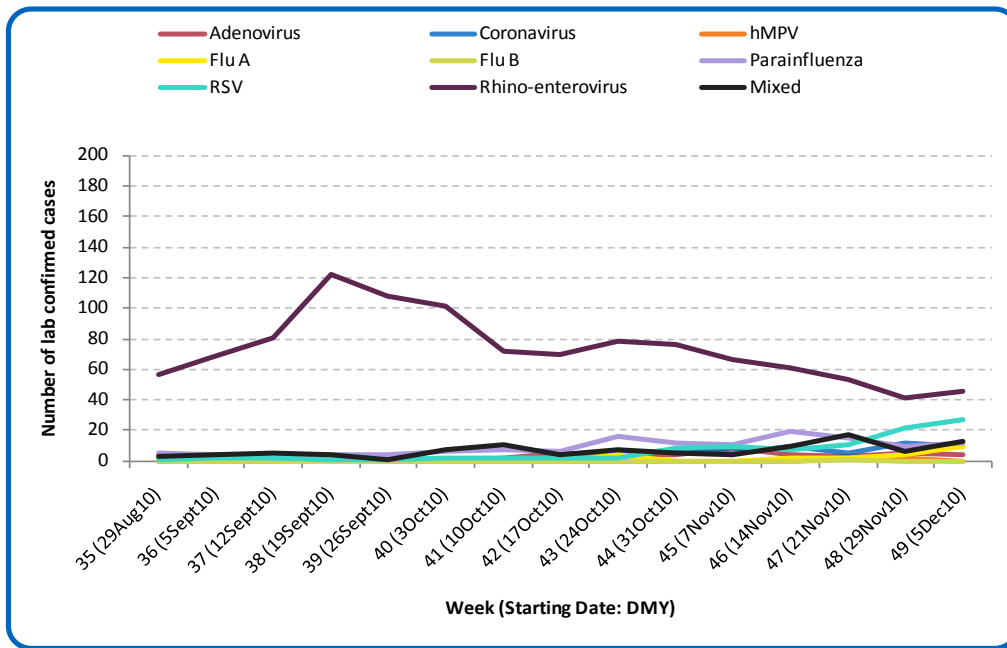
An influenza report targeted to the general public is available at: <http://www.health.alberta.ca/health-info/influenza-evidence.html>

## SECTION 1: ALBERTA

[Back to first page](#)

The predominant respiratory virus circulating in Alberta is still rhino-enterovirus. The number of RSV cases continues to increase. Ten new cases of influenza were confirmed in the province last week, including the first case of influenza A (H1N1) 2009 which was in an adult in Edmonton Zone. The remainder of new cases confirmed include three influenza A (H3) cases in Edmonton Zone, five influenza A (H3) cases in Calgary Zone and one influenza A with unresolved typing in Central Zone. This season, there have been a total of 29 confirmed cases of influenza in Alberta (24 type A H3 sub-type, one type A (H1N1) 2009, three type A with unresolved sub-typing, and one type B). In total, seven cases have been confirmed in children under the age of 9 years of age (including two infants), 17 cases (including the influenza B and influenza A (H1N1) 2009 cases) have been confirmed in adults aged 18 to less than 65 years, and five cases have been confirmed in adults aged 65 years and over.

Figure 1A: Laboratory confirmed respiratory virus cases, by virus type, by week, Alberta (2010)



Sources: DIAL – Provincial Laboratory and the Outbreak Response Toolkit (includes cases with positive respiratory specimens received on or before Dec 11, 2010). For more information on data definitions and sources see [Annex: Data Notes section at the end of this report](#)

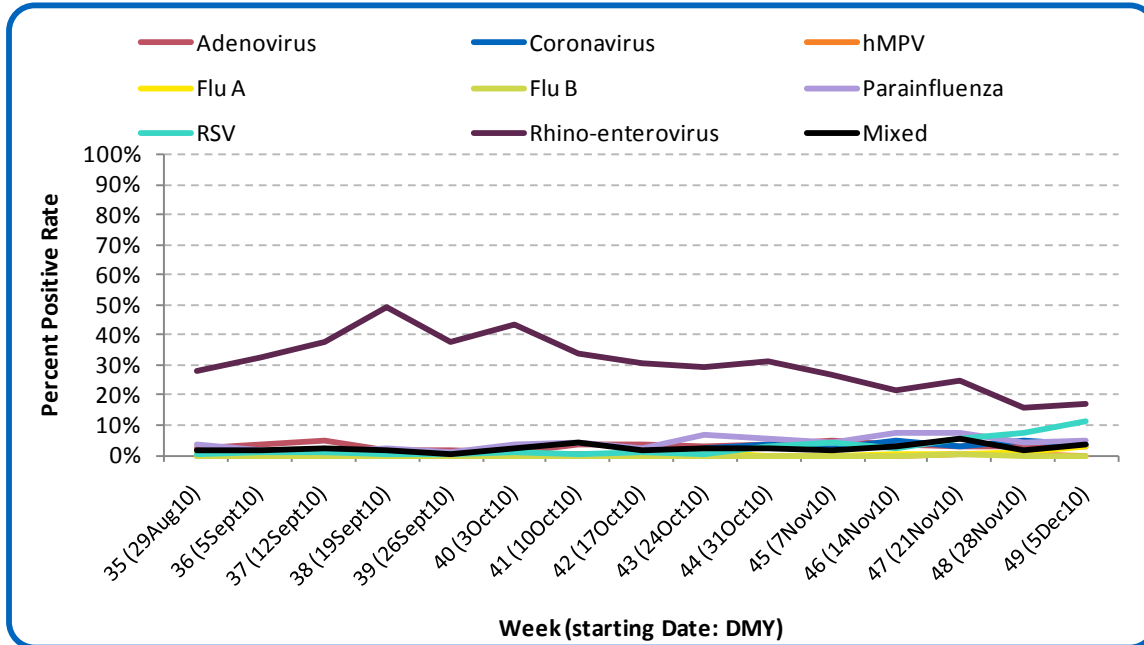
### SURVEILLANCE AND HEALTH STATUS ASSESSMENT

Public Health Surveillance  
Report Date: December 14, 2010

An influenza report targeted to the general public is available at: <http://www.health.alberta.ca/health-info/influenza-evidence.html>

Figure 1B: Respiratory Specimen Percent Positive Rates, by virus type, by week, Alberta (2010)

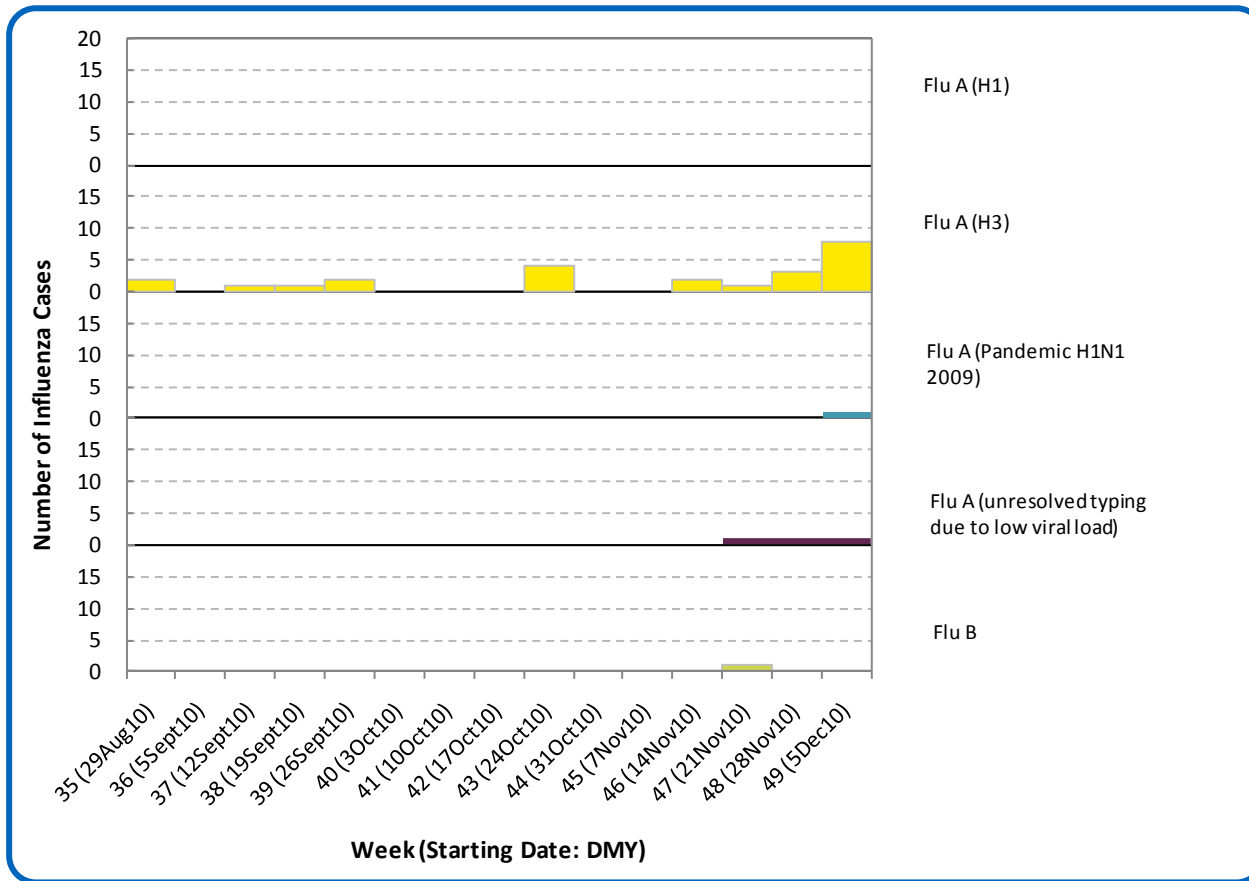
[Back to first page](#)



Source: DIAL – Provincial Laboratory (includes cases with positive respiratory specimens received on or before Dec 11, 2010)  
 For more information on data definitions and sources see [Annex: Data Notes section at the end of this report](#)

Figure 1C: Laboratory confirmed Influenza cases, by subtype, by week specimen received, Alberta (2010)

[Back to first page](#)



Source: Outbreak Response Toolkit (includes cases with positive respiratory specimens received on or before Dec 11, 2010). For more information on data definitions and sources see [Annex: Data Notes section at the end of this report](#)

SURVEILLANCE AND HEALTH STATUS ASSESSMENT

Public Health Surveillance

Report Date: December 14, 2010

An influenza report targeted to the general public is available at: <http://www.health.alberta.ca/health-info/influenza-evidence.html>

[Back to first page](#)

**Table 1A: New Influenza cases (and age specific rates), by subtype, by age group, Alberta (Week 49: Dec 5-11, 2010)**

	Flu A (Seasonal-H1)		Flu A (Seasonal-H3)		Flu A (Pandemic H1N1 2009)		Flu A (unresolved typing due to low viral load)		Flu B		Total	
	#	Rate (per 10,000)	#	Rate (per 10,000)	#	Rate (per 10,000)	#	Rate (per 10,000)	#	Rate (per 10,000)	#	Rate (per 10,000)
0 to <2 years	0	0.0	1	0.1	0	0.0	0	0.0	0	0.0	1	0.1
2 to <5 years	0	0.0	0	0.0	0	0.0	0	0.0	0	0.0	0	0.0
5 to <9 years	0	0.0	1	0.1	0	0.0	0	0.0	0	0.0	1	0.1
9 to <18 years	0	0.0	0	0.0	0	0.0	0	0.0	0	0.0	0	0.0
18 to <65 years	0	0.0	4	<0.1	1	<0.1	1	<0.1	0	0.0	6	<0.1
65 to <75 years	0	0.0	0	0.0	0	0.0	0	0.0	0	0.0	0	0.0
75+ years	0	0.0	2	0.1	0	0.0	0	0.0	0	0.0	2	0.1
<b>Total</b>	<b>0</b>	<b>0.0</b>	<b>8</b>	<b>&lt;0.1</b>	<b>1</b>	<b>&lt;0.1</b>	<b>1</b>	<b>&lt;0.1</b>	<b>0</b>	<b>0.0</b>	<b>10</b>	<b>&lt;0.1</b>

**Table 1B: Cumulative Influenza cases (and age specific rates), by subtype, by age group, Alberta (Aug 29 – Dec 11, 2010)**

	Flu A (Seasonal-H1)		Flu A (Seasonal-H3)		Flu A (Pandemic H1N1 2009)		Flu A (unresolved typing due to low viral load)		Flu B		Total	
	#	Rate (per 10,000)	#	Rate (per 10,000)	#	Rate (per 10,000)	#	Rate (per 10,000)	#	Rate (per 10,000)	#	Rate (per 10,000)
0 to <2 years	0	0.0	2	0.2	0	0.0	0	0.0	0	0.0	2	0.2
2 to <5 years	0	0.0	2	0.1	0	0.0	1	0.1	0	0.0	3	0.2
5 to <9 years	0	0.0	2	0.1	0	0.0	0	0.0	0	0.0	2	0.1
9 to <18 years	0	0.0	0	0.0	0	0.0	0	0.0	0	0.0	0	0.0
18 to <65 years	0	0.0	13	0.1	1	<0.1	2	<0.1	1	<0.1	17	0.1
65 to <75 years	0	0.0	1	<0.1	0	0.0	0	0.0	0	0.0	1	<0.1
75+ years	0	0.0	4	0.2	0	0.0	0	0.0	0	0.0	4	0.2
<b>Total</b>	<b>0</b>	<b>0.0</b>	<b>24</b>	<b>0.1</b>	<b>1</b>	<b>&lt;0.1</b>	<b>3</b>	<b>&lt;0.1</b>	<b>1</b>	<b>&lt;0.1</b>	<b>29</b>	<b>0.1</b>

Source for Table 1A & 1B: Outbreak Response Toolkit (includes cases with positive respiratory specimens received on or before Dec 11, 2010).

Population data values used to calculate rates are for June 30, 2009 and are estimated using actual population values from the Alberta Health Care Insurance Plan (AHCIP) Registration File as of March 31, 2009.

For more information on data definitions and sources see [Annex: Data Notes section at the end of this report](#)

## SURVEILLANCE AND HEALTH STATUS ASSESSMENT

### Public Health Surveillance

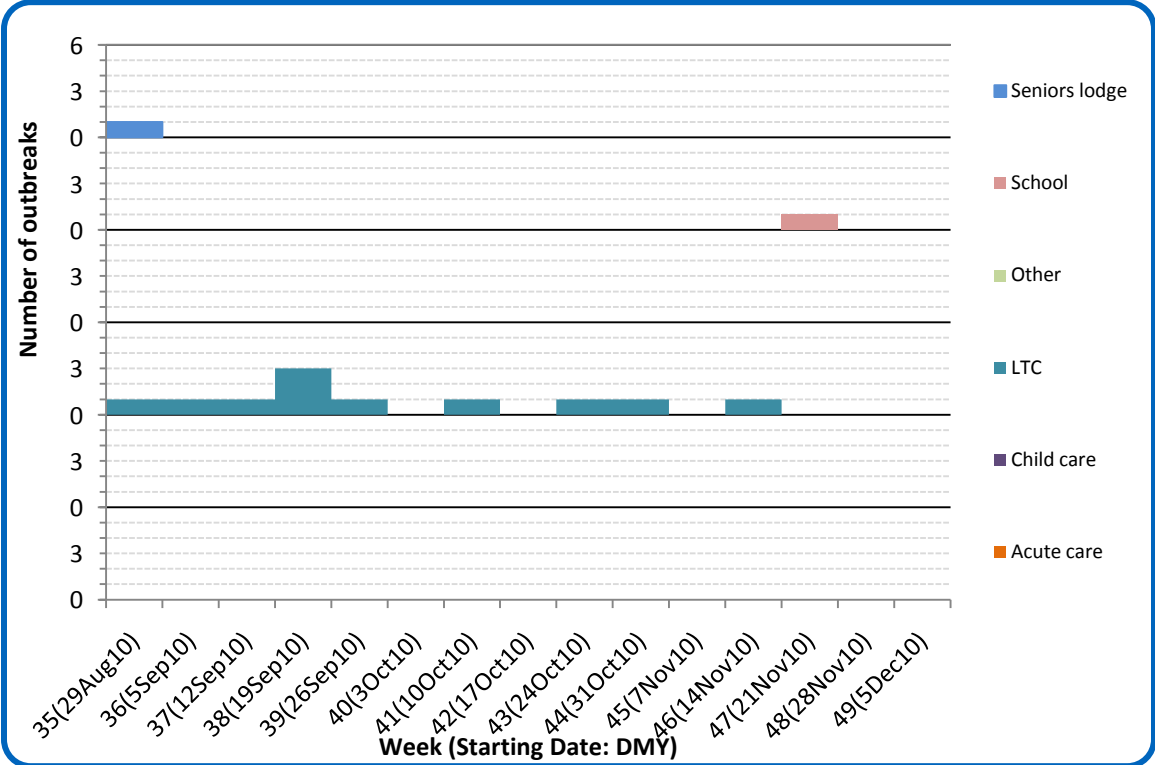
Report Date: December 14, 2010

An influenza report targeted to the general public is available at: <http://www.health.alberta.ca/health-info/influenza-evidence.html>

[Back to first page](#)

There have been no laboratory confirmed respiratory outbreaks in Alberta since Week 46 (Nov 14-20). One school outbreak occurred in Week 47 (Nov 21-28). There are, however, two respiratory outbreaks still pending laboratory confirmation. One is in Calgary Zone with an onset date of Dec 2 and the other is in Edmonton Zone with an onset date of Dec 7.

Figure 1D: Respiratory outbreaks, by facility type, by onset week, Alberta (2010; school outbreaks may not have a laboratory confirmation)



Source: Alberta Outbreak Reporting Form as of 23:59 on December 11, 2010  
 For more information on data definitions and sources see [Annex: Data Notes section at the end of this report](#)

**SURVEILLANCE AND HEALTH STATUS ASSESSMENT**

Public Health Surveillance  
 Report Date: December 14, 2010

An influenza report targeted to the general public is available at: <http://www.health.alberta.ca/health-info/influenza-evidence.html>

[Back to first page](#)

### Attack rates in respiratory outbreaks

No laboratory confirmed respiratory outbreaks occurred in Alberta in Week 49 (Dec 5 - 11). The outbreaks pending for laboratory confirmation in Calgary and Edmonton Zones have preliminary attack rates of 11% and 5%, respectively.

### Influenza-like illness visits and “Left Without Being Seen”

The combined number of visits to emergency departments/urgent care centers for influenza-like illness (ILI) from the City of Calgary and Edmonton Zone were 17% higher in Week 49 (Dec 5 - 11) than in Week 48, reaching the highest level it has been this season. The number of hospital admissions, however, decreased by 32% and the number of visits of patients who left the EDs without being seen for ILI increased by 38% in Week 49 compared to Week 48. For people with cough symptoms during that same time period, visits to ED’s were 31% higher; hospital admissions were 22% higher; and the number of patients who left the EDs without being seen was 56% higher in Week 49 compared to the previous week.

### Respiratory related calls to Health Link Alberta

The number of calls to Health Link Alberta for cough or breathing difficulties in Week 49 (Dec 5 -11) was comparable to that in Week 48. In general, this indicator has shown an upward trend since late August.

### Percentage of visits to sentinel offices with influenza-like illness (ILI)

In Week 48 (Nov 28 - Dec 4), the province-wide percentage of ILI-related visits to sentinel physician offices was 50% lower than in Week 47.

### Percentage of visits to sentinel offices with lower respiratory tract infection (LRTI)

The province-wide percentage of LRTI-related visits to sentinel physician offices in Week 48 (Nov 28-Dec 4) was marginally higher than in Week 47, reaching the highest level it has been this season.

The combined percentage of ILI- and LRTI-related visits was 10% lower due to the decreased ILI-related visits in Week 48 than in Week 47.

## SURVEILLANCE AND HEALTH STATUS ASSESSMENT

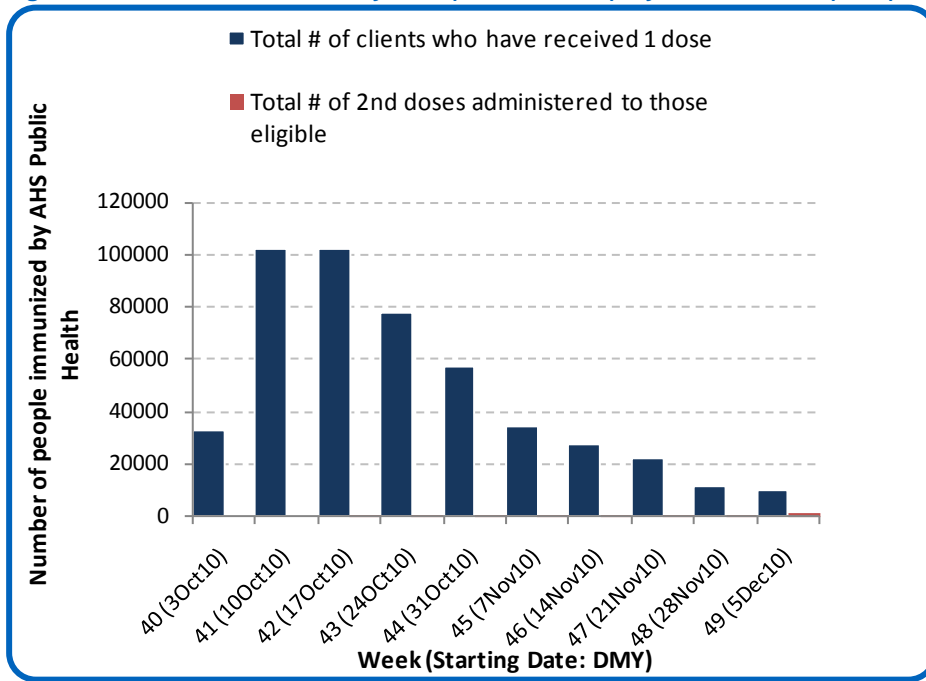
### Public Health Surveillance

Report Date: December 14, 2010

An influenza report targeted to the general public is available at: <http://www.health.alberta.ca/health-info/influenza-evidence.html>

[Back to first page](#)

Figure 1E: Number Immunized by AHS (Public Health), by week, Alberta (2010)



Source: AHS Zones (doses do not include those delivered by external providers);  
 Note: Immunization coverage rates will be reported at the end of the influenza season  
 For more information on data definitions and sources see [Annex: Data Notes section at the end of this report](#)

**SURVEILLANCE AND HEALTH STATUS ASSESSMENT**

**Public Health Surveillance**

Report Date: December 14, 2010

An influenza report targeted to the general public is available at: <http://www.health.alberta.ca/health-info/influenza-evidence.html>

[Back to first page](#)

**Table 1C: AHS (Public Health) Delivered Influenza Immunizations (with Cumulative totals), by priority group, Alberta (2010)**

Priority Group	Number Immunized (Week 49 – Dec5-11, 2010)	Cumulative Number Immunized (since Oct 3, 2010)
Long term care staff	67	2,476
Health care workers	449	18,087
Pregnant women	175	4,008
Residents of long term care	7	4,685
65 years of age and over	1,185	143,029
All children 6 months up to and including 23 months*	Dose #1	1,158
	Dose #2	811
All children 24 months up to and including 59 months*	Dose #1	794
	Dose #2	164
High risk: 5 years up to and including 8 years*	Dose #1	139
	Dose #2	16
High risk: 9 years up to and including 64 years	992	52,584
Healthy: 5 years up to and including 8 years*	Dose #1	487
	Dose #2	73
Healthy: 9 years up to and including 64 years	4,511	192,786
<b>Total number of clients who have received 1 dose</b>	<b>9,964</b>	<b>478,678</b>
<b>Total number of 2nd doses administered to those eligible*</b>	<b>1,064</b>	<b>4,116</b>

Source: AHS Zones (doses do not include those delivered by external providers)

\*Children under 9 years of age who have not received at least one dose of seasonal influenza vaccine in past years require two doses, given at least four weeks apart.

Note: Immunization coverage rates will be reported at the end of the influenza season

For more information on data definitions and sources see [Annex: Data Notes section at the end of this report](#)

## SURVEILLANCE AND HEALTH STATUS ASSESSMENT

### Public Health Surveillance

Report Date: December 14, 2010

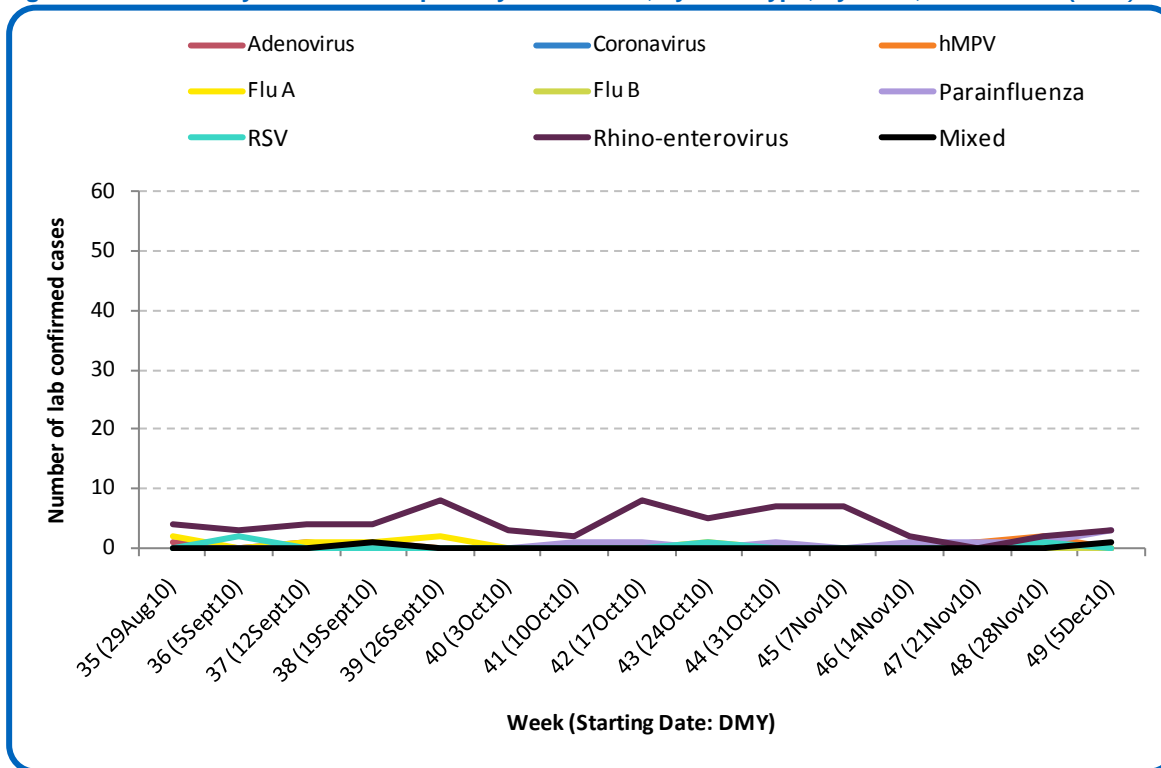
An influenza report targeted to the general public is available at: <http://www.health.alberta.ca/health-info/influenza-evidence.html>

SECTION 2: ZONE 1 - SOUTH

[Back to first page](#)

Generally, respiratory virus activity is low in the South Zone. No new influenza cases were confirmed in the South Zone last week. In total, there have been seven confirmed cases of influenza A (H3) in the South Zone since late August. Five cases have been in adults aged 18 to less than 65 years and two cases have been in children under the age of 5 years.

Figure 2A: Laboratory confirmed respiratory virus cases, by virus type, by week, South Zone (2010)



Sources: DIAL – Provincial Laboratory and the Outbreak Response Toolkit (includes cases with positive respiratory specimens received on or before Dec 11, 2010). For more information on data definitions and sources see [Annex: Data Notes section at the end of this report](#)

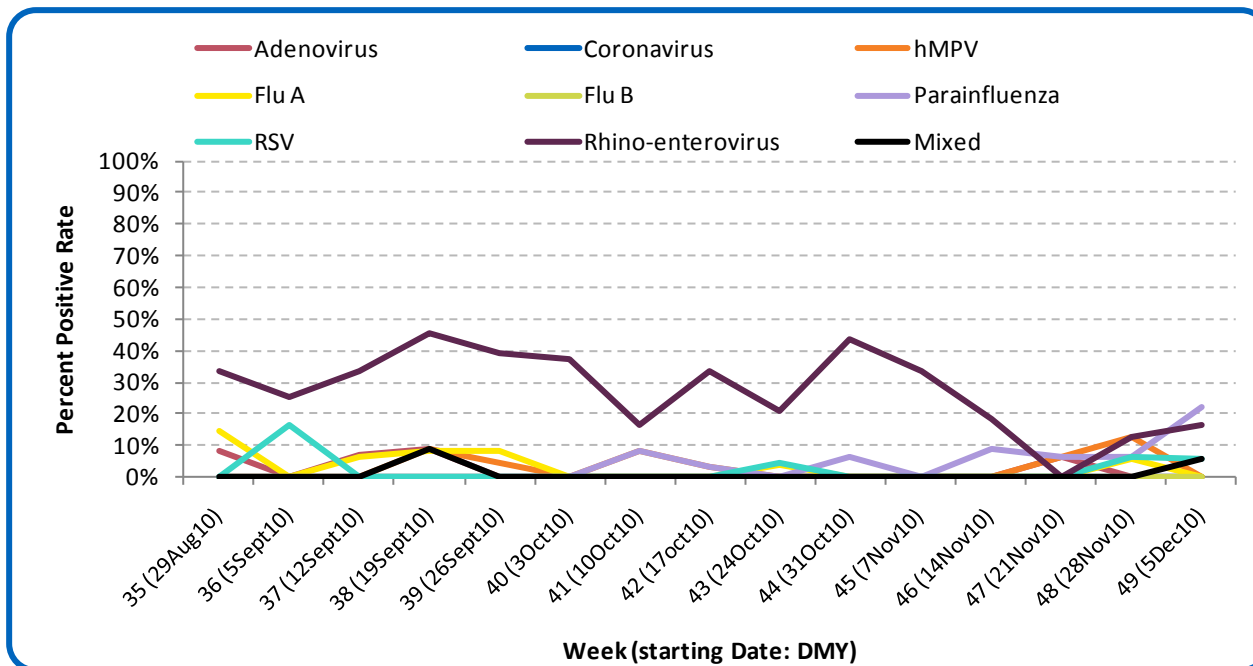
SURVEILLANCE AND HEALTH STATUS ASSESSMENT

Public Health Surveillance  
Report Date: December 14, 2010

An influenza report targeted to the general public is available at: <http://www.health.alberta.ca/health-info/influenza-evidence.html>

[Back to first page](#)

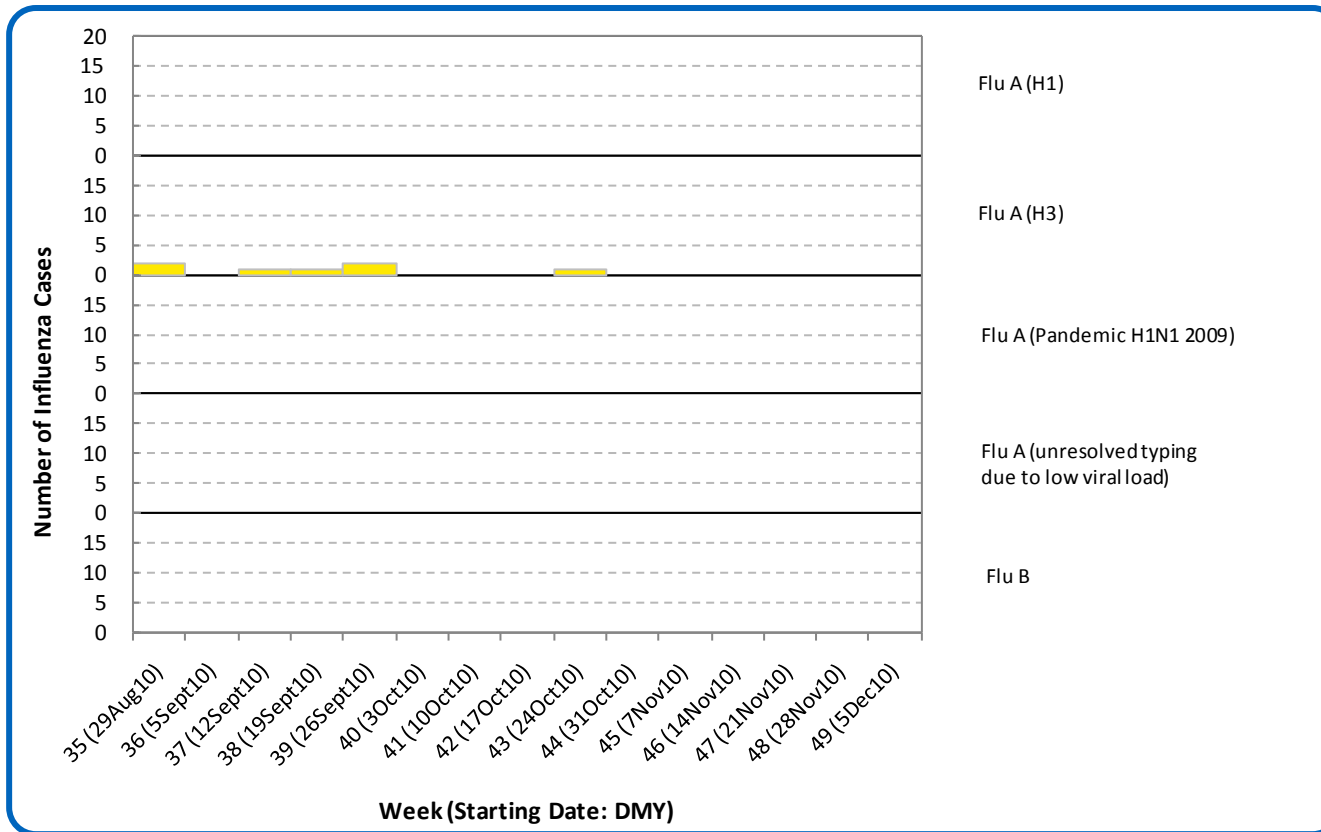
Figure 2B: Respiratory Specimen Percent Positive Rates, by virus type, by week, South Zone (2010)



Source: DIAL – Provincial Laboratory (includes cases with positive respiratory specimens received on or before Dec 11, 2010)  
For more information on data definitions and sources see [Annex: Data Notes section at the end of this report](#)

[Back to first page](#)

Figure 2C: Laboratory confirmed Influenza cases, by subtype, by week specimen received, South Zone (2010)



Source: Outbreak Response Toolkit (includes cases with positive respiratory specimens received on or before Dec 11, 2010). For more information on data definitions and sources see [Annex: Data Notes section at the end of this report](#)

SURVEILLANCE AND HEALTH STATUS ASSESSMENT

Public Health Surveillance

Report Date: December 14, 2010

An influenza report targeted to the general public is available at: <http://www.health.alberta.ca/health-info/influenza-evidence.html>

[Back to first page](#)

**Table 2A: Cumulative Influenza cases (and age specific rates), by subtype, by age group, South Zone (Aug 29–Dec 11, 2010)**

	Flu A (Seasonal-H1)		Flu A (Seasonal-H3)		Flu A (Pandemic H1N1 2009)		Flu A (unresolved typing due to low viral load)			Flu B		Total
	#	Rate (per 10,000)	#	Rate (per 10,000)	#	Rate (per 10,000)	#	Rate (per 10,000)	#	Rate (per 10,000)	#	Rate (per 10,000)
0 to <2 years	0	0.0	0	0.0	0	0.0	0	0.0	0	0.0	0	0.0
2 to <5 years	0	0.0	2	1.7	0	0.0	0	0.0	0	0.0	2	1.7
5 to <9 years	0	0.0	0	0.0	0	0.0	0	0.0	0	0.0	0	0.0
9 to <18 years	0	0.0	0	0.0	0	0.0	0	0.0	0	0.0	0	0.0
18 to <65 years	0	0.0	5	0.3	0	0.0	0	0.0	0	0.0	5	0.3
65 to <75 years	0	0.0	0	0.0	0	0.0	0	0.0	0	0.0	0	0.0
75+ years	0	0.0	0	0.0	0	0.0	0	0.0	0	0.0	0	0.0
<b>Total</b>	<b>0</b>	<b>0.0</b>	<b>7</b>	<b>0.3</b>	<b>0</b>	<b>0.0</b>	<b>0</b>	<b>0.0</b>	<b>0</b>	<b>0.0</b>	<b>7</b>	<b>0.3</b>

Source for Table 2A & 2B: Outbreak Response Toolkit (includes cases with positive respiratory specimens received on or before Dec 11, 2010).

Population data values used to calculate rates are for June 30, 2009 and are estimated using actual population values from the Alberta Health Care Insurance Plan (AHCIP) Registration File as of March 31, 2009.

For more information on data definitions and sources see [Annex: Data Notes section at the end of this report](#)

[Back to first page](#)

#### **Attack rates in respiratory outbreaks**

There have been no respiratory outbreaks reported in the South Zone this season.

#### **Influenza-like illness visits and “Left Without Being Seen”**

This information is not available for the South Zone.

#### **Respiratory related calls to Health Link Alberta**

The number of calls to Health Link Alberta for cough or breathing difficulties by residents of the South Zone in Week 49 (Dec 4 - 11) was within the range established since Week 44.

#### **Percentage of visits to sentinel offices with Influenza-like illness (ILI)**

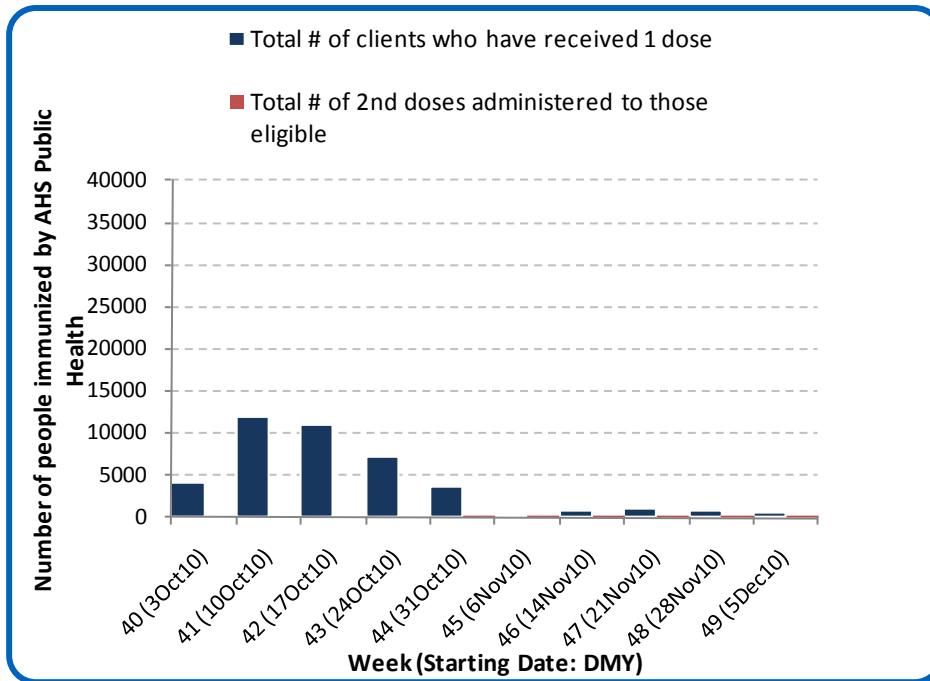
There were no reports of ILI-related visits to sentinel physician offices by residents of the South Zone in Week 48 (Nov 28-Dec 4).

#### **Percentage of visits to sentinel offices with lower respiratory tract infection (LRTI)**

There were no reports of LRTI-related visits to sentinel physician offices by residents of the South Zone in week 48 (Nov 28-Dec 4).

[Back to first page](#)

Figure 2D: Number Immunized by AHS (Public Health), by week, South Zone (2010)



Source: AHS Zones (doses do not include those delivered by external providers)  
 Note: Immunization coverage rates will be reported at the end of the influenza season  
 For more information on data definitions and sources see [Annex: Data Notes section at the end of this report](#)

**SURVEILLANCE AND HEALTH STATUS ASSESSMENT**

**Public Health Surveillance**  
 Report Date: December 14, 2010

An influenza report targeted to the general public is available at: <http://www.health.alberta.ca/health-info/influenza-evidence.html>

Table 2B: AHS (Public Health) Delivered Influenza Immunizations (with Cumulative totals), by priority group, South Zone (2010)

[Back to first page](#)

Priority Group	Number Immunized (Week 49 – Dec5-11, 2010)	Cumulative Number Immunized (since Oct 3, 2010)
Long term care staff	0	594
Health care workers	13	1,527
Pregnant women	8	273
Residents of long term care	1	720
65 years of age and over	76	15,462
All children 6 months up to and including 23 months*	Dose #1	84
	Dose #2	77
All children 24 months up to and including 59 months*	Dose #1	52
	Dose #2	17
High risk: 5 years up to and including 8 years*	Dose #1	9
	Dose #2	3
High risk: 9 years up to and including 64 years	40	4,006
Healthy: 5 years up to and including 8 years*	Dose #1	28
	Dose #2	4
Healthy: 9 years up to and including 64 years	224	14,117
<b>Total number of clients who have received 1 dose</b>	<b>535</b>	<b>41,526</b>
<b>Total number of 2nd doses administered to those eligible*</b>	<b>101</b>	<b>340</b>

Source: AHS Zones (doses do not include those delivered by external providers)

\*Children under 9 years of age who have not received at least one dose of seasonal influenza vaccine in past years require two doses, given at least four weeks apart.

Note: Immunization coverage rates will be reported at the end of the influenza season

For more information on data definitions and sources see [Annex: Data Notes section at the end of this report](#)

## SURVEILLANCE AND HEALTH STATUS ASSESSMENT

### Public Health Surveillance

Report Date: December 14, 2010

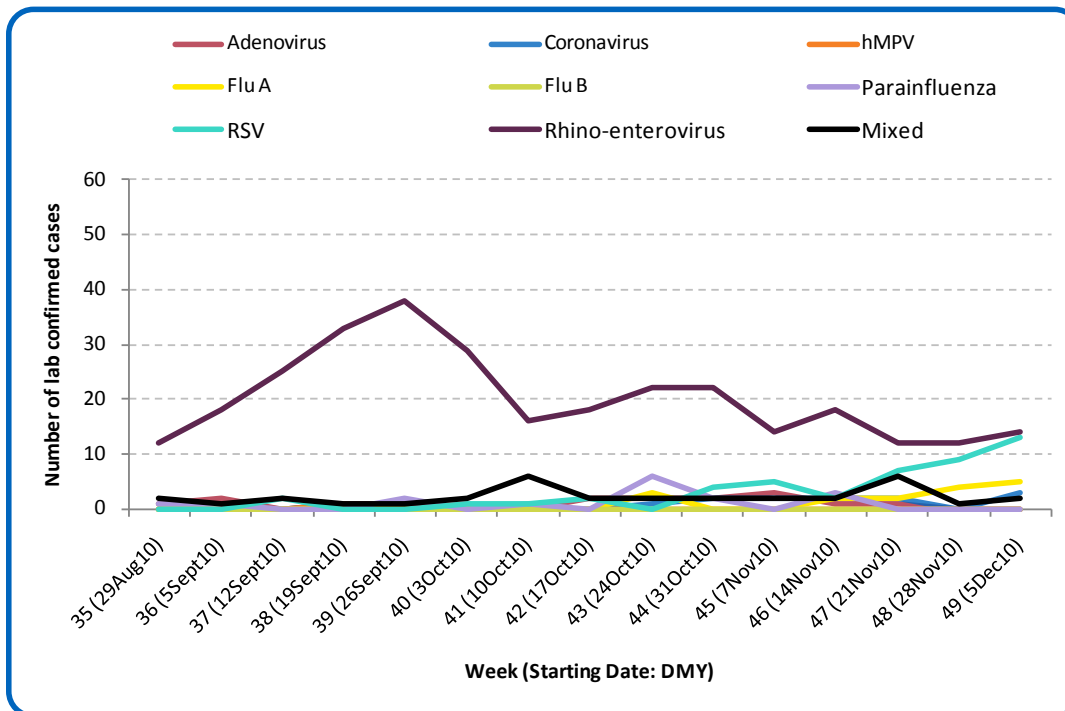
An influenza report targeted to the general public is available at: <http://www.health.alberta.ca/health-info/influenza-evidence.html>

**SECTION 3: ZONE 2 - CALGARY**

[Back to first page](#)

The number of RSV cases in the Calgary Zone continues to increase. Five new cases of influenza A (H3) were confirmed in the Calgary Zone last week; three cases occurred in adults aged 18 to less than 65 years of age and two cases occurred in adults 75 years and older. This season, a total of 16 cases of influenza A have been confirmed in the Calgary Zone.

**Figure 3A: Laboratory confirmed respiratory virus cases, by virus type, by week, Calgary Zone (2010)**



Sources: DIAL – Provincial Laboratory and the Outbreak Response Toolkit (includes cases with positive respiratory specimens received on or before Dec 11, 2010). For more information on data definitions and sources see [Annex: Data Notes section at the end of this report](#)

**SURVEILLANCE AND HEALTH STATUS ASSESSMENT**

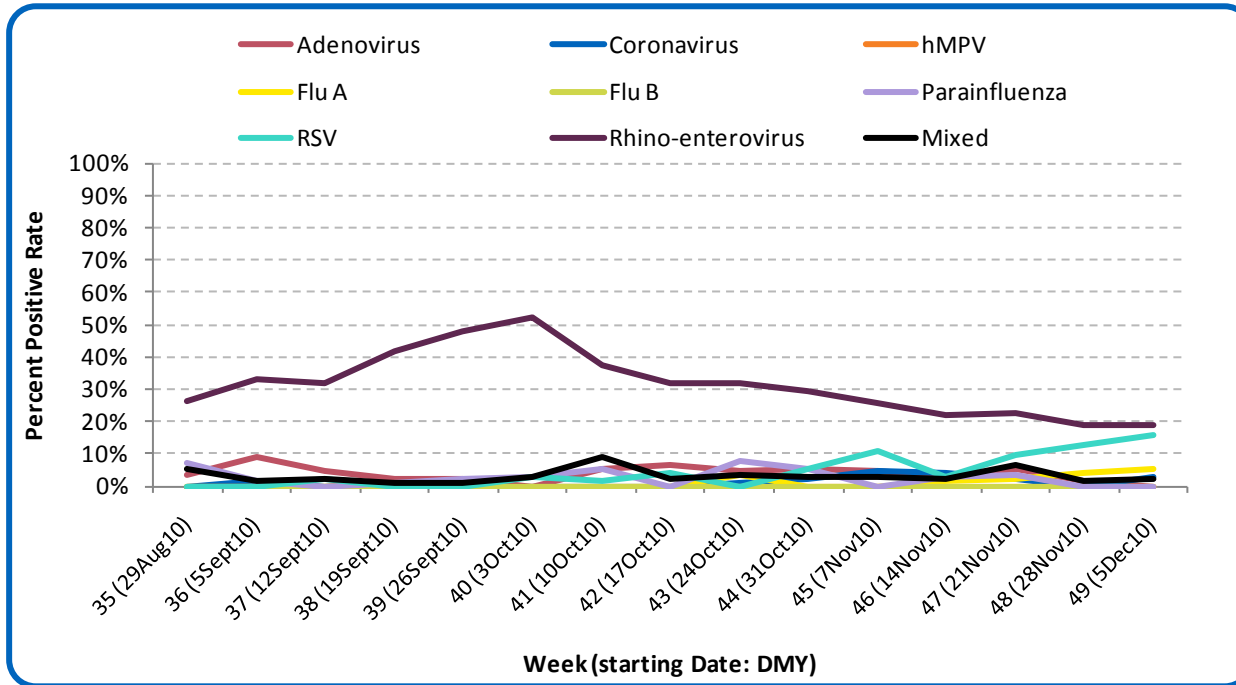
**Public Health Surveillance**

Report Date: December 14, 2010

An influenza report targeted to the general public is available at: <http://www.health.alberta.ca/health-info/influenza-evidence.html>

[Back to first page](#)

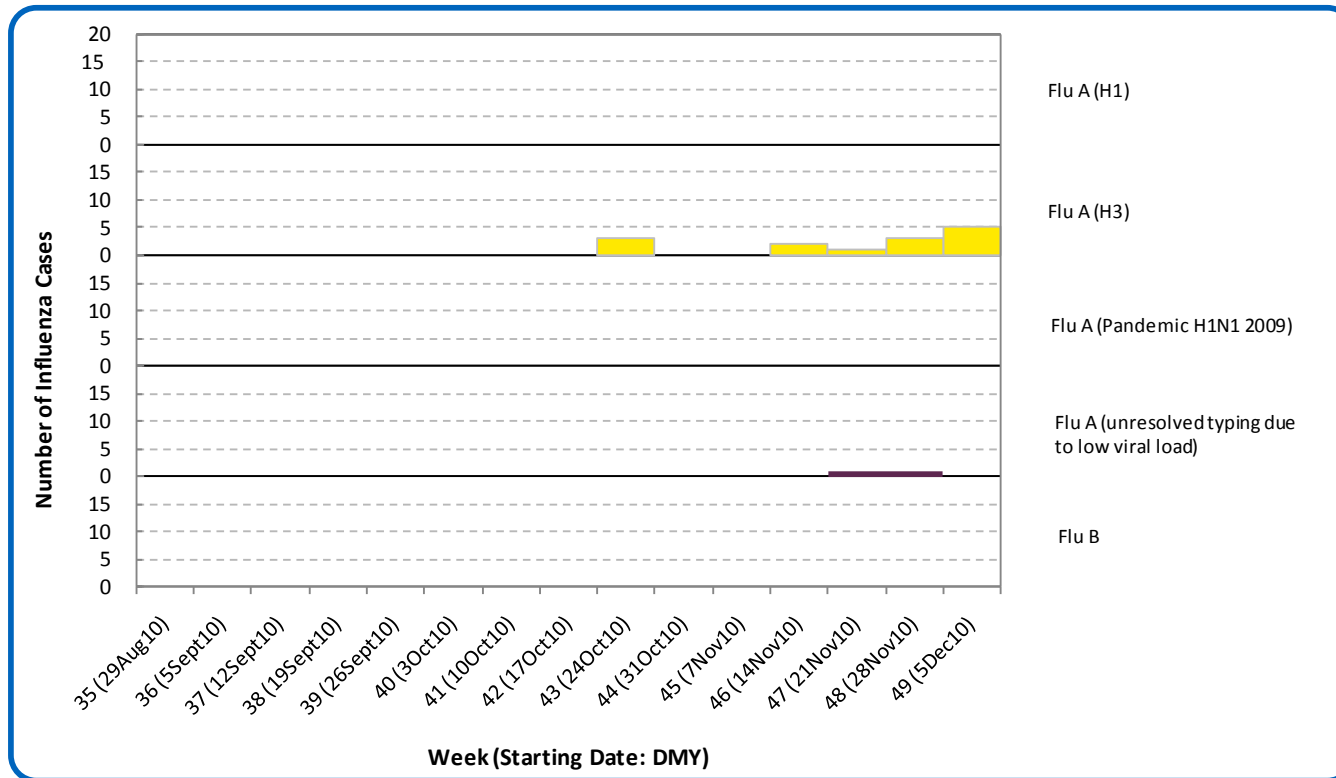
Figure 3B: Respiratory Specimen Percent Positive Rates, by virus type, by week, Calgary Zone (2010)



Source: DIAL – Provincial Laboratory (includes cases with positive respiratory specimens received on or before Dec 11, 2010)  
For more information on data definitions and sources see [Annex: Data Notes section at the end of this report](#)

[Back to first page](#)

Figure 3C: Laboratory confirmed Influenza cases, by subtype, by week specimen received, Calgary Zone (2010)



Source: Outbreak Response Toolkit (includes cases with positive respiratory specimens received on or before Dec 11, 2010). For more information on data definitions and sources see [Annex: Data Notes section at the end of this report](#)

[Back to first page](#)

**Table 3A: New Influenza cases (and age specific rates), by subtype, by age group, Calgary Zone (Week 49: Dec 5-11, 2010)**

	Flu A (Seasonal-H1)		Flu A (Seasonal-H3)		Flu A (Pandemic H1N1 2009)		Flu A (unresolved typing due to low viral load)		Flu B		Total	
	#	Rate (per 10,000)	#	Rate (per 10,000)	#	Rate (per 10,000)	#	Rate (per 10,000)	#	Rate (per 10,000)	#	Rate (per 10,000)
0 to <2 years	0	0.0	0	0.0	0	0.0	0	0.0	0	0.0	0	0.0
2 to <5 years	0	0.0	0	0.0	0	0.0	0	0.0	0	0.0	0	0.0
5 to <9 years	0	0.0	0	0.0	0	0.0	0	0.0	0	0.0	0	0.0
9 to <18 years	0	0.0	0	0.0	0	0.0	0	0.0	0	0.0	0	0.0
18 to <65 years	0	0.0	3	<0.1	0	0.0	0	0.0	0	0.0	3	<0.1
65 to <75 years	0	0.0	0	0.0	0	0.0	0	0.0	0	0.0	0	0.0
75+ years	0	0.0	2	0.3	0	0.0	0	0.0	0	0.0	2	0.3
<b>Total</b>	<b>0</b>	<b>0.0</b>	<b>5</b>	<b>&lt;0.1</b>	<b>0</b>	<b>0.0</b>	<b>0</b>	<b>0.0</b>	<b>0</b>	<b>0.0</b>	<b>5</b>	<b>&lt;0.1</b>

**Table 3B: Cumulative Influenza cases (and age specific rates), by subtype, by age group, Calgary Zone (Aug 29 – Dec 11, 2010)**

	Flu A (Seasonal-H1)		Flu A (Seasonal-H3)		Flu A (Pandemic H1N1 2009)		Flu A (unresolved typing due to low viral load)		Flu B		Total	
	#	Rate (per 10,000)	#	Rate (per 10,000)	#	Rate (per 10,000)	#	Rate (per 10,000)	#	Rate (per 10,000)	#	Rate (per 10,000)
0 to <2 years	0	0.0	1	0.3	0	0.0	0	0.0	0	0.0	1	0.3
2 to <5 years	0	0.0	0	0.0	0	0.0	1	0.2	0	0.0	1	0.2
5 to <9 years	0	0.0	1	0.2	0	0.0	0	0.0	0	0.0	1	0.2
9 to <18 years	0	0.0	0	0.0	0	0.0	0	0.0	0	0.0	0	0.0
18 to <65 years	0	0.0	7	0.1	0	0.0	1	<0.1	0	0.0	8	0.1
65 to <75 years	0	0.0	1	0.1	0	0.0	0	0.0	0	0.0	1	0.1
75+ years	0	0.0	4	0.7	0	0.0	0	0.0	0	0.0	4	0.7
<b>Total</b>	<b>0</b>	<b>0.0</b>	<b>14</b>	<b>0.1</b>	<b>0</b>	<b>0.0</b>	<b>2</b>	<b>&lt;0.1</b>	<b>0</b>	<b>0.0</b>	<b>16</b>	<b>0.1</b>

Source: Outbreak Response Toolkit (includes cases with positive respiratory specimens received on or before Dec 11, 2010).

Population data values used to calculate rates are for June 30, 2009 and are estimated using actual population values from the Alberta Health Care Insurance Plan (AHCIP) Registration File as of March 31, 2009.

For more information on data definitions and sources see [Annex: Data Notes section at the end of this report](#)

## SURVEILLANCE AND HEALTH STATUS ASSESSMENT

### Public Health Surveillance

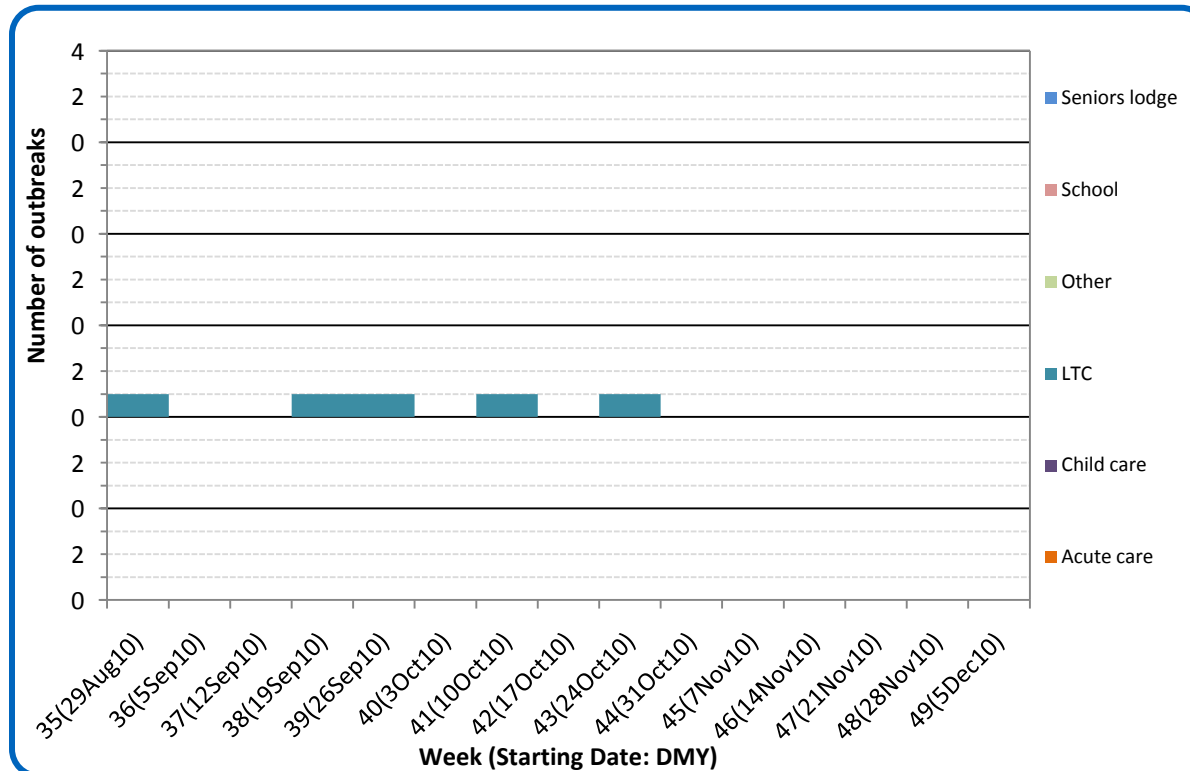
Report Date: December 14, 2010

An influenza report targeted to the general public is available at: <http://www.health.alberta.ca/health-info/influenza-evidence.html>

[Back to first page](#)

There have been no laboratory confirmed reports of respiratory outbreaks in Calgary Zone since Week 43 (Oct 24 - 30). One outbreak in a long term care facility with an onset date of Dec 2 is pending laboratory confirmation.

Figure 3D: Respiratory outbreaks, by facility type, by onset week, Calgary Zone (2010); school outbreaks may not have a laboratory confirmation)



Source: Alberta Outbreak Reporting Form as of 23:59 on December 11, 2010.  
For more information on data definitions and sources see [Annex: Data Notes section at the end of this report](#)

SURVEILLANCE AND HEALTH STATUS ASSESSMENT

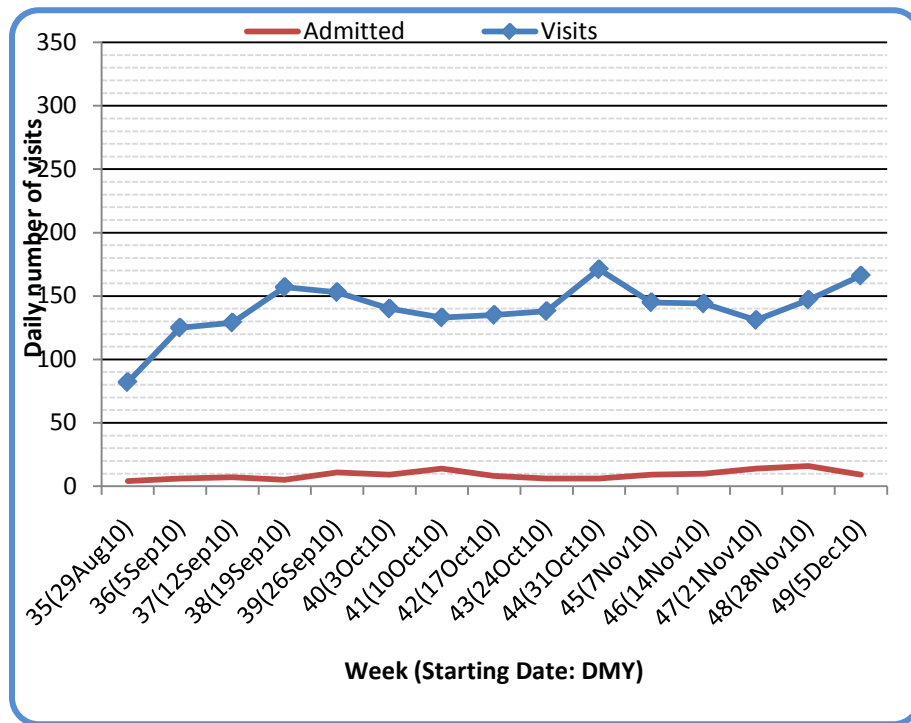
Public Health Surveillance  
Report Date: December 14, 2010

An influenza report targeted to the general public is available at: <http://www.health.alberta.ca/health-info/influenza-evidence.html>

[Back to first page](#)

The number of visits to emergency departments/urgent care centers for influenza-like illness (ILI) by residents of the City of Calgary increased by 13% in Week 49 (Dec 5-11) from the previous week. This increase was primarily due to the increase in visits by children younger than 5 years old. The number of hospital admissions of patients with cough symptoms, however, was 31% lower. The number of visits with cough symptoms that left EDs without being seen was 67% higher in Week 49 compared to the previous week.

**Figure 3E: Visits to urban emergency departments/urgent care centers in the City of Calgary with cough symptoms and admissions to hospitals, by visit week (2010)**



Source: Alberta Real Time Syndromic Surveillance Net (ARTSSN) as of 23:59 on December 11, 2010. For more information on data definitions and sources see [Annex: Data Notes section at the end of this report](#)

**SURVEILLANCE AND HEALTH STATUS ASSESSMENT**

**Public Health Surveillance**

Report Date: December 14, 2010

An influenza report targeted to the general public is available at: <http://www.health.alberta.ca/health-info/influenza-evidence.html>

[Back to first page](#)

### **Attack rates in respiratory outbreaks**

There have been no laboratory confirmed respiratory outbreaks in the Calgary Zone since Week 43 (Oct 24-30). The outbreak pending laboratory confirmation had a preliminary attack rate of 11%.

### **Influenza-like illness visits and “Left Without Being seen”**

The number of visits to urban emergency departments/ urgent care centers (EDs) for influenza-like illness (ILI) in the City of Calgary maintains its upward trend and is currently the highest it’s been this season. However, both the number of hospital admissions and the number of visits of patients with ILI who left EDs without being seen were lower in Week 49 than in Week 48.

### **Respiratory related calls to Health Link Alberta**

The number of calls to Health Link Alberta for cough or breathing difficulties by residents of the Calgary Zone maintains its increasing trend as well.

### **Percentage of visits to sentinel offices with influenza-like illness (ILI)**

The percentage of ILI-related visits to sentinel physician offices by residents of the Calgary Zone was 76% lower in Week 48 (Nov 28-Dec 4) than in Week 47.

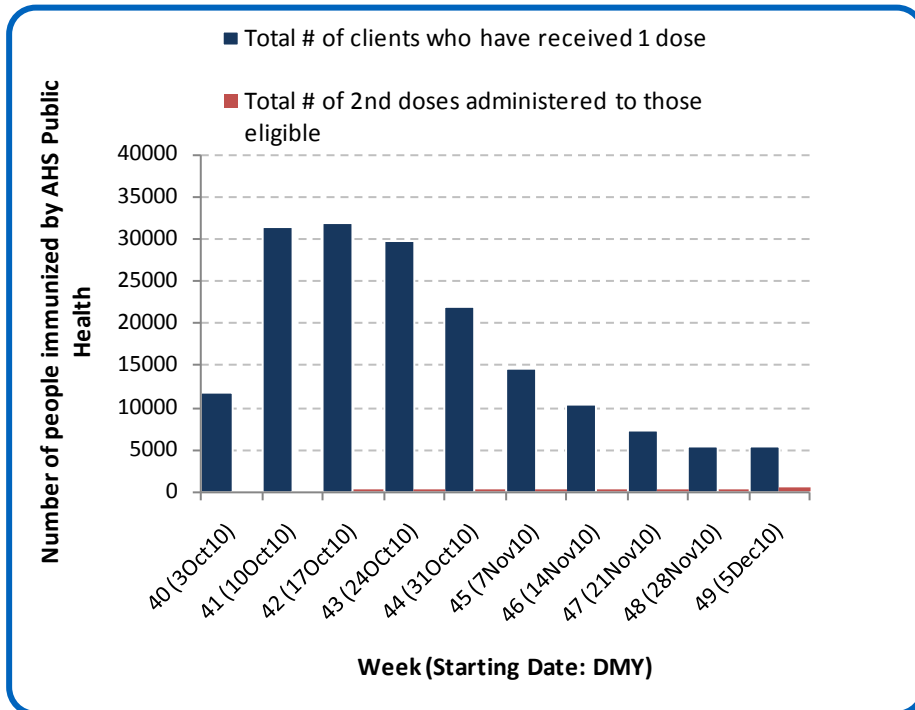
### **Percentage of visits to sentinel offices with lower respiratory tract infection (LRTI)**

The percentage of LRTI-related visits to sentinel physician offices by residents of the Calgary Zone was 14 times higher in Week 48 (Nov 28 –Dec 4) than in Week 47.

The combined percentage for ILI- and LRTI-related visits was 65% higher in Week 48 than in Week 47, but was still only half of that in Week 46.

[Back to first page](#)

Figure 3F: Number Immunized by AHS (Public Health), by week, Calgary Zone (2010)



Source: AHS Zones (doses do not include those delivered by external providers)  
 Note: Immunization coverage rates will be reported at the end of the influenza season  
 For more information on data definitions and sources see [Annex: Data Notes section at the end of this report](#)

**SURVEILLANCE AND HEALTH STATUS ASSESSMENT**

**Public Health Surveillance**

Report Date: December 14, 2010

An influenza report targeted to the general public is available at: <http://www.health.alberta.ca/health-info/influenza-evidence.html>

Table 3C: AHS (Public Health) Delivered Influenza Immunizations (with Cumulative totals), by priority group, Calgary Zone (2010)

[Back to first page](#)

Priority Group		Number Immunized (Week 49 – Dec5-11, 2010)	Cumulative Number Immunized (since Oct 3, 2010)
Long term care staff		4	436
Health care workers		91	5,062
Pregnant women		97	1,612
Residents of long term care		0	703
65 years of age and over		653	43,461
All children 6 months up to and including 23 months*	Dose #1	623	8,251
	Dose #2	359	1,258
All children 24 months up to and including 59 months*	Dose #1	479	9,185
	Dose #2	63	216
High risk: 5 years up to and including 8 years*	Dose #1	88	2,020
	Dose #2	4	14
High risk: 9 years up to and including 64 years		552	18,510
Healthy: 5 years up to and including 8 years*	Dose #1	278	6,207
	Dose #2	31	111
Healthy: 9 years up to and including 64 years		2,633	74,444
<b>Total number of clients who have received 1 dose</b>		<b>5,498</b>	<b>169,891</b>
<b>Total number of 2nd doses administered to those eligible*</b>		<b>457</b>	<b>1,599</b>

Source: AHS Zones (doses do not include those delivered by external providers)

\*Children under 9 years of age who have not received at least one dose of seasonal influenza vaccine in past years require two doses, given at least four weeks apart.

Note: Immunization coverage rates will be reported at the end of the influenza season

For more information on data definitions and sources see [Annex: Data Notes section at the end of this report](#)

## SURVEILLANCE AND HEALTH STATUS ASSESSMENT

### Public Health Surveillance

Report Date: December 14, 2010

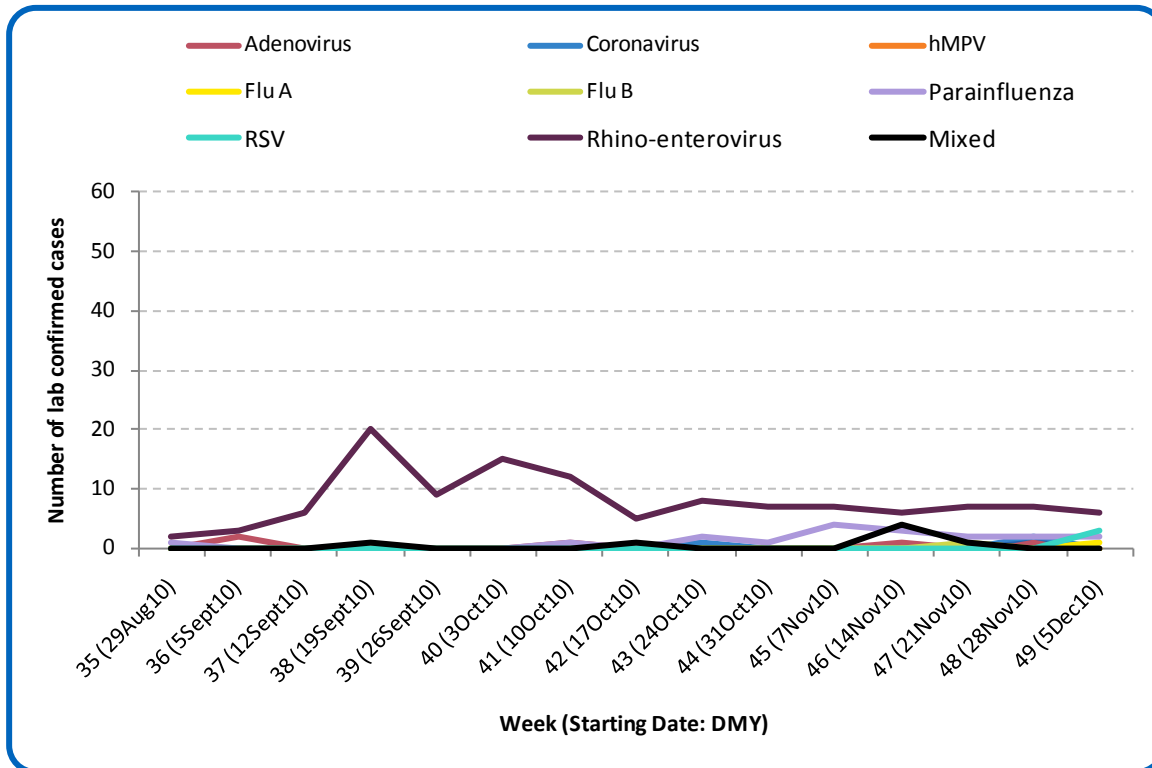
An influenza report targeted to the general public is available at: <http://www.health.alberta.ca/health-info/influenza-evidence.html>

**SECTION 4: ZONE 3 - CENTRAL**

[Back to first page](#)

One new cases of influenza A was confirmed in the Central Zone last week. The sample was not able to be sub-typed due to low viral load. A total of two cases have been confirmed in Central Zone this season (including one influenza type B).

**Figure 4A: Laboratory confirmed respiratory virus cases, by virus type, by week, Central Zone (2010)**



Sources: DIAL – Provincial Laboratory and the Outbreak Response Toolkit (includes cases with positive respiratory specimens received on or before Dec 11, 2010). For more information on data definitions and sources see [Annex: Data Notes section at the end of this report](#)

**SURVEILLANCE AND HEALTH STATUS ASSESSMENT**

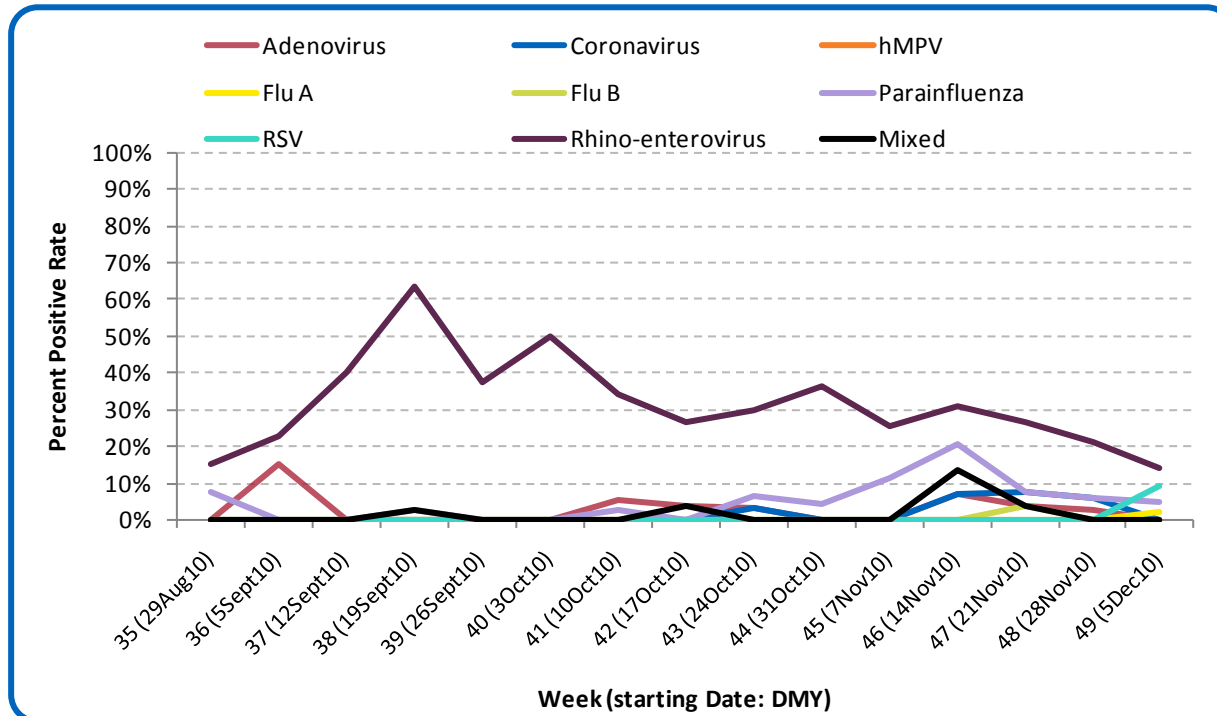
**Public Health Surveillance**

Report Date: December 14, 2010

An influenza report targeted to the general public is available at: <http://www.health.alberta.ca/health-info/influenza-evidence.html>

Figure 4B: Respiratory Specimen Percent Positive Rates, by virus type, by week, Central Zone (2010)

[Back to first page](#)



Source: DIAL – Provincial Laboratory (includes cases with positive respiratory specimens received on or before Dec 11, 2010)  
For more information on data definitions and sources see [Annex: Data Notes section at the end of this report](#)

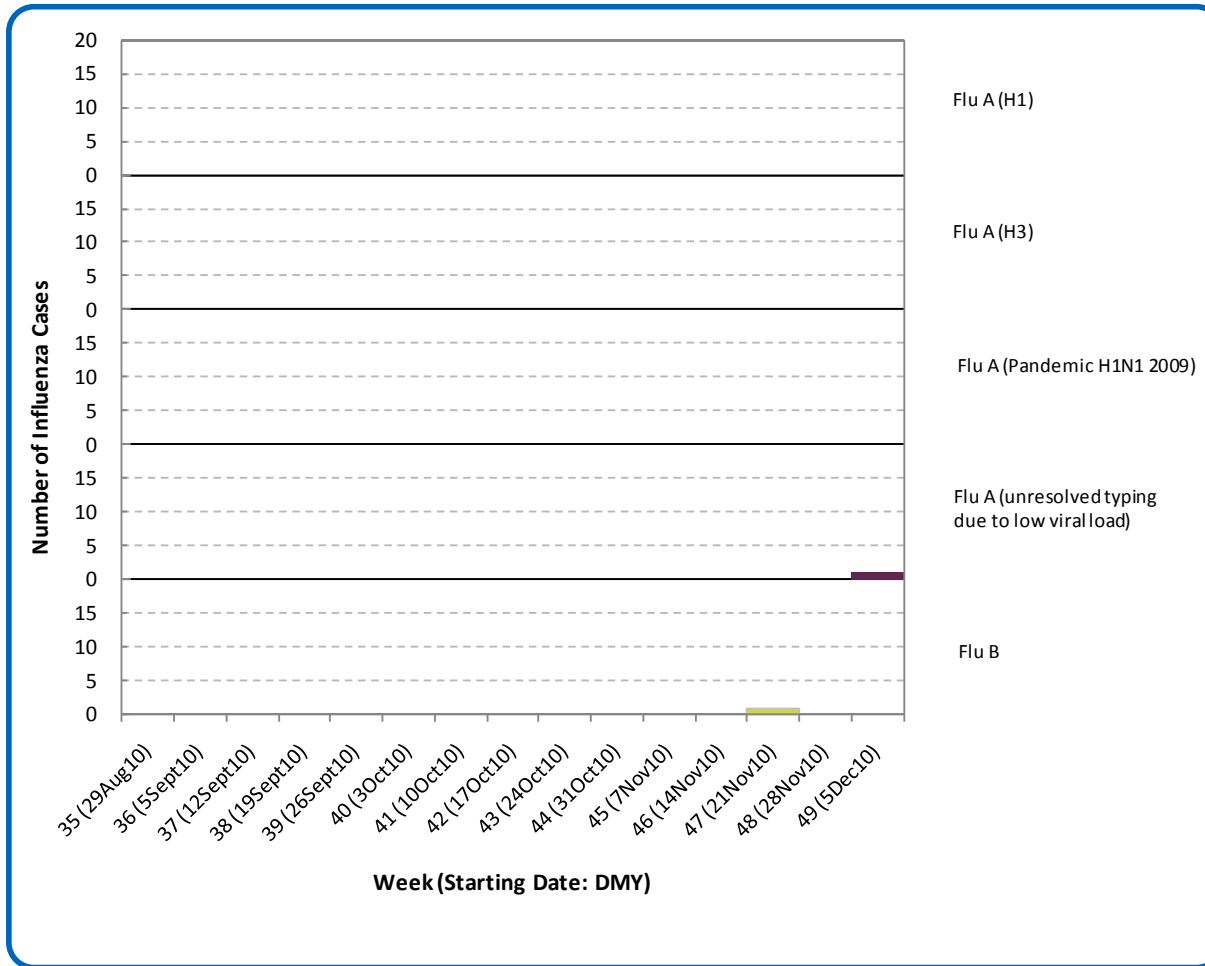
**SURVEILLANCE AND HEALTH STATUS ASSESSMENT**

**Public Health Surveillance**

Report Date: December 14, 2010

An influenza report targeted to the general public is available at: <http://www.health.alberta.ca/health-info/influenza-evidence.html>

Figure 4C: Laboratory confirmed Influenza cases, by subtype, by week specimen received, Central Zone (2010)



Source: Outbreak Response Toolkit (includes cases with positive respiratory specimens received on or before Dec 11, 2010). For more information on data definitions and sources see [Annex: Data Notes section at the end of this report](#)

SURVEILLANCE AND HEALTH STATUS ASSESSMENT

Public Health Surveillance  
Report Date: December 14, 2010

An influenza report targeted to the general public is available at: <http://www.health.alberta.ca/health-info/influenza-evidence.html>

[Back to first page](#)

**Table 4A: New Influenza cases (and age specific rates), by subtype, by age group, Central Zone (Week 49: Dec 5-11, 2010)**

	Flu A (Seasonal-H1)		Flu A (Seasonal-H3)		Flu A (Pandemic H1N1 2009)		Flu A (unresolved typing due to low viral load)		Flu B		Total	
	#	Rate (per 10,000)	#	Rate (per 10,000)	#	Rate (per 10,000)	#	Rate (per 10,000)	#	Rate (per 10,000)	#	Rate (per 10,000)
0 to <2 years	0	0.0	0	0.0	0	0.0	0	0.0	0	0.0	0	0.0
2 to <5 years	0	0.0	0	0.0	0	0.0	0	0.0	0	0.0	0	0.0
5 to <9 years	0	0.0	0	0.0	0	0.0	0	0.0	0	0.0	0	0.0
9 to <18 years	0	0.0	0	0.0	0	0.0	0	0.0	0	0.0	0	0.0
18 to <65 years	0	0.0	0	0.0	0	0.0	1	<0.1	0	0.0	1	<0.1
65 to <75 years	0	0.0	0	0.0	0	0.0	0	0.0	0	0.0	0	0.0
75+ years	0	0.0	0	0.0	0	0.0	0	0.0	0	0.0	0	0.0
<b>Total</b>	<b>0</b>	<b>0.0</b>	<b>0</b>	<b>0.0</b>	<b>0</b>	<b>0.0</b>	<b>1</b>	<b>&lt;0.1</b>	<b>0</b>	<b>0.0</b>	<b>1</b>	<b>&lt;0.1</b>

**Table 4B: Cumulative Influenza cases (and age specific rates), by subtype, by age group, Central Zone (Aug 29 – Dec 11, 2010)**

	Flu A (Seasonal-H1)		Flu A (Seasonal-H3)		Flu A (Pandemic H1N1 2009)		Flu A (unresolved typing due to low viral load)		Flu B		Total	
	#	Rate (per 10,000)	#	Rate (per 10,000)	#	Rate (per 10,000)	#	Rate (per 10,000)	#	Rate (per 10,000)	#	Rate (per 10,000)
0 to <2 years	0	0.0	0	0.0	0	0.0	0	0.0	0	0.0	0	0.0
2 to <5 years	0	0.0	0	0.0	0	0.0	0	0.0	0	0.0	0	0.0
5 to <9 years	0	0.0	0	0.0	0	0.0	0	0.0	0	0.0	0	0.0
9 to <18 years	0	0.0	0	0.0	0	0.0	0	0.0	0	0.0	0	0.0
18 to <65 years	0	0.0	0	0.0	0	0.0	1	0.0	1	<0.1	2	<0.1
65 to <75 years	0	0.0	0	0.0	0	0.0	0	0.0	0	0.0	0	0.0
75+ years	0	0.0	0	0.0	0	0.0	0	0.0	0	0.0	0	0.0
<b>Total</b>	<b>0</b>	<b>0.0</b>	<b>0</b>	<b>0.0</b>	<b>0</b>	<b>0.0</b>	<b>1</b>	<b>0.0</b>	<b>1</b>	<b>&lt;0.1</b>	<b>2</b>	<b>&lt;0.1</b>

Source: Outbreak Response Toolkit (includes cases with positive respiratory specimens received on or before Dec 11, 2010).

Population data values used to calculate rates are for June 30, 2009 and are estimated using actual population values from the Alberta Health Care Insurance Plan (AHCIP) Registration File as of March 31, 2009.

For more information on data definitions and sources see [Annex: Data Notes section at the end of this report](#)

## SURVEILLANCE AND HEALTH STATUS ASSESSMENT

### Public Health Surveillance

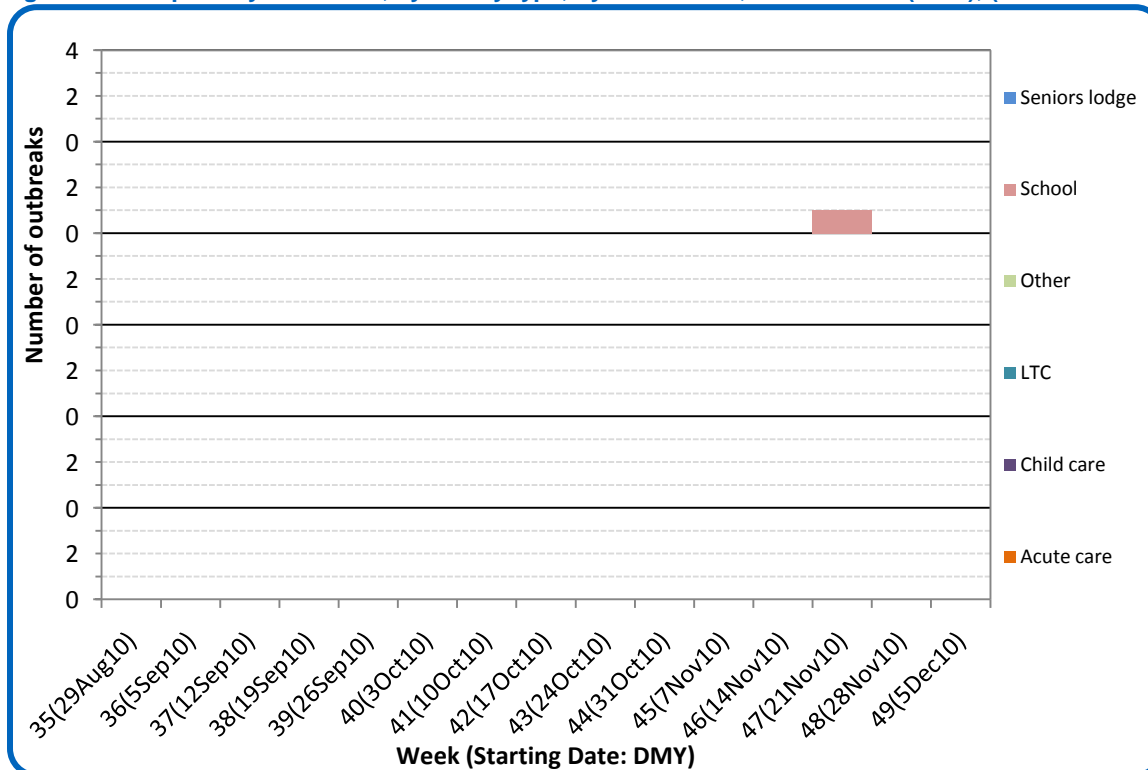
Report Date: December 14, 2010

An influenza report targeted to the general public is available at: <http://www.health.alberta.ca/health-info/influenza-evidence.html>

[Back to first page](#)

No new respiratory outbreaks were reported in Central Zone in Week 49 (Dec 5 - 11).

**Figure 4D: Respiratory outbreaks, by facility type, by onset week, Central Zone (2010); (school outbreaks may not have a laboratory confirmation)**



Source: Alberta Outbreak Reporting Form as of 23:59 on December 11, 2010.  
For more information on data definitions and sources see Annex: Data Notes section at the end of this report

**SURVEILLANCE AND HEALTH STATUS ASSESSMENT**

**Public Health Surveillance**  
Report Date: December 14, 2010

An influenza report targeted to the general public is available at: <http://www.health.alberta.ca/health-info/influenza-evidence.html>

[Back to first page](#)

### **Attack Rates in respiratory outbreaks**

No new respiratory outbreaks were reported in Central Zone in Week 49 (Dec 5 – 11).

### **Influenza-like illness visits and “Left Without Being seen”**

There are no data available from this zone.

### **Respiratory related calls to Health Link Alberta**

The number of calls to Health Link Alberta by residents of Central Zone for cough or breathing difficulties was 14% lower in Week 49 (Dec 5 - 11) than in Week 48.

### **Percentage of visits to sentinel offices with Influenza-like illness (ILI)**

There were reports of ILI-related visits to sentinel physician offices by residents of Central Zone in Week 48 (Nov 28 – Dec 4); the percentage of ILI-related visits is comparable to its historic level at this time of the year for this zone.

### **Percentage of visits to sentinel offices with lower respiratory tract infection (LTRI)**

The percentage of LTRI-related visits to sentinel physician offices by residents of Central Zone was less than 1% in Week 48 (Nov 28 – Dec 4), only a third of the Week 47 level.

The combined percentage of ILI- and LTRI-related visits to sentinel physician offices by residents of Central Zone was more than 1% in Week 48, but was less than half of the Week 47 level.

## **SURVEILLANCE AND HEALTH STATUS ASSESSMENT**

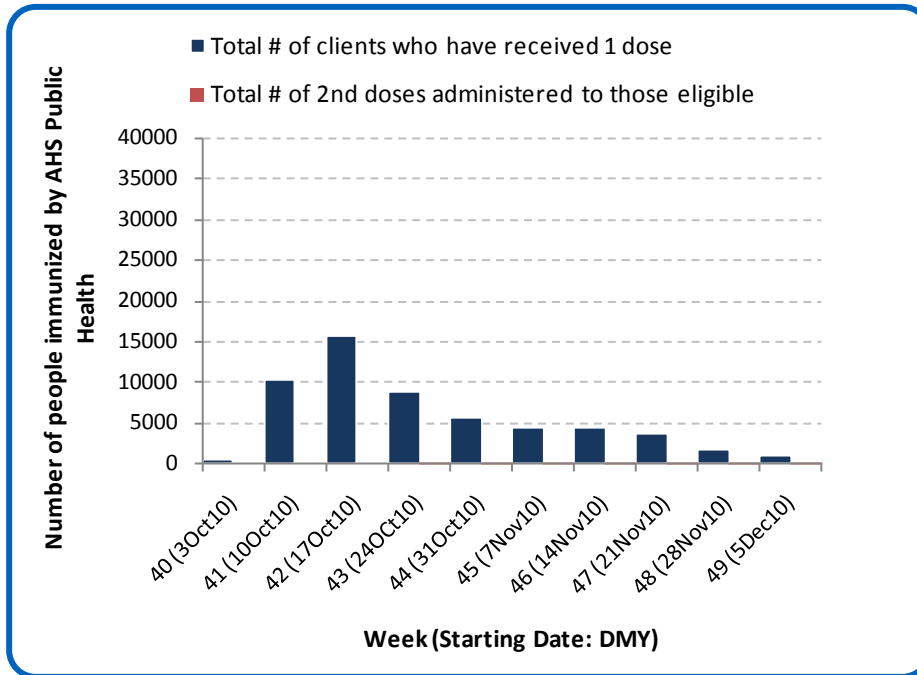
### **Public Health Surveillance**

Report Date: December 14, 2010

An influenza report targeted to the general public is available at: <http://www.health.alberta.ca/health-info/influenza-evidence.html>

[Back to first page](#)

Figure 4E: Number Immunized by AHS (Public Health), by week, Central Zone (2010)



Source: AHS Zones (doses do not include those delivered by external providers)  
 Note: Immunization coverage rates will be reported at the end of the influenza season  
 For more information on data definitions and sources see [Annex: Data Notes section at the end of this report](#)

**SURVEILLANCE AND HEALTH STATUS ASSESSMENT**

**Public Health Surveillance**

Report Date: December 14, 2010

An influenza report targeted to the general public is available at: <http://www.health.alberta.ca/health-info/influenza-evidence.html>

[Back to first page](#)

Table 4C: AHS (Public Health) Delivered Influenza Immunizations (with Cumulative totals), by priority group, Central Zone (2010)

Priority Group	Number Immunized (Week 49 – Dec5-11, 2010)	Cumulative Number Immunized (since Oct 3, 2010)
Long term care staff	3	355
Health care workers	40	2,372
Pregnant women	15	378
Residents of long term care	2	992
65 years of age and over	165	21,176
All children 6 months up to and including 23 months*	Dose #1	1,608
	Dose #2	317
All children 24 months up to and including 59 months*	Dose #1	1,983
	Dose #2	81
High risk: 5 years up to and including 8 years*	Dose #1	566
	Dose #2	11
High risk: 9 years up to and including 64 years	135	6,351
Healthy: 5 years up to and including 8 years*	Dose #1	1,703
	Dose #2	44
Healthy: 9 years up to and including 64 years	372	19,176
<b>Total number of clients who have received 1 dose</b>	<b>937</b>	<b>56,660</b>
<b>Total number of 2nd doses administered to those eligible*</b>	<b>148</b>	<b>453</b>

Source: AHS Zones (doses do not include those delivered by external providers)

\*Children under 9 years of age who have not received at least one dose of seasonal influenza vaccine in past years require two doses, given at least four weeks apart.

Note: Immunization coverage rates will be reported at the end of the influenza season

For more information on data definitions and sources see [Annex: Data Notes section at the end of this report](#)

## SURVEILLANCE AND HEALTH STATUS ASSESSMENT

### Public Health Surveillance

Report Date: December 14, 2010

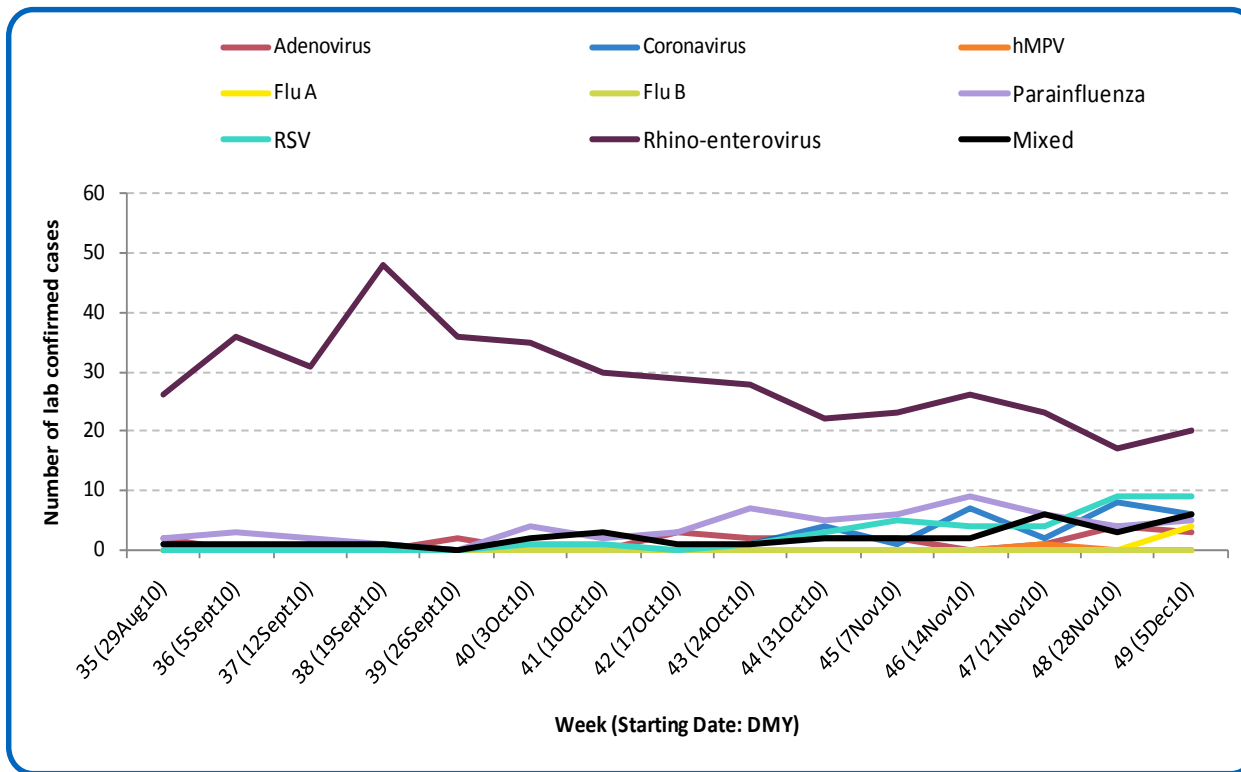
An influenza report targeted to the general public is available at: <http://www.health.alberta.ca/health-info/influenza-evidence.html>

SECTION 5: ZONE 4 – EDMONTON

[Back to first page](#)

Rhino-enterovirus is still the predominant respiratory virus circulating in the Edmonton Zone. Adenovirus, coronavirus, hMPV, parainfluenza and RSV are also circulating. The first influenza cases to be confirmed this season in Edmonton Zone occurred last week, including three cases of influenza A (H3) and one case of influenza A (H1N1) 2009. The (H1N1) 2009 case is the first to be confirmed in the province this season and occurred in an adult aged 18 to less than 65 years of age.

Figure 5A: Laboratory confirmed respiratory virus cases, by virus type, by week, Edmonton Zone (2010)



Sources: DIAL – Provincial Laboratory and the Outbreak Response Toolkit (includes cases with positive respiratory specimens received on or before Dec 11, 2010). For more information on data definitions and sources see [Annex: Data Notes section at the end of this report](#)

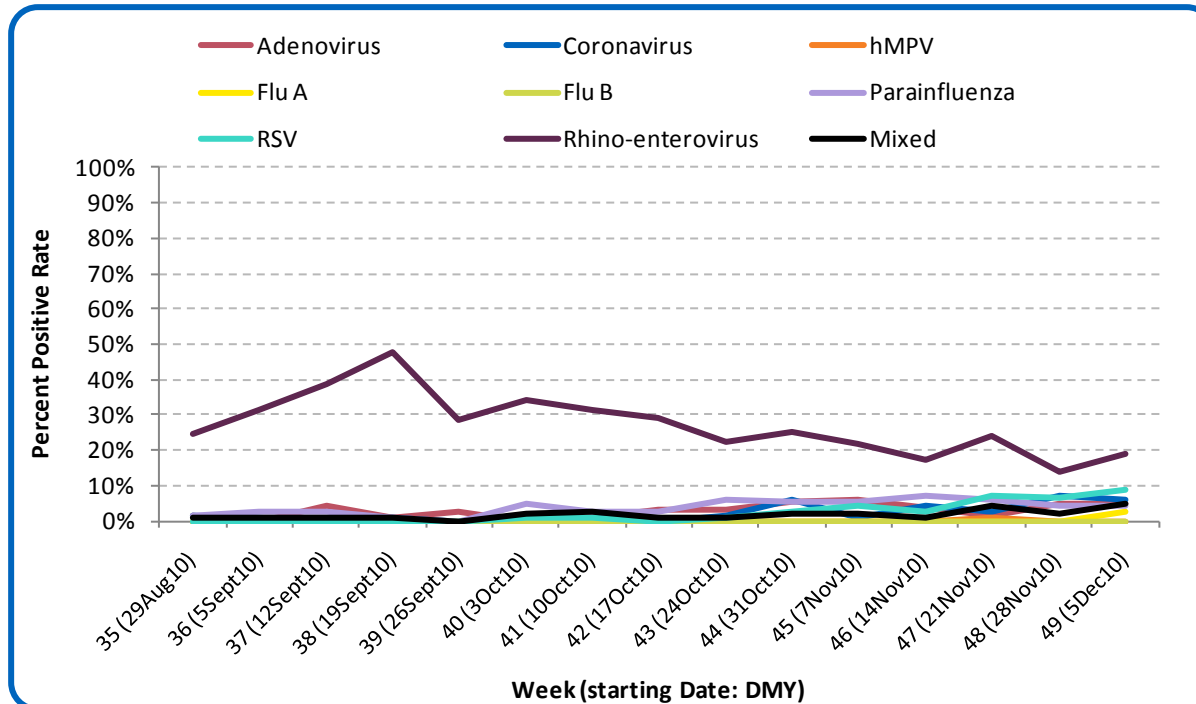
SURVEILLANCE AND HEALTH STATUS ASSESSMENT

Public Health Surveillance  
Report Date: December 14, 2010

An influenza report targeted to the general public is available at: <http://www.health.alberta.ca/health-info/influenza-evidence.html>

[Back to first page](#)

Figure 5B: Respiratory Specimen Percent Positive Rates, by virus type, by week, Edmonton Zone (2010)



Source: DIAL – Provincial Laboratory (includes cases with positive respiratory specimens received on or before Dec 11, 2010)  
For more information on data definitions and sources see [Annex: Data Notes section at the end of this report](#)

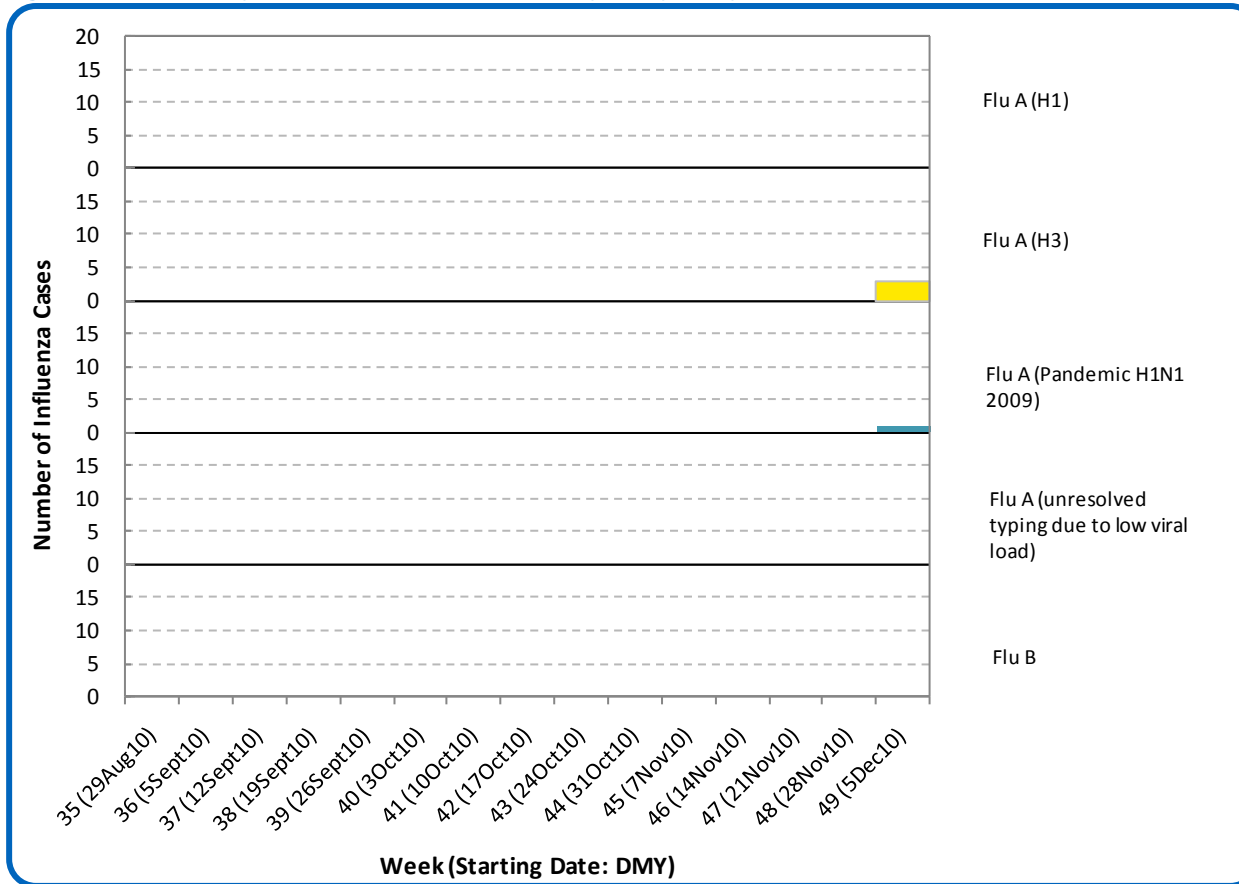
SURVEILLANCE AND HEALTH STATUS ASSESSMENT

Public Health Surveillance

Report Date: December 14, 2010

An influenza report targeted to the general public is available at: <http://www.health.alberta.ca/health-info/influenza-evidence.html>

Figure 5C: Laboratory confirmed Influenza cases, by subtype, by week specimen received, Edmonton Zone (2010)



Source: Outbreak Response Toolkit (includes cases with positive respiratory specimens received on or before Dec 11, 2010). For more information on data definitions and sources see [Annex: Data Notes section at the end of this report](#)

SURVEILLANCE AND HEALTH STATUS ASSESSMENT

Public Health Surveillance  
Report Date: December 14, 2010

An influenza report targeted to the general public is available at: <http://www.health.alberta.ca/health-info/influenza-evidence.html>

[Back to first page](#)

**Table 5A: New Influenza cases (and age specific rates), by subtype, by age group, Edmonton Zone (Week 49: Dec 5-11, 2010)**

	Flu A (Seasonal-H1)		Flu A (Seasonal-H3)		Flu A (Pandemic H1N1 2009)		Flu A (unresolved typing due to low viral load)		Flu B		Total	
	#	Rate (per 10,000)	#	Rate (per 10,000)	#	Rate (per 10,000)	#	Rate (per 10,000)	#	Rate (per 10,000)	#	Rate (per 10,000)
0 to <2 years	0	0.0	1	0.3	0	0.0	0	0.0	0	0.0	1	0.3
2 to <5 years	0	0.0	0	0.0	0	0.0	0	0.0	0	0.0	0	0.0
5 to <9 years	0	0.0	1	0.2	0	0.0	0	0.0	0	0.0	1	0.2
9 to <18 years	0	0.0	0	0.0	0	0.0	0	0.0	0	0.0	0	0.0
18 to <65 years	0	0.0	1	0.0	1	0.0	0	0.0	0	0.0	2	0.0
65 to <75 years	0	0.0	0	0.0	0	0.0	0	0.0	0	0.0	0	0.0
75+ years	0	0.0	0	0.0	0	0.0	0	0.0	0	0.0	0	0.0
<b>Total</b>	<b>0</b>	<b>0.0</b>	<b>3</b>	<b>0.0</b>	<b>1</b>	<b>0.0</b>	<b>0</b>	<b>0.0</b>	<b>0</b>	<b>0.0</b>	<b>4</b>	<b>0.0</b>

**Table 5B: Cumulative Influenza cases (and age specific rates), by subtype, by age group, Edmonton Zone (Aug 29 – Dec 11, 2010)**

	Flu A (Seasonal-H1)		Flu A (Seasonal-H3)		Flu A (Pandemic H1N1 2009)		Flu A (unresolved typing due to low viral load)		Flu B		Total	
	#	Rate (per 10,000)	#	Rate (per 10,000)	#	Rate (per 10,000)	#	Rate (per 10,000)	#	Rate (per 10,000)	#	Rate (per 10,000)
0 to <2 years	0	0.0	1	0.3	0	0.0	0	0.0	0	0.0	1	0.3
2 to <5 years	0	0.0	0	0.0	0	0.0	0	0.0	0	0.0	0	0.0
5 to <9 years	0	0.0	1	0.2	0	0.0	0	0.0	0	0.0	1	0.2
9 to <18 years	0	0.0	0	0.0	0	0.0	0	0.0	0	0.0	0	0.0
18 to <65 years	0	0.0	1	<0.1	1	0.0	0	0.0	0	0.0	2	<0.1
65 to <75 years	0	0.0	0	0.0	0	0.0	0	0.0	0	0.0	0	0.0
75+ years	0	0.0	0	0.0	0	0.0	0	0.0	0	0.0	0	0.0
<b>Total</b>	<b>0</b>	<b>0.0</b>	<b>3</b>	<b>&lt;0.1</b>	<b>1</b>	<b>0.0</b>	<b>0</b>	<b>0.0</b>	<b>0</b>	<b>0.0</b>	<b>4</b>	<b>&lt;0.1</b>

Source: Outbreak Response Toolkit (includes cases with positive respiratory specimens received on or before Dec 11, 2010). Population data values used to calculate rates are for June 30, 2009 and are estimated using actual population values from the Alberta Health Care Insurance Plan (AHCIP) Registration File as of March 31, 2009. For more information on data definitions and sources see [Annex: Data Notes section at the end of this report](#)

**SURVEILLANCE AND HEALTH STATUS ASSESSMENT**

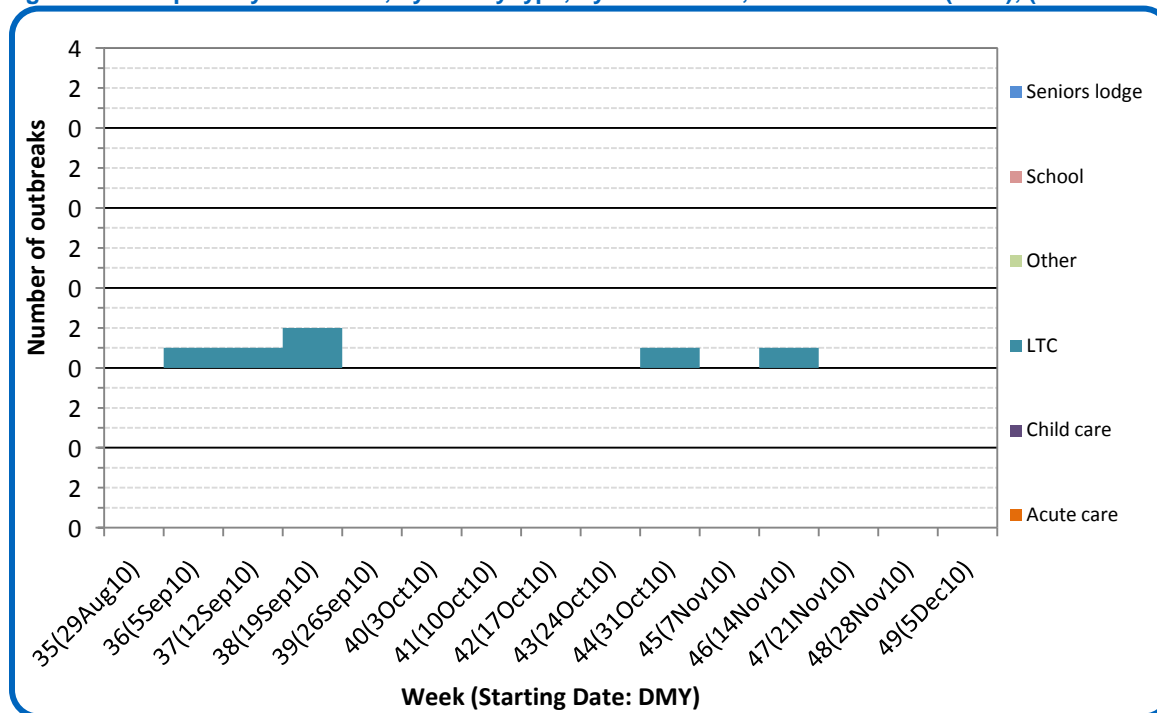
**Public Health Surveillance**  
Report Date: December 14, 2010

An influenza report targeted to the general public is available at: <http://www.health.alberta.ca/health-info/influenza-evidence.html>

[Back to first page](#)

There have been no laboratory-confirmed respiratory outbreaks in Edmonton Zone since Week 46 (Nov 14-20). One respiratory outbreak in a seniors' lodge pending laboratory confirmation had an onset date of Dec 7.

**Figure 5D: Respiratory outbreaks, by facility type, by onset week, Edmonton Zone (2010); (school outbreaks may not have a laboratory confirmation)**



Source: Alberta Outbreak Reporting Form as of 23:59 on December 11, 2010.  
For more information on data definitions and sources see [Annex: Data Notes section at the end of this report](#)

**SURVEILLANCE AND HEALTH STATUS ASSESSMENT**

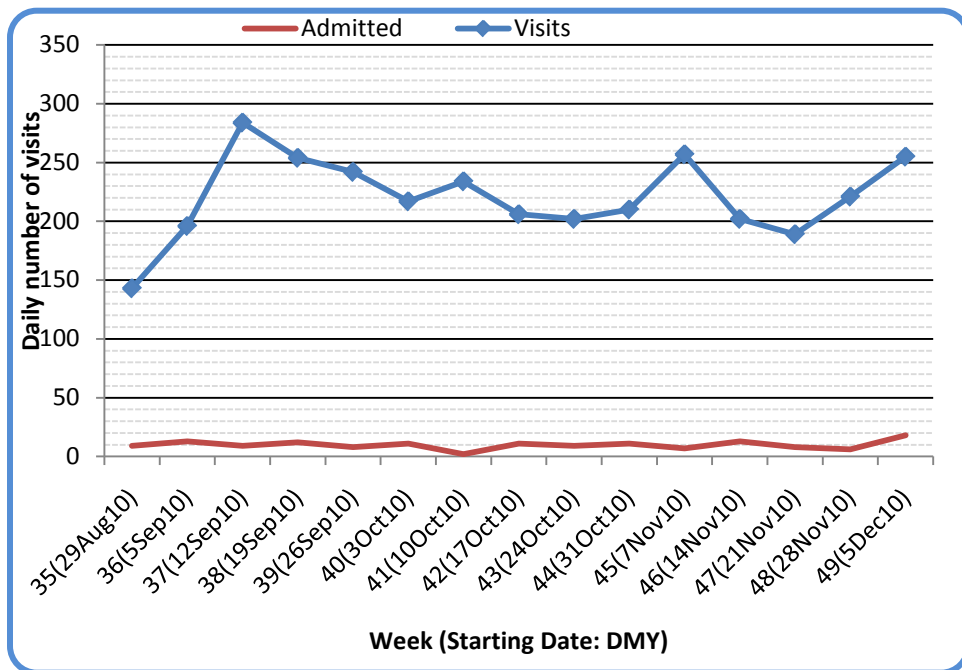
Public Health Surveillance  
Report Date: December 14, 2010

An influenza report targeted to the general public is available at: <http://www.health.alberta.ca/health-info/influenza-evidence.html>

[Back to first page](#)

The number of visits to nine emergency departments/urgent care centers in Edmonton Zone for cough/congestion in Week 49 (Dec 5-11) increased by 15% from Week 48. The increase was primarily due to increased visits by children younger than 2 years old. Both the number of admissions to hospitals and the number of visits of patients who left the EDs without being seen also increased in week 49 compared to the previous week.

**Figure 5E: Visits to emergency departments/urgent care centers for cough/congestion and admissions to hospitals, by visit week, Edmonton Zone (2010)**



Source: Alberta Real Time Syndromic Surveillance (ARTSSN) as of 23:59 on December 11, 2010. For more information on data definitions and sources see [Annex: Data Notes section at the end of this report](#)

**SURVEILLANCE AND HEALTH STATUS ASSESSMENT**

**Public Health Surveillance**

Report Date: December 14, 2010

An influenza report targeted to the general public is available at: <http://www.health.alberta.ca/health-info/influenza-evidence.html>

[Back to first page](#)

### Attack rates in respiratory outbreaks

There have been no laboratory confirmed respiratory outbreaks in Edmonton Zone since Week 46 (Nov 14 -20). The outbreak pending laboratory confirmation had a preliminary attack rate of 5%.

### Influenza-like illness visits and “Left Without Being seen”

The number of visits to emergency departments/urgent care centers was 10% higher in Week 49 (Dec 5 - 11) than in Week 48, making it the highest it's been this season. In contrast, the number of hospital admissions was 43% lower in Week 49 compared to the previous week. The number of visits to ED's for people with ILI that left without being seen was 50% higher in Week 49 than in Week 48. This indicator is also the highest it's been this season.

### Respiratory related calls to Health Link Alberta

The number of calls to Health Link Alberta by residents of Edmonton Zone for cough or breathing difficulties was 11% lower in Week 49 (Dec 5 – 11) compared to the previous week. This differed from the increasing pattern for visits to emergency/urgent care centers for cough/congestion symptoms.

### Percentage of visits to sentinel offices with influenza-like illness (ILI)

The percentage of ILI-related visits to sentinel physician offices by residents of Edmonton Zone in Week 48 (Nov 28 –Dec 4) was almost 3 times higher than it was in Week 47, but remained low compared to its historic level at this time of the year for this Zone.

### Percentage of visits to sentinel offices with lower respiratory tract infection (LRTI)

The percentage of LRTI-related visits to sentinel physician offices by residents of Edmonton Zone was 43% lower in Week 48 (Nov 28 – Dec 4) than it was in Week 47.

The combined percentage of ILI- and LRTI-related visits to sentinel physician offices by residents of Edmonton Zone was 30% lower in Week 48 than in Week 47 because of fewer LRTI-related visits.

## SURVEILLANCE AND HEALTH STATUS ASSESSMENT

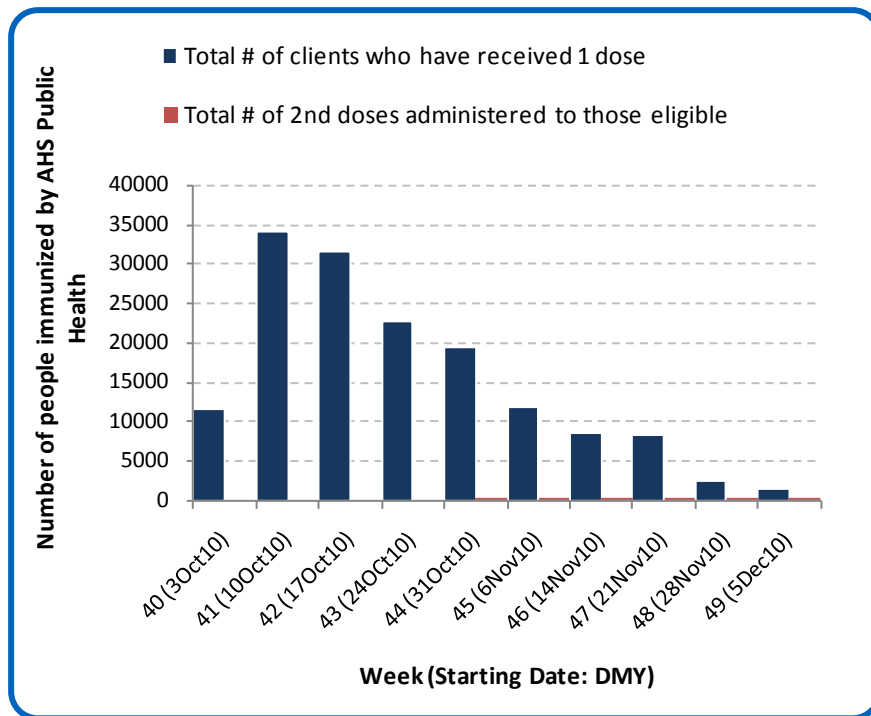
### Public Health Surveillance

Report Date: December 14, 2010

An influenza report targeted to the general public is available at: <http://www.health.alberta.ca/health-info/influenza-evidence.html>

[Back to first page](#)

Figure 5F: Number Immunized by AHS (Public Health), by week, Edmonton Zone (2010)



Source: AHS Zones (doses do not include those delivered by external providers)  
 Note: Immunization coverage rates will be reported at the end of the influenza season  
 For more information on data definitions and sources see [Annex: Data Notes section at the end of this report](#)

[Back to first page](#)

**Table 5C: AHS (Public Health) Delivered Influenza Immunizations (with Cumulative totals), by priority group, Edmonton Zone (2010)**

Priority Group	Number Immunized (Week 49 – Dec5-11, 2010)	Cumulative Number Immunized (since Oct 3, 2010)
Long term care staff	1	310
Health care workers	17	4,622
Pregnant women	37	1,262
Residents of long term care	2	1,030
65 years of age and over	163	47,660
All children 6 months up to and including 23 months*	Dose #1	4,924
	Dose #2	944
All children 24 months up to and including 59 months*	Dose #1	6,477
	Dose #2	202
High risk: 5 years up to and including 8 years*	Dose #1	1,213
	Dose #2	18
High risk: 9 years up to and including 64 years	126	16,401
Healthy: 5 years up to and including 8 years*	Dose #1	4,969
	Dose #2	104
Healthy: 9 years up to and including 64 years	744	63,667
<b>Total number of clients who have received 1 dose</b>	<b>1,604</b>	<b>152,535</b>
<b>Total number of 2nd doses administered to those eligible*</b>	<b>268</b>	<b>1,268</b>

Source: AHS Zones (doses do not include those delivered by external providers)

\*Children under 9 years of age who have not received at least one dose of seasonal influenza vaccine in past years require two doses, given at least four weeks apart.

Note: Immunization coverage rates will be reported at the end of the influenza season

For more information on data definitions and sources see [Annex: Data Notes section at the end of this report](#)

## SURVEILLANCE AND HEALTH STATUS ASSESSMENT

### Public Health Surveillance

Report Date: December 14, 2010

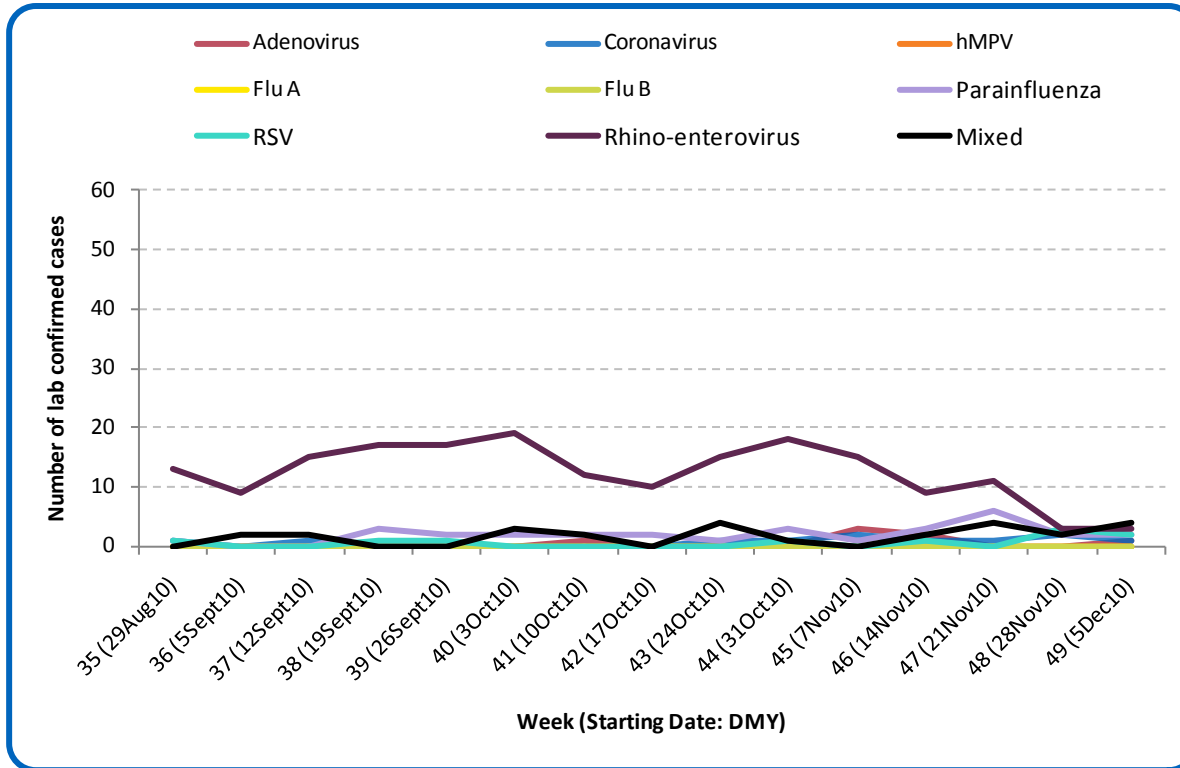
An influenza report targeted to the general public is available at: <http://www.health.alberta.ca/health-info/influenza-evidence.html>

SECTION 6: ZONE 5 – NORTH

[Back to first page](#)

There have been no laboratory confirmed cases of influenza in the North Zone this season.

Figure 6A: Laboratory confirmed respiratory virus cases, by virus type, by week, North Zone (2010)



Sources: DIAL – Provincial Laboratory and the Outbreak Response Toolkit (includes cases with positive respiratory specimens received on or before Dec 11, 2010). For more information on data definitions and sources see [Annex: Data Notes section at the end of this report](#)

SURVEILLANCE AND HEALTH STATUS ASSESSMENT

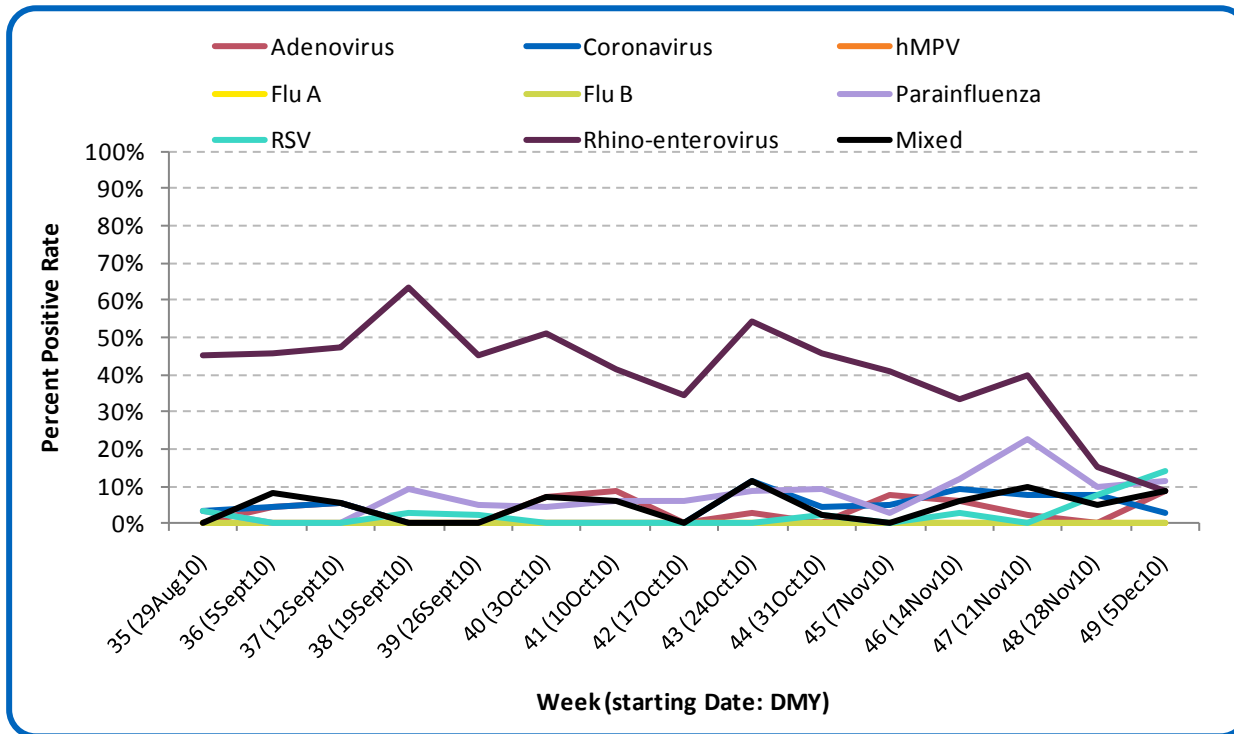
Public Health Surveillance

Report Date: December 14, 2010

An influenza report targeted to the general public is available at: <http://www.health.alberta.ca/health-info/influenza-evidence.html>

[Back to first page](#)

Figure 6B: Respiratory Specimen Percent Positive Rates, by virus type, by week, North Zone (2010)

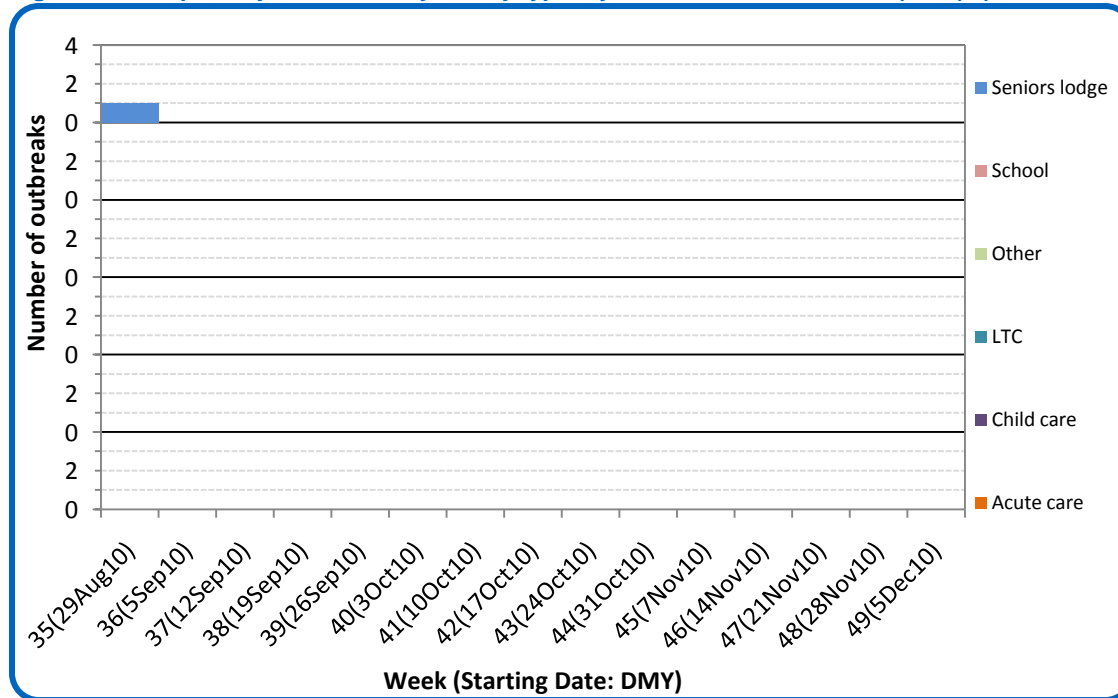


Source: DIAL – Provincial Laboratory (includes cases with positive respiratory specimens received on or before Dec 11, 2010)  
For more information on data definitions and sources see [Annex: Data Notes section at the end of this report](#)

[Back to first page](#)

Since late August, there have been no respiratory outbreaks reported from the North Zone.

Figure 6C: Respiratory outbreaks, by facility type, by onset week, North Zone (2010); (school outbreaks may not have a laboratory confirmation)



Source: Alberta Outbreak Reporting Form as of 23:59 on December 11, 2010  
 For more information on data definitions and sources see [Annex: Data Notes section at the end of this report](#)

**SURVEILLANCE AND HEALTH STATUS ASSESSMENT**

**Public Health Surveillance**  
 Report Date: December 14, 2010

An influenza report targeted to the general public is available at: <http://www.health.alberta.ca/health-info/influenza-evidence.html>

[Back to first page](#)

### Attack rates in respiratory outbreaks

There have been no reports of respiratory outbreaks in North Zone since the beginning of September.

### Influenza-like illness visits and “Left Without Being seen”

There are no data available for North Zone.

### Respiratory related calls to Health Link

The number of calls to Health Link Alberta by residents of North Zone for cough and breathing difficulties was 19% higher in Week 49 (Dec 5–11) than in Week 48.

### Percentage of visits to sentinel offices with Influenza-like illness

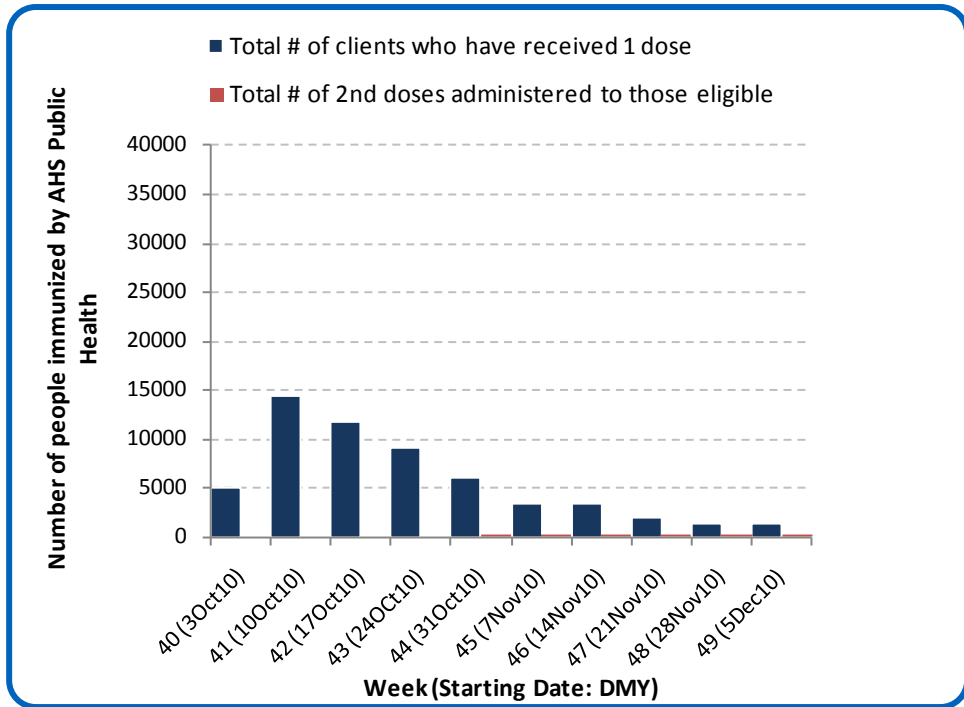
There were no reports of ILI-related visits to sentinel physician offices by residents of North Zone in Week 48 (Nov 28-Dec 4).

### Percentage of visits to sentinel offices with lower respiratory tract infection

The LRTI percentage of visits to sentinel physician offices by residents of North Zone was 5.8% in Week 48 (Nov 28-Dec 4), the highest it has been this season.

[Back to first page](#)

Figure 6D: Number Immunized by AHS (Public Health), by week, North Zone (2010)



Source: AHS Zones (doses do not include those delivered by external providers)  
 Note: Immunization coverage rates will be reported at the end of the influenza season  
 For more information on data definitions and sources see [Annex: Data Notes section at the end of this report](#)

[Back to first page](#)

Table 6A: AHS (Public Health) Delivered Influenza Immunizations (with Cumulative totals), by priority group, North Zone (2010)

Priority Group	Number Immunized (Week 49 – Dec5-11, 2010)	Cumulative Number Immunized (since Oct 3, 2010)
Long term care staff	59	781
Health care workers	288	4,504
Pregnant women	18	483
Residents of long term care	2	1,240
65 years of age and over	128	15,270
All children 6 months up to and including 23 months*	Dose #1	1,784
	Dose #2	346
All children 24 months up to and including 59 months*	Dose #1	2,271
	Dose #2	62
High risk: 5 years up to and including 8 years*	Dose #1	857
	Dose #2	7
High risk: 9 years up to and including 64 years	139	7,316
Healthy: 5 years up to and including 8 years*	Dose #1	2,178
	Dose #2	41
Healthy: 9 years up to and including 64 years	538	21,382
<b>Total number of clients who have received 1 dose</b>	<b>1,390</b>	<b>58,066</b>
<b>Total number of 2nd doses administered to those eligible*</b>	<b>90</b>	<b>456</b>

Source: AHS Zones (doses do not include those delivered by external providers)

\*Children under 9 years of age who have not received at least one dose of seasonal influenza vaccine in past years require two doses, given at least four weeks apart.

Note: Immunization coverage rates will be reported at the end of the influenza season

For more information on data definitions and sources see [Annex: Data Notes section at the end of this report](#)

## SURVEILLANCE AND HEALTH STATUS ASSESSMENT

### Public Health Surveillance

Report Date: December 14, 2010

An influenza report targeted to the general public is available at: <http://www.health.alberta.ca/health-info/influenza-evidence.html>

## ANNEX: DATA NOTES

[Back to first page](#)

### LABORATORY

Information on laboratory confirmed respiratory virus activity in Alberta is based on data from 2 sources:

- 1) Non-influenza viruses: The Alberta Provincial Public Health Laboratory DIAL system (Data Integration for Alberta Laboratories) – a specimen based system. Cases are determined by rationalizing samples from the same patient with the same virus identified within a 30-day period. The information (i.e. received date) from the first sample identifying the identical virus is used in this report.
- 2) Influenza viruses: The Alberta influenza Case Management System – an influenza case based system.

Both data sources are web-based applications supported by the Canadian Network for Public Health Intelligence.

The data in this report are based on specimens obtained from residents of Alberta; according to the date the specimen was received by the laboratory.

Definition for “mixed” – a single sample where multiple viral organisms were isolated.

### INFLUENZA-LIKE ILLNESS

Four data sources are used to provide information on utilization of primary and acute care services by people with Influenza-Like Illness (ILI). *Caution: Each source uses potentially different definitions of ILI.*

1. Primary care summaries are obtained from the TARRANT system. Patients seen by TARRANT physicians may not be representative of the general population. Reported ILI cases represent people seen by TARRANT physicians, according to the date seen by the physician. The percentage of ILI represents the proportion of patients with ILI of all patients seen by the physician.
2. In addition to reporting visits of patients with ILI, TARRANT physicians also report visits with lower respiratory tract infections (LRTI). Each visit is recorded only once, even if a patient has symptoms consistent with ILI and LRTI. The combined ILI- and LRTI-related visits are therefore suggestive of overall respiratory infections in the patient population.
3. Information on visits for ILI in Emergency Departments (ED) and urgent care centers are provided by the Alberta Real Time Syndromic Surveillance Net (ARTSSN) data repository. ILI designation is based on patients being screened in emergency departments with an ILI screening tool. The primary purpose of the ILI screening tool is to implement appropriate infection control measures. The original data sources fed to the ARTSSN data repository are EDIS (Emergency Department Information System) for the Edmonton Zone and REDIS for the Calgary Zone.
4. Health Link Alberta is a 24 hour a day, 7 day a week nurse telephone advice and health information service that provides the public with advice and information about health symptoms and concerns. The original data source for the daily calls to Health Link Alberta for ILI, cough, and breathing difficulties is the Health Link database called Sharp Focus.

## SURVEILLANCE AND HEALTH STATUS ASSESSMENT

### Public Health Surveillance

Report Date: December 14, 2010

An influenza report targeted to the general public is available at: <http://www.health.alberta.ca/health-info/influenza-evidence.html>

## OUTBREAKS

[Back to first page](#)

Upon notification of an outbreak, the *Alberta Health & Wellness/Alberta Health Services* Outbreak Reporting Form (Fillable PDF) is completed by Zone Public Health investigators and sent to *Alberta Health & Wellness and AHS Public Health Surveillance*. The form includes information about the type and location of the outbreak, type of facility, and the causative organism (confirmed or suspected). There may be a delay between the reporting of an outbreak and the identification of the organism. This report includes only those outbreaks that are laboratory confirmed and caused by influenza-like illness viruses; outbreaks that are caused by bacteria (i.e. pertussis, invasive pneumococcal disease) and other types of viruses (i.e. measles, rubella (German measles), chickenpox) are excluded. Also excluded are those outbreaks that have no causative agent identified by the Provincial Laboratory for Public Health or where specimens are not tested or an outbreak with only one infected (confirmed or probable) case during a 7 day period. This follows the same approach of PHAC FluWatch for defining ILI/influenza outbreak. The naming convention of outbreak facilities by FluWatch - "Hospital and residential institutions" - is also adopted. Outbreaks in schools are officially counted in tables or graphs whether there is or not a laboratory confirmation; outbreaks in hospital and residential institutions that are pending for laboratory confirmation are described for information only but not officially presented in graphs or tables in this report.

## INFLUENZA IMMUNIZATIONS

Influenza immunization data are reported by AHS zones. Numbers are available to the Public Health Surveillance team at the beginning of the week for the doses administered the previous week (Sunday to Saturday). It includes those doses administered by AHS (Public Health) only. Clients can only exist in one priority group. Immunization coverage rates will be reported at the end of March, 2011.

## POPULATION NUMBERS

Population data values used to calculate rates are for June 30, 2009 and are estimated using actual population values from the Alberta Health Care Insurance Plan (AHCIP) Registration File as of March 31, 2009. The following registrants are included: residents of Alberta; 'residents' of Alberta temporarily living elsewhere, such as extended visits or vacations or students attending an educational institute outside of Alberta, or Albertans temporarily (up to four years) working outside Alberta; persons during the first three months after they move from Alberta to another Canadian province; dependants of members of the RCMP and Armed Forces; persons from another country who are working or studying in Alberta on valid visas; and Natives/Aboriginals whose premiums are paid by Health Canada, First Nations and Inuit Health Branch. Not included are: members of the Armed Forces and RCMP; inmates at federal penitentiaries; persons from other provinces during their first three months in Alberta; and persons who have not registered for eligibility, or have opted out.

Slight differences between values provided at this level of aggregation and data provided at other levels of aggregation may occur because of round-off error. Population values are subject to change without notice when new source data is received.

## SURVEILLANCE AND HEALTH STATUS ASSESSMENT

### Public Health Surveillance

Report Date: December 14, 2010

An influenza report targeted to the general public is available at: <http://www.health.alberta.ca/health-info/influenza-evidence.html>