

## Weekly Report

December 21, 2010

The purpose of this report is to inform Public Health staff, primary care providers, acute care staff and other community practitioners about recent respiratory virus activity in the province of Alberta. Unless otherwise noted, all data presented are current as of the Saturday prior to the day the report is released.

To navigate to certain sections of the report or to visit other relevant websites, use the Quick Links below

[Alberta Snapshot](#)

[Section 1: Alberta](#)

[Section 2: Zone 1 - South](#)

[Section 3: Zone 2 - Calgary](#)

[Section 4: Zone 3 - Central](#)

[Section 5: Zone 4 - Edmonton](#)

[Section 6: Zone 5 - North](#)

[Annex: Data Notes](#)

**[Current Global Information](#)**

[FluWatch \(PHAC\)](#)

[FluView \(US CDC\)](#)

[HPA \(UK\)](#)

[WHO](#)

[Travel Advisories](#)

### What's New?

- Influenza activity has been increasing across parts of Europe (most notably in the UK), in temperate regions of the Northern Hemisphere including East Asia (especially Mongolia and the Republic of Korea), and North America. This rise in activity indicates the winter influenza season has started in these parts of the world. Seasonal influenza A (H3N2), influenza B and H1N1 (2009) are co-circulating. The predominant strain varies in different parts of the world.
- The Health Protection Agency of the UK has recently reported an increase in the number of severe cases of influenza H1N1 (2009) across the UK. Preliminary analysis of the information to date indicates that the virus is epidemiologically, clinically and virologically similar to that of last year's H1N1 (2009) Pandemic virus. There has been no change in the antigenic character of the virus implying that the currently available vaccine should provide protection.
- Influenza activity has increased in the US, with Alabama and Georgia reporting high levels of Influenza-like-illness (ILI). Influenza activity in Canada has increased as well, with influenza A/H3N2 continuing to be the predominant strain. The latest FluWatch report indicates the virus is most active in parts of BC, AB, MB, ON and QC. All specimens antigenically characterized in Canada so far match the components for the 2010-11 influenza vaccine. All influenza isolates tested for antiviral resistance in Canada this season were resistant to Amantadine, and sensitive to Oseltamivir and Zanamivir.
- In Alberta, RSV is now the predominant respiratory virus circulating, with ¾ of the cases occurring in infants 0-2 years of age.
- Thirteen new cases of influenza were confirmed in the province last week; three (including one infant) were sub-typed as influenza A (H1N1) 2009 and ten were sub-typed as influenza A (H3). Of the new cases, three are from Calgary Zone, eight are from Edmonton Zone, and two are from North Zone. The cases from North Zone are the first to be laboratory confirmed in this zone this season. These new cases bring the total number of laboratory confirmed influenza cases in the province to 42 (seven in South Zone, nineteen in Calgary Zone, two in Central Zone, twelve in Edmonton Zone, and two in North Zone).
- Although there were no laboratory confirmed respiratory outbreaks reported in Alberta last week, one outbreak is currently pending laboratory confirmation in an Edmonton Zone daycare facility.
- Please note that this will be the last Alberta Respiratory Virus Surveillance Update of 2010. The first report of 2011 will be released on Wednesday, January 5<sup>th</sup>.

If you have questions about the Alberta Respiratory Virus Surveillance Update, or any of the indicators, please contact: [AHSPublicHealthSurveillance@albertahealthservices.ca](mailto:AHSPublicHealthSurveillance@albertahealthservices.ca) Or phone: 780-342-0210

## Alberta Snapshot

[Back to first page](#)

Indicators			Cumulative Counts					Alberta
			Week 35 (starting Aug 29/10) to week 50 (starting Dec 12/10)					
			South	Calgary	Central	Edmonton	North	
Laboratory Confirmed Cases	Number of cases with a positive respiratory specimen <sup>1</sup>	Adenovirus	3	16	7	25	7	58
		Coronavirus	1	14	5	34	14	68
		Human metapneumovirus (hMPV)	4	1	0	1	0	6
		Influenza A	7	19	1	12	2*	41
		Influenza B	0	0	1	0	0	1
		Parainfluenza	9	17	19	66	36	147
		Respiratory syncytial virus (RSV)	5	68	6	58	17	154
		Rhino enterovirus	64	318	124	441	197	1144
		Mixed	6	36	9	45	31	127
		Total	99	489	172	682	304	1746
Outbreaks	# laboratory confirmed respiratory outbreaks <sup>2</sup>	0	6	1	8	1	15	
Influenza Immunizations	Total number of clients who have received 1 dose administered by AHS Public Health <sup>3</sup> (cumulative since Oct 3, 2010)	41,908	177,085	57,359	154,077	59,004	489,433	

-- Information not available

\*Note: One of these specimens was positive for both influenza A and RSV. To ensure an accurate count of laboratory confirmed influenza cases, this specimen has been included in the influenza A category. To ensure it has not been double counted, it has not been included in the "mixed" category.

<sup>1</sup> Sources: DIAL – Provincial Laboratory and the Outbreak Response Toolkit (includes cases with positive respiratory specimens received on or before Dec 18, 2010).

<sup>2</sup> Source: Alberta Health and Wellness Outbreak Reporting Form (Fillable PDF) from All Zones

<sup>3</sup>Source: AHS Zones (number does not include doses provided by external providers); includes first doses only for those that require two doses

For more information on data definitions and sources see [Annex: Data Notes section at the end of this report](#)

## SURVEILLANCE AND HEALTH STATUS ASSESSMENT

### Public Health Surveillance

Report Date: December 21, 2010

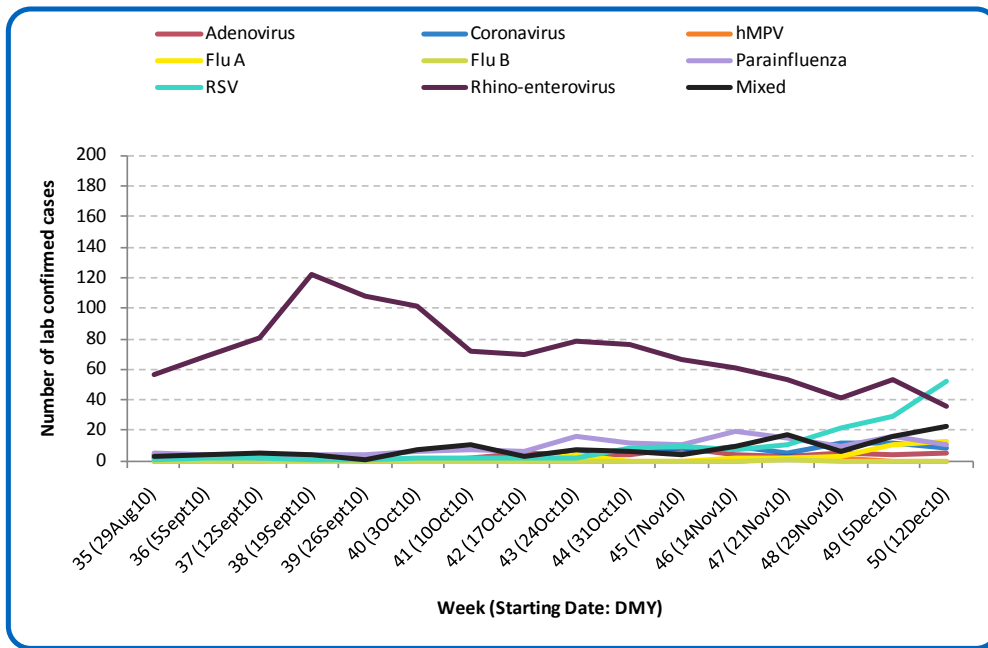
An influenza report targeted to the general public is available at: <http://www.health.alberta.ca/health-info/influenza-evidence.html>

## SECTION 1: ALBERTA

[Back to first page](#)

The predominant respiratory virus circulating in Alberta is now RSV, which has been affecting primarily infants 2 years of age and under. In addition, 13 new cases of influenza were confirmed in the province last week, including three cases of influenza A (H1N1) 2009 in two adults aged 18 to less than 65 years and one infant under the age of two years. The remaining new cases confirmed were sub-typed as influenza A (H3). This season, there have been a total of 42 confirmed cases of influenza in Alberta (34 type A H3 sub-type, four type A (H1N1) 2009, three type A with unresolved sub-typing, and one type B). In total, ten cases have been confirmed in children under the age of 9 years of age (including four infants), two cases have been confirmed in children aged nine to less than 18; 22 cases have been confirmed in adults aged 18 to less than 65 years, and eight cases have been confirmed in adults aged 65 years and over.

Figure 1A: Laboratory confirmed respiratory virus cases, by virus type, by week, Alberta (2010)



Sources: DIAL – Provincial Laboratory and the Outbreak Response Toolkit (includes cases with positive respiratory specimens received on or before Dec 18, 2010). For more information on data definitions and sources see [Annex: Data Notes section at the end of this report](#)

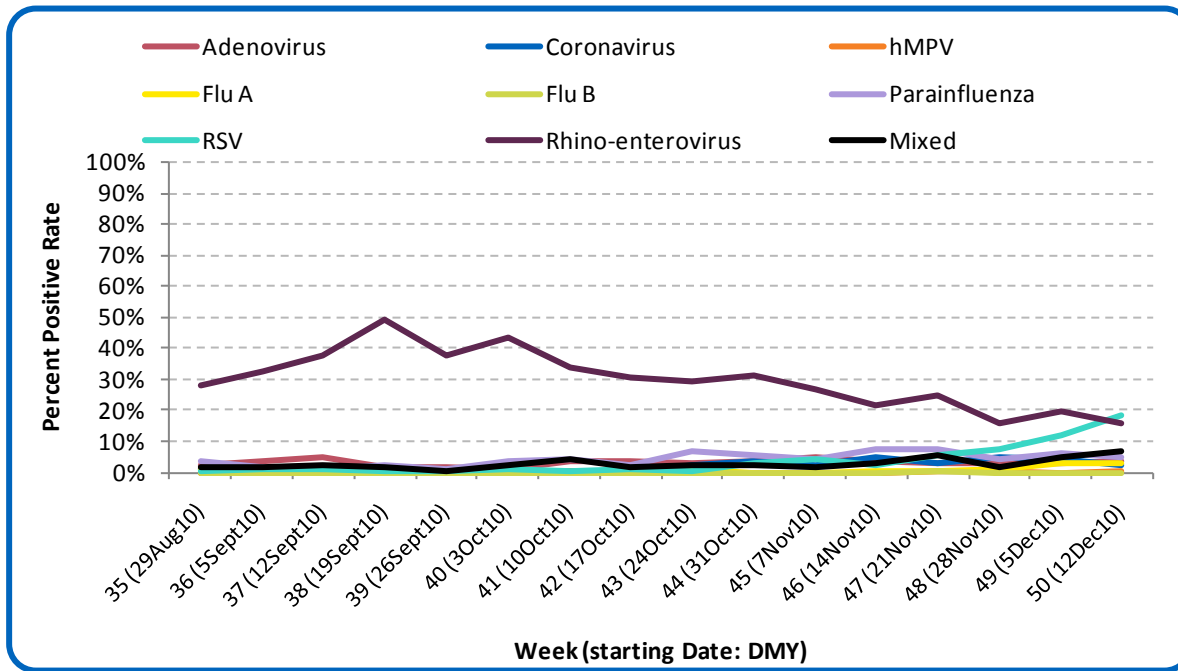
### SURVEILLANCE AND HEALTH STATUS ASSESSMENT

Public Health Surveillance  
Report Date: December 21, 2010

An influenza report targeted to the general public is available at: <http://www.health.alberta.ca/health-info/influenza-evidence.html>

Figure 1B: Respiratory Specimen Percent Positive Rates, by virus type, by week, Alberta (2010)

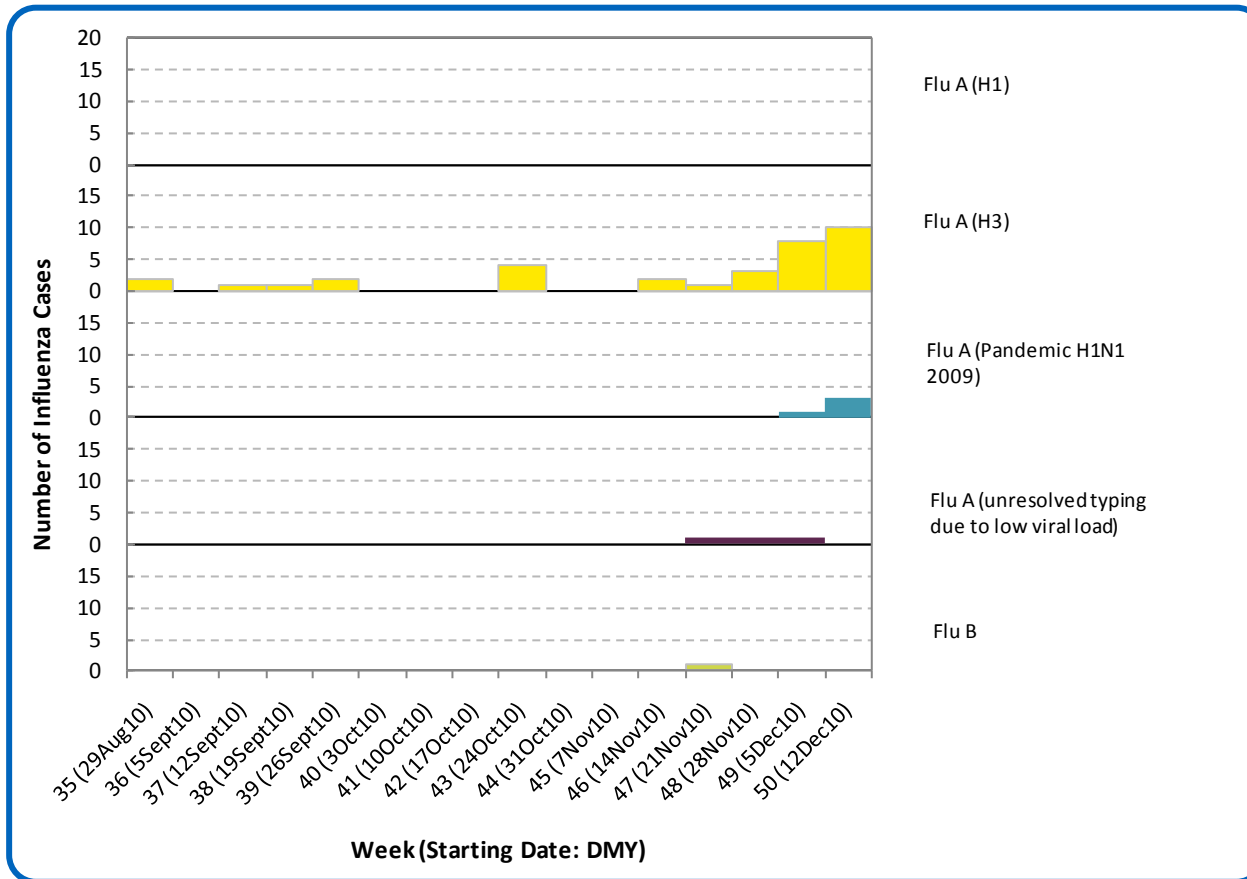
[Back to first page](#)



Source: DIAL – Provincial Laboratory (includes cases with positive respiratory specimens received on or before Dec 18, 2010)  
 For more information on data definitions and sources see [Annex: Data Notes section at the end of this report](#)

Figure 1C: Laboratory confirmed Influenza cases, by subtype, by week specimen received, Alberta (2010)

[Back to first page](#)



Source: Outbreak Response Toolkit (includes cases with positive respiratory specimens received on or before Dec 18, 2010). For more information on data definitions and sources see [Annex: Data Notes section at the end of this report](#)

[Back to first page](#)

**Table 1A: New Influenza cases (and age specific rates), by subtype, by age group, Alberta (Week 49: Dec 5-11, 2010)**

	Flu A (Seasonal-H1)		Flu A (Seasonal-H3)		Flu A (Pandemic H1N1 2009)		Flu A (unresolved typing due to low viral load)		Flu B		Total	
	#	Rate (per 10,000)	#	Rate (per 10,000)	#	Rate (per 10,000)	#	Rate (per 10,000)	#	Rate (per 10,000)	#	Rate (per 10,000)
0 to <2 years	0	0.0	1	0.1	1	0.1	0	0.0	0	0.0	2	0.2
2 to <5 years	0	0.0	1	0.1	0	0.0	0	0.0	0	0.0	1	0.1
5 to <9 years	0	0.0	0	0.0	0	0.0	0	0.0	0	0.0	0	0.0
9 to <18 years	0	0.0	2	<0.1	0	0.0	0	0.0	0	0.0	2	<0.1
18 to <65 years	0	0.0	3	<0.1	2	<0.1	0	0.0	0	0.0	5	<0.1
65 to <75 years	0	0.0	1	<0.1	0	0.0	0	0.0	0	0.0	1	<0.1
75+ years	0	0.0	2	0.1	0	0.0	0	0.0	0	0.0	2	0.1
<b>Total</b>	<b>0</b>	<b>0.0</b>	<b>10</b>	<b>&lt;0.1</b>	<b>3</b>	<b>&lt;0.1</b>	<b>0</b>	<b>0.0</b>	<b>0</b>	<b>0.0</b>	<b>13</b>	<b>&lt;0.1</b>

**Table 1B: Cumulative Influenza cases (and age specific rates), by subtype, by age group, Alberta (Aug 29 – Dec 18, 2010)**

	Flu A (Seasonal-H1)		Flu A (Seasonal-H3)		Flu A (Pandemic H1N1 2009)		Flu A (unresolved typing due to low viral load)		Flu B		Total	
	#	Rate (per 10,000)	#	Rate (per 10,000)	#	Rate (per 10,000)	#	Rate (per 10,000)	#	Rate (per 10,000)	#	Rate (per 10,000)
0 to <2 years	0	0.0	3	0.3	1	0.1	0	0.0	0	0.0	4	0.4
2 to <5 years	0	0.0	3	0.2	0	0.0	1	0.1	0	0.0	4	0.3
5 to <9 years	0	0.0	2	0.1	0	0.0	0	0.0	0	0.0	2	0.1
9 to <18 years	0	0.0	2	<0.1	0	0.0	0	0.0	0	0.0	2	<0.1
18 to <65 years	0	0.0	16	0.1	3	<0.1	2	<0.1	1	<0.1	22	0.1
65 to <75 years	0	0.0	2	0.1	0	0.0	0	0.0	0	0.0	2	0.1
75+ years	0	0.0	6	0.3	0	0.0	0	0.0	0	0.0	6	0.3
<b>Total</b>	<b>0</b>	<b>0.0</b>	<b>34</b>	<b>0.1</b>	<b>4</b>	<b>&lt;0.1</b>	<b>3</b>	<b>&lt;0.1</b>	<b>1</b>	<b>&lt;0.1</b>	<b>42</b>	<b>0.1</b>

Source for Table 1A & 1B: Outbreak Response Toolkit (includes cases with positive respiratory specimens received on or before Dec 18, 2010).

Population data values used to calculate rates are for June 30, 2009 and are estimated using actual population values from the Alberta Health Care Insurance Plan (AHCIP) Registration File as of March 31, 2009.

For more information on data definitions and sources see [Annex: Data Notes section at the end of this report](#)

## SURVEILLANCE AND HEALTH STATUS ASSESSMENT

### Public Health Surveillance

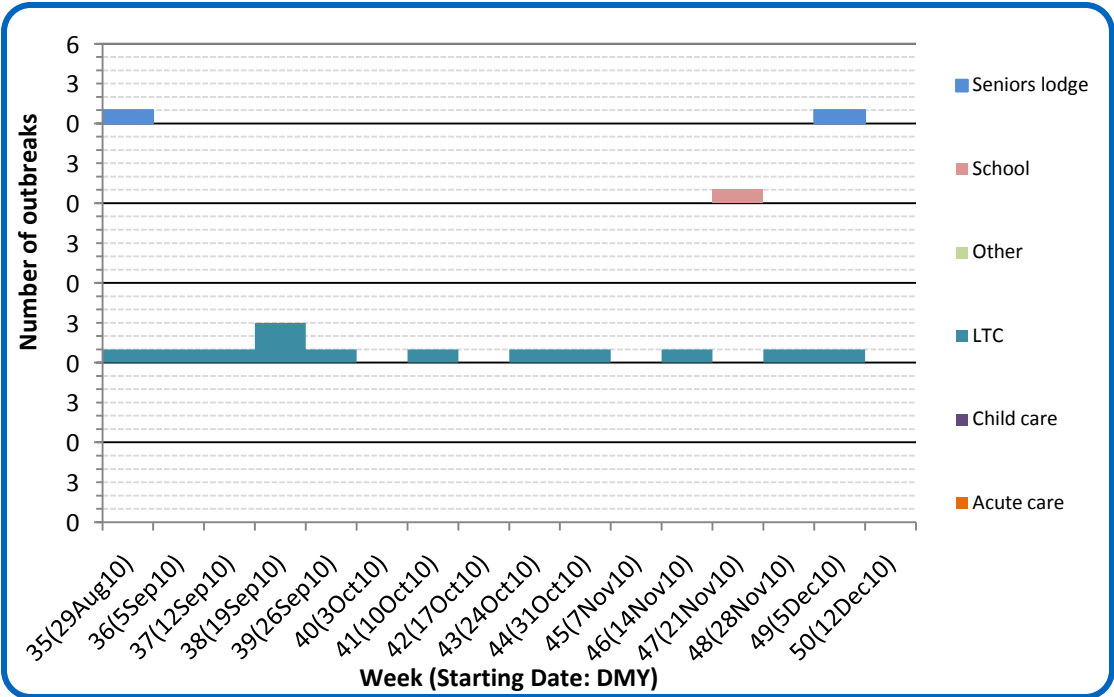
Report Date: December 21, 2010

An influenza report targeted to the general public is available at: <http://www.health.alberta.ca/health-info/influenza-evidence.html>

[Back to first page](#)

Three respiratory outbreaks have been confirmed in Alberta since Week 47 (Nov 21-27). One, described in last week’s report, occurred in Calgary Zone with an onset date of Dec 2 and was confirmed as an influenza A (H3) outbreak. Another, also described last week, occurred in Edmonton Zone with an onset date of Dec 7 and was confirmed as a coronavirus outbreak. The third confirmed outbreak, also in Edmonton Zone, had an onset date of Dec 9 and was caused by Influenza A (H3). This is the first influenza outbreak in Edmonton Zone this season. In addition, a respiratory outbreak in an Edmonton Zone daycare facility is pending laboratory confirmation. The onset date of symptoms for this outbreak was Dec 14.

Figure 1D: Respiratory outbreaks, by facility type, by onset week, Alberta (2010; school outbreaks may not have a laboratory confirmation)



Source: Alberta Outbreak Reporting Form as of 23:59 on Dec 18, 2010  
 For more information on data definitions and sources see [Annex: Data Notes section at the end of this report](#)

**SURVEILLANCE AND HEALTH STATUS ASSESSMENT**

**Public Health Surveillance**  
 Report Date: December 21, 2010

An influenza report targeted to the general public is available at: <http://www.health.alberta.ca/health-info/influenza-evidence.html>

[Back to first page](#)

### Attack rates in respiratory outbreaks

The influenza outbreak in Calgary Zone with an onset date of Dec 2 had an attack rate of 20%. The coronavirus outbreak in Edmonton Zone with an onset date of Dec 7 had an attack rate of 7.5%. The influenza outbreak in Edmonton Zone with an onset date of Dec 9 has a preliminary attack rate of 11.8%.

### Influenza-like illness visits and “Left Without Being Seen”

The combined number of visits to emergency departments/urgent care centers for influenza-like illness (ILI) from the City of Calgary and Edmonton Zone was 12% higher in Week 50 (Dec 12- 18) than in Week 49, reaching the highest level it has been this season. The number of hospital admissions, also increased by 58%. The number of visits of patients who left the EDs without being seen for ILI has remained unchanged over the last two weeks. For people with cough symptoms during that same time period, both the visits to ED’s and the number of hospital admissions were similar in Week 50 as in Week 49, but the number of patients who left the EDs without being seen was 40% lower in Week 50 than in Week 49.

### Respiratory related calls to Health Link Alberta

The number of calls to Health Link Alberta for cough or breathing difficulties was 26% higher last week compared to the previous week. This is a fairly sharp increase compared to previous weeks and is due primarily to an increase in calls for children under the age of 5 years.

### Percentage of visits to sentinel offices with influenza-like illness (ILI)

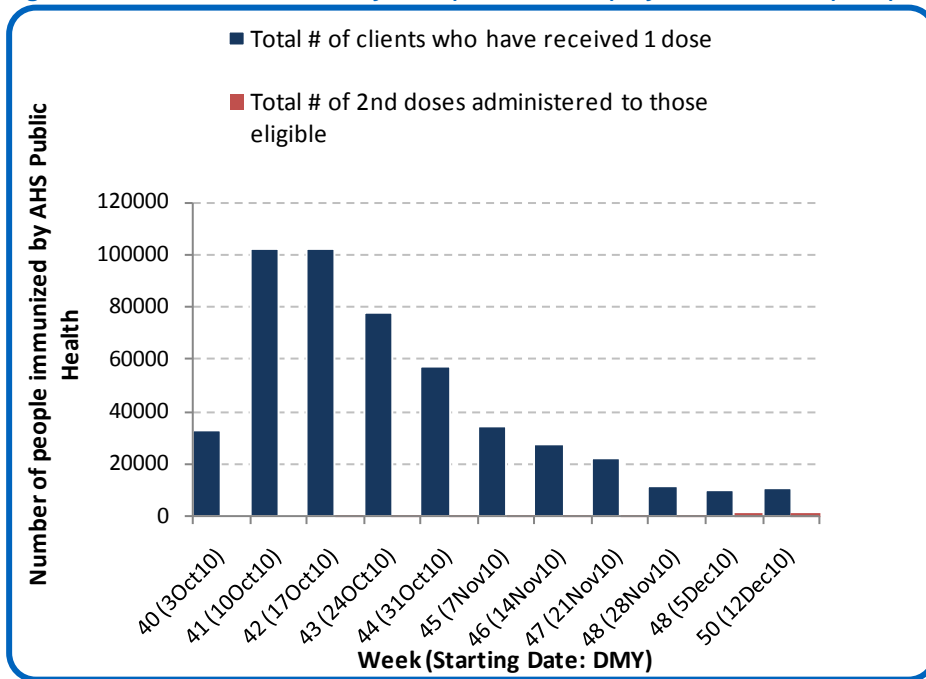
In Week 49 (Dec 5 - 11), the province-wide percentage of ILI-related visits to sentinel physician offices was 35% higher than in Week 48, but this was still less than that seen in previous weeks.

### Percentage of visits to sentinel offices with lower respiratory tract infection (LRTI)

The province-wide percentage of LRTI-related visits to sentinel physician offices was 27% higher in Week 49 (Dec 5-11) than in the previous week, which is the highest it has been this season.

[Back to first page](#)

Figure 1E: Number Immunized by AHS (Public Health), by week, Alberta (2010)



Source: AHS Zones (doses do not include those delivered by external providers);  
 Note: Immunization coverage rates will be reported at the end of the influenza season  
 For more information on data definitions and sources see [Annex: Data Notes section at the end of this report](#)

**SURVEILLANCE AND HEALTH STATUS ASSESSMENT**

**Public Health Surveillance**  
 Report Date: December 21, 2010

An influenza report targeted to the general public is available at: <http://www.health.alberta.ca/health-info/influenza-evidence.html>

[Back to first page](#)

**Table 1C: AHS (Public Health) Delivered Influenza Immunizations (with Cumulative totals), by priority group, Alberta (2010)**

Priority Group	Number Immunized (Week 50 – Dec 12-18, 2010)	Cumulative Number Immunized (since Oct 3, 2010)
Long term care staff	31	2,507
Health care workers	202	18,289
Pregnant women	194	4,202
Residents of long term care	16	4,701
65 years of age and over	1,254	144,283
All children 6 months up to and including 23 months*	Dose #1	1,161
	Dose #2	775
All children 24 months up to and including 59 months*	Dose #1	835
	Dose #2	152
High risk: 5 years up to and including 8 years*	Dose #1	171
	Dose #2	27
High risk: 9 years up to and including 64 years	1,160	53,744
Healthy: 5 years up to and including 8 years*	Dose #1	537
	Dose #2	56
Healthy: 9 years up to and including 64 years	5,194	197,980
<b>Total number of clients who have received 1 dose</b>	<b>10,755</b>	<b>489,433</b>
<b>Total number of 2nd doses administered to those eligible*</b>	<b>1,010</b>	<b>5,126</b>

Source: AHS Zones (doses do not include those delivered by external providers)

\*Children under 9 years of age who have not received at least one dose of seasonal influenza vaccine in past years require two doses, given at least four weeks apart.

Note: Immunization coverage rates will be reported at the end of the influenza season

For more information on data definitions and sources see [Annex: Data Notes section at the end of this report](#)

## SURVEILLANCE AND HEALTH STATUS ASSESSMENT

### Public Health Surveillance

Report Date: December 21, 2010

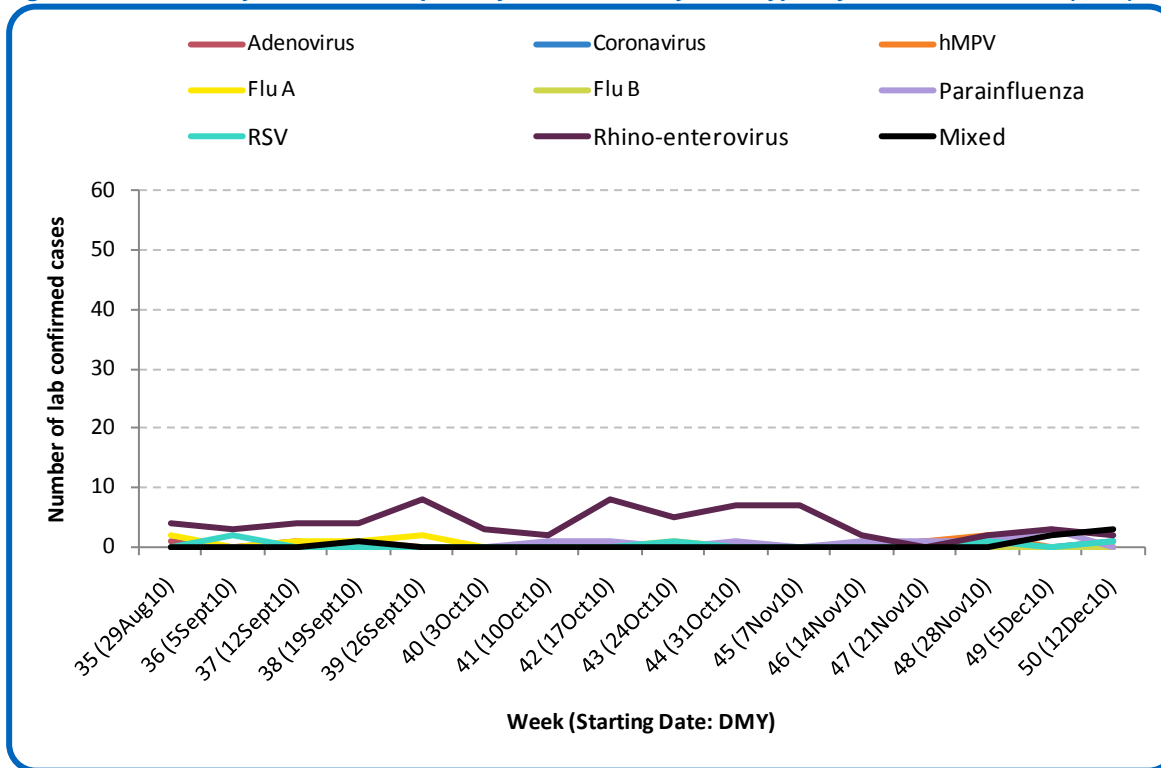
An influenza report targeted to the general public is available at: <http://www.health.alberta.ca/health-info/influenza-evidence.html>

SECTION 2: ZONE 1 - SOUTH

[Back to first page](#)

Generally, respiratory virus activity is low in the South Zone. No new influenza cases have been confirmed in South Zone since late October. In total, there have been seven confirmed cases of influenza A (H3) in South Zone this season. Five cases have been in adults aged 18 to less than 65 years and two cases have been in children under the age of 5 years.

Figure 2A: Laboratory confirmed respiratory virus cases, by virus type, by week, South Zone (2010)



Sources: DIAL – Provincial Laboratory and the Outbreak Response Toolkit (includes cases with positive respiratory specimens received on or before Dec 18, 2010). For more information on data definitions and sources see [Annex: Data Notes section at the end of this report](#)

SURVEILLANCE AND HEALTH STATUS ASSESSMENT

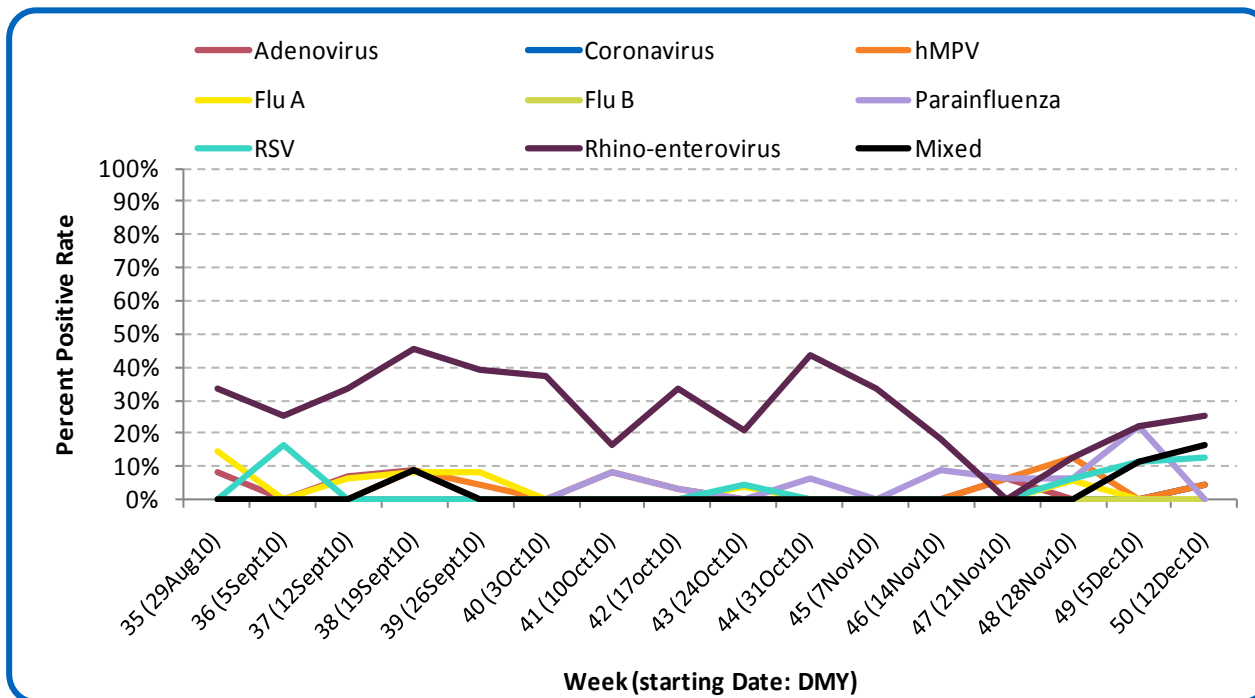
Public Health Surveillance

Report Date: December 21, 2010

An influenza report targeted to the general public is available at: <http://www.health.alberta.ca/health-info/influenza-evidence.html>

[Back to first page](#)

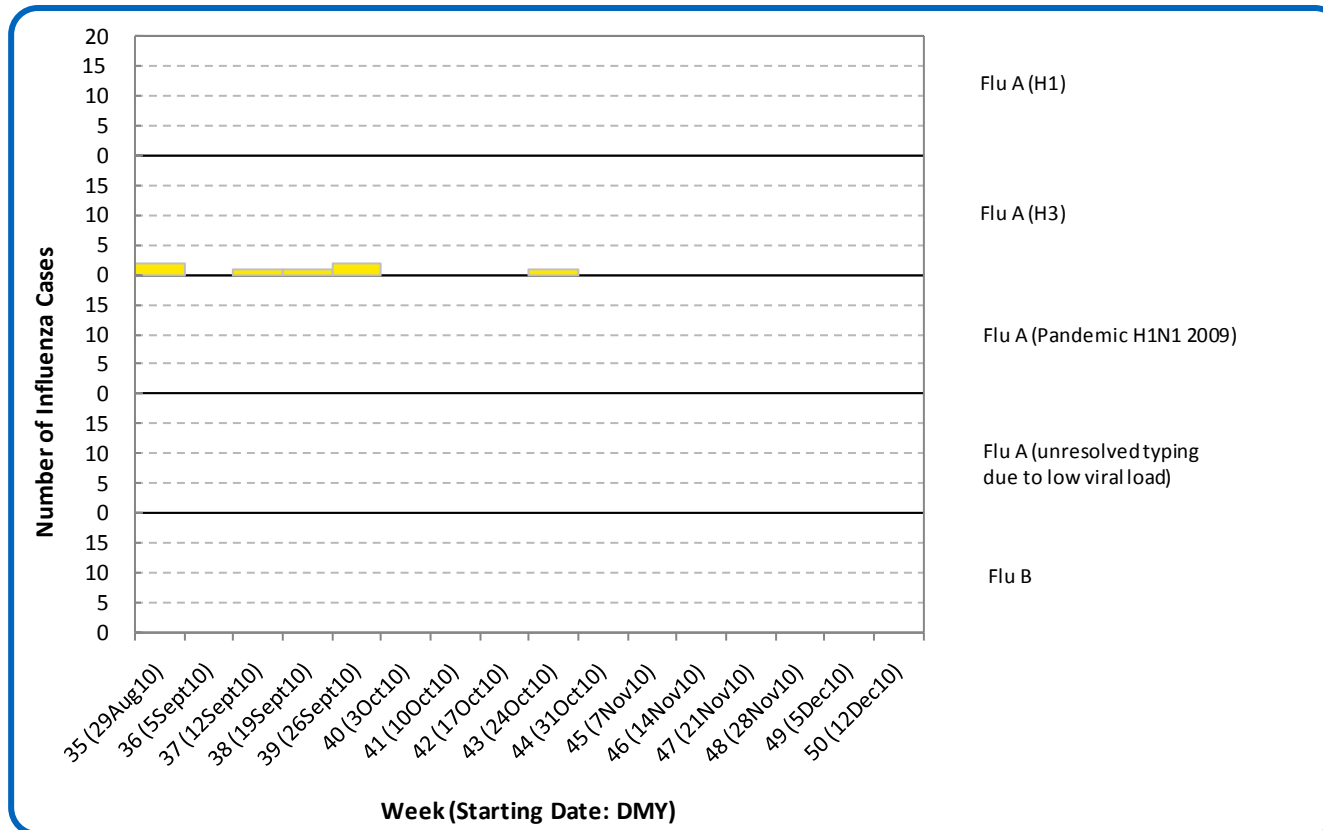
Figure 2B: Respiratory Specimen Percent Positive Rates, by virus type, by week, South Zone (2010)



Source: DIAL – Provincial Laboratory (includes cases with positive respiratory specimens received on or before Dec 18, 2010)  
For more information on data definitions and sources see [Annex: Data Notes section at the end of this report](#)

[Back to first page](#)

Figure 2C: Laboratory confirmed Influenza cases, by subtype, by week specimen received, South Zone (2010)



Source: Outbreak Response Toolkit (includes cases with positive respiratory specimens received on or before Dec 18, 2010). For more information on data definitions and sources see [Annex: Data Notes section at the end of this report](#)

[Back to first page](#)

**Table 2A: Cumulative Influenza cases (and age specific rates), by subtype, by age group, South Zone (Aug 29–Dec 18, 2010)**

	Flu A (Seasonal-H1)		Flu A (Seasonal-H3)		Flu A (Pandemic H1N1 2009)		Flu A (unresolved typing due to low viral load)			Flu B		Total
	#	Rate (per 10,000)	#	Rate (per 10,000)	#	Rate (per 10,000)	#	Rate (per 10,000)	#	Rate (per 10,000)	#	Rate (per 10,000)
0 to <2 years	0	0.0	0	0.0	0	0.0	0	0.0	0	0.0	0	0.0
2 to <5 years	0	0.0	2	1.7	0	0.0	0	0.0	0	0.0	2	1.7
5 to <9 years	0	0.0	0	0.0	0	0.0	0	0.0	0	0.0	0	0.0
9 to <18 years	0	0.0	0	0.0	0	0.0	0	0.0	0	0.0	0	0.0
18 to <65 years	0	0.0	5	0.3	0	0.0	0	0.0	0	0.0	5	0.3
65 to <75 years	0	0.0	0	0.0	0	0.0	0	0.0	0	0.0	0	0.0
75+ years	0	0.0	0	0.0	0	0.0	0	0.0	0	0.0	0	0.0
<b>Total</b>	<b>0</b>	<b>0.0</b>	<b>7</b>	<b>0.3</b>	<b>0</b>	<b>0.0</b>	<b>0</b>	<b>0.0</b>	<b>0</b>	<b>0.0</b>	<b>7</b>	<b>0.3</b>

Source: Outbreak Response Toolkit (includes cases with positive respiratory specimens received on or before Dec 18, 2010).

Population data values used to calculate rates are for June 30, 2009 and are estimated using actual population values from the Alberta Health Care Insurance Plan (AHCIP) Registration File as of March 31, 2009.

For more information on data definitions and sources see [Annex: Data Notes section at the end of this report](#)

[Back to first page](#)

### **Attack rates in respiratory outbreaks**

There have been no respiratory outbreaks reported in the South Zone this season.

### **Influenza-like illness visits and “Left Without Being Seen”**

This information is not available for the South Zone.

### **Respiratory related calls to Health Link Alberta**

The number of calls to Health Link Alberta for cough or breathing difficulties by residents of the South Zone was 56% higher in Week 50 (Dec 12 - 18) than in Week 49, reaching the highest level this season. This increase is due primarily to calls for children under the age of 5 years.

### **Percentage of visits to sentinel offices with Influenza-like illness (ILI)**

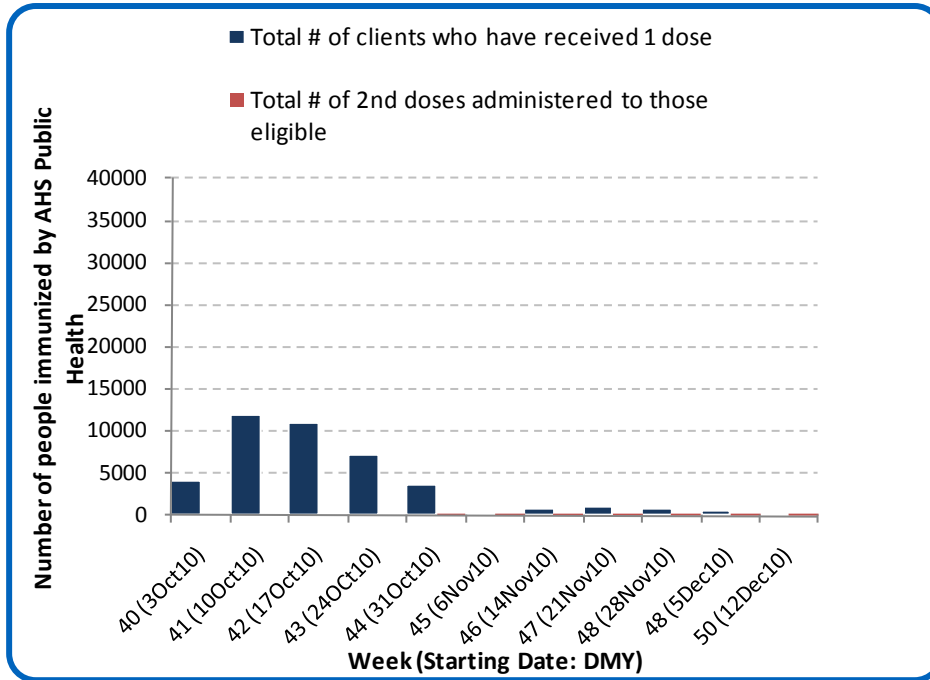
There were reports of ILI-related visits to sentinel physician offices by residents of the South Zone in Week 49 (Dec 5-11), however the percentage is low (<1%).

### **Percentage of visits to sentinel offices with lower respiratory tract infection (LRTI)**

There were no reports of LRTI-related visits to sentinel physician offices by residents of the South Zone in Week 49 (Dec 5 - 11).

[Back to first page](#)

Figure 2D: Number Immunized by AHS (Public Health), by week, South Zone (2010)



Source: AHS Zones (doses do not include those delivered by external providers)  
 Note: Immunization coverage rates will be reported at the end of the influenza season  
 For more information on data definitions and sources see [Annex: Data Notes section at the end of this report](#)

**SURVEILLANCE AND HEALTH STATUS ASSESSMENT**

**Public Health Surveillance**  
 Report Date: December 21, 2010

An influenza report targeted to the general public is available at: <http://www.health.alberta.ca/health-info/influenza-evidence.html>

Table 2B: AHS (Public Health) Delivered Influenza Immunizations (with Cumulative totals), by priority group, South Zone (2010)

[Back to first page](#)

Priority Group	Number Immunized (Week 50 – Dec 12-18, 2010)	Cumulative Number Immunized (since Oct 3, 2010)
Long term care staff	4	598
Health care workers	6	1,533
Pregnant women	7	280
Residents of long term care	8	728
65 years of age and over	73	15,535
All children 6 months up to and including 23 months*	Dose #1	47
	Dose #2	50
All children 24 months up to and including 59 months*	Dose #1	29
	Dose #2	5
High risk: 5 years up to and including 8 years*	Dose #1	11
	Dose #2	2
High risk: 9 years up to and including 64 years	36	4,042
Healthy: 5 years up to and including 8 years*	Dose #1	17
	Dose #2	2
Healthy: 9 years up to and including 64 years	144	14,261
<b>Total number of clients who have received 1 dose</b>	<b>382</b>	<b>41,908</b>
<b>Total number of 2nd doses administered to those eligible*</b>	<b>59</b>	<b>399</b>

Source: AHS Zones (doses do not include those delivered by external providers)

\*Children under 9 years of age who have not received at least one dose of seasonal influenza vaccine in past years require two doses, given at least four weeks apart.

Note: Immunization coverage rates will be reported at the end of the influenza season

For more information on data definitions and sources see [Annex: Data Notes section at the end of this report](#)

## SURVEILLANCE AND HEALTH STATUS ASSESSMENT

### Public Health Surveillance

Report Date: December 21, 2010

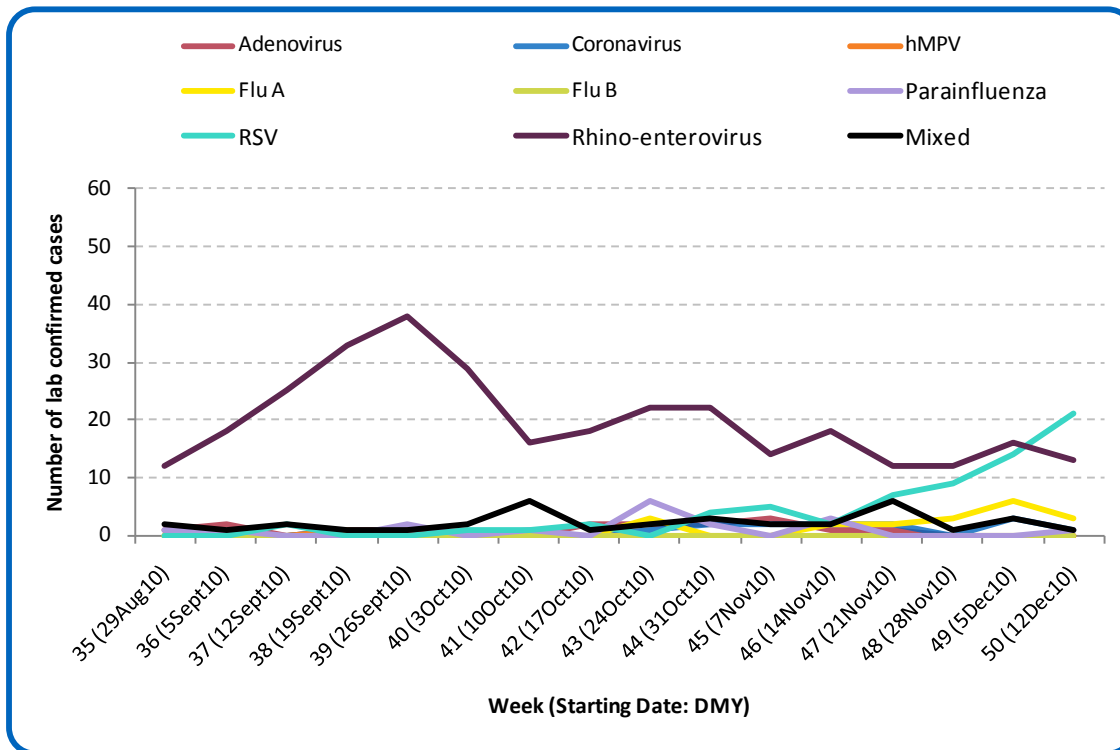
An influenza report targeted to the general public is available at: <http://www.health.alberta.ca/health-info/influenza-evidence.html>

**SECTION 3: ZONE 2 - CALGARY**

[Back to first page](#)

RSV is now the predominant virus circulating in Calgary Zone. Most of the laboratory confirmed cases have been in infants two years of age and under. In addition, three new cases of influenza were confirmed in Calgary Zone last week. These included two cases of influenza A (H1N1) 2009 in adults aged 18 to less than 65 years of age and one case of influenza A (H3) in a child aged nine to less than 18 years. The influenza A (H1N1) 2009 cases are the first to be confirmed in Calgary Zone this season. Since the beginning of the season, a total of 19 cases of influenza A have been confirmed in the Calgary Zone.

**Figure 3A: Laboratory confirmed respiratory virus cases, by virus type, by week, Calgary Zone (2010)**



Sources: DIAL – Provincial Laboratory and the Outbreak Response Toolkit (includes cases with positive respiratory specimens received on or before Dec 18, 2010). For more information on data definitions and sources see [Annex: Data Notes section at the end of this report](#)

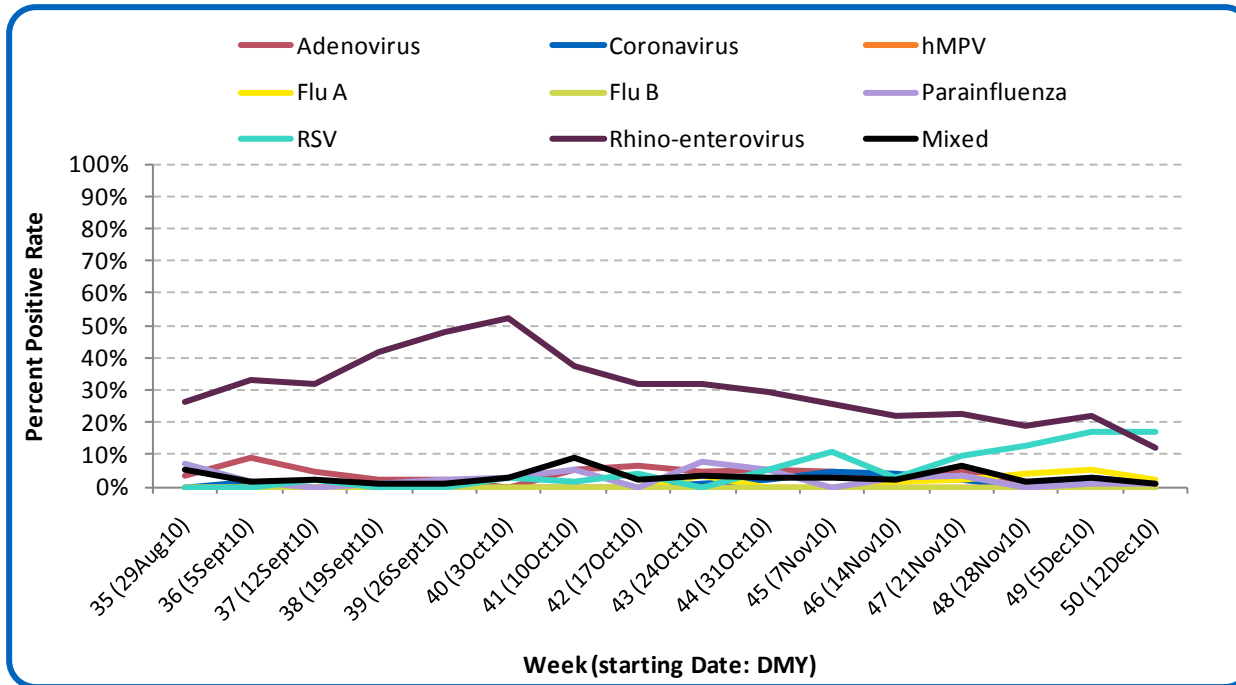
**SURVEILLANCE AND HEALTH STATUS ASSESSMENT**

**Public Health Surveillance**  
Report Date: December 21, 2010

An influenza report targeted to the general public is available at: <http://www.health.alberta.ca/health-info/influenza-evidence.html>

[Back to first page](#)

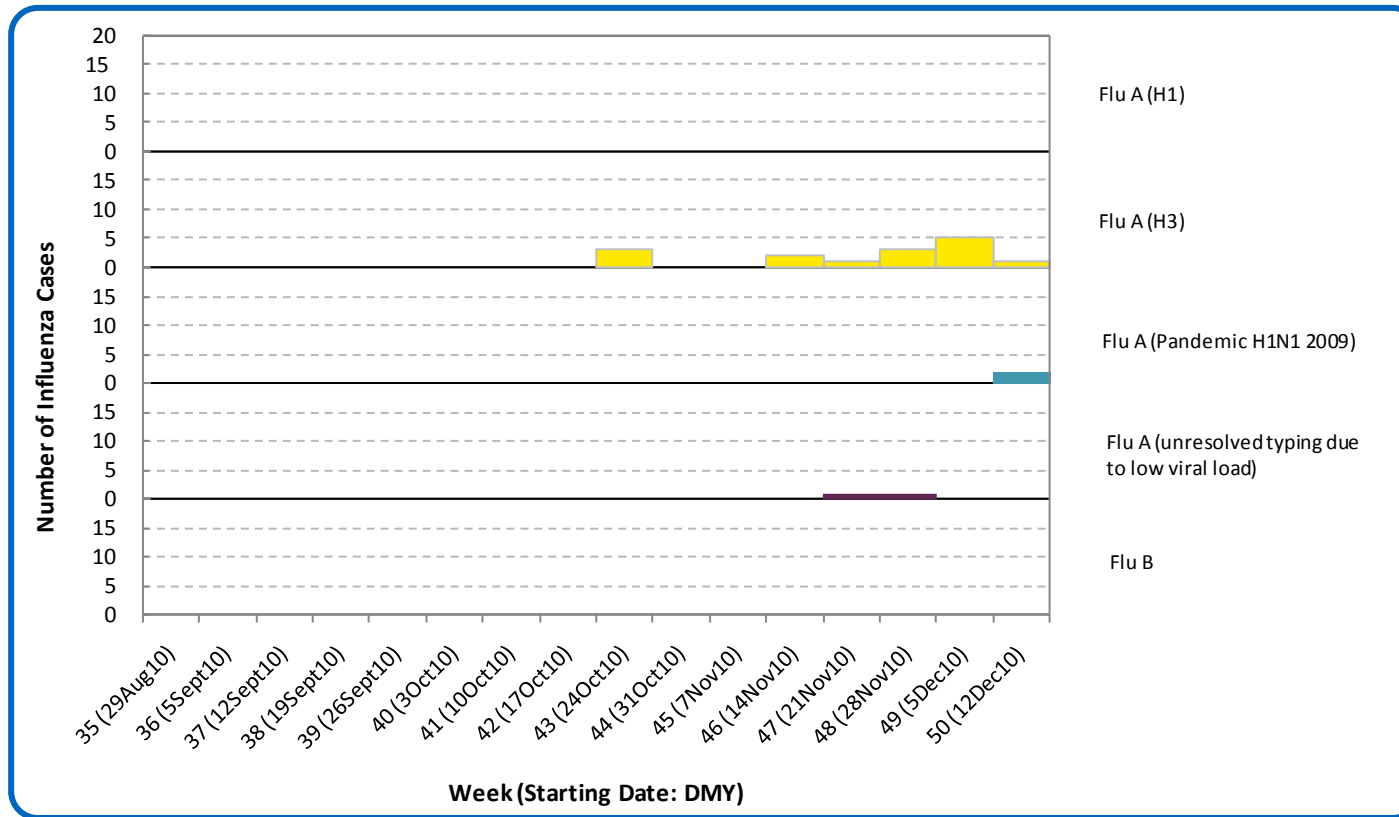
Figure 3B: Respiratory Specimen Percent Positive Rates, by virus type, by week, Calgary Zone (2010)



Source: DIAL – Provincial Laboratory (includes cases with positive respiratory specimens received on or before Dec 18, 2010)  
For more information on data definitions and sources see [Annex: Data Notes section at the end of this report](#)

[Back to first page](#)

Figure 3C: Laboratory confirmed Influenza cases, by subtype, by week specimen received, Calgary Zone (2010)



Source: Outbreak Response Toolkit (includes cases with positive respiratory specimens received on or before Dec 18, 2010).  
For more information on data definitions and sources see [Annex: Data Notes section at the end of this report](#)

**SURVEILLANCE AND HEALTH STATUS ASSESSMENT**

**Public Health Surveillance**  
Report Date: December 21, 2010

An influenza report targeted to the general public is available at: <http://www.health.alberta.ca/health-info/influenza-evidence.html>

[Back to first page](#)

**Table 3A: New Influenza cases (and age specific rates), by subtype, by age group, Calgary Zone (Week 49: Dec 5-11, 2010)**

	Flu A (Seasonal-H1)		Flu A (Seasonal-H3)		Flu A (Pandemic H1N1 2009)		Flu A (unresolved typing due to low viral load)		Flu B		Total	
	#	Rate (per 10,000)	#	Rate (per 10,000)	#	Rate (per 10,000)	#	Rate (per 10,000)	#	Rate (per 10,000)	#	Rate (per 10,000)
	0 to <2 years	0	0.0	0	0.0	0	0.0	0	0.0	0	0.0	0
2 to <5 years	0	0.0	0	0.0	0	0.0	0	0.0	0	0.0	0	0.0
5 to <9 years	0	0.0	0	0.0	0	0.0	0	0.0	0	0.0	0	0.0
9 to <18 years	0	0.0	1	0.1	0	0.0	0	0.0	0	0.0	1	0.1
18 to <65 years	0	0.0	0	0.0	2	<0.1	0	0.0	0	0.0	2	<0.1
65 to <75 years	0	0.0	0	0.0	0	0.0	0	0.0	0	0.0	0	0.0
75+ years	0	0.0	0	0.0	0	0.0	0	0.0	0	0.0	0	0.0
<b>Total</b>	<b>0</b>	<b>0.0</b>	<b>1</b>	<b>&lt;0.1</b>	<b>2</b>	<b>&lt;0.1</b>	<b>0</b>	<b>0.0</b>	<b>0</b>	<b>0.0</b>	<b>3</b>	<b>&lt;0.1</b>

**Table 3B: Cumulative Influenza cases (and age specific rates), by subtype, by age group, Calgary Zone (Aug 29 – Dec 18, 2010)**

	Flu A (Seasonal-H1)		Flu A (Seasonal-H3)		Flu A (Pandemic H1N1 2009)		Flu A (unresolved typing due to low viral load)		Flu B		Total	
	#	Rate (per 10,000)	#	Rate (per 10,000)	#	Rate (per 10,000)	#	Rate (per 10,000)	#	Rate (per 10,000)	#	Rate (per 10,000)
	0 to <2 years	0	0.0	1	0.3	0	0.0	0	0.0	0	0.0	1
2 to <5 years	0	0.0	0	0.0	0	0.0	1	0.2	0	0.0	1	0.2
5 to <9 years	0	0.0	1	0.2	0	0.0	0	0.0	0	0.0	1	0.2
9 to <18 years	0	0.0	1	0.1	0	0.0	0	0.0	0	0.0	1	0.1
18 to <65 years	0	0.0	7	0.1	2	<0.1	1	<0.1	0	0.0	10	0.1
65 to <75 years	0	0.0	1	0.1	0	0.0	0	0.0	0	0.0	1	0.1
75+ years	0	0.0	4	0.7	0	0.0	0	0.0	0	0.0	4	0.7
<b>Total</b>	<b>0</b>	<b>0.0</b>	<b>15</b>	<b>0.1</b>	<b>2</b>	<b>&lt;0.1</b>	<b>2</b>	<b>&lt;0.1</b>	<b>0</b>	<b>0.0</b>	<b>19</b>	<b>0.1</b>

Source for tables 3A & 3B: Outbreak Response Toolkit (includes cases with positive respiratory specimens received on or before Dec 18, 2010).

Population data values used to calculate rates are for June 30, 2009 and are estimated using actual population values from the Alberta Health Care Insurance Plan (AHCIP) Registration File as of March 31, 2009.

For more information on data definitions and sources see [Annex: Data Notes section at the end of this report](#)

## SURVEILLANCE AND HEALTH STATUS ASSESSMENT

### Public Health Surveillance

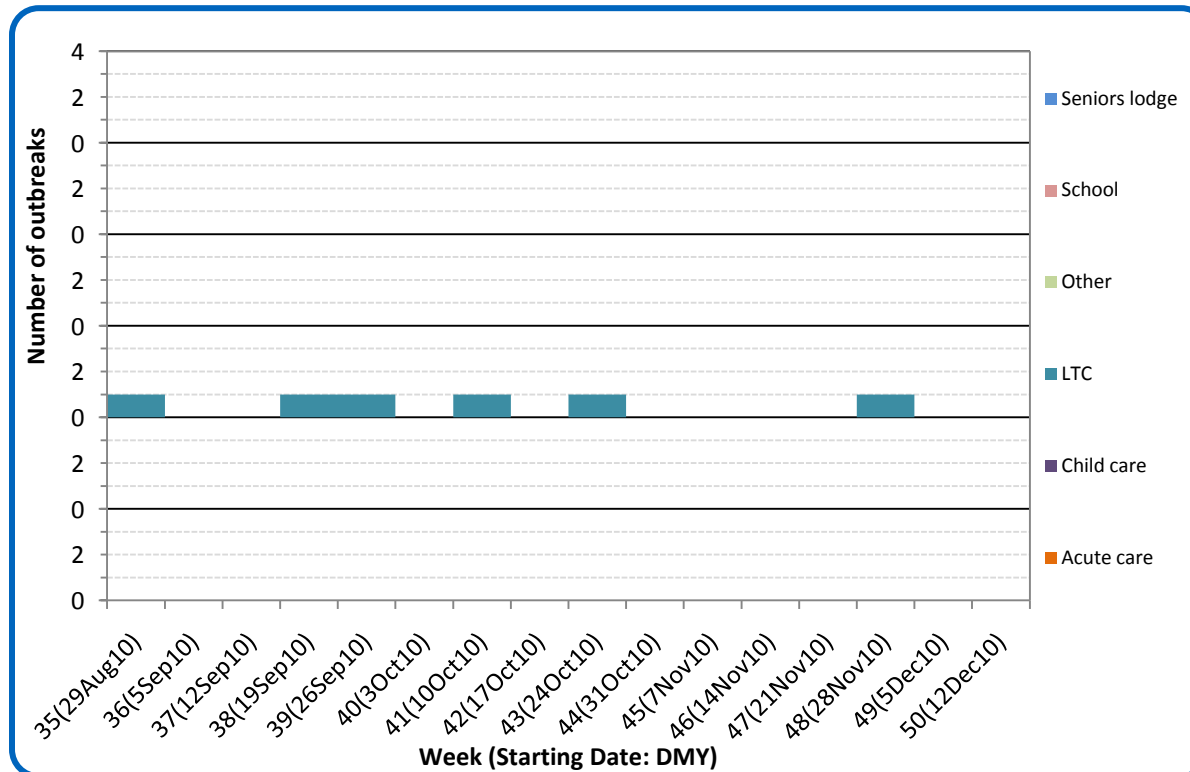
Report Date: December 21, 2010

An influenza report targeted to the general public is available at: <http://www.health.alberta.ca/health-info/influenza-evidence.html>

[Back to first page](#)

The causative agent for the outbreak in a long term care facility with an onset date of Dec 2, described in last week’s report, was confirmed as Influenza A (H3).

Figure 3D: Respiratory outbreaks, by facility type, by onset week, Calgary Zone (2010); school outbreaks may not have a laboratory confirmation



Source: Alberta Outbreak Reporting Form as of 23:59 on Dec 18, 2010.  
For more information on data definitions and sources see [Annex: Data Notes section at the end of this report](#)

SURVEILLANCE AND HEALTH STATUS ASSESSMENT

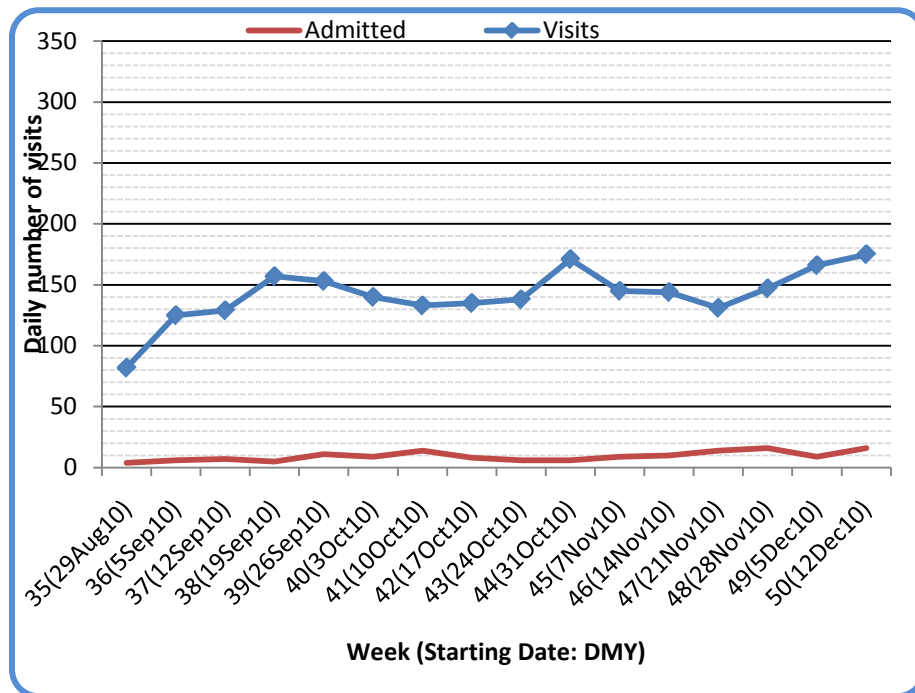
Public Health Surveillance  
Report Date: December 21, 2010

An influenza report targeted to the general public is available at: <http://www.health.alberta.ca/health-info/influenza-evidence.html>

[Back to first page](#)

The number of visits to emergency departments/urgent care centers by residents of the City of Calgary for symptoms with cough increased by 5% last week compared to the previous week. The increase was due primarily to an increased in the number of visits for infants (< 2 years of age), children (5-18 years of age) and people aged 65 years and older. For patients with cough symptoms, the number of hospital admissions increased by 78% over the same time period, and the number of patients who left EDs without being seen decreased by 40%.

**Figure 3E: Visits to urban emergency departments/urgent care centers in the City of Calgary with cough symptoms and admissions to hospitals, by visit week (2010)**



Source: Alberta Real Time Syndromic Surveillance Net (ARTSSN) as of 23:59 on Dec 18, 2010. For more information on data definitions and sources see [Annex: Data Notes section at the end of this report](#)

**SURVEILLANCE AND HEALTH STATUS ASSESSMENT**

**Public Health Surveillance**

Report Date: December 21, 2010

An influenza report targeted to the general public is available at: <http://www.health.alberta.ca/health-info/influenza-evidence.html>

[Back to first page](#)

### **Attack rates in respiratory outbreaks**

The recent Influenza A (H3) outbreak in a Calgary Zone long term care facility had an attack rate of 20%.

### **Influenza-like illness visits and “Left Without Being seen”**

The number of visits to urban emergency departments/ urgent care centers (EDs) for influenza-like illness (ILI) in the City of Calgary continues to maintain an upward trend and is now the highest it has been since late August. The number of hospital admissions for patients with ILI increased by 38% and the number of visits of patients with ILI who left EDs without being seen increased by 100% in Week 50 (Dec 12-18) compared to the previous week.

### **Respiratory related calls to Health Link Alberta**

The number of calls to Health Link Alberta for cough or breathing difficulties by residents of Calgary Zone was 15% higher in Week 50 than in Week 49. This represents a fairly sharp increase and brings it to its highest level this season. The increase is primarily due to calls for children under the age of 5 years. This increase in calls was consistent with the trend for emergency visits for cough symptoms.

### **Percentage of visits to sentinel offices with influenza-like illness (ILI)**

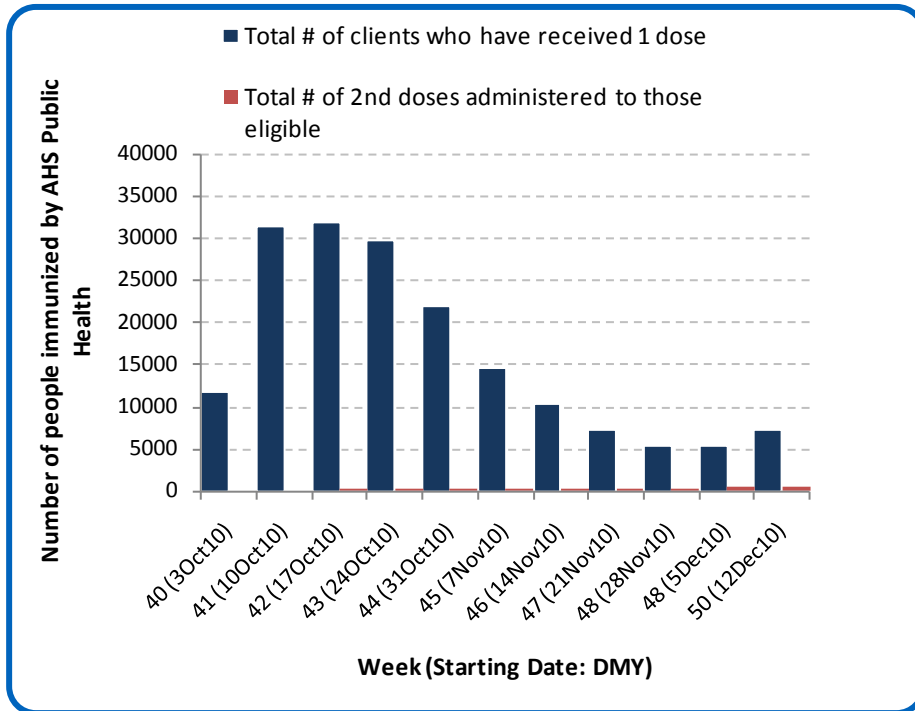
The percentage of ILI-related visits to sentinel physician offices by residents of Calgary Zone was 4X higher in Week 49 (Dec 5 - 11) than in Week 48.

### **Percentage of visits to sentinel offices with lower respiratory tract infection (LRTI)**

In contrast to the percentage of ILI-related visits, the percentage of LRTI-related visits to sentinel physician offices by residents of Calgary Zone was 18% lower in Week 49 (Dec 5-11) compared to the previous week.

[Back to first page](#)

Figure 3F: Number Immunized by AHS (Public Health), by week, Calgary Zone (2010)



Source: AHS Zones (doses do not include those delivered by external providers)  
 Note: Immunization coverage rates will be reported at the end of the influenza season  
 For more information on data definitions and sources see [Annex: Data Notes section at the end of this report](#)

**SURVEILLANCE AND HEALTH STATUS ASSESSMENT**

**Public Health Surveillance**

Report Date: December 21, 2010

An influenza report targeted to the general public is available at: <http://www.health.alberta.ca/health-info/influenza-evidence.html>

Table 3C: AHS (Public Health) Delivered Influenza Immunizations (with Cumulative totals), by priority group, Calgary Zone (2010)

[Back to first page](#)

Priority Group	Number Immunized (Week 50 – Dec 12-18, 2010)	Cumulative Number Immunized (since Oct 3, 2010)
Long term care staff	4	440
Health care workers	110	5,172
Pregnant women	113	1,725
Residents of long term care	2	705
65 years of age and over	806	44,267
All children 6 months up to and including 23 months*	Dose #1	8,942
	Dose #2	1,619
All children 24 months up to and including 59 months*	Dose #1	9,752
	Dose #2	289
High risk: 5 years up to and including 8 years*	Dose #1	2,125
	Dose #2	27
High risk: 9 years up to and including 64 years	796	19,306
Healthy: 5 years up to and including 8 years*	Dose #1	6,553
	Dose #2	145
Healthy: 9 years up to and including 64 years	3,654	78,098
<b>Total number of clients who have received 1 dose</b>	<b>7,194</b>	<b>177,085</b>
<b>Total number of 2nd doses administered to those eligible*</b>	<b>481</b>	<b>2,080</b>

Source: AHS Zones (doses do not include those delivered by external providers)

\*Children under 9 years of age who have not received at least one dose of seasonal influenza vaccine in past years require two doses, given at least four weeks apart.

Note: Immunization coverage rates will be reported at the end of the influenza season

For more information on data definitions and sources see [Annex: Data Notes section at the end of this report](#)

## SURVEILLANCE AND HEALTH STATUS ASSESSMENT

### Public Health Surveillance

Report Date: December 21, 2010

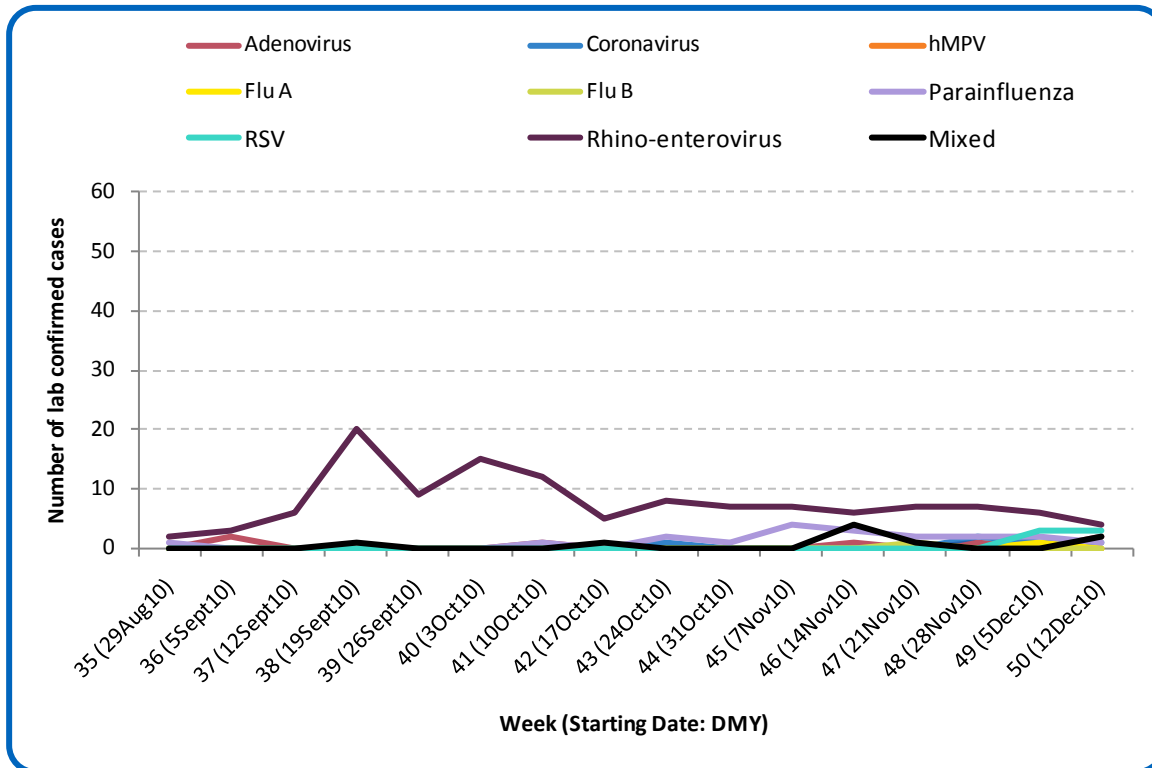
An influenza report targeted to the general public is available at: <http://www.health.alberta.ca/health-info/influenza-evidence.html>

SECTION 4: ZONE 3 - CENTRAL

[Back to first page](#)

No new cases of influenza were confirmed in Central Zone last week. Since the beginning of the season, a total of two cases have been confirmed in Central Zone (including the provinces only confirmed case of influenza type B, which occurred in late November).

Figure 4A: Laboratory confirmed respiratory virus cases, by virus type, by week, Central Zone (2010)



Sources: DIAL – Provincial Laboratory and the Outbreak Response Toolkit (includes cases with positive respiratory specimens received on or before Dec 18, 2010). For more information on data definitions and sources see [Annex: Data Notes section at the end of this report](#)

SURVEILLANCE AND HEALTH STATUS ASSESSMENT

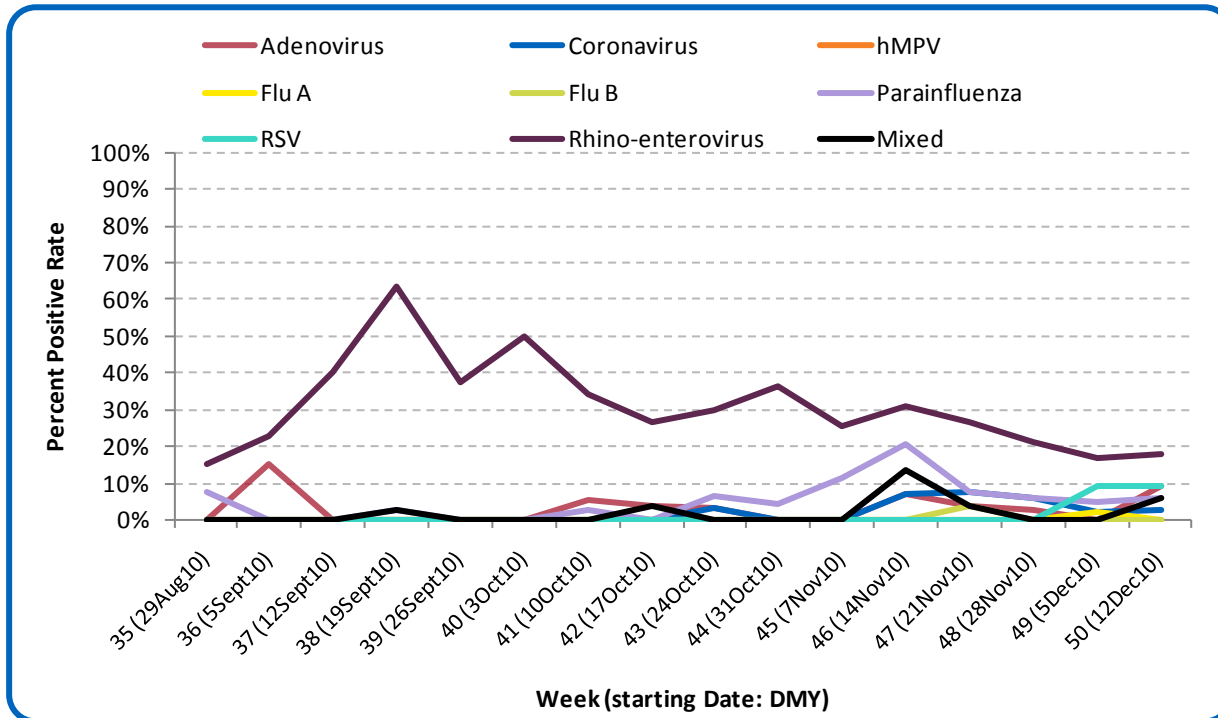
Public Health Surveillance

Report Date: December 21, 2010

An influenza report targeted to the general public is available at: <http://www.health.alberta.ca/health-info/influenza-evidence.html>

Figure 4B: Respiratory Specimen Percent Positive Rates, by virus type, by week, Central Zone (2010)

[Back to first page](#)



Source: DIAL – Provincial Laboratory (includes cases with positive respiratory specimens received on or before Dec 18, 2010)  
For more information on data definitions and sources see [Annex: Data Notes section at the end of this report](#)

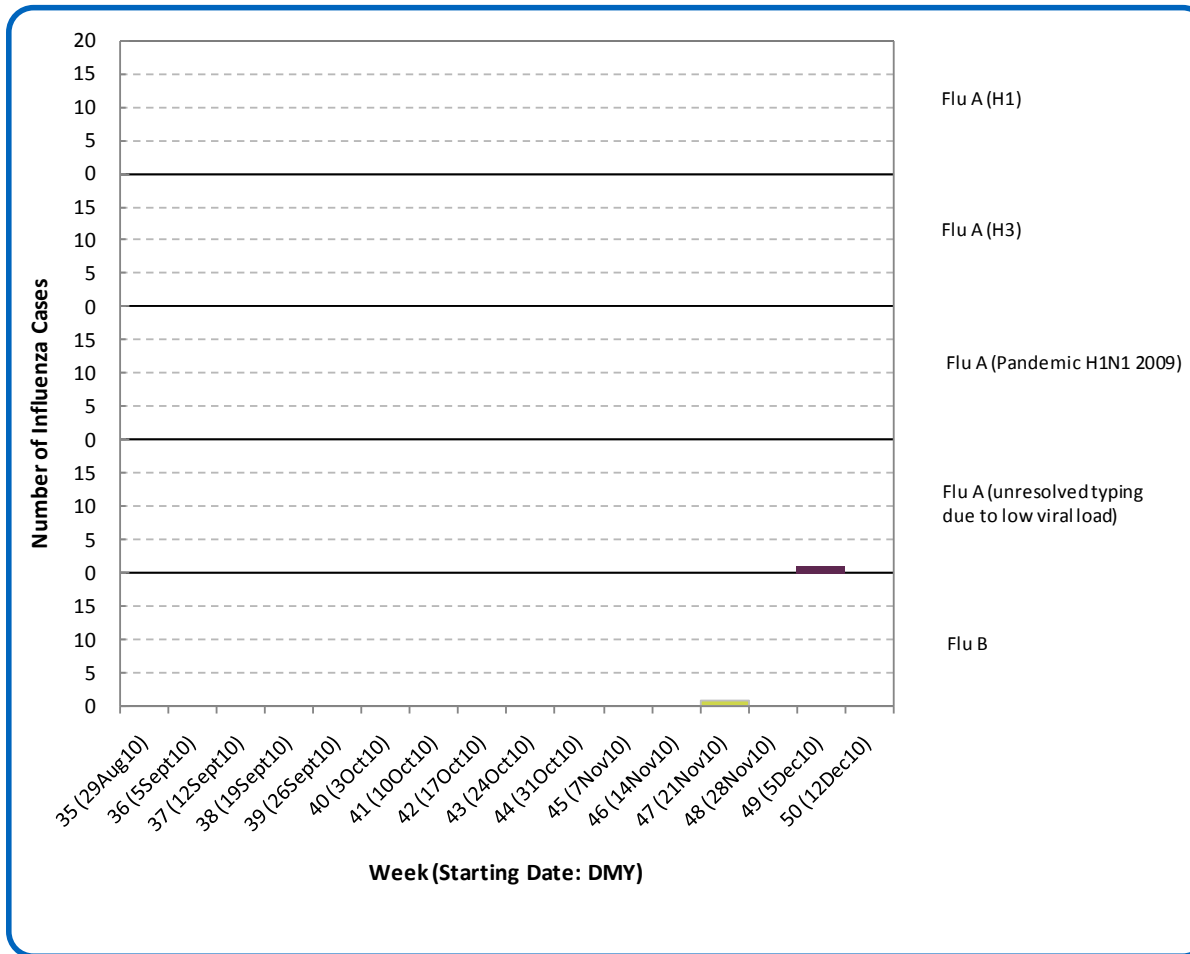
SURVEILLANCE AND HEALTH STATUS ASSESSMENT

Public Health Surveillance

Report Date: December 21, 2010

An influenza report targeted to the general public is available at: <http://www.health.alberta.ca/health-info/influenza-evidence.html>

Figure 4C: Laboratory confirmed Influenza cases, by subtype, by week specimen received, Central Zone (2010)



Source: Outbreak Response Toolkit (includes cases with positive respiratory specimens received on or before Dec 18, 2010). For more information on data definitions and sources see [Annex: Data Notes section at the end of this report](#)

SURVEILLANCE AND HEALTH STATUS ASSESSMENT

Public Health Surveillance  
Report Date: December 21, 2010

An influenza report targeted to the general public is available at: <http://www.health.alberta.ca/health-info/influenza-evidence.html>

[Back to first page](#)

**Table 4A: Cumulative Influenza cases (and age specific rates), by subtype, by age group, Central Zone (Aug 29 – Dec 18, 2010)**

	Flu A (Seasonal-H1)		Flu A (Seasonal-H3)		Flu A (Pandemic H1N1 2009)		Flu A (unresolved typing due to low viral load)		Flu B		Total	
	#	Rate (per 10,000)	#	Rate (per 10,000)	#	Rate (per 10,000)	#	Rate (per 10,000)	#	Rate (per 10,000)	#	Rate (per 10,000)
0 to <2 years	0	0.0	0	0.0	0	0.0	0	0.0	0	0.0	0	0.0
2 to <5 years	0	0.0	0	0.0	0	0.0	0	0.0	0	0.0	0	0.0
5 to <9 years	0	0.0	0	0.0	0	0.0	0	0.0	0	0.0	0	0.0
9 to <18 years	0	0.0	0	0.0	0	0.0	0	0.0	0	0.0	0	0.0
18 to <65 years	0	0.0	0	0.0	0	0.0	1	0.0	1	<0.1	2	<0.1
65 to <75 years	0	0.0	0	0.0	0	0.0	0	0.0	0	0.0	0	0.0
75+ years	0	0.0	0	0.0	0	0.0	0	0.0	0	0.0	0	0.0
<b>Total</b>	0	0.0	0	0.0	0	0.0	1	0.0	1	<0.1	2	<0.1

Source: Outbreak Response Toolkit (includes cases with positive respiratory specimens received on or before *Dec 18, 2010*).

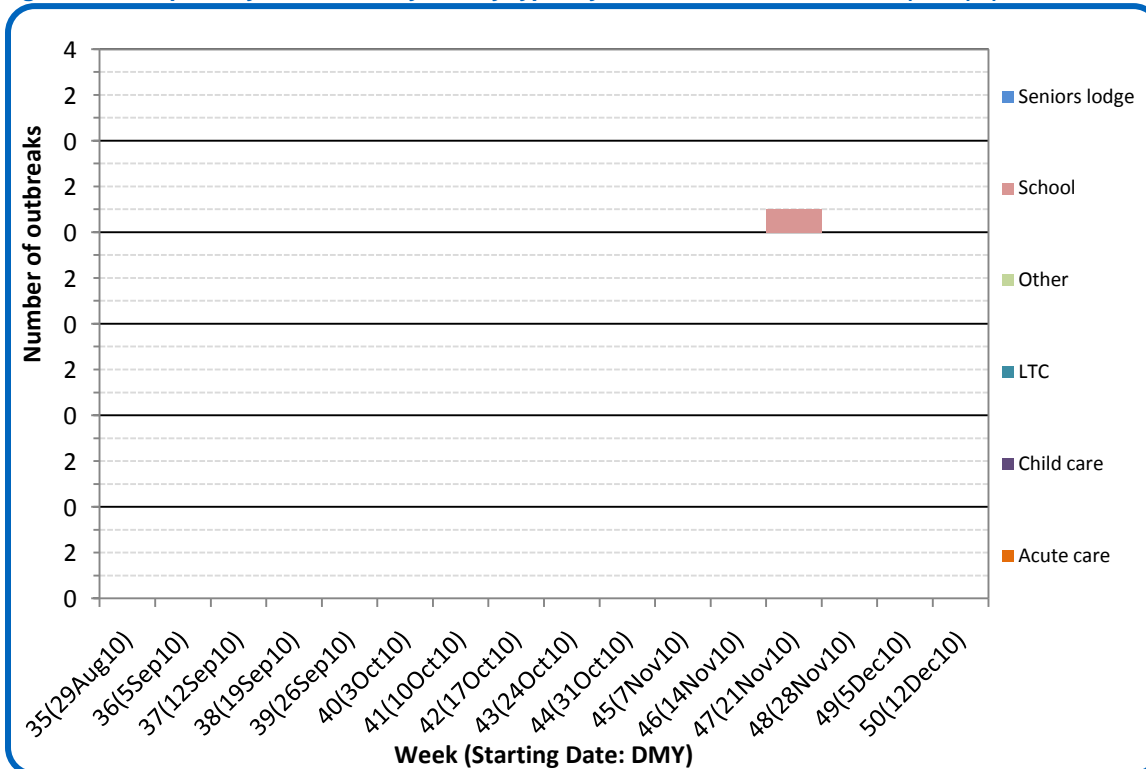
Population data values used to calculate rates are for June 30, 2009 and are estimated using actual population values from the Alberta Health Care Insurance Plan (AHCIP) Registration File as of March 31, 2009.

For more information on data definitions and sources see [Annex: Data Notes section at the end of this report](#)

[Back to first page](#)

No new respiratory outbreaks have been reported in Central Zone since the week of Nov 21.

Figure 4D: Respiratory outbreaks, by facility type, by onset week, Central Zone (2010); (school outbreaks may not have a laboratory confirmation)



Source: Alberta Outbreak Reporting Form as of 23:59 on Dec 18, 2010.  
For more information on data definitions and sources see Annex: Data Notes section at the end of this report

SURVEILLANCE AND HEALTH STATUS ASSESSMENT

Public Health Surveillance  
Report Date: December 21, 2010

An influenza report targeted to the general public is available at: <http://www.health.alberta.ca/health-info/influenza-evidence.html>

[Back to first page](#)

### **Attack Rates in respiratory outbreaks**

No new respiratory outbreaks have been reported in Central Zone since Week 47 (Nov 21 – 27).

### **Influenza-like illness visits and “Left Without Being seen”**

There are no data available from this zone.

### **Respiratory related calls to Health Link Alberta**

The number of calls to Health Link Alberta by residents of Central Zone for cough or breathing difficulties was 39% higher last week compared to the previous week, making it the highest it has been this season. This increase is due primarily to calls for children aged 2 to less than 5 years.

### **Percentage of visits to sentinel offices with Influenza-like illness (ILI)**

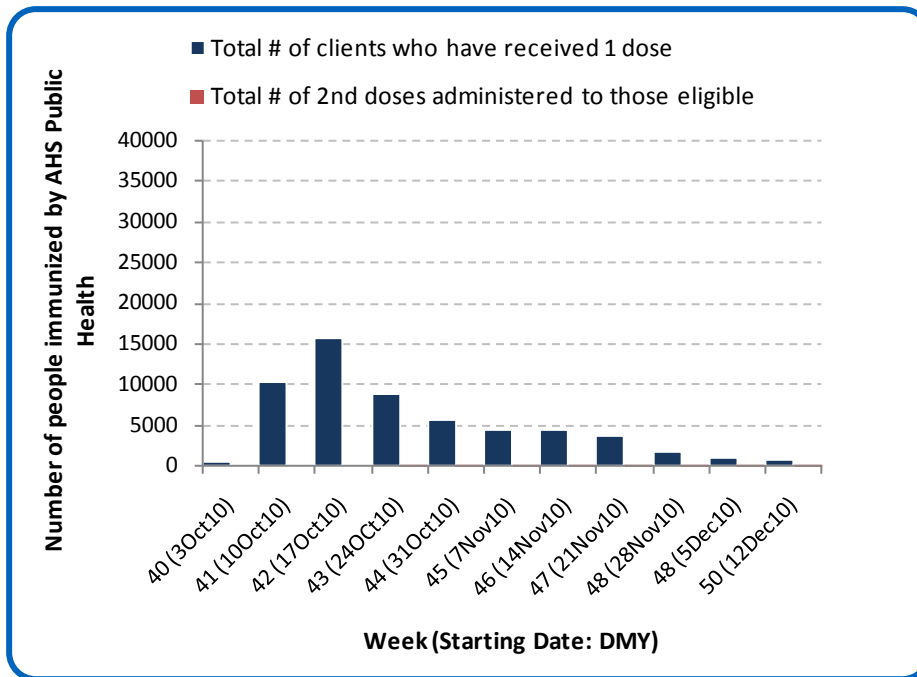
There were no reports of ILI-related visits to sentinel physician offices by residents of Central Zone in Week 49 (Dec 5-11).

### **Percentage of visits to sentinel offices with lower respiratory tract infection (LTRI)**

The percentage of LTRI-related visits to sentinel physician offices by residents of Central Zone was 11% higher in Week 49 than in Week 48, but was still less than half of that in Week 47.

[Back to first page](#)

Figure 4E: Number Immunized by AHS (Public Health), by week, Central Zone (2010)



Source: AHS Zones (doses do not include those delivered by external providers)  
 Note: Immunization coverage rates will be reported at the end of the influenza season  
 For more information on data definitions and sources see [Annex: Data Notes section at the end of this report](#)

[Back to first page](#)

Table 4B: AHS (Public Health) Delivered Influenza Immunizations (with Cumulative totals), by priority group, Central Zone (2010)

Priority Group	Number Immunized (Week 50 – Dec 12-18, 2010)	Cumulative Number Immunized (since Oct 3, 2010)
Long term care staff	8	363
Health care workers	22	2,394
Pregnant women	10	388
Residents of long term care	3	995
65 years of age and over	128	21,304
All children 6 months up to and including 23 months*	Dose #1	78
	Dose #2	101
All children 24 months up to and including 59 months*	Dose #1	45
	Dose #2	25
High risk: 5 years up to and including 8 years*	Dose #1	12
	Dose #2	5
High risk: 9 years up to and including 64 years	84	6,435
Healthy: 5 years up to and including 8 years*	Dose #1	20
	Dose #2	9
Healthy: 9 years up to and including 64 years	289	19,465
<b>Total number of clients who have received 1 dose</b>	<b>699</b>	<b>57,359</b>
<b>Total number of 2nd doses administered to those eligible*</b>	<b>140</b>	<b>593</b>

Source: AHS Zones (doses do not include those delivered by external providers)

\*Children under 9 years of age who have not received at least one dose of seasonal influenza vaccine in past years require two doses, given at least four weeks apart.

Note: Immunization coverage rates will be reported at the end of the influenza season

For more information on data definitions and sources see [Annex: Data Notes section at the end of this report](#)

## SURVEILLANCE AND HEALTH STATUS ASSESSMENT

### Public Health Surveillance

Report Date: December 21, 2010

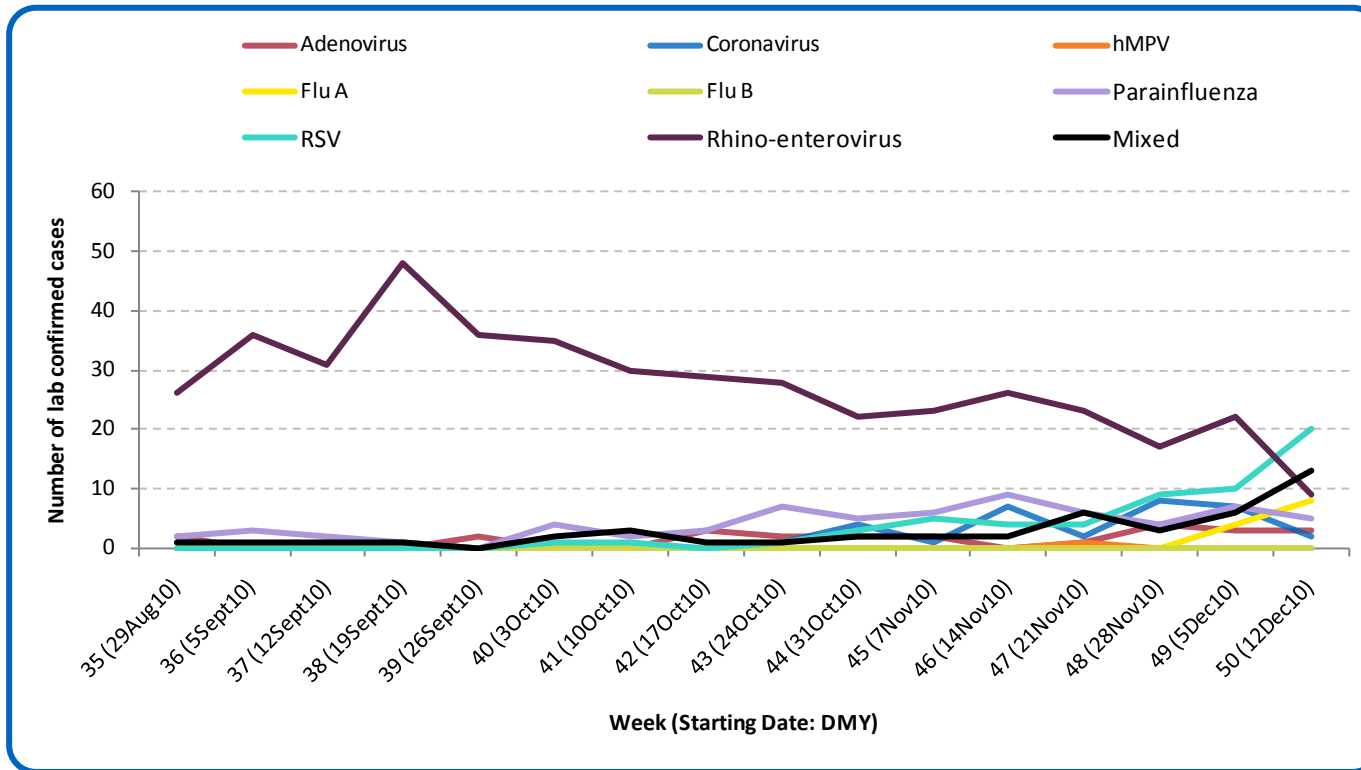
An influenza report targeted to the general public is available at: <http://www.health.alberta.ca/health-info/influenza-evidence.html>

SECTION 5: ZONE 4 – EDMONTON

[Back to first page](#)

RSV is now the predominant respiratory virus circulating in the Edmonton Zone, with most laboratory confirmed cases occurring in infants two years of age and under. In addition, there were eight new cases of influenza A (H3) confirmed last week; including two in children under the age of five years, three in adults aged 18 to less than 65 years of age, and three in adults aged 65 or over.

Figure 5A: Laboratory confirmed respiratory virus cases, by virus type, by week, Edmonton Zone (2010)



Sources: DIAL – Provincial Laboratory and the Outbreak Response Toolkit (includes cases with positive respiratory specimens received on or before Dec 18, 2010). For more information on data definitions and sources see [Annex: Data Notes section at the end of this report](#)

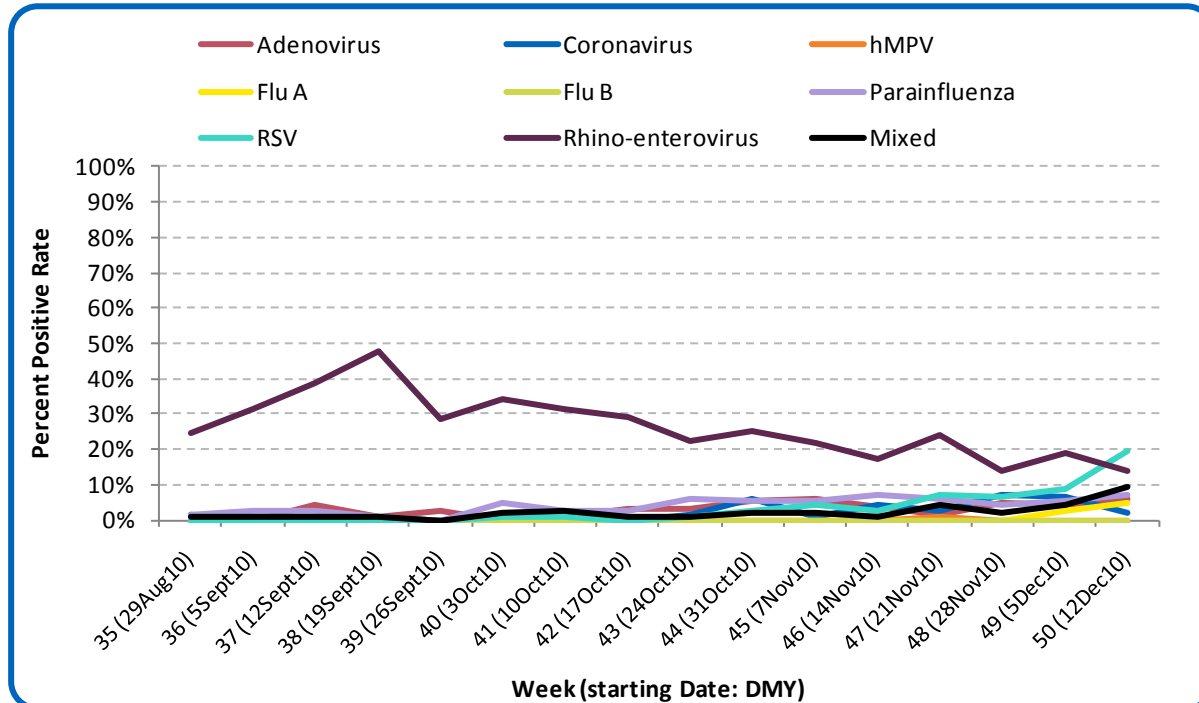
SURVEILLANCE AND HEALTH STATUS ASSESSMENT

Public Health Surveillance  
Report Date: December 21, 2010

An influenza report targeted to the general public is available at: <http://www.health.alberta.ca/health-info/influenza-evidence.html>

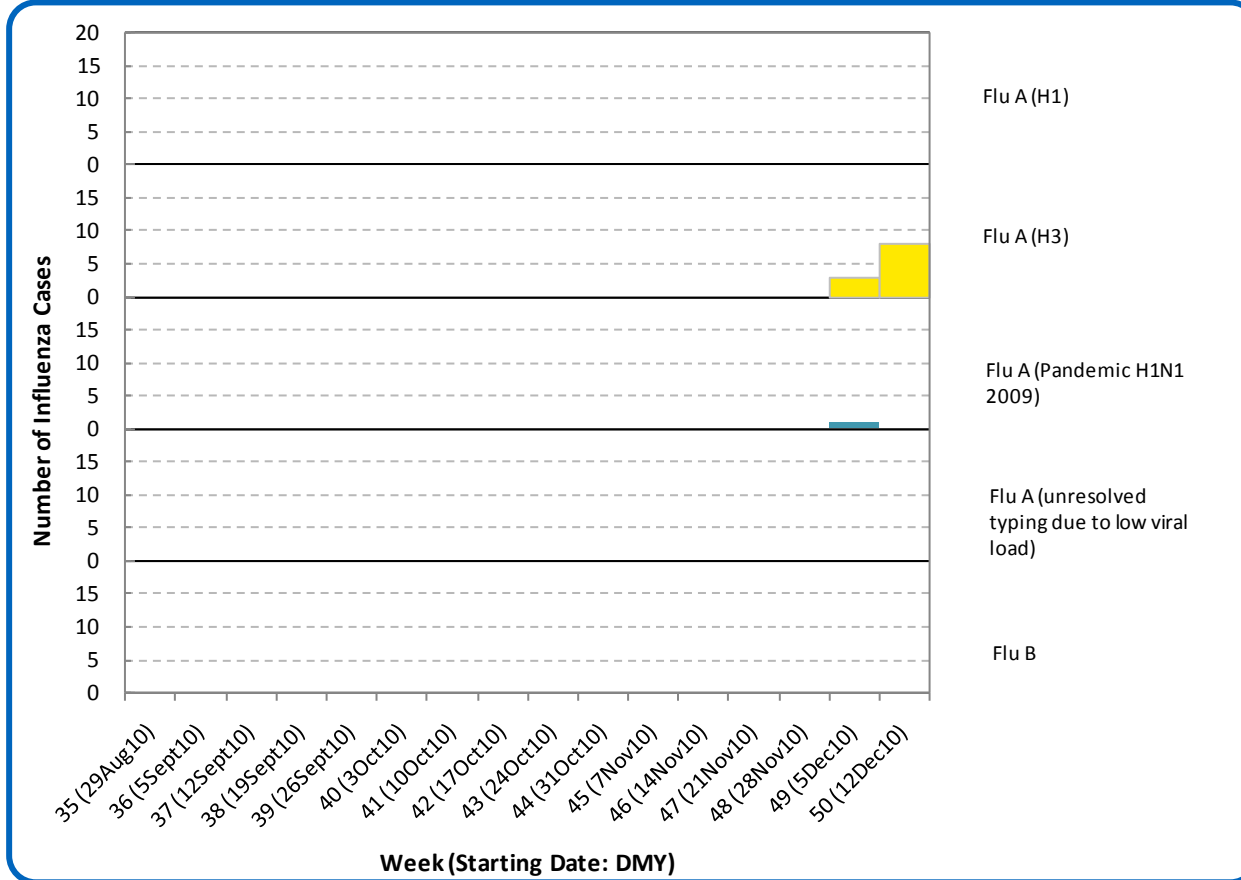
[Back to first page](#)

Figure 5B: Respiratory Specimen Percent Positive Rates, by virus type, by week, Edmonton Zone (2010)



Source: DIAL – Provincial Laboratory (includes cases with positive respiratory specimens received on or before Dec 18, 2010)  
For more information on data definitions and sources see [Annex: Data Notes section at the end of this report](#)

Figure 5C: Laboratory confirmed Influenza cases, by subtype, by week specimen received, Edmonton Zone (2010)



Source: Outbreak Response Toolkit (includes cases with positive respiratory specimens received on or before Dec 18, 2010). For more information on data definitions and sources see [Annex: Data Notes section at the end of this report](#)

SURVEILLANCE AND HEALTH STATUS ASSESSMENT

Public Health Surveillance

Report Date: December 21, 2010

An influenza report targeted to the general public is available at: <http://www.health.alberta.ca/health-info/influenza-evidence.html>

[Back to first page](#)

**Table 5A: New Influenza cases (and age specific rates), by subtype, by age group, Edmonton Zone (Week 49: Dec 5-11, 2010)**

	Flu A (Seasonal-H1)		Flu A (Seasonal-H3)		Flu A (Pandemic H1N1 2009)		Flu A (unresolved typing due to low viral load)		Flu B		Total	
	#	Rate (per 10,000)	#	Rate (per 10,000)	#	Rate (per 10,000)	#	Rate (per 10,000)	#	Rate (per 10,000)	#	Rate (per 10,000)
0 to <2 years	0	0.0	1	0.3	0	0.0	0	0.0	0	0.0	1	0.3
2 to <5 years	0	0.0	1	0.2	0	0.0	0	0.0	0	0.0	1	0.2
5 to <9 years	0	0.0	0	0.0	0	0.0	0	0.0	0	0.0	0	0.0
9 to <18 years	0	0.0	0	0.0	0	0.0	0	0.0	0	0.0	0	0.0
18 to <65 years	0	0.0	3	<0.1	0	0.0	0	0.0	0	0.0	3	<0.1
65 to <75 years	0	0.0	1	0.1	0	0.0	0	0.0	0	0.0	1	0.1
75+ years	0	0.0	2	0.3	0	0.0	0	0.0	0	0.0	2	0.3
<b>Total</b>	<b>0</b>	<b>0.0</b>	<b>8</b>	<b>0.1</b>	<b>0</b>	<b>0.0</b>	<b>0</b>	<b>0.0</b>	<b>0</b>	<b>0.0</b>	<b>8</b>	<b>0.1</b>

**Table 5B: Cumulative Influenza cases (and age specific rates), by subtype, by age group, Edmonton Zone (Aug 29 – Dec 18, 2010)**

	Flu A (Seasonal-H1)		Flu A (Seasonal-H3)		Flu A (Pandemic H1N1 2009)		Flu A (unresolved typing due to low viral load)		Flu B		Total	
	#	Rate (per 10,000)	#	Rate (per 10,000)	#	Rate (per 10,000)	#	Rate (per 10,000)	#	Rate (per 10,000)	#	Rate (per 10,000)
0 to <2 years	0	0.0	2	0.7	0	0.0	0	0.0	0	0.0	2	0.7
2 to <5 years	0	0.0	1	0.2	0	0.0	0	0.0	0	0.0	1	0.2
5 to <9 years	0	0.0	1	0.2	0	0.0	0	0.0	0	0.0	1	0.2
9 to <18 years	0	0.0	0	0.0	0	0.0	0	0.0	0	0.0	0	0.0
18 to <65 years	0	0.0	4	0.1	1	<0.1	0	0.0	0	0.0	5	0.1
65 to <75 years	0	0.0	1	0.1	0	0.0	0	0.0	0	0.0	1	0.1
75+ years	0	0.0	2	0.3	0	0.0	0	0.0	0	0.0	2	0.3
<b>Total</b>	<b>0</b>	<b>0.0</b>	<b>11</b>	<b>0.1</b>	<b>1</b>	<b>&lt;0.1</b>	<b>0</b>	<b>0.0</b>	<b>0</b>	<b>0.0</b>	<b>12</b>	<b>0.1</b>

Source for tables 5A & 5B: Outbreak Response Toolkit (includes cases with positive respiratory specimens received on or before Dec 18, 2010). Population data values used to calculate rates are for June 30, 2009 and are estimated using actual population values from the Alberta Health Care Insurance Plan (AHCIP) Registration File as of March 31, 2009. For more information on data definitions and sources see [Annex: Data Notes section at the end of this report](#)

**SURVEILLANCE AND HEALTH STATUS ASSESSMENT**

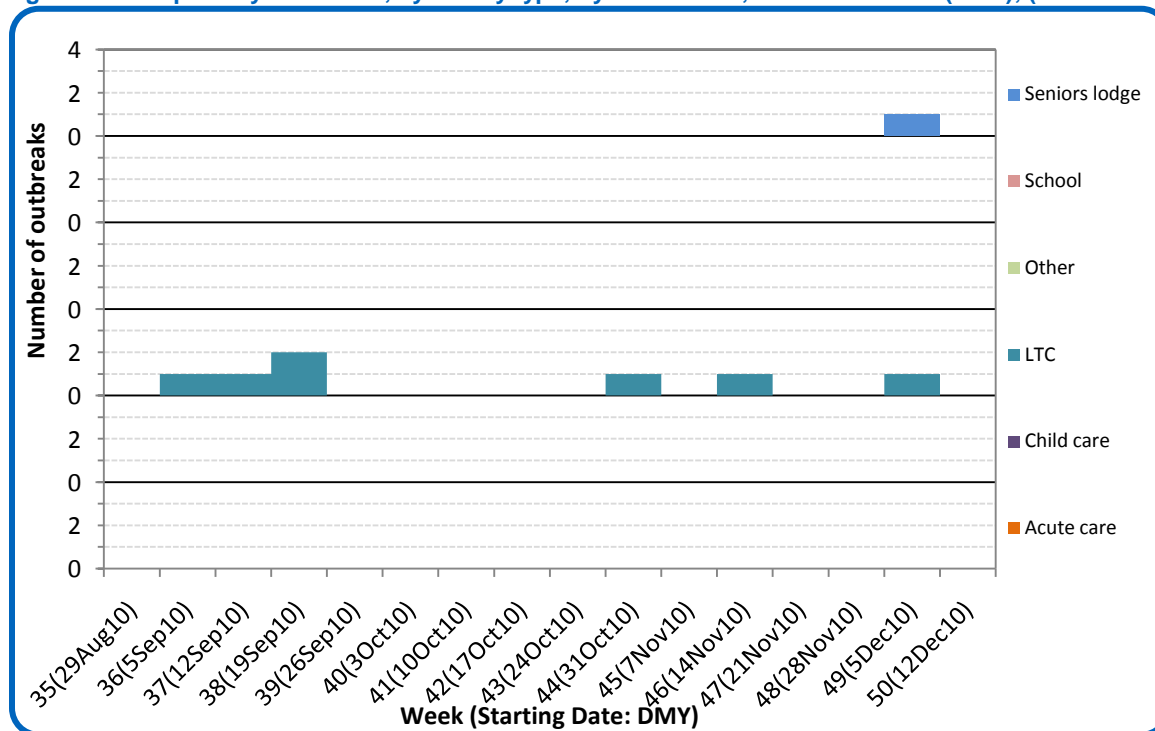
**Public Health Surveillance**  
Report Date: December 21, 2010

An influenza report targeted to the general public is available at: <http://www.health.alberta.ca/health-info/influenza-evidence.html>

[Back to first page](#)

Two laboratory confirmed respiratory outbreaks were reported in Edmonton Zone the week of Dec 5. One occurred in a seniors' lodge and was caused by coronavirus; the other occurred in a long term care facility and was caused by Influenza A (H3). This is the first laboratory confirmed influenza outbreak reported in Edmonton Zone this season. Another outbreak in a daycare facility, with an onset date of Dec 14, is pending laboratory confirmation.

Figure 5D: Respiratory outbreaks, by facility type, by onset week, Edmonton Zone (2010); (school outbreaks may not have a laboratory confirmation)



Source: Alberta Outbreak Reporting Form as of 23:59 on Dec 18, 2010.  
For more information on data definitions and sources see [Annex: Data Notes section at the end of this report](#)

SURVEILLANCE AND HEALTH STATUS ASSESSMENT

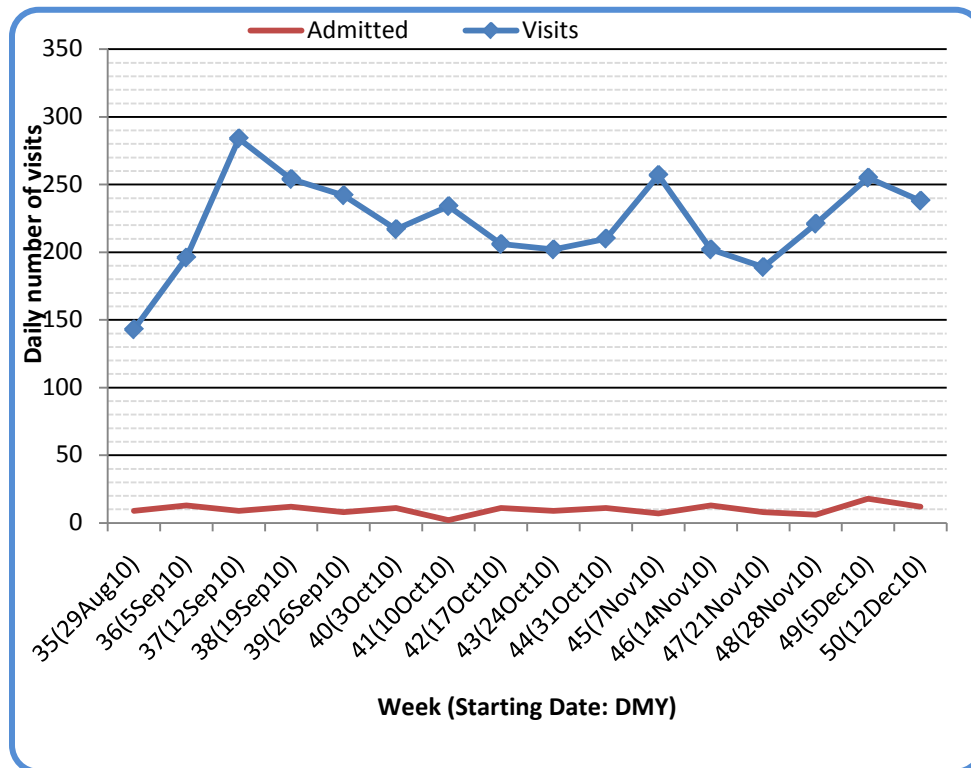
Public Health Surveillance  
Report Date: December 21, 2010

An influenza report targeted to the general public is available at: <http://www.health.alberta.ca/health-info/influenza-evidence.html>

[Back to first page](#)

The number of visits to nine emergency departments/urgent care centers, hospital admissions, and visits of patients who left the EDs without being seen for cough/congestion all decreased in Week 50 (Dec 12-18) compared to the previous week.

Figure 5E: Visits to emergency departments/urgent care centers for cough/congestion and admissions to hospitals, by visit week, Edmonton Zone (2010)



Source: Alberta Real Time Syndromic Surveillance (ARTSSN) as of 23:59 on Dec 18, 2010.  
For more information on data definitions and sources see [Annex: Data Notes section at the end of this report](#)

**SURVEILLANCE AND HEALTH STATUS ASSESSMENT**

**Public Health Surveillance**  
Report Date: December 21, 2010

An influenza report targeted to the general public is available at: <http://www.health.alberta.ca/health-info/influenza-evidence.html>

[Back to first page](#)

### Attack rates in respiratory outbreaks

The coronavirus outbreak and the influenza outbreak that occurred in Edmonton Zone in Week 49 (Dec 5 -11) had attack rates of 7.5% and 11.8%, respectively. The outbreak in the daycare facility that is pending laboratory confirmation had a preliminary attack rate of 23%.

### Influenza-like illness visits and “Left Without Being seen”

The number of ILI-related visits to emergency departments/urgent care centers was 19% higher in Week 50 (Dec 12-18) than in Week 49, pushing its rate to a new high this season. The number of hospital admissions in Week 50 was 68% higher than in the previous week, but still similar to that in Weeks 47 and 48. The number of visits to ED’s for people with ILI that left without being seen was 50% lower in Week 50 than in Week 49.

### Respiratory related calls to Health Link Alberta

The number of calls to Health Link Alberta by residents of Edmonton Zone for cough or breathing difficulties was 50% higher in Week 50 (Dec 12-18) than in Week 49. This is the highest it has been this season. The increase was due primarily calls for children under the age of 5 years.

### Percentage of visits to sentinel offices with influenza-like illness (ILI)

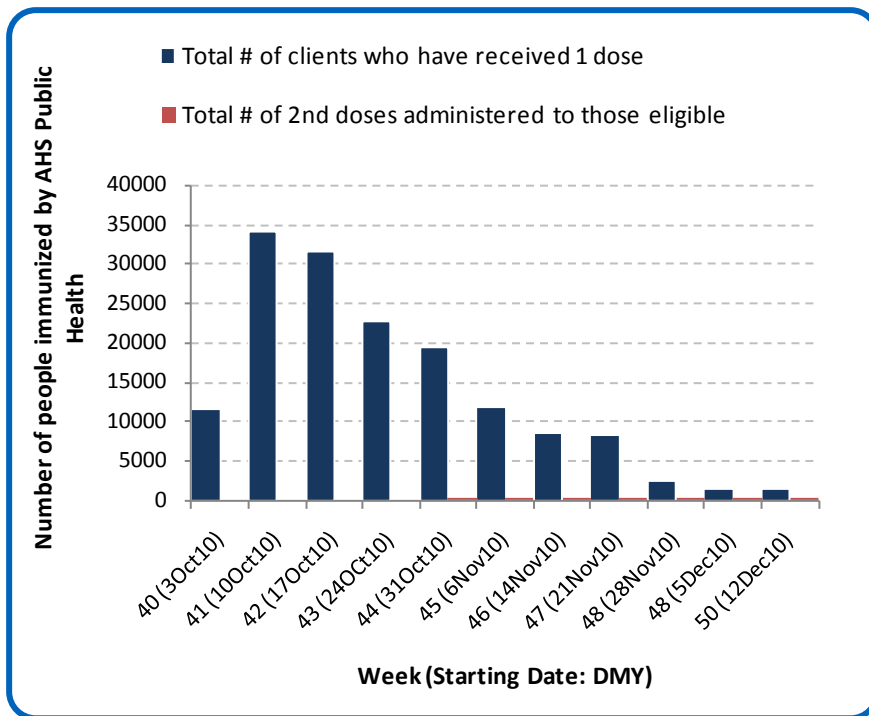
The percentage of ILI-related visits to sentinel physician offices by residents of Edmonton Zone was 36% lower in Week 49 (Dec 5-11) than in Week 48.

### Percentage of visits to sentinel offices with lower respiratory tract infection (LRTI)

The percentage of LRTI-related visits to sentinel physician offices by residents of Edmonton Zone was 83% higher in Week 49 (Dec 5-11) than in Week 48, reaching its highest level so far this season.

[Back to first page](#)

Figure 5F: Number Immunized by AHS (Public Health), by week, Edmonton Zone (2010)



Source: AHS Zones (doses do not include those delivered by external providers)  
 Note: Immunization coverage rates will be reported at the end of the influenza season  
 For more information on data definitions and sources see [Annex: Data Notes section at the end of this report](#)

**SURVEILLANCE AND HEALTH STATUS ASSESSMENT**

**Public Health Surveillance**

Report Date: December 21, 2010

An influenza report targeted to the general public is available at: <http://www.health.alberta.ca/health-info/influenza-evidence.html>

[Back to first page](#)

**Table 5C: AHS (Public Health) Delivered Influenza Immunizations (with Cumulative totals), by priority group, Edmonton Zone (2010)**

Priority Group	Number Immunized (Week 50 – Dec 12-18, 2010)	Cumulative Number Immunized (since Oct 3, 2010)
Long term care staff	3	313
Health care workers	20	4,642
Pregnant women	43	1,305
Residents of long term care	0	1,030
65 years of age and over	151	47,811
All children 6 months up to and including 23 months*	Dose #1	248
	Dose #2	187
All children 24 months up to and including 59 months*	Dose #1	136
	Dose #2	38
High risk: 5 years up to and including 8 years*	Dose #1	22
	Dose #2	7
High risk: 9 years up to and including 64 years	161	16,562
Healthy: 5 years up to and including 8 years*	Dose #1	101
	Dose #2	11
Healthy: 9 years up to and including 64 years	657	64,324
<b>Total number of clients who have received 1 dose</b>	<b>1,542</b>	<b>154,077</b>
<b>Total number of 2nd doses administered to those eligible*</b>	<b>243</b>	<b>1,511</b>

Source: AHS Zones (doses do not include those delivered by external providers)

\*Children under 9 years of age who have not received at least one dose of seasonal influenza vaccine in past years require two doses, given at least four weeks apart.

Note: Immunization coverage rates will be reported at the end of the influenza season

For more information on data definitions and sources see [Annex: Data Notes section at the end of this report](#)

**SURVEILLANCE AND HEALTH STATUS ASSESSMENT**

**Public Health Surveillance**

Report Date: December 21, 2010

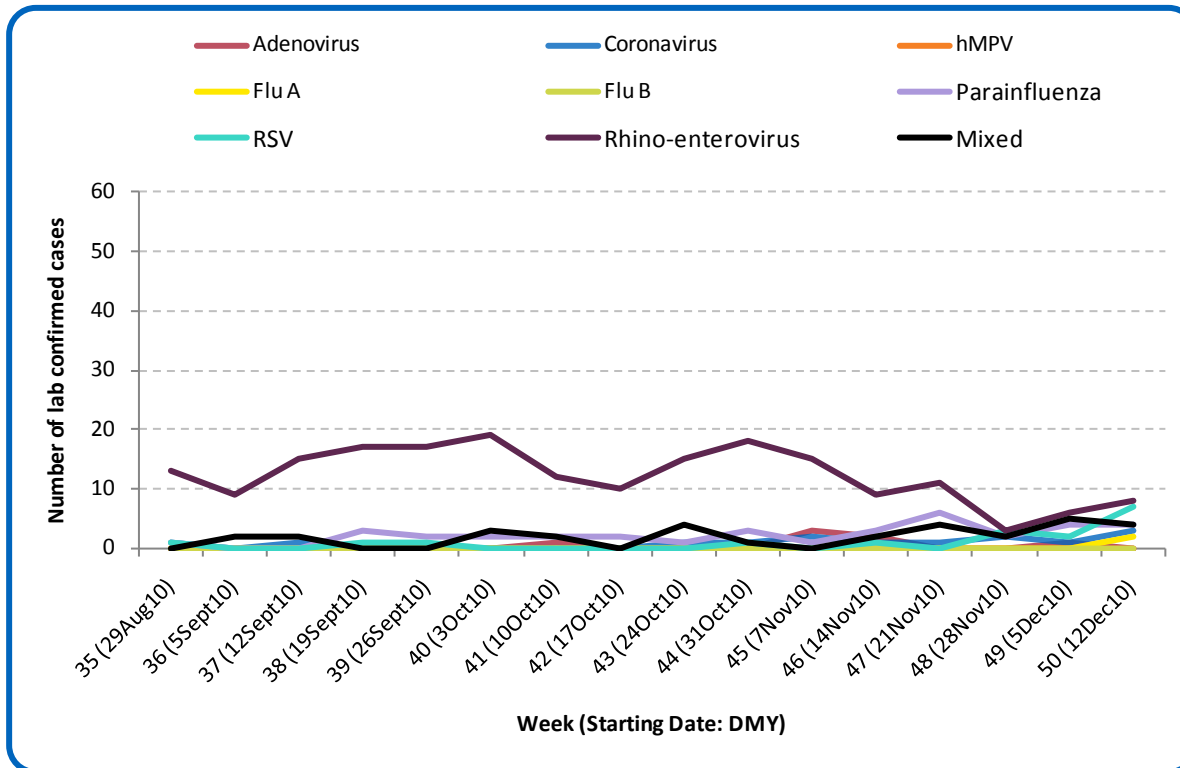
An influenza report targeted to the general public is available at: <http://www.health.alberta.ca/health-info/influenza-evidence.html>

SECTION 6: ZONE 5 – NORTH

[Back to first page](#)

Last week, in North Zone, one case of influenza A (H1N1) 2009 was confirmed in an infant under the age of two years and one case of influenza A (H3) was confirmed in a child aged nine to less than 18 years. These are the first cases of influenza to be confirmed in this Zone this season.

Figure 6A: Laboratory confirmed respiratory virus cases, by virus type, by week, North Zone (2010)



Sources: DIAL – Provincial Laboratory and the Outbreak Response Toolkit (includes cases with positive respiratory specimens received on or before Dec 18, 2010). For more information on data definitions and sources see [Annex: Data Notes section at the end of this report](#)

SURVEILLANCE AND HEALTH STATUS ASSESSMENT

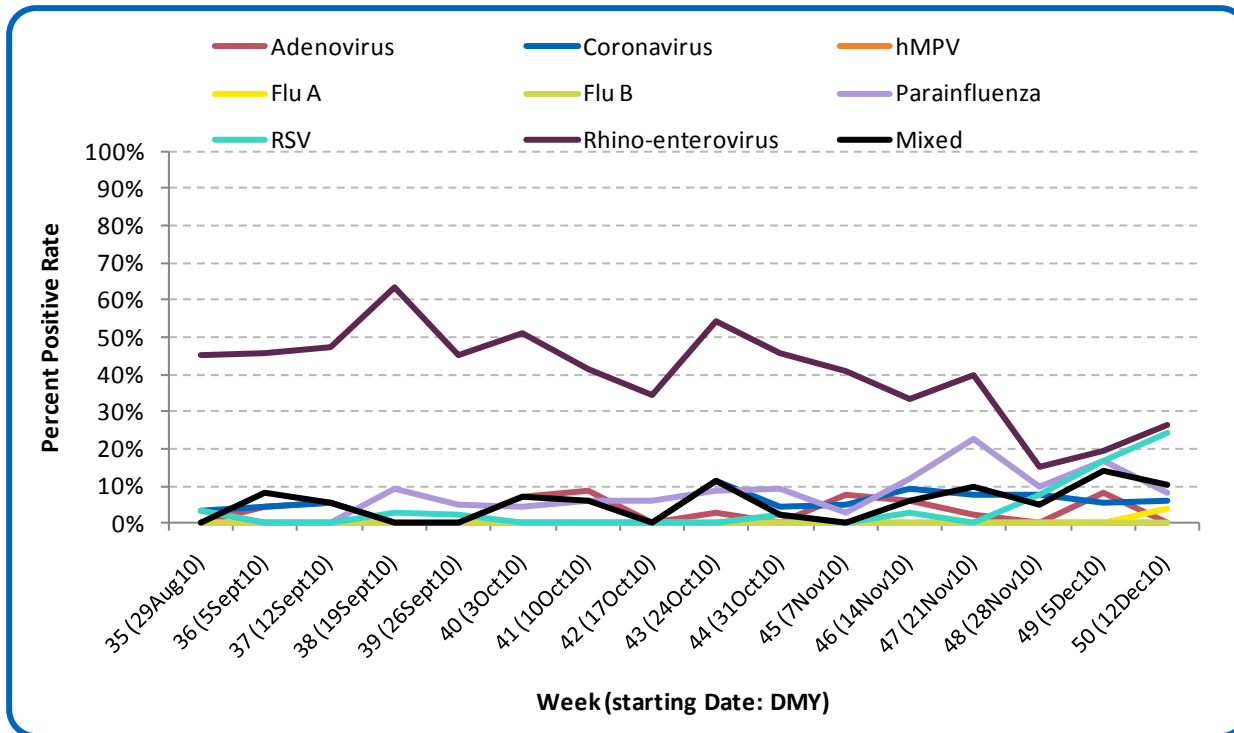
Public Health Surveillance

Report Date: December 21, 2010

An influenza report targeted to the general public is available at: <http://www.health.alberta.ca/health-info/influenza-evidence.html>

[Back to first page](#)

Figure 6B: Respiratory Specimen Percent Positive Rates, by virus type, by week, North Zone (2010)



Source: DIAL – Provincial Laboratory (includes cases with positive respiratory specimens received on or before Dec 18, 2010)  
For more information on data definitions and sources see [Annex: Data Notes section at the end of this report](#)

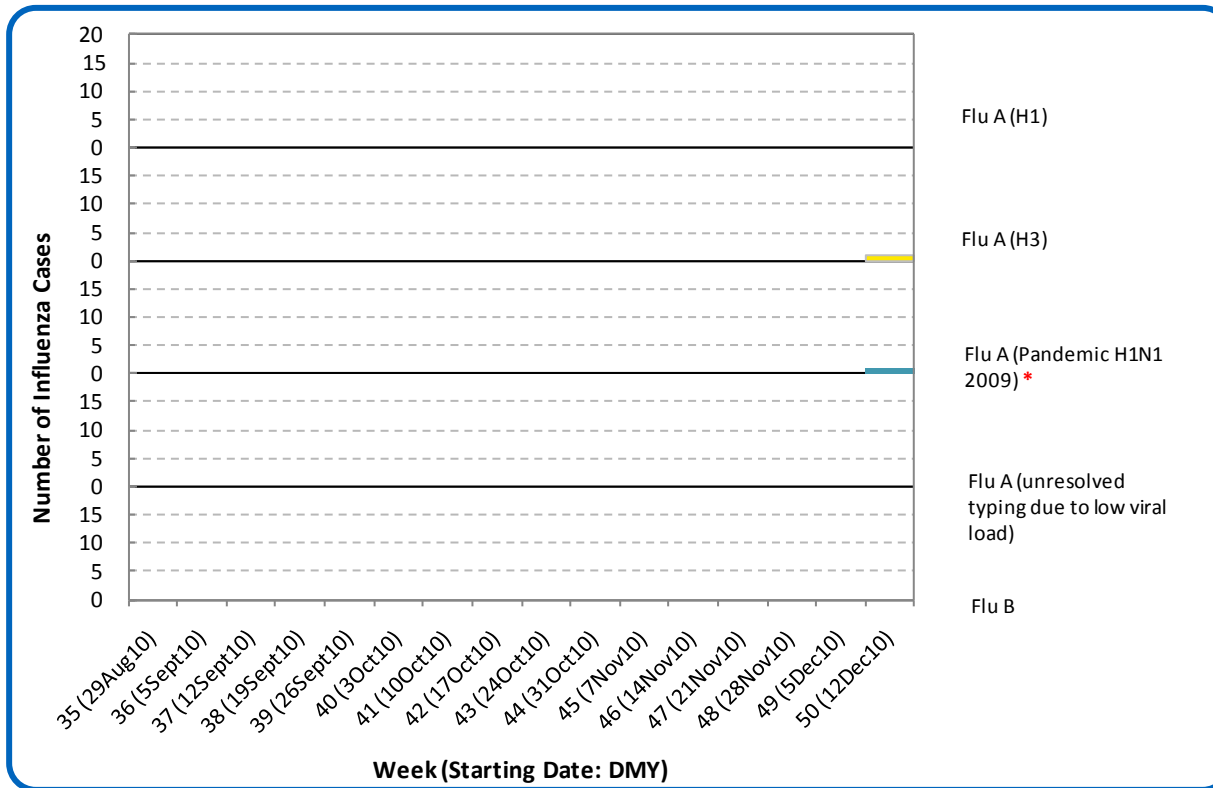
SURVEILLANCE AND HEALTH STATUS ASSESSMENT

Public Health Surveillance

Report Date: December 21, 2010

An influenza report targeted to the general public is available at: <http://www.health.alberta.ca/health-info/influenza-evidence.html>

Figure 6C: Laboratory confirmed Influenza cases, by subtype, by week specimen received, North Zone (2010)



\*Note: The specimen received in Week 50 was positive for both RSV and influenza A (H1N1) 2009.  
 Source: Outbreak Response Toolkit (includes cases with positive respiratory specimens received on or before Dec 18, 2010).  
 For more information on data definitions and sources see [Annex: Data Notes section at the end of this report](#)

SURVEILLANCE AND HEALTH STATUS ASSESSMENT

Public Health Surveillance  
 Report Date: December 21, 2010

An influenza report targeted to the general public is available at: <http://www.health.alberta.ca/health-info/influenza-evidence.html>

[Back to first page](#)

Table 6A: New Influenza cases (and age specific rates), by subtype, by age group, Edmonton Zone (Week 49: Dec 5-11, 2010)

	Flu A (Seasonal-H1)		Flu A (Seasonal-H3)		Flu A (Pandemic H1N1 2009)		Flu A (unresolved typing due to low viral load)		Flu B		Total	
	#	Rate (per 10,000)	#	Rate (per 10,000)	#	Rate (per 10,000)	#	Rate (per 10,000)	#	Rate (per 10,000)	#	Rate (per 10,000)
0 to <2 years	0	0.0	0	0.0	1	0.7	0	0.0	0	0.0	1	0.7
2 to <5 years	0	0.0	0	0.0	0	0.0	0	0.0	0	0.0	0	0.0
5 to <9 years	0	0.0	0	0.0	0	0.0	0	0.0	0	0.0	0	0.0
9 to <18 years	0	0.0	1	0.2	0	0.0	0	0.0	0	0.0	1	0.2
18 to <65 years	0	0.0	0	0.0	0	0.0	0	0.0	0	0.0	0	0.0
65 to <75 years	0	0.0	0	0.0	0	0.0	0	0.0	0	0.0	0	0.0
75+ years	0	0.0	0	0.0	0	0.0	0	0.0	0	0.0	0	0.0
<b>Total</b>	<b>0</b>	<b>0.0</b>	<b>1</b>	<b>&lt;0.1</b>	<b>1</b>	<b>&lt;0.1</b>	<b>0</b>	<b>0.0</b>	<b>0</b>	<b>0.0</b>	<b>2</b>	<b>&lt;0.1</b>

Source: Outbreak Response Toolkit (includes cases with positive respiratory specimens received on or before Dec 18, 2010).

Population data values used to calculate rates are for June 30, 2009 and are estimated using actual population values from the Alberta Health Care Insurance Plan (AHCIP) Registration File as of March 31, 2009.

For more information on data definitions and sources see [Annex: Data Notes section at the end of this report](#)

## SURVEILLANCE AND HEALTH STATUS ASSESSMENT

### Public Health Surveillance

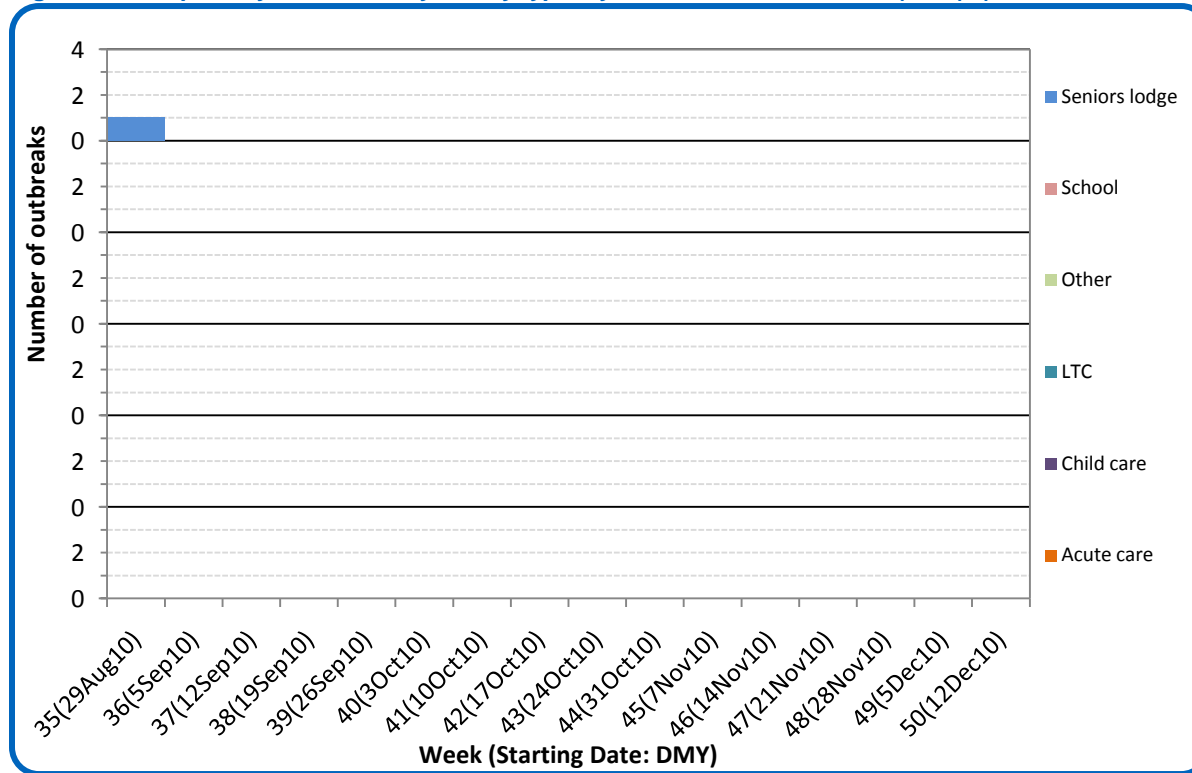
Report Date: December 21, 2010

An influenza report targeted to the general public is available at: <http://www.health.alberta.ca/health-info/influenza-evidence.html>

[Back to first page](#)

There have been no respiratory outbreaks reported from the North Zone since the week of Aug 29.

Figure 6D: Respiratory outbreaks, by facility type, by onset week, North Zone (2010); (school outbreaks may not have a laboratory confirmation)



Source: Alberta Outbreak Reporting Form as of 23:59 on Dec 18, 2010  
For more information on data definitions and sources see [Annex: Data Notes section at the end of this report](#)

**SURVEILLANCE AND HEALTH STATUS ASSESSMENT**

**Public Health Surveillance**  
Report Date: December 21, 2010

An influenza report targeted to the general public is available at: <http://www.health.alberta.ca/health-info/influenza-evidence.html>

[Back to first page](#)

### Attack rates in respiratory outbreaks

There have been no reports of respiratory outbreaks in North Zone since the week of Aug 29.

### Influenza-like illness visits and “Left Without Being seen”

There are no data available for the North Zone.

### Respiratory related calls to Health Link

The number of calls to Health Link Alberta by residents of North Zone for cough or breathing difficulties was 6% lower in Week 50 (Dec 12-8) compared to the previous week.

### Percentage of visits to sentinel offices with Influenza-like illness

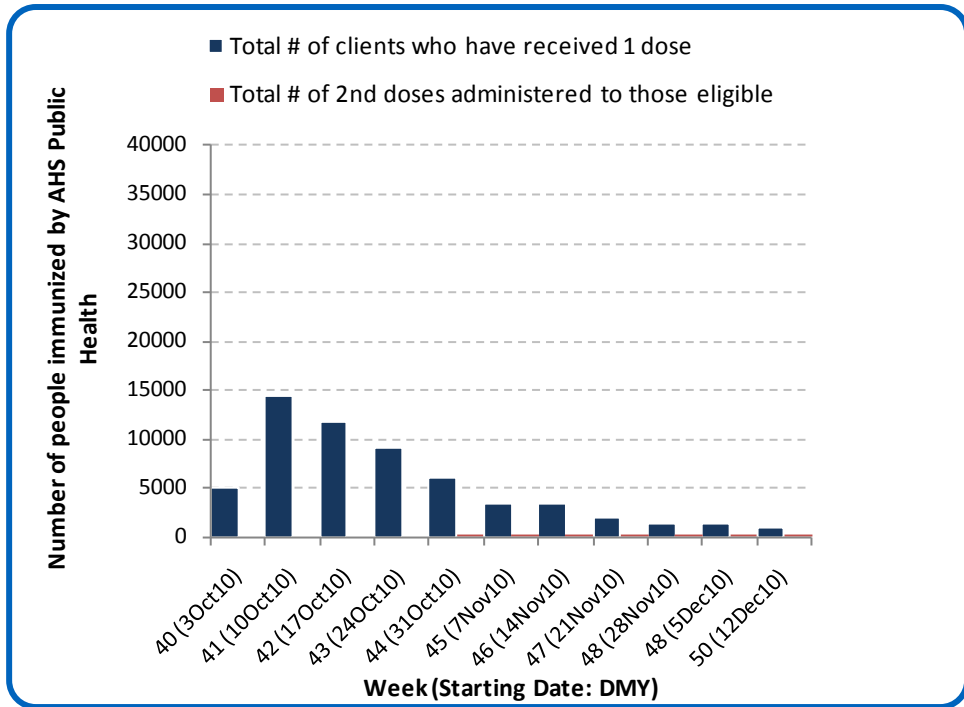
There were no reports of ILI-related visits to sentinel physician offices by residents of North Zone in Week 49 (Dec 5-11).

### Percentage of visits to sentinel offices with lower respiratory tract infection

The percentage of LRTI-related visits to sentinel physician offices by residents of North Zone was 36% lower in Week 49 (Dec 5 -11) than in Week 48.

[Back to first page](#)

Figure 6E: Number Immunized by AHS (Public Health), by week, North Zone (2010)



Source: AHS Zones (doses do not include those delivered by external providers)  
 Note: Immunization coverage rates will be reported at the end of the influenza season  
 For more information on data definitions and sources see [Annex: Data Notes section at the end of this report](#)

[Back to first page](#)

**Table 6B: AHS (Public Health) Delivered Influenza Immunizations (with Cumulative totals), by priority group, North Zone (2010)**

Priority Group	Number Immunized	
	(Week 50 – Dec 12-18, 2010)	Cumulative Number Immunized (since Oct 3, 2010)
Long term care staff	12	793
Health care workers	44	4,548
Pregnant women	21	504
Residents of long term care	3	1,243
65 years of age and over	96	15,366
All children 6 months up to and including 23 months*	Dose #1	1,881
	Dose #2	422
All children 24 months up to and including 59 months*	Dose #1	2,329
	Dose #2	73
High risk: 5 years up to and including 8 years*	Dose #1	878
	Dose #2	7
High risk: 9 years up to and including 64 years	83	7,399
Healthy: 5 years up to and including 8 years*	Dose #1	2,231
	Dose #2	41
Healthy: 9 years up to and including 64 years	450	21,832
<b>Total number of clients who have received 1 dose</b>	<b>938</b>	<b>59,004</b>
<b>Total number of 2nd doses administered to those eligible*</b>	<b>87</b>	<b>543</b>

Source: AHS Zones (doses do not include those delivered by external providers)

\*Children under 9 years of age who have not received at least one dose of seasonal influenza vaccine in past years require two doses, given at least four weeks apart.

Note: Immunization coverage rates will be reported at the end of the influenza season

For more information on data definitions and sources see [Annex: Data Notes section at the end of this report](#)

## SURVEILLANCE AND HEALTH STATUS ASSESSMENT

### Public Health Surveillance

Report Date: December 21, 2010

An influenza report targeted to the general public is available at: <http://www.health.alberta.ca/health-info/influenza-evidence.html>

## ANNEX: DATA NOTES

[Back to first page](#)

### LABORATORY

Information on laboratory confirmed respiratory virus activity in Alberta is based on data from 2 sources:

- 1) Non-influenza viruses: The Alberta Provincial Public Health Laboratory DIAL system (Data Integration for Alberta Laboratories) – a specimen based system. Cases are determined by rationalizing samples from the same patient with the same virus identified within a 30-day period. The information (i.e. received date) from the first sample identifying the identical virus is used in this report.
- 2) Influenza viruses: The Alberta influenza Case Management System – an influenza case based system.

Both data sources are web-based applications supported by the Canadian Network for Public Health Intelligence.

The data in this report are based on specimens obtained from residents of Alberta; according to the date the specimen was received by the laboratory.

Definition for “mixed” – a single sample where multiple viral organisms were isolated.

### INFLUENZA-LIKE ILLNESS

Four data sources are used to provide information on utilization of primary and acute care services by people with Influenza-Like Illness (ILI). *Caution: Each source uses potentially different definitions of ILI.*

1. Primary care summaries are obtained from the TARRANT system. Patients seen by TARRANT physicians may not be representative of the general population. Reported ILI cases represent people seen by TARRANT physicians, according to the date seen by the physician. The percentage of ILI represents the proportion of patients with ILI of all patients seen by the physician.
2. In addition to reporting visits of patients with ILI, TARRANT physicians also report visits with lower respiratory tract infections (LRTI). Each visit is recorded only once, even if a patient has symptoms consistent with ILI and LRTI. The combined ILI- and LRTI-related visits are therefore suggestive of overall respiratory infections in the patient population.
3. Information on visits for ILI in Emergency Departments (ED) and urgent care centers are provided by the Alberta Real Time Syndromic Surveillance Net (ARTSSN) data repository. ILI designation is based on patients being screened in emergency departments with an ILI screening tool. The primary purpose of the ILI screening tool is to implement appropriate infection control measures. The original data sources fed to the ARTSSN data repository are EDIS (Emergency Department Information System) for the Edmonton Zone and REDIS for the Calgary Zone.
4. Health Link Alberta is a 24 hour a day, 7 day a week nurse telephone advice and health information service that provides the public with advice and information about health symptoms and concerns. The original data source for the daily calls to Health Link Alberta for ILI, cough, and breathing difficulties is the Health Link database called Sharp Focus.

## SURVEILLANCE AND HEALTH STATUS ASSESSMENT

### Public Health Surveillance

Report Date: December 21, 2010

An influenza report targeted to the general public is available at: <http://www.health.alberta.ca/health-info/influenza-evidence.html>

## OUTBREAKS

[Back to first page](#)

Upon notification of an outbreak, the *Alberta Health & Wellness/Alberta Health Services* Outbreak Reporting Form (Fillable PDF) is completed by Zone Public Health investigators and sent to *Alberta Health & Wellness and AHS Public Health Surveillance*. The form includes information about the type and location of the outbreak, type of facility, and the causative organism (confirmed or suspected). There may be a delay between the reporting of an outbreak and the identification of the organism. This report includes only those outbreaks that are laboratory confirmed and caused by influenza-like illness viruses; outbreaks that are caused by bacteria (i.e. pertussis, invasive pneumococcal disease) and other types of viruses (i.e. measles, rubella (German measles), chickenpox) are excluded. Also excluded are those outbreaks that have no causative agent identified by the Provincial Laboratory for Public Health or where specimens are not tested or an outbreak with only one infected (confirmed or probable) case during a 7 day period. This follows the same approach of PHAC FluWatch for defining ILI/influenza outbreak. The naming convention of outbreak facilities by FluWatch - "Hospital and residential institutions" - is also adopted. Outbreaks in schools are officially counted in tables or graphs whether there is or not a laboratory confirmation; outbreaks in hospital and residential institutions that are pending for laboratory confirmation are described for information only but not officially presented in graphs or tables in this report.

## INFLUENZA IMMUNIZATIONS

Influenza immunization data are reported by AHS zones. Numbers are available to the Public Health Surveillance team at the beginning of the week for the doses administered the previous week (Sunday to Saturday). It includes those doses administered by AHS (Public Health) only. Clients can only exist in one priority group. Immunization coverage rates will be reported at the end of March, 2011.

## POPULATION NUMBERS

Population data values used to calculate rates are for June 30, 2009 and are estimated using actual population values from the Alberta Health Care Insurance Plan (AHCIP) Registration File as of March 31, 2009. The following registrants are included: residents of Alberta; 'residents' of Alberta temporarily living elsewhere, such as extended visits or vacations or students attending an educational institute outside of Alberta, or Albertans temporarily (up to four years) working outside Alberta; persons during the first three months after they move from Alberta to another Canadian province; dependants of members of the RCMP and Armed Forces; persons from another country who are working or studying in Alberta on valid visas; and Natives/Aboriginals whose premiums are paid by Health Canada, First Nations and Inuit Health Branch. Not included are: members of the Armed Forces and RCMP; inmates at federal penitentiaries; persons from other provinces during their first three months in Alberta; and persons who have not registered for eligibility, or have opted out.

Slight differences between values provided at this level of aggregation and data provided at other levels of aggregation may occur because of round-off error. Population values are subject to change without notice when new source data is received.

## SURVEILLANCE AND HEALTH STATUS ASSESSMENT

### Public Health Surveillance

Report Date: December 21, 2010

An influenza report targeted to the general public is available at: <http://www.health.alberta.ca/health-info/influenza-evidence.html>