

Weekly Report

January 5, 2011

The purpose of this report is to inform Public Health staff, primary care providers, acute care staff and other community practitioners about recent respiratory virus activity in the province of Alberta. Unless otherwise noted, all data presented are current as of the Saturday prior to the day the report is released.

To navigate to certain sections of the report or to visit other relevant websites, use the [Quick Links below](#)

[Alberta Snapshot](#)

[Section 1: Alberta](#)

[Section 2: Zone 1 - South](#)

[Section 3: Zone 2 - Calgary](#)

[Section 4: Zone 3 - Central](#)

[Section 5: Zone 4 - Edmonton](#)

[Section 6: Zone 5 - North](#)

[Annex: Data Notes](#)

[Current Global Information](#)

[FluWatch \(PHAC\)](#)

[FluView \(US CDC\)](#)

[HPA \(UK\)](#)

[WHO](#)

[Travel Advisories](#)

What's New?

- Although the influenza season has reportedly ended in the temperate parts of the Southern Hemisphere, the winter influenza season is now underway in parts of the Northern Hemisphere. The UK has seen a surge in both mild and severe cases in recent weeks, primarily associated with influenza A (H1N1) 2009 virus and to a lesser extent influenza B. The pattern of illness associated with influenza A (H1N1) 2009 is similar to that seen during the 2009 Pandemic; primarily affecting young adults, particularly those who are pregnant or who have underlying chronic conditions. Influenza like illness (ILI) in Europe, the Middle East and Northern Asia has generally been low although increases have been noted in some parts in recent weeks. Activity has been low in the tropical areas of the world, with the exception of Sri Lanka which has reported a marked increase in the number of mild and severe cases of influenza A (H1N1) 2009, including over 20 deaths (most of which have been in people under the age of 60 with pre-existing medical conditions).
- In North America, ILI activity is now above baseline (particularly in the southeastern parts of the US and the eastern and central parts of Canada) and is associated primarily with influenza A (H3N2) and influenza B. Notably, the majority of the viruses characterized in both the UK and North America have been antigenically similar to those contained in the current influenza vaccine.
- In Alberta, RSV and influenza activity continue to rise. In the last 2 weeks, 51 new cases of influenza have been confirmed among Alberta residents. Five of these cases (including a child under the age of five) were sub-typed as influenza A (H1N1) 2009, 42 were sub-typed as influenza A (H3), two cases were identified as influenza A with unresolved typing and two cases were identified as influenza type B. Of the new cases confirmed in the last 2 weeks, three are from South Zone, 13 are from Calgary Zone, four are from Central Zone, 21 are from Edmonton Zone, and ten are from North Zone. As of the end of January 1, 2011 the total number of laboratory confirmed influenza cases in the province this season is 93.
- In the last 2 weeks, there were three confirmed respiratory outbreaks in Alberta. One was attributed to RSV in an Edmonton Zone daycare facility, one was attributed to influenza A (H3) in an Edmonton Zone senior's lodge, and the other was attributed to parainfluenza in a Calgary Zone long term care facility. Two additional respiratory outbreaks are currently pending laboratory confirmation; one is in Central Zone and one is in Calgary Zone.

If you have questions about the Alberta Respiratory Virus Surveillance Update, or any of the indicators, please contact: AHSPublicHealthSurveillance@albertahealthservices.ca Or phone: 780-342-0210

Alberta Snapshot

[Back to first page](#)

Indicators			Cumulative Counts					Alberta
			Week 35 (starting Aug 29/10) to week 52 (starting Dec 26/10)					
			South	Calgary	Central	Edmonton	North	
Laboratory Confirmed Cases	Number of cases with a positive respiratory specimen ¹	Adenovirus	3	18	8	33	7	69
		Coronavirus	2	21	8	47	18	96
		Human metapneumovirus (hMPV)	4	1	0	1	1	7
		Influenza A	10	32	5	32	11	90*
		Influenza B	0	0	1	1	1	3
		Parainfluenza	14	27	20	87	46	194
		Respiratory syncytial virus (RSV)	14	114	12	142	39	321
		Rhino enterovirus	67	335	132	460	211	1205
		Mixed	9	54	15	57	41	176
		Total		123	605	203	862	377
Outbreaks	# laboratory confirmed respiratory outbreaks ²	0	7	1	10	1	19	
Influenza Immunizations	Total number of clients who have received 1 dose administered by AHS Public Health ³ (cumulative since Oct 3, 2010)	42,141	178,855	59,632	154,791	59,665	495,084	

-- Information not available

*Note: Three specimens were positive for both influenza A and RSV. To ensure an accurate count of laboratory confirmed influenza cases, they have been included in the influenza A category. To avoid double counting, they have not been included in the "mixed" category.

¹ Sources: DIAL – Provincial Laboratory and the Outbreak Response Toolkit (includes cases with positive respiratory specimens received on or before Jan 1, 2011).

² Source: Alberta Health and Wellness Outbreak Reporting Form (Fillable PDF) from All Zones

³Source: AHS Zones (number does not include doses provided by external providers); includes first doses only for those that require two doses

For more information on data definitions and sources see [Annex: Data Notes section at the end of this report](#)

SURVEILLANCE AND HEALTH STATUS ASSESSMENT

Public Health Surveillance

Report Date: January 5, 2011

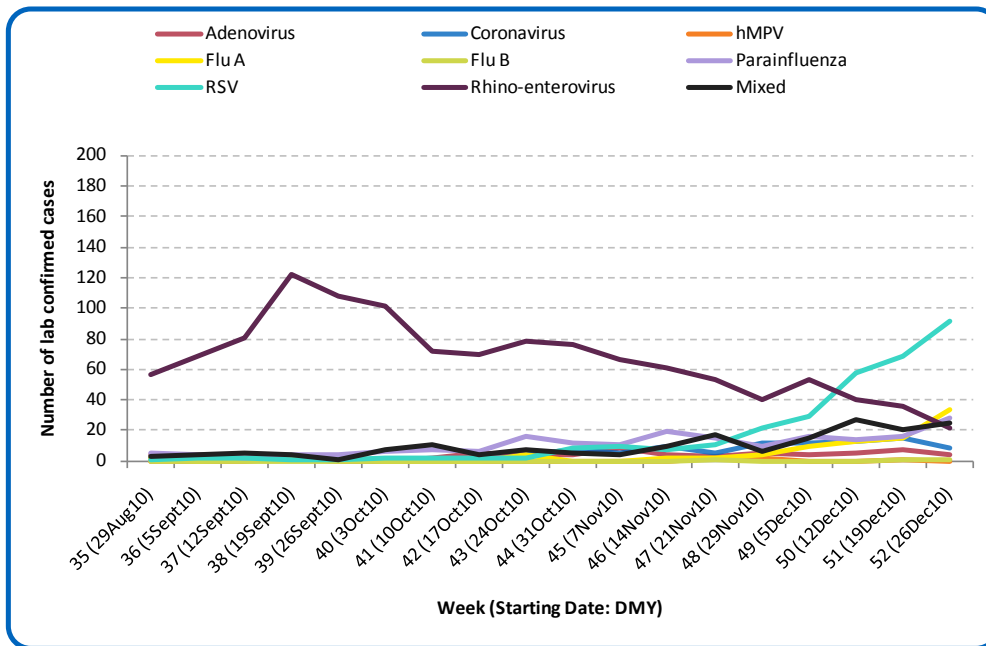
An influenza report targeted to the general public is available at: <http://www.health.alberta.ca/health-info/influenza-evidence.html>

SECTION 1: ALBERTA

[Back to first page](#)

The predominant respiratory virus circulating in Alberta is RSV, which has been affecting primarily infants 2 years of age and under. In addition, 35 new cases of influenza were confirmed in the province in week 52, including five cases of influenza A (H1N1) 2009 (one of which was a child under the age of five years). Of the remaining new cases confirmed last week, 28 were sub-typed as influenza A (H3), one was typed as influenza A with unresolved sub-typing and one was typed as influenza B. This season, there have been a total of 93 confirmed cases of influenza in Alberta (81.7% type A H3 sub-type, 9.7% type A (H1N1) 2009, 5.4% type A with unresolved sub-typing, and 3.2% type B). In total, 29 cases have been confirmed in children under the age of 9 years of age (including 14 infants), four cases have been confirmed in children aged nine to less than 18; 41 cases have been confirmed in adults aged 18 to less than 65 years, and 19 cases have been confirmed in adults aged 65 years and over. At this point for the season, the age specific rate for infants 0 to <2 years of age has been slightly higher than the rates in other age groups at 1.4 per 10,000.

Figure 1A: Laboratory confirmed respiratory virus cases, by virus type, by week, Alberta (2010-2011)



Sources: DIAL – Provincial Laboratory and the Outbreak Response Toolkit (includes cases with positive respiratory specimens received on or before Jan 1, 2011). For more information on data definitions and sources see [Annex: Data Notes section at the end of this report](#)

SURVEILLANCE AND HEALTH STATUS ASSESSMENT

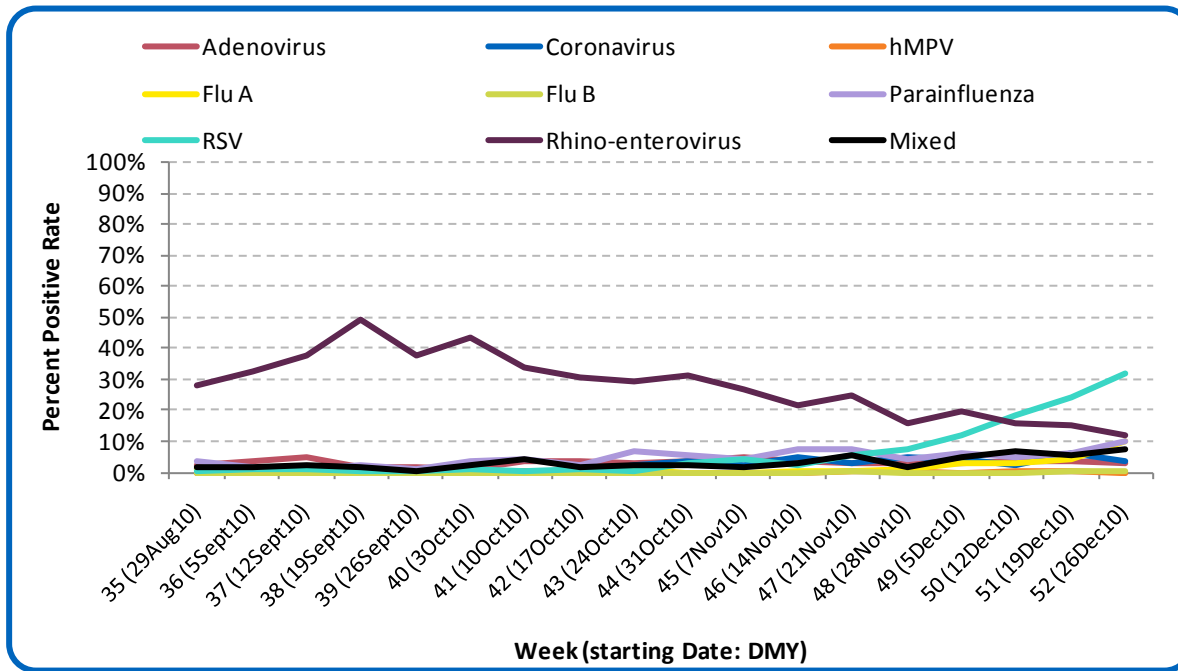
Public Health Surveillance

Report Date: January 5, 2011

An influenza report targeted to the general public is available at: <http://www.health.alberta.ca/health-info/influenza-evidence.html>

Figure 1B: Respiratory Specimen Percent Positive Rates, by virus type, by week, Alberta (2010-2011)

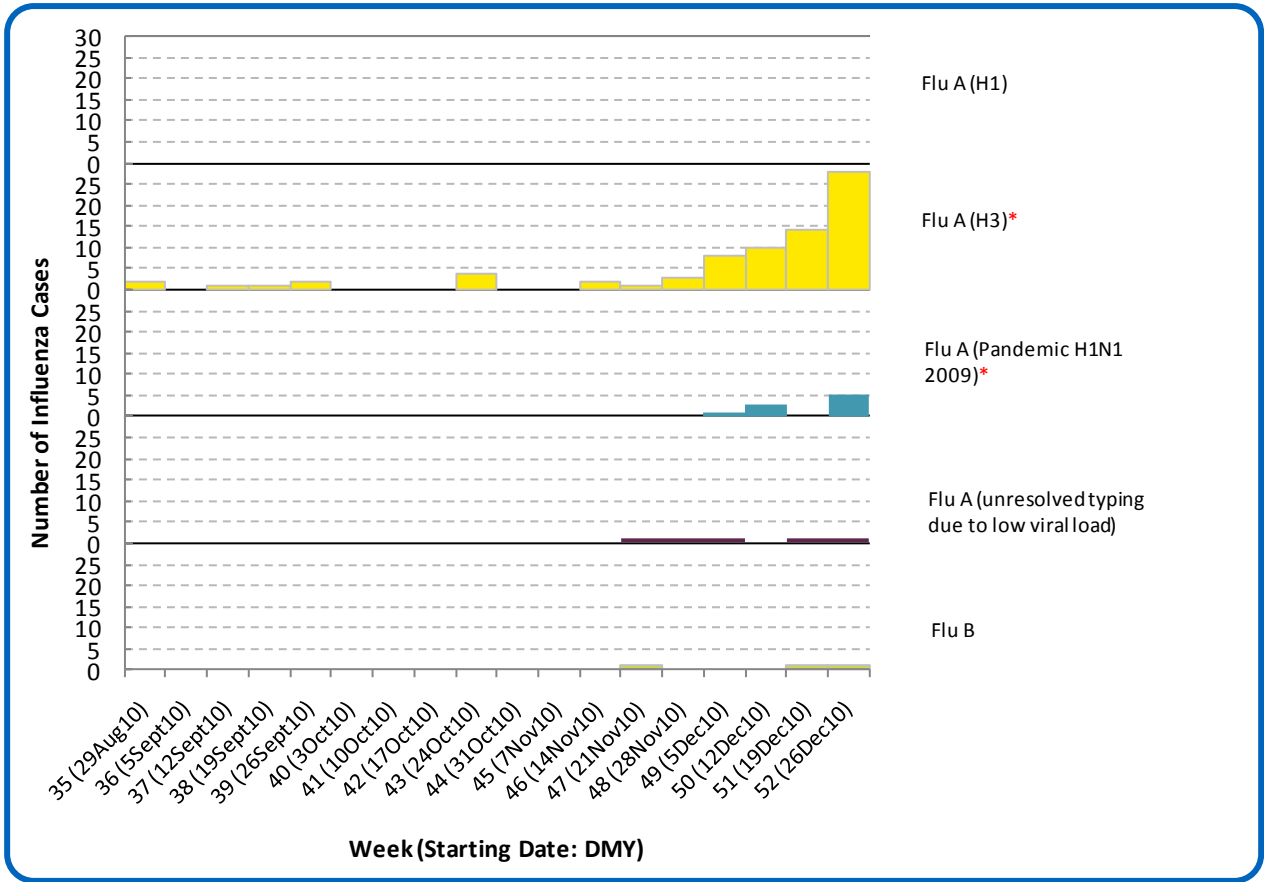
[Back to first page](#)



Source: DIAL – Provincial Laboratory (includes cases with positive respiratory specimens received on or before Jan 1, 2011)
 For more information on data definitions and sources see [Annex: Data Notes section at the end of this report](#)

Figure 1C: Laboratory confirmed Influenza cases, by subtype, by week specimen received, Alberta (2010-2011)

[Back to first page](#)



*Note: One specimen received in Week 50 was positive for both RSV and influenza A (H1N1) 2009 and two specimens received in Week 52 were positive for both RSV and influenza A (H3).

Source: Outbreak Response Toolkit (includes cases with positive respiratory specimens received on or before Jan 1, 2011).

For more information on data definitions and sources see [Annex: Data Notes section at the end of this report](#)

[Back to first page](#)

Table 1A: New Influenza cases (and age specific rates), by subtype, by age group, Alberta (Week 52: Dec 26, 2010-Jan 1, 2011)

	Flu A (Seasonal-H1)		Flu A (Seasonal-H3)		Flu A (Pandemic H1N1 2009)		Flu A (unresolved typing due to low viral load)		Flu B		Total	
	#	Rate (per 10,000)	#	Rate (per 10,000)	#	Rate (per 10,000)	#	Rate (per 10,000)	#	Rate (per 10,000)	#	Rate (per 10,000)
0 to <2 years	0	0.0	5	0.5	0	0.0	1	0.1	0	0.0	6	0.6
2 to <5 years	0	0.0	3	0.2	1	0.1	0	0.0	1	0.1	5	0.4
5 to <9 years	0	0.0	1	0.1	0	0.0	0	0.0	0	0.0	1	0.1
9 to <18 years	0	0.0	1	<0.1	0	0.0	0	0.0	0	0.0	1	<0.1
18 to <65 years	0	0.0	12	0.1	4	<0.1	0	0.0	0	0.0	16	0.1
65 to <75 years	0	0.0	4	0.2	0	0.0	0	0.0	0	0.0	4	0.2
75+ years	0	0.0	2	0.1	0	0.0	0	0.0	0	0.0	2	0.1
Total	0	0.0	28	0.1	5	<0.1	1	<0.1	1	<0.1	35	0.1

Table 1B: Cumulative Influenza cases (and age specific rates), by subtype, by age group, Alberta (Aug 29, 2010 – Jan 1, 2011)

	Flu A (Seasonal-H1)		Flu A (Seasonal-H3)		Flu A (Pandemic H1N1 2009)		Flu A (unresolved typing due to low viral load)		Flu B		Total	
	#	Rate (per 10,000)	#	Rate (per 10,000)	#	Rate (per 10,000)	#	Rate (per 10,000)	#	Rate (per 10,000)	#	Rate (per 10,000)
0 to <2 years	0	0.0	11	1.1	1	0.1	1	0.1	1	0.1	14	1.4
2 to <5 years	0	0.0	8	0.6	1	0.1	1	0.1	1	0.1	11	0.8
5 to <9 years	0	0.0	4	0.2	0	0.0	0	0.0	0	0.0	4	0.2
9 to <18 years	0	0.0	3	0.1	0	0.0	1	<0.1	0	0.0	4	0.1
18 to <65 years	0	0.0	31	0.1	7	<0.1	2	<0.1	1	<0.1	41	0.2
65 to <75 years	0	0.0	7	0.3	0	0.0	0	0.0	0	0.0	7	0.3
75+ years	0	0.0	12	0.7	0	0.0	0	0.0	0	0.0	12	0.7
Total	0	0.0	76	0.2	9	<0.1	5	<0.1	3	<0.1	93	0.3

Source for Table 1A & 1B: Outbreak Response Toolkit (includes cases with positive respiratory specimens received on or before *Jan 1, 2011*).

Population data values used to calculate rates are for June 30, 2009 and are estimated using actual population values from the Alberta Health Care Insurance Plan (AHCIP) Registration File as of March 31, 2009.

For more information on data definitions and sources see [Annex: Data Notes section at the end of this report](#)

SURVEILLANCE AND HEALTH STATUS ASSESSMENT

Public Health Surveillance

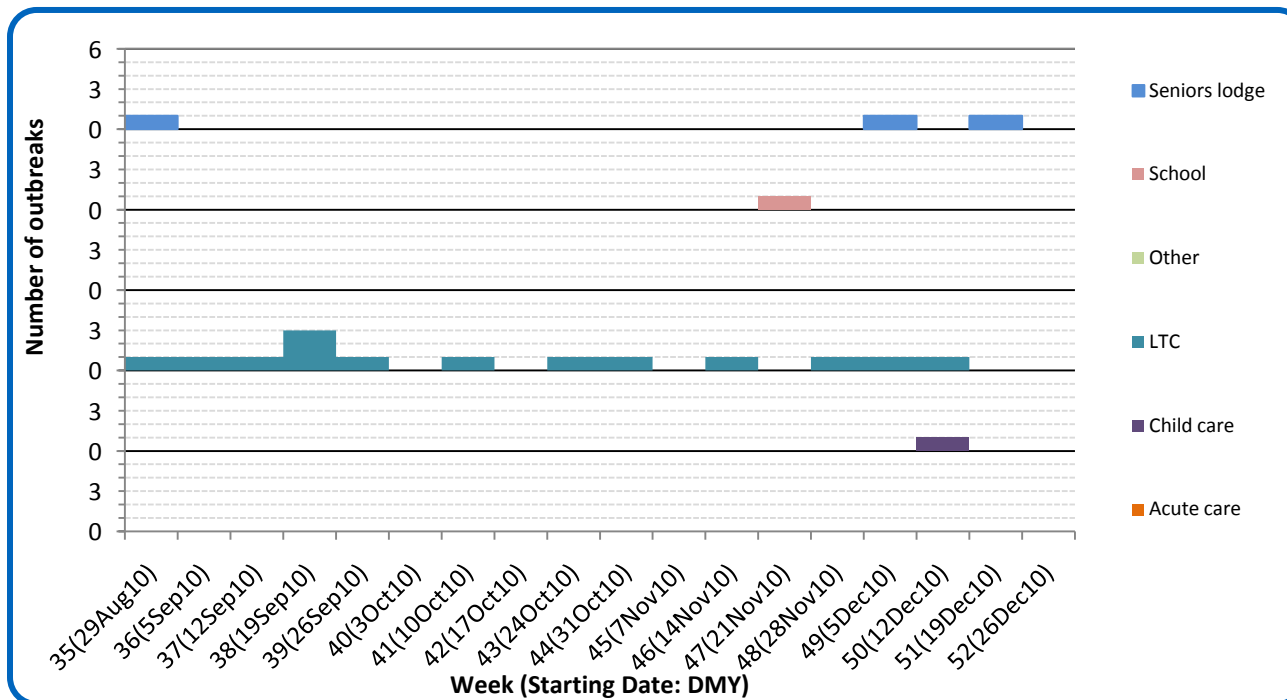
Report Date: January 5, 2011

An influenza report targeted to the general public is available at: <http://www.health.alberta.ca/health-info/influenza-evidence.html>

[Back to first page](#)

Three respiratory outbreaks have been confirmed in Alberta since Week 49 (Dec 5-11). One outbreak, described in the last report, occurred in an Edmonton Zone daycare facility and was confirmed as an RSV outbreak. Another outbreak, also in the Edmonton Zone, occurred in a seniors' lodge/assisted living facility with an onset date of Dec 20, 2010. It was confirmed as an influenza (H3) outbreak and is the second influenza outbreak confirmed in this zone this season. The third outbreak occurred in a Calgary Zone long term care facility with an onset date of Dec 16, 2010, and was confirmed as a parainfluenza outbreak. Currently, there are two more outbreaks pending laboratory confirmation; one in Calgary Zone and the other in Central Zone.

Figure 1D: Respiratory outbreaks, by facility type, by onset week, Alberta (2010-2011; school outbreaks may not have a laboratory confirmation)



Source: Alberta Outbreak Reporting Form as of 23:59 on Jan 1, 2011. LTC stands for long term care facility. For more information on data definitions and sources see [Annex: Data Notes section at the end of this report](#)

SURVEILLANCE AND HEALTH STATUS ASSESSMENT

Public Health Surveillance

Report Date: January 5, 2011

An influenza report targeted to the general public is available at: <http://www.health.alberta.ca/health-info/influenza-evidence.html>

[Back to first page](#)

Attack rates in respiratory outbreaks

The RSV outbreak in an Edmonton Zone daycare facility had an attack rate of 23%. The influenza outbreak in an Edmonton Zone senior's lodge had a preliminary attack rate of 4%. The parainfluenza outbreak in the Calgary Zone long term care facility had an attack rate of 16%. Both outbreaks currently pending laboratory confirmation in Calgary and Central Zones had preliminary attack rates of 6%.

Influenza-like illness visits and “Left Without Being Seen”

The combined number of visits to emergency departments/urgent care centers for influenza-like illness (ILI) from the City of Calgary and Edmonton Zone increased significantly in Weeks 51 -52 (Dec 19, 2010 – Jan 1, 2011) compared to Week 50, reaching the highest level so far this season (both in terms of absolute numbers and percentage of all screened visits). The number of hospital admissions and the number of visits of patients who left the EDs without being seen for ILI also increased significantly in the same time period. For people with cough symptoms during that same period, the visits to EDs, the number of hospital admissions and the number of patients who left the EDs without being seen all followed the same increasing pattern as the ILI visits in Weeks 51-52.

Respiratory related calls to Health Link Alberta

The number of calls to Health Link Alberta for cough or breathing difficulties was 33% higher in Week 52 (Dec 26, 2010 – Jan 1, 2011) compared to Week 50. This is the highest it has been this season. The increase is due to increased calls on behalf of children younger than 2 years old.

Percentage of visits to sentinel offices with influenza-like illness (ILI)

In Week 52 (Dec 26, 2010 – Jan 1, 2011), the province-wide percentage of ILI-related visits to sentinel physician offices was not as high as it was in Week 50 (Dec 12-18) and remained below 1%.

Percentage of visits to sentinel offices with lower respiratory tract infection (LRTI)

The province-wide percentage of LRTI-related visits to sentinel physician offices in Weeks 51 (Dec 19 -25) and 52 (Dec 26, 2010 – Jan 1, 2011) was 91% and 78% higher, respectively, when compared to Week 50.

The combined percentage of ILI- and LRTI-related visits in Weeks 51 and 52 was 17% and 56% higher, respectively, compared to Week 50. This is the highest this indicator has been this season, primarily due to the increased LRTI-related visits. This trend is consistent with that of increased ED visits or Health Link Alberta calls about symptoms suggestive of influenza-like illness for the same period.

SURVEILLANCE AND HEALTH STATUS ASSESSMENT

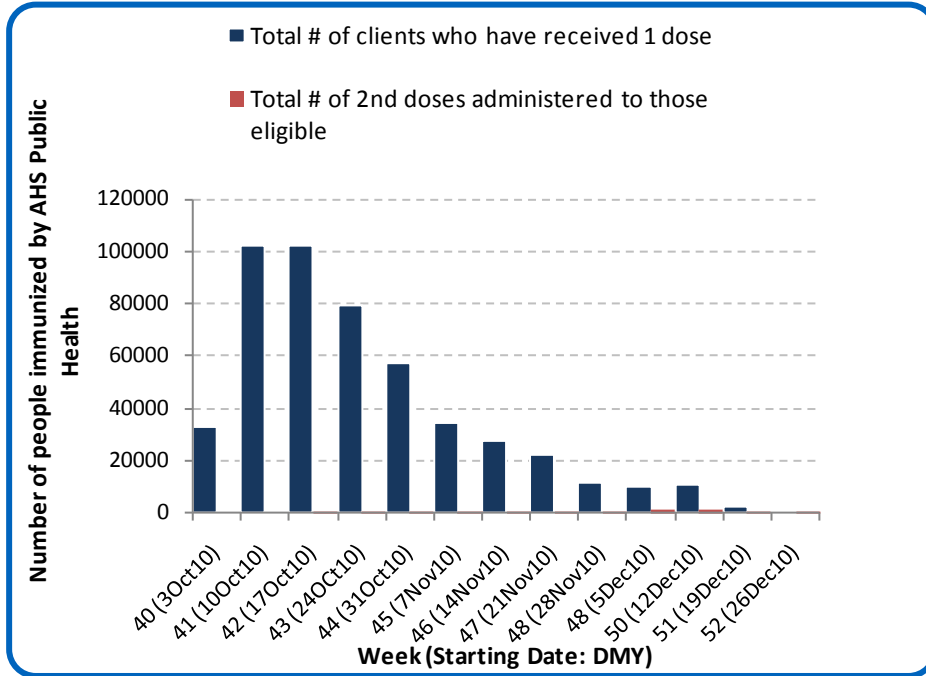
Public Health Surveillance

Report Date: January 5, 2011

An influenza report targeted to the general public is available at: <http://www.health.alberta.ca/health-info/influenza-evidence.html>

[Back to first page](#)

Figure 1E: Number Immunized by AHS (Public Health), by week, Alberta (2010-2011)



Source: AHS Zones (doses do not include those delivered by external providers);
 Note: Immunization coverage rates will be reported at the end of the influenza season
 For more information on data definitions and sources see [Annex: Data Notes section at the end of this report](#)

SURVEILLANCE AND HEALTH STATUS ASSESSMENT

Public Health Surveillance

Report Date: January 5, 2011

An influenza report targeted to the general public is available at: <http://www.health.alberta.ca/health-info/influenza-evidence.html>

[Back to first page](#)

Table 1C: AHS (Public Health) Delivered Influenza Immunizations (with Cumulative totals), by priority group, Alberta (2010-2011)

Priority Group	Number Immunized (Week 52 – Dec 26, 2010 - Jan 1, 2011)	Cumulative Number Immunized (since Oct 3, 2010)
Long term care staff	2	2,544
Health care workers	33	18,458
Pregnant women	24	4,283
Residents of long term care	0	4,806
65 years of age and over	69	145,069
All children 6 months up to and including 23 months*	Dose #1	334
	Dose #2	159
All children 24 months up to and including 59 months*	Dose #1	100
	Dose #2	20
High risk: 5 years up to and including 8 years*	Dose #1	12
	Dose #2	4
High risk: 9 years up to and including 64 years	113	54,256
Healthy: 5 years up to and including 8 years*	Dose #1	58
	Dose #2	6
Healthy: 9 years up to and including 64 years	567	200,131
Total number of clients who have received 1 dose	1,312	495,084
Total number of 2nd doses administered to those eligible*	189	5,765

Source: AHS Zones (doses do not include those delivered by external providers)

*Children under 9 years of age who have not received at least one dose of seasonal influenza vaccine in past years require two doses, given at least four weeks apart.

Note: Immunization coverage rates will be reported at the end of the influenza season

For more information on data definitions and sources see [Annex: Data Notes section at the end of this report](#)

SURVEILLANCE AND HEALTH STATUS ASSESSMENT

Public Health Surveillance

Report Date: January 5, 2011

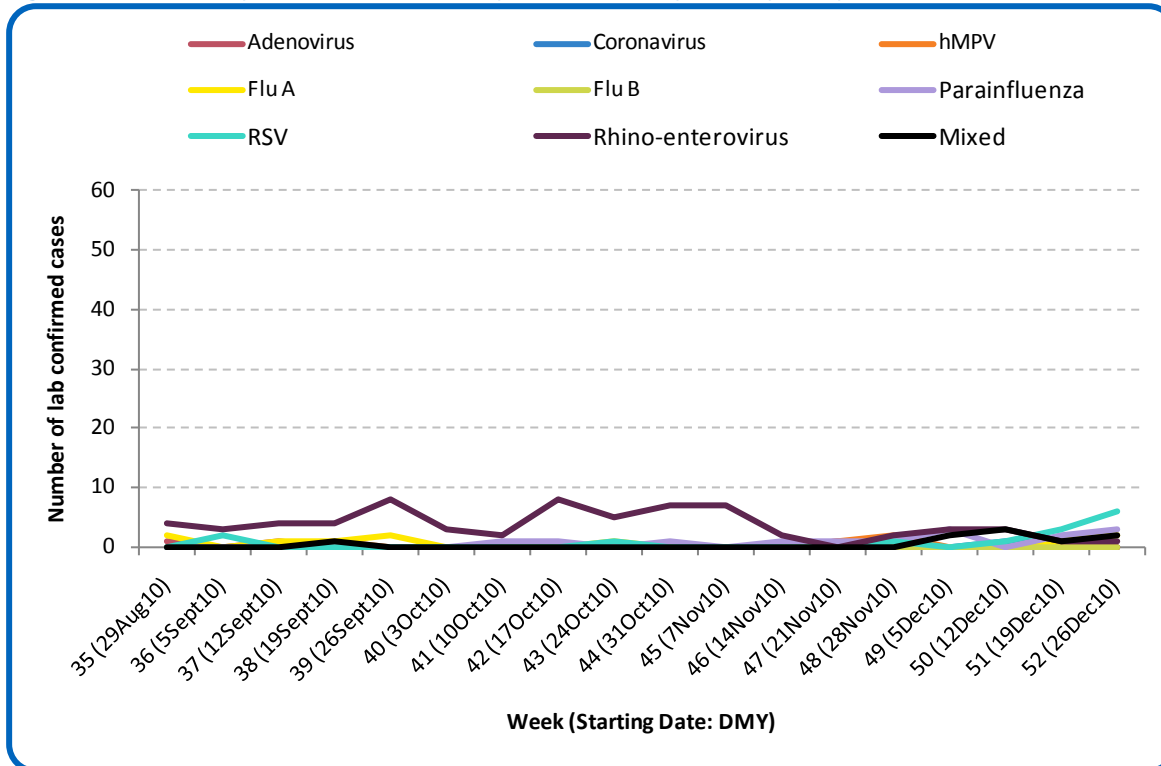
An influenza report targeted to the general public is available at: <http://www.health.alberta.ca/health-info/influenza-evidence.html>

SECTION 2: ZONE 1 - SOUTH

[Back to first page](#)

Generally, respiratory virus activity has been low in the South Zone, although the number of RSV cases is increasing. Last week, two new influenza A (H3) cases were confirmed in South Zone. In total, there have been ten confirmed cases of influenza A (H3) in South Zone this season. Six cases have been in adults aged 18 to less than 65 years and four cases have been in children under the age of 5 years (including one infant).

Figure 2A: Laboratory confirmed respiratory virus cases, by virus type, by week, South Zone (2010-2011)



Sources: DIAL – Provincial Laboratory and the Outbreak Response Toolkit (includes cases with positive respiratory specimens received on or before Jan 1, 2011). For more information on data definitions and sources see [Annex: Data Notes section at the end of this report](#)

SURVEILLANCE AND HEALTH STATUS ASSESSMENT

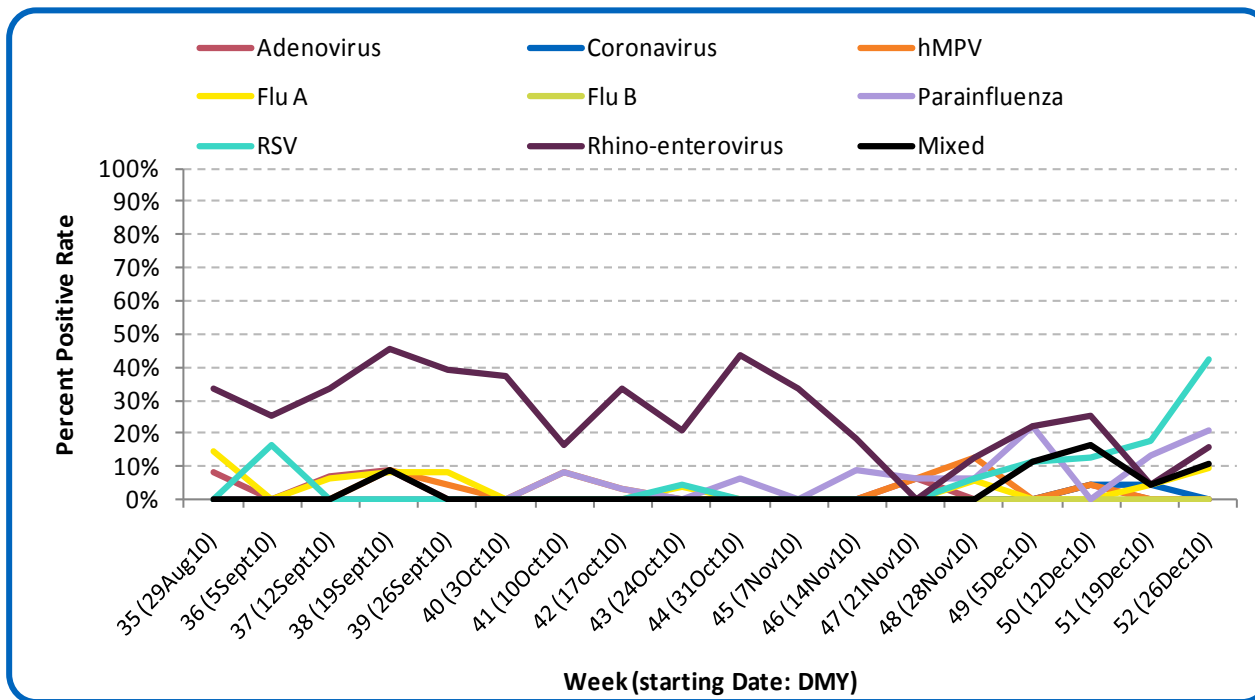
Public Health Surveillance

Report Date: January 5, 2011

An influenza report targeted to the general public is available at: <http://www.health.alberta.ca/health-info/influenza-evidence.html>

[Back to first page](#)

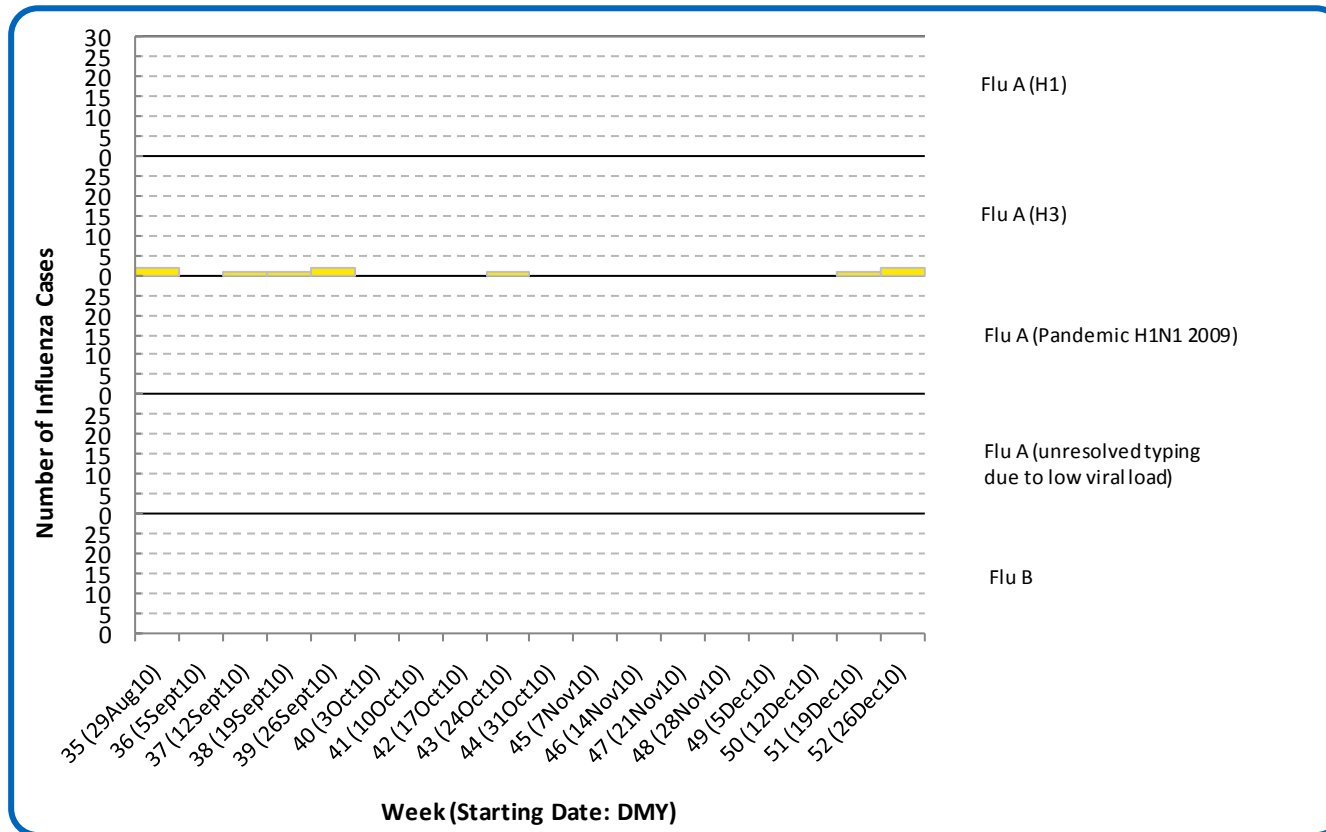
Figure 2B: Respiratory Specimen Percent Positive Rates, by virus type, by week, South Zone (2010-2011)



Source: DIAL – Provincial Laboratory (includes cases with positive respiratory specimens received on or before Jan 1, 2011)
For more information on data definitions and sources see [Annex: Data Notes section at the end of this report](#)

[Back to first page](#)

Figure 2C: Laboratory confirmed Influenza cases, by subtype, by week specimen received, South Zone (2010-2011)



Source: Outbreak Response Toolkit (includes cases with positive respiratory specimens received on or before Jan 1, 2011).
For more information on data definitions and sources see [Annex: Data Notes section at the end of this report](#)

[Back to first page](#)

Table 2A: New Influenza cases (and age specific rates), by subtype, by age group, South Zone (Week 52: Dec 26, 2010-Jan 1, 2011)

	Flu A (Seasonal-H1)		Flu A (Seasonal-H3)		Flu A (Pandemic H1N1 2009)		Flu A (unresolved typing due to low viral load)		Flu B		Total	
	#	Rate (per 10,000)	#	Rate (per 10,000)	#	Rate (per 10,000)	#	Rate (per 10,000)	#	Rate (per 10,000)	#	Rate (per 10,000)
0 to <2 years	0	0.0	0	0.0	0	0.0	0	0.0	0	0.0	0	0.0
2 to <5 years	0	0.0	1	0.9	0	0.0	0	0.0	0	0.0	1	0.9
5 to <9 years	0	0.0	0	0.0	0	0.0	0	0.0	0	0.0	0	0.0
9 to <18 years	0	0.0	0	0.0	0	0.0	0	0.0	0	0.0	0	0.0
18 to <65 years	0	0.0	1	0.1	0	0.0	0	0.0	0	0.0	1	0.1
65 to <75 years	0	0.0	0	0.0	0	0.0	0	0.0	0	0.0	0	0.0
75+ years	0	0.0	0	0.0	0	0.0	0	0.0	0	0.0	0	0.0
Total	0	0.0	2	0.1	0	0.0	0	0.0	0	0.0	2	0.1

Table 2B: Cumulative Influenza cases (and age specific rates), by subtype, by age group, South Zone (Aug 29, 2010–Jan 1, 2011)

	Flu A (Seasonal-H1)		Flu A (Seasonal-H3)		Flu A (Pandemic H1N1 2009)		Flu A (unresolved typing due to low viral load)		Flu B		Total	
	#	Rate (per 10,000)	#	Rate (per 10,000)	#	Rate (per 10,000)	#	Rate (per 10,000)	#	Rate (per 10,000)	#	Rate (per 10,000)
0 to <2 years	0	0.0	1	1.2	0	0.0	0	0.0	0	0.0	1	1.2
2 to <5 years	0	0.0	3	2.6	0	0.0	0	0.0	0	0.0	3	2.6
5 to <9 years	0	0.0	0	0.0	0	0.0	0	0.0	0	0.0	0	0.0
9 to <18 years	0	0.0	0	0.0	0	0.0	0	0.0	0	0.0	0	0.0
18 to <65 years	0	0.0	6	0.3	0	0.0	0	0.0	0	0.0	6	0.3
65 to <75 years	0	0.0	0	0.0	0	0.0	0	0.0	0	0.0	0	0.0
75+ years	0	0.0	0	0.0	0	0.0	0	0.0	0	0.0	0	0.0
Total	0	0.0	10	0.4	0	0.0	0	0.0	0	0.0	10	0.4

Source for Tables 2A & 2B: Outbreak Response Toolkit (includes cases with positive respiratory specimens received on or before *Jan 1, 2011*).

Population data values used to calculate rates are for June 30, 2009 and are estimated using actual population values from the Alberta Health Care Insurance Plan (AHCIP) Registration File as of March 31, 2009.

For more information on data definitions and sources see [Annex: Data Notes section at the end of this report](#)

SURVEILLANCE AND HEALTH STATUS ASSESSMENT

Public Health Surveillance

Report Date: January 5, 2011

An influenza report targeted to the general public is available at: <http://www.health.alberta.ca/health-info/influenza-evidence.html>

[Back to first page](#)

Attack rates in respiratory outbreaks

Since late August, there have been no respiratory outbreaks reported in the South Zone.

Influenza-like illness visits and “Left Without Being Seen”

This information is not available for the South Zone.

Respiratory related calls to Health Link Alberta

The number of calls to Health Link Alberta for cough or breathing difficulties by residents of the South Zone was 36% higher in Week 52 (Dec 26, 2010 – Jan 1, 2011) than in Week 50, reaching the highest it has been this season. The trend is due primarily to an increase in the number of calls on behalf of children younger than 5 years old and seniors 65 years or older.

Percentage of visits to sentinel offices with Influenza-like illness (ILI)

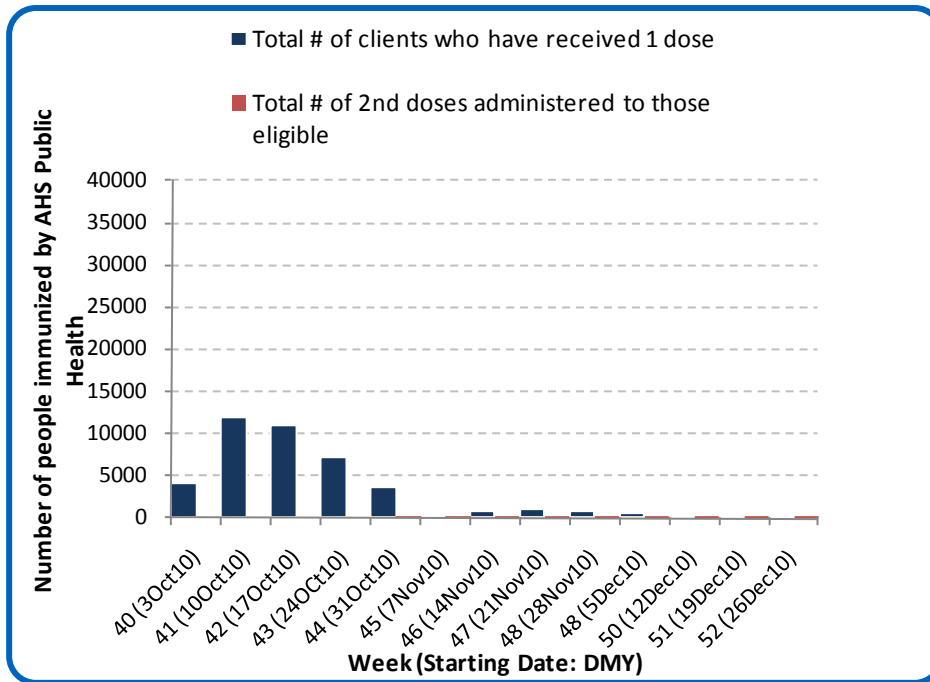
In Week 51 (Dec 19 – 25), the percentage of ILI-related visits to sentinel physician offices by residents of the South Zone was similar to that in Week 50 (Dec 12 - 18). There were no reports of ILI-related visits in Week 52.

Percentage of visits to sentinel offices with lower respiratory tract infection (LRTI)

For the first time this season, there were reports of LRTI-related visits to sentinel physician offices by residents of the South Zone in week 52 (Dec 26, 2010 – Jan 1, 2011), but the LRTI-related visits was only 0.5% of all office visits.

[Back to first page](#)

Figure 2D: Number Immunized by AHS (Public Health), by week, South Zone (2010-2011)



Source: AHS Zones (doses do not include those delivered by external providers)
 Note: Immunization coverage rates will be reported at the end of the influenza season
 For more information on data definitions and sources see [Annex: Data Notes section at the end of this report](#)

Table 2C: AHS (Public Health) Delivered Influenza Immunizations (with Cumulative totals), by priority group, South Zone (2010-2011)

[Back to first page](#)

Priority Group	Number Immunized (Week 52 – Dec 26, 2010 - Jan 1, 2011)	Cumulative Number Immunized (since Oct 3, 2010)
Long term care staff	0	598
Health care workers	2	1,540
Pregnant women	3	289
Residents of long term care	0	728
65 years of age and over	1	15,545
All children 6 months up to and including 23 months*	Dose #1	1,263
	Dose #2	343
All children 24 months up to and including 59 months*	Dose #1	1,877
	Dose #2	77
High risk: 5 years up to and including 8 years*	Dose #1	482
	Dose #2	11
High risk: 9 years up to and including 64 years	3	4,056
Healthy: 5 years up to and including 8 years*	Dose #1	1,417
	Dose #2	35
Healthy: 9 years up to and including 64 years	26	14,346
Total number of clients who have received 1 dose	79	42,141
Total number of 2nd doses administered to those eligible*	32	466

Source: AHS Zones (doses do not include those delivered by external providers)

*Children under 9 years of age who have not received at least one dose of seasonal influenza vaccine in past years require two doses, given at least four weeks apart.

Note: Immunization coverage rates will be reported at the end of the influenza season

For more information on data definitions and sources see [Annex: Data Notes section at the end of this report](#)

SURVEILLANCE AND HEALTH STATUS ASSESSMENT

Public Health Surveillance

Report Date: January 5, 2011

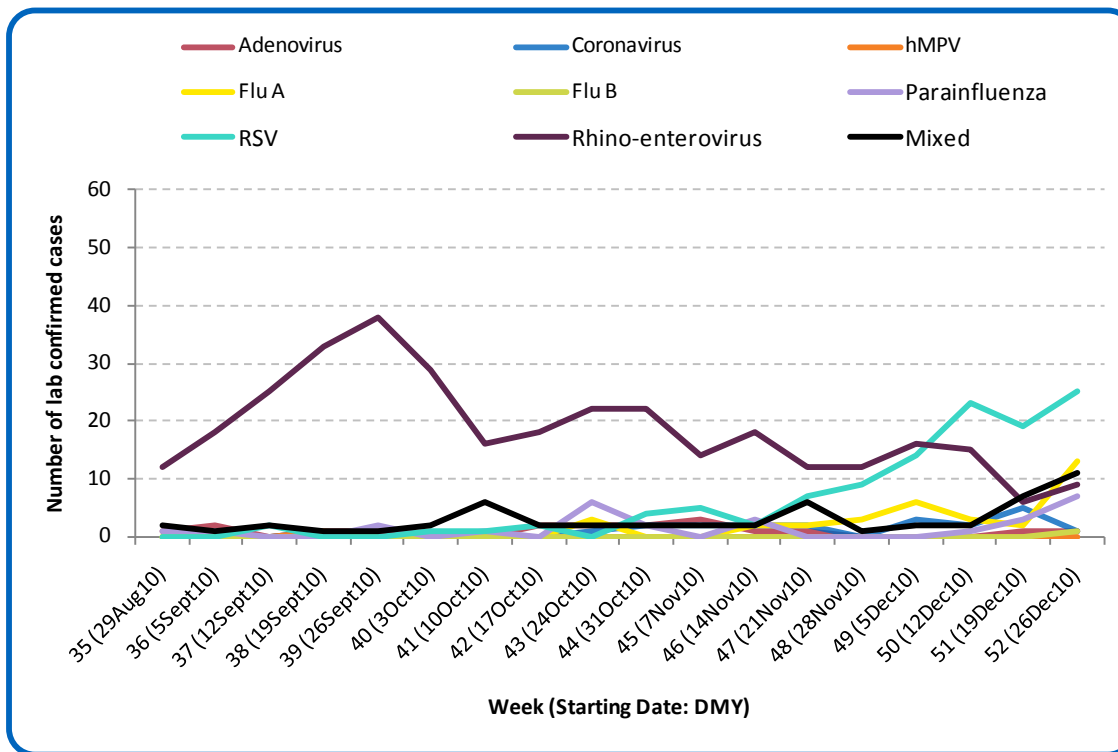
An influenza report targeted to the general public is available at: <http://www.health.alberta.ca/health-info/influenza-evidence.html>

SECTION 3: ZONE 2 - CALGARY

[Back to first page](#)

RSV has increased over the last few weeks and is the predominant virus circulating in Calgary Zone. Most of the laboratory confirmed cases have been in infants two years of age and under. In addition, 11 new cases of influenza were confirmed in Calgary Zone last week, including four cases of influenza A (H1N1) 2009 and seven cases of influenza A (H3). Since the beginning of the season, a total of 32 cases of influenza A have been confirmed in the Calgary Zone.

Figure 3A: Laboratory confirmed respiratory virus cases, by virus type, by week, Calgary Zone (2010-2011)



Sources: DIAL – Provincial Laboratory and the Outbreak Response Toolkit (includes cases with positive respiratory specimens received on or before Jan 1, 2011). For more information on data definitions and sources see [Annex: Data Notes section at the end of this report](#)

SURVEILLANCE AND HEALTH STATUS ASSESSMENT

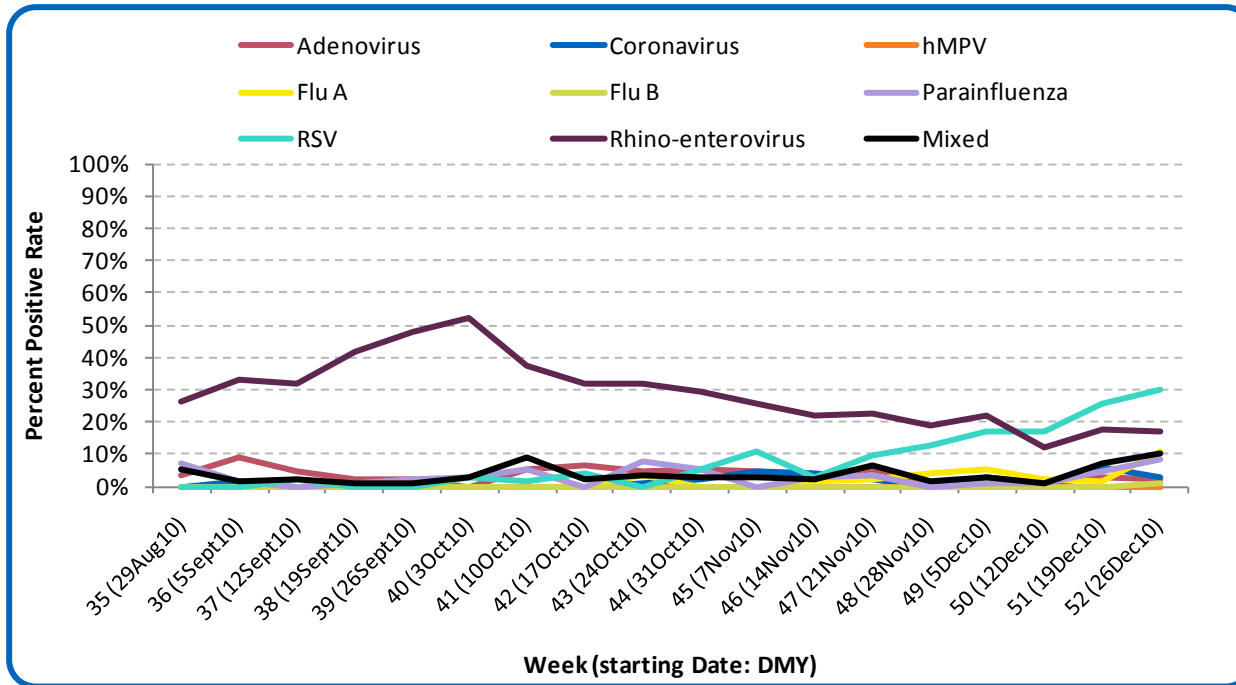
Public Health Surveillance

Report Date: January 5, 2011

An influenza report targeted to the general public is available at: <http://www.health.alberta.ca/health-info/influenza-evidence.html>

[Back to first page](#)

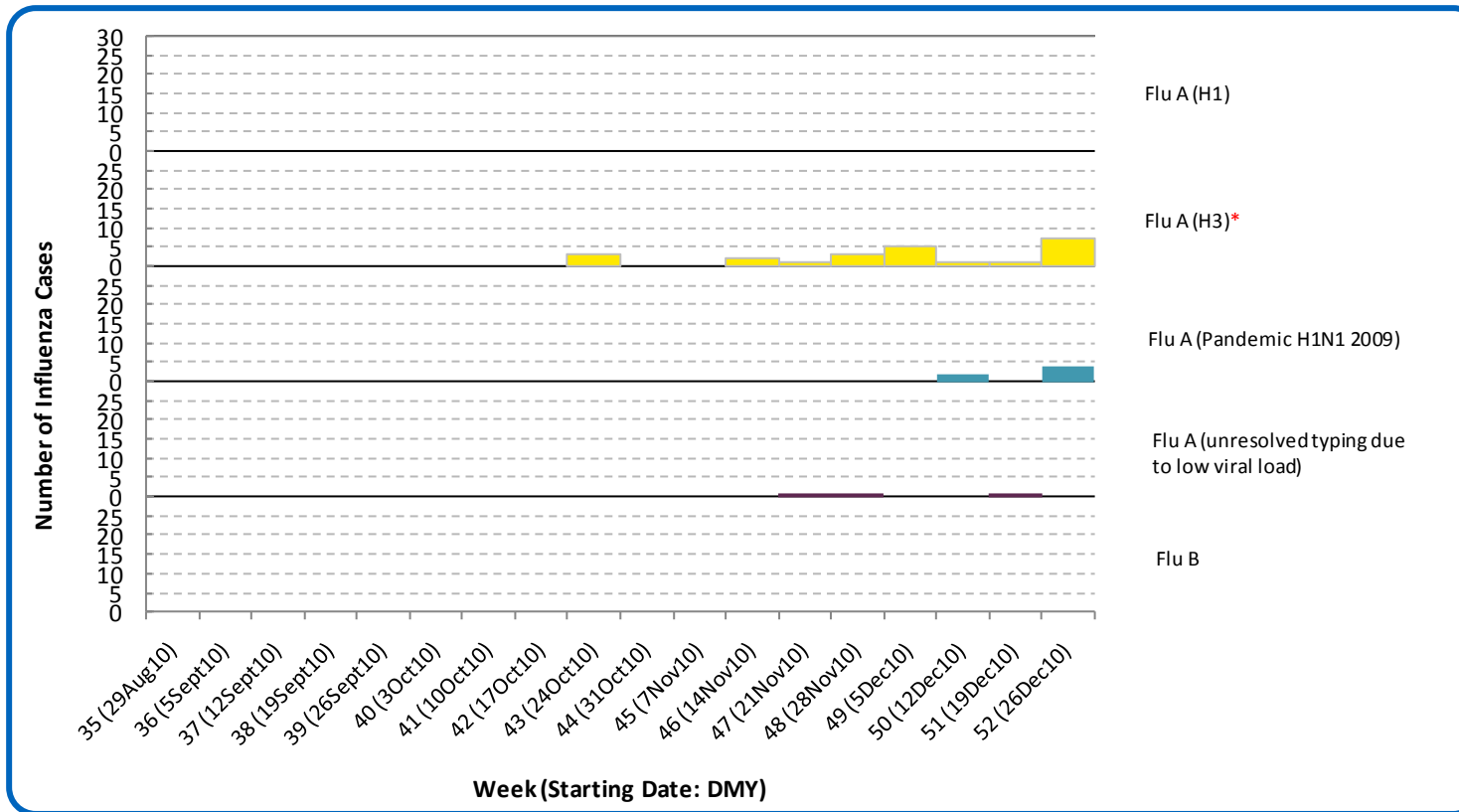
Figure 3B: Respiratory Specimen Percent Positive Rates, by virus type, by week, Calgary Zone (2010-2011)



Source: DIAL – Provincial Laboratory (includes cases with positive respiratory specimens received on or before Jan 1, 2011)
For more information on data definitions and sources see [Annex: Data Notes section at the end of this report](#)

[Back to first page](#)

Figure 3C: Laboratory confirmed Influenza cases, by subtype, by week specimen received, Calgary Zone (2010-2011)



*Note: One specimen received in Week 52 was positive for both RSV and influenza A (H3).

Source: Outbreak Response Toolkit (includes cases with positive respiratory specimens received on or before Jan 1, 2011).

For more information on data definitions and sources see [Annex: Data Notes section at the end of this report](#)

SURVEILLANCE AND HEALTH STATUS ASSESSMENT

Public Health Surveillance

Report Date: January 5, 2011

An influenza report targeted to the general public is available at: <http://www.health.alberta.ca/health-info/influenza-evidence.html>

[Back to first page](#)

Table 3A: New Influenza cases (and age specific rates), by subtype, by age group, Calgary Zone (Week 52: Dec 26, 2010-Jan 1, 2011)

	Flu A (Seasonal-H1)		Flu A (Seasonal-H3)		Flu A (Pandemic H1N1 2009)		Flu A (unresolved typing due to low viral load)		Flu B		Total	
	#	Rate (per 10,000)	#	Rate (per 10,000)	#	Rate (per 10,000)	#	Rate (per 10,000)	#	Rate (per 10,000)	#	Rate (per 10,000)
	0 to <2 years	0	0.0	2	0.5	0	0.0	0	0.0	0	0.0	2
2 to <5 years	0	0.0	1	0.2	1	0.2	0	0.0	0	0.0	2	0.4
5 to <9 years	0	0.0	0	0.0	0	0.0	0	0.0	0	0.0	0	0.0
9 to <18 years	0	0.0	0	0.0	0	0.0	0	0.0	0	0.0	0	0.0
18 to <65 years	0	0.0	3	<0.1	3	0.0	0	0.0	0	0.0	6	0.1
65 to <75 years	0	0.0	1	0.1	0	0.0	0	0.0	0	0.0	1	0.1
75+ years	0	0.0	0	0.0	0	0.0	0	0.0	0	0.0	0	0.0
Total	0	0.0	7	0.1	4	0.0	0	0.0	0	0.0	11	0.1

Table 3B: Cumulative Influenza cases (and age specific rates), by subtype, by age group, Calgary Zone (Aug 29, 2010 – Jan 1, 2011)

	Flu A (Seasonal-H1)		Flu A (Seasonal-H3)		Flu A (Pandemic H1N1 2009)		Flu A (unresolved typing due to low viral load)		Flu B		Total	
	#	Rate (per 10,000)	#	Rate (per 10,000)	#	Rate (per 10,000)	#	Rate (per 10,000)	#	Rate (per 10,000)	#	Rate (per 10,000)
	0 to <2 years	0	0.0	3	0.8	0	0.0	0	0.0	0	0.0	3
2 to <5 years	0	0.0	1	0.2	1	0.2	1	0.2	0	0.0	3	0.6
5 to <9 years	0	0.0	1	0.2	0	0.0	0	0.0	0	0.0	1	0.2
9 to <18 years	0	0.0	1	0.1	0	0.0	1	0.1	0	0.0	2	0.1
18 to <65 years	0	0.0	11	0.1	5	0.1	1	<0.1	0	0.0	17	0.2
65 to <75 years	0	0.0	2	0.3	0	0.0	0	0.0	0	0.0	2	0.3
75+ years	0	0.0	4	0.7	0	0.0	0	0.0	0	0.0	4	0.7
Total	0	0.0	23	0.2	6	<0.1	3	<0.1	0	0.0	32	0.2

Source for tables 3A & 3B: Outbreak Response Toolkit (includes cases with positive respiratory specimens received on or before Jan 1, 2011).

Population data values used to calculate rates are for June 30, 2009 and are estimated using actual population values from the Alberta Health Care Insurance Plan (AHCIP) Registration File as of March 31, 2009.

For more information on data definitions and sources see [Annex: Data Notes section at the end of this report](#)

SURVEILLANCE AND HEALTH STATUS ASSESSMENT

Public Health Surveillance

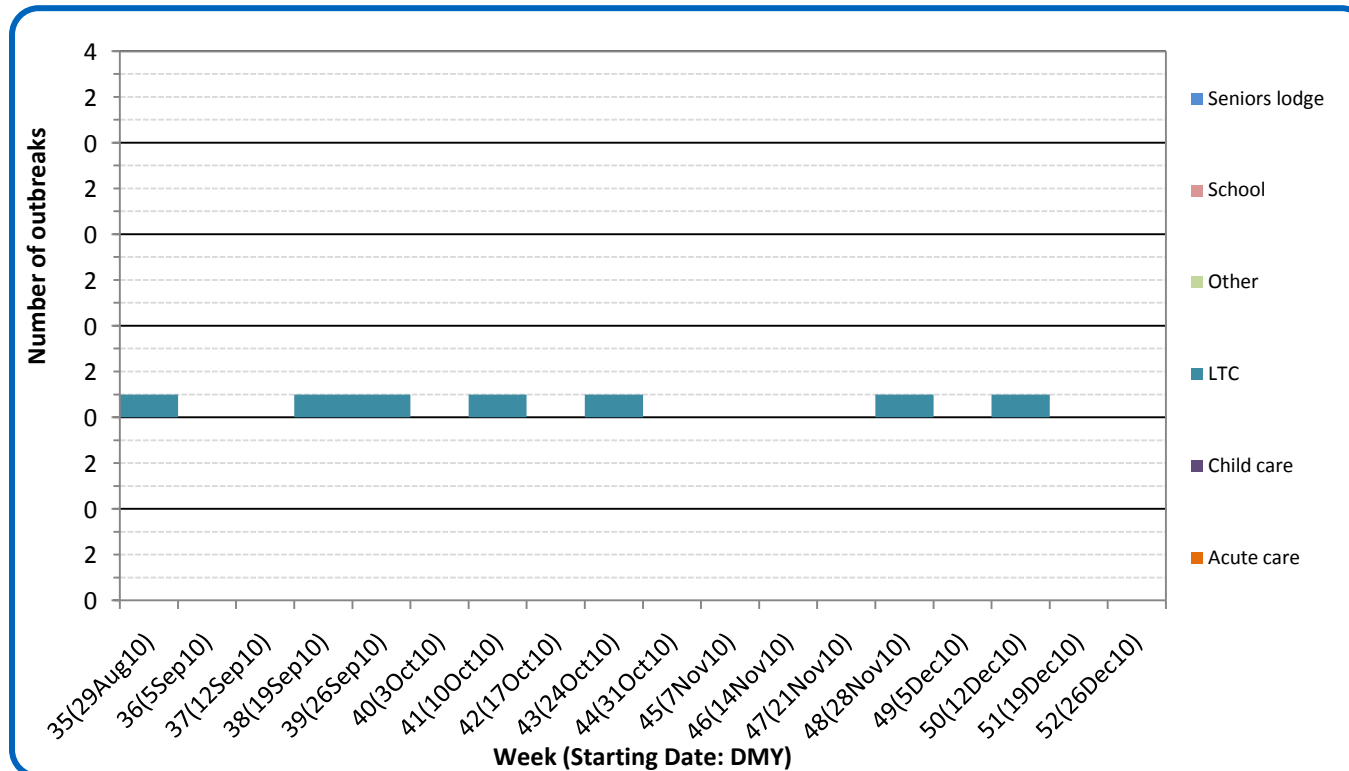
Report Date: January 5, 2011

An influenza report targeted to the general public is available at: <http://www.health.alberta.ca/health-info/influenza-evidence.html>

[Back to first page](#)

One respiratory outbreak attributed to parainfluenza was confirmed in a Calgary Zone long term care facility in Week 50 (Dec 12-18). Another outbreak, occurring in the 52nd week of 2010, also in a Calgary Zone long term care facility, is still pending laboratory confirmation.

Figure 3D: Respiratory outbreaks, by facility type, by onset week, Calgary Zone (2010-2011); school outbreaks may not have a laboratory confirmation)



Source: Alberta Outbreak Reporting Form as of 23:59 on Jan 1, 2011. LTC stands for long term care facility. For more information on data definitions and sources see [Annex: Data Notes section at the end of this report](#)

SURVEILLANCE AND HEALTH STATUS ASSESSMENT

Public Health Surveillance

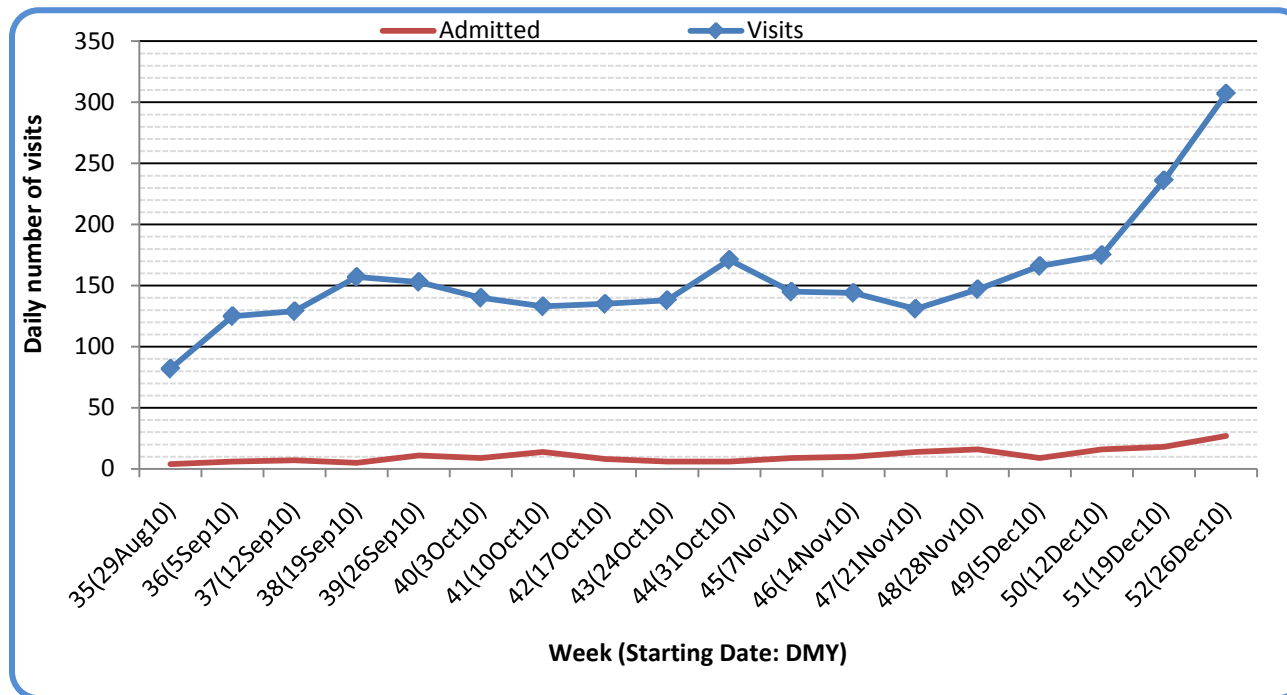
Report Date: January 5, 2011

An influenza report targeted to the general public is available at: <http://www.health.alberta.ca/health-info/influenza-evidence.html>

[Back to first page](#)

The number of visits to emergency departments/urgent care centers by residents of the City of Calgary for symptoms with cough increased significantly in Weeks 51 and 52 (Dec 19, 2010 – Jan 1, 2011) compared to Week 50. The trend is due primarily to an increase in the number of visits by patients in the <2, 18-64, and ≥65 age groups. These visits accounted for 4% of all ED visits in the City of Calgary, the highest it has been this season. The number of hospital admissions and the number of visits of patients with cough symptoms who left ED's without being seen also increased significantly in the same period.

Figure 3E: Visits to urban emergency departments/urgent care centers in the City of Calgary with cough symptoms and admissions to hospitals, by visit week (2010-2011)



Source: Alberta Real Time Syndromic Surveillance Net (ARTSSN) as of 23:59 on Jan 1, 2011.
For more information on data definitions and sources see [Annex: Data Notes section at the end of this report](#)

SURVEILLANCE AND HEALTH STATUS ASSESSMENT

Public Health Surveillance

Report Date: January 5, 2011

An influenza report targeted to the general public is available at: <http://www.health.alberta.ca/health-info/influenza-evidence.html>

[Back to first page](#)

Attack rates in respiratory outbreaks

The parainfluenza outbreak in a Calgary Zone long term care facility had an attack rate of 16%. The outbreak in another long term care facility still pending laboratory confirmation had a preliminary attack rate of 6%.

Influenza-like illness visits and “Left Without Being seen”

The number of visits to urban emergency departments/ urgent care centers (EDs) for influenza-like illness (ILI) in the City of Calgary was 60% higher in Week 52 (Dec 26, 2010 – Jan 1, 2011) compared to Week 50, and the percentage of ILI positive visits reached 8% of all screened visits. The number of hospital admissions of ILI patients has been relatively stable since Week 49, but the number of visits of patients with ILI who left EDs without being seen in Week 52 nearly doubled from what it was in Week 50.

Respiratory related calls to Health Link Alberta

The number of calls to Health Link Alberta for cough or breathing difficulties by residents of Calgary Zone was 58% higher in Week 52 (Dec 26, 2010 – Jan 1, 2011) compared to Week 50, reaching the highest it has been this season. This trend is due primarily to an increased call volume on behalf of children younger than 2 years old. This trend is consistent with the emergency visits for cough symptoms.

Percentage of visits to sentinel offices with influenza-like illness (ILI)

The percentage of ILI-related visits to sentinel physician offices by residents of Calgary Zone in Week 52 (Dec 26, 2010 – Jan 1, 2011) was twice as high as it was in Week 50 (Dec 12 - 18), reaching the highest it has been this season.

Percentage of visits to sentinel offices with lower respiratory tract infection (LRTI)

The percentage of LRTI-related visits to sentinel physician offices by residents of Calgary Zone in Week 52 (Dec 26, 2010 – Jan 1, 2011) was comparable to that in Week 50 (Dec 12-18), remaining at a high level.

The combined percentage for ILI- and LRTI-related visits was 33% higher in Week 52 compared to Week 50. At just over 2%, it is the highest it has been this season. The recent increase is consistent with the increase in ED visits and Health Link Alberta calls for similar symptoms.

SURVEILLANCE AND HEALTH STATUS ASSESSMENT

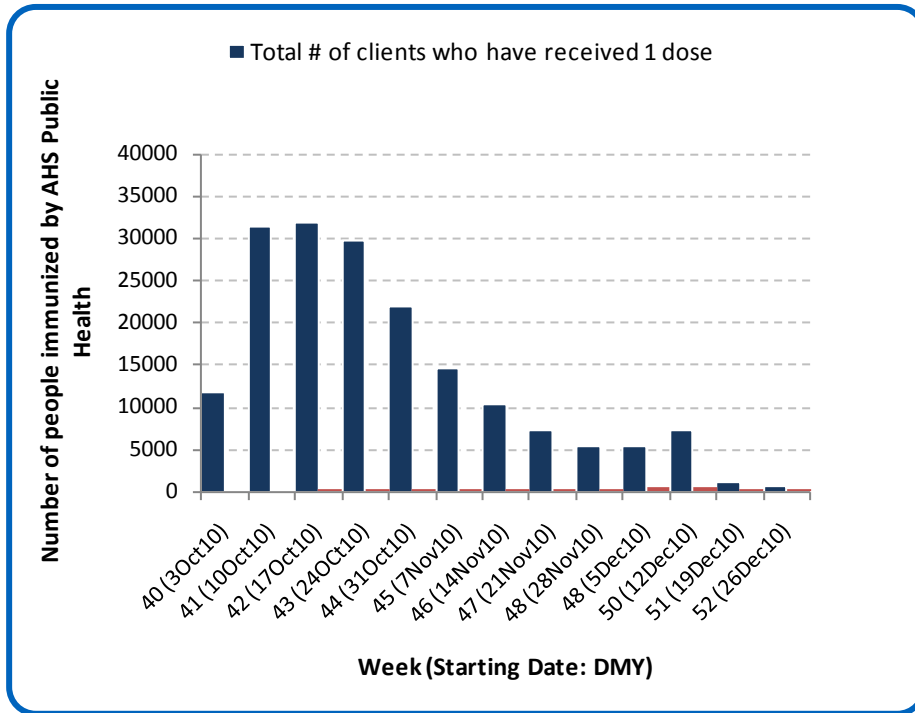
Public Health Surveillance

Report Date: January 5, 2011

An influenza report targeted to the general public is available at: <http://www.health.alberta.ca/health-info/influenza-evidence.html>

[Back to first page](#)

Figure 3F: Number Immunized by AHS (Public Health), by week, Calgary Zone (2010-2011)



Source: AHS Zones (doses do not include those delivered by external providers)
 Note: Immunization coverage rates will be reported at the end of the influenza season
 For more information on data definitions and sources see [Annex: Data Notes section at the end of this report](#)

SURVEILLANCE AND HEALTH STATUS ASSESSMENT

Public Health Surveillance

Report Date: January 5, 2011

An influenza report targeted to the general public is available at: <http://www.health.alberta.ca/health-info/influenza-evidence.html>

Table 3C: AHS (Public Health) Delivered Influenza Immunizations (with Cumulative totals), by priority group, Calgary Zone (2010-2011)

[Back to first page](#)

Priority Group	Number Immunized (Week 52 – Dec 26, 2010 - Jan 1, 2011)	Cumulative Number Immunized (since Oct 3, 2010)
Long term care staff	0	441
Health care workers	7	5,196
Pregnant women	8	1,750
Residents of long term care	0	705
65 years of age and over	5	44,291
All children 6 months up to and including 23 months*	Dose #1	184
	Dose #2	70
All children 24 months up to and including 59 months*	Dose #1	60
	Dose #2	7
High risk: 5 years up to and including 8 years*	Dose #1	2
	Dose #2	0
High risk: 9 years up to and including 64 years	33	19,387
Healthy: 5 years up to and including 8 years*	Dose #1	29
	Dose #2	1
Healthy: 9 years up to and including 64 years	232	78,820
Total number of clients who have received 1 dose	560	178,855
Total number of 2nd doses administered to those eligible*	78	2,377

Source: AHS Zones (doses do not include those delivered by external providers)

*Children under 9 years of age who have not received at least one dose of seasonal influenza vaccine in past years require two doses, given at least four weeks apart.

Note: Immunization coverage rates will be reported at the end of the influenza season

For more information on data definitions and sources see [Annex: Data Notes section at the end of this report](#)

SURVEILLANCE AND HEALTH STATUS ASSESSMENT

Public Health Surveillance

Report Date: January 5, 2011

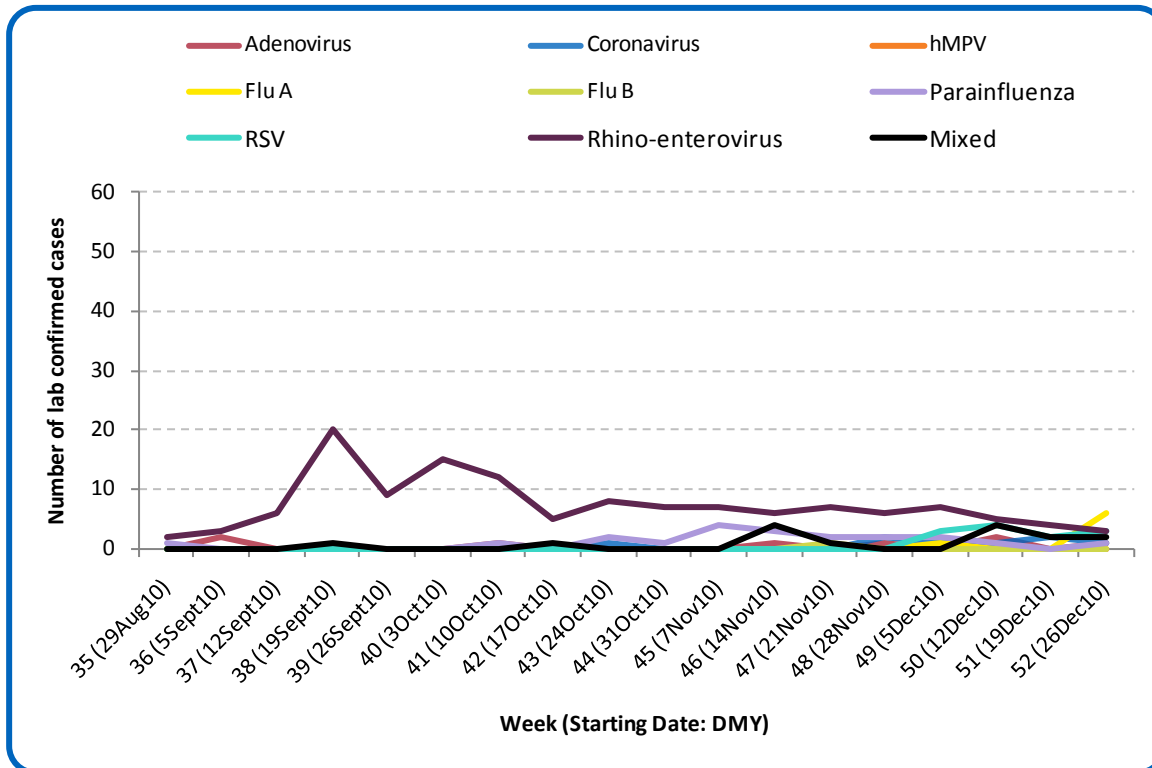
An influenza report targeted to the general public is available at: <http://www.health.alberta.ca/health-info/influenza-evidence.html>

SECTION 4: ZONE 3 - CENTRAL

[Back to first page](#)

Four new cases of influenza A (H3) were confirmed in Central Zone last week, including two cases in adults aged 18 to less than 65 years and two cases in adults aged 65 to less than 75 years. Since the beginning of the season, a total of six Influenza cases have been confirmed in Central Zone.

Figure 4A: Laboratory confirmed respiratory virus cases, by virus type, by week, Central Zone (2010-2011)



Sources: DIAL – Provincial Laboratory and the Outbreak Response Toolkit (includes cases with positive respiratory specimens received on or before Jan 1, 2011). For more information on data definitions and sources see [Annex: Data Notes section at the end of this report](#)

SURVEILLANCE AND HEALTH STATUS ASSESSMENT

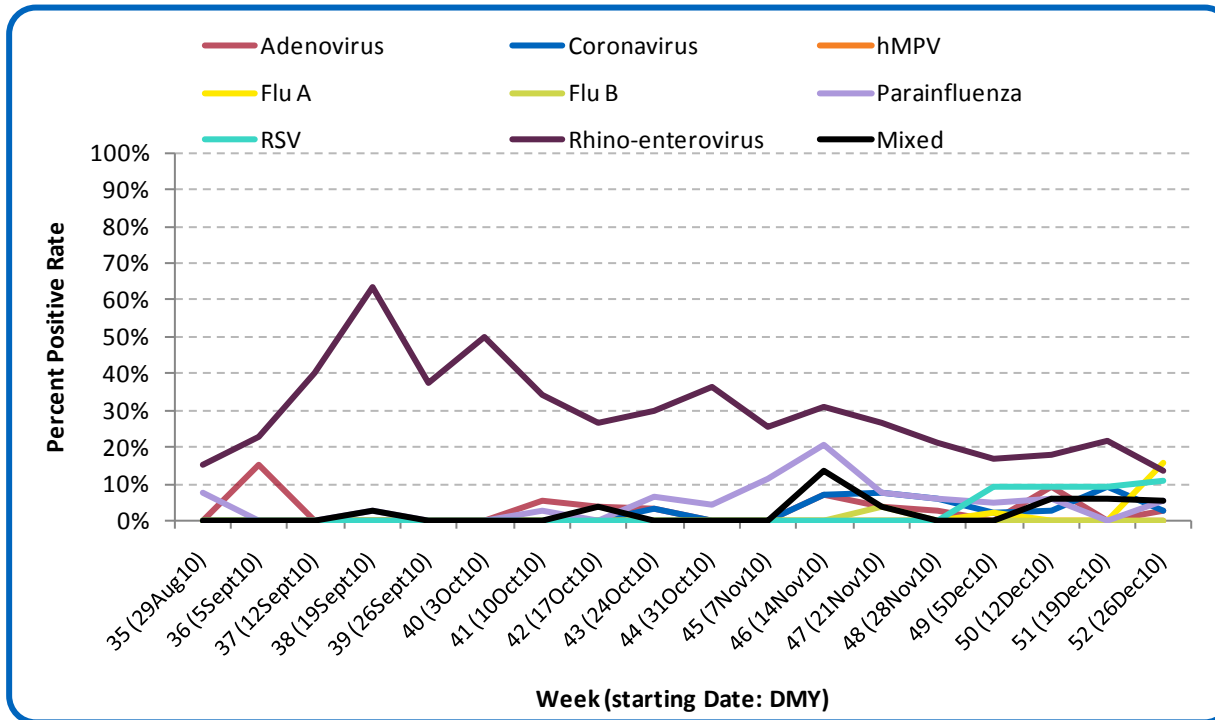
Public Health Surveillance

Report Date: January 5, 2011

An influenza report targeted to the general public is available at: <http://www.health.alberta.ca/health-info/influenza-evidence.html>

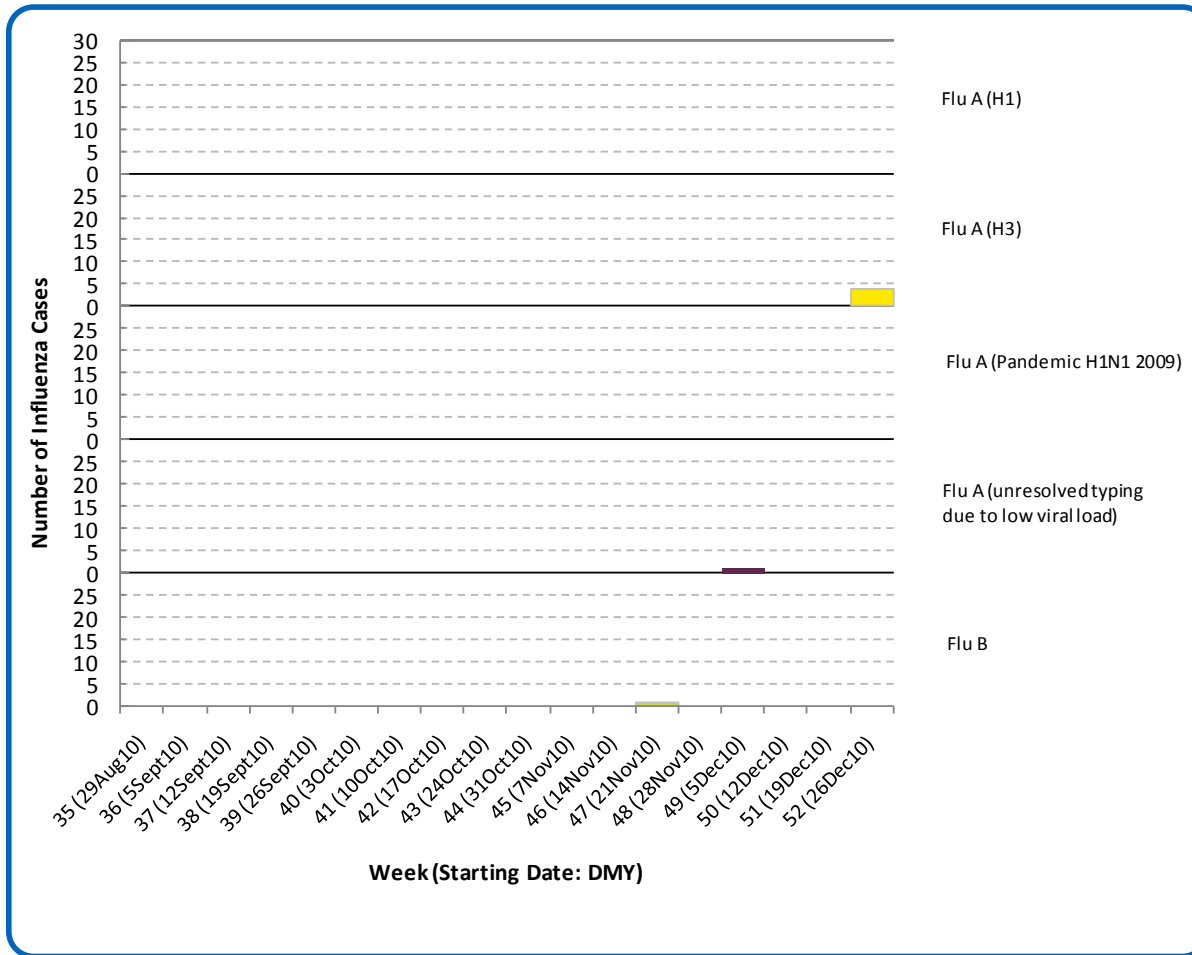
Figure 4B: Respiratory Specimen Percent Positive Rates, by virus type, by week, Central Zone (2010-2011)

[Back to first page](#)



Source: DIAL – Provincial Laboratory (includes cases with positive respiratory specimens received on or before Jan 1, 2011)
For more information on data definitions and sources see [Annex: Data Notes section at the end of this report](#)

Figure 4C: Laboratory confirmed Influenza cases, by subtype, by week specimen received, Central Zone (2010-2011)



Source: Outbreak Response Toolkit (includes cases with positive respiratory specimens received on or before Jan 1, 2011). For more information on data definitions and sources see [Annex: Data Notes section at the end of this report](#)

SURVEILLANCE AND HEALTH STATUS ASSESSMENT

Public Health Surveillance

Report Date: January 5, 2011

An influenza report targeted to the general public is available at: <http://www.health.alberta.ca/health-info/influenza-evidence.html>

[Back to first page](#)

Table 4A: New Influenza cases (and age specific rates), by subtype, by age group, Central Zone (Week 52: Dec 26, 2010-Jan 1, 2011)

	Flu A (Seasonal-H1)		Flu A (Seasonal-H3)		Flu A (Pandemic H1N1 2009)		Flu A (unresolved typing due to low viral load)		Flu B		Total	
	#	Rate (per 10,000)	#	Rate (per 10,000)	#	Rate (per 10,000)	#	Rate (per 10,000)	#	Rate (per 10,000)	#	Rate (per 10,000)
0 to <2 years	0	0.0	0	0.0	0	0.0	0	0.0	0	0.0	0	0.0
2 to <5 years	0	0.0	0	0.0	0	0.0	0	0.0	0	0.0	0	0.0
5 to <9 years	0	0.0	0	0.0	0	0.0	0	0.0	0	0.0	0	0.0
9 to <18 years	0	0.0	0	0.0	0	0.0	0	0.0	0	0.0	0	0.0
18 to <65 years	0	0.0	2	0.1	0	0.0	0	0.0	0	0.0	2	0.1
65 to <75 years	0	0.0	2	0.7	0	0.0	0	0.0	0	0.0	2	0.7
75+ years	0	0.0	0	0.0	0	0.0	0	0.0	0	0.0	0	0.0
Total	0	0.0	4	0.1	0	0.0	0	0.0	0	0.0	4	0.1

Table 4B: Cumulative Influenza cases (and age specific rates), by subtype, by age group, Central Zone (Aug 29, 2010 – Jan 1, 2011)

	Flu A (Seasonal-H1)		Flu A (Seasonal-H3)		Flu A (Pandemic H1N1 2009)		Flu A (unresolved typing due to low viral load)		Flu B		Total	
	#	Rate (per 10,000)	#	Rate (per 10,000)	#	Rate (per 10,000)	#	Rate (per 10,000)	#	Rate (per 10,000)	#	Rate (per 10,000)
0 to <2 years	0	0.0	0	0.0	0	0.0	0	0.0	0	0.0	0	0.0
2 to <5 years	0	0.0	0	0.0	0	0.0	0	0.0	0	0.0	0	0.0
5 to <9 years	0	0.0	0	0.0	0	0.0	0	0.0	0	0.0	0	0.0
9 to <18 years	0	0.0	0	0.0	0	0.0	0	0.0	0	0.0	0	0.0
18 to <65 years	0	0.0	2	0.1	0	0.0	1	<0.1	1	<0.1	4	0.1
65 to <75 years	0	0.0	2	0.7	0	0.0	0	0.0	0	0.0	2	0.7
75+ years	0	0.0	0	0.0	0	0.0	0	0.0	0	0.0	0	0.0
Total	0	0.0	4	0.1	0	0.0	1	<0.1	1	<0.1	6	0.1

Source for Tables 4A & 4B: Outbreak Response Toolkit (includes cases with positive respiratory specimens received on or before *Jan 1, 2011*).

Population data values used to calculate rates are for June 30, 2009 and are estimated using actual population values from the Alberta Health Care Insurance Plan (AHCIP) Registration File as of March 31, 2009.

For more information on data definitions and sources see Annex: Data Notes section at the end of this report

SURVEILLANCE AND HEALTH STATUS ASSESSMENT

Public Health Surveillance

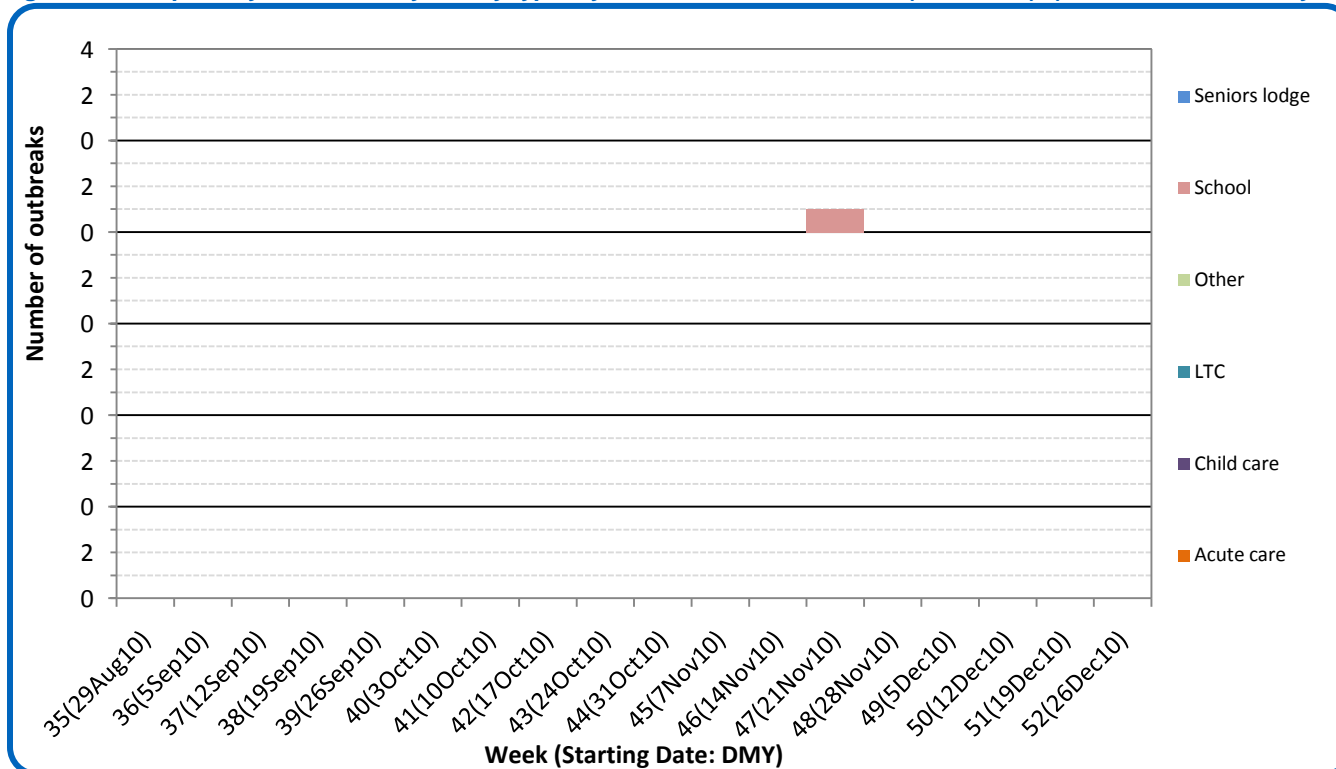
Report Date: January 5, 2011

An influenza report targeted to the general public is available at: <http://www.health.alberta.ca/health-info/influenza-evidence.html>

[Back to first page](#)

There have been no new laboratory confirmed respiratory outbreaks in Central Zone, however, one respiratory outbreak in a seniors' lodge/assisted living facility with a symptom onset date of Dec 30, 2010 is currently pending laboratory confirmation.

Figure 4D: Respiratory outbreaks, by facility type, by onset week, Central Zone (2010-2011); (school outbreaks may not have a laboratory confirmation)



Source: Alberta Outbreak Reporting Form as of 23:59 on Jan 1, 2011.

For more information on data definitions and sources see Annex: Data Notes section at the end of this report. LTC stands for long term care facility.

SURVEILLANCE AND HEALTH STATUS ASSESSMENT

Public Health Surveillance

Report Date: January 5, 2011

An influenza report targeted to the general public is available at: <http://www.health.alberta.ca/health-info/influenza-evidence.html>

[Back to first page](#)

Attack Rates in respiratory outbreaks

The respiratory outbreak in a seniors' lodge/assisted living facility pending laboratory confirmation had a preliminary attack rate of 6%.

Influenza-like illness visits and “Left Without Being seen”

There are no data available from this zone.

Respiratory related calls to Health Link Alberta

The number of calls to Health Link Alberta by residents of Central Zone for cough or breathing difficulties was 6% lower in Week 52 (Dec 26, 2010 – Jan 1, 2011) compared to Week 50.

Percentage of visits to sentinel offices with Influenza-like illness (ILI)

There were reports of ILI-related visits to sentinel physician offices by residents of Central Zone in Week 51 (Dec 19 - 25), but the percentage was very low. No ILI-related visits were reported for Week 52 (Dec 26, 2010 – Jan 1, 2011).

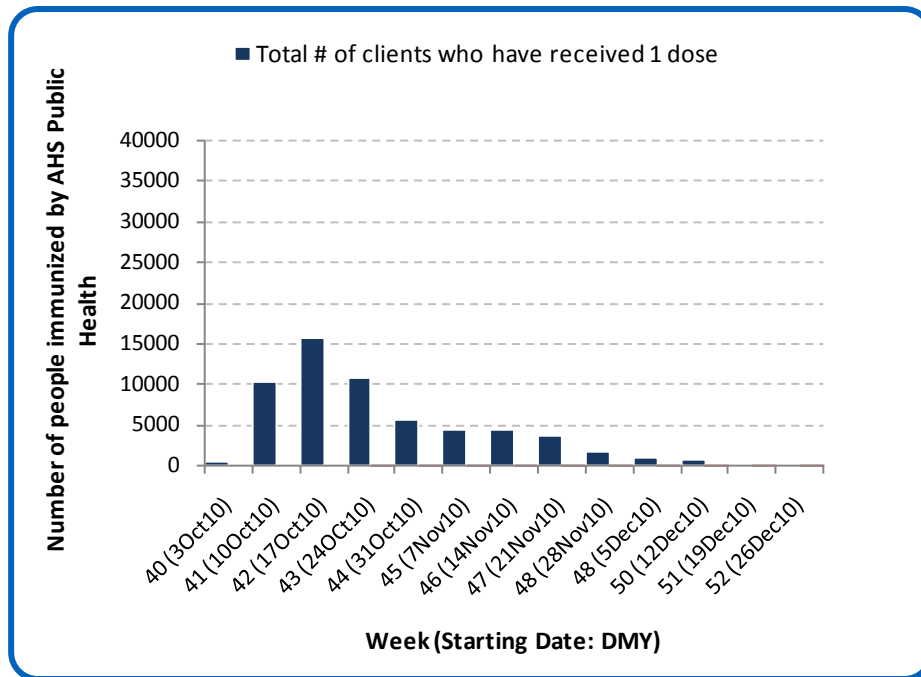
Percentage of visits to sentinel offices with lower respiratory tract infection (LTRI)

The percentage of LTRI-related visits to sentinel physician offices by residents of Central Zone was close to 1% in Weeks 51 (Dec 19 - 25) and 52 (Dec 26, 2010 – Jan 1, 2011).

The combined percentage of ILI- and LTRI-related visits to sentinel physician offices by residents of Central Zone was just over 1% in Weeks 51 and 52.

[Back to first page](#)

Figure 4E: Number Immunized by AHS (Public Health), by week, Central Zone (2010-2011)



Source: AHS Zones (doses do not include those delivered by external providers)
 Note: Immunization coverage rates will be reported at the end of the influenza season
 For more information on data definitions and sources see [Annex: Data Notes section at the end of this report](#)

[Back to first page](#)

Table 4C: AHS (Public Health) Delivered Influenza Immunizations (with Cumulative totals), by priority group, Central Zone (2010-2011)

Priority Group	Number Immunized (Week 52 – Dec 26, 2010 - Jan 1, 2011)	Cumulative Number Immunized (since Oct 3, 2010)
Long term care staff	1	397
Health care workers	1	2,484
Pregnant women	1	410
Residents of long term care	0	1,099
65 years of age and over	4	21,928
All children 6 months up to and including 23 months*	Dose #1	1,789
	Dose #2	490
All children 24 months up to and including 59 months*	Dose #1	2,129
	Dose #2	118
High risk: 5 years up to and including 8 years*	Dose #1	608
	Dose #2	22
High risk: 9 years up to and including 64 years	10	6,716
Healthy: 5 years up to and including 8 years*	Dose #1	1,865
	Dose #2	54
Healthy: 9 years up to and including 64 years	20	20,207
Total number of clients who have received 1 dose	61	59,632
Total number of 2nd doses administered to those eligible*	20	684

Source: AHS Zones (doses do not include those delivered by external providers)

*Children under 9 years of age who have not received at least one dose of seasonal influenza vaccine in past years require two doses, given at least four weeks apart.

Note: Immunization coverage rates will be reported at the end of the influenza season

For more information on data definitions and sources see [Annex: Data Notes section at the end of this report](#)

SURVEILLANCE AND HEALTH STATUS ASSESSMENT

Public Health Surveillance

Report Date: January 5, 2011

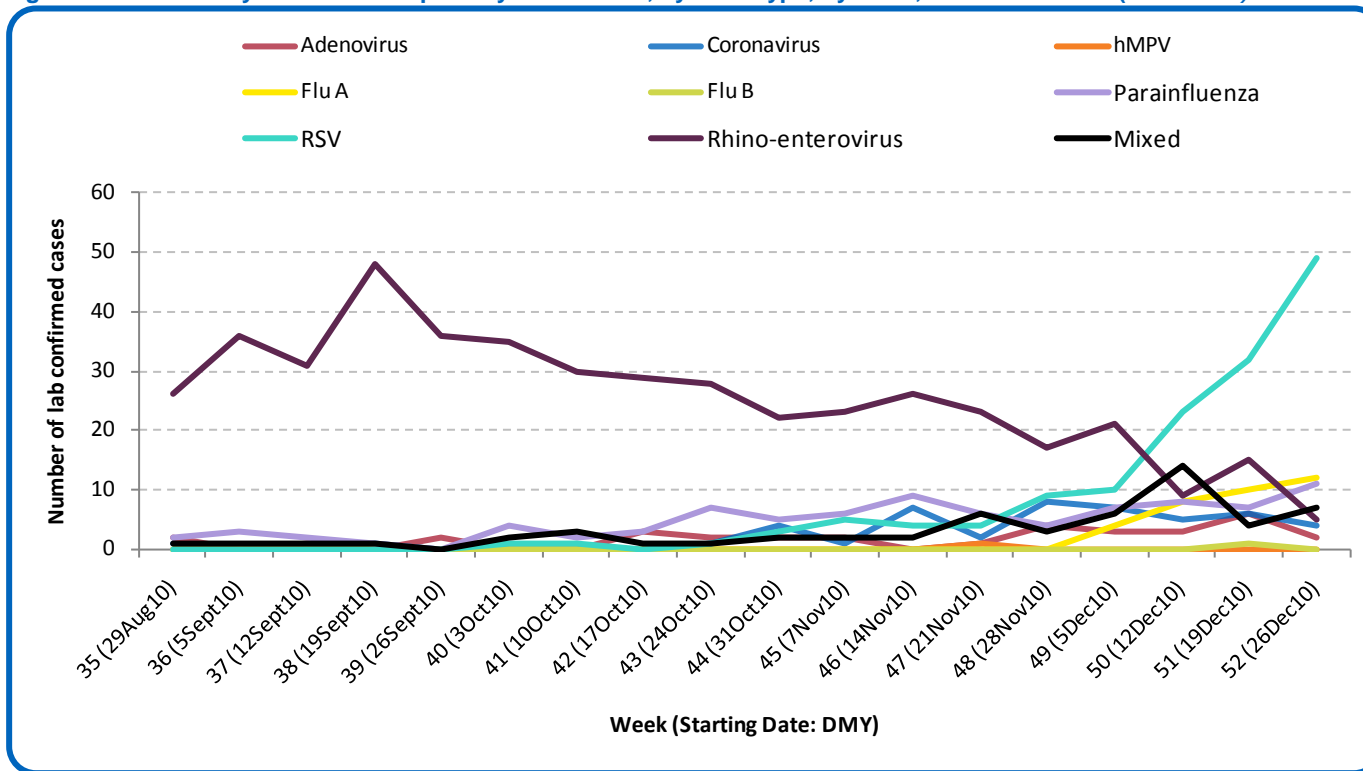
An influenza report targeted to the general public is available at: <http://www.health.alberta.ca/health-info/influenza-evidence.html>

SECTION 5: ZONE 4 – EDMONTON

[Back to first page](#)

RSV has increased dramatically in Edmonton over the last few weeks and is the predominant respiratory virus circulating in the Edmonton Zone, with most laboratory confirmed cases occurring in infants two years of age and under. In addition, there were 11 new cases of influenza A confirmed last week (10 were sub-typed as H3 and the other case had unresolved sub-typing due to low viral load). The new influenza cases include four infants under the age of two years, two children aged two to less than nine years, three adults aged 18 to less than 65 years of age, and two in adults aged 65 or over. This season, there have been a total of 33 Influenza cases confirmed in the Edmonton Zone.

Figure 5A: Laboratory confirmed respiratory virus cases, by virus type, by week, Edmonton Zone (2010-2011)



Sources: DIAL – Provincial Laboratory and the Outbreak Response Toolkit (includes cases with positive respiratory specimens received on or before Jan 1, 2011). For more information on data definitions and sources see [Annex: Data Notes section at the end of this report](#)

SURVEILLANCE AND HEALTH STATUS ASSESSMENT

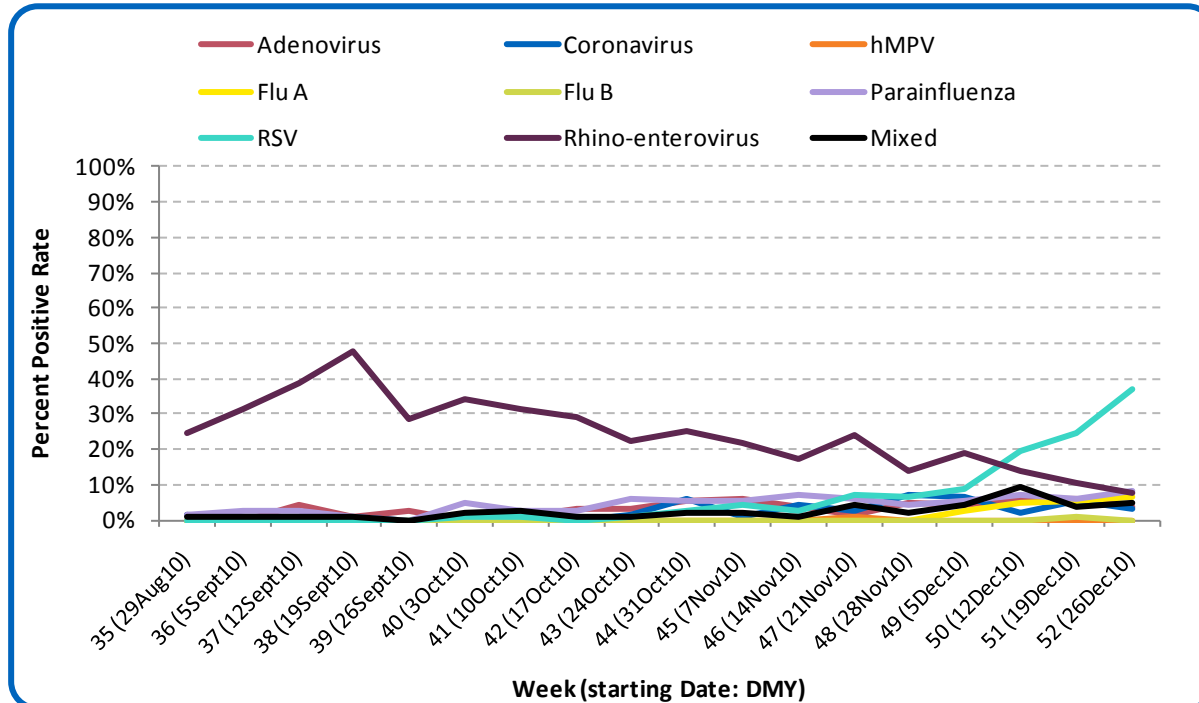
Public Health Surveillance

Report Date: January 5, 2011

An influenza report targeted to the general public is available at: <http://www.health.alberta.ca/health-info/influenza-evidence.html>

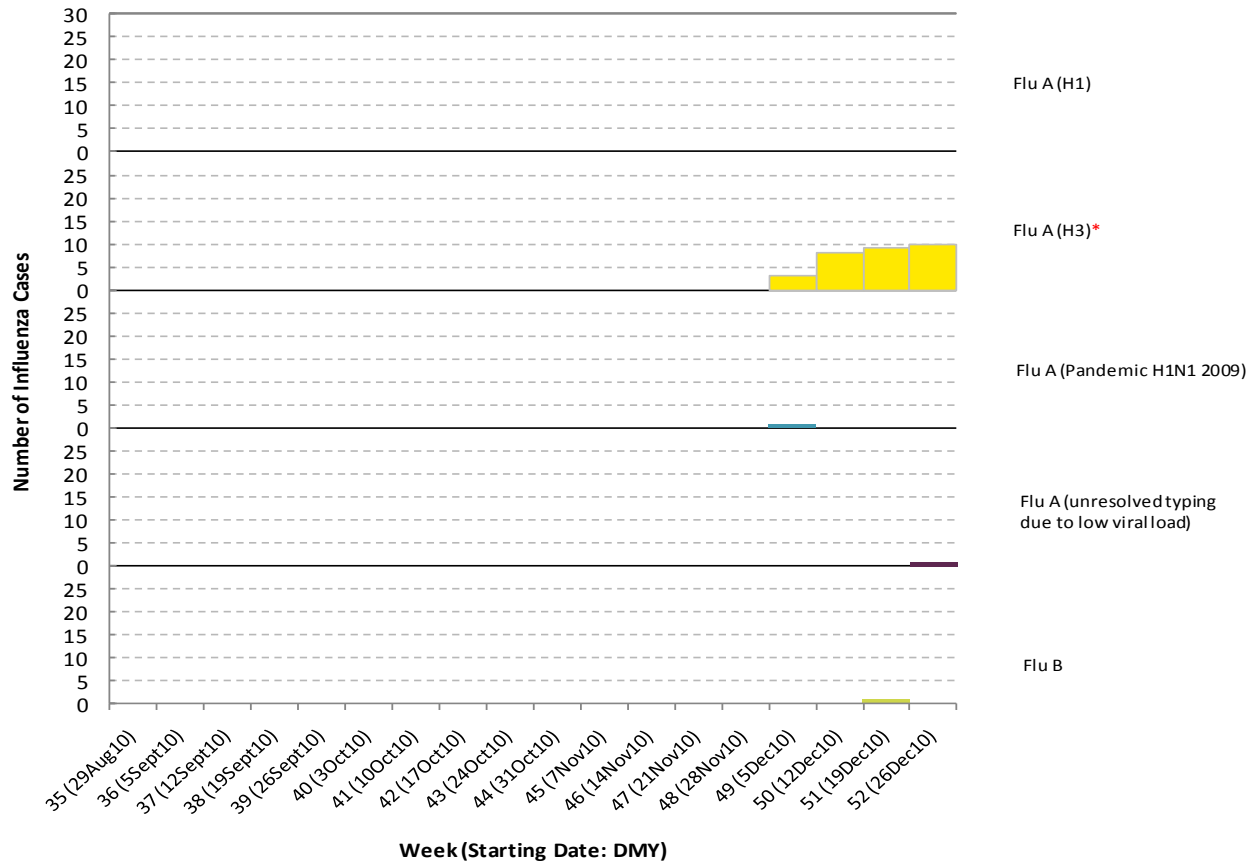
[Back to first page](#)

Figure 5B: Respiratory Specimen Percent Positive Rates, by virus type, by week, Edmonton Zone (2010-2011)



Source: DIAL – Provincial Laboratory (includes cases with positive respiratory specimens received on or before Jan 1, 2011)
For more information on data definitions and sources see [Annex: Data Notes section at the end of this report](#)

Figure 5C: Laboratory confirmed Influenza cases, by subtype, by week specimen received, Edmonton Zone (2010-2011)



*Note: One specimen received in Week 52 was positive for both RSV and influenza A (H3).

Source: Outbreak Response Toolkit (includes cases with positive respiratory specimens received on or before Jan 1, 2011).

For more information on data definitions and sources see [Annex: Data Notes section at the end of this report](#)

SURVEILLANCE AND HEALTH STATUS ASSESSMENT

Public Health Surveillance

Report Date: January 5, 2011

An influenza report targeted to the general public is available at: <http://www.health.alberta.ca/health-info/influenza-evidence.html>

[Back to first page](#)

Table 5A: New Influenza cases (and age specific rates), by subtype, by age group, Edmonton Zone (Week 52: Dec 26, 2010-Jan 1, 2011)

	Flu A (Seasonal-H1)		Flu A (Seasonal-H3)		Flu A (Pandemic H1N1 2009)		Flu A (unresolved typing due to low viral load)		Flu B		Total	
	#	Rate (per 10,000)	#	Rate (per 10,000)	#	Rate (per 10,000)	#	Rate (per 10,000)	#	Rate (per 10,000)	#	Rate (per 10,000)
0 to <2 years	0	0.0	3	1.0	0	0.0	1	0.3	0	0.0	4	1.3
2 to <5 years	0	0.0	1	0.2	0	0.0	0	0.0	0	0.0	1	0.2
5 to <9 years	0	0.0	1	0.2	0	0.0	0	0.0	0	0.0	1	0.2
9 to <18 years	0	0.0	0	0.0	0	0.0	0	0.0	0	0.0	0	0.0
18 to <65 years	0	0.0	3	<0.1	0	0.0	0	0.0	0	0.0	3	<0.1
65 to <75 years	0	0.0	1	0.1	0	0.0	0	0.0	0	0.0	1	0.1
75+ years	0	0.0	1	0.2	0	0.0	0	0.0	0	0.0	1	0.2
Total	0	0.0	10	0.1	0	0.0	1	0.0	0	0.0	11	0.1

Table 5B: Cumulative Influenza cases (and age specific rates), by subtype, by age group, Edmonton Zone (Aug 29, 2010 – Jan 1, 2011)

	Flu A (Seasonal-H1)		Flu A (Seasonal-H3)		Flu A (Pandemic H1N1 2009)		Flu A (unresolved typing due to low viral load)		Flu B		Total	
	#	Rate (per 10,000)	#	Rate (per 10,000)	#	Rate (per 10,000)	#	Rate (per 10,000)	#	Rate (per 10,000)	#	Rate (per 10,000)
0 to <2 years	0	0.0	5	1.7	0	0.0	1	0.3	1	0.3	7	2.3
2 to <5 years	0	0.0	4	1.0	0	0.0	0	0.0	0	0.0	4	1.0
5 to <9 years	0	0.0	2	0.4	0	0.0	0	0.0	0	0.0	2	0.4
9 to <18 years	0	0.0	0	0.0	0	0.0	0	0.0	0	0.0	0	0.0
18 to <65 years	0	0.0	9	0.1	1	<0.1	0	0.0	0	0.0	10	0.1
65 to <75 years	0	0.0	3	0.4	0	0.0	0	0.0	0	0.0	3	0.4
75+ years	0	0.0	7	1.2	0	0.0	0	0.0	0	0.0	7	1.2
Total	0	0.0	30	0.3	1	<0.1	1	0.0	1	0.0	33	0.3

Source for tables 5A & 5B: Outbreak Response Toolkit (includes cases with positive respiratory specimens received on or before Jan 1, 2011).

Population data values used to calculate rates are for June 30, 2009 and are estimated using actual population values from the Alberta Health Care Insurance Plan (AHCIP) Registration File as of March 31, 2009.

For more information on data definitions and sources see [Annex: Data Notes section at the end of this report](#)

SURVEILLANCE AND HEALTH STATUS ASSESSMENT

Public Health Surveillance

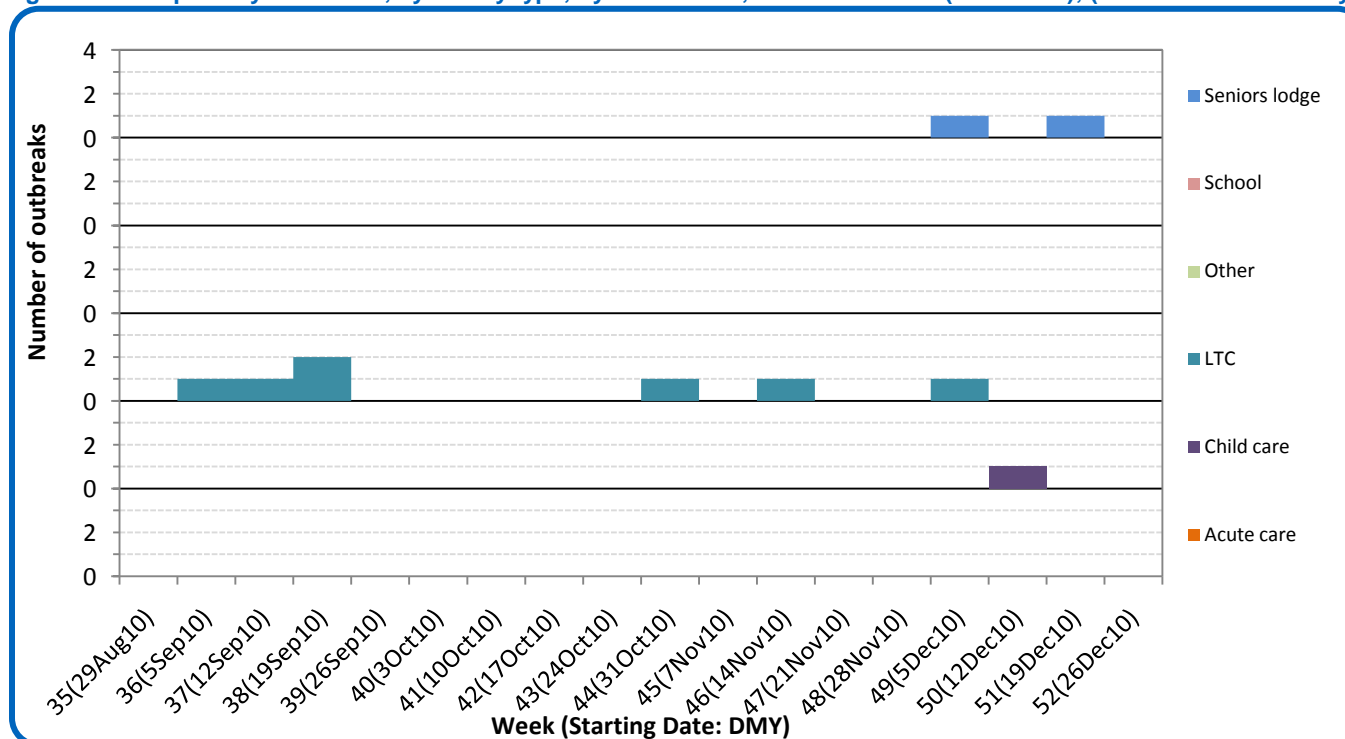
Report Date: January 5, 2011

An influenza report targeted to the general public is available at: <http://www.health.alberta.ca/health-info/influenza-evidence.html>

[Back to first page](#)

Two laboratory-confirmed respiratory outbreaks were reported in Edmonton Zone since Week 49 (Dec 5 -11). One, described in the last report, occurred in a daycare facility in Week 50 (Dec 12 – 18) and was caused by RSV. The other occurred in a seniors’ lodge/assisted living facility in Week 51 (Dec 19 – 25) and was caused by Influenza A (H3). This is the second influenza outbreak reported from this Zone this season.

Figure 5D: Respiratory outbreaks, by facility type, by onset week, Edmonton Zone (2010-2011); (school outbreaks may not have a laboratory confirmation)



Source: Alberta Outbreak Reporting Form as of 23:59 on Jan 1, 2011. LTC stands for long term care facility. For more information on data definitions and sources see [Annex: Data Notes section at the end of this report](#)

SURVEILLANCE AND HEALTH STATUS ASSESSMENT

Public Health Surveillance

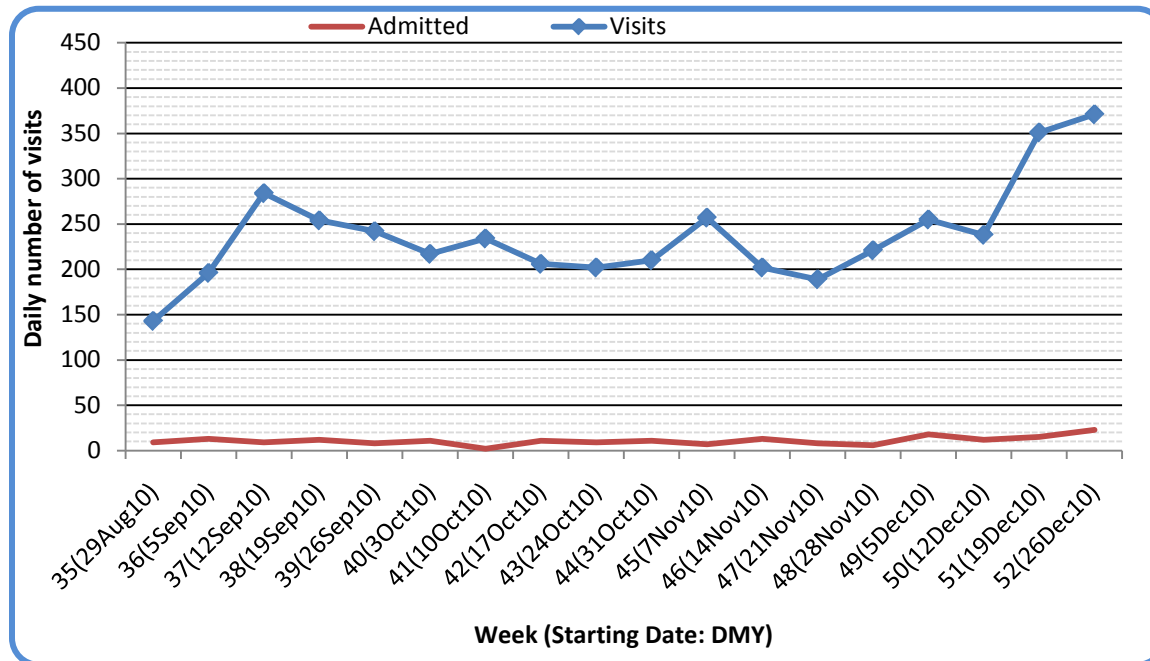
Report Date: January 5, 2011

An influenza report targeted to the general public is available at: <http://www.health.alberta.ca/health-info/influenza-evidence.html>

[Back to first page](#)

The number of visits to nine emergency departments/urgent care centers and the number of hospital admissions in Edmonton Zone for cough/congestion both increased significantly in Weeks 51 and 52 (Dec 19, 2010 – Jan 1, 2011) compared to Week 50. This was due primarily to visits and admissions by children younger than 2 years old and adults 18 – 64 years old. Visits for these conditions accounted for 5% of all visits, the highest it has been this season. The number of admissions for these conditions in Week 52 nearly doubled from Week 50 and the number of visits of patients who left the ED’s without being seen in Week 52 more than tripled from Week 50.

Figure 5E: Visits to emergency departments/urgent care centers for cough/congestion and admissions to hospitals, Edmonton Zone, by visit week (2010-2011)



Source: Alberta Real Time Syndromic Surveillance (ARTSSN) as of 23:59 on Jan 1, 2011.
For more information on data definitions and sources see [Annex: Data Notes section at the end of this report](#)

SURVEILLANCE AND HEALTH STATUS ASSESSMENT

Public Health Surveillance

Report Date: January 5, 2011

An influenza report targeted to the general public is available at: <http://www.health.alberta.ca/health-info/influenza-evidence.html>

[Back to first page](#)

Attack rates in respiratory outbreaks

The RSV outbreak in a daycare facility in Week 50 (Dec 12-18) had an attack rate of 23% and the influenza outbreak in a seniors' lodge/assisted living facility in Week 51 (Dec 19-25) had an attack rate of 4%.

Influenza-like illness visits and “Left Without Being seen”

The number of ILI-related visits to emergency departments/urgent care centers was 59% higher in Week 52 (Dec 26, 2010 – Jan 1, 2011) compared to Week 50, pushing its rate to more than 5% of all screened visits. The number of hospital admissions in Week 52 doubled from Week 50, while the number of ED visits by people with ILI symptoms who left ED's without being seen nearly doubled as well from Week 50.

Respiratory related calls to Health Link Alberta

The number of calls to Health Link Alberta by residents of Edmonton Zone for cough or breathing difficulties was 25% higher in Week 52 (Dec 26, 2010 – Jan 1, 2011) compared to Week 50. This is the highest it has been this season. The recent increase is due primarily to an increase in calls on behalf of children younger than 2 years older.

Percentage of visits to sentinel offices with influenza-like illness (ILI)

The percentage of ILI-related visits to sentinel physician offices by residents of Edmonton Zone in Week 52 (Dec 26, 2010 – Jan 1, 2011) was 0.5%. No ILI-related visits were reported for Week 51.

Percentage of visits to sentinel offices with lower respiratory tract infection (LRTI)

The percentage of LRTI-related visits to sentinel physician offices by residents of Edmonton Zone in Week 51 (Dec 19-25, 2010) and Week 52 (Dec 26, 2010 – Jan 1, 2011) were 63% and 57% higher, respectively, compared to Week 50. This indicator is the highest it has been this season.

The combined percentage of ILI- and LRTI-related visits to sentinel physician offices by residents of Edmonton Zone in Weeks 51 and 52 were 20% and 34% higher, respectively, compared to Week 50. This indicator is also the highest it has been this season and exhibits a trend that is consistent with the increased number of ED visits and Health Link Alberta calls for symptoms suggestive of influenza-like illness.

SURVEILLANCE AND HEALTH STATUS ASSESSMENT

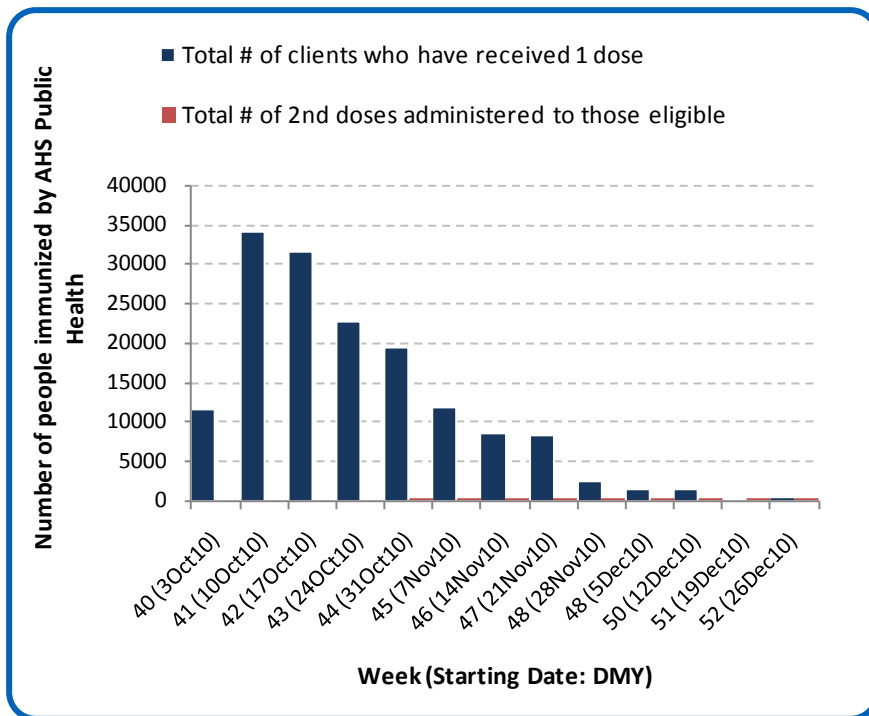
Public Health Surveillance

Report Date: January 5, 2011

An influenza report targeted to the general public is available at: <http://www.health.alberta.ca/health-info/influenza-evidence.html>

[Back to first page](#)

Figure 5F: Number Immunized by AHS (Public Health), by week, Edmonton Zone (2010-2011)



Source: AHS Zones (doses do not include those delivered by external providers)
 Note: Immunization coverage rates will be reported at the end of the influenza season
 For more information on data definitions and sources see [Annex: Data Notes section at the end of this report](#)

[Back to first page](#)

Table 5C: AHS (Public Health) Delivered Influenza Immunizations (with Cumulative totals), by priority group, Edmonton Zone (2010-2011)

Priority Group	Number Immunized (Week 52 – Dec 26, 2010 - Jan 1, 2011)	Cumulative Number Immunized (since Oct 3, 2010)
Long term care staff	0	313
Health care workers	8	4,658
Pregnant women	6	1,314
Residents of long term care	0	1,030
65 years of age and over	33	47,849
All children 6 months up to and including 23 months*	Dose #1	82
	Dose #2	32
All children 24 months up to and including 59 months*	Dose #1	18
	Dose #2	4
High risk: 5 years up to and including 8 years*	Dose #1	3
	Dose #2	1
High risk: 9 years up to and including 64 years	39	16,614
Healthy: 5 years up to and including 8 years*	Dose #1	9
	Dose #2	0
Healthy: 9 years up to and including 64 years	183	64,630
Total number of clients who have received 1 dose	381	154,791
Total number of 2nd doses administered to those eligible*	37	1,603

Source: AHS Zones (doses do not include those delivered by external providers)

*Children under 9 years of age who have not received at least one dose of seasonal influenza vaccine in past years require two doses, given at least four weeks apart.

Note: Immunization coverage rates will be reported at the end of the influenza season

For more information on data definitions and sources see [Annex: Data Notes section at the end of this report](#)

SURVEILLANCE AND HEALTH STATUS ASSESSMENT

Public Health Surveillance

Report Date: January 5, 2011

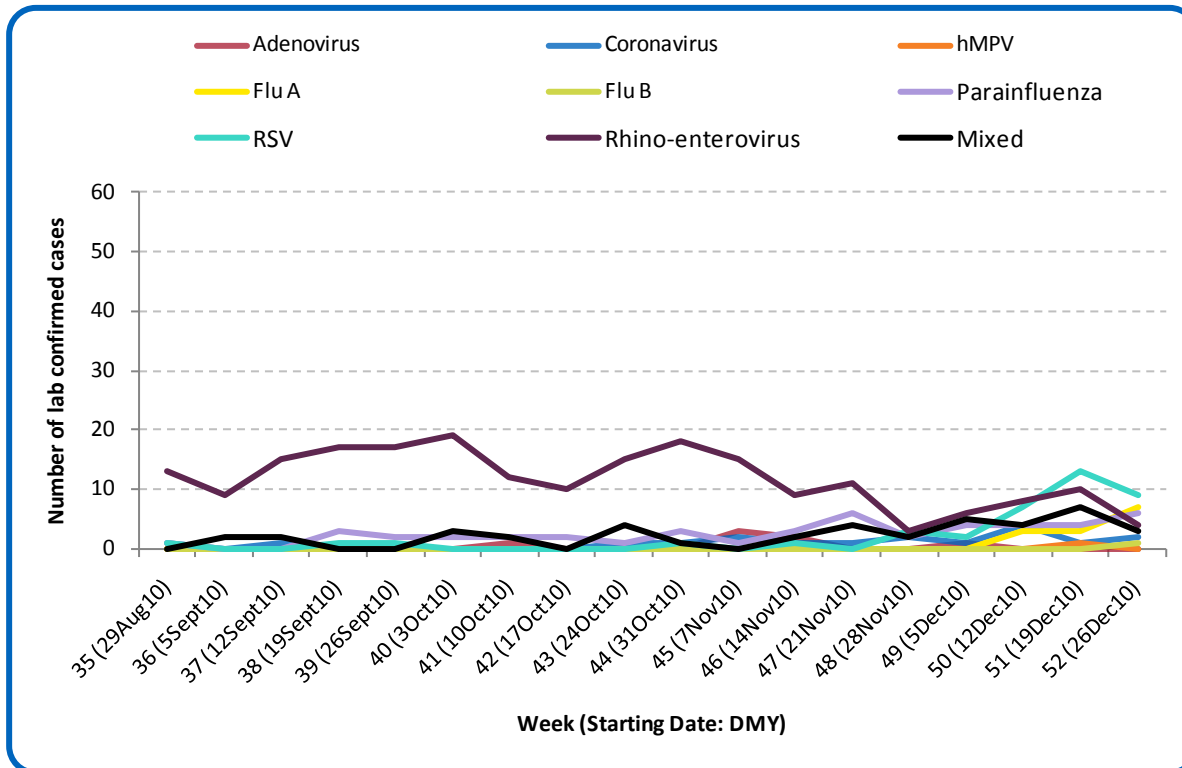
An influenza report targeted to the general public is available at: <http://www.health.alberta.ca/health-info/influenza-evidence.html>

SECTION 6: ZONE 5 – NORTH

[Back to first page](#)

Last week, there were seven new cases of Influenza confirmed in North Zone (five were sub-typed as H3, one was sub-typed as H1N1 2009 and the remaining case was sub-typed as type B). This season, there have been a total of 12 Influenza cases confirmed in North Zone.

Figure 6A: Laboratory confirmed respiratory virus cases, by virus type, by week, North Zone (2010-2011)



Sources: DIAL – Provincial Laboratory and the Outbreak Response Toolkit (includes cases with positive respiratory specimens received on or before Jan 1, 2011). For more information on data definitions and sources see [Annex: Data Notes section at the end of this report](#)

SURVEILLANCE AND HEALTH STATUS ASSESSMENT

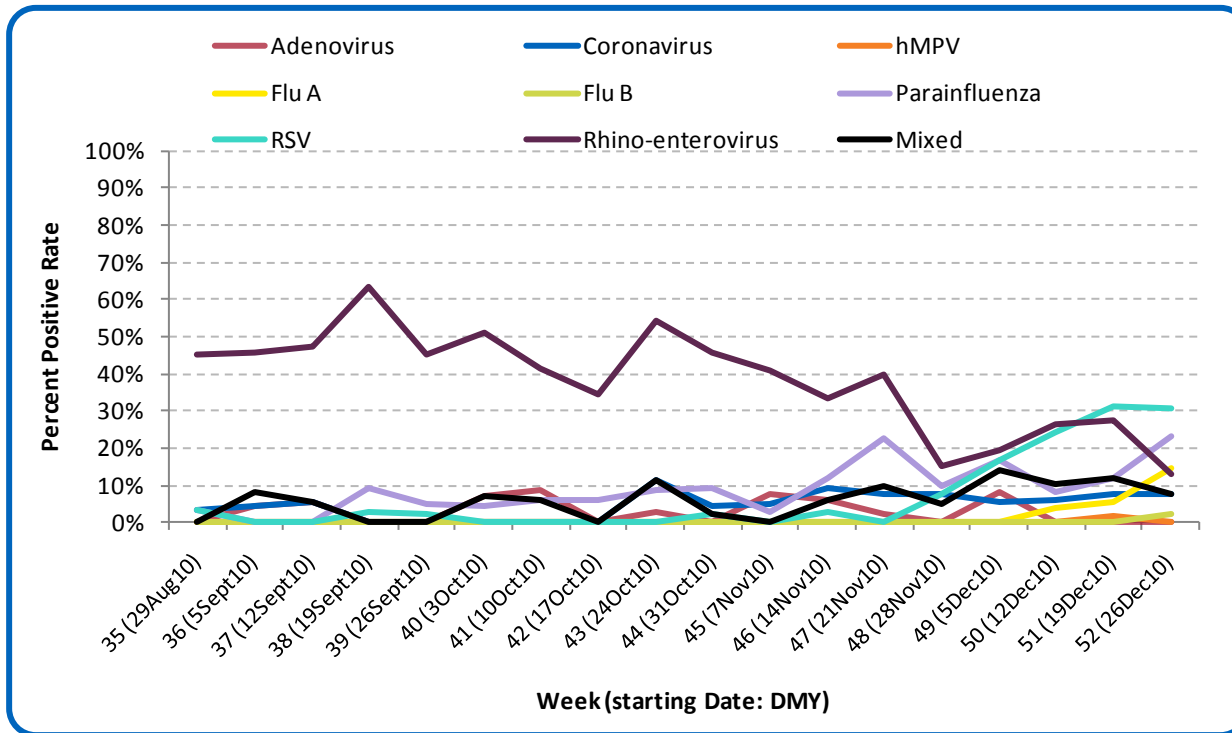
Public Health Surveillance

Report Date: January 5, 2011

An influenza report targeted to the general public is available at: <http://www.health.alberta.ca/health-info/influenza-evidence.html>

[Back to first page](#)

Figure 6B: Respiratory Specimen Percent Positive Rates, by virus type, by week, North Zone (2010-2011)



Source: DIAL – Provincial Laboratory (includes cases with positive respiratory specimens received on or before Jan 1, 2011)
For more information on data definitions and sources see [Annex: Data Notes section at the end of this report](#)

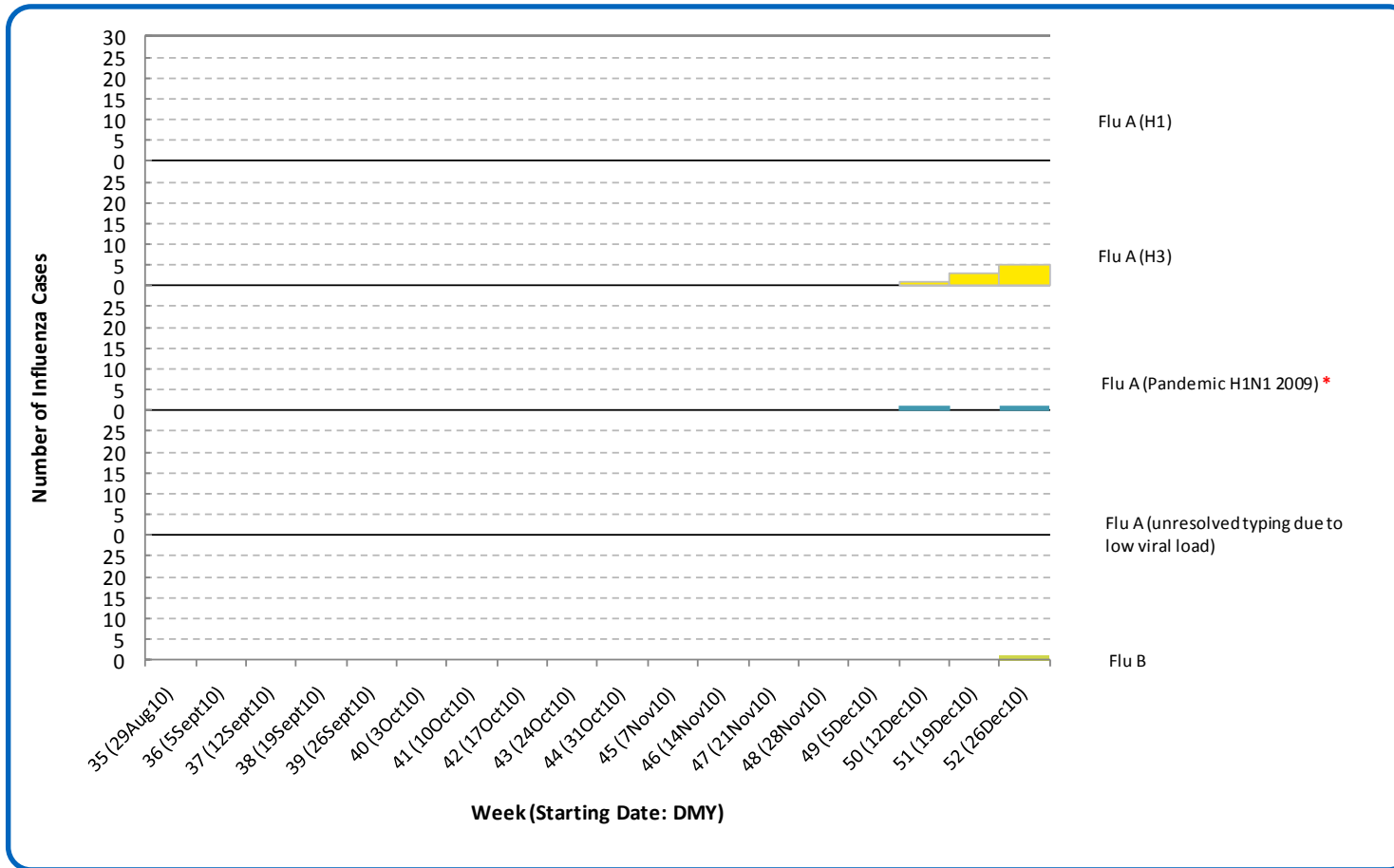
SURVEILLANCE AND HEALTH STATUS ASSESSMENT

Public Health Surveillance

Report Date: January 5, 2011

An influenza report targeted to the general public is available at: <http://www.health.alberta.ca/health-info/influenza-evidence.html>

Figure 6C: Laboratory confirmed Influenza cases, by subtype, by week specimen received, North Zone (2010-2011)



*Note: The specimen received in Week 50 was positive for both RSV and influenza A (H1N1) 2009.

Source: Outbreak Response Toolkit (includes cases with positive respiratory specimens received on or before Jan 1, 2011).

For more information on data definitions and sources see [Annex: Data Notes section at the end of this report](#)

SURVEILLANCE AND HEALTH STATUS ASSESSMENT

Public Health Surveillance

Report Date: January 5, 2011

An influenza report targeted to the general public is available at: <http://www.health.alberta.ca/health-info/influenza-evidence.html>

[Back to first page](#)

Table 6A: New Influenza cases (and age specific rates), by subtype, by age group, Edmonton Zone (Week 52: Dec 26, 2010-Jan 1, 2011)

	Flu A (Seasonal-H1)		Flu A (Seasonal-H3)		Flu A (Pandemic H1N1 2009)		Flu A (unresolved typing due to low viral load)			Flu B		Total
	#	Rate (per 10,000)	#	Rate (per 10,000)	#	Rate (per 10,000)	#	Rate (per 10,000)	#	Rate (per 10,000)	#	Rate (per 10,000)
0 to <2 years	0	0.0	0	0.0	0	0.0	0	0.0	0	0.0	0	0.0
2 to <5 years	0	0.0	0	0.0	0	0.0	0	0.0	1	0.5	1	0.5
5 to <9 years	0	0.0	0	0.0	0	0.0	0	0.0	0	0.0	0	0.0
9 to <18 years	0	0.0	1	0.2	0	0.0	0	0.0	0	0.0	1	0.2
18 to <65 years	0	0.0	3	0.1	1	<0.1	0	0.0	0	0.0	4	0.1
65 to <75 years	0	0.0	0	0.0	0	0.0	0	0.0	0	0.0	0	0.0
75+ years	0	0.0	1	0.6	0	0.0	0	0.0	0	0.0	1	0.6
Total	0	0.0	5	0.1	1	<0.1	0	0.0	1	0.0	7	0.2

Table 6B: Cumulative Influenza cases (and age specific rates), by subtype, by age group, Edmonton Zone (Aug 29, 2010-Jan 1, 2011)

	Flu A (Seasonal-H1)		Flu A (Seasonal-H3)		Flu A (Pandemic H1N1 2009)		Flu A (unresolved typing due to low viral load)			Flu B		Total
	#	Rate (per 10,000)	#	Rate (per 10,000)	#	Rate (per 10,000)	#	Rate (per 10,000)	#	Rate (per 10,000)	#	Rate (per 10,000)
0 to <2 years	0	0.0	2	1.4	1	0.7	0	0.0	0	0.0	3	2.2
2 to <5 years	0	0.0	0	0.0	0	0.0	0	0.0	1	0.5	1	0.5
5 to <9 years	0	0.0	1	0.4	0	0.0	0	0.0	0	0.0	1	0.4
9 to <18 years	0	0.0	2	0.4	0	0.0	0	0.0	0	0.0	2	0.4
18 to <65 years	0	0.0	3	0.1	1	<0.1	0	0.0	0	0.0	4	0.1
65 to <75 years	0	0.0	0	0.0	0	0.0	0	0.0	0	0.0	0	0.0
75+ years	0	0.0	1	0.6	0	0.0	0	0.0	0	0.0	1	0.6
Total	0	0.0	9	0.2	2	<0.1	0	0.0	1	<0.1	12	0.3

Source for Tables 6A & 6B: Outbreak Response Toolkit (includes cases with positive respiratory specimens received on or before *Jan 1, 2011*).

Population data values used to calculate rates are for June 30, 2009 and are estimated using actual population values from the Alberta Health Care Insurance Plan (AHCIP) Registration File as of March 31, 2009.

For more information on data definitions and sources see [Annex: Data Notes section at the end of this report](#)

SURVEILLANCE AND HEALTH STATUS ASSESSMENT

Public Health Surveillance

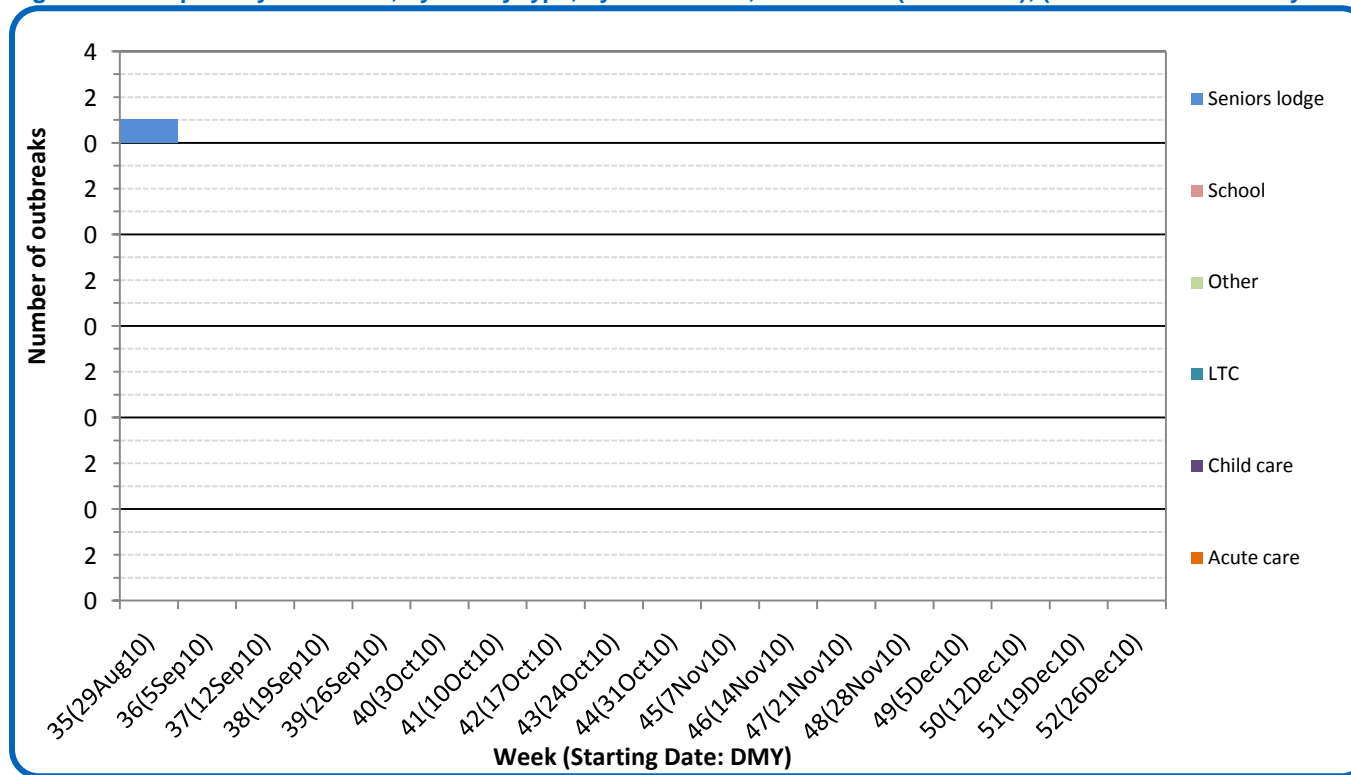
Report Date: January 5, 2011

An influenza report targeted to the general public is available at: <http://www.health.alberta.ca/health-info/influenza-evidence.html>

[Back to first page](#)

There have been no laboratory confirmed respiratory outbreaks reported in North Zone since the week of Aug 29, 2010.

Figure 6D: Respiratory outbreaks, by facility type, by onset week, North Zone (2010-2011); (school outbreaks may not have a laboratory confirmation)



Source: Alberta Outbreak Reporting Form as of 23:59 on Jan 1, 2011. LTC stands for long term care facility. For more information on data definitions and sources see [Annex: Data Notes section at the end of this report](#)

SURVEILLANCE AND HEALTH STATUS ASSESSMENT

Public Health Surveillance

Report Date: January 5, 2011

An influenza report targeted to the general public is available at: <http://www.health.alberta.ca/health-info/influenza-evidence.html>

[Back to first page](#)

Attack rates in respiratory outbreaks

There have been no reports of respiratory outbreaks in North Zone since the week of Aug 29, 2010.

Influenza-like illness visits and “Left Without Being seen”

There are no data available for North Zone.

Respiratory related calls to Health Link

The number of calls to Health Link Alberta by residents of North Zone for cough or breathing difficulties has been relatively stable in the last three weeks.

Percentage of visits to sentinel offices with Influenza-like illness

There were no reports of ILI-related visits to sentinel physician offices by residents of North Zone in Weeks 51 (Dec 19- 25) and 52 (Dec 26, 2010 – Jan 1, 2011).

Percentage of visits to sentinel offices with lower respiratory tract infection

The percentages of LRTI-related visits to sentinel physician offices by residents of North Zone in Weeks 51 (Dec 19- 25) and 52 (Dec 26, 2010 – Jan 1, 2011) were 4X and 6X higher, respectively, compared to Week 50 (Dec 12 - 18). This indicator is the highest it has been this season.

The combined percentage of ILI- and LRTI-related visits to sentinel physician offices by residents of North Zone in Week 52 was comparable to that in Week 50.

SURVEILLANCE AND HEALTH STATUS ASSESSMENT

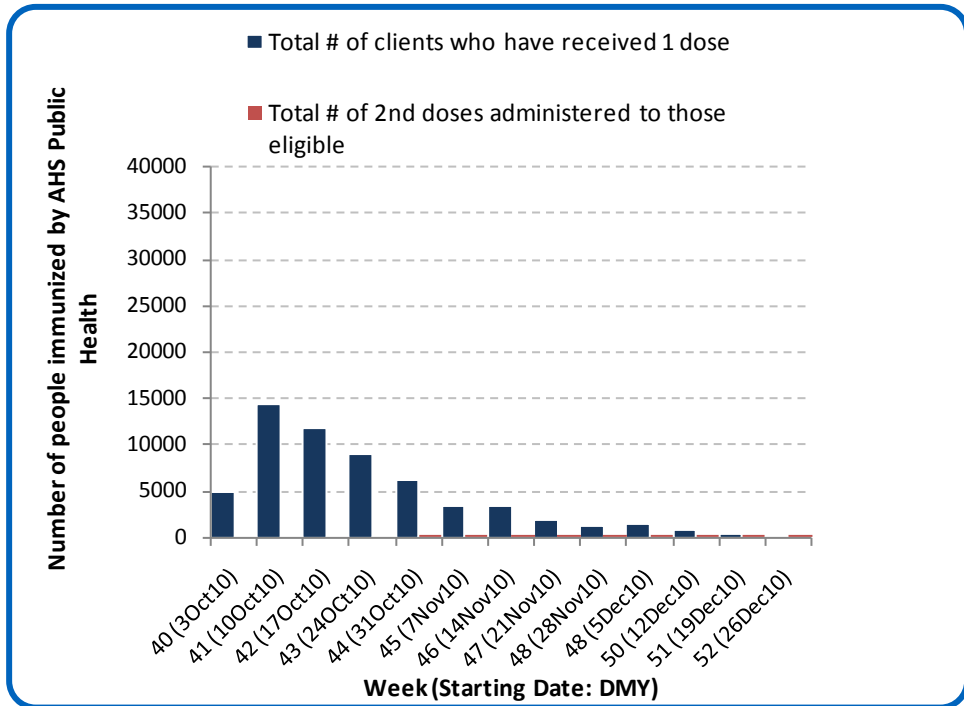
Public Health Surveillance

Report Date: January 5, 2011

An influenza report targeted to the general public is available at: <http://www.health.alberta.ca/health-info/influenza-evidence.html>

[Back to first page](#)

Figure 6E: Number Immunized by AHS (Public Health), by week, North Zone (2010-2011)



Source: AHS Zones (doses do not include those delivered by external providers)
 Note: Immunization coverage rates will be reported at the end of the influenza season
 For more information on data definitions and sources see [Annex: Data Notes section at the end of this report](#)

SURVEILLANCE AND HEALTH STATUS ASSESSMENT

Public Health Surveillance

Report Date: January 5, 2011

An influenza report targeted to the general public is available at: <http://www.health.alberta.ca/health-info/influenza-evidence.html>

[Back to first page](#)

Table 6C: AHS (Public Health) Delivered Influenza Immunizations (with Cumulative totals), by priority group, North Zone (2010-2011)

Priority Group		Number Immunized (Week 52 – Dec 26, 2010 - Jan 1, 2011)	Cumulative Number Immunized (since Oct 3, 2010)
Long term care staff		1	795
Health care workers		15	4,580
Pregnant women		6	520
Residents of long term care		0	1,244
65 years of age and over		26	15,456
All children 6 months up to and including 23 months*	Dose #1	22	1,953
	Dose #2	17	496
All children 24 months up to and including 59 months*	Dose #1	14	2,365
	Dose #2	3	82
High risk: 5 years up to and including 8 years*	Dose #1	2	885
	Dose #2	0	9
High risk: 9 years up to and including 64 years		28	7,483
Healthy: 5 years up to and including 8 years*	Dose #1	11	2,256
	Dose #2	2	48
Healthy: 9 years up to and including 64 years		106	22,128
Total number of clients who have received 1 dose		231	59,665
Total number of 2nd doses administered to those eligible*		22	635

Source: AHS Zones (doses do not include those delivered by external providers)

*Children under 9 years of age who have not received at least one dose of seasonal influenza vaccine in past years require two doses, given at least four weeks apart.

Note: Immunization coverage rates will be reported at the end of the influenza season

For more information on data definitions and sources see [Annex: Data Notes section at the end of this report](#)

SURVEILLANCE AND HEALTH STATUS ASSESSMENT

Public Health Surveillance

Report Date: January 5, 2011

An influenza report targeted to the general public is available at: <http://www.health.alberta.ca/health-info/influenza-evidence.html>

ANNEX: DATA NOTES

[Back to first page](#)

LABORATORY

Information on laboratory confirmed respiratory virus activity in Alberta is based on data from 2 sources:

- 1) Non-influenza viruses: The Alberta Provincial Public Health Laboratory DIAL system (Data Integration for Alberta Laboratories) – a specimen based system. Cases are determined by rationalizing samples from the same patient with the same virus identified within a 30-day period. The information (i.e. received date) from the first sample identifying the identical virus is used in this report.
- 2) Influenza viruses: The Alberta influenza Case Management System – an influenza case based system.

Both data sources are web-based applications supported by the Canadian Network for Public Health Intelligence.

The data in this report are based on specimens obtained from residents of Alberta; according to the date the specimen was received by the laboratory.

Definition for “mixed” – a single sample where multiple viral organisms were isolated.

INFLUENZA-LIKE ILLNESS

Four data sources are used to provide information on utilization of primary and acute care services by people with Influenza-Like Illness (ILI). *Caution: Each source uses potentially different definitions of ILI.*

1. Primary care summaries are obtained from the TARRANT system. Patients seen by TARRANT physicians may not be representative of the general population. Reported ILI cases represent people seen by TARRANT physicians, according to the date seen by the physician. The percentage of ILI represents the proportion of patients with ILI of all patients seen by the physician.
2. In addition to reporting visits of patients with ILI, TARRANT physicians also report visits with lower respiratory tract infections (LRTI). Each visit is recorded only once, even if a patient has symptoms consistent with ILI and LRTI. The combined ILI- and LRTI-related visits are therefore suggestive of overall respiratory infections in the patient population.
3. Information on visits for ILI in Emergency Departments (ED) and urgent care centers are provided by the Alberta Real Time Syndromic Surveillance Net (ARTSSN) data repository. ILI designation is based on patients being screened in emergency departments with an ILI screening tool. The primary purpose of the ILI screening tool is to implement appropriate infection control measures. The original data sources fed to the ARTSSN data repository are EDIS (Emergency Department Information System) for the Edmonton Zone and REDIS for the Calgary Zone.
4. Health Link Alberta is a 24 hour a day, 7 day a week nurse telephone advice and health information service that provides the public with advice and information about health symptoms and concerns. The original data source for the daily calls to Health Link Alberta for ILI, cough, and breathing difficulties is the Health Link database called Sharp Focus.

SURVEILLANCE AND HEALTH STATUS ASSESSMENT

Public Health Surveillance

Report Date: January 5, 2011

An influenza report targeted to the general public is available at: <http://www.health.alberta.ca/health-info/influenza-evidence.html>

OUTBREAKS

[Back to first page](#)

Upon notification of an outbreak, the *Alberta Health & Wellness/Alberta Health Services* Outbreak Reporting Form (Fillable PDF) is completed by Zone Public Health investigators and sent to *Alberta Health & Wellness and AHS Public Health Surveillance*. The form includes information about the type and location of the outbreak, type of facility, and the causative organism (confirmed or suspected). There may be a delay between the reporting of an outbreak and the identification of the organism. This report includes only those outbreaks that are laboratory confirmed and caused by influenza-like illness viruses; outbreaks that are caused by bacteria (i.e. pertussis, invasive pneumococcal disease) and other types of viruses (i.e. measles, rubella (German measles), chickenpox) are excluded. Also excluded are those outbreaks that have no causative agent identified by the Provincial Laboratory for Public Health or where specimens are not tested or an outbreak with only one infected (confirmed or probable) case during a 7 day period. This follows the same approach of PHAC FluWatch for defining ILI/influenza outbreak. The naming convention of outbreak facilities by FluWatch - "Hospital and residential institutions" - is also adopted. Outbreaks in schools are officially counted in tables or graphs whether there is or not a laboratory confirmation; outbreaks in hospital and residential institutions that are pending for laboratory confirmation are described for information only but not officially presented in graphs or tables in this report.

INFLUENZA IMMUNIZATIONS

Influenza immunization data are reported by AHS zones. Numbers are available to the Public Health Surveillance team at the beginning of the week for the doses administered the previous week (Sunday to Saturday). It includes those doses administered by AHS (Public Health) only. Clients can only exist in one priority group. Immunization coverage rates will be reported at the end of March, 2011.

POPULATION NUMBERS

Population data values used to calculate rates are for June 30, 2009 and are estimated using actual population values from the Alberta Health Care Insurance Plan (AHCIP) Registration File as of March 31, 2009. The following registrants are included: residents of Alberta; 'residents' of Alberta temporarily living elsewhere, such as extended visits or vacations or students attending an educational institute outside of Alberta, or Albertans temporarily (up to four years) working outside Alberta; persons during the first three months after they move from Alberta to another Canadian province; dependants of members of the RCMP and Armed Forces; persons from another country who are working or studying in Alberta on valid visas; and Natives/Aboriginals whose premiums are paid by Health Canada, First Nations and Inuit Health Branch. Not included are: members of the Armed Forces and RCMP; inmates at federal penitentiaries; persons from other provinces during their first three months in Alberta; and persons who have not registered for eligibility, or have opted out.

Slight differences between values provided at this level of aggregation and data provided at other levels of aggregation may occur because of round-off error. Population values are subject to change without notice when new source data is received.

SURVEILLANCE AND HEALTH STATUS ASSESSMENT

Public Health Surveillance

Report Date: January 5, 2011

An influenza report targeted to the general public is available at: <http://www.health.alberta.ca/health-info/influenza-evidence.html>