

Weekly Report

January 11, 2011

The purpose of this report is to inform Public Health staff, primary care providers, acute care staff and other community practitioners about recent respiratory virus activity in the province of Alberta. Unless otherwise noted, all data presented are current as of the Saturday prior to the day the report is released.

To navigate to certain sections of the report or to visit other relevant websites, use the Quick Links below

[Alberta Snapshot](#)

[Section 1: Alberta](#)

[Section 2: Zone 1 - South](#)

[Section 3: Zone 2 - Calgary](#)

[Section 4: Zone 3 - Central](#)

[Section 5: Zone 4 – Edmonton](#)

[Section 6: Zone 5 – North](#)

[Annex: Data Notes](#)

[Current Global Information](#)

[FluWatch \(PHAC\)](#)

[FluView \(US CDC\)](#)

[HPA \(UK\)](#)

[WHO](#)

[Travel Advisories](#)

What's New?

- According to the latest WHO report, the winter influenza season is now underway in parts of the Northern Hemisphere. In recent weeks, the UK has seen a surge in both mild and severe cases of primarily influenza A (H1N1) 2009 virus and to a lesser extent influenza B. The latest report from the European Centre for Disease Prevention and Control (ECDC) states a high intensity of influenza activity has been reported by Denmark, Ireland and the UK and widespread activity has been reported by the UK and seven European countries, including Belgium, Denmark, France, Ireland, the Netherlands, Norway and Portugal. Of note, a journal article recently published in *Eurosurveillance* reports severe illness in the UK, resulting in hospitalization or deaths, has occurred in children and young adults and has predominantly been associated with influenza A (H1N1) 2009, but also influenza B viruses. The article also states most of those with severe illness and who have died have not been previously vaccinated and have not had the benefit of the early use of antiviral drugs. Although analysis is ongoing, illness to date associated with influenza A (H1N1) 2009 virus is consistent with that seen in the 2009 Pandemic.
- According to the latest FluWatch report, influenza activity in Canada continues to increase. To date, influenza A (H3N2) is the predominant virus identified, with influenza A (H1N1) 2009 and influenza B being identified to a lesser extent.
- In Alberta, the number of laboratory confirmed cases of RSV continues to increase. The number of influenza cases is rising as well, with the number of new cases confirmed last week nearly doubling from the number confirmed the week before. The total number of confirmed cases of influenza in the province this season is now 162. The majority (79.0%) are influenza A (H3), while the remaining cases have been typed as influenza A (H1N1) 2009 (12.3%), influenza type B (4.9%) and influenza A with unresolved sub-typing (3.7%). At this point in the season, the age specific rates for confirmed cases of type A (H3), A (H1N1) and type B in infants 0 to <2 years of age are slightly higher than in other age groups. This is with the exception of the rate for type A (H3) in those aged 75 years and older, which is similar to that of infants.
- In the last 2 weeks, there have been three respiratory outbreaks confirmed in Alberta, including one attributed to rhino-enterovirus in a Calgary Zone long term care facility, one attributed to influenza (H3) in a Calgary Zone acute care hospital and another attributed to influenza A (H3) in a Central Zone seniors' lodge. Also in Central Zone, an additional respiratory outbreak in a seniors' lodge is currently pending laboratory confirmation. Please note, in last week's report, an outbreak in a Calgary Zone long term care facility was attributed to parainfluenza in error; it should have been attributed to rhino-enterovirus.

If you have questions about the Alberta Respiratory Virus Surveillance Update, or any of the indicators, please contact: AHSPublicHealthSurveillance@albertahealthservices.ca Or phone: 780-342-0210

Alberta Snapshot

[Back to first page](#)

Indicators			Cumulative Counts					Alberta
			Week 35 (starting Aug 29/10) to week 1 (starting Jan 2/11)					
			South	Calgary	Central	Edmonton	North	
Laboratory Confirmed Cases	Number of cases with a positive respiratory specimen ¹	Adenovirus	3	23	8	35	8	77
		Coronavirus	3	23	11	57	21	115
		Human metapneumovirus (hMPV)	5	2	0	2	2	11
		Influenza A	12	51	24	51	16	154*
		Influenza B	0	5	1	1	1	8
		Parainfluenza	17	33	21	99	57	227
		Respiratory syncytial virus (RSV)	18	150	20	195	52	435
		Rhino enterovirus	72	342	132	465	216	1,227
		Mixed	10	62	18	63	44	197
		Total	140	691	235	968	417	2,451
Outbreaks	# laboratory confirmed respiratory outbreaks ²	0	9	2	10	1	22	
Influenza Immunizations	Total number of clients who have received 1 dose administered by AHS Public Health ³ (cumulative since Oct 3, 2010)	42,222	181,097	59,829	155,726	60,075	498,949	

-- Information not available

*Note: Five specimens were positive for both influenza A and RSV. To ensure an accurate count of laboratory confirmed influenza cases, they have been included in the influenza A category. To avoid double counting, they have not been included in the "mixed" category.

¹ Sources: DIAL – Provincial Laboratory and the Outbreak Response Toolkit (includes cases with positive respiratory specimens received on or before Jan 8, 2011).

² Source: Alberta Health and Wellness Outbreak Reporting Form (Fillable PDF) from All Zones

³Source: AHS Zones (number does not include doses provided by external providers); includes first doses only for those that require two doses

For more information on data definitions and sources see [Annex: Data Notes section at the end of this report](#)

SURVEILLANCE AND HEALTH STATUS ASSESSMENT

Public Health Surveillance

Report Date: January 11, 2011

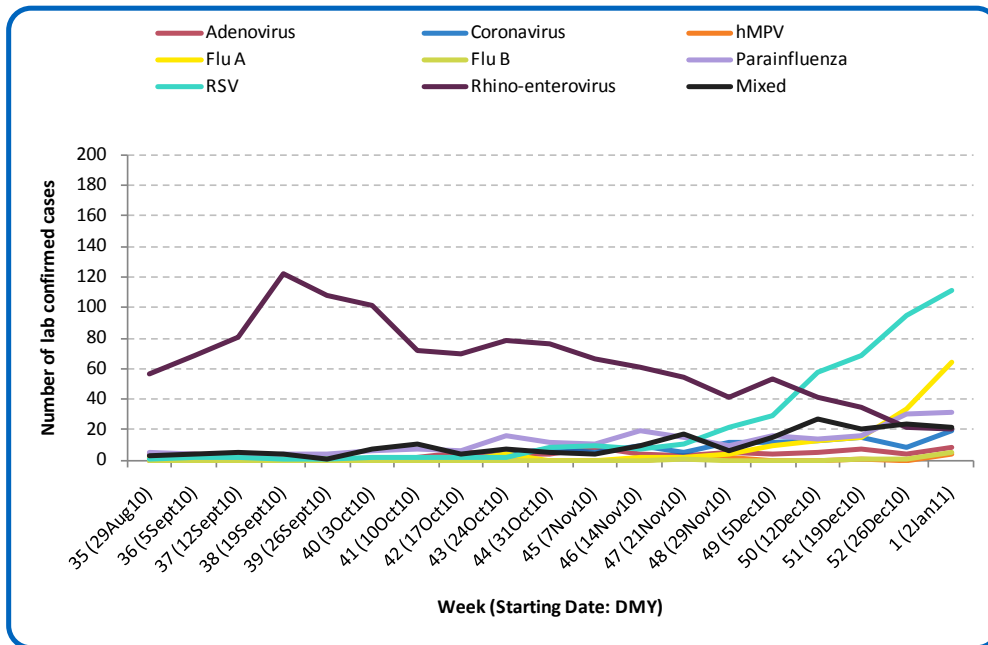
An influenza report targeted to the general public is available at: <http://www.health.alberta.ca/health-info/influenza-evidence.html>

SECTION 1: ALBERTA

[Back to first page](#)

The predominant respiratory virus circulating in Alberta is RSV. The number of new cases of influenza that occurred last week nearly doubled from the number that occurred the previous week. As of the end of last week (Jan 8, 2011), the total number of confirmed cases of influenza in the province this season is 162 (79.0% type A H3 sub-type, 12.3% type A (H1N1) 2009, 3.7% type A with unresolved sub-typing, and 4.9% type B). At this point in the season, the age specific rates for confirmed influenza cases in infants 0 to <2 years of age are slightly higher than the rates in other age groups, at 1.5 per 10,000 for influenza A (H3), 0.5 per 10,000 for influenza A (H1N1) 2009, and 0.2 per 10,000 for influenza B. This is with the exception of the age-specific rate for confirmed cases of influenza A (H3) in adults aged 75 years and older, which is 1.6 per 10,000.

Figure 1A: Laboratory confirmed respiratory virus cases, by virus type, by week, Alberta (2010-2011)



Sources: DIAL – Provincial Laboratory and the Outbreak Response Toolkit (includes cases with positive respiratory specimens received on or before Jan 8, 2011). For more information on data definitions and sources see [Annex: Data Notes section at the end of this report](#)

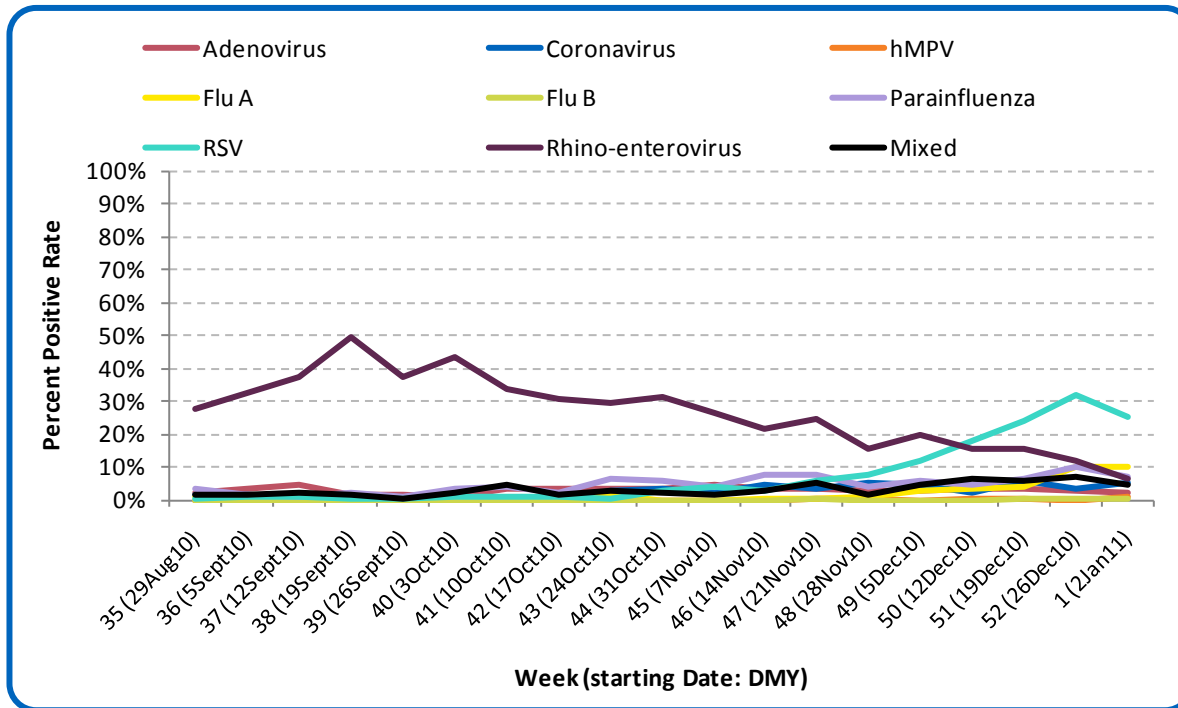
SURVEILLANCE AND HEALTH STATUS ASSESSMENT

Public Health Surveillance
Report Date: January 11, 2011

An influenza report targeted to the general public is available at: <http://www.health.alberta.ca/health-info/influenza-evidence.html>

Figure 1B: Respiratory Specimen Percent Positive Rates, by virus type, by week, Alberta (2010-2011)

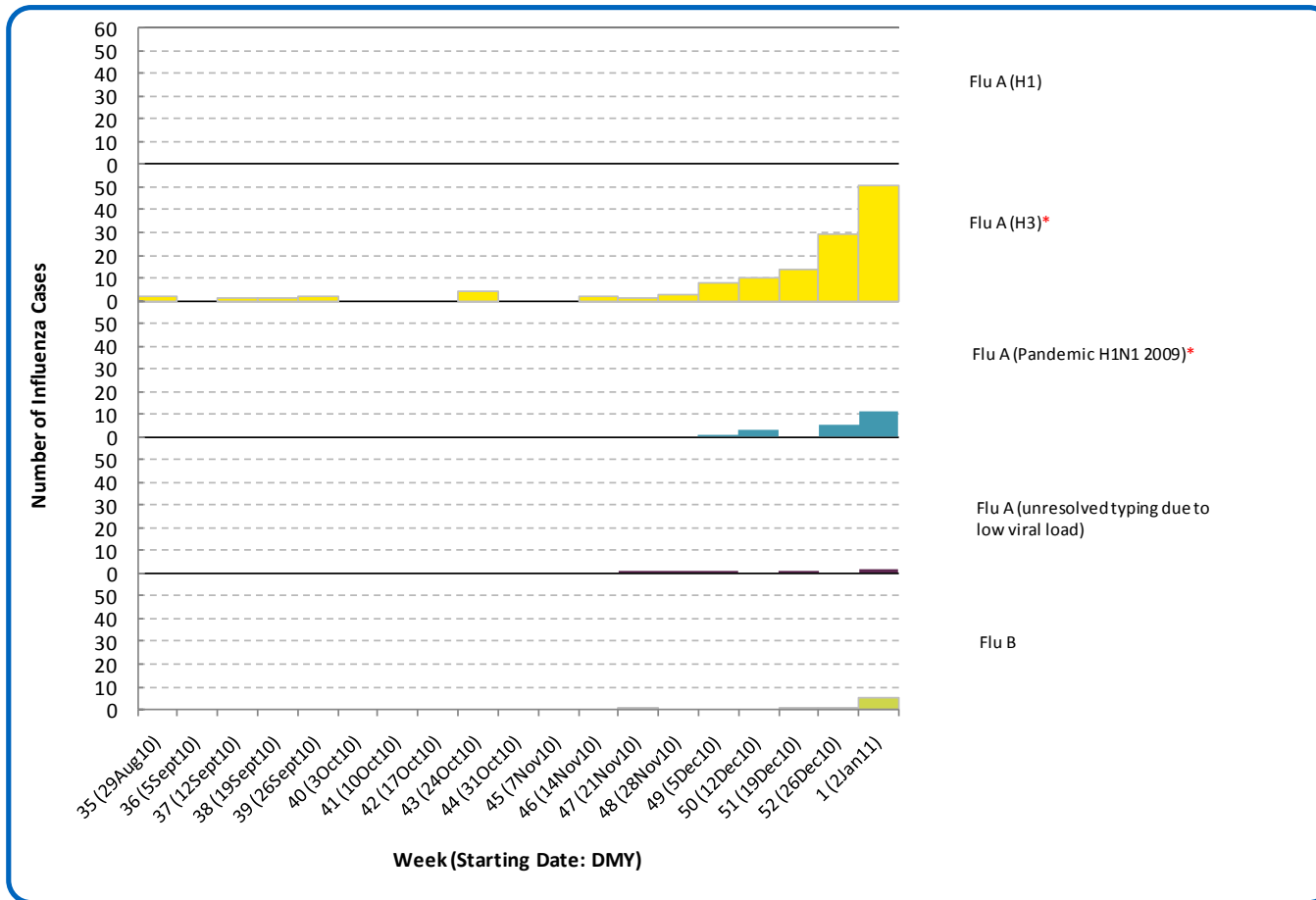
[Back to first page](#)



Source: DIAL – Provincial Laboratory (includes cases with positive respiratory specimens received on or before Jan 8, 2011)
 For more information on data definitions and sources see [Annex: Data Notes section at the end of this report](#)

Figure 1C: Laboratory confirmed Influenza cases, by subtype, by week specimen received, Alberta (2010-2011)

[Back to first page](#)



*Note: Two specimens were positive for both RSV and influenza A (H1N1) 2009 and three specimens were positive for both RSV and influenza A (H3).

Source: Outbreak Response Toolkit (includes cases with positive respiratory specimens received on or before Jan 8, 2011).

For more information on data definitions and sources see [Annex: Data Notes section at the end of this report](#)

SURVEILLANCE AND HEALTH STATUS ASSESSMENT

Public Health Surveillance

Report Date: January 11, 2011

An influenza report targeted to the general public is available at: <http://www.health.alberta.ca/health-info/influenza-evidence.html>

[Back to first page](#)

Table 1A: New Influenza cases (and age specific rates), by subtype, by age group, Alberta (Week 1 Jan.2 - 8, 2011)

	Flu A (Seasonal-H1)		Flu A (Seasonal-H3)		Flu A (Pandemic H1N1 2009)		Flu A (unresolved typing due to low viral load)		Flu B		Total	
	#	Rate (per 10,000)	#	Rate (per 10,000)	#	Rate (per 10,000)	#	Rate (per 10,000)	#	Rate (per 10,000)	#	Rate (per 10,000)
0 to <2 years	0	0.0	3	0.3	4	0.4	1	0.1	1	0.1	9	0.9
2 to <5 years	0	0.0	2	0.1	0	0.0	0	0.0	1	0.1	3	0.2
5 to <9 years	0	0.0	0	0.0	0	0.0	0	0.0	0	0.0	0	0.0
9 to <18 years	0	0.0	2	<0.1	0	0.0	0	0.0	0	0.0	2	<0.1
18 to <65 years	0	0.0	24	0.1	7	<0.1	0	0.0	3	<0.1	34	0.1
65 to <75 years	0	0.0	3	0.1	0	0.0	0	0.0	0	0.0	3	0.1
75+ years	0	0.0	17	0.9	0	0.0	1	0.1	0	0.0	18	1.0
Total	0	0.0	51	0.1	11	<0.1	2	<0.1	5	0.0	69	0.2

Table 1B: Cumulative Influenza cases (and age specific rates), by subtype, by age group, Alberta (Aug 29, 2010 – Jan 8, 2011)

	Flu A (Seasonal-H1)		Flu A (Seasonal-H3)		Flu A (Pandemic H1N1 2009)		Flu A (unresolved typing due to low viral load)		Flu B		Total	
	#	Rate (per 10,000)	#	Rate (per 10,000)	#	Rate (per 10,000)	#	Rate (per 10,000)	#	Rate (per 10,000)	#	Rate (per 10,000)
0 to <2 years	0	0.0	15	1.5	5	0.5	1	0.1	2	0.2	23	2.3
2 to <5 years	0	0.0	10	0.7	1	0.1	1	0.1	2	0.1	14	1.0
5 to <9 years	0	0.0	4	0.2	0	0.0	0	0.0	0	0.0	4	0.2
9 to <18 years	0	0.0	5	0.1	0	0.0	1	<0.1	0	0.0	6	0.1
18 to <65 years	0	0.0	55	0.2	14	0.1	2	<0.1	4	<0.1	75	0.3
65 to <75 years	0	0.0	10	0.5	0	0.0	0	0.0	0	0.0	10	0.5
75+ years	0	0.0	29	1.6	0	0.0	1	0.1	0	0.0	30	1.7
Total	0	0.0	128	0.4	20	0.1	6	<0.1	8	<0.1	162	0.4

Source for Table 1A & 1B: Outbreak Response Toolkit (includes cases with positive respiratory specimens received on or before Jan 8, 2011).

Population data values used to calculate rates are for June 30, 2009 and are estimated using actual population values from the Alberta Health Care Insurance Plan (AHCIP) Registration File as of March 31, 2009.

For more information on data definitions and sources see [Annex: Data Notes section at the end of this report](#)

SURVEILLANCE AND HEALTH STATUS ASSESSMENT

Public Health Surveillance

Report Date: January 11, 2011

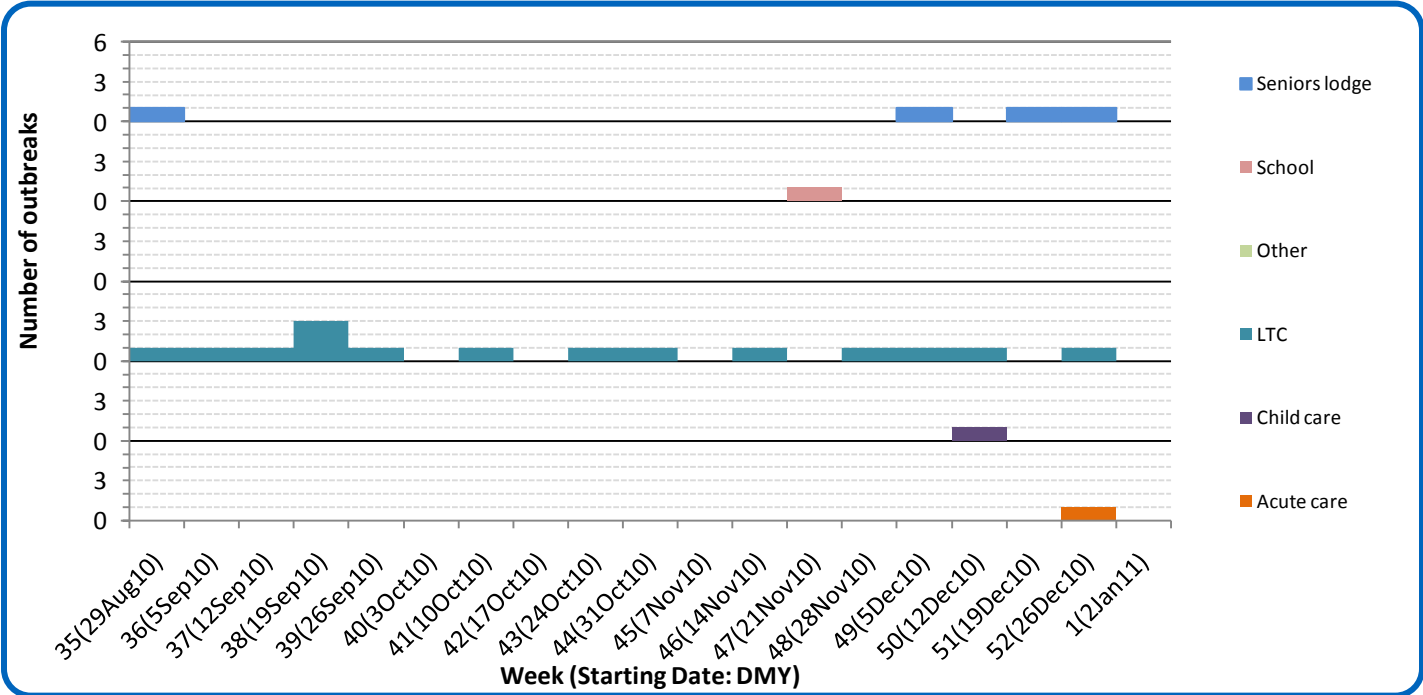
An influenza report targeted to the general public is available at: <http://www.health.alberta.ca/health-info/influenza-evidence.html>

[Back to first page](#)

There were no confirmed respiratory outbreaks in Alberta in Week 1 (Jan 2 – 8, 11). Three respiratory outbreaks were confirmed in Week 52 (Dec 26, 2010-Jan 1, 2011). Two were in Calgary zone – one was caused by rhino-enteriovirus in a long term care facility (described in last week’s report) and the other was caused by influenza (H3) in an acute care hospital. The third outbreak (also described in last week’s report) was caused by influenza (H3) in a Central Zone seniors’ lodge. An additional outbreak in a seniors’ lodge with an onset date of Dec 30, 2010 is currently pending laboratory confirmation in this Zone.

Please note, in last week’s report, an outbreak in a Calgary Zone long term care facility (with an onset date of Dec 17, 2010) was attributed to parainfluenza in error; it should have been attributed to rhino-enterovirus.

Figure 1D: Respiratory outbreaks, by facility type, by onset week, Alberta (2010-2011; school outbreaks may not have a laboratory confirmation)



Source: Alberta Outbreak Reporting Form as of 23:59 on Jan 8, 2011. LTC stands for long term care facility. For more information on data definitions and sources see [Annex: Data Notes section at the end of this report](#)

SURVEILLANCE AND HEALTH STATUS ASSESSMENT

Public Health Surveillance
Report Date: January 11, 2011

An influenza report targeted to the general public is available at: <http://www.health.alberta.ca/health-info/influenza-evidence.html>

[Back to first page](#)

Attack rates in respiratory outbreaks

The rhino-enterovirus outbreak in a Calgary Zone long term care facility had an attack rate of 50%. The Calgary Zone hospital influenza A (H3) outbreak had a preliminary attack rate of 20%. The influenza A (H3) outbreak in a Central Zone seniors' lodge had an attack rate of 6%. The outbreak in Central Zone currently pending laboratory confirmation had a preliminary attack rate of 11%.

Influenza-like illness visits and “Left Without Being Seen”

The combined number of visits to emergency departments/urgent care centers for influenza-like illness (ILI) from the City of Calgary and Edmonton Zone decreased by 9% in Week 1 (Jan 2 - 8, 2011) compared to Week 52 (Dec 26, 2011 – Jan 1, 2011). The percentage of all screened visits that were ILI-related dropped to nearly 7%. The number of hospital admissions of ILI patients decreased by only 1% whereas the number of visits of patients who left the ED's without being seen for ILI increased by 19% in the same comparison period. For people with cough symptoms during that same period, the visits to ED's, the number of hospital admissions and the number of patients who left the EDs without being seen decreased by 6%, 13% and 4%, respectively.

Respiratory related calls to Health Link Alberta

The number of calls to Health Link Alberta for cough or breathing difficulties was 5% less in Week 1 (Jan 2 - 8, 2011) compared to Week 52 (Dec 26, 2010 – Jan 1, 2011). This is consistent with the decreasing pattern of ED visits for cough symptoms.

Percentage of visits to sentinel offices with influenza-like illness (ILI)

In Week 52 (Dec 26, 2010 – Jan 1, 2011), the province-wide percentage of ILI-related visits to sentinel physician offices was not as high as it was in Week 50 (Dec 12-18) and remained below 1%.

Percentage of visits to sentinel offices with lower respiratory tract infection (LRTI)

The province-wide percentage of LRTI-related visits to sentinel physician offices in Weeks 51 (Dec 19 -25) and 52 (Dec 26, 2010 – Jan 1, 2011) was 91% and 78% higher, respectively, when compared to Week 50.

The combined percentage of ILI- and LRTI-related visits in Weeks 51 and 52 was 17% and 56% higher, respectively, compared to Week 50. This is the highest this indicator has been this season, primarily due to the increased LRTI-related visits. This trend is consistent with that of increased ED visits or Health Link Alberta calls about symptoms suggestive of influenza-like illness for the same period.

SURVEILLANCE AND HEALTH STATUS ASSESSMENT

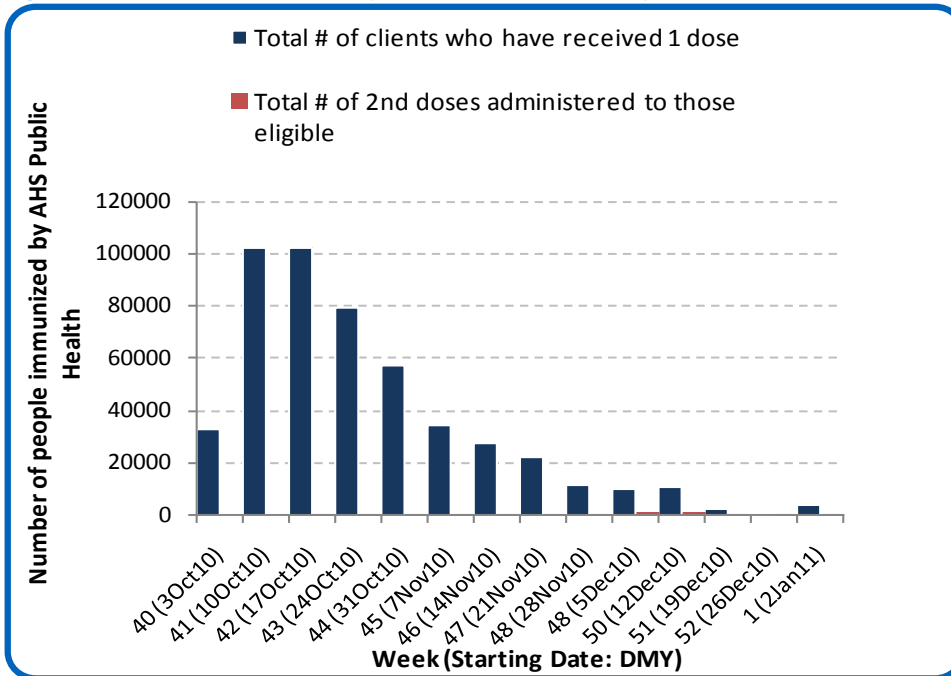
Public Health Surveillance

Report Date: January 11, 2011

An influenza report targeted to the general public is available at: <http://www.health.alberta.ca/health-info/influenza-evidence.html>

[Back to first page](#)

Figure 1E: Number Immunized by AHS (Public Health), by week, Alberta (2010-2011)



Source: AHS Zones (doses do not include those delivered by external providers);
 Note: Immunization coverage rates will be reported at the end of the influenza season
 For more information on data definitions and sources see [Annex: Data Notes section at the end of this report](#)

[Back to first page](#)

Table 1C: AHS (Public Health) Delivered Influenza Immunizations (with Cumulative totals), by priority group, Alberta (2010-2011)

Priority Group	Number Immunized (Week 1 – Jan 2-Jan 8, 2011)	Cumulative Number Immunized (since Oct 3, 2010)
Long term care staff	19	2,563
Health care workers	72	18,530
Pregnant women	81	4,364
Residents of long term care	1	4,807
65 years of age and over	263	145,332
All children 6 months up to and including 23 months*	Dose #1	806
	Dose #2	500
All children 24 months up to and including 59 months*	Dose #1	352
	Dose #2	98
High risk: 5 years up to and including 8 years*	Dose #1	79
	Dose #2	7
High risk: 9 years up to and including 64 years	263	54,519
Healthy: 5 years up to and including 8 years*	Dose #1	267
	Dose #2	26
Healthy: 9 years up to and including 64 years	1,662	201,793
Total number of clients who have received 1 dose	3,865	498,949
Total number of 2nd doses administered to those eligible*	631	6,396

Source: AHS Zones (doses do not include those delivered by external providers)

*Children under 9 years of age who have not received at least one dose of seasonal influenza vaccine in past years require two doses, given at least four weeks apart.

Note: Immunization coverage rates will be reported at the end of the influenza season

For more information on data definitions and sources see [Annex: Data Notes section at the end of this report](#)

SURVEILLANCE AND HEALTH STATUS ASSESSMENT

Public Health Surveillance

Report Date: January 11, 2011

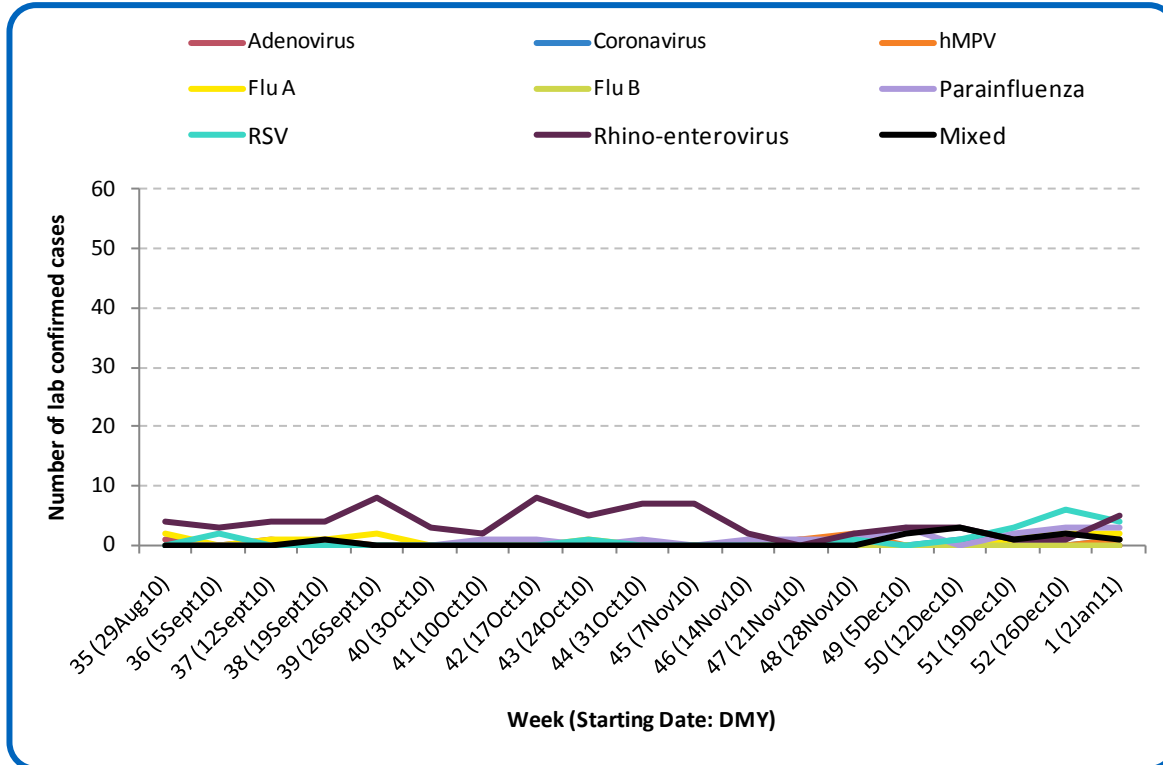
An influenza report targeted to the general public is available at: <http://www.health.alberta.ca/health-info/influenza-evidence.html>

SECTION 2: ZONE 1 - SOUTH

[Back to first page](#)

Last week, two new influenza A cases were confirmed in adults aged 18 to less than 65 years of age in South Zone; one was sub-typed as H3 and the other was sub-typed as (H1N1) 2009. The A (H1N1) 2009 case is the first to be confirmed in this zone this season. In total, there have been twelve confirmed cases of influenza in South Zone this season. Eight cases have been in adults aged 18 to less than 65 years and four cases have been in children under the age of 5 years (including one infant).

Figure 2A: Laboratory confirmed respiratory virus cases, by virus type, by week, South Zone (2010-2011)



Sources: DIAL – Provincial Laboratory and the Outbreak Response Toolkit (includes cases with positive respiratory specimens received on or before Jan 8, 2011). For more information on data definitions and sources see [Annex: Data Notes section at the end of this report](#)

SURVEILLANCE AND HEALTH STATUS ASSESSMENT

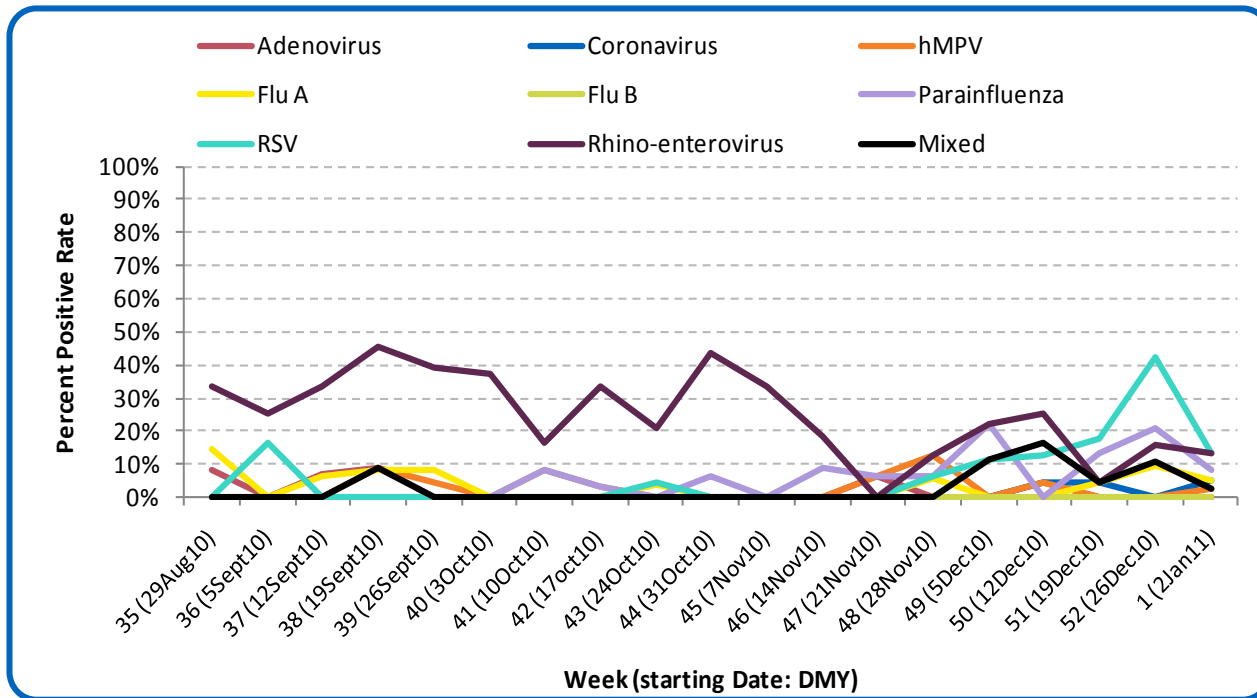
Public Health Surveillance

Report Date: January 11, 2011

An influenza report targeted to the general public is available at: <http://www.health.alberta.ca/health-info/influenza-evidence.html>

[Back to first page](#)

Figure 2B: Respiratory Specimen Percent Positive Rates, by virus type, by week, South Zone (2010-2011)



Source: DIAL – Provincial Laboratory (includes cases with positive respiratory specimens received on or before Jan 8, 2011)
For more information on data definitions and sources see [Annex: Data Notes section at the end of this report](#)

SURVEILLANCE AND HEALTH STATUS ASSESSMENT

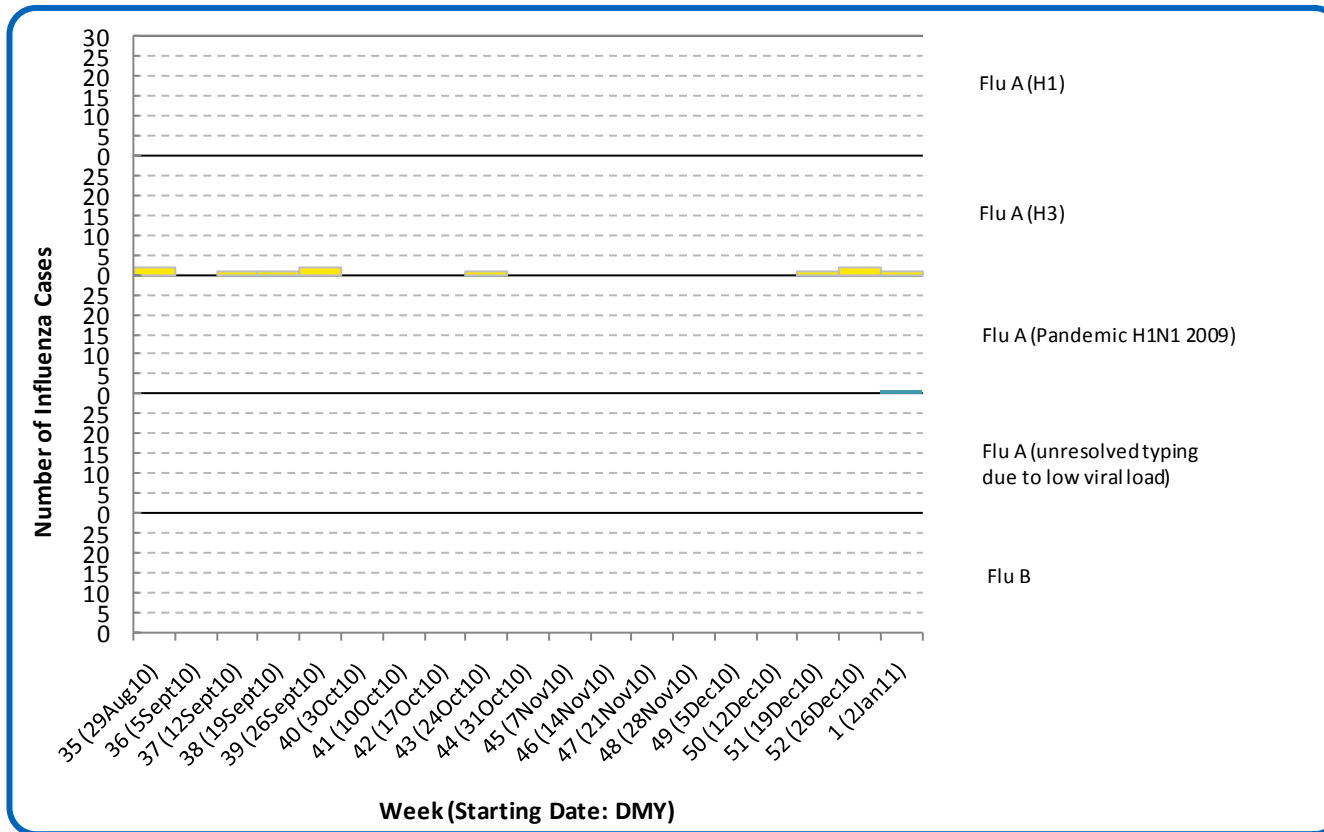
Public Health Surveillance

Report Date: January 11, 2011

An influenza report targeted to the general public is available at: <http://www.health.alberta.ca/health-info/influenza-evidence.html>

[Back to first page](#)

Figure 2C: Laboratory confirmed Influenza cases, by subtype, by week specimen received, South Zone (2010-2011)



Source: Outbreak Response Toolkit (includes cases with positive respiratory specimens received on or before Jan 8, 2011).
For more information on data definitions and sources see [Annex: Data Notes section at the end of this report](#)

[Back to first page](#)

Table 2A: New Influenza cases (and age specific rates), by subtype, by age group, South Zone (Week 1: Jan 2-8, 2011)

	Flu A (Seasonal-H1)		Flu A (Seasonal-H3)		Flu A (Pandemic H1N1 2009)		Flu A (unresolved typing due to low viral load)		Flu B		Total	
	#	Rate (per 10,000)	#	Rate (per 10,000)	#	Rate (per 10,000)	#	Rate (per 10,000)	#	Rate (per 10,000)	#	Rate (per 10,000)
0 to <2 years	0	0.0	0	0.0	0	0.0	0	0.0	0	0.0	0	0.0
2 to <5 years	0	0.0	0	0.0	0	0.0	0	0.0	0	0.0	0	0.0
5 to <9 years	0	0.0	0	0.0	0	0.0	0	0.0	0	0.0	0	0.0
9 to <18 years	0	0.0	0	0.0	0	0.0	0	0.0	0	0.0	0	0.0
18 to <65 years	0	0.0	1	0.1	1	0.1	0	0.0	0	0.0	2	0.1
65 to <75 years	0	0.0	0	0.0	0	0.0	0	0.0	0	0.0	0	0.0
75+ years	0	0.0	0	0.0	0	0.0	0	0.0	0	0.0	0	0.0
Total	0	0.0	1	0.0	1	0.0	0	0.0	0	0.0	2	0.1

Table 2B: Cumulative Influenza cases (and age specific rates), by subtype, by age group, South Zone (Aug 29, 2010–Jan 8, 2011)

	Flu A (Seasonal-H1)		Flu A (Seasonal-H3)		Flu A (Pandemic H1N1 2009)		Flu A (unresolved typing due to low viral load)		Flu B		Total	
	#	Rate (per 10,000)	#	Rate (per 10,000)	#	Rate (per 10,000)	#	Rate (per 10,000)	#	Rate (per 10,000)	#	Rate (per 10,000)
0 to <2 years	0	0.0	1	1.2	0	0.0	0	0.0	0	0.0	1	1.2
2 to <5 years	0	0.0	3	2.6	0	0.0	0	0.0	0	0.0	3	2.6
5 to <9 years	0	0.0	0	0.0	0	0.0	0	0.0	0	0.0	0	0.0
9 to <18 years	0	0.0	0	0.0	0	0.0	0	0.0	0	0.0	0	0.0
18 to <65 years	0	0.0	7	0.4	1	0.1	0	0.0	0	0.0	8	0.5
65 to <75 years	0	0.0	0	0.0	0	0.0	0	0.0	0	0.0	0	0.0
75+ years	0	0.0	0	0.0	0	0.0	0	0.0	0	0.0	0	0.0
Total	0	0.0	11	0.4	1	<0.1	0	0.0	0	0.0	12	0.4

Source for Tables 2A & 2B: Outbreak Response Toolkit (includes cases with positive respiratory specimens received on or before Jan 8, 2011).

Population data values used to calculate rates are for June 30, 2009 and are estimated using actual population values from the Alberta Health Care Insurance Plan (AHCIP) Registration File as of March 31, 2009.

For more information on data definitions and sources see [Annex: Data Notes section at the end of this report](#)

SURVEILLANCE AND HEALTH STATUS ASSESSMENT

Public Health Surveillance

Report Date: January 11, 2011

An influenza report targeted to the general public is available at: <http://www.health.alberta.ca/health-info/influenza-evidence.html>

[Back to first page](#)

Attack rates in respiratory outbreaks

Since late August, there have been no respiratory outbreaks reported in the South Zone.

Influenza-like illness visits and “Left Without Being Seen”

This information is not available for the South Zone.

Respiratory related calls to Health Link Alberta

The number of calls to Health Link Alberta for cough or breathing difficulties by residents of South Zone was essentially unchanged in Week 1 (Jan 2 -8, 2011) compared to Week 52 (Dec 26, 2010 – Jan 1, 2011).

Percentage of visits to sentinel offices with Influenza-like illness (ILI)

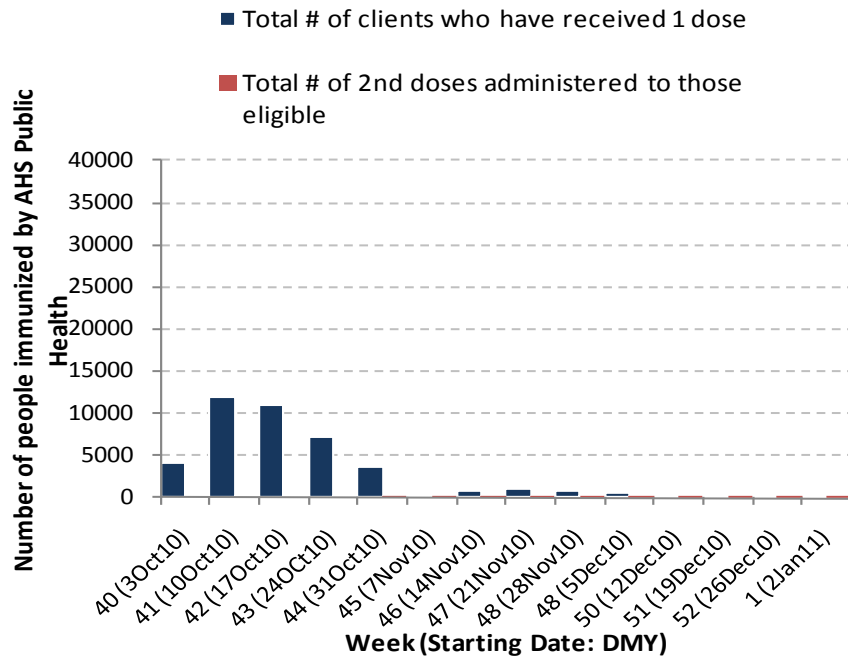
In Week 51 (Dec 19 – 25), the percentage of ILI-related visits to sentinel physician offices by residents of South Zone was similar to that in Week 50 (Dec 12 - 18). There were no reports of ILI-related visits in Week 52.

Percentage of visits to sentinel offices with lower respiratory tract infection (LRTI)

For the first time this season, there were reports of LRTI-related visits to sentinel physician offices by residents of the South Zone in week 52 (Dec 26, 2010 – Jan 1, 2011), but the LRTI-related visits was only 0.5% of all office visits.

[Back to first page](#)

Figure 2D: Number Immunized by AHS (Public Health), by week, South Zone (2010-2011)



Source: AHS Zones (doses do not include those delivered by external providers)
 Note: Immunization coverage rates will be reported at the end of the influenza season
 For more information on data definitions and sources see [Annex: Data Notes section at the end of this report](#)

SURVEILLANCE AND HEALTH STATUS ASSESSMENT

Public Health Surveillance

Report Date: January 11, 2011

An influenza report targeted to the general public is available at: <http://www.health.alberta.ca/health-info/influenza-evidence.html>

Table 2C: AHS (Public Health) Delivered Influenza Immunizations (with Cumulative totals), by priority group, South Zone (2010-2011)

[Back to first page](#)

Priority Group	Number Immunized (Week 1 – Jan 2-Jan 8, 2011)	Cumulative Number Immunized (since Oct 3, 2010)
Long term care staff	8	606
Health care workers	3	1,543
Pregnant women	3	292
Residents of long term care	0	728
65 years of age and over	8	15,553
All children 6 months up to and including 23 months*	Dose #1	1,290
	Dose #2	363
All children 24 months up to and including 59 months*	Dose #1	1,886
	Dose #2	80
High risk: 5 years up to and including 8 years*	Dose #1	483
	Dose #2	11
High risk: 9 years up to and including 64 years	1	4,057
Healthy: 5 years up to and including 8 years*	Dose #1	1,425
	Dose #2	36
Healthy: 9 years up to and including 64 years	13	14,359
Total number of clients who have received 1 dose	81	42,222
Total number of 2nd doses administered to those eligible*	24	490

Source: AHS Zones (doses do not include those delivered by external providers)

*Children under 9 years of age who have not received at least one dose of seasonal influenza vaccine in past years require two doses, given at least four weeks apart.

Note: Immunization coverage rates will be reported at the end of the influenza season

For more information on data definitions and sources see [Annex: Data Notes section at the end of this report](#)

SURVEILLANCE AND HEALTH STATUS ASSESSMENT

Public Health Surveillance

Report Date: January 11, 2011

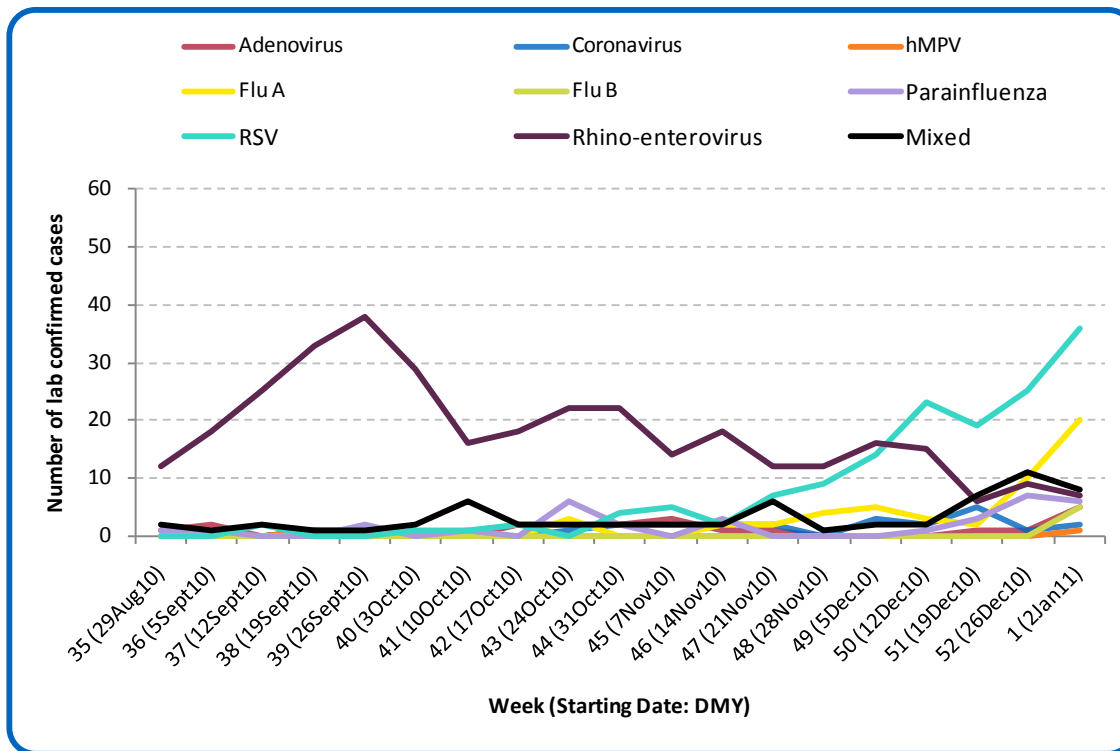
An influenza report targeted to the general public is available at: <http://www.health.alberta.ca/health-info/influenza-evidence.html>

SECTION 3: ZONE 2 - CALGARY

[Back to first page](#)

RSV and influenza activity continue to increase in Calgary Zone. Since the beginning of the season, a total of 56 cases of influenza have been confirmed in the Calgary Zone; including 36 sub-typed as influenza A (H3), twelve sub-typed as influenza A (H1N1) 2009, three typed as influenza A with unresolved sub-typing and five sub-typed as influenza B.

Figure 3A: Laboratory confirmed respiratory virus cases, by virus type, by week, Calgary Zone (2010-2011)



Sources: DIAL – Provincial Laboratory and the Outbreak Response Toolkit (includes cases with positive respiratory specimens received on or before Jan 8, 2011). For more information on data definitions and sources see [Annex: Data Notes section at the end of this report](#)

SURVEILLANCE AND HEALTH STATUS ASSESSMENT

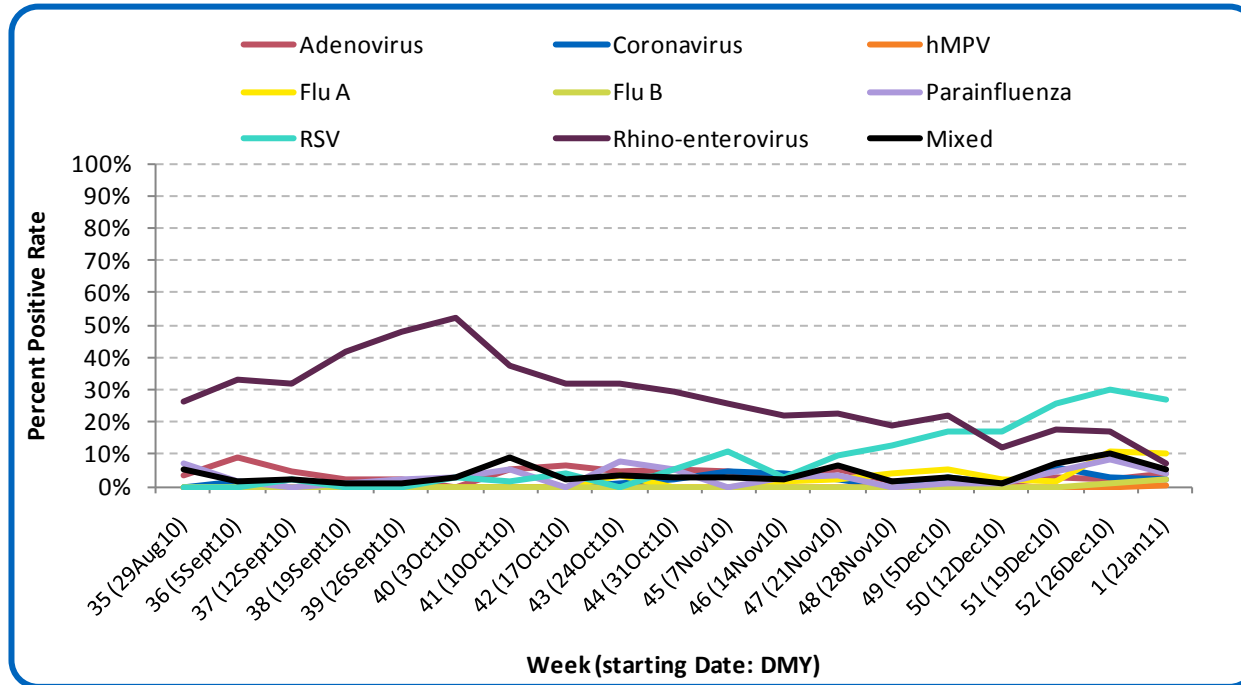
Public Health Surveillance

Report Date: January 11, 2011

An influenza report targeted to the general public is available at: <http://www.health.alberta.ca/health-info/influenza-evidence.html>

[Back to first page](#)

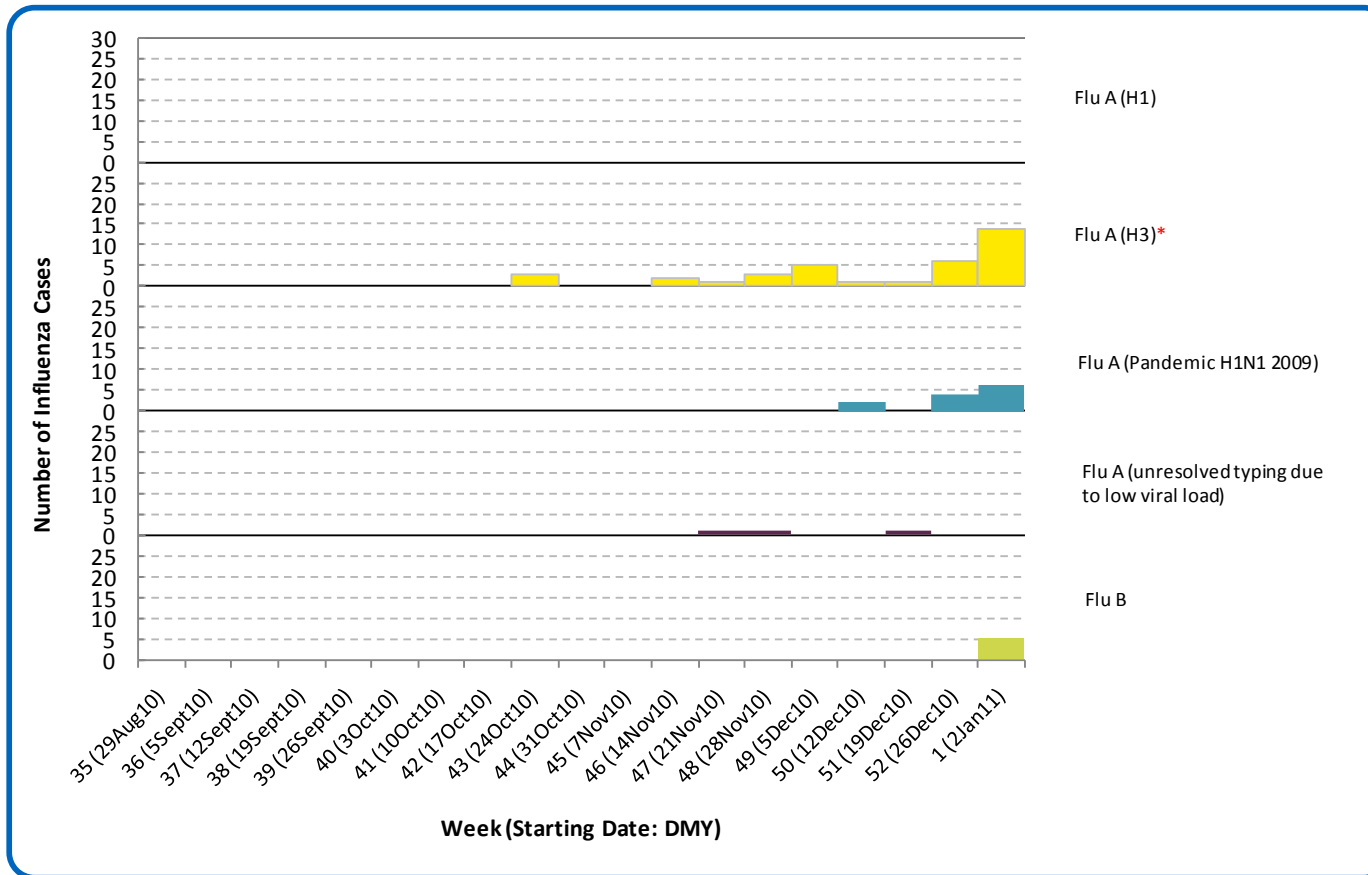
Figure 3B: Respiratory Specimen Percent Positive Rates, by virus type, by week, Calgary Zone (2010-2011)



Source: DIAL – Provincial Laboratory (includes cases with positive respiratory specimens received on or before Jan 8, 2011)
For more information on data definitions and sources see [Annex: Data Notes section at the end of this report](#)

[Back to first page](#)

Figure 3C: Laboratory confirmed Influenza cases, by subtype, by week specimen received, Calgary Zone (2010-2011)



*Note: One specimen was positive for both RSV and influenza A (H3).

Source: Outbreak Response Toolkit (includes cases with positive respiratory specimens received on or before Jan 8, 2011).

For more information on data definitions and sources see [Annex: Data Notes section at the end of this report](#)

SURVEILLANCE AND HEALTH STATUS ASSESSMENT

Public Health Surveillance

Report Date: January 11, 2011

An influenza report targeted to the general public is available at: <http://www.health.alberta.ca/health-info/influenza-evidence.html>

[Back to first page](#)

Table 3A: New Influenza cases (and age specific rates), by subtype, by age group, Calgary Zone (Week 1: Jan 2-8, 2011)

	Flu A (Seasonal-H1)		Flu A (Seasonal-H3)		Flu A (Pandemic H1N1 2009)		Flu A (unresolved typing due to low viral load)			Flu B		Total
	#	Rate (per 10,000)	#	Rate (per 10,000)	#	Rate (per 10,000)	#	Rate (per 10,000)	#	Rate (per 10,000)	#	Rate (per 10,000)
0 to <2 years	0	0.0	0	0.0	2	0.5	0	0.0	1	0.3	3	0.8
2 to <5 years	0	0.0	1	0.2	0	0.0	0	0.0	1	0.2	2	0.4
5 to <9 years	0	0.0	0	0.0	0	0.0	0	0.0	0	0.0	0	0.0
9 to <18 years	0	0.0	1	0.1	0	0.0	0	0.0	0	0.0	1	0.1
18 to <65 years	0	0.0	9	0.1	4	<0.1	0	0.0	3	0.0	16	0.2
65 to <75 years	0	0.0	2	0.3	0	0.0	0	0.0	0	0.0	2	0.3
75+ years	0	0.0	1	0.2	0	0.0	0	0.0	0	0.0	1	0.2
Total	0	0.0	14	0.1	6	<0.1	0	0.0	5	0.0	25	0.2

Table 3B: Cumulative Influenza cases (and age specific rates), by subtype, by age group, Calgary Zone (Aug 29, 2010 – Jan 8, 2011)

	Flu A (Seasonal-H1)		Flu A (Seasonal-H3)		Flu A (Pandemic H1N1 2009)		Flu A (unresolved typing due to low viral load)			Flu B		Total
	#	Rate (per 10,000)	#	Rate (per 10,000)	#	Rate (per 10,000)	#	Rate (per 10,000)	#	Rate (per 10,000)	#	Rate (per 10,000)
0 to <2 years	0	0.0	2	0.5	2	0.5	0	0.0	1	0.3	5	1.3
2 to <5 years	0	0.0	2	0.4	1	0.2	1	0.2	1	0.2	5	1.0
5 to <9 years	0	0.0	1	0.2	0	0.0	0	0.0	0	0.0	1	0.2
9 to <18 years	0	0.0	2	0.1	0	0.0	1	0.1	0	0.0	3	0.2
18 to <65 years	0	0.0	20	0.2	9	0.1	1	<0.1	3	<0.1	33	0.4
65 to <75 years	0	0.0	4	0.6	0	0.0	0	0.0	0	0.0	4	0.6
75+ years	0	0.0	5	0.8	0	0.0	0	0.0	0	0.0	5	0.8
Total	0	0.0	36	0.3	12	0.1	3	<0.1	5	<0.1	56	0.4

Source for tables 3A & 3B: Outbreak Response Toolkit (includes cases with positive respiratory specimens received on or before Jan 8, 2011).

Population data values used to calculate rates are for June 30, 2009 and are estimated using actual population values from the Alberta Health Care Insurance Plan (AHCIP) Registration File as of March 31, 2009.

For more information on data definitions and sources see [Annex: Data Notes section at the end of this report](#)

SURVEILLANCE AND HEALTH STATUS ASSESSMENT

Public Health Surveillance

Report Date: January 11, 2011

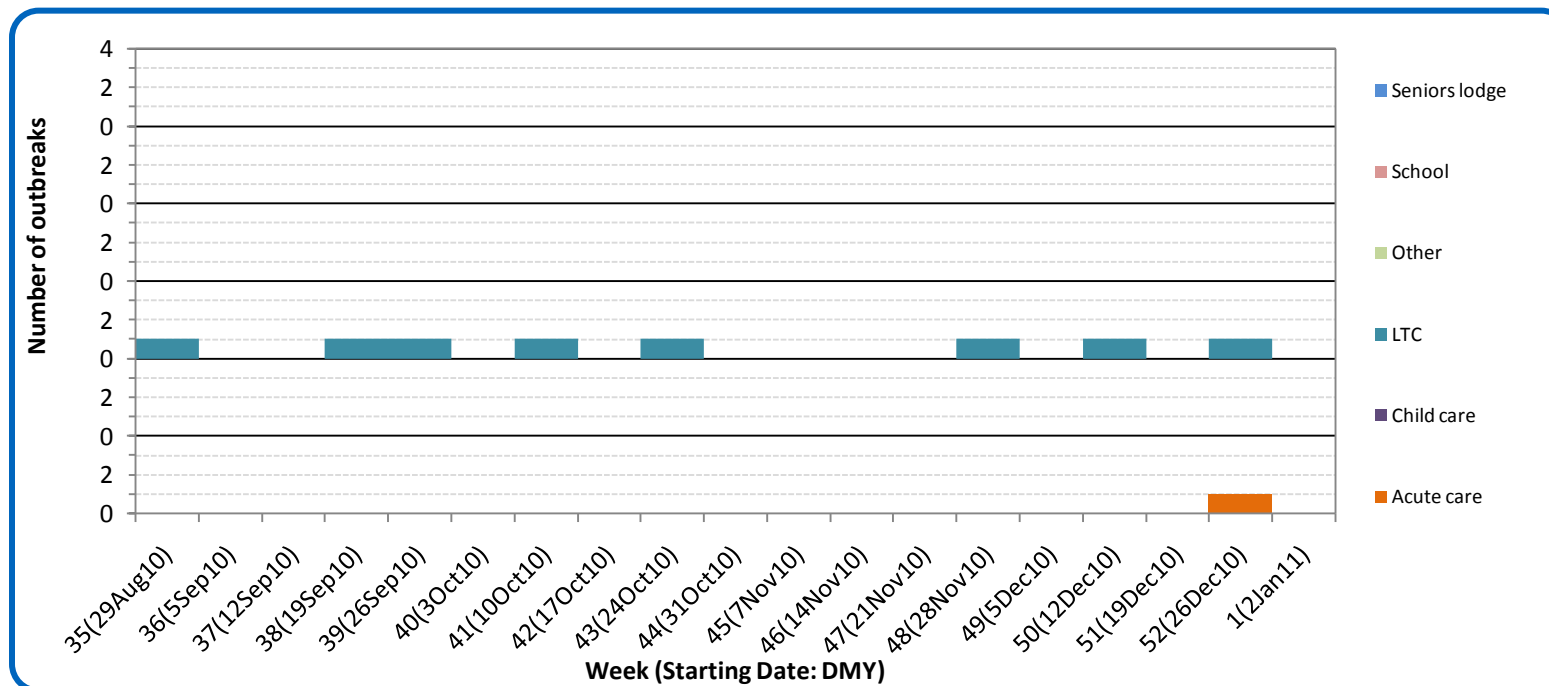
An influenza report targeted to the general public is available at: <http://www.health.alberta.ca/health-info/influenza-evidence.html>

[Back to first page](#)

The outbreak in a Calgary Zone long term care facility that occurred in Week 52 (Dec 26, 2010 – Jan 1, 2011) and was mentioned in last week’s report was confirmed as rhino-enterovirus. Another outbreak in an acute care hospital (with an onset date of Dec 29, 2010) was also reported and has since been confirmed as influenza (H3). This is the first influenza outbreak to be confirmed in a hospital in the province this season.

Please note, in last week’s report, a Calgary Zone long term care facility outbreak (with an onset date of Dec 17, 2010) was erroneously described as a parainfluenza outbreak. In fact, it should have been attributed to rhino-enterovirus.

Figure 3D: Respiratory outbreaks, by facility type, by onset week, Calgary Zone (2010-2011); school outbreaks may not have a laboratory confirmation)



Source: Alberta Outbreak Reporting Form as of 23:59 on Jan 8, 2011. LTC stands for long term care facility. For more information on data definitions and sources see [Annex: Data Notes section at the end of this report](#)

SURVEILLANCE AND HEALTH STATUS ASSESSMENT

Public Health Surveillance

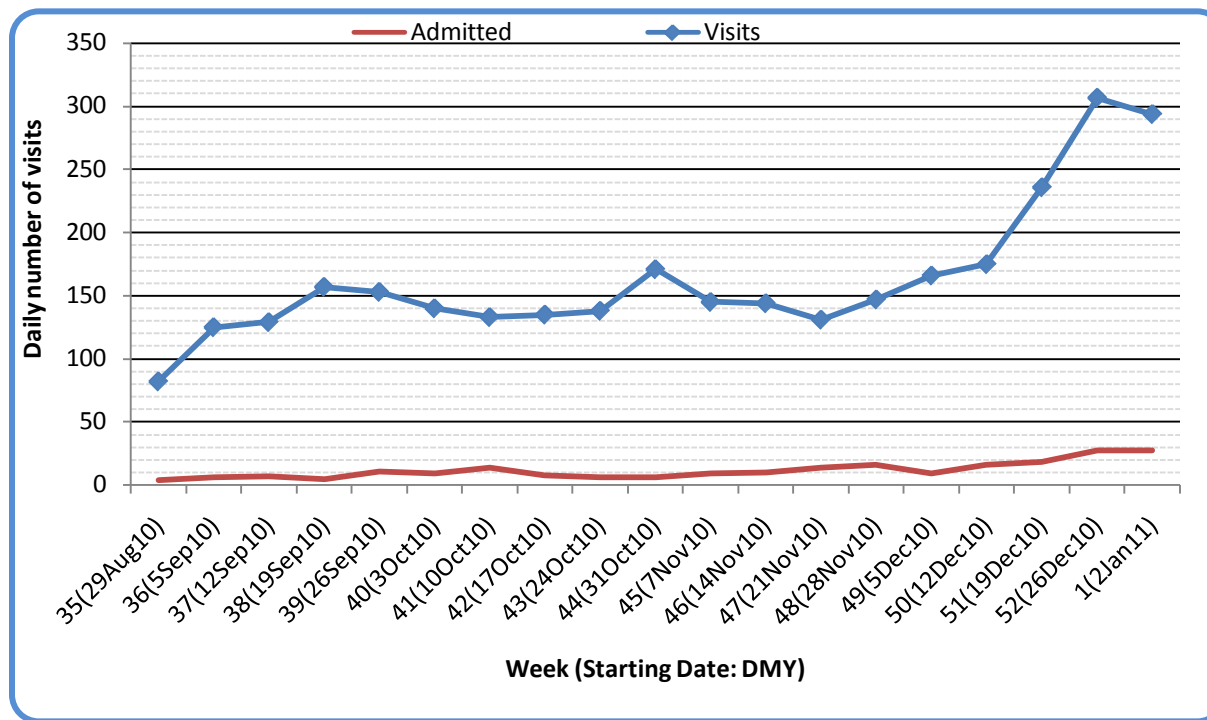
Report Date: January 11, 2011

An influenza report targeted to the general public is available at: <http://www.health.alberta.ca/health-info/influenza-evidence.html>

[Back to first page](#)

The number of visits to emergency departments/urgent care centers by residents of the City of Calgary for symptoms with cough decreased by 4% in Week 1 (Jan 2 – 8, 2011) compared to Week 52 (Dec 26, 2010 – Jan 1, 2011), whereas the number of hospital admissions remained unchanged. The number of visits of patients with cough symptoms who left ED's without being seen increased by 15% in the same period.

Figure 3E: Visits to urban emergency departments/urgent care centers in the City of Calgary with cough symptoms and admissions to hospitals, by visit week (2010-2011)



Source: Alberta Real Time Syndromic Surveillance Net (ARTSSN) as of 23:59 on Jan 8, 2011.
For more information on data definitions and sources see [Annex: Data Notes section at the end of this report](#)

SURVEILLANCE AND HEALTH STATUS ASSESSMENT

Public Health Surveillance
Report Date: January 11, 2011

An influenza report targeted to the general public is available at: <http://www.health.alberta.ca/health-info/influenza-evidence.html>

[Back to first page](#)

Attack rates in respiratory outbreaks

The rhino-enterovirus outbreak in a Calgary Zone long term care facility had an attack rate of 50%. The influenza A (H3) outbreak in the hospital had a preliminary attack rate of 20%.

Influenza-like illness visits and “Left Without Being seen”

The number of visits to urban emergency departments/ urgent care centers (ED’s) for influenza-like illness (ILI) in the City of Calgary was 16% lower in Week 1 (Jan 2 -8, 2011) compared to Week 52 (Dec 26, 2010 – Jan 1, 2011), bringing the percentage of ILI positive visits down to 7% of all screened visits. The number of hospital admissions of ILI patients increased by 18% and is the highest it has been this season. The number of visits of patients with ILI who left ED’s without being seen decreased by 24% for the same comparison period.

Respiratory related calls to Health Link Alberta

The number of calls to Health Link Alberta for cough or breathing difficulties by residents of Calgary Zone was approximately 10% less in Week 1 (Jan 2 -8, 2011) compared to Week 52 (Dec 26, 2010 – Jan 1, 2011). The decreasing pattern seen here is similar to that seen for ED visits for cough symptoms.

Percentage of visits to sentinel offices with influenza-like illness (ILI)

The percentage of ILI-related visits to sentinel physician offices by residents of Calgary Zone in Week 52 (Dec 26, 2010 – Jan 1, 2011) was twice as high as it was in Week 50 (Dec 12 - 18), reaching the highest it has been this season.

Percentage of visits to sentinel offices with lower respiratory tract infection (LRTI)

The percentage of LRTI-related visits to sentinel physician offices by residents of Calgary Zone in Week 52 (Dec 26, 2010 – Jan 1, 2011) was comparable to that in Week 50 (Dec 12-18), remaining at a high level.

The combined percentage for ILI- and LRTI-related visits was 33% higher in Week 52 compared to Week 50. At just over 2%, it is the highest it has been this season. The recent increase is consistent with the increase in ED visits and Health Link Alberta calls for similar symptoms.

SURVEILLANCE AND HEALTH STATUS ASSESSMENT

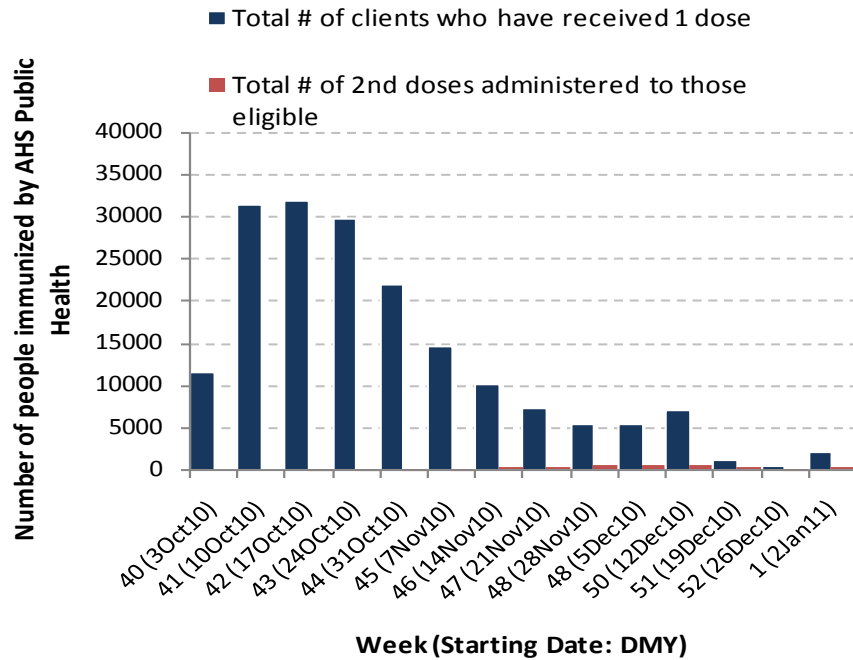
Public Health Surveillance

Report Date: January 11, 2011

An influenza report targeted to the general public is available at: <http://www.health.alberta.ca/health-info/influenza-evidence.html>

[Back to first page](#)

Figure 3F: Number Immunized by AHS (Public Health), by week, Calgary Zone (2010-2011)



Source: AHS Zones (doses do not include those delivered by external providers)
 Note: Immunization coverage rates will be reported at the end of the influenza season
 For more information on data definitions and sources see [Annex: Data Notes section at the end of this report](#)

Table 3C: AHS (Public Health) Delivered Influenza Immunizations (with Cumulative totals), by priority group, Calgary Zone (2010-2011)

[Back to first page](#)

Priority Group	Number Immunized (Week 1 – Jan 2-Jan 8, 2011)	Cumulative Number Immunized (since Oct 3, 2010)
Long term care staff	0	441
Health care workers	19	5,215
Pregnant women	49	1,799
Residents of long term care	0	705
65 years of age and over	84	44,375
All children 6 months up to and including 23 months*	Dose #1	511
	Dose #2	205
All children 24 months up to and including 59 months*	Dose #1	218
	Dose #2	44
High risk: 5 years up to and including 8 years*	Dose #1	52
	Dose #2	2
High risk: 9 years up to and including 64 years	126	19,513
Healthy: 5 years up to and including 8 years*	Dose #1	137
	Dose #2	11
Healthy: 9 years up to and including 64 years	1,046	79,866
Total number of clients who have received 1 dose	2,242	181,097
Total number of 2nd doses administered to those eligible*	262	2,639

Source: AHS Zones (doses do not include those delivered by external providers)

*Children under 9 years of age who have not received at least one dose of seasonal influenza vaccine in past years require two doses, given at least four weeks apart.

Note: Immunization coverage rates will be reported at the end of the influenza season

For more information on data definitions and sources see [Annex: Data Notes section at the end of this report](#)

SURVEILLANCE AND HEALTH STATUS ASSESSMENT

Public Health Surveillance

Report Date: January 11, 2011

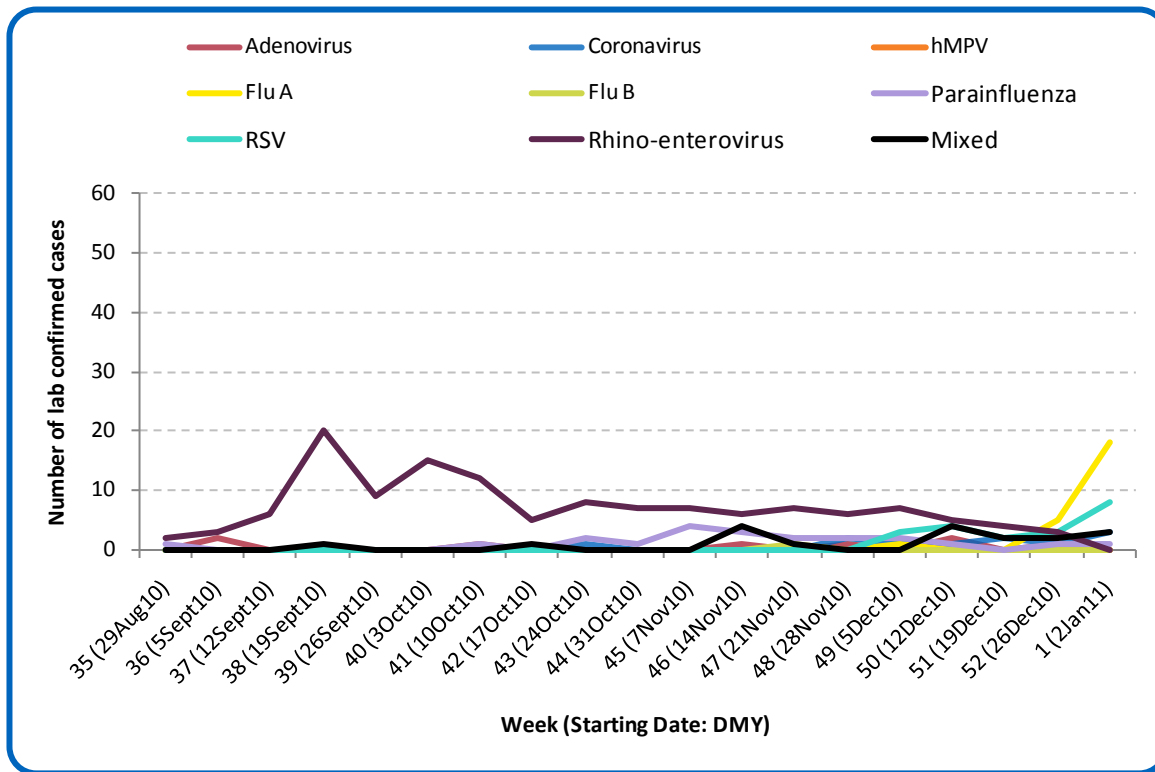
An influenza report targeted to the general public is available at: <http://www.health.alberta.ca/health-info/influenza-evidence.html>

SECTION 4: ZONE 3 - CENTRAL

[Back to first page](#)

The number of laboratory confirmed cases of influenza has increased quite sharply in Central Zone over the last week, particularly the number of influenza A (H3) cases among adults aged 75 years and over. At this point in the season, the age-specific rate for confirmed cases of influenza among this group is currently 5.2 per 10,000. For all other age groups, it is less than 1 per 10,000. Since the beginning of the season, a total of 25 Influenza cases have been confirmed in Central Zone.

Figure 4A: Laboratory confirmed respiratory virus cases, by virus type, by week, Central Zone (2010-2011)



Sources: DIAL – Provincial Laboratory and the Outbreak Response Toolkit (includes cases with positive respiratory specimens received on or before Jan 8, 2011). For more information on data definitions and sources see [Annex: Data Notes section at the end of this report](#)

SURVEILLANCE AND HEALTH STATUS ASSESSMENT

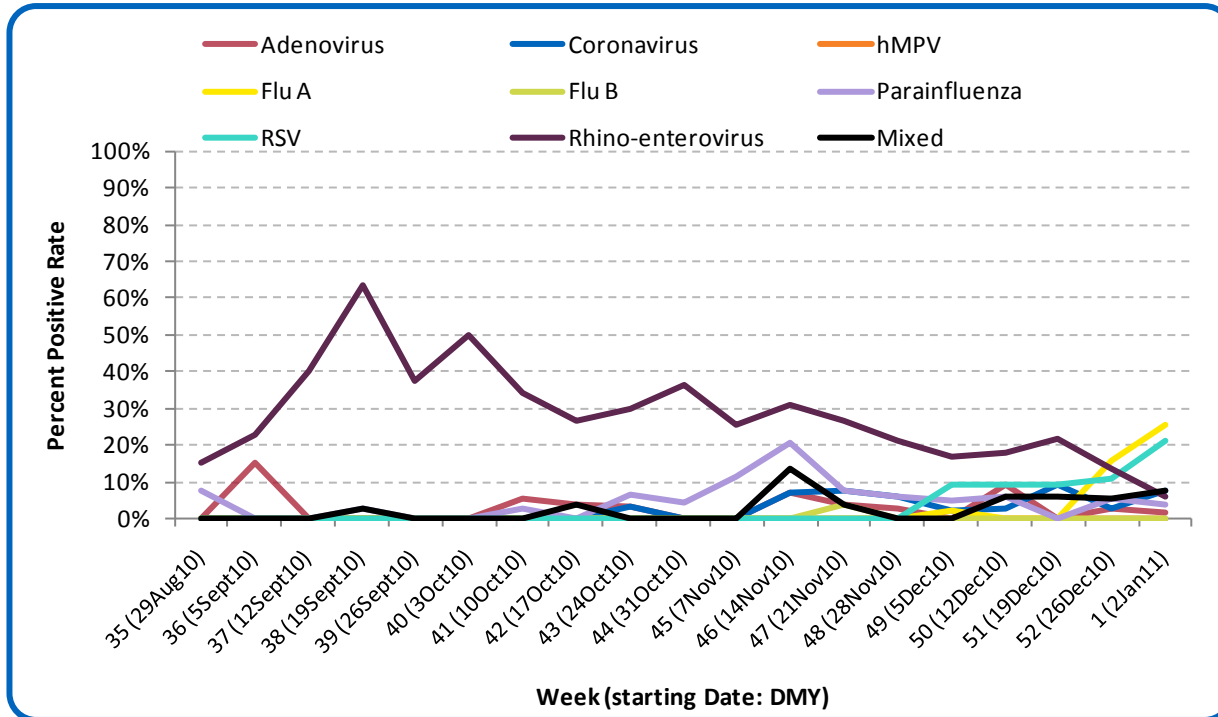
Public Health Surveillance

Report Date: January 11, 2011

An influenza report targeted to the general public is available at: <http://www.health.alberta.ca/health-info/influenza-evidence.html>

Figure 4B: Respiratory Specimen Percent Positive Rates, by virus type, by week, Central Zone (2010-2011)

[Back to first page](#)



Source: DIAL – Provincial Laboratory (includes cases with positive respiratory specimens received on or before Jan 8, 2011)
For more information on data definitions and sources see [Annex: Data Notes section at the end of this report](#)

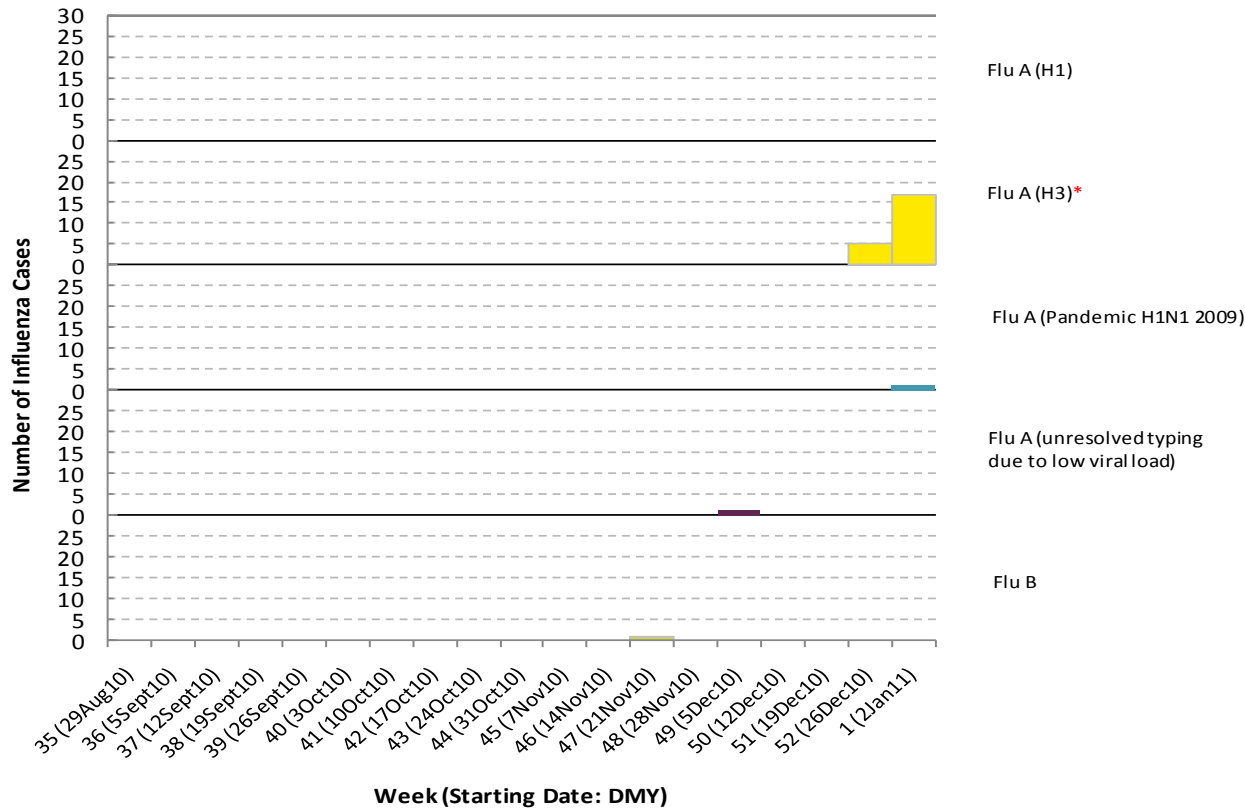
SURVEILLANCE AND HEALTH STATUS ASSESSMENT

Public Health Surveillance

Report Date: January 11, 2011

An influenza report targeted to the general public is available at: <http://www.health.alberta.ca/health-info/influenza-evidence.html>

Figure 4C: Laboratory confirmed Influenza cases, by subtype, by week specimen received, Central Zone (2010-2011)



*Note: One specimen was positive for both RSV and influenza A (H3).

Source: Outbreak Response Toolkit (includes cases with positive respiratory specimens received on or before Jan 8, 2011).

For more information on data definitions and sources see [Annex: Data Notes section at the end of this report](#)

SURVEILLANCE AND HEALTH STATUS ASSESSMENT

Public Health Surveillance

Report Date: January 11, 2011

An influenza report targeted to the general public is available at: <http://www.health.alberta.ca/health-info/influenza-evidence.html>

[Back to first page](#)

Table 4A: New Influenza cases (and age specific rates), by subtype, by age group, Central Zone (Week 1: Jan 2-8, 2011)

	Flu A (Seasonal-H1)		Flu A (Seasonal-H3)		Flu A (Pandemic H1N1 2009)		Flu A (unresolved typing due to low viral load)		Flu B		Total	
	#	Rate (per 10,000)	#	Rate (per 10,000)	#	Rate (per 10,000)	#	Rate (per 10,000)	#	Rate (per 10,000)	#	Rate (per 10,000)
0 to <2 years	0	0.0	0	0.0	0	0.0	0	0.0	0	0.0	0	0.0
2 to <5 years	0	0.0	0	0.0	0	0.0	0	0.0	0	0.0	0	0.0
5 to <9 years	0	0.0	0	0.0	0	0.0	0	0.0	0	0.0	0	0.0
9 to <18 years	0	0.0	0	0.0	0	0.0	0	0.0	0	0.0	0	0.0
18 to <65 years	0	0.0	3	0.1	1	<0.1	0	0.0	0	0.0	4	0.1
65 to <75 years	0	0.0	0	0.0	0	0.0	0	0.0	0	0.0	0	0.0
75+ years	0	0.0	14	5.2	0	0.0	0	0.0	0	0.0	14	5.2
Total	0	0.0	17	0.4	1	<0.1	0	0.0	0	0.0	18	0.4

Table 4B: Cumulative Influenza cases (and age specific rates), by subtype, by age group, Central Zone (Aug 29, 2010 – Jan 8, 2011)

	Flu A (Seasonal-H1)		Flu A (Seasonal-H3)		Flu A (Pandemic H1N1 2009)		Flu A (unresolved typing due to low viral load)		Flu B		Total	
	#	Rate (per 10,000)	#	Rate (per 10,000)	#	Rate (per 10,000)	#	Rate (per 10,000)	#	Rate (per 10,000)	#	Rate (per 10,000)
0 to <2 years	0	0.0	1	0.8	0	0.0	0	0.0	0	0.0	1	0.8
2 to <5 years	0	0.0	0	0.0	0	0.0	0	0.0	0	0.0	0	0.0
5 to <9 years	0	0.0	0	0.0	0	0.0	0	0.0	0	0.0	0	0.0
9 to <18 years	0	0.0	0	0.0	0	0.0	0	0.0	0	0.0	0	0.0
18 to <65 years	0	0.0	5	0.2	1	<0.1	1	<0.1	1	<0.1	8	0.3
65 to <75 years	0	0.0	2	0.7	0	0.0	0	0.0	0	0.0	2	0.7
75+ years	0	0.0	14	5.2	0	0.0	0	0.0	0	0.0	14	5.2
Total	0	0.0	22	0.5	1	<0.1	1	<0.1	1	<0.1	25	0.6

Source for Tables 4A & 4B: Outbreak Response Toolkit (includes cases with positive respiratory specimens received on or before Jan 8, 2011).

Population data values used to calculate rates are for June 30, 2009 and are estimated using actual population values from the Alberta Health Care Insurance Plan (AHCIP) Registration File as of March 31, 2009.

For more information on data definitions and sources see Annex: Data Notes section at the end of this report

SURVEILLANCE AND HEALTH STATUS ASSESSMENT

Public Health Surveillance

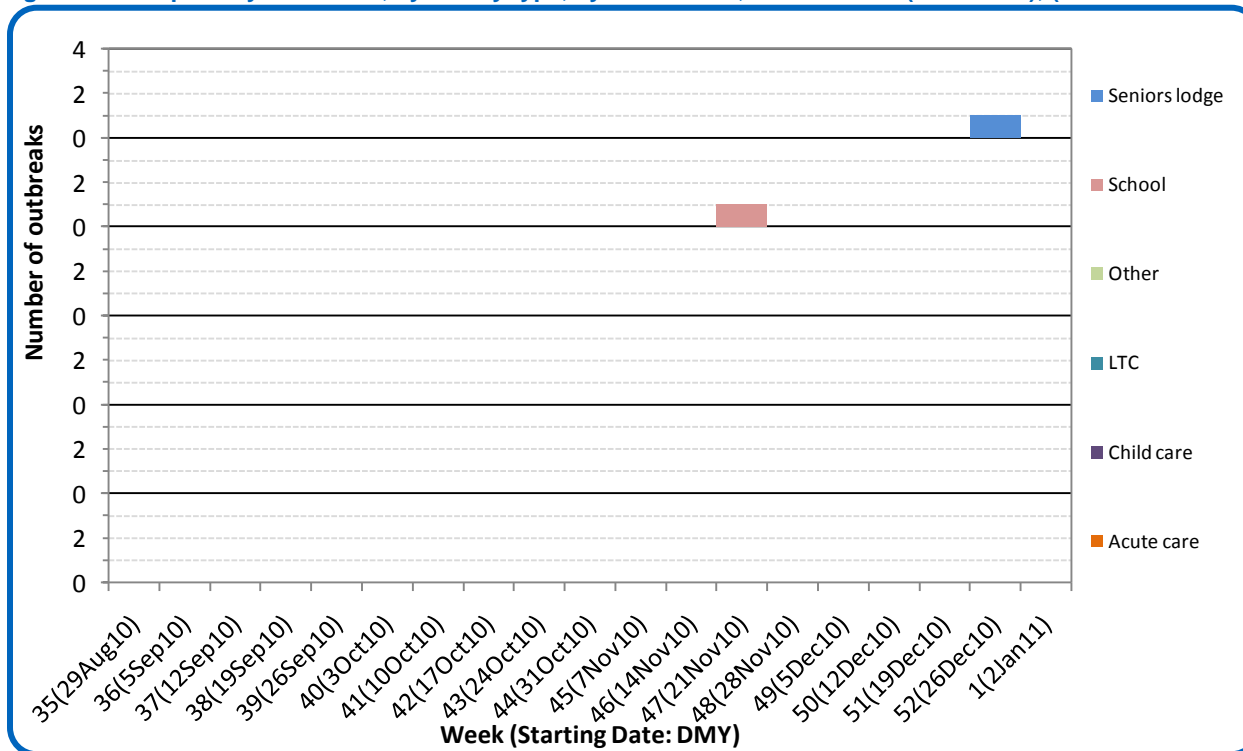
Report Date: January 11, 2011

An influenza report targeted to the general public is available at: <http://www.health.alberta.ca/health-info/influenza-evidence.html>

[Back to first page](#)

The respiratory outbreak in the Central Zone seniors' lodge/assisted living facility (with a symptom onset date of Dec 30, 2010) described in last week's report has now been confirmed as an influenza (H3) outbreak. Another outbreak, also in a seniors' lodge/assisted living facility, with an onset date of Dec 30, 2010, is currently pending laboratory confirmation.

Figure 4D: Respiratory outbreaks, by facility type, by onset week, Central Zone (2010-2011); (school outbreaks may not have a laboratory confirmation)



Source: Alberta Outbreak Reporting Form as of 23:59 on Jan 8, 2011.

For more information on data definitions and sources see Annex: Data Notes section at the end of this report. LTC stands for long term care facility.

SURVEILLANCE AND HEALTH STATUS ASSESSMENT

Public Health Surveillance

Report Date: January 11, 2011

An influenza report targeted to the general public is available at: <http://www.health.alberta.ca/health-info/influenza-evidence.html>

[Back to first page](#)

Attack Rates in respiratory outbreaks

The influenza A (H3) outbreak had an attack rate of 6%; the outbreak pending laboratory confirmation had a preliminary attack rate of 11%.

Influenza-like illness visits and “Left Without Being seen”

There are no data available from this zone.

Respiratory related calls to Health Link Alberta

The number of calls to Health Link Alberta by residents of Central Zone for cough or breathing difficulties was 30% higher in Week 1 (Jan 2-8, 2011) than in Week 52 (Dec 26, 2010 – Jan 1, 2011), reaching the highest level of this season.

Percentage of visits to sentinel offices with Influenza-like illness (ILI)

There were reports of ILI-related visits to sentinel physician offices by residents of Central Zone in Week 51 (Dec 19 - 25), but the percentage was very low. No ILI-related visits were reported for Week 52 (Dec 26, 2010 – Jan 1, 2011).

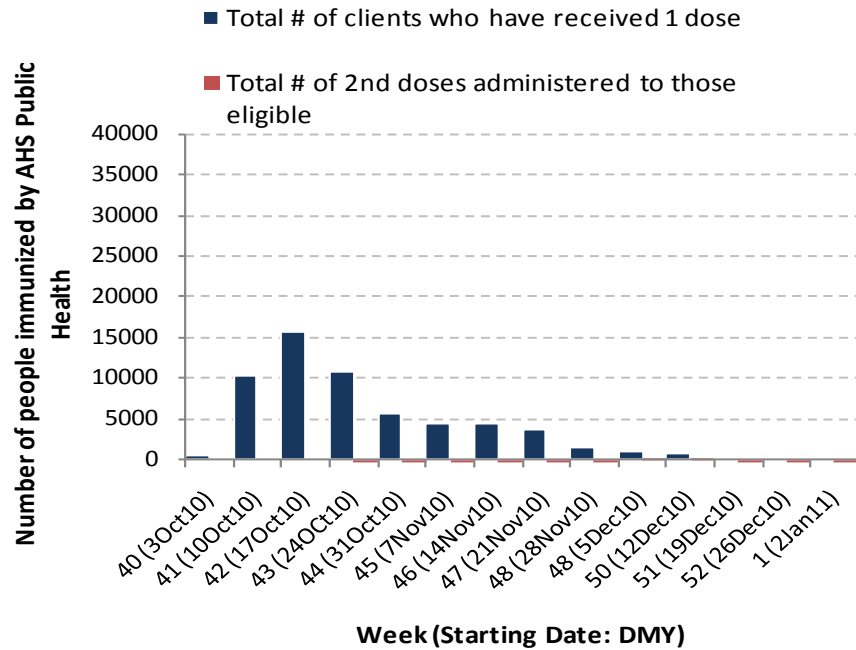
Percentage of visits to sentinel offices with lower respiratory tract infection (LTRI)

The percentage of LTRI-related visits to sentinel physician offices by residents of Central Zone was close to 1% in Weeks 51 (Dec 19 - 25) and 52 (Dec 26, 2010 – Jan 1, 2011).

The combined percentage of ILI- and LTRI-related visits to sentinel physician offices by residents of Central Zone was just over 1% in Weeks 51 and 52.

[Back to first page](#)

Figure 4E: Number Immunized by AHS (Public Health), by week, Central Zone (2010-2011)



Source: AHS Zones (doses do not include those delivered by external providers)
 Note: Immunization coverage rates will be reported at the end of the influenza season
 For more information on data definitions and sources see [Annex: Data Notes section at the end of this report](#)

[Back to first page](#)

Table 4C: AHS (Public Health) Delivered Influenza Immunizations (with Cumulative totals), by priority group, Central Zone (2010-2011)

Priority Group	Number Immunized (Week 1 – Jan 2-Jan 8, 2011)	Cumulative Number Immunized (since Oct 3, 2010)
Long term care staff	1	398
Health care workers	13	2,497
Pregnant women	2	412
Residents of long term care	0	1,099
65 years of age and over	24	21,952
All children 6 months up to and including 23 months*	Dose #1	1,846
	Dose #2	534
All children 24 months up to and including 59 months*	Dose #1	2,143
	Dose #2	128
High risk: 5 years up to and including 8 years*	Dose #1	611
	Dose #2	22
High risk: 9 years up to and including 64 years	11	6,727
Healthy: 5 years up to and including 8 years*	Dose #1	1,877
	Dose #2	55
Healthy: 9 years up to and including 64 years	60	20,267
Total number of clients who have received 1 dose	197	59,829
Total number of 2nd doses administered to those eligible*	55	739

Source: AHS Zones (doses do not include those delivered by external providers)

*Children under 9 years of age who have not received at least one dose of seasonal influenza vaccine in past years require two doses, given at least four weeks apart.

Note: Immunization coverage rates will be reported at the end of the influenza season

For more information on data definitions and sources see [Annex: Data Notes section at the end of this report](#)

SURVEILLANCE AND HEALTH STATUS ASSESSMENT

Public Health Surveillance

Report Date: January 11, 2011

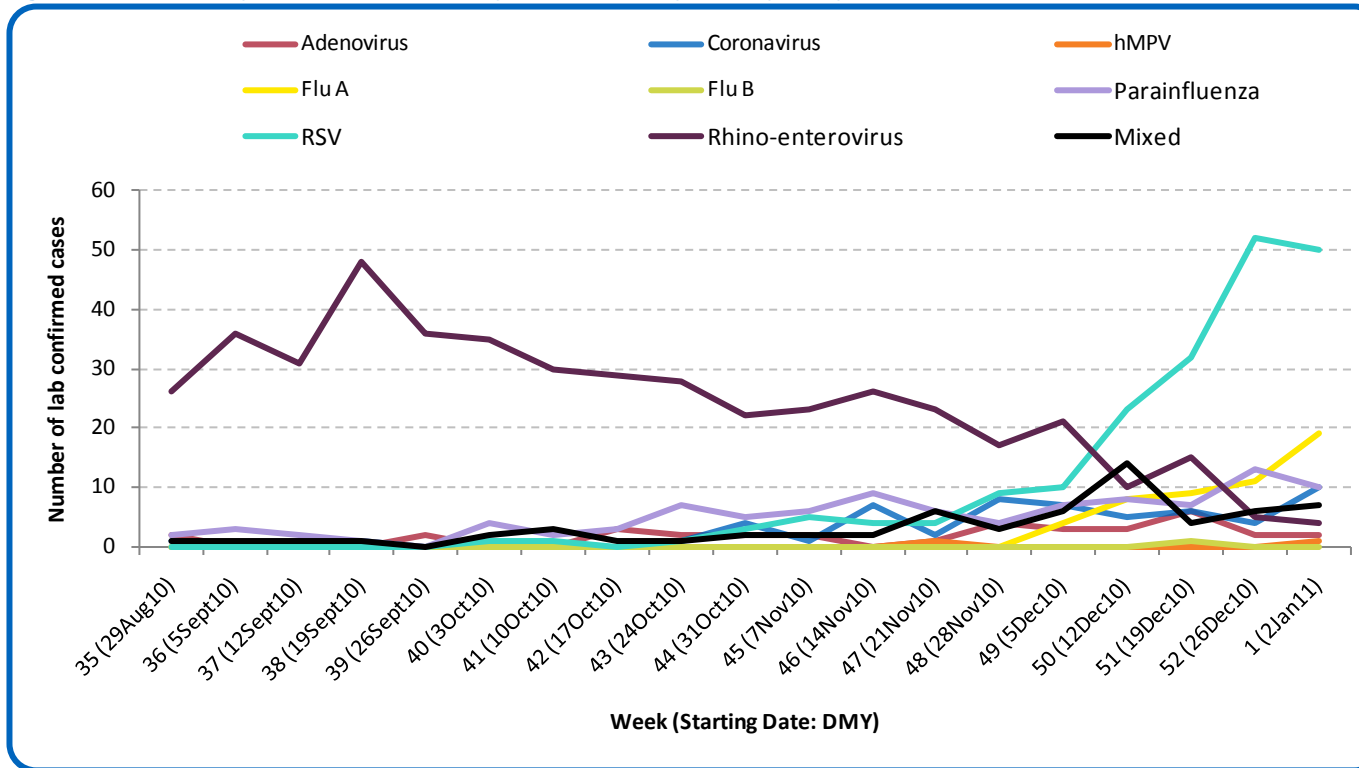
An influenza report targeted to the general public is available at: <http://www.health.alberta.ca/health-info/influenza-evidence.html>

SECTION 5: ZONE 4 – EDMONTON

[Back to first page](#)

RSV continues to be the predominant respiratory virus circulating in Edmonton Zone. In addition, there were 19 new cases of influenza A confirmed last week (15 were sub-typed as H3, 2 were sub-typed as H1N1 2009, 2 had unresolved sub-typing due to low viral load). The new influenza cases include four infants under the age of two years, one child aged two to less than five years, one child aged nine to less than 18 years, nine adults aged 18 to less than 65 years of age, and four adults aged 65 or over. This season, there have been a total of 52 Influenza cases confirmed in the Edmonton Zone.

Figure 5A: Laboratory confirmed respiratory virus cases, by virus type, by week, Edmonton Zone (2010-2011)



Sources: DIAL – Provincial Laboratory and the Outbreak Response Toolkit (includes cases with positive respiratory specimens received on or before Jan 8, 2011). For more information on data definitions and sources see [Annex: Data Notes section at the end of this report](#)

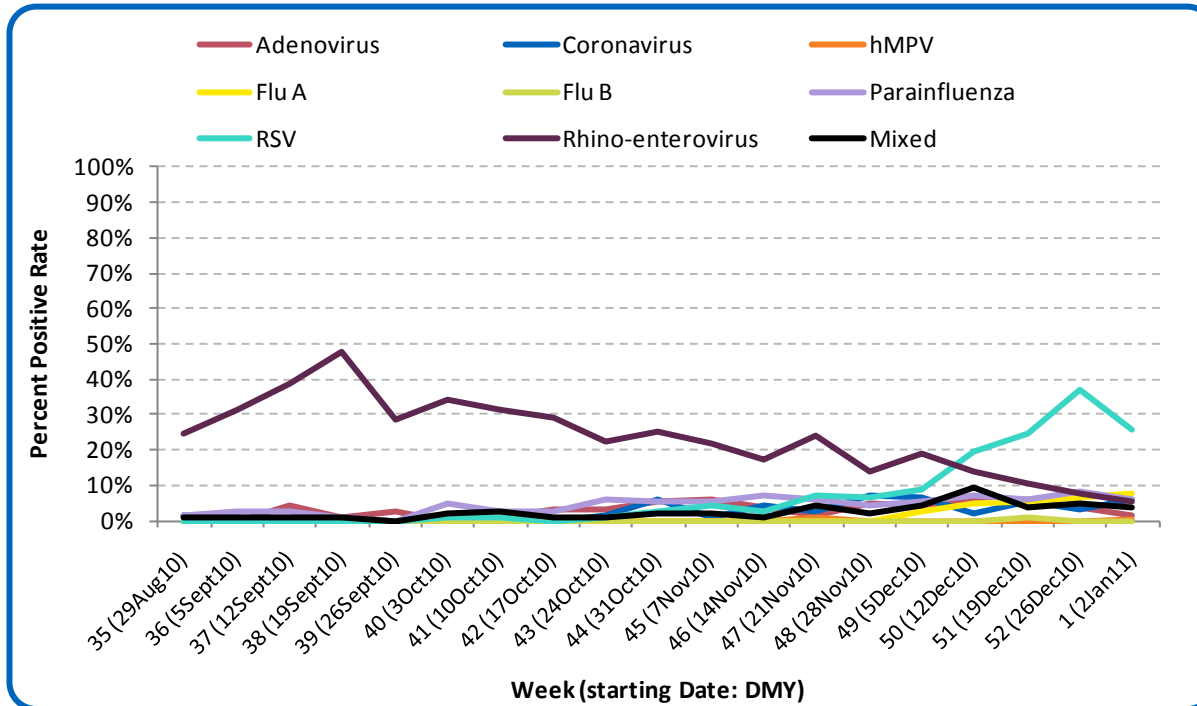
SURVEILLANCE AND HEALTH STATUS ASSESSMENT

Public Health Surveillance
Report Date: January 11, 2011

An influenza report targeted to the general public is available at: <http://www.health.alberta.ca/health-info/influenza-evidence.html>

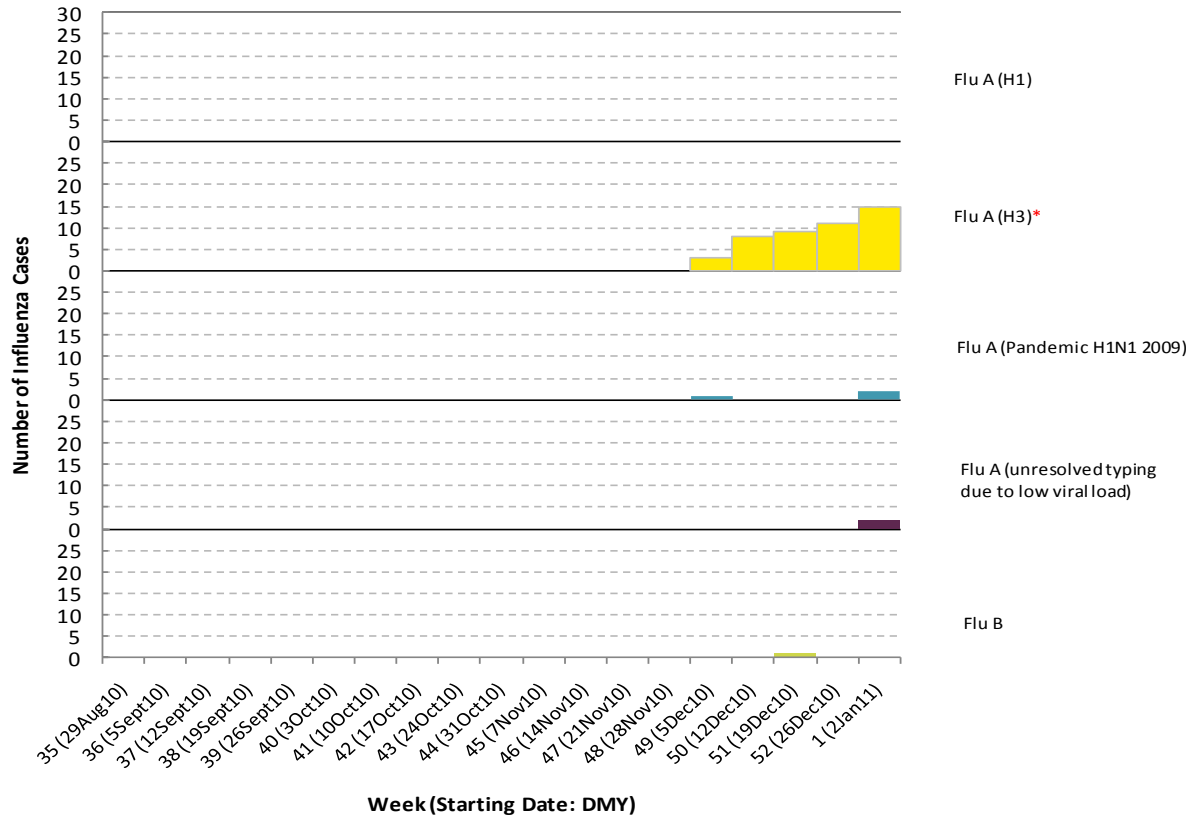
[Back to first page](#)

Figure 5B: Respiratory Specimen Percent Positive Rates, by virus type, by week, Edmonton Zone (2010-2011)



Source: DIAL – Provincial Laboratory (includes cases with positive respiratory specimens received on or before Jan 8, 2011)
For more information on data definitions and sources see [Annex: Data Notes section at the end of this report](#)

Figure 5C: Laboratory confirmed Influenza cases, by subtype, by week specimen received, Edmonton Zone (2010-2011)



*Note: One specimen was positive for both RSV and influenza A (H3).

Source: Outbreak Response Toolkit (includes cases with positive respiratory specimens received on or before Jan 8, 2011).

For more information on data definitions and sources see [Annex: Data Notes section at the end of this report](#)

[Back to first page](#)

Table 5A: New Influenza cases (and age specific rates), by subtype, by age group, Edmonton Zone (Week 1: Jan 2-8, 2011)

	Flu A (Seasonal-H1)		Flu A (Seasonal-H3)		Flu A (Pandemic H1N1 2009)		Flu A (unresolved typing due to low viral load)		Flu B		Total	
	#	Rate (per 10,000)	#	Rate (per 10,000)	#	Rate (per 10,000)	#	Rate (per 10,000)	#	Rate (per 10,000)	#	Rate (per 10,000)
0 to <2 years	0	0.0	2	0.7	1	0.3	1	0.3	0	0.0	4	1.3
2 to <5 years	0	0.0	1	0.2	0	0.0	0	0.0	0	0.0	1	0.2
5 to <9 years	0	0.0	0	0.0	0	0.0	0	0.0	0	0.0	0	0.0
9 to <18 years	0	0.0	1	0.1	0	0.0	0	0.0	0	0.0	1	0.1
18 to <65 years	0	0.0	8	0.1	1	<0.1	0	0.0	0	0.0	9	0.1
65 to <75 years	0	0.0	1	0.1	0	0.0	0	0.0	0	0.0	1	0.1
75+ years	0	0.0	2	0.3	0	0.0	1	0.2	0	0.0	3	0.5
Total	0	0.0	15	0.1	2	<0.1	2	<0.1	0	0.0	19	0.2

Table 5B: Cumulative Influenza cases (and age specific rates), by subtype, by age group, Edmonton Zone (Aug 29, 2010 – Jan 8, 2011)

	Flu A (Seasonal-H1)		Flu A (Seasonal-H3)		Flu A (Pandemic H1N1 2009)		Flu A (unresolved typing due to low viral load)		Flu B		Total	
	#	Rate (per 10,000)	#	Rate (per 10,000)	#	Rate (per 10,000)	#	Rate (per 10,000)	#	Rate (per 10,000)	#	Rate (per 10,000)
0 to <2 years	0	0.0	8	2.7	1	0.3	1	0.3	1	0.3	11	3.7
2 to <5 years	0	0.0	5	1.2	0	0.0	0	0.0	0	0.0	5	1.2
5 to <9 years	0	0.0	2	0.4	0	0.0	0	0.0	0	0.0	2	0.4
9 to <18 years	0	0.0	1	0.1	0	0.0	0	0.0	0	0.0	1	0.1
18 to <65 years	0	0.0	17	0.2	2	<0.1	0	0.0	0	0.0	19	0.3
65 to <75 years	0	0.0	4	0.6	0	0.0	0	0.0	0	0.0	4	0.6
75+ years	0	0.0	9	1.5	0	0.0	1	0.2	0	0.0	10	1.7
Total	0	0.0	46	0.4	3	<0.1	2	<0.1	1	<0.1	52	0.5

Source for tables 5A & 5B: Outbreak Response Toolkit (includes cases with positive respiratory specimens received on or before Jan 8, 2011).

Population data values used to calculate rates are for June 30, 2009 and are estimated using actual population values from the Alberta Health Care Insurance Plan (AHCIP) Registration File as of March 31, 2009.

For more information on data definitions and sources see [Annex: Data Notes section at the end of this report](#)

SURVEILLANCE AND HEALTH STATUS ASSESSMENT

Public Health Surveillance

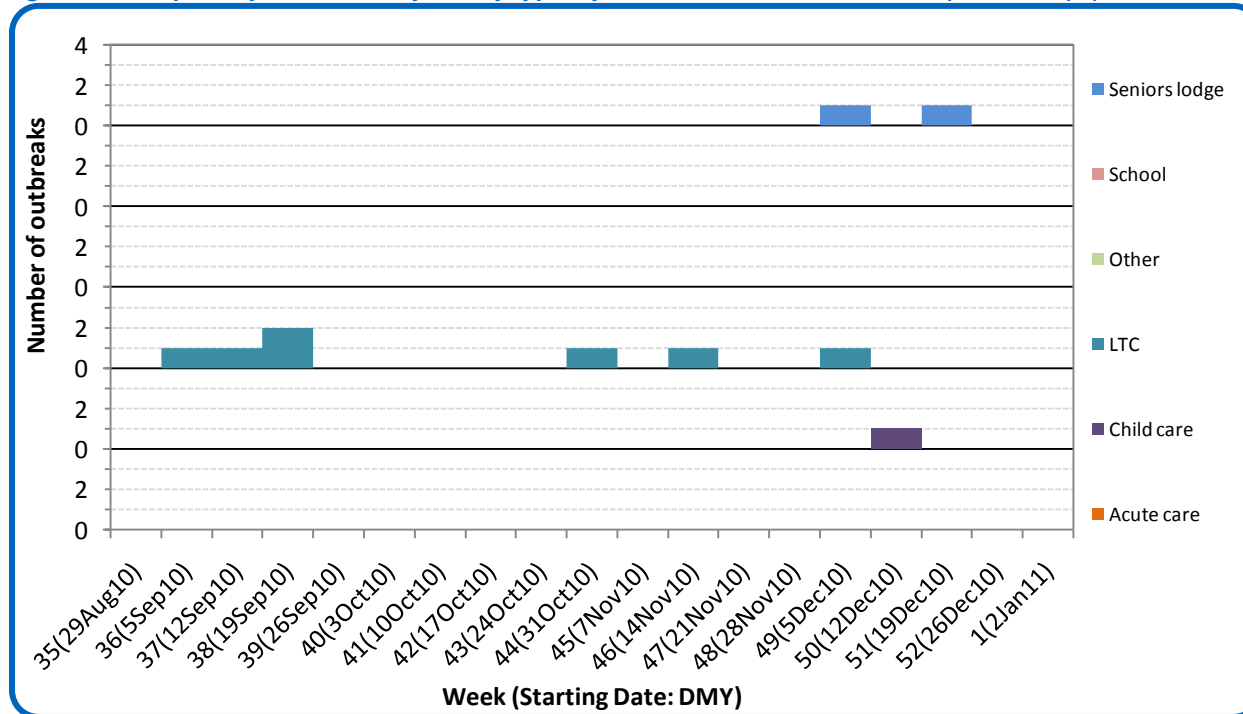
Report Date: January 11, 2011

An influenza report targeted to the general public is available at: <http://www.health.alberta.ca/health-info/influenza-evidence.html>

[Back to first page](#)

There were no laboratory confirmed respiratory outbreaks in Edmonton Zone reported for Week 1 (Jan 2 -8, 2011), however one outbreak in a daycare facility with an onset date of Dec 17, 2010 is currently pending laboratory confirmation.

Figure 5D: Respiratory outbreaks, by facility type, by onset week, Edmonton Zone (2010-2011); (school outbreaks may not have a laboratory confirmation)



Source: Alberta Outbreak Reporting Form as of 23:59 on Jan 8, 2011. LTC stands for long term care facility. For more information on data definitions and sources see [Annex: Data Notes section at the end of this report](#)

SURVEILLANCE AND HEALTH STATUS ASSESSMENT

Public Health Surveillance

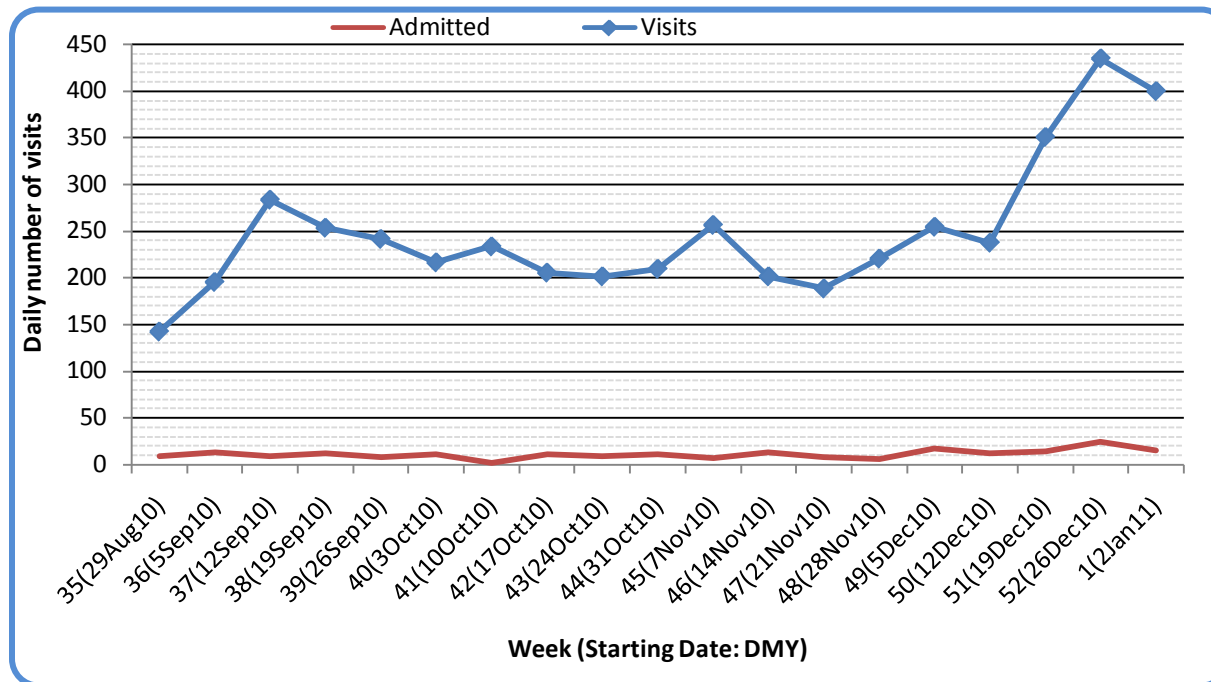
Report Date: January 11, 2011

An influenza report targeted to the general public is available at: <http://www.health.alberta.ca/health-info/influenza-evidence.html>

[Back to first page](#)

The number of visits to ED's, hospital admissions, and visits that left ED's without being seen for cough/congestion symptoms decreased by 8%, 28%, and 15%, respectively, in Week 1 (Jan 2-8, 2011) compared to Week 52 (Dec 26, 2010 – Jan 1, 2011) at nine emergency departments/urgent care centers in Edmonton Zone, maintaining the percentage of these visits at 5% of all visits.

Figure 5E: Visits to emergency departments/urgent care centers for cough/congestion and admissions to hospitals, Edmonton Zone, by visit week (2010-2011)



Source: Alberta Real Time Syndromic Surveillance (ARTSSN) as of 23:59 on Jan 8, 2011.
For more information on data definitions and sources see [Annex: Data Notes section at the end of this report](#)

SURVEILLANCE AND HEALTH STATUS ASSESSMENT

Public Health Surveillance
Report Date: January 11, 2011

An influenza report targeted to the general public is available at: <http://www.health.alberta.ca/health-info/influenza-evidence.html>

[Back to first page](#)

Attack rates in respiratory outbreaks

The outbreak in the Edmonton Zone daycare facility in Week 50 (Dec 12-18) currently pending laboratory confirmation had a preliminary attack rate of 18%.

Influenza-like illness visits and “Left Without Being seen”

The number of ILI-related visits and hospital admissions to emergency departments/urgent care centers decreased by 4% and 7%, respectively, in Week 1 (Jan 2-8, 2011) compared to Week 52 (Dec 26, 2010 – Jan 1, 2011). The number of ED visits by people with ILI symptoms who left ED’s without being seen, however, doubled from its Week 52 level.

Respiratory related calls to Health Link Alberta

The number of calls to Health Link Alberta by residents of Edmonton Zone for cough or breathing difficulties was 10% less in Week 1 (Jan 2 -8, 2011) compared to Week 52 (Dec 26, 2010 – Jan 1, 2011). This decreasing pattern is similar to that seen in ED visits for cough symptoms.

Percentage of visits to sentinel offices with influenza-like illness (ILI)

The percentage of ILI-related visits to sentinel physician offices by residents of Edmonton Zone in Week 52 (Dec 26, 2010 – Jan 1, 2011) was 0.5%. No ILI-related visits were reported for Week 51.

Percentage of visits to sentinel offices with lower respiratory tract infection (LRTI)

The percentage of LRTI-related visits to sentinel physician offices by residents of Edmonton Zone in Week 51 (Dec 19-25, 2010) and Week 52 (Dec 26, 2010 – Jan 1, 2011) were 63% and 57% higher, respectively, compared to Week 50. This indicator is the highest it has been this season.

The combined percentage of ILI- and LRTI-related visits to sentinel physician offices by residents of Edmonton Zone in Weeks 51 and 52 were 20% and 34% higher, respectively, compared to Week 50. This indicator is also the highest it has been this season and exhibits a trend that is consistent with the increased number of ED visits and Health Link Alberta calls for symptoms suggestive of influenza-like illness.

SURVEILLANCE AND HEALTH STATUS ASSESSMENT

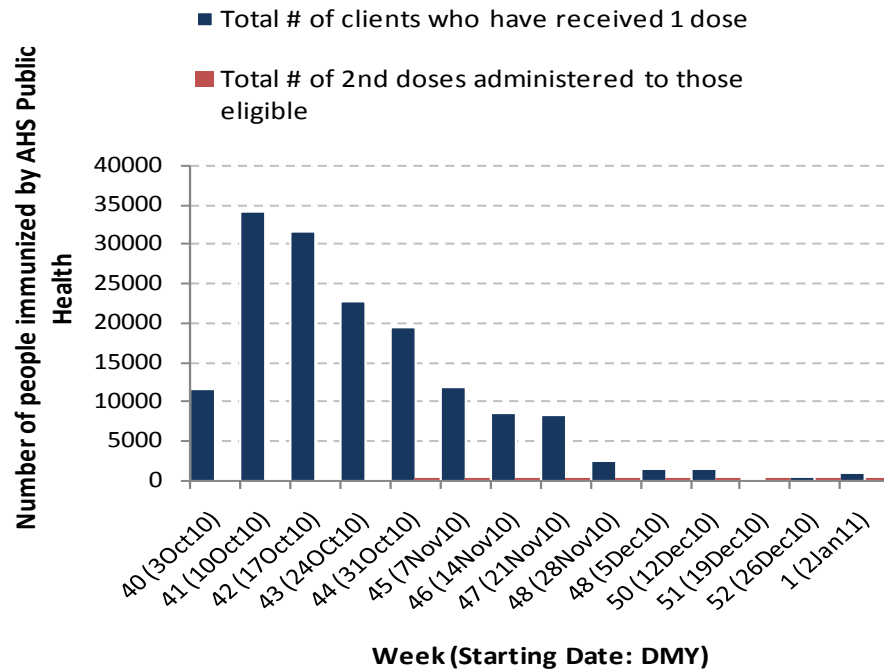
Public Health Surveillance

Report Date: January 11, 2011

An influenza report targeted to the general public is available at: <http://www.health.alberta.ca/health-info/influenza-evidence.html>

[Back to first page](#)

Figure 5F: Number Immunized by AHS (Public Health), by week, Edmonton Zone (2010-2011)



Source: AHS Zones (doses do not include those delivered by external providers)
 Note: Immunization coverage rates will be reported at the end of the influenza season
 For more information on data definitions and sources see [Annex: Data Notes section at the end of this report](#)

[Back to first page](#)

Table 5C: AHS (Public Health) Delivered Influenza Immunizations (with Cumulative totals), by priority group, Edmonton Zone (2010-2011)

Priority Group	Number Immunized (Week 1 – Jan 2-Jan 8, 2011)	Cumulative Number Immunized (since Oct 3, 2010)
Long term care staff	4	317
Health care workers	22	4,680
Pregnant women	18	1,332
Residents of long term care	0	1,030
65 years of age and over	95	47,944
All children 6 months up to and including 23 months*	Dose #1	5,547
	Dose #2	1,393
All children 24 months up to and including 59 months*	Dose #1	6,738
	Dose #2	283
High risk: 5 years up to and including 8 years*	Dose #1	1,257
	Dose #2	30
High risk: 9 years up to and including 64 years	86	16,700
Healthy: 5 years up to and including 8 years*	Dose #1	5,153
	Dose #2	130
Healthy: 9 years up to and including 64 years	398	65,028
Total number of clients who have received 1 dose	935	155,726
Total number of 2nd doses administered to those eligible*	233	1,836

Source: AHS Zones (doses do not include those delivered by external providers)

*Children under 9 years of age who have not received at least one dose of seasonal influenza vaccine in past years require two doses, given at least four weeks apart.

Note: Immunization coverage rates will be reported at the end of the influenza season

For more information on data definitions and sources see [Annex: Data Notes section at the end of this report](#)

SURVEILLANCE AND HEALTH STATUS ASSESSMENT

Public Health Surveillance

Report Date: January 11, 2011

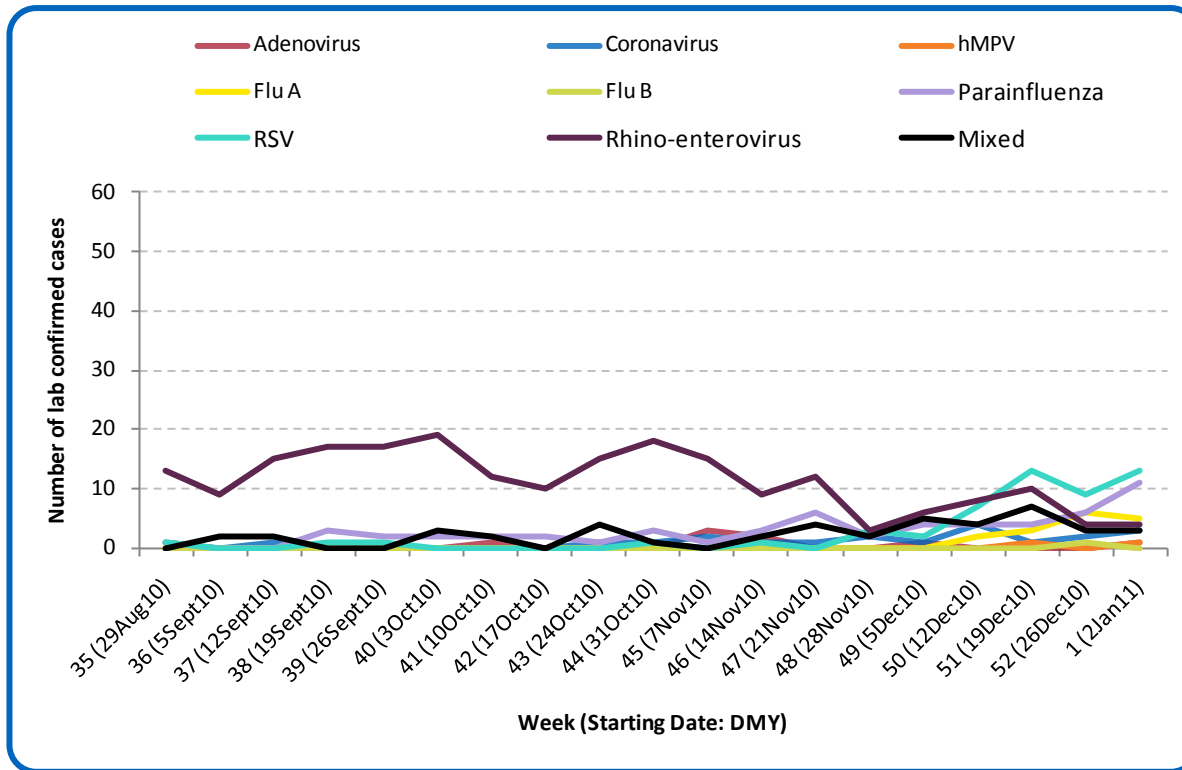
An influenza report targeted to the general public is available at: <http://www.health.alberta.ca/health-info/influenza-evidence.html>

SECTION 6: ZONE 5 – NORTH

[Back to first page](#)

The number of laboratory confirmed RSV and parainfluenza cases continues on an increasing trend in North Zone. The total number of confirmed influenza cases in North Zone this season is 17; including 13 cases of influenza A (H3), three cases of influenza A (H1N1) 2009, and one case of influenza type B.

Figure 6A: Laboratory confirmed respiratory virus cases, by virus type, by week, North Zone (2010-2011)



Sources: DIAL – Provincial Laboratory and the Outbreak Response Toolkit (includes cases with positive respiratory specimens received on or before Jan 8, 2011). For more information on data definitions and sources see [Annex: Data Notes section at the end of this report](#)

SURVEILLANCE AND HEALTH STATUS ASSESSMENT

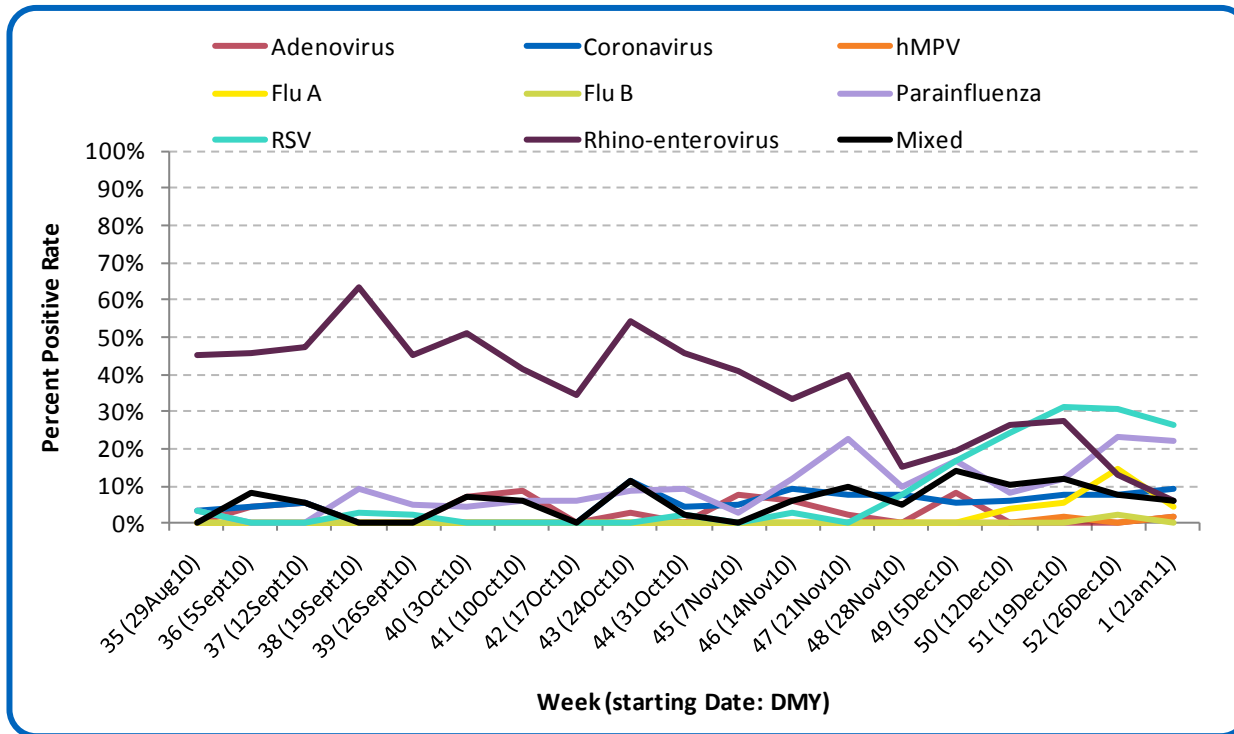
Public Health Surveillance

Report Date: January 11, 2011

An influenza report targeted to the general public is available at: <http://www.health.alberta.ca/health-info/influenza-evidence.html>

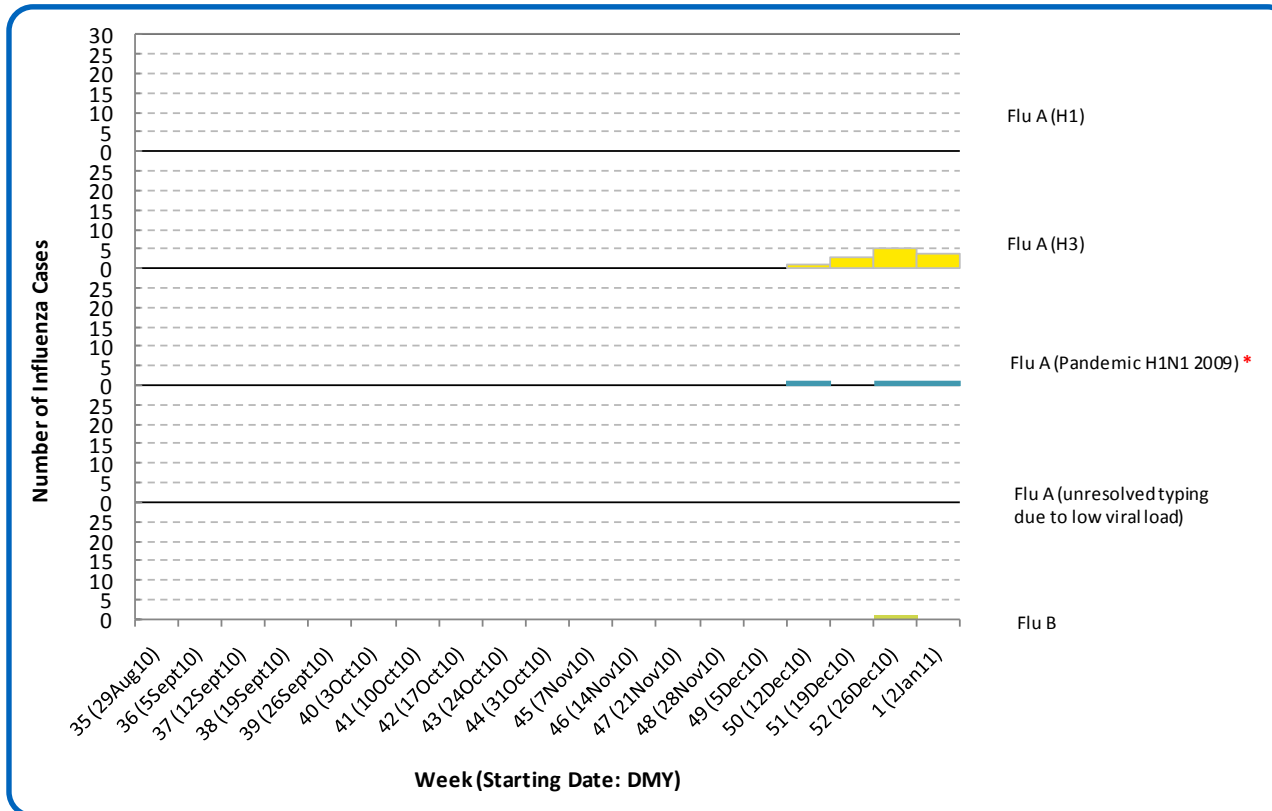
[Back to first page](#)

Figure 6B: Respiratory Specimen Percent Positive Rates, by virus type, by week, North Zone (2010-2011)



Source: DIAL – Provincial Laboratory (includes cases with positive respiratory specimens received on or before Jan 8, 2011)
For more information on data definitions and sources see [Annex: Data Notes section at the end of this report](#)

Figure 6C: Laboratory confirmed Influenza cases, by subtype, by week specimen received, North Zone (2010-2011)



*Note: Two specimen received were positive for both RSV and influenza A (H1N1) 2009.

Source: Outbreak Response Toolkit (includes cases with positive respiratory specimens received on or before Jan 8, 2011).

For more information on data definitions and sources see [Annex: Data Notes section at the end of this report](#)

SURVEILLANCE AND HEALTH STATUS ASSESSMENT

Public Health Surveillance

Report Date: January 11, 2011

An influenza report targeted to the general public is available at: <http://www.health.alberta.ca/health-info/influenza-evidence.html>

[Back to first page](#)

Table 6A: New Influenza cases (and age specific rates), by subtype, by age group, Edmonton Zone (Week 1: Jan 2-8, 2011)

	Flu A (Seasonal-H1)		Flu A (Seasonal-H3)		Flu A (Pandemic H1N1 2009)		Flu A (unresolved typing due to low viral load)			Flu B		Total
	#	Rate (per 10,000)	#	Rate (per 10,000)	#	Rate (per 10,000)	#	Rate (per 10,000)	#	Rate (per 10,000)	#	Rate (per 10,000)
0 to <2 years	0	0.0	1	0.7	1	0.7	0	0.0	0	0.0	2	1.4
2 to <5 years	0	0.0	0	0.0	0	0.0	0	0.0	0	0.0	0	0.0
5 to <9 years	0	0.0	0	0.0	0	0.0	0	0.0	0	0.0	0	0.0
9 to <18 years	0	0.0	0	0.0	0	0.0	0	0.0	0	0.0	0	0.0
18 to <65 years	0	0.0	3	0.1	0	0.0	0	0.0	0	0.0	3	0.1
65 to <75 years	0	0.0	0	0.0	0	0.0	0	0.0	0	0.0	0	0.0
75+ years	0	0.0	0	0.0	0	0.0	0	0.0	0	0.0	0	0.0
Total	0	0.0	4	0.1	1	0.0	0	0.0	0	0.0	5	0.1

Table 6B: Cumulative Influenza cases (and age specific rates), by subtype, by age group, Edmonton Zone (Aug 29, 2010-Jan 8, 2011)

	Flu A (Seasonal-H1)		Flu A (Seasonal-H3)		Flu A (Pandemic H1N1 2009)		Flu A (unresolved typing due to low viral load)			Flu B		Total
	#	Rate (per 10,000)	#	Rate (per 10,000)	#	Rate (per 10,000)	#	Rate (per 10,000)	#	Rate (per 10,000)	#	Rate (per 10,000)
0 to <2 years	0	0.0	3	2.2	2	1.4	0	0.0	0	0.0	5	3.6
2 to <5 years	0	0.0	0	0.0	0	0.0	0	0.0	1	0.5	1	0.5
5 to <9 years	0	0.0	1	0.4	0	0.0	0	0.0	0	0.0	1	0.4
9 to <18 years	0	0.0	2	0.4	0	0.0	0	0.0	0	0.0	2	0.4
18 to <65 years	0	0.0	6	0.2	1	<0.1	0	0.0	0	0.0	7	0.3
65 to <75 years	0	0.0	0	0.0	0	0.0	0	0.0	0	0.0	0	0.0
75+ years	0	0.0	1	0.6	0	0.0	0	0.0	0	0.0	1	0.6
Total	0	0.0	13	0.3	3	0.1	0	0.0	1	0.0	17	0.4

Source for Tables 6A & 6B: Outbreak Response Toolkit (includes cases with positive respiratory specimens received on or before Jan 8, 2011).

Population data values used to calculate rates are for June 30, 2009 and are estimated using actual population values from the Alberta Health Care Insurance Plan (AHCIP) Registration File as of March 31, 2009.

For more information on data definitions and sources see [Annex: Data Notes section at the end of this report](#)

SURVEILLANCE AND HEALTH STATUS ASSESSMENT

Public Health Surveillance

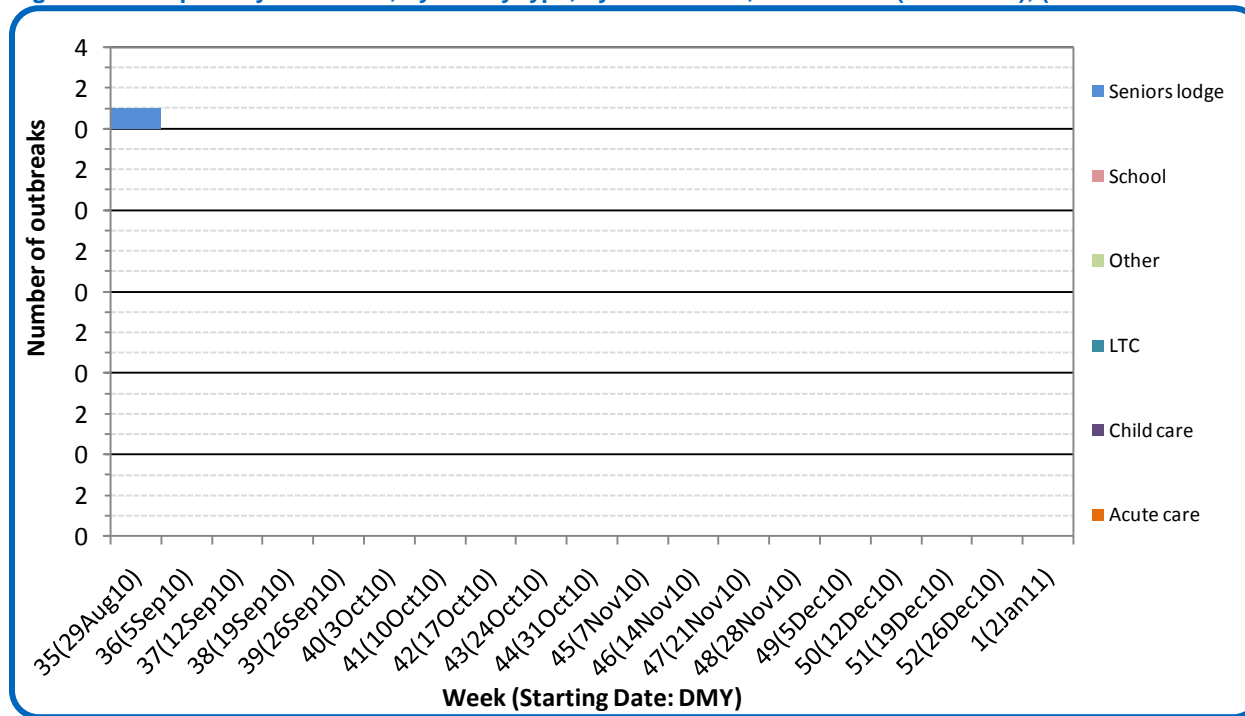
Report Date: January 11, 2011

An influenza report targeted to the general public is available at: <http://www.health.alberta.ca/health-info/influenza-evidence.html>

[Back to first page](#)

There have been no laboratory confirmed respiratory outbreaks reported in North Zone since the week of Aug 29, 2010.

Figure 6D: Respiratory outbreaks, by facility type, by onset week, North Zone (2010-2011); (school outbreaks may not have a laboratory confirmation)



Source: Alberta Outbreak Reporting Form as of 23:59 on Jan 8, 2011. LTC stands for long term care facility. For more information on data definitions and sources see [Annex: Data Notes section at the end of this report](#)

SURVEILLANCE AND HEALTH STATUS ASSESSMENT

Public Health Surveillance

Report Date: January 11, 2011

An influenza report targeted to the general public is available at: <http://www.health.alberta.ca/health-info/influenza-evidence.html>

[Back to first page](#)

Attack rates in respiratory outbreaks

There have been no reports of respiratory outbreaks from the North Zone since the week of Aug 29, 2010.

Influenza-like illness visits and “Left Without Being seen”

There are no data available for the North Zone.

Respiratory related calls to Health Link

The number of calls to Health Link Alberta by residents of North Zone for cough or breathing difficulties was 9% higher in Week 1 (Jan 2- 8, 2011) compared to Week 52 (Dec 26, 2010 – Jan 1, 2011). Overall, the pattern remains similar to the one seen in recent weeks.

Percentage of visits to sentinel offices with Influenza-like illness

There were no reports of ILI-related visits to sentinel physician offices by residents of North Zone in Weeks 51 (Dec 19- 25) and 52 (Dec 26, 2010–Jan 1, 2011).

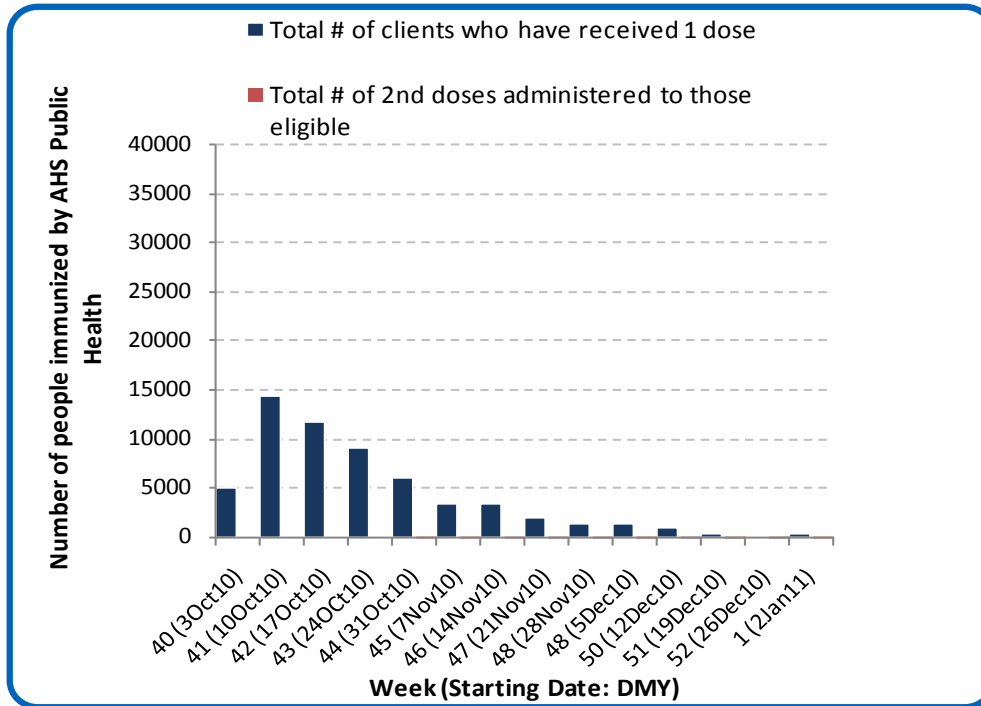
Percentage of visits to sentinel offices with lower respiratory tract infection

The percentages of LRTI-related visits to sentinel physician offices by residents of North Zone in Weeks 51 (Dec 19- 25) and 52 (Dec 26, 2010 – Jan 1, 2011) were 4X and 6X higher, respectively, compared to Week 50 (Dec 12 - 18). This indicator is the highest it has been this season.

The combined percentage of ILI- and LRTI-related visits to sentinel physician offices by residents of North Zone in Week 52 was comparable to that in Week 50.

[Back to first page](#)

Figure 6E: Number Immunized by AHS (Public Health), by week, North Zone (2010-2011)



Source: AHS Zones (doses do not include those delivered by external providers)
 Note: Immunization coverage rates will be reported at the end of the influenza season
 For more information on data definitions and sources see [Annex: Data Notes section at the end of this report](#)

SURVEILLANCE AND HEALTH STATUS ASSESSMENT

Public Health Surveillance

Report Date: January 11, 2011

An influenza report targeted to the general public is available at: <http://www.health.alberta.ca/health-info/influenza-evidence.html>

[Back to first page](#)

Table 6C: AHS (Public Health) Delivered Influenza Immunizations (with Cumulative totals), by priority group, North Zone (2010-2011)

Priority Group	Number Immunized (Week 1 – Jan 2-Jan 8, 2011)	Cumulative Number Immunized (since Oct 3, 2010)
Long term care staff	6	801
Health care workers	15	4,595
Pregnant women	9	529
Residents of long term care	1	1,245
65 years of age and over	52	15,508
All children 6 months up to and including 23 months*	Dose #1	2,014
	Dose #2	541
All children 24 months up to and including 59 months*	Dose #1	2,394
	Dose #2	92
High risk: 5 years up to and including 8 years*	Dose #1	893
	Dose #2	10
High risk: 9 years up to and including 64 years	39	7,522
Healthy: 5 years up to and including 8 years*	Dose #1	2,301
	Dose #2	49
Healthy: 9 years up to and including 64 years	145	22,273
Total number of clients who have received 1 dose	410	60,075
Total number of 2nd doses administered to those eligible*	57	692

Source: AHS Zones (doses do not include those delivered by external providers)

*Children under 9 years of age who have not received at least one dose of seasonal influenza vaccine in past years require two doses, given at least four weeks apart.

Note: Immunization coverage rates will be reported at the end of the influenza season

For more information on data definitions and sources see [Annex: Data Notes section at the end of this report](#)

SURVEILLANCE AND HEALTH STATUS ASSESSMENT

Public Health Surveillance

Report Date: January 11, 2011

An influenza report targeted to the general public is available at: <http://www.health.alberta.ca/health-info/influenza-evidence.html>

ANNEX: DATA NOTES

[Back to first page](#)

LABORATORY

Information on laboratory confirmed respiratory virus activity in Alberta is based on data from 2 sources:

- 1) Non-influenza viruses: The Alberta Provincial Public Health Laboratory DIAL system (Data Integration for Alberta Laboratories) – a specimen based system. Cases are determined by rationalizing samples from the same patient with the same virus identified within a 30-day period. The information (i.e. received date) from the first sample identifying the identical virus is used in this report.
- 2) Influenza viruses: The Alberta influenza Case Management System – an influenza case based system.

Both data sources are web-based applications supported by the Canadian Network for Public Health Intelligence.

The data in this report are based on specimens obtained from residents of Alberta; according to the date the specimen was received by the laboratory.

Definition for “mixed” – a single sample where multiple viral organisms were isolated.

INFLUENZA-LIKE ILLNESS

Four data sources are used to provide information on utilization of primary and acute care services by people with Influenza-Like Illness (ILI). *Caution: Each source uses potentially different definitions of ILI.*

1. Primary care summaries are obtained from the TARRANT system. Patients seen by TARRANT physicians may not be representative of the general population. Reported ILI cases represent people seen by TARRANT physicians, according to the date seen by the physician. The percentage of ILI represents the proportion of patients with ILI of all patients seen by the physician.
2. In addition to reporting visits of patients with ILI, TARRANT physicians also report visits with lower respiratory tract infections (LRTI). Each visit is recorded only once, even if a patient has symptoms consistent with ILI and LRTI. The combined ILI- and LRTI-related visits are therefore suggestive of overall respiratory infections in the patient population.
3. Information on visits for ILI in Emergency Departments (ED) and urgent care centers are provided by the Alberta Real Time Syndromic Surveillance Net (ARTSSN) data repository. ILI designation is based on patients being screened in emergency departments with an ILI screening tool. The primary purpose of the ILI screening tool is to implement appropriate infection control measures. The original data sources fed to the ARTSSN data repository are EDIS (Emergency Department Information System) for the Edmonton Zone and REDIS for the Calgary Zone.
4. Health Link Alberta is a 24 hour a day, 7 day a week nurse telephone advice and health information service that provides the public with advice and information about health symptoms and concerns. The original data source for the daily calls to Health Link Alberta for ILI, cough, and breathing difficulties is the Health Link database called Sharp Focus.

SURVEILLANCE AND HEALTH STATUS ASSESSMENT

Public Health Surveillance

Report Date: January 11, 2011

An influenza report targeted to the general public is available at: <http://www.health.alberta.ca/health-info/influenza-evidence.html>

OUTBREAKS

[Back to first page](#)

Upon notification of an outbreak, the *Alberta Health & Wellness/Alberta Health Services* Outbreak Reporting Form (Fillable PDF) is completed by Zone Public Health investigators and sent to *Alberta Health & Wellness and AHS Public Health Surveillance*. The form includes information about the type and location of the outbreak, type of facility, and the causative organism (confirmed or suspected). There may be a delay between the reporting of an outbreak and the identification of the organism. This report includes only those outbreaks that are laboratory confirmed and caused by influenza-like illness viruses; outbreaks that are caused by bacteria (i.e. pertussis, invasive pneumococcal disease) and other types of viruses (i.e. measles, rubella (German measles), chickenpox) are excluded. Also excluded are those outbreaks that have no causative agent identified by the Provincial Laboratory for Public Health or where specimens are not tested or an outbreak with only one infected (confirmed or probable) case during a 7 day period. This follows the same approach of PHAC FluWatch for defining ILI/influenza outbreak. The naming convention of outbreak facilities by FluWatch - "Hospital and residential institutions" - is also adopted. Outbreaks in schools are officially counted in tables or graphs whether there is or not a laboratory confirmation; outbreaks in hospital and residential institutions that are pending for laboratory confirmation are described for information only but not officially presented in graphs or tables in this report.

INFLUENZA IMMUNIZATIONS

Influenza immunization data are reported by AHS zones. Numbers are available to the Public Health Surveillance team at the beginning of the week for the doses administered the previous week (Sunday to Saturday). It includes those doses administered by AHS (Public Health) only. Clients can only exist in one priority group. Immunization coverage rates will be reported at the end of March, 2011.

POPULATION NUMBERS

Population data values used to calculate rates are for June 30, 2009 and are estimated using actual population values from the Alberta Health Care Insurance Plan (AHCIP) Registration File as of March 31, 2009. The following registrants are included: residents of Alberta; 'residents' of Alberta temporarily living elsewhere, such as extended visits or vacations or students attending an educational institute outside of Alberta, or Albertans temporarily (up to four years) working outside Alberta; persons during the first three months after they move from Alberta to another Canadian province; dependants of members of the RCMP and Armed Forces; persons from another country who are working or studying in Alberta on valid visas; and Natives/Aboriginals whose premiums are paid by Health Canada, First Nations and Inuit Health Branch. Not included are: members of the Armed Forces and RCMP; inmates at federal penitentiaries; persons from other provinces during their first three months in Alberta; and persons who have not registered for eligibility, or have opted out.

Slight differences between values provided at this level of aggregation and data provided at other levels of aggregation may occur because of round-off error. Population values are subject to change without notice when new source data is received.

SURVEILLANCE AND HEALTH STATUS ASSESSMENT

Public Health Surveillance

Report Date: January 11, 2011

An influenza report targeted to the general public is available at: <http://www.health.alberta.ca/health-info/influenza-evidence.html>