

## Weekly Report

February 8, 2011

The purpose of this report is to inform Public Health staff, primary care providers, acute care staff and other community practitioners about recent respiratory virus activity in the province of Alberta. Unless otherwise noted, all data presented are current as of the Saturday prior to the day the report is released.

To navigate to certain sections of the report or to visit other relevant websites, use the Quick Links below

[Alberta Snapshot](#)

[Section 1: Alberta](#)

[Section 2: Zone 1 - South](#)

[Section 3: Zone 2 - Calgary](#)

[Section 4: Zone 3 - Central](#)

[Section 5: Zone 4 - Edmonton](#)

[Section 6: Zone 5 - North](#)

[Annex: Data Notes](#)

[Current Global Information](#)

[FluWatch \(PHAC\)](#)

[FluView \(US CDC\)](#)

[HPA \(UK\)](#)

[WHO](#)

[Travel Advisories](#)

### What's New?

- Increasing influenza-like-illness (ILI) trends are being observed in Central, Eastern and Southern European countries while countries in Western Europe are seeing declining trends. Influenza A H1N1 2009 continues to be the predominant strain in this area of the world. The number of new admissions requiring hospital care is generally dropping. Most of the severely ill are in the age group 15-64 years. Since the beginning of the season, among the countries reporting antiviral resistance data (Italy, Norway and the UK), 3.6% percent of H1N1 2009 viruses tested have been found to be resistant to the antiviral drug oseltamivir (all of the resistant viruses carried the H275Y mutation). Also, a recent article published in the *Journal Eurosurveillance* states that confirmed cases of oseltamivir-resistant influenza A H1N1 2009 have been detected in community settings, in patients with no known exposure to oseltamivir, suggesting a possible onward transmission of resistant strains and indicating a possible change in the epidemiology of oseltamivir-resistant influenza A H1N1 2009 virus.
- Influenza transmission in several countries of North Africa and the Middle East appear to have peaked, although data from some countries suggest activity is still increasing. Influenza A H1N1 2009, and to a lesser extent, influenza type B have been the predominant viruses reported in these areas. In the temperate areas of Asia, including Mongolia, northern China, the Republic of Korea and Japan, influenza transmission has recently peaked and is now declining. Influenza A H3N2 was the predominant virus in Mongolia and northern China earlier in the season, however it appears to have peaked around the 3<sup>rd</sup> week of December at which time higher numbers of influenza A H1N1 2009 began to be detected. Although the peak of transmission in the Republic of Korea coincided with that seen in northern China, over 90% of the influenza viruses detected were H1N1 2009.
- As of the end of January, influenza activity in the US was still increasing. The proportion of outpatient visits for ILI remained above the national baseline level. Influenza A H3N2 is still the predominant strain, with influenza A H1N1 and type B circulating to a lesser extent. Of note, 7% of the influenza type B viruses have been identified as belonging to the Yamagata lineage, which is not a component of the 2010-2011 influenza vaccine.
- With the exception of the Atlantic provinces, the percentage of positive influenza detections appears to have peaked at the end of January in most areas across Canada. Other indicators of influenza activity either decreased or remained similar to prior weeks. RSV activity is also increasing across Canada.
- In Alberta, RSV continues to be the predominant virus circulating. The number of influenza cases confirmed last week was fairly consistent with previous weeks, however the proportion of influenza B cases detected has been steadily increasing for the past 4 weeks. Two respiratory outbreaks previously reported in an Edmonton Zone child care facility and a Calgary Zone long term care facility have now been confirmed and attributed to RSV and influenza A (H3), respectively. In addition, four new respiratory outbreaks have been reported, including two in Calgary Zone, one in Central Zone and one in Edmonton Zone. All occurred in long term care facilities and are pending laboratory confirmation.

If you have questions about the Alberta Respiratory Virus Surveillance Update, or any of the indicators, please contact:  
[AHSPublicHealthSurveillance@albertahealthservices.ca](mailto:AHSPublicHealthSurveillance@albertahealthservices.ca) Or phone: 780-342-0210

## Alberta Snapshot

[Back to first page](#)

Indicators			Cumulative Counts					Alberta
			Week 35 (starting Aug 29/10) to week 5 (starting Jan 30/11)					
			South	Calgary	Central	Edmonton	North	
Laboratory Confirmed Cases	Number of cases with a positive respiratory specimen <sup>1</sup>	Adenovirus	4	29	8	48	14	103
		Coronavirus	5	43	21	77	26	172
		Human metapneumovirus (hMPV)	8	4	0	3	5	20
		Influenza A	19	117	42	130	40	348
		Influenza B	9	21	3	12	3	48
		Parainfluenza	23	59	37	128	73	320
		Respiratory syncytial virus (RSV)	56	287	87	445	148	1023
		Rhino enterovirus	80	380	144	505	238	1347
		Mixed	20	94	27	92	60	293
		Total		224	1034	369	1440	607
Outbreaks	# laboratory confirmed respiratory outbreaks <sup>2</sup>	0	12	4	20	1	37	
Influenza Immunizations	Total number of clients who have received 1 dose administered by AHS Public Health <sup>3</sup> (cumulative since Oct 3, 2010)	42,794	187,795	60,995	160,166	61,915	513,665	

-- Information not available

\*Note: 13 specimens were positive for influenza A or B and one or more other virus type(s). These cases have been included in the influenza counts, as well as the other respective specimen type(s). They have not been included in the 'Mixed' category. One specimen was positive for both influenza A & B.

<sup>1</sup> Sources: DIAL – Provincial Laboratory and the Outbreak Response Toolkit (includes cases with positive respiratory specimens received on or before Feb 5, 2011).

<sup>2</sup> Source: Alberta Health and Wellness Outbreak Reporting Form (Fillable PDF) from All Zones

<sup>3</sup>Source: AHS Zones (number does not include doses provided by external providers); includes first doses only for those that require two doses

For more information on data definitions and sources see [Annex: Data Notes section at the end of this report](#)

## SURVEILLANCE AND HEALTH STATUS ASSESSMENT

### Public Health Surveillance

Report Date: February 8, 2011

An influenza report targeted to the general public is available at: <http://www.health.alberta.ca/health-info/influenza-evidence.html>

## SECTION 1: ALBERTA

[Back to first page](#)

### Summary

Overall, measures of respiratory virus activity in Alberta have increased or remained steady over the last few weeks. RSV and, to a lesser extent, influenza appear to be the predominant viruses circulating. The proportion of influenza B (of all influenza viruses) cases continues to increase.

### Laboratory Data (see [Figure 1A](#), [Figure 1B](#) & [Figure 1C](#), [Table 1A](#) & [Table 1B](#))

In Alberta, RSV continues to be the predominant virus circulating. The number of influenza cases confirmed last week was fairly consistent with previous weeks, however the proportion of influenza B cases has gone from 5% to almost 30% in the past 4 weeks. As of the end of last week (Feb 5, 2011), the total number of confirmed cases of influenza in the province this season is 396 (66.9% influenza A (H3), 18.4% influenza A (H1N1) 2009, 12.1% influenza type B, and 2.5% influenza A with unresolved sub-typing). At this point in the season, the age specific rate for confirmed influenza cases (all types) in infants 0 to <2 years of age is higher than the rate in other age groups, at 5.9 per 10,000.

### Outbreaks (see [Figure 1D](#))

In Alberta, two respiratory outbreaks that occurred in the middle of January and were reported in the last report have been confirmed: one in an Edmonton Zone childcare facility with a preliminary attack rate of 5% attributed to RSV, and one in a Calgary Zone long term care facility with an attack rate of 26% attributed to influenza A (H3). In addition, four new respiratory outbreaks have been reported, all from long term care facilities and pending laboratory confirmation. Two were in Calgary Zone (one in Week 5 and one in Week 4), one was in Central Zone and one was in Edmonton Zone. The latter two occurred in Week 5 (Jan 30 – Feb 5, 2011).

### Health Link Alberta Calls (see [Figure 1E](#))

In Alberta, the number of calls to Health Link Alberta for cough or breathing difficulties was 10% higher in Week 5 (Jan 30 – Feb 5, 2011) compared to Week 4. Calls to Health Link Alberta for these symptoms peaked the last week of December and started to decline, however the number of calls started to increase again mid-January.

### Emergency Department/Urgent Care Center Visits and Hospital Admissions

The combined number of visits to the emergency departments/urgent care centers (ED's) for influenza-like illness (ILI) in the City of Calgary and Edmonton Zone remained unchanged in Week 5 (Jan 30–Feb 5, 2011) compared to the previous week, at 6% of all screened visits. The number of admissions to hospitals exhibited the same trend.

In contrast, the number of visits and the number of admissions to hospitals for cough declined by 6% and 8% respectively in Week 5 from the previous week.

### Sentinel Physician Office Visits

The combined percentage of ILI and LRTI related visits was 85% higher in Week 4 (Jan 23-29, 2011) compared to Week 3 and was the highest it has been this season.

## SURVEILLANCE AND HEALTH STATUS ASSESSMENT

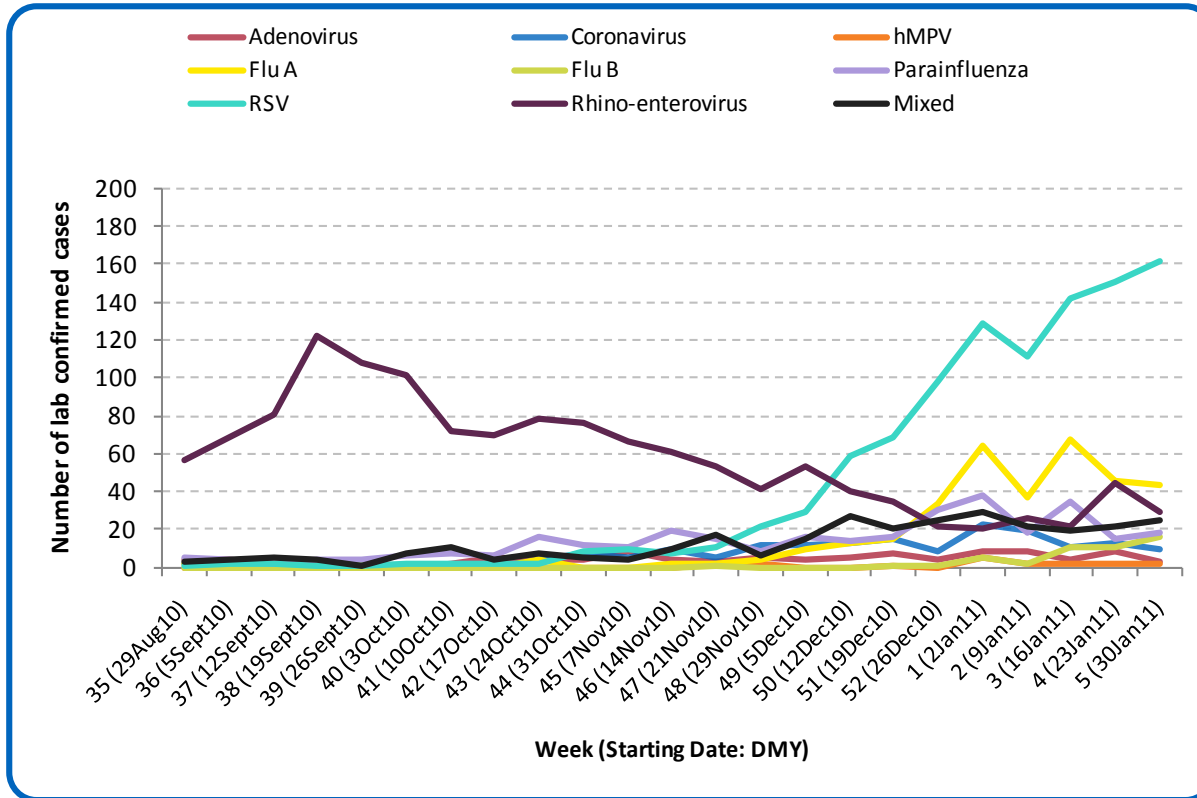
### Public Health Surveillance

Report Date: February 8, 2011

An influenza report targeted to the general public is available at: <http://www.health.alberta.ca/health-info/influenza-evidence.html>

[Back to start of section](#)

Figure 1A: Laboratory confirmed respiratory virus cases, by virus type, by week, Alberta (2010-11)



Sources: DIAL – Provincial Laboratory and the Outbreak Response Toolkit (includes cases with positive respiratory specimens received on or before Feb 5, 2011). For more information on data definitions and sources see [Annex: Data Notes section at the end of this report](#)

SURVEILLANCE AND HEALTH STATUS ASSESSMENT

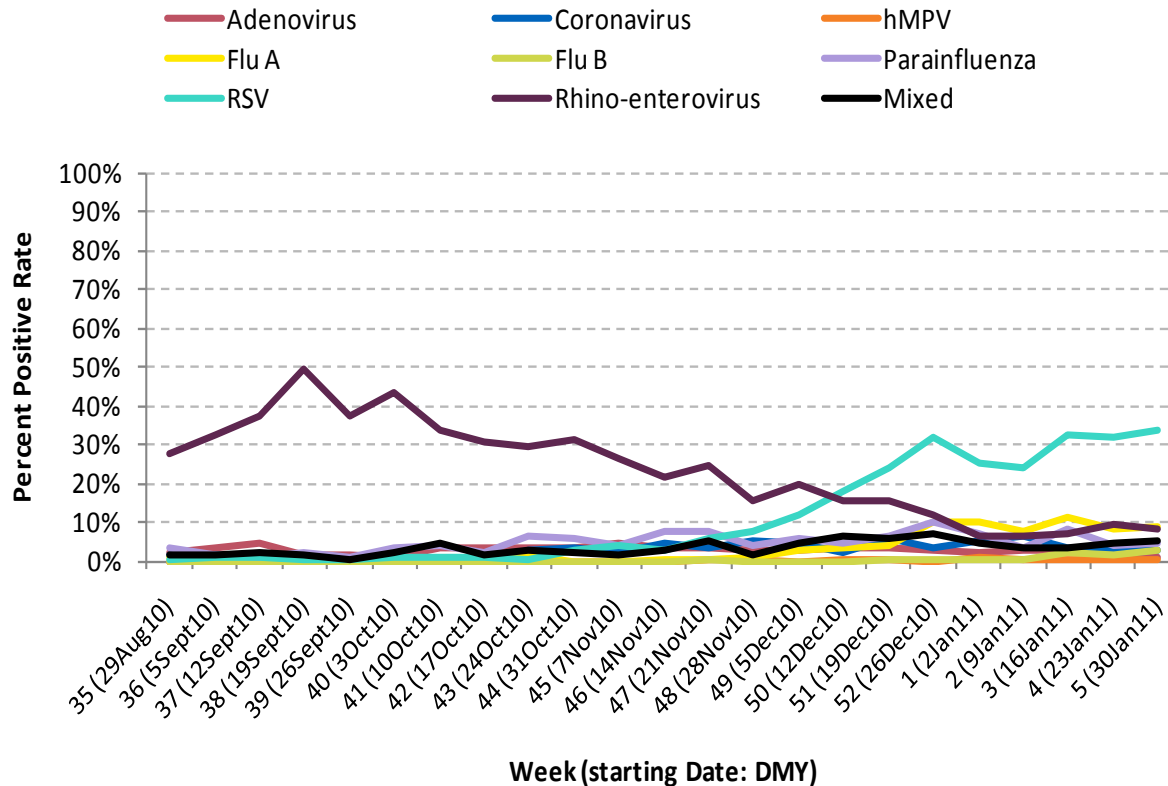
Public Health Surveillance

Report Date: February 8, 2011

An influenza report targeted to the general public is available at: <http://www.health.alberta.ca/health-info/influenza-evidence.html>

[Back to start of section](#)

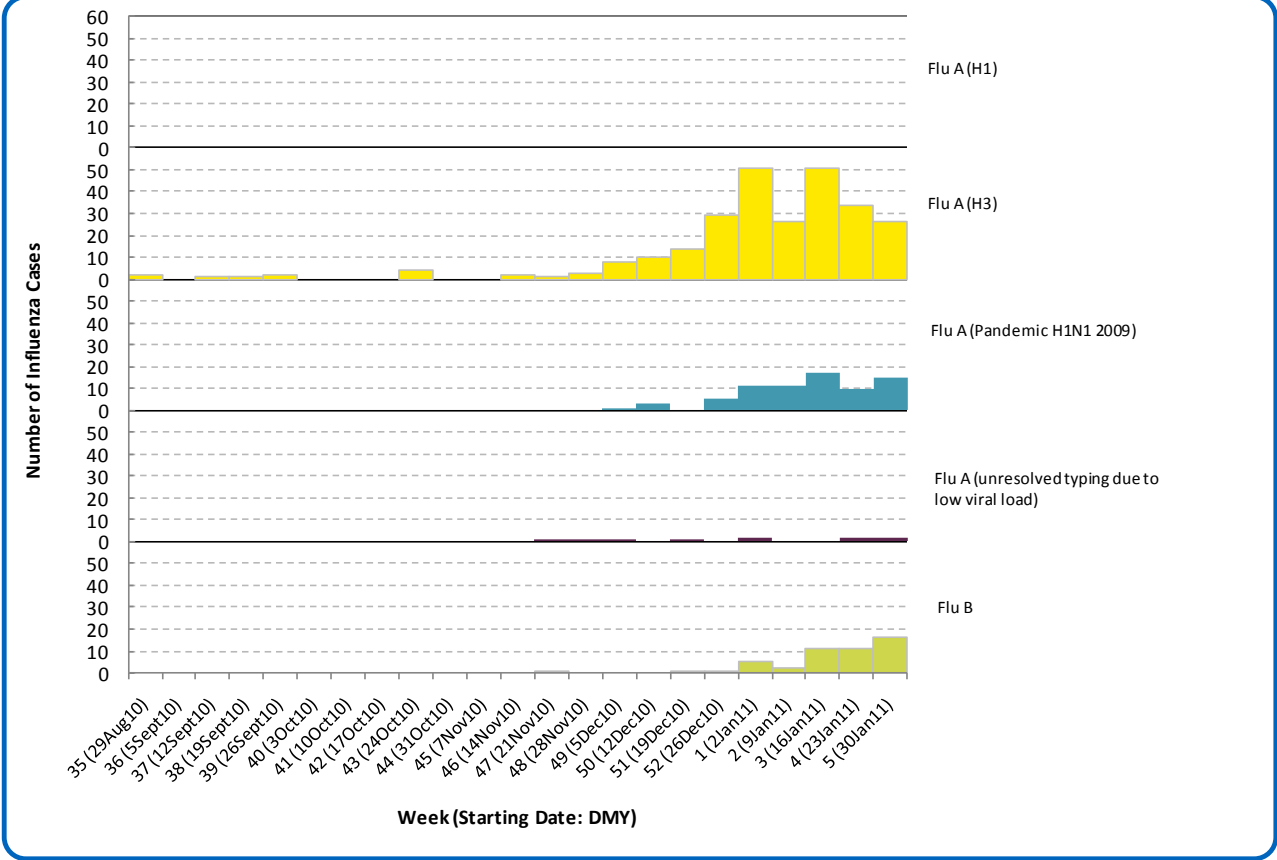
Figure 1B: Respiratory Specimen Percent Positive Rates, by virus type, by week, Alberta (2010-11)



Sources: DIAL – Provincial Laboratory (includes cases with positive respiratory specimens received on or before Feb 5, 2011). For more information on data definitions and sources see [Annex: Data Notes section at the end of this report](#)

[Back to start of section](#)

Figure 1C: Laboratory confirmed Influenza cases, by subtype, by week specimen received, Alberta (2010-2011)



\*Note: 13 specimens were positive for influenza A or B and one or more other virus type(s). These cases have been included in the influenza counts, as well as the other respective specimen type(s). They have not been included in the 'Mixed' category. One specimen was positive for both influenza A & B.

Source: Outbreak Response Toolkit (includes cases with positive respiratory specimens received on or before Feb 5, 2011).

For more information on data definitions and sources see [Annex: Data Notes section at the end of this report](#)

**SURVEILLANCE AND HEALTH STATUS ASSESSMENT**

**Public Health Surveillance**

Report Date: February 8, 2011

An influenza report targeted to the general public is available at: <http://www.health.alberta.ca/health-info/influenza-evidence.html>

[Back to start of section](#)

**Table 1A: New Influenza cases (and age specific rates), by subtype, by age group, Alberta (Week 5: Jan 30-Feb 5, 2011)**

	Flu A (Seasonal-H1)		Flu A (Seasonal-H3)		Flu A (Pandemic H1N1 2009)		Flu A (unresolved typing due to low viral load)		Flu B		Total	
	#	Rate (per 10,000)	#	Rate (per 10,000)	#	Rate (per 10,000)	#	Rate (per 10,000)	#	Rate (per 10,000)	#	Rate (per 10,000)
0 to <2 years	0	0.0	7	0.7	2	0.2	0	0.0	1	0.1	10	1.0
2 to <5 years	0	0.0	4	0.3	0	0.0	1	0.1	2	0.1	7	0.5
5 to <9 years	0	0.0	2	0.1	2	0.1	0	0.0	4	0.2	8	0.5
9 to <18 years	0	0.0	0	0.0	0	0.0	0	0.0	3	0.1	3	0.1
18 to <65 years	0	0.0	9	<0.1	11	<0.1	1	<0.1	5	<0.1	26	0.1
65 to <75 years	0	0.0	0	0.0	0	0.0	0	0.0	0	0.0	0	0.0
75+ years	0	0.0	4	0.2	0	0.0	0	0.0	1	0.1	5	0.3
<b>Total</b>	<b>0</b>	<b>0.0</b>	<b>26</b>	<b>0.1</b>	<b>15</b>	<b>&lt;0.1</b>	<b>2</b>	<b>&lt;0.1</b>	<b>16</b>	<b>&lt;0.1</b>	<b>59</b>	<b>0.2</b>

**Table 1B: Cumulative Influenza cases (and age specific rates), by subtype, by age group, Alberta (Aug 29, 2010 – Feb 5, 2011)**

	Flu A (Seasonal-H1)		Flu A (Seasonal-H3)		Flu A (Pandemic H1N1 2009)		Flu A (unresolved typing due to low viral load)		Flu B		Total	
	#	Rate (per 10,000)	#	Rate (per 10,000)	#	Rate (per 10,000)	#	Rate (per 10,000)	#	Rate (per 10,000)	#	Rate (per 10,000)
0 to <2 years	0	0.0	40	3.9	12	1.2	1	0.1	7	0.7	60	5.9
2 to <5 years	0	0.0	20	1.4	2	0.1	2	0.1	7	0.5	31	2.2
5 to <9 years	0	0.0	7	0.4	6	0.3	1	0.1	7	0.4	21	1.2
9 to <18 years	0	0.0	13	0.3	4	0.1	1	<0.1	10	0.2	28	0.7
18 to <65 years	0	0.0	110	0.5	49	0.2	3	0.0	15	0.1	177	0.7
65 to <75 years	0	0.0	12	0.6	0	0.0	0	0.0	0	0.0	12	0.6
75+ years	0	0.0	63	3.5	0	0.0	2	0.1	2	0.1	67	3.7
<b>Total</b>	<b>0</b>	<b>0.0</b>	<b>265</b>	<b>0.7</b>	<b>73</b>	<b>0.2</b>	<b>10</b>	<b>&lt;0.1</b>	<b>48</b>	<b>0.1</b>	<b>396</b>	<b>1.1</b>

Source for Table 1A & 1B: Outbreak Response Toolkit (includes cases with positive respiratory specimens received on or before Feb 5, 2011).

Population data values used to calculate rates are for June 30, 2009 and are estimated using actual population values from the Alberta Health Care Insurance Plan (AHCIP) Registration File as of March 31, 2009.

For more information on data definitions and sources see [Annex: Data Notes section at the end of this report](#)

## SURVEILLANCE AND HEALTH STATUS ASSESSMENT

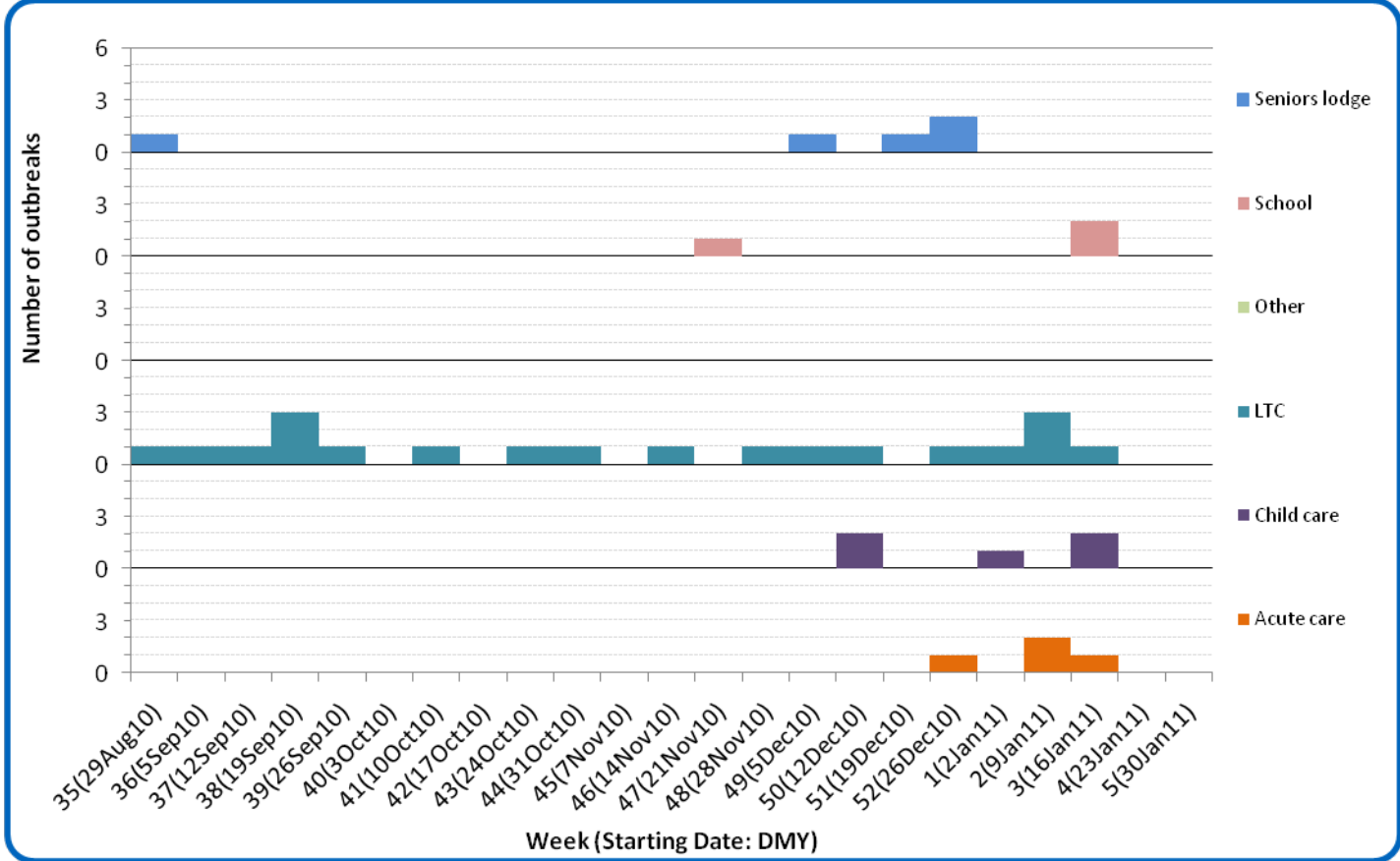
### Public Health Surveillance

Report Date: February 8, 2011

An influenza report targeted to the general public is available at: <http://www.health.alberta.ca/health-info/influenza-evidence.html>

[Back to start of section](#)

Figure 1D: Respiratory outbreaks, by facility type, by onset week, Alberta (2010-2011; school outbreaks may not have a laboratory confirmation)



Source: Alberta Outbreak Reporting Form as of 23:59 on Feb 5, 2011. LTC stands for long term care facility. For more information on data definitions and sources see [Annex: Data Notes section at the end of this report](#)

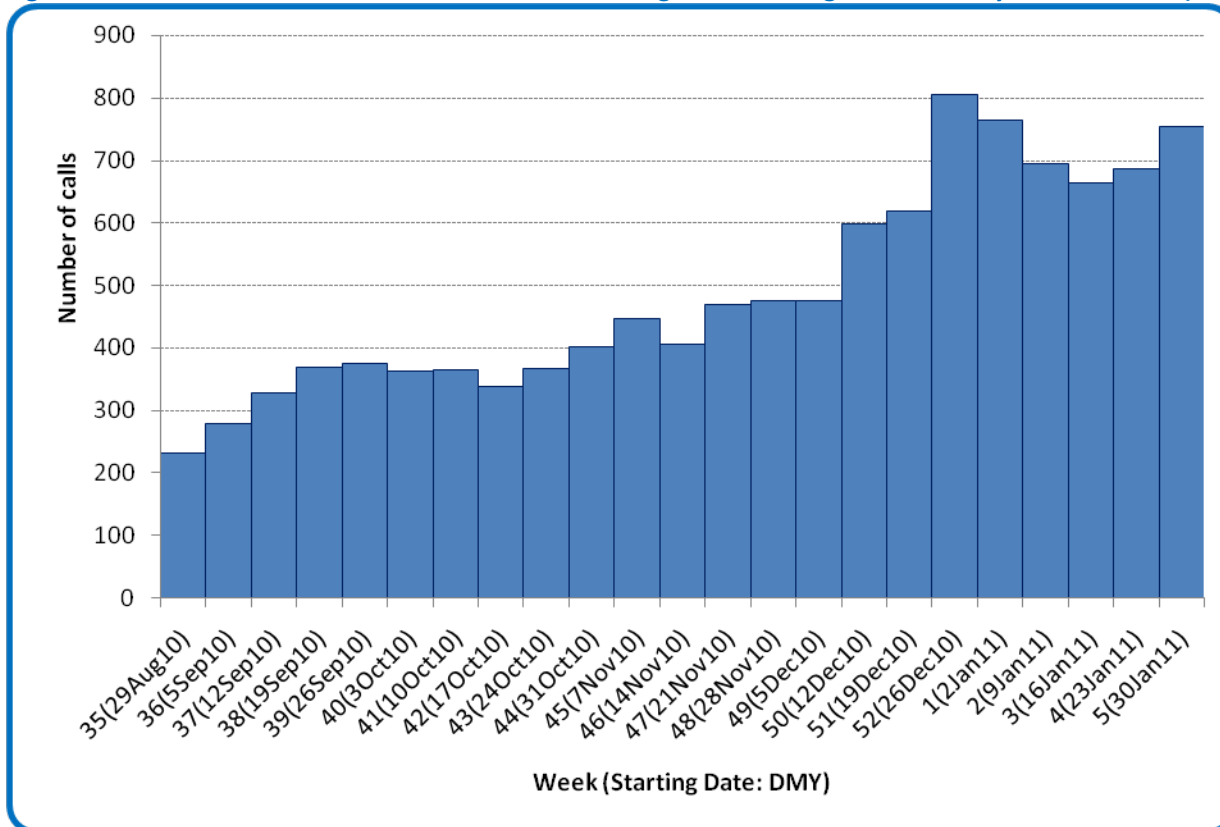
**SURVEILLANCE AND HEALTH STATUS ASSESSMENT**

**Public Health Surveillance**  
Report Date: February 8, 2011

An influenza report targeted to the general public is available at: <http://www.health.alberta.ca/health-info/influenza-evidence.html>

[Back to start of section](#)

Figure 1E: Number of calls to Health Link Alberta for cough or breathing difficulties, by week, Alberta (2010-11)



Source: Sharp Focus - Health Link Alberta - via Alberta Real Time Syndromic Surveillance Net (ARTSSN) as of 23:59 on Feb 5, 2011. For more information on data definitions and sources see [Annex: Data Notes section at the end of this report](#)

**SURVEILLANCE AND HEALTH STATUS ASSESSMENT**

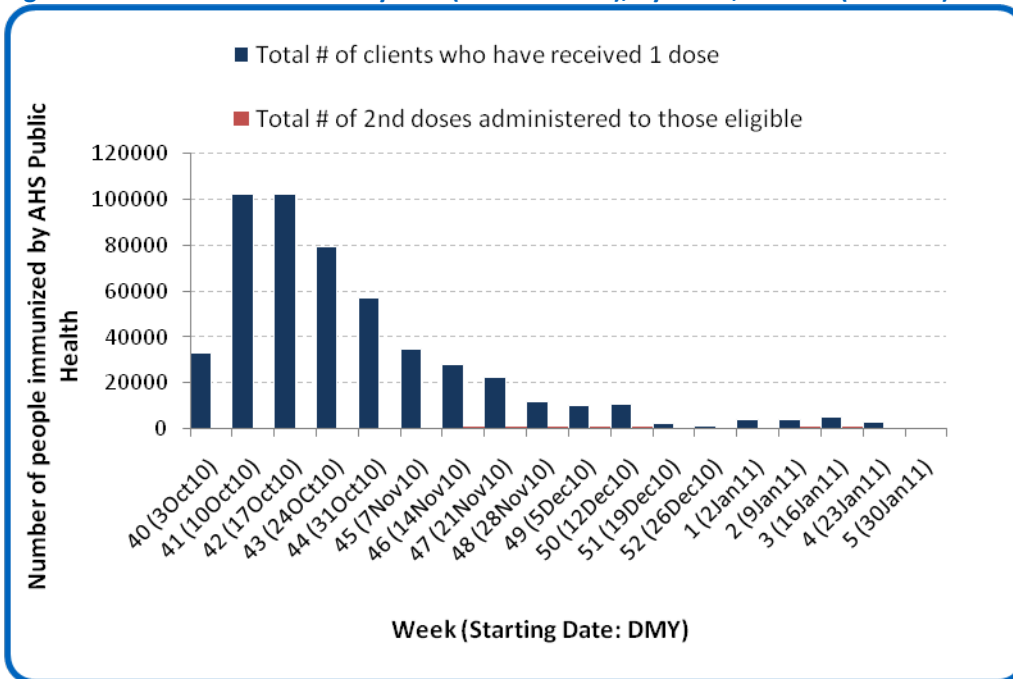
**Public Health Surveillance**

Report Date: February 8, 2011

An influenza report targeted to the general public is available at: <http://www.health.alberta.ca/health-info/influenza-evidence.html>

[Back to start of section](#)

Figure 1F: Number Immunized by AHS (Public Health), by week, Alberta (2010-11)



Source: AHS Zones (doses do not include those delivered by external providers)  
 Note: Immunization coverage rates will be reported at the end of the influenza season  
 For more information on data definitions and sources see [Annex: Data Notes section at the end of this report](#)

[Back to start of section](#)

**Table 1C: AHS (Public Health) Delivered Influenza Immunizations, by priority group, Alberta (2010-11)**

Priority Group	# Immunized (Week 5 – Jan 30-Feb 5, 2011)	Cumulative Number Immunized (since Oct 3, 2010)
Long term care staff	4	2,597
Health care workers	63	18,875
Pregnant women	57	4,615
Residents of long term care	8	4,835
65 years of age and over	133	146,516
All children 6 months up to and including 23 months*	Dose #1	23,795
	Dose #2	6,650
All children 24 months up to and including 59 months*	Dose #1	24,641
	Dose #2	1,281
High risk: 5 years up to and including 8 years*	Dose #1	5,680
	Dose #2	125
High risk: 9 years up to and including 64 years	149	55,525
Healthy: 5 years up to and including 8 years*	Dose #1	18,387
	Dose #2	555
Healthy: 9 years up to and including 64 years	1,054	208,199
<b>Total number of clients who have received 1 dose</b>	<b>2,592</b>	<b>513,665</b>
Total number of 2nd doses administered to those eligible*	406	8,611

Source: AHS Zones (doses do not include those delivered by external providers)

\*Children under 9 years of age who have not received at least one dose of seasonal influenza vaccine in past years require two doses, given at least four weeks apart.

Note: Immunization coverage rates will be reported at the end of the influenza season

For more information on data definitions and sources see [Annex: Data Notes section at the end of this report](#)

## SURVEILLANCE AND HEALTH STATUS ASSESSMENT

### Public Health Surveillance

Report Date: February 8, 2011

An influenza report targeted to the general public is available at: <http://www.health.alberta.ca/health-info/influenza-evidence.html>

## SECTION 2: ZONE 1 - SOUTH

[Back to first page](#)

### Summary

Although several indicators showed decreases last week compared to the previous week, the trend over the last several weeks indicates steady respiratory virus activity in South Zone.

### Laboratory Data (see [Figure 2A](#), [Figure 2B](#), [Figure 2C](#), [Table 2A](#) & [Table 2B](#))

RSV is currently the predominant virus being confirmed in South Zone. So far this season, there have been a total of 28 confirmed cases of influenza in this part of the province, nine of which have been influenza B cases confirmed in the last 2 weeks. At this point in the season, the age specific rate for confirmed influenza cases (all types) in South zone is highest for children between the ages of 2 to less than 5 years, at 5.2 per 10,000. All of the cases in this age group have been predominantly influenza A (H3) and to a lesser extent, influenza type B.

### Outbreaks

There have been no respiratory outbreaks reported in South Zone this season.

### Health Link Alberta Calls (see [Figure 2D](#))

The number of calls to Health Link Alberta for cough or breathing difficulties by residents of South Zone was 13% lower in Week 5 (Jan 30–Feb 5, 2011) than in Week 4, continuing its decline from the peak in Week 3.

### Emergency Department/Urgent Care Center Visits and Hospital Admissions

This information is not available for South Zone.

### Sentinel Physician Office Visits

The combined percentage of ILI and LRTI related visits to sentinel physician offices by residents of South Zone was 42% lower in Week 4 (Jan 23-29, 2011) than in Week 3 because of fewer LRTI related visits. No ILI related visits were reported that week.

## SURVEILLANCE AND HEALTH STATUS ASSESSMENT

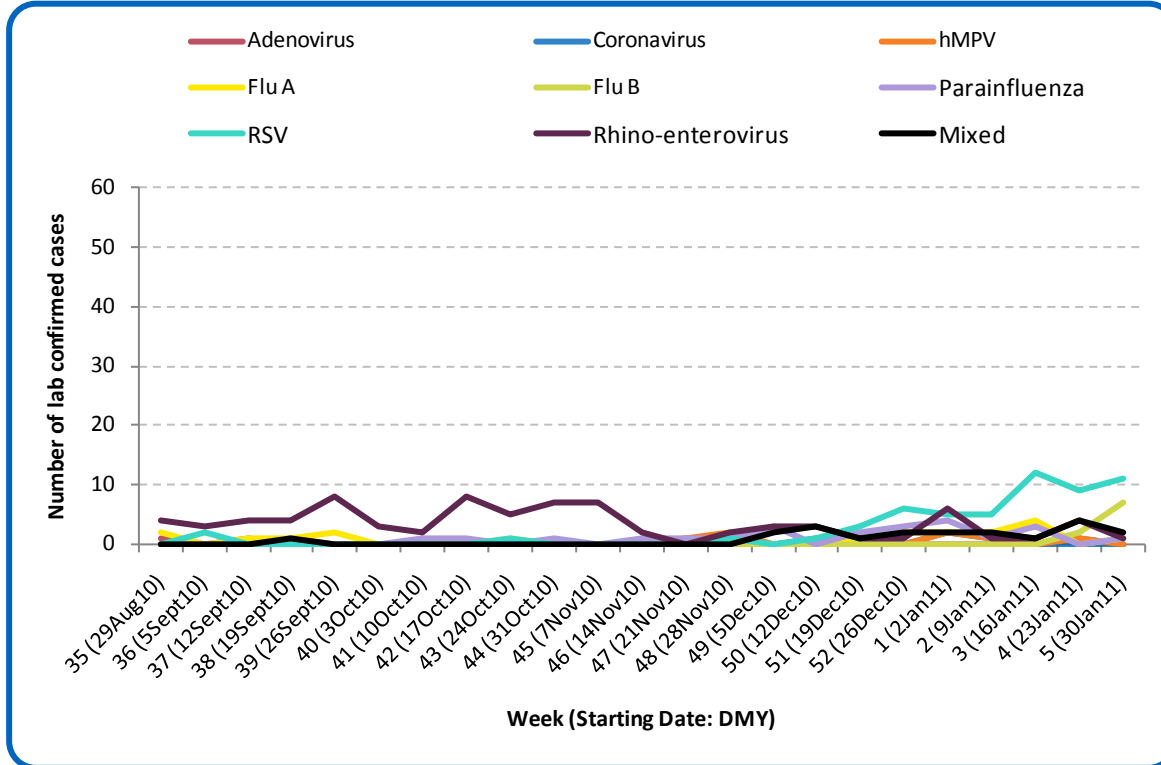
### Public Health Surveillance

Report Date: February 8, 2011

An influenza report targeted to the general public is available at: <http://www.health.alberta.ca/health-info/influenza-evidence.html>

[Back to start of section](#)

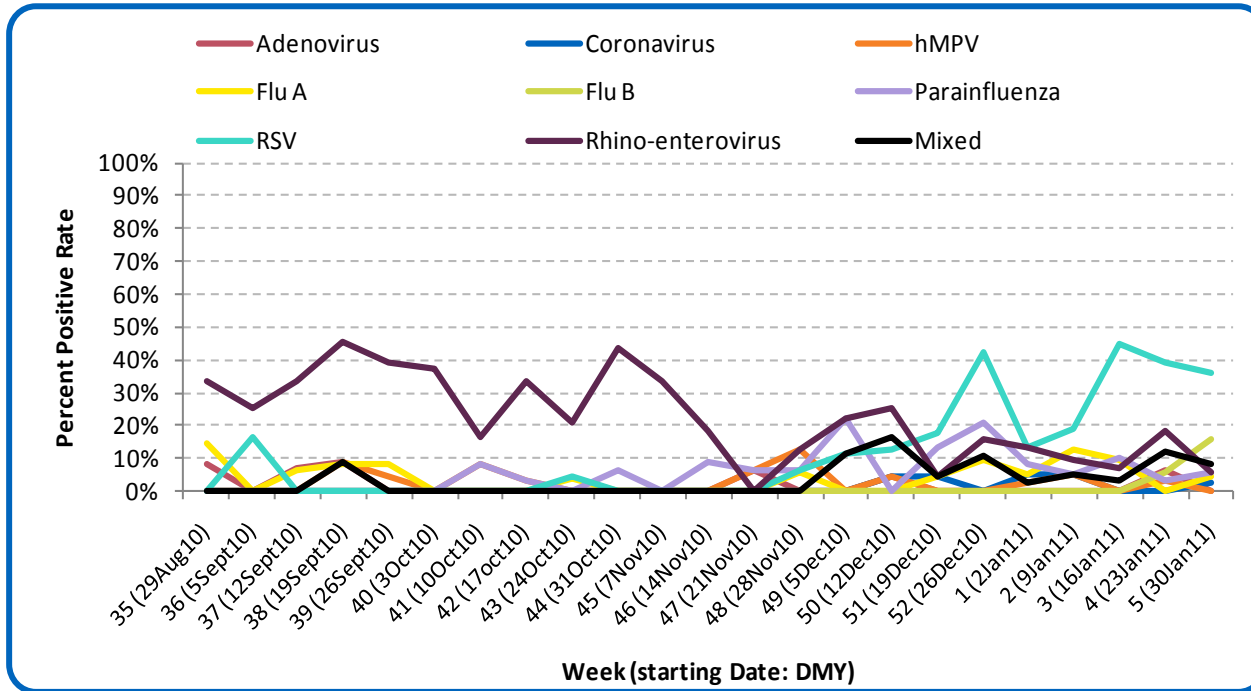
Figure 2A: Laboratory confirmed respiratory virus cases, by virus type, by week, South Zone (2010-2011)



Sources: DIAL – Provincial Laboratory and the Outbreak Response Toolkit (includes cases with positive respiratory specimens received on or before Feb 5, 2011). For more information on data definitions and sources see [Annex: Data Notes section at the end of this report](#)

[Back to start of section](#)

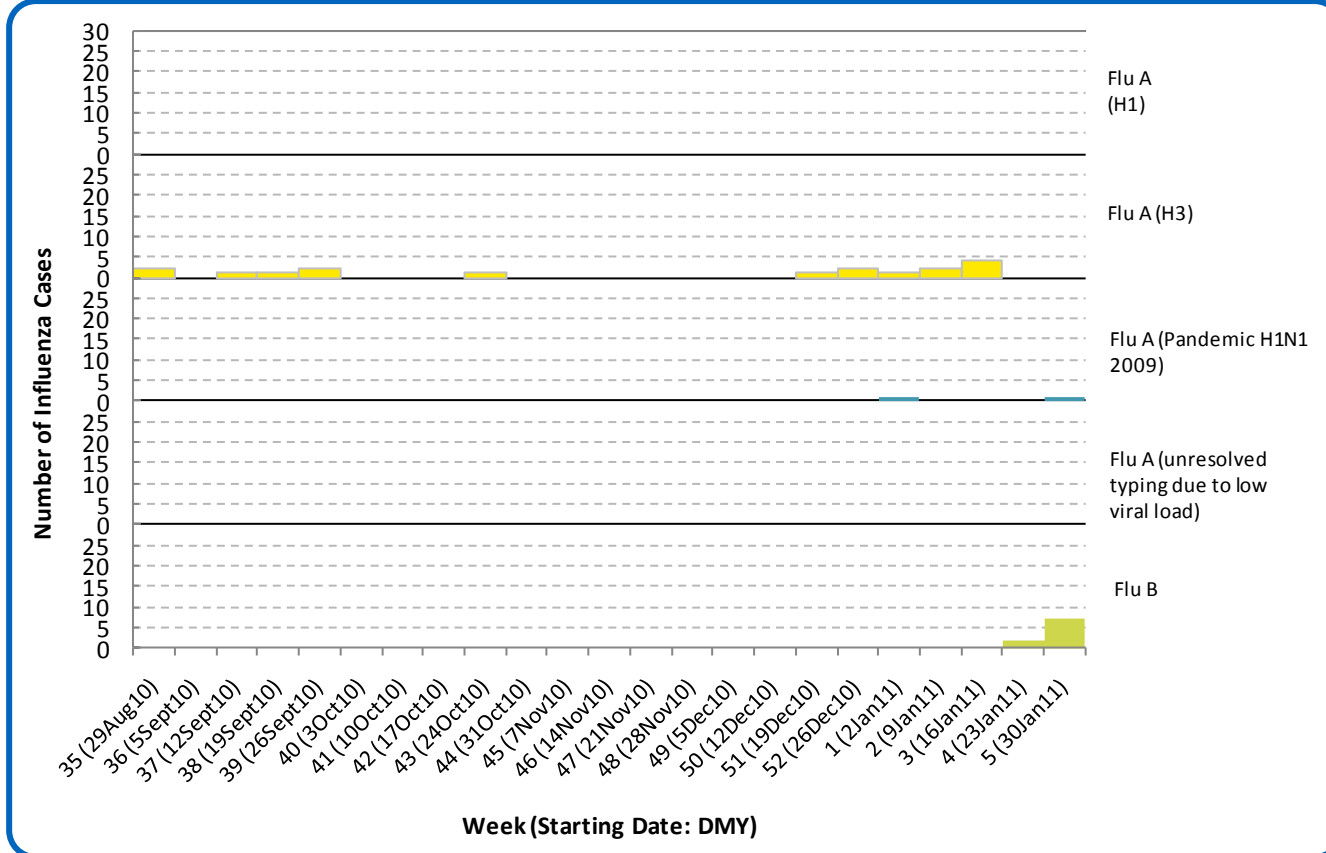
Figure 2B: Respiratory Specimen Percent Positive Rates, by virus type, by week, South Zone (2010-2011)



Source: DIAL – Provincial Laboratory (includes cases with positive respiratory specimens received on or before Feb 5, 2011)  
For more information on data definitions and sources see [Annex: Data Notes section at the end of this report](#)

[Back to start of section](#)

Figure 2C: Laboratory confirmed Influenza cases, by subtype, by week specimen received, South Zone (2010-2011)



Source: Outbreak Response Toolkit (includes cases with positive respiratory specimens received on or before Feb 5, 2011).

\*Note: 1 specimen was positive for influenza B and one other virus type. This cases has been included in the influenza B count, as well as the other respective specimen type. It has not been included in the 'Mixed' category.

For more information on data definitions and sources see [Annex: Data Notes section at the end of this report](#)

SURVEILLANCE AND HEALTH STATUS ASSESSMENT

Public Health Surveillance

Report Date: February 8, 2011

An influenza report targeted to the general public is available at: <http://www.health.alberta.ca/health-info/influenza-evidence.html>

[Back to start of section](#)

**Table 2A: New Influenza cases (and age specific rates), by subtype, by age group, South Zone (Week 5: Jan 30-Feb 5, 2011)**

	Flu A (Seasonal-H1)		Flu A (Seasonal-H3)		Flu A (Pandemic H1N1 2009)		Flu A (unresolved typing due to low viral load)		Flu B		Total	
	#	Rate (per 10,000)	#	Rate (per 10,000)	#	Rate (per 10,000)	#	Rate (per 10,000)	#	Rate (per 10,000)	#	Rate (per 10,000)
0 to <2 years	0	0.0	0	0.0	0	0.0	0	0.0	0	0.0	0	0.0
2 to <5 years	0	0.0	0	0.0	0	0.0	0	0.0	2	1.7	2	1.7
5 to <9 years	0	0.0	0	0.0	0	0.0	0	0.0	0	0.0	0	0.0
9 to <18 years	0	0.0	0	0.0	0	0.0	0	0.0	2	0.6	2	0.6
18 to <65 years	0	0.0	0	0.0	1	0.1	0	0.0	3	0.2	4	0.2
65 to <75 years	0	0.0	0	0.0	0	0.0	0	0.0	0	0.0	0	0.0
75+ years	0	0.0	0	0.0	0	0.0	0	0.0	0	0.0	0	0.0
<b>Total</b>	<b>0</b>	<b>0.0</b>	<b>0</b>	<b>0.0</b>	<b>1</b>	<b>&lt;0.1</b>	<b>0</b>	<b>0.0</b>	<b>7</b>	<b>0.3</b>	<b>8</b>	<b>0.3</b>

**Table 2B: Cumulative Influenza cases (and age specific rates), by subtype, by age group, South Zone (Aug 29, 2010–Feb 5, 2011)**

	Flu A (Seasonal-H1)		Flu A (Seasonal-H3)		Flu A (Pandemic H1N1 2009)		Flu A (unresolved typing due to low viral load)		Flu B		Total	
	#	Rate (per 10,000)	#	Rate (per 10,000)	#	Rate (per 10,000)	#	Rate (per 10,000)	#	Rate (per 10,000)	#	Rate (per 10,000)
0 to <2 years	0	0.0	1	1.2	0	0.0	0	0.0	0	0.0	1	1.2
2 to <5 years	0	0.0	4	3.5	0	0.0	0	0.0	2	1.7	6	5.2
5 to <9 years	0	0.0	0	0.0	0	0.0	0	0.0	0	0.0	0	0.0
9 to <18 years	0	0.0	0	0.0	0	0.0	0	0.0	2	0.6	2	0.6
18 to <65 years	0	0.0	11	0.6	2	0.1	0	0.0	5	0.3	18	1.0
65 to <75 years	0	0.0	0	0.0	0	0.0	0	0.0	0	0.0	0	0.0
75+ years	0	0.0	1	0.5	0	0.0	0	0.0	0	0.0	1	0.5
<b>Total</b>	<b>0</b>	<b>0.0</b>	<b>17</b>	<b>0.6</b>	<b>2</b>	<b>0.1</b>	<b>0</b>	<b>0.0</b>	<b>9</b>	<b>0.3</b>	<b>28</b>	<b>1.0</b>

Source for Tables 2A & 2B: Outbreak Response Toolkit (includes cases with positive respiratory specimens received on or before Feb 5, 2011).

Population data values used to calculate rates are for June 30, 2009 and are estimated using actual population values from the Alberta Health Care Insurance Plan (AHCIP) Registration File as of March 31, 2009.

For more information on data definitions and sources see [Annex: Data Notes section at the end of this report](#)

## SURVEILLANCE AND HEALTH STATUS ASSESSMENT

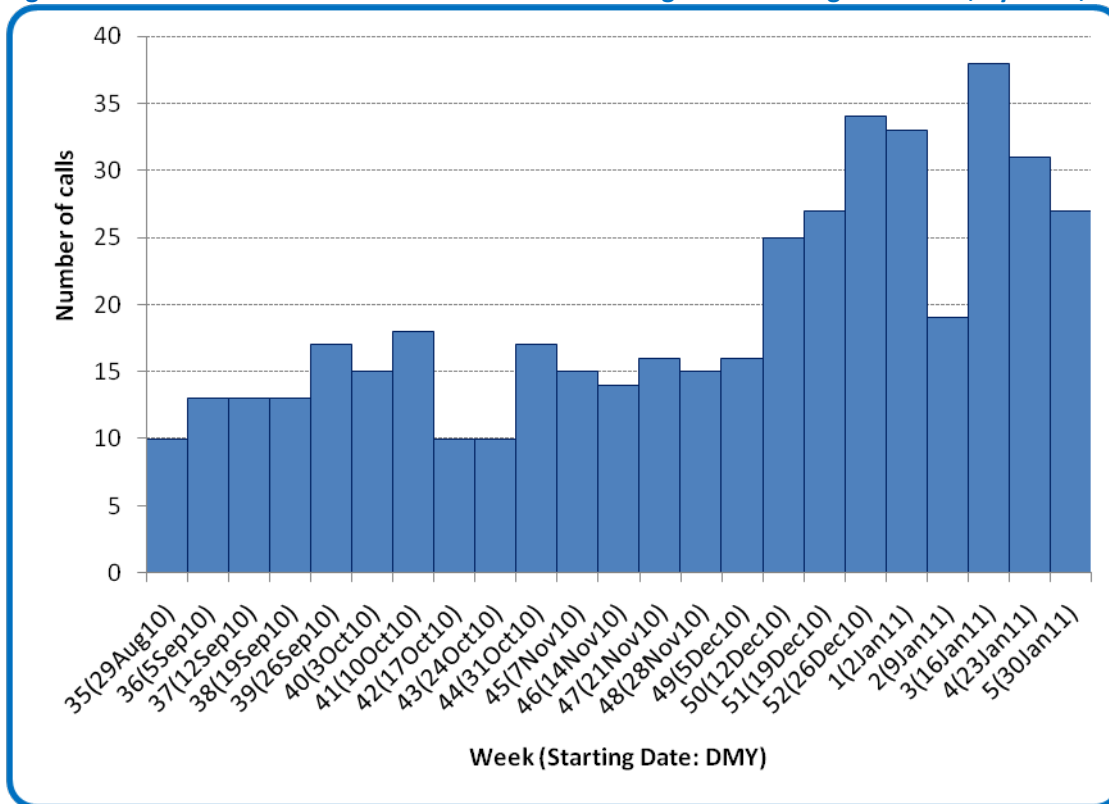
### Public Health Surveillance

Report Date: February 8, 2011

An influenza report targeted to the general public is available at: <http://www.health.alberta.ca/health-info/influenza-evidence.html>

[Back to start of section](#)

Figure 2D: Number of calls to Health Link Alberta for cough or breathing difficulties, by week, Alberta (2010-11)



Source: Sharp Focus - Health Link Alberta - via Alberta Real Time Syndromic Surveillance Net (ARTSSN) as of 23:59 on Feb 5, 2011. For more information on data definitions and sources see [Annex: Data Notes section at the end of this report](#)

**SURVEILLANCE AND HEALTH STATUS ASSESSMENT**

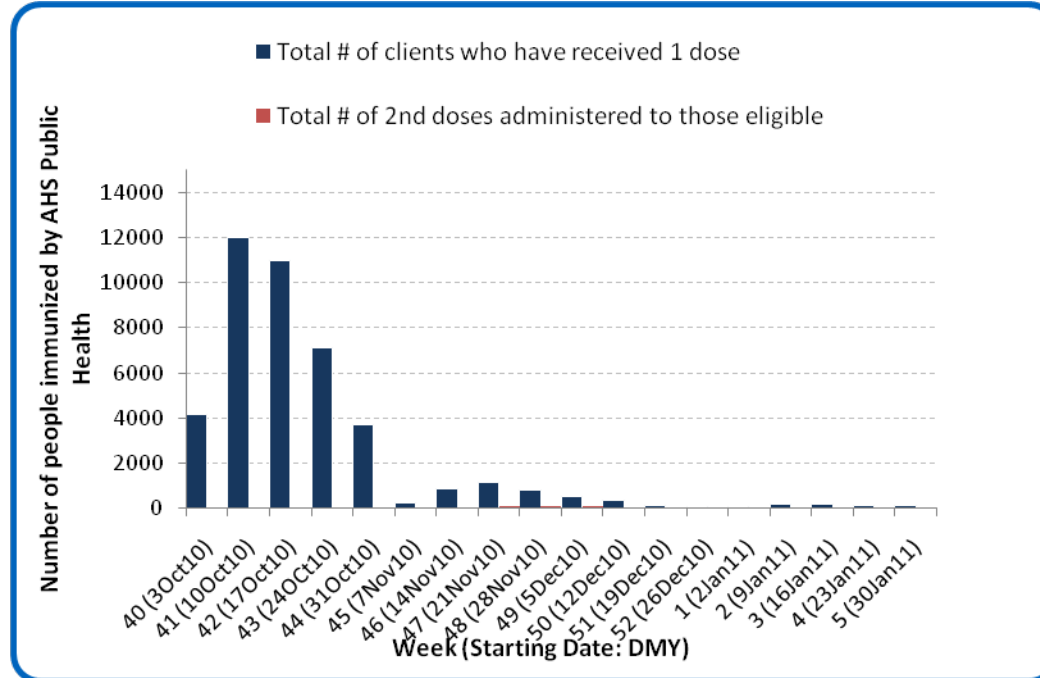
**Public Health Surveillance**

Report Date: February 8, 2011

An influenza report targeted to the general public is available at: <http://www.health.alberta.ca/health-info/influenza-evidence.html>

[Back to start of section](#)

Figure 2E: Number Immunized by AHS (Public Health), by week, South Zone (2010-2011)



Source: AHS Zones (doses do not include those delivered by external providers)  
 Note: Immunization coverage rates will be reported at the end of the influenza season  
 For more information on data definitions and sources see [Annex: Data Notes section at the end of this report](#)

[Back to start of section](#)

**Table 2C: AHS (Public Health) Delivered Influenza Immunizations (with Cumulative totals), by priority group, South Zone (2010-2011)**

Priority Group	Number Immunized (Week 5 – Jan 30-Feb 5, 2011)	Cumulative Number Immunized (since Oct 3, 2010)
Long term care staff	0	615
Health care workers	2	1,562
Pregnant women	3	299
Residents of long term care	0	730
65 years of age and over	10	15,581
All children 6 months up to and including 23 months*	Dose #1	33
	Dose #2	28
All children 24 months up to and including 59 months*	Dose #1	10
	Dose #2	4
High risk: 5 years up to and including 8 years*	Dose #1	3
	Dose #2	4
High risk: 9 years up to and including 64 years	4	4,087
Healthy: 5 years up to and including 8 years*	Dose #1	13
	Dose #2	2
Healthy: 9 years up to and including 64 years	31	14,573
<b>Total number of clients who have received 1 dose</b>	<b>109</b>	<b>42,794</b>
<b>Total number of 2nd doses administered to those eligible*</b>	<b>38</b>	<b>680</b>

Source: AHS Zones (doses do not include those delivered by external providers)

\*Children under 9 years of age who have not received at least one dose of seasonal influenza vaccine in past years require two doses, given at least four weeks apart.

Note: Immunization coverage rates will be reported at the end of the influenza season

For more information on data definitions and sources see [Annex: Data Notes section at the end of this report](#)

## SURVEILLANCE AND HEALTH STATUS ASSESSMENT

### Public Health Surveillance

Report Date: February 8, 2011

An influenza report targeted to the general public is available at: <http://www.health.alberta.ca/health-info/influenza-evidence.html>

## SECTION 3: ZONE 2 - CALGARY

[Back to first page](#)

### Summary

Although several indicators showed decreases last week compared to the previous week (with the exception of Health Link calls for cough/breathing difficulties which increased), the trend over the last several weeks indicates steady respiratory virus activity in Calgary Zone.

### Laboratory Data (see [Figure 3A](#), [Figure 3B](#), [Figure 3C](#), [Table 3A](#) & [Table 3B](#))

RSV is currently the predominant virus circulating in Calgary Zone, although the number of cases confirmed last week decreased from the previous week. Since the beginning of the season, a total of 138 cases of influenza have been confirmed in Calgary Zone (59.4% influenza A (H3); 21.0% influenza A (H1N1) 2009; 4.3% influenza A with unresolved sub-typing and 15.2% influenza B). At this point in the season, the age specific rate for confirmed influenza cases (all types) in Calgary zone is highest for infants 0 to less than 2 years of age, at 4.0 per 10,000. Over half of the cases in this age group have been influenza A (H3).

### Outbreaks (see [Figure 3D](#))

Since the last report, one respiratory outbreak attributed to influenza A (H3) has been confirmed in a Calgary Zone long term care facility (onset date: Jan 17, 2011). The attack rate was 26%. In addition, two new respiratory outbreaks in Calgary Zone long term care facilities are currently pending laboratory confirmation; both had preliminary attack rates of 15%.

### Health Link Alberta Calls (see [Figure 3E](#))

The number of calls to Health Link Alberta for cough or breathing difficulties in the Calgary Zone was 10% higher in Week 5 (Jan 30–Feb 5, 2011) than in Week 4. This indicator has been increasing for the past 4 weeks. .

### Emergency Department/Urgent Care Center Visits and Hospital Admissions (See [Figure 3F](#))

The number of visits and hospital admissions for influenza-like illness (ILI) at the six urban emergency departments/ urgent care centers (ED's) in the City of Calgary was 11% and 31% lower, respectively, in Week 5 (Jan 30 – Feb 5, 2011) compared to the previous week. The percentage of ILI positive visits remained at approximately 7% of all screened visits.

Likewise, the number of visits and hospital admissions of patients with cough symptoms at the six urban emergency departments/urgent care centers in the City of Calgary also decreased by 16% and 32%, respectively, in Week 5 (Jan 30 – Feb 5, 2011) compared to the previous week. This reverses the upward trend seen in the previous two weeks.

### Sentinel Physician Office Visits

The combined percentage for ILI and LRTI related visits was 40% lower in Week 4 (Jan 23-29, 2011) compared to Week 3, due primarily to a lower percentage of ILI-related visits.

## SURVEILLANCE AND HEALTH STATUS ASSESSMENT

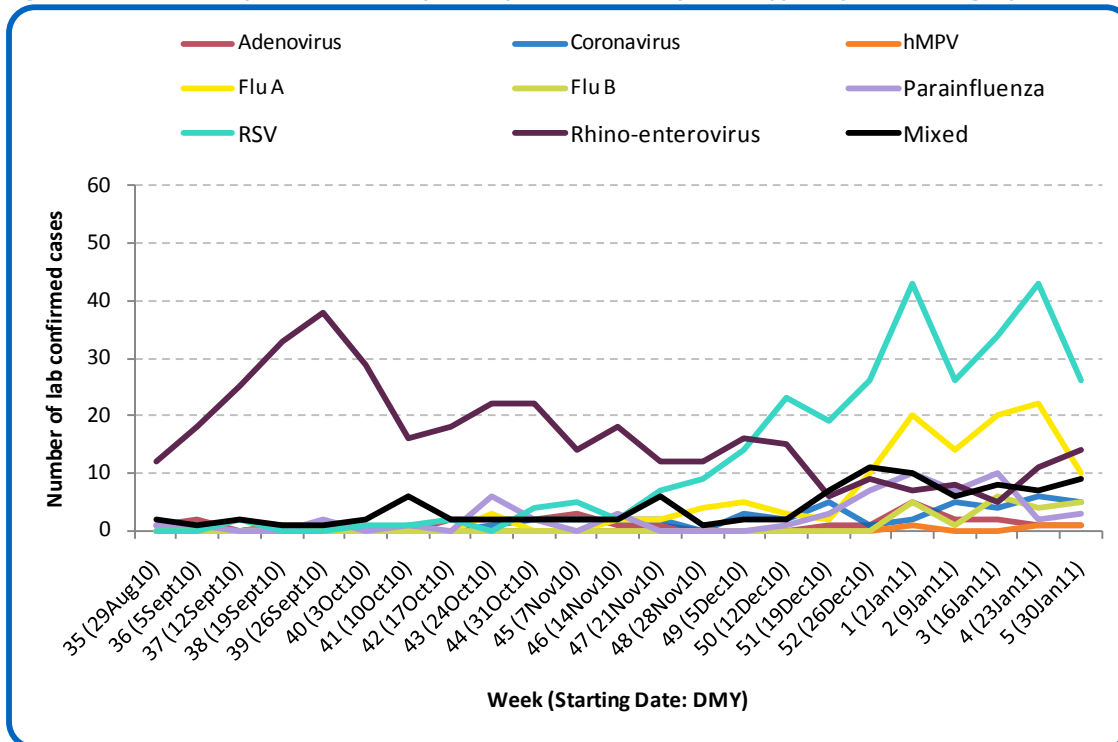
### Public Health Surveillance

Report Date: February 8, 2011

An influenza report targeted to the general public is available at: <http://www.health.alberta.ca/health-info/influenza-evidence.html>

[Back to start of section](#)

Figure 3A: Laboratory confirmed respiratory virus cases, by virus type, by week, Calgary Zone (2010-2011)



Sources: DIAL – Provincial Laboratory and the Outbreak Response Toolkit (includes cases with positive respiratory specimens received on or before Feb 5, 2011). For more information on data definitions and sources see [Annex: Data Notes section at the end of this report](#)

SURVEILLANCE AND HEALTH STATUS ASSESSMENT

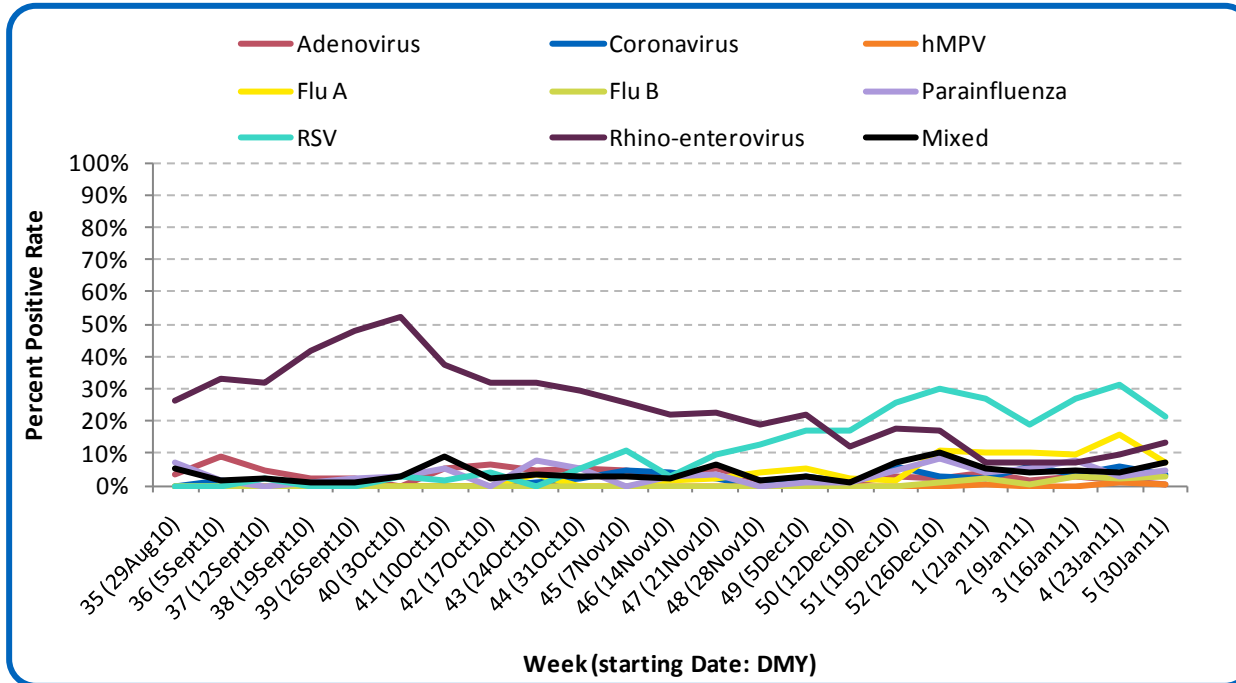
Public Health Surveillance

Report Date: February 8, 2011

An influenza report targeted to the general public is available at: <http://www.health.alberta.ca/health-info/influenza-evidence.html>

[Back to start of section](#)

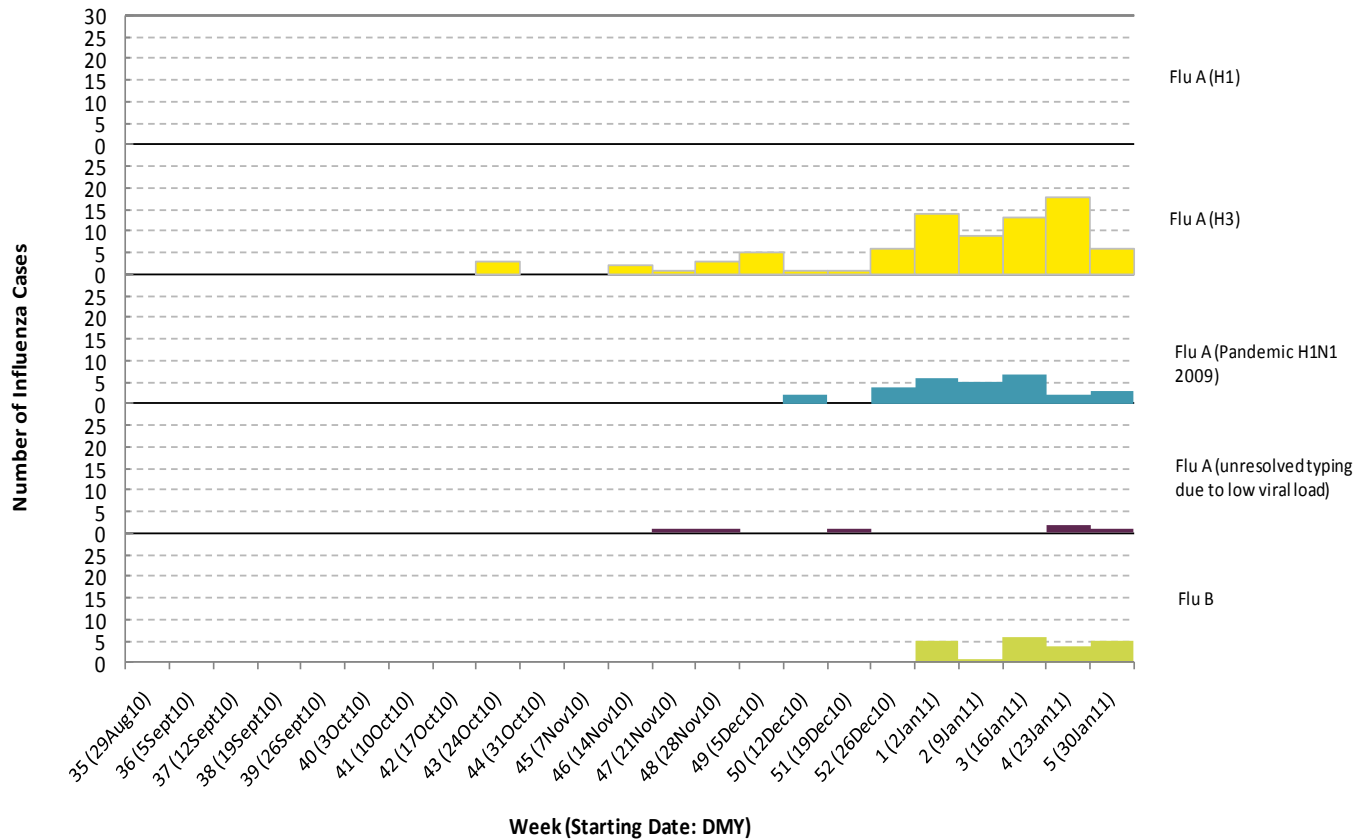
Figure 3B: Respiratory Specimen Percent Positive Rates, by virus type, by week, Calgary Zone (2010-2011)



Source: DIAL – Provincial Laboratory (includes cases with positive respiratory specimens received on or before Feb 5, 2011)  
For more information on data definitions and sources see [Annex: Data Notes section at the end of this report](#)

[Back to start of section](#)

Figure 3C: Laboratory confirmed Influenza cases, by subtype, by week specimen received, Calgary Zone (2010-2011)



\*Note: 3 specimens were positive for influenza A or B and one or more other virus type(s). These cases have been included in the influenza counts, as well as the other respective specimen type(s). They have not been included in the 'Mixed' category. One specimen was positive for both influenza A & B.

Source: Outbreak Response Toolkit (includes cases with positive respiratory specimens received on or before Feb 5, 2011).

For more information on data definitions and sources see [Annex: Data Notes section at the end of this report](#)

SURVEILLANCE AND HEALTH STATUS ASSESSMENT

Public Health Surveillance

Report Date: February 8, 2011

An influenza report targeted to the general public is available at: <http://www.health.alberta.ca/health-info/influenza-evidence.html>

[Back to start of section](#)

**Table 3A: New Influenza cases (and age specific rates), by subtype, by age group, Calgary Zone (Week 5: Jan 30-Feb 5, 2011)**

	Flu A (Seasonal-H1)		Flu A (Seasonal-H3)		Flu A (Pandemic H1N1 2009)		Flu A (unresolved typing due to low viral load)			Flu B		Total
	#	Rate (per 10,000)	#	Rate (per 10,000)	#	Rate (per 10,000)	#	Rate (per 10,000)	#	Rate (per 10,000)	#	Rate (per 10,000)
	0 to <2 years	0	0.0	2	0.5	0	0.0	0	0.0	0	0.0	2
2 to <5 years	0	0.0	2	0.4	0	0.0	0	0.0	0	0.0	2	0.4
5 to <9 years	0	0.0	0	0.0	0	0.0	0	0.0	3	0.5	3	0.5
9 to <18 years	0	0.0	0	0.0	0	0.0	0	0.0	1	0.1	1	0.1
18 to <65 years	0	0.0	2	<0.1	3	<0.1	1	<0.1	1	0.0	7	0.1
65 to <75 years	0	0.0	0	0.0	0	0.0	0	0.0	0	0.0	0	0.0
75+ years	0	0.0	0	0.0	0	0.0	0	0.0	0	0.0	0	0.0
<b>Total</b>	<b>0</b>	<b>0.0</b>	<b>6</b>	<b>&lt;0.1</b>	<b>3</b>	<b>&lt;0.1</b>	<b>1</b>	<b>&lt;0.1</b>	<b>5</b>	<b>0.0</b>	<b>15</b>	<b>0.1</b>

**Table 3B: Cumulative Influenza cases (and age specific rates), by subtype, by age group, Calgary Zone (Aug 29, 2010 – Feb 5, 2011)**

	Flu A (Seasonal-H1)		Flu A (Seasonal-H3)		Flu A (Pandemic H1N1 2009)		Flu A (unresolved typing due to low viral load)			Flu B		Total
	#	Rate (per 10,000)	#	Rate (per 10,000)	#	Rate (per 10,000)	#	Rate (per 10,000)	#	Rate (per 10,000)	#	Rate (per 10,000)
	0 to <2 years	0	0.0	9	2.4	3	0.8	0	0.0	3	0.8	15
2 to <5 years	0	0.0	6	1.2	1	0.2	1	0.2	3	0.6	11	2.2
5 to <9 years	0	0.0	2	0.3	1	0.2	1	0.2	6	1.0	10	1.6
9 to <18 years	0	0.0	5	0.3	0	0.0	1	0.1	2	0.1	8	0.5
18 to <65 years	0	0.0	42	0.5	24	0.3	2	<0.1	6	0.1	74	0.8
65 to <75 years	0	0.0	4	0.6	0	0.0	0	0.0	0	0.0	4	0.6
75+ years	0	0.0	14	2.4	0	0.0	1	0.2	1	0.2	16	2.7
<b>Total</b>	<b>0</b>	<b>0.0</b>	<b>82</b>	<b>0.6</b>	<b>29</b>	<b>0.2</b>	<b>6</b>	<b>&lt;0.1</b>	<b>21</b>	<b>0.2</b>	<b>138</b>	<b>1.0</b>

Source for tables 3A & 3B: Outbreak Response Toolkit (includes cases with positive respiratory specimens received on or before Feb 5, 2011).

Population data values used to calculate rates are for June 30, 2009 and are estimated using actual population values from the Alberta Health Care Insurance Plan (AHCIP) Registration File as of March 31, 2009.

For more information on data definitions and sources see [Annex: Data Notes section at the end of this report](#)

## SURVEILLANCE AND HEALTH STATUS ASSESSMENT

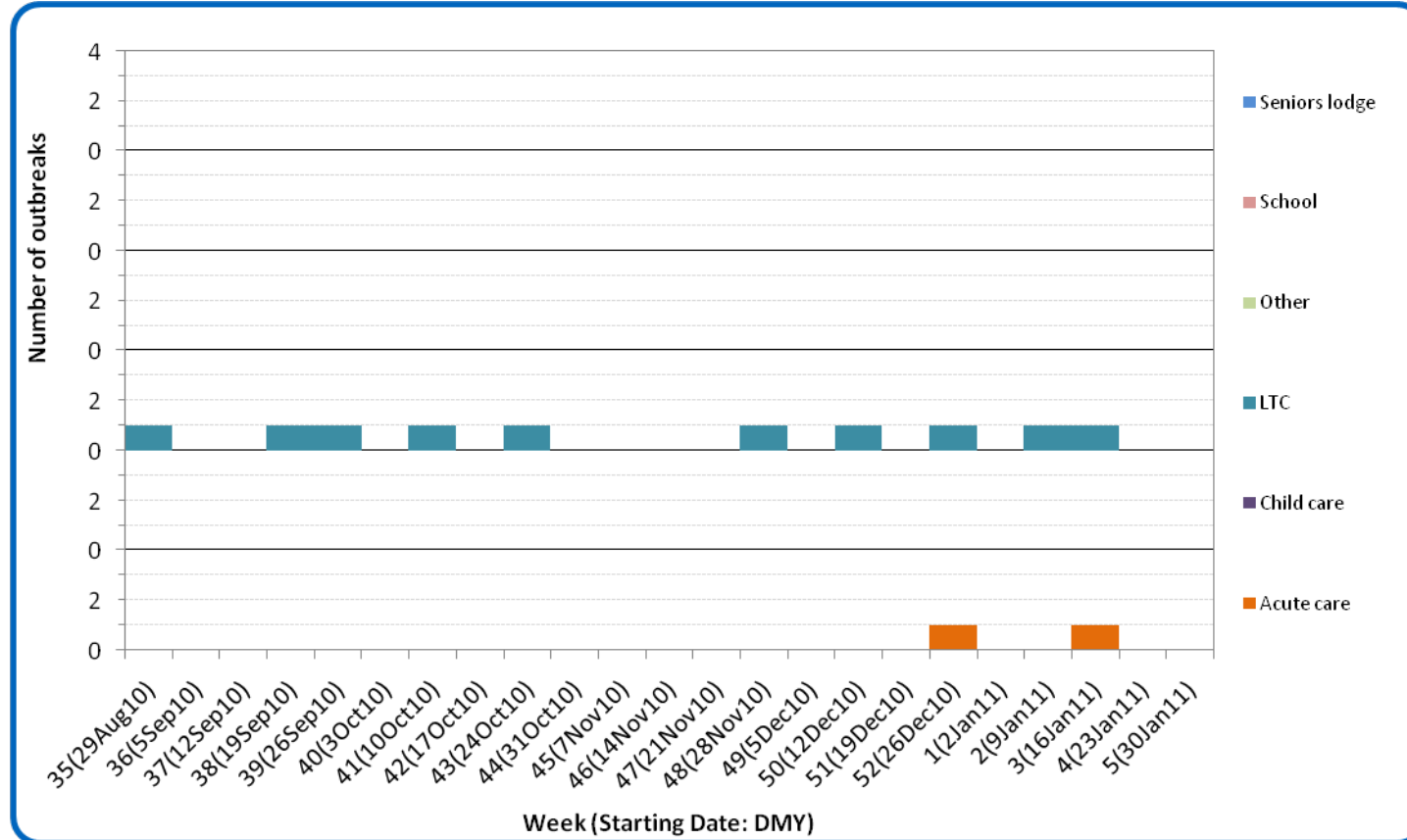
### Public Health Surveillance

Report Date: February 8, 2011

An influenza report targeted to the general public is available at: <http://www.health.alberta.ca/health-info/influenza-evidence.html>

[Back to start of section](#)

Figure 3D: Respiratory outbreaks, by facility type, by onset week, Calgary Zone (2010-2011; school outbreaks may not have a laboratory confirmation)



Source: Alberta Outbreak Reporting Form as of 23:59 on Feb 5, 2011. LTC stands for long term care facility. For more information on data definitions and sources see [Annex: Data Notes section at the end of this report](#)

SURVEILLANCE AND HEALTH STATUS ASSESSMENT

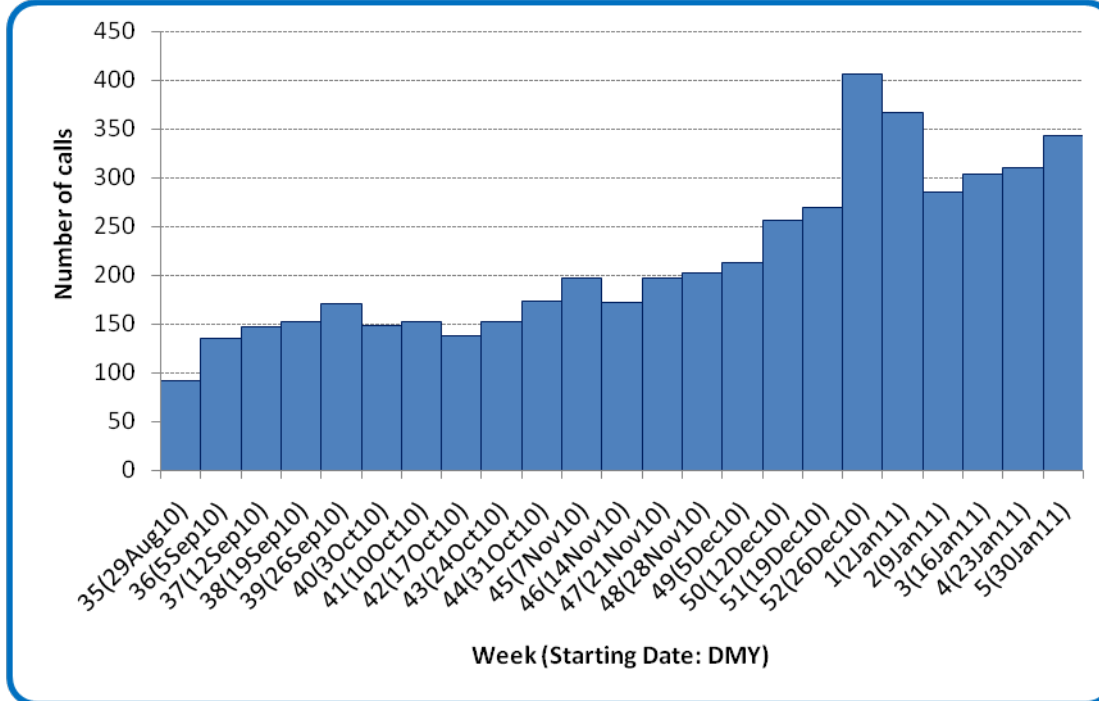
Public Health Surveillance

Report Date: February 8, 2011

An influenza report targeted to the general public is available at: <http://www.health.alberta.ca/health-info/influenza-evidence.html>

[Back to start of section](#)

Figure 3E: Number of calls to Health Link Alberta for cough or breathing difficulties, by week, Calgary Zone (2010-11)



Source: Sharp Focus - Health Link Alberta - via Alberta Real Time Syndromic Surveillance Net (ARTSSN) as of 23:59 on Feb 5, 2011. For more information on data definitions and sources see [Annex: Data Notes section at the end of this report](#)

**SURVEILLANCE AND HEALTH STATUS ASSESSMENT**

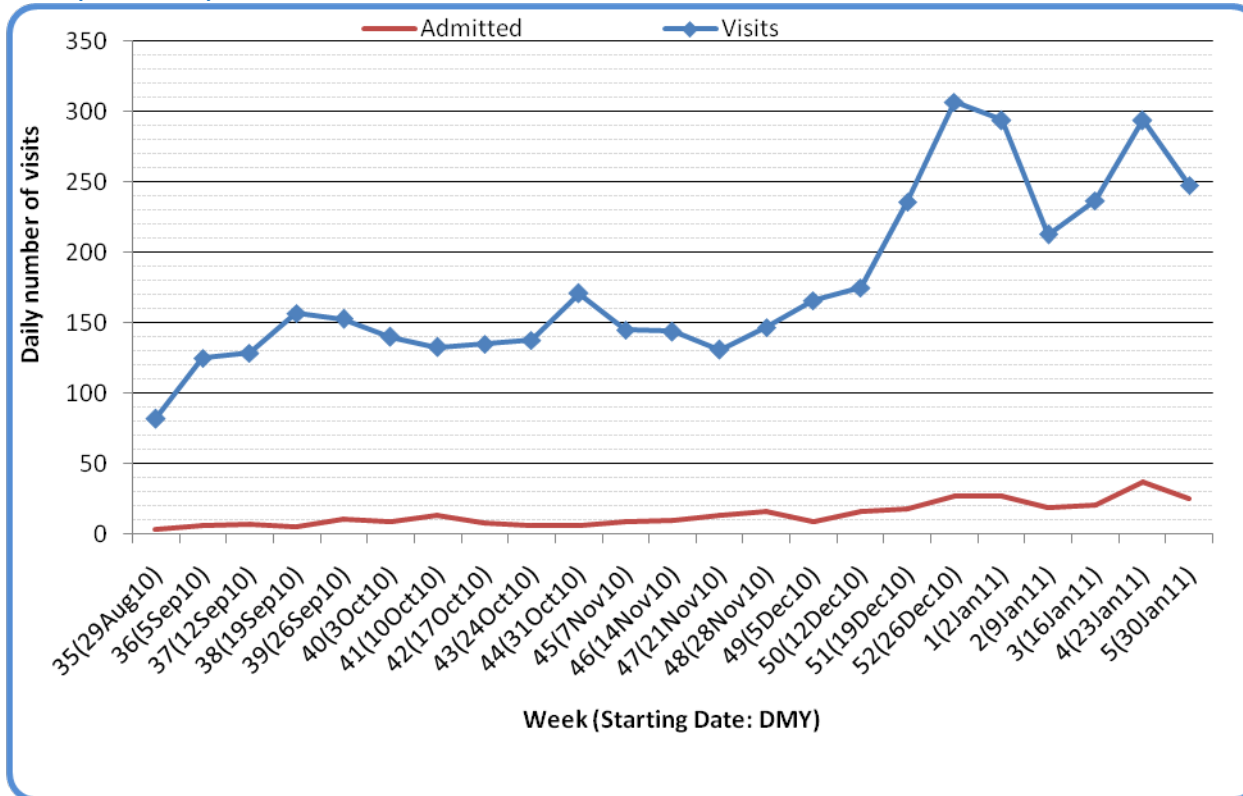
**Public Health Surveillance**

Report Date: February 8, 2011

An influenza report targeted to the general public is available at: <http://www.health.alberta.ca/health-info/influenza-evidence.html>

[Back to first start of section](#)

Figure 3F: Visits to urban emergency departments/urgent care centers in the City of Calgary with cough symptoms and admissions to hospitals, by visit week (2010-2011)



Source: Alberta Real Time Syndromic Surveillance Net (ARTSSN) as of 23:59 on Feb 5, 2011.  
For more information on data definitions and sources see [Annex: Data Notes section at the end of this report](#)

SURVEILLANCE AND HEALTH STATUS ASSESSMENT

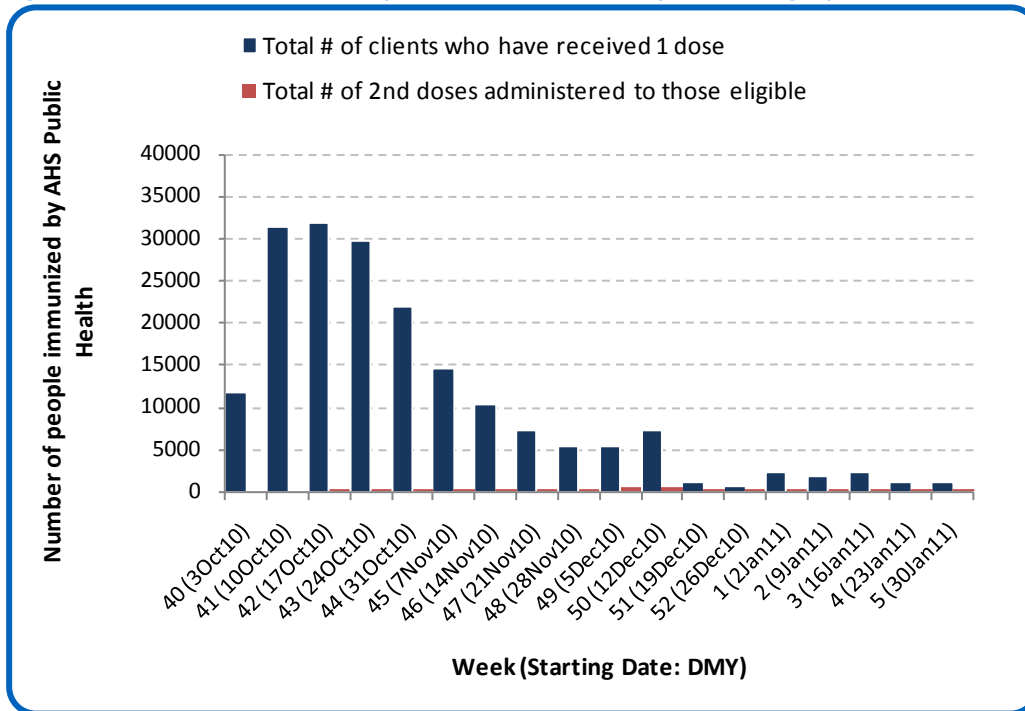
Public Health Surveillance

Report Date: February 8, 2011

An influenza report targeted to the general public is available at: <http://www.health.alberta.ca/health-info/influenza-evidence.html>

[Back to start of section](#)

Figure 3G: Number Immunized by AHS (Public Health), by week, Calgary Zone (2010-2011)



Source: AHS Zones (doses do not include those delivered by external providers)  
 Note: Immunization coverage rates will be reported at the end of the influenza season  
 For more information on data definitions and sources see [Annex: Data Notes section at the end of this report](#)

[Back to start of section](#)

**Table 3C: AHS (Public Health) Delivered Influenza Immunizations (with Cumulative totals), by priority group, Calgary Zone (2010-2011)**

Priority Group	Number Immunized (Week 5 – Jan 30-Feb 5, 2011)	Cumulative Number Immunized (since Oct 3, 2010)
Long term care staff	1	447
Health care workers	20	5,300
Pregnant women	28	1,928
Residents of long term care	0	706
65 years of age and over	19	44,661
All children 6 months up to and including 23 months*	Dose #1	408
	Dose #2	158
All children 24 months up to and including 59 months*	Dose #1	155
	Dose #2	21
High risk: 5 years up to and including 8 years*	Dose #1	14
	Dose #2	1
High risk: 9 years up to and including 64 years	49	19,844
Healthy: 5 years up to and including 8 years*	Dose #1	74
	Dose #2	17
Healthy: 9 years up to and including 64 years	476	82,772
<b>Total number of clients who have received 1 dose</b>	<b>1,244</b>	<b>187,795</b>
<b>Total number of 2nd doses administered to those eligible*</b>	<b>197</b>	<b>3,627</b>

Source: AHS Zones (doses do not include those delivered by external providers)

\*Children under 9 years of age who have not received at least one dose of seasonal influenza vaccine in past years require two doses, given at least four weeks apart.

Note: Immunization coverage rates will be reported at the end of the influenza season

For more information on data definitions and sources see [Annex: Data Notes section at the end of this report](#)

## SURVEILLANCE AND HEALTH STATUS ASSESSMENT

### Public Health Surveillance

Report Date: February 8, 2011

An influenza report targeted to the general public is available at: <http://www.health.alberta.ca/health-info/influenza-evidence.html>

## SECTION 4: ZONE 3 - CENTRAL

[Back to first page](#)

### Summary

Although the number of respiratory outbreaks reported in Central Zone has been sporadic, respiratory virus activity does appear to be increasing. The number of laboratory confirmed respiratory virus cases (particularly RSV), the number calls made to Health Link Alberta for cough/breathing difficulties and the number visits to sentinel physicians offices related to lower respiratory tract infections have all been increasing.

### Laboratory Data (see [Figure 4A](#), [Figure 4B](#), [Figure 4C](#), [Table 4A](#) & [Table 4B](#))

The number of new confirmed RSV cases increased in Week 5 (Jan 30 – Feb 5, 2011) compared to the previous week. The total number of influenza cases confirmed in Central zone this season is 45. At this point in the season, the age-specific rate for confirmed cases of influenza in those 75 years and over is currently 6.6 per 10,000, while the age-specific rate is 4.1 per 10,000 for infants aged 0 to less than 2 years of age. For all other age groups, it is less than 1 per 10,000. All of the cases in these two age groups this season have been influenza A (H3).

### Outbreaks (see [Figure 4D](#))

Since last week's report, one new respiratory outbreak has been reported in Central Zone from a long term care facility. The onset date was Jan 31, 2011 and the preliminary attack rate was 5%.

### Health Link Alberta Calls (see [Figure 4E](#))

The number of calls to Health Link Alberta in Central Zone for cough or breathing difficulties was 49% higher in Week 5 (Jan 30 – Feb 5, 2011) than in Week 4, reaching the highest level this indicator has reached this season.

### Emergency Department/Urgent Care Center Visits and Hospital Admissions

There are no data available from this zone.

### Sentinel Physician Office Visits

The combined percentage of ILI and LTRI related visits to sentinel physician offices by residents of Central Zone was 134% higher in Week 4 (Jan 23-29, 2011) compared to Week 3. This increase was due solely to LTRI related visits (no ILI related visits have been reported since the beginning of January).

## SURVEILLANCE AND HEALTH STATUS ASSESSMENT

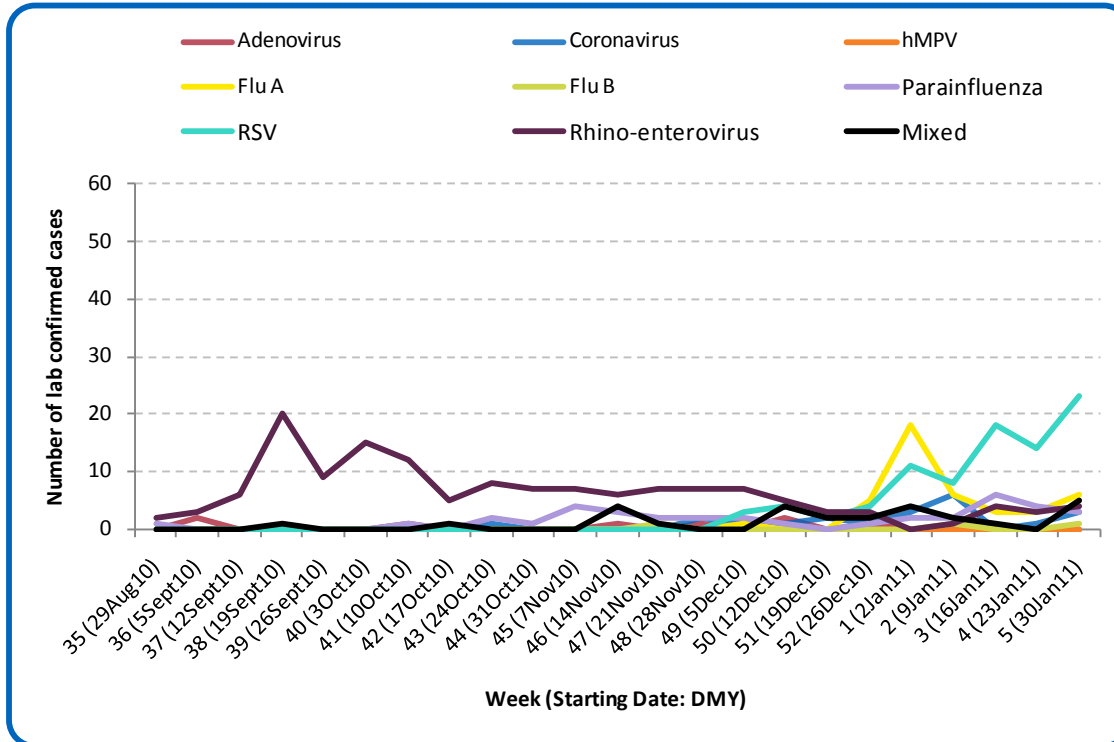
### Public Health Surveillance

Report Date: February 8, 2011

An influenza report targeted to the general public is available at: <http://www.health.alberta.ca/health-info/influenza-evidence.html>

[Back to start of section](#)

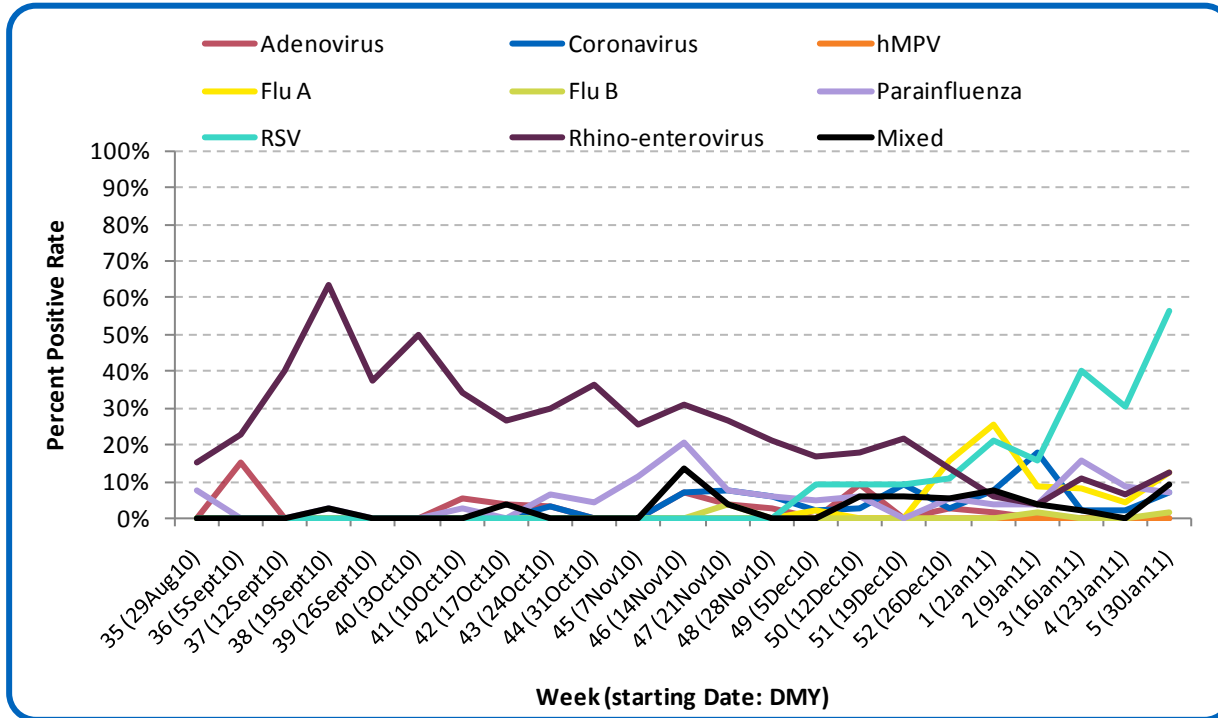
Figure 4A: Laboratory confirmed respiratory virus cases, by virus type, by week, Central Zone (2010-2011)



Sources: DIAL – Provincial Laboratory and the Outbreak Response Toolkit (includes cases with positive respiratory specimens received on or before Feb 5, 2011). For more information on data definitions and sources see [Annex: Data Notes section at the end of this report](#)

[Back to start of section](#)

Figure 4B: Respiratory Specimen Percent Positive Rates, by virus type, by week, Central Zone (2010-2011)



Source: DIAL – Provincial Laboratory (includes cases with positive respiratory specimens received on or before Feb 5, 2011)  
For more information on data definitions and sources see [Annex: Data Notes section at the end of this report](#)

SURVEILLANCE AND HEALTH STATUS ASSESSMENT

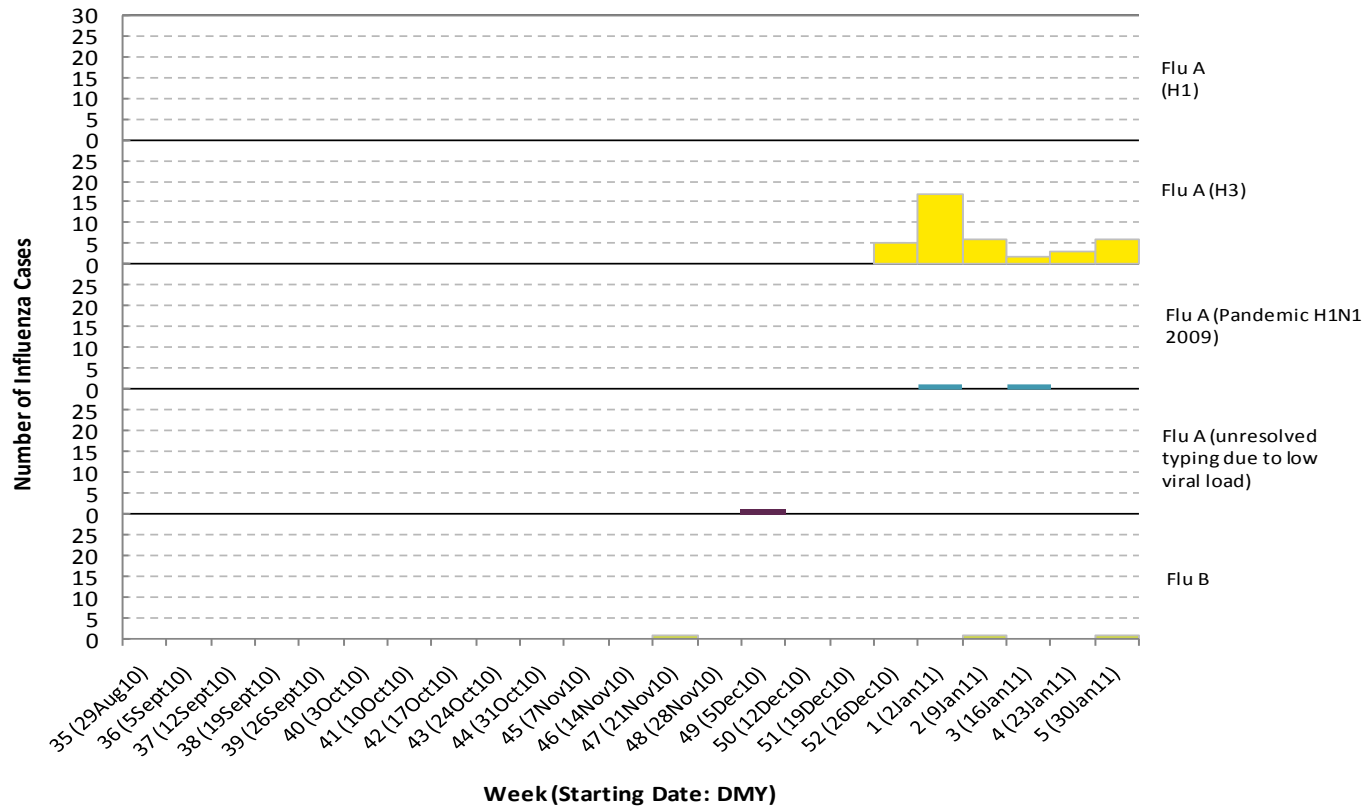
Public Health Surveillance

Report Date: February 8, 2011

An influenza report targeted to the general public is available at: <http://www.health.alberta.ca/health-info/influenza-evidence.html>

[Back to start of section](#)

Figure 4C: Laboratory confirmed Influenza cases, by subtype, by week specimen received, Central Zone (2010-2011)



\*Note: 2 specimens were positive for influenza A or B and one or more other virus type(s). These cases have been included in the influenza counts, as well as the other respective specimen type(s). They have not been included in the 'Mixed' category.

Source: Outbreak Response Toolkit (includes cases with positive respiratory specimens received on or before Feb 5, 2011).

For more information on data definitions and sources see [Annex: Data Notes section at the end of this report](#)

SURVEILLANCE AND HEALTH STATUS ASSESSMENT

Public Health Surveillance

Report Date: February 8, 2011

An influenza report targeted to the general public is available at: <http://www.health.alberta.ca/health-info/influenza-evidence.html>

[Back to start of section](#)

**Table 4A: New Influenza cases (and age specific rates), by subtype, by age group, Central Zone (Week 5: Jan 30-Feb 5, 2011)**

	Flu A (Seasonal-H1)		Flu A (Seasonal-H3)		Flu A (Pandemic H1N1 2009)		Flu A (unresolved typing due to low viral load)			Flu B		Total	
	#	Rate (per 10,000)	#	Rate (per 10,000)	#	Rate (per 10,000)	#	Rate (per 10,000)	#	Rate (per 10,000)	#	Rate (per 10,000)	
0 to <2 years	0	0.0	0	0.0	0	0.0	0	0.0	0	0.0	0	0.0	
2 to <5 years	0	0.0	0	0.0	0	0.0	0	0.0	0	0.0	0	0.0	
5 to <9 years	0	0.0	1	0.5	0	0.0	0	0.0	0	0.0	1	0.5	
9 to <18 years	0	0.0	0	0.0	0	0.0	0	0.0	0	0.0	0	0.0	
18 to <65 years	0	0.0	2	0.1	0	0.0	0	0.0	1	<0.1	3	0.1	
65 to <75 years	0	0.0	0	0.0	0	0.0	0	0.0	0	0.0	0	0.0	
75+ years	0	0.0	3	1.1	0	0.0	0	0.0	0	0.0	3	1.1	
<b>Total</b>	<b>0</b>	<b>0.0</b>	<b>6</b>	<b>0.1</b>	<b>0</b>	<b>0.0</b>	<b>0</b>	<b>0.0</b>	<b>1</b>	<b>&lt;0.1</b>	<b>7</b>	<b>0.2</b>	

**Table 4B: Cumulative Influenza cases (and age specific rates), by subtype, by age group, Central Zone (Aug 29, 2010 – Feb 5, 2011)**

	Flu A (Seasonal-H1)		Flu A (Seasonal-H3)		Flu A (Pandemic H1N1 2009)		Flu A (unresolved typing due to low viral load)			Flu B		Total	
	#	Rate (per 10,000)	#	Rate (per 10,000)	#	Rate (per 10,000)	#	Rate (per 10,000)	#	Rate (per 10,000)	#	Rate (per 10,000)	
0 to <2 years	0	0.0	5	4.1	0	0.0	0	0.0	0	0.0	5	4.1	
2 to <5 years	0	0.0	0	0.0	0	0.0	0	0.0	0	0.0	0	0.0	
5 to <9 years	0	0.0	1	0.5	0	0.0	0	0.0	0	0.0	1	0.5	
9 to <18 years	0	0.0	2	0.4	0	0.0	0	0.0	0	0.0	2	0.4	
18 to <65 years	0	0.0	11	0.4	2	0.1	1	<0.1	3	0.1	17	0.6	
65 to <75 years	0	0.0	2	0.7	0	0.0	0	0.0	0	0.0	2	0.7	
75+ years	0	0.0	18	6.6	0	0.0	0	0.0	0	0.0	18	6.6	
<b>Total</b>	<b>0</b>	<b>0.0</b>	<b>39</b>	<b>0.9</b>	<b>2</b>	<b>&lt;0.1</b>	<b>1</b>	<b>&lt;0.1</b>	<b>3</b>	<b>0.1</b>	<b>45</b>	<b>1.0</b>	

Source for Tables 4A & 4B: Outbreak Response Toolkit (includes cases with positive respiratory specimens received on or before Feb 5, 2011).

Population data values used to calculate rates are for June 30, 2009 and are estimated using actual population values from the Alberta Health Care Insurance Plan (AHCIP) Registration File as of March 31, 2009.

For more information on data definitions and sources see [Annex: Data Notes section at the end of this report](#)

## SURVEILLANCE AND HEALTH STATUS ASSESSMENT

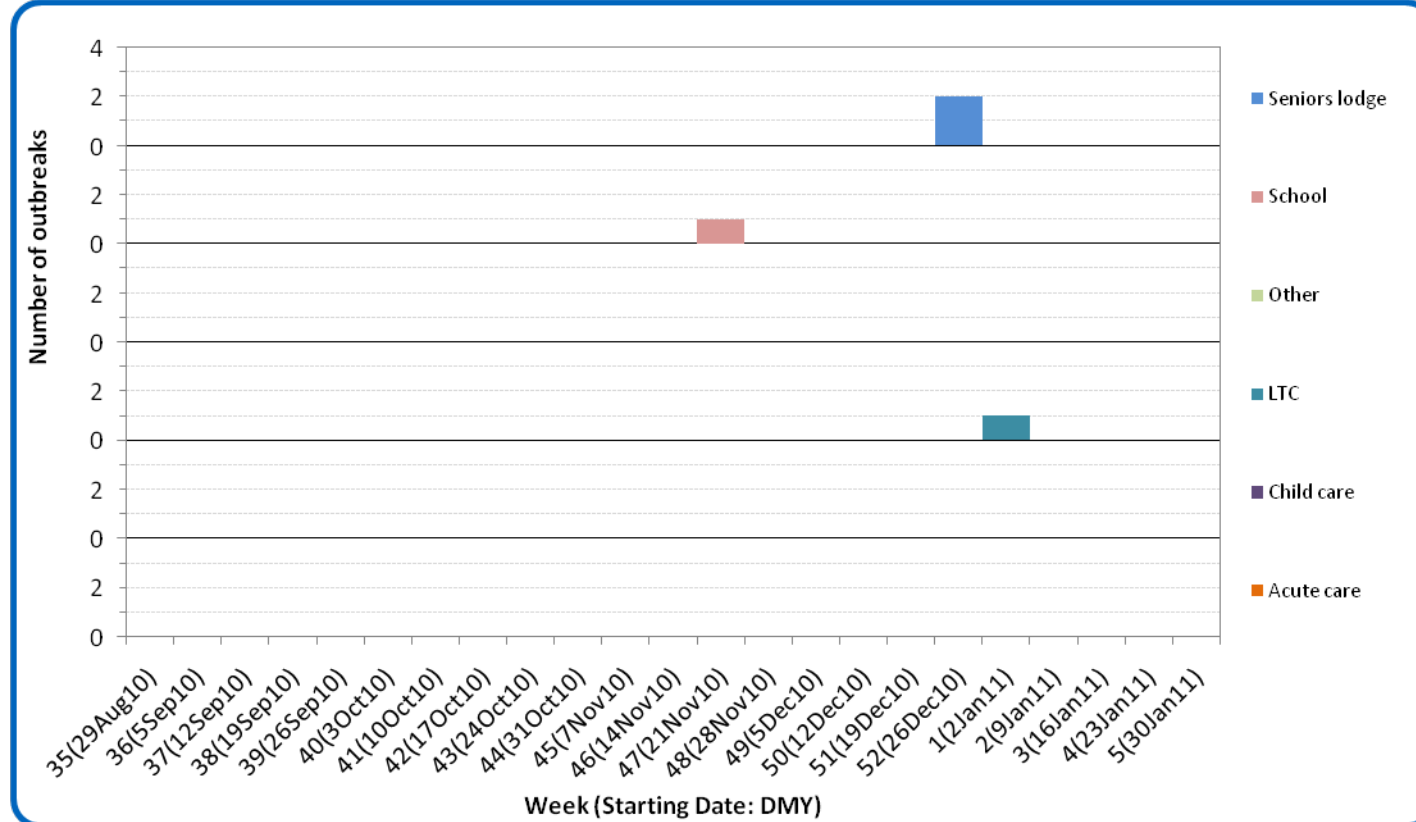
### Public Health Surveillance

Report Date: February 8, 2011

An influenza report targeted to the general public is available at: <http://www.health.alberta.ca/health-info/influenza-evidence.html>

[Back to start of section](#)

Figure 4D: Respiratory outbreaks, by facility type, by onset week, Central Zone (2010-2011; school outbreaks may not have a laboratory confirmation)



Source: Alberta Outbreak Reporting Form as of 23:59 on Feb 5, 2011.

For more information on data definitions and sources see [Annex: Data Notes section at the end of this report](#). LTC stands for long term care facility.

**SURVEILLANCE AND HEALTH STATUS ASSESSMENT**

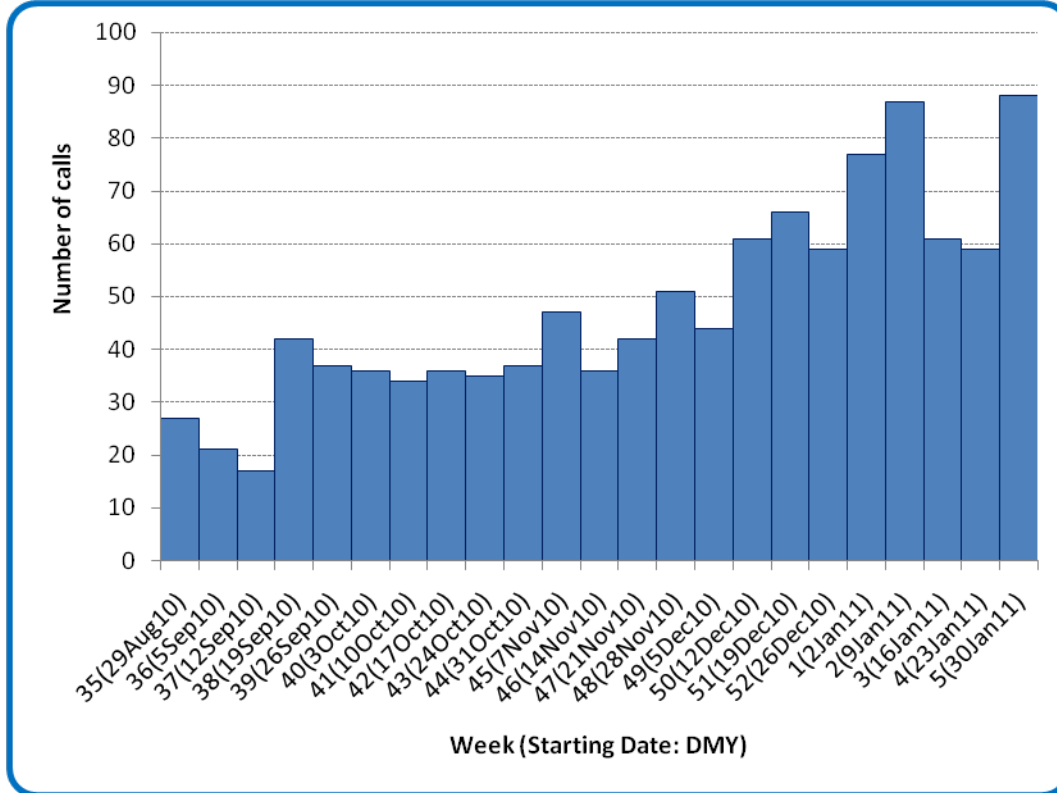
**Public Health Surveillance**

Report Date: February 8, 2011

An influenza report targeted to the general public is available at: <http://www.health.alberta.ca/health-info/influenza-evidence.html>

[Back to start of section](#)

Figure 4E: Number of calls to Health Link Alberta for cough or breathing difficulties, by week, Central Zone (2010-11)



Source: Sharp Focus - Health Link Alberta - via Alberta Real Time Syndromic Surveillance Net (ARTSSN) as of 23:59 on Feb 5, 2011. For more information on data definitions and sources see [Annex: Data Notes section at the end of this report](#)

**SURVEILLANCE AND HEALTH STATUS ASSESSMENT**

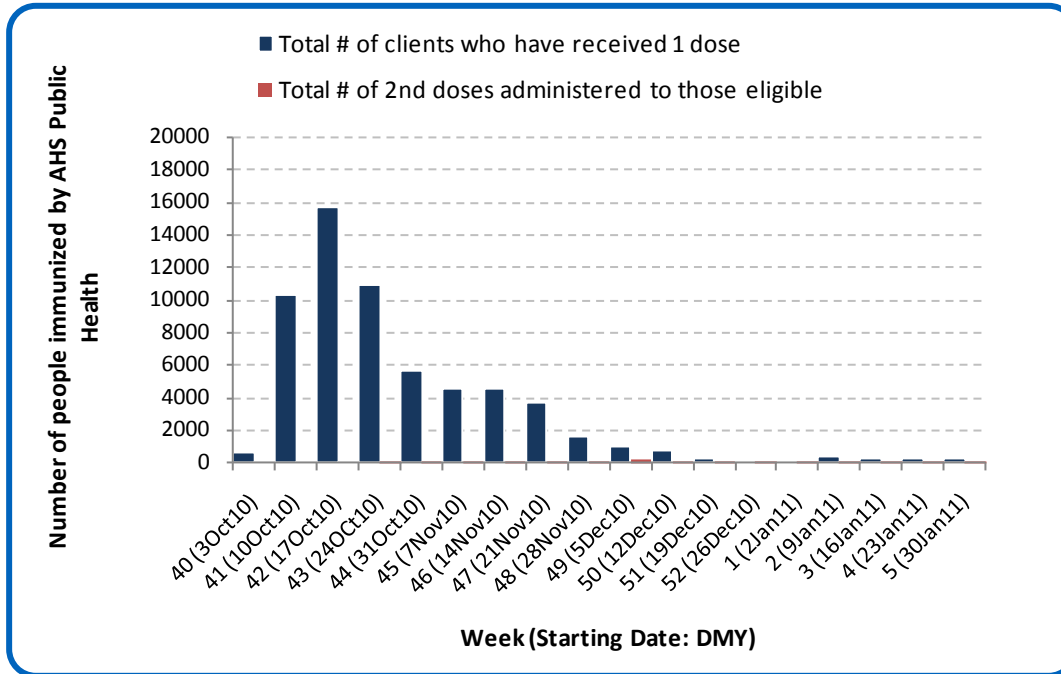
**Public Health Surveillance**

Report Date: February 8, 2011

An influenza report targeted to the general public is available at: <http://www.health.alberta.ca/health-info/influenza-evidence.html>

[Back to start of section](#)

Figure 4F: Number Immunized by AHS (Public Health), by week, Central Zone (2010-2011)



Source: AHS Zones (doses do not include those delivered by external providers)  
 Note: Immunization coverage rates will be reported at the end of the influenza season  
 For more information on data definitions and sources see [Annex: Data Notes section at the end of this report](#)

[Back to start of section](#)

**Table 4C: AHS (Public Health) Delivered Influenza Immunizations (with Cumulative totals), by priority group, Central Zone (2010-2011)**

Priority Group	Number Immunized (Week 5 – Jan 30-Feb 5, 2011)	Cumulative Number Immunized (since Oct 3, 2010)
Long term care staff	0	403
Health care workers	12	2,570
Pregnant women	3	425
Residents of long term care	0	1,104
65 years of age and over	34	22,113
All children 6 months up to and including 23 months*	Dose #1	2,137
	Dose #2	753
All children 24 months up to and including 59 months*	Dose #1	2,239
	Dose #2	167
High risk: 5 years up to and including 8 years*	Dose #1	634
	Dose #2	23
High risk: 9 years up to and including 64 years	19	6,831
Healthy: 5 years up to and including 8 years*	Dose #1	1,932
	Dose #2	71
Healthy: 9 years up to and including 64 years	82	20,607
<b>Total number of clients who have received 1 dose</b>	<b>244</b>	<b>60,995</b>
<b>Total number of 2nd doses administered to those eligible*</b>	<b>46</b>	<b>1,014</b>

Source: AHS Zones (doses do not include those delivered by external providers)

\*Children under 9 years of age who have not received at least one dose of seasonal influenza vaccine in past years require two doses, given at least four weeks apart.

Note: Immunization coverage rates will be reported at the end of the influenza season

For more information on data definitions and sources see [Annex: Data Notes section at the end of this report](#)

## SURVEILLANCE AND HEALTH STATUS ASSESSMENT

### Public Health Surveillance

Report Date: February 8, 2011

An influenza report targeted to the general public is available at: <http://www.health.alberta.ca/health-info/influenza-evidence.html>

## SECTION 5: ZONE 4 – EDMONTON

[Back to first page](#)

### Summary

The trends for respiratory virus activity indicators over the last several weeks show steady activity in Edmonton Zone. The number of laboratory confirmed RSV cases has been particularly high and is continuing to increase.

### Laboratory Data (see [Figure 5A](#), [Figure 5B](#), [Figure 5C](#), [Table 5A](#) & [Table 5B](#))

RSV activity continues to increase in Edmonton Zone. This season, there have been a total of 142 influenza cases confirmed in the Edmonton Zone. At this point in the season, the age-specific rates for infants 0 to less than 2 years of age and for adults aged 75 years and over are higher compared to other age groups, at 8.0 per 10,000 and 5.2 per 10,000, respectively. Most of the cases in these two age groups have been influenza A (H3); 70.8% in infants 0 to less than 2 years of age and 93.5% in those aged 75 years and over.

### Outbreaks (see [Figure 5D](#))

Since last week's update, one outbreak in an Edmonton Zone child care facility (with an onset date of Jan 17, 2011) was confirmed and attributed to RSV. This outbreak had an attack rate of 5%. Another outbreak has been reported for a long term care facility (onset date of Feb 1, 2011 and a preliminary attack rate of 4%). This outbreak is currently pending laboratory confirmation.

### Health Link Alberta Calls (see [Figure 5E](#))

The number of calls to Health Link Alberta by residents of Edmonton Zone for cough or breathing difficulties was 4% higher in Week 5 (Jan 30-Feb 5, 2011) compared to the previous week, returning to the same level as in Week 3.

### Emergency Department/Urgent Care Center Visits and Hospital Admissions (See [Figure 5F](#))

The number of visits and hospital admissions of patients with ILI symptoms at the nine emergency departments/urgent care centers in Edmonton Zone increased by 9% and 15%, respectively, in Week 5 (Jan 30-Feb 5, 2011) from Week 4. The percentage of ILI related visits is around 6% of all visits screened for ILI symptoms.

Compared to Week 4, the number of visits and hospital admissions of patients with cough/congestion symptoms increased by 3% and 67%, respectively, at the nine emergency departments/urgent care centers in Edmonton Zone in Week 5. The percentage of visits with cough/congestion symptoms remained at approximately 4%.

### Sentinel Physician Office Visits

The combined percentage of ILI and LRTI related visits to sentinel physician offices by residents of Edmonton Zone was 34% higher in Week 4 (Jan 23-29, 2011) than in Week 3, as LRTI related visits had a 67% increase compared to Week 3.

## SURVEILLANCE AND HEALTH STATUS ASSESSMENT

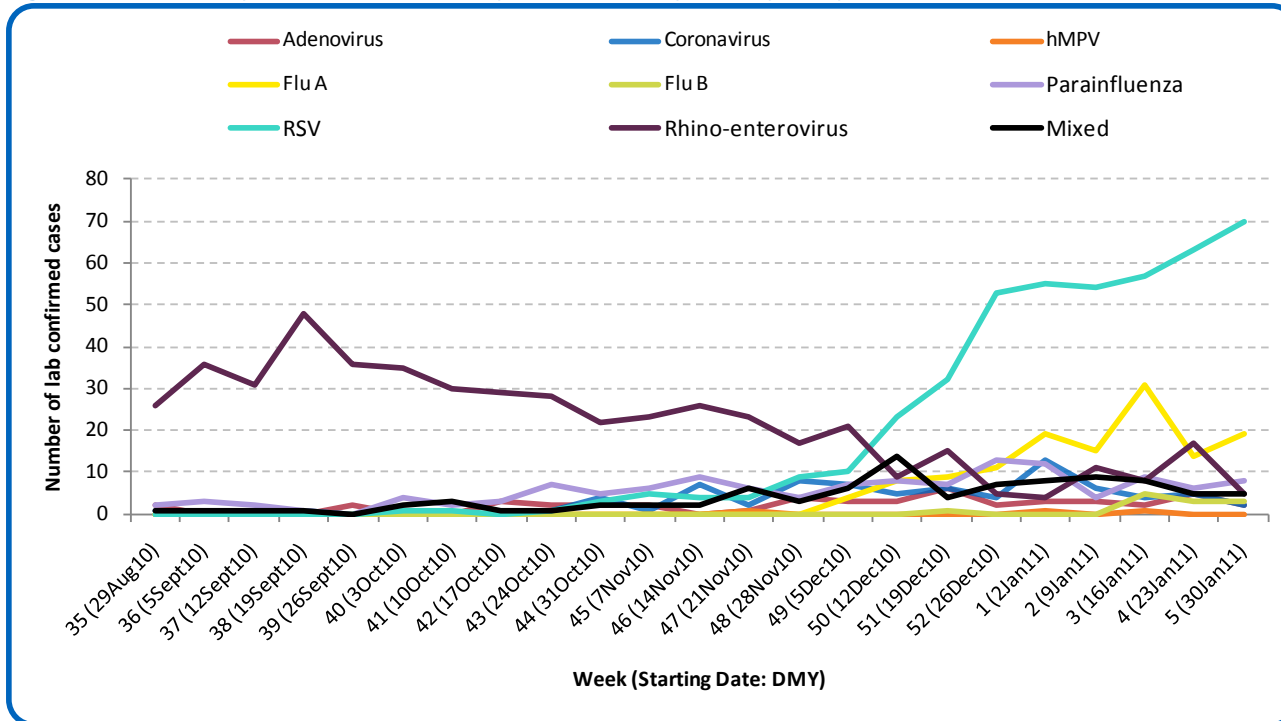
### Public Health Surveillance

Report Date: February 8, 2011

An influenza report targeted to the general public is available at: <http://www.health.alberta.ca/health-info/influenza-evidence.html>

[Back to start of section](#)

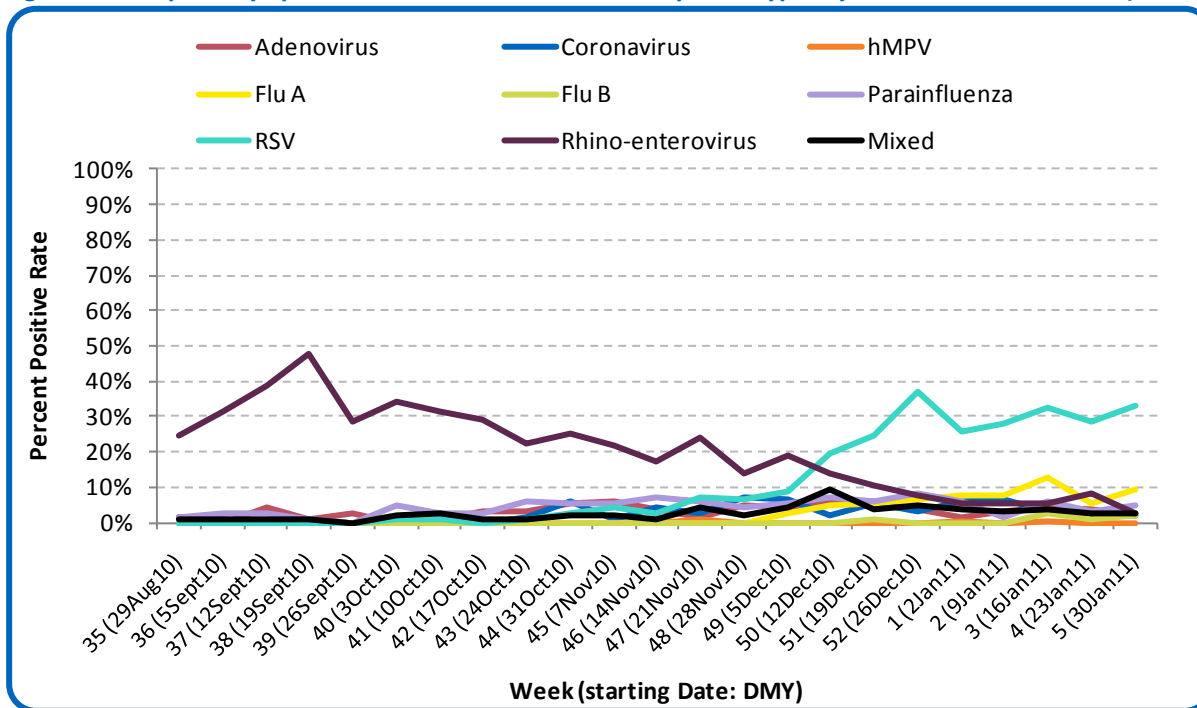
Figure 5A: Laboratory confirmed respiratory virus cases, by virus type, by week, Edmonton Zone (2010-2011)



Sources: DIAL – Provincial Laboratory and the Outbreak Response Toolkit (includes cases with positive respiratory specimens received on or before Feb 5, 2011). For more information on data definitions and sources see [Annex: Data Notes section at the end of this report](#)

[Back to start of section](#)

Figure 5B: Respiratory Specimen Percent Positive Rates, by virus type, by week, Edmonton Zone (2010-2011)



Source: DIAL – Provincial Laboratory (includes cases with positive respiratory specimens received on or before Feb 5, 2011)  
For more information on data definitions and sources see [Annex: Data Notes section at the end of this report](#)

SURVEILLANCE AND HEALTH STATUS ASSESSMENT

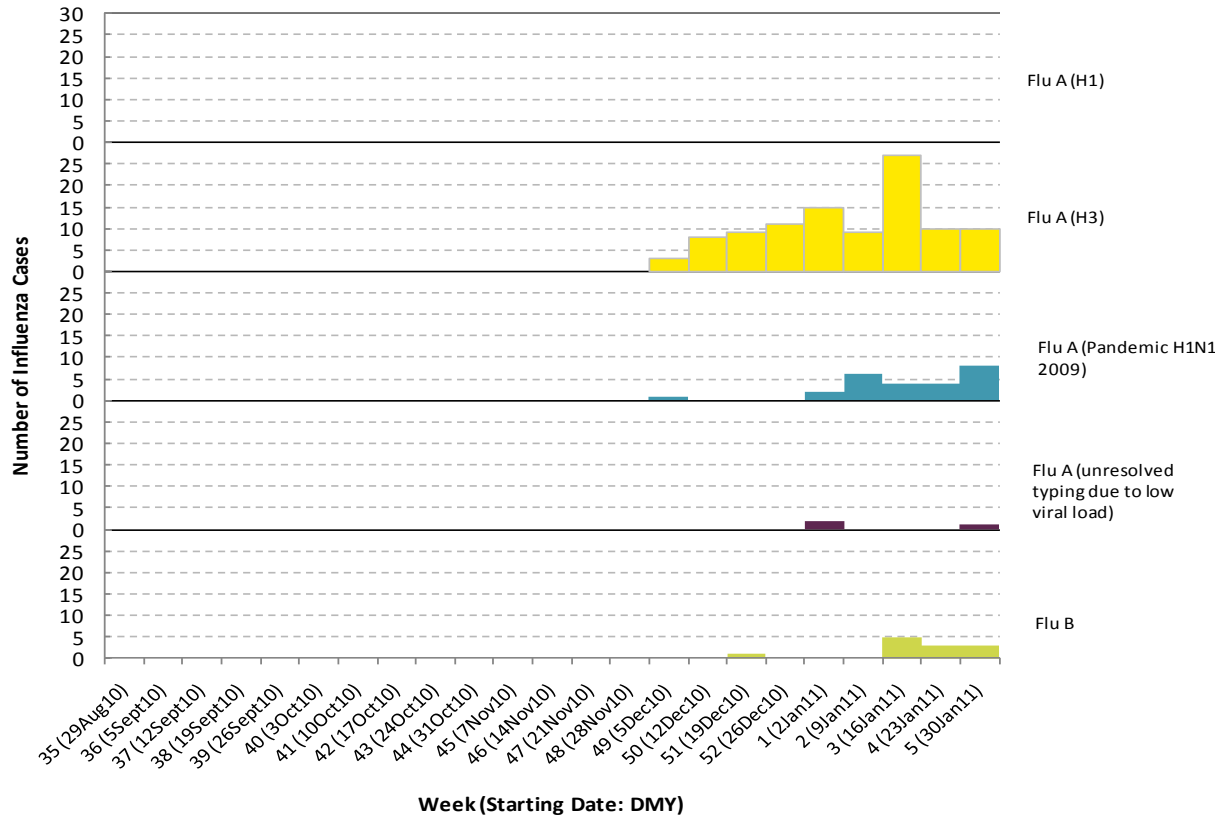
Public Health Surveillance

Report Date: February 8, 2011

An influenza report targeted to the general public is available at: <http://www.health.alberta.ca/health-info/influenza-evidence.html>

[Back to start of section](#)

Figure 5C: Laboratory confirmed Influenza cases, by subtype, by week specimen received, Edmonton Zone (2010-2011)



\*Note: 3 specimens were positive for influenza A or B and one or more other virus type(s). These cases have been included in the influenza counts, as well as the other respective specimen type(s). They have not been included in the 'Mixed' category.

Source: Outbreak Response Toolkit (includes cases with positive respiratory specimens received on or before Feb 5, 2011).

For more information on data definitions and sources see [Annex: Data Notes section at the end of this report](#)

SURVEILLANCE AND HEALTH STATUS ASSESSMENT

Public Health Surveillance

Report Date: February 8, 2011

An influenza report targeted to the general public is available at: <http://www.health.alberta.ca/health-info/influenza-evidence.html>

[Back to start of section](#)

**Table 5A: New Influenza cases (and age specific rates), by subtype, by age group, Edmonton Zone (Week 5: Jan 30-Feb 5, 2011)**

	Flu A (Seasonal-H1)		Flu A (Seasonal-H3)		Flu A (Pandemic H1N1 2009)		Flu A (unresolved typing due to low viral load)		Flu B		Total	
	#	Rate (per 10,000)	#	Rate (per 10,000)	#	Rate (per 10,000)	#	Rate (per 10,000)	#	Rate (per 10,000)	#	Rate (per 10,000)
0 to <2 years	0	0.0	3	1.0	0	0.0	0	0.0	1	0.3	4	1.3
2 to <5 years	0	0.0	1	0.2	0	0.0	1	0.2	0	0.0	2	0.5
5 to <9 years	0	0.0	0	0.0	1	0.2	0	0.0	1	0.2	2	0.4
9 to <18 years	0	0.0	0	0.0	0	0.0	0	0.0	0	0.0	0	0.0
18 to <65 years	0	0.0	5	0.1	7	0.1	0	0.0	0	0.0	12	0.2
65 to <75 years	0	0.0	0	0.0	0	0.0	0	0.0	0	0.0	0	0.0
75+ years	0	0.0	1	0.2	0	0.0	0	0.0	1	0.2	2	0.3
<b>Total</b>	0	0.0	10	0.1	8	0.1	1	<0.1	3	<0.1	22	0.2

**Table 5B: Cumulative Influenza cases (and age specific rates), by subtype, by age group, Edmonton Zone (Aug 29, 2010 – Feb 5, 2011)**

	Flu A (Seasonal-H1)		Flu A (Seasonal-H3)		Flu A (Pandemic H1N1 2009)		Flu A (unresolved typing due to low viral load)		Flu B		Total	
	#	Rate (per 10,000)	#	Rate (per 10,000)	#	Rate (per 10,000)	#	Rate (per 10,000)	#	Rate (per 10,000)	#	Rate (per 10,000)
0 to <2 years	0	0.0	17	5.6	3	1.0	1	0.3	3	1.0	24	8.0
2 to <5 years	0	0.0	8	1.9	1	0.2	1	0.2	1	0.2	11	2.7
5 to <9 years	0	0.0	2	0.4	3	0.6	0	0.0	1	0.2	6	1.2
9 to <18 years	0	0.0	3	0.2	1	0.1	0	0.0	6	0.5	10	0.8
18 to <65 years	0	0.0	37	0.5	17	0.2	0	0.0	0	0.0	54	0.7
65 to <75 years	0	0.0	6	0.9	0	0.0	0	0.0	0	0.0	6	0.9
75+ years	0	0.0	29	4.9	0	0.0	1	0.2	1	0.2	31	5.2
<b>Total</b>	0	0.0	102	0.9	25	0.2	3	<0.1	12	0.1	142	1.3

Source for tables 5A & 5B: Outbreak Response Toolkit (includes cases with positive respiratory specimens received on or before Feb 5, 2011).

Population data values used to calculate rates are for June 30, 2009 and are estimated using actual population values from the Alberta Health Care Insurance Plan (AHCIP) Registration File as of March 31, 2009.

For more information on data definitions and sources see [Annex: Data Notes section at the end of this report](#)

## SURVEILLANCE AND HEALTH STATUS ASSESSMENT

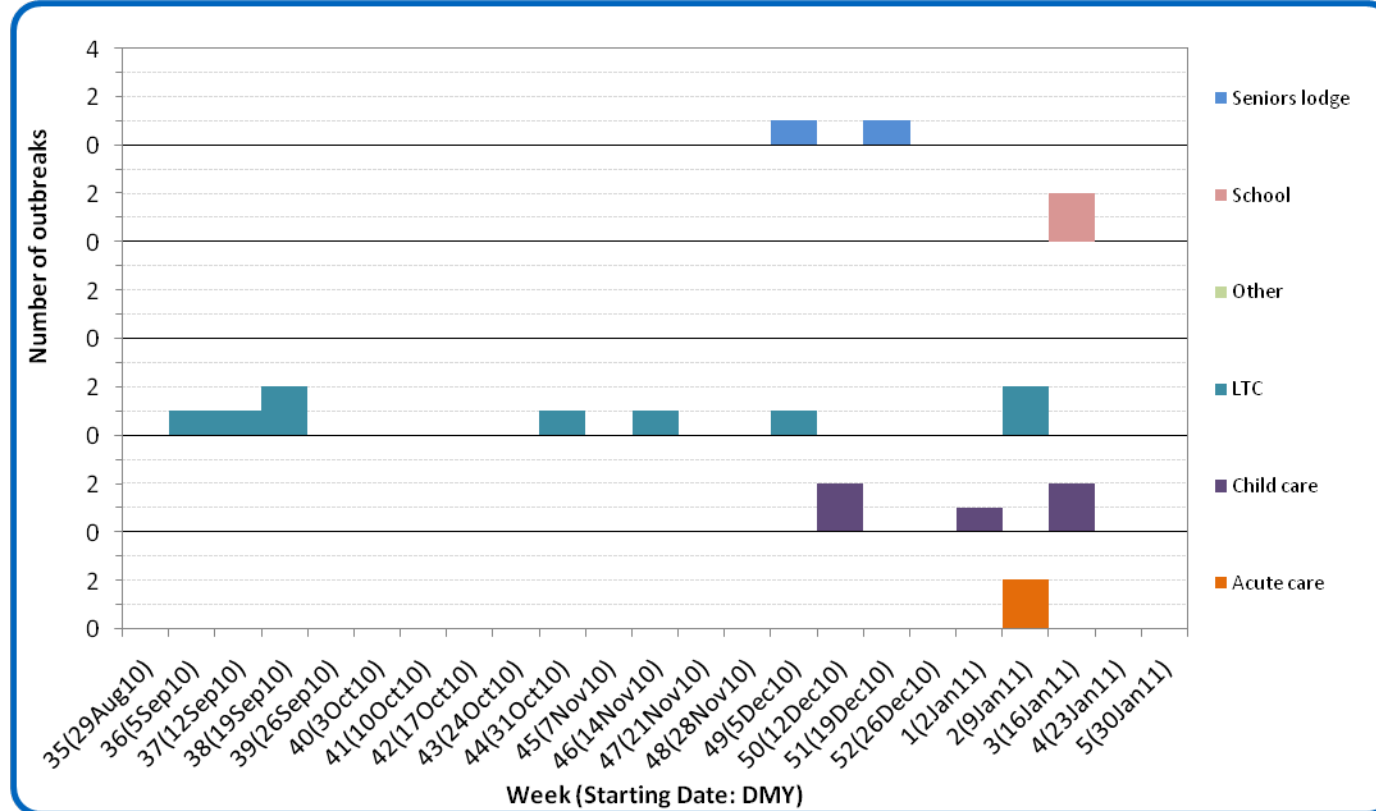
### Public Health Surveillance

Report Date: February 8, 2011

An influenza report targeted to the general public is available at: <http://www.health.alberta.ca/health-info/influenza-evidence.html>

[Back to start of section](#)

Figure 5D: Respiratory outbreaks, by facility type, by onset week, Edmonton Zone (2010-2011; school outbreaks may not have a laboratory confirmation)



Source: Alberta Outbreak Reporting Form as of 23:59 on Feb 5, 2011. LTC stands for long term care facility. For more information on data definitions and sources see [Annex: Data Notes section at the end of this report](#)

**SURVEILLANCE AND HEALTH STATUS ASSESSMENT**

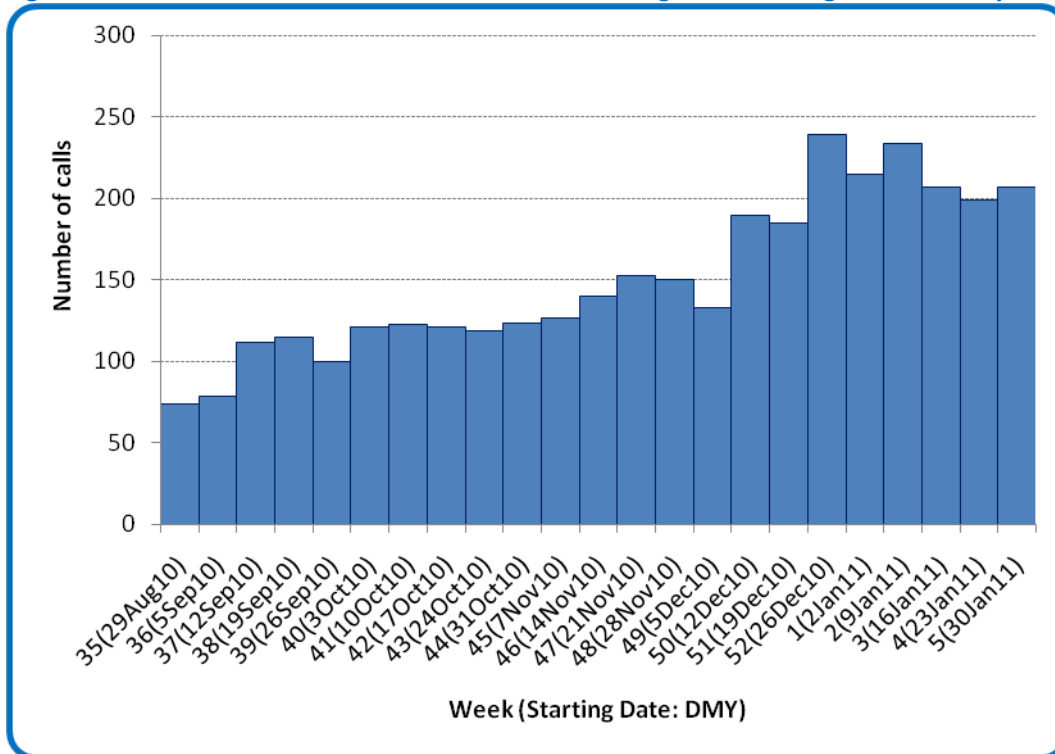
**Public Health Surveillance**

Report Date: February 8, 2011

An influenza report targeted to the general public is available at: <http://www.health.alberta.ca/health-info/influenza-evidence.html>

[Back to start of section](#)

Figure 5E: Number of calls to Health Link Alberta for cough or breathing difficulties, by week, Edmonton Zone (2010-11)



Source: Sharp Focus - Health Link Alberta - via Alberta Real Time Syndromic Surveillance Net (ARTSSN) as of 23:59 on Feb 5, 2011. For more information on data definitions and sources see [Annex: Data Notes section at the end of this report](#)

**SURVEILLANCE AND HEALTH STATUS ASSESSMENT**

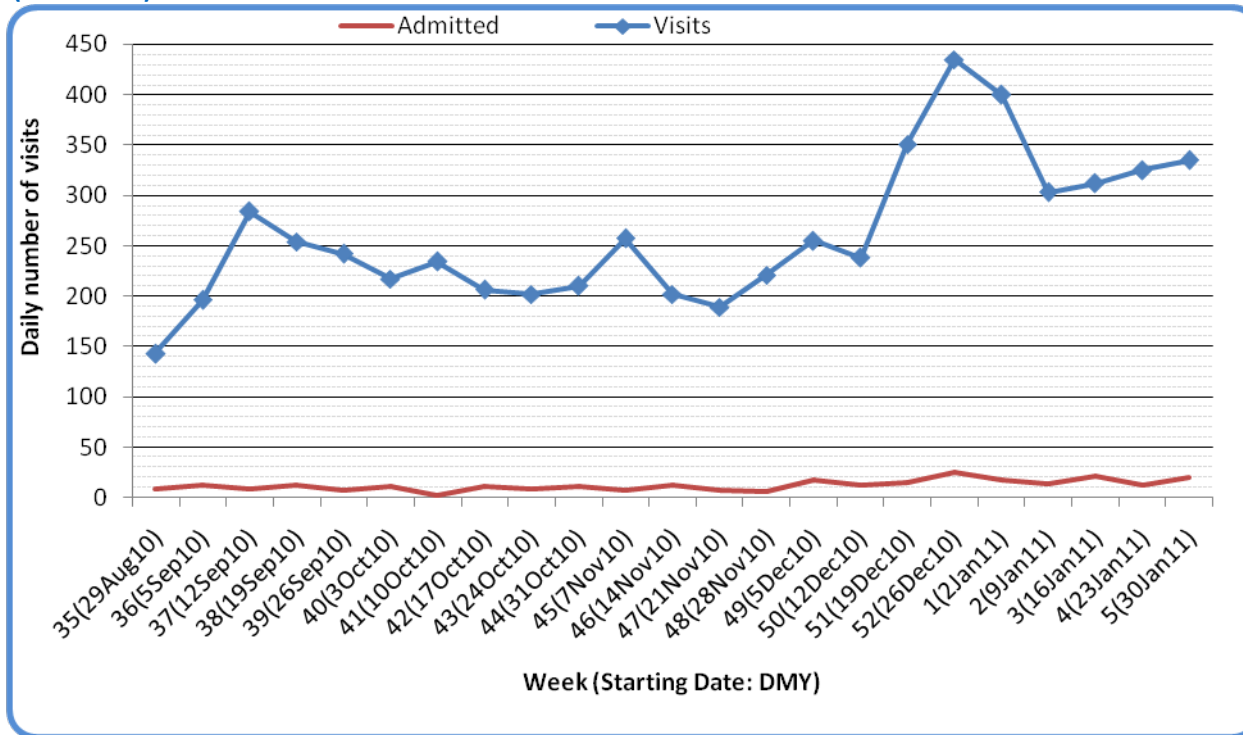
**Public Health Surveillance**

Report Date: February 8, 2011

An influenza report targeted to the general public is available at: <http://www.health.alberta.ca/health-info/influenza-evidence.html>

[Back to start of section](#)

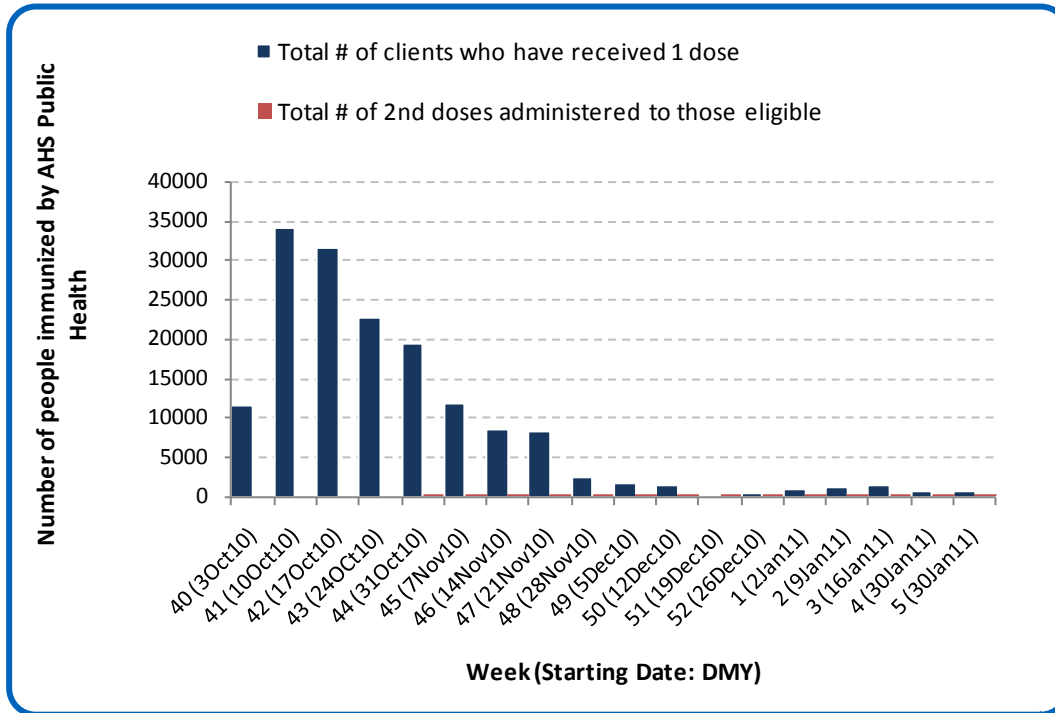
Figure 5F: Visits to emergency departments/urgent care centers for cough/congestion and admissions to hospitals, Edmonton Zone, by visit week (2010-2011)



Source: Alberta Real Time Syndromic Surveillance (ARTSSN) as of 23:59 on Feb 5, 2011.  
For more information on data definitions and sources see [Annex: Data Notes section at the end of this report](#)

[Back to start of section](#)

Figure 5G: Number Immunized by AHS (Public Health), by week, Edmonton Zone (2010-2011)



Source: AHS Zones (doses do not include those delivered by external providers)  
 Note: Immunization coverage rates will be reported at the end of the influenza season  
 For more information on data definitions and sources see [Annex: Data Notes section at the end of this report](#)

**SURVEILLANCE AND HEALTH STATUS ASSESSMENT**

**Public Health Surveillance**

Report Date: February 8, 2011

An influenza report targeted to the general public is available at: <http://www.health.alberta.ca/health-info/influenza-evidence.html>

[Back to start of section](#)

**Table 5C: AHS (Public Health) Delivered Influenza Immunizations (with Cumulative totals), by priority group, Edmonton Zone (2010-2011)**

Priority Group	Number Immunized (Week 5 – Jan 30-Feb 5, 2011)	Cumulative Number Immunized (since Oct 3, 2010)
Long term care staff	0	321
Health care workers	20	4,775
Pregnant women	18	1,407
Residents of long term care	8	1,047
65 years of age and over	50	48,414
All children 6 months up to and including 23 months*	Dose #1	128
	Dose #2	72
All children 24 months up to and including 59 months*	Dose #1	52
	Dose #2	13
High risk: 5 years up to and including 8 years*	Dose #1	15
	Dose #2	0
High risk: 9 years up to and including 64 years	43	17,045
Healthy: 5 years up to and including 8 years*	Dose #1	22
	Dose #2	3
Healthy: 9 years up to and including 64 years	323	67,151
<b>Total number of clients who have received 1 dose</b>	<b>679</b>	<b>160,166</b>
<b>Total number of 2nd doses administered to those eligible*</b>	<b>88</b>	<b>2,407</b>

Source: AHS Zones (doses do not include those delivered by external providers)

\*Children under 9 years of age who have not received at least one dose of seasonal influenza vaccine in past years require two doses, given at least four weeks apart.

Note: Immunization coverage rates will be reported at the end of the influenza season

For more information on data definitions and sources see [Annex: Data Notes section at the end of this report](#)

## SURVEILLANCE AND HEALTH STATUS ASSESSMENT

### Public Health Surveillance

Report Date: February 8, 2011

An influenza report targeted to the general public is available at: <http://www.health.alberta.ca/health-info/influenza-evidence.html>

## SECTION 6: ZONE 5 – NORTH

[Back to first page](#)

### Summary

Although there has been only one respiratory outbreak reported in North Zone this season, respiratory virus activity appears to be increasing. The number of laboratory confirmed respiratory virus cases (particularly RSV), the number calls made to Health Link Alberta for cough/breathing difficulties and the number visits to sentinel physicians offices related to lower respiratory tract infections (LRTI) or influenza-like-illness (ILI) have all been increasing.

### Laboratory Data (see [Figure 6A](#), [Figure 6B](#), [Figure 6C](#), [Table 6A](#) & [Table 6B](#))

The number of laboratory confirmed RSV cases continues to increase in North Zone. As well, the number of confirmed influenza cases in North Zone this season is 43. At this point in the season, the age specific rate of confirmed influenza in North Zone is higher than the rate for any other age group (10.9 per 10,000 compared to 1.7 or less per 10,000). Unlike other areas of the province, only half (53.3%) of the cases in this age group have been influenza A(H3) – 40% have been influenza A (H1N1) 2009.

### Outbreaks (see [Figure 6D](#))

There have been no laboratory confirmed respiratory outbreaks reported in North Zone since the week of Aug 29, 2010.

### Health Link Alberta Calls (see [Figure 6E](#))

The number of calls to Health Link Alberta in the North Zone for cough or breathing difficulties was similar in Week 5 (Jan 30-Feb 5, 2011) compared to the previous week. This indicator is currently at the highest level it has been at this season.

### Emergency Department/Urgent Care Center Visits and Hospital Admissions

There are no data available for the North Zone.

### Sentinel Physician Office Visits

The combined percentage of ILI and LRTI related visits to sentinel physician offices by residents of North Zone was 3x higher in Week 4 (Jan 23-29, 2011) compared to Week 3 (18.5% vs 6.1%). This indicator is currently the highest it has been this season.

## SURVEILLANCE AND HEALTH STATUS ASSESSMENT

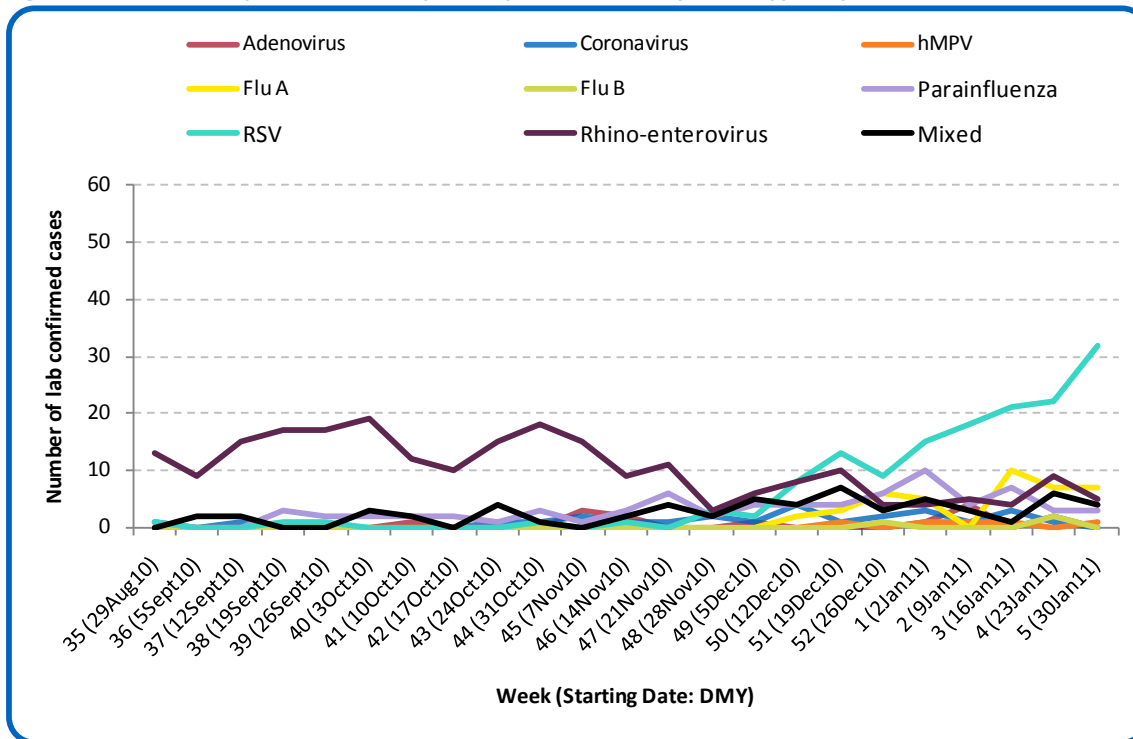
### Public Health Surveillance

Report Date: February 8, 2011

An influenza report targeted to the general public is available at: <http://www.health.alberta.ca/health-info/influenza-evidence.html>

[Back to start of section](#)

Figure 6A: Laboratory confirmed respiratory virus cases, by virus type, by week, North Zone (2010-2011)



Sources: DIAL – Provincial Laboratory and the Outbreak Response Toolkit (includes cases with positive respiratory specimens received on or before Feb 5, 2011). For more information on data definitions and sources see [Annex: Data Notes section at the end of this report](#)

SURVEILLANCE AND HEALTH STATUS ASSESSMENT

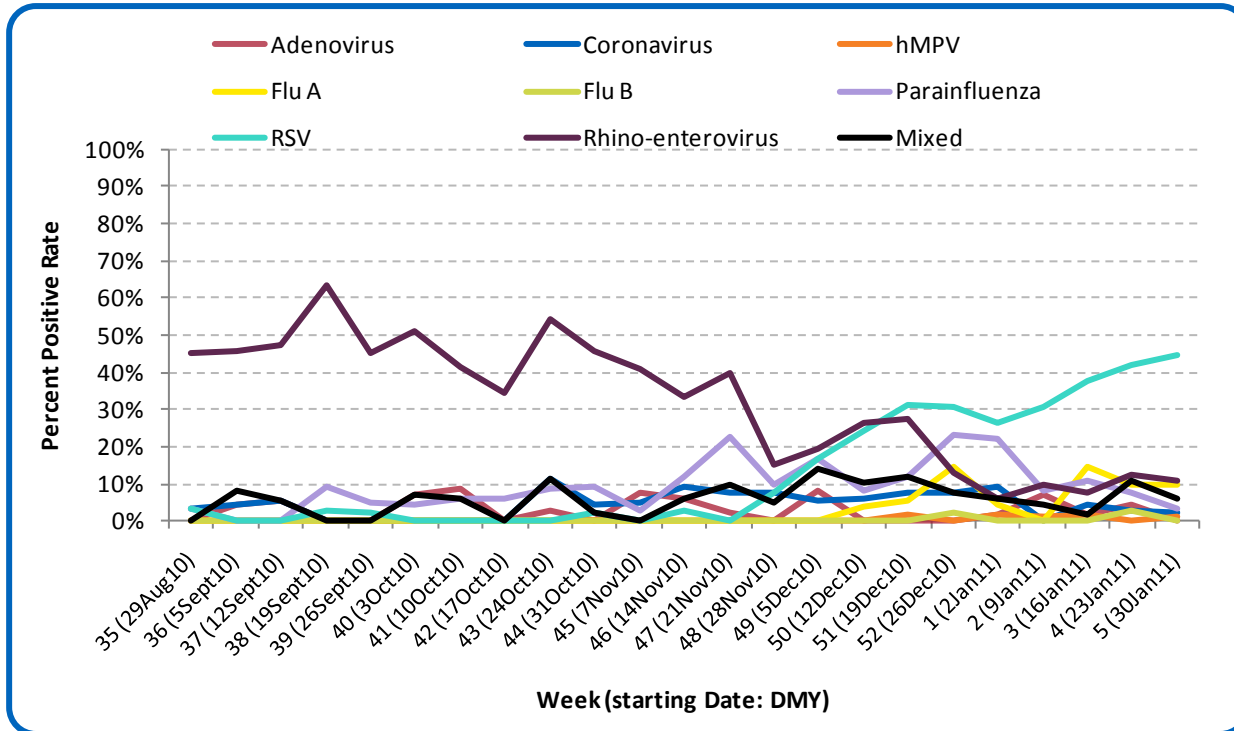
Public Health Surveillance

Report Date: February 8, 2011

An influenza report targeted to the general public is available at: <http://www.health.alberta.ca/health-info/influenza-evidence.html>

[Back to start of section](#)

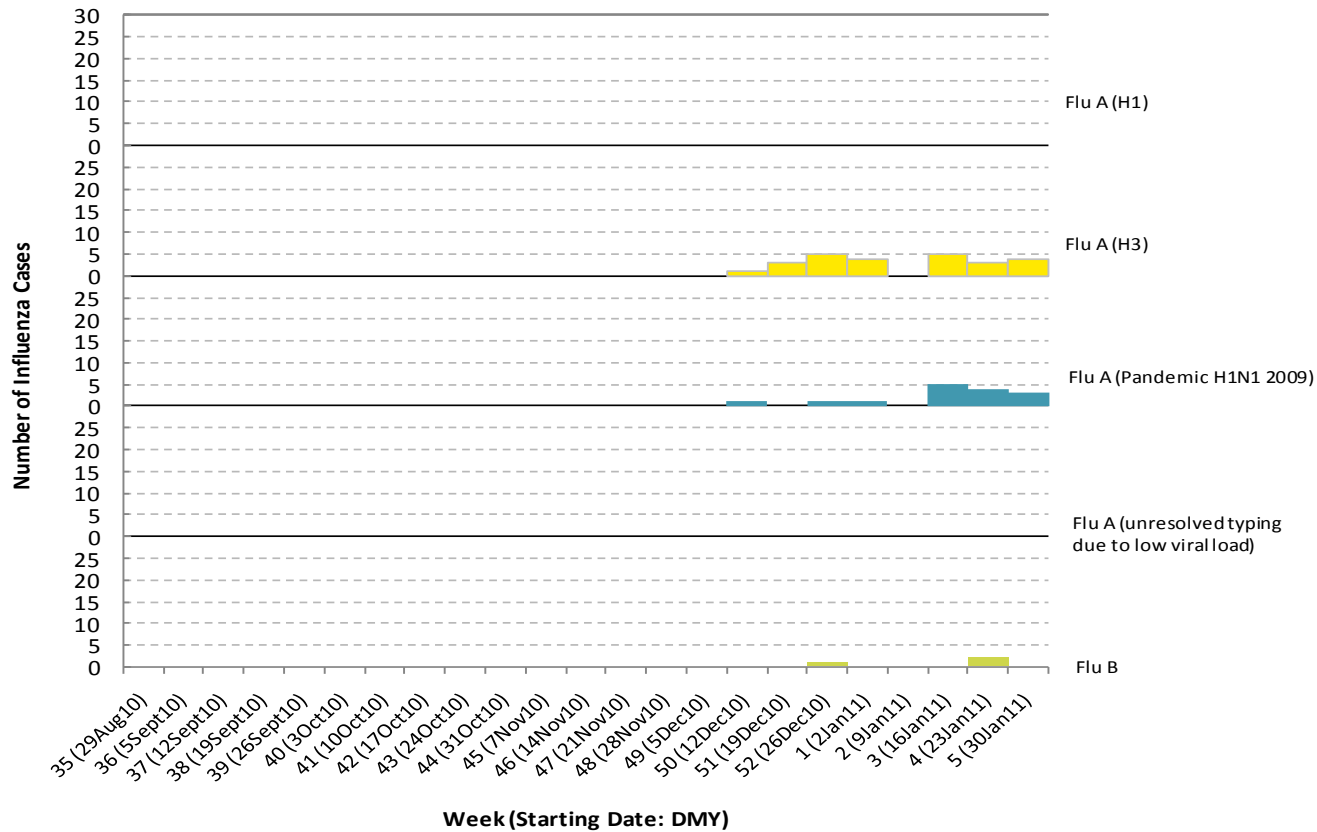
Figure 6B: Respiratory Specimen Percent Positive Rates, by virus type, by week, North Zone (2010-2011)



Source: DIAL – Provincial Laboratory (includes cases with positive respiratory specimens received on or before Feb 5, 2011)  
For more information on data definitions and sources see [Annex: Data Notes section at the end of this report](#)

[Back to start of section](#)

Figure 6C: Laboratory confirmed Influenza cases, by subtype, by week specimen received, North Zone (2010-2011)



\*Note: 4 specimens were positive for influenza A or B and one or more other virus type(s). These cases have been included in the influenza counts, as well as the other respective specimen type(s). They have not been included in the 'Mixed' category.

Source: Outbreak Response Toolkit (includes cases with positive respiratory specimens received on or before Feb 5, 2011).

For more information on data definitions and sources see [Annex: Data Notes section at the end of this report](#)

**SURVEILLANCE AND HEALTH STATUS ASSESSMENT**

**Public Health Surveillance**

Report Date: February 8, 2011

An influenza report targeted to the general public is available at: <http://www.health.alberta.ca/health-info/influenza-evidence.html>

[Back to start of section](#)

**Table 6A: New Influenza cases (and age specific rates), by subtype, by age group, North (Week 5: Jan 30-Feb 5, 2011)**

	Flu A (Seasonal-H1)		Flu A (Seasonal-H3)		Flu A (Pandemic H1N1 2009)		Flu A (unresolved typing due to low viral load)		Flu B		Total	
	#	Rate (per 10,000)	#	Rate (per 10,000)	#	Rate (per 10,000)	#	Rate (per 10,000)	#	Rate (per 10,000)	#	Rate (per 10,000)
0 to <2 years	0	0.0	2	1.4	2	1.4	0	0.0	0	0.0	4	2.9
2 to <5 years	0	0.0	1	0.5	0	0.0	0	0.0	0	0.0	1	0.5
5 to <9 years	0	0.0	1	0.4	1	0.4	0	0.0	0	0.0	2	0.8
9 to <18 years	0	0.0	0	0.0	0	0.0	0	0.0	0	0.0	0	0.0
18 to <65 years	0	0.0	0	0.0	0	0.0	0	0.0	0	0.0	0	0.0
65 to <75 years	0	0.0	0	0.0	0	0.0	0	0.0	0	0.0	0	0.0
75+ years	0	0.0	0	0.0	0	0.0	0	0.0	0	0.0	0	0.0
<b>Total</b>	<b>0</b>	<b>0.0</b>	<b>4</b>	<b>0.1</b>	<b>3</b>	<b>0.1</b>	<b>0</b>	<b>0.0</b>	<b>0</b>	<b>0.0</b>	<b>7</b>	<b>0.2</b>

**Table 6B: Cumulative Influenza cases (and age specific rates), by subtype, by age group, North Zone (Aug 29, 2010-Feb 5, 2011)**

	Flu A (Seasonal-H1)		Flu A (Seasonal-H3)		Flu A (Pandemic H1N1 2009)		Flu A (unresolved typing due to low viral load)		Flu B		Total	
	#	Rate (per 10,000)	#	Rate (per 10,000)	#	Rate (per 10,000)	#	Rate (per 10,000)	#	Rate (per 10,000)	#	Rate (per 10,000)
0 to <2 years	0	0.0	8	5.8	6	4.3	0	0.0	1	0.7	15	10.9
2 to <5 years	0	0.0	2	1.0	0	0.0	0	0.0	1	0.5	3	1.6
5 to <9 years	0	0.0	2	0.8	2	0.8	0	0.0	0	0.0	4	1.7
9 to <18 years	0	0.0	3	0.5	3	0.5	0	0.0	0	0.0	6	1.1
18 to <65 years	0	0.0	9	0.3	4	0.1	0	0.0	1	0.0	14	0.5
65 to <75 years	0	0.0	0	0.0	0	0.0	0	0.0	0	0.0	0	0.0
75+ years	0	0.0	1	0.6	0	0.0	0	0.0	0	0.0	1	0.6
<b>Total</b>	<b>0</b>	<b>0.0</b>	<b>25</b>	<b>0.6</b>	<b>15</b>	<b>0.4</b>	<b>0</b>	<b>0.0</b>	<b>3</b>	<b>0.1</b>	<b>43</b>	<b>1.0</b>

Source for Tables 6A & 6B: Outbreak Response Toolkit (includes cases with positive respiratory specimens received on or before Feb 5, 2011).

Population data values used to calculate rates are for June 30, 2009 and are estimated using actual population values from the Alberta Health Care Insurance Plan (AHCIP) Registration File as of March 31, 2009.

For more information on data definitions and sources see [Annex: Data Notes section at the end of this report](#)

## SURVEILLANCE AND HEALTH STATUS ASSESSMENT

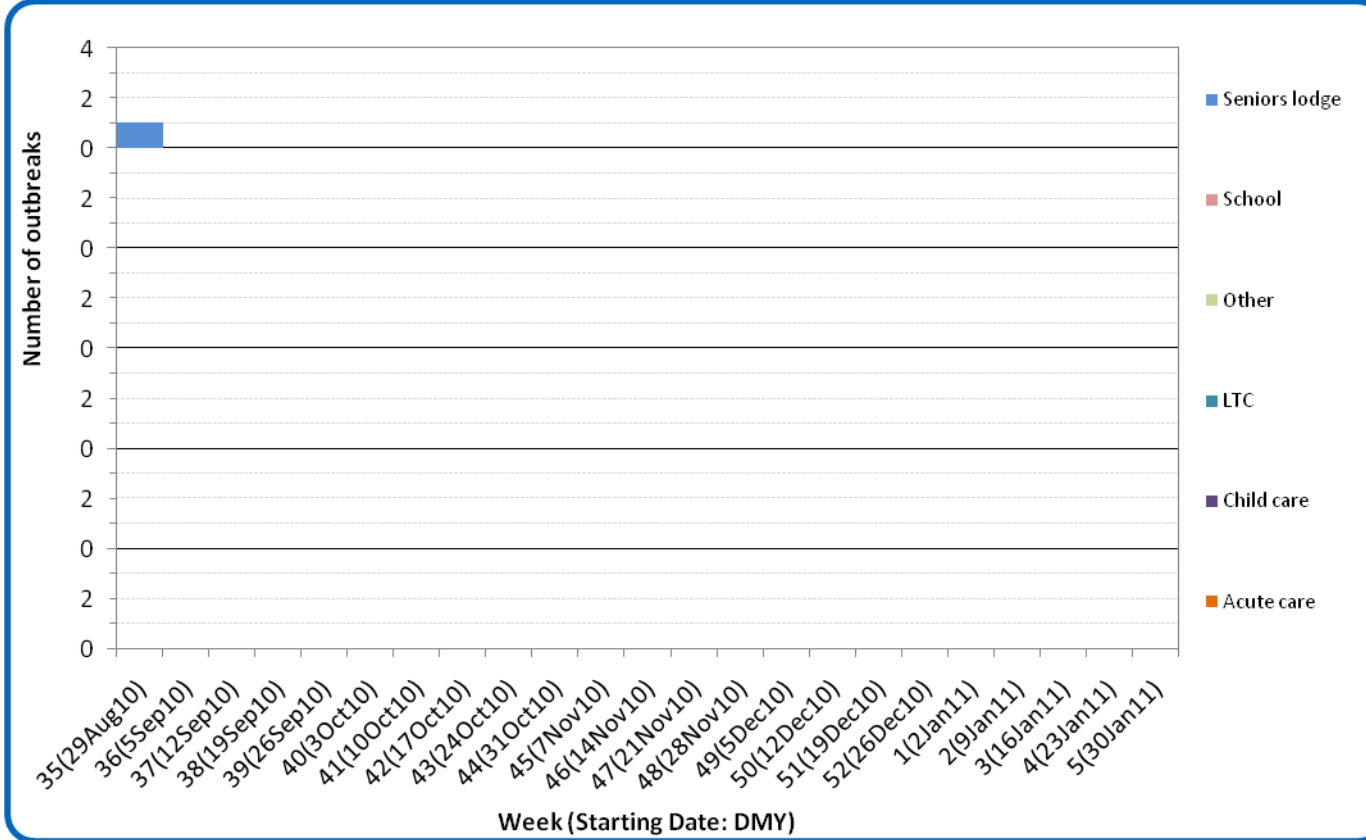
### Public Health Surveillance

Report Date: February 8, 2011

An influenza report targeted to the general public is available at: <http://www.health.alberta.ca/health-info/influenza-evidence.html>

[Back to start of section](#)

Figure 6D: Respiratory outbreaks, by facility type, by onset week, North Zone (2010-2011; school outbreaks may not have a laboratory confirmation)



Source: Alberta Outbreak Reporting Form as of 23:59 on Feb 5, 2011. LTC stands for long term care facility. For more information on data definitions and sources see [Annex: Data Notes section at the end of this report](#)

**SURVEILLANCE AND HEALTH STATUS ASSESSMENT**

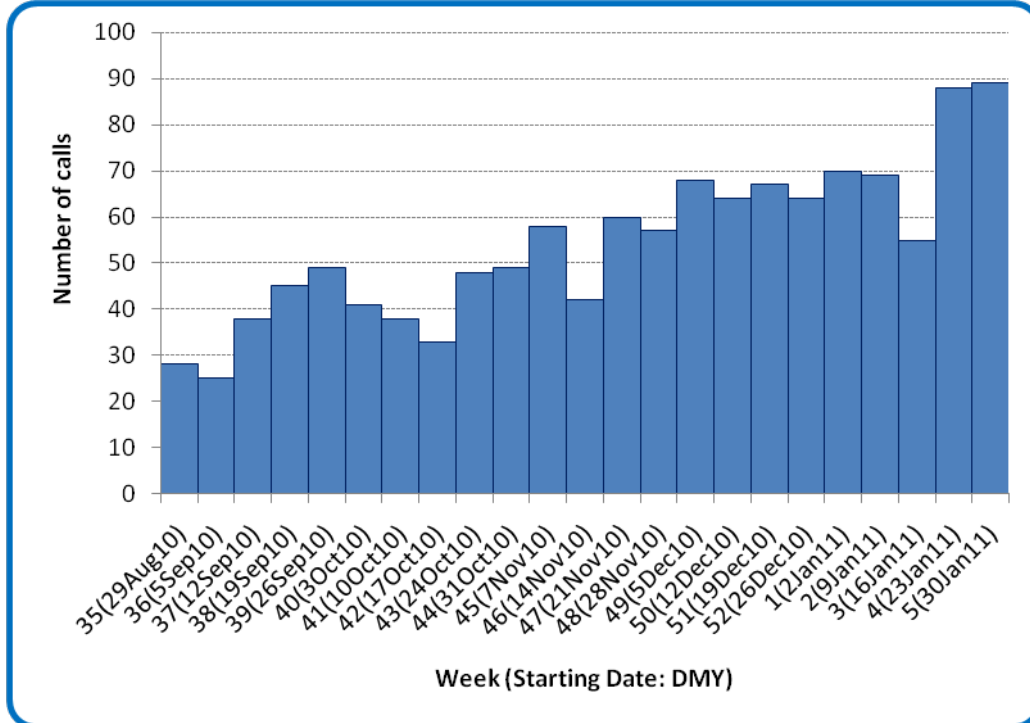
**Public Health Surveillance**

Report Date: February 8, 2011

An influenza report targeted to the general public is available at: <http://www.health.alberta.ca/health-info/influenza-evidence.html>

[Back to start of section](#)

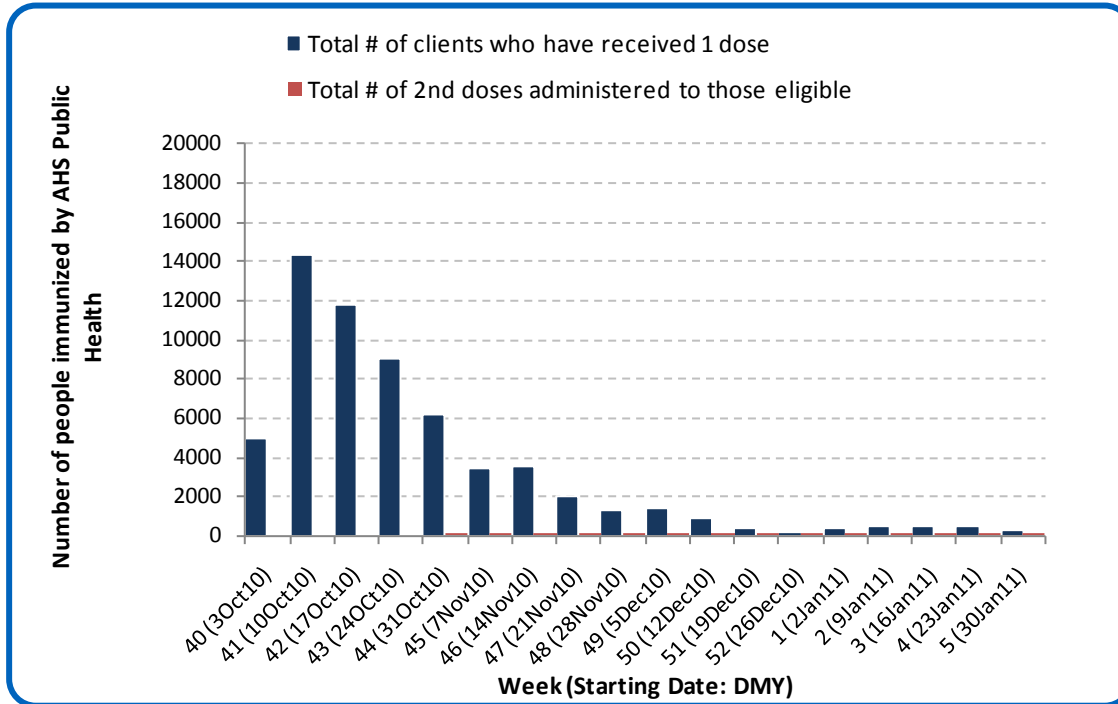
Figure 6E: Number of calls to Health Link Alberta for cough or breathing difficulties, by week, North Zone (2010-11)



Source: Sharp Focus - Health Link Alberta - via Alberta Real Time Syndromic Surveillance Net (ARTSSN) as of 23:59 on Feb 5, 2011. For more information on data definitions and sources see [Annex: Data Notes section at the end of this report](#)

[Back to start of section](#)

Figure 6F: Number Immunized by AHS (Public Health), by week, North Zone (2010-2011)



Source: AHS Zones (doses do not include those delivered by external providers)  
 Note: Immunization coverage rates will be reported at the end of the influenza season  
 For more information on data definitions and sources see [Annex: Data Notes section at the end of this report](#)

**SURVEILLANCE AND HEALTH STATUS ASSESSMENT**

**Public Health Surveillance**

Report Date: February 8, 2011

An influenza report targeted to the general public is available at: <http://www.health.alberta.ca/health-info/influenza-evidence.html>

[Back to start of section](#)

**Table 6C: AHS (Public Health) Delivered Influenza Immunizations (with Cumulative totals), by priority group, North Zone (2010-2011)**

Priority Group	# Immunized (Week 5 – Jan 30-Feb 5, 2011)	Cumulative Number Immunized (since Oct 3, 2010)
Long term care staff	3	811
Health care workers	9	4,668
Pregnant women	5	556
Residents of long term care	0	1,248
65 years of age and over	20	15,747
All children 6 months up to and including 23 months*	Dose #1	2,233
	Dose #2	702
All children 24 months up to and including 59 months*	Dose #1	2,487
	Dose #2	118
High risk: 5 years up to and including 8 years*	Dose #1	928
	Dose #2	10
High risk: 9 years up to and including 64 years	34	7,718
Healthy: 5 years up to and including 8 years*	Dose #1	2,423
	Dose #2	53
Healthy: 9 years up to and including 64 years	142	23,096
<b>Total number of clients who have received 1 dose</b>	<b>316</b>	<b>61,915</b>
<b>Total number of 2nd doses administered to those eligible*</b>	<b>37</b>	<b>883</b>

Source: AHS Zones (doses do not include those delivered by external providers)

\*Children under 9 years of age who have not received at least one dose of seasonal influenza vaccine in past years require two doses, given at least four weeks apart.

Note: Immunization coverage rates will be reported at the end of the influenza season

For more information on data definitions and sources see [Annex: Data Notes section at the end of this report](#)

## SURVEILLANCE AND HEALTH STATUS ASSESSMENT

### Public Health Surveillance

Report Date: February 8, 2011

An influenza report targeted to the general public is available at: <http://www.health.alberta.ca/health-info/influenza-evidence.html>

## ANNEX: DATA NOTES

[Back to first page](#)

### LABORATORY

Information on laboratory confirmed respiratory virus activity in Alberta is based on data from 2 sources:

- 1) Non-influenza viruses: The Alberta Provincial Public Health Laboratory DIAL system (Data Integration for Alberta Laboratories) – a specimen based system. Cases are determined by rationalizing samples from the same patient with the same virus identified within a 30-day period. The information (i.e. received date) from the first sample identifying the identical virus is used in this report.
- 2) Influenza viruses: The Alberta influenza Case Management System – an influenza case based system.

Both data sources are web-based applications supported by the Canadian Network for Public Health Intelligence.

The data in this report are based on specimens obtained from residents of Alberta; according to the date the specimen was received by the laboratory.

Definition for “mixed” – a single sample where multiple viral organisms were isolated.

### INFLUENZA-LIKE ILLNESS

Four data sources are used to provide information on utilization of primary and acute care services by people with Influenza-Like Illness (ILI). *Caution: Each source uses potentially different definitions of ILI.*

1. Primary care summaries are obtained from the TARRANT system. Patients seen by TARRANT physicians may not be representative of the general population. Reported ILI cases represent people seen by TARRANT physicians, according to the date seen by the physician. The percentage of ILI represents the proportion of patients with ILI of all patients seen by the physician.
2. In addition to reporting visits of patients with ILI, TARRANT physicians also report visits with lower respiratory tract infections (LRTI). Each visit is recorded only once, even if a patient has symptoms consistent with ILI and LRTI. The combined ILI- and LRTI-related visits are therefore suggestive of overall respiratory infections in the patient population.
3. Information on visits for ILI in Emergency Departments (ED) and urgent care centers are provided by the Alberta Real Time Syndromic Surveillance Net (ARTSSN) data repository. ILI designation is based on patients being screened in emergency departments with an ILI screening tool. The primary purpose of the ILI screening tool is to implement appropriate infection control measures. The original data sources fed to the ARTSSN data repository are EDIS (Emergency Department Information System) for the Edmonton Zone and REDIS for the Calgary Zone.
4. Health Link Alberta is a 24 hour a day, 7 day a week nurse telephone advice and health information service that provides the public with advice and information about health symptoms and concerns. The original data source for the daily calls to Health Link Alberta for ILI, cough, and breathing difficulties is the Health Link database called Sharp Focus.

## SURVEILLANCE AND HEALTH STATUS ASSESSMENT

### Public Health Surveillance

Report Date: February 8, 2011

An influenza report targeted to the general public is available at: <http://www.health.alberta.ca/health-info/influenza-evidence.html>

## OUTBREAKS

[Back to first page](#)

Upon notification of an outbreak, the *Alberta Health & Wellness/Alberta Health Services* Outbreak Reporting Form (Fillable PDF) is completed by Zone Public Health investigators and sent to *Alberta Health & Wellness and AHS Public Health Surveillance*. The form includes information about the type and location of the outbreak, type of facility, and the causative organism (confirmed or suspected). There may be a delay between the reporting of an outbreak and the identification of the organism. This report includes only those outbreaks that are laboratory confirmed and caused by influenza-like illness viruses; outbreaks that are caused by bacteria (i.e. pertussis, invasive pneumococcal disease) and other types of viruses (i.e. measles, rubella (German measles), chickenpox) are excluded. Also excluded are those outbreaks that have no causative agent identified by the Provincial Laboratory for Public Health or where specimens are not tested or an outbreak with only one infected (confirmed or probable) case during a 7 day period. This follows the same approach of PHAC FluWatch for defining ILI/influenza outbreak. The naming convention of outbreak facilities by FluWatch - "Hospital and residential institutions" - is also adopted. Outbreaks in schools are officially counted in tables or graphs whether there is or not a laboratory confirmation; outbreaks in hospital and residential institutions that are pending for laboratory confirmation are described for information only but not officially presented in graphs or tables in this report.

## INFLUENZA IMMUNIZATIONS

Influenza immunization data are reported by AHS zones. Numbers are available to the Public Health Surveillance team at the beginning of the week for the doses administered the previous week (Sunday to Saturday). It includes those doses administered by AHS (Public Health) only. Clients can only exist in one priority group. Immunization coverage rates will be reported at the end of March, 2011.

## POPULATION NUMBERS

Population data values used to calculate rates are for June 30, 2009 and are estimated using actual population values from the Alberta Health Care Insurance Plan (AHCIP) Registration File as of March 31, 2009. The following registrants are included: residents of Alberta; 'residents' of Alberta temporarily living elsewhere, such as extended visits or vacations or students attending an educational institute outside of Alberta, or Albertans temporarily (up to four years) working outside Alberta; persons during the first three months after they move from Alberta to another Canadian province; dependants of members of the RCMP and Armed Forces; persons from another country who are working or studying in Alberta on valid visas; and Natives/Aboriginals whose premiums are paid by Health Canada, First Nations and Inuit Health Branch. Not included are: members of the Armed Forces and RCMP; inmates at federal penitentiaries; persons from other provinces during their first three months in Alberta; and persons who have not registered for eligibility, or have opted out.

Slight differences between values provided at this level of aggregation and data provided at other levels of aggregation may occur because of round-off error. Population values are subject to change without notice when new source data is received.

## SURVEILLANCE AND HEALTH STATUS ASSESSMENT

### Public Health Surveillance

Report Date: February 8, 2011

An influenza report targeted to the general public is available at: <http://www.health.alberta.ca/health-info/influenza-evidence.html>