

Weekly Report

March 1, 2011

The purpose of this report is to inform Public Health staff, primary care providers, acute care staff and other community practitioners about recent respiratory virus activity in the province of Alberta. Unless otherwise noted, all data presented are current as of the Saturday prior to the day the report is released.

To navigate to certain sections of the report or to visit other relevant websites, use the Quick Links below

[Alberta Snapshot](#)

[Section 1: Alberta](#)

[Section 2: Zone 1 - South](#)

[Section 3: Zone 2 - Calgary](#)

[Section 4: Zone 3 - Central](#)

[Section 5: Zone 4 - Edmonton](#)

[Section 6: Zone 5 - North](#)

[Annex: Data Notes](#)

[Current Global Information](#)

[FluWatch \(PHAC\)](#)

[FluView \(US CDC\)](#)

[HPA \(UK\)](#)

[WHO](#)

[Travel Advisories](#)

What's New?

- Influenza transmission appears to have peaked in much of Western Europe, although severe and fatal cases continue to be reported. The epidemiologic profile of severe cases in Europe is similar to that seen during the 2009-2010 influenza season. Most are unvaccinated individuals with underlying health conditions between the ages of 15-64 years of age. Influenza A (H1N1) 2009 continues to be over-represented in severe cases.
- In contrast to Europe, influenza activity is still increasing in parts of North America. Although the predominant influenza virus is still influenza A (H3N2), the proportions of influenza A (H1N1) 2009 and influenza type B have been recently increasing. The majority of the viruses characterized in Europe and North America are closely related to those included in the current seasonal vaccine, although small numbers of influenza type B of the Yamagata lineage continue to be reported.
- Australia and the tropical parts of Asia are reporting low levels of influenza transmission, while the tropical areas of the Americas are reporting sporadic detections.
- In the United States, influenza-like-illness (ILI) activity remains elevated and many states are reporting widespread influenza transmission. Similar to other parts of the world, the proportion of influenza type B among all influenza viruses detected continues to rise.
- In Canada, influenza activity continues to increase, particularly in Quebec and the Atlantic provinces. The national consultation rates for ILI have increased recently however are within the expected range when compared to previous influenza seasons. Influenza A (H3N2) continues to be the predominant influenza virus however the proportions of influenza type B and influenza A (H1N1) 2009 detected are increasing. In contrast to Europe, 65% of the fatal cases in Canada this season have occurred in those over the age of 65 years. This contrast is likely due to the difference in the predominant viruses circulating. Among the fatal cases reported across the country, influenza A (H3N2) was identified in 65%, unsubtype influenza A in 27%, pandemic (H1N1) 2009 in 6% and influenza B in 2%.
- In Alberta, RSV activity appears to have peaked and is declining in most areas. The number of Influenza B cases confirmed by the laboratory also decreased during that same time period. Overall this season, there has been 699 confirmed cases of influenza in the province, of which 53% have been identified as influenza A (H3), 20% as influenza A (H1N1) 2009, 25% as influenza type B and 2% as influenza A (unsubtyped).
- Since last week's update, one new respiratory outbreak has been reported in Alberta. It occurred in an Edmonton Zone child care facility and was attributed to influenza B.

If you have questions about the Alberta Respiratory Virus Surveillance Update, or any of the indicators, please contact:
AHSPublicHealthSurveillance@albertahealthservices.ca Or phone: 780-342-0210

Alberta Snapshot

[Back to first page](#)

Indicators			Cumulative Counts					Alberta
			Week 35 (starting Aug 29/10) to week 8 (starting Feb 20/11)					
			South	Calgary	Central	Edmonton	North	
Laboratory Confirmed Cases	Number of cases with a positive respiratory specimen ¹	Adenovirus	4	34	8	66	15	127
		Coronavirus	7	52	27	89	34	209
		Human metapneumovirus (hMPV)	8	5	0	10	5	28
		Influenza A	31	157	54	186	99	527
		Influenza B	27	66	10	55	14	172
		Parainfluenza	27	71	45	151	88	382
		Respiratory syncytial virus (RSV)	90	383	145	616	237	1,471
		Rhino enterovirus	94	405	151	558	263	1,471
		Mixed	29	120	45	121	80	395
		Total		317	1,293	485	18,52	835
Outbreaks	# laboratory confirmed respiratory outbreaks ²	0	16	7	28	2	53	
Influenza Immunizations	Total number of clients who have received 1 dose administered by AHS Public Health ³ (cumulative since Oct 3, 2010)	43,041	190,149	61,508	161,124	62,538	518,360	
	The reported number of people who have received 1 dose administered by external providers (Oct 3-Dec 31, 2010) ⁴	17,639	120,408	17,789	62,481	5,075	223,392	

-- Information not available

*Note: 22 specimens were positive for influenza A or B and one or more other virus type(s). These cases have been included in the influenza counts, as well as the other respective specimen type(s). They have not been included in the 'Mixed' category. One specimen was positive for both influenza A & B.

¹ Sources: DIAL – Provincial Laboratory and the Outbreak Response Toolkit (includes cases with positive respiratory specimens received on or before Feb 26, 2011).

² Source: Alberta Health and Wellness Outbreak Reporting Form (Fillable PDF) from All Zones

³ Source: AHS Zones (number does not include doses provided by external providers); includes first doses only for those that require two doses

⁴ In some cases, it was not possible to separate dose 1's from dose 2's.

For more information on data definitions and sources see [Annex: Data Notes section at the end of this report](#)

SURVEILLANCE AND HEALTH STATUS ASSESSMENT

Public Health Surveillance

Report Date: March 1, 2011

An influenza report targeted to the general public is available at: <http://www.health.alberta.ca/health-info/influenza-evidence.html>

SECTION 1: ALBERTA

[Back to first page](#)

Summary

Although RSV activity appears to have peaked and is currently declining, general respiratory virus activity continues to remain at a steady level.

Laboratory Data (see [Figure 1A](#), [Figure 1B](#) & [Figure 1C](#), [Table 1A](#) & [Table 1B](#))

In Alberta, RSV activity appears to have peaked and is declining. For the first time in several weeks, the number of influenza type B cases confirmed decreased last week (Week 8: Feb 20-26) compared to the previous week. The total number of influenza type B cases confirmed in the province this season is 172 (40% have been under the age of 9 years). As of the end of last week (Feb 26, 2011), the total number of confirmed cases of influenza in the province this season is 699 (53.0% influenza A (H3), 20% influenza A (H1N1) 2009, 25% influenza type B, and 2% influenza A with unresolved sub-typing). At this point in the season, the age specific rate for confirmed influenza cases (all types) in infants 0 to <2 years of age is higher than the rate in other age groups, at 10 per 10,000 compared to less than 5 per 10,000 for all other age groups.

Outbreaks (see [Figure 1D](#))

One respiratory outbreak has been confirmed in Alberta since the last report. It occurred in an Edmonton Zone child care facility and was attributed to Influenza B. The attack rate was 21%.

Health Link Alberta Calls (see [Figure 1E](#))

The number of calls to Health Link Alberta for cough or breathing difficulties in Alberta in Week 8 (Feb 20-26, 2011) increased by 1% from Week 7. This indicator continues on an upward trend observed in the most recent 4 weeks and is currently at its second highest level this season.

Emergency Department/Urgent Care Center Visits and Hospital Admissions

The combined number of visits to the emergency departments/urgent care centers (ED's) for influenza-like illness (ILI) in the City of Calgary and the Edmonton Zone increased by 7% in Week 8 (Feb 20-26, 2011) compared to the previous week. The percentage of ED/urgent care visits for ILI is now slightly over 8% of all screened visits, which is the highest level seen this season. The number of hospital admissions however, decreased by 20% during the same period.

The number of ED visits for cough symptoms decreased marginally in Week 8 from Week 7, while the number of hospital admissions for the same reasons decreased by 3%.

Sentinel Physician Office Visits

The combined percentage of ILI- and LRTI-related visits was close to 3% in Week 7 (Feb 13-19, 2011), which is the highest level seen this season. This is also more than 3 times the value observed in Week 6.

SURVEILLANCE AND HEALTH STATUS ASSESSMENT

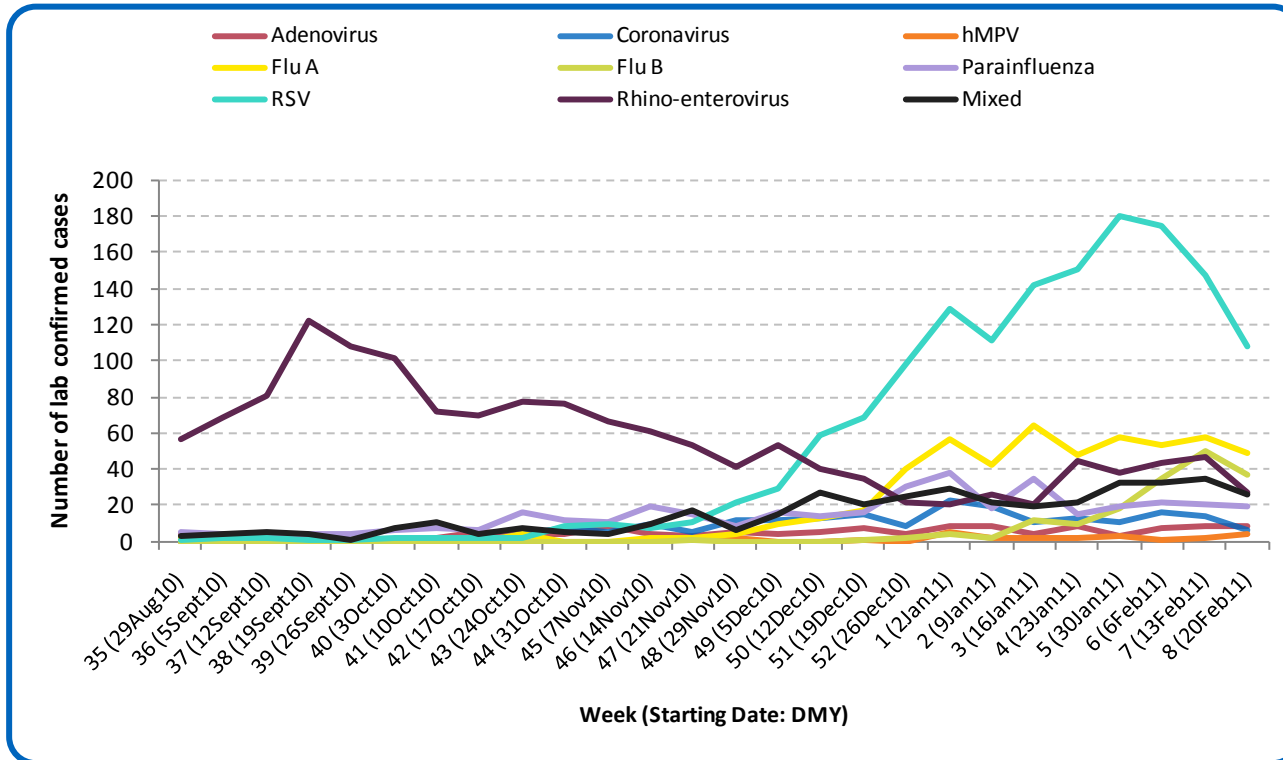
Public Health Surveillance

Report Date: March 1, 2011

An influenza report targeted to the general public is available at: <http://www.health.alberta.ca/health-info/influenza-evidence.html>

[Back to start of section](#)

Figure 1A: Laboratory confirmed respiratory virus cases, by virus type, by week, Alberta (2010-11)



Sources: DIAL – Provincial Laboratory and the Outbreak Response Toolkit (includes cases with positive respiratory specimens received on or before Feb 26, 2011). For more information on data definitions and sources see [Annex: Data Notes section at the end of this report](#)

SURVEILLANCE AND HEALTH STATUS ASSESSMENT

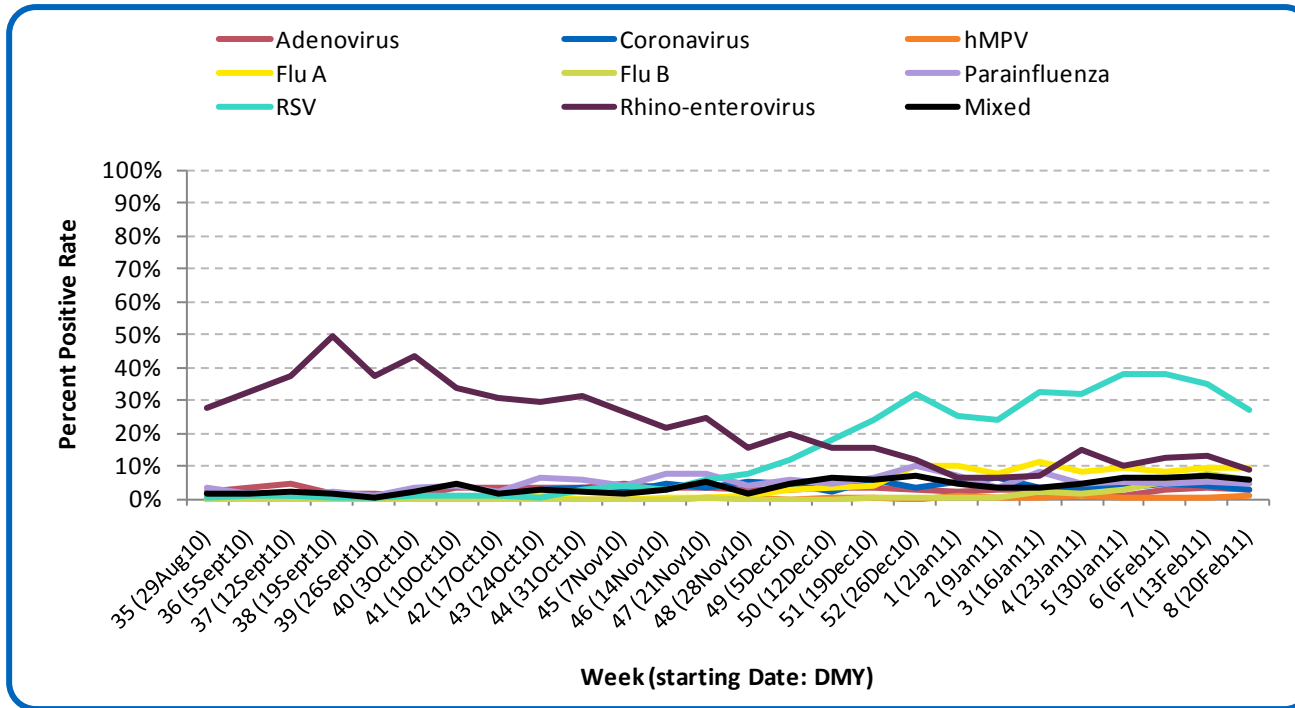
Public Health Surveillance

Report Date: March 1, 2011

An influenza report targeted to the general public is available at: <http://www.health.alberta.ca/health-info/influenza-evidence.html>

[Back to start of section](#)

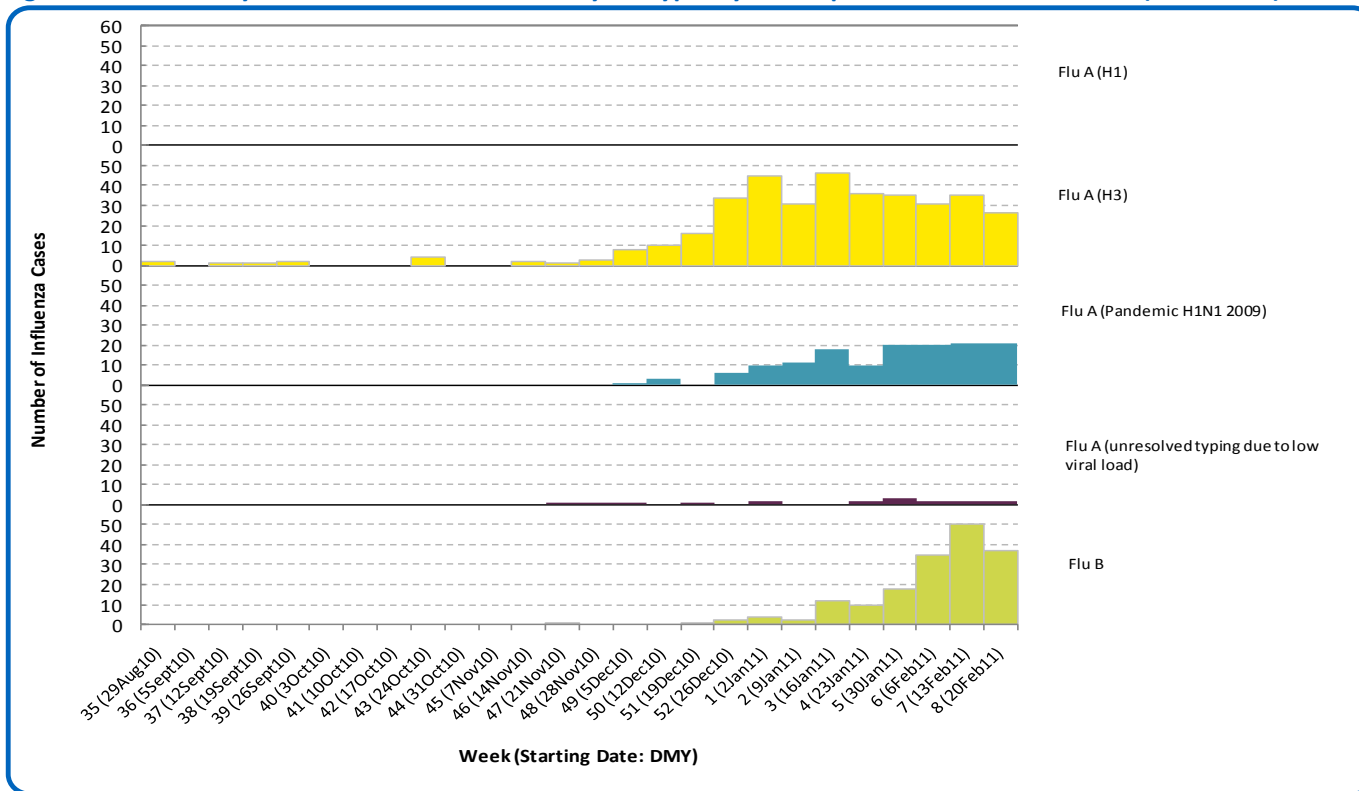
Figure 1B: Respiratory specimen percent positive rates, by virus type, by week, Alberta (2010-11)



Sources: DIAL – Provincial Laboratory (includes cases with positive respiratory specimens received on or before Feb 26, 2011). For more information on data definitions and sources see [Annex: Data Notes section at the end of this report](#)

[Back to start of section](#)

Figure 1C: Laboratory confirmed influenza cases, by subtype, by week specimen received, Alberta (2010-2011)



*Note: 22 specimens were positive for influenza A or B and one or more other virus type(s). One specimen was positive for both influenza A & B. Source: Outbreak Response Toolkit (includes cases with positive respiratory specimens received on or before Feb 26, 2011). For more information on data definitions and sources see [Annex: Data Notes section at the end of this report](#)

SURVEILLANCE AND HEALTH STATUS ASSESSMENT

Public Health Surveillance
Report Date: March 1, 2011

An influenza report targeted to the general public is available at: <http://www.health.alberta.ca/health-info/influenza-evidence.html>

[Back to start of section](#)

Table 1A: New influenza cases (and age specific rates), by subtype, by age group, Alberta (Week 7: Feb 13-19, 2011)

	Flu A (Seasonal-H1)		Flu A (Seasonal-H3)		Flu A (Pandemic H1N1 2009)		Flu A (unresolved typing due to low viral load)		Flu B		Total	
	#	Rate (per 10,000)	#	Rate (per 10,000)	#	Rate (per 10,000)	#	Rate (per 10,000)	#	Rate (per 10,000)	#	Rate (per 10,000)
0 to <2 years	0	0.0	7	0.7	1	0.1	0	0.0	7	0.7	15	1.5
2 to <5 years	0	0.0	1	0.1	3	0.2	0	0.0	5	0.4	9	0.6
5 to <9 years	0	0.0	6	0.3	0	0.0	0	0.0	3	0.2	9	0.5
9 to <18 years	0	0.0	3	0.1	3	0.1	0	0.0	9	0.2	15	0.4
18 to <65 years	0	0.0	9	<0.1	13	0.1	2	<0.1	11	<0.1	35	0.1
65 to <75 years	0	0.0	0	0.0	1	<0.1	0	0.0	1	<0.1	2	0.1
75+ years	0	0.0	0	0.0	0	0.0	0	0.0	1	0.1	1	0.1
Total	0	0.0	26	0.1	21	0.1	2	<0.1	37	0.1	86	0.2

Table 1B: Cumulative influenza cases (and age specific rates), by subtype, by age group, Alberta (Aug 29, 2010 – Feb 26, 2011)

	Flu A (Seasonal-H1)		Flu A (Seasonal-H3)		Flu A (Pandemic H1N1 2009)		Flu A (unresolved typing due to low viral load)		Flu B		Total	
	#	Rate (per 10,000)	#	Rate (per 10,000)	#	Rate (per 10,000)	#	Rate (per 10,000)	#	Rate (per 10,000)	#	Rate (per 10,000)
0 to <2 years	0	0.0	56	5.5	20	2.0	2	0.2	24	2.4	102	10.0
2 to <5 years	0	0.0	31	2.2	9	0.6	2	0.1	21	1.5	63	4.5
5 to <9 years	0	0.0	25	1.4	9	0.5	2	0.1	24	1.4	60	3.4
9 to <18 years	0	0.0	22	0.5	12	0.3	2	<0.1	50	1.2	86	2.1
18 to <65 years	0	0.0	151	0.6	88	0.4	7	<0.1	46	0.2	292	1.2
65 to <75 years	0	0.0	16	0.8	3	0.1	0	0.0	3	0.1	22	1.1
75+ years	0	0.0	68	3.8	0	0.0	2	0.1	4	0.2	74	4.1
Total	0	0.0	369	1.0	141	0.4	17	<0.1	172	0.5	699	1.9

Source for Table 1A & 1B: Outbreak Response Toolkit (includes cases with positive respiratory specimens received on or before Feb 26, 2011).

Population data values used to calculate rates are for June 30, 2009 and are estimated using actual population values from the Alberta Health Care Insurance Plan (AHCIP) Registration File as of March 31, 2009.

For more information on data definitions and sources see [Annex: Data Notes section at the end of this report](#)

SURVEILLANCE AND HEALTH STATUS ASSESSMENT

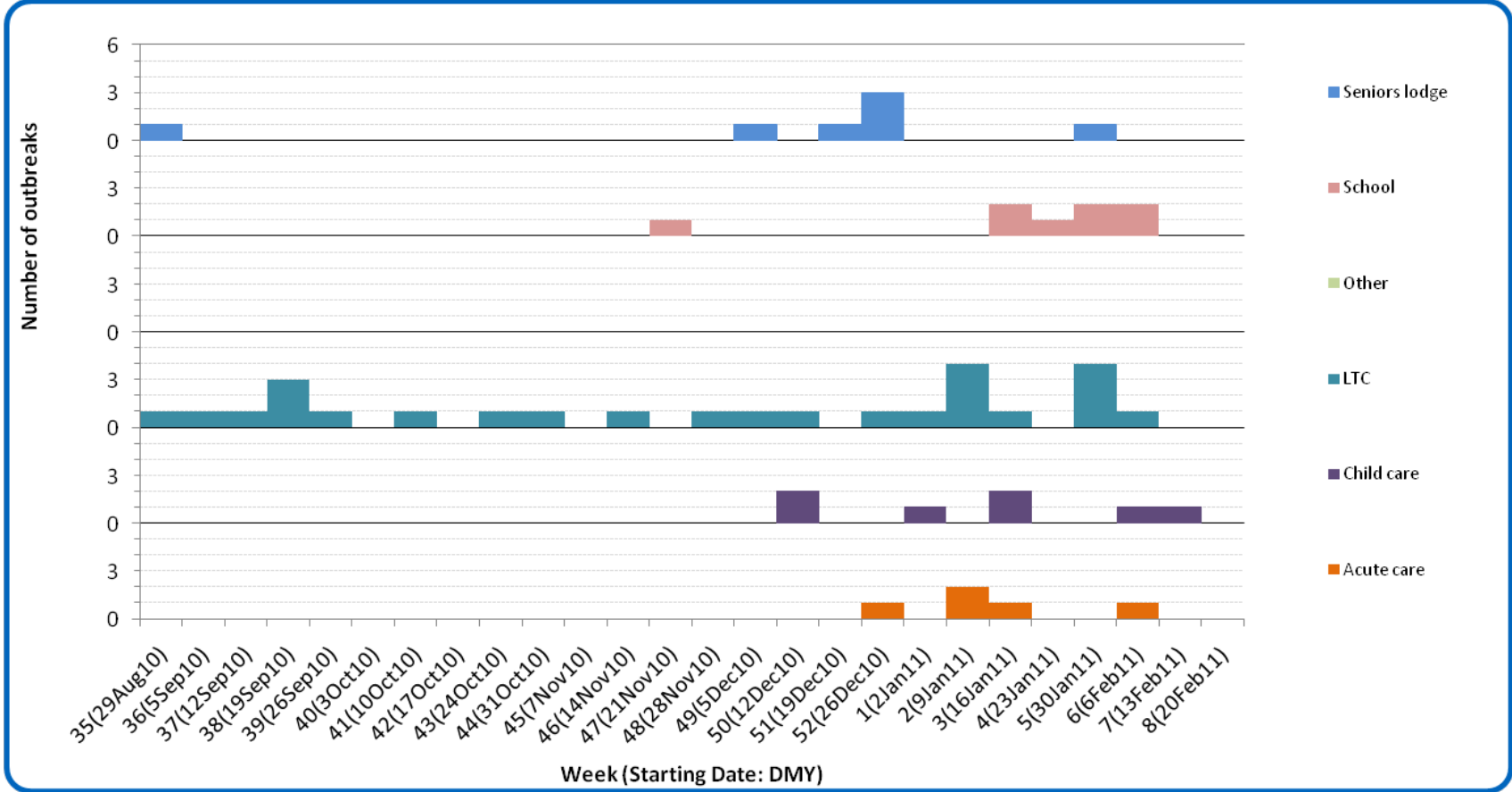
Public Health Surveillance

Report Date: March 1, 2011

An influenza report targeted to the general public is available at: <http://www.health.alberta.ca/health-info/influenza-evidence.html>

[Back to start of section](#)

Figure 1D: Respiratory outbreaks, by facility type, by onset week, Alberta (2010-2011; school outbreaks may not have a laboratory confirmation)



Source: Alberta Outbreak Reporting Form as of 23:59 on Feb 26, 2011. LTC stands for long term care facility. For more information on data definitions and sources see [Annex: Data Notes section at the end of this report](#)

SURVEILLANCE AND HEALTH STATUS ASSESSMENT

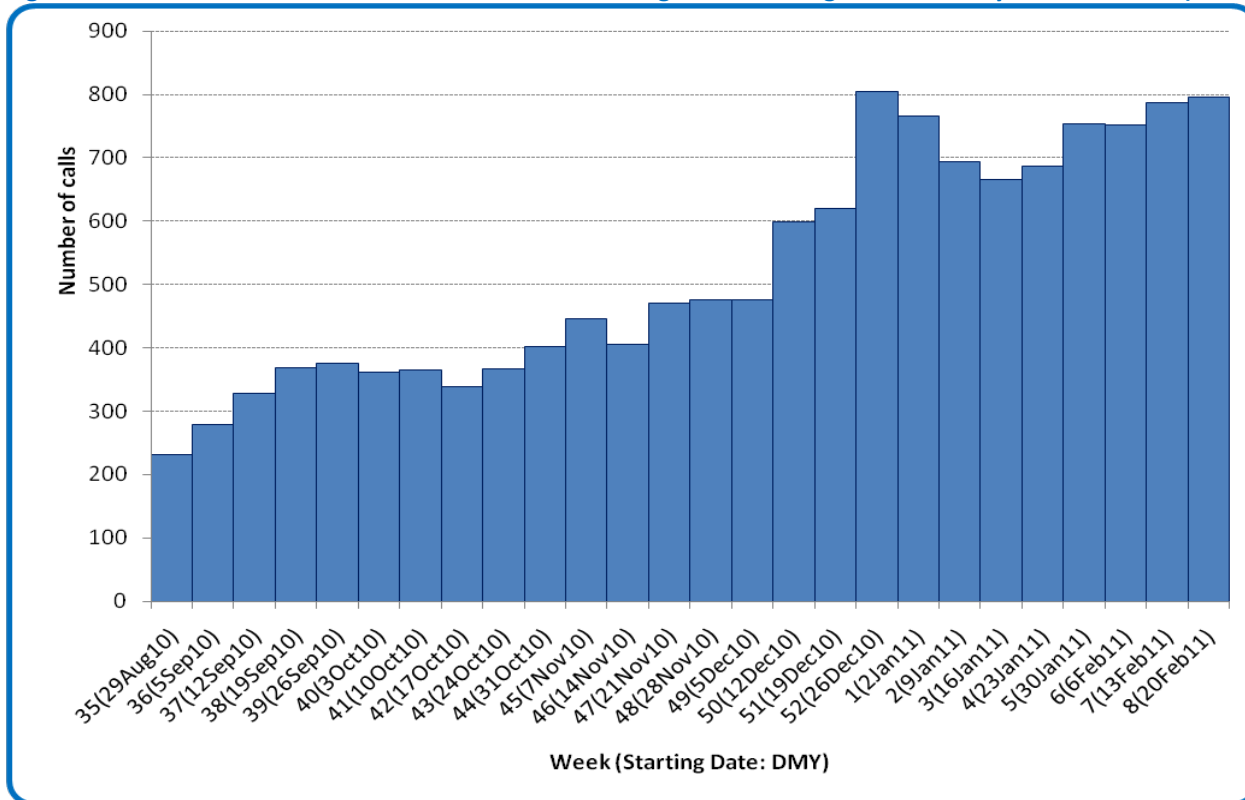
Public Health Surveillance

Report Date: March 1, 2011

An influenza report targeted to the general public is available at: <http://www.health.alberta.ca/health-info/influenza-evidence.html>

[Back to start of section](#)

Figure 1E: Number of calls to Health Link Alberta for cough or breathing difficulties, by week, Alberta (2010-11)



Source: Sharp Focus - Health Link Alberta - via Alberta Real Time Syndromic Surveillance Net (ARTSSN) as of 23:59 on Feb 26, 2011. For more information on data definitions and sources see [Annex: Data Notes section at the end of this report](#)

SURVEILLANCE AND HEALTH STATUS ASSESSMENT

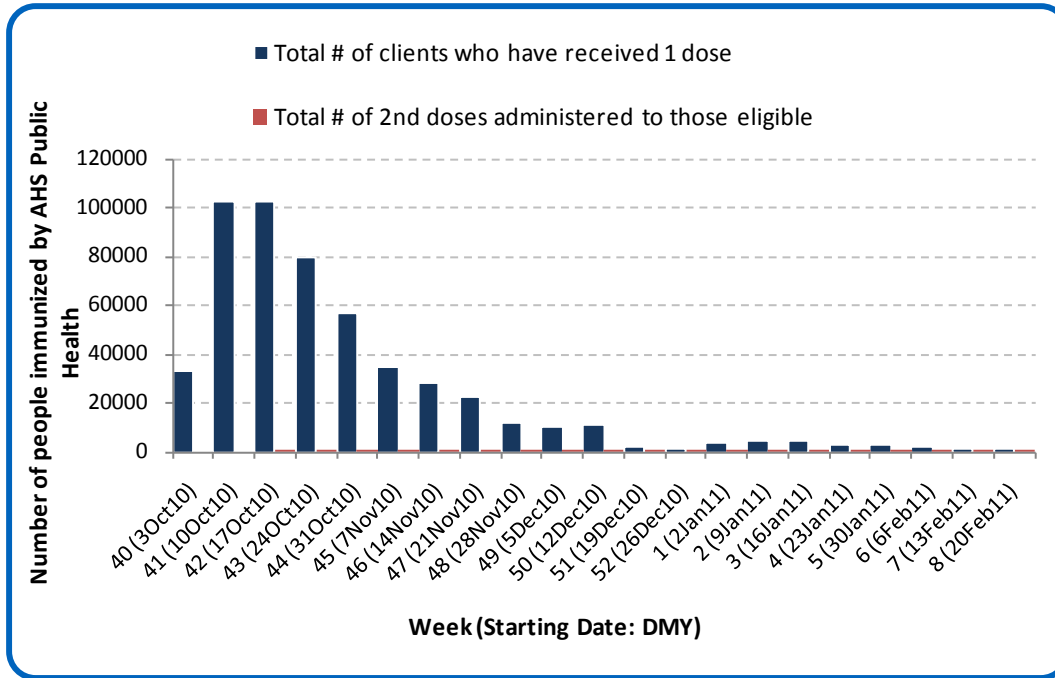
Public Health Surveillance

Report Date: March 1, 2011

An influenza report targeted to the general public is available at: <http://www.health.alberta.ca/health-info/influenza-evidence.html>

[Back to start of section](#)

Figure 1F: Number immunized by AHS (Public Health), by week, Alberta (2010-11)



Source: AHS Zones (doses do not include those delivered by external providers)
 Note: Immunization coverage rates will be reported at the end of the influenza season
 For more information on data definitions and sources see [Annex: Data Notes section at the end of this report](#)

[Back to start of section](#)

Table 1C: AHS (Public Health) delivered influenza immunizations (with cumulative totals), by priority group, Alberta (2010-11)

Priority Group	# Immunized (Week 8 – Feb 20-26, 2011)	Cumulative Number Immunized (since Oct 3, 2010)
Long term care staff	2	2,620
Health care workers	23	18,962
Pregnant women	11	4,679
Residents of long term care	0	4,835
65 years of age and over	23	146,679
All children 6 months up to and including 23 months*	Dose #1	400
	Dose #2	284
All children 24 months up to and including 59 months*	Dose #1	95
	Dose #2	22
High risk: 5 years up to and including 8 years*	Dose #1	23
	Dose #2	4
High risk: 9 years up to and including 64 years	66	55,811
Healthy: 5 years up to and including 8 years*	Dose #1	66
	Dose #2	7
Healthy: 9 years up to and including 64 years	429	209,884
Total number of clients who have received 1 dose	1,138	518,360
Total number of 2nd doses administered to those eligible*	317	9,715

Source: AHS Zones (doses do not include those delivered by external providers)

*Children under 9 years of age who have not received at least one dose of seasonal influenza vaccine in past years require two doses, given at least four weeks apart.

Note: Immunization coverage rates will be reported at the end of the influenza season

For more information on data definitions and sources see [Annex: Data Notes section at the end of this report](#)

SURVEILLANCE AND HEALTH STATUS ASSESSMENT

Public Health Surveillance

Report Date: March 1, 2011

An influenza report targeted to the general public is available at: <http://www.health.alberta.ca/health-info/influenza-evidence.html>

[Back to start of section](#)

Table 1D: Influenza immunizations delivered by external partners, by priority group, Alberta (Oct 3-Dec 31, 2010)

Priority Group	# Immunized Oct 3-Dec 31, 2010	
Long term care staff	5,668	
Health care workers	31,866	
Pregnant women	1,640	
Residents of long term care	6,951	
65 years of age and over	52,176	
All children 6 months up to and including 23 months*	Dose #1	965
	Dose #2**	48
All children 24 months up to and including 59 months*	Dose #1	1,043
	Dose #2**	27
High risk: 5 years up to and including 8 years*	Dose #1	1,685
	Dose #2**	2
High risk: 9 years up to and including 64 years	29,034	
Healthy: 5 years up to and including 8 years*	Dose #1	2,226
	Dose #2**	5
Healthy: 9 years up to and including 64 years	90,138	
Total number of clients who have received 1 dose	223,392	
Total number of 2nd doses administered to those eligible*	82	

Source: AHS Zones (zones are required to report doses of seasonal influenza vaccine administered by community and other providers (e.g. physicians, pharmacists, LTC, WHS/OHS programs) twice during the influenza season. These numbers are from the first report (for doses delivered from Oct 3 to Dec 31, 2010). The remaining doses will be reported at a later date.

*Children under 9 years of age who have not received at least one dose of seasonal influenza vaccine in past years require two doses, given at least four weeks apart.

** In some cases, it was not possible to separate dose 1's from dose 2's. Therefore, the dose 1 category may contain some 2nd doses.

Note: Immunization coverage rates will be reported at the end of the influenza season

For more information on data definitions and sources see [Annex: Data Notes section at the end of this report](#)

SURVEILLANCE AND HEALTH STATUS ASSESSMENT

Public Health Surveillance

Report Date: March 1, 2011

An influenza report targeted to the general public is available at: <http://www.health.alberta.ca/health-info/influenza-evidence.html>

SECTION 2: ZONE 1 - SOUTH

[Back to first page](#)

Summary

Generally, respiratory virus activity in South Zone has remained steady in recent weeks.

Laboratory Data (see [Figure 2A](#), [Figure 2B](#), [Figure 2C](#), [Table 2A](#) & [Table 2B](#))

RSV is currently the predominant virus being confirmed in South Zone. So far this season, there have been a total of 58 confirmed cases of influenza in this part of the province. At this point in the season, the age specific rate for confirmed influenza in South zone is highest for infants under the age of 2 years and children between the ages of 2 to less than 5 years, at 6 per 10,000 and 7 per 10,000, respectively.

Outbreaks

There have been no respiratory outbreaks reported in South Zone this season.

Health Link Alberta Calls (see [Figure 2D](#))

The number of calls to Health Link Alberta for cough or breathing difficulties by residents of South Zone was 31% higher in Week 8 (Feb 20-26, 2011) compared to Week 7. This indicator is currently at its second highest value recorded in this season.

Emergency Department/Urgent Care Center Visits and Hospital Admissions

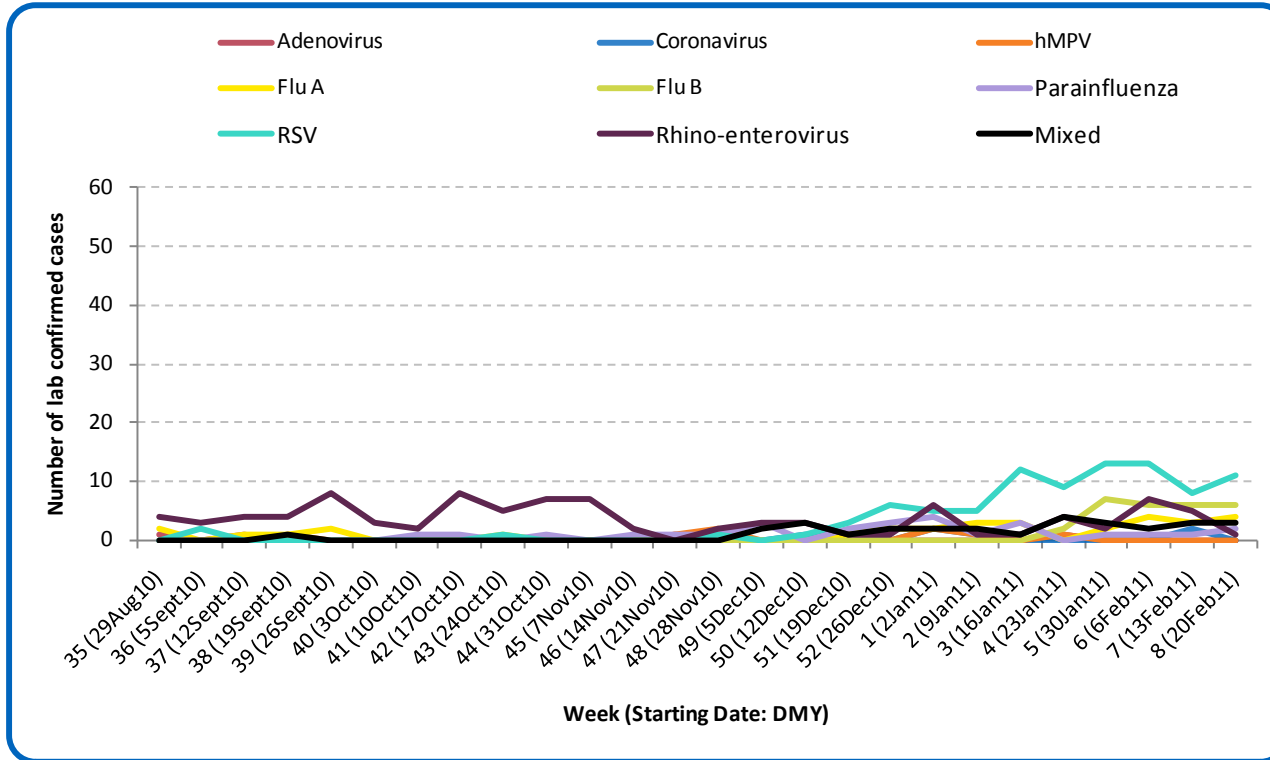
This information is not available for South Zone.

Sentinel Physician Office Visits

There were no reports of ILI- or LRTI-related visits to sentinel physician offices by residents of the South Zone in Week 7 (Feb 13-19, 2011).

[Back to start of section](#)

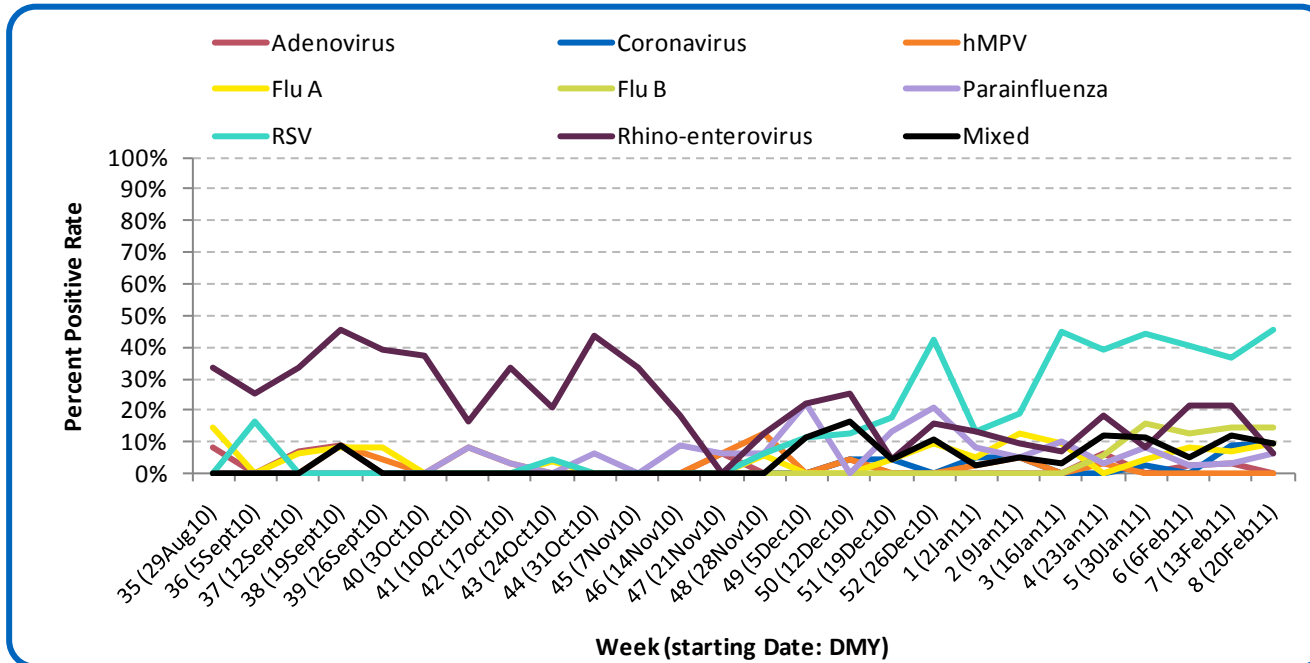
Figure 2A: Laboratory confirmed respiratory virus cases, by virus type, by week, South Zone (2010-2011)



Sources: DIAL – Provincial Laboratory and the Outbreak Response Toolkit (includes cases with positive respiratory specimens received on or before Feb 26, 2011). For more information on data definitions and sources see [Annex: Data Notes section at the end of this report](#)

[Back to start of section](#)

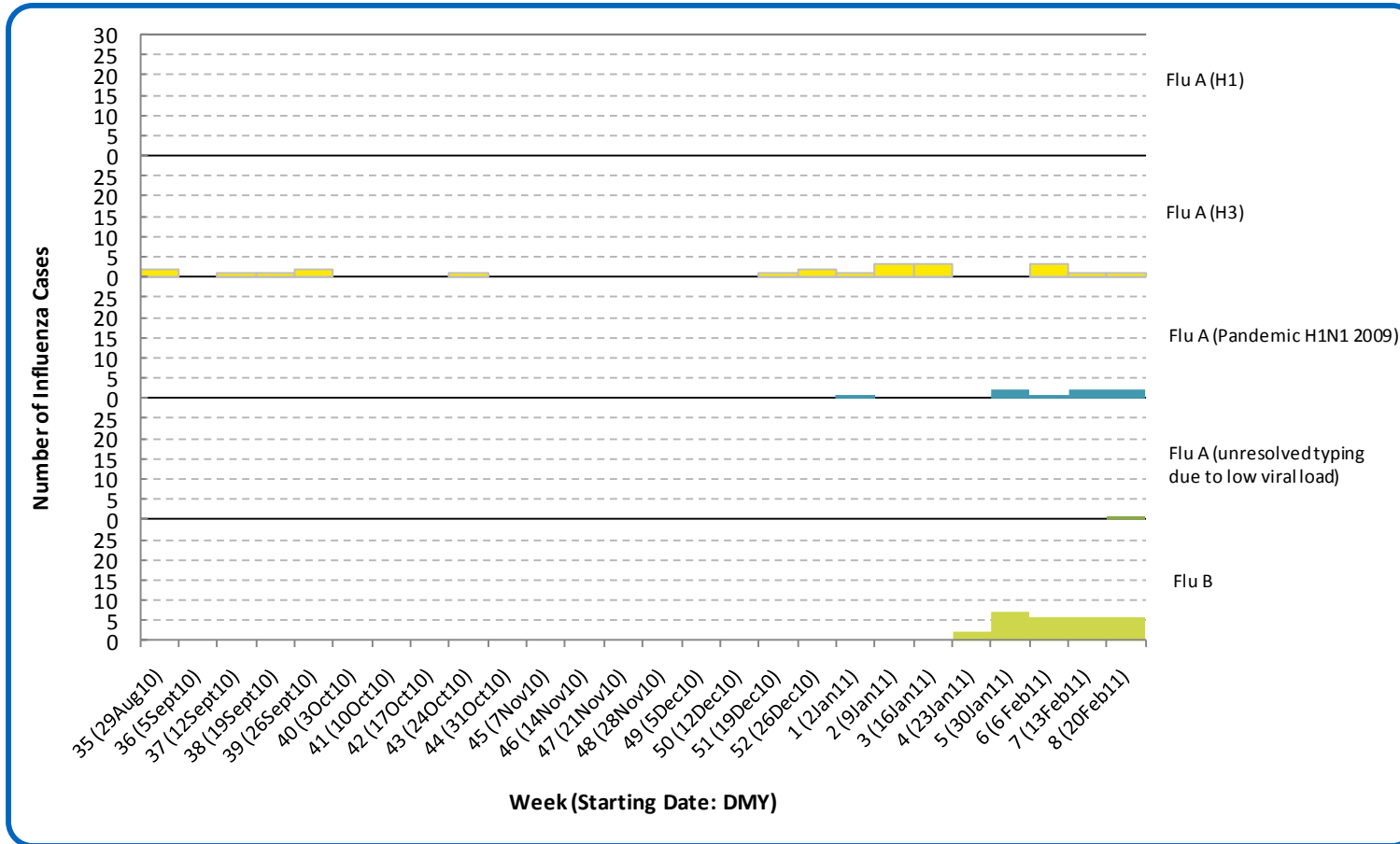
Figure 2B: Respiratory specimen percent positive rates, by virus type, by week, South Zone (2010-2011)



Source: DIAL – Provincial Laboratory (includes cases with positive respiratory specimens received on or before Feb 26, 2011)
For more information on data definitions and sources see [Annex: Data Notes section at the end of this report](#)

[Back to start of section](#)

Figure 2C: Laboratory confirmed influenza cases, by subtype, by week specimen received, South Zone (2010-2011)



Source: Outbreak Response Toolkit (includes cases with positive respiratory specimens received on or before Feb 26, 2011).

*Note: 2 specimens were positive for influenza B and one other virus type.

For more information on data definitions and sources see [Annex: Data Notes section at the end of this report](#)

SURVEILLANCE AND HEALTH STATUS ASSESSMENT

Public Health Surveillance

Report Date: March 1, 2011

An influenza report targeted to the general public is available at: <http://www.health.alberta.ca/health-info/influenza-evidence.html>

[Back to start of section](#)

Table 2A: New influenza cases (and age specific rates), by subtype, by age group, South Zone (Week 7: Feb 13-19, 2011)

	Flu A (Seasonal-H1)		Flu A (Seasonal-H3)		Flu A (Pandemic H1N1 2009)		Flu A (unresolved typing due to low viral load)		Flu B		Total	
	#	Rate (per 10,000)	#	Rate (per 10,000)	#	Rate (per 10,000)	#	Rate (per 10,000)	#	Rate (per 10,000)	#	Rate (per 10,000)
0 to <2 years	0	0.0	0	0.0	0	0.0	0	0.0	1	1.2	1	1.2
2 to <5 years	0	0.0	0	0.0	0	0.0	0	0.0	0	0.0	0	0.0
5 to <9 years	0	0.0	1	0.7	0	0.0	0	0.0	0	0.0	1	0.7
9 to <18 years	0	0.0	0	0.0	0	0.0	0	0.0	0	0.0	0	0.0
18 to <65 years	0	0.0	0	0.0	2	0.1	1	0.1	3	0.2	6	0.3
65 to <75 years	0	0.0	0	0.0	0	0.0	0	0.0	1	0.5	1	0.5
75+ years	0	0.0	0	0.0	0	0.0	0	0.0	1	0.5	1	0.5
Total	0	0.0	1	<0.1	2	0.1	1	<0.1	6	0.2	10	0.4

Table 2B: Cumulative influenza cases (and age specific rates), by subtype, by age group, South Zone (Aug 29, 2010–Feb 26, 2011)

	Flu A (Seasonal-H1)		Flu A (Seasonal-H3)		Flu A (Pandemic H1N1 2009)		Flu A (unresolved typing due to low viral load)		Flu B		Total	
	#	Rate (per 10,000)	#	Rate (per 10,000)	#	Rate (per 10,000)	#	Rate (per 10,000)	#	Rate (per 10,000)	#	Rate (per 10,000)
0 to <2 years	0	0.0	3	3.6	0	0.0	0	0.0	2	2.4	5	6.1
2 to <5 years	0	0.0	4	3.5	2	1.7	0	0.0	2	1.7	8	6.9
5 to <9 years	0	0.0	1	0.7	0	0.0	0	0.0	2	1.4	3	2.1
9 to <18 years	0	0.0	0	0.0	0	0.0	0	0.0	9	2.6	9	2.6
18 to <65 years	0	0.0	13	0.7	4	0.2	1	0.1	10	0.6	28	1.6
65 to <75 years	0	0.0	0	0.0	2	1.1	0	0.0	1	0.5	3	1.6
75+ years	0	0.0	1	0.5	0	0.0	0	0.0	1	0.5	2	1.1
Total	0	0.0	22	0.8	8	0.3	1	<0.1	27	1.0	58	2.1

Source for Tables 2A & 2B: Outbreak Response Toolkit (includes cases with positive respiratory specimens received on or before Feb 26, 2011).

Population data values used to calculate rates are for June 30, 2009 and are estimated using actual population values from the Alberta Health Care Insurance Plan (AHCIP) Registration File as of March 31, 2009.

For more information on data definitions and sources see [Annex: Data Notes section at the end of this report](#)

SURVEILLANCE AND HEALTH STATUS ASSESSMENT

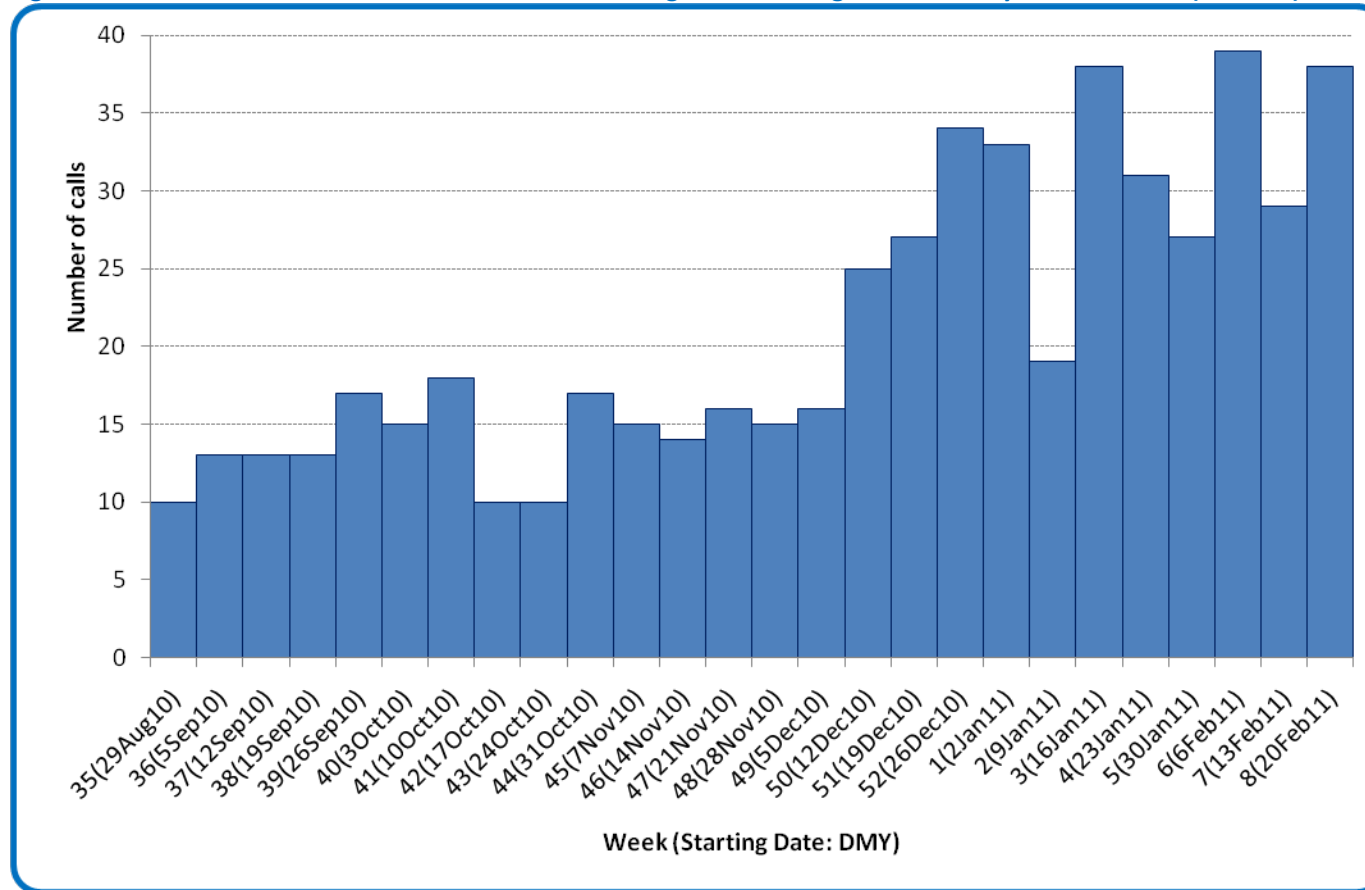
Public Health Surveillance

Report Date: March 1, 2011

An influenza report targeted to the general public is available at: <http://www.health.alberta.ca/health-info/influenza-evidence.html>

[Back to start of section](#)

Figure 2D: Number of calls to Health Link Alberta for cough or breathing difficulties, by week, Alberta (2010-11)



Source: Sharp Focus - Health Link Alberta - via Alberta Real Time Syndromic Surveillance Net (ARTSSN) as of 23:59 on Feb 26, 2011. For more information on data definitions and sources see [Annex: Data Notes section at the end of this report](#)

SURVEILLANCE AND HEALTH STATUS ASSESSMENT

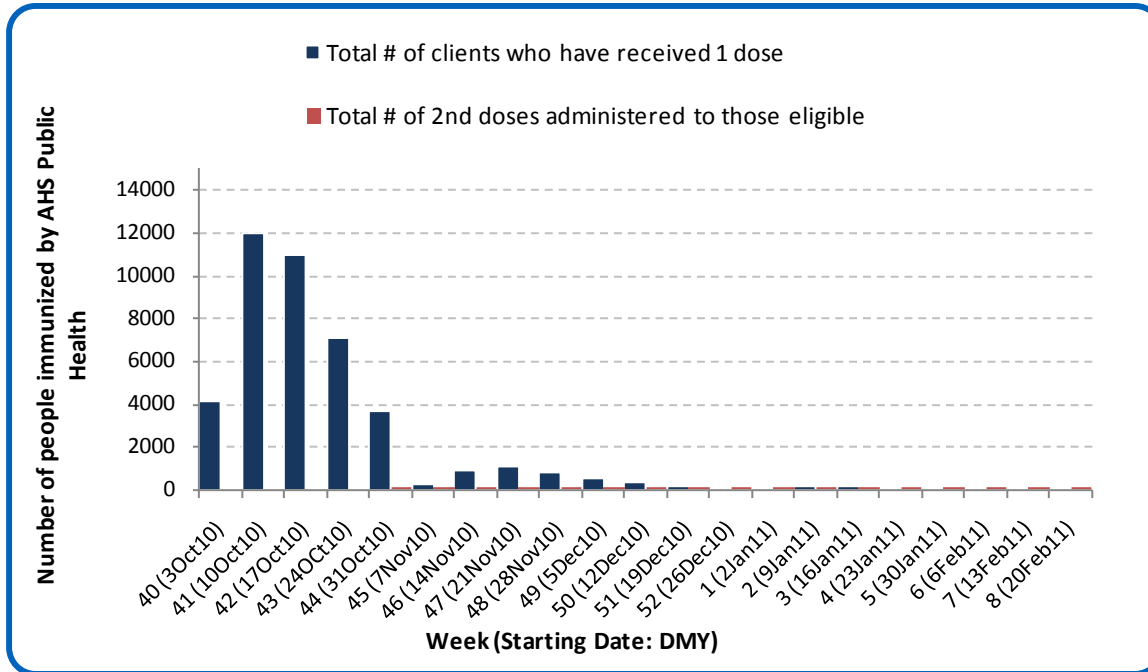
Public Health Surveillance

Report Date: March 1, 2011

An influenza report targeted to the general public is available at: <http://www.health.alberta.ca/health-info/influenza-evidence.html>

[Back to start of section](#)

Figure 2E: Number immunized by AHS (Public Health), by week, South Zone (2010-2011)



Source: AHS Zones (doses do not include those delivered by external providers)
 Note: Immunization coverage rates will be reported at the end of the influenza season
 For more information on data definitions and sources see [Annex: Data Notes section at the end of this report](#)

[Back to start of section](#)

Table 2C: AHS (Public Health) delivered influenza immunizations (with cumulative totals), by priority group, South Zone (2010-2011)

Priority Group		Number Immunized (Week 8 – Feb 20-26, 2011)	Cumulative Number Immunized (since Oct 3, 2010)
Long term care staff		0	616
Health care workers		0	1,567
Pregnant women		0	302
Residents of long term care		0	730
65 years of age and over		1	15,594
All children 6 months up to and including 23 months*	Dose #1	31	1,519
	Dose #2	12	551
All children 24 months up to and including 59 months*	Dose #1	3	1,963
	Dose #2	1	123
High risk: 5 years up to and including 8 years*	Dose #1	1	504
	Dose #2	2	21
High risk: 9 years up to and including 64 years		1	4,099
Healthy: 5 years up to and including 8 years*	Dose #1	6	1,501
	Dose #2	0	59
Healthy: 9 years up to and including 64 years		17	14,646
Total number of clients who have received 1 dose		60	43,041
Total number of 2nd doses administered to those eligible*		15	754

Source: AHS Zones (doses do not include those delivered by external providers)

*Children under 9 years of age who have not received at least one dose of seasonal influenza vaccine in past years require two doses, given at least four weeks apart.

Note: Immunization coverage rates will be reported at the end of the influenza season

For more information on data definitions and sources see [Annex: Data Notes section at the end of this report](#)

SURVEILLANCE AND HEALTH STATUS ASSESSMENT

Public Health Surveillance

Report Date: March 1, 2011

An influenza report targeted to the general public is available at: <http://www.health.alberta.ca/health-info/influenza-evidence.html>

[Back to start of section](#)

Table 2D: Influenza immunizations delivered by external partners, by priority group, South Zone (Oct 3-Dec 31, 2010)

Priority Group	# Immunized Oct 3-Dec 31, 2010	
Long term care staff	558	
Health care workers	3,288	
Pregnant women	205	
Residents of long term care	570	
65 years of age and over	4,248	
All children 6 months up to and including 23 months*	Dose #1	9
	Dose #2**	0
All children 24 months up to and including 59 months*	Dose #1	11
	Dose #2**	0
High risk: 5 years up to and including 8 years*	Dose #1	41
	Dose #2**	0
High risk: 9 years up to and including 64 years	2,188	
Healthy: 5 years up to and including 8 years*	Dose #1	14
	Dose #2**	0
Healthy: 9 years up to and including 64 years	6,507	
Total number of clients who have received 1 dose	17,639	
Total number of 2nd doses administered to those eligible*	0	

Source: AHS Zones (zones are required to report doses of seasonal influenza vaccine administered by community and other providers (e.g. physicians, pharmacists, LTC, WHS/OHS programs) twice during the influenza season. These numbers are from the first report (for doses delivered from Oct 3 to Dec 31, 2010). The remaining doses will be reported at a later date.

*Children under 9 years of age who have not received at least one dose of seasonal influenza vaccine in past years require two doses, given at least four weeks apart.

** In some cases, it was not possible to separate dose 1's from dose 2's. Therefore, the dose 1 category may contain some 2nd doses.

Note: Immunization coverage rates will be reported at the end of the influenza season

For more information on data definitions and sources see [Annex: Data Notes section at the end of this report](#)

SURVEILLANCE AND HEALTH STATUS ASSESSMENT

Public Health Surveillance

Report Date: March 1, 2011

An influenza report targeted to the general public is available at: <http://www.health.alberta.ca/health-info/influenza-evidence.html>

SECTION 3: ZONE 2 - CALGARY

[Back to first page](#)

Summary

Respiratory virus activity remains at a steady level in Calgary Zone however ILI activity in emergency departments and urgent care centers has increased.

Laboratory Data (see [Figure 3A](#), [Figure 3B](#), [Figure 3C](#), [Table 3A](#) & [Table 3B](#))

RSV is currently the predominant virus circulating in Calgary Zone however it appears to have peaked and is now declining. Since the beginning of the season, a total of 223 cases of influenza have been confirmed in Calgary Zone (49% have been identified as influenza A (H3), 17% as influenza A (H1N1) 2009, 30% as influenza type B and 4% as influenza A unsubtype). Compared to the age specific rates in other age groups, the rate for confirmed influenza is highest among infants less than 2 years of age.

Outbreaks (see [Figure 3D](#))

Since the last report, there have been no new respiratory outbreaks reported in Calgary Zone.

Health Link Alberta Calls (see [Figure 3E](#))

The number of calls to Health Link Alberta for cough or breathing difficulties by residents of Calgary Zone was 6% higher in Week 8 (Feb 20-26, 2011) than in Week 7. This is the second highest value observed for this indicator this season.

Emergency Department/Urgent Care Center Visits and Hospital Admissions (See [Figure 3F](#))

The number of visits for influenza-like illness (ILI) at the six urban emergency departments/ urgent care centers (ED's) in the City of Calgary was 18% higher in Week 8 (Feb 20-26, 2011) compared to the previous week, which raised the percentage of ILI positive visits to over 9% of all screened visits (from approximately 7% in the previous week). This percentage is the highest observed this season. Hospital admissions for ILI-related visits, however, were 18% lower in Week 8 compared to the previous week.

The number of visits for people with cough symptoms at the same ED's remained unchanged in Week 8 compared to the previous week; hospital admissions for these same reasons were 10% less during the same period.

Sentinel Physician Office Visits

The combined percentage for ILI- and LRTI-related visits was 270% higher in Week 7 (Feb 13-19, 2011) compared to Week 6, as the percentage of ILI- and LRTI-related visits both increased (particularly LRTI-related visits which were 10 times higher in Week 7 compared to Week 6.)

SURVEILLANCE AND HEALTH STATUS ASSESSMENT

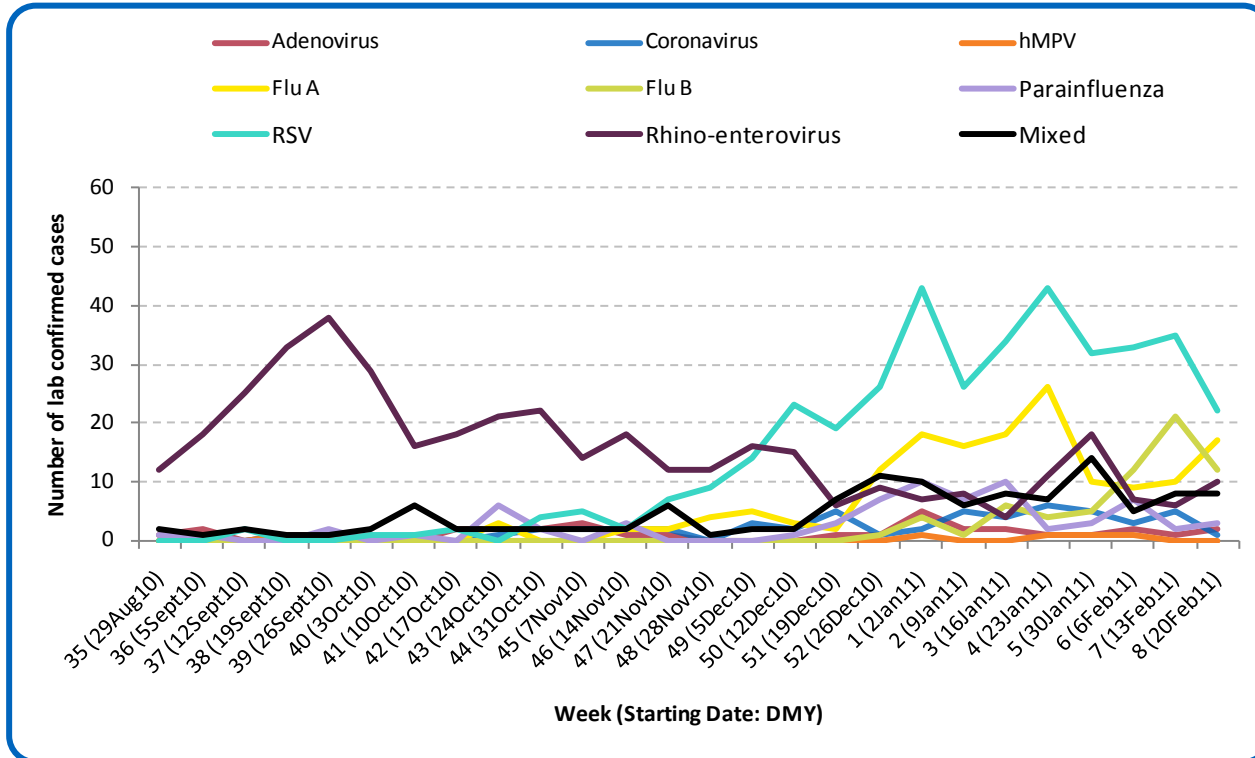
Public Health Surveillance

Report Date: March 1, 2011

An influenza report targeted to the general public is available at: <http://www.health.alberta.ca/health-info/influenza-evidence.html>

[Back to start of section](#)

Figure 3A: Laboratory confirmed respiratory virus cases, by virus type, by week, Calgary Zone (2010-2011)



Sources: DIAL – Provincial Laboratory and the Outbreak Response Toolkit (includes cases with positive respiratory specimens received on or before Feb 26, 2011). For more information on data definitions and sources see [Annex: Data Notes section at the end of this report](#)

SURVEILLANCE AND HEALTH STATUS ASSESSMENT

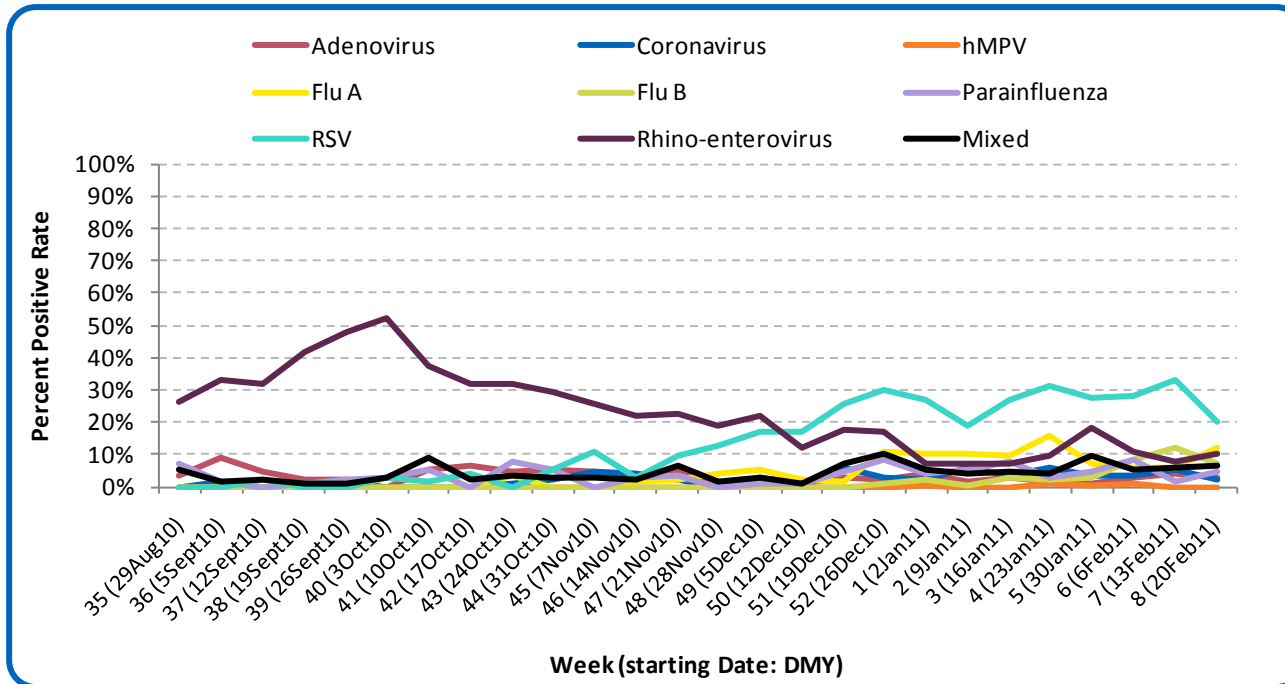
Public Health Surveillance

Report Date: March 1, 2011

An influenza report targeted to the general public is available at: <http://www.health.alberta.ca/health-info/influenza-evidence.html>

[Back to start of section](#)

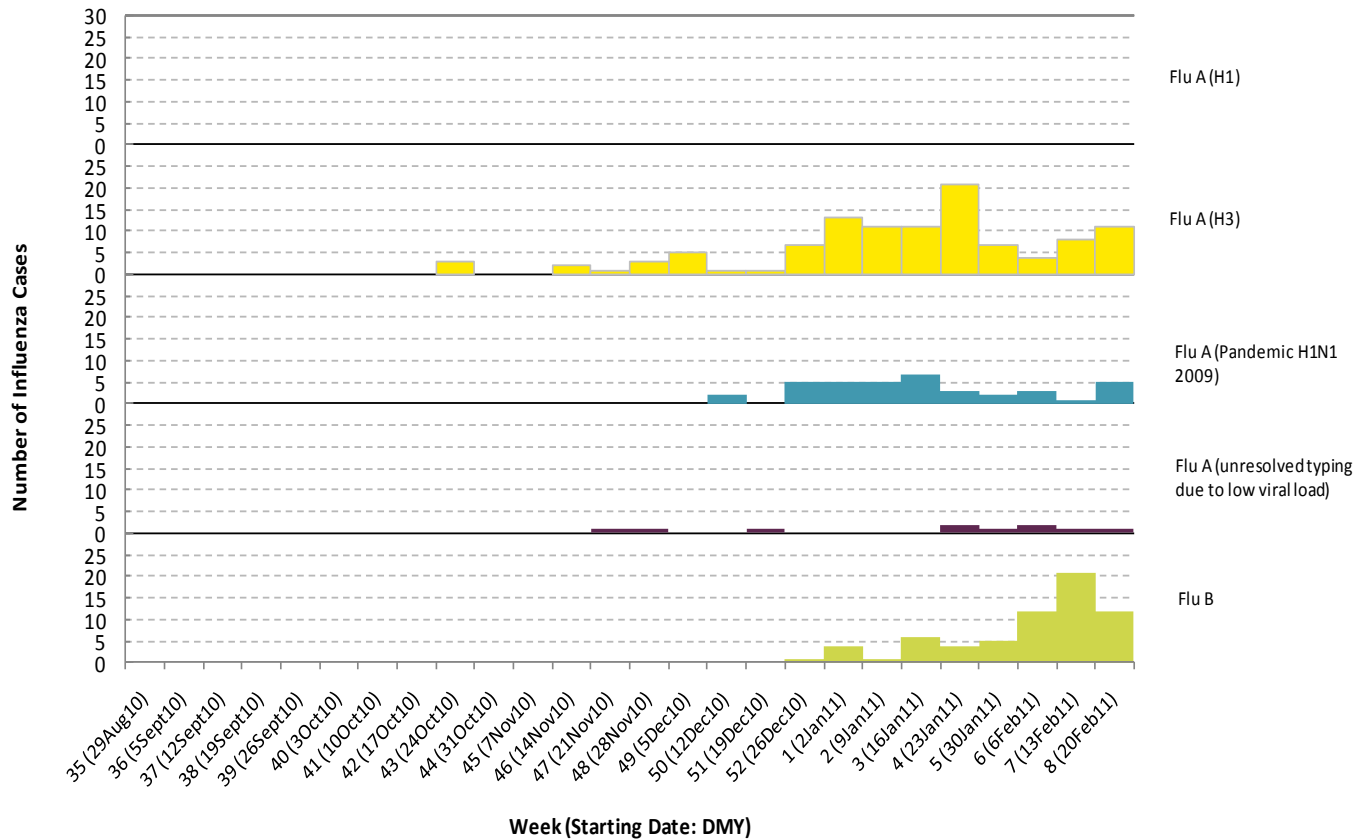
Figure 3B: Respiratory specimen percent positive rates, by virus type, by week, Calgary Zone (2010-2011)



Source: DIAL – Provincial Laboratory (includes cases with positive respiratory specimens received on or before Feb 26, 2011)
For more information on data definitions and sources see [Annex: Data Notes section at the end of this report](#)

[Back to start of section](#)

Figure 3C: Laboratory confirmed influenza cases, by subtype, by week specimen received, Calgary Zone (2010-2011)



*Note: 5 specimens were positive for influenza A or B and one or more other virus type(s). One specimen was positive for both influenza A & B. Source: Outbreak Response Toolkit (includes cases with positive respiratory specimens received on or before Feb 26, 2011). For more information on data definitions and sources see [Annex: Data Notes section at the end of this report](#)

SURVEILLANCE AND HEALTH STATUS ASSESSMENT

Public Health Surveillance

Report Date: March 1, 2011

An influenza report targeted to the general public is available at: <http://www.health.alberta.ca/health-info/influenza-evidence.html>

[Back to start of section](#)

Table 3A: New influenza cases (and age specific rates), by subtype, by age group, Calgary Zone (Week 7: Feb 13-19, 2011)

	Flu A (Seasonal-H1)		Flu A (Seasonal-H3)		Flu A (Pandemic H1N1 2009)		Flu A (unresolved typing due to low viral load)		Flu B		Total	
	#	Rate (per 10,000)	#	Rate (per 10,000)	#	Rate (per 10,000)	#	Rate (per 10,000)	#	Rate (per 10,000)	#	Rate (per 10,000)
0 to <2 years	0	0.0	3	0.8	0	0.0	0	0.0	0	0.0	3	0.8
2 to <5 years	0	0.0	0	0.0	0	0.0	0	0.0	2	0.4	2	0.4
5 to <9 years	0	0.0	2	0.3	0	0.0	0	0.0	1	0.2	3	0.5
9 to <18 years	0	0.0	2	0.1	1	0.1	0	0.0	3	0.2	6	0.4
18 to <65 years	0	0.0	4	<0.1	3	<0.1	1	<0.1	6	0.1	14	0.2
65 to <75 years	0	0.0	0	0.0	1	0.1	0	0.0	0	0.0	1	0.1
75+ years	0	0.0	0	0.0	0	0.0	0	0.0	0	0.0	0	0.0
Total	0	0.0	11	0.1	5	<0.1	1	<0.1	12	0.1	29	0.2

Table 3B: Cumulative influenza cases (and age specific rates), by subtype, by age group, Calgary Zone (Aug 29, 2010 – Feb 26, 2011)

	Flu A (Seasonal-H1)		Flu A (Seasonal-H3)		Flu A (Pandemic H1N1 2009)		Flu A (unresolved typing due to low viral load)		Flu B		Total	
	#	Rate (per 10,000)	#	Rate (per 10,000)	#	Rate (per 10,000)	#	Rate (per 10,000)	#	Rate (per 10,000)	#	Rate (per 10,000)
0 to <2 years	0	0.0	14	3.8	3	0.8	1	0.3	7	1.9	25	6.7
2 to <5 years	0	0.0	8	1.6	2	0.4	1	0.2	8	1.6	19	3.7
5 to <9 years	0	0.0	7	1.1	1	0.2	2	0.3	11	1.8	21	3.3
9 to <18 years	0	0.0	8	0.5	1	0.1	2	0.1	18	1.2	29	2.0
18 to <65 years	0	0.0	52	0.6	30	0.3	3	<0.1	20	0.2	105	1.2
65 to <75 years	0	0.0	5	0.7	1	0.1	0	0.0	1	0.1	7	1.0
75+ years	0	0.0	15	2.5	0	0.0	1	0.2	1	0.2	17	2.9
Total	0	0.0	109	0.8	38	0.3	10	0.1	66	0.5	223	1.7

Source for tables 3A & 3B: Outbreak Response Toolkit (includes cases with positive respiratory specimens received on or before Feb 26, 2011).

Population data values used to calculate rates are for June 30, 2009 and are estimated using actual population values from the Alberta Health Care Insurance Plan (AHCIP) Registration File as of March 31, 2009.

For more information on data definitions and sources see [Annex: Data Notes section at the end of this report](#)

SURVEILLANCE AND HEALTH STATUS ASSESSMENT

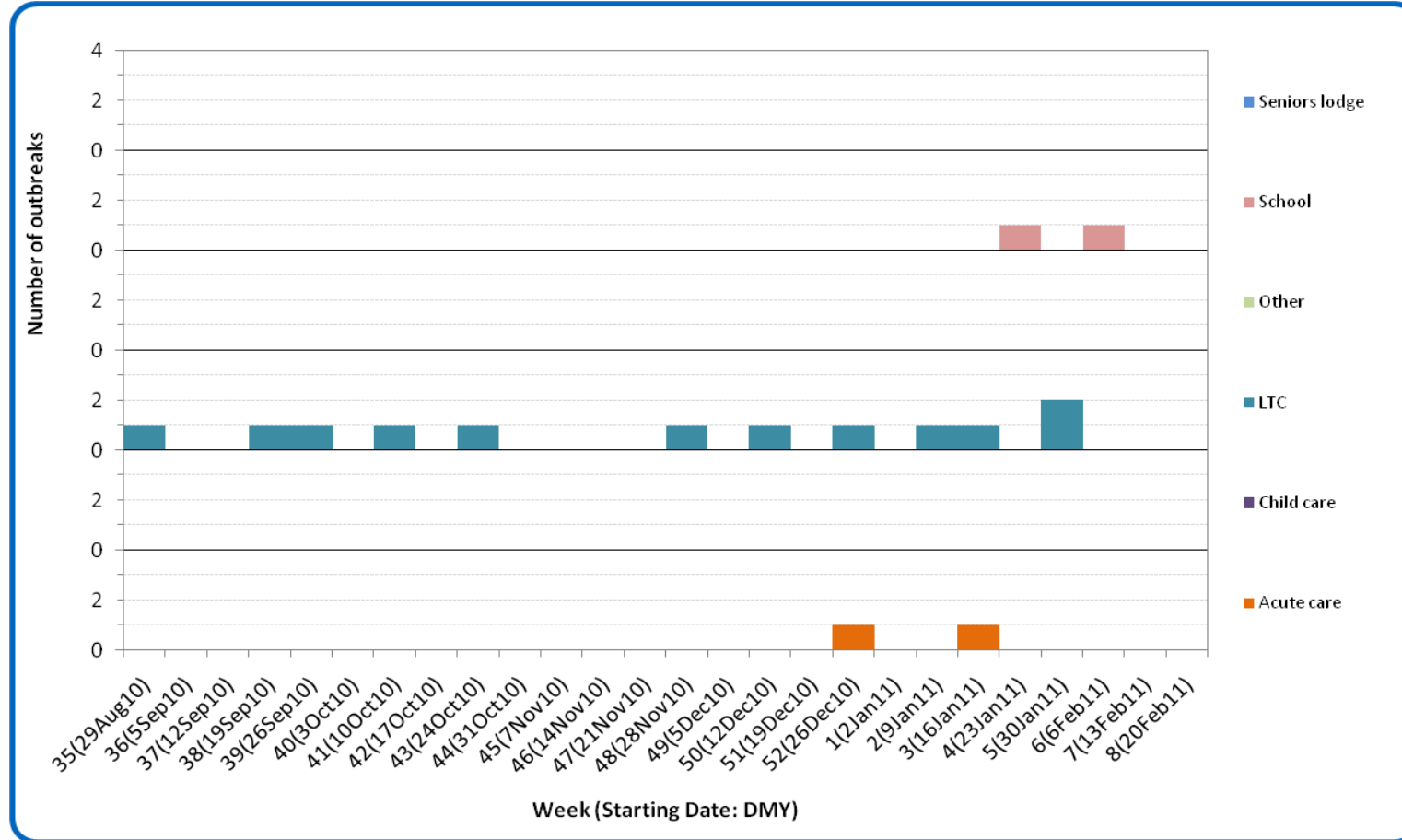
Public Health Surveillance

Report Date: March 1, 2011

An influenza report targeted to the general public is available at: <http://www.health.alberta.ca/health-info/influenza-evidence.html>

[Back to start of section](#)

Figure 3D: Respiratory outbreaks, by facility type, by onset week, Calgary Zone (2010-2011; school outbreaks may not have a laboratory confirmation)



Source: Alberta Outbreak Reporting Form as of 23:59 on Feb 26, 2011. LTC stands for long term care facility. For more information on data definitions and sources see [Annex: Data Notes section at the end of this report](#)

SURVEILLANCE AND HEALTH STATUS ASSESSMENT

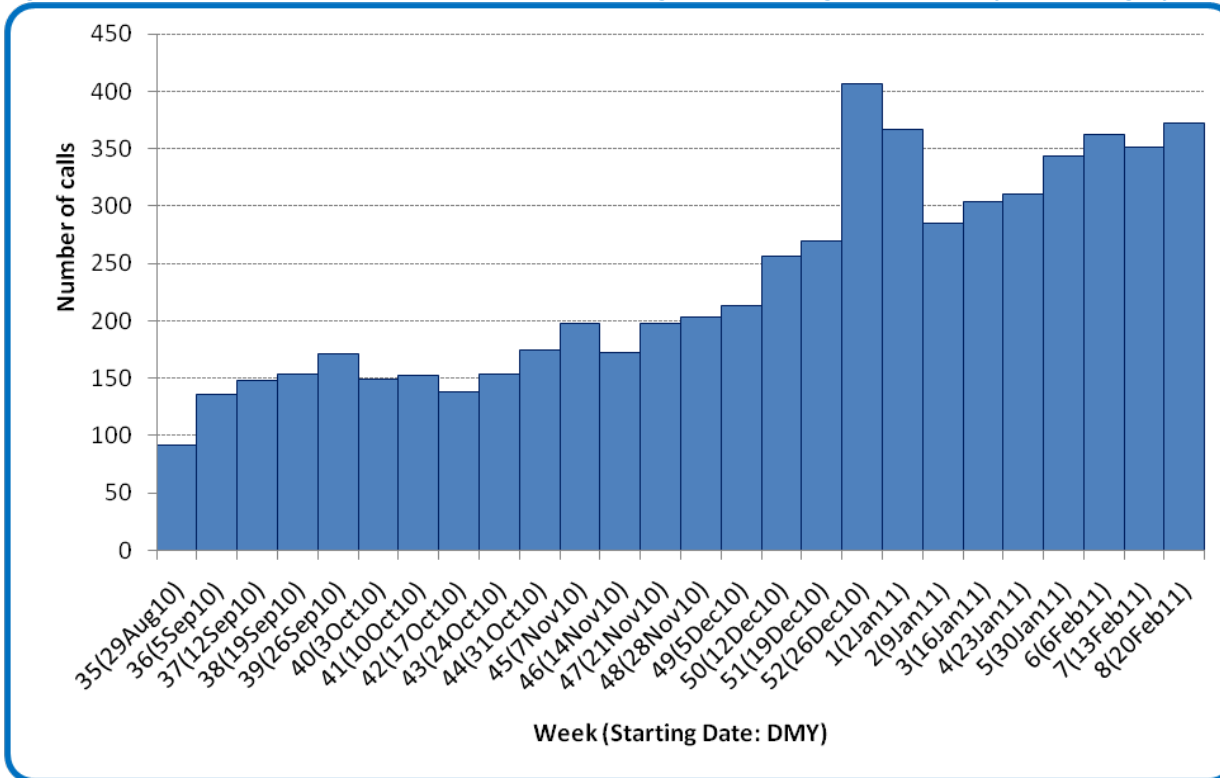
Public Health Surveillance

Report Date: March 1, 2011

An influenza report targeted to the general public is available at: <http://www.health.alberta.ca/health-info/influenza-evidence.html>

[Back to start of section](#)

Figure 3E: Number of calls to Health Link Alberta for cough or breathing difficulties, by week, Calgary Zone (2010-11)



Source: Sharp Focus - Health Link Alberta - via Alberta Real Time Syndromic Surveillance Net (ARTSSN) as of 23:59 on Feb 26, 2011. For more information on data definitions and sources see [Annex: Data Notes section at the end of this report](#)

SURVEILLANCE AND HEALTH STATUS ASSESSMENT

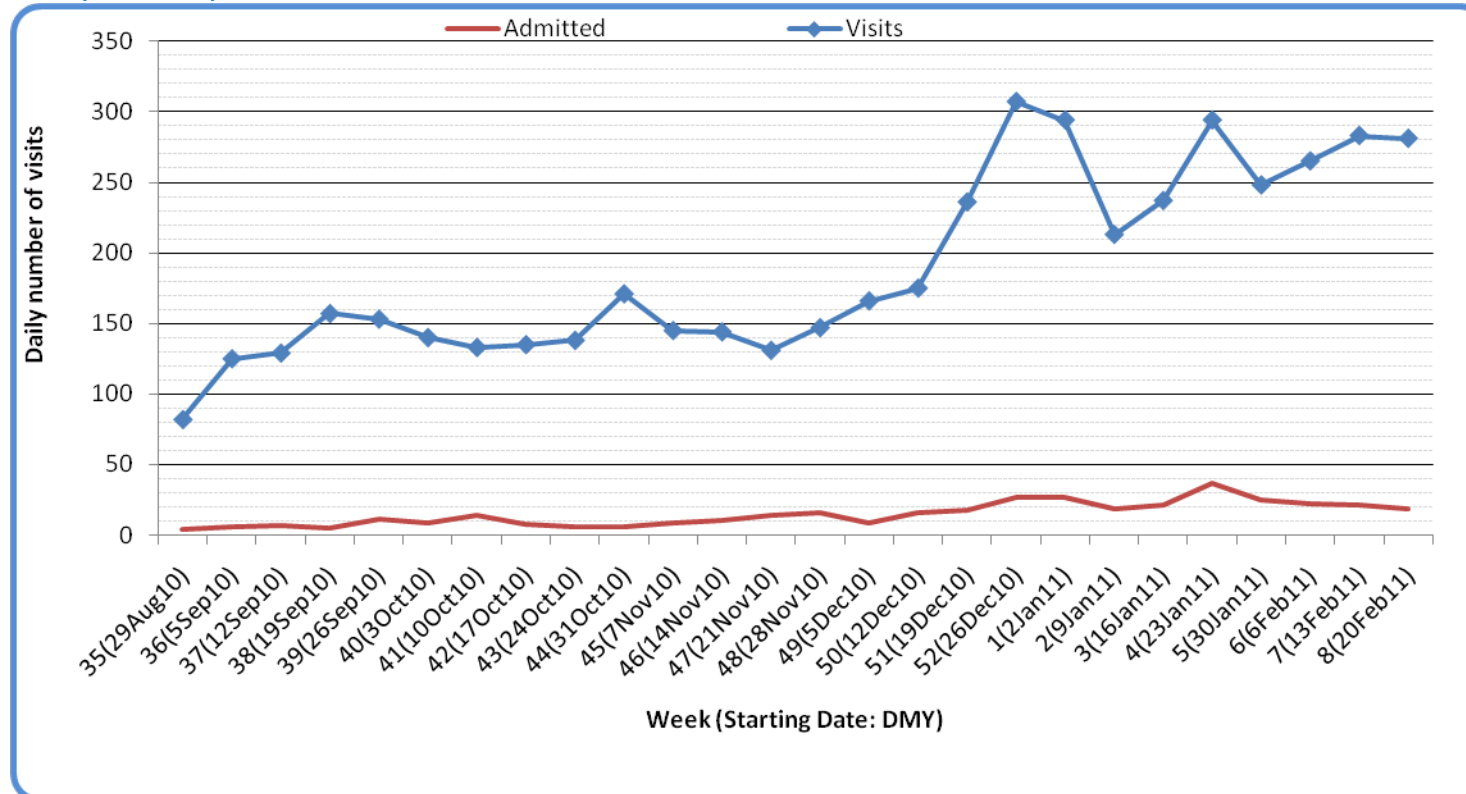
Public Health Surveillance

Report Date: March 1, 2011

An influenza report targeted to the general public is available at: <http://www.health.alberta.ca/health-info/influenza-evidence.html>

[Back to first start of section](#)

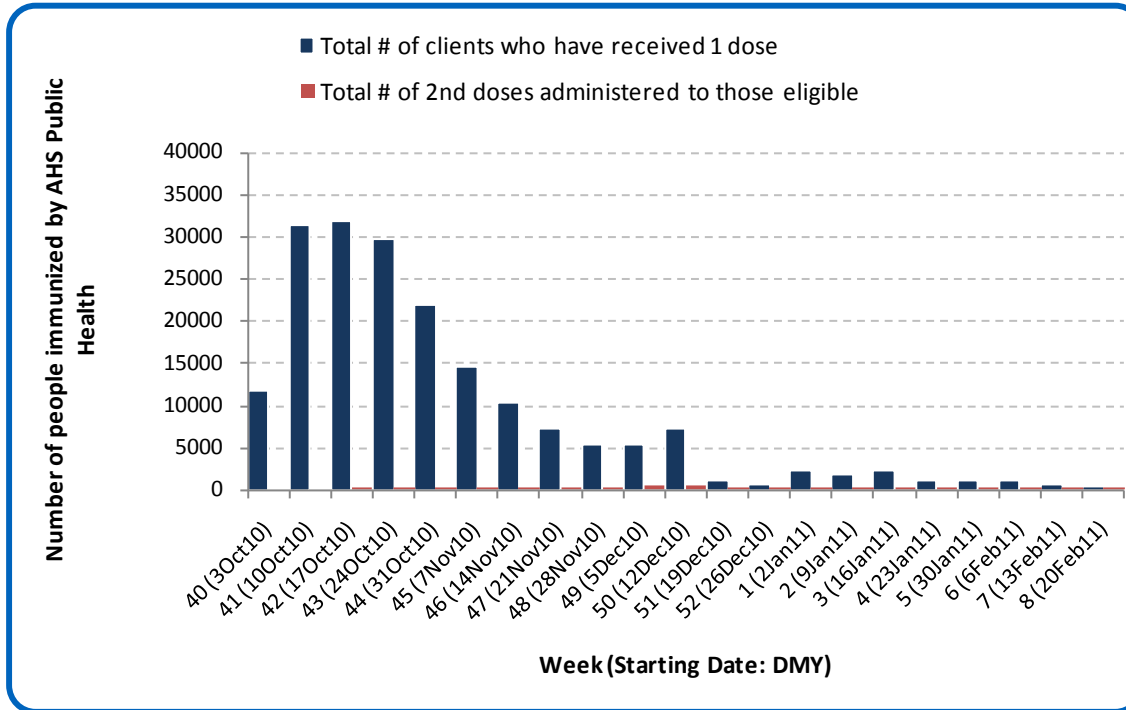
Figure 3F: Visits to urban emergency departments/urgent care centers in the City of Calgary with cough symptoms and admissions to hospitals, by visit week (2010-2011)



Source: Alberta Real Time Syndromic Surveillance Net (ARTSSN) as of 23:59 on Feb 26, 2011.
For more information on data definitions and sources see [Annex: Data Notes section at the end of this report](#)

[Back to start of section](#)

Figure 3G: Number immunized by AHS (Public Health), by week, Calgary Zone (2010-2011)



Source: AHS Zones (doses do not include those delivered by external providers)
 Note: Immunization coverage rates will be reported at the end of the influenza season
 For more information on data definitions and sources see [Annex: Data Notes section at the end of this report](#)

[Back to start of section](#)

Table 3C: AHS (Public Health) delivered influenza immunizations (with cumulative totals), by priority group, Calgary Zone (2010-2011)

Priority Group	Number Immunized (Week 8 – Feb 20-26, 2011)	Cumulative Number Immunized (since Oct 3, 2010)
Long term care staff	0	451
Health care workers	8	5,323
Pregnant women	1	1,955
Residents of long term care	0	706
65 years of age and over	8	44,687
All children 6 months up to and including 23 months*	Dose #1	237
	Dose #2	129
All children 24 months up to and including 59 months*	Dose #1	48
	Dose #2	11
High risk: 5 years up to and including 8 years*	Dose #1	14
	Dose #2	1
High risk: 9 years up to and including 64 years	16	19,936
Healthy: 5 years up to and including 8 years*	Dose #1	26
	Dose #2	2
Healthy: 9 years up to and including 64 years	183	83,564
Total number of clients who have received 1 dose	541	190,149
Total number of 2nd doses administered to those eligible*	143	4,140

Source: AHS Zones (doses do not include those delivered by external providers)

*Children under 9 years of age who have not received at least one dose of seasonal influenza vaccine in past years require two doses, given at least four weeks apart.

Note: Immunization coverage rates will be reported at the end of the influenza season

For more information on data definitions and sources see [Annex: Data Notes section at the end of this report](#)

SURVEILLANCE AND HEALTH STATUS ASSESSMENT

Public Health Surveillance

Report Date: March 1, 2011

An influenza report targeted to the general public is available at: <http://www.health.alberta.ca/health-info/influenza-evidence.html>

[Back to start of section](#)

Table 3D: Influenza immunizations delivered by external partners, by priority group, Calgary Zone (Oct 3-Dec 31, 2010)

Priority Group	# Immunized Oct 3-Dec 31, 2010	
Long term care staff	3,348	
Health care workers	13,764	
Pregnant women	1,257	
Residents of long term care	3,539	
65 years of age and over	27,582	
All children 6 months up to and including 23 months*	Dose #1	660
	Dose #2**	0
All children 24 months up to and including 59 months*	Dose #1	523
	Dose #2**	0
High risk: 5 years up to and including 8 years*	Dose #1	788
	Dose #2**	0
High risk: 9 years up to and including 64 years	14,231	
Healthy: 5 years up to and including 8 years*	Dose #1	1,280
	Dose #2**	0
Healthy: 9 years up to and including 64 years	53,436	
Total number of clients who have received 1 dose	120,408	
Total number of 2nd doses administered to those eligible*	0	

Source: AHS Zones (zones are required to report doses of seasonal influenza vaccine administered by community and other providers (e.g. physicians, pharmacists, LTC, WHS/OHS programs) twice during the influenza season. These numbers are from the first report (for doses delivered from Oct 3 to Dec 31, 2010). The remaining doses will be reported at a later date.

*Children under 9 years of age who have not received at least one dose of seasonal influenza vaccine in past years require two doses, given at least four weeks apart.

**In some cases, it was not possible to separate dose 1's from dose 2's. Therefore, dose 1 category may contain some 2nd doses.

Note: Immunization coverage rates will be reported at the end of the influenza season

For more information on data definitions and sources see [Annex: Data Notes section at the end of this report](#)

SURVEILLANCE AND HEALTH STATUS ASSESSMENT

Public Health Surveillance

Report Date: March 1, 2011

An influenza report targeted to the general public is available at: <http://www.health.alberta.ca/health-info/influenza-evidence.html>

SECTION 4: ZONE 3 - CENTRAL

[Back to first page](#)

Summary

Laboratory and Health Link data indicate that respiratory virus activity in Central Zone may be decreasing.

Laboratory Data (see [Figure 4A](#), [Figure 4B](#), [Figure 4C](#), [Table 4A](#) & [Table 4B](#))

RSV is currently the predominant virus being confirmed in Central Zone, although the estimated number of cases confirmed has been decreasing for the last several weeks. As of the end of last week (Feb 26, 2011), the total number of influenza cases confirmed in Central Zone this season is 64, with over 2/3 typed as influenza A (H3). At this point in the season, the age-specific rate for confirmed cases of influenza (all types) is highest for those under the age of 2 years (at 8 per 10,000) and 75 years and over (at almost 7 per 10,000).

Outbreaks (see [Figure 4D](#))

Since the last report, there have been no new respiratory outbreaks reported in Central Zone.

Health Link Alberta Calls (see [Figure 4E](#))

The number of calls to Health Link Alberta by residents of Central Zone for cough or breathing difficulties was 17% lower in Week 8 (Feb 20-26, 2011) than in Week 7.

Emergency Department/Urgent Care Center Visits and Hospital Admissions

There are no data available from this zone.

Sentinel Physician Office Visits

The combined percentage of ILI- and LRTI-related visits in Week 7 (Feb 13-19, 2011) was 8% higher in Week 7 (Feb 13-19, 2011) compared to Week 6. The value observed in Week 7 is typical for this time during the season in this zone.

SURVEILLANCE AND HEALTH STATUS ASSESSMENT

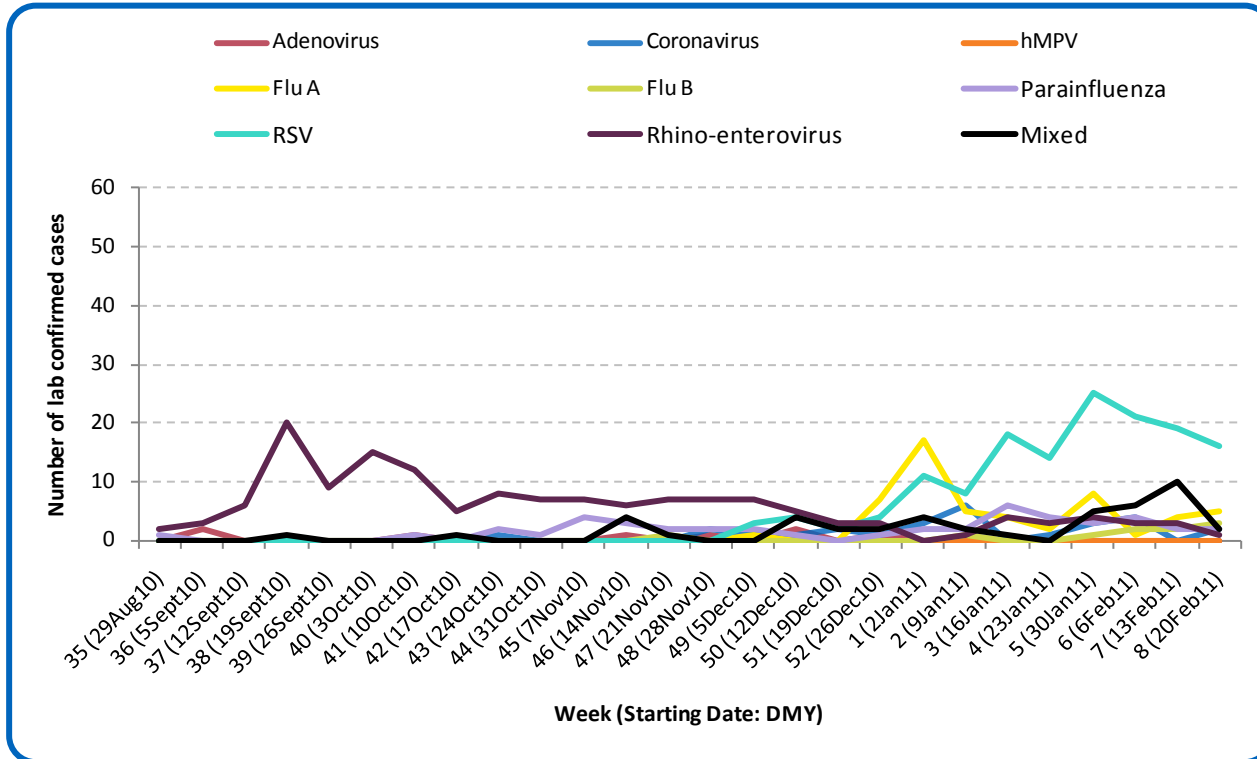
Public Health Surveillance

Report Date: March 1, 2011

An influenza report targeted to the general public is available at: <http://www.health.alberta.ca/health-info/influenza-evidence.html>

[Back to start of section](#)

Figure 4A: Laboratory confirmed respiratory virus cases, by virus type, by week, Central Zone (2010-2011)



Sources: DIAL – Provincial Laboratory and the Outbreak Response Toolkit (includes cases with positive respiratory specimens received on or before Feb 26, 2011). For more information on data definitions and sources see [Annex: Data Notes section at the end of this report](#)

SURVEILLANCE AND HEALTH STATUS ASSESSMENT

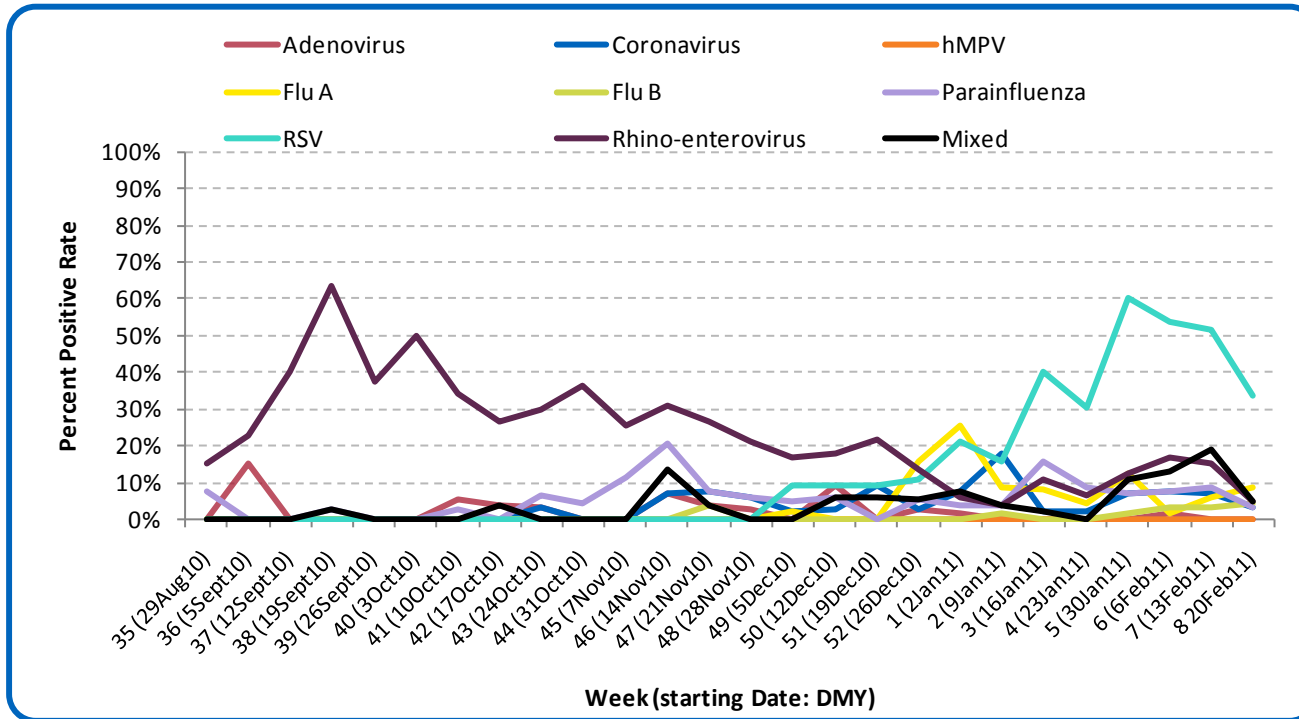
Public Health Surveillance

Report Date: March 1, 2011

An influenza report targeted to the general public is available at: <http://www.health.alberta.ca/health-info/influenza-evidence.html>

[Back to start of section](#)

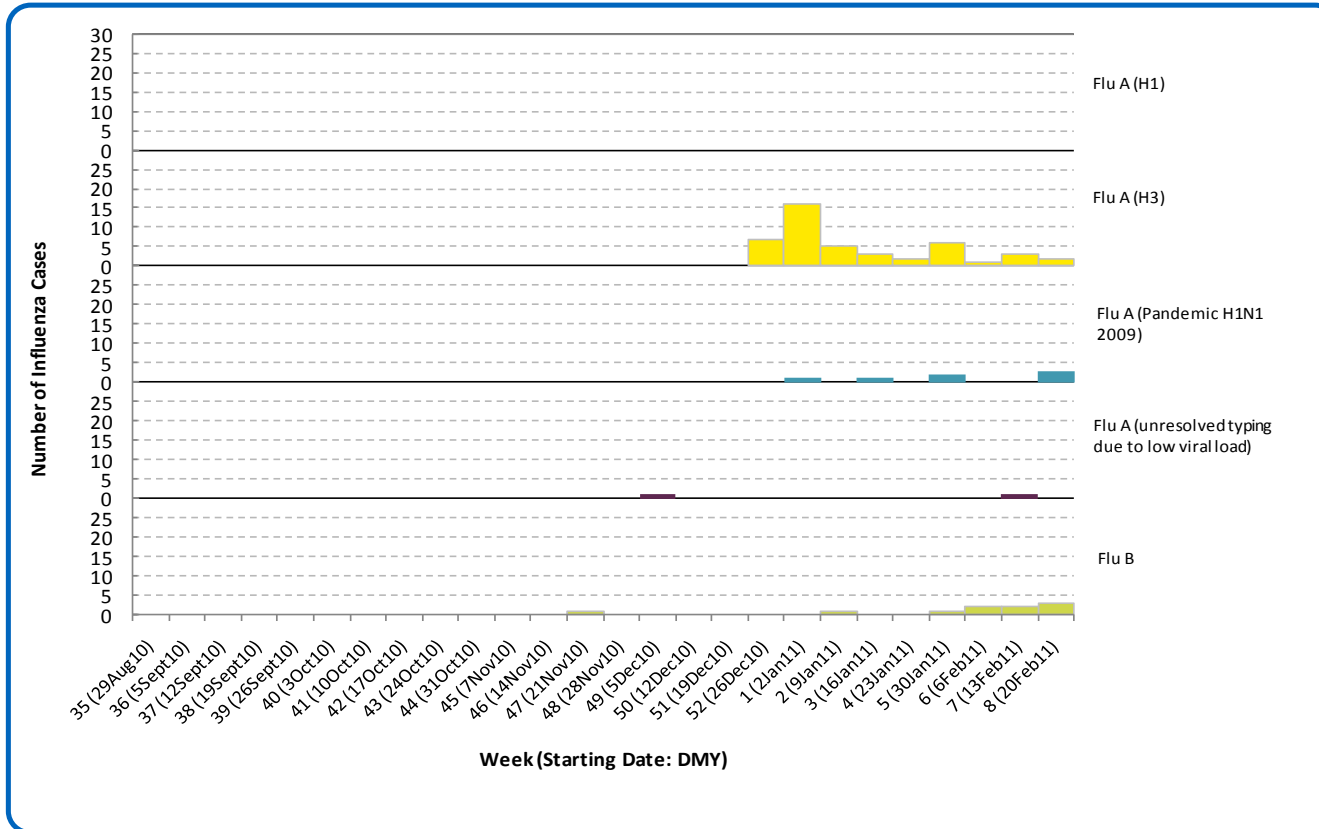
Figure 4B: Respiratory specimen percent positive rates, by virus type, by week, Central Zone (2010-2011)



Source: DIAL – Provincial Laboratory (includes cases with positive respiratory specimens received on or before Feb 26, 2011)
For more information on data definitions and sources see [Annex: Data Notes section at the end of this report](#)

[Back to start of section](#)

Figure 4C: Laboratory confirmed influenza cases, by subtype, by week specimen received, Central Zone (2010-2011)



*Note: 5 specimens were positive for influenza A or B and one or more other virus type(s).

Source: Outbreak Response Toolkit (includes cases with positive respiratory specimens received on or before Feb 26, 2011).

For more information on data definitions and sources see [Annex: Data Notes section at the end of this report](#)

[Back to start of section](#)

Table 4A: New influenza cases (and age specific rates), by subtype, by age group, Central Zone (Week 7: Feb 13-19, 2011)

	Flu A (Seasonal-H1)		Flu A (Seasonal-H3)		Flu A (Pandemic H1N1 2009)		Flu A (unresolved typing due to low viral load)		Flu B		Total	
	#	Rate (per 10,000)	#	Rate (per 10,000)	#	Rate (per 10,000)	#	Rate (per 10,000)	#	Rate (per 10,000)	#	Rate (per 10,000)
0 to <2 years	0	0.0	1	0.8	0	0.0	0	0.0	2	1.6	3	2.5
2 to <5 years	0	0.0	0	0.0	0	0.0	0	0.0	0	0.0	0	0.0
5 to <9 years	0	0.0	0	0.0	0	0.0	0	0.0	0	0.0	0	0.0
9 to <18 years	0	0.0	0	0.0	0	0.0	0	0.0	1	0.2	1	0.2
18 to <65 years	0	0.0	1	<0.1	3	0.1	0	0.0	0	0.0	4	0.1
65 to <75 years	0	0.0	0	0.0	0	0.0	0	0.0	0	0.0	0	0.0
75+ years	0	0.0	0	0.0	0	0.0	0	0.0	0	0.0	0	0.0
Total	0	0.0	2	<0.1	3	0.1	0	0.0	3	0.1	8	0.2

Table 4B: Cumulative influenza cases (and age specific rates), by subtype, by age group, Central Zone (Aug 29, 2010 – Feb 26, 2011)

	Flu A (Seasonal-H1)		Flu A (Seasonal-H3)		Flu A (Pandemic H1N1 2009)		Flu A (unresolved typing due to low viral load)		Flu B		Total	
	#	Rate (per 10,000)	#	Rate (per 10,000)	#	Rate (per 10,000)	#	Rate (per 10,000)	#	Rate (per 10,000)	#	Rate (per 10,000)
0 to <2 years	0	0.0	6	4.9	0	0.0	0	0.0	4	3.3	10	8.2
2 to <5 years	0	0.0	0	0.0	0	0.0	0	0.0	1	0.6	1	0.6
5 to <9 years	0	0.0	1	0.5	0	0.0	0	0.0	0	0.0	1	0.5
9 to <18 years	0	0.0	2	0.4	0	0.0	0	0.0	2	0.4	4	0.7
18 to <65 years	0	0.0	16	0.6	7	0.3	2	0.1	3	0.1	28	1.0
65 to <75 years	0	0.0	2	0.7	0	0.0	0	0.0	0	0.0	2	0.7
75+ years	0	0.0	18	6.6	0	0.0	0	0.0	0	0.0	18	6.6
Total	0	0.0	45	1.0	7	0.2	2	<0.1	10	0.2	64	1.5

Source for Tables 4A & 4B: Outbreak Response Toolkit (includes cases with positive respiratory specimens received on or before Feb 26, 2011).

Population data values used to calculate rates are for June 30, 2009 and are estimated using actual population values from the Alberta Health Care Insurance Plan (AHCIP) Registration File as of March 31, 2009.

For more information on data definitions and sources see [Annex: Data Notes section at the end of this report](#)

SURVEILLANCE AND HEALTH STATUS ASSESSMENT

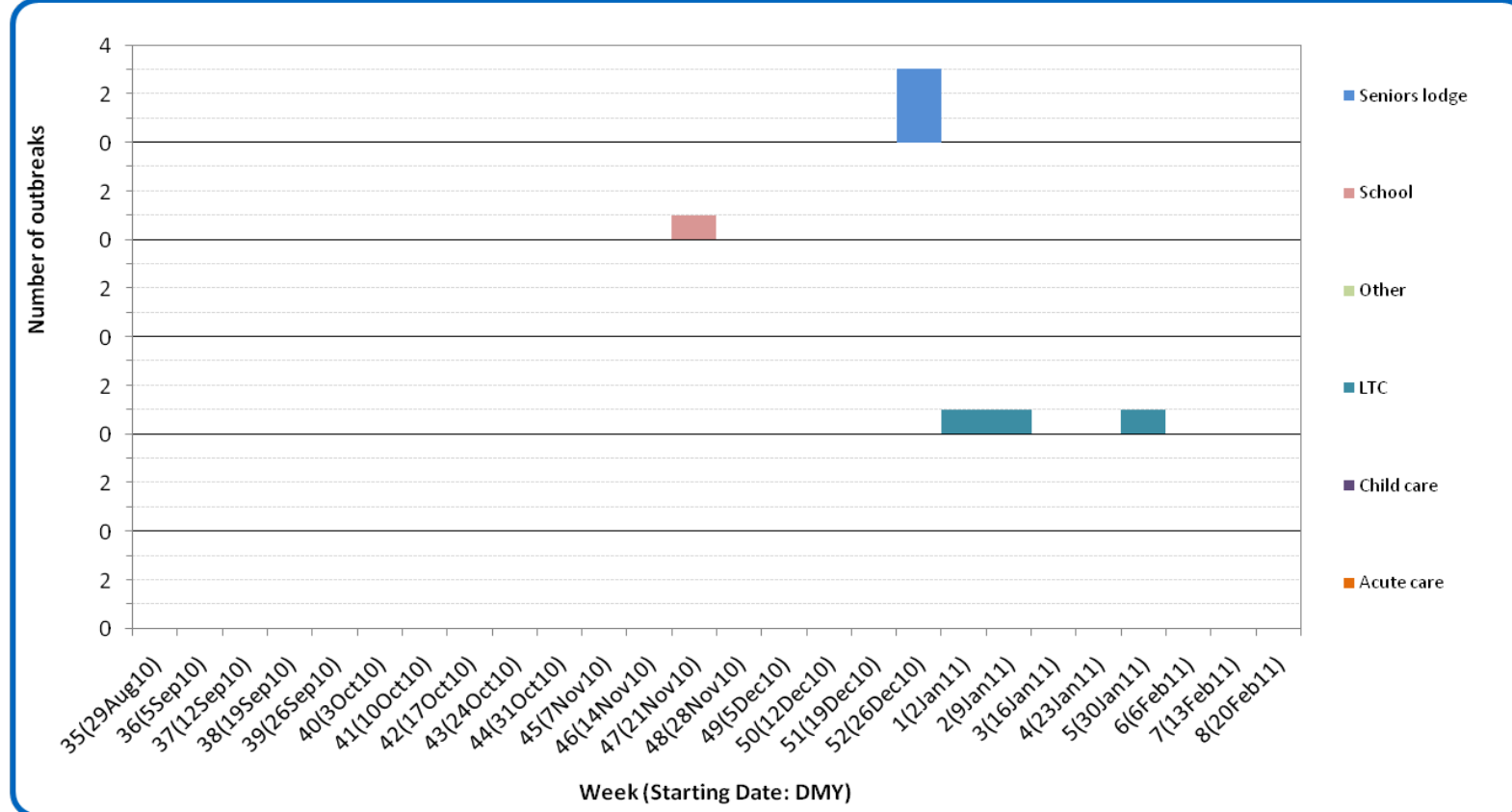
Public Health Surveillance

Report Date: March 1, 2011

An influenza report targeted to the general public is available at: <http://www.health.alberta.ca/health-info/influenza-evidence.html>

[Back to start of section](#)

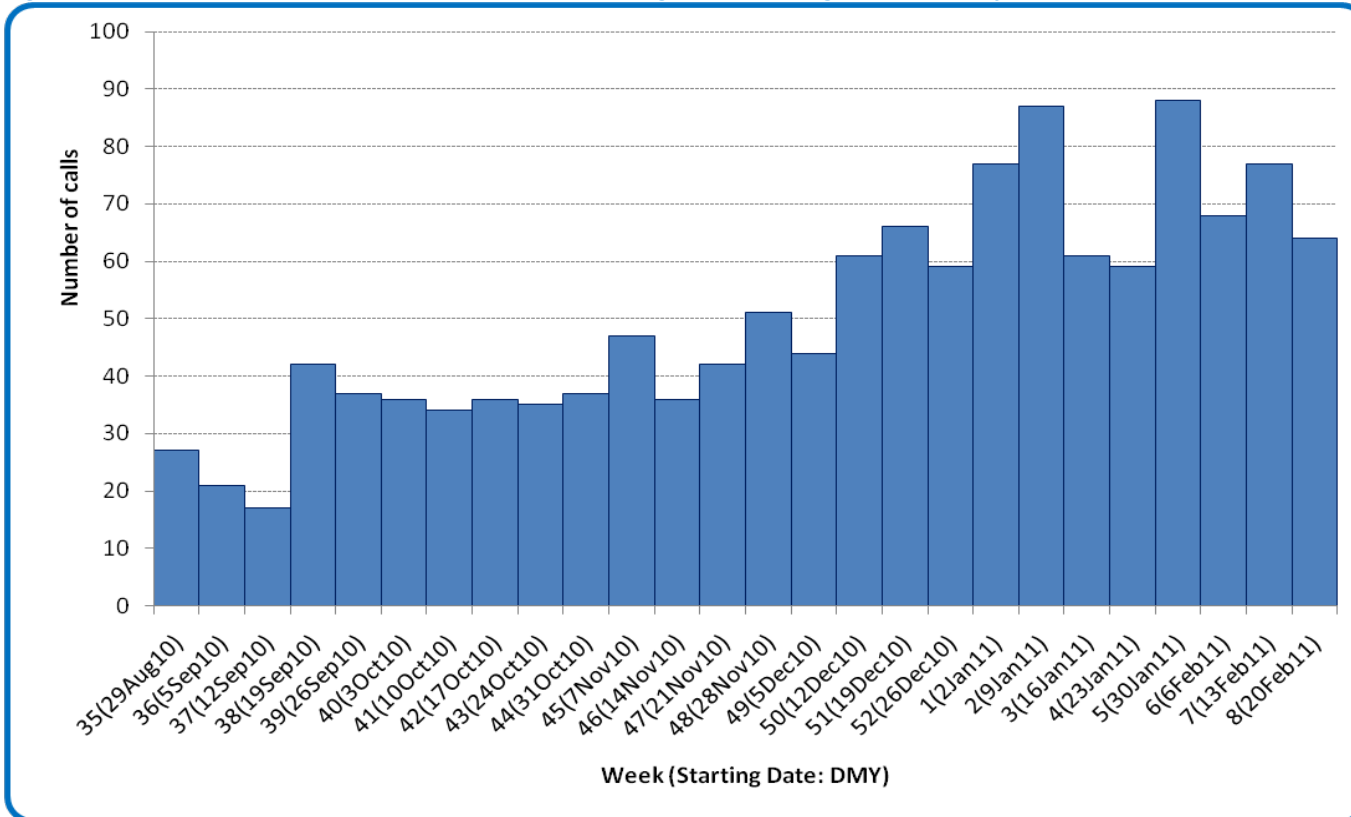
Figure 4D: Respiratory outbreaks, by facility type, by onset week, Central Zone (2010-2011; school outbreaks may not have a laboratory confirmation)



Source: Alberta Outbreak Reporting Form as of 23:59 on Feb 26, 2011.
For more information on data definitions and sources see [Annex: Data Notes section at the end of this report](#). LTC stands for long term care facility.

[Back to start of section](#)

Figure 4E: Number of calls to Health Link Alberta for cough or breathing difficulties, by week, Central Zone (2010-11)



Source: Sharp Focus - Health Link Alberta - via Alberta Real Time Syndromic Surveillance Net (ARTSSN) as of 23:59 on Feb 26, 2011. For more information on data definitions and sources see [Annex: Data Notes section at the end of this report](#)

SURVEILLANCE AND HEALTH STATUS ASSESSMENT

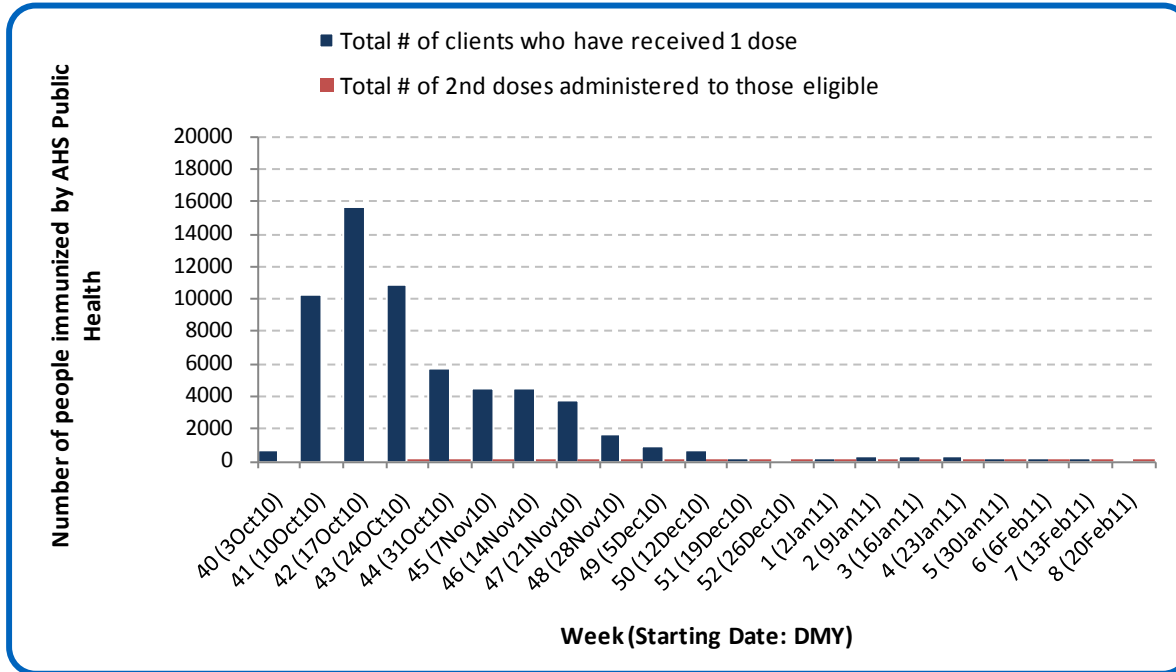
Public Health Surveillance

Report Date: March 1, 2011

An influenza report targeted to the general public is available at: <http://www.health.alberta.ca/health-info/influenza-evidence.html>

[Back to start of section](#)

Figure 4F: Number immunized by AHS (Public Health), by week, Central Zone (2010-2011)



Source: AHS Zones (doses do not include those delivered by external providers)
 Note: Immunization coverage rates will be reported at the end of the influenza season
 For more information on data definitions and sources see [Annex: Data Notes section at the end of this report](#)

[Back to start of section](#)

Table 4C: AHS (Public Health) delivered influenza immunizations (with cumulative totals), by priority group, Central Zone (2010-2011)

Priority Group	Number Immunized (Week 8 – Feb 20-26, 2011)	Cumulative Number Immunized (since Oct 3, 2010)
Long term care staff	1	419
Health care workers	4	2,599
Pregnant women	0	427
Residents of long term care	0	1,104
65 years of age and over	0	22,150
All children 6 months up to and including 23 months*	Dose #1	37
	Dose #2	50
All children 24 months up to and including 59 months*	Dose #1	7
	Dose #2	3
High risk: 5 years up to and including 8 years*	Dose #1	0
	Dose #2	0
High risk: 9 years up to and including 64 years	4	6,869
Healthy: 5 years up to and including 8 years*	Dose #1	10
	Dose #2	3
Healthy: 9 years up to and including 64 years	42	20,745
Total number of clients who have received 1 dose	105	61,508
Total number of 2nd doses administered to those eligible*	56	1,212

Source: AHS Zones (doses do not include those delivered by external providers)

*Children under 9 years of age who have not received at least one dose of seasonal influenza vaccine in past years require two doses, given at least four weeks apart.

Note: Immunization coverage rates will be reported at the end of the influenza season

For more information on data definitions and sources see [Annex: Data Notes section at the end of this report](#)

SURVEILLANCE AND HEALTH STATUS ASSESSMENT

Public Health Surveillance

Report Date: March 1, 2011

An influenza report targeted to the general public is available at: <http://www.health.alberta.ca/health-info/influenza-evidence.html>

[Back to start of section](#)

Table 4D: Influenza immunizations delivered by external partners, by priority group, Central Zone (Oct 3-Dec 31, 2010)

Priority Group	# Immunized Oct 3-Dec 31, 2010	
Long term care staff	827	
Health care workers	5,744	
Pregnant women	8	
Residents of long term care	1,748	
65 years of age and over	4,063	
All children 6 months up to and including 23 months*	Dose #1	1
	Dose #2**	0
All children 24 months up to and including 59 months*	Dose #1	4
	Dose #2**	0
High risk: 5 years up to and including 8 years*	Dose #1	8
	Dose #2**	0
High risk: 9 years up to and including 64 years	1,609	
Healthy: 5 years up to and including 8 years*	Dose #1	15
	Dose #2**	0
Healthy: 9 years up to and including 64 years	3,762	
Total number of clients who have received 1 dose	17,789	
Total number of 2nd doses administered to those eligible*	0	

Source: AHS Zones (zones are required to report doses of seasonal influenza vaccine administered by community and other providers (e.g. physicians, pharmacists, LTC, WHS/OHS programs) twice during the influenza season. These numbers are from the first report (for doses delivered from Oct 3 to Dec 31, 2010). The remaining doses will be reported at a later date.

*Children under 9 years of age who have not received at least one dose of seasonal influenza vaccine in past years require two doses, given at least four weeks apart.

**In some cases, it was not possible to separate dose 1's from dose 2's. Therefore, dose 1 category may contain some 2nd doses.

Note: Immunization coverage rates will be reported at the end of the influenza season

For more information on data definitions and sources see [Annex: Data Notes section at the end of this report](#)

SURVEILLANCE AND HEALTH STATUS ASSESSMENT

Public Health Surveillance

Report Date: March 1, 2011

An influenza report targeted to the general public is available at: <http://www.health.alberta.ca/health-info/influenza-evidence.html>

SECTION 5: ZONE 4 – EDMONTON

[Back to first page](#)

Summary

Generally, respiratory virus activity remains steady in Edmonton Zone, with most indicators at high levels compared to previous levels this season.

Laboratory Data (see [Figure 5A](#), [Figure 5B](#), [Figure 5C](#), [Table 5A](#) & [Table 5B](#))

RSV activity continues to decrease in Edmonton Zone. Since the end of August, 2010 there have been a total of 241 cases of influenza confirmed in this part of the province. At this point in the season, the age-specific rate for confirmed influenza (all types) for infants less than 2 years of age is higher compared to other age groups, at 13 per 10,000 (compared to less than 6 per 10,000 for all other age groups).

Outbreaks (see [Figure 5D](#))

Since the last report, one influenza B outbreak has been reported in a child care facility. It had an attack rate of 21%.

Health Link Alberta Calls (see [Figure 5E](#))

The number of calls to Health Link Alberta by residents of Edmonton Zone for cough or breathing difficulties was 6% lower in Week 8 (Feb 20-26, 2011) compared to the previous week.

Emergency Department/Urgent Care Center Visits and Hospital Admissions (See [Figure 5F](#))

The number of visits by patients with ILI symptoms at the nine emergency departments/urgent care centers in Edmonton Zone remained unchanged in Week 8 (Feb 20-26, 2011) compared to Week 7. The percentage of ILI-related visits remained at 7% of all visits screened for ILI symptoms, which is the highest percentage observed this season. Hospital admissions for the same reason were 20% lower in Week 8 than in Week 7 at these facilities.

Similarly, the number of visits with cough/congestion symptoms remained unchanged for the same period at the same emergency departments/urgent care centers in Edmonton Zone. The percentage of visits with cough/congestion symptoms remained at just above 5% of all ED visits. Hospital admissions of patients with cough/congestion symptoms increased by 6% in Week 8 compared to the previous week.

Sentinel Physician Office Visits

The combined percentage of ILI- and LRTI-related visits to sentinel physician offices by residents of Edmonton Zone was 62% higher in Week 7 (Feb 13-19, 2011) than it was in Week 6, as the percentage of ILI- and LRTI-related visits both increased (particularly LRTI-related visits). This trend coincides with the large increase in ILI-related visits to emergency departments seen in Week 7 in this Zone.

SURVEILLANCE AND HEALTH STATUS ASSESSMENT

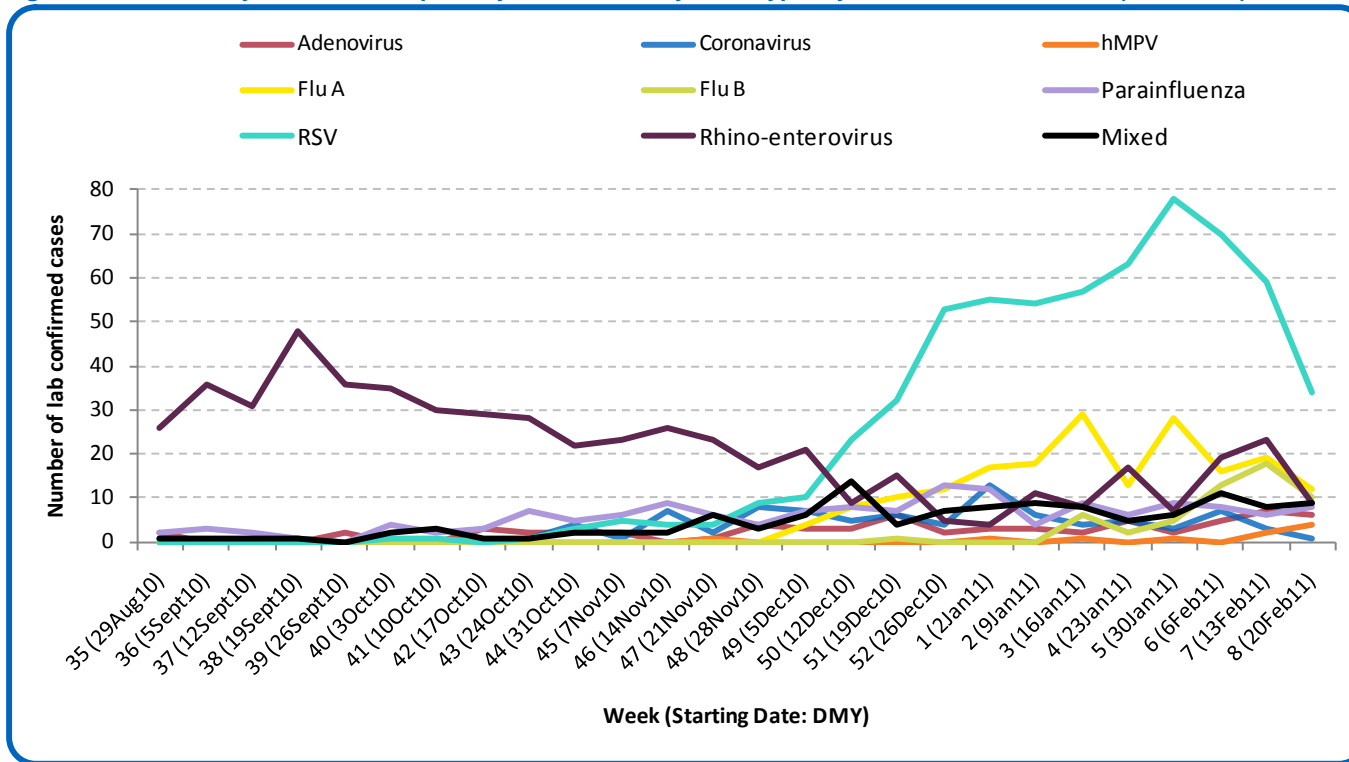
Public Health Surveillance

Report Date: March 1, 2011

An influenza report targeted to the general public is available at: <http://www.health.alberta.ca/health-info/influenza-evidence.html>

[Back to start of section](#)

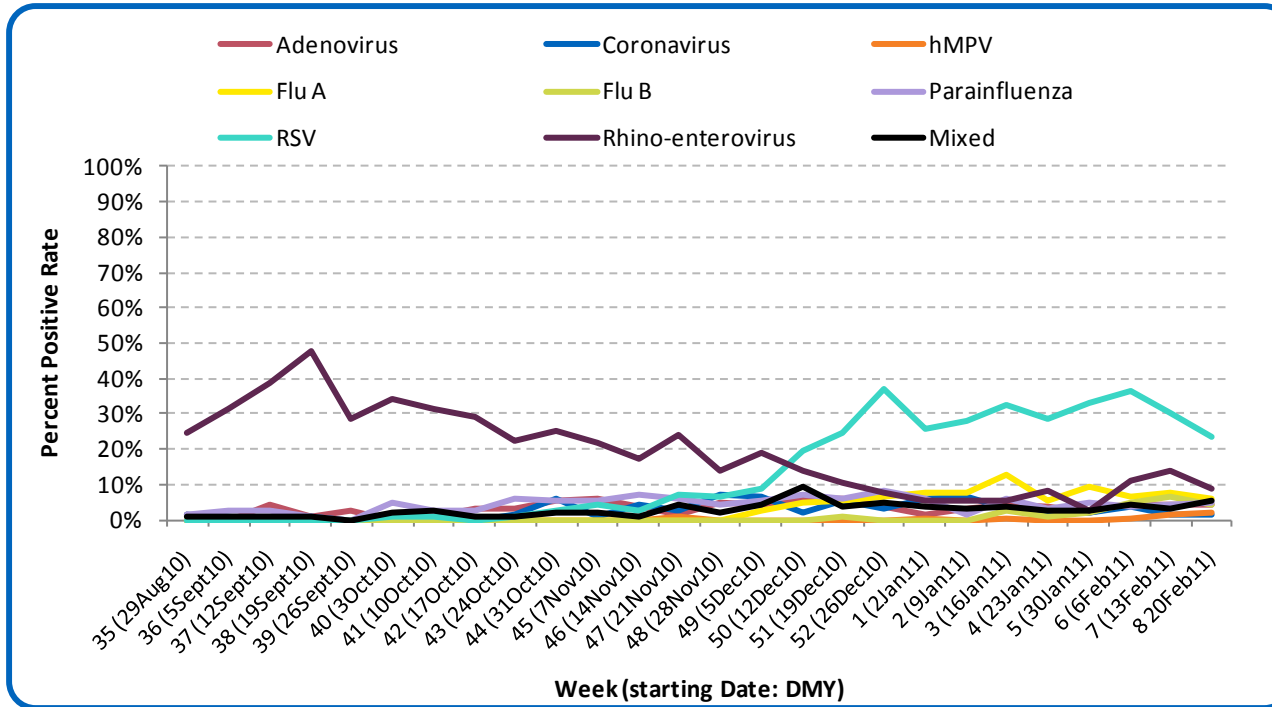
Figure 5A: Laboratory confirmed respiratory virus cases, by virus type, by week, Edmonton Zone (2010-2011)



Sources: DIAL – Provincial Laboratory and the Outbreak Response Toolkit (includes cases with positive respiratory specimens received on or before Feb 26, 2011). For more information on data definitions and sources see [Annex: Data Notes section at the end of this report](#)

[Back to start of section](#)

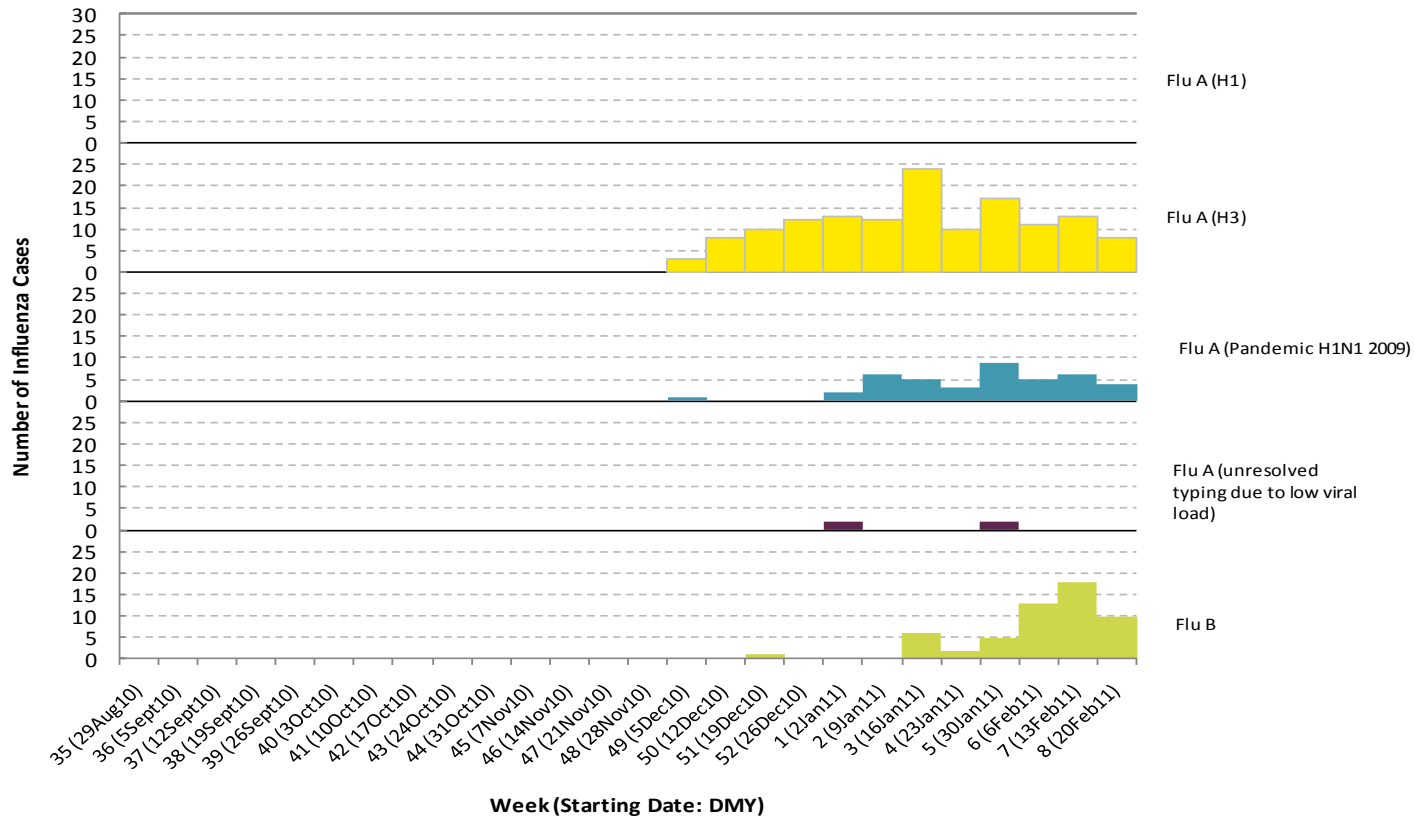
Figure 5B: Respiratory specimen percent positive rates, by virus type, by week, Edmonton Zone (2010-2011)



Source: DIAL – Provincial Laboratory (includes cases with positive respiratory specimens received on or before Feb 26, 2011)
For more information on data definitions and sources see [Annex: Data Notes section at the end of this report](#)

[Back to start of section](#)

Figure 5C: Laboratory confirmed influenza cases, by subtype, by week specimen received, Edmonton Zone (2010-2011)



*Note: 4 specimens were positive for influenza A or B and one or more other virus type(s).
 Source: Outbreak Response Toolkit (includes cases with positive respiratory specimens received on or before Feb 26, 2011).
 For more information on data definitions and sources see [Annex: Data Notes section at the end of this report](#)

SURVEILLANCE AND HEALTH STATUS ASSESSMENT

Public Health Surveillance

Report Date: March 1, 2011

An influenza report targeted to the general public is available at: <http://www.health.alberta.ca/health-info/influenza-evidence.html>

[Back to start of section](#)

Table 5A: New influenza cases (and age specific rates), by subtype, by age group, Edmonton Zone (Week 7: Feb 13-19, 2011)

	Flu A (Seasonal-H1)		Flu A (Seasonal-H3)		Flu A (Pandemic H1N1 2009)		Flu A (unresolved typing due to low viral load)		Flu B		Total	
	#	Rate (per 10,000)	#	Rate (per 10,000)	#	Rate (per 10,000)	#	Rate (per 10,000)	#	Rate (per 10,000)	#	Rate (per 10,000)
0 to <2 years	0	0.0	3	1.0	1	0.3	0	0.0	2	0.7	6	2.0
2 to <5 years	0	0.0	1	0.2	1	0.2	0	0.0	2	0.5	4	1.0
5 to <9 years	0	0.0	1	0.2	0	0.0	0	0.0	1	0.2	2	0.4
9 to <18 years	0	0.0	1	0.1	1	0.1	0	0.0	4	0.3	6	0.5
18 to <65 years	0	0.0	2	<0.1	1	<0.1	0	0.0	1	<0.1	4	0.1
65 to <75 years	0	0.0	0	0.0	0	0.0	0	0.0	0	0.0	0	0.0
75+ years	0	0.0	0	0.0	0	0.0	0	0.0	0	0.0	0	0.0
Total	0	0.0	8	0.1	4	<0.1	0	0.0	10	0.1	22	0.2

Table 5B: Cumulative influenza cases (and age specific rates), by subtype, by age group, Edmonton Zone (Aug 29, 2010 – Feb 26, 2011)

	Flu A (Seasonal-H1)		Flu A (Seasonal-H3)		Flu A (Pandemic H1N1 2009)		Flu A (unresolved typing due to low viral load)		Flu B		Total	
	#	Rate (per 10,000)	#	Rate (per 10,000)	#	Rate (per 10,000)	#	Rate (per 10,000)	#	Rate (per 10,000)	#	Rate (per 10,000)
0 to <2 years	0	0.0	23	7.6	7	2.3	1	0.3	8	2.7	39	13.0
2 to <5 years	0	0.0	13	3.1	2	0.5	1	0.2	8	1.9	24	5.8
5 to <9 years	0	0.0	7	1.4	3	0.6	0	0.0	9	1.7	19	3.7
9 to <18 years	0	0.0	4	0.3	2	0.2	0	0.0	18	1.4	24	1.9
18 to <65 years	0	0.0	55	0.7	27	0.4	1	<0.1	9	0.1	92	1.2
65 to <75 years	0	0.0	8	1.2	0	0.0	0	0.0	1	0.1	9	1.3
75+ years	0	0.0	31	5.2	0	0.0	1	0.2	2	0.3	34	5.8
Total	0	0.0	141	1.2	41	0.4	4	<0.1	55	0.5	241	2.1

Source for tables 5A & 5B: Outbreak Response Toolkit (includes cases with positive respiratory specimens received on or before Feb 26, 2011).

Population data values used to calculate rates are for June 30, 2009 and are estimated using actual population values from the Alberta Health Care Insurance Plan (AHCIP) Registration File as of March 31, 2009.

For more information on data definitions and sources see [Annex: Data Notes section at the end of this report](#)

SURVEILLANCE AND HEALTH STATUS ASSESSMENT

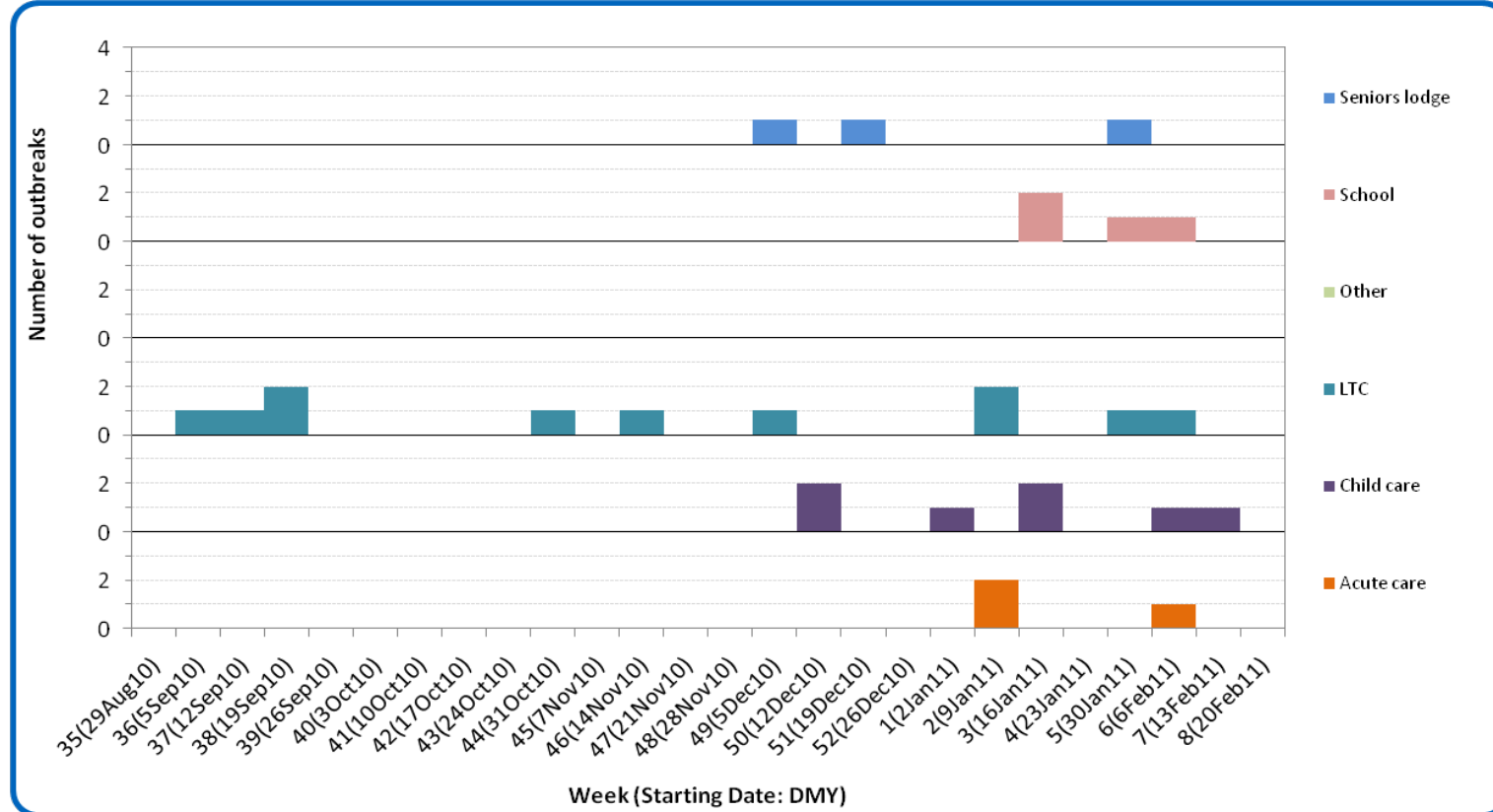
Public Health Surveillance

Report Date: March 1, 2011

An influenza report targeted to the general public is available at: <http://www.health.alberta.ca/health-info/influenza-evidence.html>

[Back to start of section](#)

Figure 5D: Respiratory outbreaks, by facility type, by onset week, Edmonton Zone (2010-2011; school outbreaks may not have a laboratory confirmation)



Source: Alberta Outbreak Reporting Form as of 23:59 on Feb 26, 2011. LTC stands for long term care facility. For more information on data definitions and sources see [Annex: Data Notes section at the end of this report](#)

SURVEILLANCE AND HEALTH STATUS ASSESSMENT

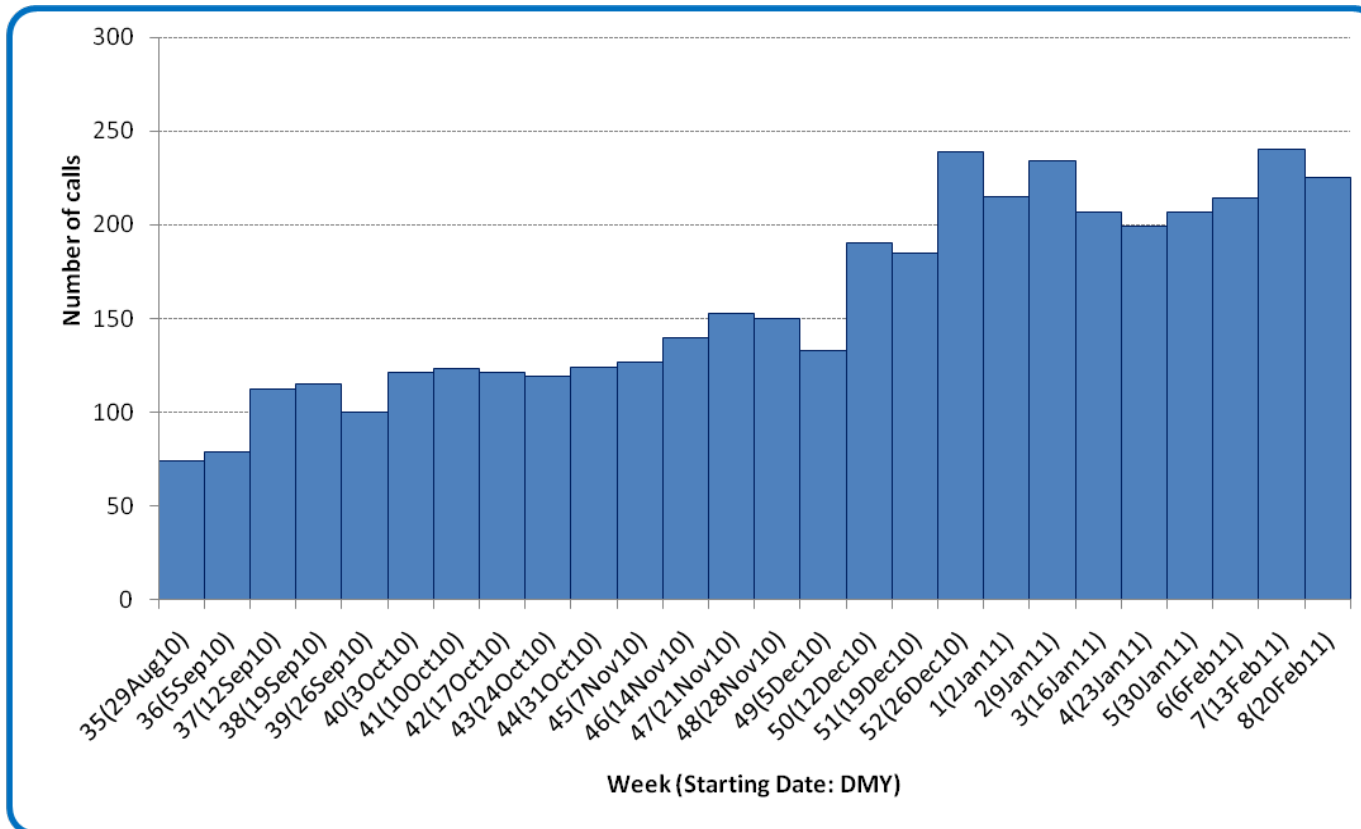
Public Health Surveillance

Report Date: March 1, 2011

An influenza report targeted to the general public is available at: <http://www.health.alberta.ca/health-info/influenza-evidence.html>

[Back to start of section](#)

Figure 5E: Number of calls to Health Link Alberta for cough or breathing difficulties, by week, Edmonton Zone (2010-11)



Source: Sharp Focus - Health Link Alberta - via Alberta Real Time Syndromic Surveillance Net (ARTSSN) as of 23:59 on Feb 26, 2011. For more information on data definitions and sources see [Annex: Data Notes section at the end of this report](#)

SURVEILLANCE AND HEALTH STATUS ASSESSMENT

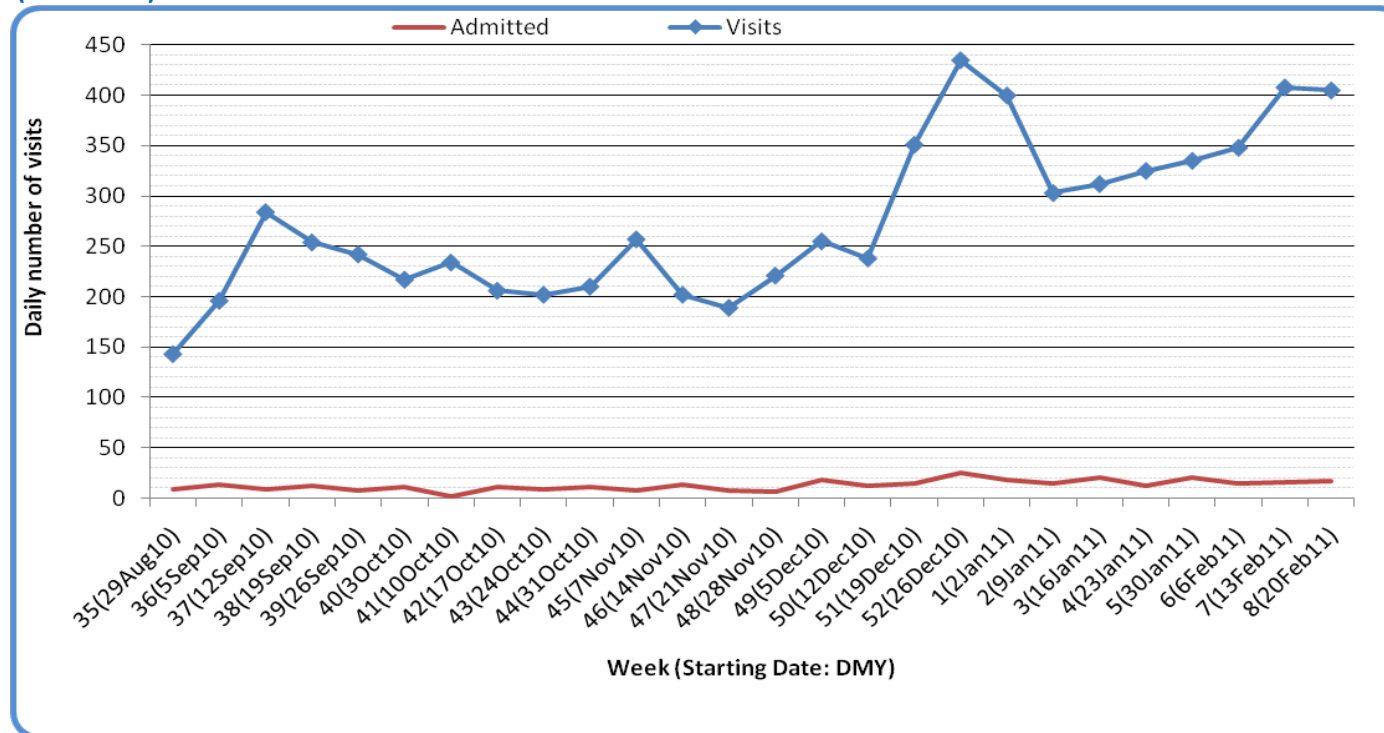
Public Health Surveillance

Report Date: March 1, 2011

An influenza report targeted to the general public is available at: <http://www.health.alberta.ca/health-info/influenza-evidence.html>

[Back to start of section](#)

Figure 5F: Visits to emergency departments/urgent care centers for cough/congestion and admissions to hospitals, Edmonton Zone, by visit week (2010-2011)



Source: Alberta Real Time Syndromic Surveillance (ARTSSN) as of 23:59 on Feb 26, 2011.
For more information on data definitions and sources see [Annex: Data Notes section at the end of this report](#)

SURVEILLANCE AND HEALTH STATUS ASSESSMENT

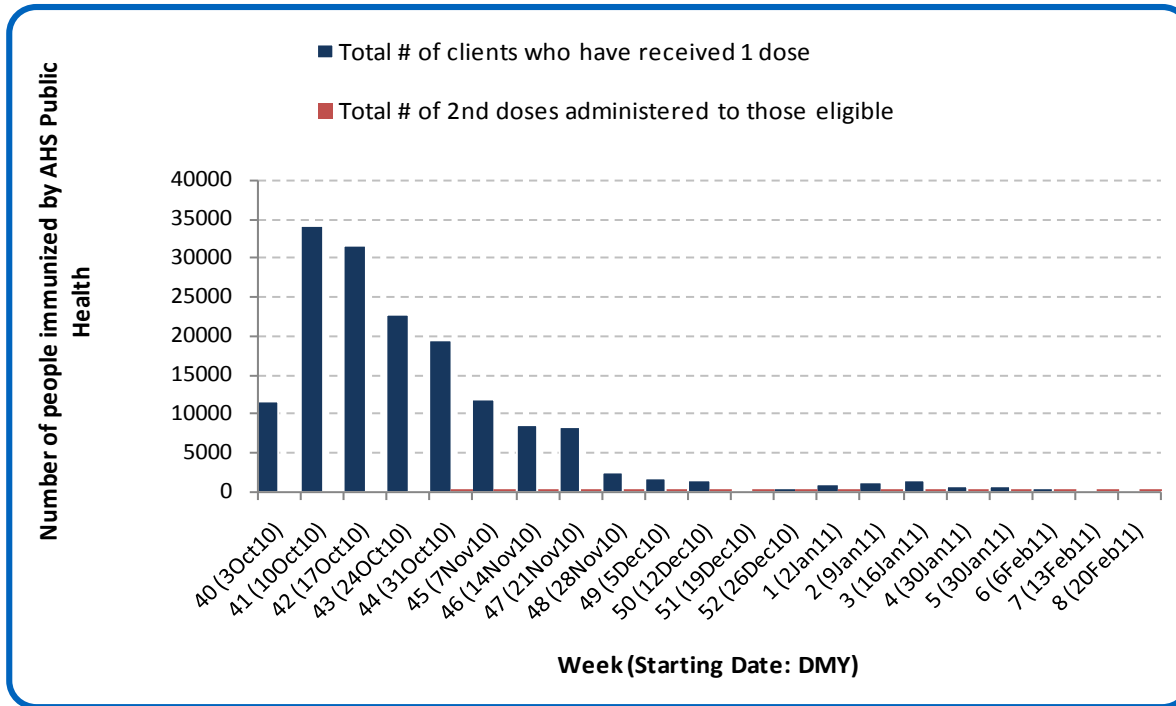
Public Health Surveillance

Report Date: March 1, 2011

An influenza report targeted to the general public is available at: <http://www.health.alberta.ca/health-info/influenza-evidence.html>

[Back to start of section](#)

Figure 5G: Number immunized by AHS (Public Health), by week, Edmonton Zone (2010-2011)



Source: AHS Zones (doses do not include those delivered by external providers)
 Note: Immunization coverage rates will be reported at the end of the influenza season
 For more information on data definitions and sources see [Annex: Data Notes section at the end of this report](#)

[Back to start of section](#)

Table 5C: AHS (Public Health) delivered influenza immunizations (with cumulative totals), by priority group, Edmonton Zone (2010-2011)

Priority Group	Number Immunized (Week 8 – Feb 20-26, 2011)	Cumulative Number Immunized (since Oct 3, 2010)
Long term care staff	0	321
Health care workers	4	4,790
Pregnant women	8	1,430
Residents of long term care	0	1,047
65 years of age and over	8	48,465
All children 6 months up to and including 23 months*	Dose #1	74
	Dose #2	69
All children 24 months up to and including 59 months*	Dose #1	22
	Dose #2	5
High risk: 5 years up to and including 8 years*	Dose #1	6
	Dose #2	1
High risk: 9 years up to and including 64 years	15	17,104
Healthy: 5 years up to and including 8 years*	Dose #1	16
	Dose #2	2
Healthy: 9 years up to and including 64 years	104	67,555
Total number of clients who have received 1 dose	257	161,124
Total number of 2nd doses administered to those eligible*	77	2,613

Source: AHS Zones (doses do not include those delivered by external providers)

*Children under 9 years of age who have not received at least one dose of seasonal influenza vaccine in past years require two doses, given at least four weeks apart.

Note: Immunization coverage rates will be reported at the end of the influenza season

For more information on data definitions and sources see [Annex: Data Notes section at the end of this report](#)

SURVEILLANCE AND HEALTH STATUS ASSESSMENT

Public Health Surveillance

Report Date: March 1, 2011

An influenza report targeted to the general public is available at: <http://www.health.alberta.ca/health-info/influenza-evidence.html>

[Back to start of section](#)

Table 5D: Influenza immunizations delivered by external partners, by priority group, Edmonton Zone (Oct 3-Dec 31, 2010)

Priority Group	# Immunized Oct 3-Dec 31, 2010	
Long term care staff	926	
Health care workers	8,917	
Pregnant women	166	
Residents of long term care	1,094	
65 years of age and over	15,950	
All children 6 months up to and including 23 months*	Dose #1	295
	Dose #2**	48
All children 24 months up to and including 59 months*	Dose #1	504
	Dose #2**	27
High risk: 5 years up to and including 8 years*	Dose #1	848
	Dose #2**	2
High risk: 9 years up to and including 64 years	10,373	
Healthy: 5 years up to and including 8 years*	Dose #1	915
	Dose #2**	5
Healthy: 9 years up to and including 64 years	22,493	
Total number of clients who have received 1 dose	62,481	
Total number of 2nd doses administered to those eligible*	82	

Source: AHS Zones (zones are required to report doses of seasonal influenza vaccine administered by community and other providers (e.g. physicians, pharmacists, LTC, WHS/OHS programs) twice during the influenza season. These numbers are from the first report (for doses delivered from Oct 3 to Dec 31, 2010). The remaining doses will be reported at a later date.

*Children under 9 years of age who have not received at least one dose of seasonal influenza vaccine in past years require two doses, given at least four weeks apart.

**In some cases, it was not possible to separate dose 1's from dose 2's. Therefore, dose 1 category may contain some 2nd doses.

Note: Immunization coverage rates will be reported at the end of the influenza season

For more information on data definitions and sources see [Annex: Data Notes section at the end of this report](#)

SURVEILLANCE AND HEALTH STATUS ASSESSMENT

Public Health Surveillance

Report Date: March 1, 2011

An influenza report targeted to the general public is available at: <http://www.health.alberta.ca/health-info/influenza-evidence.html>

SECTION 6: ZONE 5 – NORTH

[Back to first page](#)

Summary

With the exception of influenza B, laboratory data for several respiratory viruses indicate that overall activity may be decreasing in North Zone, however the number of calls to Health Link Alberta remain high compared to previous levels seen this season.

Laboratory Data (see [Figure 6A](#), [Figure 6B](#), [Figure 6C](#), [Table 6A](#) & [Table 6B](#))

RSV and influenza are currently the predominant viruses circulating in North Zone. While the proportion of influenza type B cases identified among all influenza cases decreased in Week 8 (Feb 20-26, 2011) compared to the previous week in most areas of the province, it increased in North Zone. The total number of confirmed influenza cases in North Zone this season is 113. At this point in the season, the age specific rate for confirmed influenza among infants under the age of 2 years is much higher than the rate for any other age group (17 per 10,000 compared to 7 or less per 10,000). In this area of the province, nearly half (43%) of the cases in this age group have been caused by influenza A (H1N1) 2009.

Outbreaks (see [Figure 6D](#))

Since the last report, there have been no new respiratory outbreaks reported in North Zone. The outbreak in a long term care facility described in the last report is still pending laboratory confirmation. The preliminary attack rate in that outbreak was 16%.

Health Link Alberta Calls (see [Figure 6E](#))

The number of calls to Health Link Alberta by residents of North Zone for cough or breathing difficulties was 10% higher in Week 8 (Feb 20-26, 2011) compared to the previous week. This indicator is currently at the highest level it has been this season.

Emergency Department/Urgent Care Center Visits and Hospital Admissions

There are no data available for the North Zone.

Sentinel Physician Office Visits

The combined percentage of ILI- and LRTI-related visits to sentinel physician offices by residents of North Zone was more than 3 times higher in Week 7 (Feb 13-19, 2011) than it was in Week 6, which was 16% of all visits in two reporting doctors' office.

SURVEILLANCE AND HEALTH STATUS ASSESSMENT

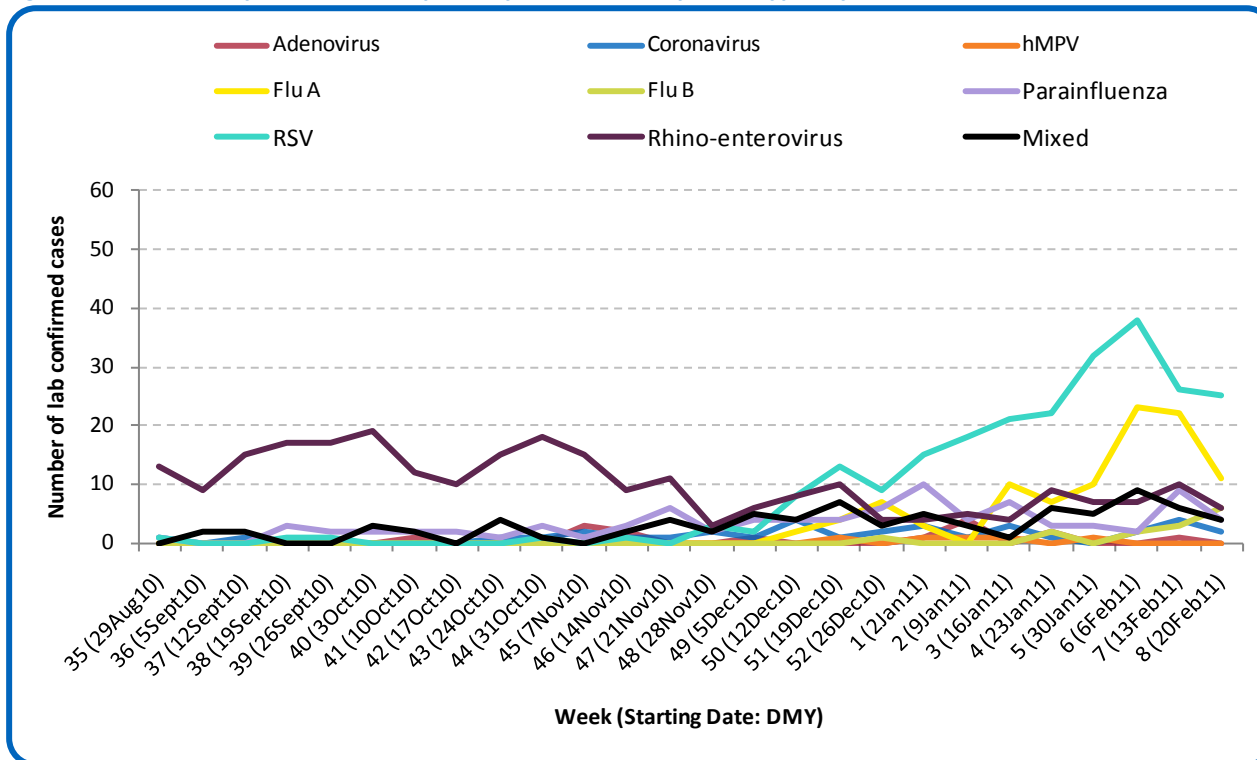
Public Health Surveillance

Report Date: March 1, 2011

An influenza report targeted to the general public is available at: <http://www.health.alberta.ca/health-info/influenza-evidence.html>

[Back to start of section](#)

Figure 6A: Laboratory confirmed respiratory virus cases, by virus type, by week, North Zone (2010-2011)



Sources: DIAL – Provincial Laboratory and the Outbreak Response Toolkit (includes cases with positive respiratory specimens received on or before Feb 26, 2011). For more information on data definitions and sources see [Annex: Data Notes section at the end of this report](#)

SURVEILLANCE AND HEALTH STATUS ASSESSMENT

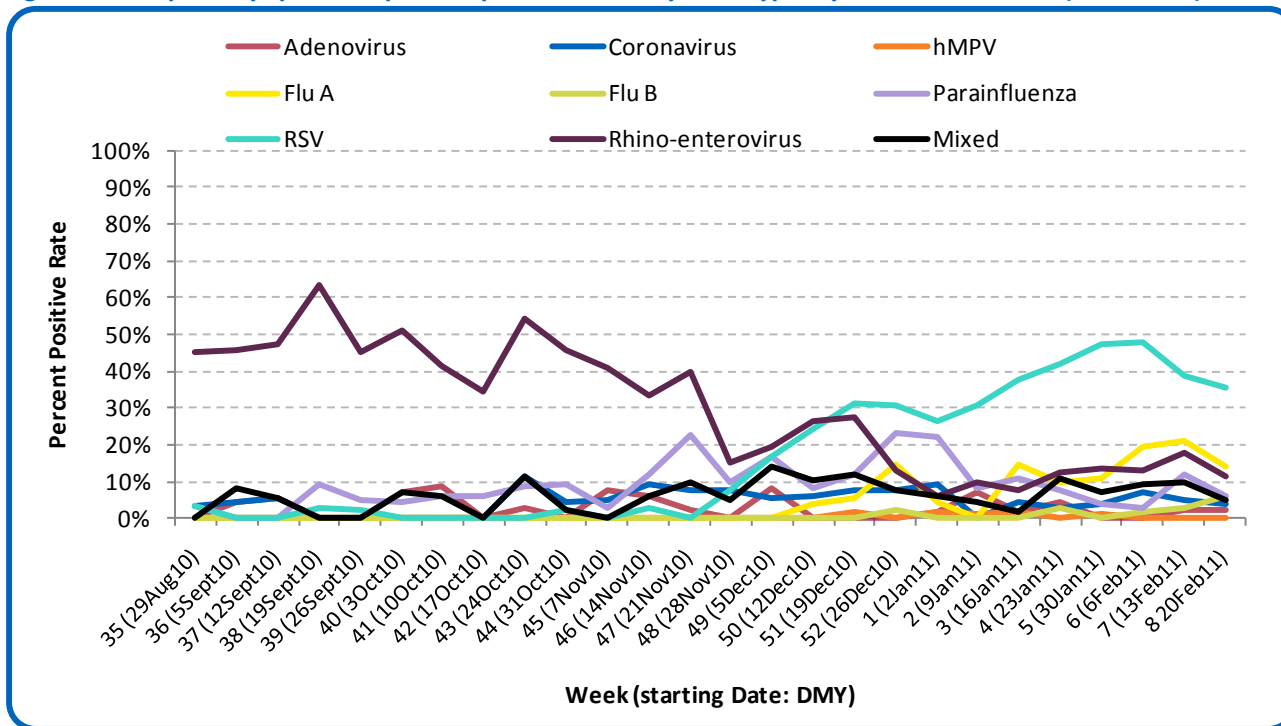
Public Health Surveillance

Report Date: March 1, 2011

An influenza report targeted to the general public is available at: <http://www.health.alberta.ca/health-info/influenza-evidence.html>

[Back to start of section](#)

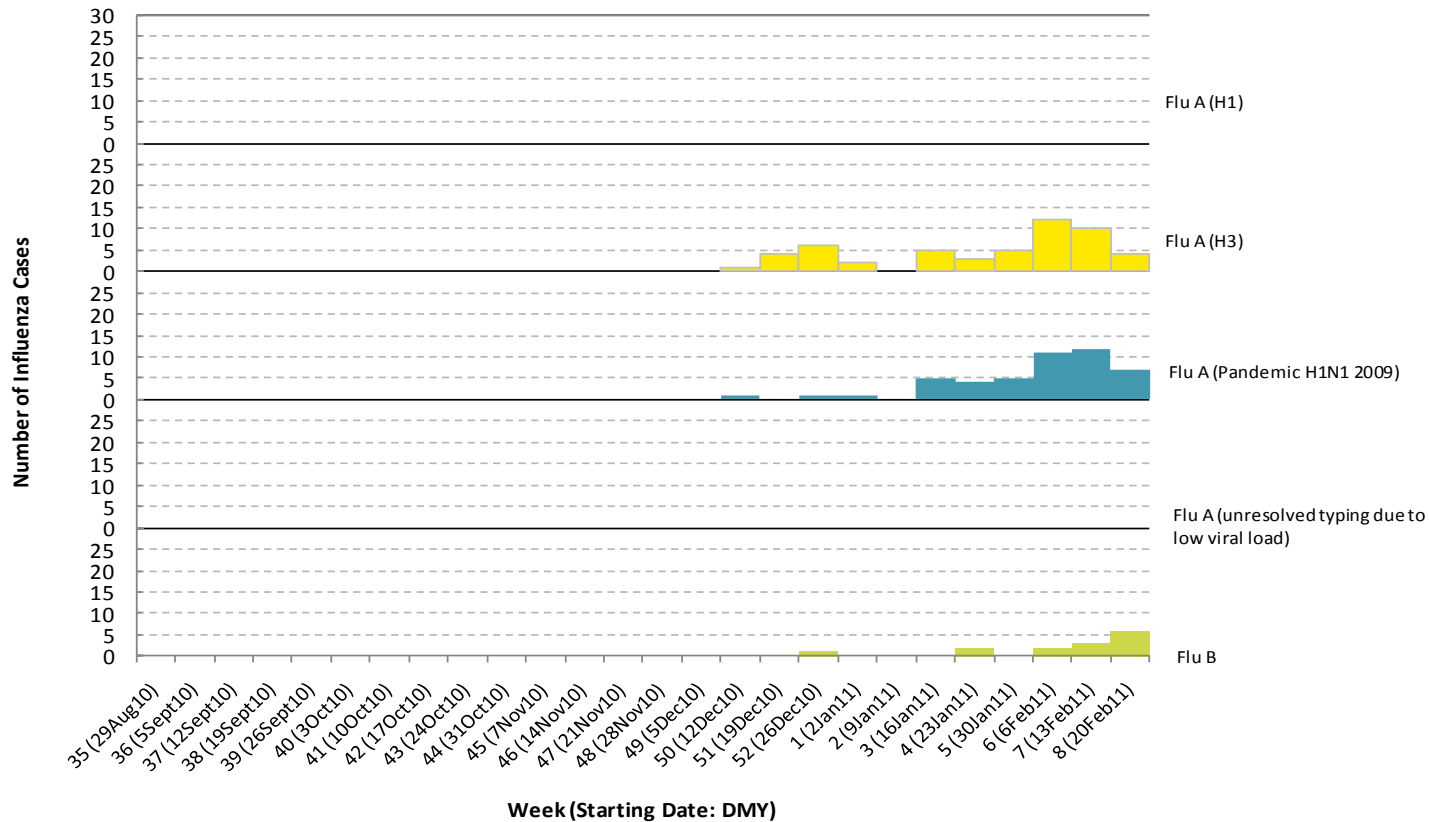
Figure 6B: Respiratory specimen percent positive rates, by virus type, by week, North Zone (2010-2011)



Source: DIAL – Provincial Laboratory (includes cases with positive respiratory specimens received on or before Feb 26, 2011)
For more information on data definitions and sources see [Annex: Data Notes section at the end of this report](#)

[Back to start of section](#)

Figure 6C: Laboratory confirmed influenza cases, by subtype, by week specimen received, North Zone (2010-2011)



*Note: 6 specimens were positive for influenza A and one or more other virus type(s).
 Source: Outbreak Response Toolkit (includes cases with positive respiratory specimens received on or before Feb 26, 2011).
 For more information on data definitions and sources see [Annex: Data Notes section at the end of this report](#)

SURVEILLANCE AND HEALTH STATUS ASSESSMENT

Public Health Surveillance

Report Date: March 1, 2011

An influenza report targeted to the general public is available at: <http://www.health.alberta.ca/health-info/influenza-evidence.html>

[Back to start of section](#)

Table 6A: New influenza cases (and age specific rates), by subtype, by age group, North Zone (Week 7: Feb 13-19, 2011)

	Flu A (Seasonal-H1)		Flu A (Seasonal-H3)		Flu A (Pandemic H1N1 2009)		Flu A (unresolved typing due to low viral load)		Flu B		Total	
	#	Rate (per 10,000)	#	Rate (per 10,000)	#	Rate (per 10,000)	#	Rate (per 10,000)	#	Rate (per 10,000)	Rate (per 10,000)	
0 to <2 years	0	0.0	0	0.0	0	0.0	0	0.0	2	1.4	2	1.4
2 to <5 years	0	0.0	0	0.0	2	1.0	0	0.0	1	0.5	3	1.6
5 to <9 years	0	0.0	2	0.8	0	0.0	0	0.0	1	0.4	3	1.3
9 to <18 years	0	0.0	0	0.0	1	0.2	0	0.0	1	0.2	2	0.4
18 to <65 years	0	0.0	2	0.1	4	0.1	0	0.0	1	<0.1	7	0.3
65 to <75 years	0	0.0	0	0.0	0	0.0	0	0.0	0	0.0	0	0.0
75+ years	0	0.0	0	0.0	0	0.0	0	0.0	0	0.0	0	0.0
Total	0	0.0	4	0.1	7	0.2	0	0.0	6	0.1	17	0.4

Table 6B: Cumulative influenza cases (and age specific rates), by subtype, by age group, North Zone (Aug 29, 2010-Feb 26, 2011)

	Flu A (Seasonal-H1)		Flu A (Seasonal-H3)		Flu A (Pandemic H1N1 2009)		Flu A (unresolved typing due to low viral load)		Flu B		Total	
	#	Rate (per 10,000)	#	Rate (per 10,000)	#	Rate (per 10,000)	#	Rate (per 10,000)	#	Rate (per 10,000)	Rate (per 10,000)	
0 to <2 years	0	0.0	10	7.2	10	7.2	0	0.0	3	2.2	23	16.6
2 to <5 years	0	0.0	6	3.1	3	1.6	0	0.0	2	1.0	11	5.8
5 to <9 years	0	0.0	9	3.8	5	2.1	0	0.0	2	0.8	16	6.7
9 to <18 years	0	0.0	8	1.4	9	1.6	0	0.0	3	0.5	20	3.5
18 to <65 years	0	0.0	15	0.5	20	0.7	0	0.0	4	0.1	39	1.4
65 to <75 years	0	0.0	1	0.5	0	0.0	0	0.0	0	0.0	1	0.5
75+ years	0	0.0	3	1.9	0	0.0	0	0.0	0	0.0	3	1.9
Total	0	0.0	52	1.2	47	1.1	0	0.0	14	0.3	113	2.6

Source for Tables 6A & 6B: Outbreak Response Toolkit (includes cases with positive respiratory specimens received on or before Feb 26, 2011).

Population data values used to calculate rates are for June 30, 2009 and are estimated using actual population values from the Alberta Health Care Insurance Plan (AHCIP) Registration File as of March 31, 2009.

For more information on data definitions and sources see [Annex: Data Notes section at the end of this report](#)

SURVEILLANCE AND HEALTH STATUS ASSESSMENT

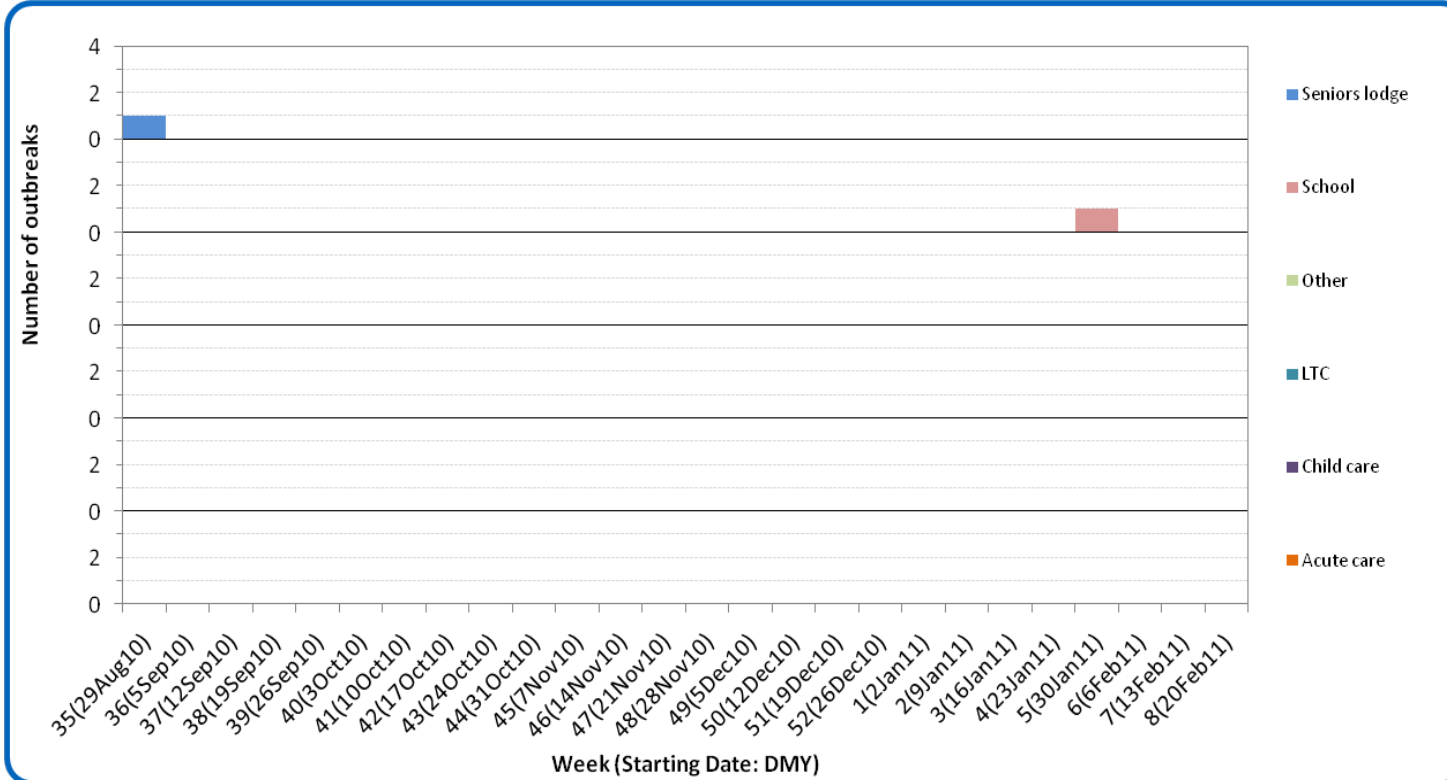
Public Health Surveillance

Report Date: March 1, 2011

An influenza report targeted to the general public is available at: <http://www.health.alberta.ca/health-info/influenza-evidence.html>

[Back to start of section](#)

Figure 6D: Respiratory outbreaks, by facility type, by onset week, North Zone (2010-2011; school outbreaks may not have a laboratory confirmation)



Source: Alberta Outbreak Reporting Form as of 23:59 on Feb 26, 2011. LTC stands for long term care facility. For more information on data definitions and sources see [Annex: Data Notes section at the end of this report](#)

SURVEILLANCE AND HEALTH STATUS ASSESSMENT

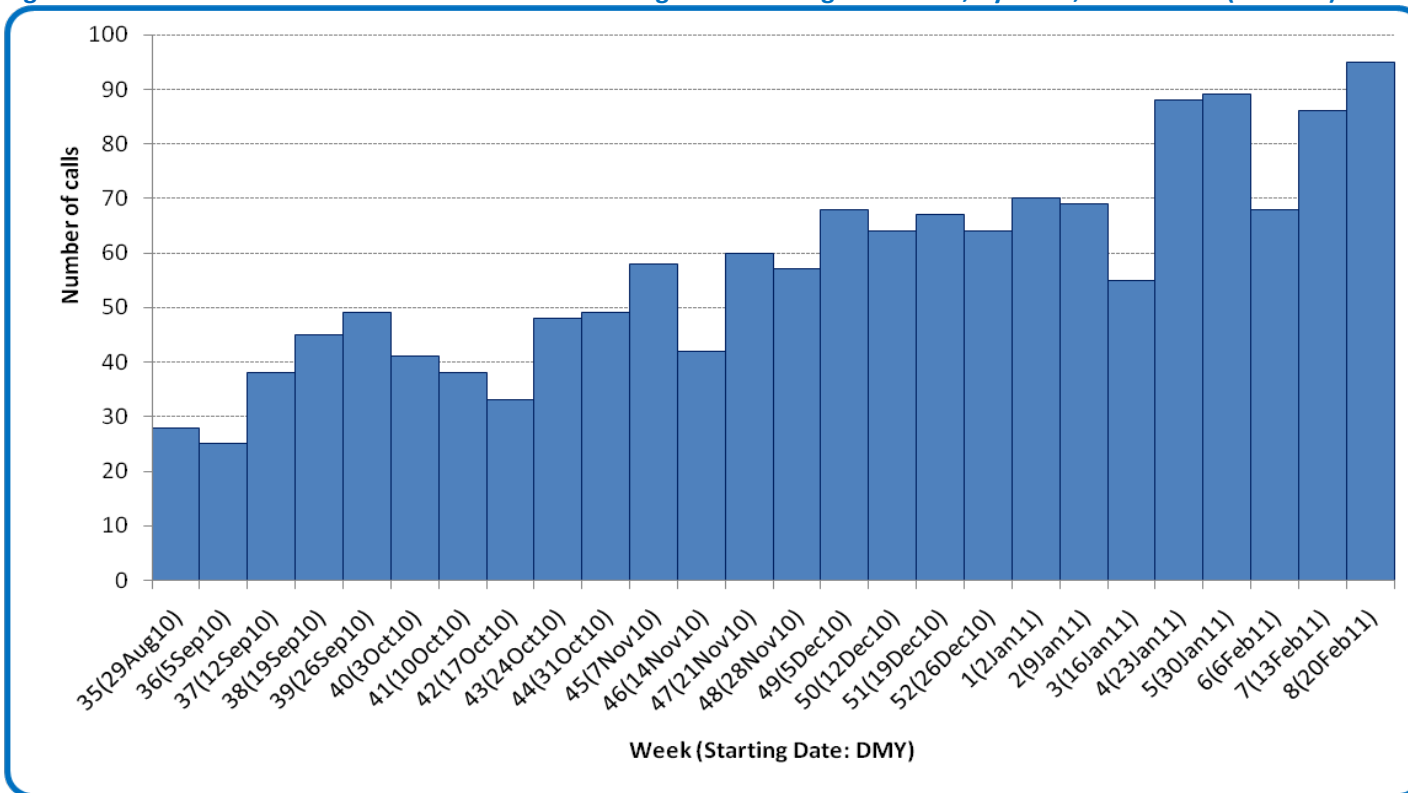
Public Health Surveillance

Report Date: March 1, 2011

An influenza report targeted to the general public is available at: <http://www.health.alberta.ca/health-info/influenza-evidence.html>

[Back to start of section](#)

Figure 6E: Number of calls to Health Link Alberta for cough or breathing difficulties, by week, North Zone (2010-11)



Source: Sharp Focus - Health Link Alberta - via Alberta Real Time Syndromic Surveillance Net (ARTSSN) as of 23:59 on Feb 26, 2011. For more information on data definitions and sources see [Annex: Data Notes section at the end of this report](#)

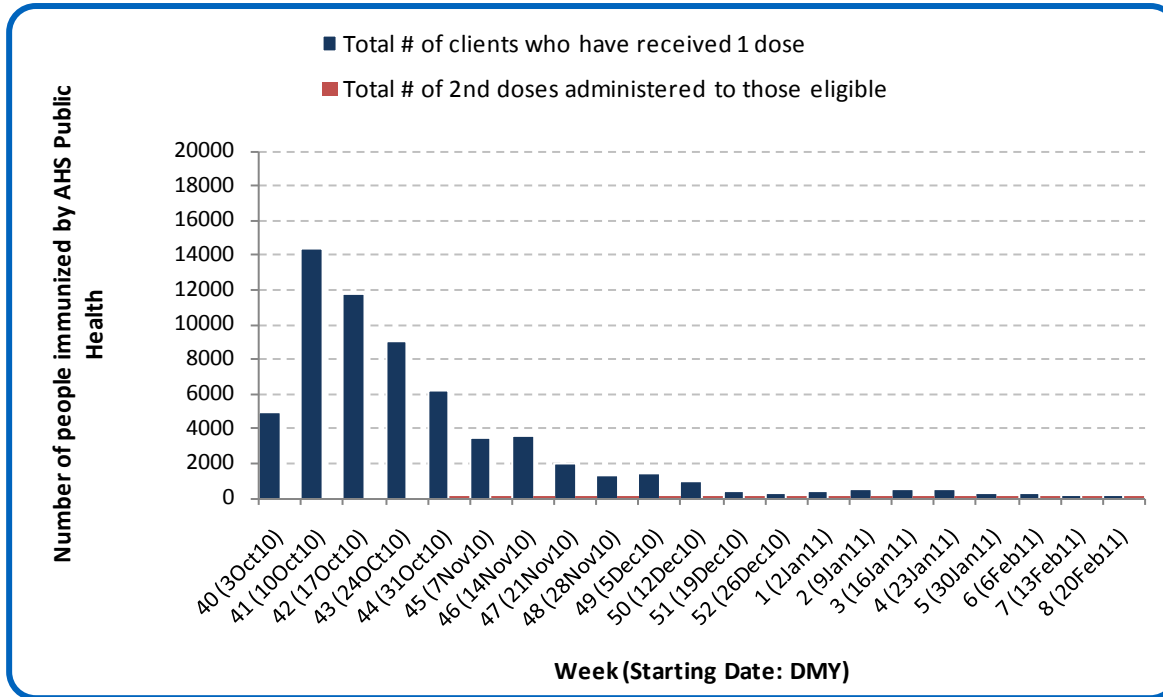
SURVEILLANCE AND HEALTH STATUS ASSESSMENT

Public Health Surveillance
Report Date: March 1, 2011

An influenza report targeted to the general public is available at: <http://www.health.alberta.ca/health-info/influenza-evidence.html>

[Back to start of section](#)

Figure 6F: Number immunized by AHS (Public Health), by week, North Zone (2010-2011)



Source: AHS Zones (doses do not include those delivered by external providers)
 Note: Immunization coverage rates will be reported at the end of the influenza season
 For more information on data definitions and sources see [Annex: Data Notes section at the end of this report](#)

[Back to start of section](#)

Table 6C: AHS (Public Health) delivered influenza immunizations (with cumulative totals), by priority group, North Zone (2010-2011)

Priority Group	# Immunized (Week 8 – Feb 20-26, 2011)	Cumulative Number Immunized (since Oct 3, 2010)
Long term care staff	1	813
Health care workers	7	4,683
Pregnant women	2	565
Residents of long term care	0	1,248
65 years of age and over	6	15,783
All children 6 months up to and including 23 months*	Dose #1	21
	Dose #2	24
All children 24 months up to and including 59 months*	Dose #1	15
	Dose #2	2
High risk: 5 years up to and including 8 years*	Dose #1	2
	Dose #2	0
High risk: 9 years up to and including 64 years	30	7,803
Healthy: 5 years up to and including 8 years*	Dose #1	8
	Dose #2	0
Healthy: 9 years up to and including 64 years	83	23,374
Total number of clients who have received 1 dose	175	62,538
Total number of 2nd doses administered to those eligible*	26	996

Source: AHS Zones (doses do not include those delivered by external providers)

*Children under 9 years of age who have not received at least one dose of seasonal influenza vaccine in past years require two doses, given at least four weeks apart.

Note: Immunization coverage rates will be reported at the end of the influenza season

For more information on data definitions and sources see [Annex: Data Notes section at the end of this report](#)

SURVEILLANCE AND HEALTH STATUS ASSESSMENT

Public Health Surveillance

Report Date: March 1, 2011

An influenza report targeted to the general public is available at: <http://www.health.alberta.ca/health-info/influenza-evidence.html>

[Back to start of section](#)

Table 6D: Influenza immunizations delivered by external partners, by priority group, North Zone (Oct 3-Dec 31, 2010)

Priority Group	# Immunized Oct 3-Dec 31, 2010	
Long term care staff	9	
Health care workers	153	
Pregnant women	4	
Residents of long term care	0	
65 years of age and over	333	
All children 6 months up to and including 23 months*	Dose #1	0
	Dose #2**	0
All children 24 months up to and including 59 months*	Dose #1	1
	Dose #2**	0
High risk: 5 years up to and including 8 years*	Dose #1	0
	Dose #2**	0
High risk: 9 years up to and including 64 years	633	
Healthy: 5 years up to and including 8 years*	Dose #1	2
	Dose #2**	0
Healthy: 9 years up to and including 64 years	3,940	
Total number of clients who have received 1 dose	5,075	
Total number of 2nd doses administered to those eligible*	0	

Source: AHS Zones (zones are required to report doses of seasonal influenza vaccine administered by community and other providers (e.g. physicians, pharmacists, LTC, WHS/OHS programs) twice during the influenza season. These numbers are from the first report (for doses delivered from Oct 3 to Dec 31, 2010). The remaining doses will be reported at a later date.

*Children under 9 years of age who have not received at least one dose of seasonal influenza vaccine in past years require two doses, given at least four weeks apart.

**In some cases, it was not possible to separate dose 1's from dose 2's. Therefore, dose 1 category may contain some 2nd doses.

Note: Immunization coverage rates will be reported at the end of the influenza season

For more information on data definitions and sources see [Annex: Data Notes section at the end of this report](#)

SURVEILLANCE AND HEALTH STATUS ASSESSMENT

Public Health Surveillance

Report Date: March 1, 2011

An influenza report targeted to the general public is available at: <http://www.health.alberta.ca/health-info/influenza-evidence.html>

ANNEX: DATA NOTES

[Back to first page](#)

LABORATORY

Information on laboratory confirmed respiratory virus activity in Alberta is based on data from 2 sources:

- 1) Non-influenza viruses: The Alberta Provincial Public Health Laboratory DIAL system (Data Integration for Alberta Laboratories) – a specimen based system. Cases are determined by rationalizing samples from the same patient with the same virus identified within a 30-day period. The information (i.e. received date) from the first sample identifying the identical virus is used in this report.
- 2) Influenza viruses: The Alberta influenza Case Management System – an influenza case based system.

Both data sources are web-based applications supported by the Canadian Network for Public Health Intelligence.

The data in this report are based on specimens obtained from residents of Alberta; according to the date the specimen was received by the laboratory.

Definition for “mixed” – a single sample where multiple viral organisms were isolated.

INFLUENZA-LIKE ILLNESS

Four data sources are used to provide information on utilization of primary and acute care services by people with Influenza-Like Illness (ILI). *Caution: Each source uses potentially different definitions of ILI.*

1. Primary care summaries are obtained from the TARRANT system. Patients seen by TARRANT physicians may not be representative of the general population. Reported ILI cases represent people seen by TARRANT physicians, according to the date seen by the physician. The percentage of ILI represents the proportion of patients with ILI of all patients seen by the physician.
2. In addition to reporting visits of patients with ILI, TARRANT physicians also report visits with lower respiratory tract infections (LRTI). Each visit is recorded only once, even if a patient has symptoms consistent with ILI and LRTI. The combined ILI- and LRTI-related visits are therefore suggestive of overall respiratory infections in the patient population.
3. Information on visits for ILI in Emergency Departments (ED) and urgent care centers are provided by the Alberta Real Time Syndromic Surveillance Net (ARTSSN) data repository. ILI designation is based on patients being screened in emergency departments with an ILI screening tool. The primary purpose of the ILI screening tool is to implement appropriate infection control measures. The original data sources fed to the ARTSSN data repository are EDIS (Emergency Department Information System) for the Edmonton Zone and REDIS for the Calgary Zone.
4. Health Link Alberta is a 24 hour a day, 7 day a week nurse telephone advice and health information service that provides the public with advice and information about health symptoms and concerns. The original data source for the daily calls to Health Link Alberta for ILI, cough, and breathing difficulties is the Health Link database called Sharp Focus.

SURVEILLANCE AND HEALTH STATUS ASSESSMENT

Public Health Surveillance

Report Date: March 1, 2011

An influenza report targeted to the general public is available at: <http://www.health.alberta.ca/health-info/influenza-evidence.html>

OUTBREAKS

[Back to first page](#)

Upon notification of an outbreak, the *Alberta Health & Wellness/Alberta Health Services* Outbreak Reporting Form (Fillable PDF) is completed by Zone Public Health investigators and sent to *Alberta Health & Wellness and AHS Public Health Surveillance*. The form includes information about the type and location of the outbreak, type of facility, and the causative organism (confirmed or suspected). There may be a delay between the reporting of an outbreak and the identification of the organism. This report includes only those outbreaks that are laboratory confirmed and caused by influenza-like illness viruses; outbreaks that are caused by bacteria (i.e. pertussis, invasive pneumococcal disease) and other types of viruses (i.e. measles, rubella (German measles), chickenpox) are excluded. Also excluded are those outbreaks that have no causative agent identified by the Provincial Laboratory for Public Health or where specimens are not tested or an outbreak with only one infected (confirmed or probable) case during a 7 day period. This follows the same approach of PHAC FluWatch for defining ILI/influenza outbreak. The naming convention of outbreak facilities by FluWatch - "Hospital and residential institutions" - is also adopted. Outbreaks in schools are officially counted in tables or graphs whether there is or not a laboratory confirmation; outbreaks in hospital and residential institutions that are pending for laboratory confirmation are described for information only but not officially presented in graphs or tables in this report.

INFLUENZA IMMUNIZATIONS

Influenza immunization data are reported by AHS zones. Numbers are available to the Public Health Surveillance team at the beginning of the week for the doses administered the previous week (Sunday to Saturday). It includes those doses administered by AHS (Public Health) only. Clients can only exist in one priority group. Immunization coverage rates will be reported at the end of March, 2011.

POPULATION NUMBERS

Population data values used to calculate rates are for June 30, 2009 and are estimated using actual population values from the Alberta Health Care Insurance Plan (AHCIP) Registration File as of March 31, 2009. The following registrants are included: residents of Alberta; 'residents' of Alberta temporarily living elsewhere, such as extended visits or vacations or students attending an educational institute outside of Alberta, or Albertans temporarily (up to four years) working outside Alberta; persons during the first three months after they move from Alberta to another Canadian province; dependants of members of the RCMP and Armed Forces; persons from another country who are working or studying in Alberta on valid visas; and Natives/Aboriginals whose premiums are paid by Health Canada, First Nations and Inuit Health Branch. Not included are: members of the Armed Forces and RCMP; inmates at federal penitentiaries; persons from other provinces during their first three months in Alberta; and persons who have not registered for eligibility, or have opted out.

Slight differences between values provided at this level of aggregation and data provided at other levels of aggregation may occur because of round-off error. Population values are subject to change without notice when new source data is received.

SURVEILLANCE AND HEALTH STATUS ASSESSMENT

Public Health Surveillance

Report Date: March 1, 2011

An influenza report targeted to the general public is available at: <http://www.health.alberta.ca/health-info/influenza-evidence.html>