

## Weekly Report

March 15, 2011

The purpose of this report is to inform Public Health staff, primary care providers, acute care staff and other community practitioners about recent respiratory virus activity in the province of Alberta. Unless otherwise noted, all data presented are current as of the Saturday prior to the day the report is released.

To navigate to certain sections of the report or to visit other relevant websites, use the Quick Links below

[Alberta Snapshot](#)

[Section 1: Alberta](#)

[Section 2: Zone 1 - South](#)

[Section 3: Zone 2 - Calgary](#)

[Section 4: Zone 3 - Central](#)

[Section 5: Zone 4 - Edmonton](#)

[Section 6: Zone 5 - North](#)

[Annex: Data Notes](#)

[Current Global Information](#)

[FluWatch \(PHAC\)](#)

[FluView \(US CDC\)](#)

[HPA \(UK\)](#)

[WHO](#)

[Travel Advisories](#)

### What's New?

- The influenza season appears to be peaking or declining in most areas of the northern hemisphere, with the exception of continuing activity in parts of North America and Eastern Europe. Influenza type B is now the most common influenza virus seen in many European countries. The majority of the viruses characterized in both North America and Europe are closely related to the strains included in the current seasonal vaccine, however a small number of influenza type B of the Yamagata lineage continue to be reported, making up approximately 5-7% of the B viruses detected. Severe outcomes due to influenza have been declining in Europe, although remain high in Greece.
- In North Africa and the Middle East, influenza activity remains low with limited co-circulation of influenza A (H1N1) 2009 and influenza B. Activity is also declining in many parts of Asia. Australia continues to have transmission of influenza A (H3N2) at low levels.
- In the United States, influenza transmission decreased during Week 9 (Feb 27-Mar 5, 2011). Of the viruses antigenically characterized this season, 17.0% have been identified as influenza A (H1N1) 2009, 46.0% as influenza A (H3N2), 35.0% as influenza B (Victoria lineage) and 2.0% as influenza B (Yamagata lineage).
- In Canada, increases in influenza activity have been observed recently in Quebec and British Columbia, while other areas of the country have reported unchanging or declining trends. Influenza A (H3N2) remains the most commonly detected influenza virus in the country. During week 9, the proportion of specimens positive for influenza A (H1N1) 2009 decreased while the proportion of influenza B detections increased from 12% to 18%. During the same time period, the total number of respiratory outbreaks decreased.
- RSV activity continues to decrease across Alberta. Laboratory data show that the overall number of influenza cases confirmed in Week 10 (Mar 6-12, 2011) decreased sharply from Week 9 (Feb 27-Mar 5, 2011). This, in addition to the gradual but continued declining trends in both calls to Health Link Alberta for cough and breathing difficulties and visits to Edmonton and Calgary emergency departments for cough could potentially indicate that the peak of the influenza seasons has occurred. Despite these trends, the proportion of influenza B cases of all influenza cases identified continues to increase. Overall this season, the total number of influenza cases confirmed in the province is 853, of which 48.0% have been identified as influenza A (H3), 20.0% as influenza A (H1N1) 2009, 30.0% as influenza type B, and 2.0% influenza A with unresolved sub-typing.
- Since last week's update, there have been three new respiratory outbreaks confirmed in Alberta, all in Calgary Zone. Two occurred in schools and one occurred in a long term care facility. Of the two that occurred in schools, one was attributed to influenza B and the other is currently pending laboratory confirmation. RSV was the agent confirmed in the long term care facility outbreak.

If you have questions about the Alberta Respiratory Virus Surveillance Update, or any of the indicators, please contact: [AHSPublicHealthSurveillance@albertahealthservices.ca](mailto:AHSPublicHealthSurveillance@albertahealthservices.ca) Or phone: 780-342-0210

## Alberta Snapshot

[Back to first page](#)

Indicators			Cumulative Counts					Alberta
			Week 35 (starting Aug 29/10) to Week 10 (starting Mar 6/11)					
			South	Calgary	Central	Edmonton	North	
Laboratory Confirmed Cases	Number of cases with a positive respiratory specimen <sup>1</sup>	Adenovirus	4	37	8	70	16	135
		Coronavirus	8	61	30	96	36	231
		Human metapneumovirus (hMPV)	9	5	0	14	6	34
		Influenza A	33	170	70	212	112	597
		Influenza B	30	102	17	77	30	256
		Parainfluenza	29	82	49	169	94	423
		Respiratory syncytial virus (RSV)	110	424	180	692	270	1,676
		Rhino enterovirus	100	420	159	593	280	1,552
		Mixed	33	130	48	134	85	430
		Total	356	1,431	561	2,057	929	5,334
Outbreaks	# laboratory confirmed respiratory outbreaks <sup>2</sup>	0	20	7	31	2	60	
Influenza Immunizations	Total number of clients who have received 1 dose administered by AHS Public Health <sup>3</sup> (cumulative since Oct 3, 2010)	43,165	191,623	61,674	161,678	62,762	520,902	
	The reported number of people who have received 1 dose administered by external providers (Oct 3-Dec 31, 2010) <sup>4</sup>	17,639	120,408	17,789	62,481	5,075	223,392	

-- Information not available

\*Note: 22 specimens were positive for influenza A or B and one or more other virus type(s). These cases have been included in the influenza counts, as well as the other respective specimen type(s). They have not been included in the 'Mixed' category. One specimen was positive for both influenza A & B.

<sup>1</sup> Sources: DIAL – Provincial Laboratory and the Outbreak Response Toolkit (includes cases with positive respiratory specimens received on or before Mar 12, 2011).

<sup>2</sup> Source: Alberta Health and Wellness Outbreak Reporting Form (Fillable PDF) from All Zones

<sup>3</sup> Source: AHS Zones (number does not include doses provided by external providers); includes first doses only for those that require two doses

<sup>4</sup> In some cases, it was not possible to separate dose 1's from dose 2's.

For more information on data definitions and sources see [Annex: Data Notes section at the end of this report](#)

## SURVEILLANCE AND HEALTH STATUS ASSESSMENT

### Public Health Surveillance

Report Date: March 15, 2011

An influenza report targeted to the general public is available at: <http://www.health.alberta.ca/health-info/influenza-evidence.html>

## SECTION 1: ALBERTA

[Back to first page](#)

### Summary

RSV activity continues to decline. A number of trends indicate the possibility that the influenza season has peaked.

### Laboratory Data (see [Figure 1A](#), [Figure 1B](#) & [Figure 1C](#), [Table 1A](#) & [Table 1B](#))

In Alberta, RSV activity continues to decline. The overall number of influenza cases confirmed in Week 10 (Mar 6-12, 2011) decreased quite sharply from Week 9 (Feb 27-Mar 5, 2011), which could potentially indicate the peak of the influenza season has occurred. Despite this trend, the proportion of influenza B cases of all influenza cases identified continues on an increasing trend. As of the end of last week (Mar 12, 2011), the total number of confirmed cases of influenza in the province this season is 853 (48.0% influenza A (H3), 20.0% influenza A (H1N1) 2009, 30.0% influenza type B, and 2.0% influenza A with unresolved sub-typing). At this point in the season, the age specific rate for confirmed influenza cases (all types) in infants 0 to <2 years of age is higher than the rate in other age groups, at 12.3 per 10,000 compared to 5.3 per 10,000 or lower for all other age groups.

### Outbreaks (see [Figure 1D](#))

Three respiratory outbreaks have been confirmed in Alberta since the last report; all in Calgary Zone. Two of them occurred in schools in Week 9 (Feb 27–Mar 5, 2011) including one that was attributed to influenza B and one that is currently pending laboratory confirmation. The third outbreak was attributed to RSV and occurred in a long term care facility during Week 7 (Feb 13-19, 2011).

In addition to the outbreaks that were confirmed, one new respiratory outbreak was reported in a Central Zone long term care facility. The onset of symptoms occurred in Week 8 (Feb 20-26, 2011) and is currently pending laboratory confirmation. The preliminary attack rate for this outbreak was 23%.

### Health Link Alberta Calls (see [Figure 1E](#))

The number of calls to Health Link Alberta for cough or breathing difficulties by Albertans decreased by 5% in Week 10 (Mar 6-12, 2011) from the previous week.

### Emergency Department/Urgent Care Center Visits and Hospital Admissions

The combined number of visits and hospital admissions at emergency departments/urgent care centers (ED's) for influenza-like illness (ILI) in the City of Calgary and Edmonton Zone decreased by 2% and 4%, respectively, in Week 10 (Mar 6-12, 2011) from the previous week. During that same time period, the percentage of ILI visits of all screened visits dropped from 7% to 6%.

The number of ED visits and hospital admissions for symptoms with cough at the same facilities increased by 1% and 6% respectively in Week 10 from Week 9.

### Sentinel Physician Office Visits

The combined percentage of ILI- and LRTI-related visits of all visits to sentinel physician offices in Alberta remained the same in Week 9 (Feb 27-Mar 5, 2011) compared to the previous week.

## SURVEILLANCE AND HEALTH STATUS ASSESSMENT

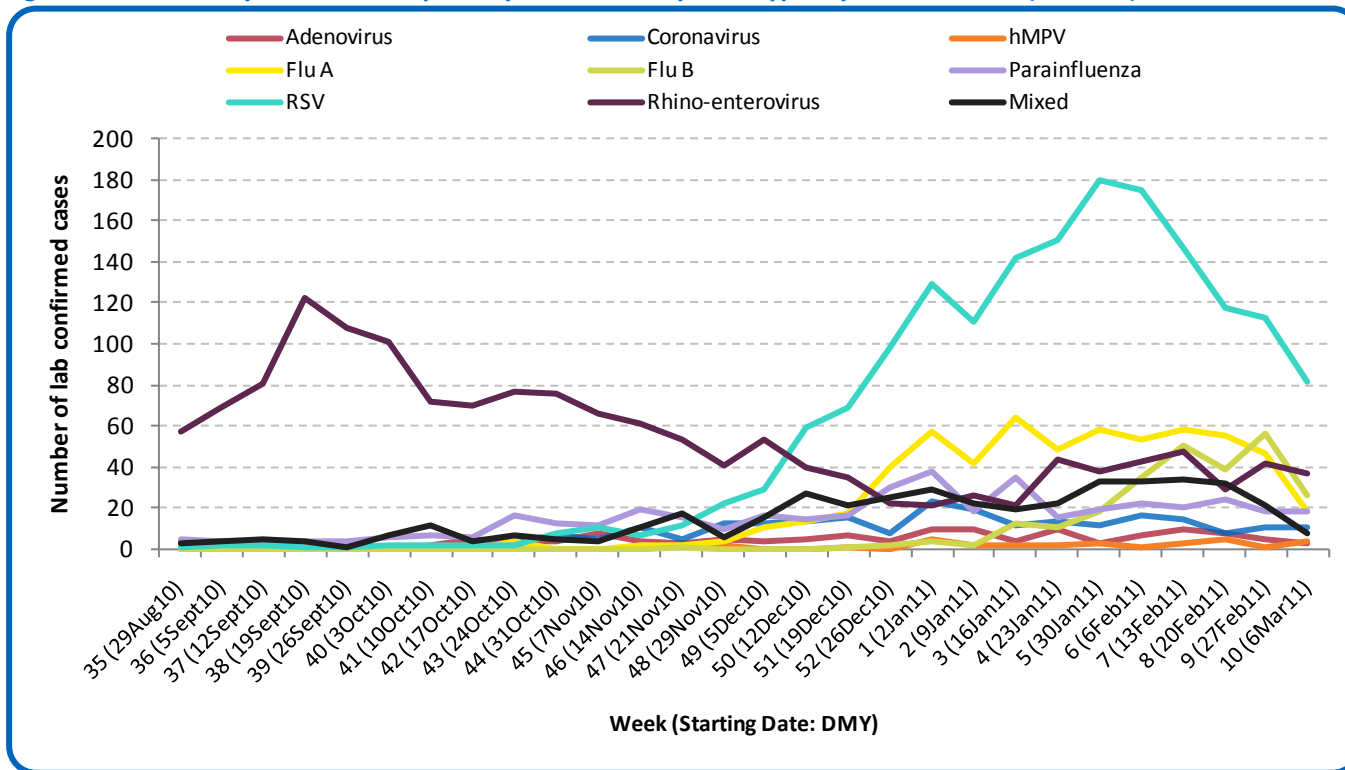
### Public Health Surveillance

Report Date: March 15, 2011

An influenza report targeted to the general public is available at: <http://www.health.alberta.ca/health-info/influenza-evidence.html>

[Back to start of section](#)

Figure 1A: Laboratory confirmed respiratory virus cases, by virus type, by week, Alberta (2010-11)



Sources: DIAL – Provincial Laboratory and the Outbreak Response Toolkit (includes cases with positive respiratory specimens received on or before Mar 12, 2011). For more information on data definitions and sources see [Annex: Data Notes section at the end of this report](#)

**SURVEILLANCE AND HEALTH STATUS ASSESSMENT**

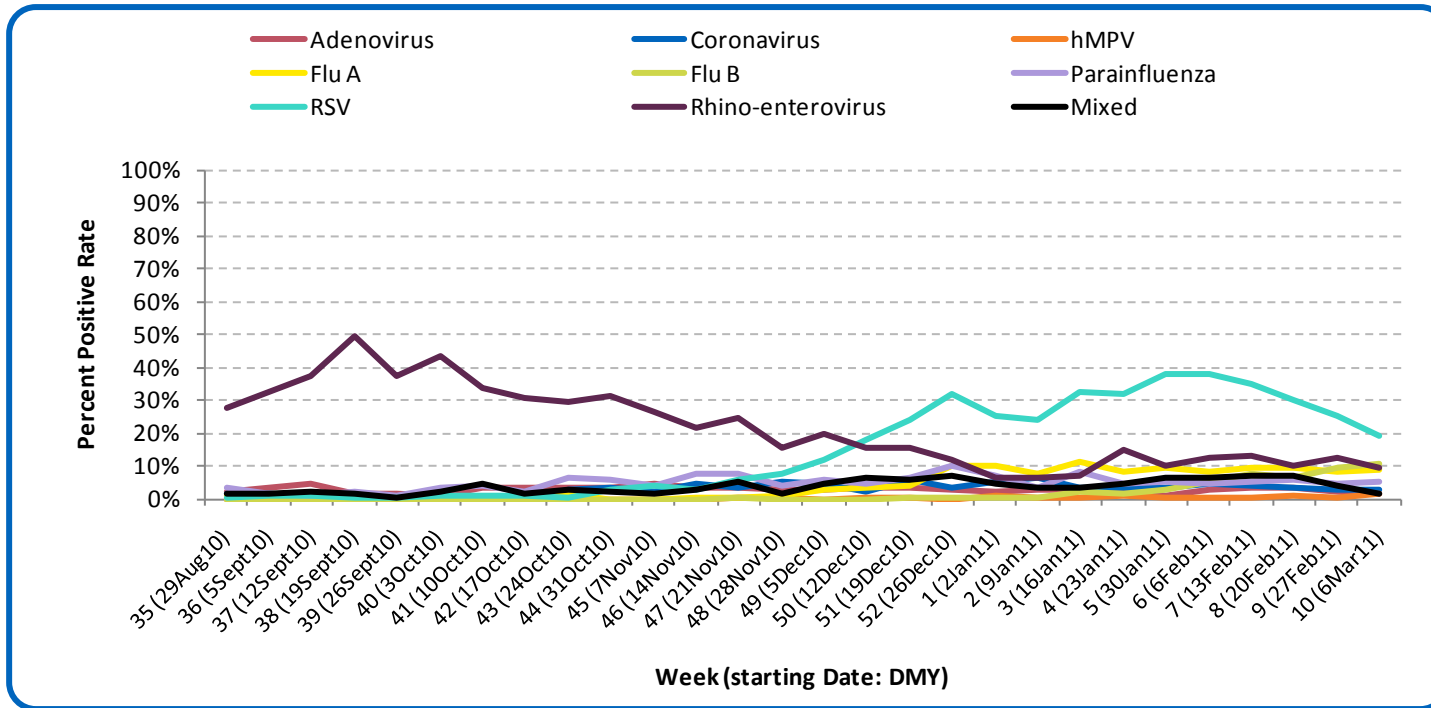
**Public Health Surveillance**

Report Date: March 15, 2011

An influenza report targeted to the general public is available at: <http://www.health.alberta.ca/health-info/influenza-evidence.html>

[Back to start of section](#)

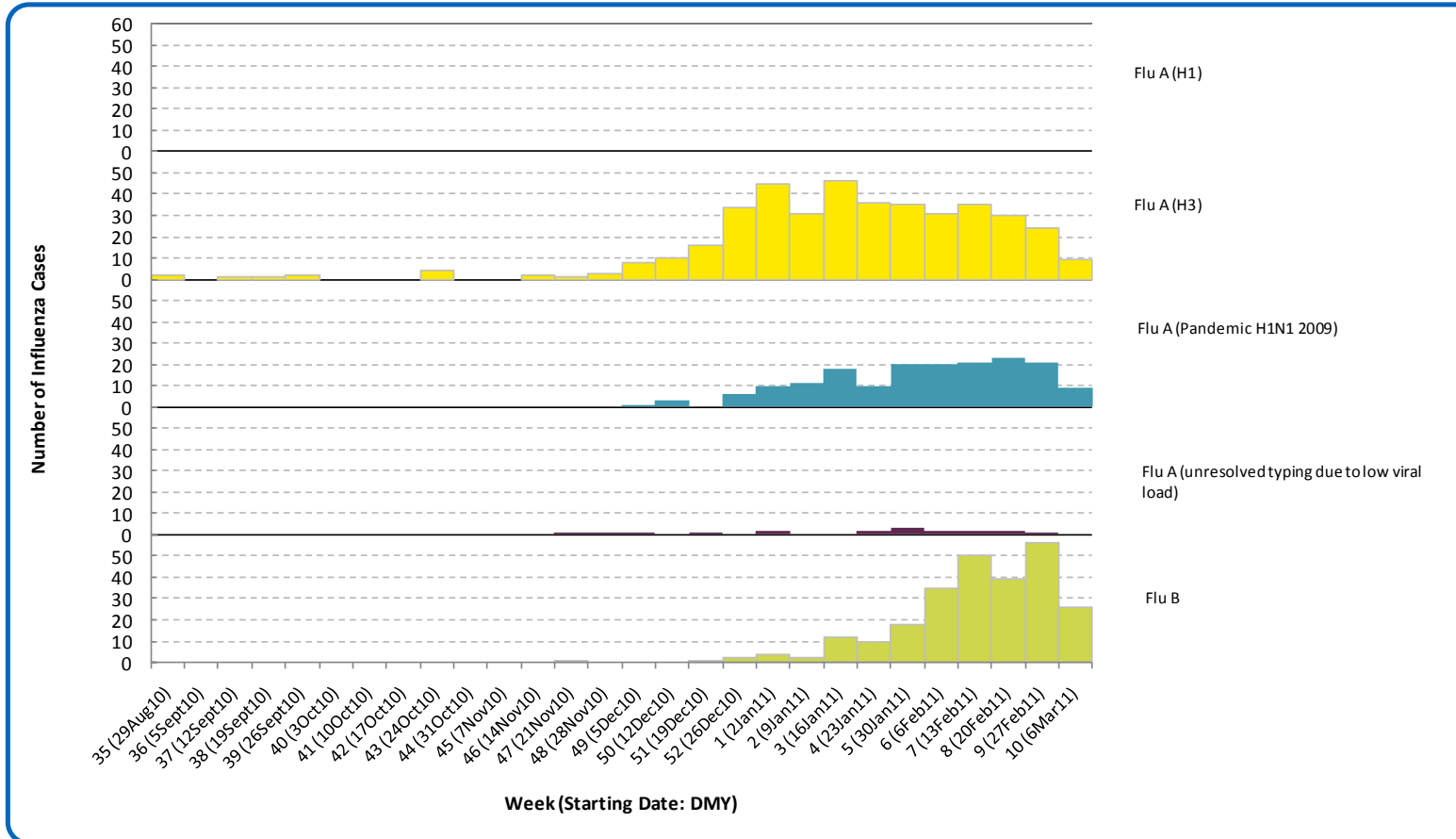
Figure 1B: Respiratory specimen percent positive rates, by virus type, by week, Alberta (2010-11)



Sources: DIAL – Provincial Laboratory (includes cases with positive respiratory specimens received on or before Mar 12, 2011). For more information on data definitions and sources see [Annex: Data Notes section at the end of this report](#)

[Back to start of section](#)

Figure 1C: Laboratory confirmed influenza cases, by subtype, by week specimen received, Alberta (2010-2011)



\*Note: 22 specimens were positive for influenza A or B and one or more other virus type(s). One specimen was positive for both influenza A & B.  
 Source: Outbreak Response Toolkit (includes cases with positive respiratory specimens received on or before Mar 12, 2011).  
 For more information on data definitions and sources see [Annex: Data Notes section at the end of this report](#)

SURVEILLANCE AND HEALTH STATUS ASSESSMENT

Public Health Surveillance  
 Report Date: March 15, 2011

An influenza report targeted to the general public is available at: <http://www.health.alberta.ca/health-info/influenza-evidence.html>

[Back to start of section](#)

**Table 1A: New influenza cases (and age specific rates), by subtype, by age group, Alberta (Week 10: Mar 6-12, 2011)**

	Flu A (Seasonal-H1)		Flu A (Seasonal-H3)		Flu A (Pandemic H1N1 2009)		Flu A (unresolved typing due to low viral load)		Flu B		Total	
	#	Rate (per 10,000)	#	Rate (per 10,000)	#	Rate (per 10,000)	#	Rate (per 10,000)	#	Rate (per 10,000)	#	Rate (per 10,000)
0 to <2 years	0	0.0	1	0.1	0	0.0	0	0.0	2	0.2	3	0.3
2 to <5 years	0	0.0	0	0.0	1	0.1	0	0.0	2	0.1	3	0.2
5 to <9 years	0	0.0	0	0.0	0	0.0	0	0.0	8	0.5	8	0.5
9 to <18 years	0	0.0	2	<0.1	0	0.0	0	0.0	3	0.1	5	0.1
18 to <65 years	0	0.0	6	<0.1	8	<0.1	0	0.0	10	<0.1	24	0.1
65 to <75 years	0	0.0	0	0.0	0	0.0	0	0.0	1	<0.1	1	0.0
75+ years	0	0.0	0	0.0	0	0.0	0	0.0	0	0.0	0	0.0
<b>Total</b>	<b>0</b>	<b>0.0</b>	<b>9</b>	<b>&lt;0.1</b>	<b>9</b>	<b>&lt;0.1</b>	<b>0</b>	<b>0.0</b>	<b>26</b>	<b>0.1</b>	<b>44</b>	<b>0.1</b>

**Table 1B: Cumulative influenza cases (and age specific rates), by subtype, by age group, Alberta (Aug 29, 2010 – Mar 12, 2011)**

	Flu A (Seasonal-H1)		Flu A (Seasonal-H3)		Flu A (Pandemic H1N1 2009)		Flu A (unresolved typing due to low viral load)		Flu B		Total	
	#	Rate (per 10,000)	#	Rate (per 10,000)	#	Rate (per 10,000)	#	Rate (per 10,000)	#	Rate (per 10,000)	#	Rate (per 10,000)
0 to <2 years	0	0.0	63	6.2	23	2.3	2	0.2	37	3.6	125	12.3
2 to <5 years	0	0.0	33	2.4	14	1.0	2	0.1	26	1.9	75	5.3
5 to <9 years	0	0.0	26	1.5	9	0.5	2	0.1	39	2.2	76	4.4
9 to <18 years	0	0.0	25	0.6	14	0.3	2	0.0	68	1.6	109	2.6
18 to <65 years	0	0.0	169	0.7	110	0.5	8	0.0	76	0.3	363	1.5
65 to <75 years	0	0.0	18	0.9	3	0.1	0	0.0	5	0.2	26	1.2
75+ years	0	0.0	72	4.0	0	0.0	2	0.1	5	0.3	79	4.4
<b>Total</b>	<b>0</b>	<b>0.0</b>	<b>406</b>	<b>1.1</b>	<b>173</b>	<b>0.5</b>	<b>18</b>	<b>0.0</b>	<b>256</b>	<b>0.7</b>	<b>853</b>	<b>2.4</b>

Source for Table 1A & 1B: Outbreak Response Toolkit (includes cases with positive respiratory specimens received on or before *Mar 12, 2011*).

Population data values used to calculate rates are for June 30, 2009 and are estimated using actual population values from the Alberta Health Care Insurance Plan (AHCIP) Registration File as of March 31, 2009.

For more information on data definitions and sources see [Annex: Data Notes section at the end of this report](#)

## SURVEILLANCE AND HEALTH STATUS ASSESSMENT

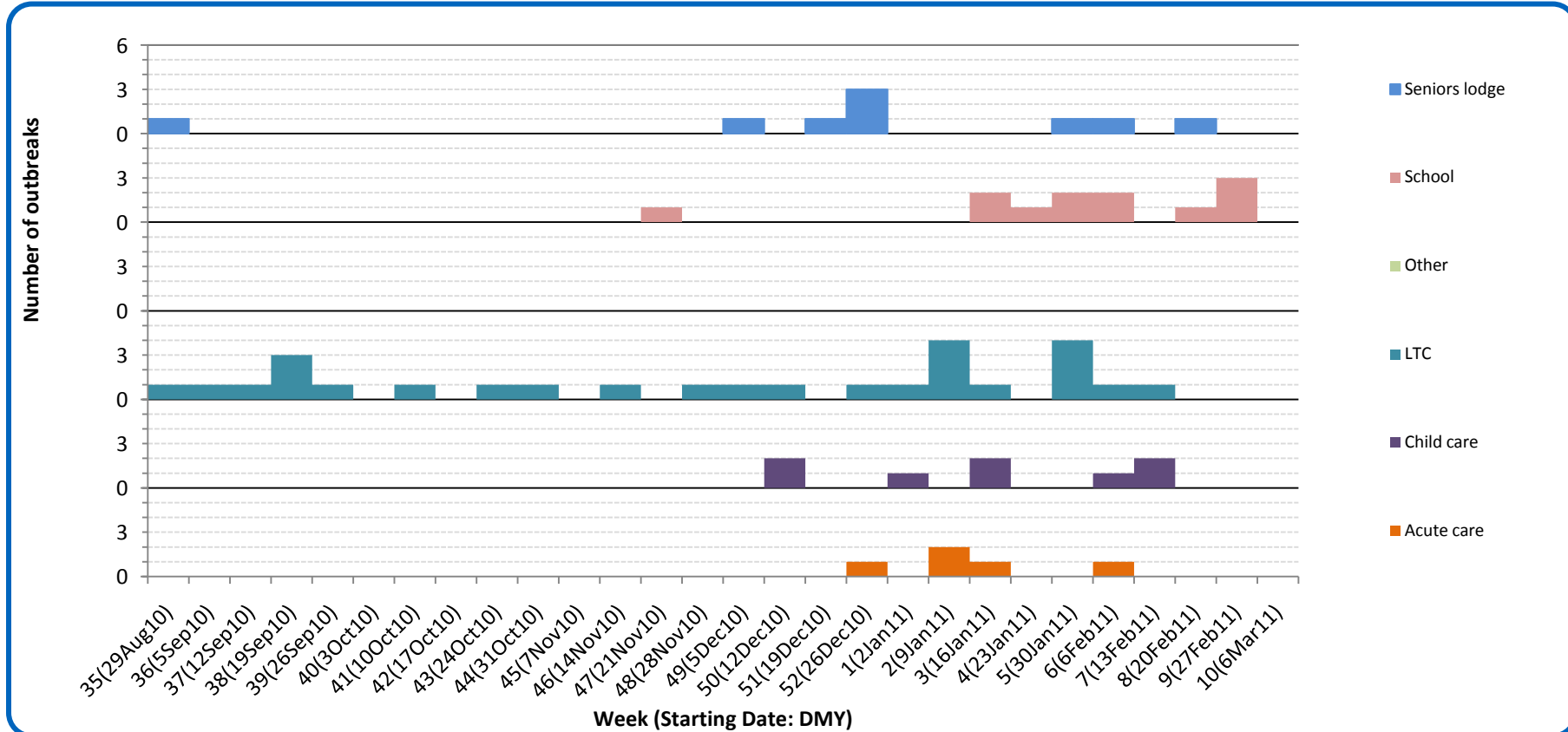
### Public Health Surveillance

Report Date: March 15, 2011

An influenza report targeted to the general public is available at: <http://www.health.alberta.ca/health-info/influenza-evidence.html>

[Back to start of section](#)

Figure 1D: Respiratory outbreaks, by facility type, by onset week, Alberta (2010-2011; school outbreaks may not have a laboratory confirmation)



Source: Alberta Outbreak Reporting Form as of 23:59 on Mar 12, 2011. LTC stands for long term care facility. For more information on data definitions and sources see [Annex: Data Notes section at the end of this report](#)

SURVEILLANCE AND HEALTH STATUS ASSESSMENT

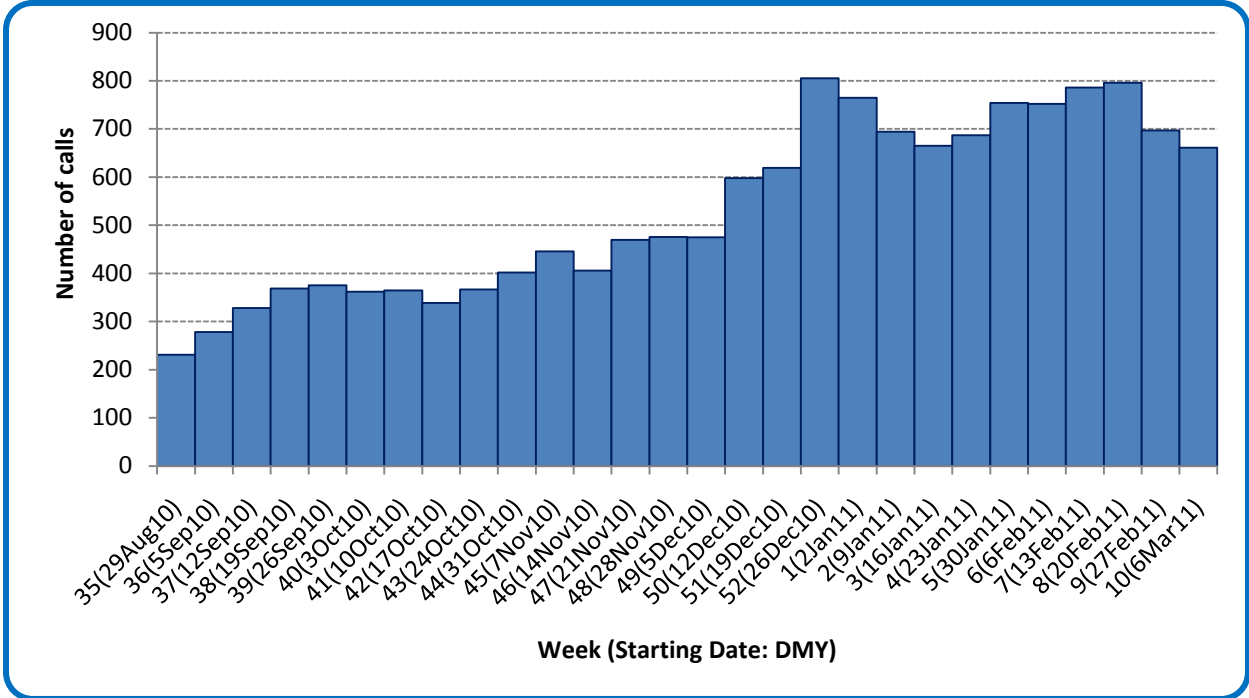
Public Health Surveillance

Report Date: March 15, 2011

An influenza report targeted to the general public is available at: <http://www.health.alberta.ca/health-info/influenza-evidence.html>

[Back to start of section](#)

Figure 1E: Number of calls to Health Link Alberta for cough or breathing difficulties, by week, Alberta (2010-11)



Source: Sharp Focus - Health Link Alberta - via Alberta Real Time Syndromic Surveillance Net (ARTSSN) as of 23:59 on Mar 12, 2011. For more information on data definitions and sources see [Annex: Data Notes section at the end of this report](#)

**SURVEILLANCE AND HEALTH STATUS ASSESSMENT**

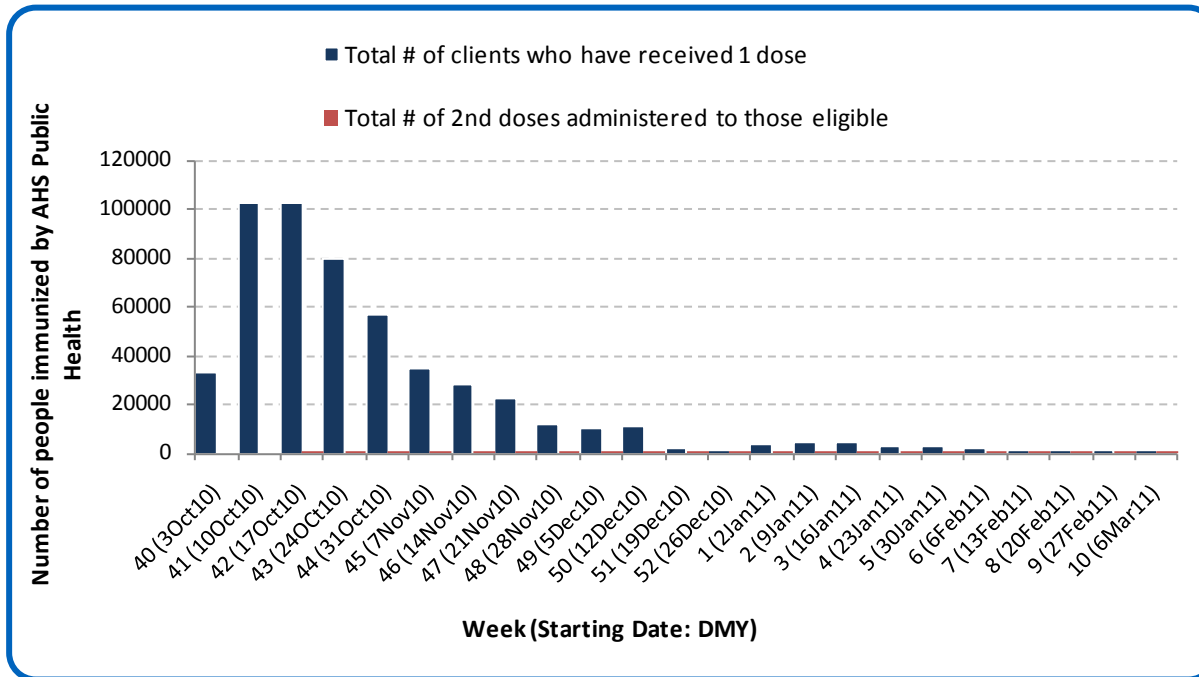
**Public Health Surveillance**

Report Date: March 15, 2011

An influenza report targeted to the general public is available at: <http://www.health.alberta.ca/health-info/influenza-evidence.html>

[Back to start of section](#)

Figure 1F: Number immunized by AHS (Public Health), by week, Alberta (2010-11)



Source: AHS Zones (doses do not include those delivered by external providers)  
 Note: Immunization coverage rates will be reported at the end of the influenza season  
 For more information on data definitions and sources see [Annex: Data Notes section at the end of this report](#)

**SURVEILLANCE AND HEALTH STATUS ASSESSMENT**

**Public Health Surveillance**

Report Date: March 15, 2011

An influenza report targeted to the general public is available at: <http://www.health.alberta.ca/health-info/influenza-evidence.html>

[Back to start of section](#)

**Table 1C: AHS (Public Health) delivered influenza immunizations (with cumulative totals), by priority group, Alberta (2010-11)**

Priority Group		# Immunized (Week 10 – Mar6-12, 2011)	Cumulative Number Immunized (since Oct 3, 2010)
Long term care staff		3	2,630
Health care workers		21	19,008
Pregnant women		8	4,713
Residents of long term care		0	4,839
65 years of age and over		27	146,747
All children 6 months up to and including 23 months*	Dose #1	463	26,408
	Dose #2	327	8,369
All children 24 months up to and including 59 months*	Dose #1	100	25,333
	Dose #2	31	1,464
High risk: 5 years up to and including 8 years*	Dose #1	17	5,802
	Dose #2	4	150
High risk: 9 years up to and including 64 years		56	55,935
Healthy: 5 years up to and including 8 years*	Dose #1	44	18,796
	Dose #2	9	615
Healthy: 9 years up to and including 64 years		275	210,691
<b>Total number of clients who have received 1 dose</b>		<b>1,014</b>	<b>520,902</b>
Total number of 2nd doses administered to those eligible*		371	10,598

Source: AHS Zones (doses do not include those delivered by external providers)

\*Children under 9 years of age who have not received at least one dose of seasonal influenza vaccine in past years require two doses, given at least four weeks apart.

Note: Immunization coverage rates will be reported at the end of the influenza season

For more information on data definitions and sources see [Annex: Data Notes section at the end of this report](#)

## SURVEILLANCE AND HEALTH STATUS ASSESSMENT

### Public Health Surveillance

Report Date: March 15, 2011

An influenza report targeted to the general public is available at: <http://www.health.alberta.ca/health-info/influenza-evidence.html>

[Back to start of section](#)

**Table 1D: Influenza immunizations delivered by external partners, by priority group, Alberta (Oct 3-Dec 31, 2010)**

Priority Group	# Immunized Oct 3-Dec 31, 2010	
Long term care staff	5,668	
Health care workers	31,866	
Pregnant women	1,640	
Residents of long term care	6,951	
65 years of age and over	52,176	
All children 6 months up to and including 23 months*	Dose #1	965
	Dose #2**	48
All children 24 months up to and including 59 months*	Dose #1	1,043
	Dose #2**	27
High risk: 5 years up to and including 8 years*	Dose #1	1,685
	Dose #2**	2
High risk: 9 years up to and including 64 years	29,034	
Healthy: 5 years up to and including 8 years*	Dose #1	2,226
	Dose #2**	5
Healthy: 9 years up to and including 64 years	90,138	
<b>Total number of clients who have received 1 dose</b>	<b>223,392</b>	
Total number of 2nd doses administered to those eligible*	82	

Source: AHS Zones (zones are required to report doses of seasonal influenza vaccine administered by community and other providers (e.g. physicians, pharmacists, LTC, WHS/OHS programs) twice during the influenza season. These numbers are from the first report (for doses delivered from Oct 3 to Dec 31, 2010). The remaining doses will be reported at a later date.

\*Children under 9 years of age who have not received at least one dose of seasonal influenza vaccine in past years require two doses, given at least four weeks apart.

\*\* In some cases, it was not possible to separate dose 1's from dose 2's. Therefore, the dose 1 category may contain some 2<sup>nd</sup> doses.

Note: Immunization coverage rates will be reported at the end of the influenza season

For more information on data definitions and sources see [Annex: Data Notes section at the end of this report](#)

## SURVEILLANCE AND HEALTH STATUS ASSESSMENT

### Public Health Surveillance

Report Date: March 15, 2011

An influenza report targeted to the general public is available at: <http://www.health.alberta.ca/health-info/influenza-evidence.html>

## SECTION 2: ZONE 1 - SOUTH

[Back to first page](#)

### Summary

With the exception of a continuing decline in laboratory confirmed RSV, respiratory virus activity appears to be relatively unchanged in South Zone.

### Laboratory Data (see [Figure 2A](#), [Figure 2B](#), [Figure 2C](#), [Table 2A](#) & [Table 2B](#))

RSV is currently the predominant virus being confirmed in South Zone. One case of influenza type B was confirmed in South Zone in Week 10 (Mar 6-12, 2011), bringing the total number of influenza cases confirmed in this part of the province this season to 63. At this point in the season, the age specific rate for confirmed influenza in South zone is highest for infants under the age of 2 years and children between the ages of 2 to less than 5 years, at 7.3 per 10,000 and 7.8 per 10,000, respectively.

### Outbreaks

There have been no respiratory outbreaks reported in South Zone this season.

### Health Link Alberta Calls (see [Figure 2D](#))

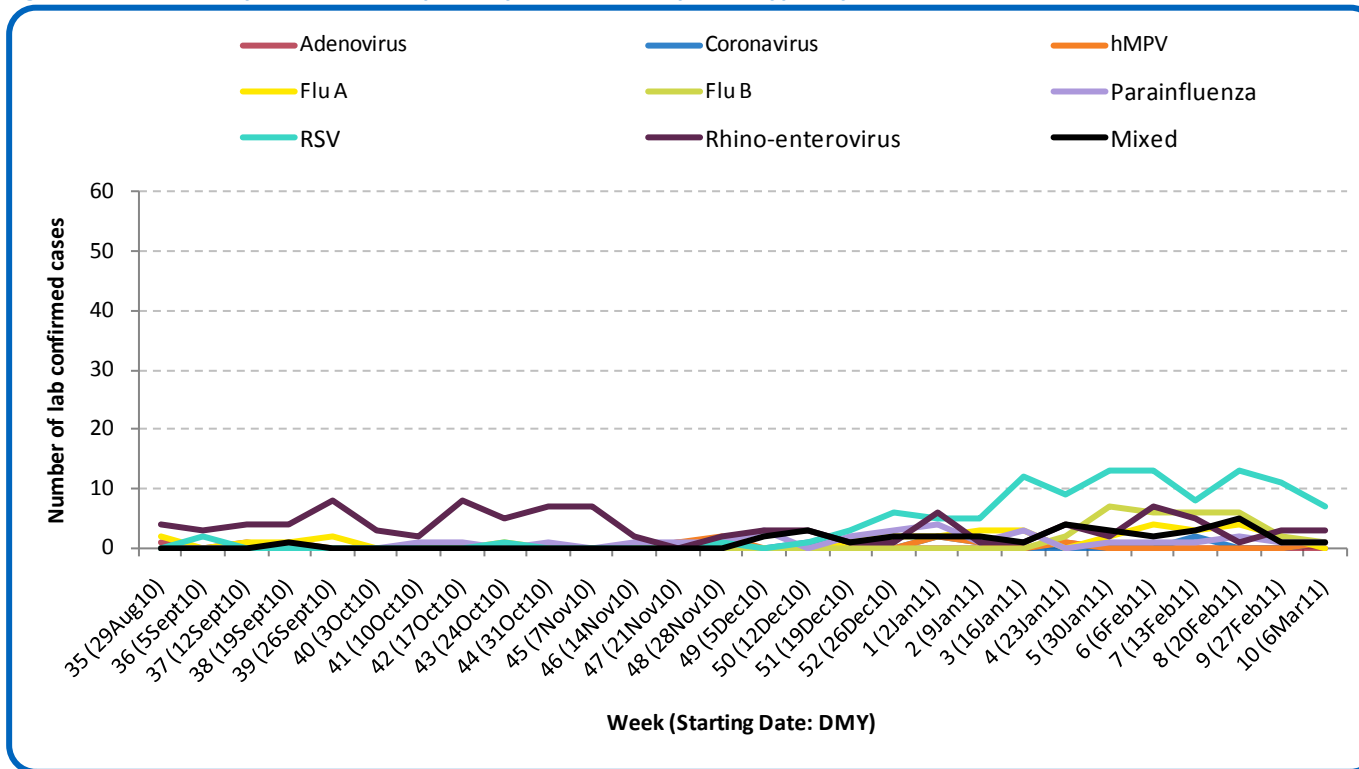
The number of calls to Health Link Alberta for cough or breathing difficulties by residents of South Zone remained relatively unchanged in Week 10 (Mar 6-12, 2011) compared to the previous week.

### Emergency Department/Urgent Care Center Visits and Hospital Admissions

This information is not available for South Zone.

[Back to start of section](#)

Figure 2A: Laboratory confirmed respiratory virus cases, by virus type, by week, South Zone (2010-2011)



Sources: DIAL – Provincial Laboratory and the Outbreak Response Toolkit (includes cases with positive respiratory specimens received on or before Mar 12, 2011). For more information on data definitions and sources see [Annex: Data Notes section at the end of this report](#)

**SURVEILLANCE AND HEALTH STATUS ASSESSMENT**

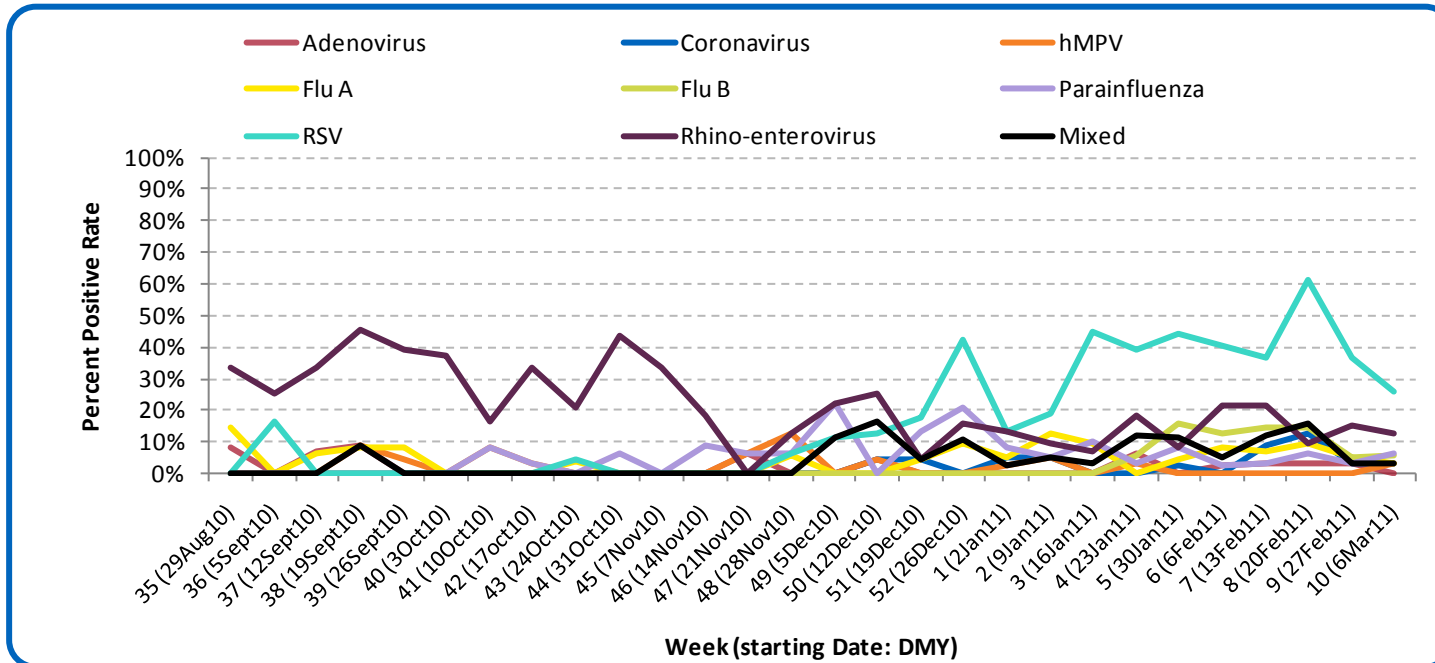
**Public Health Surveillance**

Report Date: March 15, 2011

An influenza report targeted to the general public is available at: <http://www.health.alberta.ca/health-info/influenza-evidence.html>

[Back to start of section](#)

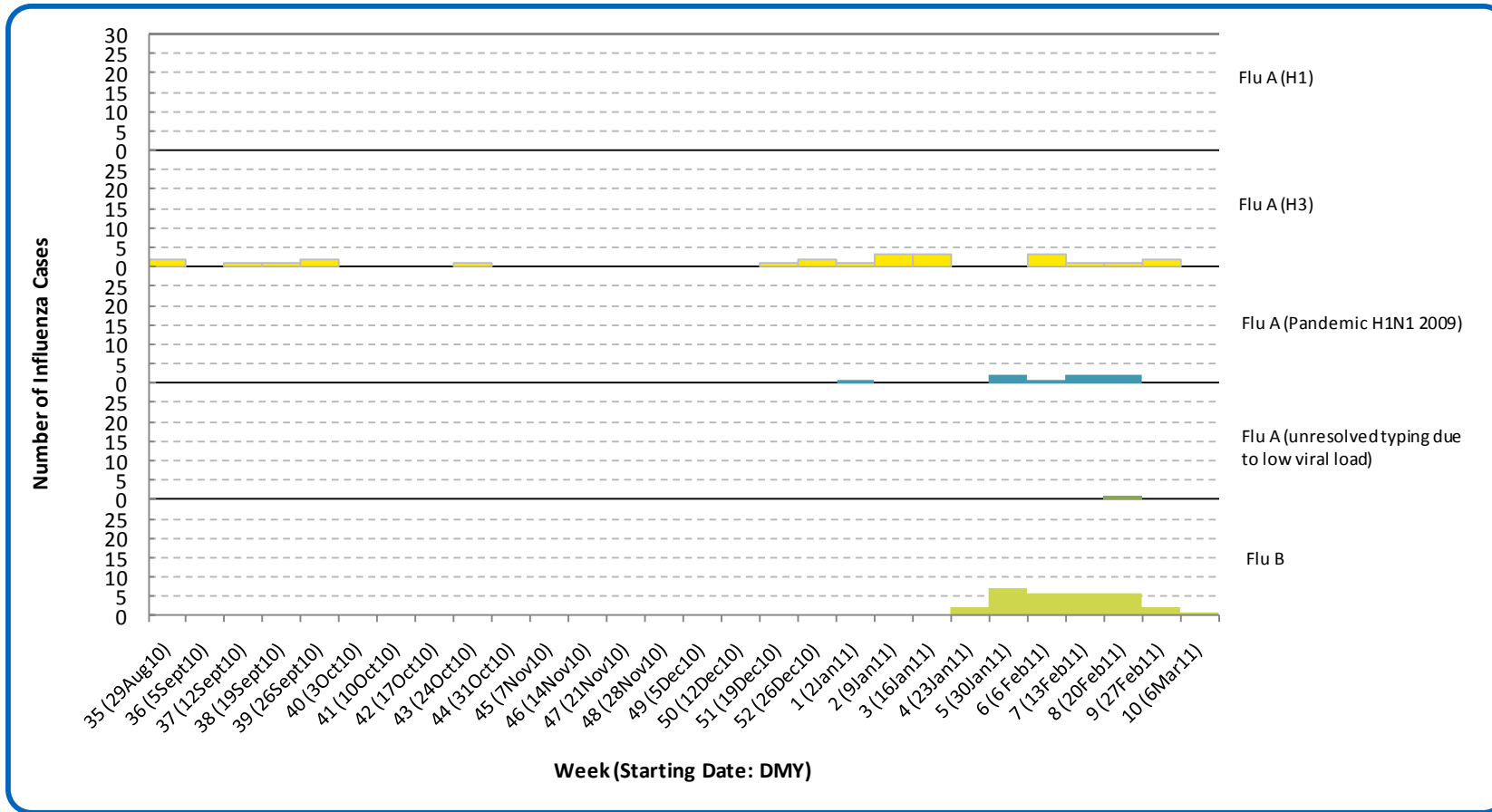
Figure 2B: Respiratory specimen percent positive rates, by virus type, by week, South Zone (2010-2011)



Source: DIAL – Provincial Laboratory (includes cases with positive respiratory specimens received on or before Mar 12, 2011)  
For more information on data definitions and sources see [Annex: Data Notes section at the end of this report](#)

[Back to start of section](#)

Figure 2C: Laboratory confirmed influenza cases, by subtype, by week specimen received, South Zone (2010-2011)



Source: Outbreak Response Toolkit (includes cases with positive respiratory specimens received on or before Mar 12, 2011).

\*Note: 2 specimens were positive for influenza B and one other virus type.

For more information on data definitions and sources see [Annex: Data Notes section at the end of this report](#)

SURVEILLANCE AND HEALTH STATUS ASSESSMENT

Public Health Surveillance

Report Date: March 15, 2011

An influenza report targeted to the general public is available at: <http://www.health.alberta.ca/health-info/influenza-evidence.html>

[Back to start of section](#)

**Table 2A: New influenza cases (and age specific rates), by subtype, by age group, South Zone (Week 10: Mar 6-12, 2011)**

	Flu A (Seasonal-H1)		Flu A (Seasonal-H3)		Flu A (Pandemic H1N1 2009)		Flu A (unresolved typing due to low viral load)		Flu B		Total	
	#	Rate (per 10,000)	#	Rate (per 10,000)	#	Rate (per 10,000)	#	Rate (per 10,000)	#	Rate (per 10,000)	#	Rate (per 10,000)
0 to <2 years	0	0.0	0	0.0	0	0.0	0	0.0	0	0.0	0	0.0
2 to <5 years	0	0.0	0	0.0	0	0.0	0	0.0	0	0.0	0	0.0
5 to <9 years	0	0.0	0	0.0	0	0.0	0	0.0	0	0.0	0	0.0
9 to <18 years	0	0.0	0	0.0	0	0.0	0	0.0	0	0.0	0	0.0
18 to <65 years	0	0.0	0	0.0	0	0.0	0	0.0	1	0.1	1	0.1
65 to <75 years	0	0.0	0	0.0	0	0.0	0	0.0	0	0.0	0	0.0
75+ years	0	0.0	0	0.0	0	0.0	0	0.0	0	0.0	0	0.0
<b>Total</b>	<b>0</b>	<b>0.0</b>	<b>0</b>	<b>0.0</b>	<b>0</b>	<b>0.0</b>	<b>0</b>	<b>0.0</b>	<b>1</b>	<b>&lt;0.1</b>	<b>1</b>	<b>&lt;0.1</b>

**Table 2B: Cumulative influenza cases (and age specific rates), by subtype, by age group, South Zone (Aug 29, 2010–Mar 12, 2011)**

	Flu A (Seasonal-H1)		Flu A (Seasonal-H3)		Flu A (Pandemic H1N1 2009)		Flu A (unresolved typing due to low viral load)		Flu B		Total	
	#	Rate (per 10,000)	#	Rate (per 10,000)	#	Rate (per 10,000)	#	Rate (per 10,000)	#	Rate (per 10,000)	#	Rate (per 10,000)
0 to <2 years	0	0.0	3	3.6	0	0.0	0	0.0	3	3.6	6	7.3
2 to <5 years	0	0.0	5	4.3	2	1.7	0	0.0	2	1.7	9	7.8
5 to <9 years	0	0.0	1	0.7	0	0.0	0	0.0	3	2.1	4	2.8
9 to <18 years	0	0.0	0	0.0	0	0.0	0	0.0	9	2.6	9	2.6
18 to <65 years	0	0.0	14	0.8	4	0.2	1	0.1	11	0.6	30	1.7
65 to <75 years	0	0.0	0	0.0	2	1.1	0	0.0	1	0.5	3	1.6
75+ years	0	0.0	1	0.5	0	0.0	0	0.0	1	0.5	2	1.1
<b>Total</b>	<b>0</b>	<b>0.0</b>	<b>24</b>	<b>0.9</b>	<b>8</b>	<b>0.3</b>	<b>1</b>	<b>&lt;0.1</b>	<b>30</b>	<b>1.1</b>	<b>63</b>	<b>2.3</b>

Source for Tables 2A & 2B: Outbreak Response Toolkit (includes cases with positive respiratory specimens received on or before Mar 12, 2011).

Population data values used to calculate rates are for June 30, 2009 and are estimated using actual population values from the Alberta Health Care Insurance Plan (AHCIP) Registration File as of March 31, 2009.

For more information on data definitions and sources see [Annex: Data Notes section at the end of this report](#)

## SURVEILLANCE AND HEALTH STATUS ASSESSMENT

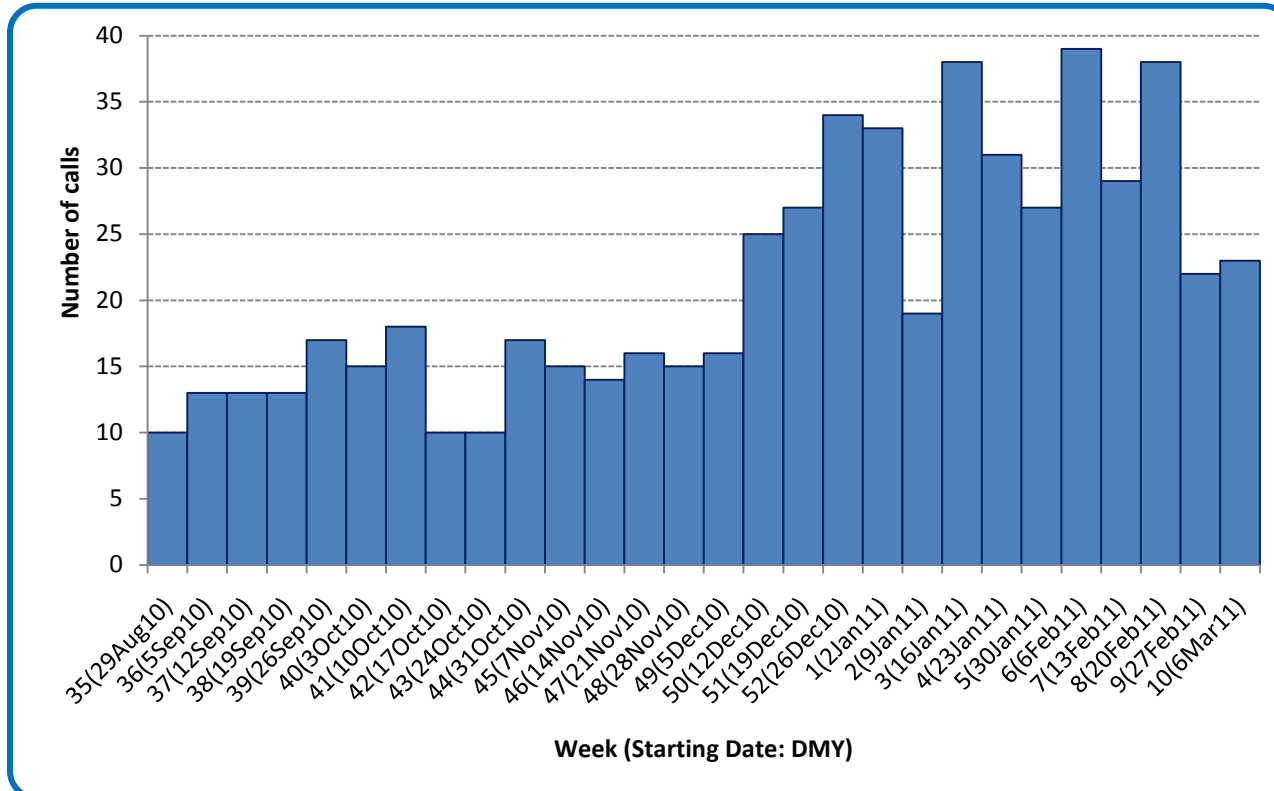
### Public Health Surveillance

Report Date: March 15, 2011

An influenza report targeted to the general public is available at: <http://www.health.alberta.ca/health-info/influenza-evidence.html>

[Back to start of section](#)

Figure 2D: Number of calls to Health Link Alberta for cough or breathing difficulties, by week, South Zone (2010-11)



Source: Sharp Focus - Health Link Alberta - via Alberta Real Time Syndromic Surveillance Net (ARTSSN) as of 23:59 on Mar 12, 2011. For more information on data definitions and sources see [Annex: Data Notes section at the end of this report](#)

SURVEILLANCE AND HEALTH STATUS ASSESSMENT

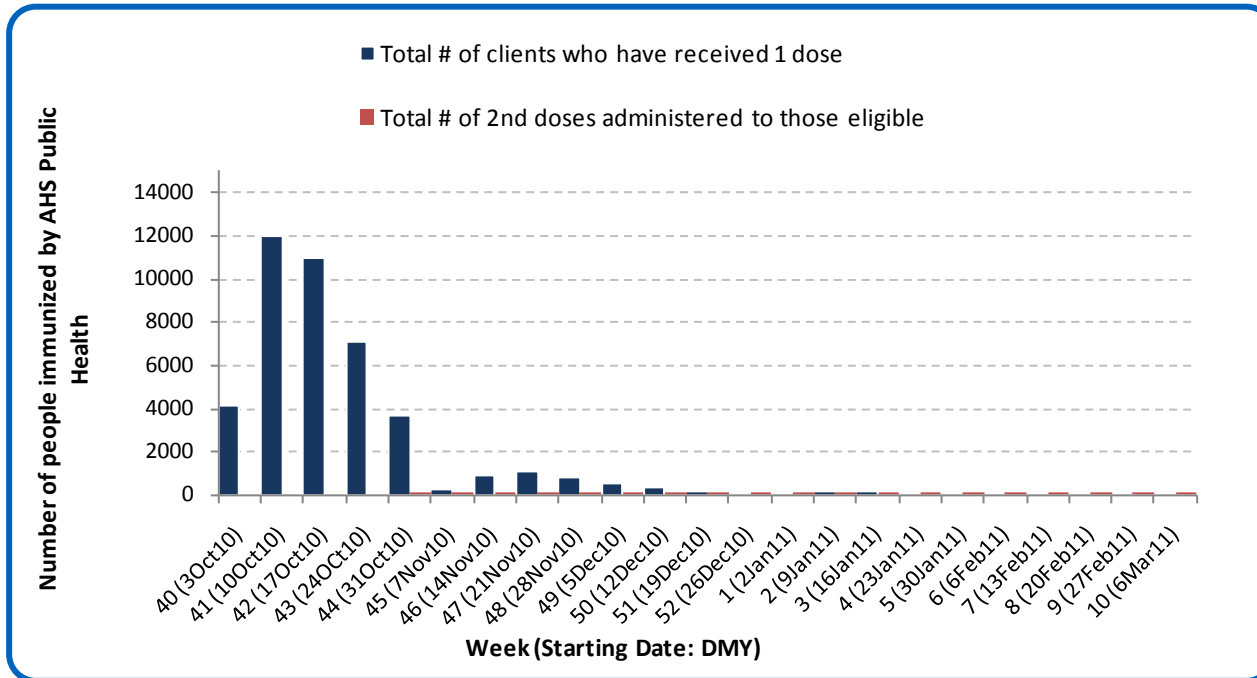
Public Health Surveillance

Report Date: March 15, 2011

An influenza report targeted to the general public is available at: <http://www.health.alberta.ca/health-info/influenza-evidence.html>

[Back to start of section](#)

Figure 2E: Number immunized by AHS (Public Health), by week, South Zone (2010-2011)



Source: AHS Zones (doses do not include those delivered by external providers)  
 Note: Immunization coverage rates will be reported at the end of the influenza season  
 For more information on data definitions and sources see [Annex: Data Notes section at the end of this report](#)

[Back to start of section](#)

**Table 2C: AHS (Public Health) delivered influenza immunizations (with cumulative totals), by priority group, South Zone (2010-2011)**

Priority Group	Number Immunized (Week 10 – Mar6-12, 2011)	Cumulative Number Immunized (since Oct 3, 2010)
Long term care staff	0	616
Health care workers	1	1,568
Pregnant women	0	302
Residents of long term care	0	730
65 years of age and over	3	15,600
All children 6 months up to and including 23 months*	Dose #1	11
	Dose #2	19
All children 24 months up to and including 59 months*	Dose #1	5
	Dose #2	0
High risk: 5 years up to and including 8 years*	Dose #1	0
	Dose #2	1
High risk: 9 years up to and including 64 years	1	4,106
Healthy: 5 years up to and including 8 years*	Dose #1	4
	Dose #2	1
Healthy: 9 years up to and including 64 years	25	14,698
<b>Total number of clients who have received 1 dose</b>	<b>50</b>	<b>43,165</b>
<b>Total number of 2nd doses administered to those eligible*</b>	<b>21</b>	<b>812</b>

Source: AHS Zones (doses do not include those delivered by external providers)

\*Children under 9 years of age who have not received at least one dose of seasonal influenza vaccine in past years require two doses, given at least four weeks apart.

Note: Immunization coverage rates will be reported at the end of the influenza season

For more information on data definitions and sources see [Annex: Data Notes section at the end of this report](#)

## SURVEILLANCE AND HEALTH STATUS ASSESSMENT

### Public Health Surveillance

Report Date: March 15, 2011

An influenza report targeted to the general public is available at: <http://www.health.alberta.ca/health-info/influenza-evidence.html>

[Back to start of section](#)

**Table 2D: Influenza immunizations delivered by external partners, by priority group, South Zone (Oct 3-Dec 31, 2010)**

Priority Group	# Immunized Oct 3-Dec 31, 2010	
Long term care staff	558	
Health care workers	3,288	
Pregnant women	205	
Residents of long term care	570	
65 years of age and over	4,248	
All children 6 months up to and including 23 months*	Dose #1	9
	Dose #2**	0
All children 24 months up to and including 59 months*	Dose #1	11
	Dose #2**	0
High risk: 5 years up to and including 8 years*	Dose #1	41
	Dose #2**	0
High risk: 9 years up to and including 64 years	2,188	
Healthy: 5 years up to and including 8 years*	Dose #1	14
	Dose #2**	0
Healthy: 9 years up to and including 64 years	6,507	
<b>Total number of clients who have received 1 dose</b>	<b>17,639</b>	
Total number of 2nd doses administered to those eligible*	0	

Source: AHS Zones (zones are required to report doses of seasonal influenza vaccine administered by community and other providers (e.g. physicians, pharmacists, LTC, WHS/OHS programs) twice during the influenza season. These numbers are from the first report (for doses delivered from Oct 3 to Dec 31, 2010). The remaining doses will be reported at a later date.

\*Children under 9 years of age who have not received at least one dose of seasonal influenza vaccine in past years require two doses, given at least four weeks apart.

\*\* In some cases, it was not possible to separate dose 1's from dose 2's. Therefore, the dose 1 category may contain some 2<sup>nd</sup> doses.

Note: Immunization coverage rates will be reported at the end of the influenza season

For more information on data definitions and sources see [Annex: Data Notes section at the end of this report](#)

## SURVEILLANCE AND HEALTH STATUS ASSESSMENT

### Public Health Surveillance

Report Date: March 15, 2011

An influenza report targeted to the general public is available at: <http://www.health.alberta.ca/health-info/influenza-evidence.html>

## SECTION 3: ZONE 2 - CALGARY

[Back to first page](#)

### Summary

RSV activity continues to decline. A number of indicators are showing decreasing trends, however respiratory outbreak activity continues.

### Laboratory Data (see [Figure 3A](#), [Figure 3B](#), [Figure 3C](#), [Table 3A](#) & [Table 3B](#))

RSV and influenza B are currently the predominant viruses being confirmed in Calgary Zone, although RSV activity continues to decline. The majority (almost 3/4) of the new influenza cases confirmed last week were type B. Since the beginning of the season, a total of 272 cases of influenza have been confirmed in Calgary Zone (43.0% have been identified as influenza A (H3), 15.0% as influenza A (H1N1) 2009, 38.0% as influenza type B and 4.0% as influenza A unsubtype). Compared to the age specific rates in other age groups, the rate for confirmed influenza is highest among infants less than 2 years of age at 8.3 per 10,000.

### Outbreaks (see [Figure 3D](#))

Since the last report, there were three outbreaks reported in Calgary Zone, including two that occurred in schools and one that occurred in a long term care facility. One of the school outbreaks was attributed to influenza B and had a preliminary attack rate of 11%, while the other is currently pending laboratory confirmation. The outbreak in a long term care facility had a preliminary attack rate of 11% and was attributed to RSV%.

### Health Link Alberta Calls (see [Figure 3E](#))

The number of calls to Health Link Alberta for cough or breathing difficulties by residents of Calgary Zone remained relatively unchanged in Week 10 (Mar 6-12, 2011) compared to the previous week.

### Emergency Department/Urgent Care Center Visits and Hospital Admissions (See [Figure 3F](#))

The number of visits and the number of hospital admissions for influenza-like illness (ILI) at the six urban emergency departments/urgent care centers (ED's) in the City of Calgary were 5% lower and 10% higher, respectively, in Week 10 (Mar 6-12, 2011) compared to the previous week.

The number of visits for patients with cough symptoms at the same ED's declined by 7% in Week 10 compared to the previous week, while the number of hospital admissions for this reason was 20% lower.

## SURVEILLANCE AND HEALTH STATUS ASSESSMENT

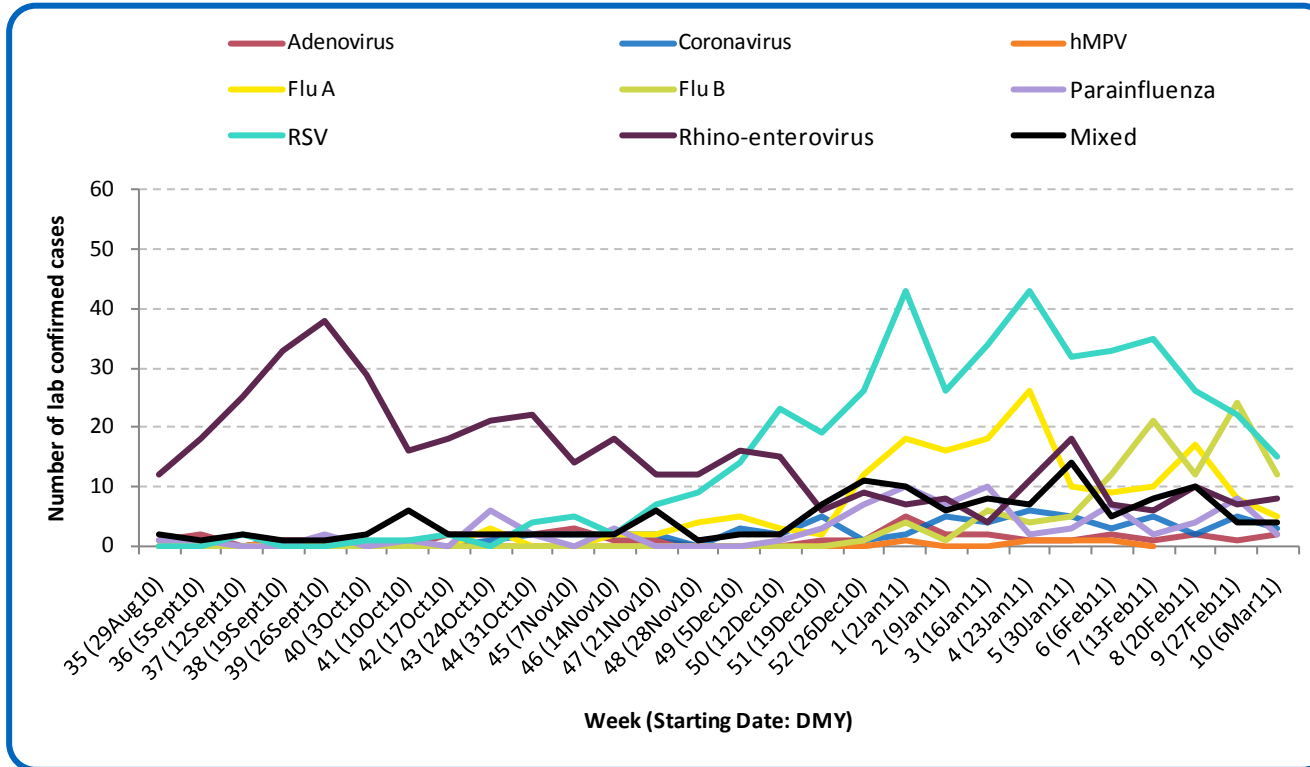
### Public Health Surveillance

Report Date: March 15, 2011

An influenza report targeted to the general public is available at: <http://www.health.alberta.ca/health-info/influenza-evidence.html>

[Back to start of section](#)

Figure 3A: Laboratory confirmed respiratory virus cases, by virus type, by week, Calgary Zone (2010-2011)



Sources: DIAL – Provincial Laboratory and the Outbreak Response Toolkit (includes cases with positive respiratory specimens received on or before Mar 12, 2011). For more information on data definitions and sources see [Annex: Data Notes section at the end of this report](#)

SURVEILLANCE AND HEALTH STATUS ASSESSMENT

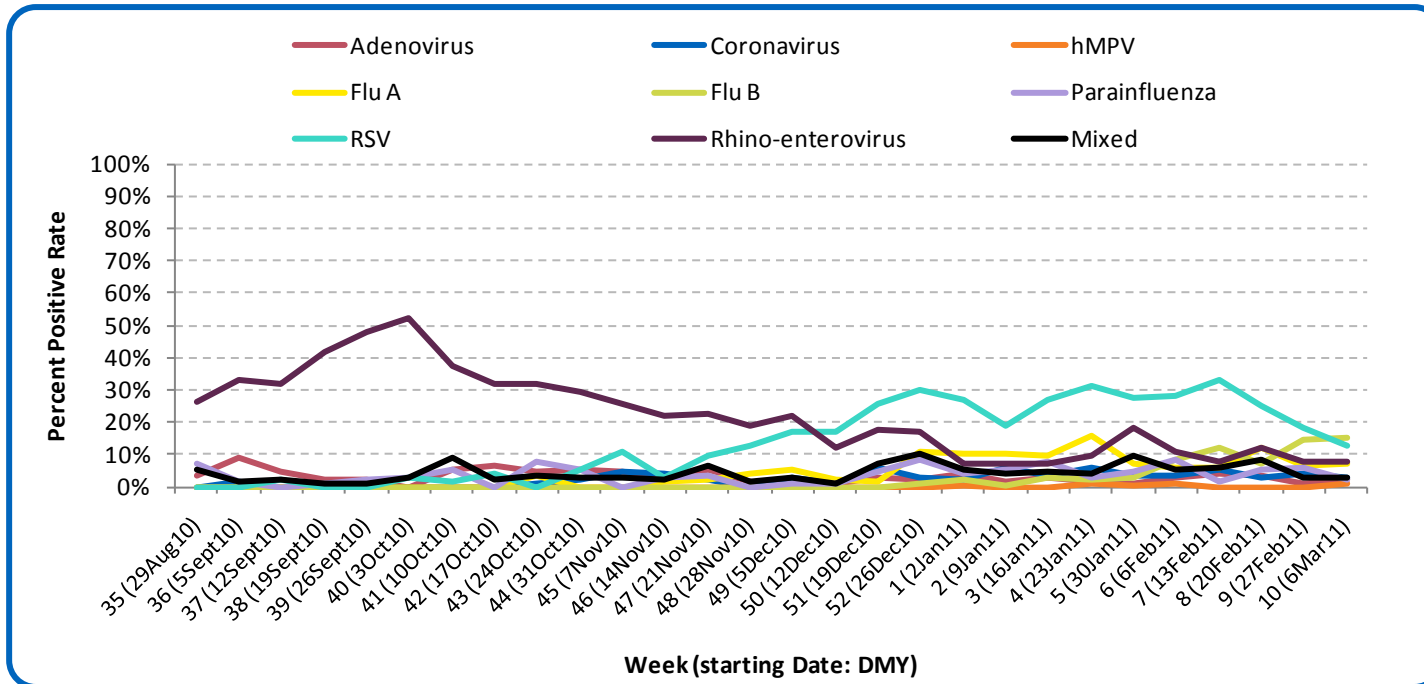
Public Health Surveillance

Report Date: March 15, 2011

An influenza report targeted to the general public is available at: <http://www.health.alberta.ca/health-info/influenza-evidence.html>

[Back to start of section](#)

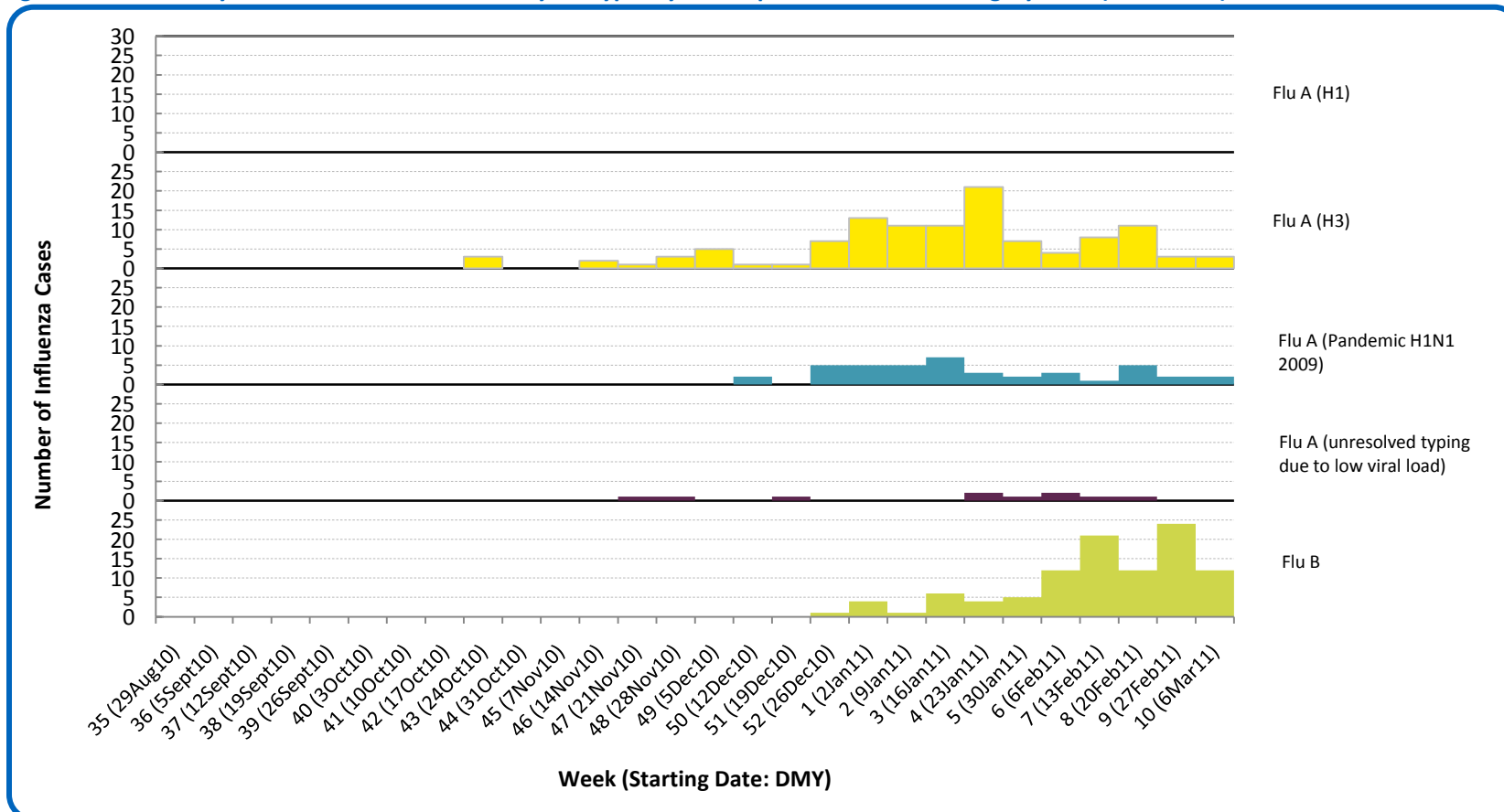
Figure 3B: Respiratory specimen percent positive rates, by virus type, by week, Calgary Zone (2010-2011)



Source: DIAL – Provincial Laboratory (includes cases with positive respiratory specimens received on or before Mar 12, 2011)  
For more information on data definitions and sources see [Annex: Data Notes section at the end of this report](#)

[Back to start of section](#)

Figure 3C: Laboratory confirmed influenza cases, by subtype, by week specimen received, Calgary Zone (2010-2011)



\*Note: 5 specimens were positive for influenza A or B and one or more other virus type(s). One specimen was positive for both influenza A & B.

Source: Outbreak Response Toolkit (includes cases with positive respiratory specimens received on or before Mar 12, 2011).

For more information on data definitions and sources see [Annex: Data Notes section at the end of this report](#)

[Back to start of section](#)

**Table 3A: New influenza cases (and age specific rates), by subtype, by age group, Calgary Zone (Week 10: Mar 6-12, 2011)**

	Flu A (Seasonal-H1)		Flu A (Seasonal-H3)		Flu A (Pandemic H1N1 2009)		Flu A (unresolved typing due to low viral load)		Flu B		Total	
	#	Rate (per 10,000)	#	Rate (per 10,000)	#	Rate (per 10,000)	#	Rate (per 10,000)	#	Rate (per 10,000)	#	Rate (per 10,000)
	0 to <2 years	0	0.0	0	0.0	0	0.0	0	0.0	0	0.0	0
2 to <5 years	0	0.0	0	0.0	1	0.2	0	0.0	0	0.0	1	0.2
5 to <9 years	0	0.0	0	0.0	0	0.0	0	0.0	4	0.6	4	0.6
9 to <18 years	0	0.0	1	0.1	0	0.0	0	0.0	2	0.1	3	0.2
18 to <65 years	0	0.0	2	<0.1	1	<0.1	0	0.0	6	0.1	9	0.1
65 to <75 years	0	0.0	0	0.0	0	0.0	0	0.0	0	0.0	0	0.0
75+ years	0	0.0	0	0.0	0	0.0	0	0.0	0	0.0	0	0.0
<b>Total</b>	<b>0</b>	<b>0.0</b>	<b>3</b>	<b>&lt;0.1</b>	<b>2</b>	<b>&lt;0.1</b>	<b>0</b>	<b>0.0</b>	<b>12</b>	<b>0.1</b>	<b>17</b>	<b>0.1</b>

**Table 3B: Cumulative influenza cases (and age specific rates), by subtype, by age group, Calgary Zone (Aug 29, 2010 – Mar 12, 2011)**

	Flu A (Seasonal-H1)		Flu A (Seasonal-H3)		Flu A (Pandemic H1N1 2009)		Flu A (unresolved typing due to low viral load)		Flu B		Total	
	#	Rate (per 10,000)	#	Rate (per 10,000)	#	Rate (per 10,000)	#	Rate (per 10,000)	#	Rate (per 10,000)	#	Rate (per 10,000)
	0 to <2 years	0	0.0	15	4.0	3	0.8	1	0.3	12	3.2	31
2 to <5 years	0	0.0	8	1.6	3	0.6	1	0.2	8	1.6	20	3.9
5 to <9 years	0	0.0	7	1.1	1	0.2	2	0.3	17	2.7	27	4.3
9 to <18 years	0	0.0	9	0.6	1	0.1	2	0.1	26	1.8	38	2.6
18 to <65 years	0	0.0	56	0.6	33	0.4	3	<0.1	37	0.4	129	1.4
65 to <75 years	0	0.0	7	1.0	1	0.1	0	0.0	1	0.1	9	1.3
75+ years	0	0.0	16	2.7	0	0.0	1	0.2	1	0.2	18	3.0
<b>Total</b>	<b>0</b>	<b>0.0</b>	<b>118</b>	<b>0.9</b>	<b>42</b>	<b>0.3</b>	<b>10</b>	<b>0.1</b>	<b>102</b>	<b>0.8</b>	<b>272</b>	<b>2.0</b>

Source for tables 3A & 3B: Outbreak Response Toolkit (includes cases with positive respiratory specimens received on or before *Mar 12, 2011*).

Population data values used to calculate rates are for June 30, 2009 and are estimated using actual population values from the Alberta Health Care Insurance Plan (AHCIP) Registration File as of March 31, 2009.

For more information on data definitions and sources see [Annex: Data Notes section at the end of this report](#)

## SURVEILLANCE AND HEALTH STATUS ASSESSMENT

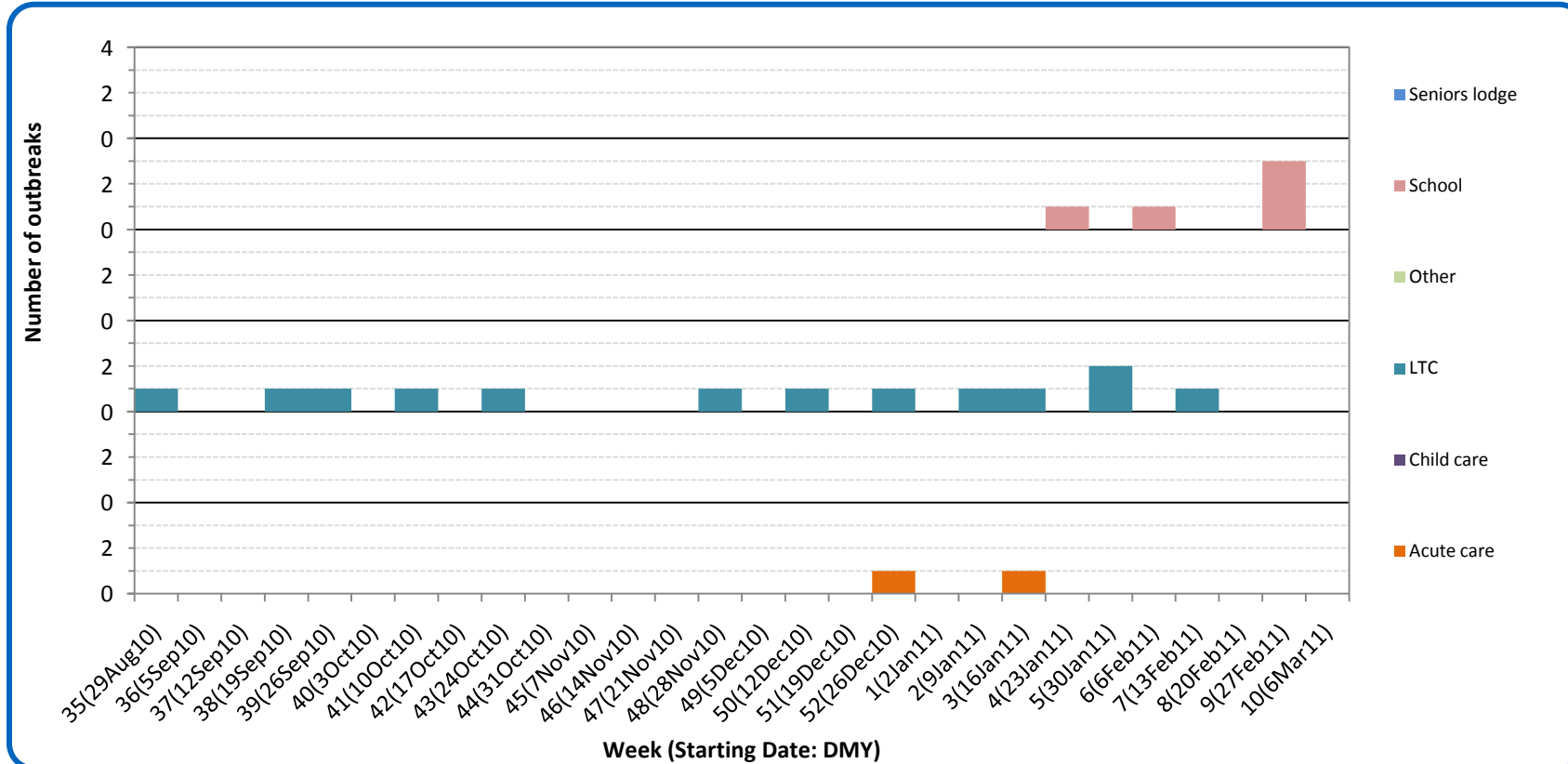
### Public Health Surveillance

Report Date: March 15, 2011

An influenza report targeted to the general public is available at: <http://www.health.alberta.ca/health-info/influenza-evidence.html>

[Back to start of section](#)

Figure 3D: Respiratory outbreaks, by facility type, by onset week, Calgary Zone (2010-2011; school outbreaks may not have a laboratory confirmation)



Source: Alberta Outbreak Reporting Form as of 23:59 on Mar 12, 2011. LTC stands for long term care facility. For more information on data definitions and sources see [Annex: Data Notes section at the end of this report](#)

SURVEILLANCE AND HEALTH STATUS ASSESSMENT

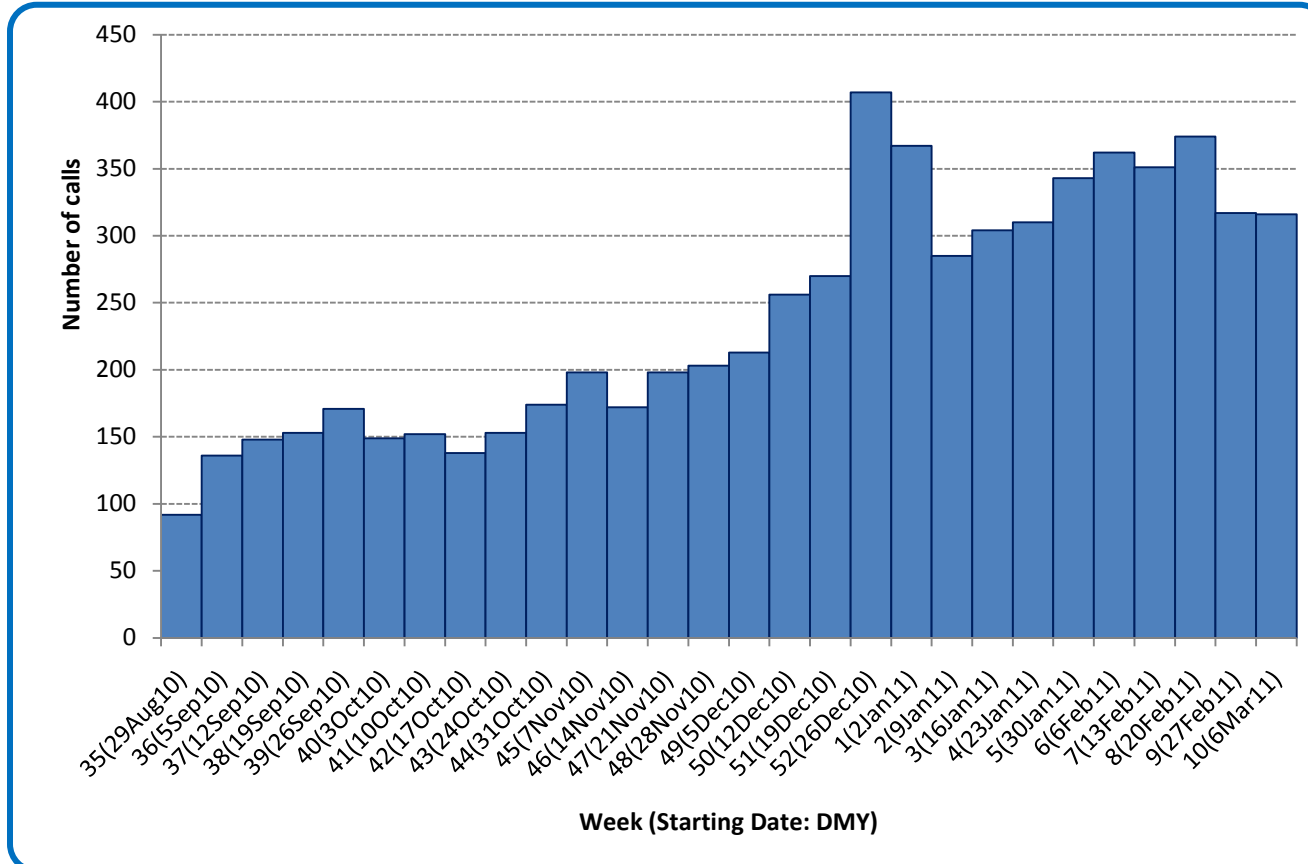
Public Health Surveillance

Report Date: March 15, 2011

An influenza report targeted to the general public is available at: <http://www.health.alberta.ca/health-info/influenza-evidence.html>

[Back to start of section](#)

Figure 3E: Number of calls to Health Link Alberta for cough or breathing difficulties, by week, Calgary Zone (2010-11)



Source: Sharp Focus - Health Link Alberta - via Alberta Real Time Syndromic Surveillance Net (ARTSSN) as of 23:59 on Mar 12, 2011. For more information on data definitions and sources see [Annex: Data Notes section at the end of this report](#)

SURVEILLANCE AND HEALTH STATUS ASSESSMENT

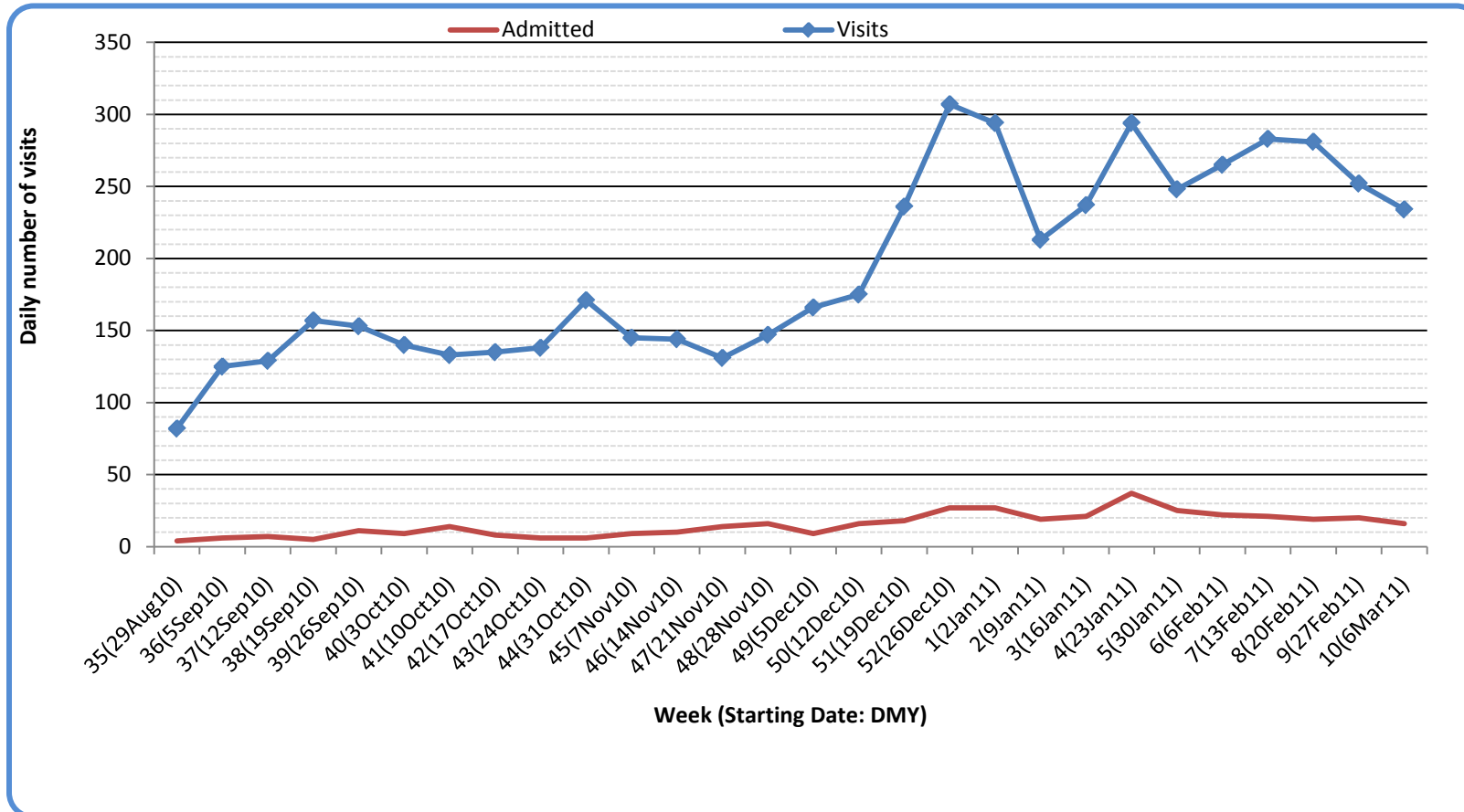
Public Health Surveillance

Report Date: March 15, 2011

An influenza report targeted to the general public is available at: <http://www.health.alberta.ca/health-info/influenza-evidence.html>

[Back to first start of section](#)

Figure 3F: Visits to urban emergency departments/urgent care centers in the City of Calgary with cough symptoms and admissions to hospitals, by visit week (2010-2011)



Source: Alberta Real Time Syndromic Surveillance Net (ARTSSN) as of 23:59 on Mar 12, 2011.  
For more information on data definitions and sources see [Annex: Data Notes section at the end of this report](#)

**SURVEILLANCE AND HEALTH STATUS ASSESSMENT**

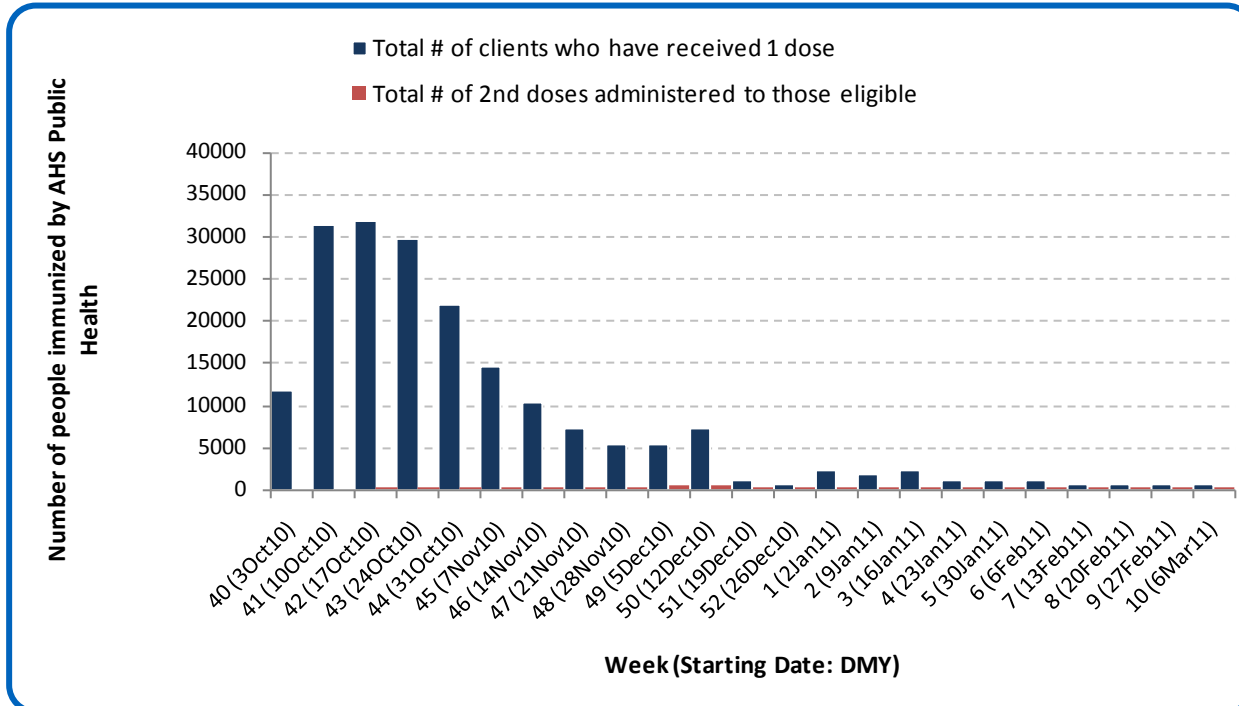
**Public Health Surveillance**

Report Date: March 15, 2011

An influenza report targeted to the general public is available at: <http://www.health.alberta.ca/health-info/influenza-evidence.html>

[Back to start of section](#)

Figure 3G: Number immunized by AHS (Public Health), by week, Calgary Zone (2010-2011)



Source: AHS Zones (doses do not include those delivered by external providers)  
 Note: Immunization coverage rates will be reported at the end of the influenza season  
 For more information on data definitions and sources see [Annex: Data Notes section at the end of this report](#)

[Back to start of section](#)

**Table 3C: AHS (Public Health) delivered influenza immunizations (with cumulative totals), by priority group, Calgary Zone (2010-2011)**

Priority Group	Number Immunized (Week 10 – Mar6-12, 2011)	Cumulative Number Immunized (since Oct 3, 2010)
Long term care staff	0	452
Health care workers	8	5,337
Pregnant women	5	1,972
Residents of long term care	0	706
65 years of age and over	6	44,696
All children 6 months up to and including 23 months*	Dose #1	324
	Dose #2	174
All children 24 months up to and including 59 months*	Dose #1	71
	Dose #2	22
High risk: 5 years up to and including 8 years*	Dose #1	9
	Dose #2	3
High risk: 9 years up to and including 64 years	22	19,977
Healthy: 5 years up to and including 8 years*	Dose #1	25
	Dose #2	3
Healthy: 9 years up to and including 64 years	133	83,949
<b>Total number of clients who have received 1 dose</b>	<b>603</b>	<b>191,623</b>
<b>Total number of 2nd doses administered to those eligible*</b>	<b>202</b>	<b>4,636</b>

Source: AHS Zones (doses do not include those delivered by external providers)

\*Children under 9 years of age who have not received at least one dose of seasonal influenza vaccine in past years require two doses, given at least four weeks apart.

Note: Immunization coverage rates will be reported at the end of the influenza season

For more information on data definitions and sources see [Annex: Data Notes section at the end of this report](#)

## SURVEILLANCE AND HEALTH STATUS ASSESSMENT

### Public Health Surveillance

Report Date: March 15, 2011

An influenza report targeted to the general public is available at: <http://www.health.alberta.ca/health-info/influenza-evidence.html>

[Back to start of section](#)

**Table 3D: Influenza immunizations delivered by external partners, by priority group, Calgary Zone (Oct 3-Dec 31, 2010)**

Priority Group	# Immunized Oct 3-Dec 31, 2010	
Long term care staff	3,348	
Health care workers	13,764	
Pregnant women	1,257	
Residents of long term care	3,539	
65 years of age and over	27,582	
All children 6 months up to and including 23 months*	Dose #1	660
	Dose #2**	0
All children 24 months up to and including 59 months*	Dose #1	523
	Dose #2**	0
High risk: 5 years up to and including 8 years*	Dose #1	788
	Dose #2**	0
High risk: 9 years up to and including 64 years	14,231	
Healthy: 5 years up to and including 8 years*	Dose #1	1,280
	Dose #2**	0
Healthy: 9 years up to and including 64 years	53,436	
<b>Total number of clients who have received 1 dose</b>	<b>120,408</b>	
Total number of 2nd doses administered to those eligible*	0	

Source: AHS Zones (zones are required to report doses of seasonal influenza vaccine administered by community and other providers (e.g. physicians, pharmacists, LTC, WHS/OHS programs) twice during the influenza season. These numbers are from the first report (for doses delivered from Oct 3 to Dec 31, 2010). The remaining doses will be reported at a later date.

\*Children under 9 years of age who have not received at least one dose of seasonal influenza vaccine in past years require two doses, given at least four weeks apart.

\*\*In some cases, it was not possible to separate dose 1's from dose 2's. Therefore, dose 1 category may contain some 2<sup>nd</sup> doses.

Note: Immunization coverage rates will be reported at the end of the influenza season

For more information on data definitions and sources see [Annex: Data Notes section at the end of this report](#)

## SURVEILLANCE AND HEALTH STATUS ASSESSMENT

### Public Health Surveillance

Report Date: March 15, 2011

An influenza report targeted to the general public is available at: <http://www.health.alberta.ca/health-info/influenza-evidence.html>

## SECTION 4: ZONE 3 - CENTRAL

[Back to first page](#)

### Summary

Overall, respiratory virus activity appears to be relatively unchanged in Central Zone.

### Laboratory Data (see [Figure 4A](#), [Figure 4B](#), [Figure 4C](#), [Table 4A](#) & [Table 4B](#))

RSV is still the predominant virus being confirmed in Central Zone. As of the end of Week 10 (Mar 12, 2011), the total number of influenza cases confirmed this season is 87. At this point in the season, the age-specific rate for confirmed cases of influenza (all types) is highest for infants under the age of 2 years (at 9.0 per 10,000) and adults aged 75 years and over (at 7.0 per 10,000).

### Outbreaks (see [Figure 4D](#))

There have been no respiratory outbreaks reported in Central Zone since the end of January, 2011.

### Health Link Alberta Calls (see [Figure 4E](#))

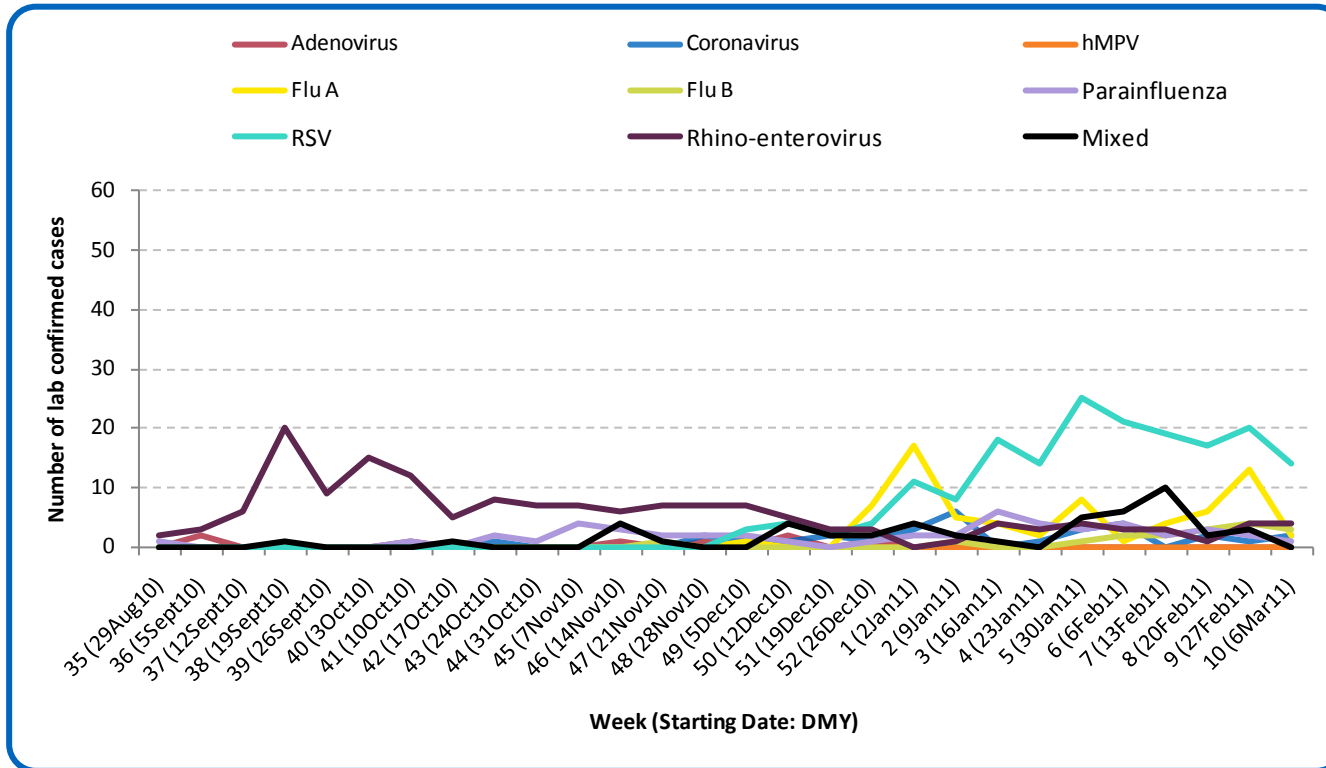
The number of calls to Health Link Alberta by residents of Central Zone for cough or breathing difficulties was 10% higher in Week 10 (Mar 6-12, 2011) compared to Week 9. The weekly call volume related to these symptoms has been gradually increasing since Week 8 (Feb 20-27, 2011).

### Emergency Department/Urgent Care Center Visits and Hospital Admissions

There are no data available from this zone.

[Back to start of section](#)

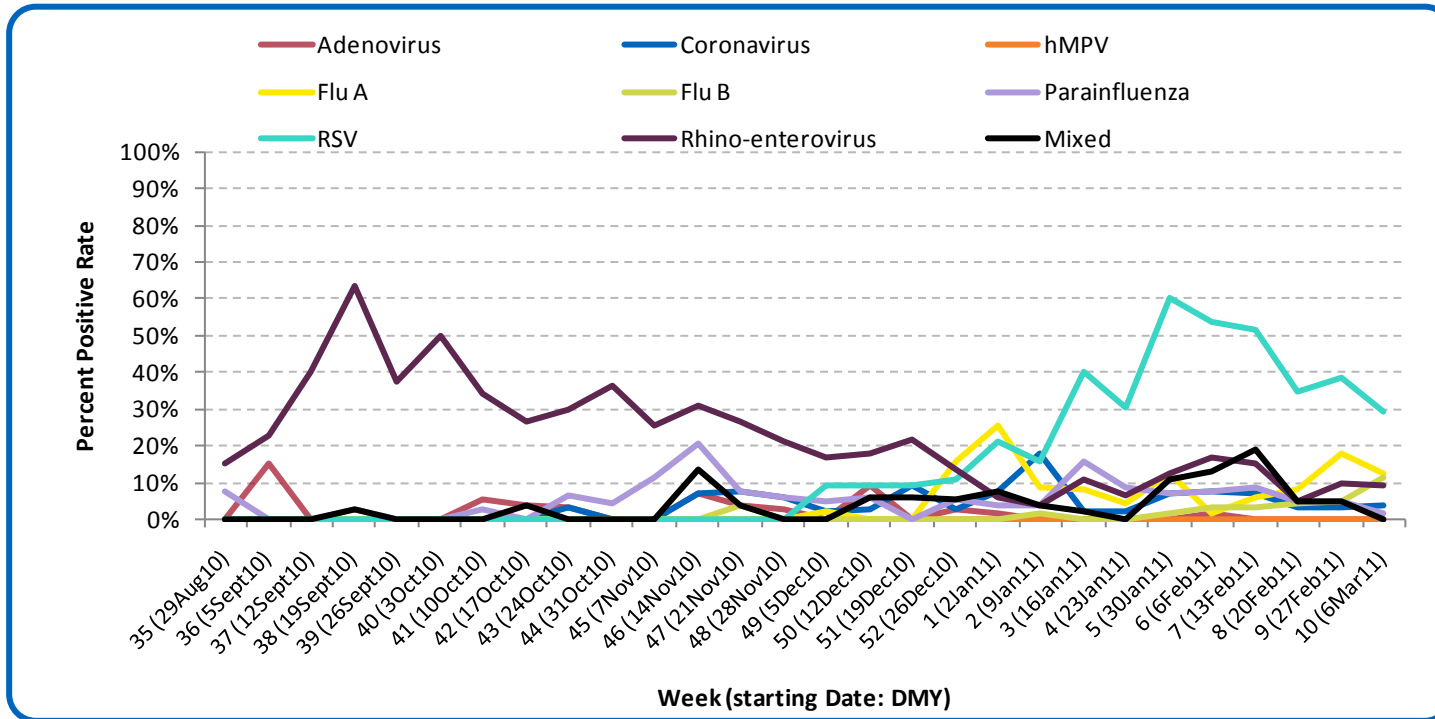
Figure 4A: Laboratory confirmed respiratory virus cases, by virus type, by week, Central Zone (2010-2011)



Sources: DIAL – Provincial Laboratory and the Outbreak Response Toolkit (includes cases with positive respiratory specimens received on or before Mar 12, 2011). For more information on data definitions and sources see [Annex: Data Notes section at the end of this report](#)

[Back to start of section](#)

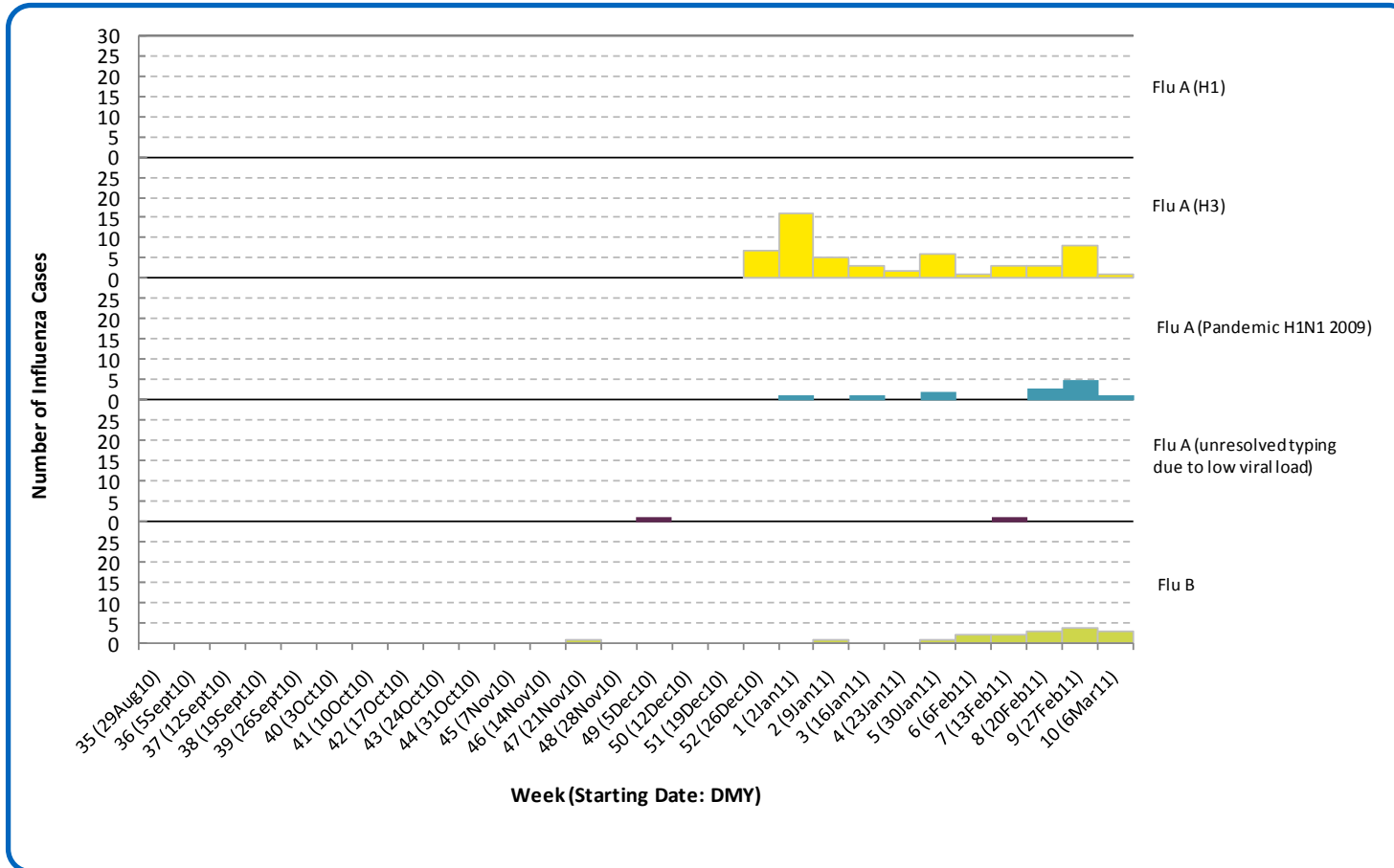
Figure 4B: Respiratory specimen percent positive rates, by virus type, by week, Central Zone (2010-2011)



Source: DIAL – Provincial Laboratory (includes cases with positive respiratory specimens received on or before Mar 12, 2011)  
For more information on data definitions and sources see [Annex: Data Notes section at the end of this report](#)

[Back to start of section](#)

Figure 4C: Laboratory confirmed influenza cases, by subtype, by week specimen received, Central Zone (2010-2011)



\*Note: 5 specimens were positive for influenza A or B and one or more other virus type(s).  
 Source: Outbreak Response Toolkit (includes cases with positive respiratory specimens received on or before Mar 12, 2011).  
 For more information on data definitions and sources see [Annex: Data Notes section at the end of this report](#)

SURVEILLANCE AND HEALTH STATUS ASSESSMENT

Public Health Surveillance

Report Date: March 15, 2011

An influenza report targeted to the general public is available at: <http://www.health.alberta.ca/health-info/influenza-evidence.html>

[Back to start of section](#)

**Table 4A: New influenza cases (and age specific rates), by subtype, by age group, Central Zone (Week 10: Mar 6-12, 2011)**

	Flu A (Seasonal-H1)		Flu A (Seasonal-H3)		Flu A (Pandemic H1N1 2009)		Flu A (unresolved typing due to low viral load)		Flu B		Total	
	#	Rate (per 10,000)	#	Rate (per 10,000)	#	Rate (per 10,000)	#	Rate (per 10,000)	#	Rate (per 10,000)	#	Rate (per 10,000)
0 to <2 years	0	0.0	0	0.0	0	0.0	0	0.0	0	0.0	0	0.0
2 to <5 years	0	0.0	0	0.0	0	0.0	0	0.0	2	1.2	2	1.2
5 to <9 years	0	0.0	0	0.0	0	0.0	0	0.0	1	0.5	1	0.5
9 to <18 years	0	0.0	0	0.0	0	0.0	0	0.0	0	0.0	0	0.0
18 to <65 years	0	0.0	1	<0.1	1	<0.1	0	0.0	0	0.0	2	0.1
65 to <75 years	0	0.0	0	0.0	0	0.0	0	0.0	0	0.0	0	0.0
75+ years	0	0.0	0	0.0	0	0.0	0	0.0	0	0.0	0	0.0
<b>Total</b>	<b>0</b>	<b>0.0</b>	<b>1</b>	<b>&lt;0.1</b>	<b>1</b>	<b>&lt;0.1</b>	<b>0</b>	<b>0.0</b>	<b>3</b>	<b>0.1</b>	<b>5</b>	<b>0.1</b>

**Table 4B: Cumulative influenza cases (and age specific rates), by subtype, by age group, Central Zone (Aug 29, 2010 – Mar 12, 2011)**

	Flu A (Seasonal-H1)		Flu A (Seasonal-H3)		Flu A (Pandemic H1N1 2009)		Flu A (unresolved typing due to low viral load)		Flu B		Total	
	#	Rate (per 10,000)	#	Rate (per 10,000)	#	Rate (per 10,000)	#	Rate (per 10,000)	#	Rate (per 10,000)	#	Rate (per 10,000)
0 to <2 years	0	0.0	7	5.7	0	0.0	0	0.0	4	3.3	11	9.0
2 to <5 years	0	0.0	0	0.0	2	1.2	0	0.0	3	1.7	5	2.9
5 to <9 years	0	0.0	2	0.9	0	0.0	0	0.0	1	0.5	3	1.4
9 to <18 years	0	0.0	2	0.4	2	0.4	0	0.0	3	0.6	7	1.3
18 to <65 years	0	0.0	23	0.8	9	0.3	2	0.1	6	0.2	40	1.4
65 to <75 years	0	0.0	2	0.7	0	0.0	0	0.0	0	0.0	2	0.7
75+ years	0	0.0	19	7.0	0	0.0	0	0.0	0	0.0	19	7.0
<b>Total</b>	<b>0</b>	<b>0.0</b>	<b>55</b>	<b>1.2</b>	<b>13</b>	<b>0.3</b>	<b>2</b>	<b>&lt;0.1</b>	<b>17</b>	<b>0.4</b>	<b>87</b>	<b>2.0</b>

Source for Tables 4A & 4B: Outbreak Response Toolkit (includes cases with positive respiratory specimens received on or before *Mar 12, 2011*).

Population data values used to calculate rates are for June 30, 2009 and are estimated using actual population values from the Alberta Health Care Insurance Plan (AHCIP) Registration File as of March 31, 2009.

For more information on data definitions and sources see [Annex: Data Notes section at the end of this report](#)

## SURVEILLANCE AND HEALTH STATUS ASSESSMENT

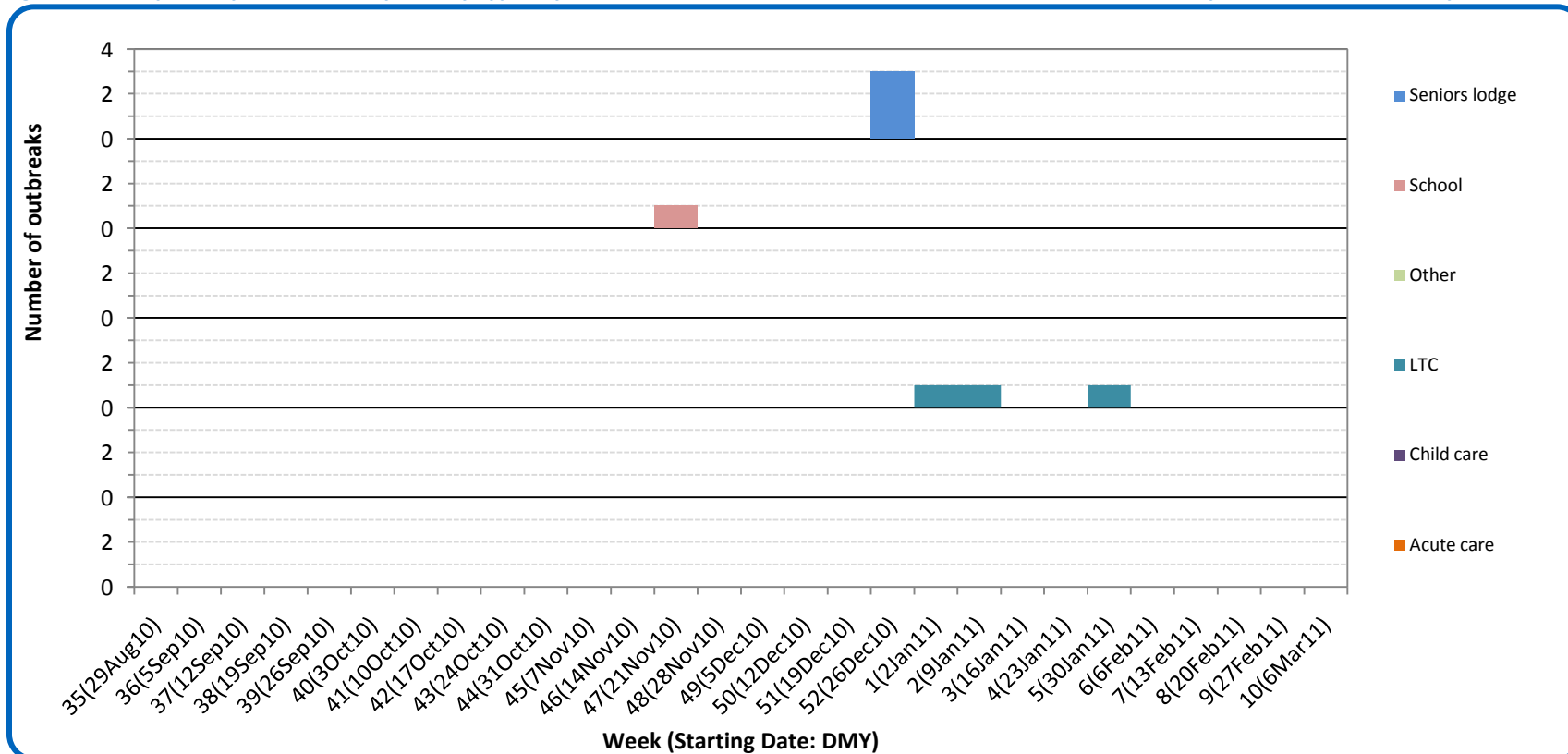
### Public Health Surveillance

Report Date: March 15, 2011

An influenza report targeted to the general public is available at: <http://www.health.alberta.ca/health-info/influenza-evidence.html>

[Back to start of section](#)

Figure 4D: Respiratory outbreaks, by facility type, by onset week, Central Zone (2010-2011; school outbreaks may not have a laboratory confirmation)



Source: Alberta Outbreak Reporting Form as of 23:59 on Mar 12, 2011.

For more information on data definitions and sources see [Annex: Data Notes section at the end of this report](#). LTC stands for long term care facility.

SURVEILLANCE AND HEALTH STATUS ASSESSMENT

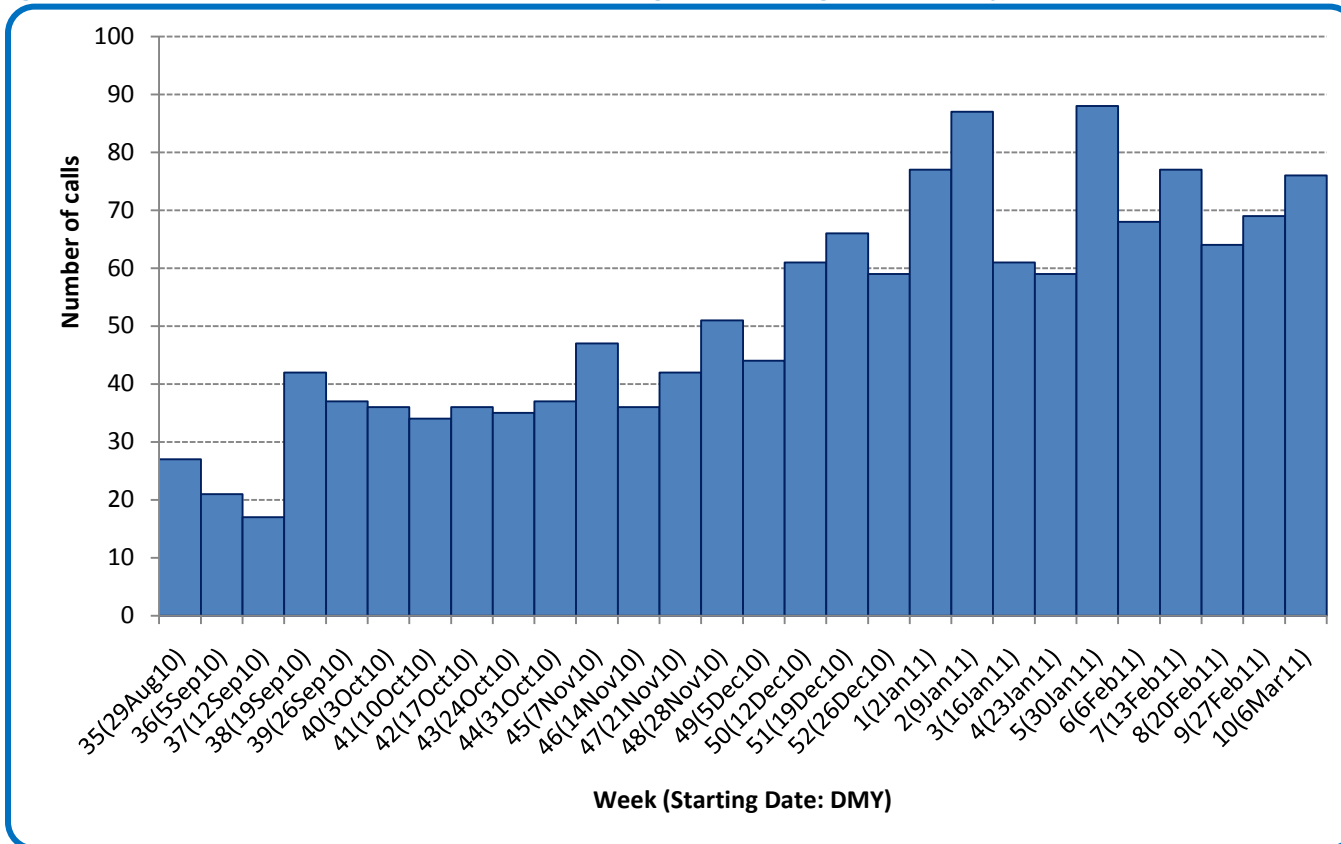
Public Health Surveillance

Report Date: March 15, 2011

An influenza report targeted to the general public is available at: <http://www.health.alberta.ca/health-info/influenza-evidence.html>

[Back to start of section](#)

Figure 4E: Number of calls to Health Link Alberta for cough or breathing difficulties, by week, Central Zone (2010-11)



Source: Sharp Focus - Health Link Alberta - via Alberta Real Time Syndromic Surveillance Net (ARTSSN) as of 23:59 on Mar 12, 2011. For more information on data definitions and sources see [Annex: Data Notes section at the end of this report](#)

**SURVEILLANCE AND HEALTH STATUS ASSESSMENT**

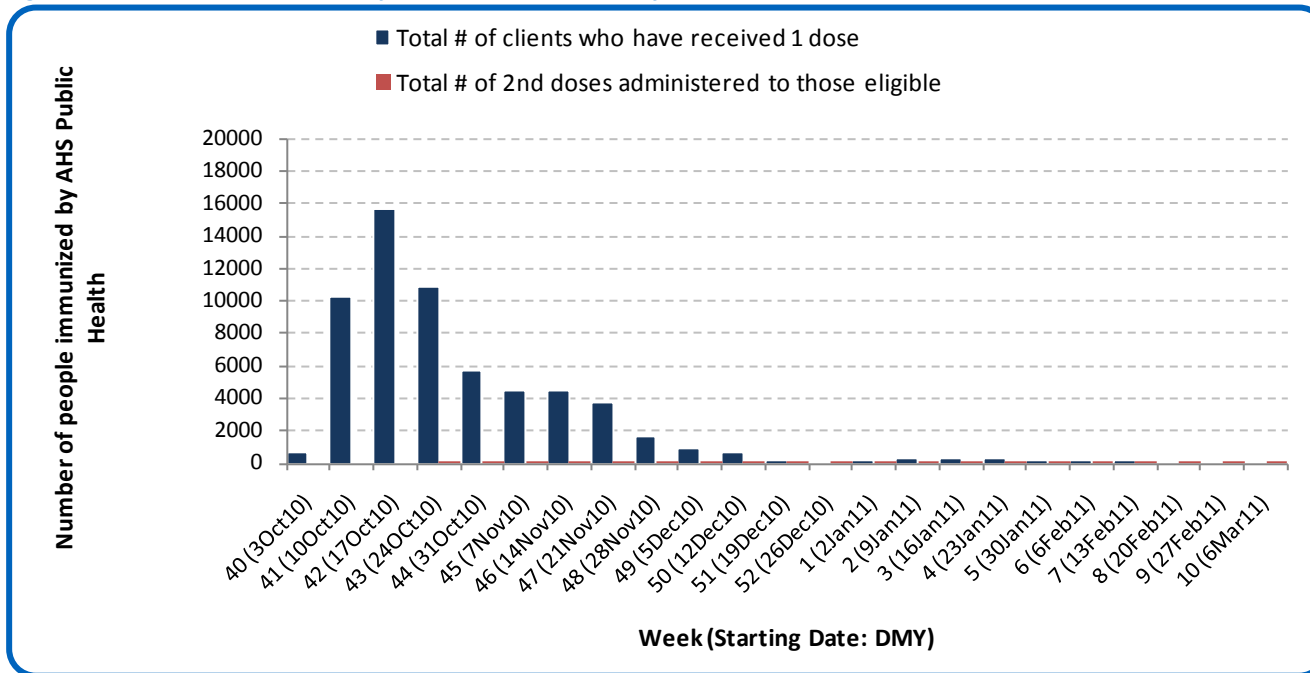
**Public Health Surveillance**

Report Date: March 15, 2011

An influenza report targeted to the general public is available at: <http://www.health.alberta.ca/health-info/influenza-evidence.html>

[Back to start of section](#)

Figure 4F: Number immunized by AHS (Public Health), by week, Central Zone (2010-2011)



Source: AHS Zones (doses do not include those delivered by external providers)  
 Note: Immunization coverage rates will be reported at the end of the influenza season  
 For more information on data definitions and sources see [Annex: Data Notes section at the end of this report](#)

[Back to start of section](#)

**Table 4C: AHS (Public Health) delivered influenza immunizations (with cumulative totals), by priority group, Central Zone (2010-2011)**

Priority Group	Number Immunized (Week 10 – Mar6-12, 2011)	Cumulative Number Immunized (since Oct 3, 2010)
Long term care staff	0	421
Health care workers	6	2,611
Pregnant women	0	427
Residents of long term care	0	1,104
65 years of age and over	5	22,158
All children 6 months up to and including 23 months*	Dose #1	41
	Dose #2	46
All children 24 months up to and including 59 months*	Dose #1	9
	Dose #2	5
High risk: 5 years up to and including 8 years*	Dose #1	0
	Dose #2	0
High risk: 9 years up to and including 64 years	4	6,878
Healthy: 5 years up to and including 8 years*	Dose #1	4
	Dose #2	3
Healthy: 9 years up to and including 64 years	18	20,784
<b>Total number of clients who have received 1 dose</b>	<b>87</b>	<b>61,674</b>
<b>Total number of 2nd doses administered to those eligible*</b>	<b>54</b>	<b>1,317</b>

Source: AHS Zones (doses do not include those delivered by external providers)

\*Children under 9 years of age who have not received at least one dose of seasonal influenza vaccine in past years require two doses, given at least four weeks apart.

Note: Immunization coverage rates will be reported at the end of the influenza season

For more information on data definitions and sources see [Annex: Data Notes section at the end of this report](#)

## SURVEILLANCE AND HEALTH STATUS ASSESSMENT

### Public Health Surveillance

Report Date: March 15, 2011

An influenza report targeted to the general public is available at: <http://www.health.alberta.ca/health-info/influenza-evidence.html>

[Back to start of section](#)

**Table 4D: Influenza immunizations delivered by external partners, by priority group, Central Zone (Oct 3-Dec 31, 2010)**

Priority Group	# Immunized Oct 3-Dec 31, 2010	
Long term care staff	827	
Health care workers	5,744	
Pregnant women	8	
Residents of long term care	1,748	
65 years of age and over	4,063	
All children 6 months up to and including 23 months*	Dose #1	1
	Dose #2**	0
All children 24 months up to and including 59 months*	Dose #1	4
	Dose #2**	0
High risk: 5 years up to and including 8 years*	Dose #1	8
	Dose #2**	0
High risk: 9 years up to and including 64 years	1,609	
Healthy: 5 years up to and including 8 years*	Dose #1	15
	Dose #2**	0
Healthy: 9 years up to and including 64 years	3,762	
<b>Total number of clients who have received 1 dose</b>	<b>17,789</b>	
Total number of 2nd doses administered to those eligible*	0	

Source: AHS Zones (zones are required to report doses of seasonal influenza vaccine administered by community and other providers (e.g. physicians, pharmacists, LTC, WHS/OHS programs) twice during the influenza season. These numbers are from the first report (for doses delivered from Oct 3 to Dec 31, 2010). The remaining doses will be reported at a later date.

\*Children under 9 years of age who have not received at least one dose of seasonal influenza vaccine in past years require two doses, given at least four weeks apart.

\*\*In some cases, it was not possible to separate dose 1's from dose 2's. Therefore, dose 1 category may contain some 2<sup>nd</sup> doses.

Note: Immunization coverage rates will be reported at the end of the influenza season

For more information on data definitions and sources see [Annex: Data Notes section at the end of this report](#)

## SURVEILLANCE AND HEALTH STATUS ASSESSMENT

### Public Health Surveillance

Report Date: March 15, 2011

An influenza report targeted to the general public is available at: <http://www.health.alberta.ca/health-info/influenza-evidence.html>

## SECTION 5: ZONE 4 – EDMONTON

[Back to first page](#)

### Summary

Overall, respiratory virus activity appears to be decreasing in Edmonton Zone.

### Laboratory Data (see [Figure 5A](#), [Figure 5B](#), [Figure 5C](#), [Table 5A](#) & [Table 5B](#))

RSV activity continues to decline in Edmonton Zone. Similar to what was observed for the province, the number of influenza cases confirmed in Edmonton Zone in Week 10 (Mar 6-12, 2011) decreased 65% from the previous week. The total number of influenza cases confirmed in this part of the province this season is 289. The age-specific rate for confirmed influenza (all types) for infants less than 2 years of age is higher compared to other age groups, at 16.0 per 10,000 (compared to 6.3 per 10,000 or lower for other age groups).

### Outbreaks (see [Figure 5D](#))

There were no respiratory outbreaks reported in Edmonton Zone this week.

### Health Link Alberta Calls (see [Figure 5E](#))

The number of calls to Health Link Alberta by residents of Edmonton Zone for cough or breathing difficulties was 13% lower in Week 10 (Mar 6-12, 2011) compared to the previous week. This indicator has been declining for the past four weeks.

### Emergency Department/Urgent Care Center Visits and Hospital Admissions (See [Figure 5F](#))

The number of visits to nine emergency departments/urgent care centers for ILI symptoms remained relatively unchanged from Week 9 (Feb 27, 2011) to Week 10 (Mar 6-12, 2011). The number of hospital admissions decreased by 10%.

The number of visits and the number of hospital admissions for cough/congestion symptoms increased as well, by 6% and 50%, respectively.

## SURVEILLANCE AND HEALTH STATUS ASSESSMENT

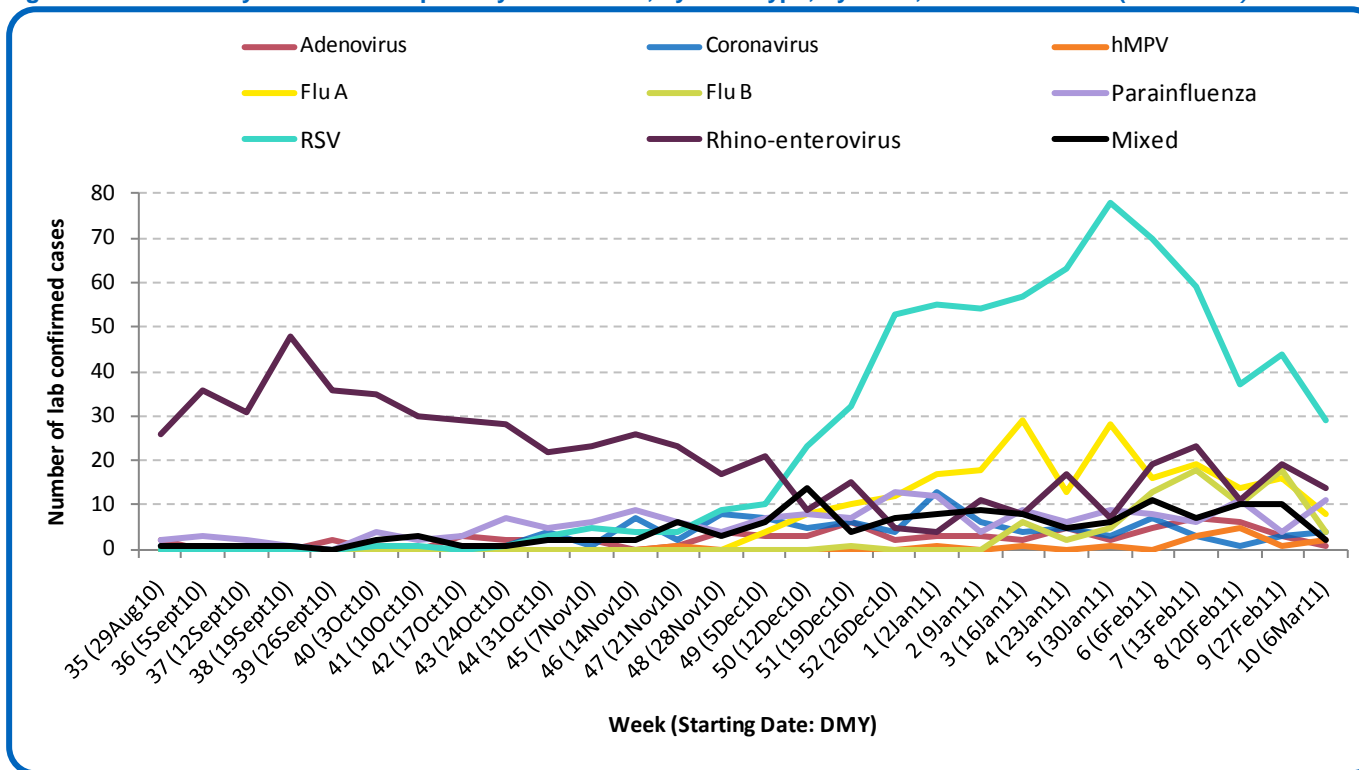
### Public Health Surveillance

Report Date: March 15, 2011

An influenza report targeted to the general public is available at: <http://www.health.alberta.ca/health-info/influenza-evidence.html>

[Back to start of section](#)

Figure 5A: Laboratory confirmed respiratory virus cases, by virus type, by week, Edmonton Zone (2010-2011)



Sources: DIAL – Provincial Laboratory and the Outbreak Response Toolkit (includes cases with positive respiratory specimens received on or before Mar 12, 2011). For more information on data definitions and sources see [Annex: Data Notes section at the end of this report](#)

SURVEILLANCE AND HEALTH STATUS ASSESSMENT

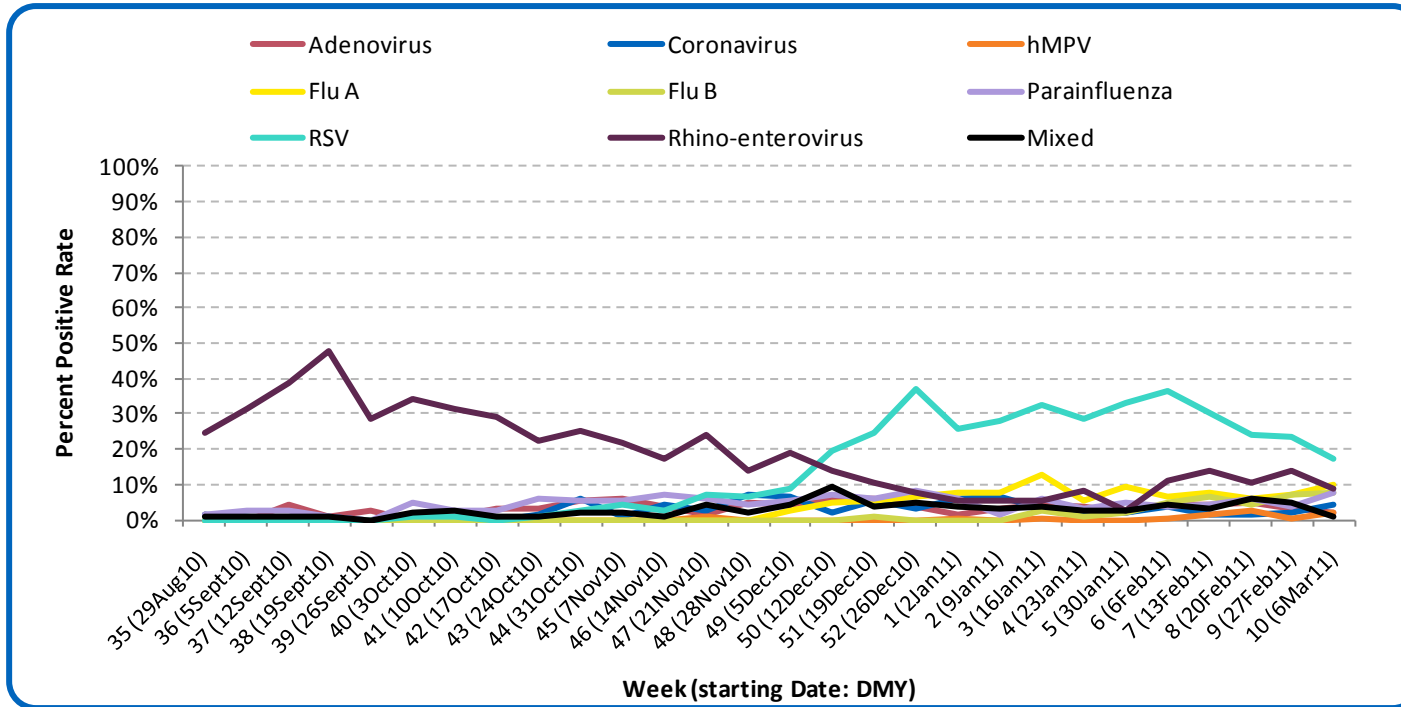
Public Health Surveillance

Report Date: March 15, 2011

An influenza report targeted to the general public is available at: <http://www.health.alberta.ca/health-info/influenza-evidence.html>

[Back to start of section](#)

Figure 5B: Respiratory specimen percent positive rates, by virus type, by week, Edmonton Zone (2010-2011)

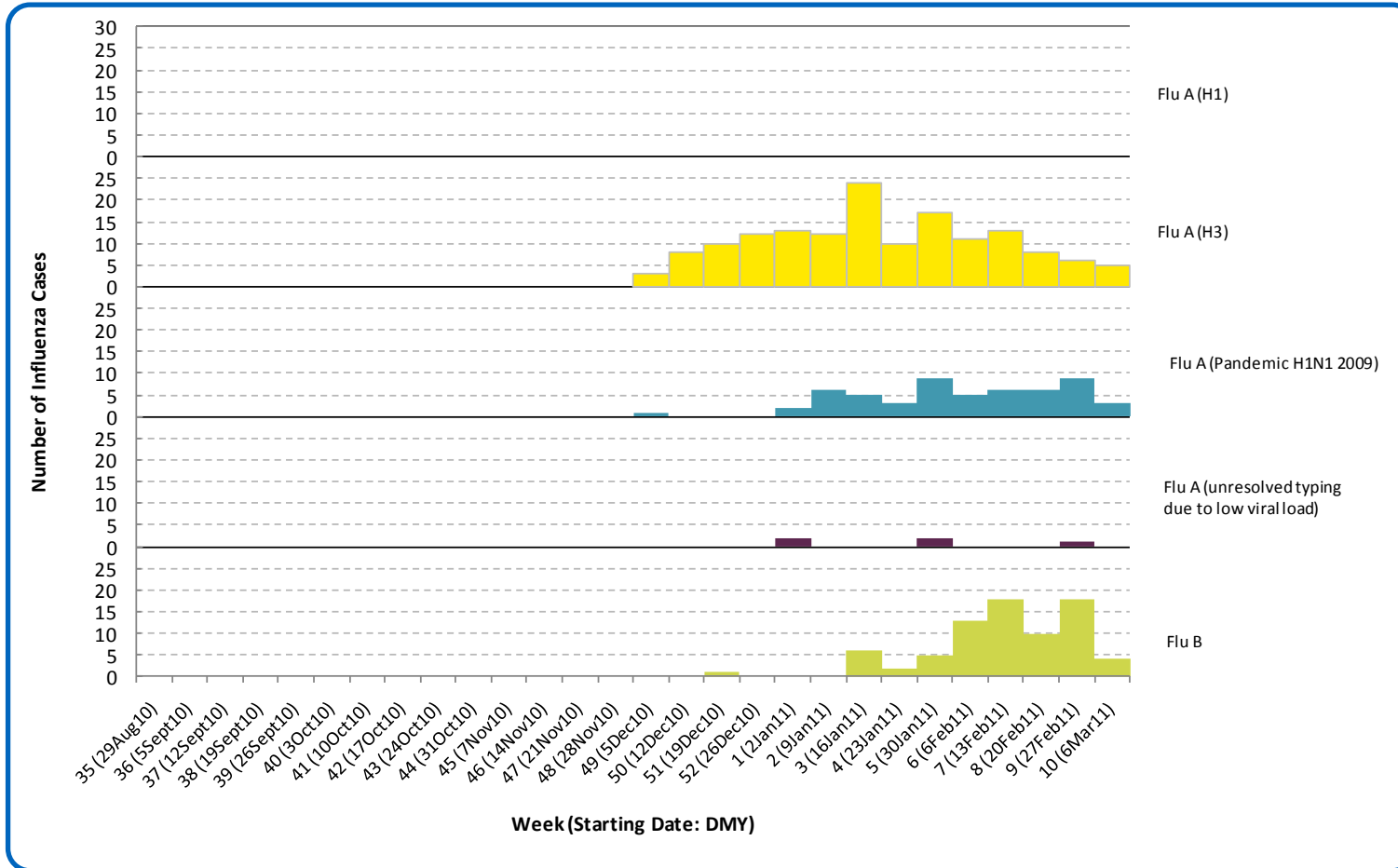


Source: DIAL – Provincial Laboratory (includes cases with positive respiratory specimens received on or before Mar 12, 2011)

For more information on data definitions and sources see [Annex: Data Notes section at the end of this report](#)

[Back to start of section](#)

Figure 5C: Laboratory confirmed influenza cases, by subtype, by week specimen received, Edmonton Zone (2010-2011)



\*Note: 4 specimens were positive for influenza A or B and one or more other virus type(s).

Source: Outbreak Response Toolkit (includes cases with positive respiratory specimens received on or before Mar 12, 2011).

For more information on data definitions and sources see [Annex: Data Notes section at the end of this report](#)

SURVEILLANCE AND HEALTH STATUS ASSESSMENT

Public Health Surveillance

Report Date: March 15, 2011

An influenza report targeted to the general public is available at: <http://www.health.alberta.ca/health-info/influenza-evidence.html>

[Back to start of section](#)

**Table 5A: New influenza cases (and age specific rates), by subtype, by age group, Edmonton Zone (Week 10: Mar 6-12, 2011)**

	Flu A (Seasonal-H1)		Flu A (Seasonal-H3)		Flu A (Pandemic H1N1 2009)		Flu A (unresolved typing due to low viral load)		Flu B		Total	
	#	Rate (per 10,000)	#	Rate (per 10,000)	#	Rate (per 10,000)	#	Rate (per 10,000)	#	Rate (per 10,000)	#	Rate (per 10,000)
	0 to <2 years	0	0.0	1	0.3	0	0.0	0	0.0	1	0.3	2
2 to <5 years	0	0.0	0	0.0	0	0.0	0	0.0	0	0.0	0	0.0
5 to <9 years	0	0.0	0	0.0	0	0.0	0	0.0	0	0.0	0	0.0
9 to <18 years	0	0.0	1	0.1	0	0.0	0	0.0	1	0.1	2	0.2
18 to <65 years	0	0.0	3	<0.1	3	<0.1	0	0.0	1	<0.1	7	0.1
65 to <75 years	0	0.0	0	0.0	0	0.0	0	0.0	1	0.1	1	0.1
75+ years	0	0.0	0	0.0	0	0.0	0	0.0	0	0.0	0	0.0
<b>Total</b>	<b>0</b>	<b>0.0</b>	<b>5</b>	<b>&lt;0.1</b>	<b>3</b>	<b>&lt;0.1</b>	<b>0</b>	<b>0.0</b>	<b>4</b>	<b>&lt;0.1</b>	<b>12</b>	<b>0.1</b>

**Table 5B: Cumulative influenza cases (and age specific rates), by subtype, by age group, Edmonton Zone (Aug 29, 2010 – Mar 12, 2011)**

	Flu A (Seasonal-H1)		Flu A (Seasonal-H3)		Flu A (Pandemic H1N1 2009)		Flu A (unresolved typing due to low viral load)		Flu B		Total	
	#	Rate (per 10,000)	#	Rate (per 10,000)	#	Rate (per 10,000)	#	Rate (per 10,000)	#	Rate (per 10,000)	#	Rate (per 10,000)
	0 to <2 years	0	0.0	26	8.6	8	2.7	1	0.3	13	4.3	48
2 to <5 years	0	0.0	14	3.4	3	0.7	1	0.2	8	1.9	26	6.3
5 to <9 years	0	0.0	7	1.4	3	0.6	0	0.0	12	2.3	22	4.3
9 to <18 years	0	0.0	6	0.5	2	0.2	0	0.0	26	2.1	34	2.7
18 to <65 years	0	0.0	59	0.8	39	0.5	2	0.0	12	0.2	112	1.5
65 to <75 years	0	0.0	8	1.2	0	0.0	0	0.0	3	0.4	11	1.6
75+ years	0	0.0	32	5.4	0	0.0	1	0.2	3	0.5	36	6.1
<b>Total</b>	<b>0</b>	<b>0.0</b>	<b>152</b>	<b>1.3</b>	<b>55</b>	<b>0.5</b>	<b>5</b>	<b>&lt;0.1</b>	<b>77</b>	<b>0.7</b>	<b>289</b>	<b>2.6</b>

Source for tables 5A & 5B: Outbreak Response Toolkit (includes cases with positive respiratory specimens received on or before Mar 12, 2011).

Population data values used to calculate rates are for June 30, 2009 and are estimated using actual population values from the Alberta Health Care Insurance Plan (AHCIP) Registration File as of March 31, 2009.

For more information on data definitions and sources see [Annex: Data Notes section at the end of this report](#)

## SURVEILLANCE AND HEALTH STATUS ASSESSMENT

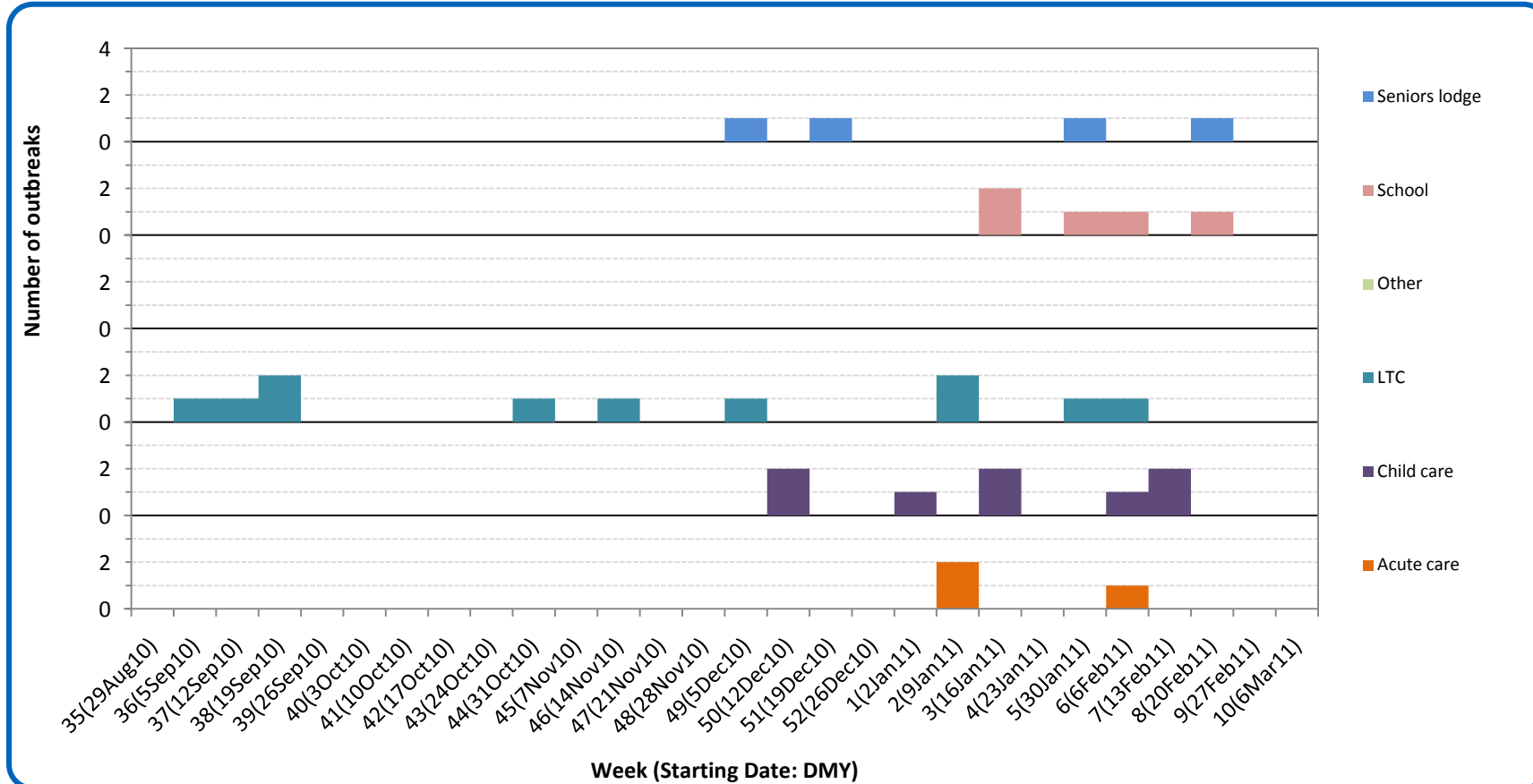
### Public Health Surveillance

Report Date: March 15, 2011

An influenza report targeted to the general public is available at: <http://www.health.alberta.ca/health-info/influenza-evidence.html>

[Back to start of section](#)

Figure 5D: Respiratory outbreaks, by facility type, by onset week, Edmonton Zone (2010-2011; school outbreaks may not have a laboratory confirmation)



Source: Alberta Outbreak Reporting Form as of 23:59 on Mar 12, 2011. LTC stands for long term care facility. For more information on data definitions and sources see [Annex: Data Notes section at the end of this report](#)

SURVEILLANCE AND HEALTH STATUS ASSESSMENT

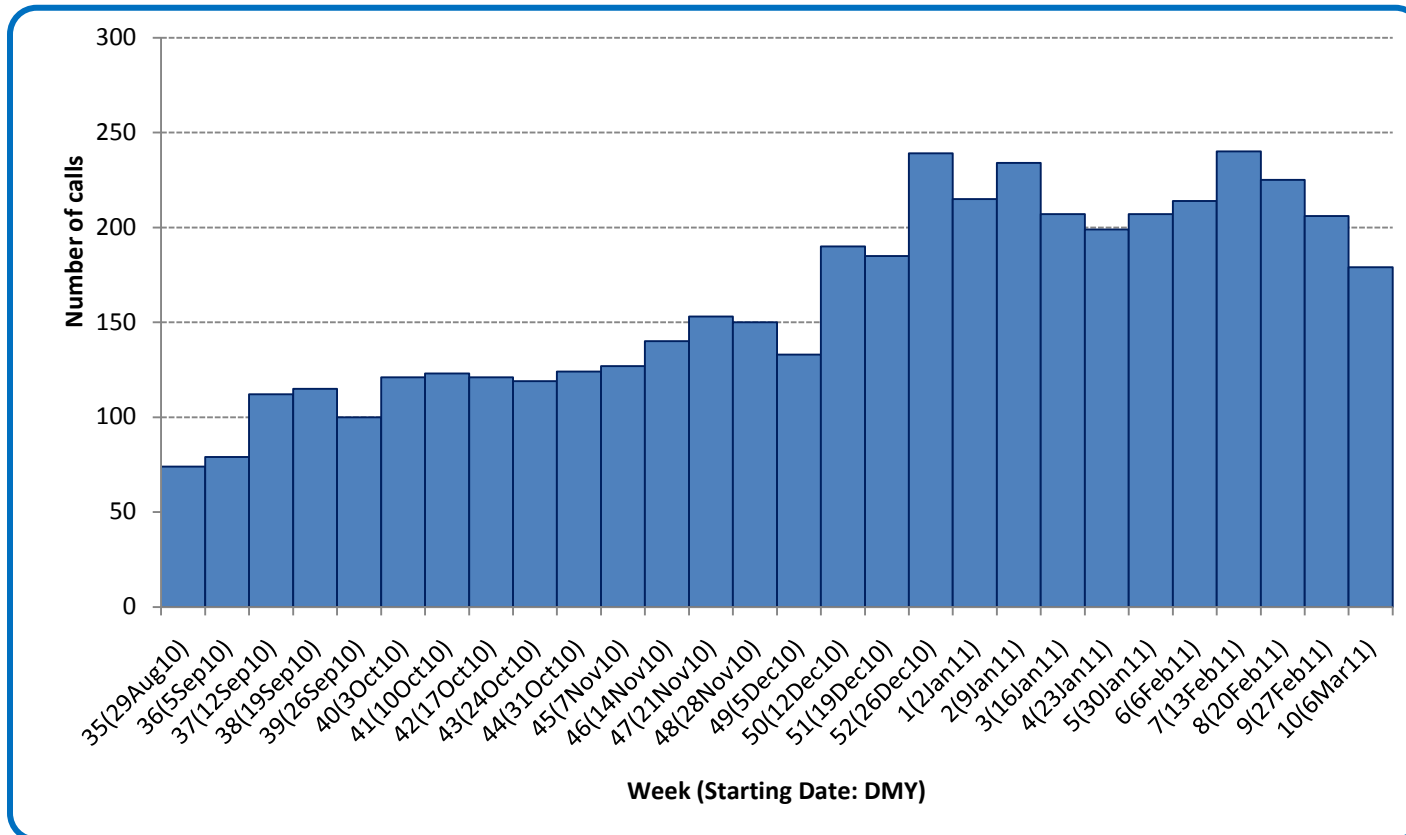
Public Health Surveillance

Report Date: March 15, 2011

An influenza report targeted to the general public is available at: <http://www.health.alberta.ca/health-info/influenza-evidence.html>

[Back to start of section](#)

Figure 5E: Number of calls to Health Link Alberta for cough or breathing difficulties, by week, Edmonton Zone (2010-11)



Source: Sharp Focus - Health Link Alberta - via Alberta Real Time Syndromic Surveillance Net (ARTSSN) as of 23:59 on Mar 12, 2011. For more information on data definitions and sources see [Annex: Data Notes section at the end of this report](#)

SURVEILLANCE AND HEALTH STATUS ASSESSMENT

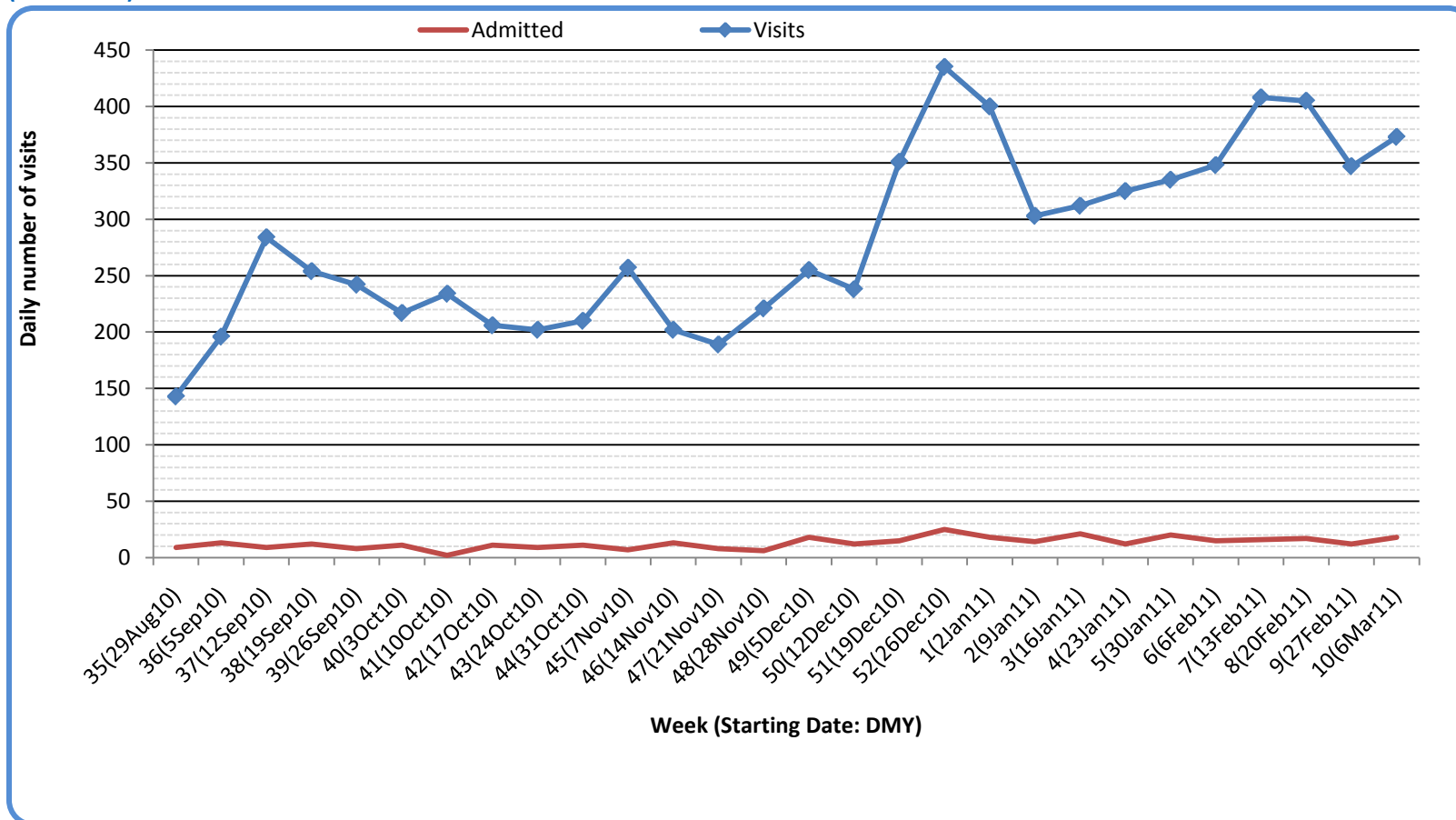
Public Health Surveillance

Report Date: March 15, 2011

An influenza report targeted to the general public is available at: <http://www.health.alberta.ca/health-info/influenza-evidence.html>

[Back to start of section](#)

Figure 5F: Visits to emergency departments/urgent care centers for cough/congestion and admissions to hospitals, Edmonton Zone, by visit week (2010-2011)



Source: Alberta Real Time Syndromic Surveillance (ARTSSN) as of 23:59 on Mar 12, 2011.  
For more information on data definitions and sources see [Annex: Data Notes section at the end of this report](#)

**SURVEILLANCE AND HEALTH STATUS ASSESSMENT**

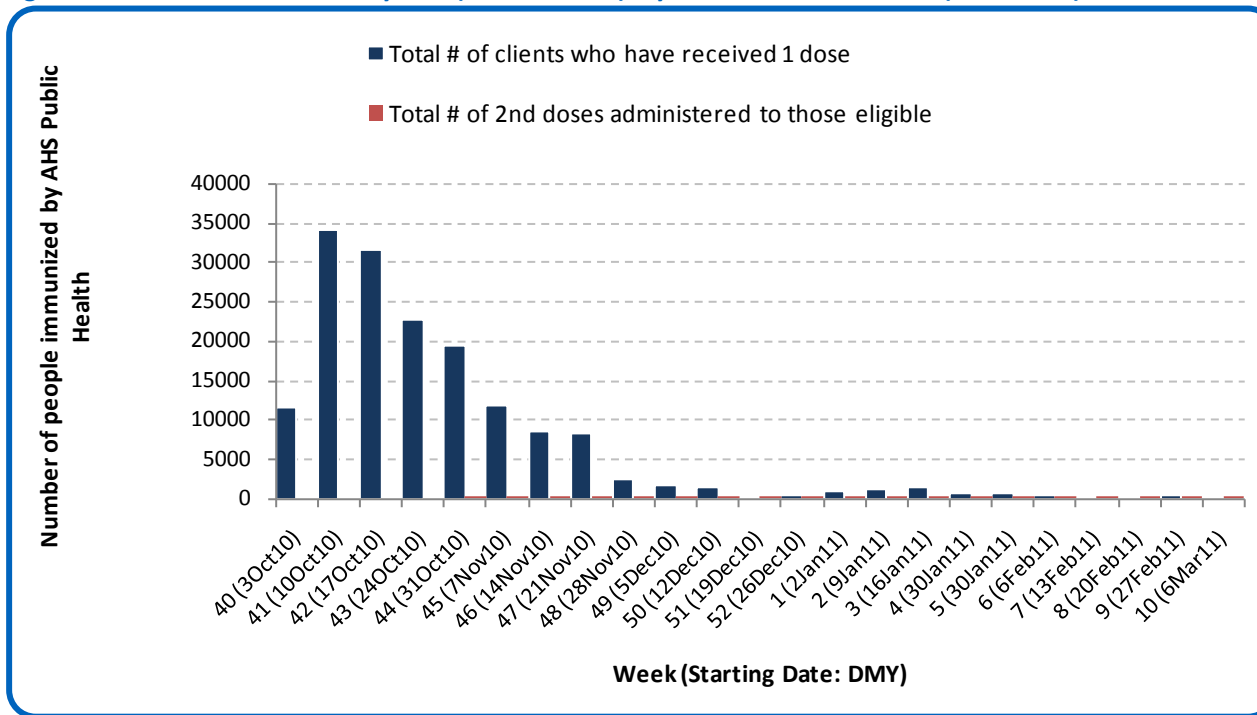
**Public Health Surveillance**

Report Date: March 15, 2011

An influenza report targeted to the general public is available at: <http://www.health.alberta.ca/health-info/influenza-evidence.html>

[Back to start of section](#)

Figure 5G: Number immunized by AHS (Public Health), by week, Edmonton Zone (2010-2011)



Source: AHS Zones (doses do not include those delivered by external providers)  
 Note: Immunization coverage rates will be reported at the end of the influenza season  
 For more information on data definitions and sources see [Annex: Data Notes section at the end of this report](#)

[Back to start of section](#)

**Table 5C: AHS (Public Health) delivered influenza immunizations (with cumulative totals), by priority group, Edmonton Zone (2010-2011)**

Priority Group	Number Immunized (Week 10 – Mar6-12, 2011)	Cumulative Number Immunized (since Oct 3, 2010)
Long term care staff	3	327
Health care workers	2	4,802
Pregnant women	2	1,443
Residents of long term care	0	1,051
65 years of age and over	6	48,497
All children 6 months up to and including 23 months*	Dose #1	66
	Dose #2	59
All children 24 months up to and including 59 months*	Dose #1	9
	Dose #2	1
High risk: 5 years up to and including 8 years*	Dose #1	1
	Dose #2	0
High risk: 9 years up to and including 64 years	11	17,146
Healthy: 5 years up to and including 8 years*	Dose #1	9
	Dose #2	2
Healthy: 9 years up to and including 64 years	52	67,788
<b>Total number of clients who have received 1 dose</b>	<b>161</b>	<b>161,678</b>
<b>Total number of 2nd doses administered to those eligible*</b>	<b>62</b>	<b>2,773</b>

Source: AHS Zones (doses do not include those delivered by external providers)

\*Children under 9 years of age who have not received at least one dose of seasonal influenza vaccine in past years require two doses, given at least four weeks apart.

Note: Immunization coverage rates will be reported at the end of the influenza season

For more information on data definitions and sources see [Annex: Data Notes section at the end of this report](#)

## SURVEILLANCE AND HEALTH STATUS ASSESSMENT

### Public Health Surveillance

Report Date: March 15, 2011

An influenza report targeted to the general public is available at: <http://www.health.alberta.ca/health-info/influenza-evidence.html>

[Back to start of section](#)

**Table 5D: Influenza immunizations delivered by external partners, by priority group, Edmonton Zone (Oct 3-Dec 31, 2010)**

Priority Group	# Immunized Oct 3-Dec 31, 2010	
Long term care staff	926	
Health care workers	8,917	
Pregnant women	166	
Residents of long term care	1,094	
65 years of age and over	15,950	
All children 6 months up to and including 23 months*	Dose #1	295
	Dose #2**	48
All children 24 months up to and including 59 months*	Dose #1	504
	Dose #2**	27
High risk: 5 years up to and including 8 years*	Dose #1	848
	Dose #2**	2
High risk: 9 years up to and including 64 years	10,373	
Healthy: 5 years up to and including 8 years*	Dose #1	915
	Dose #2**	5
Healthy: 9 years up to and including 64 years	22,493	
<b>Total number of clients who have received 1 dose</b>	<b>62,481</b>	
Total number of 2nd doses administered to those eligible*	82	

Source: AHS Zones (zones are required to report doses of seasonal influenza vaccine administered by community and other providers (e.g. physicians, pharmacists, LTC, WHS/OHS programs) twice during the influenza season. These numbers are from the first report (for doses delivered from Oct 3 to Dec 31, 2010). The remaining doses will be reported at a later date.

\*Children under 9 years of age who have not received at least one dose of seasonal influenza vaccine in past years require two doses, given at least four weeks apart.

\*\*In some cases, it was not possible to separate dose 1's from dose 2's. Therefore, dose 1 category may contain some 2<sup>nd</sup> doses.

Note: Immunization coverage rates will be reported at the end of the influenza season

For more information on data definitions and sources see [Annex: Data Notes section at the end of this report](#)

## SURVEILLANCE AND HEALTH STATUS ASSESSMENT

### Public Health Surveillance

Report Date: March 15, 2011

An influenza report targeted to the general public is available at: <http://www.health.alberta.ca/health-info/influenza-evidence.html>

## SECTION 6: ZONE 5 – NORTH

[Back to first page](#)

### Summary

Overall, respiratory virus activity appears to be decreasing in North Zone.

### Laboratory Data (see [Figure 6A](#), [Figure 6B](#), [Figure 6C](#), [Table 6A](#) & [Table 6B](#))

RSV activity continues to decline in North Zone. The weekly number of influenza cases confirmed in this part of the province has also been declining steadily for the last several weeks. At this point in the season, the age specific rate for confirmed influenza among infants under the age of 2 years is much higher than the rate for any other age group (21.0 per 10,000 compared to 8.4 per 10,000 or lower). In this area of the province, 39.0% of the influenza cases confirmed have been identified as influenza A (H1N1) 2009. As a comparator, 20.3% of the influenza cases in all of Alberta have been identified as influenza A (H1N1) 2009. For each of the other individual zones, the percentages are lower than the provincial percentage.

### Outbreaks (see [Figure 6D](#))

Since the last update, there have been no new respiratory outbreaks reported in North Zone.

### Health Link Alberta Calls (see [Figure 6E](#))

The number of calls to Health Link Alberta by residents of North Zone for cough or breathing difficulties was 20% lower in Week 10 (Mar 6-12, 2011) than in the previous week.

### Emergency Department/Urgent Care Center Visits and Hospital Admissions

There are no data available for the North Zone.

## SURVEILLANCE AND HEALTH STATUS ASSESSMENT

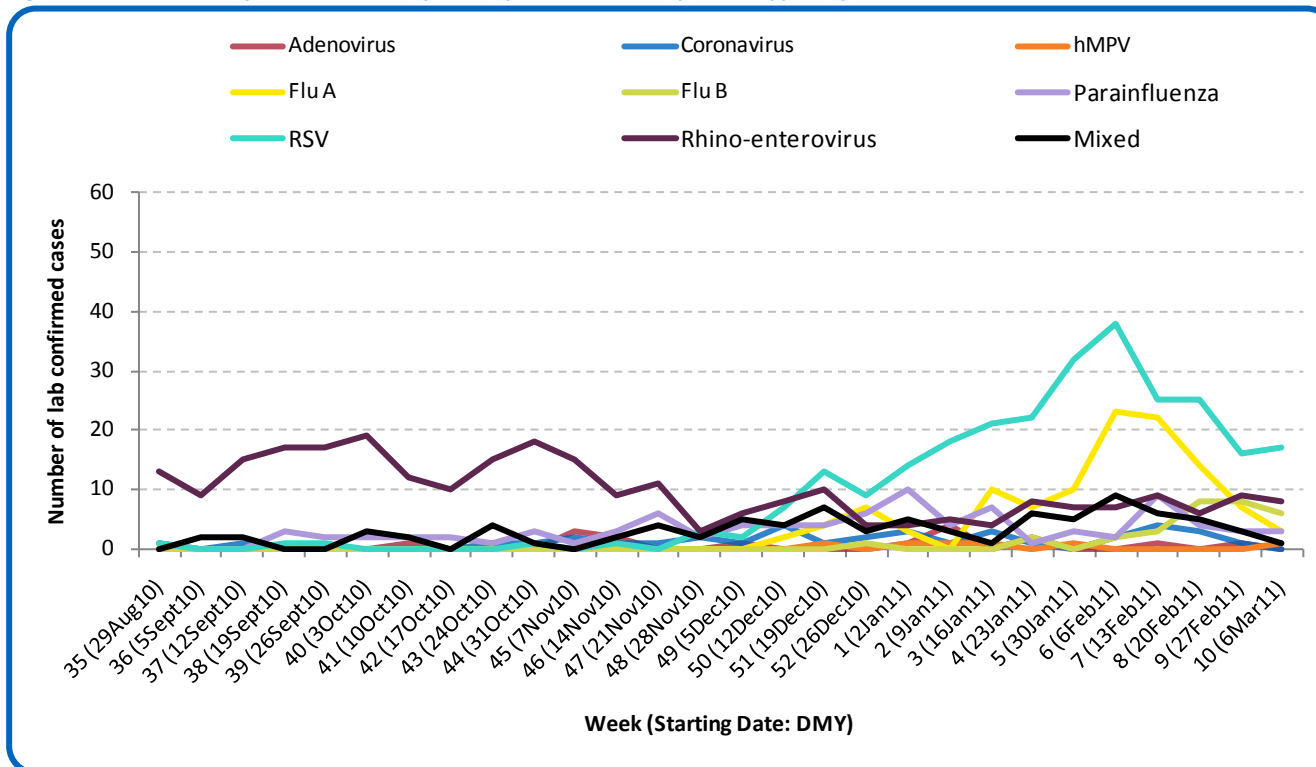
### Public Health Surveillance

Report Date: March 15, 2011

An influenza report targeted to the general public is available at: <http://www.health.alberta.ca/health-info/influenza-evidence.html>

[Back to start of section](#)

Figure 6A: Laboratory confirmed respiratory virus cases, by virus type, by week, North Zone (2010-2011)



Sources: DIAL – Provincial Laboratory and the Outbreak Response Toolkit (includes cases with positive respiratory specimens received on or before Mar 12, 2011). For more information on data definitions and sources see [Annex: Data Notes section at the end of this report](#)

SURVEILLANCE AND HEALTH STATUS ASSESSMENT

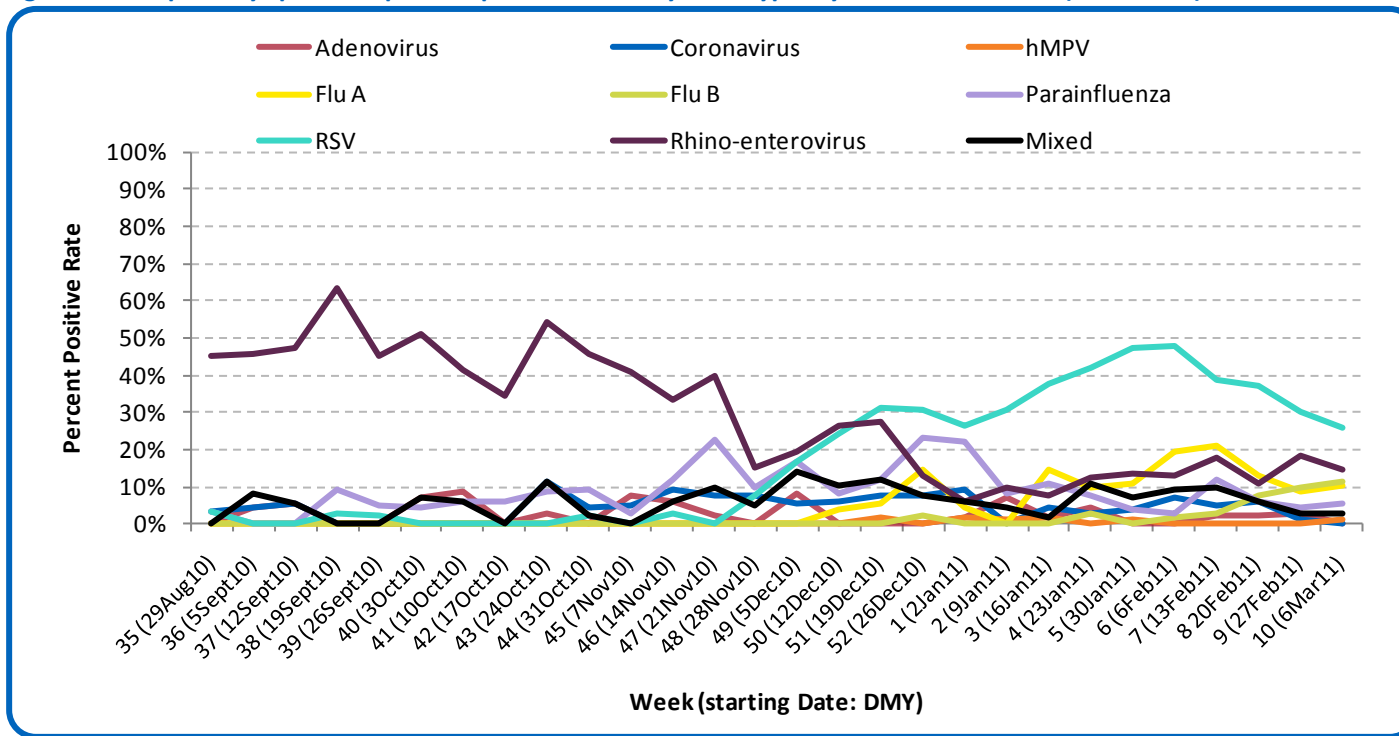
Public Health Surveillance

Report Date: March 15, 2011

An influenza report targeted to the general public is available at: <http://www.health.alberta.ca/health-info/influenza-evidence.html>

[Back to start of section](#)

Figure 6B: Respiratory specimen percent positive rates, by virus type, by week, North Zone (2010-2011)



Source: DIAL – Provincial Laboratory (includes cases with positive respiratory specimens received on or before Mar 12, 2011)  
For more information on data definitions and sources see [Annex: Data Notes section at the end of this report](#)

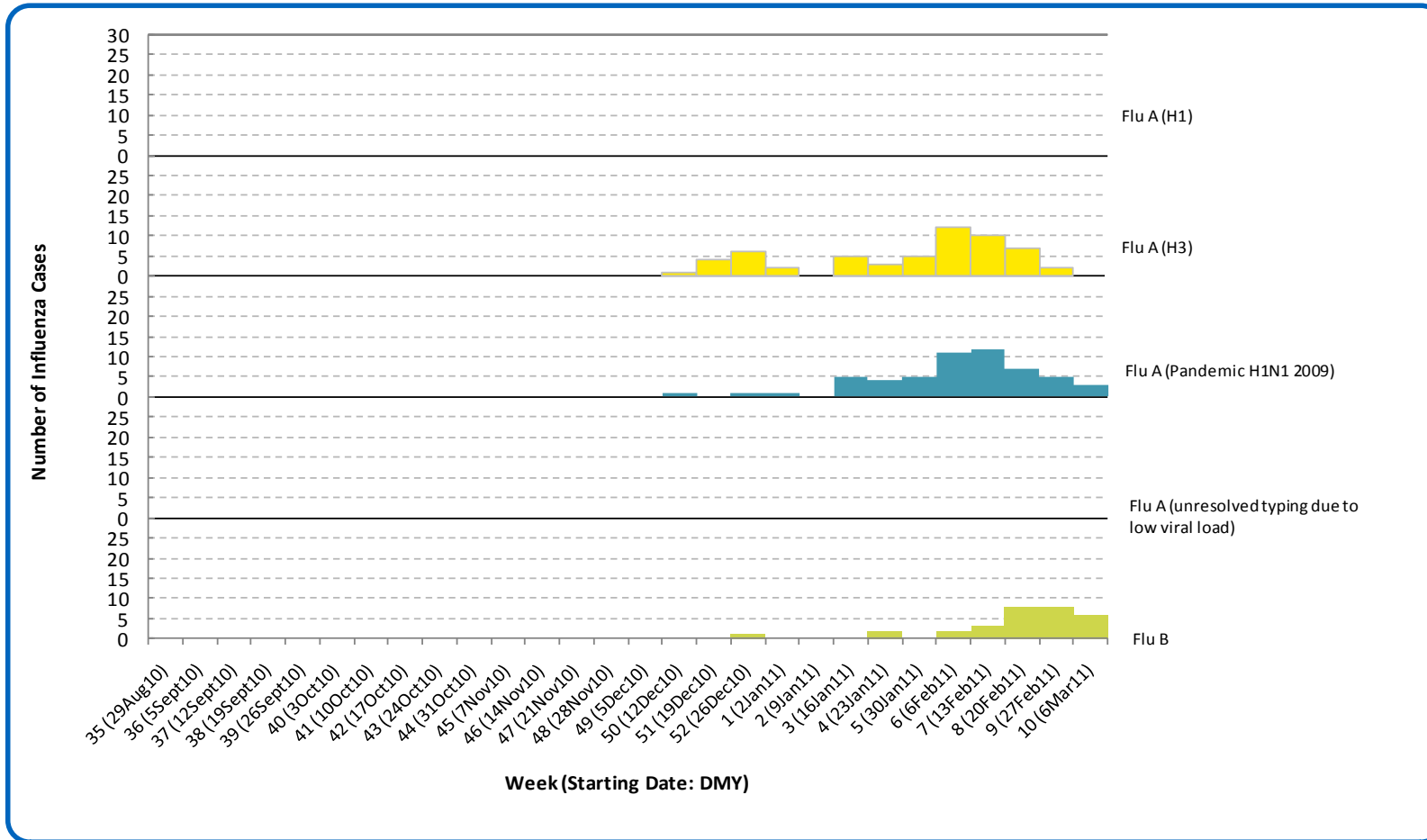
**SURVEILLANCE AND HEALTH STATUS ASSESSMENT**

**Public Health Surveillance**  
Report Date: March 15, 2011

An influenza report targeted to the general public is available at: <http://www.health.alberta.ca/health-info/influenza-evidence.html>

[Back to start of section](#)

Figure 6C: Laboratory confirmed influenza cases, by subtype, by week specimen received, North Zone (2010-2011)



\*Note: 6 specimens were positive for influenza A and one or more other virus type(s).

Source: Outbreak Response Toolkit (includes cases with positive respiratory specimens received on or before Mar 12, 2011).

For more information on data definitions and sources see [Annex: Data Notes section at the end of this report](#)

SURVEILLANCE AND HEALTH STATUS ASSESSMENT

Public Health Surveillance

Report Date: March 15, 2011

An influenza report targeted to the general public is available at: <http://www.health.alberta.ca/health-info/influenza-evidence.html>

[Back to start of section](#)

**Table 6A: New influenza cases (and age specific rates), by subtype, by age group, North Zone (Week 10: Mar 6-12, 2011)**

	Flu A (Seasonal-H1)		Flu A (Seasonal-H3)		Flu A (Pandemic H1N1 2009)		Flu A (unresolved typing due to low viral load)		Flu B		Total	
	#	Rate (per 10,000)	#	Rate (per 10,000)	#	Rate (per 10,000)	#	Rate (per 10,000)	#	Rate (per 10,000)	#	Rate (per 10,000)
0 to <2 years	0	0.0	0	0.0	0	0.0	0	0.0	1	0.7	1	0.7
2 to <5 years	0	0.0	0	0.0	0	0.0	0	0.0	0	0.0	0	0.0
5 to <9 years	0	0.0	0	0.0	0	0.0	0	0.0	3	1.3	3	1.3
9 to <18 years	0	0.0	0	0.0	0	0.0	0	0.0	0	0.0	0	0.0
18 to <65 years	0	0.0	0	0.0	3	0.1	0	0.0	2	0.1	5	0.2
65 to <75 years	0	0.0	0	0.0	0	0.0	0	0.0	0	0.0	0	0.0
75+ years	0	0.0	0	0.0	0	0.0	0	0.0	0	0.0	0	0.0
<b>Total</b>	<b>0</b>	<b>0.0</b>	<b>0</b>	<b>0.0</b>	<b>3</b>	<b>0.1</b>	<b>0</b>	<b>0.0</b>	<b>6</b>	<b>0.1</b>	<b>9</b>	<b>0.2</b>

**Table 6B: Cumulative influenza cases (and age specific rates), by subtype, by age group, North Zone (Aug 29, 2010-Mar 12, 2011)**

	Flu A (Seasonal-H1)		Flu A (Seasonal-H3)		Flu A (Pandemic H1N1 2009)		Flu A (unresolved typing due to low viral load)		Flu B		Total	
	#	Rate (per 10,000)	#	Rate (per 10,000)	#	Rate (per 10,000)	#	Rate (per 10,000)	#	Rate (per 10,000)	#	Rate (per 10,000)
0 to <2 years	0	0.0	12	8.7	12	8.7	0	0.0	5	3.6	29	21.0
2 to <5 years	0	0.0	6	3.1	4	2.1	0	0.0	5	2.6	15	7.9
5 to <9 years	0	0.0	9	3.8	5	2.1	0	0.0	6	2.5	20	8.4
9 to <18 years	0	0.0	8	1.4	9	1.6	0	0.0	4	0.7	21	3.7
18 to <65 years	0	0.0	17	0.6	25	0.9	0	0.0	10	0.4	52	1.9
65 to <75 years	0	0.0	1	0.5	0	0.0	0	0.0	0	0.0	1	0.5
75+ years	0	0.0	4	2.6	0	0.0	0	0.0	0	0.0	4	2.6
<b>Total</b>	<b>0</b>	<b>0.0</b>	<b>57</b>	<b>1.3</b>	<b>55</b>	<b>1.3</b>	<b>0</b>	<b>0.0</b>	<b>30</b>	<b>0.7</b>	<b>142</b>	<b>3.3</b>

Source for Tables 6A & 6B: Outbreak Response Toolkit (includes cases with positive respiratory specimens received on or before *Mar 12, 2011*).

Population data values used to calculate rates are for June 30, 2009 and are estimated using actual population values from the Alberta Health Care Insurance Plan (AHCIP) Registration File as of March 31, 2009.

For more information on data definitions and sources see [Annex: Data Notes section at the end of this report](#)

## SURVEILLANCE AND HEALTH STATUS ASSESSMENT

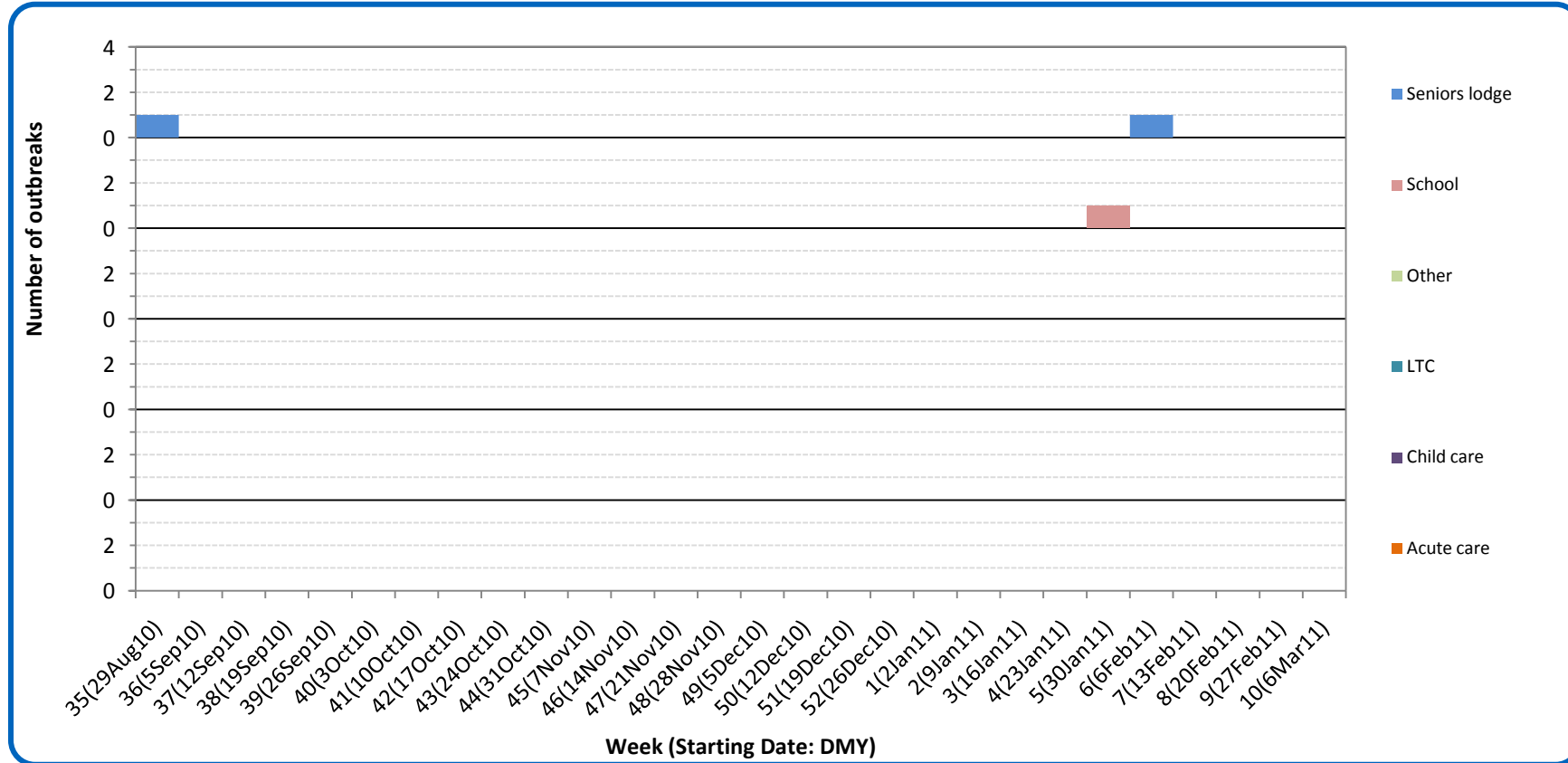
### Public Health Surveillance

Report Date: March 15, 2011

An influenza report targeted to the general public is available at: <http://www.health.alberta.ca/health-info/influenza-evidence.html>

[Back to start of section](#)

Figure 6D: Respiratory outbreaks, by facility type, by onset week, North Zone (2010-2011; school outbreaks may not have a laboratory confirmation)



Source: Alberta Outbreak Reporting Form as of 23:59 on Mar 12, 2011. LTC stands for long term care facility. For more information on data definitions and sources see [Annex: Data Notes section at the end of this report](#)

SURVEILLANCE AND HEALTH STATUS ASSESSMENT

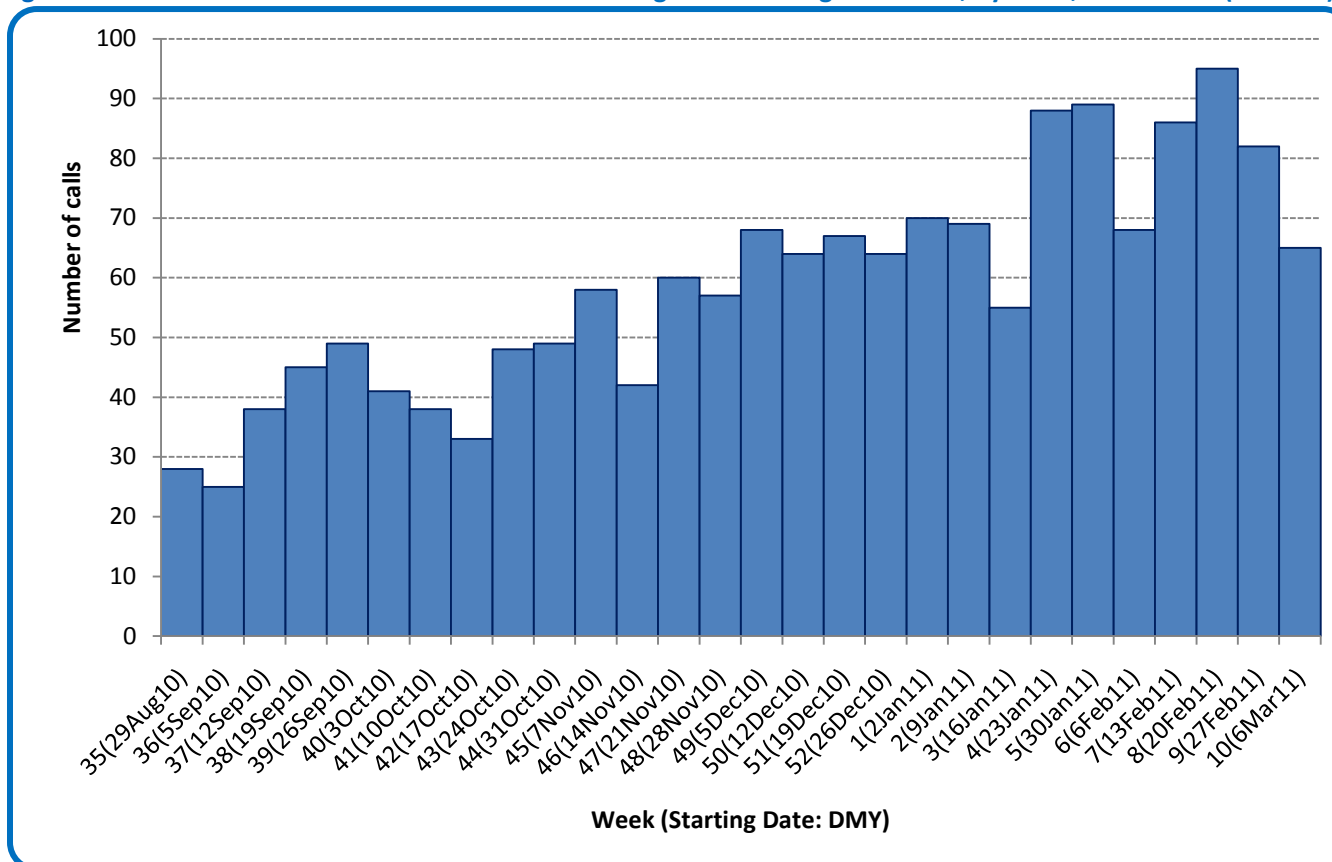
Public Health Surveillance

Report Date: March 15, 2011

An influenza report targeted to the general public is available at: <http://www.health.alberta.ca/health-info/influenza-evidence.html>

[Back to start of section](#)

Figure 6E: Number of calls to Health Link Alberta for cough or breathing difficulties, by week, North Zone (2010-11)



Source: Sharp Focus - Health Link Alberta - via Alberta Real Time Syndromic Surveillance Net (ARTSN) as of 23:59 on Mar 12, 2011. For more information on data definitions and sources see [Annex: Data Notes section at the end of this report](#)

**SURVEILLANCE AND HEALTH STATUS ASSESSMENT**

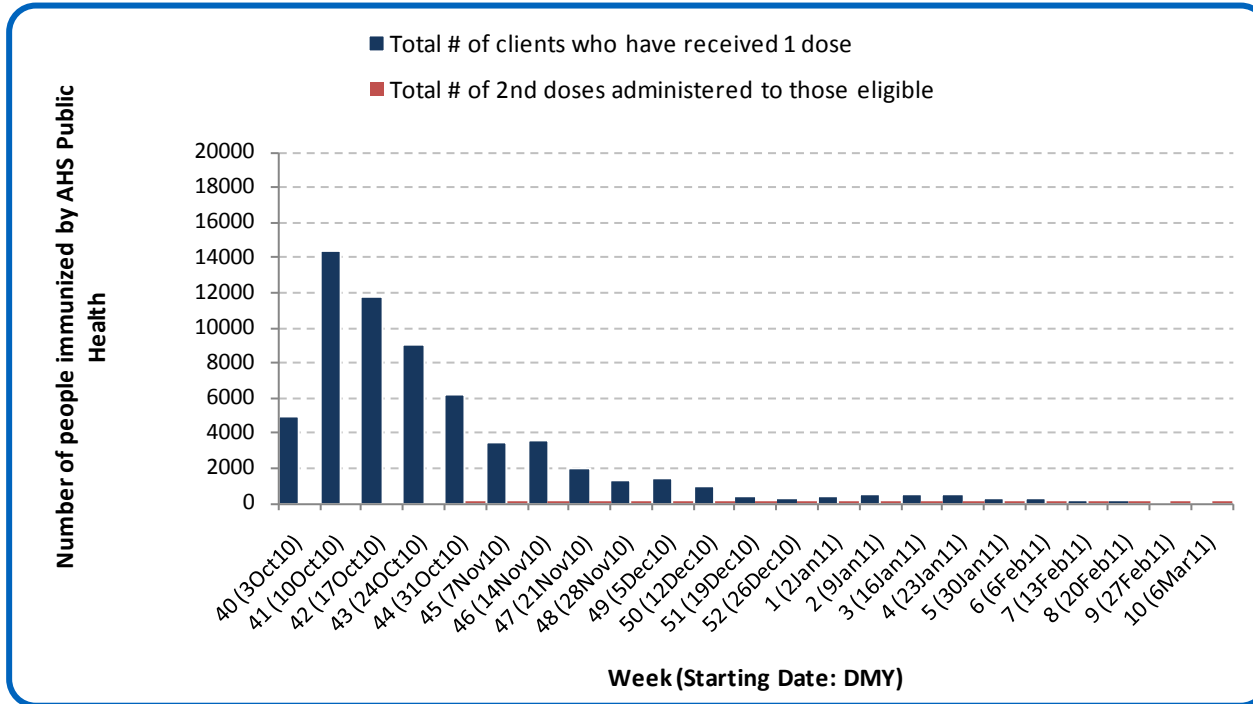
**Public Health Surveillance**

Report Date: March 15, 2011

An influenza report targeted to the general public is available at: <http://www.health.alberta.ca/health-info/influenza-evidence.html>

[Back to start of section](#)

Figure 6F: Number immunized by AHS (Public Health), by week, North Zone (2010-2011)



Source: AHS Zones (doses do not include those delivered by external providers)  
 Note: Immunization coverage rates will be reported at the end of the influenza season  
 For more information on data definitions and sources see [Annex: Data Notes section at the end of this report](#)

**SURVEILLANCE AND HEALTH STATUS ASSESSMENT**

**Public Health Surveillance**

Report Date: March 15, 2011

An influenza report targeted to the general public is available at: <http://www.health.alberta.ca/health-info/influenza-evidence.html>

[Back to start of section](#)

**Table 6C: AHS (Public Health) delivered influenza immunizations (with cumulative totals), by priority group, North Zone (2010-2011)**

Priority Group	# Immunized (Week 10 – Mar6-12, 2011)	Cumulative Number Immunized (since Oct 3, 2010)
Long term care staff	0	814
Health care workers	4	4,690
Pregnant women	1	569
Residents of long term care	0	1,248
65 years of age and over	7	15,796
All children 6 months up to and including 23 months*	Dose #1	21
	Dose #2	29
All children 24 months up to and including 59 months*	Dose #1	6
	Dose #2	3
High risk: 5 years up to and including 8 years*	Dose #1	7
	Dose #2	0
High risk: 9 years up to and including 64 years	18	7,828
Healthy: 5 years up to and including 8 years*	Dose #1	2
	Dose #2	0
Healthy: 9 years up to and including 64 years	47	23,472
<b>Total number of clients who have received 1 dose</b>	<b>113</b>	<b>62,762</b>
<b>Total number of 2nd doses administered to those eligible*</b>	<b>32</b>	<b>1,060</b>

Source: AHS Zones (doses do not include those delivered by external providers)

\*Children under 9 years of age who have not received at least one dose of seasonal influenza vaccine in past years require two doses, given at least four weeks apart.

Note: Immunization coverage rates will be reported at the end of the influenza season

For more information on data definitions and sources see [Annex: Data Notes section at the end of this report](#)

## SURVEILLANCE AND HEALTH STATUS ASSESSMENT

### Public Health Surveillance

Report Date: March 15, 2011

An influenza report targeted to the general public is available at: <http://www.health.alberta.ca/health-info/influenza-evidence.html>

[Back to start of section](#)

**Table 6D: Influenza immunizations delivered by external partners, by priority group, North Zone (Oct 3-Dec 31, 2010)**

Priority Group	# Immunized Oct 3-Dec 31, 2010	
Long term care staff	9	
Health care workers	153	
Pregnant women	4	
Residents of long term care	0	
65 years of age and over	333	
All children 6 months up to and including 23 months*	Dose #1	0
	Dose #2**	0
All children 24 months up to and including 59 months*	Dose #1	1
	Dose #2**	0
High risk: 5 years up to and including 8 years*	Dose #1	0
	Dose #2**	0
High risk: 9 years up to and including 64 years	633	
Healthy: 5 years up to and including 8 years*	Dose #1	2
	Dose #2**	0
Healthy: 9 years up to and including 64 years	3,940	
<b>Total number of clients who have received 1 dose</b>	<b>5,075</b>	
Total number of 2nd doses administered to those eligible*	0	

Source: AHS Zones (zones are required to report doses of seasonal influenza vaccine administered by community and other providers (e.g. physicians, pharmacists, LTC, WHS/OHS programs) twice during the influenza season. These numbers are from the first report (for doses delivered from Oct 3 to Dec 31, 2010). The remaining doses will be reported at a later date.

\*Children under 9 years of age who have not received at least one dose of seasonal influenza vaccine in past years require two doses, given at least four weeks apart.

\*\*In some cases, it was not possible to separate dose 1's from dose 2's. Therefore, dose 1 category may contain some 2<sup>nd</sup> doses.

Note: Immunization coverage rates will be reported at the end of the influenza season

For more information on data definitions and sources see [Annex: Data Notes section at the end of this report](#)

## SURVEILLANCE AND HEALTH STATUS ASSESSMENT

### Public Health Surveillance

Report Date: March 15, 2011

An influenza report targeted to the general public is available at: <http://www.health.alberta.ca/health-info/influenza-evidence.html>

## ANNEX: DATA NOTES

[Back to first page](#)

### LABORATORY

Information on laboratory confirmed respiratory virus activity in Alberta is based on data from 2 sources:

- 1) Non-influenza viruses: The Alberta Provincial Public Health Laboratory DIAL system (Data Integration for Alberta Laboratories) – a specimen based system. Cases are determined by rationalizing samples from the same patient with the same virus identified within a 30-day period. The information (i.e. received date) from the first sample identifying the identical virus is used in this report.
- 2) Influenza viruses: The Alberta influenza Case Management System – an influenza case based system.

Both data sources are web-based applications supported by the Canadian Network for Public Health Intelligence.

The data in this report are based on specimens obtained from residents of Alberta; according to the date the specimen was received by the laboratory.

Definition for “mixed” – a single sample where multiple viral organisms were isolated.

### INFLUENZA-LIKE ILLNESS

Four data sources are used to provide information on utilization of primary and acute care services by people with Influenza-Like Illness (ILI). *Caution: Each source uses potentially different definitions of ILI.*

1. Primary care summaries are obtained from the TARRANT system. Patients seen by TARRANT physicians may not be representative of the general population. Reported ILI cases represent people seen by TARRANT physicians, according to the date seen by the physician. The percentage of ILI represents the proportion of patients with ILI of all patients seen by the physician.
2. In addition to reporting visits of patients with ILI, TARRANT physicians also report visits with lower respiratory tract infections (LRTI). Each visit is recorded only once, even if a patient has symptoms consistent with ILI and LRTI. The combined ILI- and LRTI-related visits are therefore suggestive of overall respiratory infections in the patient population.
3. Information on visits for ILI in Emergency Departments (ED) and urgent care centers are provided by the Alberta Real Time Syndromic Surveillance Net (ARTSSN) data repository. ILI designation is based on patients being screened in emergency departments with an ILI screening tool. The primary purpose of the ILI screening tool is to implement appropriate infection control measures. The original data sources fed to the ARTSSN data repository are EDIS (Emergency Department Information System) for the Edmonton Zone and REDIS for the Calgary Zone.
4. Health Link Alberta is a 24 hour a day, 7 day a week nurse telephone advice and health information service that provides the public with advice and information about health symptoms and concerns. The original data source for the daily calls to Health Link Alberta for ILI, cough, and breathing difficulties is the Health Link database called Sharp Focus.

## SURVEILLANCE AND HEALTH STATUS ASSESSMENT

### Public Health Surveillance

Report Date: March 15, 2011

An influenza report targeted to the general public is available at: <http://www.health.alberta.ca/health-info/influenza-evidence.html>

## OUTBREAKS

[Back to first page](#)

Upon notification of an outbreak, the *Alberta Health & Wellness/Alberta Health Services* Outbreak Reporting Form (Fillable PDF) is completed by Zone Public Health investigators and sent to *Alberta Health & Wellness and AHS Public Health Surveillance*. The form includes information about the type and location of the outbreak, type of facility, and the causative organism (confirmed or suspected). There may be a delay between the reporting of an outbreak and the identification of the organism. This report includes only those outbreaks that are laboratory confirmed and caused by influenza-like illness viruses; outbreaks that are caused by bacteria (i.e. pertussis, invasive pneumococcal disease) and other types of viruses (i.e. measles, rubella (German measles), chickenpox) are excluded. Also excluded are those outbreaks that have no causative agent identified by the Provincial Laboratory for Public Health or where specimens are not tested or an outbreak with only one infected (confirmed or probable) case during a 7 day period. This follows the same approach of PHAC FluWatch for defining ILI/influenza outbreak. The naming convention of outbreak facilities by FluWatch - "Hospital and residential institutions" - is also adopted. Outbreaks in schools are officially counted in tables or graphs whether there is or not a laboratory confirmation; outbreaks in hospital and residential institutions that are pending for laboratory confirmation are described for information only but not officially presented in graphs or tables in this report.

## INFLUENZA IMMUNIZATIONS

Influenza immunization data are reported by AHS zones. Numbers are available to the Public Health Surveillance team at the beginning of the week for the doses administered the previous week (Sunday to Saturday). It includes those doses administered by AHS (Public Health) only. Clients can only exist in one priority group. Immunization coverage rates will be reported at the end of March, 2011.

## POPULATION NUMBERS

Population data values used to calculate rates are for June 30, 2009 and are estimated using actual population values from the Alberta Health Care Insurance Plan (AHCIP) Registration File as of March 31, 2009. The following registrants are included: residents of Alberta; 'residents' of Alberta temporarily living elsewhere, such as extended visits or vacations or students attending an educational institute outside of Alberta, or Albertans temporarily (up to four years) working outside Alberta; persons during the first three months after they move from Alberta to another Canadian province; dependants of members of the RCMP and Armed Forces; persons from another country who are working or studying in Alberta on valid visas; and Natives/Aboriginals whose premiums are paid by Health Canada, First Nations and Inuit Health Branch. Not included are: members of the Armed Forces and RCMP; inmates at federal penitentiaries; persons from other provinces during their first three months in Alberta; and persons who have not registered for eligibility, or have opted out.

Slight differences between values provided at this level of aggregation and data provided at other levels of aggregation may occur because of round-off error. Population values are subject to change without notice when new source data is received.

## SURVEILLANCE AND HEALTH STATUS ASSESSMENT

### Public Health Surveillance

Report Date: March 15, 2011

An influenza report targeted to the general public is available at: <http://www.health.alberta.ca/health-info/influenza-evidence.html>