

Weekly Report

May 17th, 2011

The purpose of this report is to inform Public Health staff, primary care providers, acute care staff and other community practitioners about recent respiratory virus activity in the province of Alberta. Unless otherwise noted, all data presented are current as of the Saturday prior to the day the report is released.

To navigate to certain sections of the report or to visit other relevant websites, use the [Quick Links below](#)

[Alberta Snapshot](#)

[Section 1: Alberta](#)

[Section 2: Zone 1 - South](#)

[Section 3: Zone 2 - Calgary](#)

[Section 4: Zone 3 - Central](#)

[Section 5: Zone 4 - Edmonton](#)

[Section 6: Zone 5 - North](#)

[Annex: Data Notes](#)

[Current Global Information](#)

[FluWatch \(PHAC\)](#)

[FluView \(US CDC\)](#)

[HPA \(UK\)](#)

[WHO](#)

[Travel Advisories](#)

What's New?

- According to the most recent international and global influenza activity reports, influenza activity is currently low. In the Northern hemisphere, influenza activity is generally at pre-season levels, where influenza type B is currently more commonly detected than influenza A viruses. Activity in the tropical areas of the world is low as well, with the exception of some influenza A and B transmission occurring in sub-Saharan Africa. Nearly all influenza A viruses and more than 90% of the influenza B viruses detected are antigenically similar to those included in the current trivalent seasonal influenza vaccine.
- The influenza season has not started in the Southern hemisphere.
- Influenza activity continues to decrease in the United States and Canada, although localized activity persists in areas of Nova Scotia and Newfoundland. Of note, the proportion of positive tests for parainfluenza viruses is increasing in many regions of Canada.
- In Alberta, influenza activity continues to decline as well. Rhino-enterovirus is currently the predominant respiratory virus circulating. Of note, all indicators of respiratory virus activity decreased in Week 19 (May 8-14, 2011) compared to the previous week, except for the number of hospital admissions for cough in both the City of Calgary and in Edmonton Zone which increased by 25% and 38%, respectively. As of the end of last week (May 14, 2011), the total number of influenza cases confirmed in the province this season is 1494, of which 36.3% have been identified as influenza A (H3), 16.6% as influenza A (H1N1) 2009, 45.3% as influenza type B, and 1.8% influenza A with unresolved sub-typing.
- One recent respiratory outbreak, mentioned a previous update, has now been confirmed in Alberta. It occurred in a Central Zone long term care facility and was attributed to influenza A (H3). The final attack rate was calculated as 30%. The onset of symptoms occurred in Week 14 (Apr 3-9, 2011). Please note, one confirmed influenza A (H3) outbreak included in last week's update was erroneously reported to have a final attack rate of 16%. This was actually only a preliminary attack rate. The final attack rate was calculated as 45%. No new respiratory outbreaks have been reported.

If you have questions about the Alberta Respiratory Virus Surveillance Update, or any of the indicators, please contact: AHSPublicHealthSurveillance@albertahealthservices.ca Or phone: 780-342-0210

Alberta Snapshot

[Back to first page](#)

Indicators		Cumulative Counts					Alberta	
		Week 35 (starting Aug 29/10) to Week 19 (starting May 8/11)						
		South	Calgary	Central	Edmonton	North		
Laboratory Confirmed Cases	Number of cases with a positive respiratory specimen ¹	Adenovirus	10	47	14	91	18	180
		Coronavirus	13	75	43	126	47	304
		Human metapneumovirus (hMPV)	9	21	5	29	10	74
		Influenza A	49	205	131	272	160	817
		Influenza B	93	175	73	204	132	677
		Parainfluenza	36	123	70	259	114	602
		Respiratory syncytial virus (RSV)	123	483	213	788	337	1944
		Rhino enterovirus	125	563	229	787	385	2089
		Mixed	39	173	57	181	104	554
		Total	497	1865	835	2737	1307	7241
Outbreaks	# laboratory confirmed respiratory outbreaks ²	0	23	19	38	7	87	
Influenza Immunizations	Total number of clients who have received 1 dose administered by AHS Public Health ³ (cumulative since Oct 3, 2010)	43,455	194,360	61,966	162,590	63,175	525,546	
	The reported number of people who have received 1 dose administered by external providers (Oct 3-Mar 31, 2011) ⁴	18,888	138,267	18,813	98,848	6,312	281,128	

-- Information not available

*Note: 28 specimens were positive for influenza A or B and one or more other virus type(s). These cases have been included in the influenza counts, as well as the other respective specimen type(s). They have not been included in the 'Mixed' category. Five specimens were positive for both influenza A & B.

¹ Sources: DIAL – Provincial Laboratory and the Outbreak Response Toolkit (includes cases with positive respiratory specimens received on or before May 14, 2011).

² Source: Alberta Health and Wellness Outbreak Reporting Form (Fillable PDF) from All Zones.

³ Source: AHS Zones (number does not include doses provided by external providers); includes first doses only for those that require two doses

⁴ In some cases, it was not possible to separate dose 1's from dose 2's.

For more information on data definitions and sources see [Annex: Data Notes section at the end of this report](#)

SURVEILLANCE AND HEALTH STATUS ASSESSMENT

Public Health Surveillance

Report Date: May 17, 2011

An influenza report targeted to the general public is available at: <http://www.health.alberta.ca/health-info/influenza-evidence.html>

SECTION 1: ALBERTA

[Back to first page](#)

Summary

Although transmission of rhino-enterovirus continues, respiratory virus activity (including influenza) is generally declining in Alberta.

Laboratory Data (see [Figure 1A](#), [Figure 1B](#) & [Figure 1C](#), [Table 1A](#) & [Table 1B](#))

The number of Influenza cases confirmed in the province in Week 19 (May 8-14, 2011) decreased compared to the number confirmed the previous week. Rhino-enterovirus is currently the predominant virus circulating. As of the end of last week (May 14, 2011), the total number of confirmed cases of influenza in the province this season is 1494 (36.3% influenza A (H3), 16.6% influenza A (H1N1) 2009, 45.3% influenza type B, and 1.8% influenza A with unresolved sub-typing). At this point in the season, the age specific rate for confirmed influenza cases (all types) in infants 0 to <2 years of age is higher than the rate in other age groups, at 21.0 per 10,000 compared to 9.7 per 10,000 or lower for all other age groups.

Outbreaks (see [Figure 1D](#))

One new respiratory outbreak, mentioned in a previous update, has now been confirmed. It was an influenza A (H3) outbreak in a Central Zone long term care facility with an attack rate of 30%. The onset of symptoms occurred in Week 14 (Apr 3-9, 2011). Please note, one confirmed influenza A (H3) outbreak included in last week's update was erroneously reported to have a final attack rate of 16%. This was actually only a preliminary attack rate. The final attack rate was calculated as 45%.

No new outbreaks have been reported in Alberta since the last update.

Health Link Alberta Calls (see [Figure 1E](#))

The number of calls to Health Link Alberta for cough or breathing difficulties continues to decline.

Emergency Department/Urgent Care Center Visits and Hospital Admissions

The number of visits to emergency departments/urgent care centers (ED's) and hospital admissions for influenza-like illness (ILI) in the City of Calgary and Edmonton Zone decreased by 21% and 35%, respectively, in Week 19 (May 8-14, 2011) from the previous week. Generally, both of these indicators have been declining over the last several weeks.

The number of emergency department visits for cough decreased by 29% in Week 19 (May 8-14, 2011) from the previous week, while the number of hospital admissions for the same reason increased by 30%. Generally, the number of emergency department visits for cough has been declining over the last several weeks, while the trend for hospital admissions appears to be fluctuating.

Sentinel Physician Office Visits

The combined percentage of ILI- and LRTI-related visits of all visits to sentinel physician offices in Alberta decreased by 35% in Week 18 (May 1-7, 2011) compared to the previous week. This indicator has been decreasing for the past three weeks.

SURVEILLANCE AND HEALTH STATUS ASSESSMENT

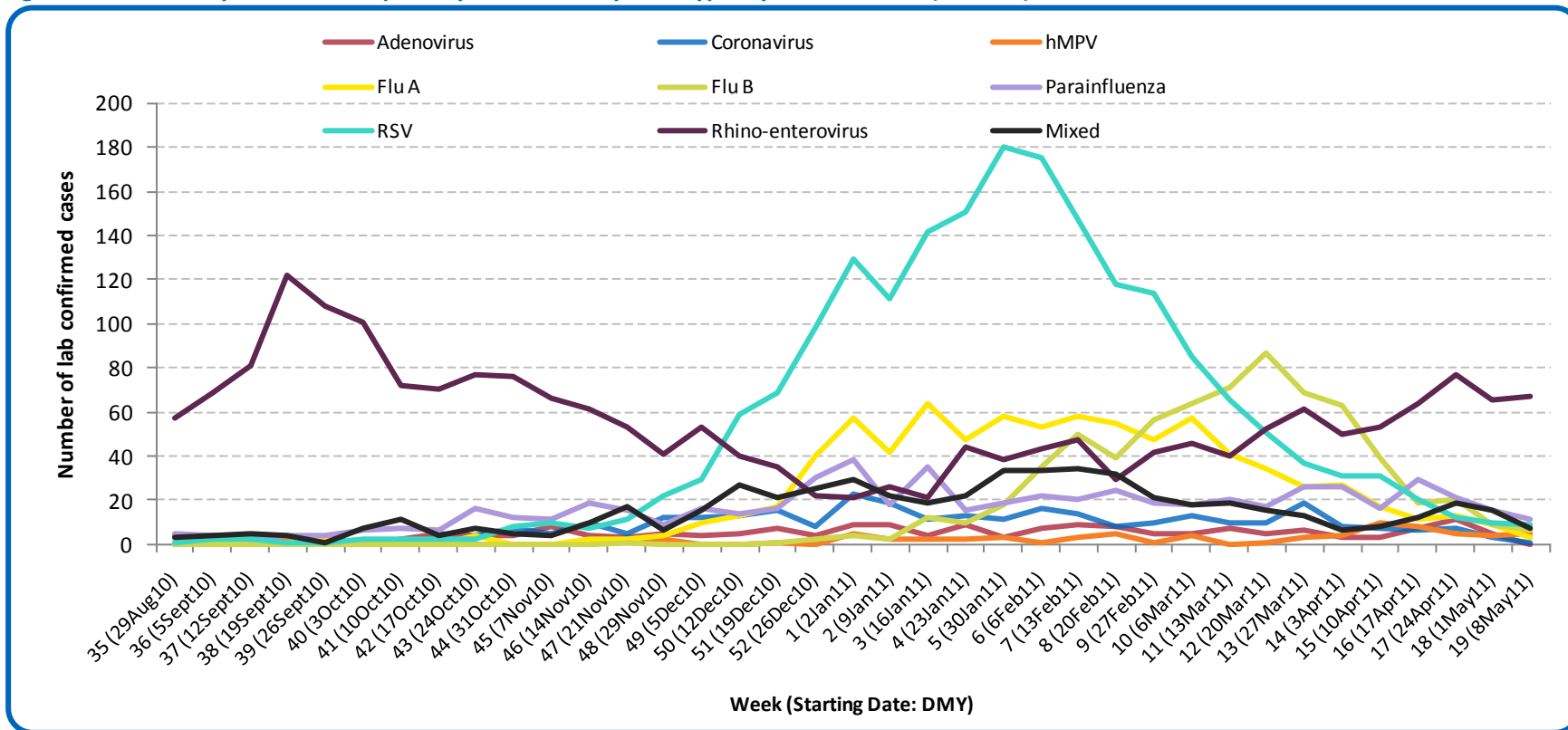
Public Health Surveillance

Report Date: May 17, 2011

An influenza report targeted to the general public is available at: <http://www.health.alberta.ca/health-info/influenza-evidence.html>

[Back to start of section](#)

Figure 1A: Laboratory confirmed respiratory virus cases, by virus type, by week, Alberta (2010-11)



Sources: DIAL – Provincial Laboratory and the Outbreak Response Toolkit (includes cases with positive respiratory specimens received on or before May 14, 2011). For more information on data definitions and sources see [Annex: Data Notes section at the end of this report](#)

SURVEILLANCE AND HEALTH STATUS ASSESSMENT

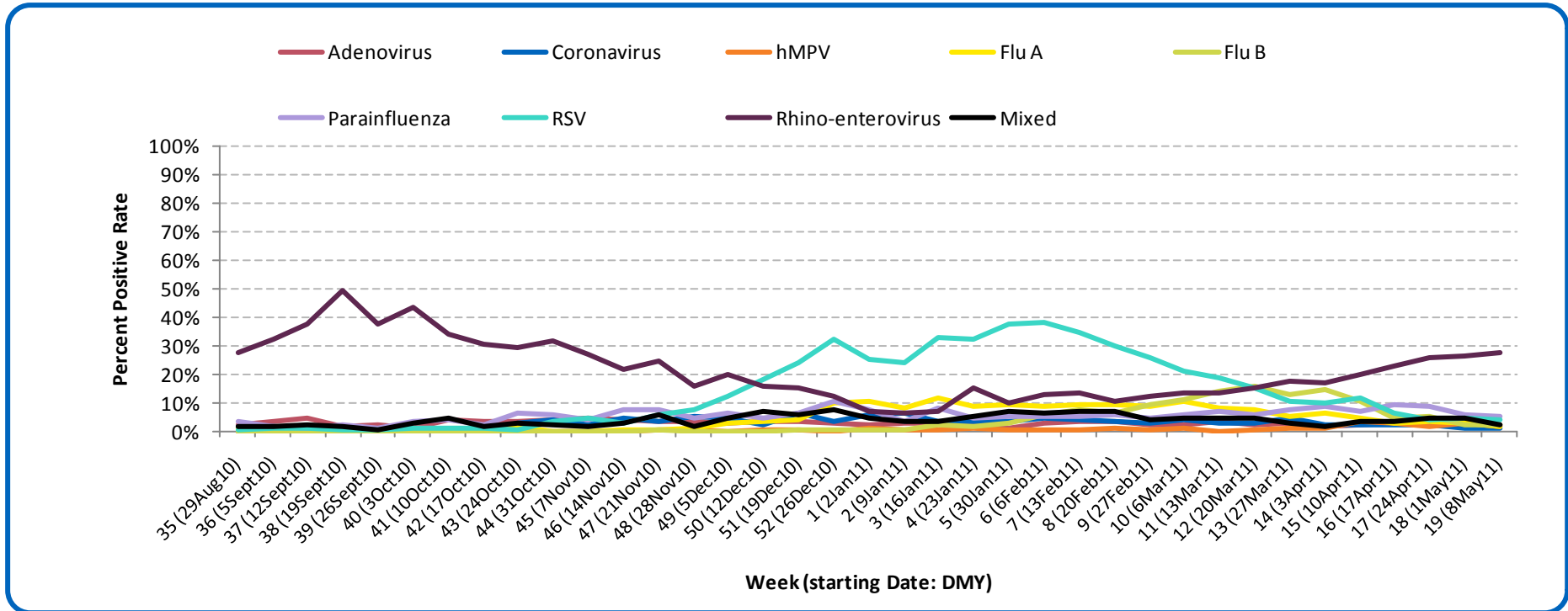
Public Health Surveillance

Report Date: May 17, 2011

An influenza report targeted to the general public is available at: <http://www.health.alberta.ca/health-info/influenza-evidence.html>

[Back to start of section](#)

Figure 1B: Respiratory specimen percent positive rates, by virus type, by week, Alberta (2010-11)



Sources: DIAL – Provincial Laboratory (includes cases with positive respiratory specimens received on or before May 14, 2011).

For more information on data definitions and sources see [Annex: Data Notes section at the end of this report](#)

[Back to start of section](#)

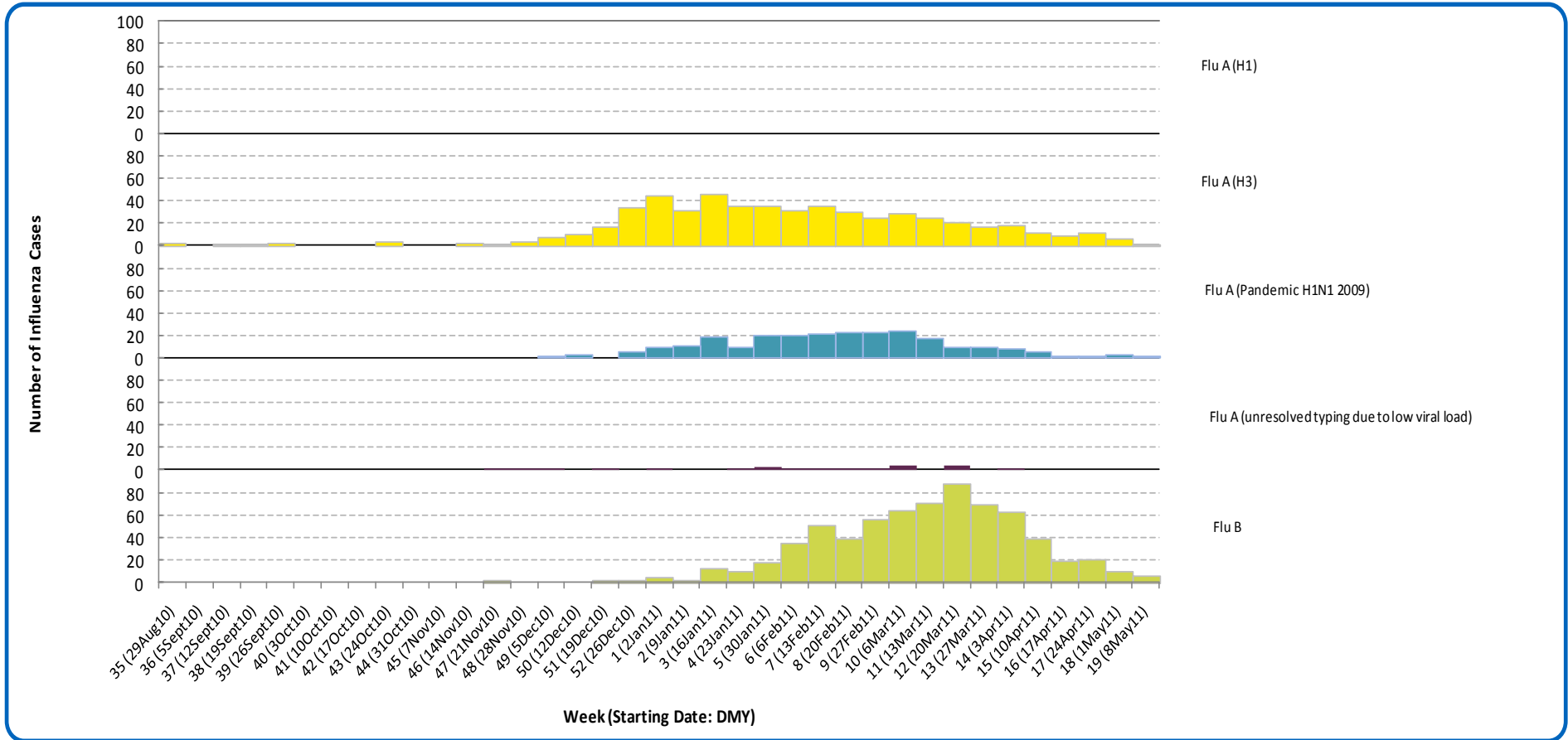
SURVEILLANCE AND HEALTH STATUS ASSESSMENT

Public Health Surveillance

Report Date: May 17, 2011

An influenza report targeted to the general public is available at: <http://www.health.alberta.ca/health-info/influenza-evidence.html>

Figure 1C: Laboratory confirmed Influenza cases, by subtype, by week specimen received, Alberta (2010-2011)



*Note: 28 specimens were positive for influenza A or B and one or more other virus type(s). Five specimens were positive for both influenza A & B. Source: Outbreak Response Toolkit (includes cases with positive respiratory specimens received on or before May 14, 2011). For more information on data definitions and sources see [Annex: Data Notes section at the end of this report](#)

[Back to start of section](#)

Table 1A: New influenza cases (and age specific rates), by subtype, by age group, Alberta (Week 19: May 8-14, 2011)

	Flu A (Seasonal-H1)		Flu A (Seasonal-H3)		Flu A (Pandemic H1N1 2009)		Flu A (unresolved typing due to low viral load)		Flu B		Total	
	#	Rate (per 10,000)	#	Rate (per 10,000)	#	Rate (per 10,000)	#	Rate (per 10,000)	#	Rate (per 10,000)	#	Rate (per 10,000)
0 to <2 years	0	0.0	0	0.0	1	0.1	0	0.0	2	0.2	3	0.3
2 to <5 years	0	0.0	1	0.1	0	0.0	0	0.0	2	0.1	3	0.2
5 to <9 years	0	0.0	0	0.0	0	0.0	0	0.0	1	0.1	1	0.1
9 to <18 years	0	0.0	0	0.0	0	0.0	0	0.0	1	<0.1	1	<0.1
18 to <65 years	0	0.0	0	0.0	1	<0.1	0	0.0	0	0.0	1	<0.1
65 to <75 years	0	0.0	0	0.0	0	0.0	0	0.0	0	0.0	0	0.0
75+ years	0	0.0	0	0.0	0	0.0	0	0.0	0	0.0	0	0.0
Total	0	0.0	1	<0.1	2	<0.1	0	0.0	6	<0.1	9	<0.1

Table 1B: Cumulative influenza cases (and age specific rates), by subtype, by age group, Alberta (Aug 29, 2010 – May 14, 2011)

	Flu A (Seasonal-H1)		Flu A (Seasonal-H3)		Flu A (Pandemic H1N1 2009)		Flu A (unresolved typing due to low viral load)		Flu B		Total	
	#	Rate (per 10,000)	#	Rate (per 10,000)	#	Rate (per 10,000)	#	Rate (per 10,000)	#	Rate (per 10,000)	#	Rate (per 10,000)
0 to <2 years	0	0.0	81	7.8	33	3.2	5	0.5	98	9.5	217	21.0
2 to <5 years	0	0.0	45	3.0	16	1.1	2	0.1	81	5.5	144	9.7
5 to <9 years	0	0.0	37	2.1	10	0.6	2	0.1	96	5.3	145	8.1
9 to <18 years	0	0.0	31	0.7	18	0.4	3	0.1	136	3.3	188	4.5
18 to <65 years	0	0.0	218	0.9	167	0.7	12	0.0	221	0.9	618	2.5
65 to <75 years	0	0.0	24	1.1	3	0.1	0	0.0	26	1.2	53	2.4
75+ years	0	0.0	106	5.8	1	0.1	3	0.2	19	1.0	129	7.0
Total	0	0.0	542	1.5	248	0.7	27	0.1	677	1.8	1494	4.0

Source for Table 1A & 1B: Outbreak Response Toolkit (includes cases with positive respiratory specimens received on or before *May 14, 2011*).

Population data values used to calculate rates are for June 30, 2009 and are estimated using actual population values from the Alberta Health Care Insurance Plan (AHCIP) Registration File as of March 31, 2009.

For more information on data definitions and sources see [Annex: Data Notes section at the end of this report](#)

SURVEILLANCE AND HEALTH STATUS ASSESSMENT

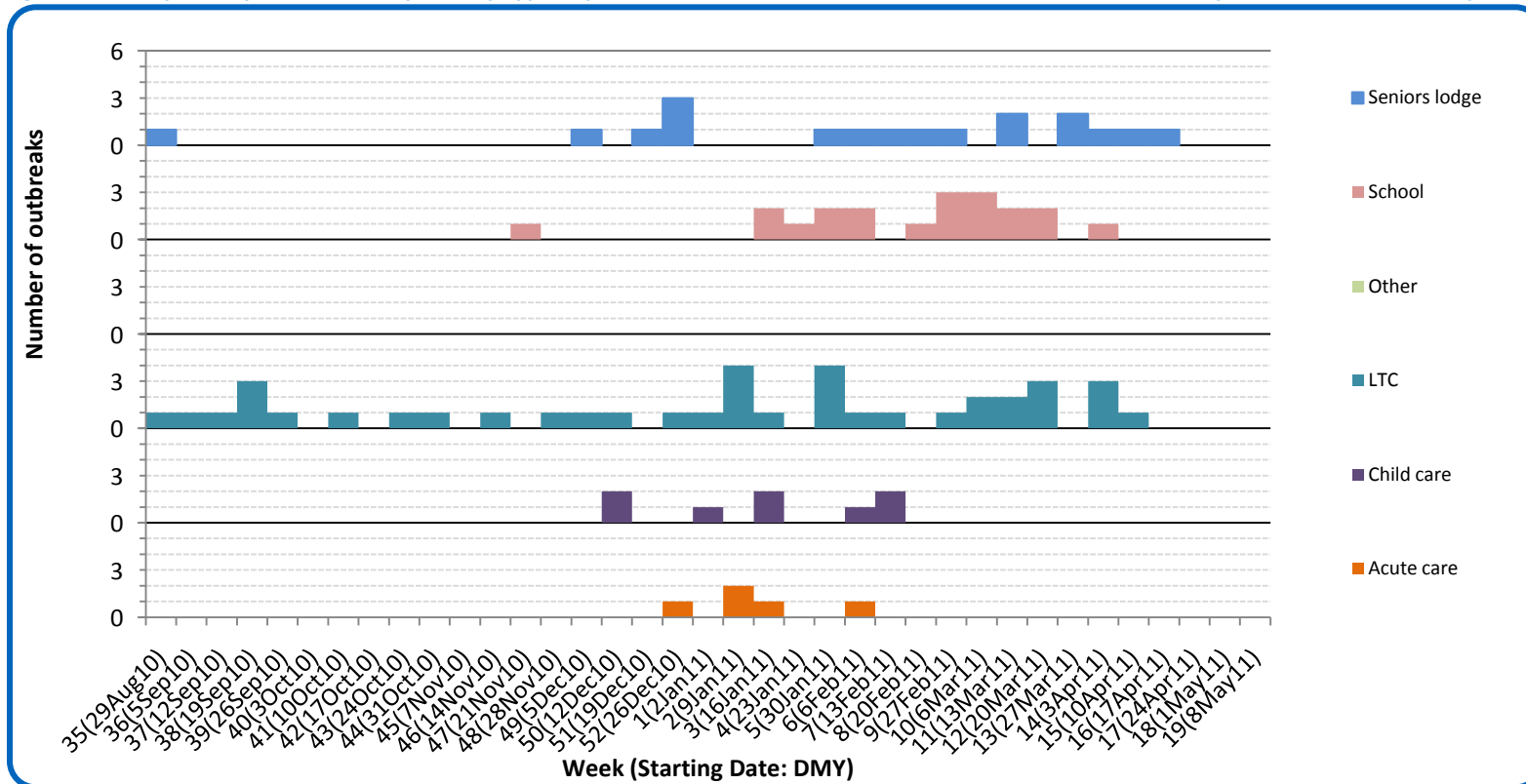
Public Health Surveillance

Report Date: May 17, 2011

An influenza report targeted to the general public is available at: <http://www.health.alberta.ca/health-info/influenza-evidence.html>

[Back to start of section](#)

Figure 1D: Respiratory outbreaks, by facility type, by onset week, Alberta (2010-2011; school outbreaks may not have a laboratory confirmation)



Source: Alberta Outbreak Reporting Form as of 23:59 on May 14, 2011. LTC stands for long term care facility. For more information on data definitions and sources see [Annex: Data Notes section at the end of this report](#)

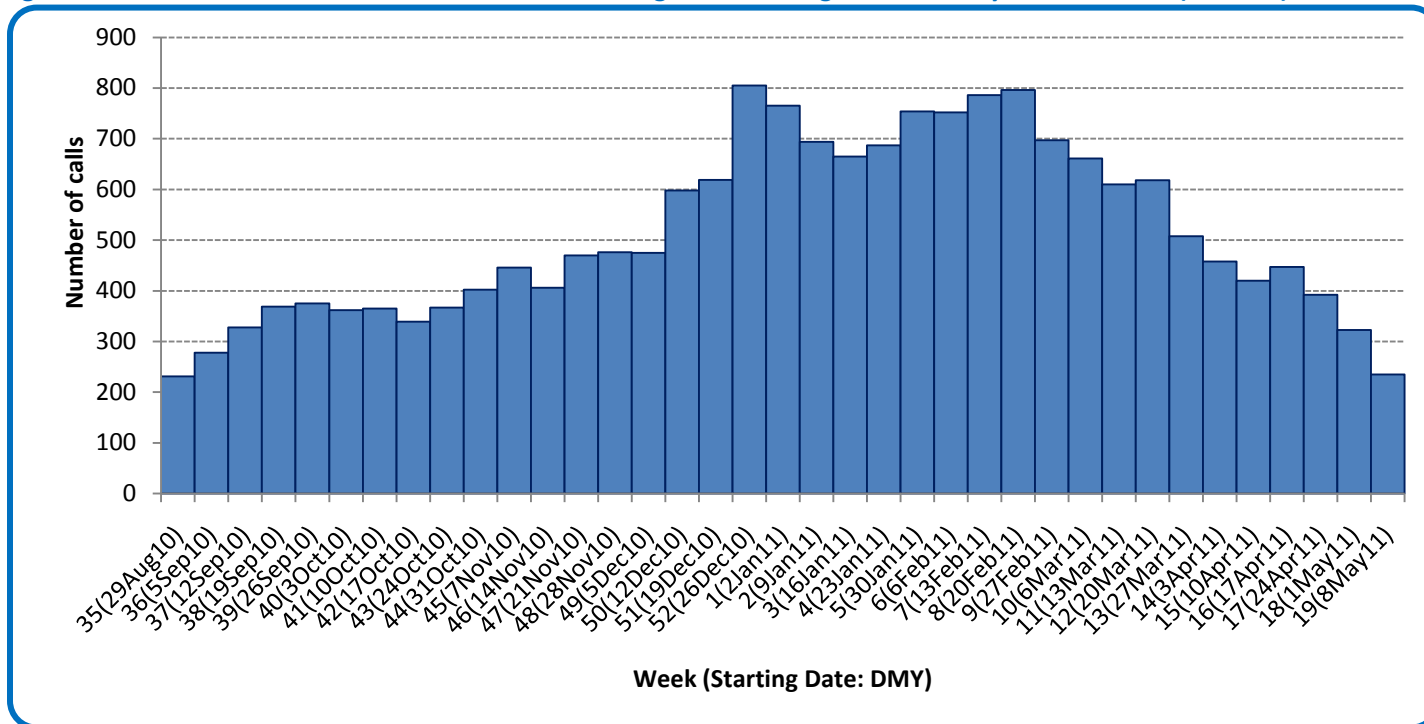
SURVEILLANCE AND HEALTH STATUS ASSESSMENT

Public Health Surveillance
Report Date: May 17, 2011

An influenza report targeted to the general public is available at: <http://www.health.alberta.ca/health-info/influenza-evidence.html>

[Back to start of section](#)

Figure 1E: Number of calls to Health Link Alberta for cough or breathing difficulties, by week, Alberta (2010-11)



Source: Sharp Focus - Health Link Alberta - via Alberta Real Time Syndromic Surveillance Net (ARTSSN) as of 23:59 on May 14, 2011. For more information on data definitions and sources see [Annex: Data Notes section at the end of this report](#)

SURVEILLANCE AND HEALTH STATUS ASSESSMENT

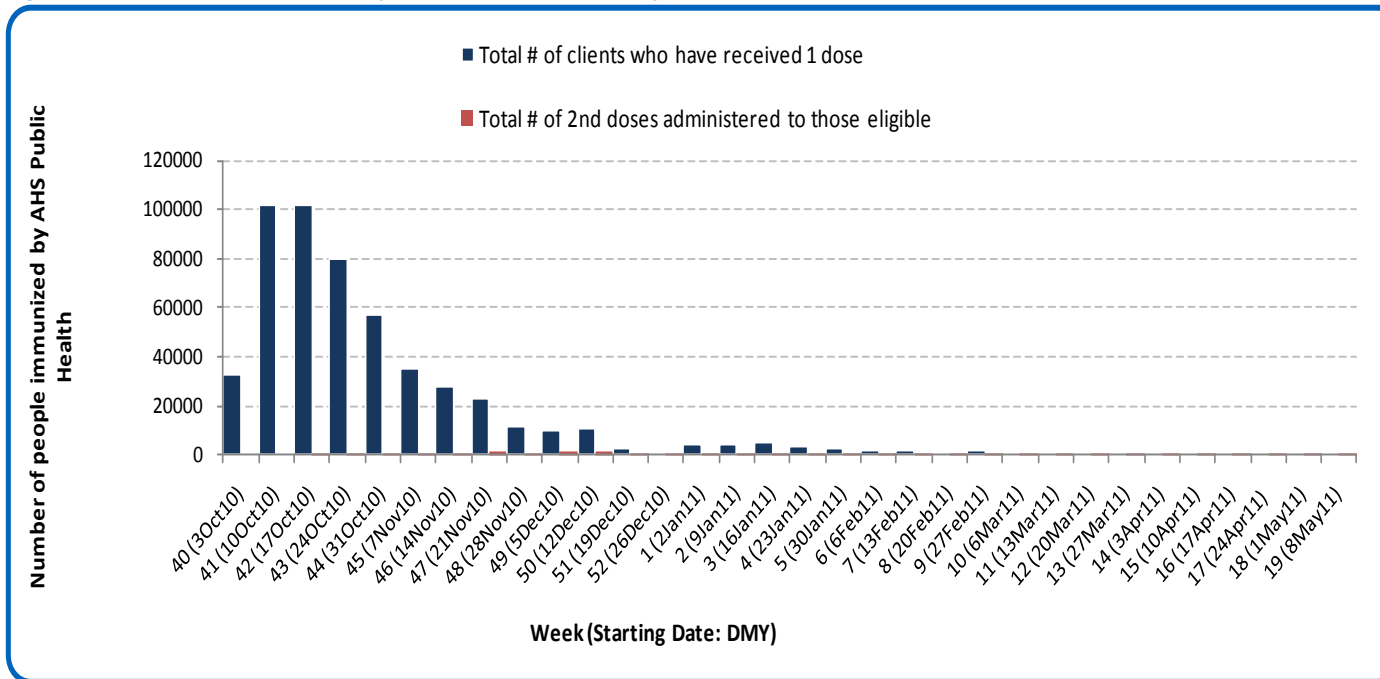
Public Health Surveillance

Report Date: May 17, 2011

An influenza report targeted to the general public is available at: <http://www.health.alberta.ca/health-info/influenza-evidence.html>

[Back to start of section](#)

Figure 1F: Number immunized by AHS (Public Health), by week, Alberta (2010-11)



Source: AHS Zones (doses do not include those delivered by external providers)
 Note: Immunization coverage rates will be reported at the end of the influenza season
 For more information on data definitions and sources see [Annex: Data Notes section at the end of this report](#)

SURVEILLANCE AND HEALTH STATUS ASSESSMENT

Public Health Surveillance

Report Date: May 17, 2011

An influenza report targeted to the general public is available at: <http://www.health.alberta.ca/health-info/influenza-evidence.html>

[Back to start of section](#)

Table 1C: AHS (Public Health) delivered influenza immunizations (with cumulative totals), by priority group, Alberta (2010-11)

Priority Group	# Immunized (Week 19 – May 8th - May 14th, 2010)	Cumulative Number Immunized (since Oct 3, 2010)
Long term care staff	0	2,651
Health care workers	2	19,118
Pregnant women	0	4,768
Residents of long term care	1	4,843
65 years of age and over	8	146,847
All children 6 months up to and including 23 months*	Dose #1	28,244
	Dose #2	10,868
All children 24 months up to and including 59 months*	Dose #1	25,704
	Dose #2	1,644
High risk: 5 years up to and including 8 years*	Dose #1	5,877
	Dose #2	160
High risk: 9 years up to and including 64 years	1	56,152
Healthy: 5 years up to and including 8 years*	Dose #1	19,048
	Dose #2	699
Healthy: 9 years up to and including 64 years	35	212,294
Total number of clients who have received 1 dose	52	525,546
Total number of 2nd doses administered to those eligible*	262	13,371

Source: AHS Zones (doses do not include those delivered by external providers)

*Children under 9 years of age who have not received at least one dose of seasonal influenza vaccine in past years require two doses, given at least four weeks apart.

Note: Immunization coverage rates will be reported at the end of the influenza season

For more information on data definitions and sources see [Annex: Data Notes section at the end of this report](#)

SURVEILLANCE AND HEALTH STATUS ASSESSMENT

Public Health Surveillance

Report Date: May 17, 2011

An influenza report targeted to the general public is available at: <http://www.health.alberta.ca/health-info/influenza-evidence.html>

[Back to start of section](#)

Table 1D: Influenza immunizations delivered by external partners, by priority group, Alberta (Oct 3-Mar 31, 2011)

Priority Group	# Immunized Oct 3, 2010-Mar 31, 2011	
Long term care staff	12,837	
Health care workers	42,981	
Pregnant women	2,093	
Residents of long term care	11,213	
65 years of age and over	63,824	
All children 6 months up to and including 23 months*	Dose #1	1,105
	Dose #2**	124
All children 24 months up to and including 59 months*	Dose #1	1,155
	Dose #2**	118
High risk: 5 years up to and including 8 years*	Dose #1	1,750
	Dose #2**	20
High risk: 9 years up to and including 64 years	34,116	
Healthy: 5 years up to and including 8 years*	Dose #1	2,694
	Dose #2**	56
Healthy: 9 years up to and including 64 years	107,360	
Total number of clients who have received 1 dose	281,128	
Total number of 2nd doses administered to those eligible*	318	

Source: AHS Zones. Zones are required to report doses of seasonal influenza vaccine administered by community and other providers (e.g. physicians, pharmacists, LTC, WHS/OHS programs) twice during the influenza season. These numbers are from the second report (for doses delivered from Oct 3 to Mar 31, 2011).

*Children under 9 years of age who have not received at least one dose of seasonal influenza vaccine in past years require two doses, given at least four weeks apart.

** In some cases, it was not possible to separate dose 1's from dose 2's. Therefore, the dose 1 category may contain some 2nd doses.

Note: Immunization coverage rates will be reported at the end of the influenza season.

For more information on data definitions and sources see [Annex: Data Notes section at the end of this report](#)

SURVEILLANCE AND HEALTH STATUS ASSESSMENT

Public Health Surveillance

Report Date: May 17, 2011

An influenza report targeted to the general public is available at: <http://www.health.alberta.ca/health-info/influenza-evidence.html>

SECTION 2: ZONE 1 - SOUTH

[Back to first page](#)

Summary

With the exception of a sharp increase in rhino-enterovirus activity, respiratory virus activity is generally declining in South Zone.

Laboratory Data (see [Figure 2A](#), [Figure 2B](#), [Figure 2C](#), [Table 2A](#) & [Table 2B](#))

There were no new cases of influenza confirmed in South Zone in Week 19 (May 8-14, 2011), however rhino-enterovirus activity increased sharply. The total number of laboratory confirmed cases of influenza in this part of the province this season is 142. The age specific rate for confirmed influenza in South zone is highest for children between the ages of 2 to less than 5 years, at 15.0 per 10,000.

Outbreaks

There have been no respiratory outbreaks reported in South Zone this season.

Health Link Alberta Calls (see [Figure 2D](#))

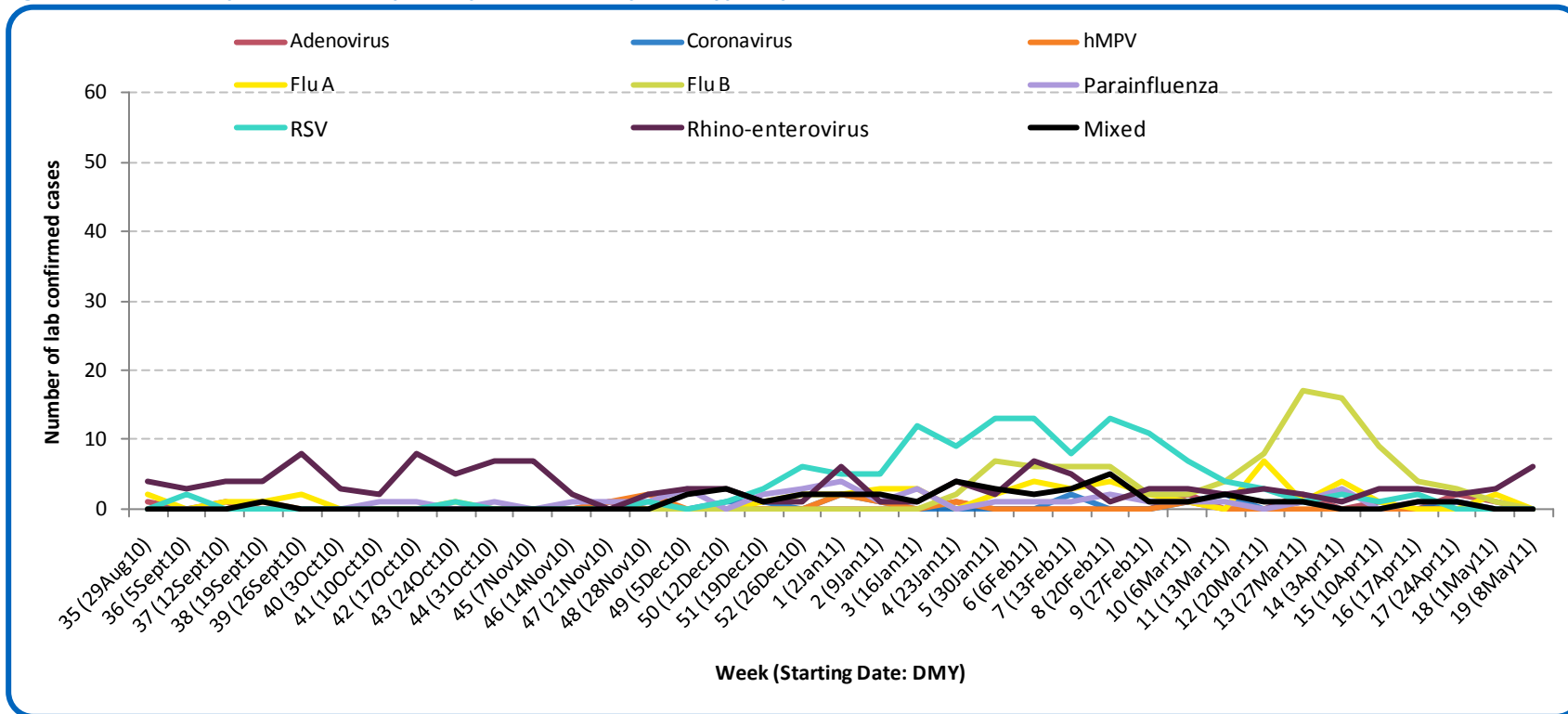
The number of calls to Health Link Alberta for cough or breathing difficulties in the South Zone increased in Week 19 (May 8-14, 2011) compared to the previous week. Generally, this indicator has been fluctuating over the last several weeks.

Emergency Department/Urgent Care Center Visits and Hospital Admissions

This information is not available for South Zone.

[Back to start of section](#)

Figure 2A: Laboratory confirmed respiratory virus cases, by virus type, by week, South Zone (2010-2011)



Sources: DIAL – Provincial Laboratory and the Outbreak Response Toolkit (includes cases with positive respiratory specimens received on or before May 14, 2011). For more information on data definitions and sources see [Annex: Data Notes section at the end of this report](#)

SURVEILLANCE AND HEALTH STATUS ASSESSMENT

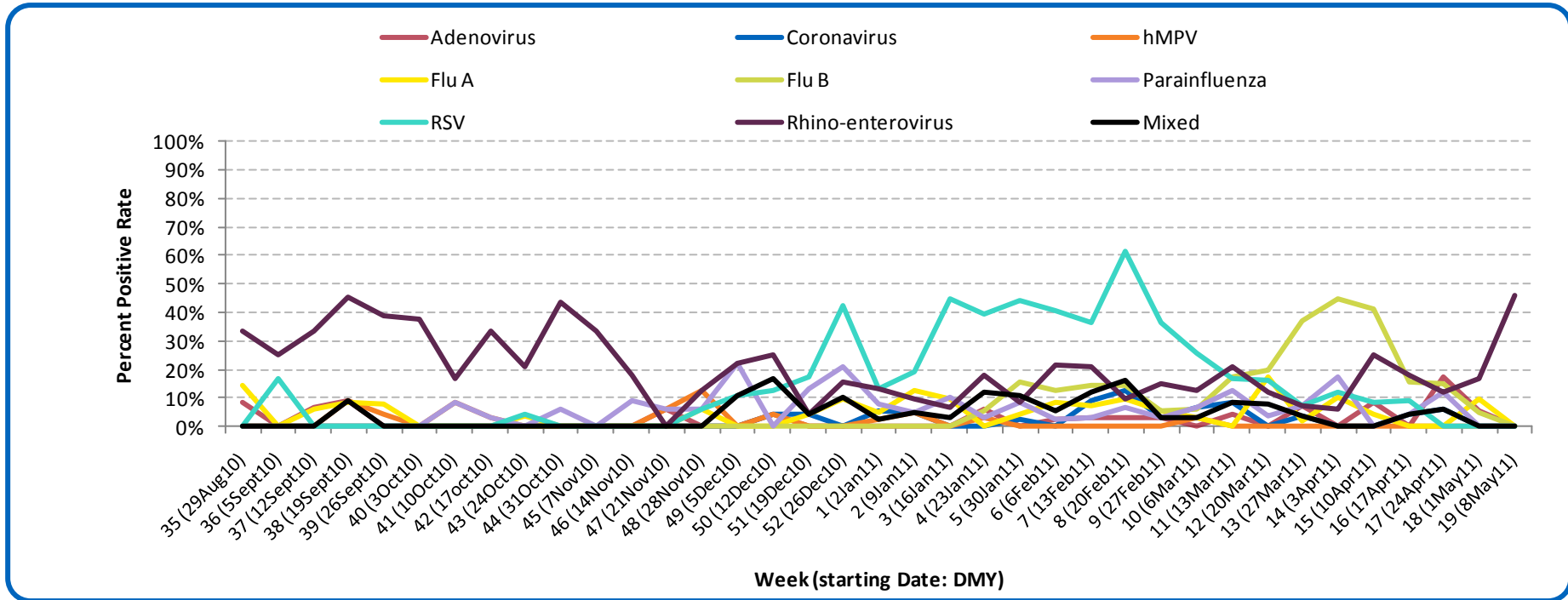
Public Health Surveillance

Report Date: May 17, 2011

An influenza report targeted to the general public is available at: <http://www.health.alberta.ca/health-info/influenza-evidence.html>

[Back to start of section](#)

Figure 2B: Respiratory specimen percent positive rates, by virus type, by week, South Zone (2010-2011)



Source: DIAL – Provincial Laboratory (includes cases with positive respiratory specimens received on or before May 14, 2011)
For more information on data definitions and sources see [Annex: Data Notes section at the end of this report](#)

[Back to start of section](#)

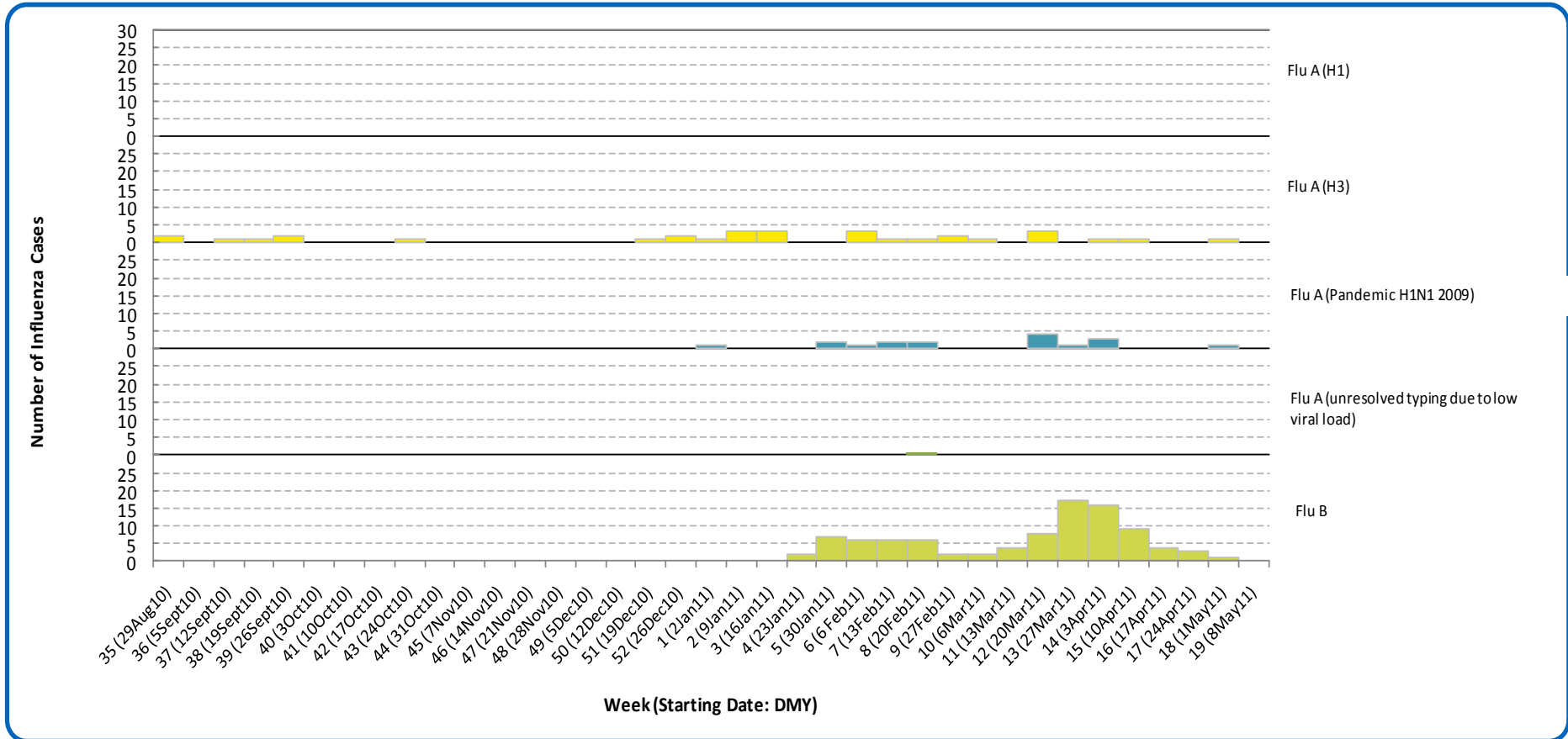
SURVEILLANCE AND HEALTH STATUS ASSESSMENT

Public Health Surveillance

Report Date: May 17, 2011

An influenza report targeted to the general public is available at: <http://www.health.alberta.ca/health-info/influenza-evidence.html>

Figure 2C: Laboratory confirmed influenza cases, by subtype, by week specimen received, South Zone (2010-2011)



Source: Outbreak Response Toolkit (includes cases with positive respiratory specimens received on or before May 14, 2011).

*Note: Two specimens were positive for influenza A or B and one other virus type. One specimen was positive for both influenza A & B.

For more information on data definitions and sources see [Annex: Data Notes section at the end of this report](#)

[Back to start of section](#)

Table 2A: New influenza cases (and age specific rates), by subtype, by age group, Alberta (Week 19: May 8-14, 2011)

	Flu A (Seasonal-H1)		Flu A (Seasonal-H3)		Flu A (Pandemic H1N1 2009)		Flu A (unresolved typing due to low viral load)		Flu B		Total	
	#	Rate (per 10,000)	#	Rate (per 10,000)	#	Rate (per 10,000)	#	Rate (per 10,000)	#	Rate (per 10,000)	#	Rate (per 10,000)
0 to <2 years	0	0.0	0	0.0	0	0.0	0	0.0	0	0.0	0	0.0
2 to <5 years	0	0.0	0	0.0	0	0.0	0	0.0	0	0.0	0	0.0
5 to <9 years	0	0.0	0	0.0	0	0.0	0	0.0	0	0.0	0	0.0
9 to <18 years	0	0.0	0	0.0	0	0.0	0	0.0	0	0.0	0	0.0
18 to <65 years	0	0.0	0	0.0	0	0.0	0	0.0	0	0.0	0	0.0
65 to <75 years	0	0.0	0	0.0	0	0.0	0	0.0	0	0.0	0	0.0
75+ years	0	0.0	0	0.0	0	0.0	0	0.0	0	0.0	0	0.0
Total	0	0.0	0	0.0	0	0.0	0	0.0	0	0.0	0	0.0

Table 2B: Cumulative influenza cases (and age specific rates), by subtype, by age group, South Zone (Aug 29, 2010–May 14, 2011)

	Flu A (Seasonal-H1)		Flu A (Seasonal-H3)		Flu A (Pandemic H1N1 2009)		Flu A (unresolved typing due to low viral load)		Flu B		Total	
	#	Rate (per 10,000)	#	Rate (per 10,000)	#	Rate (per 10,000)	#	Rate (per 10,000)	#	Rate (per 10,000)	#	Rate (per 10,000)
0 to <2 years	0	0.0	4	4.8	0	0.0	0	0.0	5	6.0	9	10.8
2 to <5 years	0	0.0	5	4.2	2	1.7	0	0.0	11	9.2	18	15.0
5 to <9 years	0	0.0	1	0.7	0	0.0	0	0.0	10	6.8	11	7.5
9 to <18 years	0	0.0	0	0.0	1	0.3	0	0.0	23	6.8	24	7.1
18 to <65 years	0	0.0	19	1.1	12	0.7	1	0.1	40	2.3	72	4.1
65 to <75 years	0	0.0	0	0.0	2	1.0	0	0.0	3	1.5	5	2.6
75+ years	0	0.0	2	1.1	0	0.0	0	0.0	1	0.5	3	1.6
Total	0	0.0	31	1.1	17	0.6	1	<0.1	93	3.3	142	5.0

Source for Tables 2A & 2B: Outbreak Response Toolkit (includes cases with positive respiratory specimens received on or before *May 14, 2011*).

Population data values used to calculate rates are for June 30, 2009 and are estimated using actual population values from the Alberta Health Care Insurance Plan (AHCIP) Registration File as of March 31, 2009.

For more information on data definitions and sources see [Annex: Data Notes section at the end of this report](#)

SURVEILLANCE AND HEALTH STATUS ASSESSMENT

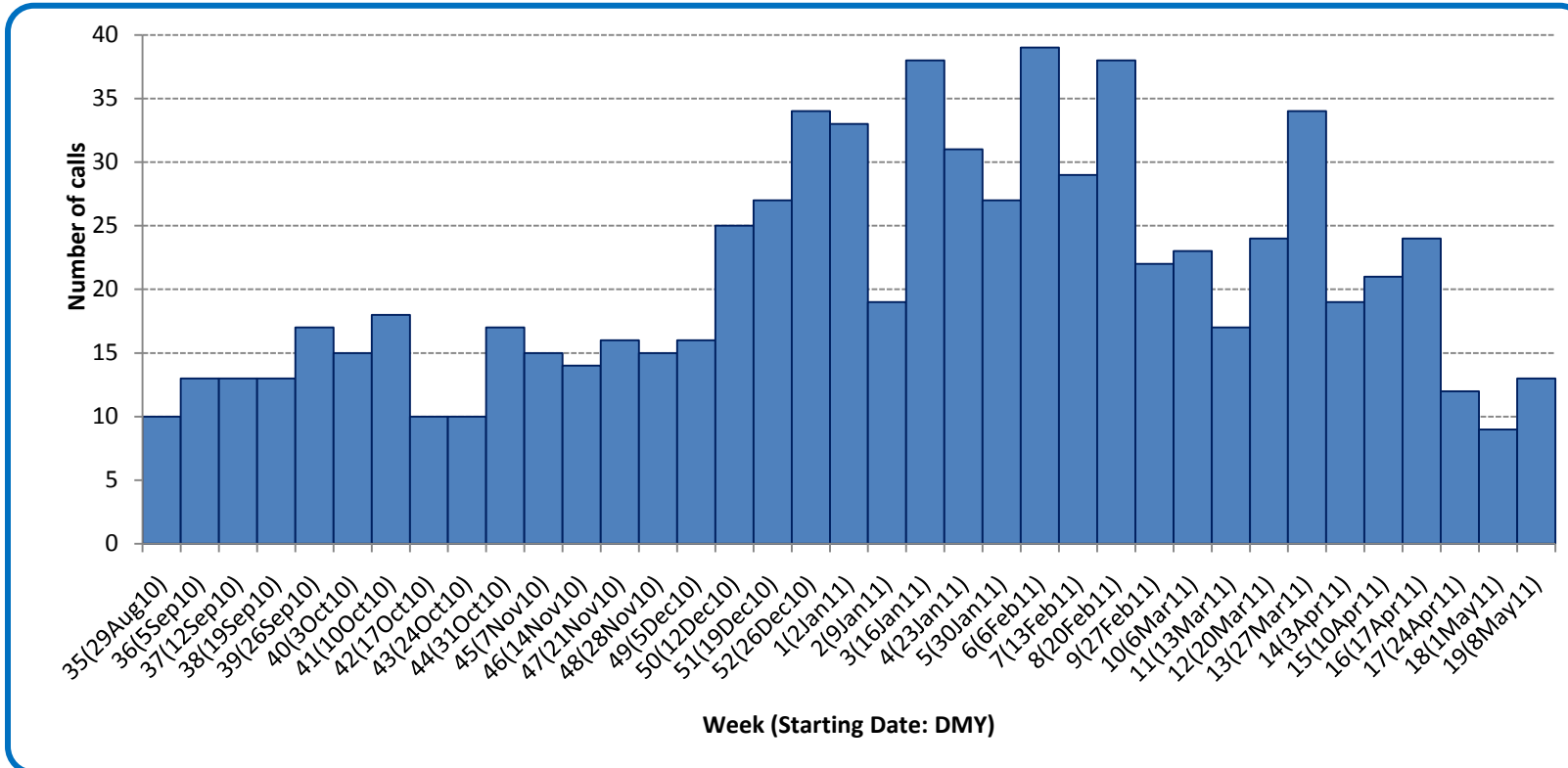
Public Health Surveillance

Report Date: May 17, 2011

An influenza report targeted to the general public is available at: <http://www.health.alberta.ca/health-info/influenza-evidence.html>

[Back to start of section](#)

Figure 2D: Number of calls to Health Link Alberta for cough or breathing difficulties, by week, South Zone (2010-11)



Source: Sharp Focus - Health Link Alberta - via Alberta Real Time Syndromic Surveillance Net (ARTSSN) as of 23:59 on May 14, 2011. For more information on data definitions and sources see [Annex: Data Notes section at the end of this report](#)

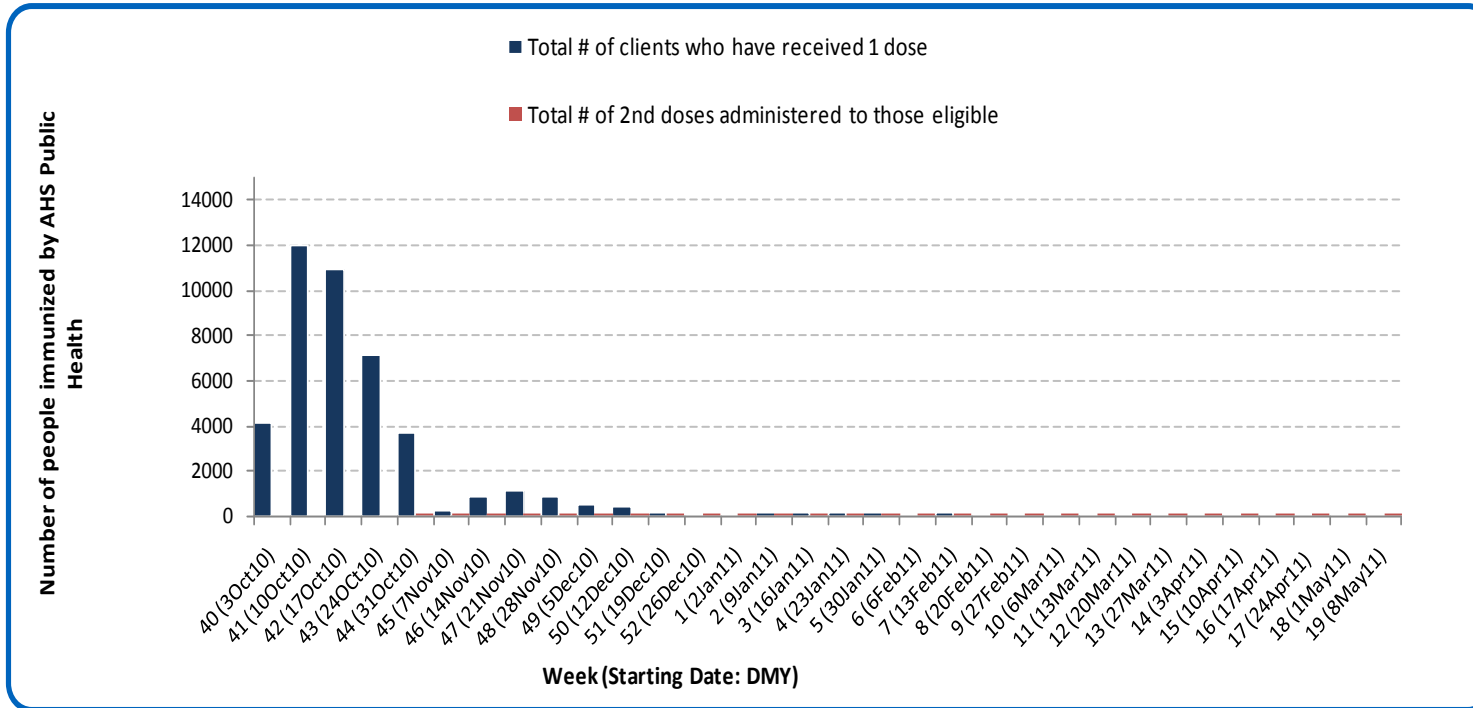
SURVEILLANCE AND HEALTH STATUS ASSESSMENT

Public Health Surveillance
Report Date: May 17, 2011

An influenza report targeted to the general public is available at: <http://www.health.alberta.ca/health-info/influenza-evidence.html>

[Back to start of section](#)

Figure 2E: Number immunized by AHS (Public Health), by week, South Zone (2010-2011)



Source: AHS Zones (doses do not include those delivered by external providers)
 Note: Immunization coverage rates will be reported at the end of the influenza season
 For more information on data definitions and sources see [Annex: Data Notes section at the end of this report](#)

[Back to start of section](#)

Table 2C: AHS (Public Health) delivered influenza immunizations (with cumulative totals), by priority group, South Zone (2010-2011)

Priority Group		# Immunized (Week 19 – May 8th - May 14th, 2010)	Cumulative Number Immunized (since Oct 3, 2010)
Long term care staff		0	618
Health care workers		0	1,577
Pregnant women		0	302
Residents of long term care		0	730
65 years of age and over		0	15,604
All children 6 months up to and including 23 months*	Dose #1	0	1,670
	Dose #2	19	762
All children 24 months up to and including 59 months*	Dose #1	0	2,011
	Dose #2	2	144
High risk: 5 years up to and including 8 years*	Dose #1	0	508
	Dose #2	0	22
High risk: 9 years up to and including 64 years		0	4,131
Healthy: 5 years up to and including 8 years*	Dose #1	0	1,518
	Dose #2	1	70
Healthy: 9 years up to and including 64 years		2	14,786
Total number of clients who have received 1 dose		2	43,455
Total number of 2nd doses administered to those eligible*		22	998

Source: AHS Zones (doses do not include those delivered by external providers)

*Children under 9 years of age who have not received at least one dose of seasonal influenza vaccine in past years require two doses, given at least four weeks apart.

Note: Immunization coverage rates will be reported at the end of the influenza season

For more information on data definitions and sources see [Annex: Data Notes section at the end of this report](#)

SURVEILLANCE AND HEALTH STATUS ASSESSMENT

Public Health Surveillance

Report Date: May 17, 2011

An influenza report targeted to the general public is available at: <http://www.health.alberta.ca/health-info/influenza-evidence.html>

[Back to start of section](#)

Table 2D: Influenza immunizations delivered by external partners, by priority group, South Zone (Oct 3-Mar 31, 2011)

Priority Group		# Immunized Oct 3, 2010-Mar 31, 2011
Long term care staff		565
Health care workers		3,367
Pregnant women		224
Residents of long term care		571
65 years of age and over		4,588
All children 6 months up to and including 23 months*	Dose #1	9
	Dose #2**	0
All children 24 months up to and including 59 months*	Dose #1	11
	Dose #2**	0
High risk: 5 years up to and including 8 years*	Dose #1	41
	Dose #2**	0
High risk: 9 years up to and including 64 years		2,381
Healthy: 5 years up to and including 8 years*	Dose #1	14
	Dose #2**	0
Healthy: 9 years up to and including 64 years		7,117
Total number of clients who have received 1 dose		18,888
Total number of 2nd doses administered to those eligible*		0

Source: AHS Zones. Zones are required to report doses of seasonal influenza vaccine administered by community and other providers (e.g. physicians, pharmacists, LTC, WHS/OHS programs) twice during the influenza season. These numbers are from the second report (for doses delivered from Oct 3 to Mar 31, 2011).

*Children under 9 years of age who have not received at least one dose of seasonal influenza vaccine in past years require two doses, given at least four weeks apart.

** In some cases, it was not possible to separate dose 1's from dose 2's. Therefore, the dose 1 category may contain some 2nd doses.

Note: Immunization coverage rates will be reported at the end of the influenza season

For more information on data definitions and sources see [Annex: Data Notes section at the end of this report](#)

SURVEILLANCE AND HEALTH STATUS ASSESSMENT

Public Health Surveillance

Report Date: May 17, 2011

An influenza report targeted to the general public is available at: <http://www.health.alberta.ca/health-info/influenza-evidence.html>

SECTION 3: ZONE 2 - CALGARY

[Back to first page](#)

Summary

Despite ongoing rhino-enterovirus activity, respiratory virus activity is generally declining in Calgary Zone.

Laboratory Data (see [Figure 3A](#), [Figure 3B](#), [Figure 3C](#), [Table 3A](#) & [Table 3B](#))

Influenza activity in Calgary Zone continues to be low. Rhino-enterovirus is currently the predominant respiratory virus circulating. Since the beginning of the season, a total of 380 cases of influenza have been confirmed in Calgary Zone (37.6% have been identified as influenza A (H3), 13.7% as influenza A (H1N1) 2009, 46.1% as influenza type B and 2.6% as influenza A with unresolved sub-typing). Compared to the age specific rates in other age groups, the rate for confirmed influenza is highest among infants less than 2 years of age at 12.2 per 10,000.

Outbreaks (see [Figure 3D](#))

There have been no new outbreaks confirmed or reported in Calgary Zone since the last update.

Health Link Alberta Calls (see [Figure 3E](#))

The number of calls to Health Link Alberta for cough or breathing difficulties in the Calgary Zone decreased in Week 19 (May 8-14, 2011) compared to the previous week. Aside from one increase observed two weeks prior to that, this indicator has been decreasing since the end of February, 2011.

Emergency Department/Urgent Care Center Visits and Hospital Admissions (See [Figure 3F](#))

The number of visits to emergency departments and hospital admissions for patients with influenza-like-illness (ILI) symptoms decreased by 17% and 33%, respectively, in Week 19 (May 8-14, 2011) compared to the week prior to that. The trend for emergency department visits appears to be declining overall, while the trend for hospital admissions has been fluctuating.

The number of emergency department visits and hospital admissions for cough at the six urban emergency departments/urgent care centers (ED's) in the City of Calgary decreased by 19% in Week 19 (May 8-14, 2011) compared to the previous week, while hospital admissions increased by 25%. Generally, the trend over the last several weeks for emergency department visits for ILI has been decreasing, while the number of hospital admissions for ILI has been fluctuating.

SURVEILLANCE AND HEALTH STATUS ASSESSMENT

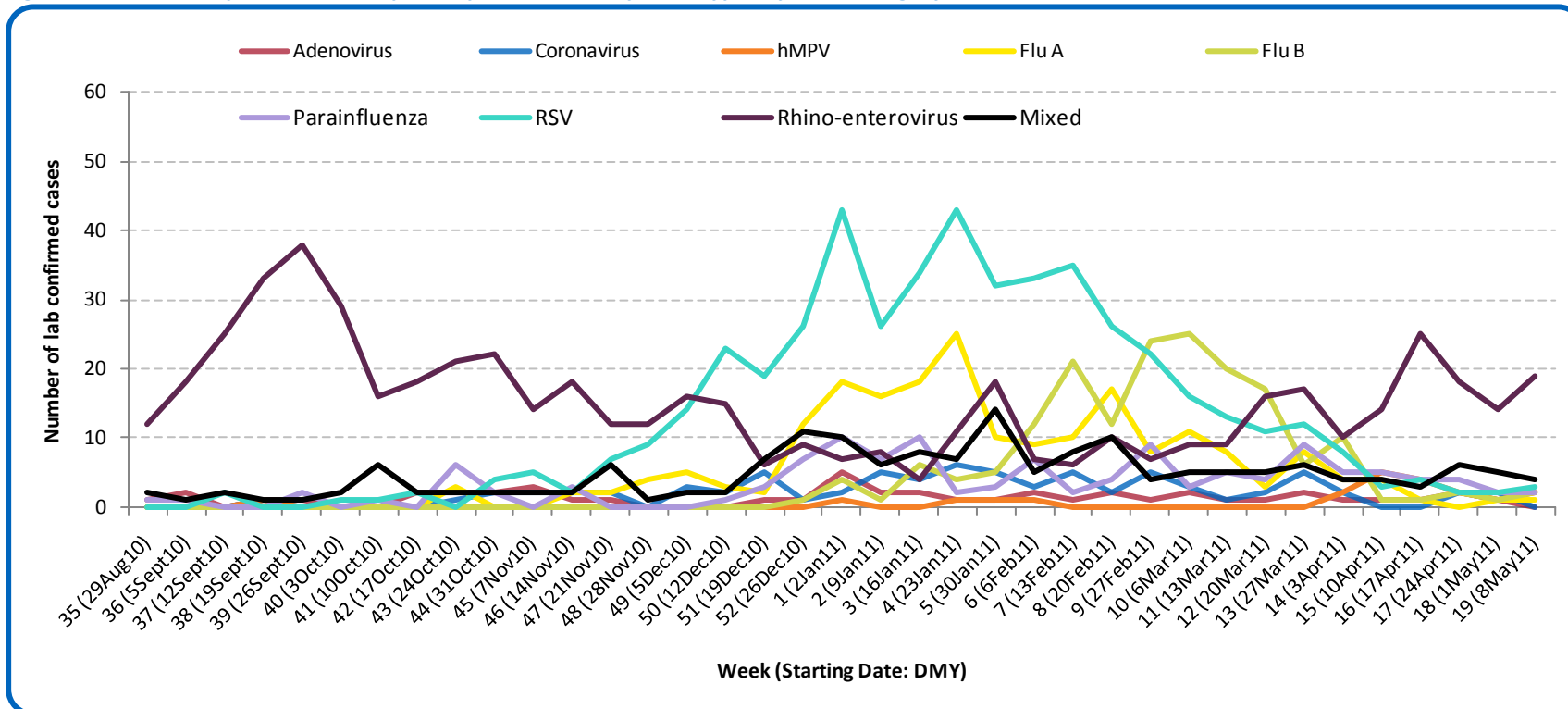
Public Health Surveillance

Report Date: May 17, 2011

An influenza report targeted to the general public is available at: <http://www.health.alberta.ca/health-info/influenza-evidence.html>

[Back to start of section](#)

Figure 3A: Laboratory confirmed respiratory virus cases, by virus type, by week, Calgary Zone (2010-2011)



Sources: DIAL – Provincial Laboratory and the Outbreak Response Toolkit (includes cases with positive respiratory specimens received on or before May 14, 2011). For more information on data definitions and sources see [Annex: Data Notes section at the end of this report](#)

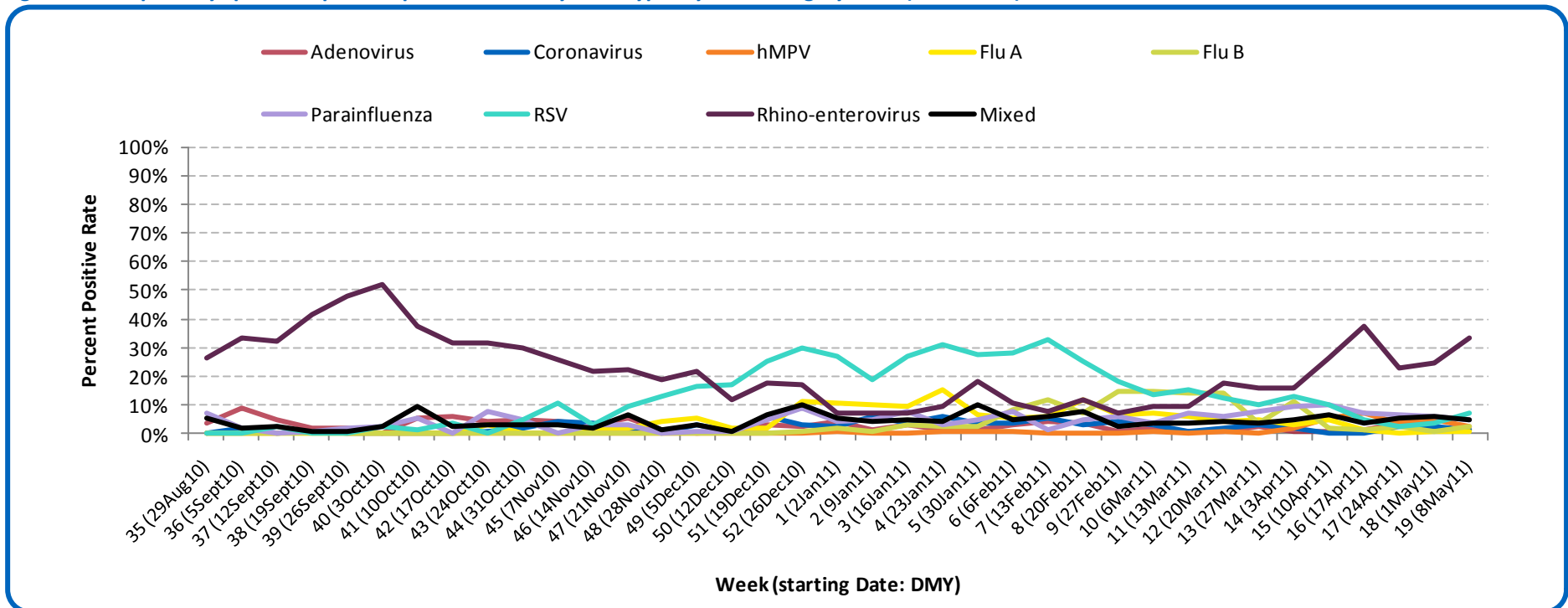
SURVEILLANCE AND HEALTH STATUS ASSESSMENT

Public Health Surveillance
Report Date: May 17, 2011

An influenza report targeted to the general public is available at: <http://www.health.alberta.ca/health-info/influenza-evidence.html>

[Back to start of section](#)

Figure 3B: Respiratory specimen percent positive rates, by virus type, by week, Calgary Zone (2010-2011)



Source: DIAL – Provincial Laboratory (includes cases with positive respiratory specimens received on or before May 14, 2011)
For more information on data definitions and sources see [Annex: Data Notes section at the end of this report](#)

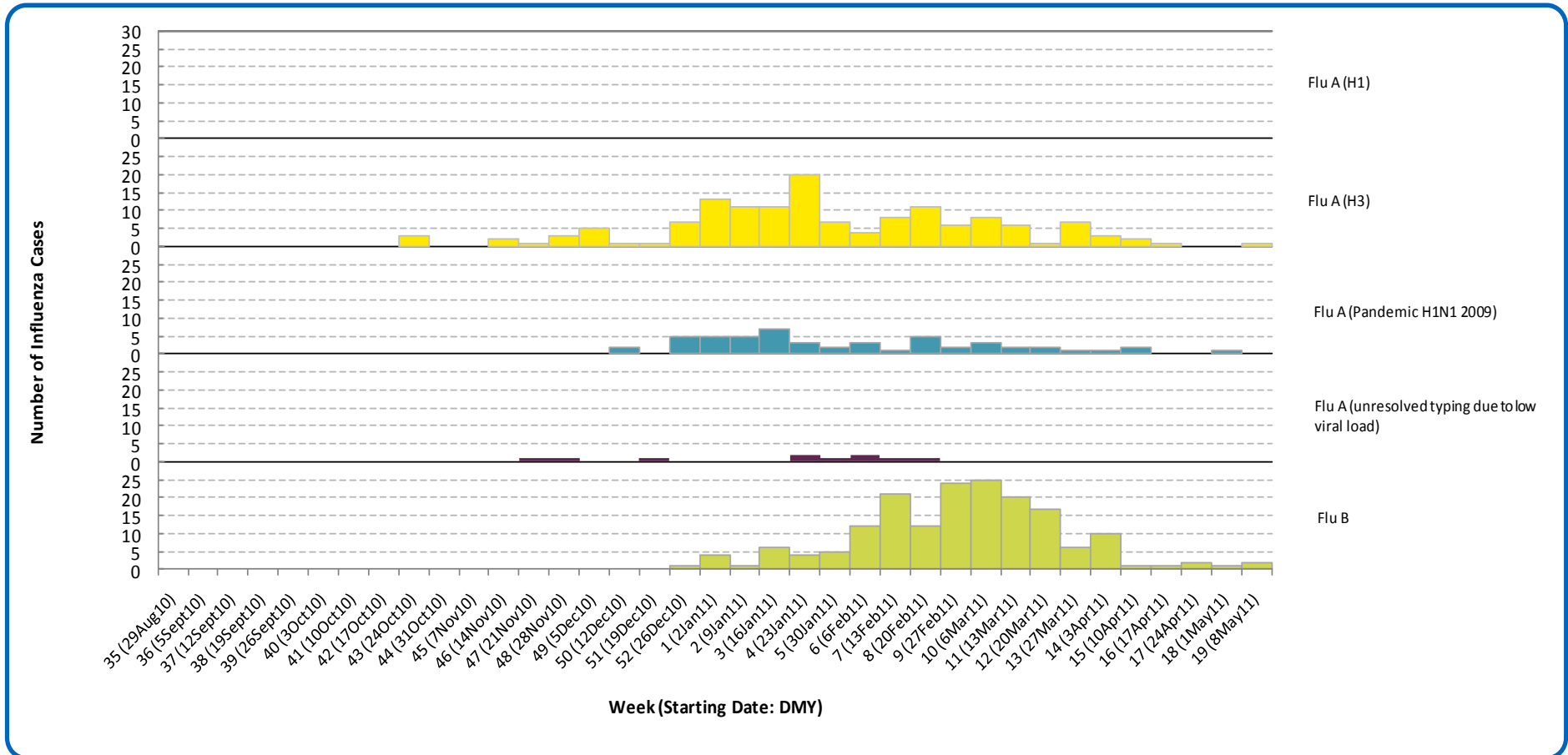
SURVEILLANCE AND HEALTH STATUS ASSESSMENT

Public Health Surveillance
Report Date: May 17, 2011

An influenza report targeted to the general public is available at: <http://www.health.alberta.ca/health-info/influenza-evidence.html>

[Back to start of section](#)

Figure 3C: Laboratory confirmed influenza cases, by subtype, by week specimen received, Calgary Zone (2010-2011)



*Note: Five specimens were positive for influenza A or B and one or more other virus type(s). One specimen was positive for both influenza A & B.

Source: Outbreak Response Toolkit (includes cases with positive respiratory specimens received on or before May 14, 2011).

For more information on data definitions and sources see [Annex: Data Notes section at the end of this report](#)

[Back to start of section](#)

Table 3A: New influenza cases (and age specific rates), by subtype, by age group, Calgary Zone (Week 19: May 8-14, 2011)

	Flu A (Seasonal-H1)		Flu A (Seasonal-H3)		Flu A (Pandemic H1N1 2009)		Flu A (unresolved typing due to low viral load)		Flu B		Total	
	#	Rate (per 10,000)	#	Rate (per 10,000)	#	Rate (per 10,000)	#	Rate (per 10,000)	#	Rate (per 10,000)	#	Rate (per 10,000)
0 to <2 years	0	0.0	0	0.0	0	0.0	0	0.0	0	0.0	0	0.0
2 to <5 years	0	0.0	1	0.2	0	0.0	0	0.0	2	0.4	3	0.6
5 to <9 years	0	0.0	0	0.0	0	0.0	0	0.0	0	0.0	0	0.0
9 to <18 years	0	0.0	0	0.0	0	0.0	0	0.0	0	0.0	0	0.0
18 to <65 years	0	0.0	0	0.0	0	0.0	0	0.0	0	0.0	0	0.0
65 to <75 years	0	0.0	0	0.0	0	0.0	0	0.0	0	0.0	0	0.0
75+ years	0	0.0	0	0.0	0	0.0	0	0.0	0	0.0	0	0.0
Total	0	0.0	1	<0.1	0	0.0	0	0.0	2	<0.1	3	<0.1

Table 3B: Cumulative influenza cases (and age specific rates), by subtype, by age group, Calgary Zone (Aug 29, 2010 – May 14, 2011)

	Flu A (Seasonal-H1)		Flu A (Seasonal-H3)		Flu A (Pandemic H1N1 2009)		Flu A (unresolved typing due to low viral load)		Flu B		Total	
	#	Rate (per 10,000)	#	Rate (per 10,000)	#	Rate (per 10,000)	#	Rate (per 10,000)	#	Rate (per 10,000)	#	Rate (per 10,000)
0 to <2 years	0	0.0	18	4.8	7	1.9	1	0.3	20	5.3	46	12.2
2 to <5 years	0	0.0	13	2.4	3	0.6	1	0.2	18	3.3	35	6.5
5 to <9 years	0	0.0	9	1.4	1	0.2	2	0.3	30	4.6	42	6.5
9 to <18 years	0	0.0	10	0.7	1	0.1	2	0.1	44	3.0	57	3.9
18 to <65 years	0	0.0	64	0.7	39	0.4	3	<0.1	60	0.6	166	1.8
65 to <75 years	0	0.0	9	1.2	1	0.1	0	0.0	2	0.3	12	1.6
75+ years	0	0.0	20	3.3	0	0.0	1	0.2	1	0.2	22	3.6
Total	0	0.0	143	1.0	52	0.4	10	0.1	175	1.3	380	2.8

Source for tables 3A & 3B: Outbreak Response Toolkit (includes cases with positive respiratory specimens received on or before *May 14, 2011*).

Population data values used to calculate rates are for June 30, 2009 and are estimated using actual population values from the Alberta Health Care Insurance Plan (AHCIP) Registration File as of March 31, 2009.

For more information on data definitions and sources see [Annex: Data Notes section at the end of this report](#)

[Back to start of section](#)

SURVEILLANCE AND HEALTH STATUS ASSESSMENT

Public Health Surveillance

Report Date: May 17, 2011

An influenza report targeted to the general public is available at: <http://www.health.alberta.ca/health-info/influenza-evidence.html>

Figure 3D: Respiratory outbreaks, by facility type, by onset week, Calgary Zone (2010-2011; school outbreaks may not have a laboratory confirmation)

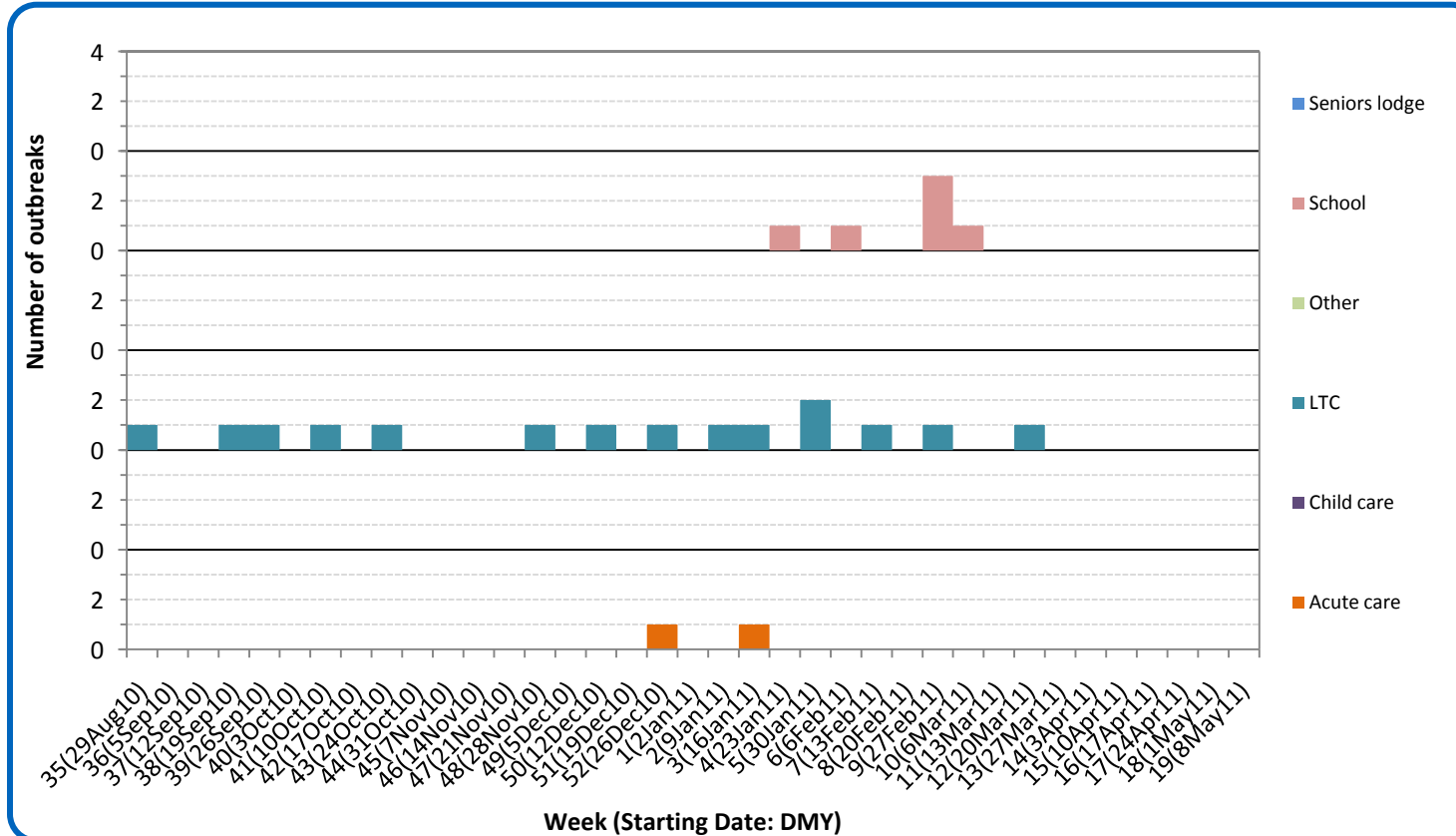
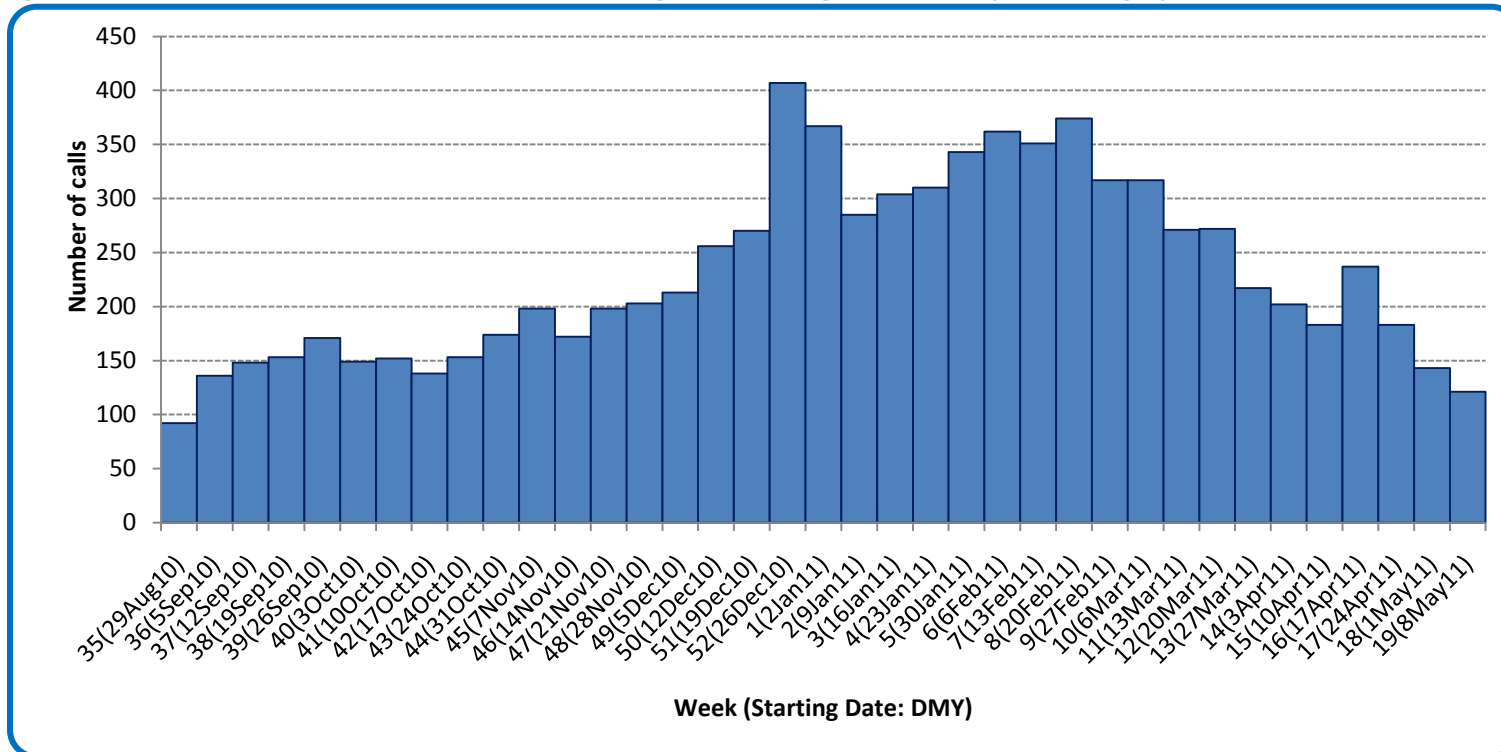


Figure 3E: Number of calls to Health Link Alberta for cough or breathing difficulties, by week, Calgary Zone (2010-11)



Source: Sharp Focus - Health Link Alberta - via Alberta Real Time Syndromic Surveillance Net (ARTSSN) as of 23:59 on May 14, 2011. For more information on data definitions and sources see [Annex: Data Notes section at the end of this report](#)

[Back to first start of section](#)

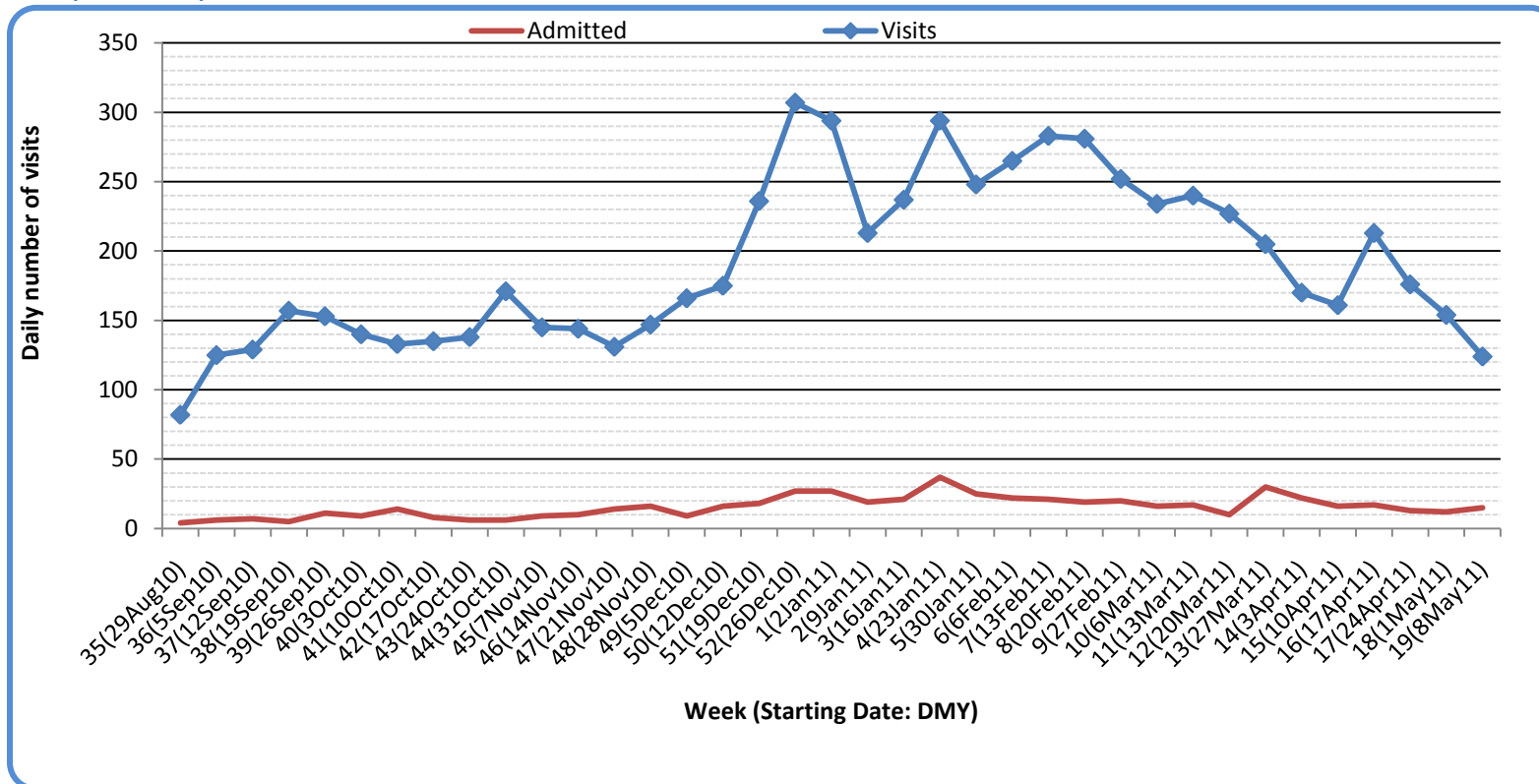
SURVEILLANCE AND HEALTH STATUS ASSESSMENT

Public Health Surveillance

Report Date: May 17, 2011

An influenza report targeted to the general public is available at: <http://www.health.alberta.ca/health-info/influenza-evidence.html>

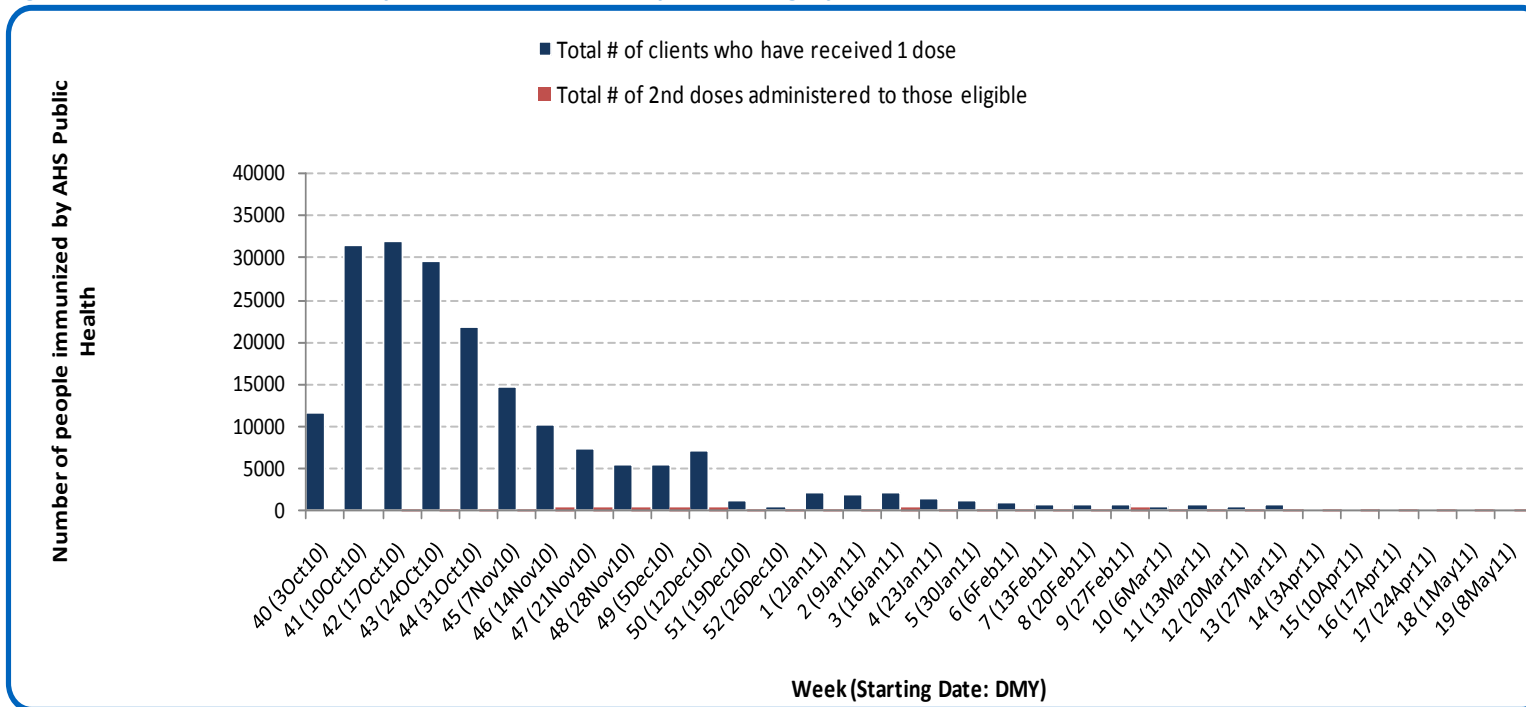
Figure 3F: Visits to urban emergency departments/urgent care centers in the City of Calgary with cough symptoms and admissions to hospitals, by visit week (2010-2011)



Source: Alberta Real Time Syndromic Surveillance Net (ARTSSN) as of 23:59 on May 14, 2011.
For more information on data definitions and sources see [Annex: Data Notes section at the end of this report](#)

[Back to start of section](#)

Figure 3G: Number immunized by AHS (Public Health), by week, Calgary Zone (2010-2011)



Source: AHS Zones (doses do not include those delivered by external providers)
 Note: Immunization coverage rates will be reported at the end of the influenza season
 For more information on data definitions and sources see [Annex: Data Notes section at the end of this report](#)

[Back to start of section](#)

Table 3C: AHS (Public Health) delivered influenza immunizations (with cumulative totals), by priority group, Calgary Zone (2010-2011)

Priority Group		# Immunized (Week 19 – May 8th - May 14th, 2010)	Cumulative Number Immunized (since Oct 3, 2010)
Long term care staff		0	453
Health care workers		0	5,359
Pregnant women		0	2,009
Residents of long term care		0	706
65 years of age and over		0	44,734
All children 6 months up to and including 23 months*	Dose #1	1	14,772
	Dose #2	162	5,392
All children 24 months up to and including 59 months*	Dose #1	1	11,585
	Dose #2	6	711
High risk: 5 years up to and including 8 years*	Dose #1	0	2,392
	Dose #2	2	63
High risk: 9 years up to and including 64 years		0	20,048
Healthy: 5 years up to and including 8 years*	Dose #1	0	7,550
	Dose #2	4	290
Healthy: 9 years up to and including 64 years		4	84,752
Total number of clients who have received 1 dose		6	194,360
Total number of 2nd doses administered to those eligible*		174	6,456

Source: AHS Zones (doses do not include those delivered by external providers)

*Children under 9 years of age who have not received at least one dose of seasonal influenza vaccine in past years require two doses, given at least four weeks apart.

Note: Immunization coverage rates will be reported at the end of the influenza season

For more information on data definitions and sources see [Annex: Data Notes section at the end of this report](#)

SURVEILLANCE AND HEALTH STATUS ASSESSMENT

Public Health Surveillance

Report Date: May 17, 2011

An influenza report targeted to the general public is available at: <http://www.health.alberta.ca/health-info/influenza-evidence.html>

[Back to start of section](#)

Table 3D: Influenza immunizations delivered by external partners, by priority group, Calgary Zone (Oct 3-Mar 31, 2011)

Priority Group		# Immunized Oct 3, 2010-Mar 31, 2011
Long term care staff		5,789
Health care workers		15,809
Pregnant women		1,480
Residents of long term care		5,275
65 years of age and over		31,101
All children 6 months up to and including 23 months*	Dose #1	699
	Dose #2**	51
All children 24 months up to and including 59 months*	Dose #1	525
	Dose #2**	89
High risk: 5 years up to and including 8 years*	Dose #1	626
	Dose #2**	18
High risk: 9 years up to and including 64 years		15,779
Healthy: 5 years up to and including 8 years*	Dose #1	1,377
	Dose #2**	47
Healthy: 9 years up to and including 64 years		59,807
Total number of clients who have received 1 dose		138,267
Total number of 2nd doses administered to those eligible*		205

Source: AHS Zones. Zones are required to report doses of seasonal influenza vaccine administered by community and other providers (e.g. physicians, pharmacists, LTC, WHS/OHS programs) twice during the influenza season. These numbers are from the second report (for doses delivered from Oct 3 to Mar 31, 2011.)

*Children under 9 years of age who have not received at least one dose of seasonal influenza vaccine in past years require two doses, given at least four weeks apart.

**In some cases, it was not possible to separate dose 1's from dose 2's. Therefore, dose 1 category may contain some 2nd doses.

Note: Immunization coverage rates will be reported at the end of the influenza season

For more information on data definitions and sources see [Annex: Data Notes section at the end of this report](#)

SURVEILLANCE AND HEALTH STATUS ASSESSMENT

Public Health Surveillance

Report Date: May 17, 2011

An influenza report targeted to the general public is available at: <http://www.health.alberta.ca/health-info/influenza-evidence.html>

SECTION 4: ZONE 3 - CENTRAL

[Back to first page](#)

Summary

Overall, respiratory virus activity appears to be declining in Central Zone, although laboratory data indicate continued circulation of rhino-enterovirus.

Laboratory Data (see [Figure 4A](#), [Figure 4B](#), [Figure 4C](#), [Table 4A](#) & [Table 4B](#))

The number of influenza cases confirmed in Week 19 (May 8-14, 2011) decreased from the number confirmed the previous week. With the exception of one increase observed the week prior, this indicator has been gradually declining for several weeks now. Rhino-enterovirus is currently the predominant respiratory virus currently circulating. This season, the total number of influenza cases confirmed in Central Zone is 204 (51.5% have been identified as influenza A (H3), 10.8% as influenza A (H1N1) 2009, 35.8% as influenza B and 2.0% as influenza A with unresolved sub-typing). At this point in the season, the age-specific rate for confirmed cases of influenza (all types) is highest for infants under the age of 2 years, at 20.2 per 10,000.

Outbreaks (see [Figure 4D](#))

One respiratory outbreak, mentioned in a previous update, has now been confirmed in Central Zone. It occurred in a long term care facility and was attributed to influenza A (H3). The attack rate was calculated as 30%. The onset of symptoms occurred in Week 14 (Apr 3-9, 2011). Please note, one confirmed influenza A (H3) outbreak included in last week's update was erroneously reported to have a final attack rate of 16%. This was actually only a preliminary attack rate. The final attack rate was calculated as 45%.

No new respiratory outbreaks have been reported in Central Zone.

Health Link Alberta Calls (see [Figure 4E](#))

The number of calls to Health Link Alberta in Central Zone for cough or breathing difficulties continues to decline. This indicator is currently at the same level seen early in the 2010-11 influenza season.

Emergency Department/Urgent Care Center Visits and Hospital Admissions

There are no data available from this zone.

SURVEILLANCE AND HEALTH STATUS ASSESSMENT

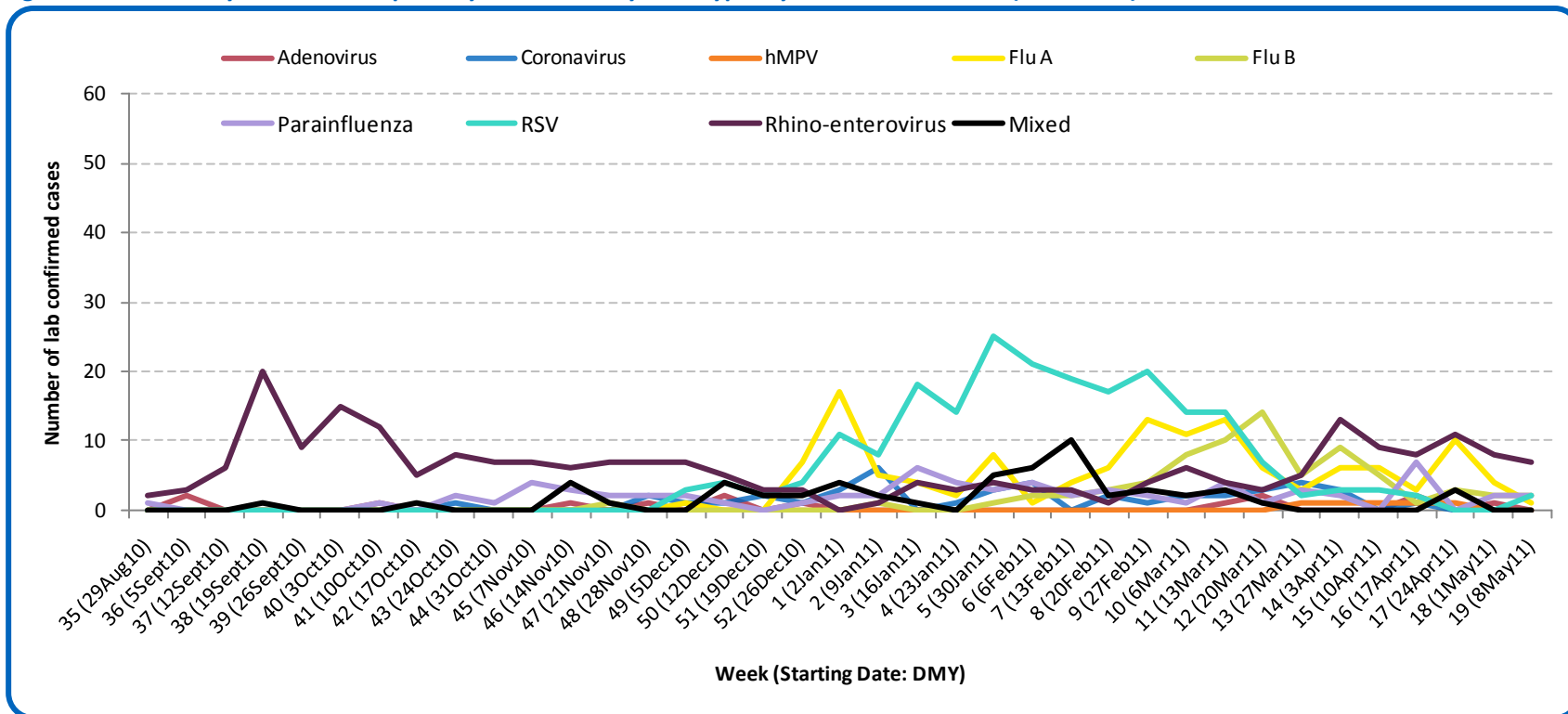
Public Health Surveillance

Report Date: May 17, 2011

An influenza report targeted to the general public is available at: <http://www.health.alberta.ca/health-info/influenza-evidence.html>

[Back to start of section](#)

Figure 4A: Laboratory confirmed respiratory virus cases, by virus type, by week, Central Zone (2010-2011)



Sources: DIAL – Provincial Laboratory and the Outbreak Response Toolkit (includes cases with positive respiratory specimens received on or before May 14, 2011). For more information on data definitions and sources see [Annex: Data Notes section at the end of this report](#)

SURVEILLANCE AND HEALTH STATUS ASSESSMENT

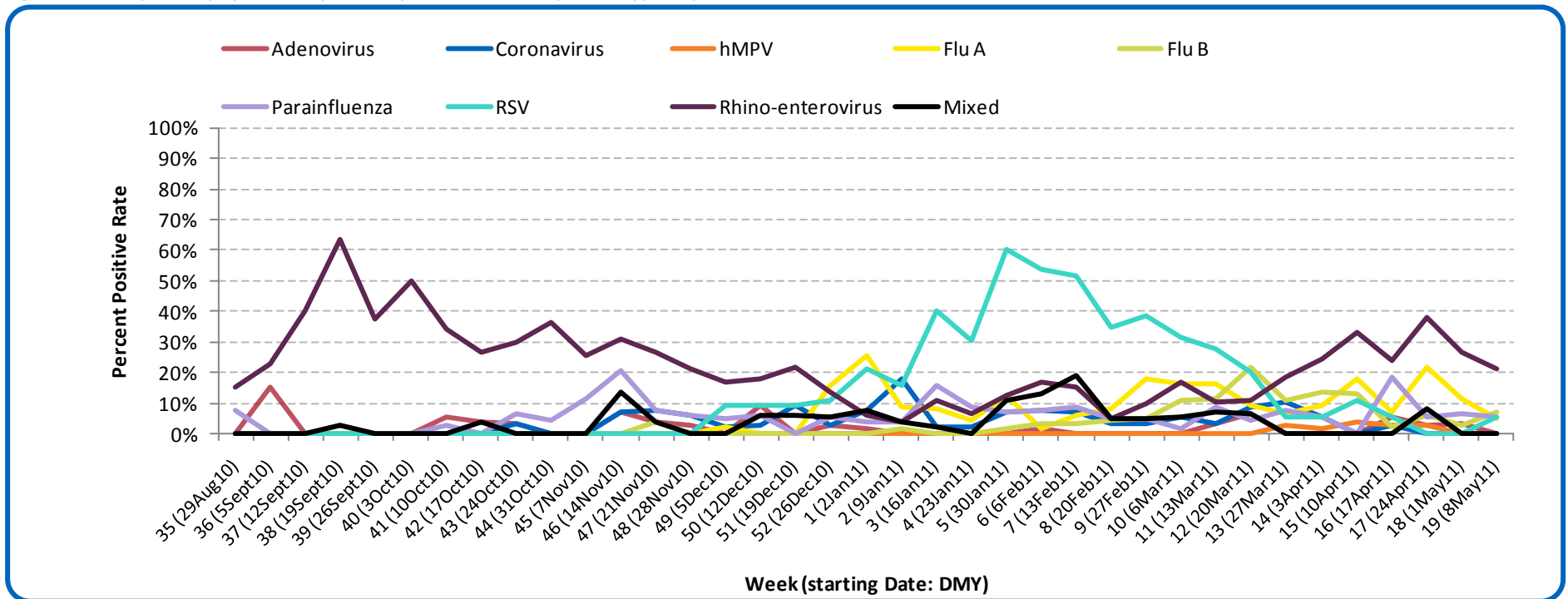
Public Health Surveillance

Report Date: May 17, 2011

An influenza report targeted to the general public is available at: <http://www.health.alberta.ca/health-info/influenza-evidence.html>

[Back to start of section](#)

Figure 4B: Respiratory specimen percent positive rates, by virus type, by week, Central Zone (2010-2011)



Source: DIAL – Provincial Laboratory (includes cases with positive respiratory specimens received on or before May 14, 2011)
For more information on data definitions and sources see [Annex: Data Notes section at the end of this report](#)

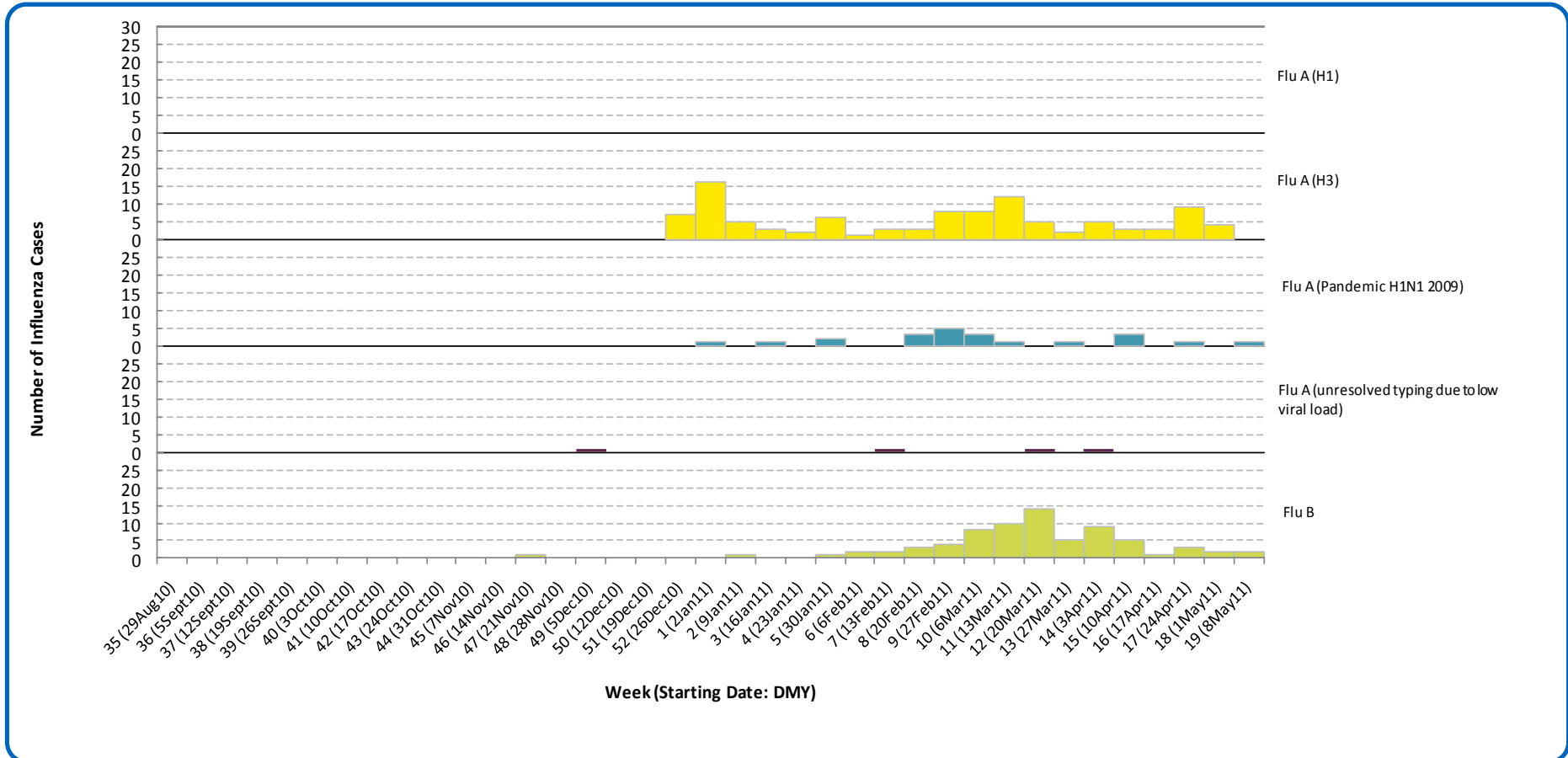
[Back to start of section](#)

SURVEILLANCE AND HEALTH STATUS ASSESSMENT

Public Health Surveillance
Report Date: May 17, 2011

An influenza report targeted to the general public is available at: <http://www.health.alberta.ca/health-info/influenza-evidence.html>

Figure 4C: Laboratory confirmed influenza cases, by subtype, by week specimen received, Central Zone (2010-2011)



*Note: Seven specimens were positive for influenza A or B and one or more other virus type(s).
 Source: Outbreak Response Toolkit (includes cases with positive respiratory specimens received on or before May 14, 2011).
 For more information on data definitions and sources see [Annex: Data Notes section at the end of this report](#)

[Back to start of section](#)

Table 4A: New influenza cases (and age specific rates), by subtype, by age group, Central Zone (Week 19: May 8-14, 2011)

	Flu A (Seasonal-H1)		Flu A (Seasonal-H3)		Flu A (Pandemic H1N1 2009)		Flu A (unresolved typing due to low viral load)		Flu B		Total	
	#	Rate (per 10,000)	#	Rate (per 10,000)	#	Rate (per 10,000)	#	Rate (per 10,000)	#	Rate (per 10,000)	#	Rate (per 10,000)
0 to <2 years	0	0.0	0	0.0	0	0.0	0	0.0	1	0.8	1	0.8
2 to <5 years	0	0.0	0	0.0	0	0.0	0	0.0	0	0.0	0	0.0
5 to <9 years	0	0.0	0	0.0	0	0.0	0	0.0	0	0.0	0	0.0
9 to <18 years	0	0.0	0	0.0	0	0.0	0	0.0	1	0.2	1	0.2
18 to <65 years	0	0.0	0	0.0	1	<0.1	0	0.0	0	0.0	1	<0.1
65 to <75 years	0	0.0	0	0.0	0	0.0	0	0.0	0	0.0	0	0.0
75+ years	0	0.0	0	0.0	0	0.0	0	0.0	0	0.0	0	0.0
Total	0	0.0	0	0.0	1	<0.1	0	0.0	2	<0.1	3	0.1

Table 4B: Cumulative influenza cases (and age specific rates), by subtype, by age group, Central Zone (Aug 29, 2010 – May 14, 2011)

	Flu A (Seasonal-H1)		Flu A (Seasonal-H3)		Flu A (Pandemic H1N1 2009)		Flu A (unresolved typing due to low viral load)		Flu B		Total	
	#	Rate (per 10,000)	#	Rate (per 10,000)	#	Rate (per 10,000)	#	Rate (per 10,000)	#	Rate (per 10,000)	#	Rate (per 10,000)
0 to <2 years	0	0.0	11	8.9	0	0.0	0	0.0	14	11.3	25	20.2
2 to <5 years	0	0.0	3	1.7	2	1.1	0	0.0	8	4.4	13	7.2
5 to <9 years	0	0.0	5	2.2	0	0.0	0	0.0	10	4.4	15	6.7
9 to <18 years	0	0.0	3	0.6	2	0.4	0	0.0	9	1.7	14	2.6
18 to <65 years	0	0.0	39	1.4	18	0.6	3	0.1	26	0.9	86	3.1
65 to <75 years	0	0.0	3	1.0	0	0.0	0	0.0	4	1.3	7	2.3
75+ years	0	0.0	41	14.9	0	0.0	1	0.4	2	0.7	44	16.0
Total	0	0.0	105	2.4	22	0.5	4	0.1	73	1.6	204	4.6

Source for Tables 4A & 4B: Outbreak Response Toolkit (includes cases with positive respiratory specimens received on or before *May 14, 2011*).

Population data values used to calculate rates are for June 30, 2009 and are estimated using actual population values from the Alberta Health Care Insurance Plan (AHCIP) Registration File as of March 31, 2009.

For more information on data definitions and sources see [Annex: Data Notes section at the end of this report](#)

SURVEILLANCE AND HEALTH STATUS ASSESSMENT

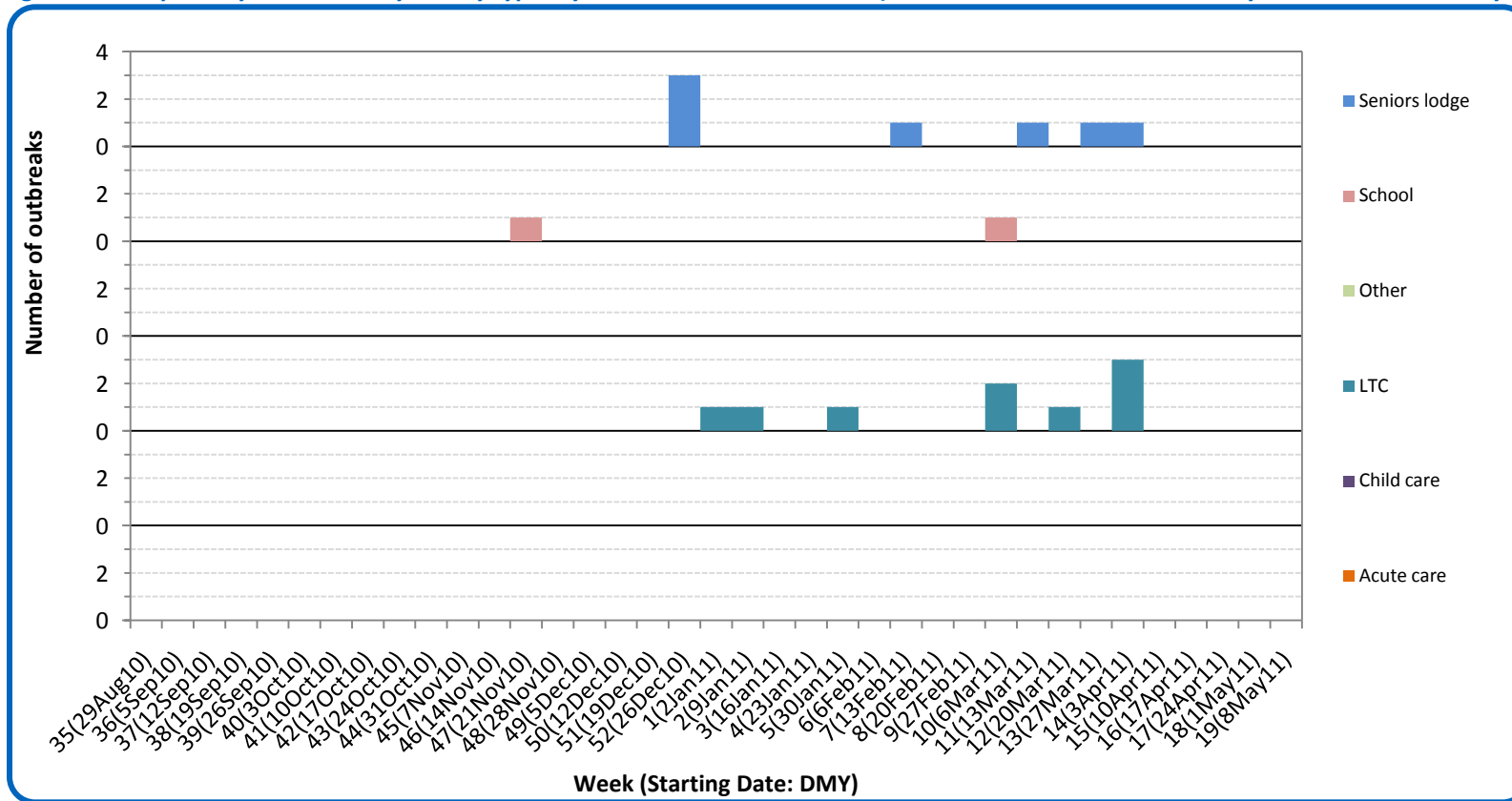
Public Health Surveillance

Report Date: May 17, 2011

An influenza report targeted to the general public is available at: <http://www.health.alberta.ca/health-info/influenza-evidence.html>

[Back to start of section](#)

Figure 4D: Respiratory outbreaks, by facility type, by onset week, Central Zone (2010-2011; school outbreaks may not have a laboratory confirmation)



Source: Alberta Outbreak Reporting Form as of 23:59 on May 14, 2011.

For more information on data definitions and sources see [Annex: Data Notes section at the end of this report](#). LTC stands for long term care facility.

SURVEILLANCE AND HEALTH STATUS ASSESSMENT

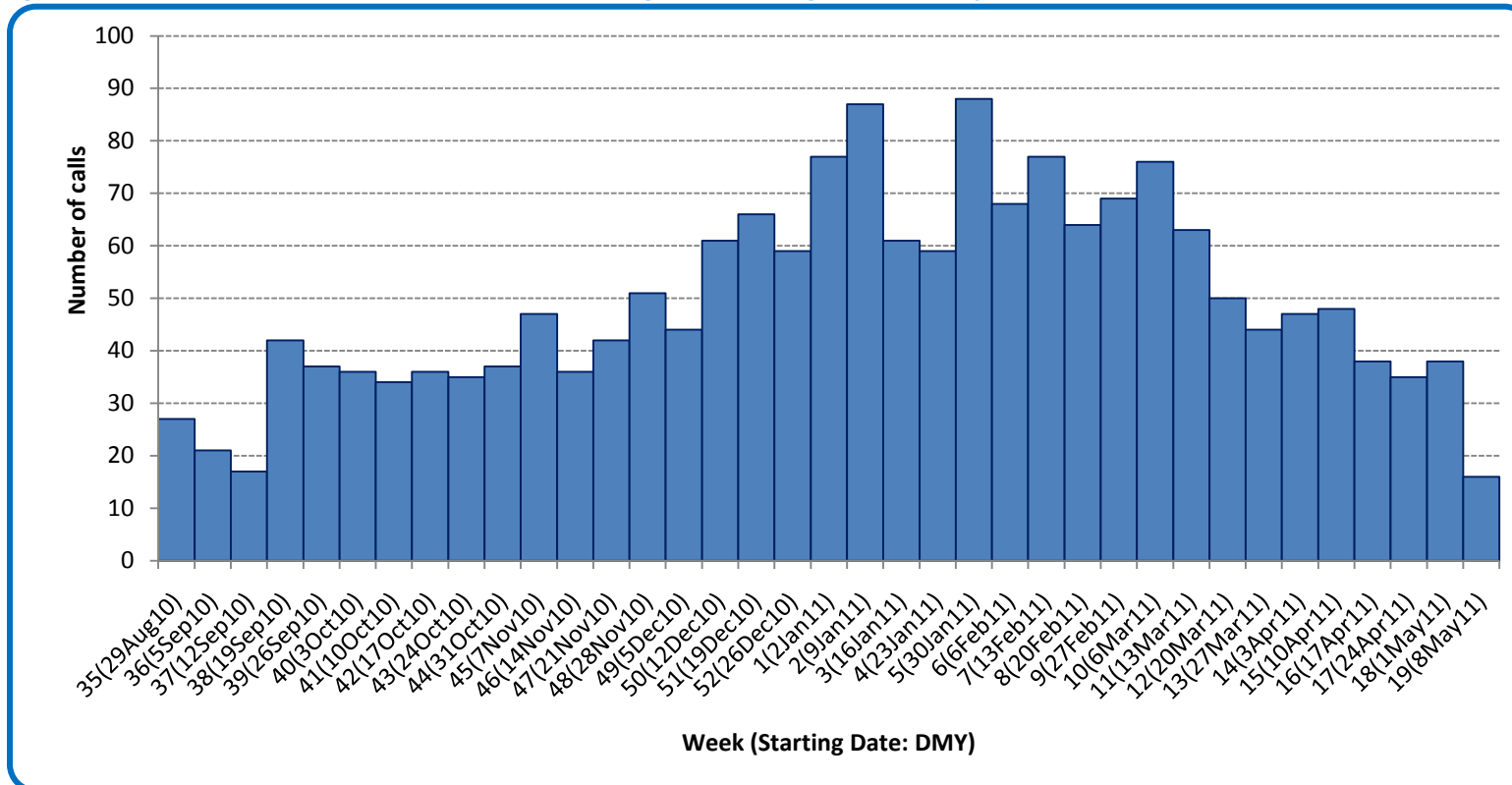
Public Health Surveillance

Report Date: May 17, 2011

An influenza report targeted to the general public is available at: <http://www.health.alberta.ca/health-info/influenza-evidence.html>

[Back to start of section](#)

Figure 4E: Number of calls to Health Link Alberta for cough or breathing difficulties, by week, Central Zone (2010-11)



Source: Sharp Focus - Health Link Alberta - via Alberta Real Time Syndromic Surveillance Net (ARTSSN) as of 23:59 on May 14, 2011. For more information on data definitions and sources see [Annex: Data Notes section at the end of this report](#)

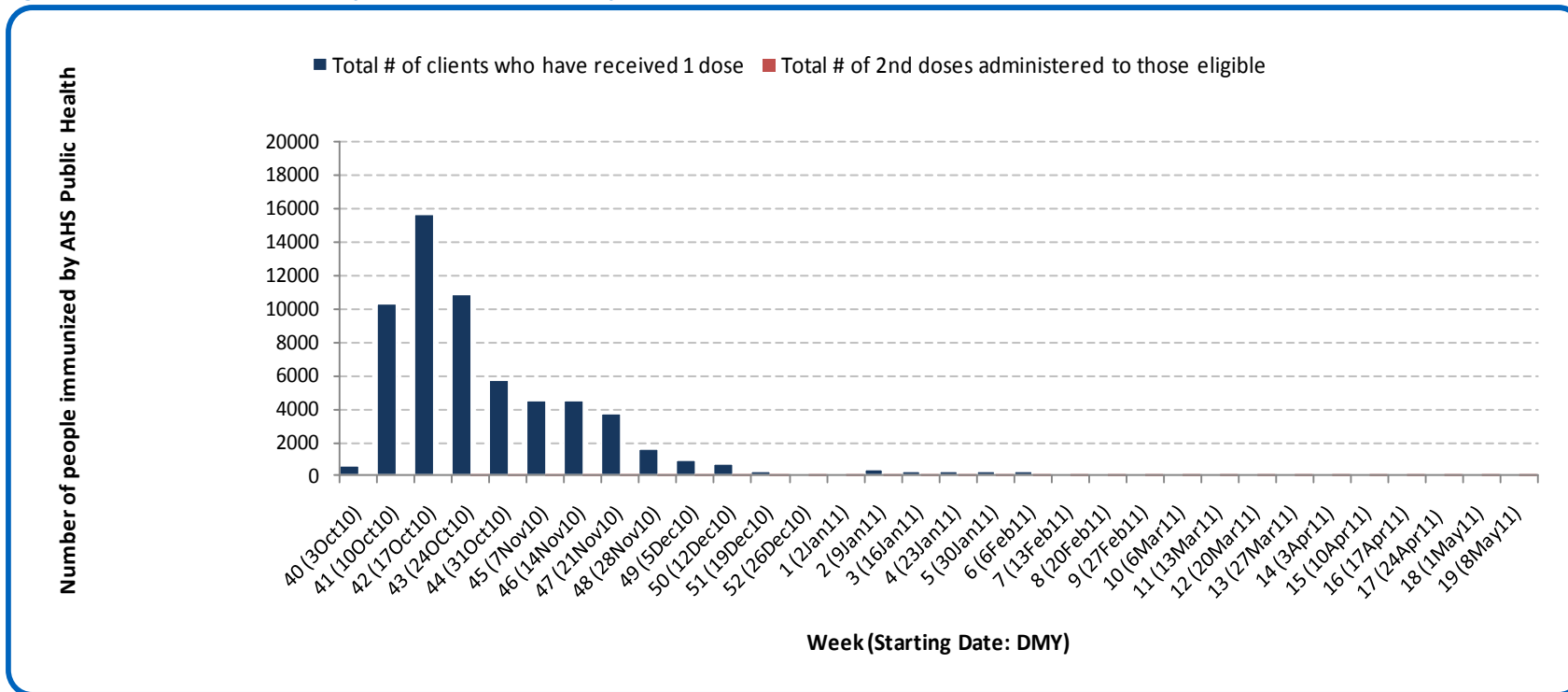
SURVEILLANCE AND HEALTH STATUS ASSESSMENT

Public Health Surveillance
Report Date: May 17, 2011

An influenza report targeted to the general public is available at: <http://www.health.alberta.ca/health-info/influenza-evidence.html>

[Back to start of section](#)

Figure 4F: Number immunized by AHS (Public Health), by week, Central Zone (2010-2011)



Source: AHS Zones (doses do not include those delivered by external providers)
 Note: Immunization coverage rates will be reported at the end of the influenza season
 For more information on data definitions and sources see [Annex: Data Notes section at the end of this report](#)

[Back to start of section](#)

Table 4C: AHS (Public Health) delivered influenza immunizations (with cumulative totals), by priority group, Central Zone (2010-2011)

Priority Group	# Immunized (Week 19 – May 8th - May 14th, 2010)	Cumulative Number Immunized (since Oct 3, 2010)
Long term care staff	0	428
Health care workers	1	2,628
Pregnant women	0	429
Residents of long term care	0	1,106
65 years of age and over	2	22,164
All children 6 months up to and including 23 months*	Dose #1	2,496
	Dose #2	1,273
All children 24 months up to and including 59 months*	Dose #1	2,322
	Dose #2	207
High risk: 5 years up to and including 8 years*	Dose #1	652
	Dose #2	24
High risk: 9 years up to and including 64 years	1	6,895
Healthy: 5 years up to and including 8 years*	Dose #1	1,991
	Dose #2	91
Healthy: 9 years up to and including 64 years	1	20,855
Total number of clients who have received 1 dose	5	61,966
Total number of 2nd doses administered to those eligible*	26	1,595

Source: AHS Zones (doses do not include those delivered by external providers)

*Children under 9 years of age who have not received at least one dose of seasonal influenza vaccine in past years require two doses, given at least four weeks apart.

Note: Immunization coverage rates will be reported at the end of the influenza season

For more information on data definitions and sources see [Annex: Data Notes section at the end of this report](#)

SURVEILLANCE AND HEALTH STATUS ASSESSMENT

Public Health Surveillance

Report Date: May 17, 2011

An influenza report targeted to the general public is available at: <http://www.health.alberta.ca/health-info/influenza-evidence.html>

[Back to start of section](#)

Table 4D: Influenza immunizations delivered by external partners, by priority group, Central Zone (Oct 3-Mar 31, 2011)

Priority Group		# Immunized Oct 3, 2010-Mar 31, 2011
Long term care staff		963
Health care workers		6,087
Pregnant women		12
Residents of long term care		1,762
65 years of age and over		4,211
All children 6 months up to and including 23 months*	Dose #1	4
	Dose #2**	0
All children 24 months up to and including 59 months*	Dose #1	4
	Dose #2**	0
High risk: 5 years up to and including 8 years*	Dose #1	8
	Dose #2**	0
High risk: 9 years up to and including 64 years		1,744
Healthy: 5 years up to and including 8 years*	Dose #1	18
	Dose #2**	2
Healthy: 9 years up to and including 64 years		4,000
Total number of clients who have received 1 dose		18,813
Total number of 2nd doses administered to those eligible*		2

Source: AHS Zones. Zones are required to report doses of seasonal influenza vaccine administered by community and other providers (e.g. physicians, pharmacists, LTC, WHS/OHS programs) twice during the influenza season. These numbers are from the second report (for doses delivered from Oct 3 to Mar 31, 2011.)

*Children under 9 years of age who have not received at least one dose of seasonal influenza vaccine in past years require two doses, given at least four weeks apart.

**In some cases, it was not possible to separate dose 1's from dose 2's. Therefore, dose 1 category may contain some 2nd doses.

Note: Immunization coverage rates will be reported at the end of the influenza season

For more information on data definitions and sources see [Annex: Data Notes section at the end of this report](#)

SURVEILLANCE AND HEALTH STATUS ASSESSMENT

Public Health Surveillance

Report Date: May 17, 2011

An influenza report targeted to the general public is available at: <http://www.health.alberta.ca/health-info/influenza-evidence.html>

SECTION 5: ZONE 4 – EDMONTON

[Back to first page](#)

Summary

With the exception of ongoing transmission of rhino-enterovirus, respiratory virus activity appears to be declining in Edmonton Zone.

Laboratory Data (see [Figure 5A](#), [Figure 5B](#), [Figure 5C](#), [Table 5A](#) & [Table 5B](#))

With only one case of influenza confirmed in Edmonton Zone in Week 19 (May 8-14, 2011), influenza activity is decreasing. Rhino-enterovirus is currently the predominant respiratory virus in Edmonton Zone. As of the end of last week (May 14, 2011), the total number of influenza cases confirmed in this part of the province this season is 476 (38.7% have been identified as influenza A (H3), 16.2% as influenza A (H1N1) 2009, 42.9% as influenza B and 2.3% as influenza A with unresolved sub-typing). The age-specific rate for confirmed influenza (all types) for infants less than 2 years of age is higher compared to other age groups, at 25.2 per 10,000 (compared to 9.6 per 10,000 or lower for other age groups).

Outbreaks (see [Figure 5D](#))

Since last weeks' update, no new respiratory outbreaks were reported or confirmed in Edmonton Zone.

Health Link Alberta Calls (see [Figure 5E](#))

The number of calls to Health Link Alberta in Edmonton Zone for cough or breathing difficulties decreased in Week 19 (May 8-14, 2011) from the previous week. With the exception of one small increase observed two weeks prior to that, this indicator has been declining since the end of February, 2011.

Emergency Department/Urgent Care Center Visits and Hospital Admissions (See [Figure 5F](#))

The number of visits and hospital admissions to nine emergency departments/urgent care centers for ILI symptoms decreased by 23% and 37%, respectively, in Week 19 (May 8-14, 2011) from the previous week. Generally, these indicators have been declining in recent weeks.

The number of visits to emergency departments/urgent care centers for cough/congestion symptoms decreased by 34% in Week 19 (May 8-14, 2011) from the previous week, while the number of hospital admissions for the same reason increased by 38%. The trend for emergency department visits has been gradually declining over the last several weeks, whereas the trend for hospital admissions has fluctuated somewhat.

SURVEILLANCE AND HEALTH STATUS ASSESSMENT

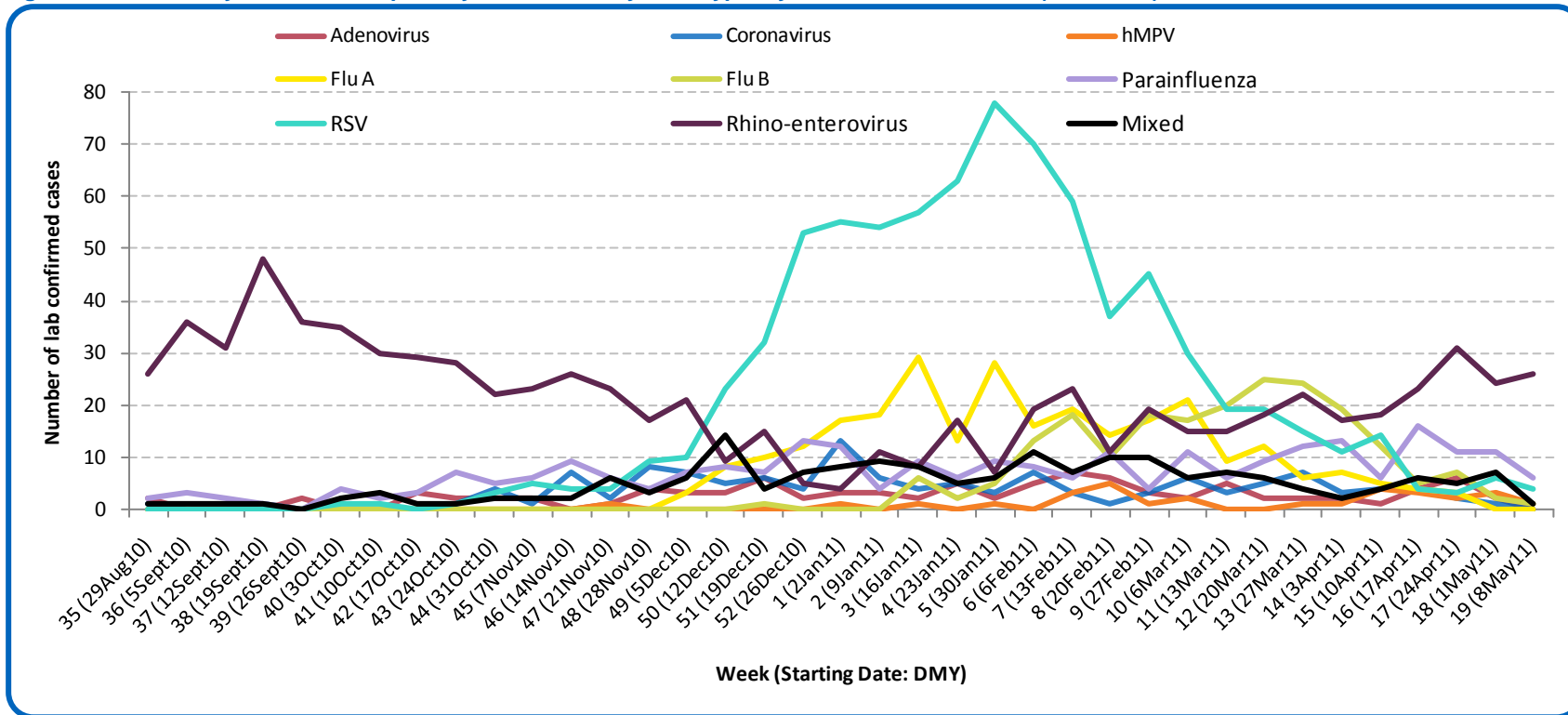
Public Health Surveillance

Report Date: May 17, 2011

An influenza report targeted to the general public is available at: <http://www.health.alberta.ca/health-info/influenza-evidence.html>

[Back to start of section](#)

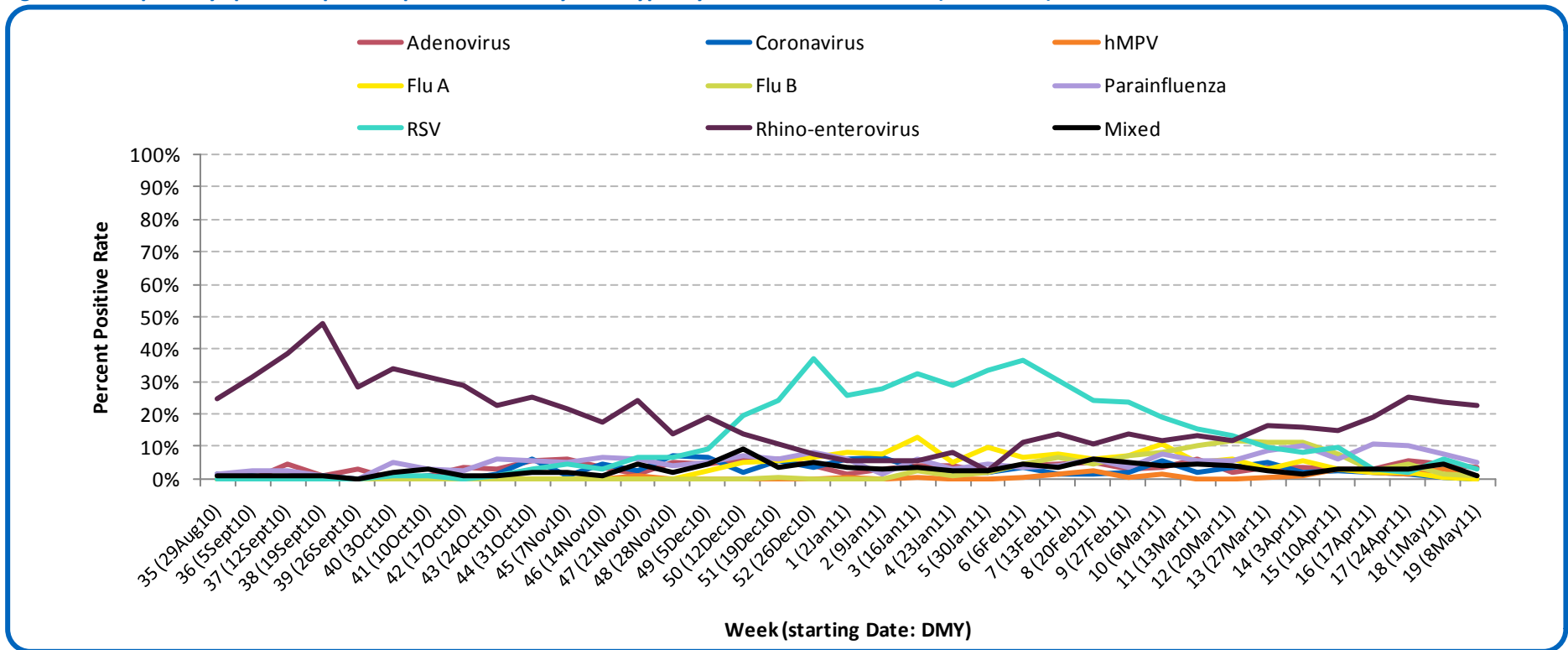
Figure 5A: Laboratory confirmed respiratory virus cases, by virus type, by week, Edmonton Zone (2010-2011)



Sources: DIAL – Provincial Laboratory and the Outbreak Response Toolkit (includes cases with positive respiratory specimens received on or before May 14, 2011). For more information on data definitions and sources see [Annex: Data Notes section at the end of this report](#)

[Back to start of section](#)

Figure 5B: Respiratory specimen percent positive rates, by virus type, by week, Edmonton Zone (2010-2011)



Source: DIAL – Provincial Laboratory (includes cases with positive respiratory specimens received on or before May 14, 2011)
For more information on data definitions and sources see [Annex: Data Notes section at the end of this report](#)

SURVEILLANCE AND HEALTH STATUS ASSESSMENT

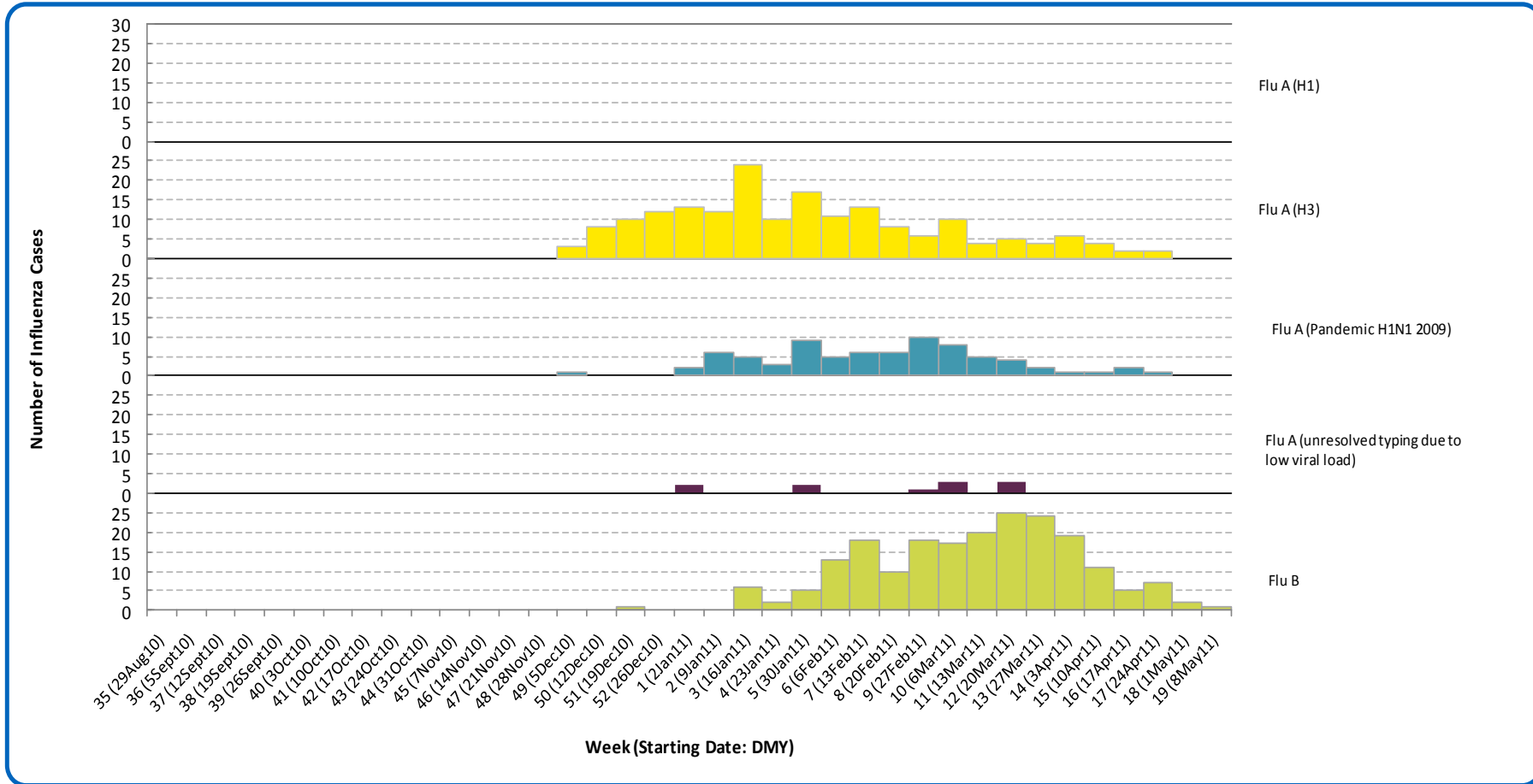
Public Health Surveillance

Report Date: May 17, 2011

An influenza report targeted to the general public is available at: <http://www.health.alberta.ca/health-info/influenza-evidence.html>

[Back to start of section](#)

Figure 5C: Laboratory confirmed influenza cases, by subtype, by week specimen received, Edmonton Zone (2010-2011)



*Note: Six specimens were positive for influenza A or B and one or more other virus type(s). Three specimens were positive for both influenza A & B.
 Source: Outbreak Response Toolkit (includes cases with positive respiratory specimens received on or before May 14, 2011).
 For more information on data definitions and sources see [Annex: Data Notes section at the end of this report](#)

SURVEILLANCE AND HEALTH STATUS ASSESSMENT

Public Health Surveillance
 Report Date: May 17, 2011

An influenza report targeted to the general public is available at: <http://www.health.alberta.ca/health-info/influenza-evidence.html>

[Back to start of section](#)

Table 5A: New influenza cases (and age specific rates), by subtype, by age group, Edmonton Zone (Week 19: May 8-14, 2011)

	Flu A (Seasonal-H1)		Flu A (Seasonal-H3)		Flu A (Pandemic H1N1 2009)		Flu A (unresolved typing due to low viral load)		Flu B		Total	
	#	Rate (per 10,000)	#	Rate (per 10,000)	#	Rate (per 10,000)	#	Rate (per 10,000)	#	Rate (per 10,000)	#	Rate (per 10,000)
0 to <2 years	0	0.0	0	0.0	0	0.0	0	0.0	0	0.0	0	0.0
2 to <5 years	0	0.0	0	0.0	0	0.0	0	0.0	0	0.0	0	0.0
5 to <9 years	0	0.0	0	0.0	0	0.0	0	0.0	1	0.2	1	0.2
9 to <18 years	0	0.0	0	0.0	0	0.0	0	0.0	0	0.0	0	0.0
18 to <65 years	0	0.0	0	0.0	0	0.0	0	0.0	0	0.0	0	0.0
65 to <75 years	0	0.0	0	0.0	0	0.0	0	0.0	0	0.0	0	0.0
75+ years	0	0.0	0	0.0	0	0.0	0	0.0	0	0.0	0	0.0
Total	0	0.0	0	0.0	0	0.0	0	0.0	1	<0.1	1	<0.1

Table 5B: Cumulative influenza cases (and age specific rates), by subtype, by age group, Edmonton Zone (Aug 29, 2010 – May 14, 2011)

	Flu A (Seasonal-H1)		Flu A (Seasonal-H3)		Flu A (Pandemic H1N1 2009)		Flu A (unresolved typing due to low viral load)		Flu B		Total	
	#	Rate (per 10,000)	#	Rate (per 10,000)	#	Rate (per 10,000)	#	Rate (per 10,000)	#	Rate (per 10,000)	#	Rate (per 10,000)
0 to <2 years	0	0.0	33	10.8	8	2.6	3	1.0	33	10.8	77	25.2
2 to <5 years	0	0.0	15	3.4	5	1.1	1	0.2	21	4.8	42	9.6
5 to <9 years	0	0.0	11	2.1	4	0.8	0	0.0	33	6.2	48	9.0
9 to <18 years	0	0.0	9	0.7	3	0.2	1	0.1	42	3.4	55	4.4
18 to <65 years	0	0.0	69	0.9	56	0.7	5	0.1	49	0.6	179	2.3
65 to <75 years	0	0.0	10	1.4	0	0.0	0	0.0	11	1.6	21	3.0
75+ years	0	0.0	37	6.1	1	0.2	1	0.2	15	2.5	54	8.9
Total	0	0.0	184	1.6	77	0.7	11	0.1	204	1.8	476	4.1

Source for tables 5A & 5B: Outbreak Response Toolkit (includes cases with positive respiratory specimens received on or before *May 14, 2011*).

Population data values used to calculate rates are for June 30, 2009 and are estimated using actual population values from the Alberta Health Care Insurance Plan (AHCIP) Registration File as of March 31, 2009.

For more information on data definitions and sources see [Annex: Data Notes section at the end of this report](#)

SURVEILLANCE AND HEALTH STATUS ASSESSMENT

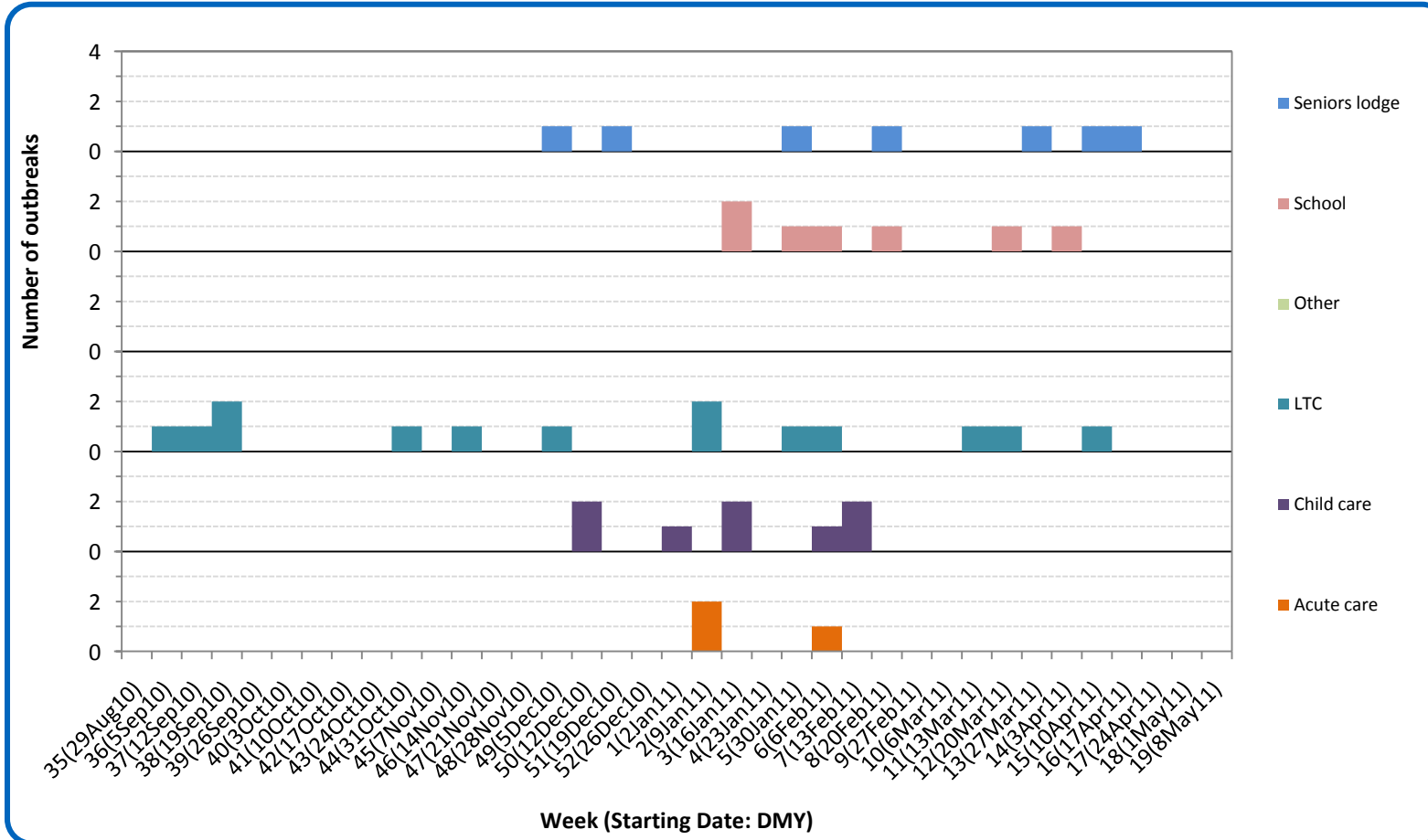
Public Health Surveillance

Report Date: May 17, 2011

An influenza report targeted to the general public is available at: <http://www.health.alberta.ca/health-info/influenza-evidence.html>

[Back to start of section](#)

Figure 5D: Respiratory outbreaks, by facility type, by onset week, Edmonton Zone (2010-2011; school outbreaks may not have a laboratory confirmation)



Source: Alberta Outbreak Reporting Form as of 23:59 on May 14, 2011. LTC stands for long term care facility. For more information on data definitions and sources see [Annex: Data Notes section at the end of this report](#)

SURVEILLANCE AND HEALTH STATUS ASSESSMENT

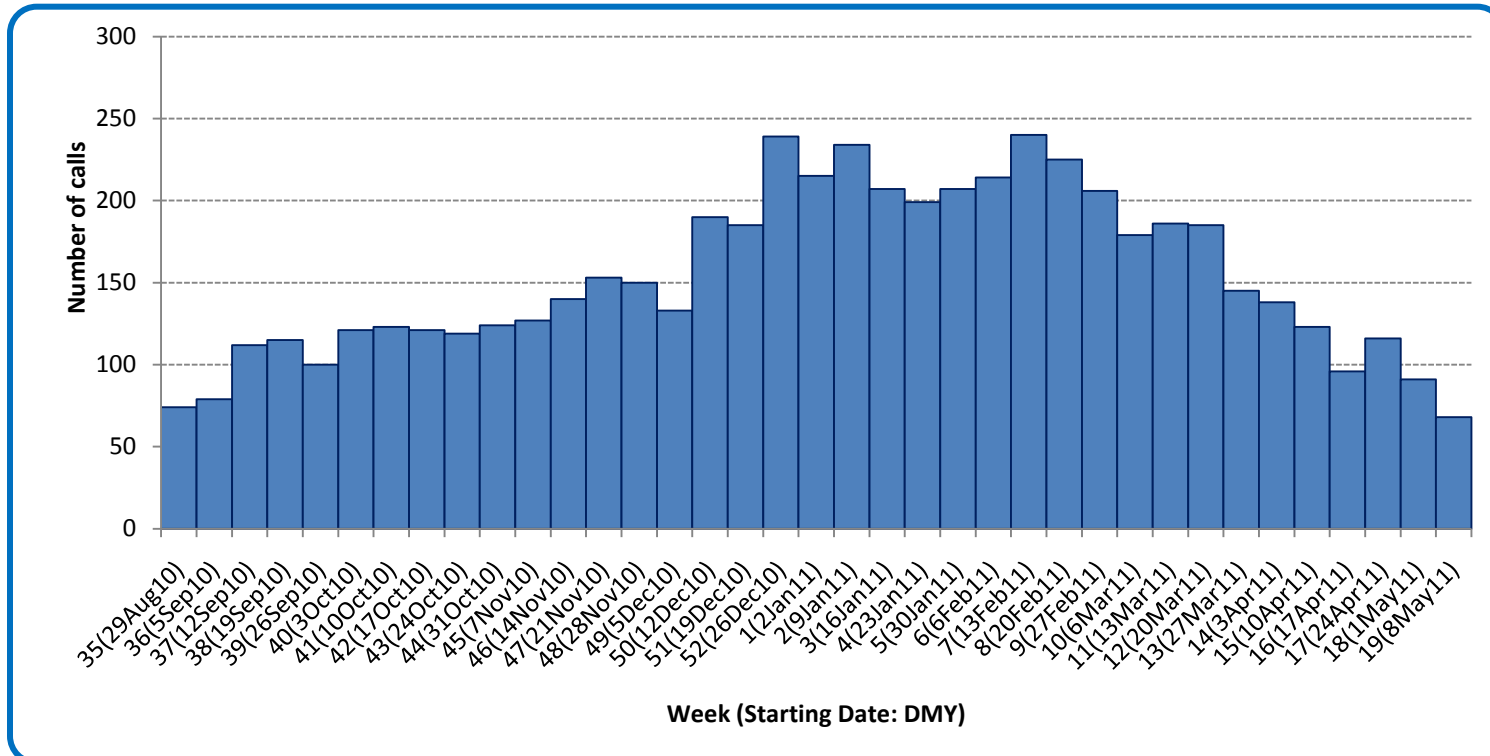
Public Health Surveillance

Report Date: May 17, 2011

An influenza report targeted to the general public is available at: <http://www.health.alberta.ca/health-info/influenza-evidence.html>

[Back to start of section](#)

Figure 5E: Number of calls to Health Link Alberta for cough or breathing difficulties, by week, Edmonton Zone (2010-11)



Source: Sharp Focus - Health Link Alberta - via Alberta Real Time Syndromic Surveillance Net (ARTSSN) as of 23:59 on May 14, 2011. For more information on data definitions and sources see [Annex: Data Notes section at the end of this report](#)

SURVEILLANCE AND HEALTH STATUS ASSESSMENT

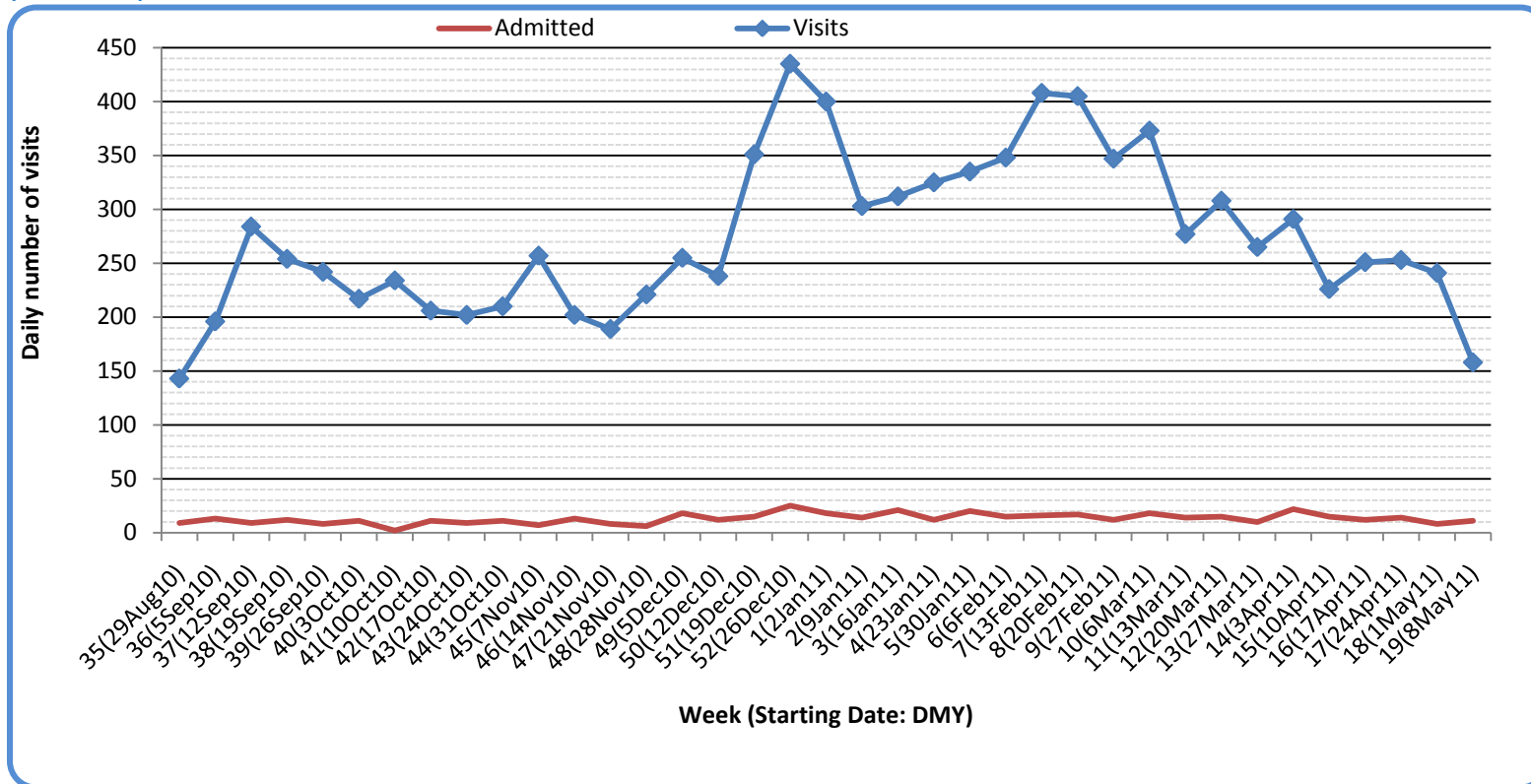
Public Health Surveillance

Report Date: May 17, 2011

An influenza report targeted to the general public is available at: <http://www.health.alberta.ca/health-info/influenza-evidence.html>

[Back to start of section](#)

Figure 5F: Visits to emergency departments/urgent care centers for cough/congestion and admissions to hospitals, Edmonton Zone, by visit week (2010-2011)



Source: Alberta Real Time Syndromic Surveillance (ARTSSN) as of 23:59 on May 14, 2011.
For more information on data definitions and sources see [Annex: Data Notes section at the end of this report](#)

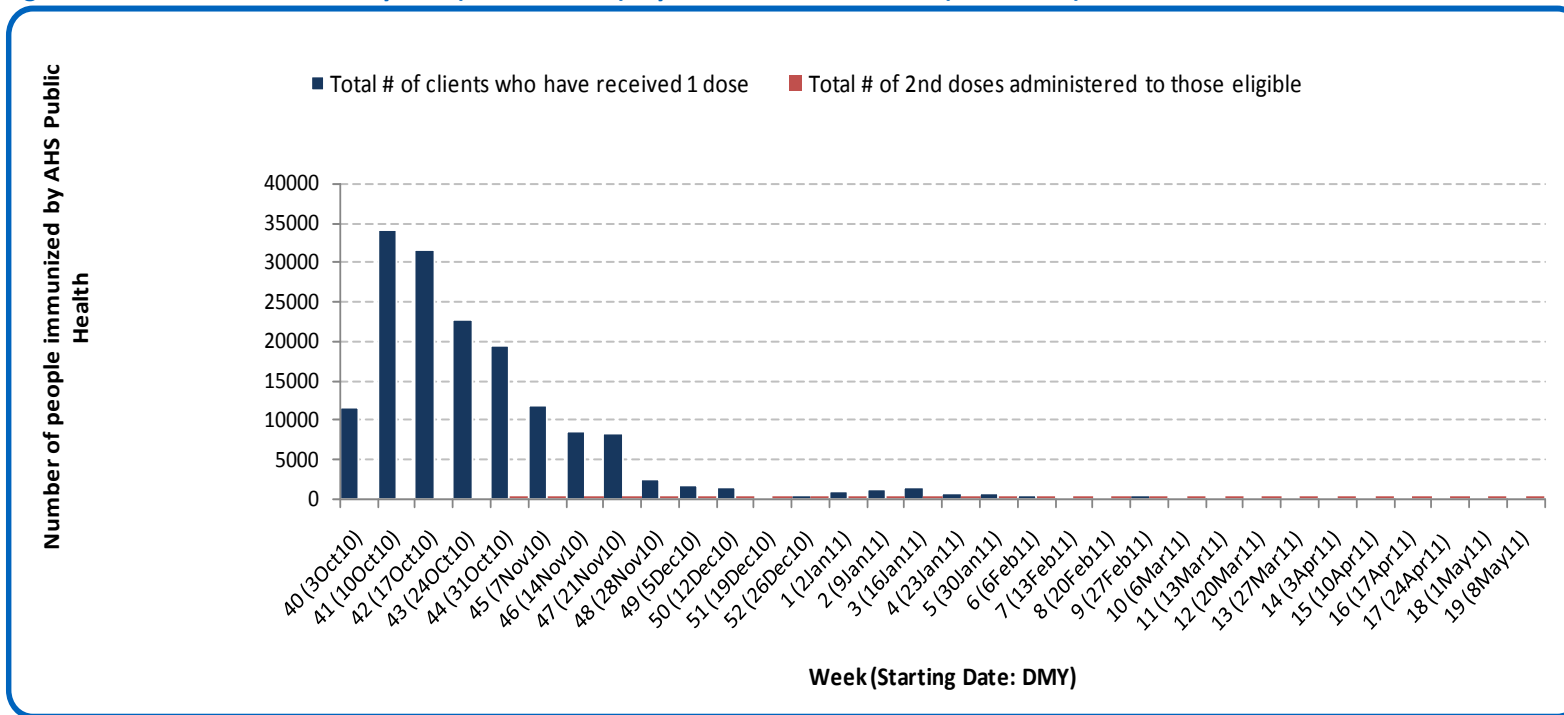
SURVEILLANCE AND HEALTH STATUS ASSESSMENT

Public Health Surveillance
Report Date: May 17, 2011

An influenza report targeted to the general public is available at: <http://www.health.alberta.ca/health-info/influenza-evidence.html>

[Back to start of section](#)

Figure 5G: Number immunized by AHS (Public Health), by week, Edmonton Zone (2010-2011)



Source: AHS Zones (doses do not include those delivered by external providers)
 Note: Immunization coverage rates will be reported at the end of the influenza season
 For more information on data definitions and sources see [Annex: Data Notes section at the end of this report](#)

SURVEILLANCE AND HEALTH STATUS ASSESSMENT

Public Health Surveillance

Report Date: May 17, 2011

An influenza report targeted to the general public is available at: <http://www.health.alberta.ca/health-info/influenza-evidence.html>

[Back to start of section](#)

Table 5C: AHS (Public Health) delivered influenza immunizations (with cumulative totals), by priority group, Edmonton Zone (2010-2011)

Priority Group	# Immunized (Week 19 – May 8th - May 14th, 2010)	Cumulative Number Immunized (since Oct 3, 2010)
Long term care staff	0	332
Health care workers	1	4,832
Pregnant women	0	1,455
Residents of long term care	1	1,052
65 years of age and over	6	48,534
All children 6 months up to and including 23 months*	Dose #1	6,851
	Dose #2	2,476
All children 24 months up to and including 59 months*	Dose #1	7,217
	Dose #2	435
High risk: 5 years up to and including 8 years*	Dose #1	1,361
	Dose #2	39
High risk: 9 years up to and including 64 years	0	17,199
Healthy: 5 years up to and including 8 years*	Dose #1	5,506
	Dose #2	185
Healthy: 9 years up to and including 64 years	28	68,251
Total number of clients who have received 1 dose	39	162,590
Total number of 2nd doses administered to those eligible*	30	3,135

Source: AHS Zones (doses do not include those delivered by external providers)

*Children under 9 years of age who have not received at least one dose of seasonal influenza vaccine in past years require two doses, given at least four weeks apart.

Note: Immunization coverage rates will be reported at the end of the influenza season

For more information on data definitions and sources see [Annex: Data Notes section at the end of this report](#)

SURVEILLANCE AND HEALTH STATUS ASSESSMENT

Public Health Surveillance

Report Date: May 17, 2011

An influenza report targeted to the general public is available at: <http://www.health.alberta.ca/health-info/influenza-evidence.html>

[Back to start of section](#)

Table 5D: Influenza immunizations delivered by external partners, by priority group, Edmonton Zone (Oct 3-Mar 31, 2011)

Priority Group	# Immunized (Week 18 – May 1st - May 7th, 2010)	
Long term care staff	5,483	
Health care workers	17,542	
Pregnant women	366	
Residents of long term care	3,558	
65 years of age and over	23,567	
All children 6 months up to and including 23 months*	Dose #1	393
	Dose #2**	73
All children 24 months up to and including 59 months*	Dose #1	614
	Dose #2**	29
High risk: 5 years up to and including 8 years*	Dose #1	1,075
	Dose #2**	2
High risk: 9 years up to and including 64 years	13,508	
Healthy: 5 years up to and including 8 years*	Dose #1	1,283
	Dose #2**	7
Healthy: 9 years up to and including 64 years	31,459	
Total number of clients who have received 1 dose	98,848	
Total number of 2nd doses administered to those eligible*	111	

Source: AHS Zones. Zones are required to report doses of seasonal influenza vaccine administered by community and other providers (e.g. physicians, pharmacists, LTC, WHS/OHS programs) twice during the influenza season. These numbers are from the second report (for doses delivered from Oct 3 to Mar 31, 2011.)

*Children under 9 years of age who have not received at least one dose of seasonal influenza vaccine in past years require two doses, given at least four weeks apart.

**In some cases, it was not possible to separate dose 1's from dose 2's. Therefore, dose 1 category may contain some 2nd doses.

Note: Immunization coverage rates will be reported at the end of the influenza season

For more information on data definitions and sources see [Annex: Data Notes section at the end of this report](#)

SURVEILLANCE AND HEALTH STATUS ASSESSMENT

Public Health Surveillance

Report Date: May 17, 2011

An influenza report targeted to the general public is available at: <http://www.health.alberta.ca/health-info/influenza-evidence.html>

SECTION 6: ZONE 5 – NORTH

[Back to first page](#)

Summary

Despite continuing transmission of rhino-enterovirus, respiratory virus activity is generally declining in North Zone.

Laboratory Data (see [Figure 6A](#), [Figure 6B](#), [Figure 6C](#), [Table 6A](#) & [Table 6B](#))

Influenza activity is declining in North Zone however rhino-enterovirus continues to circulate. So far this season, 292 cases of influenza have been confirmed in North Zone (27.1% have been identified as influenza A (H3), 27.3% as influenza A (H1N1) 2009, 45.2% as influenza B and 0.3% as influenza A with unresolved sub-typing). At this point in time, the age specific rate for confirmed influenza (all types) among infants under the age of 2 years is much higher than the rate for any other age group (42.1 per 10,000 compared to 17.7 per 10,000 or lower).

Outbreaks (see [Figure 6D](#))

There have been no new respiratory outbreaks confirmed or reported in North Zone.

Health Link Alberta Calls (see [Figure 6E](#))

The number of calls to Health Link Alberta by residents of North Zone for cough or breathing difficulties decreased quite sharply in Week 19 (May 8-14, 2011) compared to the previous week, bringing it to the lowest level it has been this season.

Emergency Department/Urgent Care Center Visits and Hospital Admissions

There are no data available for the North Zone.

SURVEILLANCE AND HEALTH STATUS ASSESSMENT

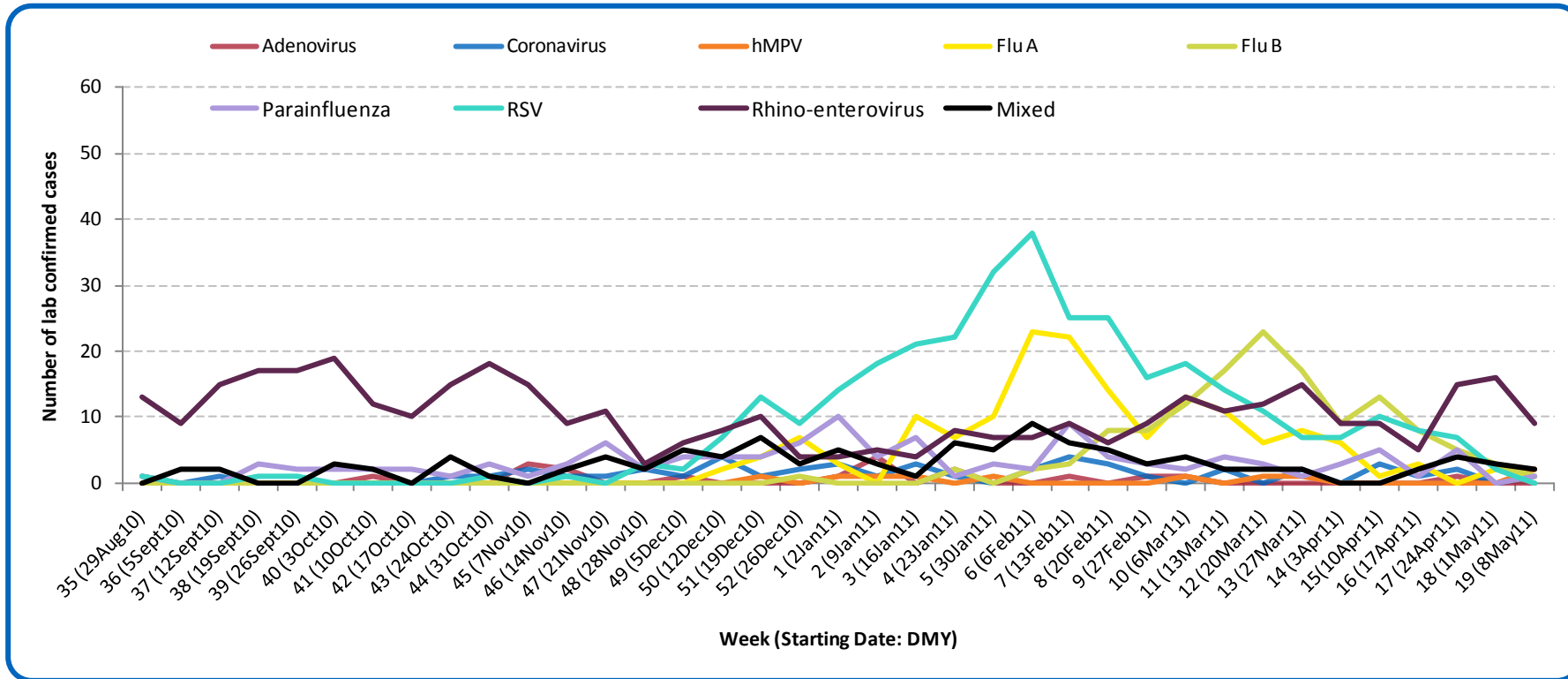
Public Health Surveillance

Report Date: May 17, 2011

An influenza report targeted to the general public is available at: <http://www.health.alberta.ca/health-info/influenza-evidence.html>

[Back to start of section](#)

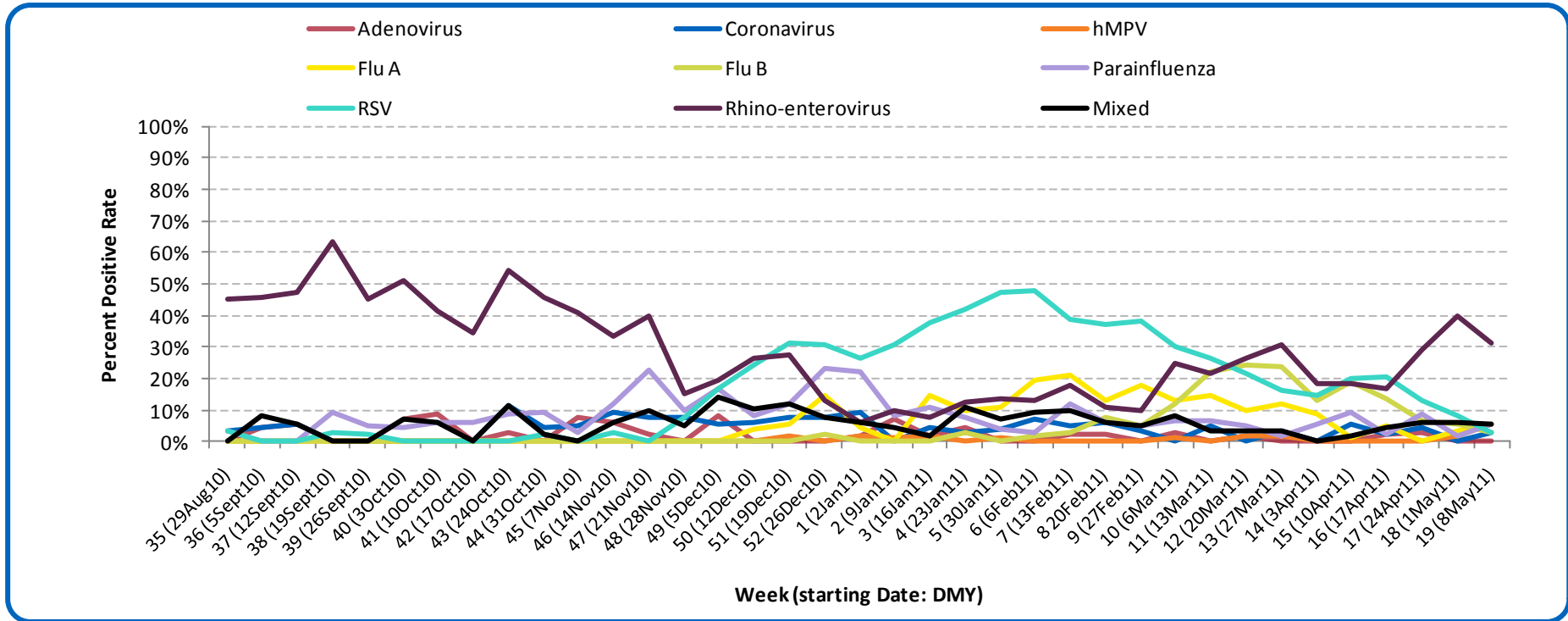
Figure 6A: Laboratory confirmed respiratory virus cases, by virus type, by week, North Zone (2010-2011)



Sources: DIAL – Provincial Laboratory and the Outbreak Response Toolkit (includes cases with positive respiratory specimens received on or before May 14, 2011). For more information on data definitions and sources see [Annex: Data Notes section at the end of this report](#)

[Back to start of section](#)

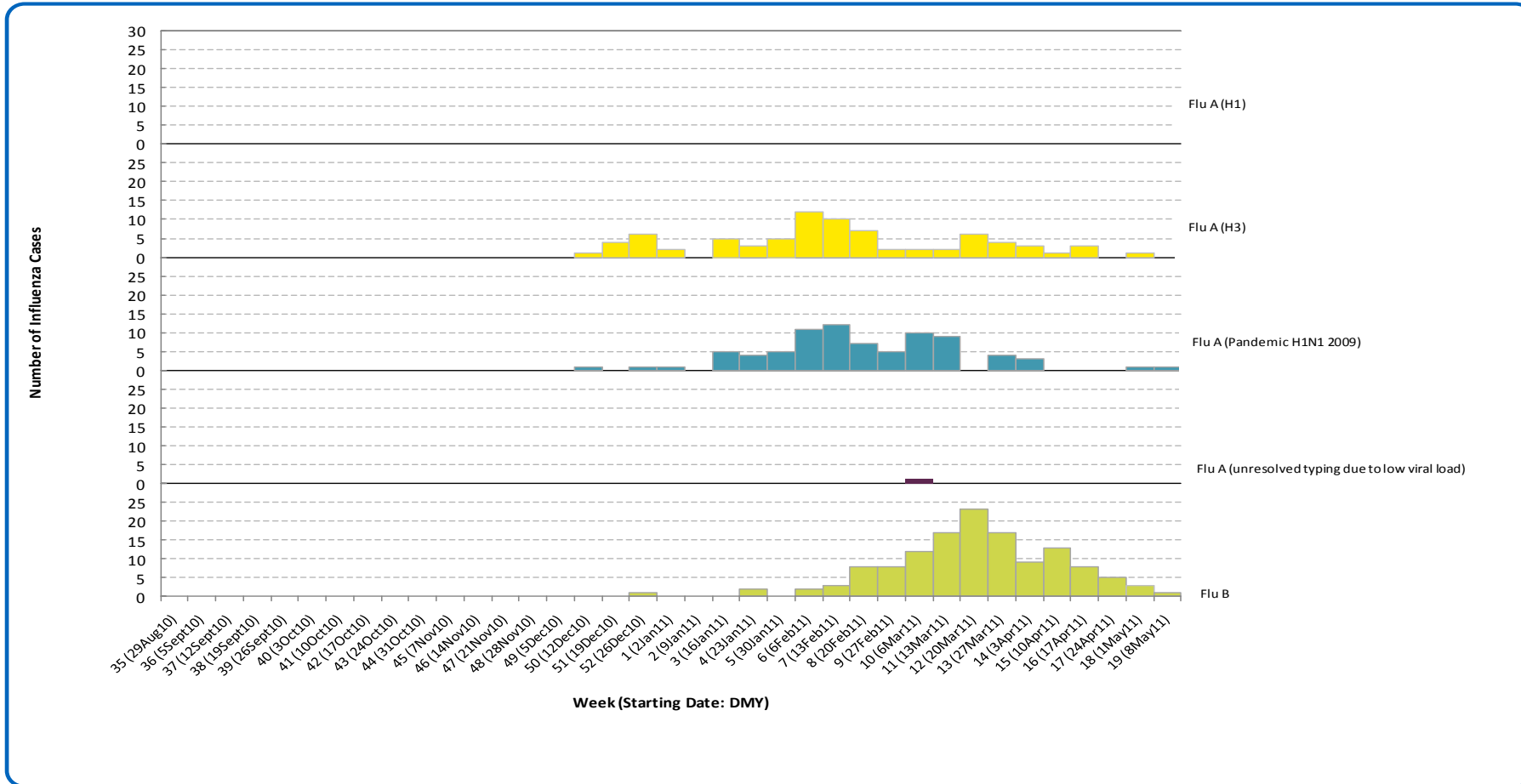
Figure 6B: Respiratory specimen percent positive rates, by virus type, by week, North Zone (2010-2011)



Source: DIAL – Provincial Laboratory (includes cases with positive respiratory specimens received on or before May 14, 2011)
For more information on data definitions and sources see [Annex: Data Notes section at the end of this report](#)

[Back to start of section](#)

Figure 6C: Laboratory confirmed influenza cases, by subtype, by week specimen received, North Zone (2010-2011)



*Note: Eight specimens were positive for influenza A and one or more other virus type(s).

Source: Outbreak Response Toolkit (includes cases with positive respiratory specimens received on or before May 14, 2011).

For more information on data definitions and sources see [Annex: Data Notes section at the end of this report](#)

SURVEILLANCE AND HEALTH STATUS ASSESSMENT

Public Health Surveillance

Report Date: May 17, 2011

An influenza report targeted to the general public is available at: <http://www.health.alberta.ca/health-info/influenza-evidence.html>

[Back to start of section](#)

Table 6A: New influenza cases (and age specific rates), by subtype, by age group, North Zone (Week 19: May 8-14, 2011)

	Flu A (Seasonal-H1)		Flu A (Seasonal-H3)		Flu A (Pandemic H1N1 2009)		Flu A (unresolved typing due to low viral load)		Flu B		Total	
	#	Rate (per 10,000)	#	Rate (per 10,000)	#	Rate (per 10,000)	#	Rate (per 10,000)	#	Rate (per 10,000)	#	Rate (per 10,000)
0 to <2 years	0	0.0	0	0.0	1	0.7	0	0.0	1	0.7	2	1.4
2 to <5 years	0	0.0	0	0.0	0	0.0	0	0.0	0	0.0	0	0.0
5 to <9 years	0	0.0	0	0.0	0	0.0	0	0.0	0	0.0	0	0.0
9 to <18 years	0	0.0	0	0.0	0	0.0	0	0.0	0	0.0	0	0.0
18 to <65 years	0	0.0	0	0.0	0	0.0	0	0.0	0	0.0	0	0.0
65 to <75 years	0	0.0	0	0.0	0	0.0	0	0.0	0	0.0	0	0.0
75+ years	0	0.0	0	0.0	0	0.0	0	0.0	0	0.0	0	0.0
Total	0	0.0	0	0.0	1	<0.1	0	0.0	1	<0.1	2	<0.1

Table 6B: Cumulative influenza cases (and age specific rates), by subtype, by age group, North Zone (Aug 29, 2010-May 14, 2011)

	Flu A (Seasonal-H1)		Flu A (Seasonal-H3)		Flu A (Pandemic H1N1 2009)		Flu A (unresolved typing due to low viral load)		Flu B		Total	
	#	Rate (per 10,000)	#	Rate (per 10,000)	#	Rate (per 10,000)	#	Rate (per 10,000)	#	Rate (per 10,000)	#	Rate (per 10,000)
0 to <2 years	0	0.0	15	10.5	18	12.6	1	0.7	26	18.2	60	42.1
2 to <5 years	0	0.0	9	4.4	4	2.0	0	0.0	23	11.3	36	17.7
5 to <9 years	0	0.0	11	4.5	5	2.1	0	0.0	13	5.3	29	11.9
9 to <18 years	0	0.0	9	1.6	11	2.0	0	0.0	18	3.2	38	6.8
18 to <65 years	0	0.0	27	1.0	42	1.5	0	0.0	46	1.6	115	4.1
65 to <75 years	0	0.0	2	0.9	0	0.0	0	0.0	6	2.7	8	3.6
75+ years	0	0.0	6	3.8	0	0.0	0	0.0	0	0.0	6	3.8
Total	0	0.0	79	1.8	80	1.8	1	<0.1	132	3.0	292	6.7

Source for Tables 6A & 6B: Outbreak Response Toolkit (includes cases with positive respiratory specimens received on or before *May 14, 2011*).

Population data values used to calculate rates are for June 30, 2009 and are estimated using actual population values from the Alberta Health Care Insurance Plan (AHCIP) Registration File as of March 31, 2009.

For more information on data definitions and sources see [Annex: Data Notes section at the end of this report](#)

SURVEILLANCE AND HEALTH STATUS ASSESSMENT

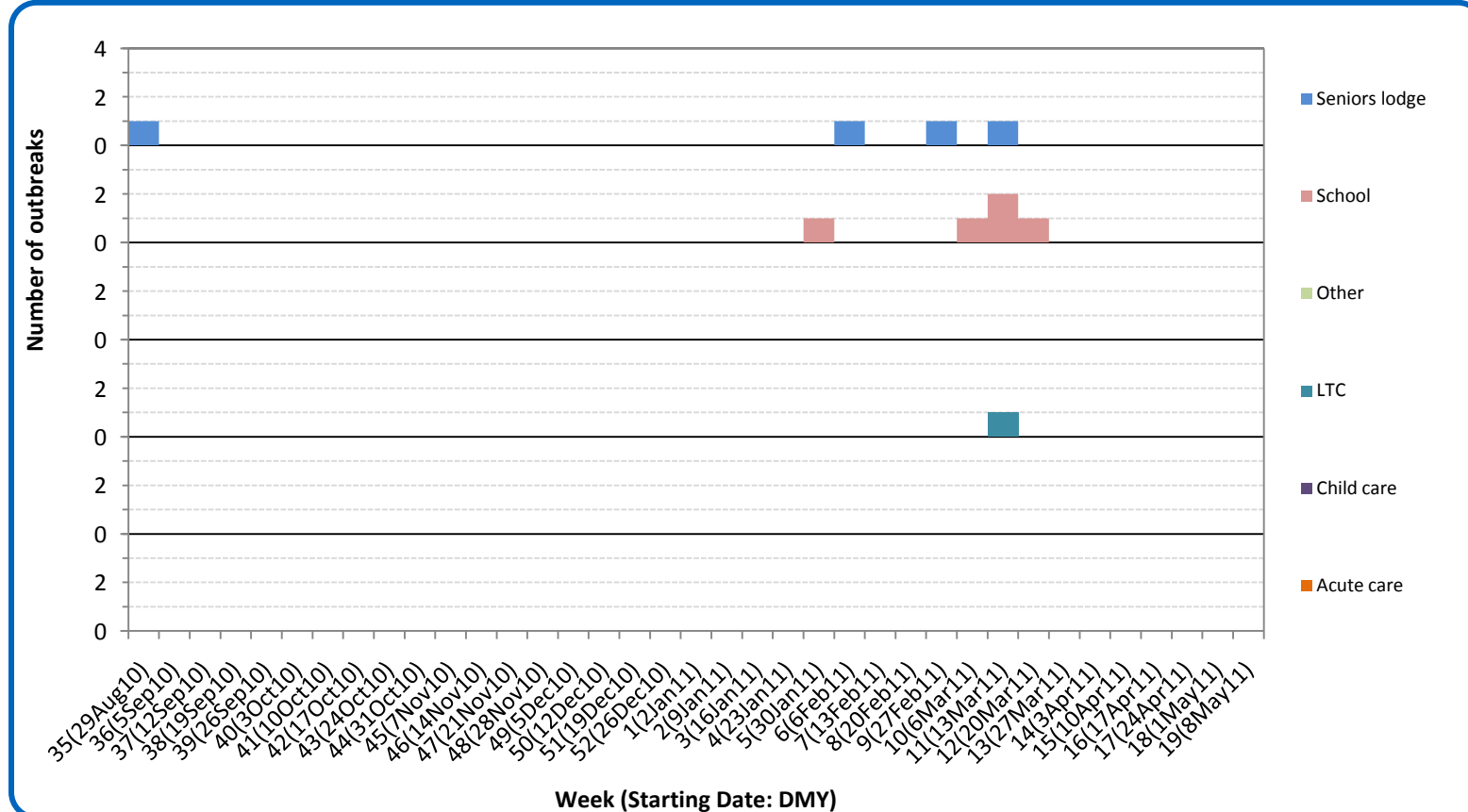
Public Health Surveillance

Report Date: May 17, 2011

An influenza report targeted to the general public is available at: <http://www.health.alberta.ca/health-info/influenza-evidence.html>

[Back to start of section](#)

Figure 6D: Respiratory outbreaks, by facility type, by onset week, North Zone (2010-2011; school outbreaks may not have a laboratory confirmation)



Source: Alberta Outbreak Reporting Form as of 23:59 on May 14, 2011. LTC stands for long term care facility. For more information on data definitions and sources see [Annex: Data Notes section at the end of this report](#)

SURVEILLANCE AND HEALTH STATUS ASSESSMENT

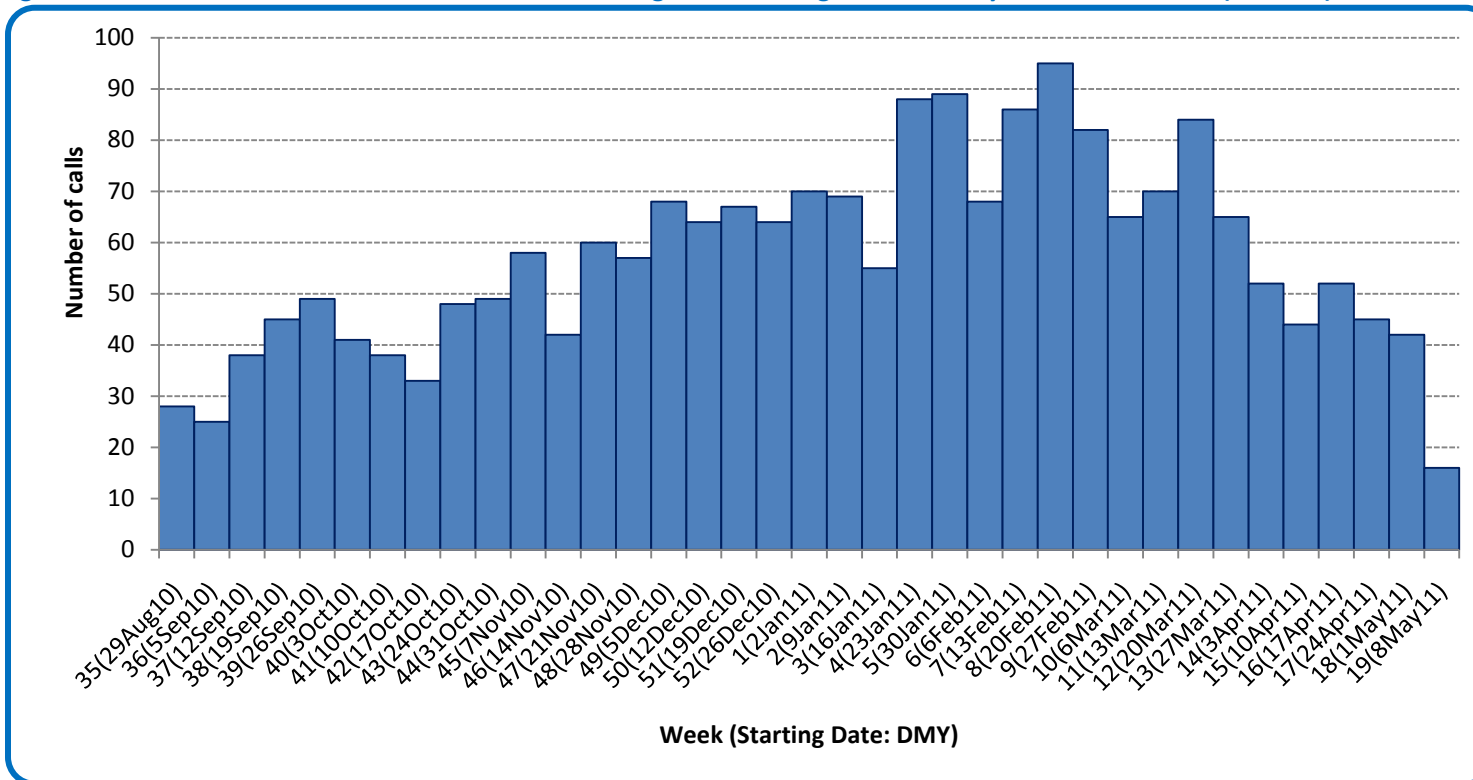
Public Health Surveillance

Report Date: May 17, 2011

An influenza report targeted to the general public is available at: <http://www.health.alberta.ca/health-info/influenza-evidence.html>

[Back to start of section](#)

Figure 6E: Number of calls to Health Link Alberta for cough or breathing difficulties, by week, North Zone (2010-11)



Source: Sharp Focus - Health Link Alberta - via Alberta Real Time Syndromic Surveillance Net (ARTSSN) as of 23:59 on May 14, 2011. For more information on data definitions and sources see [Annex: Data Notes section at the end of this report](#)

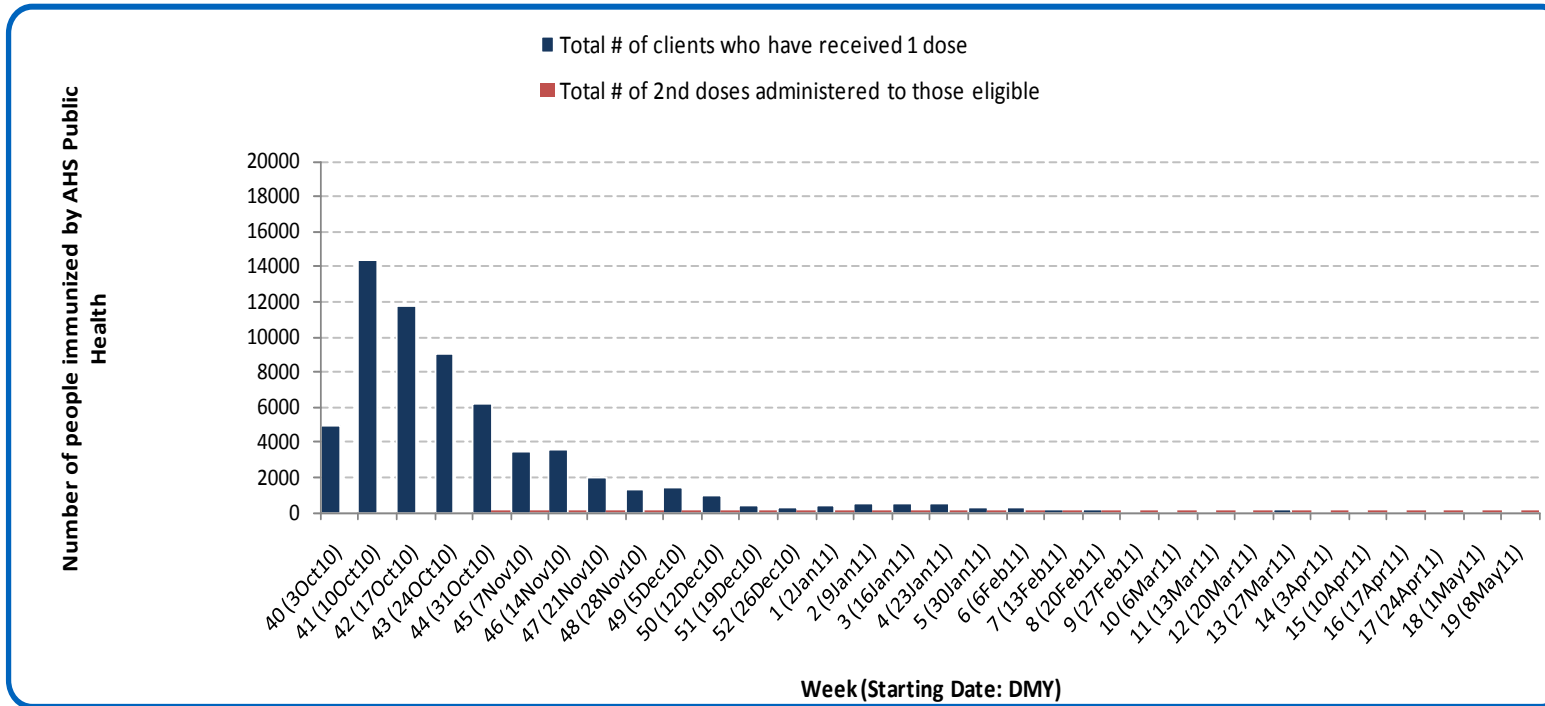
SURVEILLANCE AND HEALTH STATUS ASSESSMENT

Public Health Surveillance
Report Date: May 17, 2011

An influenza report targeted to the general public is available at: <http://www.health.alberta.ca/health-info/influenza-evidence.html>

[Back to start of section](#)

Figure 6F: Number immunized by AHS (Public Health), by week, North Zone (2010-2011)



Source: AHS Zones (doses do not include those delivered by external providers)
 Note: Immunization coverage rates will be reported at the end of the influenza season
 For more information on data definitions and sources see [Annex: Data Notes section at the end of this report](#)

[Back to start of section](#)

Table 6C: AHS (Public Health) delivered influenza immunizations (with cumulative totals), by priority group, North Zone (2010-2011)

Priority Group		# Immunized (Week 19 – May 8th - May 14th, 2010)	Cumulative Number Immunized (since Oct 3, 2010)
Long term care staff		0	820
Health care workers		0	4,722
Pregnant women		0	573
Residents of long term care		0	1,249
65 years of age and over		0	15,811
All children 6 months up to and including 23 months*	Dose #1	0	2,455
	Dose #2	9	965
All children 24 months up to and including 59 months*	Dose #1	0	2,569
	Dose #2	1	147
High risk: 5 years up to and including 8 years*	Dose #1	0	964
	Dose #2	0	12
High risk: 9 years up to and including 64 years		0	7,879
Healthy: 5 years up to and including 8 years*	Dose #1	0	2,483
	Dose #2	0	63
Healthy: 9 years up to and including 64 years		0	23,650
Total number of clients who have received 1 dose		0	63,175
Total number of 2nd doses administered to those eligible*		10	1,187

Source: AHS Zones (doses do not include those delivered by external providers)

*Children under 9 years of age who have not received at least one dose of seasonal influenza vaccine in past years require two doses, given at least four weeks apart.

Note: Immunization coverage rates will be reported at the end of the influenza season

For more information on data definitions and sources see [Annex: Data Notes section at the end of this report](#)

SURVEILLANCE AND HEALTH STATUS ASSESSMENT

Public Health Surveillance

Report Date: May 17, 2011

An influenza report targeted to the general public is available at: <http://www.health.alberta.ca/health-info/influenza-evidence.html>

[Back to start of section](#)

Table 6D: Influenza immunizations delivered by external partners, by priority group, North Zone (Oct 3-Mar 31, 2011)

Priority Group	# Immunized Oct 3, 2010-Mar 31, 2011	
Long term care staff	37	
Health care workers	176	
Pregnant women	11	
Residents of long term care	47	
65 years of age and over	357	
All children 6 months up to and including 23 months*	Dose #1	0
	Dose #2**	0
All children 24 months up to and including 59 months*	Dose #1	1
	Dose #2**	0
High risk: 5 years up to and including 8 years*	Dose #1	0
	Dose #2**	0
High risk: 9 years up to and including 64 years	704	
Healthy: 5 years up to and including 8 years*	Dose #1	2
	Dose #2**	0
Healthy: 9 years up to and including 64 years	4,977	
Total number of clients who have received 1 dose	6,312	
Total number of 2nd doses administered to those eligible*	0	

Source: AHS Zones. Zones are required to report doses of seasonal influenza vaccine administered by community and other providers (e.g. physicians, pharmacists, LTC, WHS/OHS programs) twice during the influenza season. These numbers are from the second report (for doses delivered from Oct 3 to Mar 31, 2011.)

*Children under 9 years of age who have not received at least one dose of seasonal influenza vaccine in past years require two doses, given at least four weeks apart.

**In some cases, it was not possible to separate dose 1's from dose 2's. Therefore, dose 1 category may contain some 2nd doses.

Note: Immunization coverage rates will be reported at the end of the influenza season

For more information on data definitions and sources see [Annex: Data Notes section at the end of this report](#)

SURVEILLANCE AND HEALTH STATUS ASSESSMENT

Public Health Surveillance

Report Date: May 17, 2011

An influenza report targeted to the general public is available at: <http://www.health.alberta.ca/health-info/influenza-evidence.html>

ANNEX: DATA NOTES

[Back to first page](#)

LABORATORY

Information on laboratory confirmed respiratory virus activity in Alberta is based on data from 2 sources:

- 1) Non-influenza viruses: The Alberta Provincial Public Health Laboratory DIAL system (Data Integration for Alberta Laboratories) – a specimen based system. Cases are determined by rationalizing samples from the same patient with the same virus identified within a 30-day period. The information (i.e. received date) from the first sample identifying the identical virus is used in this report.
- 2) Influenza viruses: The Alberta influenza Case Management System – an influenza case based system.

Both data sources are web-based applications supported by the Canadian Network for Public Health Intelligence.

The data in this report are based on specimens obtained from residents of Alberta; according to the date the specimen was received by the laboratory.

Definition for “mixed” – a single sample where multiple viral organisms were isolated.

INFLUENZA-LIKE ILLNESS

Four data sources are used to provide information on utilization of primary and acute care services by people with Influenza-Like Illness (ILI). *Caution: Each source uses potentially different definitions of ILI.*

1. Primary care summaries are obtained from the TARRANT system. Patients seen by TARRANT physicians may not be representative of the general population. Reported ILI cases represent people seen by TARRANT physicians, according to the date seen by the physician. The percentage of ILI represents the proportion of patients with ILI of all patients seen by the physician.
2. In addition to reporting visits of patients with ILI, TARRANT physicians also report visits with lower respiratory tract infections (LRTI). Each visit is recorded only once, even if a patient has symptoms consistent with ILI and LRTI. The combined ILI- and LRTI-related visits are therefore suggestive of overall respiratory infections in the patient population.
3. Information on visits for ILI in Emergency Departments (ED) and urgent care centers are provided by the Alberta Real Time Syndromic Surveillance Net (ARTSSN) data repository. ILI designation is based on patients being screened in emergency departments with an ILI screening tool. The primary purpose of the ILI screening tool is to implement appropriate infection control measures. The original data sources fed to the ARTSSN data repository are EDIS (Emergency Department Information System) for the Edmonton Zone and REDIS for the Calgary Zone.
4. Health Link Alberta is a 24 hour a day, 7 day a week nurse telephone advice and health information service that provides the public with advice and information about health symptoms and concerns. The original data source for the daily calls to Health Link Alberta for ILI, cough, and breathing difficulties is the Health Link database called Sharp Focus.

SURVEILLANCE AND HEALTH STATUS ASSESSMENT

Public Health Surveillance

Report Date: May 17, 2011

An influenza report targeted to the general public is available at: <http://www.health.alberta.ca/health-info/influenza-evidence.html>

OUTBREAKS

[Back to first page](#)

Upon notification of an outbreak, the *Alberta Health & Wellness/Alberta Health Services* Outbreak Reporting Form (Fillable PDF) is completed by Zone Public Health investigators and sent to *Alberta Health & Wellness and AHS Public Health Surveillance*. The form includes information about the type and location of the outbreak, type of facility, and the causative organism (confirmed or suspected). There may be a delay between the reporting of an outbreak and the identification of the organism. This report includes only those outbreaks that are laboratory confirmed and caused by influenza-like illness viruses; outbreaks that are caused by bacteria (i.e. pertussis, invasive pneumococcal disease) and other types of viruses (i.e. measles, rubella (German measles), chickenpox) are excluded. Also excluded are those outbreaks that have no causative agent identified by the Provincial Laboratory for Public Health or where specimens are not tested or an outbreak with only one infected (confirmed or probable) case during a 7 day period. This follows the same approach of PHAC FluWatch for defining ILI/influenza outbreak. The naming convention of outbreak facilities by FluWatch - "Hospital and residential institutions" - is also adopted. Outbreaks in schools are officially counted in tables or graphs whether there is or not a laboratory confirmation; outbreaks in hospital and residential institutions that are pending for laboratory confirmation are described for information only but not officially presented in graphs or tables in this report.

INFLUENZA IMMUNIZATIONS

Influenza immunization data are reported by AHS zones. Numbers are available to the Public Health Surveillance team at the beginning of the week for the doses administered the previous week (Sunday to Saturday). It includes those doses administered by AHS (Public Health) only. Clients can only exist in one priority group. Immunization coverage rates will be reported at the end of March, 2011.

POPULATION NUMBERS

Population data values used to calculate rates are for June 30, 2009 and are estimated using actual population values from the Alberta Health Care Insurance Plan (AHCIP) Registration File as of March 31, 2009. The following registrants are included: residents of Alberta; 'residents' of Alberta temporarily living elsewhere, such as extended visits or vacations or students attending an educational institute outside of Alberta, or Albertans temporarily (up to four years) working outside Alberta; persons during the first three months after they move from Alberta to another Canadian province; dependants of members of the RCMP and Armed Forces; persons from another country who are working or studying in Alberta on valid visas; and Natives/Aboriginals whose premiums are paid by Health Canada, First Nations and Inuit Health Branch. Not included are: members of the Armed Forces and RCMP; inmates at federal penitentiaries; persons from other provinces during their first three months in Alberta; and persons who have not registered for eligibility, or have opted out.

Slight differences between values provided at this level of aggregation and data provided at other levels of aggregation may occur because of round-off error. Population values are subject to change without notice when new source data is received.

SURVEILLANCE AND HEALTH STATUS ASSESSMENT

Public Health Surveillance

Report Date: May 17, 2011

An influenza report targeted to the general public is available at: <http://www.health.alberta.ca/health-info/influenza-evidence.html>