

Weekly Report

June 7th, 2011

The purpose of this report is to inform Public Health staff, primary care providers, acute care staff and other community practitioners about recent respiratory virus activity in the province of Alberta. Unless otherwise noted, all data presented are current as of the Saturday prior to the day the report is released.

To navigate to certain sections of the report or to visit other relevant websites, use the Quick Links below

[Alberta Snapshot](#)

[Section 1: Alberta](#)

[Section 2: Zone 1 - South](#)

[Section 2: Zone 2 - Calgary](#)

[Section 4: Zone 3 - Central](#)

[Section 5: Zone 4 - Edmonton](#)

[Section 6: Zone 5 - North](#)

[Annex: Data Notes](#)

[Current Global Information](#)

[FluWatch \(PHAC\)](#)

[FluView \(US CDC\)](#)

[HPA \(UK\)](#)

[WHO](#)

[Travel Advisories](#)

What's New?

- According to the most recent international and global influenza activity reports, the influenza season has concluded in the temperate zones of the northern hemisphere with only sporadic detections of virus. Tropical areas of the world, including the Dominican Republic, Jamaica and Madagascar, are experiencing low levels of transmission with various sub-types circulating in different areas.
- The influenza season appears to have started in South Africa, where there has been an increase in isolations of influenza virus; the majority of the isolates have been influenza A (H1N1)2009. There does not yet appear to be seasonal transmission in any other country in the temperate region of the southern hemisphere.
- Influenza activity continues to decrease in the United States and Canada. The small numbers of influenza detections that are occurring in the United States and Canada are predominantly influenza type B.
- In Alberta, influenza activity continues to decline. Rhino-enterovirus is currently the predominant respiratory virus circulating. As of the end of last week (June 4, 2011), the total number of influenza cases confirmed in the province this season was 1512, of which 36.6% have been identified as influenza A (H3), 16.4% as influenza A (H1N1) 2009, 45.2% as influenza type B, and 1.8% influenza A with unresolved sub-typing.
- One respiratory outbreak was confirmed in Alberta since the last update. It occurred in a Calgary Zone long term care facility and was attributed to rhino-enterovirus. The final attack rate was calculated as 11%. The onset of symptoms occurred in Week 20 (May 15-21, 2011). The final attack for the influenza A (H3) outbreak in the Calgary Zone reported in the last update has been confirmed as 24%.
- The 2010-11 seasonal influenza immunization rates are provided on page 3.

If you have questions about the Alberta Respiratory Virus Surveillance Update, or any of the indicators, please contact: AHSPublicHealthSurveillance@albertahealthservices.ca or phone: 780-342-0210

Alberta Snapshot

[Back to first page](#)

Indicators			Cumulative Counts					Alberta
			Week 35 (starting Aug 29/10) to Week 22 (starting May 29/11)					
			South	Calgary	Central	Edmonton	North	
Laboratory Confirmed Cases	Number of cases with a positive respiratory specimen ¹	Adenovirus	11	50	21	134	21	237
		Coronavirus	13	78	43	128	47	309
		Human metapneumovirus (hMPV)	9	36	7	38	15	105
		Influenza A	49	209	135	274	162	829
		Influenza B	94	177	74	206	132	683
		Parainfluenza	40	137	71	273	121	642
		Respiratory syncytial virus (RSV)	123	484	214	793	340	1954
		Rhino enterovirus	137	606	246	866	415	2270
		Mixed	40	183	59	198	110	590
		Total		516	1960	870	2910	1363
Outbreaks	# laboratory confirmed respiratory outbreaks ²	0	25	19	38	7	89	

-- Information not available

*Note: 28 specimens were positive for influenza A or B and one or more other virus type(s). These cases have been included in the influenza counts, as well as the other respective specimen type(s). They have not been included in the 'Mixed' category. Five specimens were positive for both influenza A & B.

¹ Sources: DIAL – Provincial Laboratory and the Outbreak Response Toolkit (includes cases with positive respiratory specimens received on or before June 4, 2011).

² Source: Alberta Health and Wellness Outbreak Reporting Form (Fillable PDF) from All Zones.

For more information on data definitions and sources see Annex: Data Notes section at the end of this report

SURVEILLANCE AND HEALTH STATUS ASSESSMENT

Public Health Surveillance

Report Date: June 7, 2011

An influenza report targeted to the general public is available at: <http://www.health.alberta.ca/health-info/influenza-evidence.html>

2010-11 Seasonal Influenza Immunization Rates

Oct 3rd, 2010 – May 15th, 2011

Healthcare workers²	South	Calgary	Central	Edmonton	North	Alberta
Immunized	6,127	27,410	10,106	28,189	5,755	77,587
Immunized by FNIH	135	143	57	65	333	733
Total Immunized	6,262	27,553	10,163	28,254	6,088	78,320
Eligible	20,919	70,540	30,286	77,913	21,128	220,786
% Immunized	29.9%	39.1%	33.6%	36.3%	28.8%	35.5%
Pregnant women³	South	Calgary	Central	Edmonton	North	Alberta
Immunized	526	3,489	441	1,821	584	6,861
Immunized by FNIH	13	63	23	13	99	211
Total Immunized	539	3,552	464	1,834	683	7,072
Eligible	4,108	19,226	5,607	14,938	7,251	51,130
% Immunized	13.1%	18.5%	8.3%	12.3%	9.4%	13.8%
Seniors 65 years and older⁴	South	Calgary	Central	Edmonton	North	Alberta
Immunized	21,493	81,816	29,243	76,711	17,464	226,727
Immunized by FNIH	167	184	47	44	450	892
Total Immunized	21,660	82,000	29,290	76,755	17,914	227,619
Eligible	36,656	131,854	54,322	127,023	36,746	386,601
% Immunized	59.1%	62.2%	53.9%	60.4%	48.8%	58.9%
Children 6 months to 23 months	South	Calgary	Central	Edmonton	North	Alberta
Dose 1 of 2	1,225	9,858	1,886	5,131	1,707	19,807
Dose 2 of 2	762	5,443	1,273	2,549	965	10,992
Annual	454	5,613	614	2,113	748	9,542
By FNIH - Doses 2 of 2 + Annual:	66	59	31	26	145	327
Total Complete	1,282	11,115	1,918	4,688	1,858	20,861
Eligible	6,265	28,411	8,568	22,974	10,511	76,729
% Complete	20.5%	39.1%	22.4%	20.4%	17.7%	27.2%

SURVEILLANCE AND HEALTH STATUS ASSESSMENT

Public Health Surveillance

Report Date: June 7, 2011

An influenza report targeted to the general public is available at: <http://www.health.alberta.ca/health-info/influenza-evidence.html>

Children 24 months to 59 months	South	Calgary	Central	Edmonton	North	Alberta
Dose 1 of 2	305	1,671	369	1,054	339	3,738
Dose 2 of 2	144	800	207	464	147	1,762
Annual	1,717	10,439	1,957	6,777	2,231	23,121
By FNIH - Doses 2 of 2 + Annual:	61	130	75	45	308	619
Total Complete	1,922	11,369	2,239	7,286	2,686	25,502
Eligible	12,179	54,499	17,091	43,925	20,085	147,779
% Complete	15.8%	20.9%	13.1%	16.6%	13.4%	17.3%
High Risk: 5 years to 8 years	South	Calgary	Central	Edmonton	North	Alberta
Dose 1 of 2	48	210	47	160	52	517
Dose 2 of 2	22	81	24	41	12	180
Annual	501	2,808	613	2,276	912	7,110
By FNIH - Doses 2 of 2 + Annual:	14	26	22	5	103	170
Total Complete	537	2,915	659	2,322	1,027	7,460
Eligible	3,501	13,570	5,522	13,005	5,721	41,319
% Complete	15.3%	21.5%	11.9%	17.9%	18.0%	18.1%
High Risk: 9 years to 64 years	South	Calgary	Central	Edmonton	North	Alberta
Immunized	6,512	35,827	8,639	30,707	8,583	90,268
Immunized by FNIH	237	259	198	101	675	1,470
Total Immunized	6,749	36,086	8,837	30,808	9,258	91,738
Eligible	45,245	223,930	80,256	215,301	71,211	635,943
% Immunized	14.9%	16.1%	11.0%	14.3%	13.0%	14.4%
Healthy: 5 years to 8 years	South	Calgary	Central	Edmonton	North	Alberta
Dose 1 of 2	190	857	172	486	161	1,866
Dose 2 of 2	70	337	93	192	63	755
Annual	1,342	8,070	1,837	6,303	2,324	19,876
By FNIH - Doses 2 of 2 + Annual:	90	96	134	99	384	803
Total Immunized	1,502	8,503	2,064	6,594	2,771	21,434
Eligible	11,287	51,870	15,866	40,200	18,444	137,667
% Complete		16.4%	13.0%	16.4%	15.0%	15.6%

SURVEILLANCE AND HEALTH STATUS ASSESSMENT

Public Health Surveillance

Report Date: June 7, 2011

An influenza report targeted to the general public is available at: <http://www.health.alberta.ca/health-info/influenza-evidence.html>

Healthy: 9 years to 64 years	South	Calgary	Central	Edmonton	North	Alberta
Immunized	21,903	144,559	24,855	99,710	28,627	319,654
Immunized by FNIH	765	1,266	801	301	3,129	6,262
Total Immunized	22,668	145,825	25,656	100,011	31,756	325,916
Eligible	141,615	770,257	205,093	594,653	240,016	1,951,634
% Immunized	16.0%	18.9%	12.5%	16.8%	13.2%	16.7%

Long Term Care Residents ⁵	South	Calgary	Central ⁶	Edmonton	North	Alberta
Immunized	767	4,414	1,401	4,442	1,243	12,267
Eligible	839	4,892	1,616	4,966	1,295	13,608
% Immunized	91.4%	90.2%	86.7%	89.4%	96.0%	90.1%

Long Term Care Staff ⁵	South	Calgary	Central ⁶	Edmonton	North	Alberta
Immunized	1,146	5,622	1,348	5,410	797	14,323
Eligible	2,117	6,897	3,033	7,977	1,572	21,596
% Immunized	54.1%	81.5%	44.4%	67.8%	50.7%	66.3%

1.0 Immunization data was manually collected in each zone on the seasonal influenza NCR data collection form. First and annual doses of influenza vaccine were administered until April 15th, 2011, with 2nd doses administered until May 15th, 2011. Data was aggregated by each zone and sent centrally for inclusion into the provincial report. Data includes all immunizations delivered by Alberta Health Services (AHS), various Community Providers and First Nations Inuit Health (FNIH). Community providers were required to submit immunization data twice each influenza season (Dec 31st and March 31st). Data from both reports are included in the above report. Denominators were based on the 2010 mid-year population, include the First Nations communities and exclude Lloydminster. Numerators also exclude Lloydminster. Denominators by influenza immunization priority groups were obtained from the Interactive Health Data Application (IHDA) managed by Alberta Health and Wellness (AHW) at: http://www.ahw.gov.ab.ca/IHDA_Retrieval/. For more information please refer to IHDA data notes available here: http://www.ahw.gov.ab.ca/IHDA_Retrieval/ShowMetaDataNotesServlet?299

Immunization rates were calculated as follows:

- ‘% Immunized’ represent the 1-dose immunization rate (need only one dose of vaccine to be complete).
- ‘% Complete’ represent the ‘dose 2 of 2 + Annual’ immunization rate (need two doses or one annual dose to be complete).

SURVEILLANCE AND HEALTH STATUS ASSESSMENT

Public Health Surveillance

Report Date: June 7, 2011

An influenza report targeted to the general public is available at: <http://www.health.alberta.ca/health-info/influenza-evidence.html>

2.0 Denominators for Health Care Workers (HCW) were obtained from IHDA, and estimated as follows: *“Total of all health care workers is assumed to be 8.5% of the adult population based on the H1N1Ffollow-up Survey. LTC staff are assumed to be 9.0% of all HCW, based on the number of LTC staff reported by AHS in the 2009-2010 seasonal influenza immunization summary.”* Long term care staff are included in this HCW denominator.

3.0 The denominator for pregnant women was obtained from IHDA, and estimated as follows: *“calculated using the number of live births in 2010, adjusted to estimate the number of pregnancies during a three month period.”*

4.0 Immunizations delivered to residents of Long Term Care Facilities are also included in totals for Seniors 65 years of age and older.

5.0 Immunization rates for residents and staff of LTC are representative of the immunization rate in the population on Dec 15th, 2010. It is necessary to define the immunization rate in this way due to the high turnover in this population. Using the total number of LTC residents and/or staff immunized in 2010/2010 instead of a snapshot may result in an immunization rate of over 100%.

6.0 Missing data from 3 Long Term Care facilities in this zone.

SECTION 1: ALBERTA

[Back to first page](#)

Summary

Influenza activity is currently at a level similar to that seen before the 2010-11 season began. Rhino-enterovirus continues to be the predominant respiratory virus circulating in Alberta.

Laboratory Data (see [Figure 1A](#), [Figure 1B](#) & [Figure 1C](#), [Table 1A](#) & [Table 1B](#))

The number of Influenza cases being confirmed in the province is currently low relative to the rest of the season. Rhino-enterovirus is currently the predominant virus circulating, while adenovirus has shown a slight increase in the last few weeks (primarily in Edmonton Zone). As of the end of last week (June 4, 2011), the total number of confirmed cases of influenza in the province this season is 1512 (36.6% influenza A (H3), 16.4% influenza A (H1N1) 2009, 45.2% influenza type B, and 1.8% influenza A with unresolved sub-typing). At this point in the season, the age specific rate for confirmed influenza cases (all types) in infants 0 to <2 years of age is higher than the rate in other age groups, at 21.2 per 10,000 compared to 9.9 per 10,000 or lower for all other age groups.

Outbreaks (see [Figure 1D](#))

One respiratory outbreak has been confirmed in Alberta since the last update. It was a Rhino-enterovirus outbreak in a Calgary Zone long term care facility with a final attack rate of 11%. The onset of symptoms occurred in Week 20 (May 15-21, 2011). Another Calgary Zone outbreak confirmed in the last report as influenza A (H3) has now been reported as having a final attack rate of 24%.

Health Link Alberta Calls (see [Figure 1E](#))

The number of calls to Health Link Alberta for cough or breathing difficulties has remained stable over the past several weeks.

Emergency Department/Urgent Care Center Visits and Hospital Admissions

The number of visits to emergency departments/urgent care centers (ED's) and hospital admissions for influenza-like illness (ILI) in the City of Calgary and Edmonton Zone decreased by 28% and 18%, respectively, in Week 22 (May 29-June 4 2011) from the previous week. Generally, both of these indicators have been declining over the last several weeks.

The number of emergency department visits for cough decreased by 17% in Week 22 (May 29-June 4, 2011) as compared to the previous week, while the number of hospital admissions for the same reason remained unchanged. Generally, the number of emergency department visits for cough has been declining over the last several weeks, while the trend for hospital admissions appears to be fluctuating.

Sentinel Physician Office Visits

The combined percentage of ILI- and LRTI-related visits of all visits to sentinel physician offices in Alberta decreased by 67% in Week 21 (May 22-28, 2011) compared to the previous week. Aside from an increase seen the week prior to Week 21, this indicator has generally been decreasing for the past several weeks.

SURVEILLANCE AND HEALTH STATUS ASSESSMENT

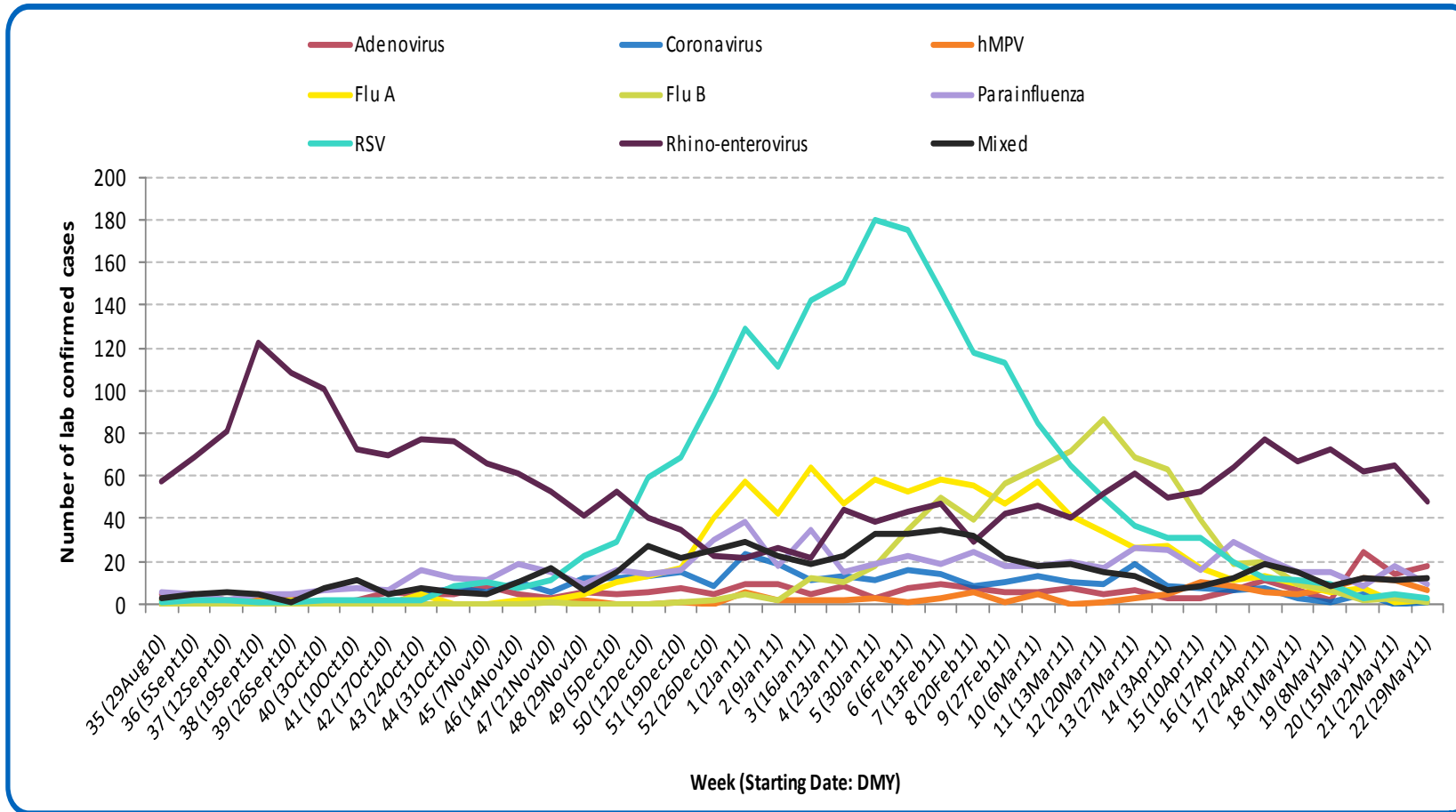
Public Health Surveillance

Report Date: June 7, 2011

An influenza report targeted to the general public is available at: <http://www.health.alberta.ca/health-info/influenza-evidence.html>

[Back to start of section](#)

Figure 1A: Laboratory confirmed respiratory virus cases, by virus type, by week, Alberta (2010-11)



Sources: DIAL – Provincial Laboratory and the Outbreak Response Toolkit (includes cases with positive respiratory specimens received on or before June 4, 2011). For more information on data definitions and sources see [Annex: Data Notes section at the end of this report](#)

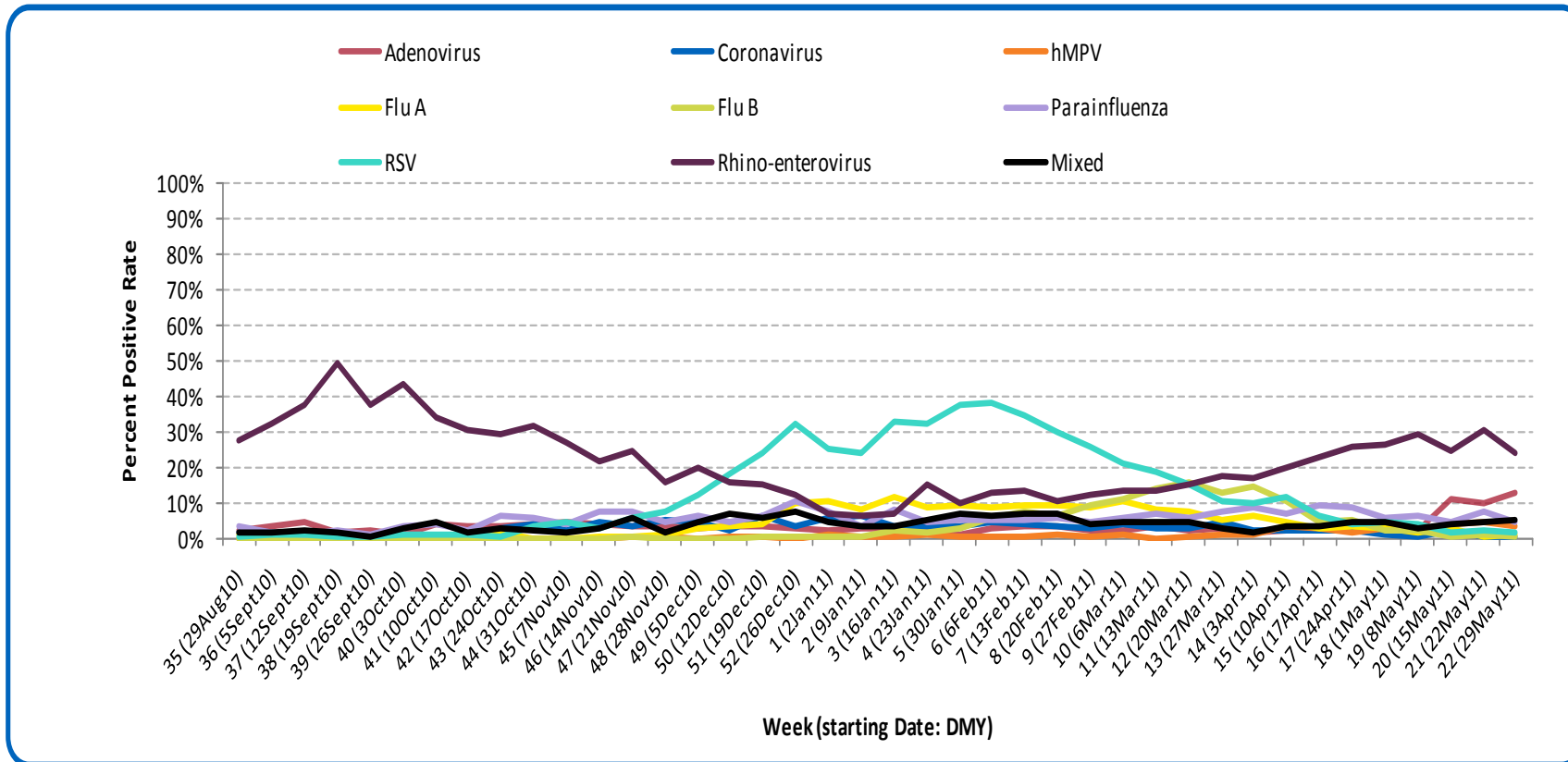
SURVEILLANCE AND HEALTH STATUS ASSESSMENT

Public Health Surveillance
Report Date: June 7, 2011

An influenza report targeted to the general public is available at: <http://www.health.alberta.ca/health-info/influenza-evidence.html>

[Back to start of section](#)

Figure 1B: Respiratory specimen percent positive rates, by virus type, by week, Alberta (2010-11)



Sources: DIAL – Provincial Laboratory (includes cases with positive respiratory specimens received on or before June 4, 2011).
For more information on data definitions and sources see [Annex: Data Notes section at the end of this report](#)

SURVEILLANCE AND HEALTH STATUS ASSESSMENT

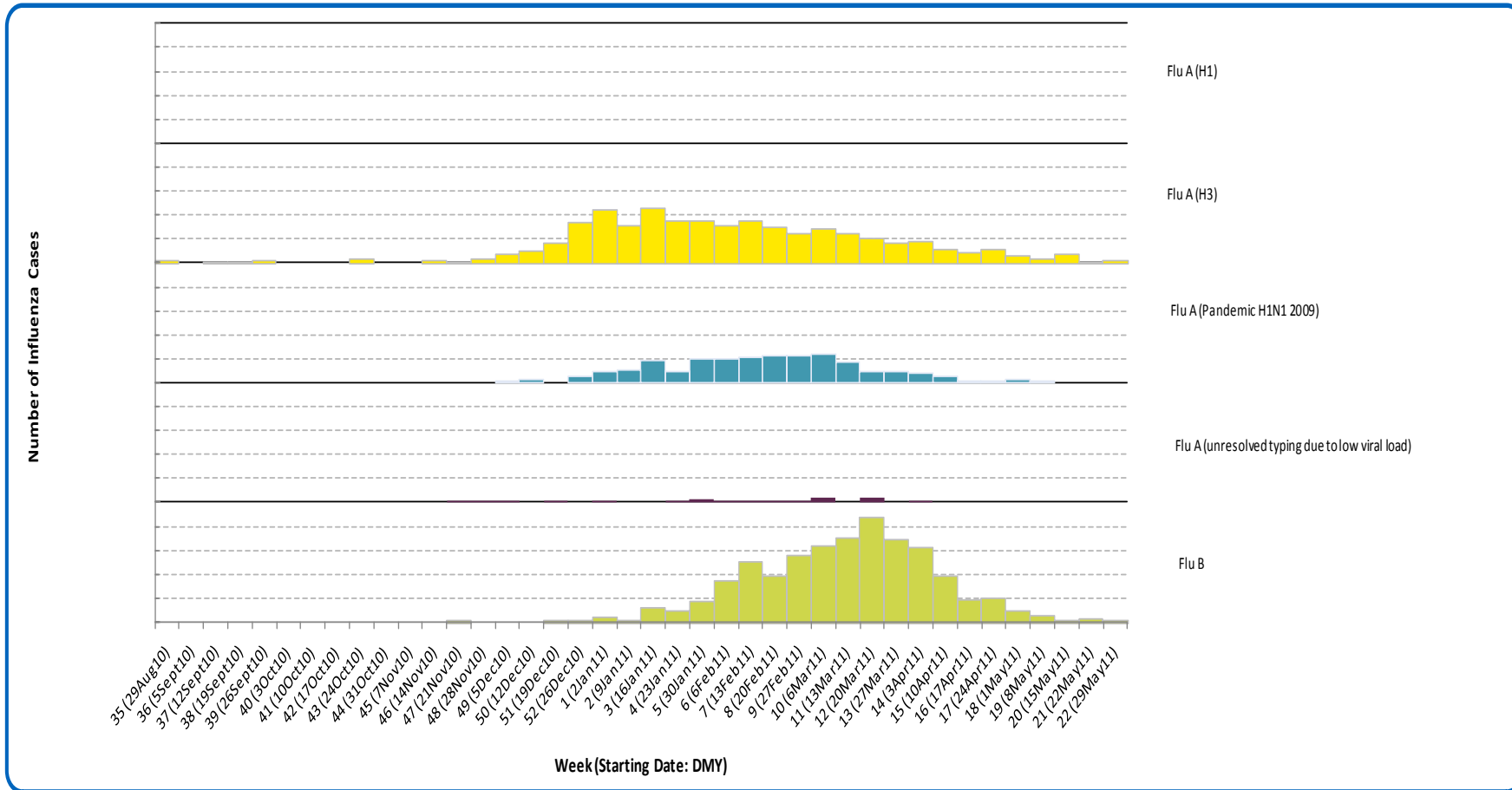
Public Health Surveillance

Report Date: June 7, 2011

An influenza report targeted to the general public is available at: <http://www.health.alberta.ca/health-info/influenza-evidence.html>

[Back to start of section](#)

Figure 1C: Laboratory confirmed influenza cases, by subtype, by week specimen received, Alberta (2010-2011)



*Note: 28 specimens were positive for influenza A or B and one or more other virus type(s). Five specimens were positive for both influenza A & B.

Source: Outbreak Response Toolkit (includes cases with positive respiratory specimens received on or before June 4, 2011).

For more information on data definitions and sources see [Annex: Data Notes section at the end of this report](#)

SURVEILLANCE AND HEALTH STATUS ASSESSMENT

Public Health Surveillance

Report Date: June 7, 2011

An influenza report targeted to the general public is available at: <http://www.health.alberta.ca/health-info/influenza-evidence.html>

[Back to start of section](#)

Table 1A: New influenza cases (and age specific rates), by subtype, by age group, Alberta (Weeks 21 & 22: May 22 - June 4, 2011)

	Flu A (Seasonal-H1)		Flu A (Seasonal-H3)		Flu A (Pandemic H1N1 2009)		Flu A (unresolved typing due to low viral load)		Flu B		Total	
	#	Rate (per 10,000)	#	Rate (per 10,000)	#	Rate (per 10,000)	#	Rate (per 10,000)	#	Rate (per 10,000)	#	Rate (per 10,000)
0 to <2 years	0	0.0	0	0.0	0	0.0	0	0.0	0	0.0	0	0.0
2 to <5 years	0	0.0	1	0.1	0	0.0	0	0.0	0	0.0	0	0.0
5 to <9 years	0	0.0	1	0.1	0	0.0	0	0.0	0	0.0	0	0.0
9 to <18 years	0	0.0	0	0.0	0	0.0	0	0.0	1	<0.1	1	<0.1
18 to <65 years	0	0.0	1	<0.1	0	0.0	0	0.0	1	<0.1	0	0.0
65 to <75 years	0	0.0	0	0.0	0	0.0	0	0.0	0	0.0	0	0.0
75+ years	0	0.0	0	0.0	0	0.0	0	0.0	2	0.1	2	0.1
Total	0	0.0	3	<0.1	0	0.0	0	0.0	4	<0.1	7	<0.1

Table 1B: Cumulative influenza cases (and age specific rates), by subtype, by age group, Alberta (Aug 29, 2010 – June 4, 2011)

	Flu A (Seasonal-H1)		Flu A (Seasonal-H3)		Flu A (Pandemic H1N1 2009)		Flu A (unresolved typing due to low viral load)		Flu B		Total	
	#	Rate (per 10,000)	#	Rate (per 10,000)	#	Rate (per 10,000)	#	Rate (per 10,000)	#	Rate (per 10,000)	#	Rate (per 10,000)
0 to <2 years	0	0.0	83	8.0	33	3.2	5	0.5	98	9.5	219	21.2
2 to <5 years	0	0.0	47	3.2	16	1.1	2	0.1	82	5.5	147	9.9
5 to <9 years	0	0.0	38	2.1	10	0.6	2	0.1	97	5.4	147	8.2
9 to <18 years	0	0.0	31	0.7	18	0.4	3	0.1	137	3.3	189	4.5
18 to <65 years	0	0.0	222	0.9	167	0.7	12	<0.1	222	0.9	623	2.6
65 to <75 years	0	0.0	25	1.2	3	0.1	0	0.0	26	1.2	54	2.5
75+ years	0	0.0	108	5.9	1	0.1	3	0.2	21	1.1	133	7.2
Total	0	0.0	554	1.5	248	0.7	27	0.1	683	1.9	1512	4.1

Source for Table 1A & 1B: Outbreak Response Toolkit (includes cases with positive respiratory specimens received on or before June 4, 2011).

Population data values used to calculate rates are for June 30, 2009 and are estimated using actual population values from the Alberta Health Care Insurance Plan (AHCHIP) Registration File as of March 31, 2009.

For more information on data definitions and sources see [Annex: Data Notes section at the end of this report](#)

SURVEILLANCE AND HEALTH STATUS ASSESSMENT

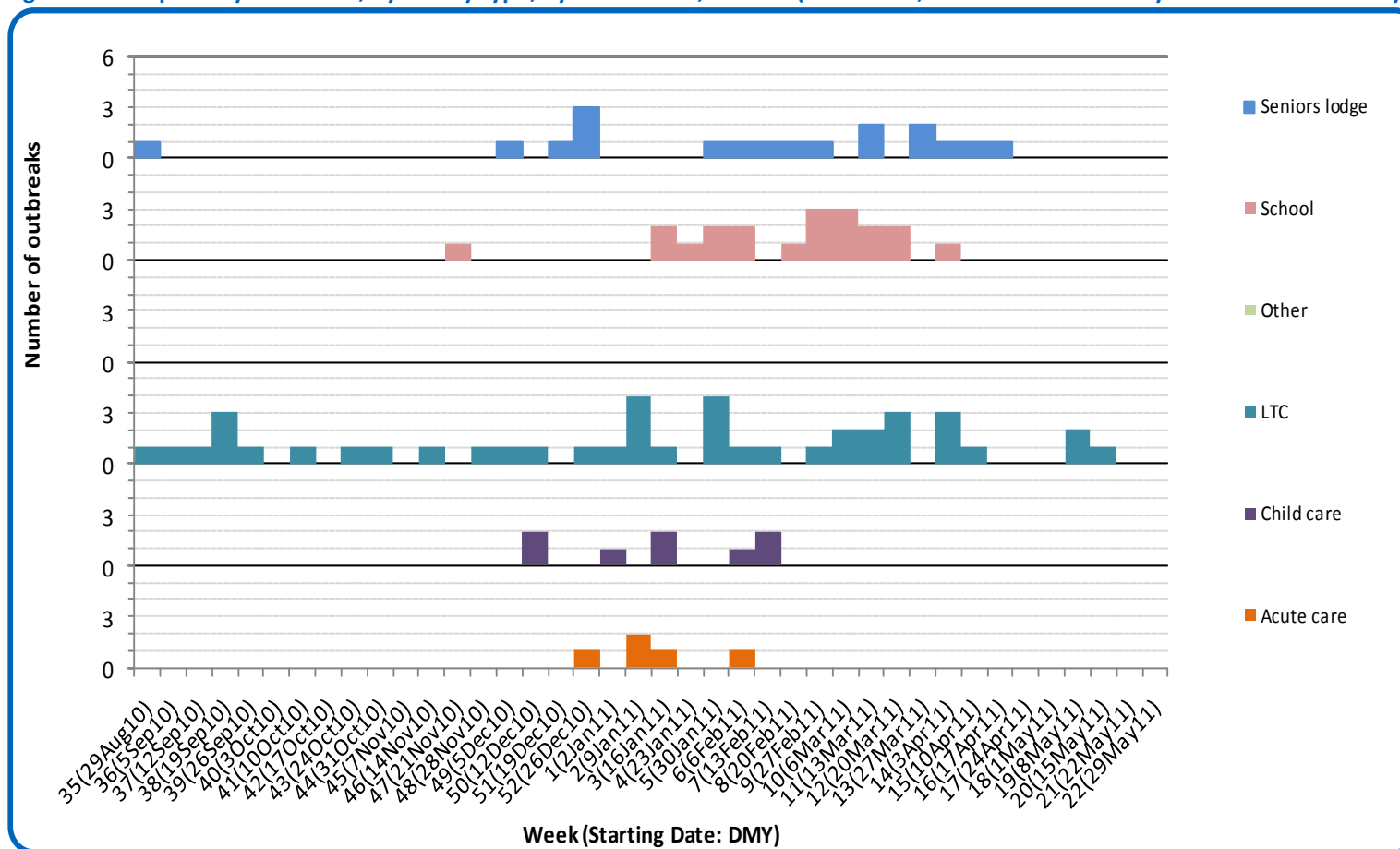
Public Health Surveillance

Report Date: June 7, 2011

An influenza report targeted to the general public is available at: <http://www.health.alberta.ca/health-info/influenza-evidence.html>

[Back to start of section](#)

Figure 1D: Respiratory outbreaks, by facility type, by onset week, Alberta (2010-2011; school outbreaks may not have a laboratory confirmation)



Source: Alberta Outbreak Reporting Form as of 23:59 on June 4, 2011. LTC stands for long term care facility. For more information on data definitions and sources see [Annex: Data Notes section at the end of this report](#)

SURVEILLANCE AND HEALTH STATUS ASSESSMENT

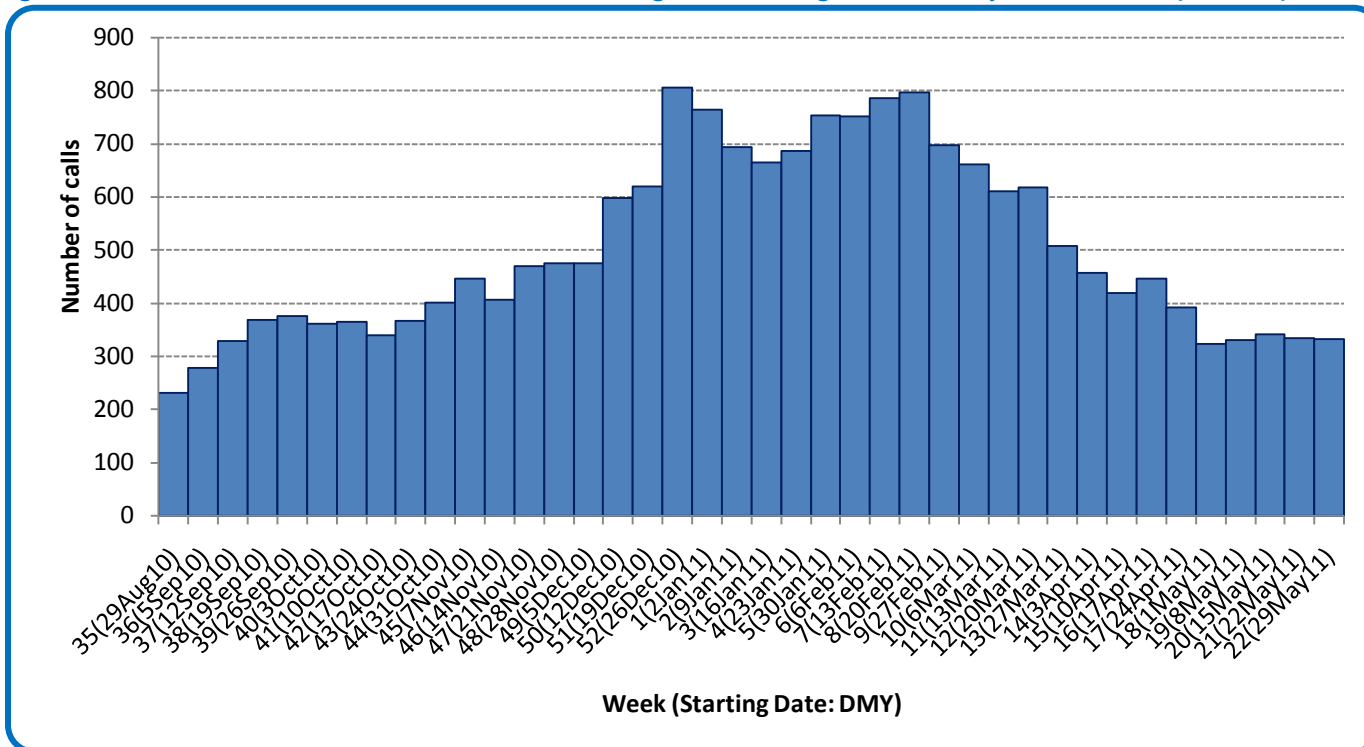
Public Health Surveillance

Report Date: June 7, 2011

An influenza report targeted to the general public is available at: <http://www.health.alberta.ca/health-info/influenza-evidence.html>

[Back to start of section](#)

Figure 1E: Number of calls to Health Link Alberta for cough or breathing difficulties, by week, Alberta (2010-11)



Source: Sharp Focus - Health Link Alberta - via Alberta Real Time Syndromic Surveillance Net (ARTSSN) as of 23:59 on June 4, 2011. For more information on data definitions and sources see [Annex: Data Notes section at the end of this report](#)

SURVEILLANCE AND HEALTH STATUS ASSESSMENT

Public Health Surveillance

Report Date: June 7, 2011

An influenza report targeted to the general public is available at: <http://www.health.alberta.ca/health-info/influenza-evidence.html>

SECTION 2: ZONE 1 - SOUTH

[Back to first page](#)

Summary

Although some respiratory viruses are circulating in South Zone (primarily rhino-enterovirus, parainfluenza and adenovirus), no cases of influenza have been confirmed in South Zone in the past two weeks.

Laboratory Data (see [Figure 2A](#), [Figure 2B](#), [Figure 2C](#) & [Table 2A](#))

There have been no confirmed cases of influenza in the South Zone in the past two weeks. The age specific rate of confirmed influenza in South zone is highest for children between the ages of 2 to less than 5 years, at 15.0 per 10,000.

Outbreaks

There have been no respiratory outbreaks reported in South Zone this season.

Health Link Alberta Calls (see [Figure 2D](#))

Despite a slight increase in the number of calls to Health Link Alberta for cough or breathing difficulties in the South Zone in Week 19 (May 8-14, 2011), the trend for this indicator has generally been declining over the past few weeks.

Emergency Department/Urgent Care Center Visits and Hospital Admissions

This information is not available for South Zone.

SURVEILLANCE AND HEALTH STATUS ASSESSMENT

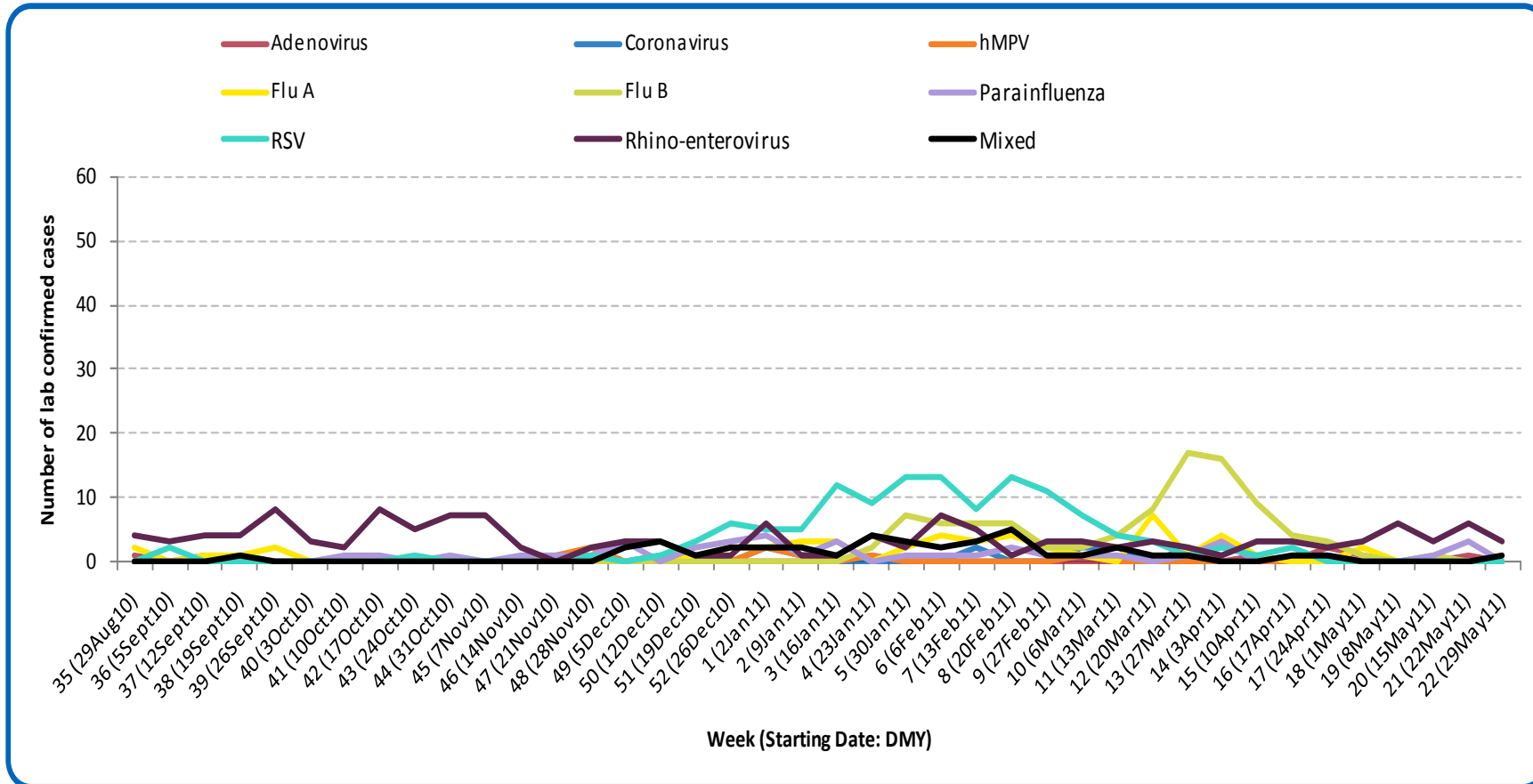
Public Health Surveillance

Report Date: June 7, 2011

An influenza report targeted to the general public is available at: <http://www.health.alberta.ca/health-info/influenza-evidence.html>

[Back to start of section](#)

Figure 2A: Laboratory confirmed respiratory virus cases, by virus type, by week, South Zone (2010-2011)



Sources: DIAL – Provincial Laboratory and the Outbreak Response Toolkit (includes cases with positive respiratory specimens received on or before June 4, 2011). For more information on data definitions and sources see [Annex: Data Notes section at the end of this report](#)

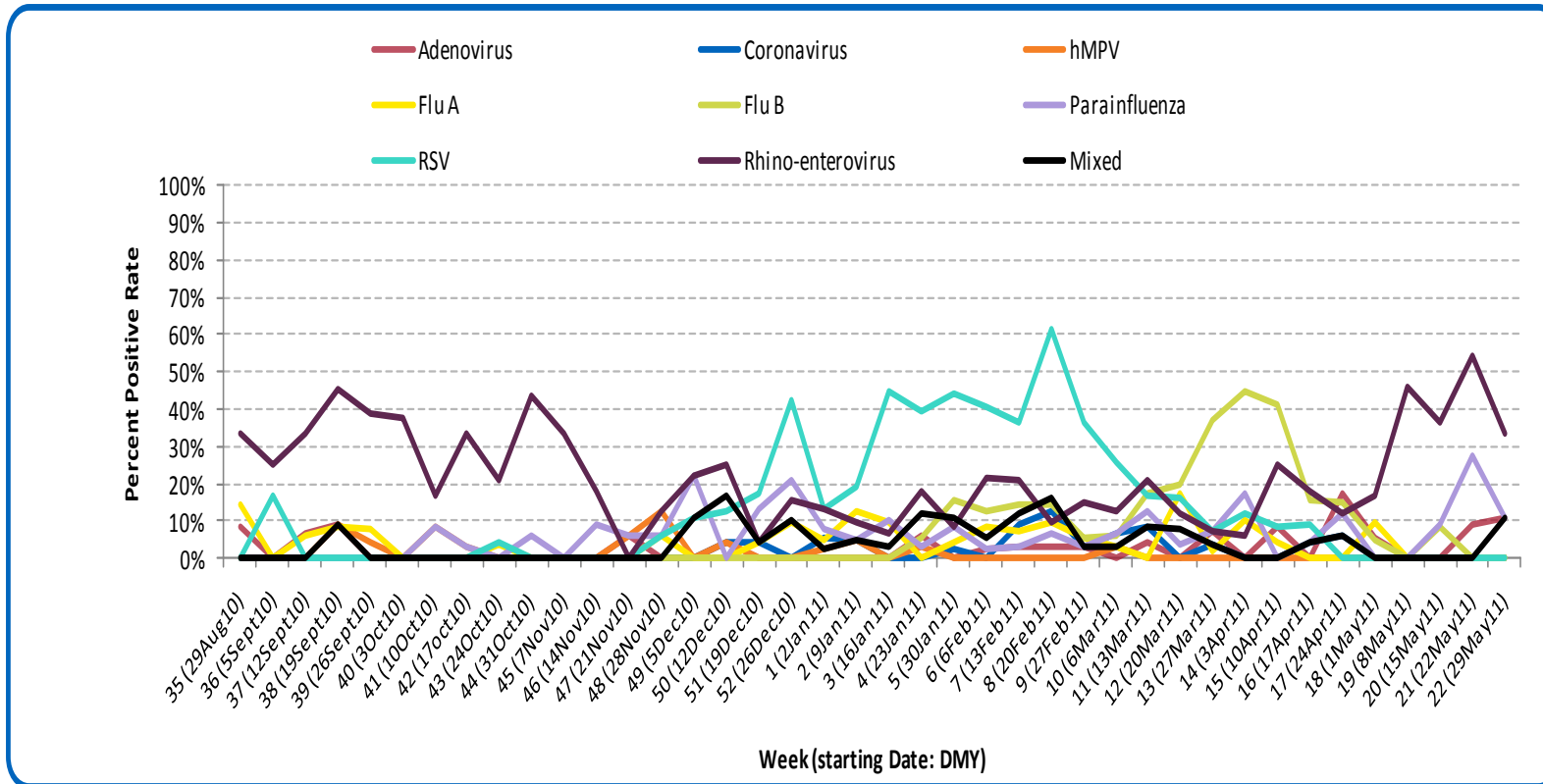
SURVEILLANCE AND HEALTH STATUS ASSESSMENT

Public Health Surveillance
Report Date: June 7, 2011

An influenza report targeted to the general public is available at: <http://www.health.alberta.ca/health-info/influenza-evidence.html>

[Back to start of section](#)

Figure 2B: Respiratory specimen percent positive rates, by virus type, by week, South Zone (2010-2011)



Source: DIAL – Provincial Laboratory (includes cases with positive respiratory specimens received on or before June 4, 2011)
For more information on data definitions and sources see [Annex: Data Notes section at the end of this report](#)

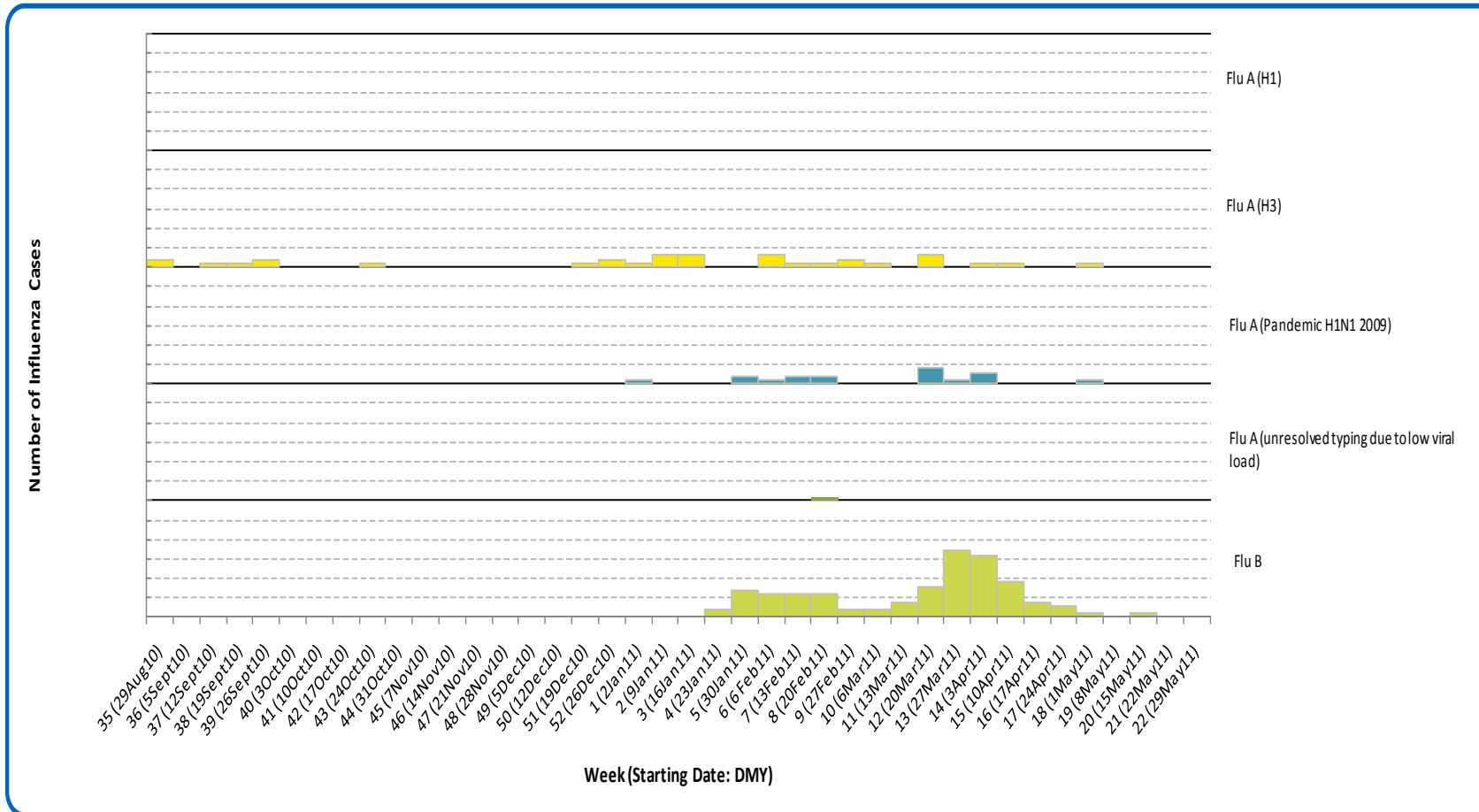
SURVEILLANCE AND HEALTH STATUS ASSESSMENT

Public Health Surveillance
Report Date: June 7, 2011

An influenza report targeted to the general public is available at: <http://www.health.alberta.ca/health-info/influenza-evidence.html>

[Back to start of section](#)

Figure 2C: Laboratory confirmed influenza cases, by subtype, by week specimen received, South Zone (2010-2011)



Source: Outbreak Response Toolkit (includes cases with positive respiratory specimens received on or before June 4, 2011).

*Note: Two specimens were positive for influenza A or B and one other virus type. One specimen was positive for both influenza A & B.

For more information on data definitions and sources see [Annex: Data Notes section at the end of this report](#)

SURVEILLANCE AND HEALTH STATUS ASSESSMENT

Public Health Surveillance

Report Date: June 7, 2011

An influenza report targeted to the general public is available at: <http://www.health.alberta.ca/health-info/influenza-evidence.html>

[Back to start of section](#)

Table 2A: Cumulative influenza cases (and age specific rates), by subtype, by age group, South Zone (Aug 29, 2010 – June 4, 2011)

	Flu A (Seasonal-H1)		Flu A (Seasonal-H3)		Flu A (Pandemic H1N1 2009)		Flu A (unresolved typing due to low viral load)		Flu B		Total	
	#	Rate (per 10,000)	#	Rate (per 10,000)	#	Rate (per 10,000)	#	Rate (per 10,000)	#	Rate (per 10,000)	#	Rate (per 10,000)
0 to <2 years	0	0.0	4	4.8	0	0.0	0	0.0	5	6.0	9	10.8
2 to <5 years	0	0.0	5	4.2	2	1.7	0	0.0	11	9.2	18	15.0
5 to <9 years	0	0.0	1	0.7	0	0.0	0	0.0	11	7.5	12	8.2
9 to <18 years	0	0.0	0	0.0	1	0.3	0	0.0	23	6.8	24	7.1
18 to <65 years	0	0.0	19	1.1	12	0.7	1	0.1	40	2.3	72	4.1
65 to <75 years	0	0.0	0	0.0	2	1.0	0	0.0	3	1.5	5	2.6
75+ years	0	0.0	2	1.1	0	0.0	0	0.0	1	0.5	3	1.6
Total	0	0.0	31	1.1	17	0.6	1	<0.1	94	3.3	143	5.1

Source for Tables 2A & 2B: Outbreak Response Toolkit (includes cases with positive respiratory specimens received on or before June 4, 2011).

Population data values used to calculate rates are for June 30, 2009 and are estimated using actual population values from the Alberta Health Care Insurance Plan (AHCIP) Registration File as of March 31, 2009.

For more information on data definitions and sources see [Annex: Data Notes section at the end of this report](#)

SURVEILLANCE AND HEALTH STATUS ASSESSMENT

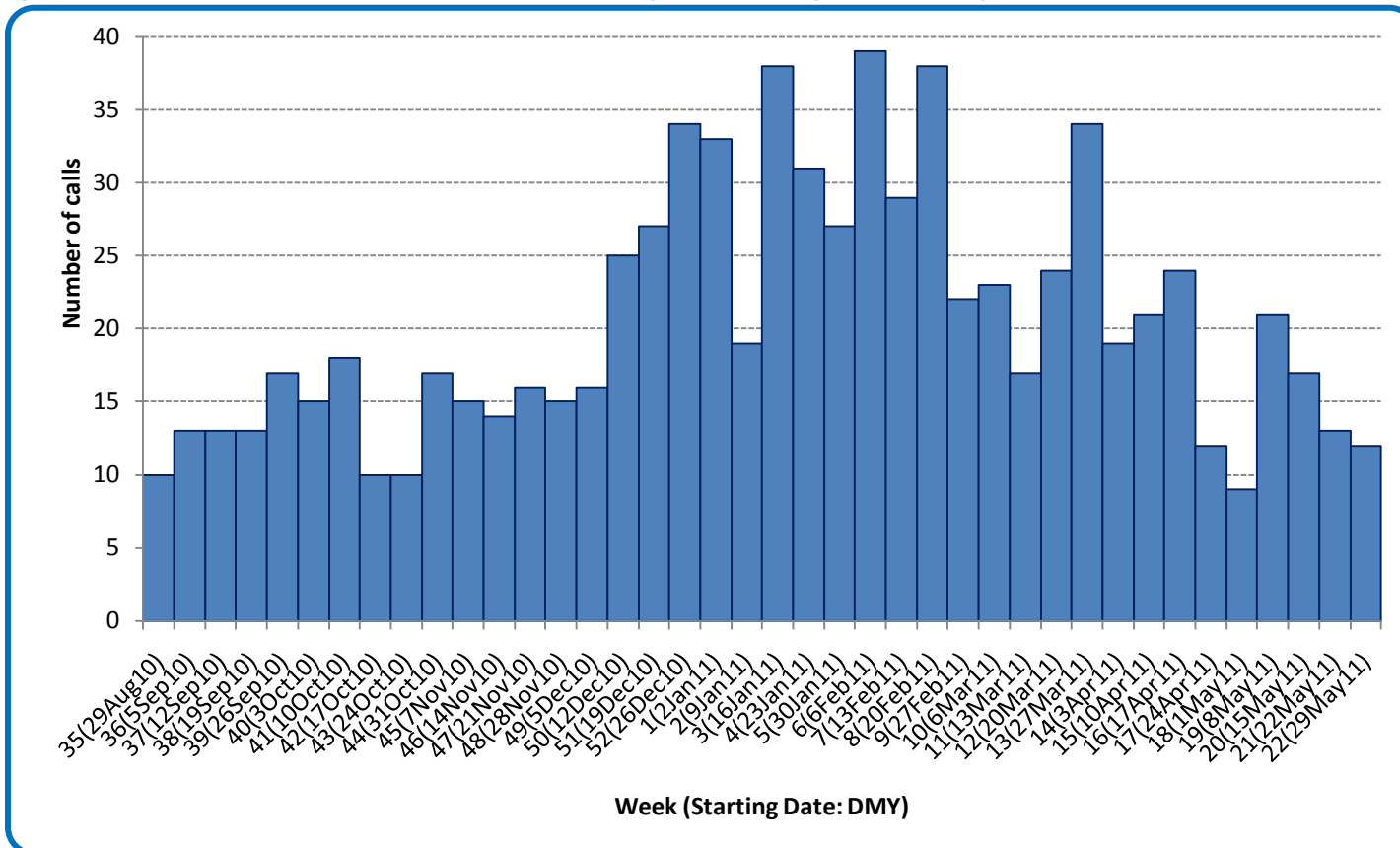
Public Health Surveillance

Report Date: June 7, 2011

An influenza report targeted to the general public is available at: <http://www.health.alberta.ca/health-info/influenza-evidence.html>

[Back to start of section](#)

Figure 2D: Number of calls to Health Link Alberta for cough or breathing difficulties, by week, South Zone (2010-11)



Source: Sharp Focus - Health Link Alberta - via Alberta Real Time Syndromic Surveillance Net (ARTSSN) as of 23:59 on June 4, 2011. For more information on data definitions and sources see [Annex: Data Notes section at the end of this report](#)

SURVEILLANCE AND HEALTH STATUS ASSESSMENT

Public Health Surveillance

Report Date: June 7, 2011

An influenza report targeted to the general public is available at: <http://www.health.alberta.ca/health-info/influenza-evidence.html>

SECTION 2: ZONE 2 - CALGARY

[Back to first page](#)

Summary

Respiratory virus activity continues to decline in Calgary Zone.

Laboratory Data (see [Figure 3A](#), [Figure 3B](#), [Figure 3C](#), [Table 3A](#) & [Table 3B](#))

Rhino-enterovirus is still the predominant respiratory virus circulating in Calgary Zone, however appears to be showing a declining trend. Since the beginning of the season, a total of 386 cases of influenza have been confirmed in Calgary Zone (38.1% have been identified as influenza A (H3), 13.5% as influenza A (H1N1) 2009, 45.9% as influenza type B and 2.6% as influenza A with unresolved sub-typing). Compared to the age specific rates in other age groups, the rate for confirmed influenza is highest among infants less than 2 years of age at 12.2 per 10,000.

Outbreaks (see [Figure 3D](#))

Since the last update, there has been one newly confirmed rhinovirus-enterovirus outbreak in a Calgary Zone long term care facility. The final attack rate was 11 % and the symptom onset occurred during week 20 (May 15-21, 2011). Of note, the influenza A (H3) outbreak in a Calgary Zone long term care facility referred to in the last update had a final attack rate of 24%.

Health Link Alberta Calls (see [Figure 3E](#))

The number of calls to Health Link Alberta for cough or breathing difficulties in Calgary Zone has remained at a level similar to that seen prior to the 2010-11 influenza season for several weeks now.

Emergency Department/Urgent Care Center Visits and Hospital Admissions (See [Figure 3F](#))

The number of visits to emergency departments and hospital admissions for patients with influenza-like-illness (ILI) symptoms decreased by 28% and 8%, respectively, in Week 22 (May 29-June 4, 2011) compared to the week prior to that. The trend for emergency department visits appears to be declining overall, while the trend for hospital admissions has been fluctuating.

The number of emergency department visits for cough at the six urban emergency departments/urgent care centers (ED's) in the City of Calgary decreased by 20% in Week 22 (May 29-June 4, 2011) as compared to the previous week, while hospital admissions increased by 50%. Generally, the trend over the last several weeks for emergency department visits for ILI has been decreasing, while the number of hospital admissions for ILI has been fluctuating.

SURVEILLANCE AND HEALTH STATUS ASSESSMENT

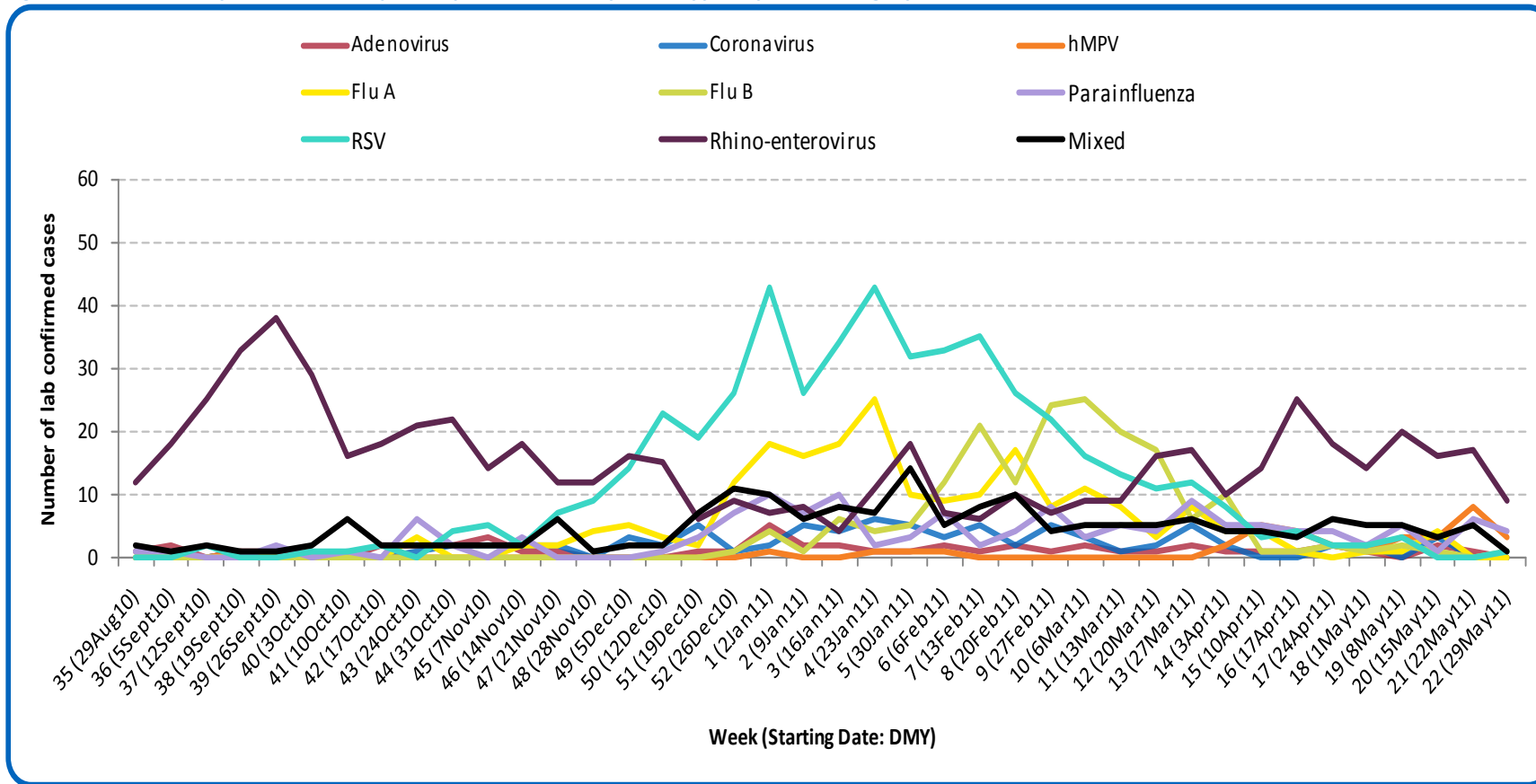
Public Health Surveillance

Report Date: June 7, 2011

An influenza report targeted to the general public is available at: <http://www.health.alberta.ca/health-info/influenza-evidence.html>

[Back to start of section](#)

Figure 3A: Laboratory confirmed respiratory virus cases, by virus type, by week, Calgary Zone (2010-2011)



Sources: DIAL – Provincial Laboratory and the Outbreak Response Toolkit (includes cases with positive respiratory specimens received on or before June 4, 2011). For more information on data definitions and sources see [Annex: Data Notes section at the end of this report](#)

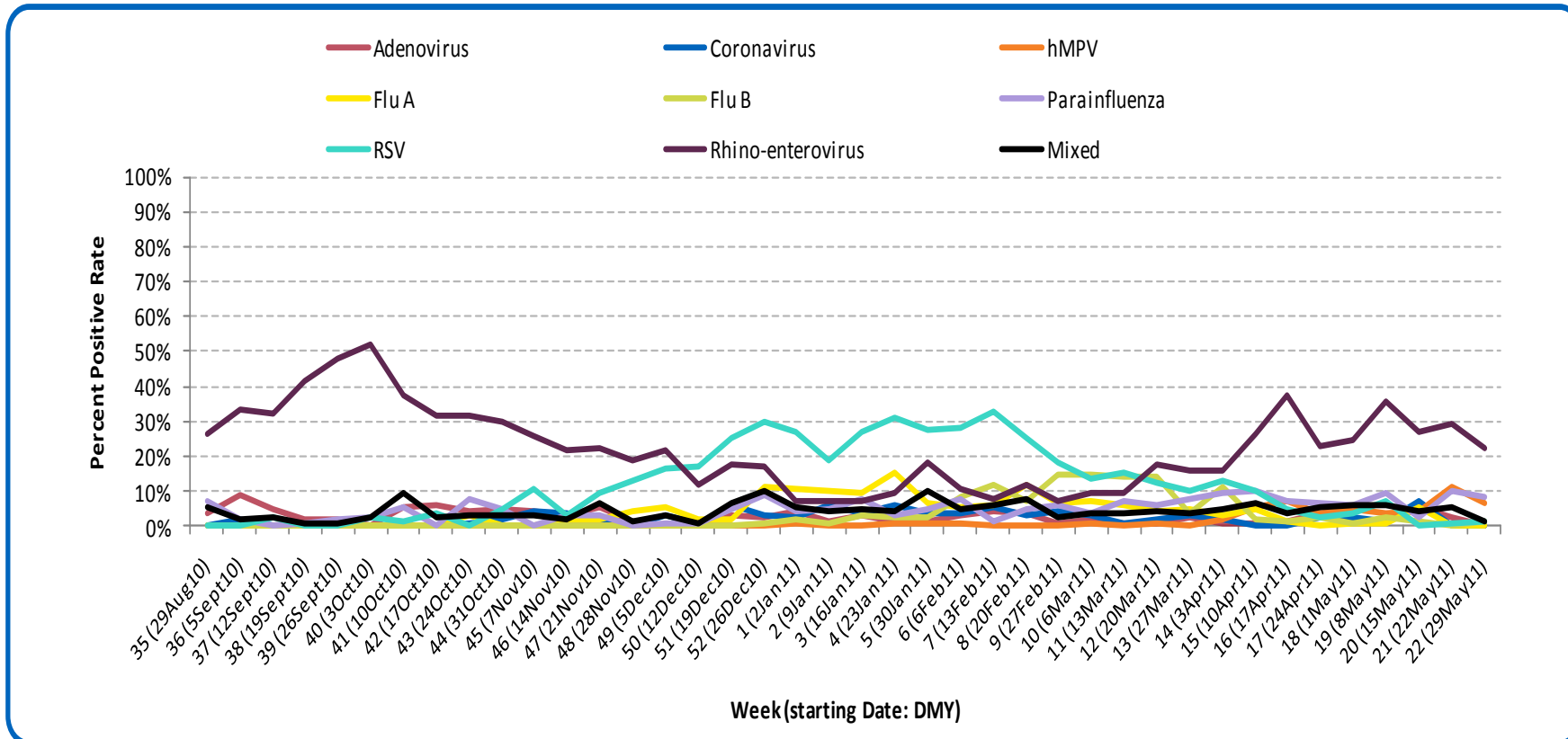
SURVEILLANCE AND HEALTH STATUS ASSESSMENT

Public Health Surveillance
Report Date: June 7, 2011

An influenza report targeted to the general public is available at: <http://www.health.alberta.ca/health-info/influenza-evidence.html>

[Back to start of section](#)

Figure 3B: Respiratory specimen percent positive rates, by virus type, by week, Calgary Zone (2010-2011)



Source: DIAL – Provincial Laboratory (includes cases with positive respiratory specimens received on or before June 4, 2011)
For more information on data definitions and sources see [Annex: Data Notes section at the end of this report](#)

SURVEILLANCE AND HEALTH STATUS ASSESSMENT

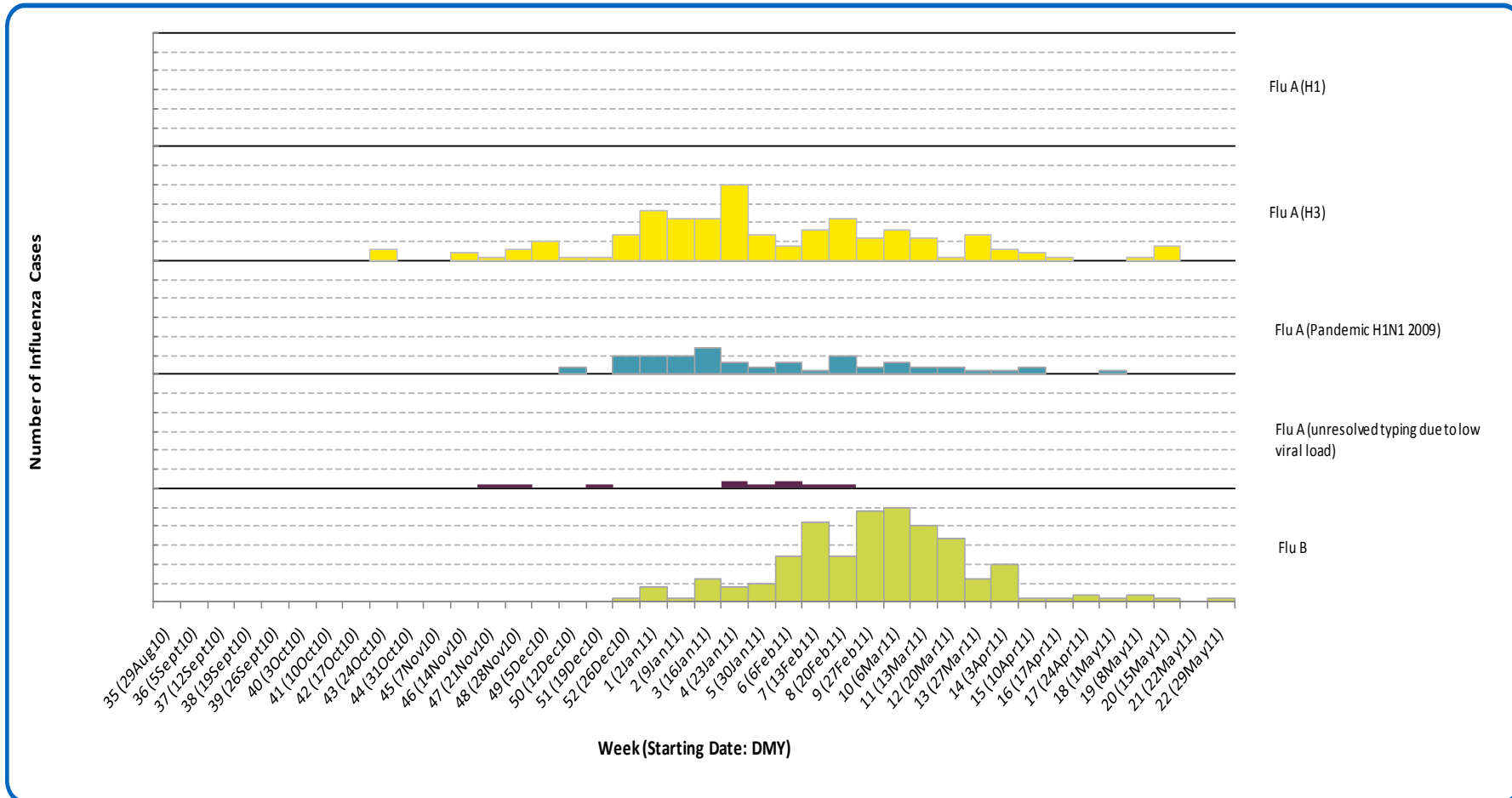
Public Health Surveillance

Report Date: June 7, 2011

An influenza report targeted to the general public is available at: <http://www.health.alberta.ca/health-info/influenza-evidence.html>

[Back to start of section](#)

Figure 3C: Laboratory confirmed influenza cases, by subtype, by week specimen received, Calgary Zone (2010-2011)



*Note: Five specimens were positive for influenza A or B and one or more other virus type(s). One specimen was positive for both influenza A & B. Source: Outbreak Response Toolkit (includes cases with positive respiratory specimens received on or before June 4, 2011). For more information on data definitions and sources see [Annex: Data Notes section at the end of this report](#)

SURVEILLANCE AND HEALTH STATUS ASSESSMENT

Public Health Surveillance
Report Date: June 7, 2011

An influenza report targeted to the general public is available at: <http://www.health.alberta.ca/health-info/influenza-evidence.html>

[Back to start of section](#)

Table 3A: New influenza cases (and age specific rates), by subtype, by age group, Calgary Zone (Weeks 21 & 22: May 22 - June 4, 2011)

	Flu A (Seasonal-H1)		Flu A (Seasonal-H3)		Flu A (Pandemic H1N1 2009)		Flu A (unresolved typing due to low viral load)		Flu B		Total	
	#	Rate (per 10,000)	#	Rate (per 10,000)	#	Rate (per 10,000)	#	Rate (per 10,000)	#	Rate (per 10,000)	#	Rate (per 10,000)
0 to <2 years	0	0.0	0	0.0	0	0.0	0	0.0	0	0.0	0	0.0
2 to <5 years	0	0.0	0	0.0	0	0.0	0	0.0	0	0.0	0	0.0
5 to <9 years	0	0.0	0	0.0	0	0.0	0	0.0	0	0.0	0	0.0
9 to <18 years	0	0.0	0	0.0	0	0.0	0	0.0	0	0.0	0	0.0
18 to <65 years	0	0.0	0	0.0	0	0.0	0	0.0	1	0.0	1	<0.1
65 to <75 years	0	0.0	0	0.0	0	0.0	0	0.0	0	0.0	0	0.0
75+ years	0	0.0	0	0.0	0	0.0	0	0.0	0	0.0	0	0.0
Total	0	0.0	0	0.0	0	0.0	0	0.0	1	<0.1	1	<0.1

Table 3B: Cumulative influenza cases (and age specific rates), by subtype, by age group, Calgary Zone (Aug 29, 2010 – June 4, 2011)

	Flu A (Seasonal-H1)		Flu A (Seasonal-H3)		Flu A (Pandemic H1N1 2009)		Flu A (unresolved typing due to low viral load)		Flu B		Total	
	#	Rate (per 10,000)	#	Rate (per 10,000)	#	Rate (per 10,000)	#	Rate (per 10,000)	#	Rate (per 10,000)	#	Rate (per 10,000)
0 to <2 years	0	0.0	18	4.8	7	1.9	1	0.3	20	5.3	46	12.2
2 to <5 years	0	0.0	13	2.4	3	0.6	1	0.2	19	3.5	36	6.7
5 to <9 years	0	0.0	9	1.4	1	0.2	2	0.3	30	4.6	42	6.5
9 to <18 years	0	0.0	10	0.7	1	0.1	2	0.1	44	3.0	57	3.9
18 to <65 years	0	0.0	65	0.7	39	0.4	3	<0.1	61	0.7	168	1.8
65 to <75 years	0	0.0	10	1.4	1	0.1	0	0.0	2	0.3	13	1.8
75+ years	0	0.0	22	3.6	0	0.0	1	0.2	1	0.2	24	3.9
Total	0	0.0	147	1.1	52	0.4	10	0.1	177	1.3	386	2.8

Source for tables 3A & 3B: Outbreak Response Toolkit (includes cases with positive respiratory specimens received on or before June 4, 2011).

Population data values used to calculate rates are for June 30, 2009 and are estimated using actual population values from the Alberta Health Care Insurance Plan (AHCIP) Registration File as of March 31, 2009.

For more information on data definitions and sources see [Annex: Data Notes section at the end of this report](#)

SURVEILLANCE AND HEALTH STATUS ASSESSMENT

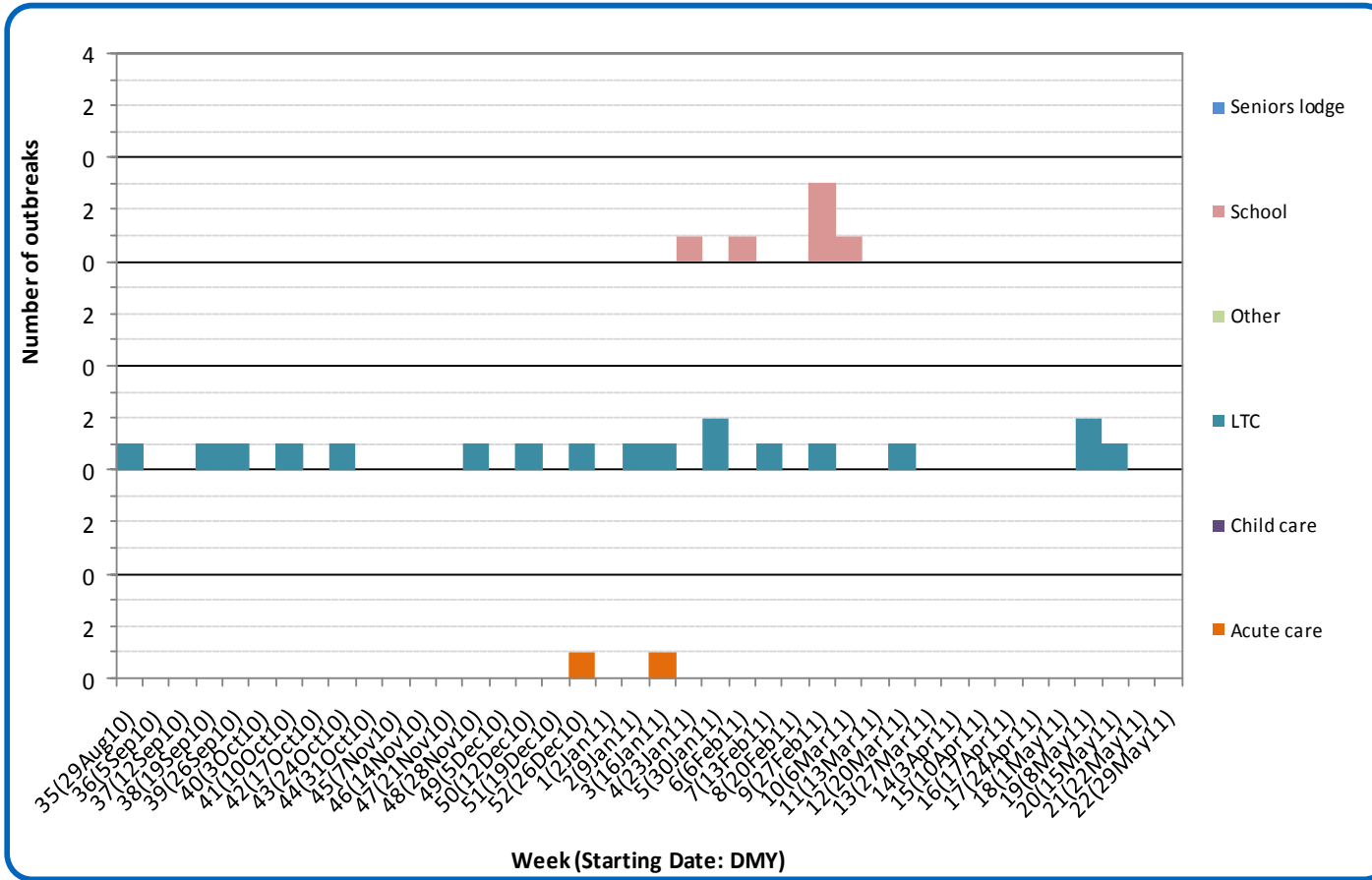
Public Health Surveillance

Report Date: June 7, 2011

An influenza report targeted to the general public is available at: <http://www.health.alberta.ca/health-info/influenza-evidence.html>

[Back to start of section](#)

Figure 3D: Respiratory outbreaks, by facility type, by onset week, Calgary Zone (2010-2011; school outbreaks may not have a laboratory confirmation)



Source: Alberta Outbreak Reporting Form as of 23:59 on June 4, 2011. LTC stands for long term care facility. For more information on data definitions and sources see [Annex: Data Notes section at the end of this report](#)

SURVEILLANCE AND HEALTH STATUS ASSESSMENT

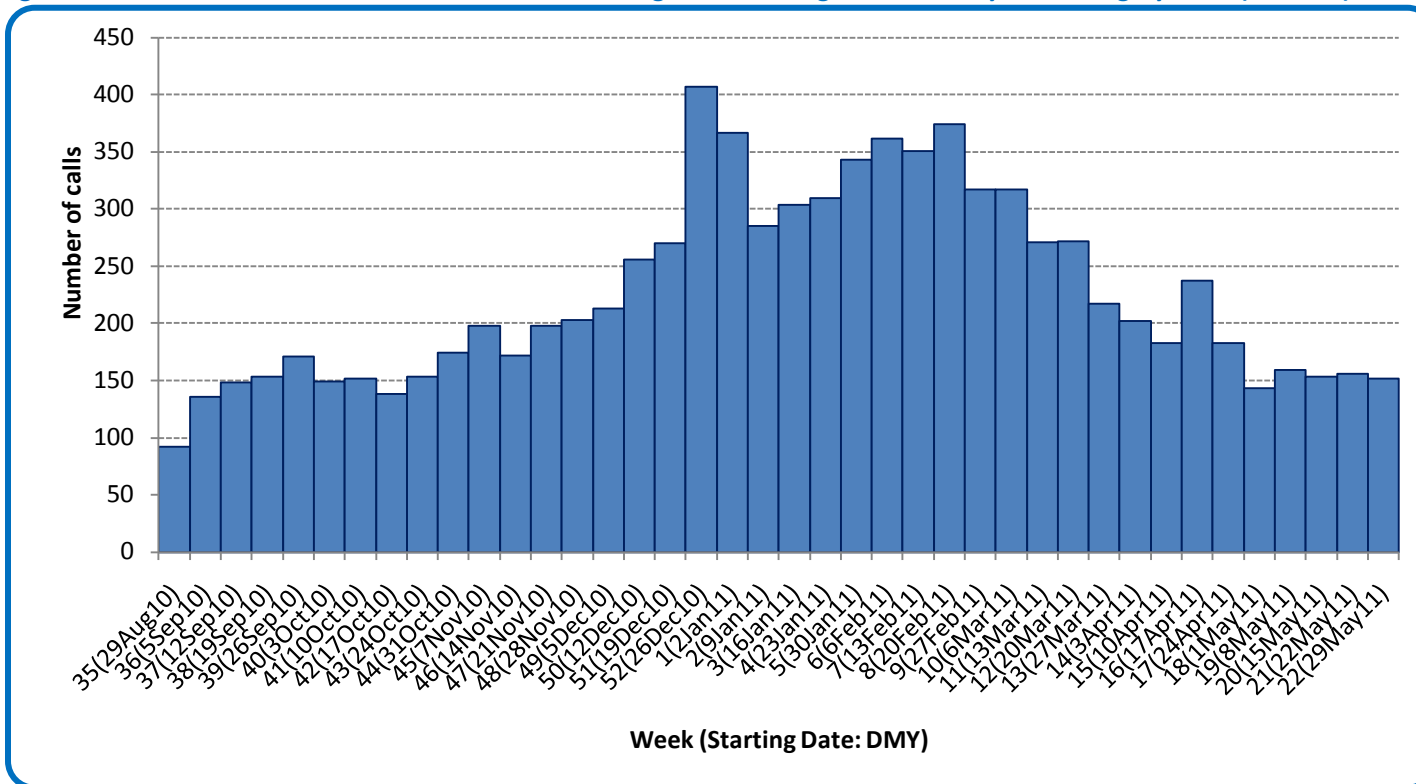
Public Health Surveillance

Report Date: June 7, 2011

An influenza report targeted to the general public is available at: <http://www.health.alberta.ca/health-info/influenza-evidence.html>

[Back to start of section](#)

Figure 3E: Number of calls to Health Link Alberta for cough or breathing difficulties, by week, Calgary Zone (2010-11)



Source: Sharp Focus - Health Link Alberta - via Alberta Real Time Syndromic Surveillance Net (ARTSSN) as of 23:59 on June 4, 2011. For more information on data definitions and sources see [Annex: Data Notes section at the end of this report](#)

SURVEILLANCE AND HEALTH STATUS ASSESSMENT

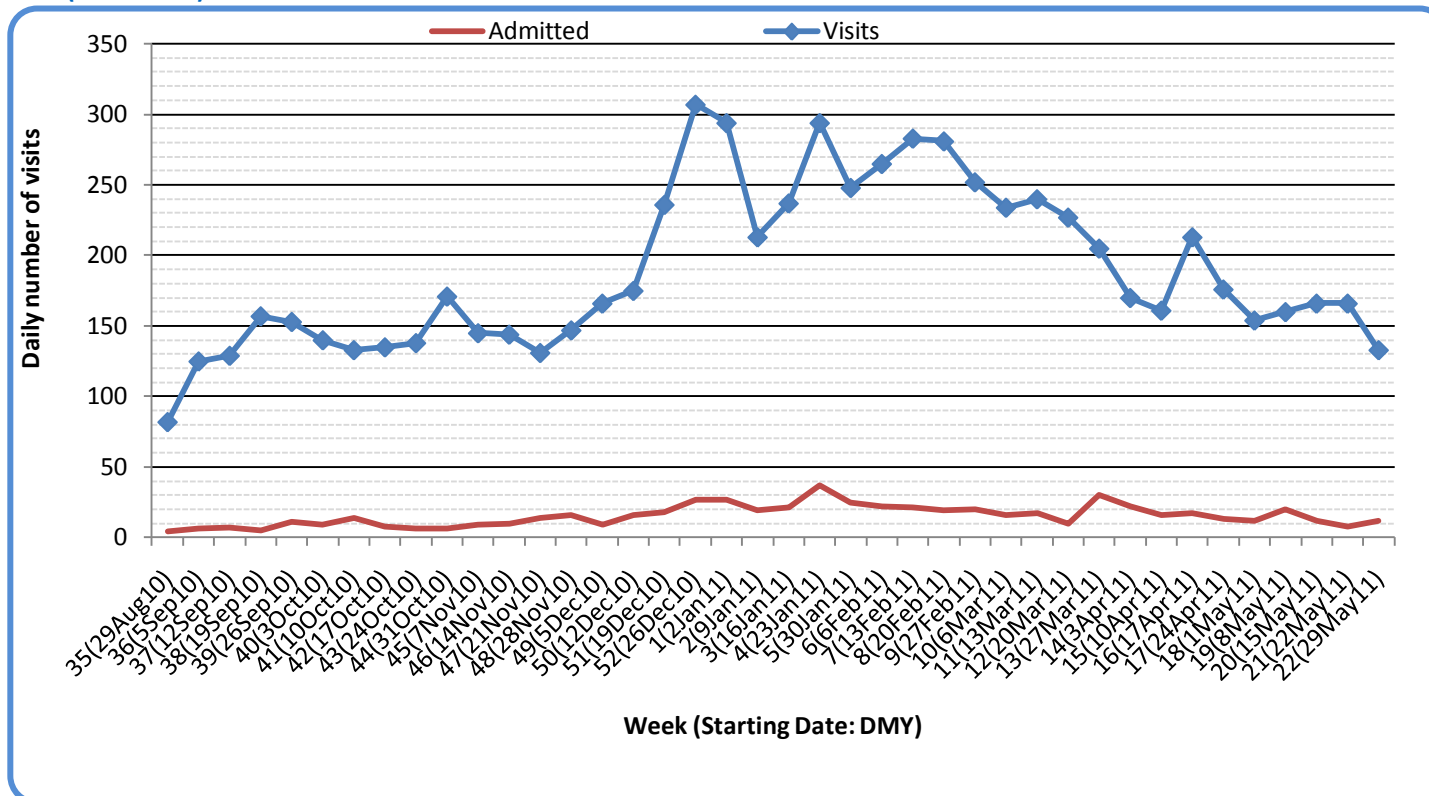
Public Health Surveillance

Report Date: June 7, 2011

An influenza report targeted to the general public is available at: <http://www.health.alberta.ca/health-info/influenza-evidence.html>

[Back to first start of section](#)

Figure 3F: Visits to urban emergency departments/urgent care centers in the City of Calgary with cough symptoms and admissions to hospitals, by visit week (2010-2011)



Source: Alberta Real Time Syndromic Surveillance Net (ARTSSN) as of 23:59 on June 4, 2011.
For more information on data definitions and sources see [Annex: Data Notes section at the end of this report](#)

SECTION 4: ZONE 3 - CENTRAL

[Back to first page](#)

Summary

Rhino-enterovirus and, to a lesser extent, adenovirus and influenza A (H3) continue to circulate at low levels in Central Zone.

Laboratory Data (see [Figure 4A](#), [Figure 4B](#), [Figure 4C](#), [Table 4A](#) & [Table 4B](#))

The number of new influenza cases being confirmed recently in Central Zone has been low relative to several weeks ago. Both rhino-enterovirus and adenovirus have shown slight increases in activity over the past 2 weeks. This season, the total number of influenza cases confirmed in Central Zone is 209 (52.2% have been identified as influenza A (H3), 10.5% as influenza A (H1N1) 2009, 35.4% as influenza B and 1.9% as influenza A with unresolved sub-typing). At this point in the season, the age-specific rate for confirmed cases of influenza (all types) is highest for infants under the age of 2 years, at 20.2 per 10,000.

Outbreaks (see [Figure 4D](#))

No new respiratory outbreaks have been reported or confirmed in Central Zone since the last update.

Health Link Alberta Calls (see [Figure 4E](#))

Generally, the number of calls to Health Link Alberta in Central Zone for cough or breathing difficulties has shown a declining trend in recent weeks. This indicator is currently at the same level seen early in the 2010-11 influenza season.

Emergency Department/Urgent Care Center Visits and Hospital Admissions

There are no data available from this zone.

SURVEILLANCE AND HEALTH STATUS ASSESSMENT

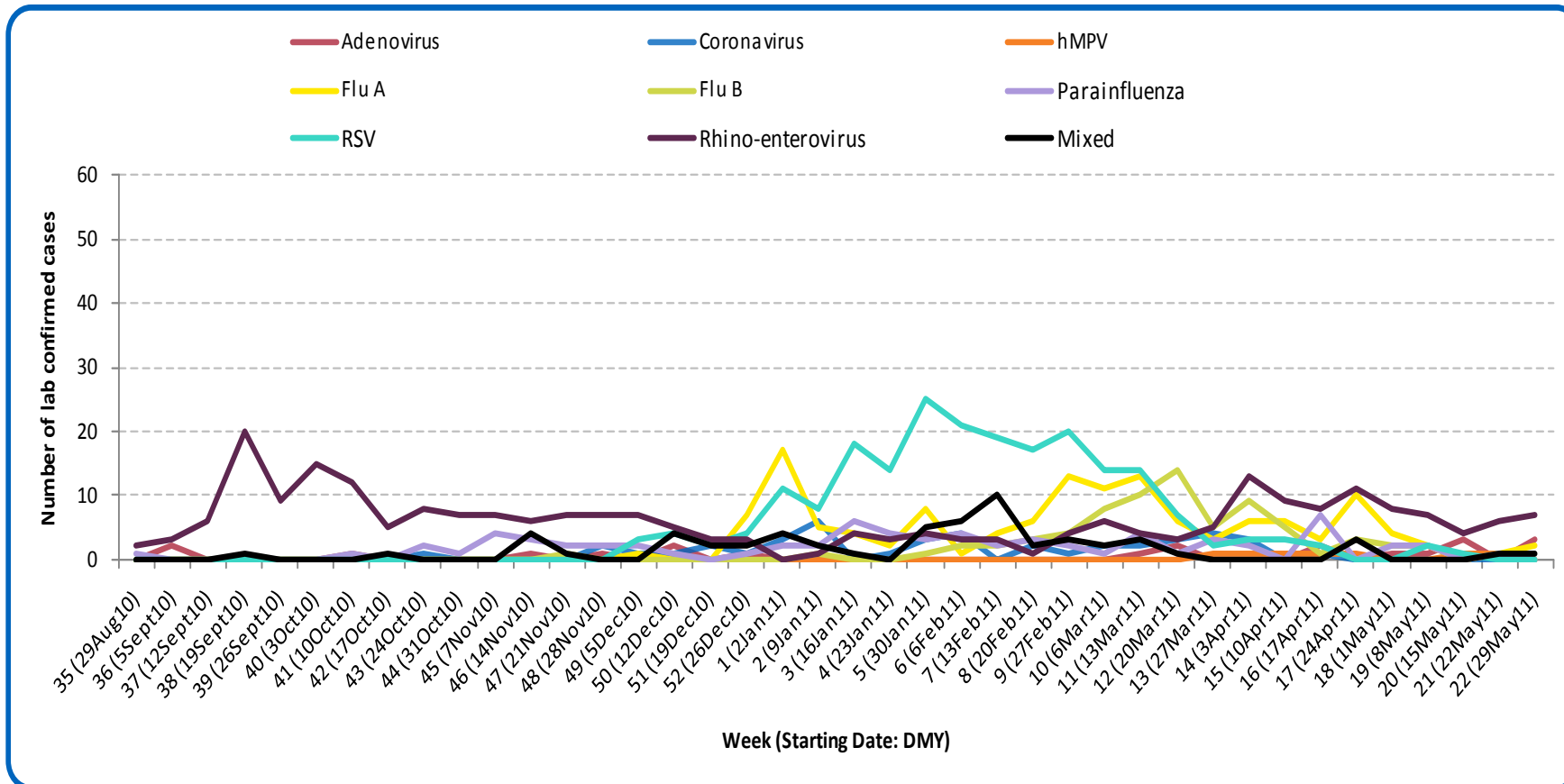
Public Health Surveillance

Report Date: June 7, 2011

An influenza report targeted to the general public is available at: <http://www.health.alberta.ca/health-info/influenza-evidence.html>

[Back to start of section](#)

Figure 4A: Laboratory confirmed respiratory virus cases, by virus type, by week, Central Zone (2010-2011)



Sources: DIAL – Provincial Laboratory and the Outbreak Response Toolkit (includes cases with positive respiratory specimens received on or before June 4, 2011). For more information on data definitions and sources see [Annex: Data Notes section at the end of this report](#)

SURVEILLANCE AND HEALTH STATUS ASSESSMENT

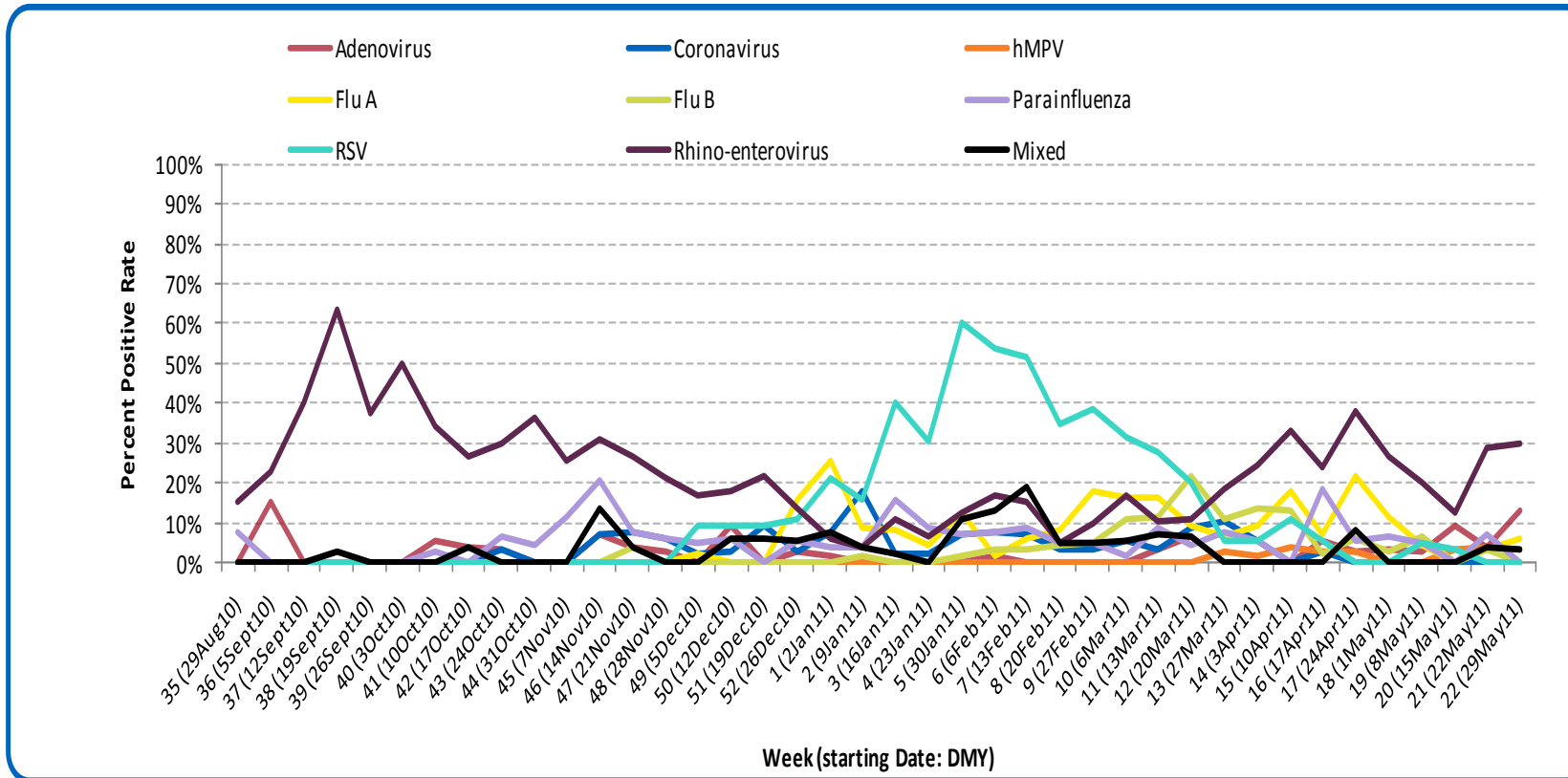
Public Health Surveillance

Report Date: June 7, 2011

An influenza report targeted to the general public is available at: <http://www.health.alberta.ca/health-info/influenza-evidence.html>

[Back to start of section](#)

Figure 4B: Respiratory specimen percent positive rates, by virus type, by week, Central Zone (2010-2011)



Source: DIAL – Provincial Laboratory (includes cases with positive respiratory specimens received on or before June 4, 2011)
For more information on data definitions and sources see [Annex: Data Notes section at the end of this report](#)

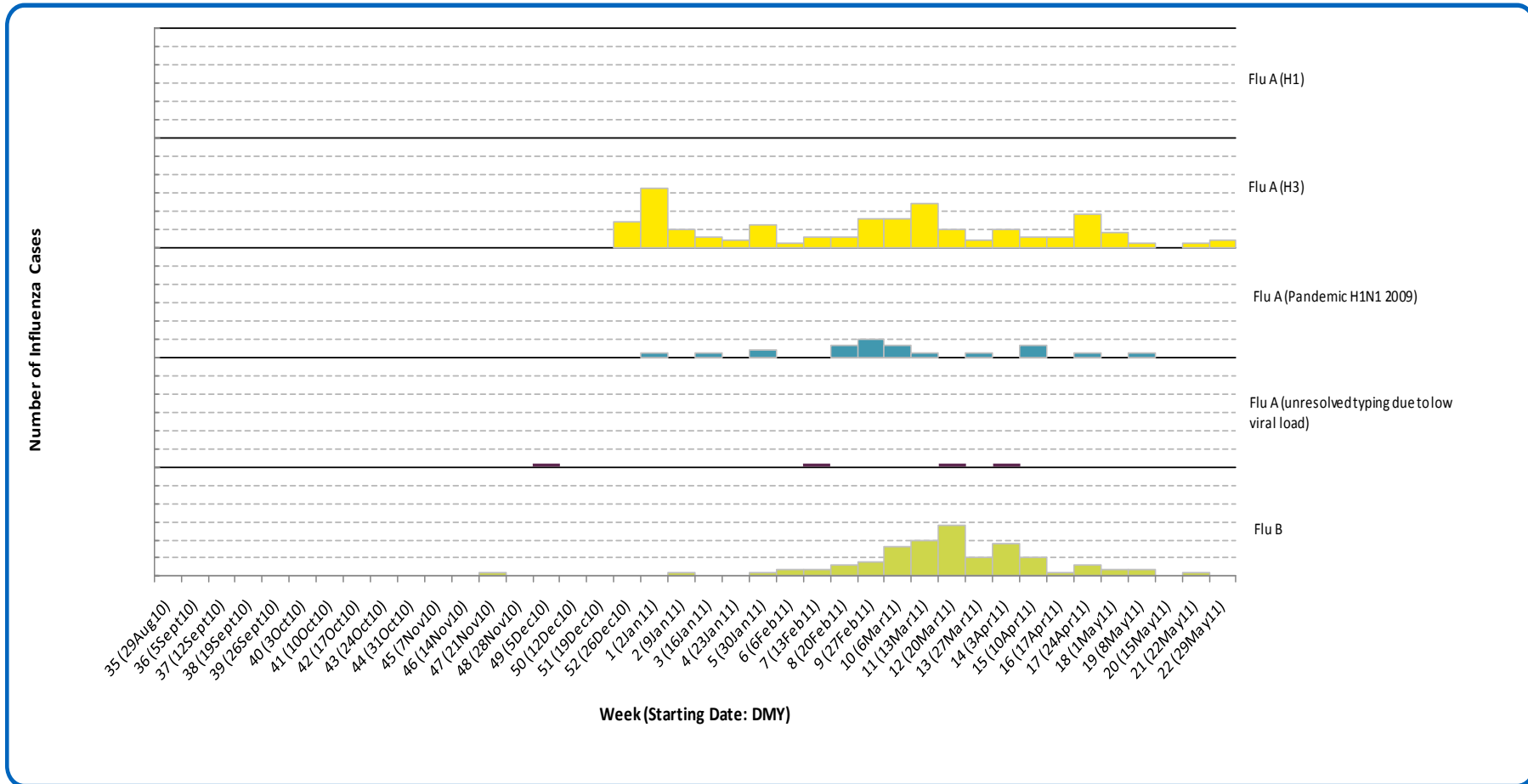
SURVEILLANCE AND HEALTH STATUS ASSESSMENT

Public Health Surveillance
Report Date: June 7, 2011

An influenza report targeted to the general public is available at: <http://www.health.alberta.ca/health-info/influenza-evidence.html>

[Back to start of section](#)

Figure 4C: Laboratory confirmed influenza cases, by subtype, by week specimen received, Central Zone (2010-2011)



*Note: Seven specimens were positive for influenza A or B and one or more other virus type(s).

Source: Outbreak Response Toolkit (includes cases with positive respiratory specimens received on or before June 4, 2011).

For more information on data definitions and sources see [Annex: Data Notes section at the end of this report](#)

SURVEILLANCE AND HEALTH STATUS ASSESSMENT

Public Health Surveillance

Report Date: June 7, 2011

An influenza report targeted to the general public is available at: <http://www.health.alberta.ca/health-info/influenza-evidence.html>

[Back to start of section](#)

Table 4A: New influenza cases (and age specific rates), by subtype, by age group, Central Zone (Weeks 21 & 22: May 22 - June 4, 2011)

	Flu A (Seasonal-H1)		Flu A (Seasonal-H3)		Flu A (Pandemic H1N1 2009)		Flu A (unresolved typing due to low viral load)		Flu B		Total	
	#	Rate (per 10,000)	#	Rate (per 10,000)	#	Rate (per 10,000)	#	Rate (per 10,000)	#	Rate (per 10,000)	#	Rate (per 10,000)
0 to <2 years	0	0.0	0	0.0	0	0.0	0	0.0	0	0.0	0	0.0
2 to <5 years	0	0.0	1	0.6	0	0.0	0	0.0	0	0.0	1	0.6
5 to <9 years	0	0.0	1	0.4	0	0.0	0	0.0	0	0.0	1	0.4
9 to <18 years	0	0.0	0	0.0	0	0.0	0	0.0	1	0.2	1	0.2
18 to <65 years	0	0.0	1	<0.1	0	0.0	0	0.0	0	0.0	1	<0.1
65 to <75 years	0	0.0	0	0.0	0	0.0	0	0.0	0	0.0	0	0.0
75+ years	0	0.0	0	0.0	0	0.0	0	0.0	0	0.0	0	0.0
Total	0	0.0	3	0.1	0	0.0	0	0.0	1	<0.1	4	0.1

Table 4B: Cumulative influenza cases (and age specific rates), by subtype, by age group, Central Zone (Aug 29, 2010 – June 4, 2011)

	Flu A (Seasonal-H1)		Flu A (Seasonal-H3)		Flu A (Pandemic H1N1 2009)		Flu A (unresolved typing due to low viral load)		Flu B		Total	
	#	Rate (per 10,000)	#	Rate (per 10,000)	#	Rate (per 10,000)	#	Rate (per 10,000)	#	Rate (per 10,000)	#	Rate (per 10,000)
0 to <2 years	0	0.0	11	8.9	0	0.0	0	0.0	14	11.3	25	20.2
2 to <5 years	0	0.0	4	2.2	2	1.1	0	0.0	8	4.4	14	7.7
5 to <9 years	0	0.0	6	2.7	0	0.0	0	0.0	10	4.4	16	7.1
9 to <18 years	0	0.0	3	0.6	2	0.4	0	0.0	10	1.9	15	2.8
18 to <65 years	0	0.0	41	1.5	18	0.6	3	0.1	26	0.9	88	3.1
65 to <75 years	0	0.0	3	1.0	0	0.0	0	0.0	4	1.3	7	2.3
75+ years	0	0.0	41	14.9	0	0.0	1	0.4	2	0.7	44	16.0
Total	0	0.0	109	2.4	22	0.5	4	0.1	74	1.7	209	4.7

Source for Tables 4A: Outbreak Response Toolkit (includes cases with positive respiratory specimens received on or before June 4, 2011).

Population data values used to calculate rates are for June 30, 2009 and are estimated using actual population values from the Alberta Health Care Insurance Plan (AHCIP) Registration File as of March 31, 2009.

For more information on data definitions and sources see [Annex: Data Notes section at the end of this report](#)

SURVEILLANCE AND HEALTH STATUS ASSESSMENT

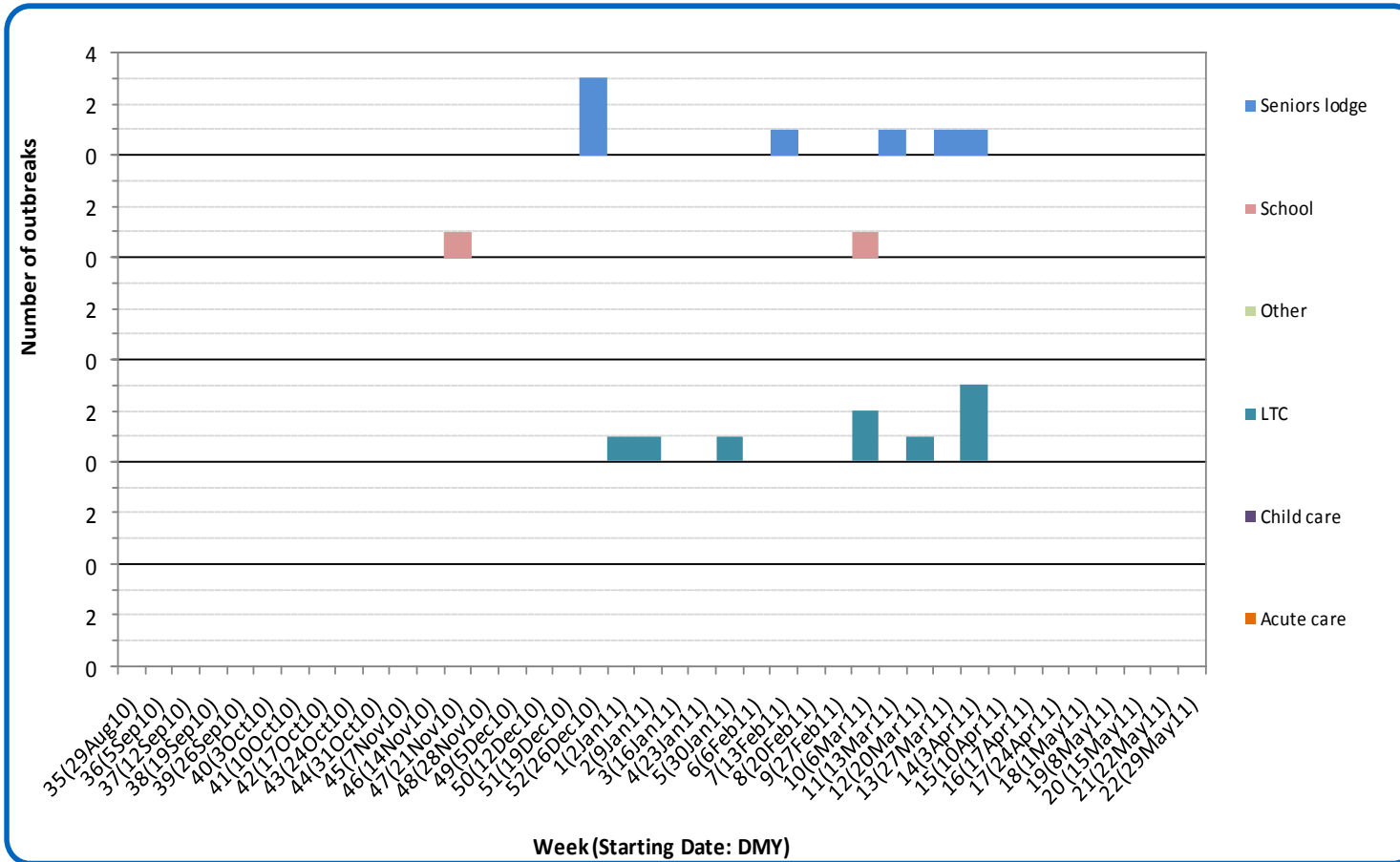
Public Health Surveillance

Report Date: June 7, 2011

An influenza report targeted to the general public is available at: <http://www.health.alberta.ca/health-info/influenza-evidence.html>

[Back to start of section](#)

Figure 4D: Respiratory outbreaks, by facility type, by onset week, Central Zone (2010-2011; school outbreaks may not have a laboratory confirmation)



Source: Alberta Outbreak Reporting Form as of 23:59 on June 4, 2011.

For more information on data definitions and sources see [Annex: Data Notes section at the end of this report](#). LTC stands for long term care facility.

SURVEILLANCE AND HEALTH STATUS ASSESSMENT

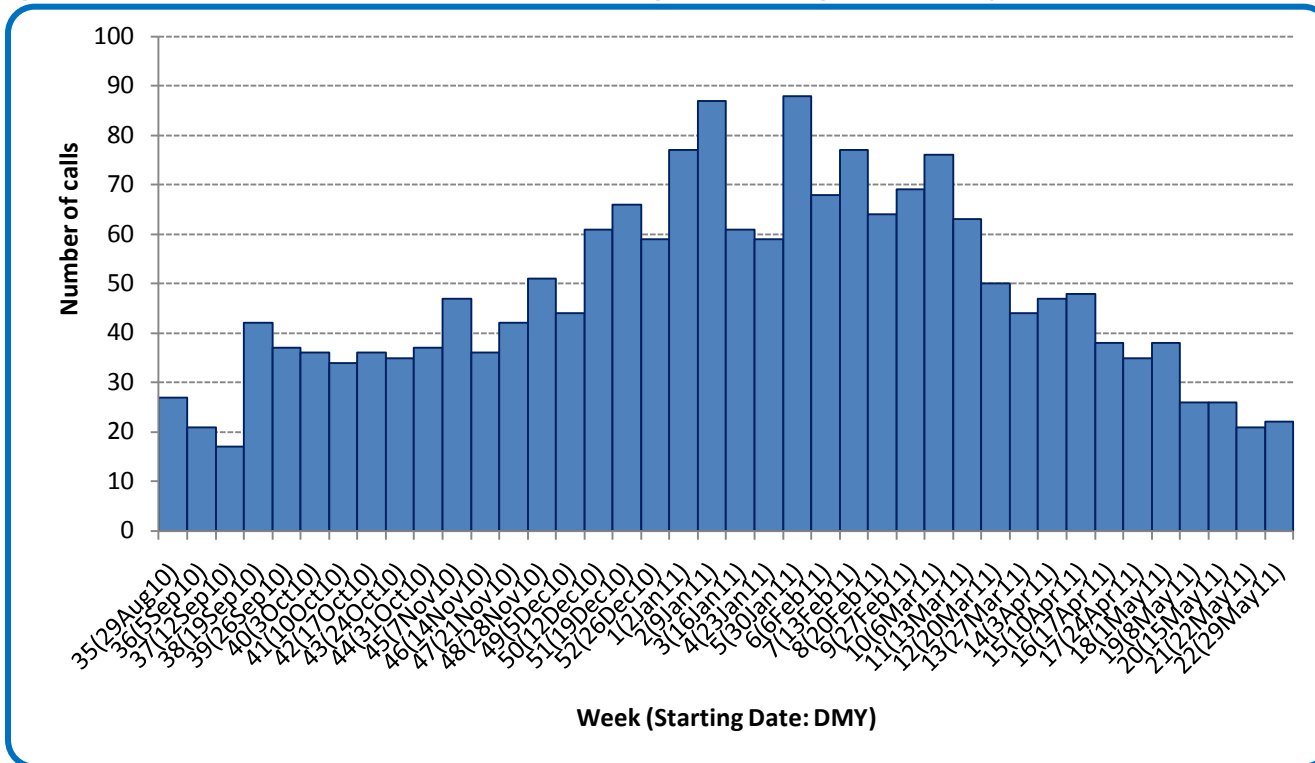
Public Health Surveillance

Report Date: June 7, 2011

An influenza report targeted to the general public is available at: <http://www.health.alberta.ca/health-info/influenza-evidence.html>

[Back to start of section](#)

Figure 4E: Number of calls to Health Link Alberta for cough or breathing difficulties, by week, Central Zone (2010-11)



Source: Sharp Focus - Health Link Alberta - via Alberta Real Time Syndromic Surveillance Net (ARTSSN) as of 23:59 on June 4, 2011. For more information on data definitions and sources see [Annex: Data Notes section at the end of this report](#)

SURVEILLANCE AND HEALTH STATUS ASSESSMENT

Public Health Surveillance

Report Date: June 7, 2011

An influenza report targeted to the general public is available at: <http://www.health.alberta.ca/health-info/influenza-evidence.html>

SECTION 5: ZONE 4 – EDMONTON

[Back to first page](#)

Summary

With the exception of an increase in adenovirus activity in the past few weeks, respiratory virus activity appears to be declining in Edmonton Zone.

Laboratory Data (see [Figure 5A](#), [Figure 5B](#), [Figure 5C](#), [Table 5A](#) & [Table 5B](#))

Influenza activity continues to decline in Edmonton Zone. Rhino-enterovirus and adenovirus are currently the predominant respiratory viruses circulating, with adenovirus appearing to show an increasing trend in the past few weeks. As of the end of last week (June 4, 2011), the total number of influenza cases confirmed in this part of the province this season is 480 (38.8% have been identified as influenza A (H3), 16.0% as influenza A (H1N1) 2009, 42.9% as influenza B and 2.3% as influenza A with unresolved sub-typing). The age-specific rate for confirmed influenza (all types) for infants less than 2 years of age is higher compared to other age groups, at 25.5 per 10,000 (compared to 9.6 per 10,000 or lower for other age groups).

Outbreaks (see [Figure 5D](#))

Since the last update, no new respiratory outbreaks have been reported or confirmed in Edmonton Zone.

Health Link Alberta Calls (see [Figure 5E](#))

The number of calls to Health Link Alberta in Edmonton Zone for cough or breathing difficulties has been stable over the past few weeks.

Emergency Department/Urgent Care Center Visits and Hospital Admissions (See [Figure 5F](#))

The number of visits and hospital admissions for ILI at nine emergency departments/urgent care centers remained relatively unchanged in Week 22 (May 29-June 4, 2011) compared to the previous week. Generally, these indicators have been declining in recent weeks.

The number of visits and hospital admissions for cough/congestion symptoms at emergency departments/urgent care centers for cough/congestion symptoms decreased by 13% and 36%, respectively, in Week 22 (May 29-June 4, 2011) compared to the previous week. The trend for emergency department visits has been declining over the last several weeks, whereas the trend for hospital admissions has been fluctuating.

SURVEILLANCE AND HEALTH STATUS ASSESSMENT

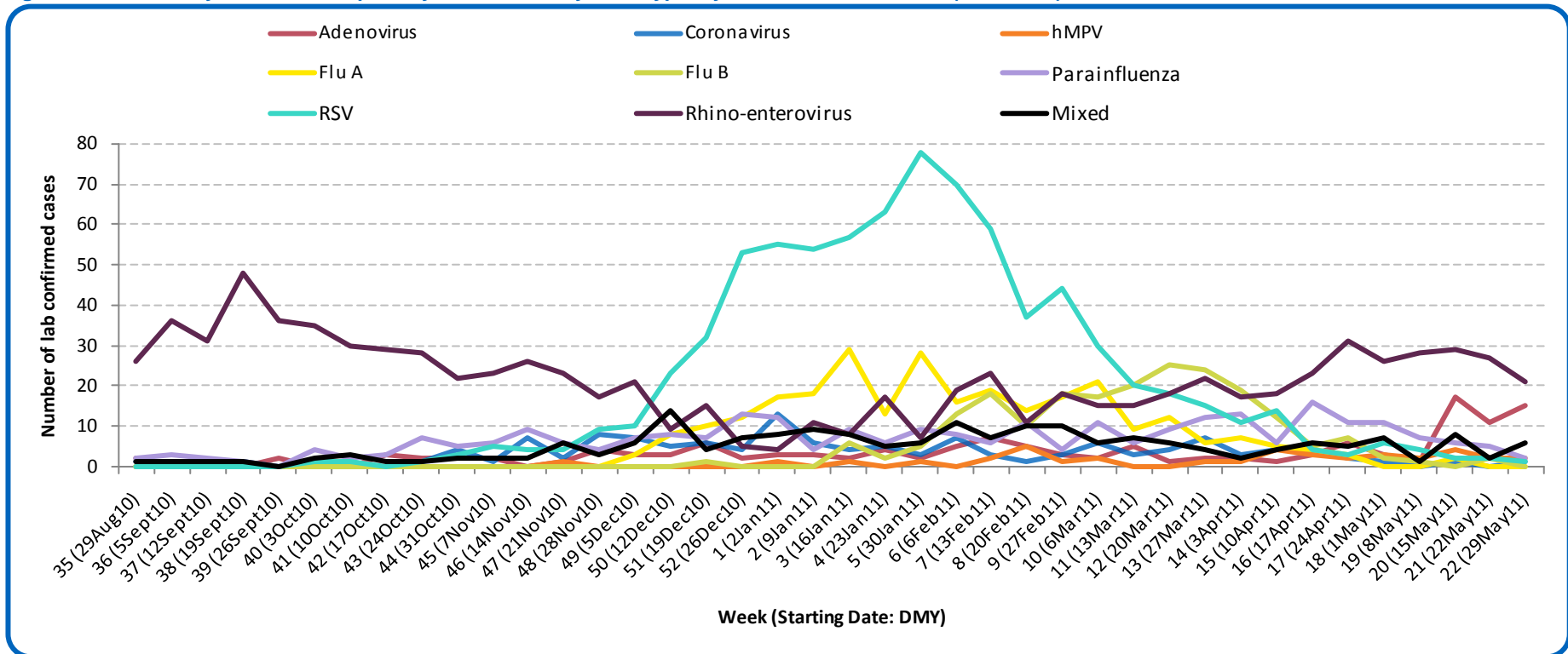
Public Health Surveillance

Report Date: June 7, 2011

An influenza report targeted to the general public is available at: <http://www.health.alberta.ca/health-info/influenza-evidence.html>

[Back to start of section](#)

Figure 5A: Laboratory confirmed respiratory virus cases, by virus type, by week, Edmonton Zone (2010-2011)



Sources: DIAL – Provincial Laboratory and the Outbreak Response Toolkit (includes cases with positive respiratory specimens received on or before June 4, 2011). For more information on data definitions and sources see [Annex: Data Notes section at the end of this report](#)

SURVEILLANCE AND HEALTH STATUS ASSESSMENT

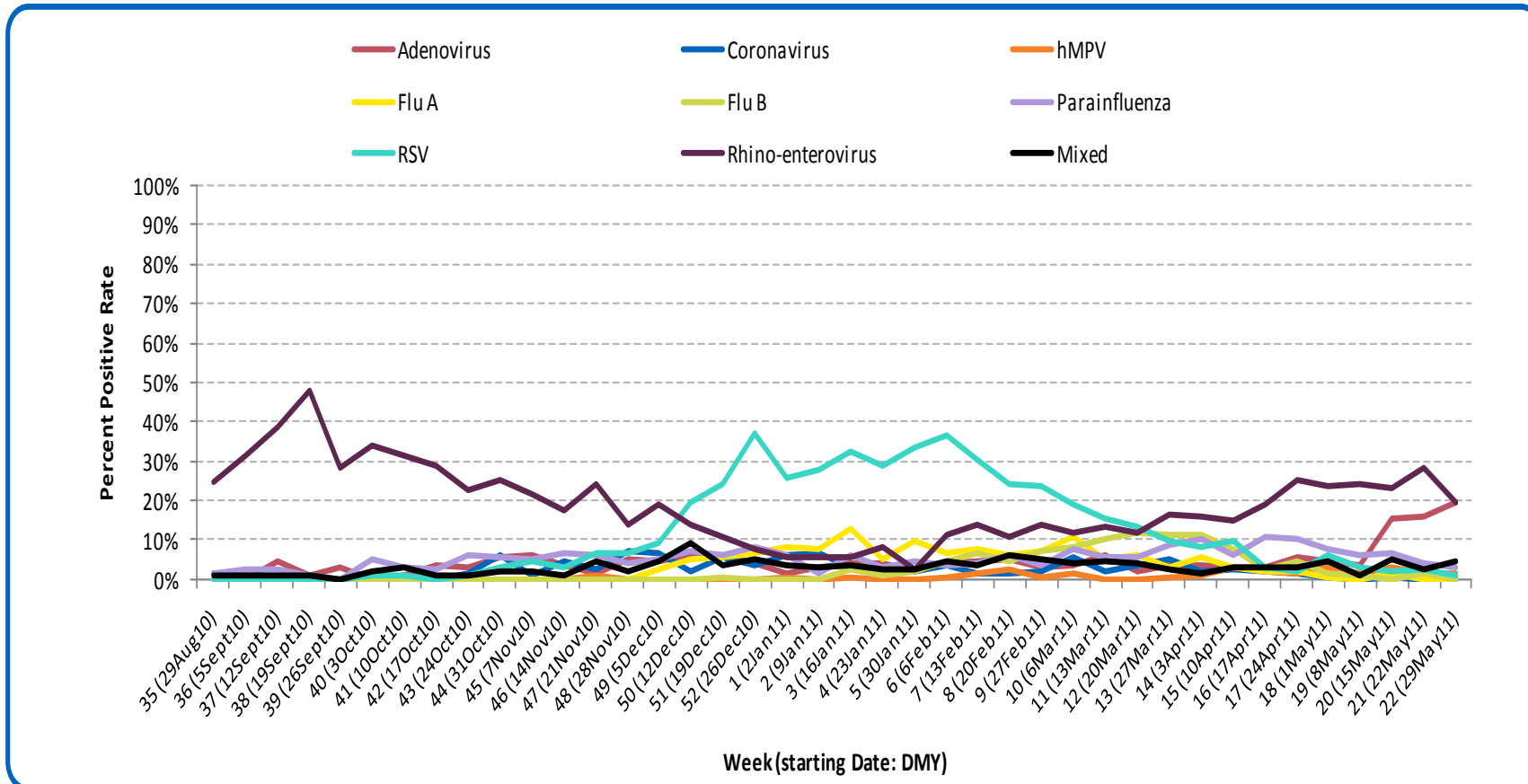
Public Health Surveillance

Report Date: June 7, 2011

An influenza report targeted to the general public is available at: <http://www.health.alberta.ca/health-info/influenza-evidence.html>

[Back to start of section](#)

Figure 5B: Respiratory specimen percent positive rates, by virus type, by week, Edmonton Zone (2010-2011)



Source: DIAL – Provincial Laboratory (includes cases with positive respiratory specimens received on or before June 4, 2011)
For more information on data definitions and sources see [Annex: Data Notes section at the end of this report](#)

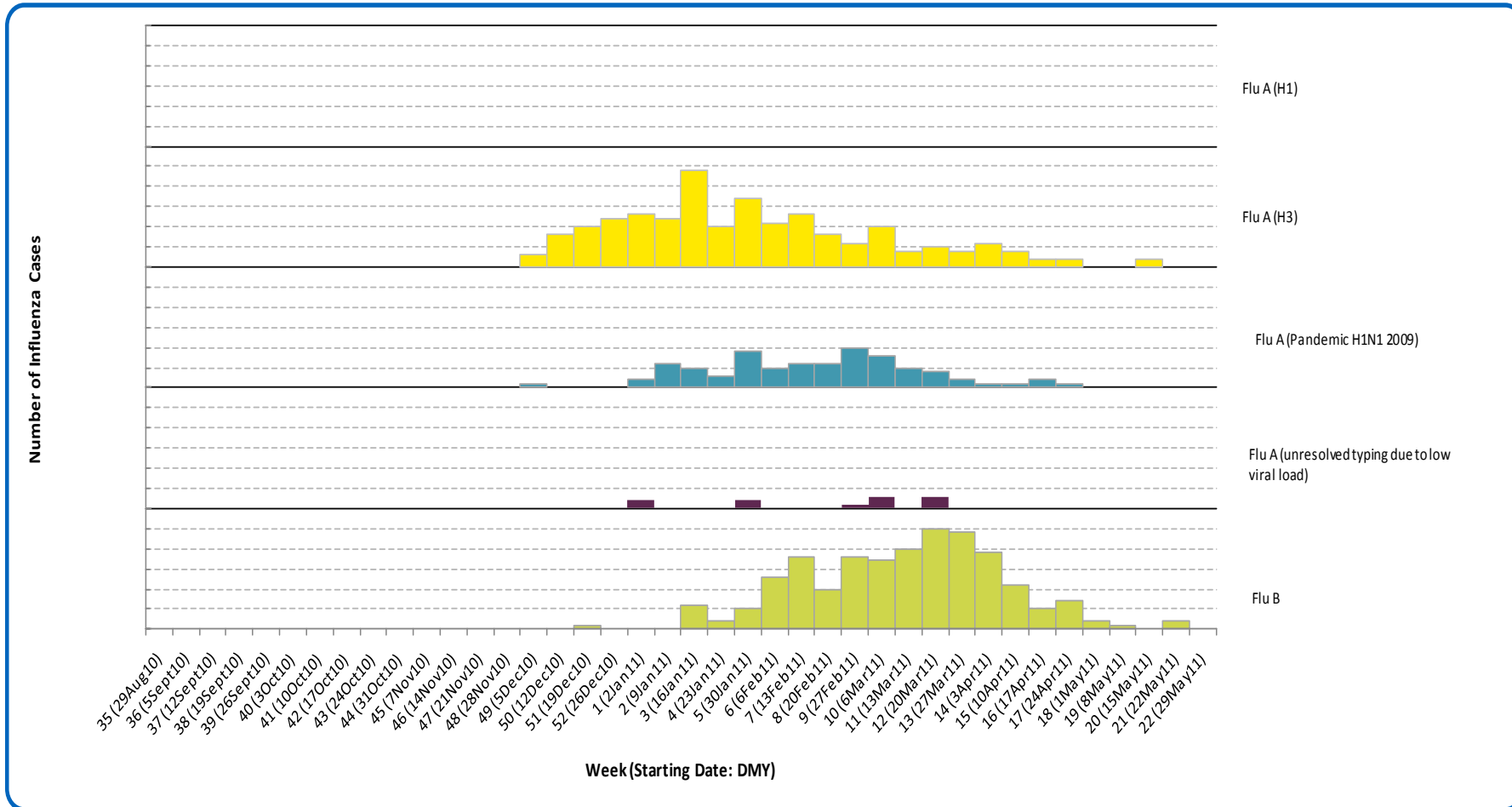
SURVEILLANCE AND HEALTH STATUS ASSESSMENT

Public Health Surveillance
Report Date: June 7, 2011

An influenza report targeted to the general public is available at: <http://www.health.alberta.ca/health-info/influenza-evidence.html>

[Back to start of section](#)

Figure 5C: Laboratory confirmed influenza cases, by subtype, by week specimen received, Edmonton Zone (2010-2011)



*Note: Six specimens were positive for influenza A or B and one or more other virus type(s). Three specimens were positive for both influenza A & B.
Source: Outbreak Response Toolkit (includes cases with positive respiratory specimens received on or before June 4, 2011).
For more information on data definitions and sources see [Annex: Data Notes section at the end of this report](#)

SURVEILLANCE AND HEALTH STATUS ASSESSMENT

Public Health Surveillance
Report Date: June 7, 2011

An influenza report targeted to the general public is available at: <http://www.health.alberta.ca/health-info/influenza-evidence.html>

[Back to start of section](#)

Table 5A: New influenza cases (and age specific rates), by subtype, by age group, Edmonton Zone (Weeks 21 & 22: May 29-June 4, 2011)

	Flu A (Seasonal-H1)		Flu A (Seasonal-H3)		Flu A (Pandemic H1N1 2009)		Flu A (unresolved typing due to low viral load)		Flu B		Total	
	#	Rate (per 10,000)	#	Rate (per 10,000)	#	Rate (per 10,000)	#	Rate (per 10,000)	#	Rate (per 10,000)	#	Rate (per 10,000)
0 to <2 years	0	0.0	0	0.0	0	0.0	0	0.0	0	0.0	0	0.0
2 to <5 years	0	0.0	0	0.0	0	0.0	0	0.0	0	0.0	0	0.0
5 to <9 years	0	0.0	0	0.0	0	0.0	0	0.0	0	0.0	0	0.0
9 to <18 years	0	0.0	0	0.0	0	0.0	0	0.0	0	0.0	0	0.0
18 to <65 years	0	0.0	0	0.0	0	0.0	0	0.0	0	0.0	0	0.0
65 to <75 years	0	0.0	0	0.0	0	0.0	0	0.0	0	0.0	0	0.0
75+ years	0	0.0	0	0.0	0	0.0	0	0.0	2	0.3	2	0.3
Total	0	0.0	0	0.0	0	0.0	0	0.0	2	<0.1	2	<0.1

Table 5B: Cumulative influenza cases (and age specific rates), by subtype, by age group, Edmonton Zone (Aug 29, 2010 – May 21, 2011)

	Flu A (Seasonal-H1)		Flu A (Seasonal-H3)		Flu A (Pandemic H1N1 2009)		Flu A (unresolved typing due to low viral load)		Flu B		Total	
	#	Rate (per 10,000)	#	Rate (per 10,000)	#	Rate (per 10,000)	#	Rate (per 10,000)	#	Rate (per 10,000)	#	Rate (per 10,000)
0 to <2 years	0	0.0	34	11.1	8	2.6	3	1.0	33	10.8	78	25.5
2 to <5 years	0	0.0	15	3.4	5	1.1	1	0.2	21	4.8	42	9.6
5 to <9 years	0	0.0	11	2.1	4	0.8	0	0.0	33	6.2	48	9.0
9 to <18 years	0	0.0	9	0.7	3	0.2	1	0.1	42	3.4	55	4.4
18 to <65 years	0	0.0	70	0.9	56	0.7	5	0.1	49	0.6	180	2.3
65 to <75 years	0	0.0	10	1.4	0	0.0	0	0.0	11	1.6	21	3.0
75+ years	0	0.0	37	6.1	1	0.2	1	0.2	17	2.8	56	9.2
Total	0	0.0	186	1.6	77	0.7	11	0.1	206	1.8	480	4.1

Source for tables 5A & 5B: Outbreak Response Toolkit (includes cases with positive respiratory specimens received on or before June 4, 2011).

Population data values used to calculate rates are for June 30, 2009 and are estimated using actual population values from the Alberta Health Care Insurance Plan (AHCIP) Registration File as of March 31, 2009.

For more information on data definitions and sources see [Annex: Data Notes section at the end of this report](#)

SURVEILLANCE AND HEALTH STATUS ASSESSMENT

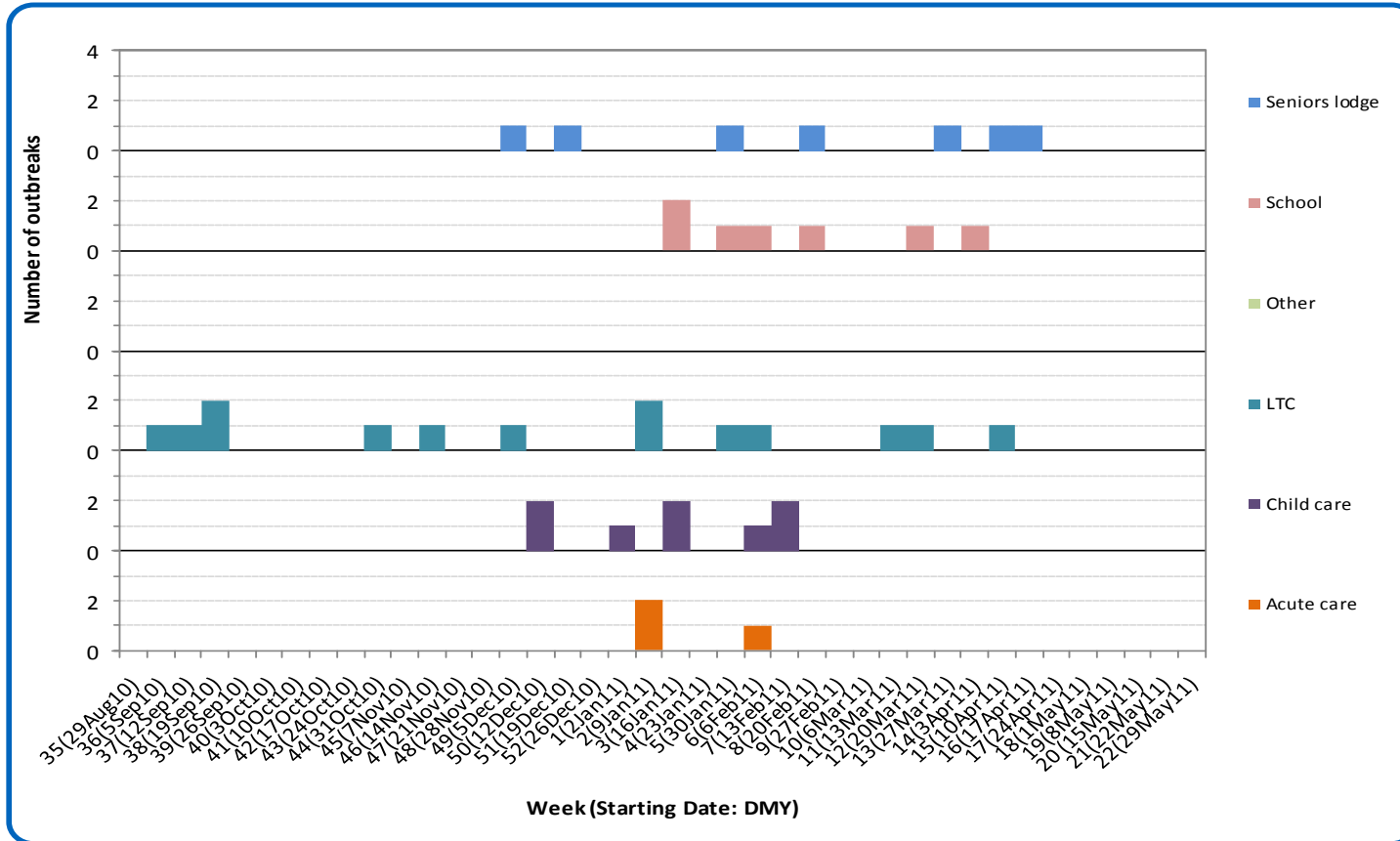
Public Health Surveillance

Report Date: June 7, 2011

An influenza report targeted to the general public is available at: <http://www.health.alberta.ca/health-info/influenza-evidence.html>

[Back to start of section](#)

Figure 5D: Respiratory outbreaks, by facility type, by onset week, Edmonton Zone (2010-2011; school outbreaks may not have a laboratory confirmation)



Source: Alberta Outbreak Reporting Form as of 23:59 on June 4, 2011. LTC stands for long term care facility. For more information on data definitions and sources see [Annex: Data Notes section at the end of this report](#)

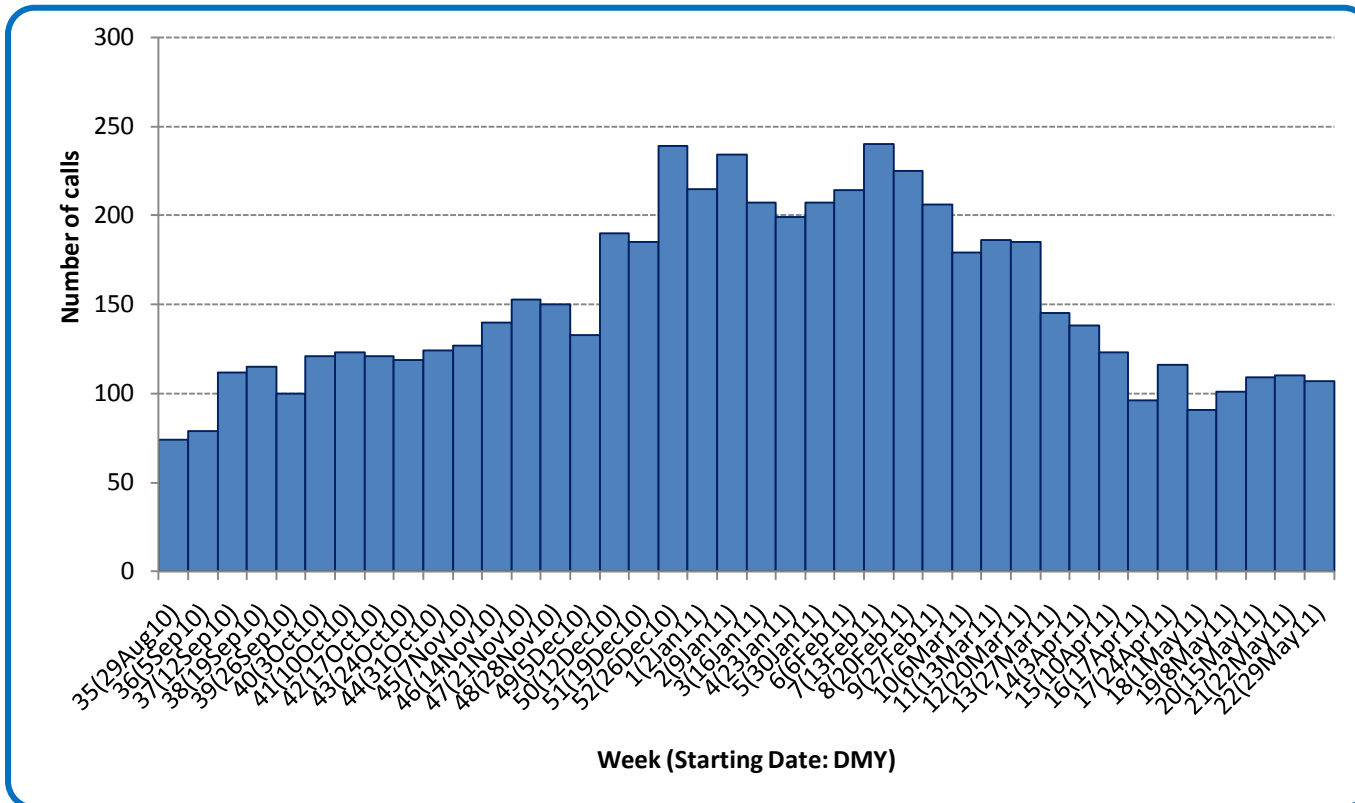
SURVEILLANCE AND HEALTH STATUS ASSESSMENT

Public Health Surveillance
Report Date: June 7, 2011

An influenza report targeted to the general public is available at: <http://www.health.alberta.ca/health-info/influenza-evidence.html>

[Back to start of section](#)

Figure 5E: Number of calls to Health Link Alberta for cough or breathing difficulties, by week, Edmonton Zone (2010-11)



Source: Sharp Focus - Health Link Alberta - via Alberta Real Time Syndromic Surveillance Net (ARTSSN) as of 23:59 on June 4, 2011. For more information on data definitions and sources see [Annex: Data Notes section at the end of this report](#)

SURVEILLANCE AND HEALTH STATUS ASSESSMENT

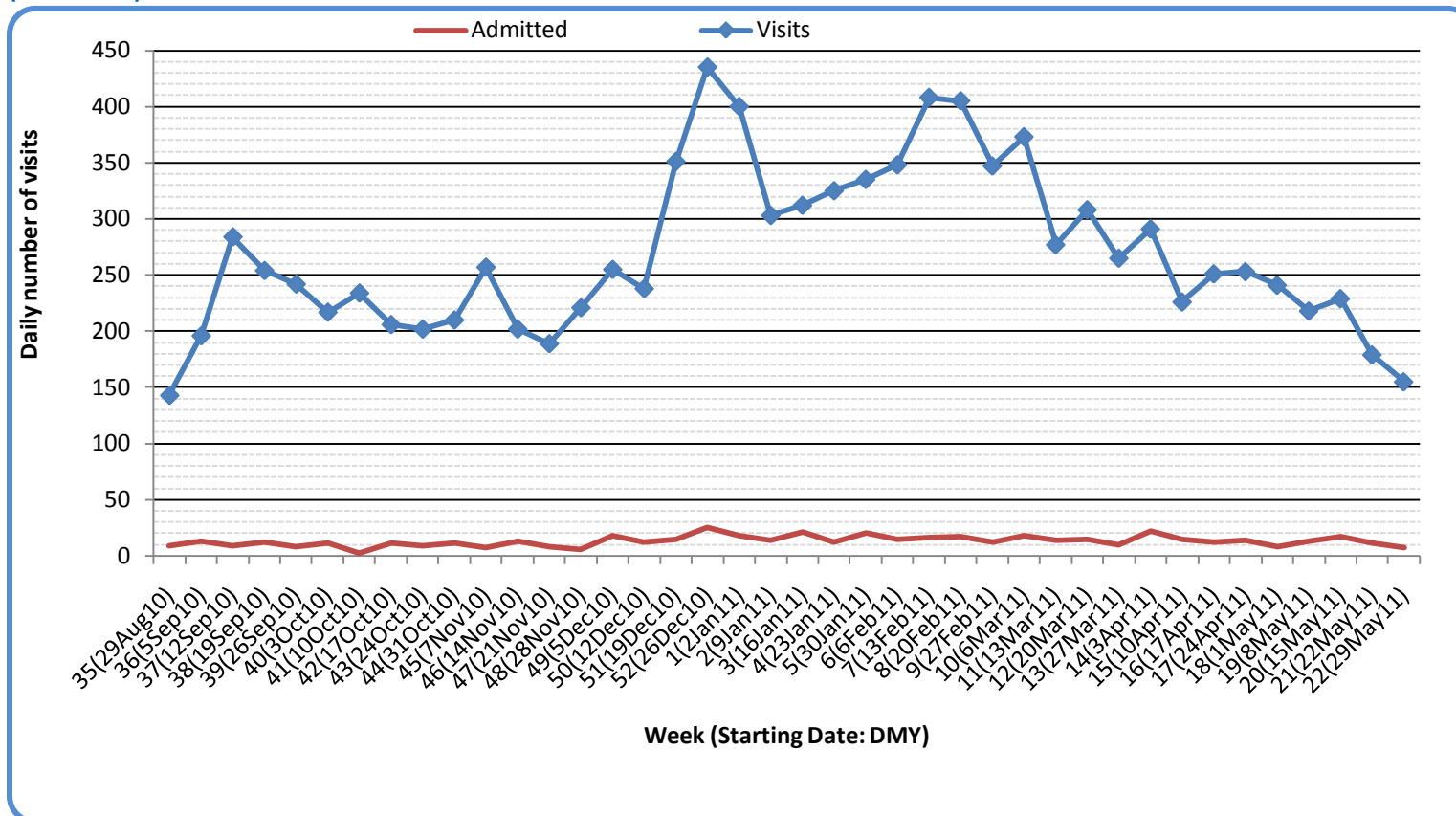
Public Health Surveillance

Report Date: June 7, 2011

An influenza report targeted to the general public is available at: <http://www.health.alberta.ca/health-info/influenza-evidence.html>

[Back to start of section](#)

Figure 5F: Visits to emergency departments/urgent care centers for cough/congestion and admissions to hospitals, Edmonton Zone, by visit week (2010-2011)



Source: Alberta Real Time Syndromic Surveillance (ARTSSN) as of 23:59 on June 4, 2011.
For more information on data definitions and sources see [Annex: Data Notes section at the end of this report](#)

SURVEILLANCE AND HEALTH STATUS ASSESSMENT

Public Health Surveillance

Report Date: June 7, 2011

An influenza report targeted to the general public is available at: <http://www.health.alberta.ca/health-info/influenza-evidence.html>

SECTION 6: ZONE 5 – NORTH

[Back to first page](#)

Summary

Despite continuing transmission of rhino-enterovirus, respiratory virus activity has generally been declining in North Zone.

Laboratory Data (see [Figure 6A](#), [Figure 6B](#), [Figure 6C](#) & [Table 6A](#))

No new cases of influenza have been confirmed in North Zone for the past 2 weeks. Rhino-enterovirus continues to circulate. So far this season, 294 cases of influenza have been confirmed in this part of the province (27.6% have been identified as influenza A (H3), 27.2% as influenza A (H1N1) 2009, 44.9% as influenza B and 0.3% as influenza A with unresolved sub-typing). At this point in time, the age specific rate for confirmed influenza (all types) among infants under the age of 2 years is much higher than the rate for any other age group (42.8 per 10,000 compared to 18.2 per 10,000 or lower).

Outbreaks (see [Figure 6D](#))

There have been no new respiratory outbreaks confirmed or reported in North Zone.

Health Link Alberta Calls (see [Figure 6E](#))

The number of calls to Health Link Alberta by residents of North Zone for cough or breathing difficulties has increased slightly over the past few weeks. This increase may be due, in part, to the recent fires in and around the Slave Lake area.

Emergency Department/Urgent Care Center Visits and Hospital Admissions

There are no data available for the North Zone.

SURVEILLANCE AND HEALTH STATUS ASSESSMENT

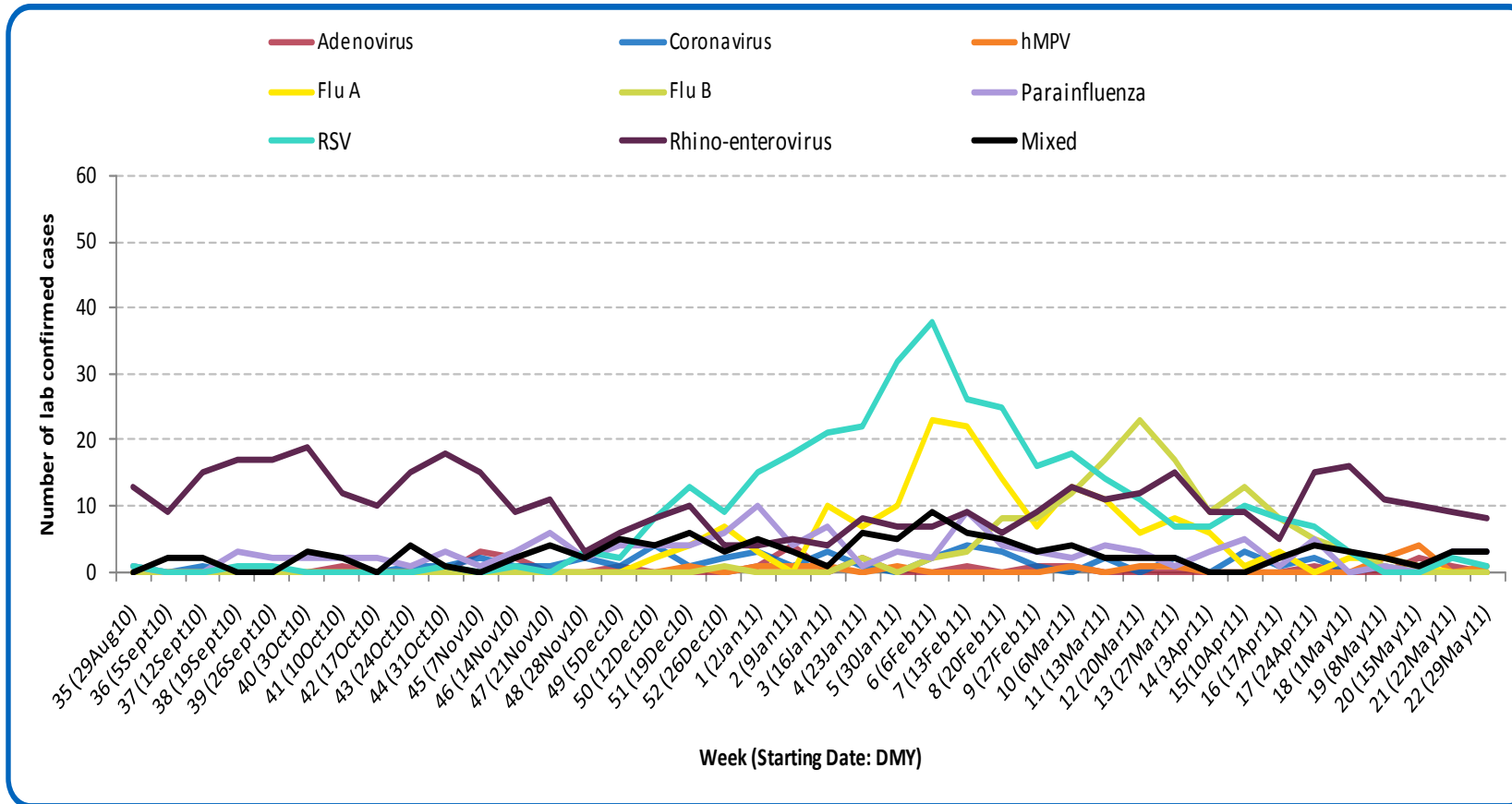
Public Health Surveillance

Report Date: June 7, 2011

An influenza report targeted to the general public is available at: <http://www.health.alberta.ca/health-info/influenza-evidence.html>

[Back to start of section](#)

Figure 6A: Laboratory confirmed respiratory virus cases, by virus type, by week, North Zone (2010-2011)



Sources: DIAL – Provincial Laboratory and the Outbreak Response Toolkit (includes cases with positive respiratory specimens received on or before June 4, 2011). For more information on data definitions and sources see [Annex: Data Notes section at the end of this report](#)

SURVEILLANCE AND HEALTH STATUS ASSESSMENT

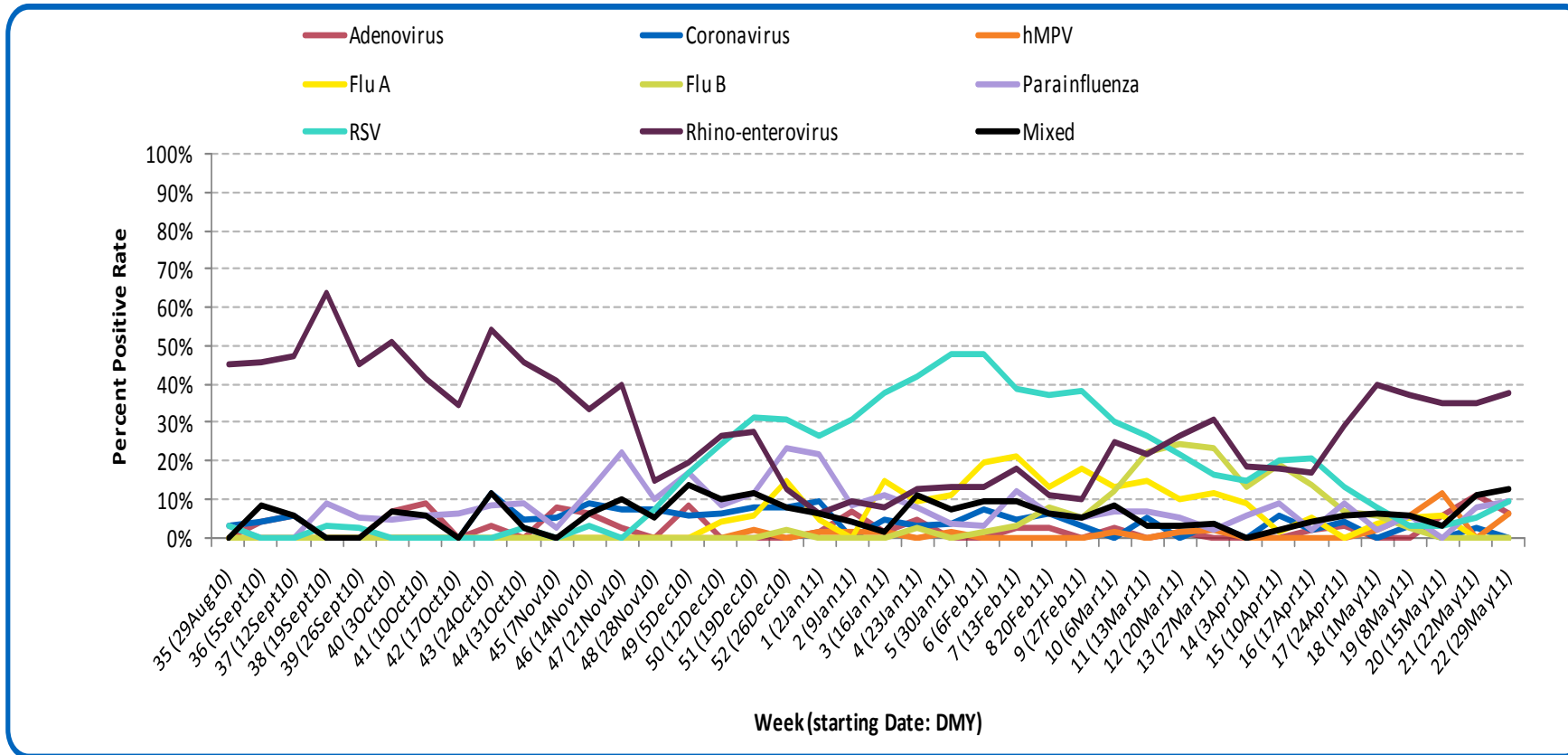
Public Health Surveillance

Report Date: June 7, 2011

An influenza report targeted to the general public is available at: <http://www.health.alberta.ca/health-info/influenza-evidence.html>

[Back to start of section](#)

Figure 6B: Respiratory specimen percent positive rates, by virus type, by week, North Zone (2010-2011)



Source: DIAL – Provincial Laboratory (includes cases with positive respiratory specimens received on or before June 4, 2011)
For more information on data definitions and sources see [Annex: Data Notes section at the end of this report](#)

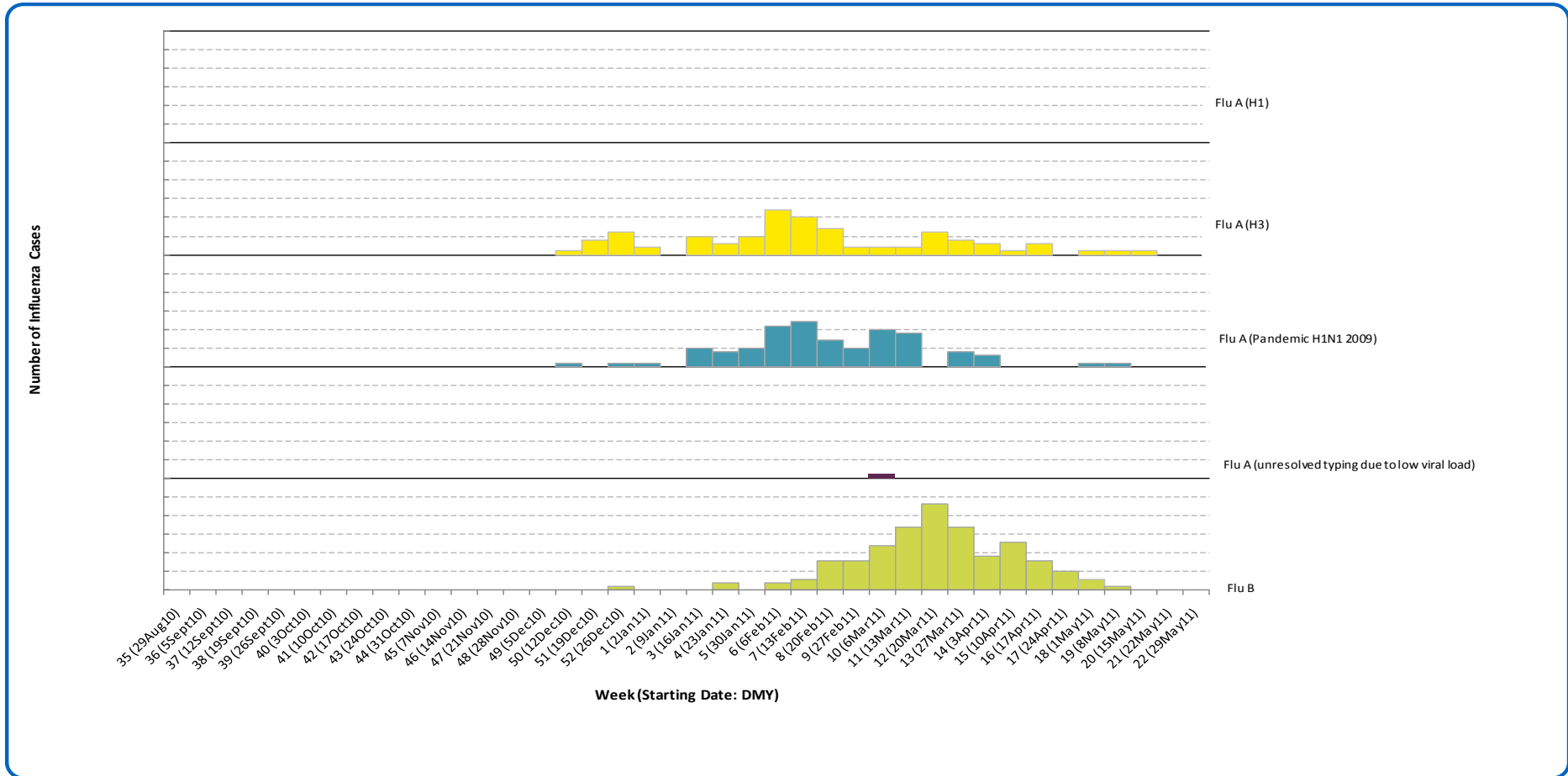
SURVEILLANCE AND HEALTH STATUS ASSESSMENT

Public Health Surveillance
Report Date: June 7, 2011

An influenza report targeted to the general public is available at: <http://www.health.alberta.ca/health-info/influenza-evidence.html>

[Back to start of section](#)

Figure 6C: Laboratory confirmed influenza cases, by subtype, by week specimen received, North Zone (2010-2011)



*Note: Eight specimens were positive for influenza A and one or more other virus type(s).

Source: Outbreak Response Toolkit (includes cases with positive respiratory specimens received on or before June 4, 2011). For more information on data definitions and sources see [Annex: Data Notes section at the end of this report](#)

SURVEILLANCE AND HEALTH STATUS ASSESSMENT

Public Health Surveillance

Report Date: June 7, 2011

An influenza report targeted to the general public is available at: <http://www.health.alberta.ca/health-info/influenza-evidence.html>

Table 6A: Cumulative influenza cases (and age specific rates), by subtype, by age group, North Zone (Aug 29, 2010 - June 4, 2011)

	Flu A (Seasonal-H1)		Flu A (Seasonal-H3)		Flu A (Pandemic H1N1 2009)		Flu A (unresolved typing due to low viral load)		Flu B		Total	
	#	Rate (per 10,000)	#	Rate (per 10,000)	#	Rate (per 10,000)	#	Rate (per 10,000)	#	Rate (per 10,000)	#	Rate (per 10,000)
0 to <2 years	0	0.0	16	11.2	18	12.6	1	0.7	26	18.2	61	42.8
2 to <5 years	0	0.0	10	4.9	4	2.0	0	0.0	23	11.3	37	18.2
5 to <9 years	0	0.0	11	4.5	5	2.1	0	0.0	13	5.3	29	11.9
9 to <18 years	0	0.0	9	1.6	11	2.0	0	0.0	18	3.2	38	6.8
18 to <65 years	0	0.0	27	1.0	42	1.5	0	0.0	46	1.6	115	4.1
65 to <75 years	0	0.0	2	0.9	0	0.0	0	0.0	6	2.7	8	3.6
75+ years	0	0.0	6	3.8	0	0.0	0	0.0	0	0.0	6	3.8
Total	0	0.0	81	1.9	80	1.8	1	<0.1	132	3.0	294	6.8

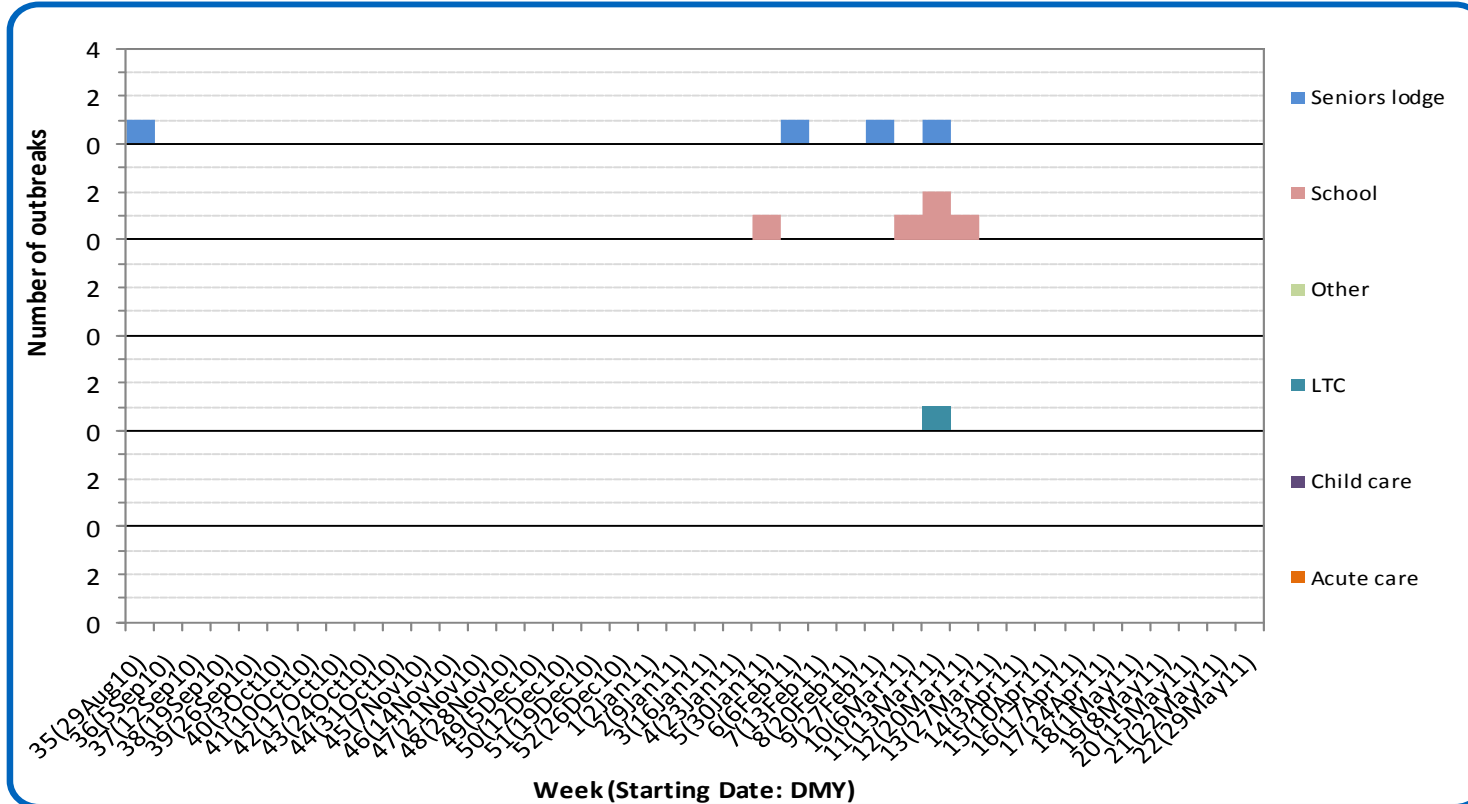
Source for Tables 6A & 6B: Outbreak Response Toolkit (includes cases with positive respiratory specimens received on or before June 4, 2011).

Population data values used to calculate rates are for June 30, 2009 and are estimated using actual population values from the Alberta Health Care Insurance Plan (AHCIP) Registration File as of March 31, 2009.

For more information on data definitions and sources see [Annex: Data Notes section at the end of this report](#)

[Back to start of section](#)

Figure 6D: Respiratory outbreaks, by facility type, by onset week, North Zone (2010-2011; school outbreaks may not have a laboratory confirmation)



Source: Alberta Outbreak Reporting Form as of 23:59 on June 4, 2011. LTC stands for long term care facility. For more information on data definitions and sources see [Annex: Data Notes section at the end of this report](#)

SURVEILLANCE AND HEALTH STATUS ASSESSMENT

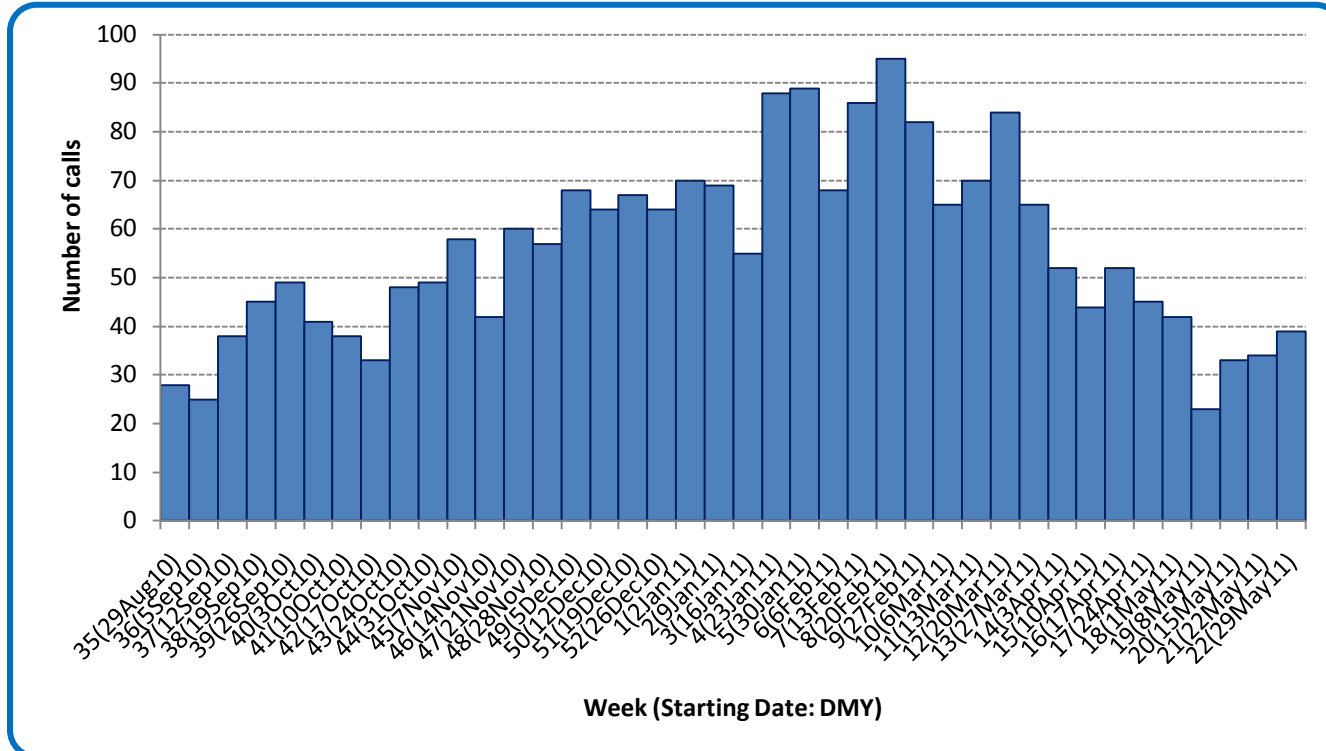
Public Health Surveillance

Report Date: June 7, 2011

An influenza report targeted to the general public is available at: <http://www.health.alberta.ca/health-info/influenza-evidence.html>

[Back to start of section](#)

Figure 6E: Number of calls to Health Link Alberta for cough or breathing difficulties, by week, North Zone (2010-11)



Source: Sharp Focus - Health Link Alberta - via Alberta Real Time Syndromic Surveillance Net (ARTSSN) as of 23:59 on June 4, 2011. For more information on data definitions and sources see [Annex: Data Notes](#) section at the end of this report.ccc

ANNEX: DATA NOTES

[Back to first page](#)

LABORATORY

Information on laboratory confirmed respiratory virus activity in Alberta is based on data from 2 sources:

- 1) Non-influenza viruses: The Alberta Provincial Public Health Laboratory DIAL system (Data Integration for Alberta Laboratories) – a specimen based system. Cases are determined by rationalizing samples from the same patient with the same virus identified within a 30-day period. The information (i.e. received date) from the first sample identifying the identical virus is used in this report.
- 2) Influenza viruses: The Alberta influenza Case Management System – an influenza case based system.

Both data sources are web-based applications supported by the Canadian Network for Public Health Intelligence.

The data in this report are based on specimens obtained from residents of Alberta; according to the date the specimen was received by the laboratory.

Definition for “mixed” – a single sample where multiple viral organisms were isolated.

INFLUENZA-LIKE ILLNESS

Four data sources are used to provide information on utilization of primary and acute care services by people with Influenza-Like Illness (ILI). *Caution: Each source uses potentially different definitions of ILI.*

1. Primary care summaries are obtained from the TARRANT system. Patients seen by TARRANT physicians may not be representative of the general population. Reported ILI cases represent people seen by TARRANT physicians, according to the date seen by the physician. The percentage of ILI represents the proportion of patients with ILI of all patients seen by the physician.
2. In addition to reporting visits of patients with ILI, TARRANT physicians also report visits with lower respiratory tract infections (LRTI). Each visit is recorded only once, even if a patient has symptoms consistent with ILI and LRTI. The combined ILI- and LRTI-related visits are therefore suggestive of overall respiratory infections in the patient population.
3. Information on visits for ILI in Emergency Departments (ED) and urgent care centers are provided by the Alberta Real Time Syndromic Surveillance Net (ARTSSN) data repository. ILI designation is based on patients being screened in emergency departments with an ILI screening tool. The primary purpose of the ILI screening tool is to implement appropriate infection control measures. The original data sources fed to the ARTSSN data repository are EDIS (Emergency Department Information System) for the Edmonton Zone and REDIS for the Calgary Zone.
4. Health Link Alberta is a 24 hour a day, 7 day a week nurse telephone advice and health information service that provides the public with advice and information about health symptoms and concerns. The original data source for the daily calls to Health Link Alberta for cough and breathing difficulties is the Health Link database called Sharp Focus.

SURVEILLANCE AND HEALTH STATUS ASSESSMENT

Public Health Surveillance

Report Date: June 7, 2011

An influenza report targeted to the general public is available at: <http://www.health.alberta.ca/health-info/influenza-evidence.html>

OUTBREAKS

[Back to first page](#)

Upon notification of an outbreak, the *Alberta Health & Wellness/Alberta Health Services* Outbreak Reporting Form (Fillable PDF) is completed by Zone Public Health investigators and sent to *Alberta Health & Wellness and AHS Public Health Surveillance*. The form includes information about the type and location of the outbreak, type of facility, and the causative organism (confirmed or suspected). There may be a delay between the reporting of an outbreak and the identification of the organism. This report includes only those outbreaks that are laboratory confirmed and caused by influenza-like illness viruses; outbreaks that are caused by bacteria (i.e. pertussis, invasive pneumococcal disease) and other types of viruses (i.e. measles, rubella (German measles), chickenpox) are excluded. Also excluded are those outbreaks that have no causative agent identified by the Provincial Laboratory for Public Health or where specimens are not tested or an outbreak with only one infected (confirmed or probable) case during a 7 day period. This follows the same approach of PHAC FluWatch for defining ILI/influenza outbreak. The naming convention of outbreak facilities by FluWatch - "Hospital and residential institutions" - is also adopted. Outbreaks in schools are officially counted in tables or graphs whether there is or not a laboratory confirmation; outbreaks in hospital and residential institutions that are pending for laboratory confirmation are described for information only but not officially presented in graphs or tables in this report.

INFLUENZA IMMUNIZATIONS

Influenza immunization data are reported by AHS zones. Numbers are available to the Public Health Surveillance team at the beginning of the week for the doses administered the previous week (Sunday to Saturday). It includes those doses administered by AHS (Public Health) only. Clients can only exist in one priority group. Immunization coverage rates will be reported at the end of March, 2011.

POPULATION NUMBERS

Population data values used to calculate rates are for June 30, 2009 and are estimated using actual population values from the Alberta Health Care Insurance Plan (AHCIP) Registration File as of March 31, 2009. The following registrants are included: residents of Alberta; 'residents' of Alberta temporarily living elsewhere, such as extended visits or vacations or students attending an educational institute outside of Alberta, or Albertans temporarily (up to four years) working outside Alberta; persons during the first three months after they move from Alberta to another Canadian province; dependants of members of the RCMP and Armed Forces; persons from another country who are working or studying in Alberta on valid visas; and Natives/Aboriginals whose premiums are paid by Health Canada, First Nations and Inuit Health Branch. Not included are: members of the Armed Forces and RCMP; inmates at federal penitentiaries; persons from other provinces during their first three months in Alberta; and persons who have not registered for eligibility, or have opted out.

Slight differences between values provided at this level of aggregation and data provided at other levels of aggregation may occur because of round-off error. Population values are subject to change without notice when new source data is received.

SURVEILLANCE AND HEALTH STATUS ASSESSMENT

Public Health Surveillance

Report Date: June 7, 2011

An influenza report targeted to the general public is available at: <http://www.health.alberta.ca/health-info/influenza-evidence.html>