

# Bridgeland Riverside Continuing Care Centre Public Info Session

[ahs.ca/bridgelandproject](https://ahs.ca/bridgelandproject)  
[community.engagement@ahs.ca](mailto:community.engagement@ahs.ca)



# Project Highlights

- + Joint project between Alberta Infrastructure (construction), Alberta Health Services (owner) and Carewest (service provider)
- + \$130.5-million budget
- + Approximately 200 private rooms for long-term care beds
- + The facility will also provide outpatient and day program services for seniors

# Why is the new facility needed?

- + Urgent need to increase access to residential continuing and complex care
- + Provide outpatient and day program services for seniors
- + Reduce the number of people waiting in hospital for a continuing care space and create more bed capacity in Calgary hospitals

# About the Services

## Services provided at the new care centre:

In addition to long-term care, the site will offer the following continuing care services:

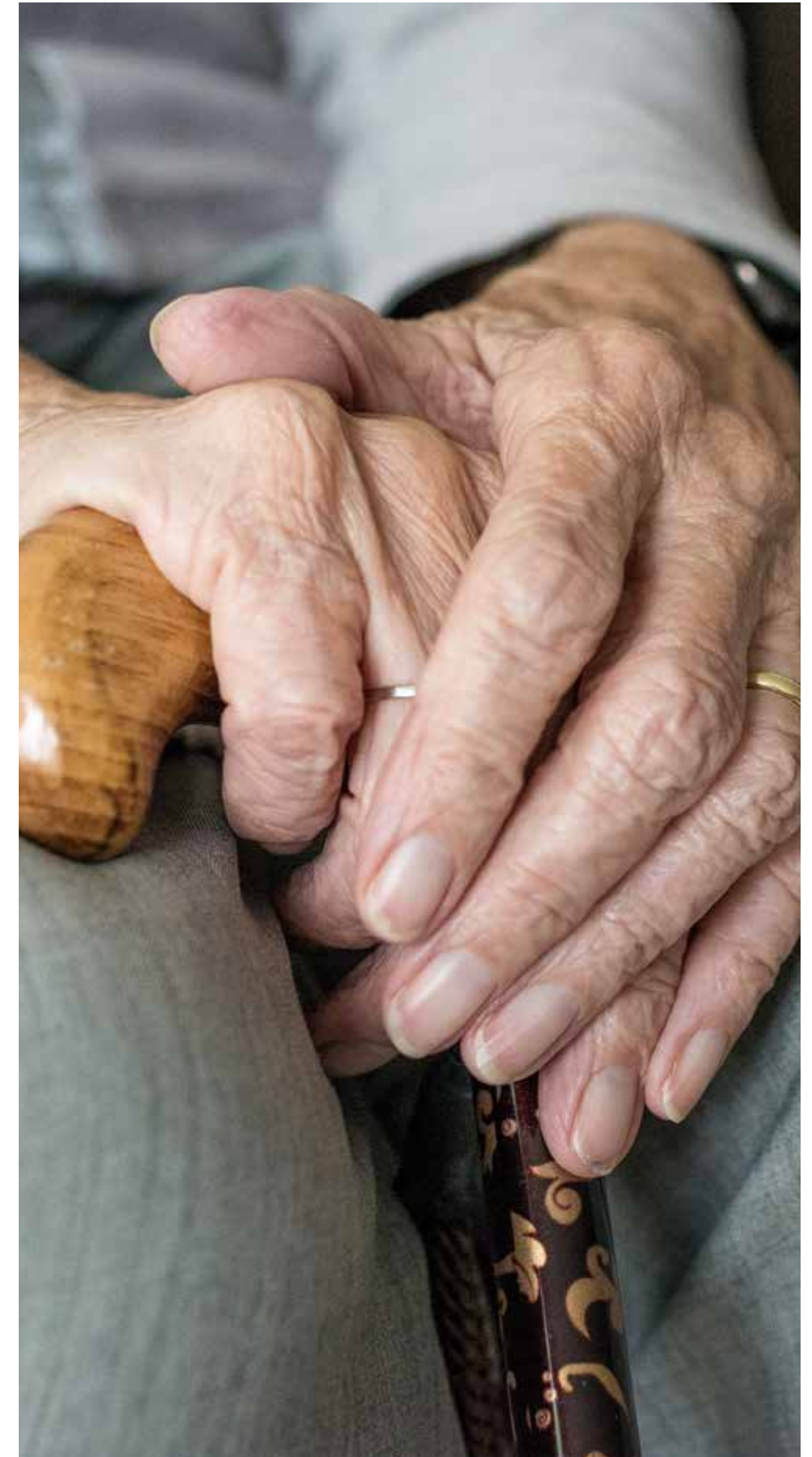
- + **AHS Seniors Health Centre:** Fall prevention clinic, geriatric mental health clinic, health clinics for seniors with medical, mobility and cognitive impairments.
- + **Carewest Seniors Day Programs:** Programs aimed at helping seniors remain independent and living at home. Includes Carewest C3 (Comprehensive Community Care) program which provides integrated care to seniors who need medical monitoring and support.

## Staff and parking:

- + Between 200-250 staff on-site during peak periods on weekdays
- + Staff include physicians, nurses, healthcare aides, social workers, recreational therapists and health support professions
- + On-site parking will be made available for staff, visitors and residents. As part of the project we will be doing traffic and parking studies.

# Who will live in the new facility?

- + There will be about 200 clients living in the care centre.
  - + Approximately half will be on secure floors, and half on unsecured
  - + There will be a mixture of adults and seniors with a wide range of care needs from simple to complex (which could include dementia, brain injury, mental illness, addiction issues and developmental disability)
  - + The most complex residents will reside within a secure unit and will not leave the facility without supervision
- + Not intended for persons currently in the justice system. Those individuals will continue to be cared for in a variety of other specialized facilities.



## Making it safe for residents and the community:

- + AHS and Carewest are committed to protecting the safety of neighbours, residents, visitors and our staff.
- + We have been providing complex care at other sites across Alberta for many years and have a very positive safety record with our neighbours and residents.
- + We will have on-site, well-trained AHS protective services available 24-7 to further ensure the safety of all.

# Making it safe for residents and the community:

- + We have well-established and proven practices and procedures in place to ensure everyone is safe. They include:
  - + A **secure unit** will be part of the centre, including secure outdoor access, where vulnerable patients have a safe environment that restricts their movement and interaction with the community.
  - + **Curfews and tracking measures** are in place for mobile residents that can safely interact with the community. Vulnerable patients can only leave the centre with a caregiver. We closely monitor when residents leave and return to the centre.

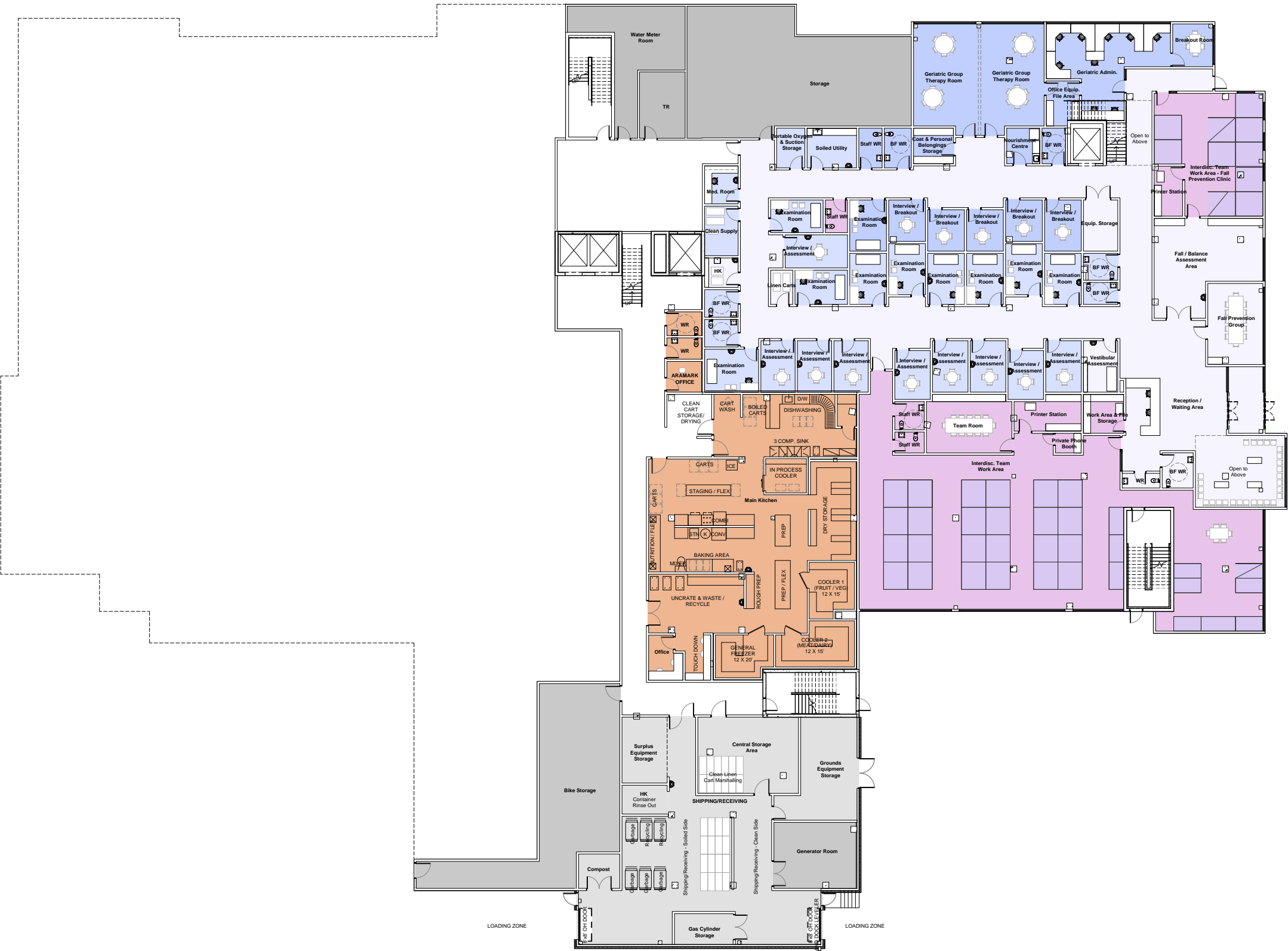
# About the Building



# Main Level



# Lower Levels



# Residential Floors

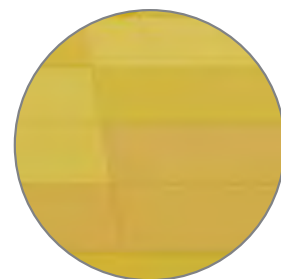




brick



wood look



coloured



screens



overhangs



balconies

└ cement board ┘







# About the Site



This architectural site plan illustrates the layout of the Bridgeland Riverside Continuing Care Centre. The central feature is a large, white, irregularly shaped building footprint. To the north of the building is Centre Ave, which includes a crosswalk and a small landscaped area with a blue pond and a wooden deck. To the south of the building are two garden areas: the West Garden on the left and the East Garden on the right. The West Garden features a wooden deck, a small pond, and a parking lot. The East Garden includes a larger pond, a wooden deck, and a parking lot. To the east of the building is a large parking lot and a Community Park Space, which contains a building, a green lawn, and a winding path. The entire site is bordered by a road on the north and south sides, with crosswalks at the intersections.

## Bridgeland Riverside Continuing Care Centre

Centre Ave

West  
Garden

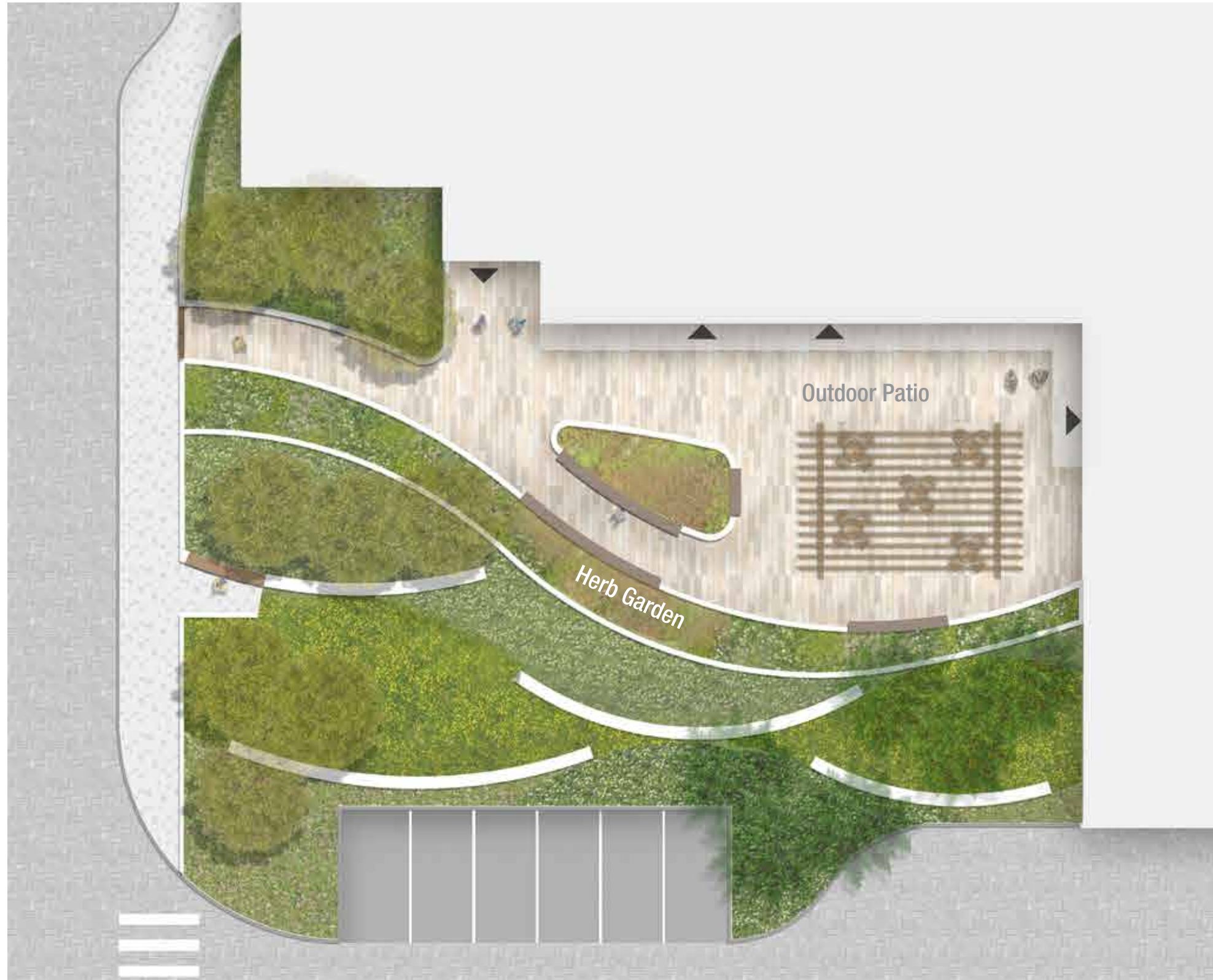
East  
Garden

Community  
Park Space

# Centre Avenue



# West Garden



# East Garden



# Community Park Space





# Next Steps

# Community Engagement

## So far we have:

- + Been working with members of the BRCA. Community input has helped inform decisions on design, layout, access points, pathways and ideas for outdoor areas.
  - + **March 2018:** Met with the community to introduce the project
  - + **November 2018:** Met with adjacent residents to discuss building program
- + Been meeting with the BRCA to help create a masterplan for the future development of the entire site.

## We are committed to:

- + Keeping the community and the BRCA informed of construction activities that impact the community (road closures, loud noises, increased traffic, parking studies, etc.)
- + Providing regular construction updates and open lines of communication for any community concerns
- + Including BRCA and community in discussions on the future planning for entire site

## Project Next Steps:

- + Fall/Winter 2018/19**

Continued Community Engagement

- + Winter 2018/19**

Demo the Cross Bow Building

- + Winter 2018/19**

Development Permit to City of Calgary

## Future Planning:

- + 2019:** Zone Healthcare Planning Process

## Updates and Share Your Opinion

Visit the project website at  
[ahs.ca/bridgelandproject](https://ahs.ca/bridgelandproject)  
to stay informed or share your  
thoughts about the project.

# Thank you!

Please visit the information stations  
around the room