



Southeast corner – concrete pour and structure steel installation completed



East wall glazing frame install underway

Community Update:

Calgary Centre for Child and Adolescent Mental Health



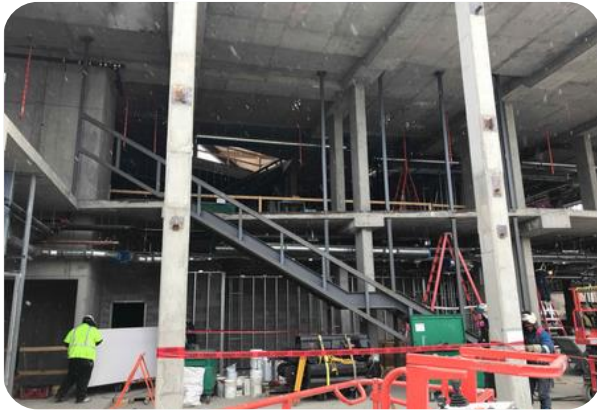
Overview

- The \$39 million Calgary Centre for Child and Adolescent Mental Health (CCAMH) project is being built in partnership between Alberta Health Services (AHS) and the Alberta Children’s Hospital Foundation (ACHF).
- The ACHF has raised more than \$50 million to fund construction of the centre, along with program and research enhancements.
- Once built, the new facility will provide community-based mental health services to help ensure mentally healthy futures for children and adolescents in our community.
- The centre will provide young people with new and enhanced services, including a walk-in clinic with specialized triage and the opportunity for immediate referrals to onsite programs. These community-based services will provide youth and their families with care designed to stabilize and manage escalating illness and, ideally, prevent hospitalization.
- In addition to the walk-in clinic, the three-storey, 3300sq.-m facility will also offer an intensive treatment program and a day hospital. The facility’s services will augment and integrate with existing services provided by AHS and community-based agencies.



Construction update

- All the concrete has been poured.
- Structural steel, metal deck (roof structure) and south side canopy steel have been installed.
- Roofing for gym, mechanical penthouse and elevator shaft complete.
- Interior mechanical and electrical rough-in on main and second floors are 85% complete.



Feature stair from level 1 to 2



What's to come

- Elevator is scheduled to arrive in mid-May and will take six weeks to install.
- Window frame installation on east face, main and second floor is expected to be completed shortly.
- Furniture, equipment and IT procurement are well underway.
- Construction is expected to be complete in late summer 2022, with doors opening several months later.



Gym block wall



Level 3 in slab heating lines in place



Ramp walls with east elevation

Spring 2022



<https://www.ahs.ca/about/capitalprojects.aspx>