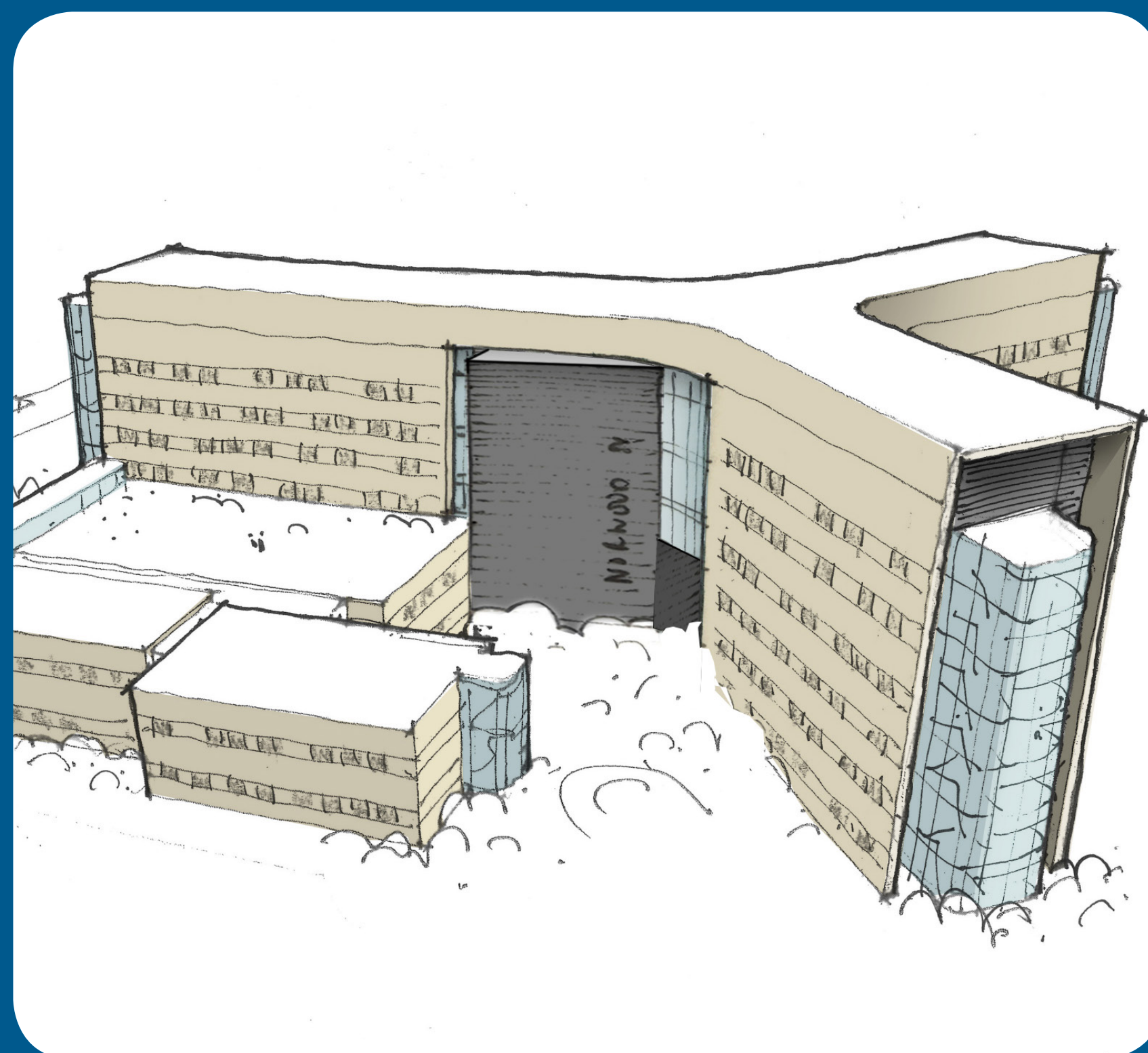


# CapitalCare Norwood Re-Development Project

Open House June 12, 2018





# Project highlights:

- Joint project with Alberta Infrastructure, Alberta Health, Alberta Health Services and CapitalCare;
- \$364 million expansion approved in 2017;
- Will increase capacity to 350 beds from 205;
- Expansion involves:
  - A new building;
  - Renovation of the existing Angus McGugan Pavilion (AMP);
  - Acquisition of land south of 112 Avenue and west of 105 Street;
  - Partial closure of 105 Street.



## CapitalCare Norwood Re-Development Project

.....



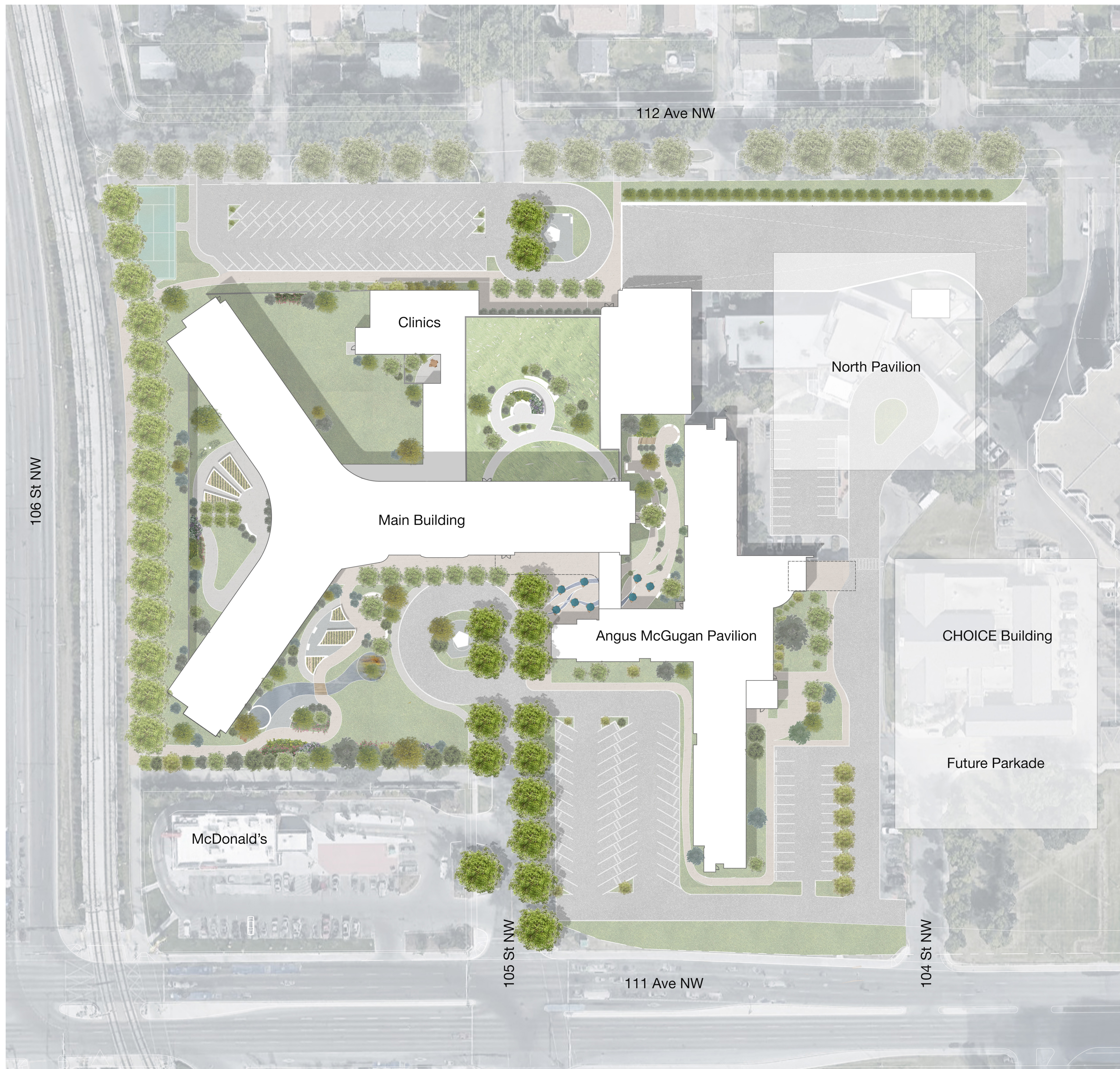
# Project benefits:

- Increases continuing care capacity;
- Relieves pressure on acute and continuing care systems in Edmonton;
- Consolidates a broad range of programs near Glenrose Rehabilitation Hospital and Royal Alexandra Hospital, which are connected to CapitalCare Norwood by underground tunnel.

Community services that could be provided in the new expansion:

- Specialty dental clinic;
- Community paramedic program;
- CHOICE – day program to keep seniors healthy and at home;
- Hemodialysis;
- Pulmonary rehabilitation;
- Respiratory outreach and respiratory benefits program;
- Facilities to support continuing care education and research.





## Site layout:

- Access to Main Building and Angus McGugan Pavilion from 111 Avenue;
- Access to Clinics from 112 Avenue;
- 105 Street closed north of McDonald's;
- Row of trees along 105 Street remains;
- Existing shared use pathway at 106 Street remains;
- North Pavilion will be demolished;
- CHOICE building will be demolished (Site of future parkade).



# Main building:

- Mainly residential; private rooms; 7 storeys;
- Care units include:
  - Brain injury unit;
  - Complex continuing care including hemodialysis & dementia;
  - Chronic ventilation & respiratory;
  - Post-acute care;
- Connects to AMP and clinics;
- “Hub” of each floor is the dining/activity area with expanses of glass;
- Main entry from 111 Avenue at 105 Street.



## CapitalCare Norwood Re-Development Project



# Clinics:

- Two-levels;
- Level 1: New location for CHOICE day program;
- Level 2: New location for Centre for Lung Health and hemodialysis unit;
- Direct access from 112 Avenue for CHOICE and Centre for Lung Health;
- Direct access from 111 Avenue for hemodialysis unit.

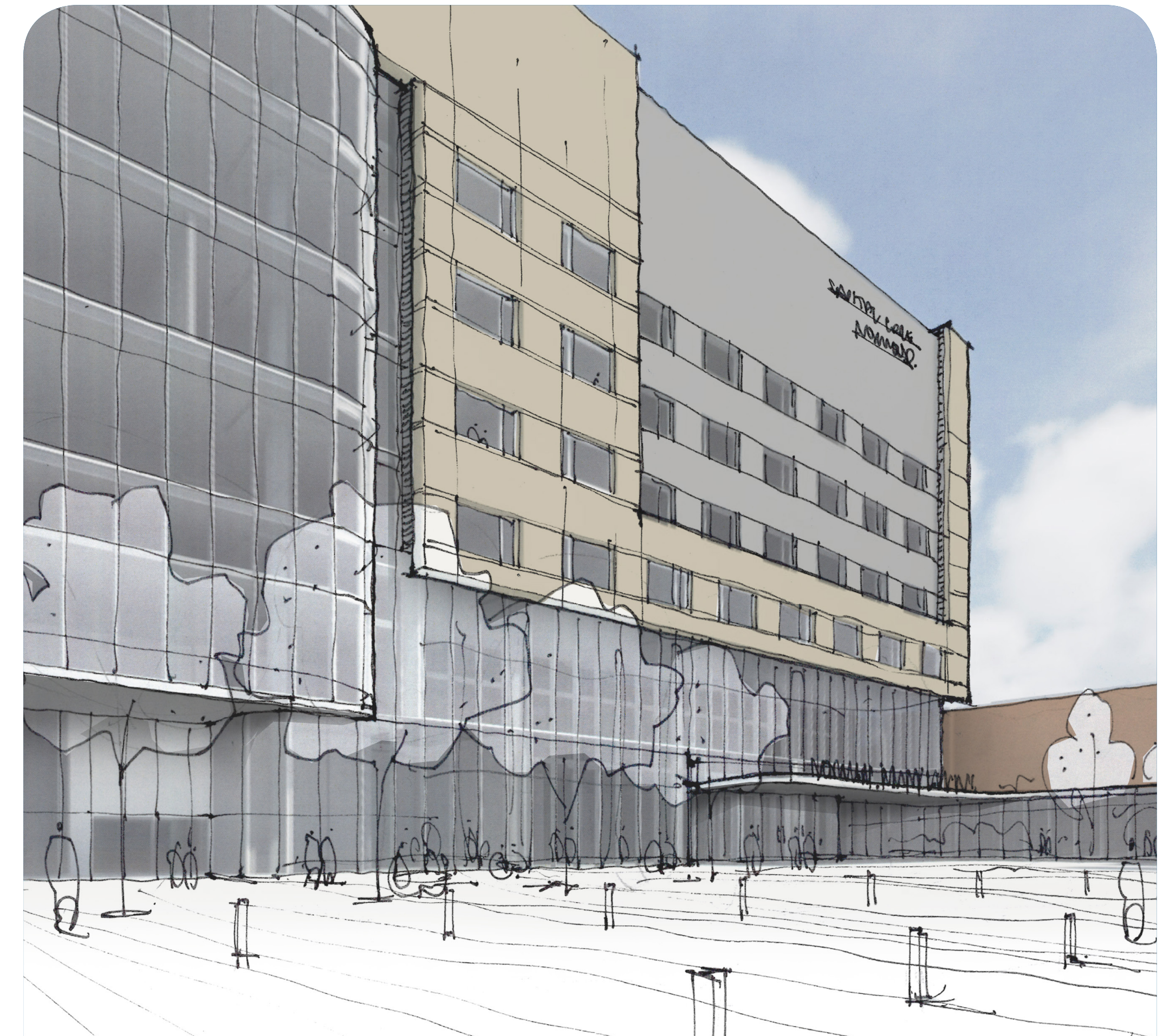


## CapitalCare Norwood Re-Development Project



# Angus McGugan Pavilion:

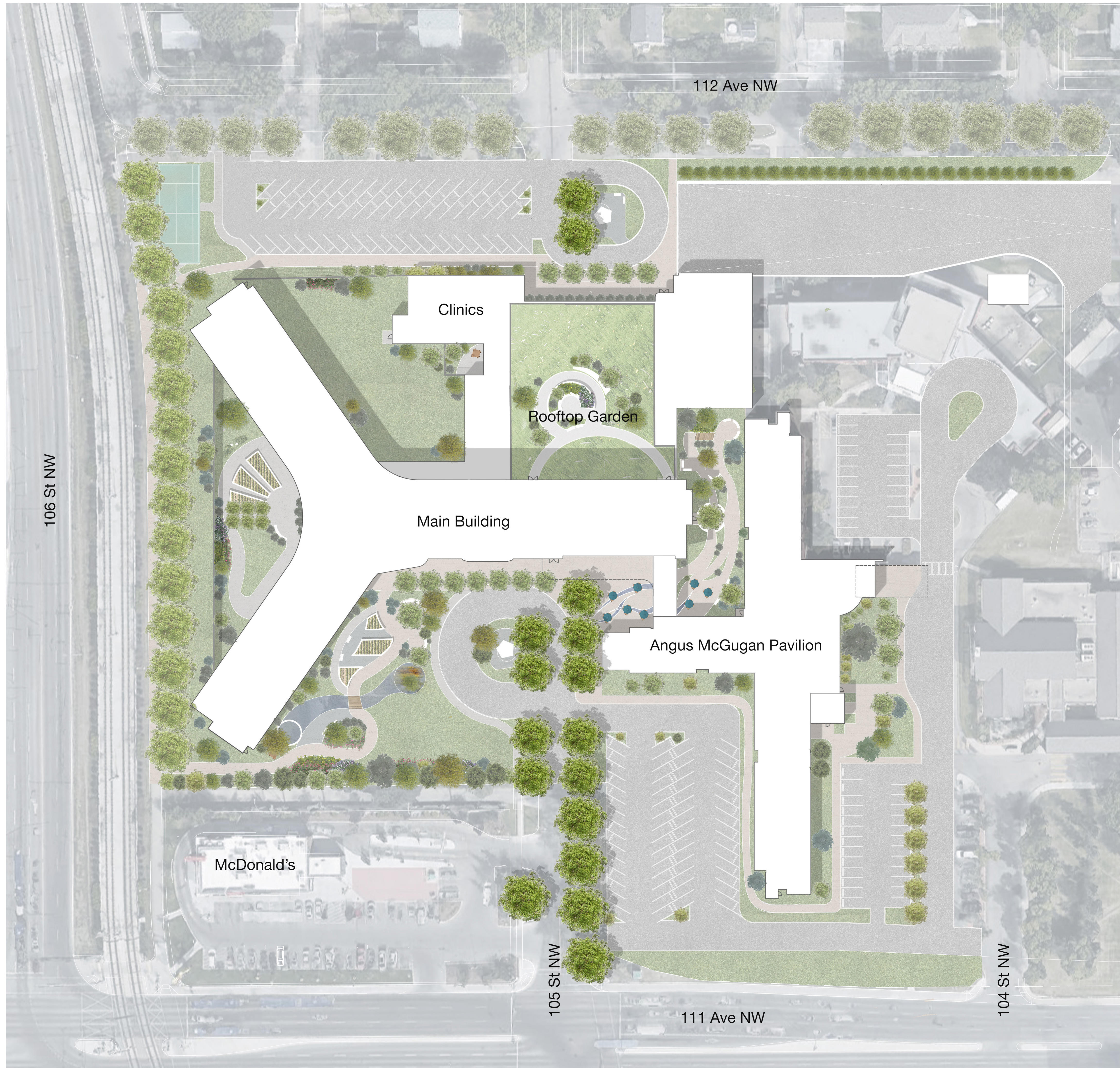
- Existing entry to building and access from 111 Avenue maintained;
- Level 1: Will be redesigned to accommodate administrative services, community EMS, staff areas, and amenities such as a hair salon and lobby space;
- Level 2: Palliative/hospice care;
- Levels 3 & 4: Complex continuing care.



CapitalCare Norwood  
Re-Development Project

.....



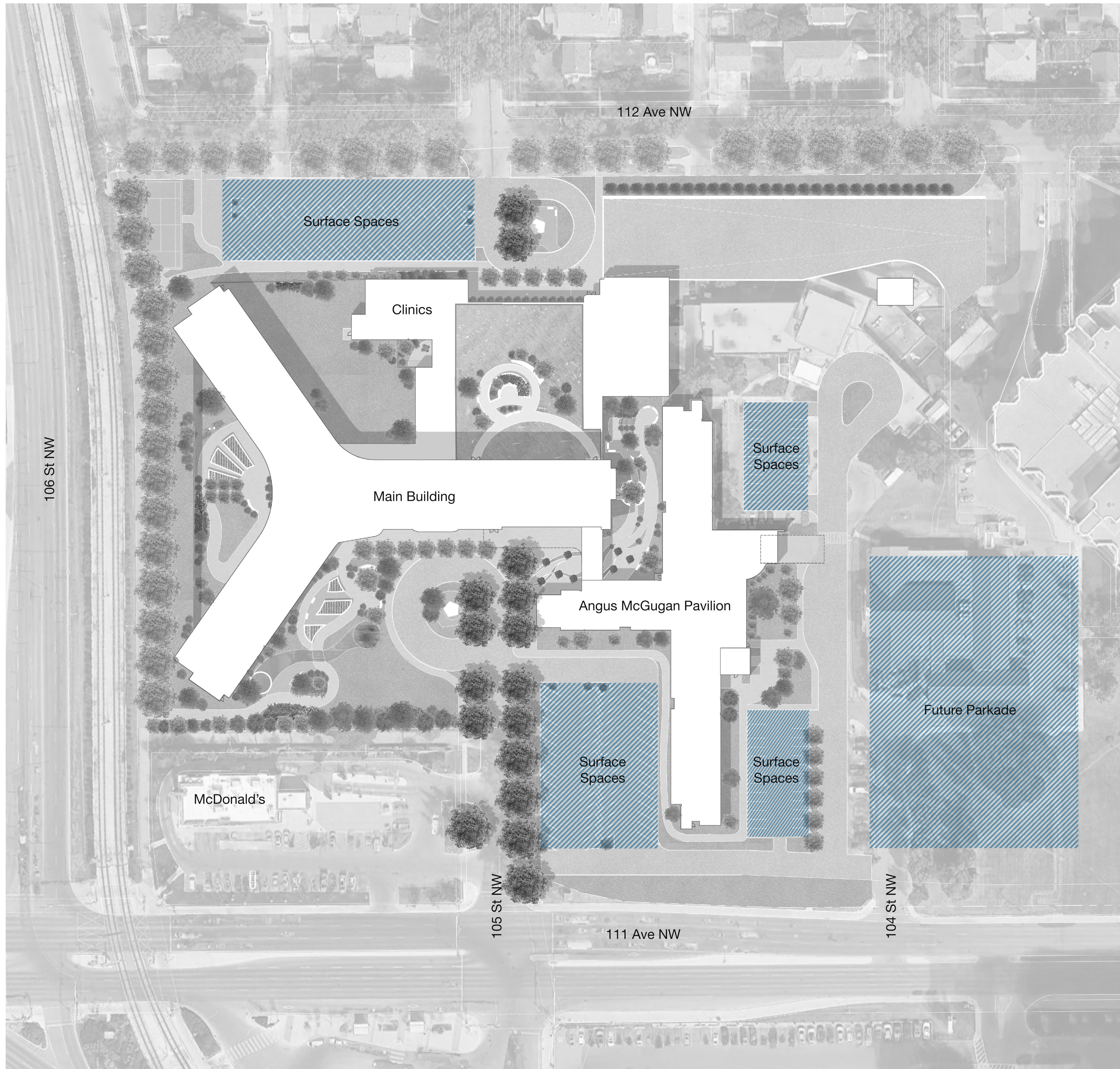


## Proposed landscape design:

The landscape design seeks to bring the city to the residents with the following design principles:

- Contribute to a livable and walkable community;
- Sustainable and innovative;
- Age-friendly, that encourages movement and exercise;
- Integrated part of the community;
- Design reflects nearby residential character.





## Parking and transportation:

- Increased onsite parking for visitors and staff;
- Majority of visitor and all staff parking will access site from 111 Avenue;
- Main traffic accessing site from 112 Avenue will be for some of the clinics' programs and loading dock;
- New and existing pathways connect pedestrians and bicycles to 111 Avenue and LRT.







# Working with the community

## What we've heard:

- **Parking:** Future parkade and increased surface parking will help to alleviate parking congestion in neighbourhood.
- **Traffic:** Working with City of Edmonton to improve traffic flow.
- **Construction:** Mitigate noise and dust, safety fencing will be set up around site.

## Who we've met:

- Met one-to-one with homeowners whose homes need to be purchased as well those who might be impacted by height of building.
- Met with Spruce Avenue Community League and Kingsway District Association.
- Held first public open house September 2017.



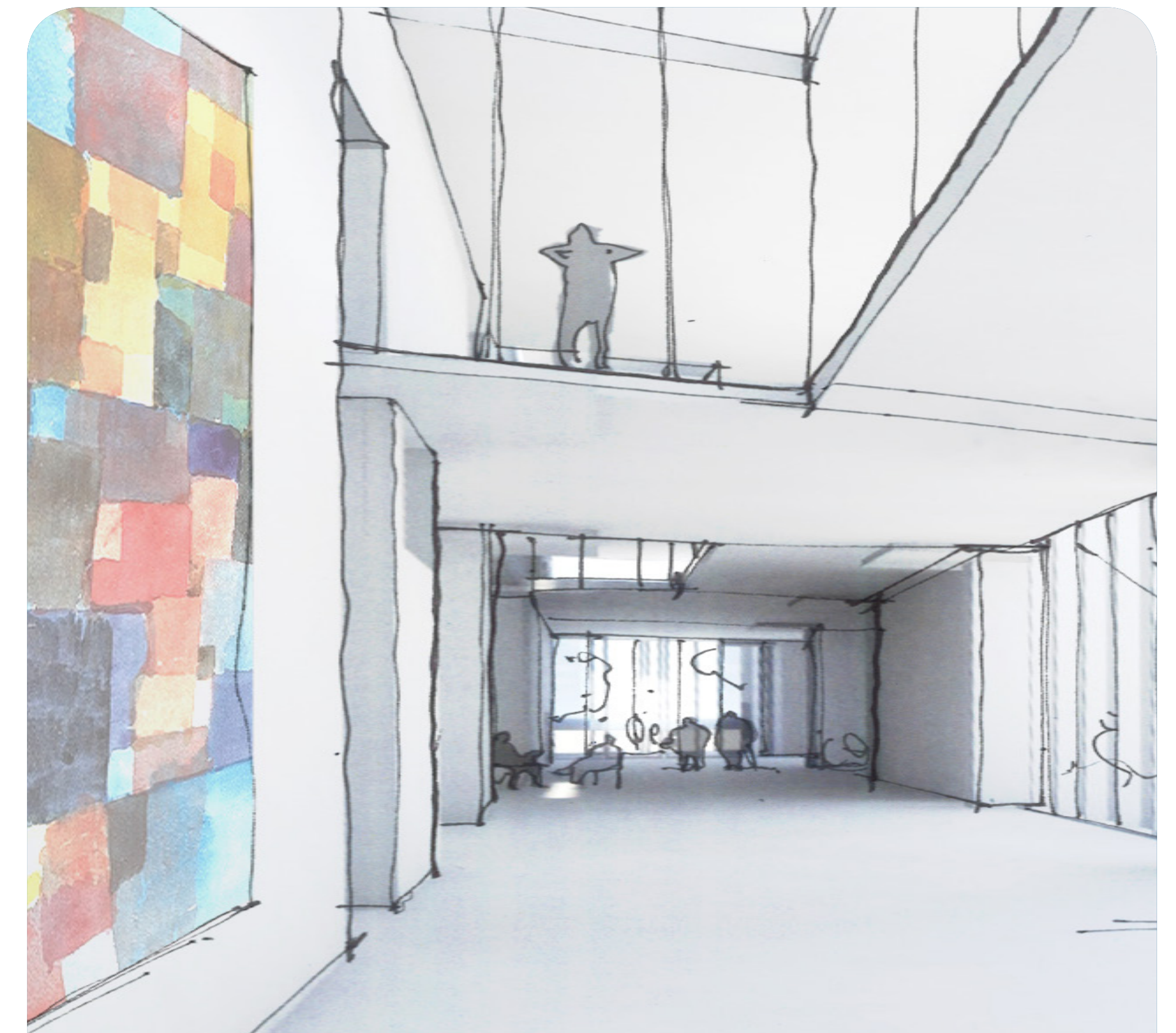
CapitalCare Norwood  
Re-Development Project

.....



# Next steps:

- Spring 2018 – Share design and plans with community in meetings and second public open house.
- Summer 2018 – Apply for development and re-zoning permits.
- Late 2018 - Start construction.
- Late 2021 – Renovate Angus McGugan Pavilion (AMP).



## CapitalCare Norwood Re-Development Project

.....



# CapitalCare Norwood Re-Development Project

---

We are listening.

Please provide any comments or feedback  
you may have on the CapitalCare Norwood  
Re-Development Project.

E-mail: [CapitalCareNorwoodProject@ahs.ca](mailto:CapitalCareNorwoodProject@ahs.ca)

Project website: [www.ahs.ca/norwoodproject](http://www.ahs.ca/norwoodproject)

