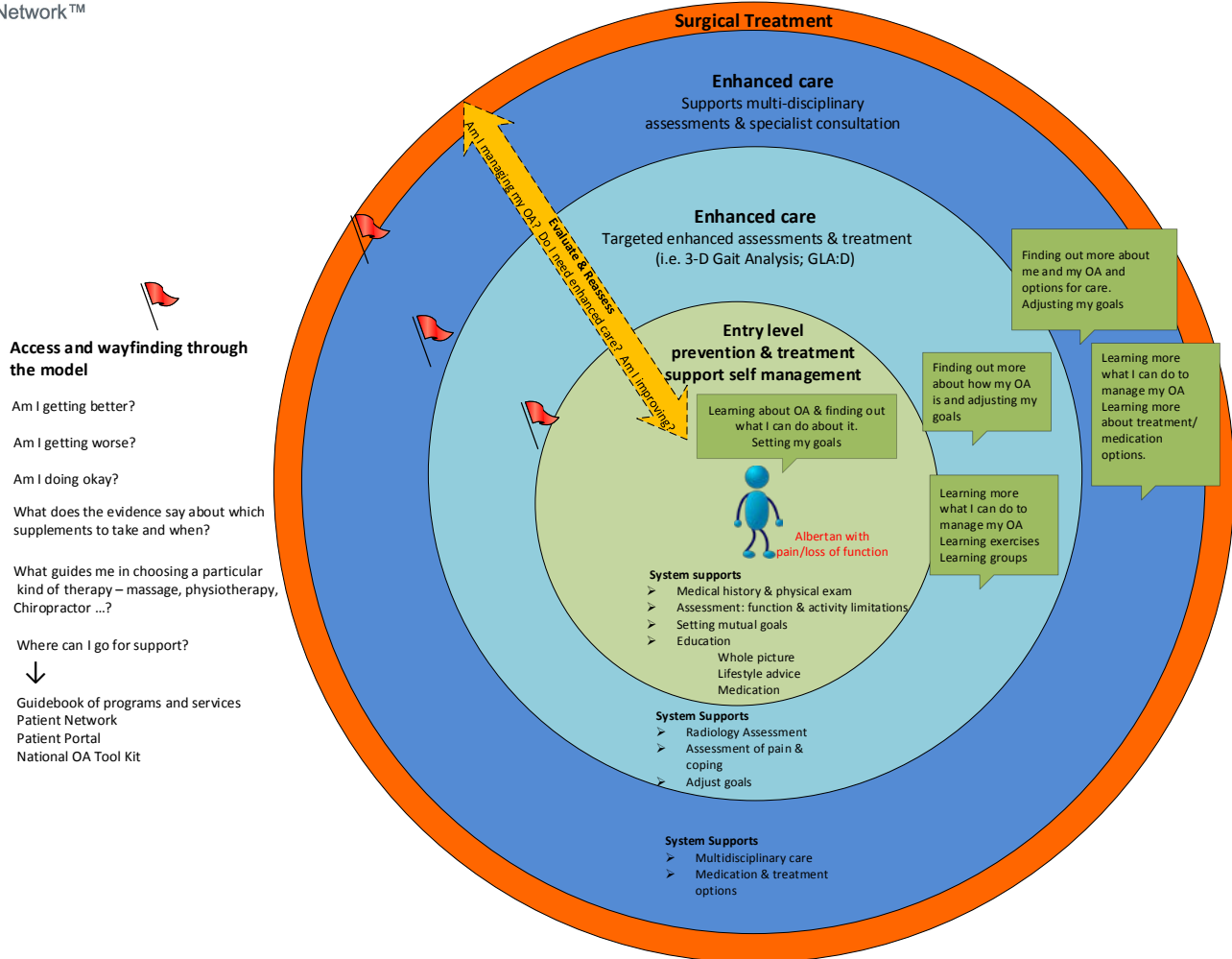


# Model of Care for Osteoarthritis Management



## Guiding Principles for review of the model

- Albertan with pain/loss of function is informed and is an active participant in their care planning and treatment options.
- A person can enter at any point and move either to requiring 'more support' or less support/maintenance/function.
- The model is evidenced-informed.
- It is dynamic and will grow and develop as new models of care and approaches/research are evaluated and incorporated.
- Multiple providers are involved in the programs and services available.