

Alberta Cancer Diagnosis

September 2022

A new program designed by Albertans, Primary Care, and the Cancer Strategic Clinical Network

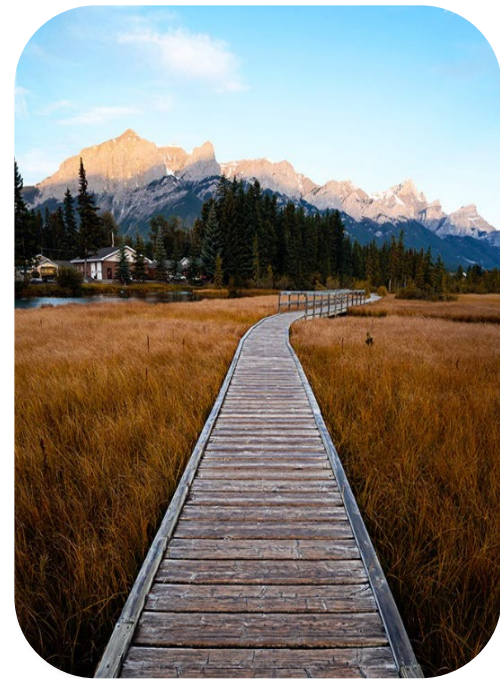
The Alberta Cancer Diagnosis (ACD) initiative is designing a better cancer diagnosis experience for the people living in Alberta. It aims to streamline cancer diagnosis, improve continuity between primary/specialist-care, and optimize support for people potentially facing a cancer diagnosis.

Meaningful and diverse engagement is a cornerstone of the ACD initiative. In 2022, the CSCN partnered with Alberta J5 Design to undertake broad engagement with stakeholders and diverse groups in Alberta to understand their unique needs when facing a cancer diagnosis (e.g., newcomers, people living in rural areas, Indigenous perspectives, younger and older adults, people who identify as LGBTQ2S+, people with disabilities, and people experiencing homelessness or precarious housing situations).

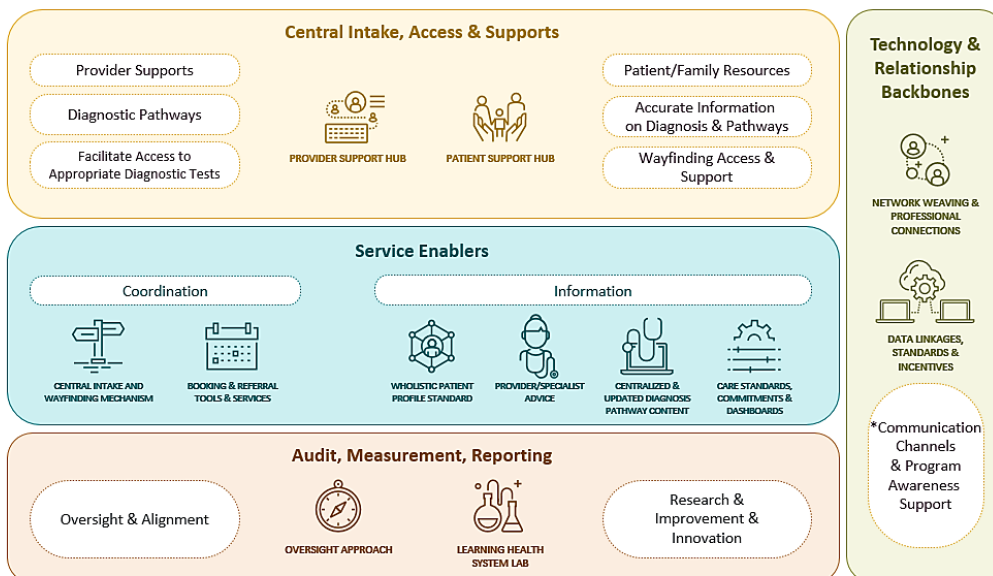
What we heard has given us a rich body of information to inform the design of the ACD blueprint- a first step towards designing the program.

A blueprint is a way to organize the ACD Program's services and understand the underlying resources and processes needed to reflect the insights obtained through stakeholder engagement.

A blueprint can communicate the vision and strategy for complex service changes like the ACD Program.



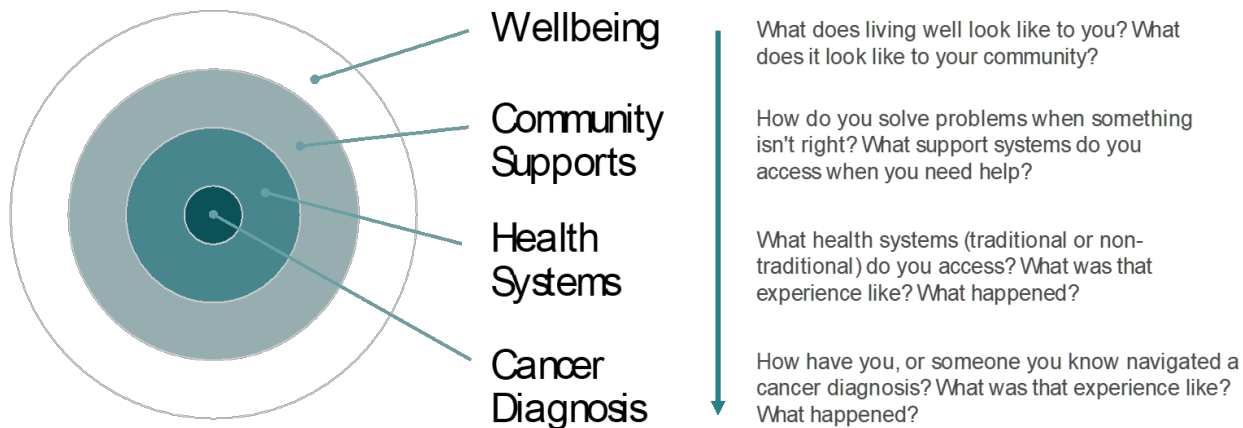
Alberta Cancer Diagnosis Program Draft Blueprint



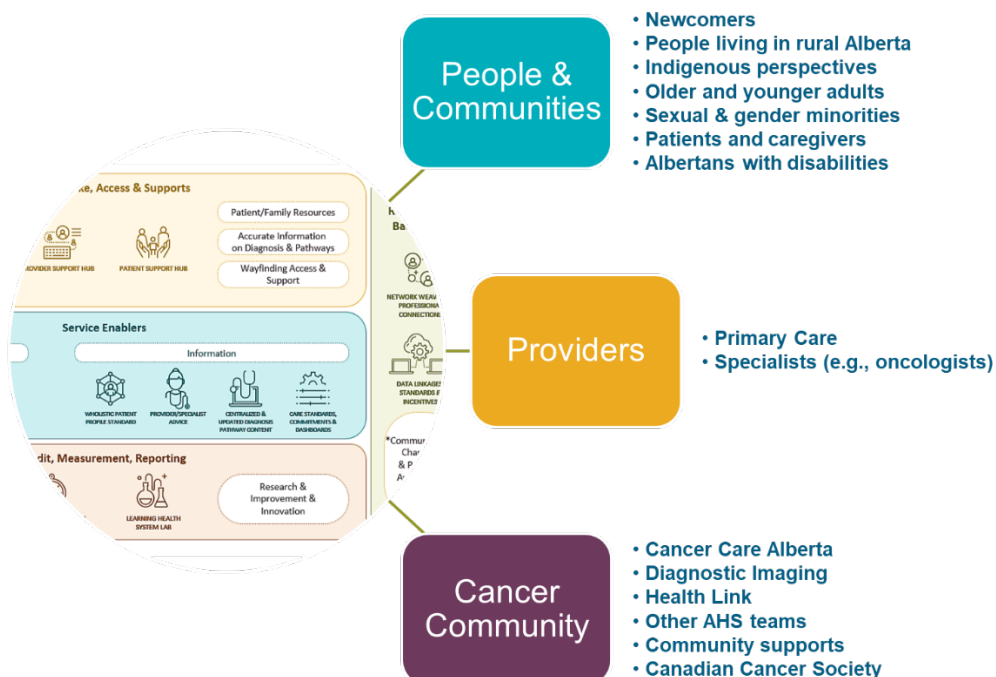
“Many relationships exist in the cancer diagnosis space and must be understood to inform design.”

Where did we start?

We cannot use a “one size fit all” approach to design a cancer diagnosis program that responds effectively to the needs of all people living in Alberta. The existence of diverse population groups in Alberta with unique concerns related to cancer diagnosis calls for purposeful inclusion in the design of healthcare initiatives. Recognizing the cultural, sexual identity, age-related, geographical, historical, personal, and system barriers that impact cancer diagnosis and care among different population groups in Alberta is key to designing an effective ACD Program.



Over 65 engagements across Alberta were conducted during the first half of 2022 through a collection of brokering conversations, interviews, observation site visits, focus groups, literature reviews, think tanks, and workshops. As a result of this a network of important relationships is evolving and growing to support the work.



What did we learn from engagement?

Seeing the Whole Person



Building Relationships



Enabling Choice & Access



Design Principles

A detailed set of desired experiences was captured during engagement, which informed the program's design principles.

Seeing the whole person: the acknowledgement and respectful consideration of the complexities of being human and responding to each individual through the provision of safe, trauma-informed, and identity-confirming care.

Building relationships: Connections between individuals and systems based on the establishment of clear communication, equal understanding, support and trust.

Enabling choice and access: Knowledge of existing services and the ability to use and consume them.

Podcasts

The team met with newcomers, people who are older and younger, people from rural and remote communities, people with Indigenous perspectives, people with disabilities, gender and sexual minorities. We asked them how they see the world, how they use the health system, what would better look like for them and their community, and what could we do to make cancer diagnosis easier. From all of these stories, insights were catalogued and were used to create design principles for the ACD Program.

[Click here to listen to Rural and Remote engagement podcast.](#)

[Click here to listen to Health Advisory Council engagement podcast.](#)

[Click here to listen to Inclusion engagement podcast.](#)

[Click here to listen to Young Adult engagement podcast.](#)

For more detail about the engagement process and an overview of the design principles, you can listen to Dr. Fay Strohsehn's presentation here: *Alberta Cancer Diagnosis Initiative - Engagement Methods & Design Principles* here https://youtu.be/mcMoeaUQR_U