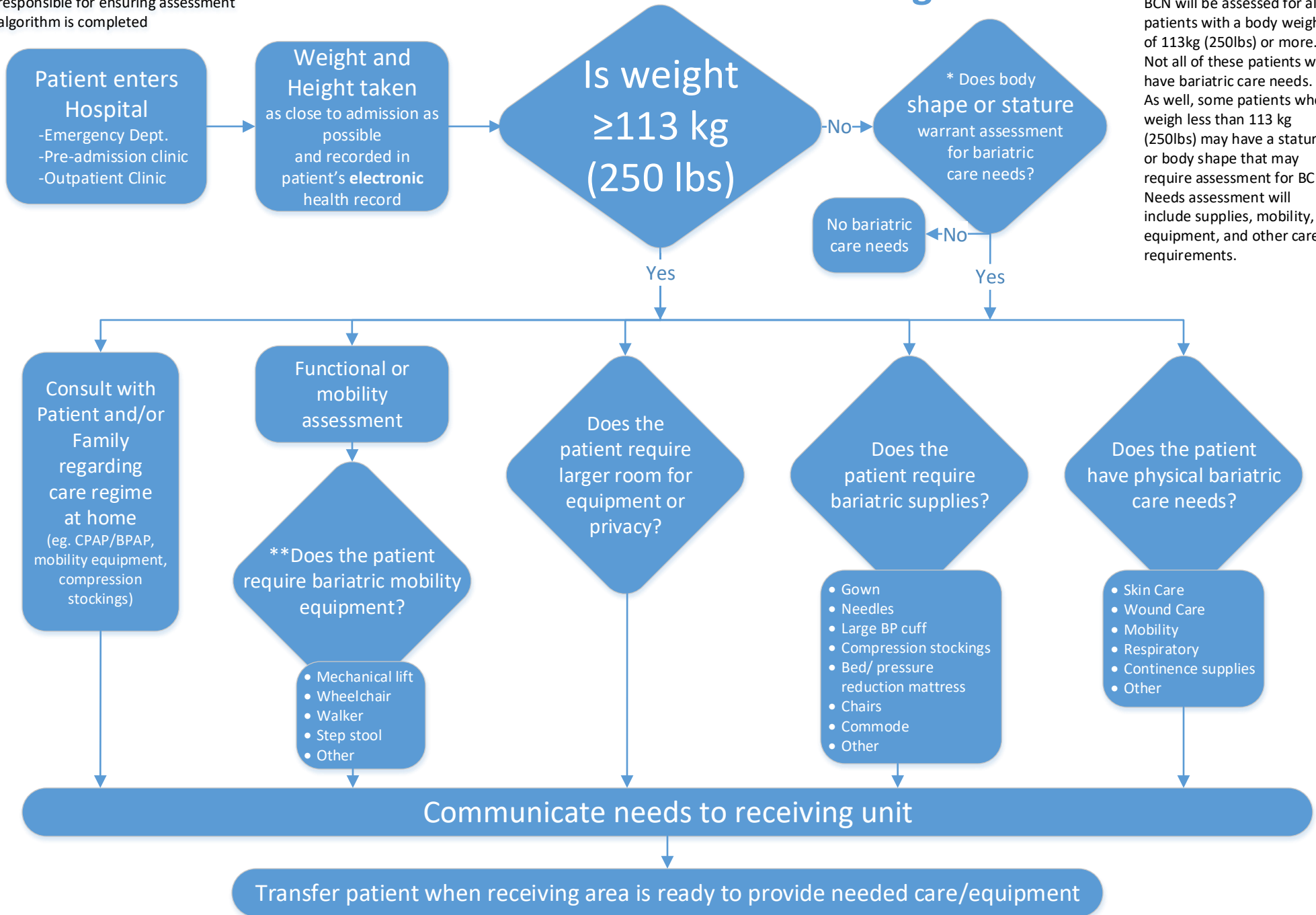


RN / LPN assigned to patient responsible for ensuring assessment algorithm is completed

# Bariatric Care Needs Assessment Algorithm

**Bariatric Care Needs (BCN)**  
 BCN will be assessed for all patients with a body weight of 113kg (250lbs) or more. Not all of these patients will have bariatric care needs. As well, some patients who weigh less than 113 kg (250lbs) may have a stature or body shape that may require assessment for BCN. Needs assessment will include supplies, mobility, equipment, and other care requirements.



\*Patient may have short or tall stature and/or have a body shape that requires mobility and equipment assessment

\*\*Equipment assessment may require referral to Occupational or Physical Therapy