

# Manager/Charge Nurse Quick Reference Guide

## Acute Care and Continuing Care

Central Zone Infection Prevention and Control (IPC)

The Infection Control department regular hours are Monday - Friday from 0800-1615 (excluding holidays). To reach your local Infection Control Professional (ICP) refer to the [Central Zone IPC Contact List](#) found on Insite.

If you require further information, please email [ipccenzonadmin@ahs.ca](mailto:ipccenzonadmin@ahs.ca) to have your request forwarded to the appropriate ICP. Note: this email is monitored twice daily.

### IPC after hours on-call

Infection Prevention and Control (IPC) has an after-hours on-call service for urgent issues. Note: **urgent issues are for concerns that need immediate consultation with an ICP**. Central Zone IPC on-call can be contacted after regular business hours and on weekends/holidays through:

**RAAPID North 1-800-282-9911 or RAAPID South 1-800-661-1700**

- IPC resources are readily available on the [provincial IPC webpage](#) to guide patient management.
- Non-urgent issues should be addressed as usual by contacting your site ICP on the next business day.
- Examples of **urgent** situations may include water release, MDR sterilization failure, building system failures with IPC implications (e.g., sterile core, OR, MDR, airborne isolation rooms) and outbreaks.
- IPC providing on-call will be offsite and **will not have access** to Connect Care or other patient information systems; therefore, will not be able to manage day-to-day patient management (i.e., ARO results and removing additional precautions/clearing of an ARO).
- ICPs at acute care sites review patients on isolation regularly and will ~~continue to~~ provide direction to the nursing staff and document in Connect Care. Direction can be found in the:
  - IPC alert
  - Isolation status
  - Notes (filter by author type – Infection Preventionist)
  - Summary tab – Care team sticky notes
- For calls related to potential respiratory illness (RI) or gastrointestinal illness (GI) outbreaks, IPC will provide guidance to units to prevent further transmission based on zone-specific outbreak management guidelines found on the AHS IPC webpages.
- Clinical management and treatment questions related to infectious diseases should be directed by the attending physician as per current zone processes, which may include to the appropriate Infectious Disease Physician service via RAAPID.
- If staff suspect they have been exposed to a communicable disease or blood and body fluids at work, they are to notify WHS at the on-call number 1-403-343-4620.

For more information contact  
[ipccenzonadmin@ahs.ca](mailto:ipccenzonadmin@ahs.ca)  
© 2024 Alberta Health Services, IPC

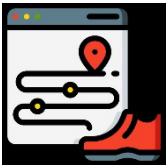
Original date: August 2018  
Revised date: October 2024

## IPC consultation

As manager/charge nurse, you are often the primary point of contact for your ICP. You and your staff may consult an ICP for infection control issues such as:

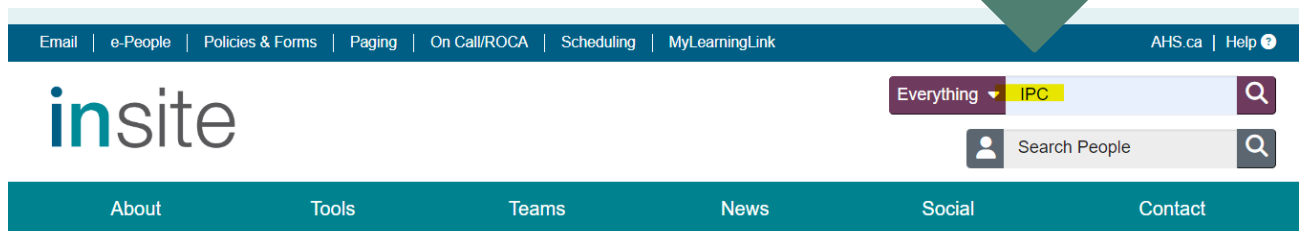
- Appropriateness of additional precautions for patients/residents:
  - Application and discontinuation of additional precautions
  - Screening for patients with a positive ARO (MRSA, VRE, CPO)
  - Specific care plans with respect to IPC (e.g., patient ambulation while on additional precautions)
- Education on related IPC topics
- Determining and managing preventive measures for construction and renovation projects
- Situational events on your unit that require a multidisciplinary consultation (e.g., Environmental Services, FM&E, MDR)
- Connecting with site manager/unit manager to complete a Site Practice Review
- Assessing [Patient Exposure to Blood & Body Fluids](#)
  - Contact WHS for [Staff Risk Assessment Blood & Body Fluid Exposure](#)

The intent of this resource is to guide staff to IPC related information. This document will be located on the [Central Zone tab](#).



**Let's take a tour through our document.**

To access the main IPC webpage search IPC:



In the next screen shot you must choose if you want to go to our [Central Zone webpage](#) or the [Provincial IPC webpage](#).

In this document we are going to walk you through the **provincial pathway first** then Central Zone.

Home > Teams > Infection Prevention & Control

# Infection Prevention & Control

IPC is dedicated to the prevention of health-care associated infections.

To support best practice in Infection Prevention and Control, IPC resources are available to all AHS staff, physicians and partner organizations on the [AHS external website](#).

**Infection Prevention & Control**

- North Contacts & Resources
- Edmonton Contacts & Resources
- Central Contacts & Resources**
- Calgary Contacts & Resources

Click on this link to access **zone** resources and zone IPC contact list.

Click on this link to access **provincial** resources.

**Quick Reference**

- [CSA Standards & Guidelines](#)
- [Hand Hygiene](#)
- [Provincial Contacts](#)
- [Provincial PPE Safety Coach Program](#)
- [Resource manual, training video now available](#)



Access [provincial resources](#) from the yellow highlighted link.

Home | Contact | Staff | Help | Patient Feedback | 311

Alberta Health Services | Healthy Albertans, Health Communities, Together.

811 Health Link | Health Advice 24/7

COVID-19 info | Continuous masking remains in effect at all AHS, APL and Covenant facilities provincially.

ABOUT AHS | FIND HEALTHCARE | INFORMATION FOR | CAREERS | NEWS | AHS IN MY ZONE

## Infection Prevention & Control

Infection Prevention & Control (IPC) is dedicated to **preventing infections** acquired within healthcare facilities.

The [IPC goal](#) is to reduce the incidence of healthcare associated infections in patients, residents, and clients by:

- process and outcome surveillance
- outbreak identification and management
- consultation and education

**Directions for known and suspect diseases (includes additional precautions/isolation)** [More >](#)

**Standard practices and procedures for preventing infections** [More >](#)

**Best practice recommendations to prevent a patient from acquiring a healthcare associated infection** [More >](#)

**Hand Hygiene** [More >](#)

Hand hygiene is the most effective way to prevent the spread of communicable diseases and infections

**Personal Protective Equipment** [More >](#)

Donning and doffing of Personal Protective Equipment (PPE)

**Equipment Cleaning** [More >](#)

Classification for equipment cleaning (see also [Medical Device Reprocessing](#))

**Education & Training** [More >](#)

Courses provide information about health, safety, emergency, information, and privacy requirements

**Surveillance & Reporting** [More >](#)

We collect surveillance data at every acute care facility in the province

**Outbreak Management** [More >](#)

Infectious disease outbreaks occur year round and in different settings

**Quick Links**

[Emerging Issues](#)

Disease & Condition Tables:

- [Acute care](#)
- [Continuing Care](#)

Point of Care:

- [Point of Care Risk Assessment \(PCRA\)](#)
- [Assessing the Need for Additional Precautions: Respiratory \(ILI\) Algorithm](#)
- [Rapid assessment & triage for patients presenting with fever](#)

**Resource & Topics**

[Contact Us](#)

[Coordinating Principles](#)

[External Links](#)

IPC Healthcare Facility Design & Construction

- [IPC Healthcare Facility Design Requirements](#)
- [ICRA & Preventive Measures Toolkit](#)

[Medical Device Reprocessing](#)

[Outbreak Management](#)

[Patient Blood & Body Fluid Exposure](#)

[Patient Care Handouts](#)

[Posters](#)

[Provincial PPE Safety Coach Program](#)

[Single Use Medical Devices](#)

**Related Programs**

[Antimicrobial Stewardship](#)

[Appropriateness of Care: Asymptomatic Bacteriuria](#)

Check out the Quick Links, Resources & Topics and Related Programs on the far-right side of the page.

Click on each box for more information.



## Resource Manuals

The [IPC Acute Care Resource Manual Diseases and Conditions Table](#) supports healthcare providers to manage the care and placement of patients with known or suspected diseases.

The [Continuing Care IPC Resource Manual Diseases and Conditions Table](#) is intended to support staff in caring for residents in continuing care settings.

Below are examples of documents found under the Acute Care and Continuing Care tabs.

- Routine Practices Information Sheet
- Infection Prevention and Control Risk Assessment (IPC RA) / Choosing Personal Protective Equipment (PPE)
- Additional Precautions Information Sheets and Signs
- Assessing the need for Additional Precautions
  - Gastrointestinal Illness (GI)
  - Respiratory Illness (RI)
  - Rashes
  - Wounds

## Additional precautions information

- Refer to the patient's diagnosis and/or lab reports (e.g., *Clostridioides difficile*, meningitis, etc.).
- Look for additional precaution's information sheets in the online [Resource Manuals](#).
- Use N95 respirator based on the [IPC RA](#) and [AGMP Guidance Tool](#).
- Refer to the [Cohorting Principles](#) before cohorting patients on additional precaution.
- [IPC Considerations for Immunocompromised Patients](#).

## Discontinuing precautions

To determine if discontinuing precautions is appropriate:

- Start by referring to the IPC Resource Manual.
- Consult IPC prior to the removal of ARO isolation.

Once precautions are discontinued:

- Ensure Environmental Services (ES) performs a discharge/transfer/isolation clean of patient environment and then remove the additional precautions signage.
- Bath or shower patient in conjunction with environmental room cleaning.
- Arrange for laundering of dirty clothing. Ask family to take home personal items that cannot be cleaned or disinfected.
- Discard facility-supplied personal care products (e.g., creams, lotions) and replace with new products.

For more information contact: [ipccenzadmin@ahs.ca](mailto:ipccenzadmin@ahs.ca)

© 2024 Alberta Health Services, IPC



<https://creativecommons.org/licenses/by-nc-sa/4.0/>

Original date: August 2018

Revised date: October 2024



## Best Practice Recommendations

Best Practice Recommendations are based on evidence and expert opinion and align to meet Alberta Health, Accreditation Canada and Canadian Standards Association requirements.

- [Family and Patient Tip Sheet for Personalizing Spaces in Continuing Care](#)
- [Selection and Management \(Maintenance, Handling, and Cleaning\) of Isolation Carts](#)
- [Isolation Cart Key Points](#)

See the example below for navigating the provincial Best Practice Recommendations.

To use the sortable / searchable table below, you may use a drop down menu to sort the results or to type in a keyword. [See instructions.](#)

Sort by Document Type  
Equipment Cleaning, Disinfect Filter Clear

Search: Prin Showing 1 to 2 of 2 entries (filtered from 43 total entries)  
Show 25 entries

Document Title	Practice Area
3D Printing of Medical Devices	Equipment Selection & Process
<b>Principles for Environmental Cleaning and Disinfection</b> <ul style="list-style-type: none"><li>• <a href="#">Accepted Cleaning Terms and Definitions List</a></li><li>• <a href="#">New Products and Technology</a></li><li>• <a href="#">Ready-to-Use Disinfectant Wipes - Key Points</a></li></ul>	Equipment Cleaning, Disinfection & Storage



## Hand Hygiene

Site-based reviewers are designated by the site manager to complete hand hygiene reviews at the site. Sites with programs (i.e., Cancer Care, Renal Services, Lab) will assign a reviewer for that program.

If you have questions or are looking for hand hygiene resources refer to the hand hygiene webpage under Infection Prevention & Control or contact the [Central Zone Hand Hygiene Project Manager](#).

### Info for Health Professionals

- Policy & Procedure, Guidelines, 4 Moments posters, etc.

### Education and Training for Hand Hygiene

- Interactive Hand Hygiene Learning Module
- Hand Health resources (i.e., FAQ, hand health video)

### Reviews and Reports

- Training requirements for Hand Hygiene Reviewers and Advanced users
- How to purchase an iPad

**Leadership Toolkit** - The Hand Hygiene Leadership Toolkit was developed to help leaders establish team-based hand hygiene initiatives. The toolkit includes background information, resource links, staff engagement activities, and templates to help you inspire your team.

For more information contact: [ipccenzadmin@ahs.ca](mailto:ipccenzadmin@ahs.ca)

© 2024 Alberta Health Services, IPC



<https://creativecommons.org/licenses/by-nc-sa/4.0/>

Original date: August 2018

Revised date: October 2024



## Personal Protective Equipment (PPE)

### Education and Training for Personal Protective Equipment

- Posters for Donning and Doffing of PPE
- Interactive Learning Module – *Personal Protective Equipment and You*

[Alberta Health Services' Provincial PPE Safety Coach Program](#) is a voluntary program, which adopts a peer-to-peer approach. PPE Safety Coaches will be available and accessible on each shift, as experts supporting frontline staff using a friendly, informal and helpful approach to help staff select, don and doff their PPE. If you have questions or would like to establish a PPE Safety Coach Program in your area, please contact the IPC Zone Project Manager for assistance.

[PPE Safety Coach Community of Practice](#) sessions are held regularly for coaches to come together from across the province to discuss and learn from the experiences of others.



## Equipment Cleaning

Refer to the table on this tab for reprocessing information. Always refer to the manufacturer's instructions for use. For information on cleaning particular equipment such as IT equipment and patient lifts, see [Best Practice Recommendations](#).

All equipment used for patient/resident care must be cleaned and disinfected after use. Stethoscopes require a routine deep clean.

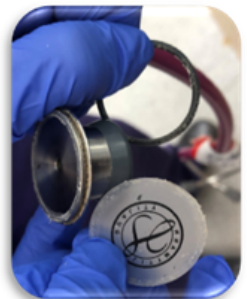
### **Deep Clean for Stethoscopes**

Perform a deep clean on a regular basis or when visibly soiled.

Remove the diaphragm from the rim and clean the parts in soapy water or wipe with a 70% alcohol swab or RTU Wipe. Earbuds can be removed from the ear tubes for thorough cleaning.

Dry all parts and surfaces thoroughly before reassembling the stethoscope.

For more detailed information on cleaning refer to the manufacturer's instructions.



### Additional resources:

- [Key Points for Ready-to-Use \(RTU\) Pre-moistened Disinfectant Wipes](#)

For more information contact: [ipccenzadmin@ahs.ca](mailto:ipccenzadmin@ahs.ca)

© 2024 Alberta Health Services, IPC



<https://creativecommons.org/licenses/by-nc-sa/4.0/>

Original date: August 2018

Revised date: October 2024

- [Storage of Clean and Sterile Supplies in Clinical Areas](#) - supplies are removed from external corrugated cardboard and original shipping packages outside of the clean and sterile storage area before storing. Do not store original shipping packaging in clinic rooms, clean supply rooms, or anywhere where clean equipment or clean supplies are stored.
- [My HealthAlberta Patient Care Handouts](#) e.g., hand hygiene, MRSA to share with patients.
- [Single use/single patient use items](#) - refer to manufacturer's instructions.

NOTE: [Linen and Environmental Services](#) have cleaning guidelines and processes that you may need to reference.

## Cleaning

- [ES-CLN-01 Cleaning Principles](#)
  - [Chemical Concentration Log](#)
- [ES-CLN-02 Cleaning Frequency](#)
  - [Cleaning Frequency Expectation Table](#)
- [ES-CLN-03 Return to Service Cleaning](#)

## Cleaning Processes

These documents establish cleaning processes for the Environmental Services (ES) department. If ES is cleaning the area/item named, ES must follow the process, **however the existence of a document for an area/item does not mean that ES cleans all of these areas/items that exist in AHS.** The scope of service may vary provincially and certain documents may not be applicable in all areas where ES services are provided.

## Cleaning Processes – Areas/Rooms

- [ES-CLN-17 Patient Room/Space - Discharge/Transfer \(Routine\)](#)
- [ES-CLN-18 Patient Room/Space - Discharge/Transfer \(Isolation\)](#)
- [ES-CLN-19 Patient Room/Space - Discharge/Transfer \(Sporicidal\)](#)
- [ES-CLN-36 Patient Room/Space - Occupied \(Routine\)](#)
- [ES-CLN-37 Patient Room/Space - Occupied \(Isolation\)](#)
- [ES-CLN-38 Patient Room/Space - Occupied \(Sporicidal\)](#)
  
- [ES-CLN-14 Corridors/Hallways](#)
- [ES-CLN-15 Corridors/Hallways with Floor Machines](#)
- [ES-CLN-63 Dining Areas \(Contracted RFS\)](#)
- [ES-CLN-61 Dining Rooms \(Patient\)](#)
- [ES-CLN-22 Elevators](#)
- [ES-CLN-23 Entrances and Lobbies](#)
- [ES-CLN-25 Exam/Treatment Rooms - Between Case](#)
- [ES-CLN-26 Exam/Treatment Rooms - End of Day](#)
- [ES-CLN-30 Laboratories](#)
- [ES-CLN-62 Labour and Delivery Rooms](#)
- [ES-CLN-32 Locker Rooms](#)
- [ES-CLN-51 Lounges](#)
- [ES-CLN-33 Medical Device Reprocessing Areas](#)
- [ES-CLN-34 Medication Rooms](#)
- [ES-CLN-35 Nourishment Centres](#)
- [ES-CLN-39 Office Areas](#)
- [ES-CLN-40 OR Theatre – Between Case](#)
- [ES-CLN-41 OR Theatre – End of Day](#)
- [ES-CLN-45 Pharmacy – Non-Sterile Areas](#)
- [ES-CLN-46 Pharmacy – Sterile Compounding Areas](#)
- [ES-CLN-50 Soiled/Clean Utility Rooms](#)
- [ES-CLN-52 Stairs and Landings](#)
- [ES-CLN-55 Waiting Rooms](#)
- [ES-CLN-43 Washrooms - Inpatient](#)
- [ES-CLN-47 Washrooms - Public/Outpatient/Staff](#)
- [ES-CLN-99 Interim Emergency Department \(ED\), Urgent Care Centre \(UCC\) & Dialysis Patient Space – Between Case \(Isolation during COVID-19\)](#)

## Cleaning Processes – Common Items

- [ES-CLN-07 Bassinets, Baby Warmers and Isolettes](#)
- [ES-CLN-08 Beds and Stretchers](#)
- [ES-CLN-13 Commodes](#)
- [ES-CLN-20 Dispenser Cleaning/Replenishment](#)
- [ES-CLN-42 Patient Lift Equipment](#)
- [ES-CLN-48 Refrigerators](#)
- [ES-CLN-49 Sinks and Water Fountains](#)
- [ES-CLN-53 Toilets, Urinals and Hoppers](#)
- [ES-CLN-54 Tubs and Showers](#)
- [ES-CLN-56 Walls](#)
- [ES-CLN-58 Wheelchairs](#)
- [ES-CLN-60 Window Drapes/Blinds](#)

## Cleaning Processes – Common Tasks

- [ES-CLN-09 Bed and Stretcher Making](#)
- [ES-CLN-16 Damp Mopping](#)
- [ES-CLN-21 Dry Mopping](#)
- [ES-CLN-29 High Dusting](#)
- [ES-CLN-64 Cubicle/Privacy Curtain Changing – Disposable](#)
- [ES-CLN-31 Cubicle/Privacy Curtain Changing – Linen](#)
- [ES-CLN-57 Wet Vacuuming](#)

## Cleaning Processes – Other

- [ES-CLN-11 Blood and Body Fluids \(Carpet & Upholstery\)](#)
- [ES-CLN-12 Blood and Body Fluids \(Hard Surfaces\)](#)
- [ES-CLN-27 Floods \(Black Water\)](#)
- [ES-CLN-28 Floods \(Clean/Grey Water\)](#)



## [Outbreak Management](#)

Early recognition of unusual clusters of illness and swift actions in response are essential for effective management of outbreaks.

This provincial IPC webpage has supporting documents to help prevent the spread of infection.

For more information contact: [ipccenzadmin@ahs.ca](mailto:ipccenzadmin@ahs.ca)

© 2024 Alberta Health Services, IPC



<https://creativecommons.org/licenses/by-nc-sa/4.0/>

Original date: August 2018

Revised date: October 2024

# Manager/Charge Nurse Quick Reference Guide

## Acute Care and Continuing Care | 8

Select a Topic

All Resources	Acute Care	Child Care Facilities
Correctional Centres	Continuing Care Homes	Supportive Living Accommodations
Schools	Shelter Sites	

### Acute Care

#### Guide

- [Guide for Outbreak Prevention and Control in Acute Care Sites](#)

#### Risk Assessment

- [Risk Assessment Matrix to Determine MOH Pre-Approval](#)
- [Risk Assessment Worksheet](#)

#### Quick Links

- [Cover Your Cough Poster](#)
- [Contact and Droplet Precautions](#)
- [Contact Precautions](#)

### Continuing Care Homes

(formerly Long Term Care, Designated Supportive Living and Hospice Sites)

#### Guide

- [Guide for Outbreak Prevention and Control in Continuing Care Homes](#)
- [Notice of Change](#)

#### Outbreak Prevention Tools

- [Outbreak Prevention Checklist](#)
- [Surveillance Case Tracking Sheet](#)
- [Advanced Prescriptions for Oseltamivir \(Tamiflu\)](#)
- [Outbreak Antiviral Prophylaxis in Supportive Living Accommodation and Continuing Care Homes Type B Site](#)

#### Outbreak Management Tools

- [Respiratory Outbreak Checklist](#)
- [Gastrointestinal Outbreak Checklist](#)
- [Visiting During Respiratory Illness Outbreaks](#)

#### Risk Assessment

- [Risk Assessment Matrix to Determine MOH Pre-Approval](#)
- [Risk Assessment Worksheet](#)

#### Quick Links

- [IPC Risk Assessment](#)
- [Outbreak Spotlight Poster](#)  
(also available in: [Traditional Chinese](#))
- [Contact and Droplet Precautions](#)
- [Contact Precautions](#)

For more information contact: [ipccenzadmin@ahs.ca](mailto:ipccenzadmin@ahs.ca)

© 2024 Alberta Health Services, IPC



<https://creativecommons.org/licenses/by-nc-sa/4.0/>

Original date: August 2018

Revised date: October 2024



## Emerging Issues | Alberta Health Services

As new infections and disease emerge in our health care settings, changes to standard Infection Prevention and Control practices may be required.

### Infection Prevention & Control

Infection Prevention & Control (IPC) is dedicated to **preventing infections** acquired within healthcare facilities.

The [IPC goal](#) is to reduce the incidence of healthcare associated infections in patients, residents, and clients by:

- process and outcome surveillance
- outbreak identification and management
- consultation and education
- guideline, policy, and procedure development
- research

#### Quick Links

##### Emerging Issues

Disease & Condition Tables:

- [Acute care](#)
- [Continuing Care](#)

Resource Manuals

### Emerging Issues Infection Prevention & Control

As new infections and disease emerge in our health care settings, changes to standard Infection Prevention and Control (IPC) practices may be required. These current and past issues highlight the IPC resources created to manage these special cases.

Jump to topic:

- [Monkey Pox](#)
- [COVID-19](#)
- [Measles](#)
- [SARI - Severe Acute Respiratory Infections \(MERS-CoV\)](#)
- [IPC Tools for Disaster Management](#)
- [Viral Hemorrhagic Fever \(VHF\) / Ebola](#)



Lastly, our tour takes us to the [zone resources](#) (green highlight) and how you can access them.

## Infection Prevention & Control

### Central Zone IPC Contacts & Resources

North Contacts & Resources

Edmonton Contacts & Resources

**Central Contacts & Resources**

Calgary Contacts & Resources

South Contacts & Resources

Corrections Facilities IPC

IPC Healthcare Facility Design & Construction

IPC Accreditation Resources

IPC Document Management

IPC Surveillance

#### Note:

Content has moved to the AHS external website, see:

<https://www.albertahealthservices.ca/info/Page151511.aspx#details-panel15158>

#### Contact Information for Central Zone

- [Contact List](#)

For more information contact: [ipccenzadmin@ahs.ca](mailto:ipccenzadmin@ahs.ca)

© 2024 Alberta Health Services, IPC



<https://creativecommons.org/licenses/by-nc-sa/4.0/>

Original date: August 2018

Revised date: October 2024



Infection Prevention & Control

# Zones

## Infection Prevention & Control

North

Edmonton

Central

Calgary

South

### ***Clostridioides difficile* Infection (CDI) Management**

- [Checklist for Suspect or Confirmed CDI](#)
- [Stool Chart/Bowel Record 2016 Sample Form 20404](#) - Order from DATA Communications
- [Tiered Management of CDI in Acute Care](#)
- [AHS Provincial Contact Precautions Sporicidal Clean](#) (Poster)

### **Outbreak Management**

- [Outbreak Management CZMOH – Acute Care, Long Term Care, Supportive Living](#)
- [Steps in Acute Care Outbreak Management Declaration](#)
- [Central Zone Acute Care Outbreak Management Presentation](#)

### **Patients with Diarrhea Management Tools**

- [Management of Patients with Diarrhea Acute Care](#)
- [Management of Residents with Diarrhea Continuing Care](#)

### **IPC Resources**

- [Manager / Charge Nurse Quick Reference Guide](#)
- [Transportation of Contaminated Medical Devices](#)
- [Isolation Key Points](#)
- [Cleaning & Storage of Loaner Equipment in Home Care Settings](#)
- [Reference Guide: Contracted Provider & Non-Designated Supportive Living Sites](#)
- [Reference Guide: Home and Community Care Managers & Staff](#)
- [Water Release Quick Reference](#)
- [Pre-Construction Planning Guide](#)
- [Mobile Hoarding Tents](#)
- [Respiratory Illness Management in AHS LTC/DSL/Hospice Settings](#)

For more information contact: [ipccenzadmin@ahs.ca](mailto:ipccenzadmin@ahs.ca)

© 2024 Alberta Health Services, IPC



<https://creativecommons.org/licenses/by-nc-sa/4.0/>

Original date: August 2018

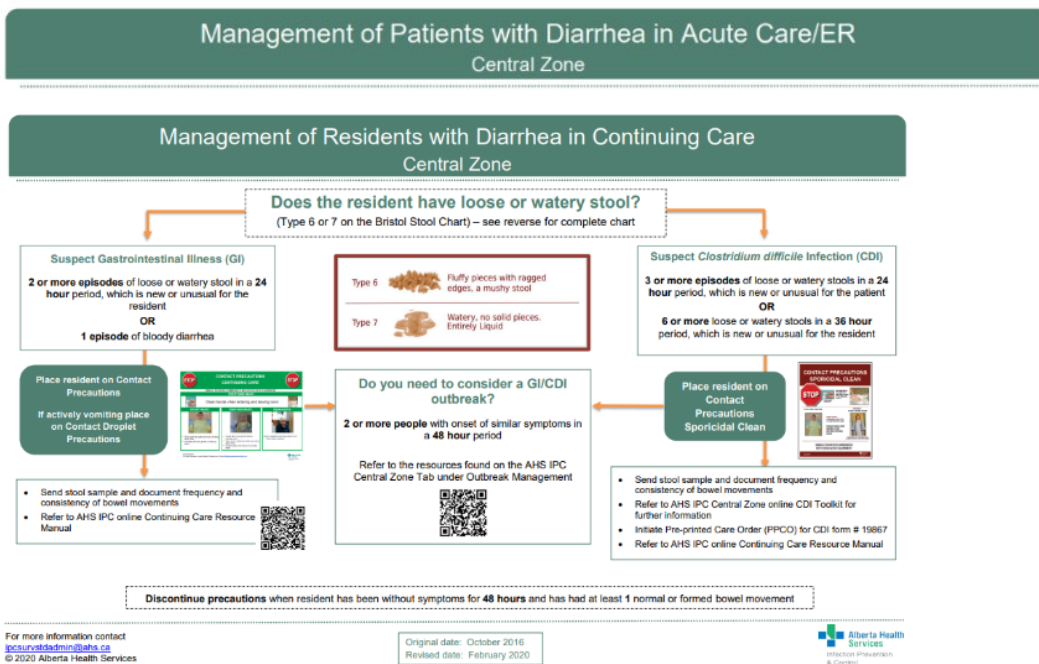
Revised date: October 2024

## Clostridioides difficile infection (CDI)

If you suspect a resident has a *C. difficile* infection:

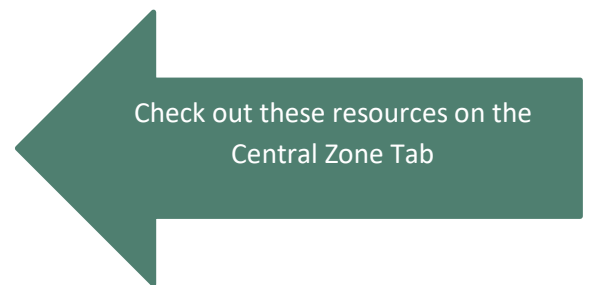
- Initiate [Checklist for Suspect or Confirmed CDI](#)
- Document frequency and consistency of stool. Connect Care: Stool Output/Assessment Flowsheet
- Refer to [Tiered Management of CDI Toolkit](#) to determine if a stool sample should be sent to the lab.
- Place resident on additional precautions ([Contact Sporicidal](#)).
- Initiate CDI Treatment Order Set – *contact site Pharmacist*

## Diarrhea management tools



## IPC Resources

- [Manager / Charge Nurse Quick Reference Guide](#)
- [Transportation of Contaminated Medical Devices](#)
- [Isolation Key Points](#)
- [Cleaning & Storage of Loaner Equipment in Home Care Settings](#)
- [Reference Guide: Contracted Provider & Non-Designated Supportive Living Sites](#)
- [Reference Guide: Home and Community Care Managers & Staff](#)
- [Water Release Quick Reference](#)
- [Pre-Construction Planning Guide](#)
- [Mobile Hoarding Tents](#)
- [Respiratory Illness Management in AHS LTC/DSL/Hospice Settings](#)



For more information contact: [ipccenzadmin@ahs.ca](mailto:ipccenzadmin@ahs.ca)

© 2024 Alberta Health Services, IPC



<https://creativecommons.org/licenses/by-nc-sa/4.0/>

Original date: August 2018

Revised date: October 2024

## Outbreak Management

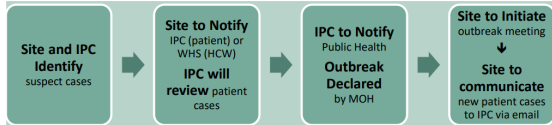
- [Outbreak Management CZMOH – Acute Care, Long Term Care, Supportive Living](#)
- [Steps in Acute Care Outbreak Management Declaration](#)

Takes you to the Central Zone MOH webpage

### Acute Care Steps in Outbreak Declaration Central Zone Infection Prevention and Control (IPC)

Resource: [Acute Care Outbreak Guide | Alberta Health Services](#)

This tool is designed to assist site managers in leading an Acute Care outbreak, and to define IPC's support role during the outbreak.



A new resource designed to assist site managers in leading outbreaks in Acute Care.

#### Step 1 - Site and IPC responsibilities

Suspect cases identified (2 or more inpatients or healthcare workers)

#### Step 2 - Site responsibilities

Medical Officer of Health Bulletins
MOH - Central Zone
Acute Care Outbreak Management
Child Care Outbreak Management
Long Term Care Outbreak Management
Supportive / Home Living Outbreak Management
Provincial Correctional Outbreak Management
Shelters Outbreak Management
Summer Camps Outbreak Management
MOH - Edmonton Zone
Medical Officer of Health - North Zone

## Central Zone - MOH

Medical Officer of Health, Medical Staff

### Outbreak Management

#### Information For

- [Acute Care](#)
- [Child Care](#)
- [Long Term Care](#)
- [Provincial Correctional](#)
- [Schools](#)
- [Summer Camps](#)
- [Shelters](#)
- [Supportive / Home Living](#)
- [Work Camps](#)

### Resources

#### Animal Exposure Investigations

- [Animal Exposure Assessment Algorithm](#)
- [Animal Exposure Referral](#)
- [Patient Care Sheet: Domestic Animal Exposure](#)

#### Blood & Body Fluid Exposures (BBFE)

- [BBFE Central Zone Risk Assessment](#)
- [BBFE Know the Facts Brochure](#)
- [Blood & Body Fluid Exposure Testing Requisition Form 21150](#)
- [Post-Exposure Management & Prophylaxis Guidelines](#)

#### Clostridium difficile Infections (CDI)

- [Central Zone CDI Toolkit Facilities with AHS IPC Support](#)

#### Fentanyl

- [Fentanyl - Naloxone Education Presentation & FAQ](#)

#### Immunization

- [AHS Immunization Program Standards Manual](#)

#### Tetanus

- [Central Zone Guide to Wound Tetanus Prophylaxis in Emergency Departments](#)
- [Central Zone Tetanus Assessment Following Animal Bite](#)

### News / Updates

#### Medical Officers of Health

Visit [ahs.ca/moh](#) for:

- Bulletins
- Current Advisories
  - Air Quality
  - Blue Green Algae
  - Heat
- Government Website Links
- Health Topics
- Provincial Outbreak Management
- Surveillance in Alberta

### Contact Info

#### Zone Contacts

[MOH Role & Contact Info](#)  
(service listing)

[Public Health Contact Info](#)  
(poster)

#### Contact Us

Email: [moh.central@ahs.ca](mailto:moh.central@ahs.ca)



walking tour icon  
created by Smashicons-FlatIcon

Snapshots taken Aug 2024/Oct 2024

For more information contact: [ipccenzadmin@ahs.ca](mailto:ipccenzadmin@ahs.ca)

© 2024 Alberta Health Services, IPC



<https://creativecommons.org/licenses/by-nc-sa/4.0/>

Original date: August 2018

Revised date: October 2024