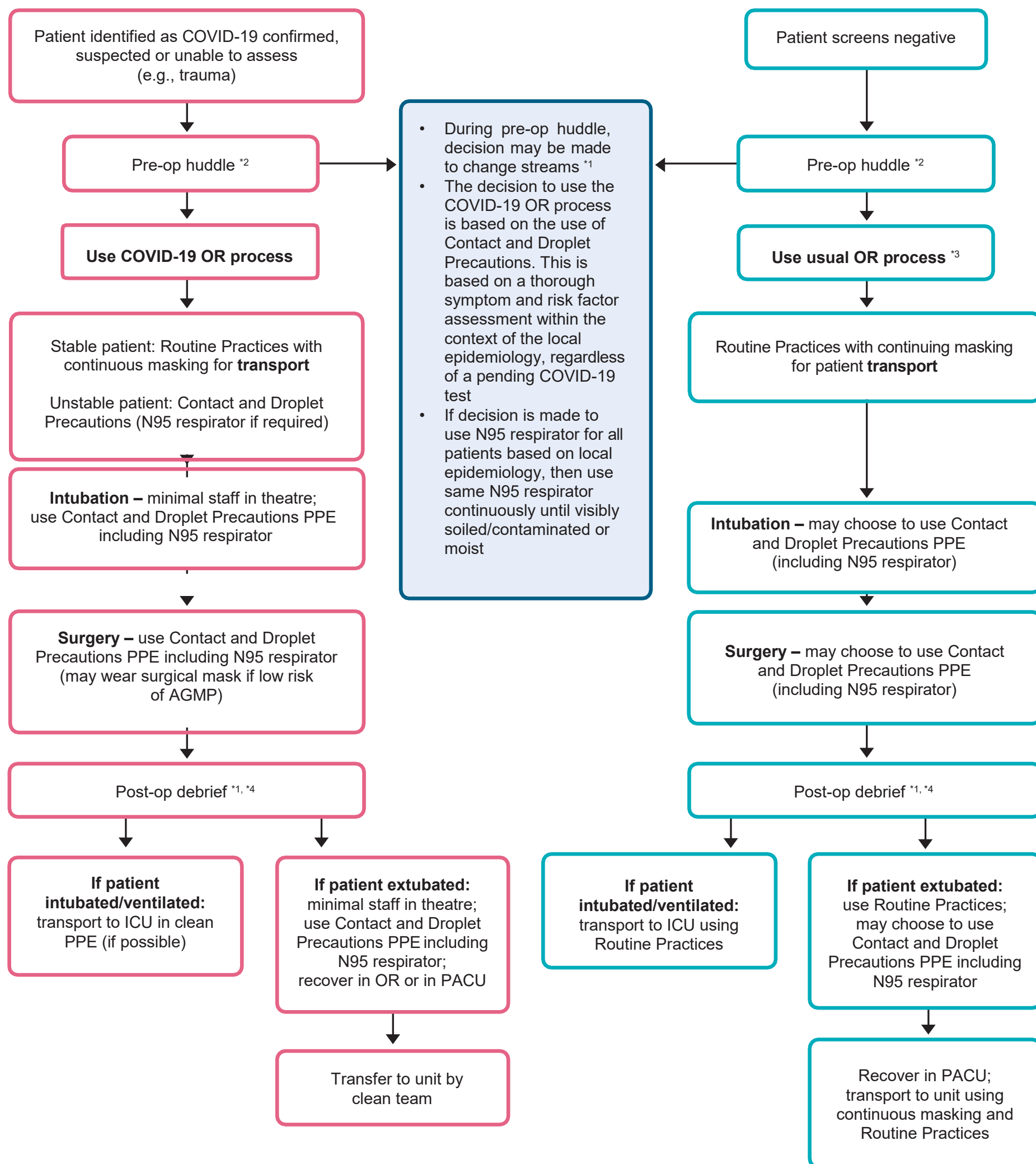


Point-of-care Risk Assessment for Surgery during COVID-19

- Decisions made using this algorithm should be within the context of the local epidemiology.
- Suspected or confirmed COVID-19 patients can be managed in any OR theatre.
- Designated COVID-19 OR theatres are no longer recommended.



*COVID-19 OR Algorithm Notes

1. Communication to PACU occurs in pre-operative huddle; changes must be communicated clearly during the post-operative debriefing.
2. Pre-operative huddle: Confirm whether patient is in COVID-19 confirmed, suspected, or unable to assess stream, or non-COVID-19 stream. Discuss disposition of the patient including intra-operative and postoperative PPE requirements.
3. The decision to use Contact and Droplet Precautions PPE including use of a N95 respirator when patient screens negative is based on clinical judgement within the context of the local epidemiology.
4. Post-operative debriefing: communicate to PACU if any change to care plan or post-operative recovery location. If no changes, follow Routine Practices and proceed with standard patient care.
5. Refer to [IPC PPE Table for Surgical Suites during COVID-19](#).