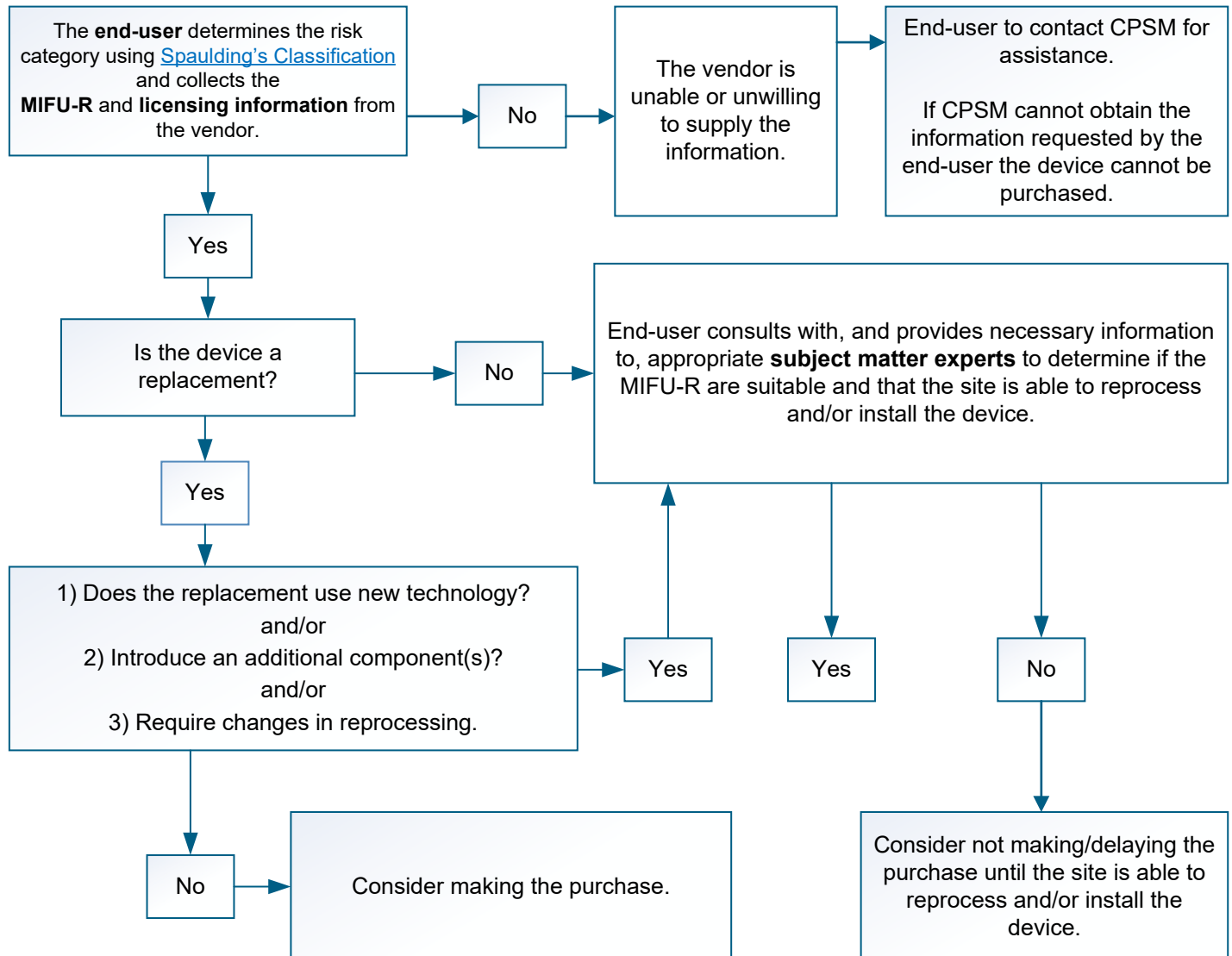


Purchasing Medical Devices Decision Support Algorithm

This algorithm is based on the [Purchasing Medical Devices suite of information sheets](#). The information sheets were developed by the Infection Prevention and Control Equipment Purchasing Working Group in consultation with Workplace Health and Safety (WHS), Information Technology, Contracting Procurement and Supply Management (CPSM), Capital Management (including Clinical Engineering, Facilities Maintenance and Engineering, and Project Management) and Medical Device Reprocessing Department (MDRD) representatives. For details on [Management of Loaned and Reusable Medical Devices, including trial devices](#), please see policy PS-91.



End-user: means requester, purchaser, or decision-maker authorizing the purchase.

MIFU-R: manufacturer's instructions for use - reprocessing.

Subject Matter Experts: CPSM, Capital Management, MDRD, IT, WHS and Infection Prevention and Control.

Licensing information: includes Medical Device Licenses and Medical Device Establishment Licenses (MDEL).

Loaned and reusable medical devices: Are as defined in Policy PS-91. A critical and semi critical medical device that is used by a healthcare facility under an arrangement based on lending or trial use of new medical devices. Additional notes in policy.

Trial Device: See loaned and reusable medical device.

Please note purchases above \$5000 may be subject to further review.