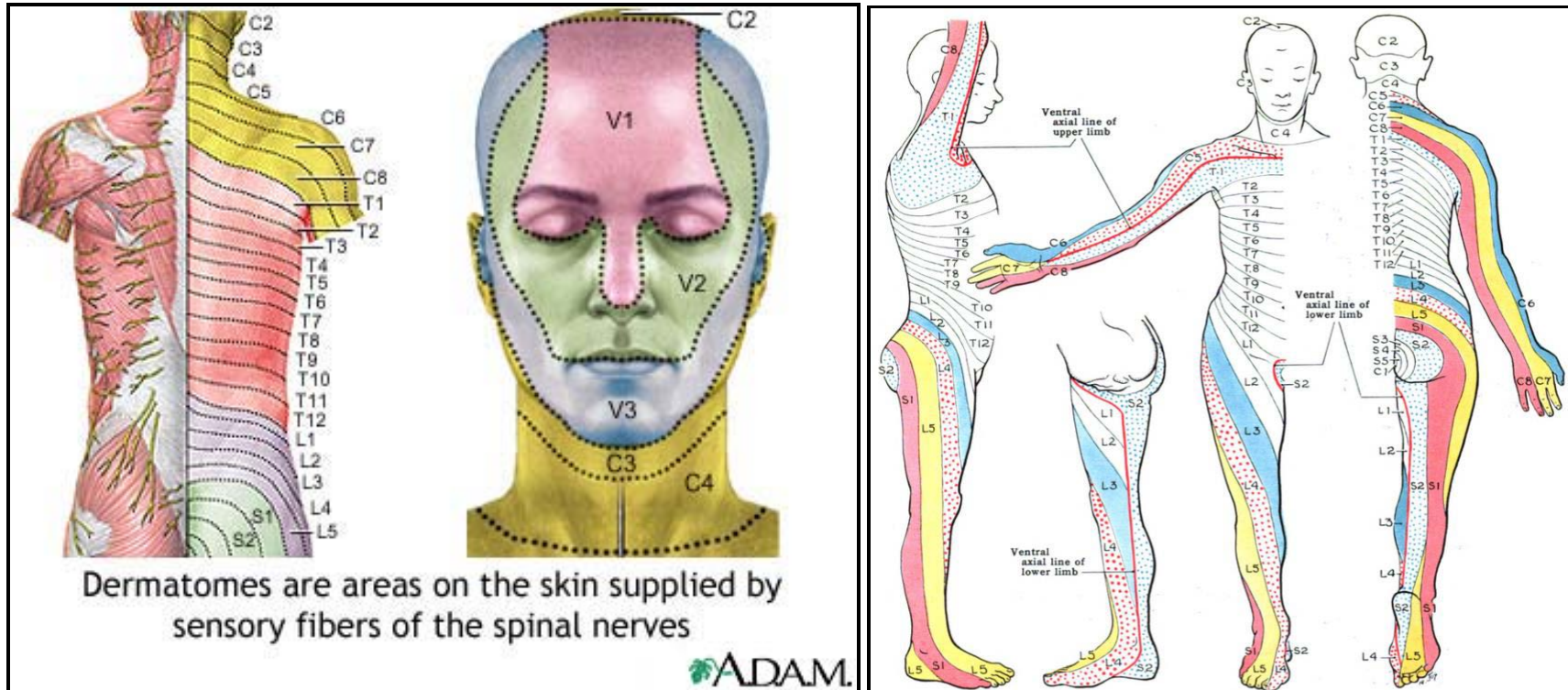


Information for Healthcare Providers

Dermatome Chart

September 2018

Use this dermatome chart to determine the extent of vesicular lesions that involve multiple areas. Each labelled section (i.e. T10, V2) is one dermatome.



References:

A.D.A.M. (2010). Adult dermatome. Retrieved September 12, 2018 from

<https://medlineplus.gov/ency/imagepages/18069.htm>

Grant, John Charles Boileau - An atlas of anatomy, / by regions 1962 retrieved October 24, 2017 from

[https://en.wikipedia.org/wiki/Dermatome_\(anatomy\)#/media/File:Grant_1962_663.png](https://en.wikipedia.org/wiki/Dermatome_(anatomy)#/media/File:Grant_1962_663.png)