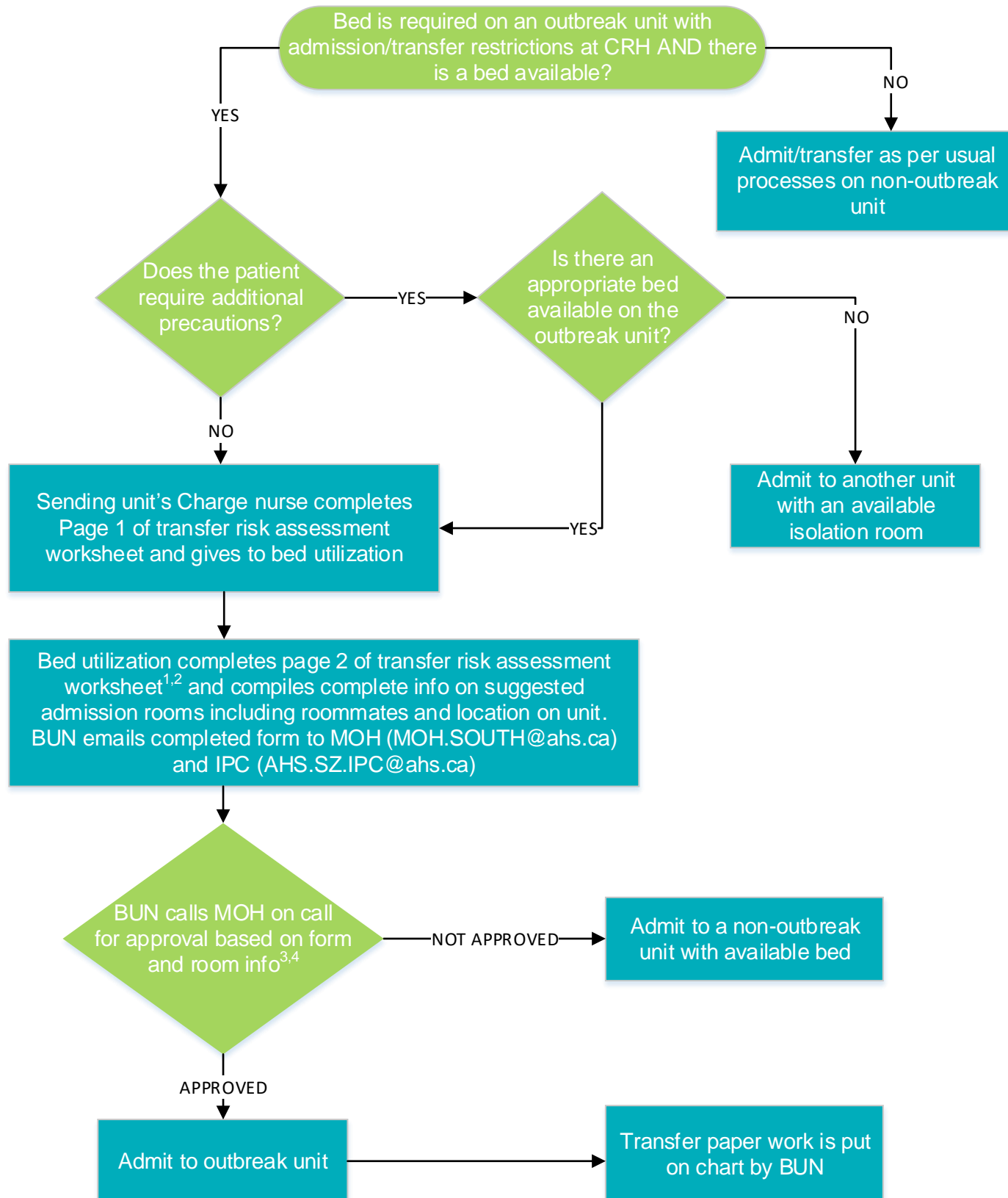


# Admission to Outbreak Unit Process - CRH



## Notes about the process

1. Bed utilization will complete page 2 of risk assessment in consultation with receiving unit. Both pages of the transfer form are to be sent together.
2. Transfer to outbreak unit must be confirmed with the attending physician prior to requesting approval from MOH.
3. Bed utilization is responsible for collecting additional information prior to contacting MOH on call and must include:
  - a. description of available rooms (single, double, unit location);
  - b. details on suggested roommate (if applicable).
4. All conversations with the MOH will be through bed utilization.
5. If you have multiple admissions, consider grouping information sent to MOH.
6. Bed utilization and ER will plan, if necessary, to manage transfers between midnight and 8am.