
Glove Use – Practice Scenarios

Best Practice Recommendations

For more information contact ipcsurvstdadmin@ahs.ca
© 2020 Alberta Health Services

Original date: June 2016
Revised date: June 2020

Outline

- Review some of the key points of glove use
- The following scenarios were developed to address common myths about glove use

Glove do's

Do:

- Perform hand hygiene before accessing gloves
- Select proper fit and type of glove
- Change gloves:
 - between clients
 - between procedures on the same client
 - after completing tasks prior to touching the environment
 - before leaving client environment unless handling grossly contaminated equipment
 - when holes or tears are noticed
- Discard disposable gloves after use

Glove don't's

Don't:

- use gloves to access clean supplies
- touch common items with dirty gloves (i.e., phones, computers, light switches, client charts/files)
- use alcohol-based hand rubs while wearing gloves
- reuse or wash single-use gloves
- wear artificial nails or long fingernails or jewellery that may snag, tear or puncture gloves
- use gloves as a substitute for hand hygiene

Test your knowledge



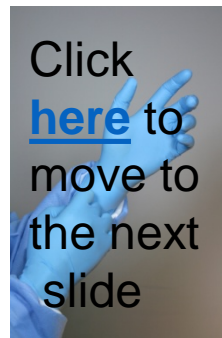
Should this healthcare worker be wearing gloves to access clean supplies?

Yes

No

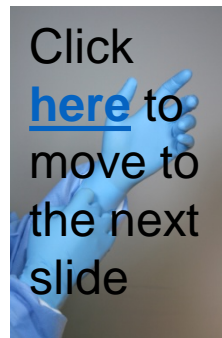
Incorrect

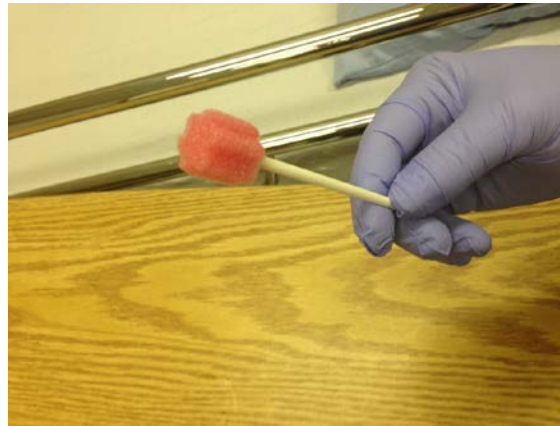
- Gloves should not be worn - clean supplies and linen should be accessed with clean hands, not gloved hands.



Correct

- Gloves should not be worn - clean supplies and linen should be accessed with clean hands, not gloved hands.





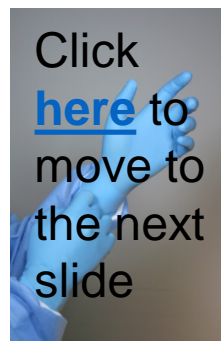
Change gloves between tasks on the same patient and/or between patients. Remove gloves after removing waste from the room and perform hand hygiene before starting a clean task such as making a bed.

True

False

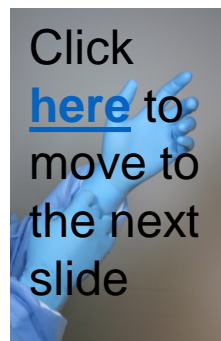
Incorrect

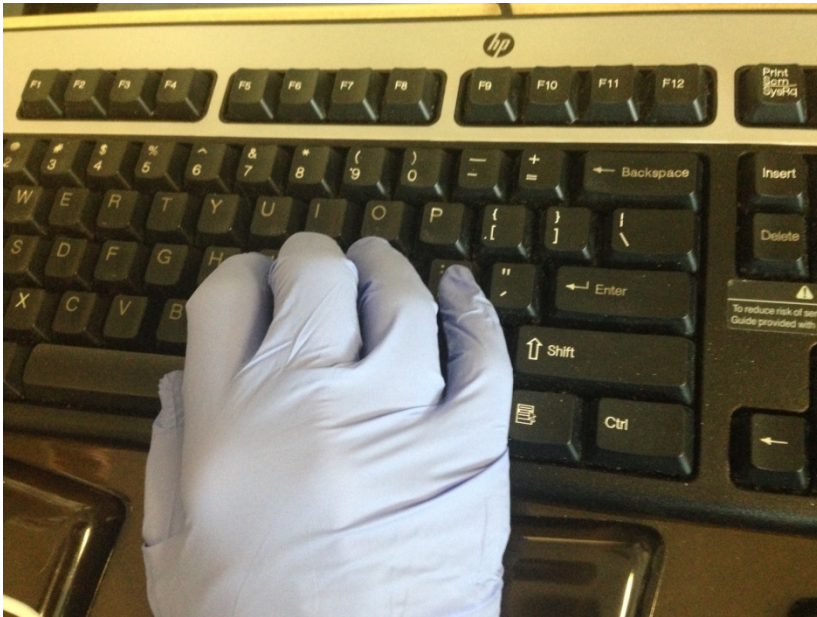
- There is a risk of contamination from one body site to another. Always change gloves and remember hand hygiene!
- Always remove gloves after a dirty task, perform hand hygiene, and then continue with a clean task.



Correct

- There is a risk of contamination from one body site to another. Always change gloves and remember hand hygiene!
- Always remove gloves after a dirty task, perform hand hygiene, and then continue with a clean task.





Wearing gloves everywhere protects staff from infection.

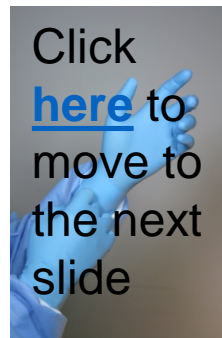
True

False



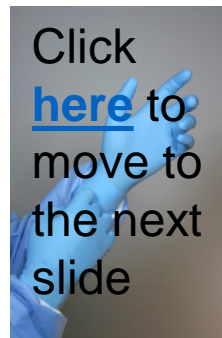
Correct

- Contaminated gloves or hands transfer bacteria/germs onto the devices. Wearing soiled gloves while using a computer or while drinking coffee puts you and others at risk of infection.



Incorrect

- Contaminated gloves or hands transfer bacteria/germs onto the devices. Wearing soiled gloves while using a computer or while drinking coffee puts you and others at risk of infection.



Nails

If gloves are worn, it is okay to have long nails or nail enhancements.

True

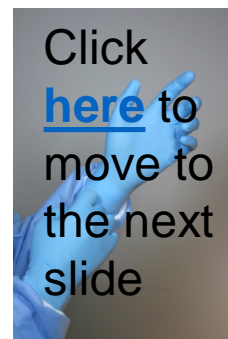
False



Incorrect

- Artificial nails, nail enhancements (including gel and acrylic nails) and nail tips that exceed six (6) mm or 0.25 inches may tear the glove and trap germs.

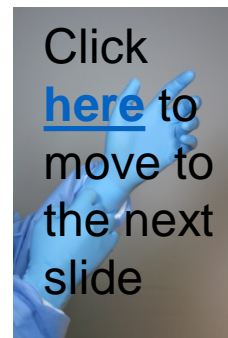
[Hand Hygiene Policy PS-02](#)



Correct

- Artificial nails, nail enhancements (including gel and acrylic nails) and nail tips that exceed six (6) mm or 0.25 inches may tear the glove and trap germs.

[Hand Hygiene Policy PS-02](#)



Jewelry

This staff member must remove the rings with stones.

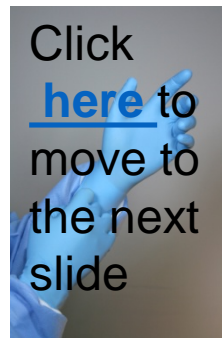
True

False



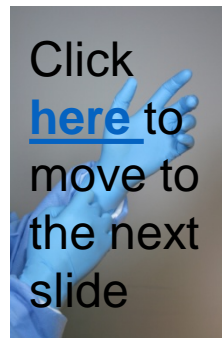
Incorrect

- Rings with stones should not be worn as the stones may tear the gloves. If powdered gloves are worn, the powder will get imbedded around the stones.



Correct

- Rings with stones should not be worn as the stones may tear the gloves. If powdered gloves are worn, the powder will get imbedded around the stones.



Glove selection

If double gloves are worn, the outside glove protects the inside glove and hand hygiene is not required.

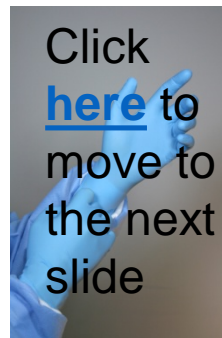
True

False



Incorrect

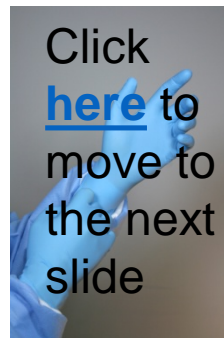
- Double gloving is used only in specific circumstances for protection of the healthcare provider. **ALWAYS** perform hand hygiene after removing gloves.



Click
[here](#) to
move to
the next
slide

Correct

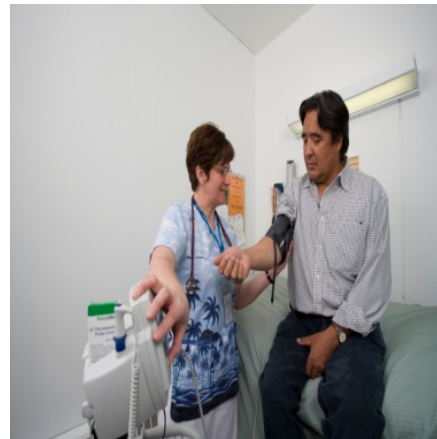
- Double gloving is used only in specific circumstances for protection of the healthcare provider. **ALWAYS** perform hand hygiene after removing gloves.



Glove Selection

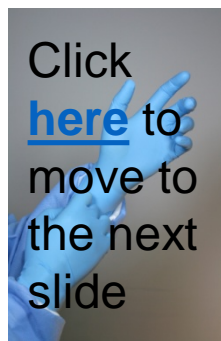
Choose gloves based on:

- a. point-of-care risk assessment
- b. signature on entry to room
- c. glove selection algorithm
- d. all of the above



Glove Selection

- All of the responses are correct
- Point-of-care risk assessment, signage on entrance to a room (e.g., Contact Precautions) and the Glove Selection Algorithm (Refer to Appendix A of BPR) are tools to guide glove selection



Questions?

- If you have any questions or comments regarding the information in this Best Practices Recommendation, please contact ipcsurvstdadmin@ahs.ca