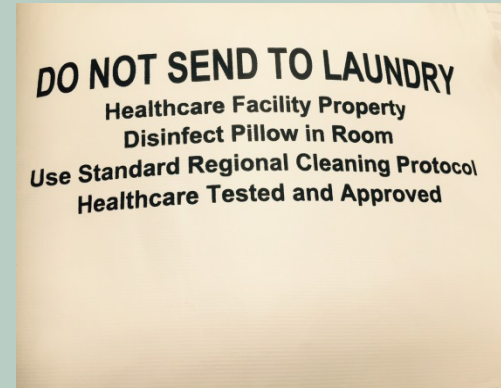


Mattresses, Pillows, and Covers: IPC Recommendations



Developed by the Infection Prevention and Control (IPC) Document Revision Working Group for the Best Practices Recommendation for Mattresses, Covers, and Pillows

For more information contact ipcsurvstdadmin@ahs.ca
© 2020 Alberta Health Services

Original date: June 2016
Revised date: April 2020

Purpose

To describe the Infection Prevention and Control (IPC) best practices for evaluation, cleaning, maintenance, and repair of mattresses, covers, and pillows (including multi-client positioning pillows).

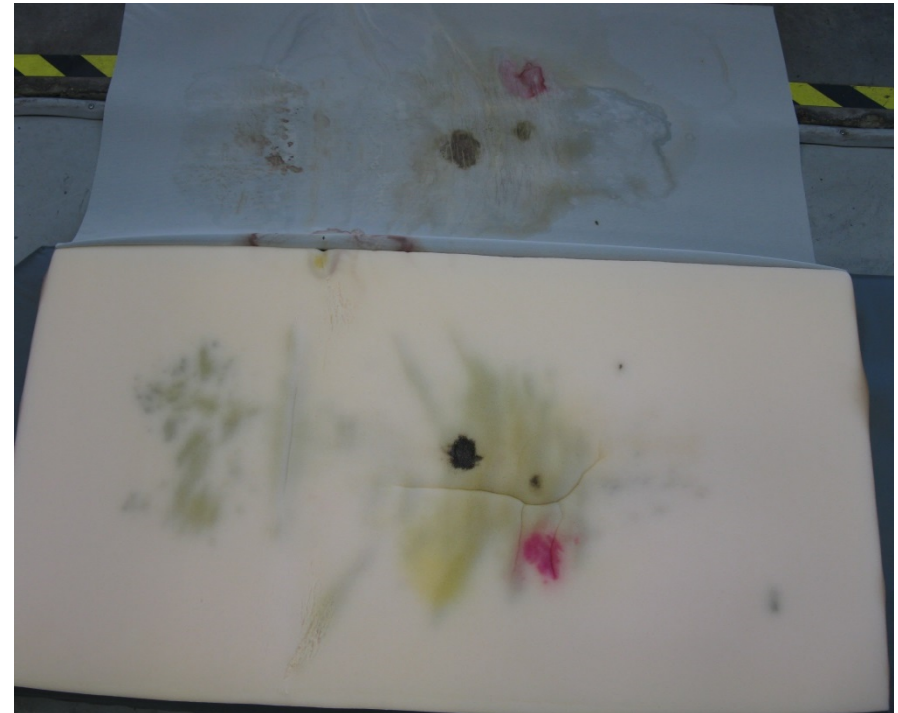
Application

These recommendations apply to all loaned, rented, trialed, and purchased mattresses, pillows, and related covers.

Background: Risk to patients

“Over time, hospital bed mattress covers can wear out and allow blood and body fluids to penetrate and get trapped inside mattresses. If blood or body fluids from one patient penetrate and get absorbed in a mattress, the fluids can leak out the next time the mattress is used. Coming into contact with these fluids poses a risk of infection to patients using the bed.”

Source: Covers for Hospital Bed Mattresses: Learn How to Keep Them Safe. 2017. Retrieved from <https://www.fda.gov/medical-devices/hospital-beds/covers-hospital-bed-mattresses-learn-how-keep-them-safe>



Damaged mattress cover pulled back to show soiling of internal components

Background: Risk to patients

Bradbury *et al* investigated a “near miss” situation in which blood from a previous patient seeped through a mattress onto the skin of a newly admitted patient

- 177 of 656 hospital bed mattresses were found to be contaminated from undetected damage to mattress covers
- Similarly a 1994 comprehensive audit in a UK hospital found damage to 261 of 927 mattresses severe enough to require immediate replacement
- Soiling of interior mattress components can occur when the water-repellent/water-proof qualities of the outer surface become degraded through frequent cleaning with disinfecting solutions, compromised zippers and small tears

Source: Bradbury SL,, Mack D., Crofts T., Ellison RT. Brief Report. Potential Bloodborne Pathogen Exposure from Occult Mattress Damage. American Journal of Infection Control 42 (2014) 421-2

Evaluation

Who should be consulted prior to buying?
Consider:

- Contracting, Procurement and Supply Management (CPSM)
- Infection Prevention and Control
- Workplace Health and Safety
- Linen and Environmental Services
- End user department
- Facilities Maintenance and Engineering

Evaluation... Before Buying!

- Review manufacturer's written instructions (cleaning and maintenance).
- Is there a way to track the products?
 - For warranty
 - For plans for replacement
- Prior to selection and purchase of a repair system, evaluate the repair product's plan/resources for staff training and skill assessment.

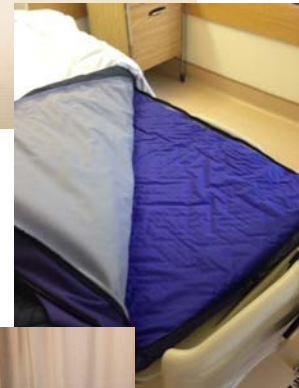
Evaluation... Before Buying! (cont.)

IPC considerations to look for:

- Water repellent surface
- Durable
- Easy to clean and dry

Cleaning and Disinfection

1. Follow the manufacturer's instructions for cleaning and disinfection
2. Pillows have a sealed, moisture impervious cover.
 - Clean and disinfect at the point of use. Do not send to laundry
3. Some mattress covers are removable for laundering.
4. Regularly inspect mattress surfaces, covers, seams and zippers for proper function and damage including wear, tears, cracks, punctures, permanent odors and stains
 - Report damaged mattresses according to protocol
 - For stained surfaces (Facilities Maintenance and Engineering, or others trained to do so) inspect internal components



Some covers can be removed for laundering



Protection from Damage

- Do not place any furniture or sharp objects on mattresses
- While handling sharps (e.g., needles) avoid damaging the mattress
- Protect the mattress with padding if care includes use of devices with sharps or protruding components (e.g., cutting instruments or patients with pins or nails such as Steinman pins and K-wires)

Maintenance

- Remove damaged mattresses, pillows and covers from service
- Do not use pillow/mattress protectors or tape to cover or “repair” damage



Repairs

- Use only Health Canada Approved Repair Systems (Establishment License)
- Does the manufacturer have staff training resources?
- Repairs are made by personnel trained to perform repairs (e.g., Facilities Maintenance and Engineering, or others trained to do so) according to manufacturer's instructions for use
- Follow manufacturer's instructions for use (both the mattress and repair system) regarding repair



Questions?

- If you have any questions or comments regarding this information, please contact Infection Prevention & Control at ipcsurvstdadmin@ahs.ca