

# Cervical Cancer



February 2011

2008 Report on Cancer Statistics in Alberta

## Acknowledgements

This report was made possible through Alberta Health Services, Surveillance and Health Status Assessment, Cancer Surveillance and the many contributions of staff and management across Alberta Health Services as well as external agencies and individuals.

The authors wish to thank individuals working in the following AHS departments and partner agencies for their contributions to this report: Decision Support Strategies, Alberta Cancer Registry, Alberta Health and Wellness and Statistics Canada. Contributions included provision of information, analysis and interpretation, and assistance with consultation sessions and communication of the report.

- *Report Editor:*  
**Dr. Juanita Hatcher**, Director, Cancer Surveillance
- *Project Coordinator:*  
**Barry Obondo**, Information Dissemination Coordinator
- *Analysis and Review:*  
**Terra Birkigt**, Environmental Exposure Analyst  
**Amy Colquhoun**, Information Specialist  
**Angela Eckstrand**, Assistant Program Analyst  
**Zhichang Jiang**, Surveillance Analyst  
**Anthony Karosas**, Surveillance Analyst  
**Anmmd Karuzzaman**, Surveillance Analyst  
**Dr. Fengxiao Li**, Survey Analyst  
**Chris Normandeau**, Operations Manager  
**Dr. Zhenguo Qiu**, Biostatistician  
**Dr. Juhee Suwal**, Manager, Survey Unit  
**Mengzhe Wang**, Manager, Analytical Team  
**Julie Zhang**, Survey Analyst
- *Design/Production Coordinator:*  
**Clare Hildebrandt**, Manager, Decision Support Strategies  
**Denise Pennicott**, Information Design Specialist

### Suggested Citation:

Cancer Surveillance: 2008 Report on Cancer Statistics in Alberta. Edmonton: Surveillance and Health Status Assessment, Alberta Health Services, 2010.

### For More Information:

Visit our website: <http://www.albertahealthservices.ca/1703.asp>

### Cancer Surveillance

#### Surveillance and Health Status Assessment

#### Alberta Health Services

Telephone: (780) 643-4496

Fax: (780) 643-4380

Email: [ACB.surveillance@albertahealthservices.ca](mailto:ACB.surveillance@albertahealthservices.ca)

Surveillance and Health Status Assessment

Cancer Surveillance

**Table of Contents**

<b>Purpose of the Report</b>	4	<b>Incidence and Mortality</b>	8
<b>Navigating the Report</b>	4	<b>Relative Survival</b>	11
<b>Data Notes</b>	4	<b>Data Sources and Quality</b>	13
<b>Summary</b>	5	<b>Glossary of Terms</b>	14
<b>Probability of Developing and Dying from Cancer</b>	5	<b>References</b>	17
<b>Potential Years of Life Lost</b>	6	<b>Contact Information</b>	17
<b>Prevalence</b>	7		

## Purpose of the Report

Cancer Surveillance, a specialized team within Surveillance and Health Status Assessment, Alberta Health Services actively contributes to Becoming the Best: Alberta's 5-year Health Action Plan and the goal to create the best-performing publicly funded health system in Canada. This is accomplished by conducting cancer **surveillance** through the collection, integration, analysis and dissemination of cancer related data and information.

The report is designed to provide comprehensive and detailed information regarding cancer in Alberta. It will help support health professionals, researchers and policy makers in the planning, monitoring and evaluation of cancer-related health programs and initiatives. It will also be a useful education tool for the general public and media.

## Navigating the Report

This document provides information on cervical cancer statistics in Alberta. Details about individual cancer types are available within separate documents. The words highlighted in **dark blue** are terms described in detail within the **Glossary**.

## Data Notes

In this document, the term "cancer" refers to **invasive cancers** unless otherwise specified. It is important to note that this document contains both actual and estimated data; distinctions are made where applicable. The numbers published in this report should be considered provisional, as a few cases and deaths may be registered in subsequent years. The data in this report reflect the state of the Alberta Cancer Registry as of August 6, 2010.

For detailed descriptions about data sources and how they affect data presented in this report, please see the **Data Sources and Quality** section.

## Summary

- Approximately **1 in 135** females will develop cervical cancer within their lifetime.
- In 2008, **828** potential years of life were lost due to cervical cancer.
- As of December 31, 2008, approximately **2,570** Albertans were living with cervical cancer.
- From 1988 to 2008\*, cervical cancer **incidence rates have remained stable**.
- From 1988 to 2008\*, cervical cancer **mortality rates have decreased**.
- In 2008, there were **144** new cases of cervical cancer in Alberta and **30** deaths due to the disease.
- If current trends continue, approximately **170** cases of cervical cancer are expected to be diagnosed in 2013.
- The five-year relative survival for cervical cancer in Alberta is approximately 80% for those diagnosed between 2006 and 2008.

The five-year relative survival for cervical cancer in Alberta is approximately 80% for those diagnosed between 2006 and 2008.

## Probability of Developing and Dying from Cervical Cancer

The **probability of developing or dying of cancer** measures the risk of an individual in a given age range developing or dying of cancer, and is conditional on the person being non-Hodgkin lymphoma free prior to the beginning of that age range.

It is important to note that the probabilities of developing and dying of cancer represent all of Alberta's population on average and should be interpreted with caution at the individual level as the probabilities will be affected by the risk behaviours of the individual. In addition, someone diagnosed with cancer has a higher probability of developing another cancer in the future.<sup>1</sup>

**Table 12-1: Probability of Developing Cervical Cancer by Age, Females, Alberta, 2006-2008**

Age Group	Females
Lifetime Risk (all ages)	1 in 135
0 - 20	Less than 1 in 10,000
20 - 30	1 in 1,560
30 - 40	1 in 720
40 - 50	1 in 641
50 - 60	1 in 814
60 - 70	1 in 817
70 - 80	1 in 1,101
80+	1 in 896

Data Source: Alberta Cancer Registry, Alberta Health and Wellness

The probability of developing cervical cancer varies with age (**Table 12-1**). Approximately 1 in 135 females will develop invasive cervical cancer in their lifetime.

\* Year range represents the period over which the most recent significant trend was observed.

On a population basis the probability of developing cervical cancer by the end of the age range for a cervical cancer-free individual at the beginning of the age range are shown in the bottom eight rows of **Table 12-1**. For instance, a cervical cancer-free female representative of the general population at age 40 has a 1 in 641 chance of developing cervical cancer by the time she is 50. Females in the 40-50 age range are most likely to be diagnosed with cervical cancer.

The probability of dying from cervical cancer in females varies by age (**Table 12-2**). Approximately 1 in 484 females will die of invasive cervical cancer.

On a population basis the probability of a cancer-free individual at the beginning of the age range dying from cervical cancer by the end of the age range are shown in the bottom eight rows of the **Table 12-2**. For example, a cancer-free female representative of the general population at age 40 has a 1 in 3,268 chance of dying from cervical cancer by the time she is 50.

### Potential Years of Life Lost

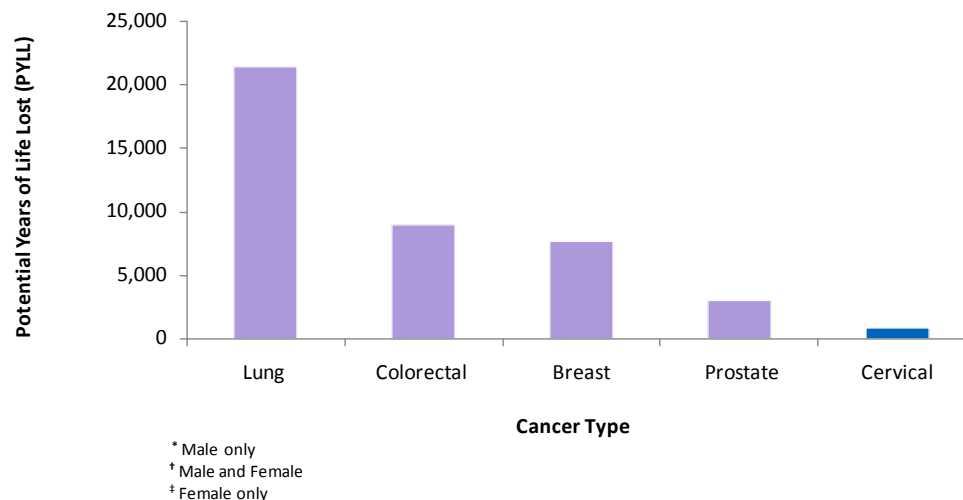
One frequently used measure of premature death is **potential years of life lost (PYLL)**. PYLL due to cancer is an estimate of the number of years that people would have lived had they not died from cancer. PYLL due to cancer has been calculated by multiplying the number of deaths in each age group and the absolute difference between the mid-point age of an age group and the age-specific life expectancy. The age-specific life expectancy is calculated by determining the age to which an individual would have been expected to live had they not died from cancer. PYLL is one way to measure the impact, or burden, of a disease on a population.

**Table 12-2: Probability of Dying from Cervical Cancer by Age, Females, Alberta, 2006-2008**

Age Group	Females
Lifetime Risk (all ages)	1 in 484
0 - 20	Less than 1 in 10,000
20 - 30	Less than 1 in 10,000
30 - 40	1 in 6,061
40 - 50	1 in 3,268
50 - 60	1 in 2,717
60 - 70	1 in 2,577
70 - 80	1 in 2,571
80+	1 in 1,305

Data Source: Alberta Cancer Registry, Alberta Health and Wellness, Canadian Cancer Society

**Figure 12-1: Potential Years of Life Lost (PYLL) from Cervical Cancer\* Compared with Lung†, Colorectal‡, Breast\* and Prostate‡ Cancers, Alberta, 2008**



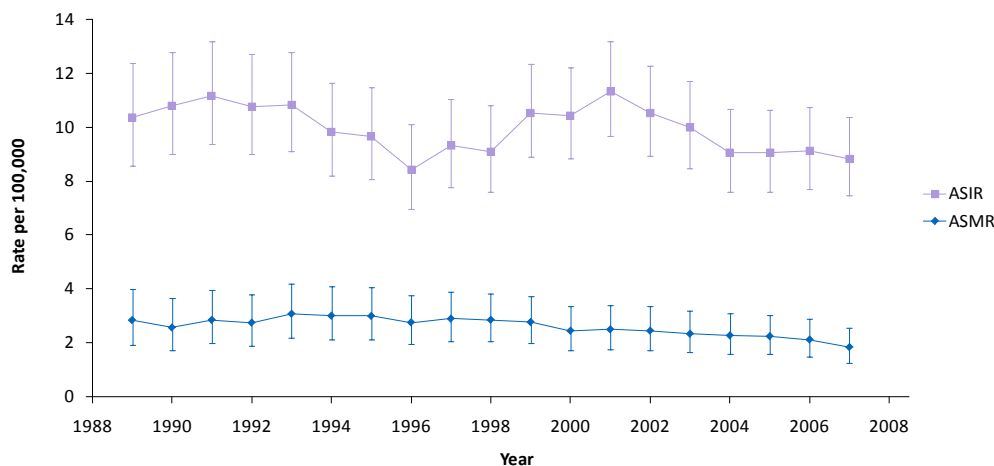
Data Source: Alberta Cancer Registry

**Table 12-3: Limited-Duration and Complete Prevalence for Cervical Cancer, Females, Alberta, 2008**

Duration	Prevalence
2-Year	261
5-Year	608
10-Year	1,155
20-Year	1,824
Complete	2,571

Data Source: Alberta Cancer Registry, Alberta Health and Wellness

**Figure 12-2: Age-Standardized Incidence Rates (ASIRs)\*\* and Mortality Rates (ASMRs)\*\* for Cervical Cancer, Females, Alberta, 1988-2008**



\* Three-year moving average.

† Standardized to 1991 Canadian population.

Data Source: Alberta Cancer Registry, Alberta Health and Wellness

In 2008, **828** potential years of life were lost due to cervical cancer, which constitutes 1.0% of PYLL for all cancers (**Figure 12-1**).

### Prevalence

The **prevalence** of a disease is defined as the number of people alive who had been previously diagnosed with that disease.

Limited-duration cervical cancer prevalence represents the number of people alive on a certain day who had previously been diagnosed with cervical cancer within a specified number of years (e.g. 2, 5, 10 or 20 years) while complete cervical cancer prevalence represents the proportion of people alive on a certain day who had previously been diagnosed with cervical cancer, regardless of how long ago the diagnosis was.<sup>10</sup>

In this section of the report, both limited-duration and complete cervical cancer prevalence are presented; the latter describing the number of people alive as of December 31, 2008 who had ever been diagnosed with cervical cancer.

Prevalence is a useful indicator of the impact of cancer on individuals, the healthcare system and the community as a whole. Although many cancer survivors lead healthy and productive lives, the experience can have a strong impact on the physical and emotional well-being of individuals and their families. The cancer experience can also result in the continued use of the healthcare system through rehabilitation or support services, as well as loss of work productivity that can affect the whole community.

As of December 31, 2008, approximately **2,570** Albertans were alive who had previously been diagnosed with cervical cancer (**Table 12-3**).

Approximately **260** Albertans were alive on the same date who had been diagnosed with cervical cancer in the previous two years, the period during which cases receive definitive treatments.

## Cervical Cancer Incidence and Mortality

### Introduction

**Incidence counts** are the number of new cancer cases diagnosed during a specific time period in a specific population. In this section of the report, incidence counts refer to the number of new cervical cancer diagnoses in Alberta in a calendar year. Incidence rates are the number of new cancer cases diagnosed per 100,000 population in a specific time period.

**Mortality counts** describe the number of deaths attributed to cancer during a specific period of time in a specific population. In this section of the report, mortality refers to the number of deaths due to cervical cancer in Alberta in a calendar year, regardless of date of diagnosis. Mortality rates are the number of deaths per 100,000 population in a specific time period.

In order to compare cancer incidence or cancer mortality over time or between populations, **age-standardized incidence rates (ASIRs)** or **age-standardized mortality rates (ASMRs)** are presented. These are weighted averages of **age-specific rates** using a standard population. These rates are useful because they are adjusted for differences in age distributions in a population over time, which permit comparisons of cancer incidence or mortality among populations that differ in size, structure and/or time period. ASIRs and ASMRs give the overall incidence and mortality rates that would have occurred if the population of Alberta had been the same as the standard population.

In this report the Canadian 1991 population is used as the standard population.

**Three-year moving averages** are used to smooth out year-to-year fluctuations so that the underlying trend may be more easily observed. They are calculated based on aggregating three years of data. Age-standardized incidence rates (ASIRs) and age-standardized mortality rates (ASMRs) are presented as three-year moving averages. This smoothing of trends is especially important when the number of cancer cases per year is relatively small, where year-to-year variability can be quite large.

Incidence and mortality can be affected by the implementation of public health prevention or screening strategies that either prevent disease or find cancer in its early **stages** when treatment is generally more successful, the development of cancer treatment programs that may impact chances of survival and research innovations.

The following figures show incidence and mortality trends in Alberta. Separate analyses for both incidence and mortality are shown in subsequent sections. The statistical significance of the trends was determined by using Joinpoint<sup>2</sup> and is described in the text accompanying each graph. Joinpoint models are based on yearly rates; hence there may be slight differences in the rates presented in the text (from Joinpoint model) and the graphs (where ASIRs and ASMRs are shown as three-year moving averages).

Cervical cancer ASIRs have not changed significantly since 1988 (**Figure 12-2**).

In 2008, the ASIR for female cervical cancer was 7.9 per 100,000 female population.



Cervical cancer mortality rates are lower than incidence rates (**Figure 12-2**). Although cervical cancer ASIRs have not significantly changed, female cervical cancer ASMRs decreased significantly since 1988. Between 1988 and 2008, cervical cancer ASMRs decreased by an average annual reduction of 2.4%.

In 2008, the ASMR for female cervical cancer was 1.5 per 100,000 female population.

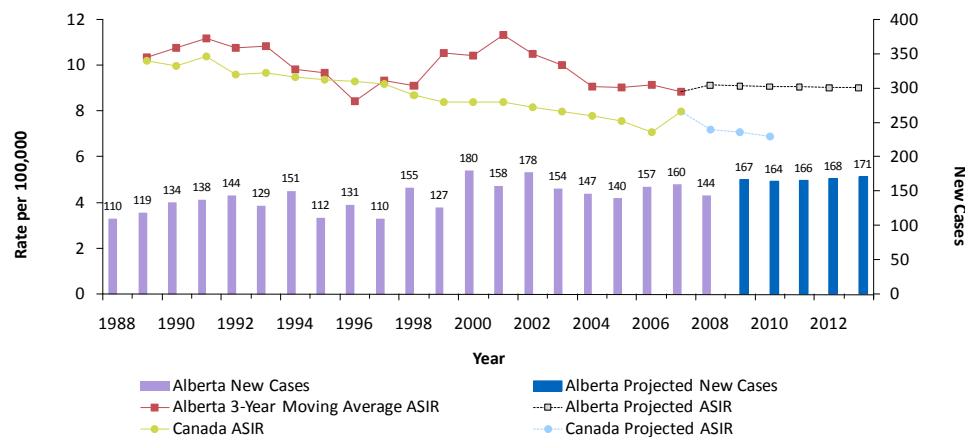
### Cervical Cancer Incidence

The following two figures (**Figures 12-3 to 12-4**) provide information on cervical cancer incidence in Alberta. The number of new cancer cases in Alberta is affected not only by changes in the incidence rates, but also by the changes in the age structure and growth of the population. In order to compare trends over time, age-standardized incidence rates (ASIRs) are also provided.

Years 2008-2013 in **Figures 12-3** are shown as **projections**, which are estimates of new cancer cases and cancer rates that may occur in the future. The projected cancer numbers were calculated by applying the estimated five-year age-specific cancer incidence rates to the projected age-specific population figures (observed up to 2008 and estimated for 2009-2013) provided by Alberta Health and Wellness<sup>3</sup>. Caution should be exercised when comparing Canada<sup>4</sup> and Alberta rates.

The estimated cancer incidence rates were calculated by extrapolating the recent trends in observed five-year age-specific rates, which were modeled using log-linear regression<sup>5</sup>. For those age groups where there were few cancers for most of the years, the average rates for the most recent five years were used.

**Figure 12-3: Actual and Projected Number of New Cases and Age-Standardized Incidence Rates (ASIRs)<sup>††</sup> for Cervical Cancer, Females, Alberta, 1988-2013**

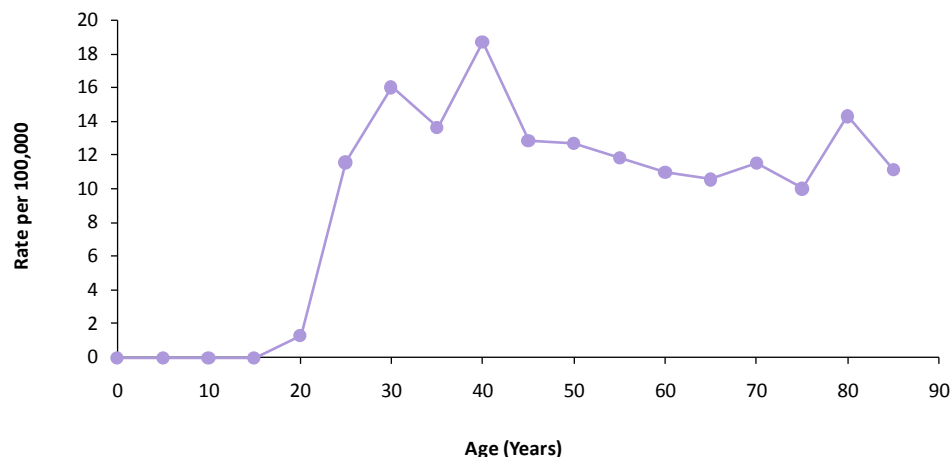


\* Three-year moving average.

† Standardized to 1991 Canadian population.

Data Source: Alberta Cancer Registry, Alberta Health and Wellness, Canadian Cancer Society

**Figure 12-4: Age-Specific Incidence Rates for Cervical Cancer, Females, Alberta, 2004-2008**



Data Source: Alberta Cancer Registry, Alberta Health and Wellness

In 2008, 144 cervical cancer cases were diagnosed in Alberta (Figure 12-3). ASIRs for cervical cancer were generally higher in Alberta than in Canada.

If current trends continue, approximately 170 cases of cervical cancer will be diagnosed in Alberta in 2013.

Cervical cancer affects females at a younger age than many other cancers. Cervical cancer incidence begins rising at the age of 20, peaking at 40, then slowly declines (Figure 12-4).

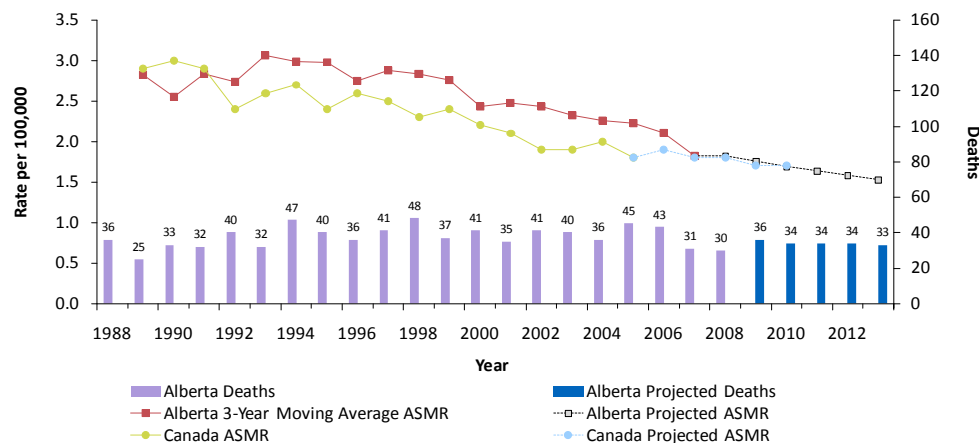
### Cervical Cancer Mortality

The following two figures (Figures 12-5 to 12-6) provide information on cervical cancer mortality in Alberta. The number of deaths in Alberta is affected not only by changes in the mortality rates, but also by the changes in the age structure and growth of the population. In order to compare trends over time, age-standardized mortality rates (ASMRs) are also provided.

Years 2009-2013 in Figures 12-5 are shown as *projections*, which are estimates of the number of cancer deaths and cancer mortality rates that may occur in the future. The projected numbers of cancer deaths were calculated by applying the estimated five-year age-specific cancer mortality rates to the projected age specific population figures (observed up to 2008 and estimated for 2009-2013) provided by Alberta Health and Wellness<sup>3</sup>. Caution should be exercised when comparing Canada<sup>4</sup> and Alberta rates.

The estimated cancer mortality rates were calculated by extrapolating the recent trends in observed five-year age-specific rates, which were modeled using log-linear regression<sup>5</sup>.

**Figure 12-5: Actual and Projected Number of Deaths and Age-Standardized Mortality Rates (ASMRs) \*\* for Cervical Cancer, Females, Alberta, 1988-2013**



\* Three-year moving average.

\*\* Standardized to 1991 Canadian population.

Data Source: Alberta Cancer Registry, Alberta Health and Wellness, Canadian Cancer Society

For those age groups where there were few cancers deaths for most of the years, the average rates for the most recent five years were used.

In 2008, 30 females died from cervical cancer in Alberta (*Figure 12-5*). ASMRs in Alberta were generally higher than in Canada.

If current trends continue, approximately 30 females are expected to die from cervical cancer in Alberta in 2013.

Cervical cancer mortality rates increase gradually after the age of 20, peaking in the oldest age groups (*Figure 12-6*).

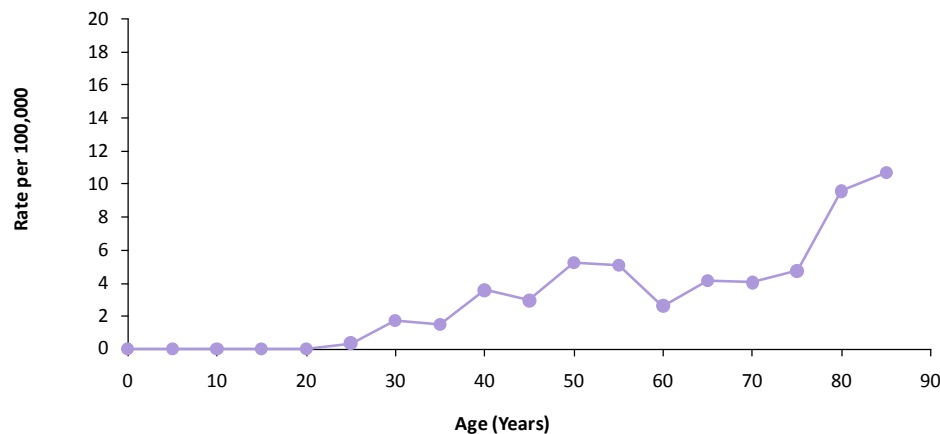
### Cervical Cancer Survival

Cancer survival ratios indicate the proportion of people who will be alive at a given time after they have been diagnosed with cancer. Survival is an important outcome measure and is used for evaluating the effectiveness of cancer control programs.

Survival depends on several factors including the cancer type (most importantly site, stage and morphology at diagnosis), sex, age at diagnosis, health status and available treatments for that cancer. While *relative survival ratios* (RSRs) give a general expectation of survival over the whole province, these ratios may not apply to individual cases. Individual survival outcomes depend on the stage at diagnosis, treatment and other individual circumstances.

Relative survival ratios are estimated by comparing the survival of cancer patients with that expected in the general population of Albertans of the same age, sex and in the same calendar year.

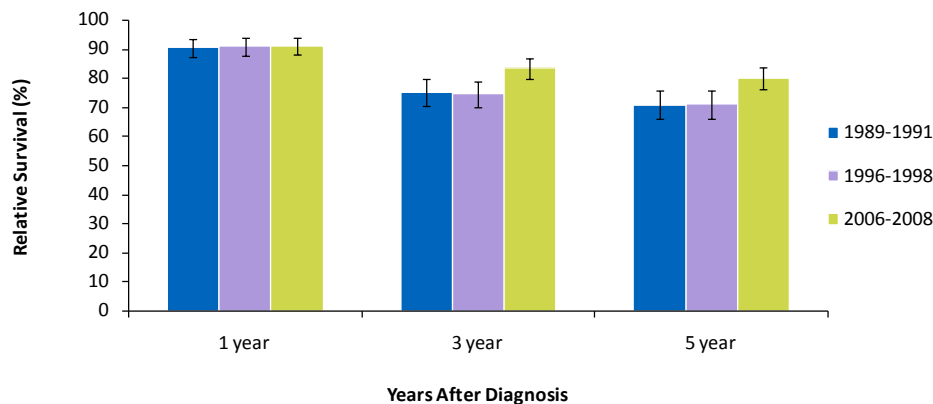
**Figure 12-6: Age-Specific Mortality Rates for Cervical Cancer, Females, Alberta, 2004-2008**



Data Source: Alberta Cancer Registry, Alberta Health and Wellness

Da

**Figure 12-7: One, Three and Five-Year Relative Survival Ratios for Cervical Cancer, Females, Alberta, 1989-1991\*, 1996-1998\* and 2006-2008†**



\* Ratios calculated by cohort method, where complete follow-up data are available.  
 † Ratios calculated by period method, where complete follow-up data are not available.

Data Source: Alberta Cancer Registry, Statistics Canada

Da

RSRs are estimated by the *cohort method* when complete follow-up data (e.g., at least five years of follow-up to estimate five-year rate) after diagnosis are available. For recently diagnosed cases, whose complete follow-up data are not available, the up-to-date estimates are computed using the *period method*. However, comparison between cohort and period RSRs should be interpreted with caution because of the two different methods used to derive the respective ratios.

Relative survival ratio is usually expressed as a percentage (%) and the closer the value is to 100%, the more similar the survival pattern is to the general population.

The five-year relative survival ratio for females diagnosed with cervical cancer in the period 2006-2008 is an estimated 80% indicating that out of all females diagnosed with this cancer between 2006 and 2008, around 80% are as likely to be alive five years after diagnosis as females from the general population.

The five-year relative survival ratio for females diagnosed with breast cancer in Alberta has improved in 2006-2008 compared to those diagnosed in 1989-1991 cohort years (*Figure 12-7*).

## Further Information

### Data Sources and Quality

Most of the data presented within this report are derived from the Alberta Cancer Registry (ACR). The ACR is responsible for recording and maintaining data on all new **primary cancers**, as well as all cancer deaths occurring within the province of Alberta, as mandated by the Regional Health Authorities (RHA) Act of Alberta.<sup>8</sup>

The quality of data collected by any registry is dependent on three factors: comparability, completeness and validity. Firstly, comparability is accomplished by applying standard practices regarding classification and coding of new cases and by using consistent definitions, such as the coding of multiple primaries. To achieve comparability, the ACR employs the International Classification for Oncology (ICD-O-2 for 1988-2000 data and ICD-O-3 for 2001 onwards) to classify all cancers by site and morphology. Cancer deaths are coded using the International Statistical Classification of Diseases and Related Health Problems (ICD-9 for 1988-2000 data and ICD-10 for 2001 onwards).

Secondly, completeness refers to the extent to which all the newly diagnosed cancers among Albertan residents are accurately captured by the ACR. The ACR is notified of new cancers by doctors and laboratories throughout the province, who are mandated to report such information. Cancer-related deaths are recorded and validated by the ACR using registry and Alberta Vital Statistics information. Over the years, the ACR has achieved a completeness of over 95%.

Lastly, validity depends on the documentation available and the level of expertise in the abstracting, coding and recording of data within a registry. The ACR has numerous data edits to ensure all information is input as accurately as possible. For example, date of diagnosis of cancer must be after the date of birth. There are additional data quality reviews performed on ACR data by the Canadian Cancer Registry and the North American Association of Central Cancer Registries (NAACCR).

Confidentiality and security of personal information are protected by the RHA Act and the Health Information Act (HIA). The Alberta Cancer Registry maintains the trust of the public, the government, the data provider, and the general public by requiring rigorous confidentiality and security practices, in accordance with the RHA Act and HIA, to access the Registry database. Formal policies on information disclosure are available on request from the Alberta Cancer Registry.

By recording information on cancer cases and cancer-related deaths over the past few decades, the Alberta Cancer Registry has been able to compare cancer statistics in Alberta with other provinces and countries. The Registry also provides information to health care stakeholders throughout the province so that they can plan effective prevention, treatment and research programs.

For many years, the Alberta Cancer Registry has been certified by NAACCR and has achieved a Gold Standard for completeness of the data, timely reporting and other measures that judge data quality.

## Glossary of Terms

### Age-specific rates:

The number of new cancer cases or cancer deaths per 100,000 people per year within a given age group.

### Age-standardized (incidence/mortality) rates:

A weighted average of age-specific rates using a standard population distribution. They reflect the overall rates that would be expected if the population of interest had an age structure identical to the standard population used to compare cancer rates among populations or identify trends over time.

### Benign:

A tumour that is not malignant (i.e. does not spread).

### Carcinoma:

A tumour that begins in the skin or in tissues that line or cover body organs.

### Confidence intervals:

An indication of the reliability of an estimate. A wide confidence interval indicates less precision and occurs when a population size is small.

### Count:

Count refers to the number of cases (primaries) or deaths in a given time period. One patient may have multiple primary sites.

### Incidence count:

The frequency of new cancer cases during a period of time; often the number of new invasive cases diagnosed in a year.

### Invasive cancer:

Cancer with the ability to spread beyond its point of origin.

### Life table:

A life table estimates, for people at a certain age, what the probability is that they die before their next birthday. From this starting point, a number of statistics can be derived and thus also included in the table: a) the probability of surviving any particular year of age; b) remaining life expectancy for people at different ages; and c) the proportion of the original birth cohort still alive. They are usually constructed separately for males and females because of their substantially different mortality rates.

### Lymphatic system:

A system of vessels that carry lymph between lymph nodes located throughout the body.

### Malignant:

Refers to a tumour that invades and destroys surrounding tissues, may spread elsewhere in the body, and is likely to recur after removal; a cancerous tumour.

### Median Age:

The age at which half of the population is older and half is younger.<sup>9</sup>

**Metastasis:**

Refers to the spread of the original tumour to other parts of the body.

**Mortality count:**

The number of deaths due to cancer during a period of time.

**Potential years of life lost (PYLL):**

PYLL is the total number of years of life lost and is obtained by multiplying, for each age group, the number of deaths by the life expectancy of survivors. The indicator was calculated by obtaining the number of deaths and mean life expectancy for each age group.<sup>4</sup>

**Prevalence:**

The number of people alive at a specific point in time with cancer. Complete prevalence is the number of people alive today who have *ever* been diagnosed with cancer. Limited-duration prevalence represents the number of people alive on a certain day who had previously been diagnosed with lung cancer within a specified number of years (e.g. 2, 5, 10 or 20 years) In this document, we report both complete and limited-duration prevalence.

**Primary Site of Cancer:**

The tissue or organ in which the cancer originates.<sup>10</sup>

**Probability of developing/dying of cancer:**

The risk of an individual in a given age range developing/dying of cancer in a given time period, and is conditional on the person being cancer-free prior to the beginning of that age range.

**Prognosis:**

A prediction about the outcome or likelihood of recovering from a given cancer.

**Projection:**

An estimate of cancer incidence or mortality in the future, based on recent historical trends.

**Rate:**

The number of cancer cases or deaths occurring in a specified time period.

**Relative survival:**

The survival of cancer patients relative to that of the general population. It is the ratio of observed survival in a group of cancer patients relative to the expected survival of a similar group of people in the general public, matched by age and sex in Alberta.

**Stage of cancer:**

Refers to the degree of cancer progression and the size of tumor at the time of diagnosis. If the cancer has spread, the stage describes how far it has spread from the original site to other parts of the body.<sup>9</sup>

**Surveillance:**

Cancer surveillance includes the collection of data, and the review, analysis and dissemination of findings on incidence (new cases), prevalence, morbidity, survival and mortality. Surveillance also serves to collect information on the knowledge, attitudes and behaviours of the public with respect to practices that prevent cancer, facilitate screening, extend survival and improve quality of life.<sup>11</sup>

**Survival - Cohort method:**

The cohort method provides survival estimates of cases having complete follow-up for the number of years of survival of interest. For example, cases diagnosed in 2001, for which vital status data are available to the end of year 2008, the cohort method may be used to obtain an estimate of five-year survival. The cohort survival represents the actual survival experience of individuals.

**Survival - Period analysis:**

The period method provides up-to-date survival estimates of recently diagnosed cases considering the survival experience of those cases within the most recent calendar period that allows for the estimation of a given period of survival. For example, to estimate the five year survival for cases diagnosed in 2004-2008, this method considers zero to one

year survival experience for cases diagnosed in 2004-2008, one to two year survival experience for cases diagnosed in 2003-2005 who survived at least one year, and so on up to four to five year survival experience for cases diagnosed in 2000-2002 who survived at least four years.

**Three-year moving average:**

Three-year moving averages are used to smooth out year-to-year fluctuations in age-standardized rates so that the underlying trend may be more easily observed. They are calculated based on aggregating three years of data.

**Tumour:**

An abnormal mass of tissue that is not inflammatory, arises without obvious cause from cells of pre-existent tissue, and possesses no physiologic function.



## References

1. Okamoto N, Morio S, Inoue R, Akiyama K. The risk of a second primary cancer occurring in five-year survivors of an initial cancer. *Jpn. J Clin Oncol.* 1987;17(3):205-213.
2. Kim H-J, Fay M, Feuer E. Permutation tests for JoinPoint regression with applications to cancer rates. *Stat. Med.* 2000; 19:335-351.
3. 2008 Alberta Population Data [Excel Spreadsheet]. Edmonton (Alberta): Alberta Health and Wellness; 2009.
4. Canadian Cancer Society's Steering Committee: Canadian Cancer Statistics 2009. Toronto: Canadian Cancer Society, 2009.
5. Dyba T, Hakulinen T. Comparison of different approaches to incidence prediction based on simple interpolation techniques. *Stat. Med.* 2000; 19:1741-1752.
6. Regional Health Authorities Act: Cancer Registry Regulation, Alberta Regulation. 71/2009.
7. National Cancer Institute - Surveillance Epidemiology and End Results [Internet]. USA. National Institutes of Health; c2009.Cancer Statistics. Glossary of Statistical Terms; 2009 [cited 2009 Nov 5]; Available from: <http://seer.cancer.gov/cgi-bin/glossary/glossary.pl>
8. Annual Report on Cancer Statistics 2005. Edmonton (AB): Alberta Cancer Board (Canada), Alberta Cancer Registry; 2008 Apr. 6 p.
9. Public Health Agency of Canada [Internet]. Canada. Government of Canada; c2009-10-07.Cancer Surveillance On-Line. Glossary; 2004 [cited 2009 Oct 7]; Available from: [http://dsol-smed.phac-aspc.gc.ca/dsol-smed/cancer/glossa\\_e.html](http://dsol-smed.phac-aspc.gc.ca/dsol-smed/cancer/glossa_e.html)
10. National Cancer Institute - Surveillance Epidemiology and End Results [Internet]. USA. National Institutes of Health; c2010.Cancer Prevalence Statistics Overview; 2010 [cited 2010 Nov 23]; Available from: <http://surveillance.cancer.gov/prevalence/>

### Contact Information

If further information is required, please contact Cancer Surveillance, Alberta Health Services as follows:

<b>Mailing Address:</b>	<b>Alberta Health Services</b> Surveillance and Health Status Assessment Cancer Surveillance 1400 - 10123-99 Street Edmonton, AB, Canada T5J 3H1
<b>Phone:</b>	780-643-4496
<b>Fax:</b>	780-643-4380
<b>Email:</b>	<a href="mailto:ACB.surveillance@albertahealthservices.ca">ACB.surveillance@albertahealthservices.ca</a>