

Safeworks Monthly Report – September 2018: Supervised Consumption Services

Date: October 15, 2018

Background

Safeworks Supervised Consumption Services (SCS) launched on October 30th, 2017 in a temporary facility at the Sheldon M. Chumir Health Centre with full federal exemption to the Controlled Drugs and Substances Act from Health Canada. On January 15th, 2018, the temporary facility closed, and the permanent facility inside the Sheldon M. Chumir Health Centre opened for operations. On April 30th, 2018, Safeworks began offering services 24 hours, 7 days a week.

Service Uptake

From October 30, 2017 to September 30, 2018, Safeworks SCS had **36,420 client visits**. In September 2018, the site saw **757 unique individuals** in **5,065 visits**.

Uptake of services increased over time. The average number of visits per day has increased from 11 in the first week of operations (October 30 – November 5), to 163 visits per day averaged from (September 1 to September 30), 2018.

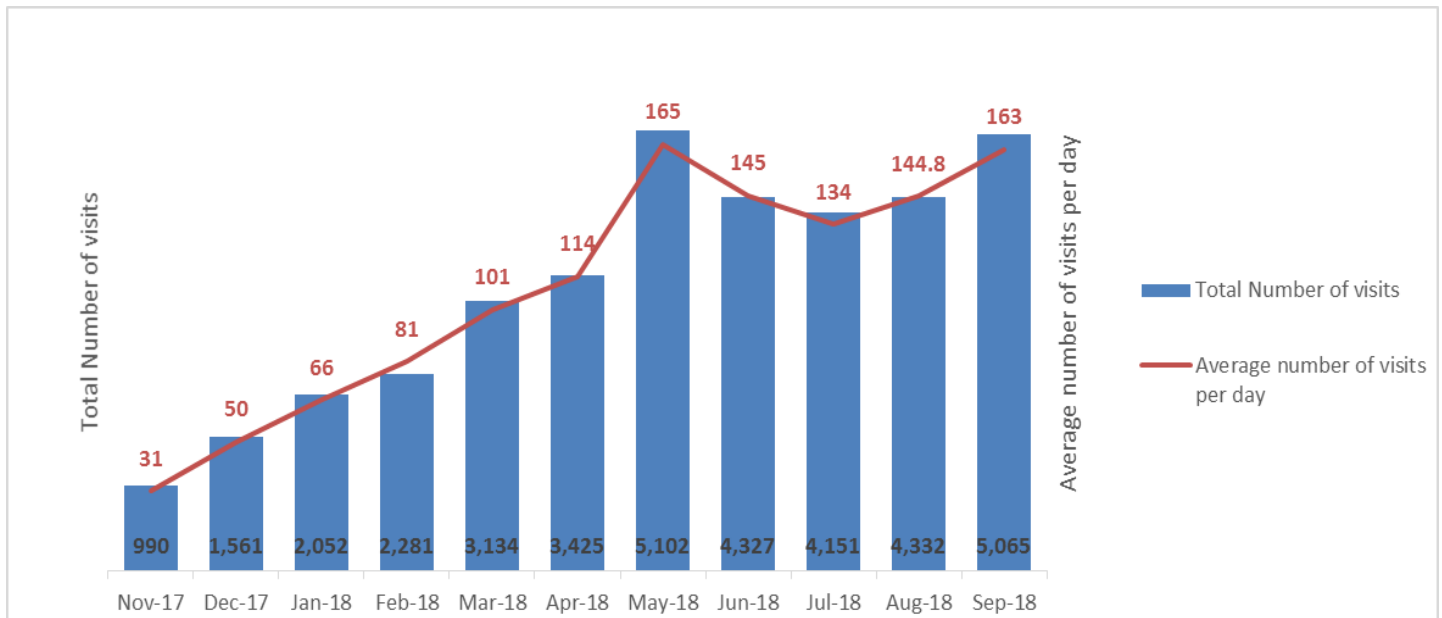
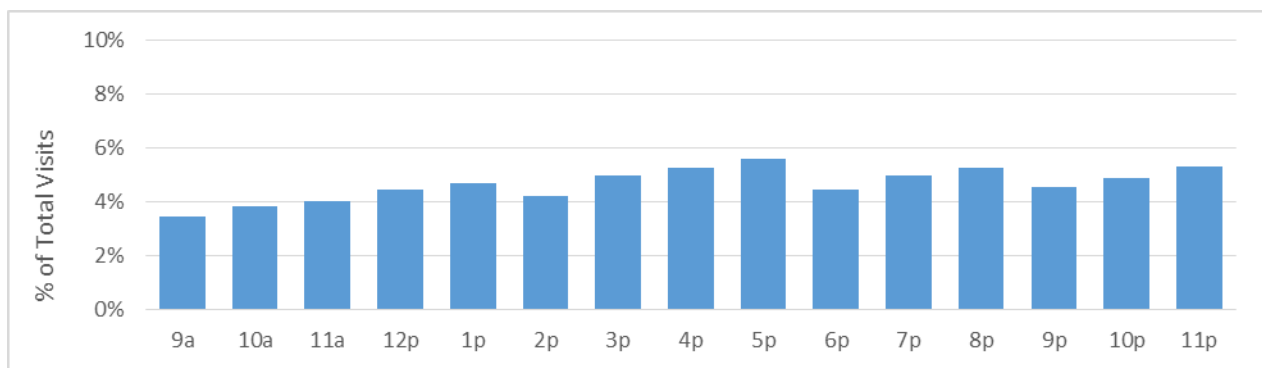


Fig 1: Safeworks SCS Total Number of Visits and Average Number of Visits per Day, by Month

The majority of clients use Safeworks SCS more than once, often within the same day. Not all clients consumed drugs on site; 21.9% of visits in September reflect harm reduction supply and/or naloxone kit distribution, monitoring post-consumption from use off site, wound care, or social support and referral services.

Safeworks SCS hours of operation are 24 hours per day, 365 days per year. Service uptake is consistent throughout the day.

Fig 2: Safeworks SCS Total Number of Visits by Time (hourly – based on time of admission) August 2018



Drug Use and Overdose Prevention and Response

In September 2018, drugs were consumed on site under the supervision of Registered Nurses **4,162 times**. With each client who uses drugs by injection, RNs are available to provide education on vein care, infection prevention, and injection technique. In September, there were four instances of ingestion (swallowing), and 141 instances of intranasal use (snorting).

The most frequently reported drugs used in September were meth/crystal (1,824 times) and fentanyl (1,454 times). Clients may use more than one drug with a single injection/consumption and as such, these counts are not reported as percentages.

Naloxone kits and overdose prevention education are offered to all clients accessing Safeworks SCS, and in September, **291 overdose response kits** were distributed to clients.

From October 30, 2017 – September 30, 2018, Safeworks staff responded to a **total of 589 overdoses**.

In August, Safeworks staff responded to **89 overdoses**, of which 78 required supplemental oxygen alone; 41 overdoses required naloxone and five also required an EMS response.

Table 1: Safeworks SCS Summary of Visits and Overdoses by Month

Month	Number of client visits	Number of times drugs consumed	Number of Overdoses	Overdoses per number of times drugs consumed
October 30 – November 30, 2017	990	827	26	3.14%
December, 2017	1,561	1,281	29	2.26%
January, 2018	2,052	1,687	35	2.07%
February, 2018	2,281	2,003	29	1.45%
March, 2018	3,134	2,683	67	2.50%
April, 2018	3,425	2,867	44	1.53%
May, 2018	5,102	4,131	71	1.72%
June, 2018	4,327	3,545	78	2.20%
July, 2018	4151	3,295	67	2.03%
August, 2018	4332	3,571	59	1.65%
September, 2018	5065	4,162	89	2.14%
Total	36420	30052	594	1.98%

Wrap-Around Care and Referrals

In order to provide streamlined access to specialized care, Safeworks SCS has partnerships with both AHS programs and external community partners. In September, Safeworks made 17 referrals, including 3 referrals to the Opioid Dependency Program (ODP).

Table 2: Safeworks SCS Summary of Referrals by Month

Month	Social Work Referrals	ODP Referrals	Other Referrals	Total Referrals
October 30 – November 30, 2017	12	7	14	33
December, 2017	33	12	10	45
January, 2018	11	12	10	33
February, 2018	14	9	12	35
March, 2018	14	6	9	29
April, 2018	2	10	11	23
May, 2018	10	12	12	34
June, 2018	0	5	6	11
July, 2018	1	3	7	11
August, 2018	0	2	6	8
September	1	3	13	17
Total	97	78	97	262

Program Evaluation

Safeworks is partnering with the Institute of Health Economics to conduct a comprehensive provincial program evaluation of SCS.