

Safeworks Monthly Report – March 2019: Supervised Consumption Services

April 11, 2019

Background

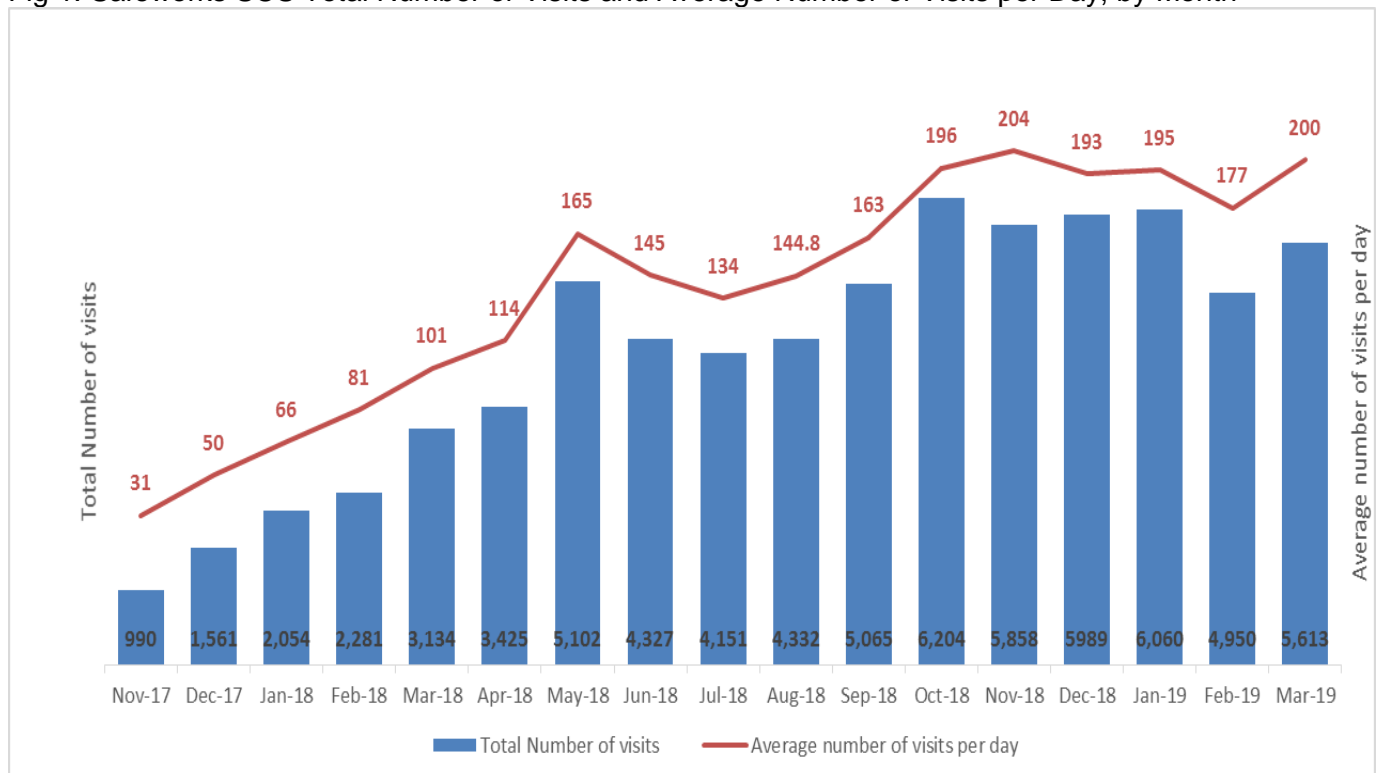
Safeworks Supervised Consumption Services (SCS) launched on October 30th, 2017 in a temporary facility at the Sheldon M. Chumir Health Centre with a federal exemption to the Controlled Drugs and Substances Act from Health Canada. On January 15th, 2018, the temporary facility closed, and the permanent facility inside the Sheldon M. Chumir Health Centre opened for operations. On April 30th, 2018, Safeworks began offering services 24 hours, 7 days a week.

Service Uptake

From October 30, 2017 to March 31, 2019, Safeworks SCS had **71,096 client visits**. In March 2019, the site saw **848 unique individuals** in **5,613 visits**.

Uptake of services increased over time. The average number of visits per day has increased from 11 in the first week of operations (October 30–November 5, 2017), to 200 visits per day averaged from March 1 to March 31, 2019.

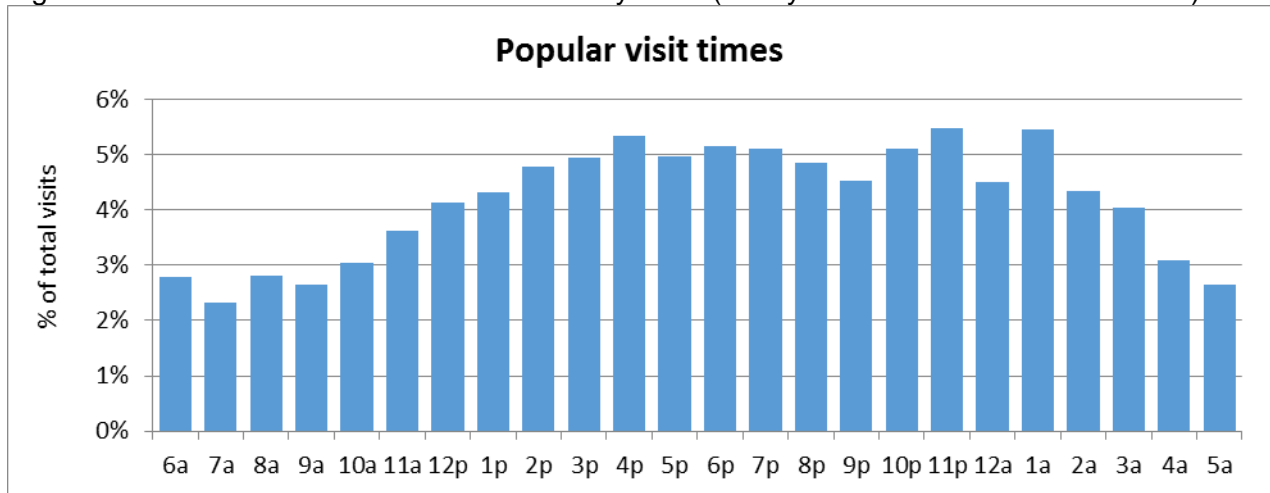
Fig 1: Safeworks SCS Total Number of Visits and Average Number of Visits per Day, by Month



The majority of clients use Safeworks SCS more than once, often within the same day. Not all clients consumed drugs on site: 17% of visits in March reflect harm reduction supply and/or naloxone kit distribution, monitoring post-consumption from use off-site, wound care, or social worker.

Safeworks SCS hours of operation are 24 hours per day, 365 days per year. Service uptake is consistent throughout the day.

Fig 2: Safeworks SCS Total Number of Visits by Time (hourly – based on time of admission)



Drug Use and Overdose Prevention and Response

In March 2019, drugs were consumed on site under the supervision of Registered Nurses (RNs) or Paramedics **4,409 times**. With each client who uses drugs by injection, RNs and Paramedics are available to provide education on vein care, infection prevention, and injection technique. In March, there were zero instances of ingestion (swallowing), and 102 instances of intranasal use (snorting).

The most frequently reported drugs used in March were meth/crystal (1,812 times) and fentanyl (1,589 times). Clients may use more than one drug with a single injection/consumption and as such, these counts are not reported as percentages.

Naloxone kits and overdose prevention education are offered to all clients accessing Safeworks SCS, and in March, 328 **overdose response kits**.

From October 30, 2017 to March 31, 2019, Safeworks staff responded to a **total of 954 overdoses**.

In March, Safeworks staff responded to **53 overdoses**: 52 required supplemental oxygen, 27 overdoses required naloxone and 6 also required an EMS response.

Table 1: Safeworks SCS Summary of Visits and Overdoses by Month

Month	Number of client visits	Number of times drugs consumed	Number of Overdoses	Overdoses per number of times drugs consumed
October 30 – November 30, 2017	990	827	26	3.14%
December, 2017	1,561	1,281	29	2.26%
January, 2018	2,054	1,687	35	2.07%
February, 2018	2,281	2,003	29	1.45%
March, 2018	3,134	2,683	67	2.50%
April, 2018	3,425	2,867	44	1.53%
May, 2018	5,102	4,131	71	1.72%
June, 2018	4,327	3,545	78	2.20%
July, 2018	4151	3,295	67	2.03%
August, 2018	4332	3,571	59	1.65%
September, 2018	5065	4,162	89	2.14%
October, 2018	6,204	4,664	63	1.35%
November, 2018	5,858	4,745	62	1.31%
December, 2018	5989	5,033	52	1.03%
January, 2019	6060	4,936	60	1.22%
February, 2019	4950	3,877	70	1.81%
March, 2019	5,613	4,409	53	1.20%
Total	71096	53307	954	1.66%

Wrap-Around Care and Referrals

To provide streamlined access to specialized care, Safeworks SCS has partnerships with AHS programs and external community partners. In March, Safeworks made 133 referrals, including eight referrals to the Opioid Dependency Program (ODP).

Table 2: Safeworks SCS Summary of Referrals by Month

Month	Social Work Referrals	ODP Referrals	Other Referrals *	Treatment/ Detox	Shelter/ Housing	Urgent Care	Total Referrals
October 30 – November 30, 2017	12	7	14	Data not broken down during this time period. These categories were grouped into “Other Referrals” from October 2017 to December 2018.			33
December, 2017	33	12	10				55
January, 2018	11	12	10				33

February, 2018	14	9	12				35
March, 2018	14	6	9				29
April, 2018	2	10	11				23
May, 2018	10	12	12				34
June, 2018	0	5	6				11
July, 2018	1	3	7				11
August, 2018	0	2	6				8
September, 2018	1	3	13				17
October, 2018	0	4	15				19
November, 2018	4	8	26				38
December, 2018	10	4	57				71
January, 2019	15	9	85	19	22	13	163
February, 2019	5	8	64	14	52	7	150
March, 2019	3	5	56	16	49	4	133
Total	127	119	413				863

* "Other" includes referrals made to a variety of programs, including iOAT, The SORCE, and Community Paramedics.

Program Evaluation

Safeworks is partnering with the Institute of Health Economics to conduct a provincial program evaluation of SCS.

Leader Rounding is being done regularly in the site. Comments from clients (in February 2019) include:

"While I am in the site I won't be harmed. Staff pretty good, will stand up for me. Protective Services help in making me feel safe. I had a problem with a guy who assaulted me, following me, waited outside. Protective Services made sure I was safe."

"Safety. Feeling welcomed with open arms. Confidentiality. Comfortable. The warmth of staff. They are easy going, non-judgemental, not biased, open-minded, good listeners, friendly. They really listen. I can be real with staff."

"Grateful there is a place like this and have access to it."

"Being safe and alive. Here you have a chance for a revival. Don't have much of a chance out there."

Clients have also commented on the quality of staff and state they are very pleased to see peer support working in the SCSS.