

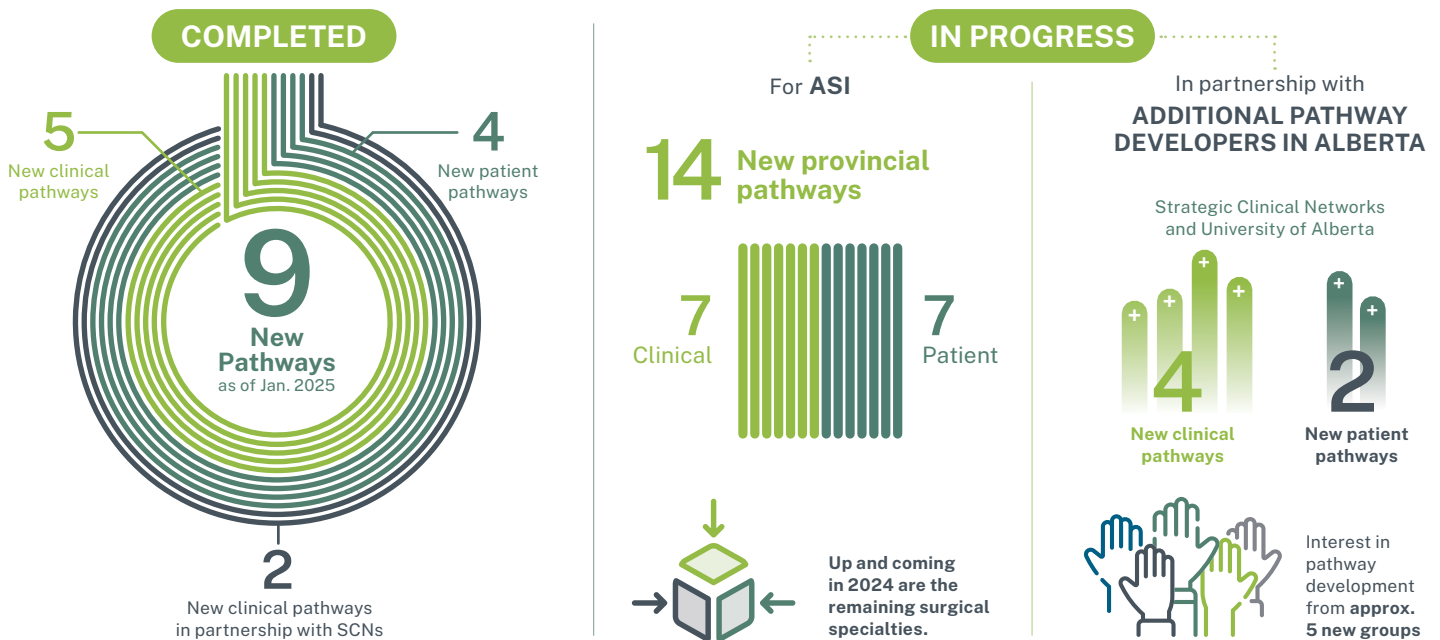
Provincial Pathways Unit

Transforming Healthcare, One Pathway at a Time



The Provincial Pathways Unit (PPU) is part of Primary Care Alberta and is committed to delivering seamless, integrated care by standardizing, coordinating, and enabling the co-design and use of clinical and patient pathways. At the core of our work is a steadfast dedication to ensuring these pathways authentically represent and incorporate the voices of those they are designed to serve—patients, families, and primary care providers.

WORK HAPPENING WITHIN THE PPU



“As a family doctor, it is hard to handle our urgent cases that are just waiting to get past the bottleneck. These pathways are a simple-to-use, wide-reaching solution that I have shared with my colleagues, residents, and medical students... we all think they are invaluable! It is also helpful to have a resource to point patients to, if they have more questions.”

“...Grateful for the collaboration with the PPU, for their dedication in the timely creation of pathways, and for their exceptional skill in listening and in guiding the facilitation of our input.”



View the latest **News on The Hub** and for the most up to date information.

To learn more, visit albertapathways.ca

MAY 2025

Provincial Pathways Unit

Transforming Healthcare, One Pathway at a Time



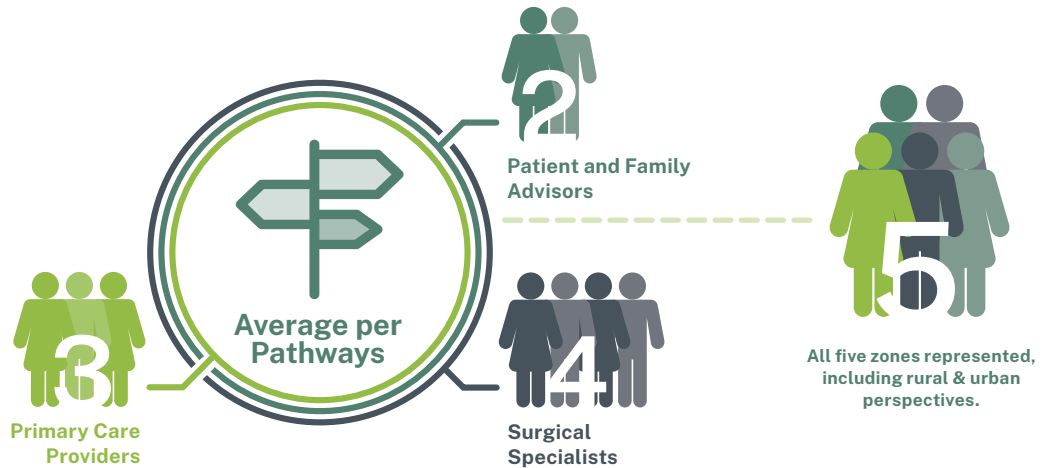
CLINICAL & PATIENT PATHWAY DEVELOPMENT PARTICIPANTS



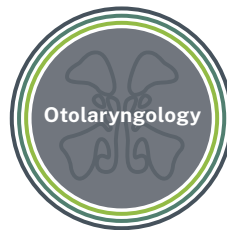
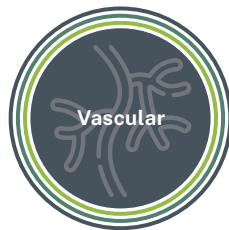
Learn more about **Pathways on The Hub** and for the most up to date information.

As a demonstration of co-design, each ASI pathway developed has involved:

- **2-4** Primary Care Providers
- **2-6** Surgical Specialists
- **1-2** Patient and Family Advisors



SURGICAL SPECIALTIES ENGAGED



ENHANCING EFFICIENCY IN PATHWAY CO-DESIGN

The PPU has made significant strides in streamlining the pathway co-design and development process. By refining their approach, they have improved efficiency, consistency, and collaboration, ensuring that pathways are developed effectively while maximizing the capacity of both PPU team members and co-design partners. The unit's ability to facilitate and guide co-design teams has been widely recognized, with stakeholders noting the seamless process and strong facilitation skills that enable pathways to be completed within a three-month timeframe or less. This ongoing commitment to efficiency allows the PPU to respond quickly to emerging needs while maintaining the high standards and collaborative approach that define our work.

To learn more, visit albertapathways.ca



MAY 2025

*THIS INCLUDES ALL INVOLVED IN CO-DESIGN AND/OR PROVINCIAL WORKING GROUP SESSIONS.

*SURGICAL SPECIALTIES ABOVE IS A SELECTION OF SPECIALTIES ENGAGED.

*ALL ZONES REPRESENTED

Alberta's Pathway Hub

Transforming Healthcare, One Pathway at a Time



The Hub is the provincial location for trusted, evidence-informed clinical, patient, and referral pathways. Created right here in Alberta, each pathway is developed in collaboration with patients, primary care teams, and specialty providers from across the province. Designed and supported by the Provincial Pathways Unit, the hub guides healthcare providers in delivering seamless, community-centered care.



Visit the **The Hub** and for the most up to date information.




1,700 average monthly unique users

AVERAGE TIME
to develop a brand new
clinical pathway



AVERAGE TIME
to develop a
new patient pathway



AVERAGE TIME
to develop a brand
new referral pathway



“ I use primary care pathways during patient visits so that I can be sure I am asking the right questions, ordering the right tests, and managing their condition using evidence-based strategies. They are easy to use, and I appreciate that primary care providers are involved in their development. ”

Primary Care Physician

“ Patient pathways are a significant improvement. They provide information I would have been very grateful to have during my trips through the healthcare system. Information on what is happening at different points, what to expect, where to go to get more information, and links to resources to make the patient's journey an easier pathway. Have a look at them and thank you for the opportunity. ”

Patient

To learn more, visit albertapathways.ca

