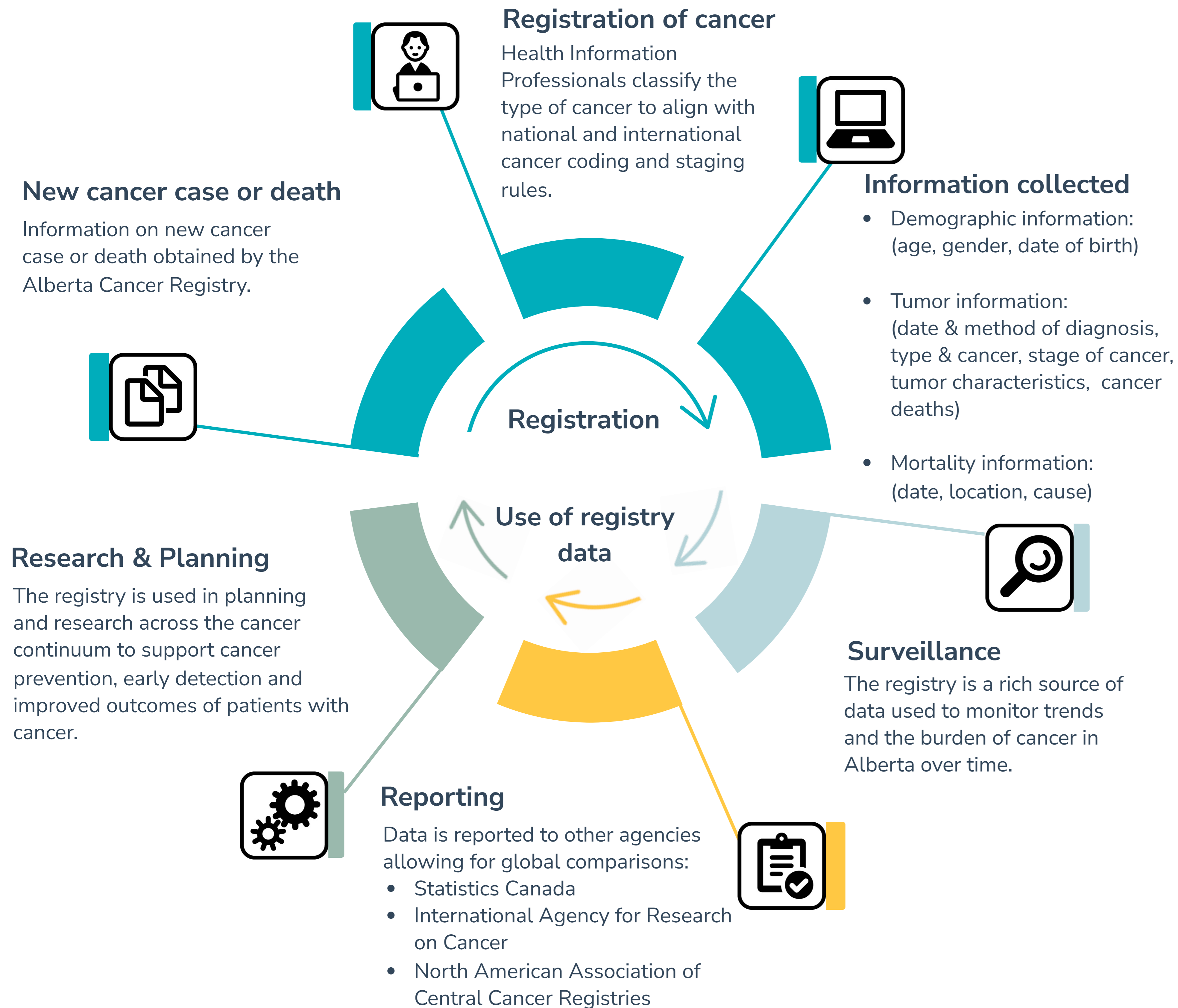


Alberta Cancer Registry

The Alberta Cancer Registry is a database of all newly diagnosed cancers and deaths in the Alberta population. The registry is designed for the collection, management, review and analysis of cancer data.



The Alberta Cancer Registry has maintained **Gold Certification status since 2002**. This is based on complete, accurate and timely data reporting.



The Alberta Cancer Registry is a secure database with rigorous security and privacy practices in place.



Alberta Cancer Registry data is accurate and reliable. Valuable insights concerning cancer trends is important for **future planning** of cancer care in Alberta. Data from the registry informs decision making to explore impactful and innovate ways to help people in Alberta facing cancer now, and in the years ahead.

The Alberta Cancer Registry along with the new Data Environment for Cancer Inquiries and Decisions (DECIDE) will provide access to all cancer patient data from multiple sources in one place. This includes:

- Population-based cancer registry for all cancers diagnosed in Alberta.
- Standard Diagnosis Information (diagnosis date, multiple primaries).
- Tumor and stage information at time of diagnosis.
- Mortality data (follow-up from Vital Status).